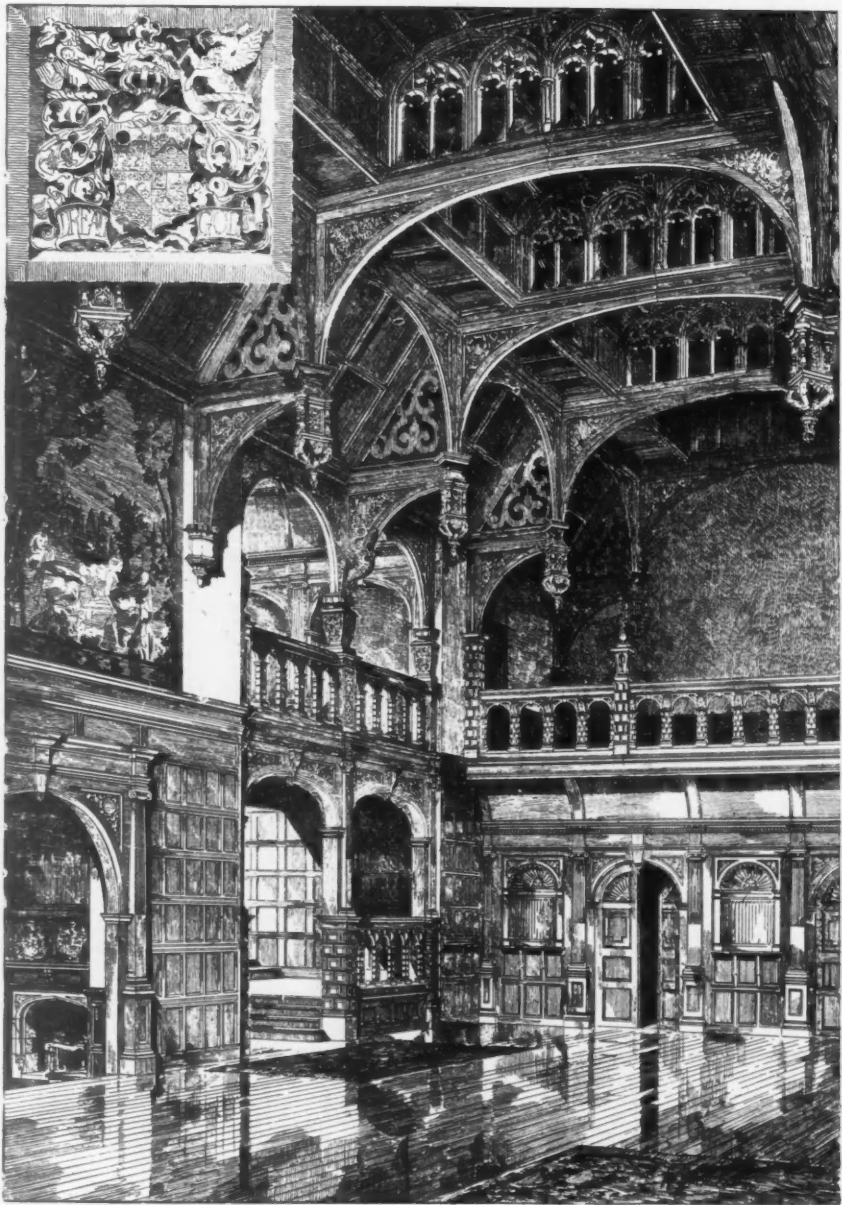


II. SUPPLEMENT TO
ACADEMY ARCHITECTURE, 1891.



1878. *Design for Altar Piece*, THOMAS COWLISHAW, Architect.



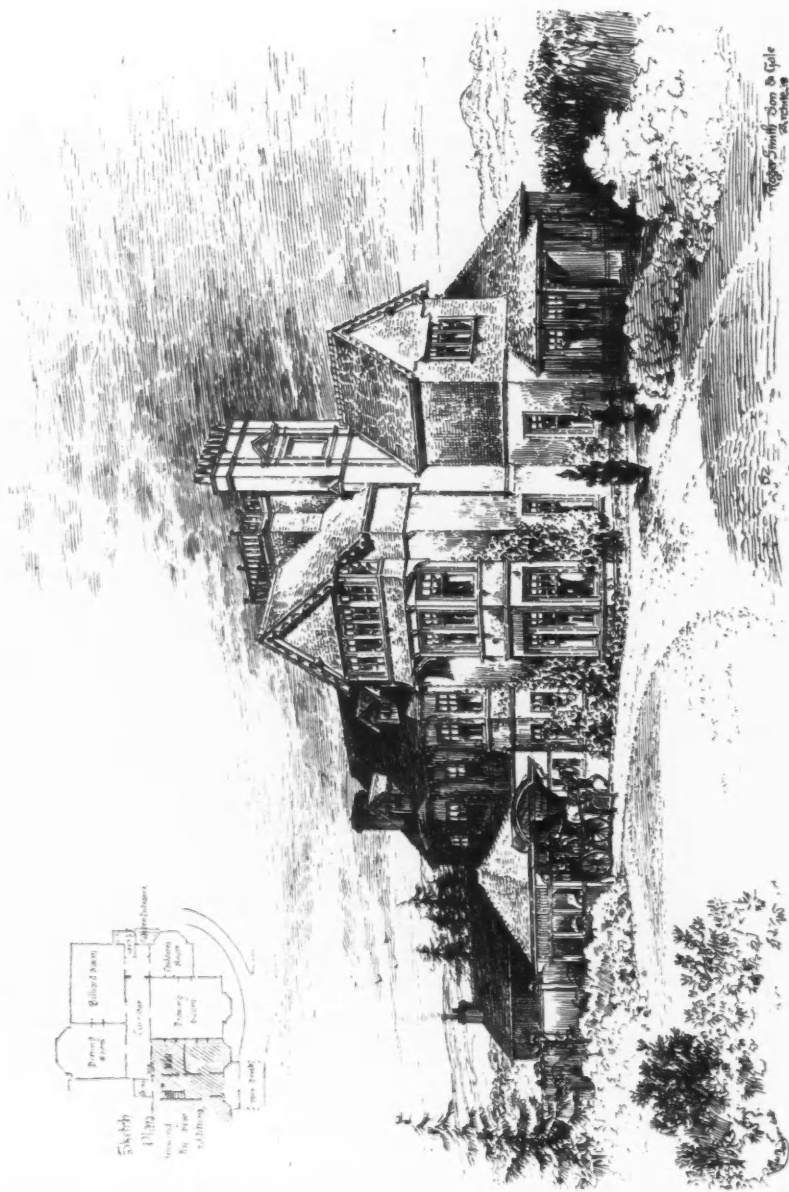
1790. *Interior of the Great Hall, Rhinefield, Hampshire, ROMAINE-WALKER AND TANNER, Architects.*

Heating—John Grundy, 30 Duncan Terrace, City Road, London, N.

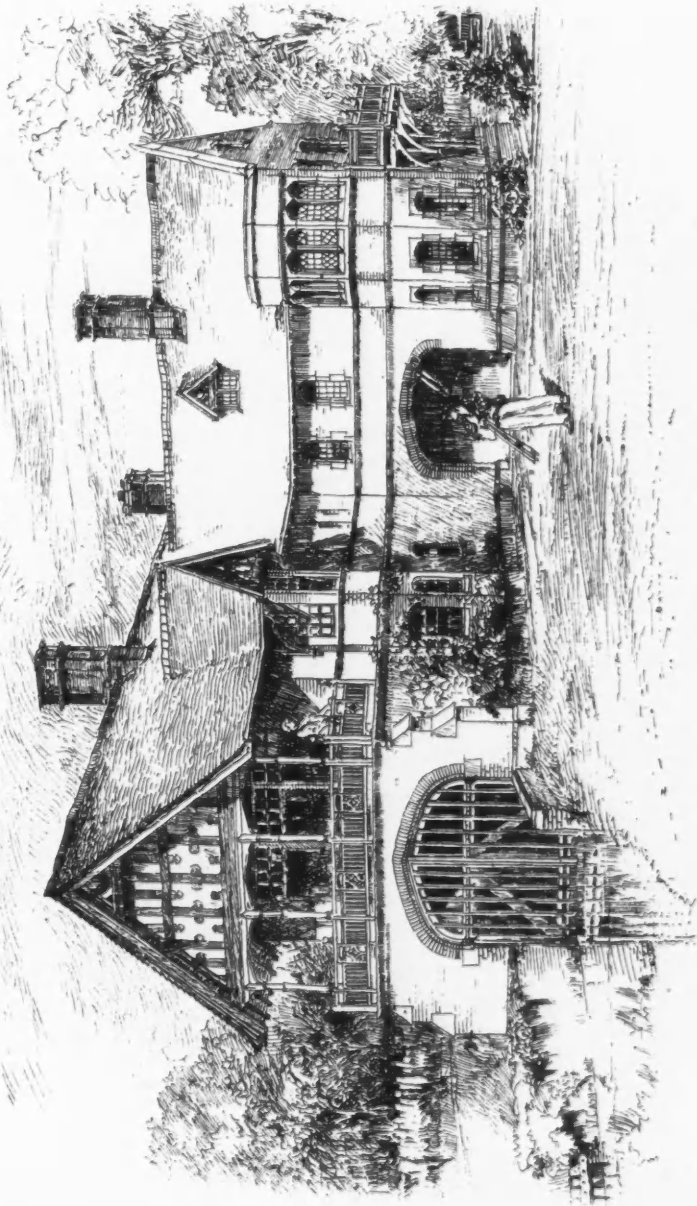


1938. *Entrance Hall, The Lodge, near Newmarket, HESKETH AND STOKES, Architects.*

Electric Lighting—Rasleigh, Phipps, & Dawson, 53 Berners Street, London, W. **Heating**—John Grundy, 30 Duncan Terrace, City Road, London, N.



1856. Additions to Uplands, Heathfield, Sussex, for G. W. Osborn, Esq., ROGER SMITH, SON AND GALE, Architects.



1924. *Boathouse, Maidenhead Court, R. SELDEN WORNUM, F.R.I.B.A., Architect.*

General Contractors—J. Kinnimont & Sons, 26 Chilworth Street, Gloucester Terrace, London, W.



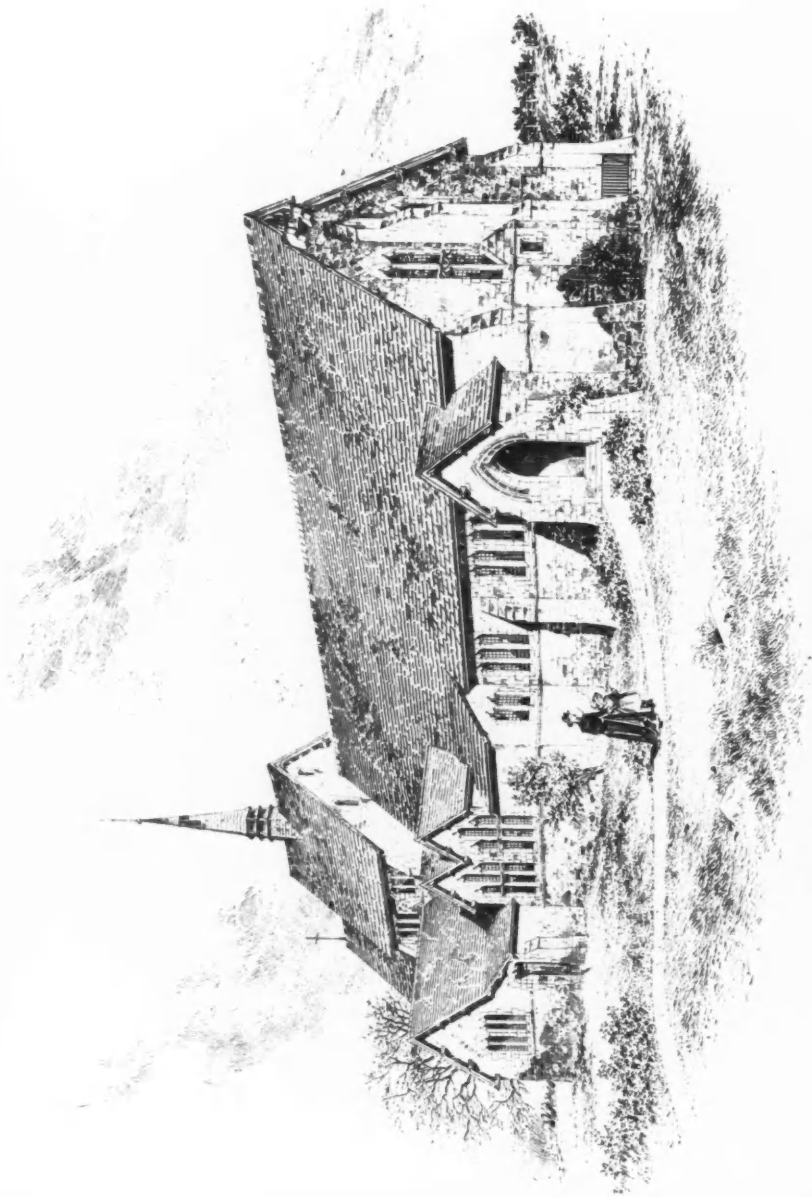
1821. *St. Mary's, Stoke Newington, Tower and Spire*, J. OLDRID SCOTT, F.R.I.B.A., Architect.

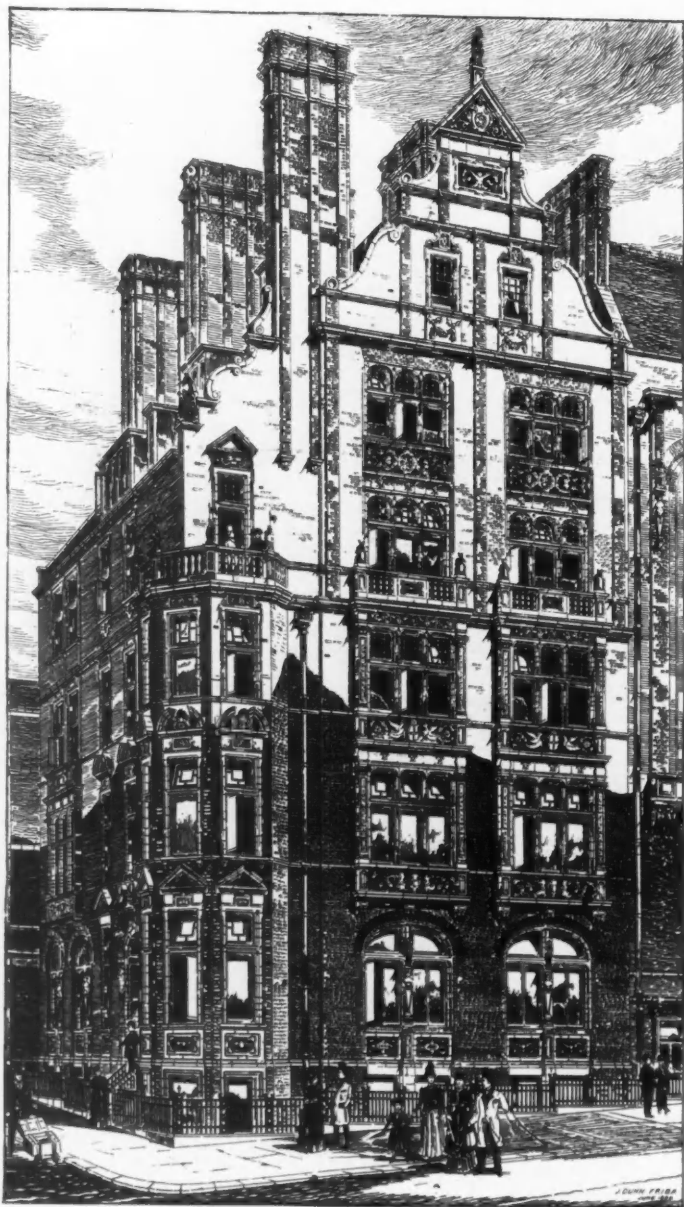
Engraving—John Grundy, 30 Duncan Terrace, City Road, London, N.



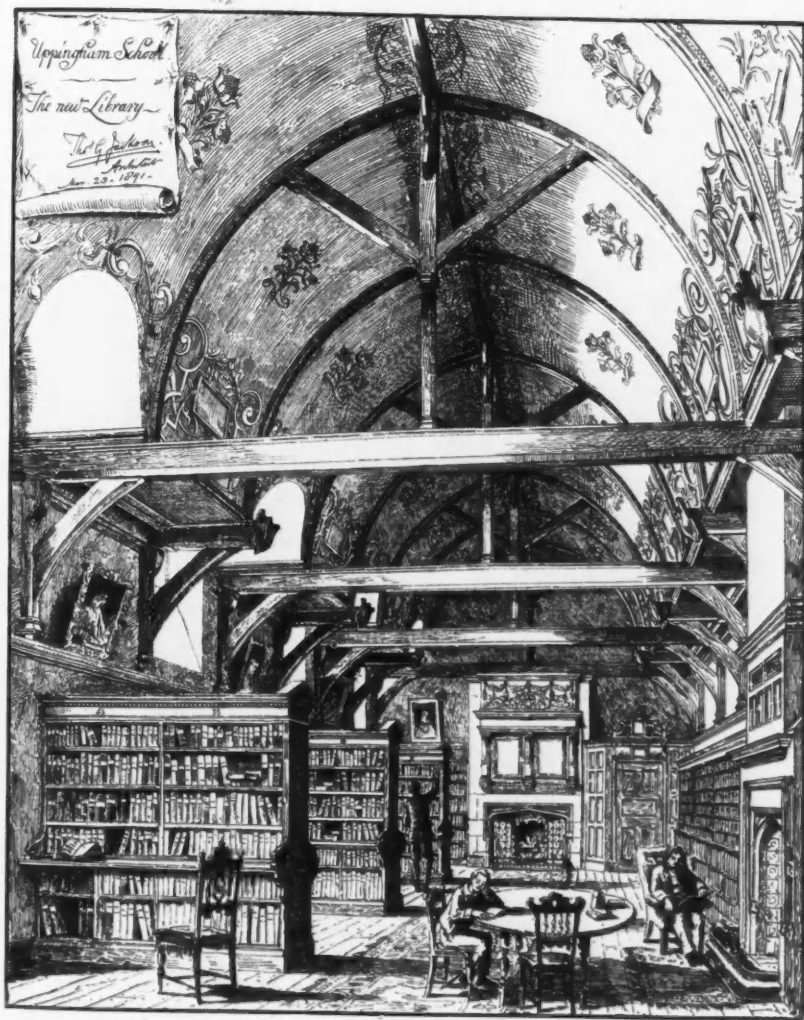
1755. *Tower of the University Buildings at Glasgow, J. OLDRID SCOTT, F.R.I.B.A., Architect.*

General Contractor—John Thompson, Peterborough.

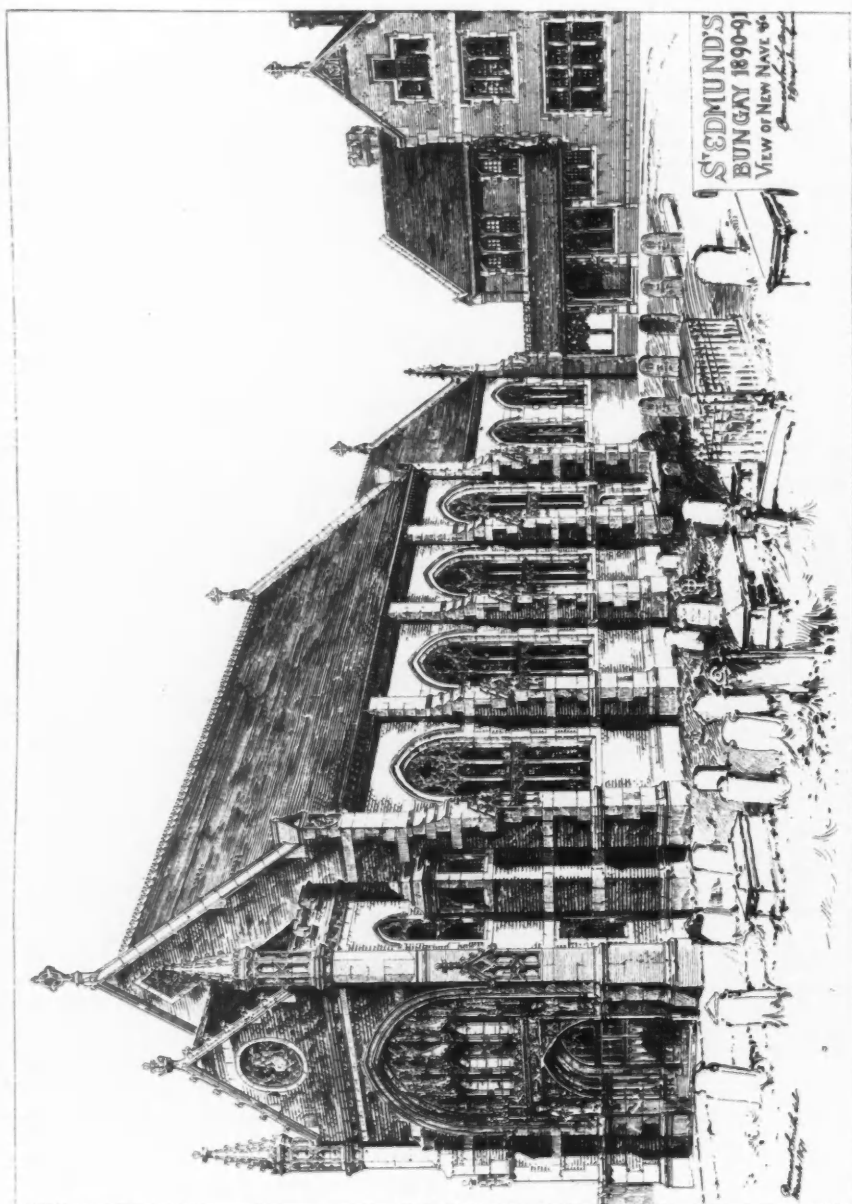
1905. *Design for New Church, Heap Bridge, Preston and Vaughan, Architects.*



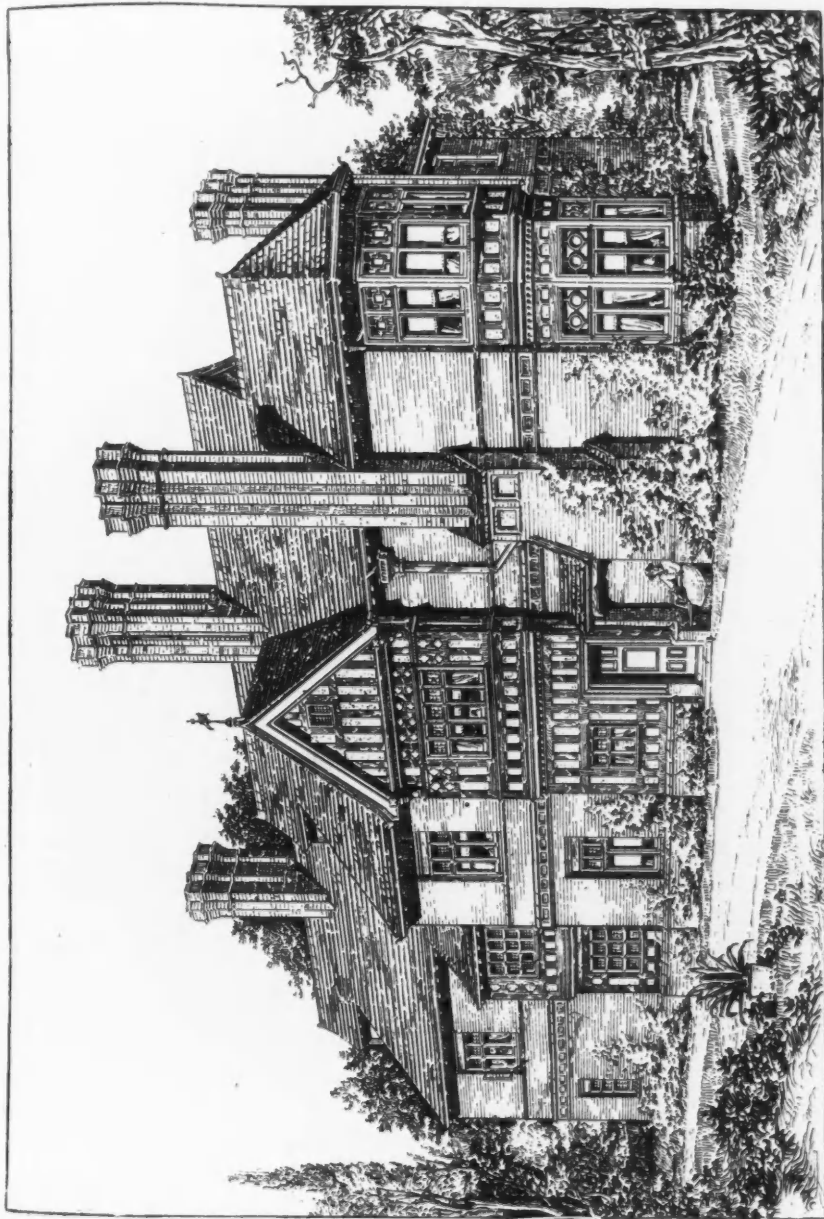
1788. *New Library, Howard Street, Strand, W.C., for Messrs. W. H. Smith & Son, JOHN DUNN, F.R.I.B.A., Architect.*



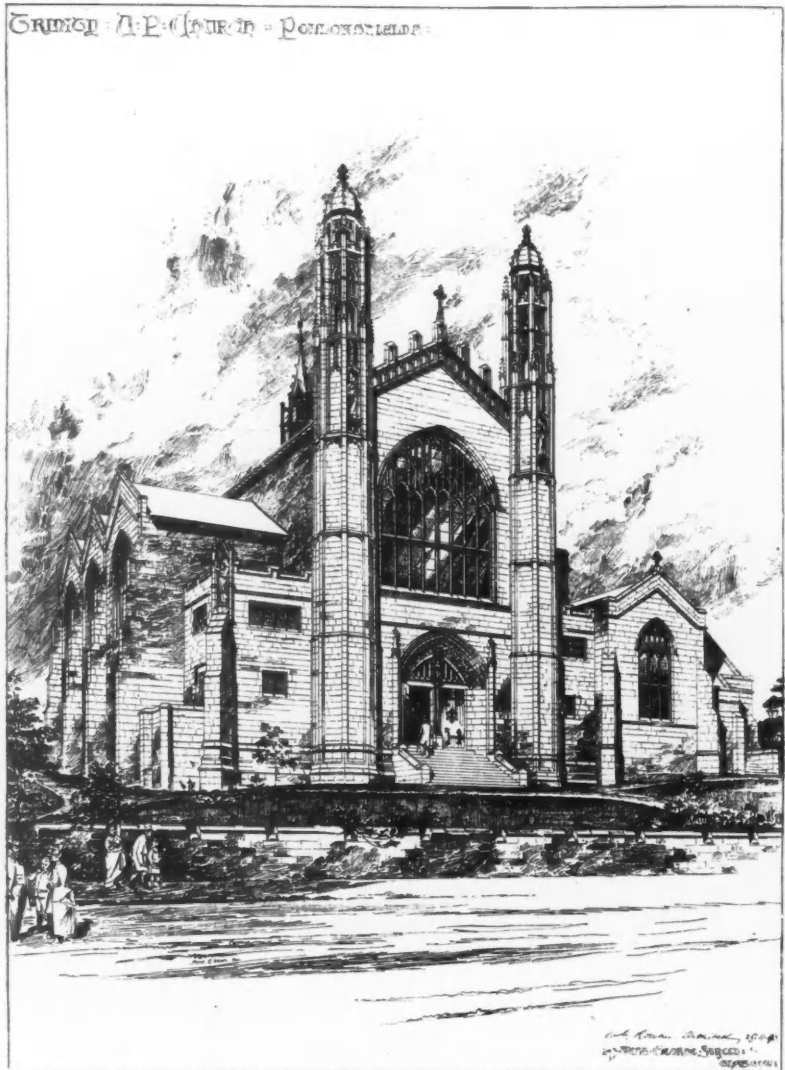
1876. *The New Library, Uppingham School*, THOMAS G. JACKSON, A.R.A., Architect.



1860. *View of New Nave, &c., St. Edmund's, Brongay, BERNARD SMITH, Architect.*



1892. Residence, Kennel Wood, Kent, WILLIAM J. BUXTON, A. R. I. B. A., Architect.

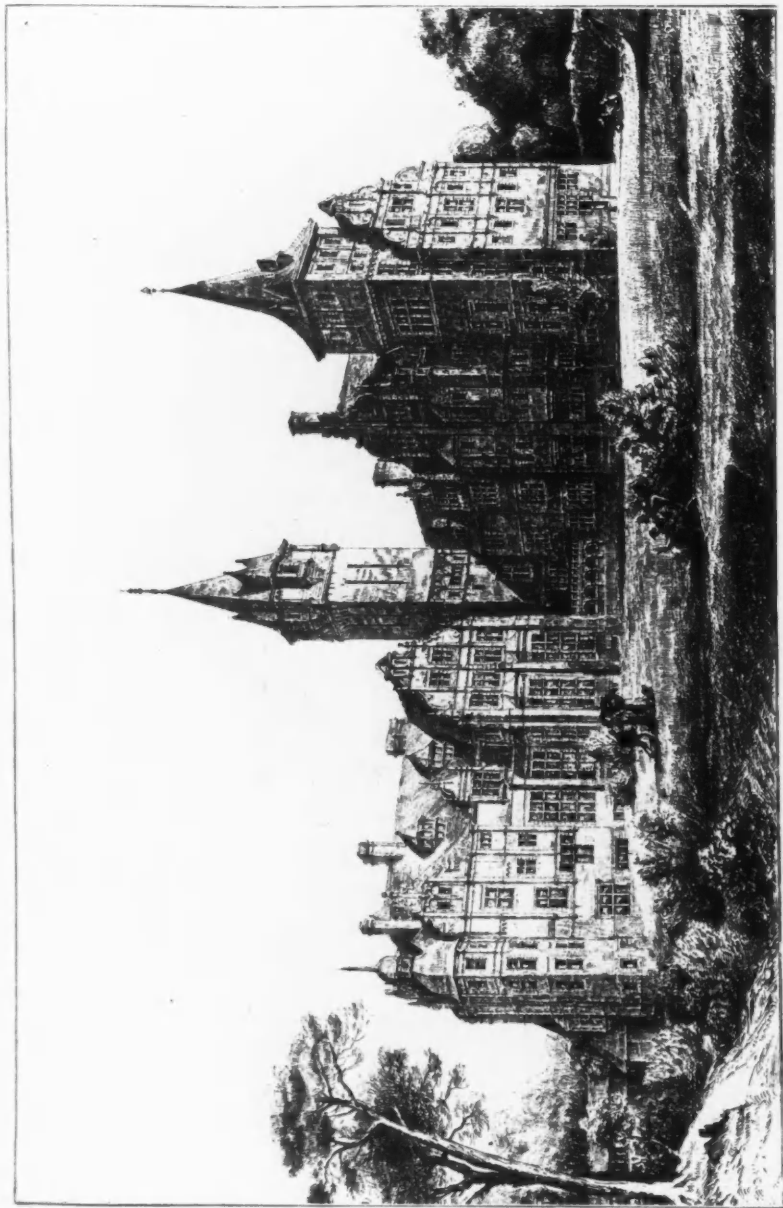


1791. *Trinity United Presbyterian Church, Pollokshields, Glasgow, WILLIAM G. ROWAN, Architect.*



1932. *New House, Palace Court, Kensington, for P. Ness, Esq., WILLIAM FLOCKHART, Architect.*

Ornamental Plaster Ceilings—Battiscombe & Harris, 49 & 50 Great Marylebone Street. Portland Place, London, W.



1875. *Convalescent Home at Swanley*, WOODD AND AINSLIE, Architects.

