

*Premium List*  
18TH ANNUAL  
*All-American Turkey Show*  
*January 20-24, 1941*  
CITY AUDITORIUM                      GRAND FORKS, N. DAK.



**FIRST AND FOREMOST OF THE WORLD'S  
EXCLUSIVE TURKEY SHOWS**

**OFFICERS**

C. D. Page, President; John O. Allen, Vice President; W. W. Blain, Sec'y-Treasurer; Frank E. Moore, Acting Manager and General Superintendent; George W. Hackett, Manager Emeritus; Alfred Malmberg, Floor Superintendent; J. A. Amble, Superintendent of Dressed Division.

**DIRECTORS**

A. G. Bjerken, Jos. B. Bridston, A. N. Cooper, Geo. Gilbertson, H. H. Herberger, Emil Johnson, H. M. Loughheed, Alfred Malmberg, J. J. Quam, J. C. Sherlock, Otto Thieke, Roy G. Utne, D. E. Whitman, H. S. Pond, A. C. Payne, C. E. Garvin.

# 18 YEARS OF THE ALL-AMERICAN

The All-American Turkey Show was the first exclusive turkey show ever held in the world when it first opened its doors at Grand Forks in 1922. Since that modest opening, with a few dozen turkeys of questionable quality, seventeen annual All-Americans have come and gone, each one portraying the great and continued improvements in the science of growing better turkeys, each one signalling the great advances in breeding and type that our modern 1940 birds possess today.

With the advent of the 1941 show it is hoped to make of the All-American, more and more, a "turkey industry exposition." While still continuing to completely cover all phases of both live and dressed bird competition it is hoped to attract the entire turkey industry: dressing, shipping, marketing, advertising, and activities aimed at increasing national turkey consumption.

The ultimate goal to reach will be a thorough and complete coverage of all angles pertaining to the entire industry.

"Continued Progress" is still the slogan at the All-American and, as in the past, this great show will be found in the fore in everything that makes for better turkeys.

ALL-AMERICAN SHOW ASSOCIATION

Dyke Page, President.

## EIGHTEENTH ANNUAL

# *All-American Turkey Show*

First and Foremost of the World's Exclusive Turkey Shows

January 20-24, 1941

\$1500 in Cash and Special Prizes

## OUR COMMITTEES

To perfect "team work," which is the purpose of the management, the following working committees have been named:

### SHOW ADVISORY COMMITTEE

Alfred Malmberg      Ole C. Nelson      Roy G. Utne      J. J. Quam      Herbie Olson

### FINANCE COMMITTEE

H. H. Herberger      C. D. Page      A. G. Bjerken

### EDUCATIONAL PROGRAM COMMITTEE

Wm. Page, Chairman      O. A. Barton      Mrs. Frank Bellamy

### ANNUAL BANQUET COMMITTEE

W. W. Blain, Chairman      John Hesketh      C. D. Page      J. C. Sherlock

## TURKEY "HEN CLUB" OF THE ALL-AMERICAN

The Turkey Hen Club will have a rest room at the show again this year. In connection with the rest room, there will be an information booth, where any one desiring information regarding the show program may obtain it.

There will also be a Reception Committee, to see that all visitors and exhibitors are made welcome. Make yourself known to the committee and they will see that you are well cared for.

### RECEPTION AND ENTERTAINMENT COMMITTEE

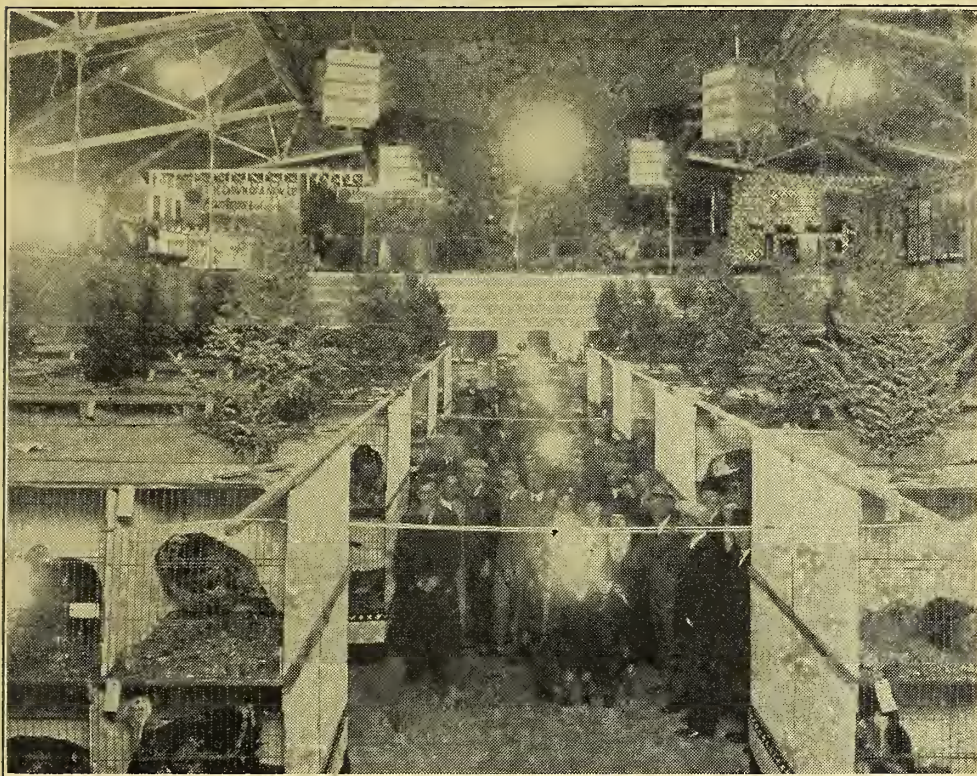
Mrs. Claude Wright, President, Turkey Hen Club . . . . . Aitkin, Minn.  
Mrs. Eric Norrie, Secretary, Turkey Hen Club . . . . . Crookston, Minn.  
Mrs. Frank Bellamy . . . . . Drayton, N. D.  
Mrs. Godfrey Morris . . . . . Neche, N. D.      Mrs. Mack Burnett . . . . . Cummings, N. D.  
Mrs. John O. Allen . . . . . Radium, Minn.      Mrs. Roy Vosper . . . . . Neche, N. D.  
Mrs. George Kirk . . . . . Niagara, N. D.      Mrs. Albert Payne . . . . . Towner, N. D.  
Mrs. Ole Nelson . . . . . Kensington, Minn.      Mrs. August Swenson . . . . . Gilby, N. D.  
Mrs. Frank Ralston . . . . . Crystal, N. D.      Mrs. William Eddie . . . . . Northwood, N. D.

### SHOW TO CLOSE FRIDAY NIGHT, JANUARY 24TH

It has been decided to officially close the All-American on Friday evening. No birds or exhibits may be removed until 8:00 A. M. Saturday morning.

## "COURT OF HONOR"

The Court of Honor has always been an attractive feature of this show and an educational demonstration as well. In this unique arrangement of highly decorated coops, fifteen of the "honor" representatives of the various breeds are placed on display, under proper labels and decorated with the respective trophies they have won. This display is a real attraction. The "Court of Honor" will occupy the stage as before.



Show room scene at a recent All-American

### DISPLAY OF TROPHY CUPS AND SPECIALS

All the valuable trophies listed in these pages will be on display at the show room, properly labeled with name of donor, and award. We shall be very proud of this great display.

Special prize offers that may be solicited by the committee or those that may be listed will be awarded by the show advisory committee. This will permit of Breeders' Specials being placed where they will be of the greatest good to the donor, the winner—and to the show.

#### SPECIAL PRIZE DONATIONS NOT LISTED

Special prize offers may be solicited by the committee or those that may be received after copy of premium list has closed, will be posted on the bulletin board at show and due disposition made of specials, same as those listed.



### EDUCATIONAL PROGRAM AT SHOW

The educational program for the coming event will be conducted during show week and will consist largely in demonstrations of practical phases in turkey management and much new talent will be present.



### BREEDERS' DISPLAY AND MASTER BREEDER AWARD

Exhibitors should read carefully rules 4 and 5 governing above awards. This new arrangement leading up to MASTER BREEDER AWARD is aimed to dignify and to enhance the value of the Master Breeder winning. The Gold Medal Trophy, to be annually awarded to the exhibitor receiving this distinction, is contributed by the First National Bank in Grand Forks. It will be regarded as a badge of honor, for achievement in turkey breeding, and an award never before equaled in like expositions. This award is original with the management of the All-American and will constitute the highest honor conferred on an exhibitor at this, the greatest of all Turkey shows.

It is proposed that the prizes of Breeder Displays be SPECIAL, and insofar as possible, contributed by breeders and specialty clubs.

## OUR JUDGES

Four nationally known leaders in their respective fields will place the awards at the 1941 All-American. No one of these is new to this area. They have either served before at the All-American or worked within the industry in this section. They, therefore, need no introduction to our exhibitors. Their decisions in judgment of placings will be looked forward to with expected satisfaction.

Judges Harry M. Lamon, president, American Poultry Association, and M. C. Herner, Winnipeg, Manitoba, Canada, will place awards on the Standard bred live classes.

Judge P. M. Pierce, supervisor of Federal Turkey Grading in Colorado and manager of the Denver Poultry Exposition, will place awards in the regular dressed department and in the live Broad-Breasted classes.

Kenneth L. Goss, chief inspector, Egg & Poultry Division, Department of Agriculture for the State of Minnesota, will place the awards in our new department—Commercial Box Pack. Although Mr. Goss may not be so well known to our breeder exhibitors, he is well known to marketing agencies in this area as a result of his association in the marketing work for a number of years. His experience in this field amply qualifies him to creditably handle the judging in this new department.

## ANNUAL BANQUET

This big social event has become the "high spot" of the week of the All-American. It will be held this year on Thursday night, January 23, at 6:30. A splendid program and entertainment is assured. Make reservations early at Information Booth at Show room. Dance follows the Banquet.

## GRAND CHAMPIONS

Champions will be designated for each breed, including Broad-Breasted, but there will be but **ONE GRAND CHAMPION**, a Reserve Grand Champion, and but **ONE MASTER BREEDER** award at the All-American.

# Information and Rules

## GOVERNING THE ALL-AMERICAN TURKEY SHOW

### BREEDS AND COMPETITION

1. All recognized breeds of turkeys, including Broad-Breasted, are eligible for entry. Competition will be for **SINGLE, PEN DISPLAY, BREEDERS DISPLAY, and SPECIAL PRIZES**. Singles will compete as per breed, age, and sex as follows: Adult Tom, Yearling Tom, Young Tom, Adult Hen, Yearling Hen, Young Hen. Because there is no established basis of comparison between Standard and Broad-Breasted classes the Broad-Breasted entries will not compete for Master Breeder or Grand Champion of entire show.

### EXHIBITION MATED PEN

2. This entry must consist of one tom and two hens competing as a unit and cannot compete in the single classes. Pens must be all young or all old birds. In the latter, yearling and adult birds may be combined. Birds making up the pen are to be judged on Standard quality with due credit being allowed for proper offsetting defects as between the male and females, for breeding results.

### GENERAL DISPLAYS

3. A Display shall consist of not less than six birds of the same breed, two of which must be males, entered by one exhibitor. Pen entries may be used in making up displays and will count as two singles in display requirement. Winnings made on birds entered in excess of this requirement will also count on awarding display prizes. The method of computing display winnings shall be as follows: First counts six points; Second, five; Third, four; Fourth, three; Fifth, two; and each award from Fifth to Fifteenth to count one point. Pen winnings count double. In each individual class of the breed the total points won by an exhibitor will be multiplied by the number of entries in this class, with twenty-five as the maximum, and so on through the breed classes, and the sum total thus arrived at shall be the display count for such exhibitor.

### BREEDER DISPLAY

(Do not confuse this competition with that of "GENERAL DISPLAY" described in Rule 3.)

4. To qualify for "BREEDER'S DISPLAY" an exhibitor must enter one or more birds in each of the six single classes of a breed and **MUST** have bred not less than four of the competing birds in his entry. Where this requirement is met, the exhibitor should so indicate on his entry blank. There is no extra fee for this entry. In this competition each breed competes separately, the number of placings being determined by the number of entries in each breed competition. Honor ribbons and such special prizes as may be provided by the various breed **CLUBS** will be awarded.

The method of making awards on Breeder Displays will be the judges' estimated combined scores of the six birds comprising each entry regardless of their placings in the open classes. The winner of first in each of the separate breed competitions automatically becomes a candidate to compete for the high honor of Master Breeder Award. The basis of this award will be the comparative, approximate score between the entries of the several breeds under approval of the majority of the officiating judges, Standard of Perfection color handicaps to apply.



## THE MASTER BREEDER AWARD

5. A Beautiful Gold Medal suitably inscribed with the winner's name, will be the ONE AND ONLY AWARD in this competition annually. The award will be made by comparison between the winning Breeders' Displays of each of the respective breeds in the Standard classes.

This award, which reflects the ability and standing of the breeder, as demonstrated in the entry receiving the award, will be considered the **Highest Honor** conferred annually at the All-American Show.

### ENTRIES CLOSE JANUARY 13

6. Entries postmarked bearing the above date will be accepted but in order to get shipping tags in time earlier entries are desired. Early entries will be much appreciated and will greatly facilitate office work.

#### ENTRY FEES

Entry fee, singles . . . . .	\$2.00
Entry fee, pens . . . . .	4.00

Make entry fee checks payable to W. W. Blain, Secretary-Treasurer. Where exhibitors are making entries in the dressed department, they may authorize deductions from sales returns on dressed birds for amount of entry blanks in both departments.

Entries should be made on All-American entry blanks and all transportation charges, prepaid. Coops will be reserved for all birds entered and no entry fees will be returned except in case of special agreement where it is shown that delivery of birds was impossible.

#### LEG BANDS

7. All birds must be banded and numbers must correspond to those entered on entry blanks. In addition to this, the management will place on every bird, when taken from shipping coop, a metal sealed band duly marked and numbered to correspond with the coop number allotted to each bird. Entries will have to be in on time to make this possible. There will be no possibility of a mixup growing out of duplicate numbers of different exhibitors. No charge for this banding.

#### DATE FOR SHIPMENT

8. Exhibitors from a distance should time their shipment to reach Grand Forks by Sunday, January 19th. Express shipments will be delivered promptly and with great care. Those who deliver their birds by truck can do so up to 10:00 A. M. Monday, January 20th. Judging will begin promptly at 1:00 P. M.

#### COOPING AND HANDLING

9. This work will be entirely in the hands of competent and experienced turkey breeders, appointed for the purpose. The management, realizing the importance of proper handling of high class turkeys, and the hazards that accompany exhibiting such birds, have taken every possible precaution to make it impossible to have birds exchanged or their plumage damaged by careless handling, and, through strict inspection and sanitary methods, to prevent exposure to disease. Even temperature and good ventilation will be enforced in the show room and no birds will be handled except by those duly authorized.

#### UNIFORM COOPING

10. There will be uniform cooping of regulation size, throughout the show and in no case, except as provided for pen, will there be more than one bird allowed in a coop. We are so limited in room that no extra birds can be allowed in the show.

#### EXHIBITORS' NAMES ON COOP TAGS

11. We feel this practice must be continued. To do otherwise at once places suspicion upon the integrity of the judges, and denies the exhibitor the advertising due him. The system of judging employed at the All-American has been one of its greatest educational features. Exhibitors are cordially invited to be present during the judging and to hold their own or others' birds, but please be courteous to the judge who has so arduous a task to perform, and considerate of other exhibitors whether present or absent. And please do not bother the judge with questions until awards have been made.

### JUDGES' ASSIGNMENTS

12. Judges' assignments will be made by Show Manager as judging progresses.

Each judge will be held responsible for the awards made in the classes assigned him, but may feel free to call on the other officiating judges to assist him in arriving at decisions, if he so desires. All the judges will cooperate in making special and sweepstakes awards.

#### EVERY CLASS A "UTILITY CLASS"

Exhibitors are hereby reminded that the Standard of Perfection recognizes only specimens of high utility value as conforming to standard conformation. Judges will be especially requested to observe the NEW STANDARD SCALE OF POINTS which places 68 of the 100 points on shape and condition, in awarding prizes; therefore, a bird of poor conformation cannot win a high place regardless of how good the color.

#### AWARDS FINAL

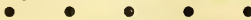
13. The awards of the judges will be final and no protests will be entertained. For unmistakable evidence of faking, or for undue interference with the judging, judges may refuse to handle further entries of such exhibitors and any awards that may have been made to this entry will be withheld. Official announcement of the awards will be made through the manager's office only.

#### NOT COVERED BY RULES

14. Should decisions be necessary not covered in the foregoing Rules, such matters will be referred to the show Advisory Committee whose ruling shall be final. Courtesy, consideration and good sportsmanship is expected from every exhibitor, and on this basis we guarantee every exhibitor a SQUARE DEAL.

#### SALES SERVICE FREE

15. This year we offer every convenience that can be rendered by our regular floor force without the employment of a special sales agent. "FOR SALE" tags will be on all coops where birds are listed for sale and a special list of same will be kept in the Manager's office for reference. No change in reshipment of any bird will be made unless duly authorized by the exhibitor making entry.



### ONE THOUSAND DOLLARS IN REGULAR CASH PRIZES

Note the arrangement and wider distribution of prize money.

Every award a cash prize.

Sixty or more entries in class, award 25 places: first 5 places, \$4.00 each; second 5 places \$3.00 each; third 5 places \$2.00 each; next 10 places \$1.00 each.

Forty to sixty in class, award 20 places: first 5 places \$3.50 each; second 5 places \$2.00 each; next 10 places \$1.00 each.

Twenty-five to forty in class, award 15 places: first 5 places \$3.00 each; second 5 places \$2.00 each; third 5 places \$1.00 each.

Fifteen to twenty-five in class, award 9 places: first 3 places \$3.00 each; second 3 places \$2.00 each; third 3 places \$1.00 each

Ten to fifteen in class, award 7 places: first 4 places \$2.00 each; second 3 places \$1.00 each.

Four to ten in class, award 5 places: first 2 places \$2.50 each; second 3 places \$1.00 each.

One to four in class, award up to 4 places: 1st \$2.50; 2nd \$2.00; 3rd \$1.50; 4th \$1.00.

Where there is but one entry if worthy, 1st award and 2nd money will be given.

#### PEN PRIZES

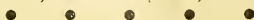
Twenty or more entries in class, award 12 places: first 3 places \$5.00 each; second 3 places \$4.00 each; third 3 places \$2.50 each; fourth 3 places \$2.00 each.

Twelve to twenty in class, award 9 places: first 3 places \$5.00 each; second 3 places \$3.00 each; third 3 places \$2.00 each.

Six to twelve in class, award 6 places: first 2 places \$4.00 each; second 2 places \$3.00 each; third 2 places \$2.00 each.

Four to six in class, award 4 places: first 2 places \$4.00 each; second 2 places \$2.00 each.

Less than four in class: first \$3.00; second \$2.00; third \$1.00.



### GENERAL DISPLAY CASH PRIZES

In every breed where regular entries constitute not less than three general displays, (Note rule in General Display) Cash Prizes will be paid as follows:

Best Display in Breed . . . . .	\$7.50
Second Best Display . . . . .	5.00

In cases where entries constitute only two general displays, the awards will be made, but only second money will be paid on 1st award. No award will be made where there are less than two displays in competition.

The only requirement to qualify for General Display is to have six entries in the single class, two of which must be males, or one pen may take the place of two singles.

**CERTIFICATES OF WINNING IN PLACE OF RIBBONS**

This is an innovation which has met with hearty approval by exhibitors. An especially fine certificate containing full list of exhibitor's winnings, will take the place of ribbons previously used.



**\$30.00 IN CASH ON DISTANCE DISPLAY SHIPMENTS**

The All-American Association offers \$30.00 in cash on display winnings to exhibitors whose shipments have come a distance of 500 miles or more, one way. Distance computed as the crow flies.

Best Display . . . . .	\$15.00
Second Best Display . . . . .	10.00
Third Best Display . . . . .	5.00



*Sweepstakes Trophies*

**SWEEPSTAKES AWARDS**

This show recognizes and has established six grand sweepstakes awards, designated annually by suitable outstanding trophies which are listed elsewhere with credit to the donors. These high honor places are as follows:

- THE MASTER BREEDER SWEEPSTAKES DISPLAY
- GRAND CHAMPION OF THE SHOW
- CHAMPION YOUNG TOM
- CHAMPION YOUNG HEN
- SWEEPSTAKES GENERAL DISPLAY
- SWEEPSTAKES PEN

To the first goes the "MASTER BREEDER AWARD," a beautiful gold medal, most coveted of all prizes. To each of the other five, a beautiful Silver Loving Cup, suitably engraved.

"First and Foremost of All Turkey Shows," the All-American has always been noted for its generous prize awards and especially for the richness and variety of its trophies.

Continuing this policy at the 1940 show, the trophies this year will be more varied, more extensive and more beautiful than ever before, comprising as featured trophies articles of utility, both for personal use and to grace the finest home. They will be on display all week at the show.

**MORE THAN 50 TROPHIES AND SPECIAL PRIZES**

The trophy list and special awards comprise more than 50 items, including beautiful serveware handsome cups and useful merchandise prizes. Added to the generous cash and feed specials offered this year the total prize offerings at the 18th All-American will exceed \$1500.00 in value. And the value of many of these winnings to the exhibitor cannot be estimated in cash.

The All-American Turkey Show takes this opportunity to express its appreciation to the many donors listed below whose interest in turkey growing prompted them to donate the award. They are contributing something of real value to the progress of breeding and rearing of finer turkeys and hence to the greater prosperity of a large group of farmers.

- Master Breeder—Gold Medal—By First National Bank of Grand Forks.
- Grand Champion—Silver Cup Trophy—By Red River National Bank and Trust Company, Grand Forks.
- Champion Young Tom—Silver Cup—Turkey World, Mt. Morris, Ill.
- Champion Young Hen—Silver Cup—Grand Forks Herald.
- Champion Broad-Breasted—Trophy by Grand Forks and East Grand Forks Merchants Association.
- Sweepstakes Display—Silver Cup—By Fargo Forum, Fargo, N. Dak.
- Sweepstakes Pen—Silver Cup—By Bennie Berger Amusement Co.
- Best Display Bronze Class — Hubbard's Sunshine Trophy — Hubbard Milling Co., Mankato, Minn.
- Best Display Narragansetts — Hubbard's Sunshine Trophy — Hubbard Milling Co., Mankato, Minn.
- Best Display Bourbon Reds — Hubbard's Sunshine Trophy — Hubbard Milling Co., Mankato, Minn.
- Best Display White Hollands — Hubbard's Sunshine Trophy — Hubbard Milling Co., Mankato, Minn.







- Best Display Blacks — Hubbard's Sunshine Trophy — Hubbard Milling Co., Mankato, Minn.
- Best Display Slate Turkeys — Hubbard's Sunshine Trophy — Hubbard Milling Co., Mankato, Minn.
- Best Display Broad-Breasted—Serviceware Trophy by Kem Temple of the Mystic Shrine, Grand Forks.
- Best Display, Minnesota—Serviceware Trophy—The Kiwanis Club, Grand Forks.
- Best Display, North Dakota, South Dakota—Special Design Dakota Plaque—Dakota Farmer, Aberdeen, South Dakota.
- Best Display, North Dakota—Serviceware Trophy—Greater North Dakota Association.
- Best Display, South Dakota—Serviceware Trophy—Hotel Dacotah, Grand Forks.
- Best Display, Wisconsin, Iowa, Illinois — Serviceware Trophy — All-American Turkey Show.
- Best Display, Central Western States—Silver Cup Trophy—All-American Turkey Show.
- Best Young Pen, North Dakota—Serviceware Trophy—North Dakota Bankers Assoc'n.
- Best Young Pen, Minnesota—Serviceware Trophy—East Grand Forks Commercial Club.
- Best Young Pen, South Dakota—Serviceware Trophy—Grand Forks Rotary Club.
- Best Young Pen, Wisconsin—Serviceware Trophy—All-American Turkey Show.
- Best Four Young Toms—Serviceware Trophy—The Cavaliers, Grand Forks.
- Best Four Young Hens—Silver Cup Trophy—All-American Turkey Show.

## SPECIAL PRIZES

The following trophies and unique special prizes represent not only worthwhile cash value, but also honor awards for both the larger and smaller exhibitor. They are well worth striving for. These prizes are in addition to the regular and special prizes offered in this premium list.

### BRONZE BREED SPECIAL

The All-American Bronze Club offers three trophies in the form of Silver Service Sets as follows:

- Best General Display—By a member.
- Best Breeders Display—By a member.
- Best Display of Bronze Dressed Turkeys—Open to all exhibitors in this class.

### BREEDERS SPECIAL PRIZES

Mr. and Mrs. Frank Ralston, Crystal, N. Dak., breeders of standard quality Bronze turkeys, offer a beautiful trophy to the exhibitor from Manitoba showing 4 or more birds and winning the greatest score on points.

Mr. and Mrs. Roy Utne, Ortle, S. Dak., offer a beautiful Service Trophy to Standard Bronze exhibitor entering 4 or more birds from distance of more than 500 miles and winning the greatest number of display points.

Mr. and Mrs. John O. Allen, Radium, Minn., offer two Serviceware trophies to the exhibitors winning last 2 placings, Standard Bronze Young Toms, Live Class.

The International Narragansett Turkey Club Offers Their Beautiful Club Ribbons at This, Their Annual Meet, as follows:

On Best Mature Tom; Best Mature Hen; Best Young Tom; Best Young Hen; Best Display; Best Pen and Champion Narragansett, to Club members only. Dues and new memberships should be remitted to Mrs. Ole Nelson, Secretary, Kensington, Minn., before awards are made.

This Club also offers three trophies in the form of Silver Service Sets, as follows:

- Best Breeders Display—By a member.
- Second Best Breeders Display—By a member.
- Best Display of Narragansett Dressed Turkeys—Open competition.

J. J. Quam, President of the Narragansett Club, Beltrami, Minnesota, offers two beautiful trophies to be awarded to the Narragansett exhibitors entering six or more birds for the first time at this show. One exhibitor from North Dakota, and one exhibitor from Minnesota.

Mr. and Mrs. Ole Nelson, owners of Oakdale Turkey Farm, Kensington, Minn., offer a beautiful mantle clock to the exhibitor of Narragansetts at the show who turns in the most club memberships up until 3:00 P. M. on Thursday of show week.

Mrs. Wm. Eddie, Northwood, N. Dak., offers a fine trophy to the new exhibitor entering not less than a display (six birds) and winning the largest number of display points.

Mr. and Mrs. Albert Payne, Towner, N. Dak., prominent Narragansett breeders, offer a special prize to be awarded in the Narragansett live classes. Details of this award will be announced.

## BREEDERS SPECIALS FOR OTHER BREEDS

### BOURBON REDS

To the new exhibitor at the All-American entering 4 or more birds and winning the greatest number of display points, a beautiful serveware trophy is offered by Mr. and Mrs. Otto Thieke, Beardsley, Minn., breeders of fine Bourbons.

### BLACK TURKEYS

To the new exhibitor of Black Turkeys at the All-American entering not less than a display of the required six birds, Oakdale Turkey Farm, Kensington, Minnesota, breeders of Ebony strain Black turkeys, offers a beautiful special prize to such exhibitor winning greatest number of display points.

### SLATE TURKEYS

For entry of four or more Slate turkeys, coming the greatest distance, the All-American Association will give \$5 in cash and award a beautiful trophy.

## NATIONAL WHITE HOLLAND CLUB SPECIALS

It is expected that the usual White Holland Club Specials as offered at National Shows will be awarded to Club members in good standing. For further information, write George Jeffreys, Secretary, Calcium, N. Y.

J. M. Olson, Webster, N. D., breeder of high class White Hollands, offers a beautiful trophy to the exhibitor of White Hollands showing for the first time at the All-American and winning most display points. Entry must contain four or more birds.

## MERCHANDISE SPECIALS

- One 15-lb. drum Avi-Tab to exhibitor, in the Dressed Turkey Division, entering 15 or more birds and winning the least number of points.
- One 6-lb. drum Avi-Tab to exhibitor, in the Dressed Turkey Division, receiving least number of display points in Bronze.
- One 6lb. drum Avi-Tab to exhibitor, in the Dressed Turkey Division, receiving least number of points in Narragansetts.
- One 8-oz. bottle Cam-Pho-Sal to exhibitor in Dressed Turkey Division receiving least number of display points in White Hollands.
- One 300 Phen-O-Sal to exhibitor in Dressed Turkey Division receiving least number of display points in Bourbon Reds.

### THE NATIONAL BAND AND TAG COMPANY, NEWPORT, KY., OFFERS:

- Five \$1.00 Merchandise Certificates, to be awarded as follows:
  - One certificate each, to the first three entries of six or more birds for the live exhibit.
  - One certificate each to the first three making entry of ten or more birds in the dressed bird exhibit.

## NOTICE

Due to the early date on which this premium list goes to press all Feed Prizes and other special prizes not yet completed, will be listed in the January issue of THE AMERICAN TURKEY JOURNAL.

## AMERICAN TURKEY JOURNAL SPECIAL PRIZES

Five pairs of beautiful hand turned candlesticks are offered by THE AMERICAN TURKEY JOURNAL this year and will be awarded to the 5 lady exhibitors coming from the greatest distance, and exhibiting in the following breeds: Bronze, Narragansett, White Holland, Bourbon Red and Black turkeys.

In making these awards the distance will be computed from the route actually traveled by the exhibitor coming from her home to the show. A Rand McNally official road map will be used in figuring auto travel; and official railroad map for rail travel.

These candlesticks are the most attractive ever offered on this award. They are hand turned from walnut and curly maple and will be a useful and beautiful addition to any table.

## *The Homecoming Banquet*

**Thursday Evening, January 23, at 6:30 P. M. Hotel Dacotah**

is the highlight of All-American week. At this festive board gather the growers, the judges, the representatives of allied industries, and everyone else interested in turkey growing. A dance follows the banquet.

**PLAN TO ATTEND.**

**TICKETS ON SALE AT THE SHOW.**

# Dressed Turkey Department

Entries in this Department close at 1 P. M., January 20th. Enter single birds only. Ten entries, any class, to compete for display. Exhibit on display January 21-22-23-24. All breeds compete separately.

Twenty-eight open class competitions—Breed Champions; Breed Display; Sweepstakes Champion Display; Grand Champion Dressed Turkey.

J. A. AMBLE, Superintendent of Dressed Turkey Division.  
P. M. PIERCE, Denver, Colorado, Judge.

## RULES GOVERNING THE DRESSED TURKEY EXHIBIT

### COMPETITIONS AND CLASSIFICATIONS

1. Competition will be by breeds and all entries shall be made on single birds only.

#### CLASSIFICATION IN BRONZE AND BROAD-BREADED SHALL BE AS FOLLOWS:

Old Tom	Young Toms under 20 lbs.	Young Toms 20 lbs. or over
Old Hen	Young Hens under 14 lbs.	Young Hens 14 lbs. or over
<b>FOR ALL OTHER BREEDS</b>		
Old Tom	Young Toms under 18 lbs.	Young Toms 18 lbs. or over
Old Hen	Young Hens under 12 lbs.	Young Hens 12 lbs. or over

A Display shall consist of not less than ten birds entered in four or more of the above classes, but all winnings by an exhibitor, in one breed, will count on display score. Liberal Display Prizes are offered.

### ENTRIES CLOSE

2. Entries must be made by 1 P. M., January 20th. A fee of 50c per bird will be charged. No extra fee to compete for Display Prizes. All entries must be delivered at Show room by 6 P. M. January 20th.

### VERY IMPORTANT!

### BIRDS MUST BE TAGGED BY OWNER

3. Every bird entered by an exhibitor should have tag attached to right leg giving name and address of exhibitor, name of breed, class as per age and weight, and weight when packed. Such tags will be furnished by the Association when application for same is made in advance.

### WEIGHING AND CLASSIFYING

4. All birds will be carefully weighed when unpacked and classified according to weights as per Rule 1. Record will be made of weights listed by exhibitors. Classification need not be made by exhibitors except to state whether old or young. At the option of the judge classification may be changed to conform to U. S. Standard grades. Entries that will not grade U. S. Choice or better will not be placed on exhibit but will be disposed of to best possible advantage and full returns made to exhibitor.

### JUDGING THE EXHIBIT

5. Judge P. M. Pierce, of Colorado, will place the awards, judging to begin at 9:00 A. M., January 17th.

Overweight penalty will apply only to young toms weighing more than 27 pounds. This conforms to the standard classes wherein an excess of two pounds above standard weight is allowed. Young toms weighing more than 27 pounds will be cut two points in score for each pound over that weight; Broad-Breasted class excepted.

### AWARDING DISPLAYS ON DRESSED BIRDS

6. Display prizes will be awarded by points according to winnings made in the single competitions, in each breed as follows: 1st 15 points, and dropping one point with each receding placing down to the 15th place, one point additional to be added for each placing below 15th to, and including, 25th place. No further points will be allowed by additions on account of large classes.

7. In case of no competition for display in a breed, 60 per cent of the score computed on the foregoing basis shall be taken as the comparative score in this breed display.

8. In competitions between breeds to determine winners of Sweepstakes Prizes the award shall be made by the officiating judge, by comparison, using ten best birds only; the highest placed in the entry of each respective breed, best display, which shall be eligible to compete for sweepstakes honors. Display scores are not to be considered in awarding this grand prize.

9. REGULAR CASH PRIZE SCHEDULE FOLLOWS

9 Entries or Less in Competition

1st, \$1.00; 2nd, 75c; 3rd, 50c; 4th, 50c; 5th, 25c.

10 to 15 Entries—9 Awards

1st 3 places, \$1.00 each; 2nd 3 places, 75c each; 3rd 3 places, 50c each.

16 to 24 Entries—15 Awards

1st 5 places, \$1.00 each; 2nd 5 places, 50c each; 3rd 5 places, 25c each.

25 or More Entries—20 Awards

1st 5 places, \$1.25 each; 2nd 5 places, \$1.00 each; 3rd 5 places, 50c each;  
4th 5 places, 25c each.

10. In cases where there is but one entry, if worthy, 1st award and 2nd money will be given.

DISPLAY AND SPECIAL PRIZES CONTRIBUTED

11. The management wishes to call the attention of exhibitors to the fact that most of the valuable Special Prizes and Trophies offered herewith, have been contributed by business firms, civic clubs, breed clubs, and individuals who are interested in the All-American and in the Turkey Industry in general, and every award will be made as listed according to the rules and regulations. In case any prize is not competed for the special Show Committee will place it elsewhere, if consistent to do so.

A GRAND ARRAY OF SPECIAL PRIZES  
ON DRESSED TURKEYS

TROPHIES, CASH AND MERCHANDISE

Never Before Has There Been Offered on a Dressed Bird Exhibit Such an  
Extensive Classification for Competitions or Such a Combined  
Array of Cash and Valuable Special Prizes.

GRAND AWARDS AND TROPHIES

Exhibitors in the Dressed Turkey Division of the show will please note that we are here offering on every special competition the same High Class, Beautiful and Exclusive Trophies that are being offered on the live bird competitions. Following is a list of Trophies, with names of donors and to what competition they will be awarded:  
Grand Champion Dressed Turkey—Trophy—By Red River Produce Co.

Sweepstakes Champion Display—Trophy—State Mill & Elevator, Grand Forks.

Best Display of Dressed Turkeys, Combining the three states: Iowa, Minnesota and Wisconsin—A beautiful Serviceware Trophy by All-American Turkey Show.

Best Display of Bronze Turkeys—Serviceware Trophy by First National Bank, Grand Forks.

Best Display of Narragansett Turkeys—Serviceware Trophy—by Lions Club, Grand Forks.

Best Display of White Holland Turkeys—Serviceware Trophy—by All-American Turkey Show.

Best Display of Bourbon Red Turkeys—Serviceware Trophy—By the All-American Show Association.

Best Display of Black Turkeys—Serviceware Trophy—By All-American Show Assoc'n.

Champion Bronze Turkey—Special All-American Ribbon.

Champion Narragansett Turkey—Special All-American Ribbon.

Champion White Holland Turkey—Special All-American Ribbon.

**USE THE ENTRY BLANK attached in the center of this Premium List. Early entries greatly aid us in giving your birds the best of handling.**

Champion Bourbon Red Turkey—Special All-American Ribbon.  
Champion Black Turkey—Special All-American Ribbon.  
Champion Slate Turkey—Special All-American Ribbon.

• • • • •

## SPECIAL AWARDS

**\$135.00 IN CASH SPECIAL PRIZES**

Contributed by Co-operating Firms as follows:

Hubbard Milling Co., Mankato, Minn.....	50.00
State Mill & Elevator, Grand Forks.....	50.00
Red River Produce Co.....	25.00
Bridgeman Creameries, Inc., Crookston.....	10.00

• • • • •

## COMMERCIAL BOX PACK DEPARTMENT

This is a new department being introduced at the All-American for the first time this year. The purpose is two-fold; first, to try to make the All-American more all-industry inclusive by thus attracting to it the marketing or merchandising agencies; second, to better acquaint breeders and producers with the methods and problems of marketing agencies and vice versa, to the end that a better understanding and appreciation between producers and marketing agencies may exist.

Judging will be based on merchandising ability or sales appeal of the pack, consideration being given first to quality of the merchandise, its fleshing, fattening, dressing and finish condition, and second to the uniformity and style of the pack, the general appearance of the package, and to such other factors as the judge may deem necessary or advisable.

The following classes and lots are available in which exhibits may be made:

**Class I — Young Hens**

- Lot 1 — 8 to 10 lbs.
- Lot 2 — 10 to 12 lbs.
- Lot 3 — 12 lbs. and over

**Class II — Young Toms**

- Lot 4 — 12 to 14 lbs.
- Lot 5 — 14 to 16 lbs.
- Lot 6 — 16 to 18 lbs.
- Lot 7 — 18 lbs. and over.

There will be three places made in each class—1st, 2nd and 3rd. Ribbons and Certificates of Award will be made for each winning.

There will be a Champion Young Hen Pack and a Champion Young Tom Pack and Grand Champion Pack for which suitable trophies will be awarded.

Entry fee shall be \$1.00 per box. An exhibitor may enter as many boxes in the different classes as he desires. Exhibits are limited to merchandising agencies.

Exhibitors should advise the All-American management of disposition to be made of entries after the show. All exhibits should be shipped in time to reach Grand Forks not later than Monday, January 20th.

• • • • •

## DRESSED DIVISION SPECIALS

### Grand Forks Seed Company Feed Special Prizes

500 pounds of PURELINE Turkey Grower to Best Dressed Display, Bronze, Grand Forks or Polk counties.

• • • • •

### State Mill & Elevator Commercial Feed Division, Grand Forks, N. Dak.

offer a special Sweepstakes Champion Display Trophy in the Dressed Bird division. The makers of "Dakota Maid" Feeds are also donating all the turkey feed required at the All-American Show during the show week.

• • • • •

In awarding all feed prizes, the Display winning the Sweepstakes Honors will not be eligible to other feed prizes, but in this breed will scale down one place for the award.

• • • • •

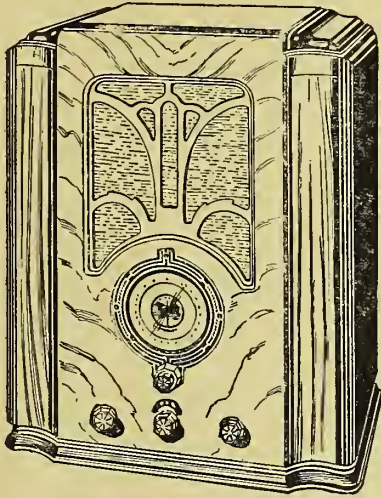
### Hubbard's Sunshine Turkey Starter Specials

The Hubbard Milling Co., Mankato, Minn., offers 600 pounds of their Turkey Starter as follows:

100 pounds each, to the lowest scoring Displays in the Dressed Division, in Bronze, Narragansetts, White Hollands, Bourbon Reds, Blacks and Slates. If less than two entries compete for these specials in any of the named breeds the awards will be transferred to the Live Division.

## THE POPPLER RADIO AWARD

THE POPPLER PIANO & FURNITURE CO., of Grand Forks, again offers this year a beautiful Philco Farm Radio as a Special Award in the Dressed Division. This is one of the finest awards in the entire show.



### TO BE AWARDED TO:

The Best Display of Dressed Birds exhibited by a grower residing in either: Traill, Steele, Grand Forks, Nelson, Walsh, Pembina or Cavalier counties in NORTH DAKOTA; OR: Norman, Polk, Red Lake, Pennington, Marshall, Kittson or Roseau counties in MINNESOTA.

No exhibitor who has won this award in prior years is eligible to compete for it again this year.

This competition is open to every exhibitor in the territory named, except to such exhibitors as may have won this grand prize at previous shows. No special mention need be made that exhibitor is competing for this prize, but Rule No. 1 of the Dressed Turkey department should be studied and observed. Turkeys may be of any of the six standard breeds, but not of cross breeding. Remember, the larger your entry the better your chance of winning.

The Grand Prize is a Model 105B Philco Farm Radio. It is 1½ volt battery operated with four new type, low drain tubes. Batteries last from 750 to 1000 hours before requiring replacement. Mounted in a handsome cabinet of beautiful walnut. This is one of the finest farm radios on the market today.

### CASH PRIZES ON DISPLAYS

Sweepstakes Champion Display.....	\$15.00
(The champion display will be barred from the following display awards)	
Best Display of Bronze.....	10.00
2nd Best Display of Bronze.....	7.50
3rd Best Display of Bronze.....	2.50
Best Display of Narragansetts.....	10.00
2nd Best Display of Narragansetts.....	7.50
3rd Best Display of Narragansetts.....	2.50
Best Display of White Hollands.....	10.00
2nd Best Display of White Hollands.....	7.50
3rd Best Display of White Hollands.....	2.50
Best Display of Bourbon Reds.....	10.00
2nd Best Display of Bourbon Reds.....	7.50
3rd Best Display of Bourbon Reds.....	2.50
Best Display of Black Turkeys.....	10.00
2nd Best Display of Black Turkeys.....	5.00

### CANNED TURKEY EXHIBIT

The following rules have been submitted by the Home Economics Department of the North Dakota Agricultural College and will govern the exhibit.

An attractive list of Cash Prizes and valuable trophies will be provided for this exhibit. The winning exhibits will be sold at auction and returns made to owners, unless reserved by exhibitor. Every effort will be made to dispose of entire exhibit at a good return.

The pressure cooker method is recommended by the U. S. Department of Agriculture for all canning of turkey.

A score card will be used in judging and placings will be given to:

1. The best single entry. 2. The best collection of jars showing four methods of preparing turkey. Either quart or pint jars may be used.

### RULES

1. All jars exhibited must be canned by the exhibitor.
2. The method used in canning shall be stated on the label.
3. The method to be followed in preparing the canned food for the table shall be stated on the label. 4. Canned turkey will not be opened for judging.
5. No jar should be entered in both single entry and collection exhibits.
6. No article will be placed unless worthy.

### SPECIAL PACK SINGLE TURKEY PACKAGE

This new feature and added competition has met with much favor and will be continued. Its purpose is to display a desirable package for transporting a single packed turkey direct from producer to consumer in attractive, yet practical form to serve the better class of trade. Prizes have been increased and awards extended. A suitable trophy will be awarded in this class this year. Cash prizes will be: 1st \$5.00; 2nd \$4.00; 3rd \$3.00; 4th \$2.00; 5th to 10th, \$1.00 each.

### RULES GOVERNING ENTRY AND COMPETITION

1. An entry fee of 50c per bird will be charged. Competition open to all but not more than two entries from one exhibitor or from one farm will be accepted. Exhibitors must prepare their own pack.

2. It is desired that all entries be displayed in uniform, heavy fibre containers which will be furnished at a charge of 25c to cover cost and postage, including cellophane paper, by the management, on receipt of entry. Make entry early to permit time to forward container.

3. Birds are to be freshly full drawn, thoroughly chilled, oven ready without stuffing, and well wrapped in cellophane paper. It is recommended that turkey hens of not over 15 lbs., dressed, be used but birds may be larger at option of exhibitor. Size of carton will be 18x9x8 inches. The package should be wrapped and labeled as for shipment, even if not shipped to the show.

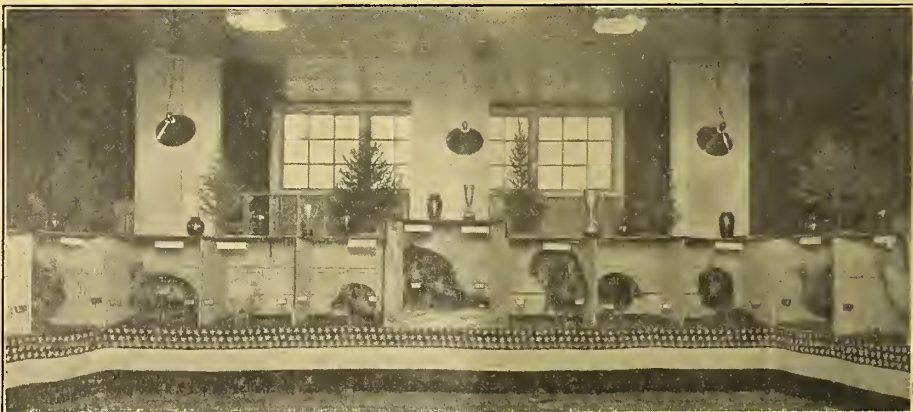
4. Exhibitors are to use their own ideas as to the style of wrap, amount of decoration, string or ribbon for tying, label, etc.

5. Awards will be made on the following basis: quality and preparation of carcass, 40%; manner of packing for transportation, labeling, etc., 30%; style of wrap, decoration and appeal to buyer, 30%.

6. All birds placing in this competition will be auctioned off by an experienced auctioneer and full returns made to each exhibitor. Auctioned birds in the past have always brought satisfactory premiums well over the market. Every effort will be made to obtain best possible prices for all birds, whether placing or not. Exhibitors who so desire may dispose of their own entries.

7. Exhibits must be in place before noon, January 21st. Packages will be held intact as delivered until the judges take charge to make awards.

A competent auctioneer, Mr. M. B. Potratz, from Dr. Salsbury's Laboratories, Charles City, Iowa, will auction off both Special Pack Single Turkey entries and Canned Turkey entries.



"The All-American Champions." The Court of Honor displays the Grand Champion of the Show and all breed champions. It is a feature at every All-American.