

## **Historic, archived document**

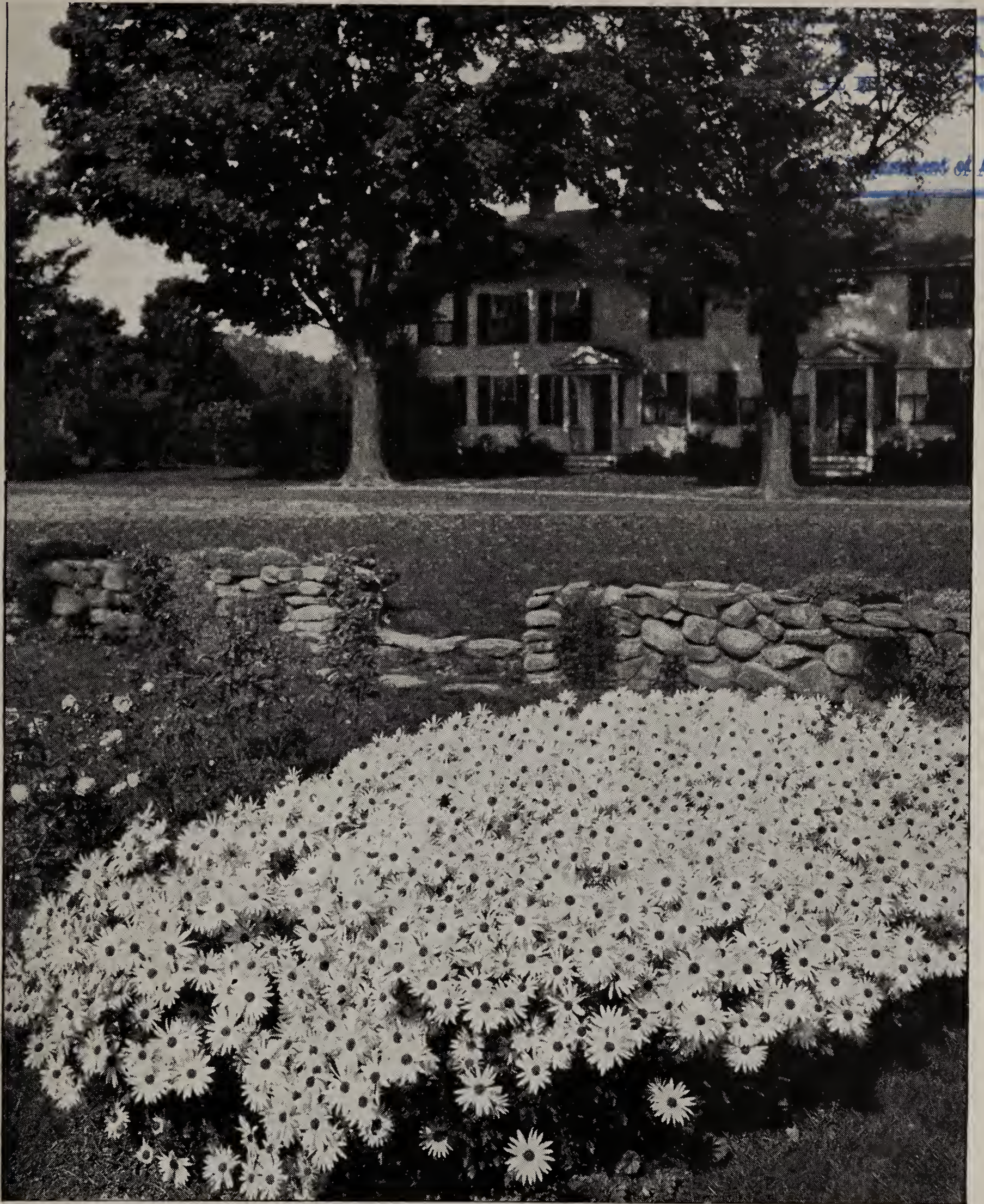
Do not assume content reflects current scientific knowledge, policies, or practices.



62.13

# GARDEN NOVELTIES

Complete catalog offering Trees, Shrubs, Roses and a general list of Perennials on request

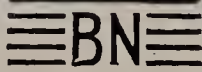


New Korean Hybrid Chrysanthemums in our Formal Garden. Photographed October 20, 1933

## BRISTOL NURSERIES INC.



1934

BRISTOL  CONN

---

# HARDY CHRYSANTHEMUMS

Among all of the late-flowering garden subjects, Chrysanthemums are unquestionably favorites; each season they meet with an increasing demand. The majority of kinds are reasonably hardy; none are altogether so under all garden conditions. Earliness in flowering is the important trait. We confine our list as far as possible to kinds that will flower before severe frosts occur, or to those that are of sufficient substance to resist ordinary freezes while in flower. All are reasonably hardy unless planted in improperly drained soil.

We grow, each season, several thousand seedling Chrysanthemums from carefully selected, cross-bred parents, hoping to secure new kinds that are not only more vigorous, but are sufficiently early to make a good display before severe frost occurs. This is particularly important for New England varieties. Many promising kinds are now on trial, and we cordially invite Chrysanthemum lovers to inspect these seedlings any time during the flowering season, which extends from late September until frost.

**CULTURE.** A reasonably rich soil, such as would grow good vegetables, will be suitable. Plants should be spaced not less than 12 inches apart and planted in groups of three or more; mass effect is more pleasing. An occasional but copious watering during dry periods will produce excellent Chrysanthemums.

**WINTER COVERING.** Avoid too heavy covering or a covering that packs. Cut the tops back in early December, leaving 6-inch stubs. The tops can be used to cover the crowns, adding loose leaves or strawy manure. Do not uncover too early in the spring.

The flowering dates given are the average for the last two seasons and should prove reasonably accurate.

The **NEW KOREAN HYBRIDS** respond to same culture as advised above, but being more branchy can be spaced 3 to 6 inches wider, and as they retain to some extent the strong stooling habit of the Coreanum parent, they can be divided and increased each season. Being hardier, they do not require so much care in winter protection.

Frost-resistance in the flower should not be confused with plant-hardiness. The majority of varieties will resist light frosts. Few Chrysanthemums that attain full bloom in October will resist a killing frost, particularly if in exposed locations. In stressing the hardiness of these hybrids, we do not wish to imply that the flowers are more frost-resistant than the average Chrysanthemum.

**IMPORTANT NOTE.** If garden space is at a premium during the summer months, grow your plants wherever space is available; then transplant with a good ball of soil to the garden in mid-September and water thoroughly. Your Chrysanthemums will flower perfectly without showing any perceptible check.

## Instructions for Ordering

**ORDER AS EARLY AS POSSIBLE.** This will save time in the event that correspondence is necessary. Invariably certain items sell out rapidly each season. Early ordering will assist us in getting your complete order to you at the desired time.

**SUBSTITUTIONS.** We do not substitute without permission; consequently, orders are apt to be shipped incomplete due to certain varieties selling out during the rush of the season. Your permission to send the variety nearest in color may expedite your shipment. If we have your permission, we will supply a variety of equal or better value.

**QUANTITIES.** Please note that 3 plants or more of one variety may be ordered at the dozen rate; 25 or more of one variety at the 100 rate.

**SHIPMENTS.** Shipments go forward at the purchaser's expense. We make no charge for boxing, packing, or delivering to the carrier. Please refer to Parcel Post charges on the Order Blank and other instructions on inside front cover.

**CHARGE ACCOUNTS.** Customers who order from time to time throughout the season may find it more convenient to establish a charge account. We will be very glad to do this if you will forward satisfactory credit references.

**C. O. D.** If goods are wanted C. O. D., please include 25 per cent of the amount of the order. The post office does not permit examination of C. O. D. packages.

**IMPORTANT NOTE.**—Please refer to back of Order Blank for table of prices.

---



*Korean Hybrid* "MERCURY" Plant Patent  
No. 58

Messenger of the Gods, forerunner of this charming new race of Chrysanthemums.  
(Other varieties of this new type illustrated on page 5)

# KOREA



## Land of Enchantment

Known the world over for its hardy native flora, Korea has given us, among other contributions, *Chrysanthemum coreanum*, a species that has proved of great value to us for breeding purposes because of its *iron-clad hardiness*.

From this sturdy native of Korea we have developed a new race of hybrids, a *distinct type* that adds *new color, new interest, and new hardiness* which we believe will make it possible to grow Chrysanthemums in sections where winter-killing has been a serious objection.

Briefly, these new creations are better than the older type because they are *hardier, more attractive and branching in growth, and ever so much easier to grow*. The lovely *new pastel shades*, which simply defy accurate description or true color reproduction, suggest the Gerbera in their daintiness. Cut with short stems, they make the *most charming table or miniature decorations*, yet are capable of striking *decorative uses if the entire branching sprays are used*. They will prove *valuable for artistic cut-flower uses and altogether compelling for color effect in the garden*.



**Mercury.** Plant Patent No. 58. Distributed in a limited way last season, Mercury met with universal appeal. The nicely formed, 3-inch, single flowers open bronze-red and change to coppery bronze as they mature, a charming effect in the garden. These graceful sprays when cut keep exceptionally well, lasting two to three weeks. Height, 2 feet. September 30. Seedling No. 12-31KC.

**Daphne.** Altogether a new shade of pink to the Chrysanthemum. It is an exquisite blending of Daphne-pink, with an underlying sheen of lilac-rose, enhanced with prominent golden stamens in the center. The single flowers, 3½ inches in diameter, carried in graceful sprays, are especially frost-resistant. Fine, healthy-growing habit. Height, 2 to 2½ feet. October 12. Seedling No. 28-31KC.

**Ceres.** A lovely combination of old-gold, chamois-yellow, and soft coppery bronze. The mature flower petals appear as if dusted with gold. Handsome, sturdy plant producing a quantity of nicely formed, single flowers in branching sprays. A beautiful bit of color for the fall garden. Height, 2 to 2½ feet. October 10. Seedling No. 8-31KC.

**Apollo.** Superb autumn color—a sparkling combination of bronze, red, and gold suffused with glowing salmon. The single flowers, 2 inches across, are produced in immense sprays. It has an exceptionally long flowering period due to its excellent texture, which resists frost well. Height, 2½ feet. October 12. Seedling No. 32-32CK.

**Diana.** A new color-note for the garden. Chatenay-rose-pink, mingled with lilac-rose and soft salmon, the tones of which vary with the degree of light. The triple rays of petals give an appearance of fullness that is none the less dainty. Height, 2 feet. October 12. Seedling No. 23-31KC.

**Mars.** For those who prefer depth and brilliancy of color in the garden. Deep amaranth-red, changing to wine-red, overlaid with a velvety sheen. A distinct and striking color effect. Height, 2 to 2½ feet. October 15. Seedling No. 33-32KC.

Growing plants from pots, 75 cts. each, \$7.50 per doz. (3 or more of one variety must be ordered to secure this rate); one each of the 6 varieties, \$4; three each of the 6 varieties, \$11.50.

Delivered free east of the Rockies. For points beyond please add 15 per cent for special packing and transportation.

# KOREAN HYBRID CHRYSANTHEMUMS

①

*Another BRISTOL Contribution to the American Garden*



## KOREAN HYBRIDS—*Aristocrats of the Fall Garden*

1. Apollo. 2. Diana. 3. Ceres. 4. Mars. 5. Mercury. 6. Daphne.

A planting of these gorgeous flowers will add new color, new interest, new delight to your garden. By all means order immediately. Be assured of having a most charming autumn garden display.

### SPECIAL OFFER

One each of 6 varieties, \$4.00  
Three each of 6 varieties, \$11.50

## *Bristol's New Hardy Chrysanthemums for 1934*

### GRANNY SCOVILL (14-31)

A Chrysanthemum that will appeal to the connoisseur. It is a lovely, large flower, fully 4½ inches across, and of nice, fluffy form. The color, a warm coral-bronze, fairly glows under artificial light. In growth it is dwarf and branching, with fine healthy foliage. While a trifle less hardy than the average Chrysanthemum, it is sufficiently outstanding in other respects to merit additional winter care. That is the verdict of hundreds of visitors who saw it in our trial-grounds this season. In full bloom October 10. Height, 2 feet.



Granny Scovill. For the connoisseur

Price of varieties on this page: Pot-plants,  
50 cts. each, \$5 per doz. Field plants, 75 cts.  
each, \$7.50 per doz.

### INNOCENCE (26-32 CK)

An effective, dwarf-growing hybrid of the Korean Chrysanthemum that will prove extremely useful for massing, bordering, or grouping in the rockery. It seldom exceeds 18 inches in height, spreads about 2 feet, and is so completely covered with flowers that the plant is obscured when in bloom. The flowers are single, 2½ inches across, pure white on opening, changing later to an attractive soft pink.



Innocence. For rockery or bordering

### CAVALIER (4-32)

This dazzling single Chrysanthemum will prove a most desirable addition. The color is a rich vermilion-red that does not fade. A free-flowering beauty of fine, robust, branching habit, it makes a gorgeous showing in the garden from October 15 on. Height, 2½ feet.



Cavalier. A free-flowering beauty





Korean Hybrid Chrysanthemums. Photographed October 20, 1933. A veritable Persian Carpet in coloring

## Crimson Splendor

*Bristol Nurseries, Inc., 1933*

A magnificent and distinct variety producing masses of rich crimson-maroon flowers, intensified with deep garnet tones, and contrasting with a prominent golden yellow center. The flowers are large, fully 4 inches in diameter, with exceptional keeping qualities. Blooms in late September, fully two weeks earlier than Dazzler or Mrs. Calvin Coolidge.

## Jean Treadway

*Bristol Nurseries, Inc., 1933*

The flower is large—fully 3 inches across—of perfect Decorative or Aster formation, with excellent substance. On opening, the color is a lovely sparkling pink with a dark rose-



Crimson Splendor. A grand early crimson

pink center, but when fully open it becomes a nice soft lilac-pink shading to white. Of medium height, bushy in growth, and very free. In full flower September 30.

## Grenadier

*Bristol Nurseries, Inc., 1933*

An extremely free-flowering variety of good, sturdy growing habit, producing masses of large, single flowers 3 to 3½ inches across in clusters. The color is a bright crimson-red with an underlying sheen of bronze which is more pronounced as the flowers mature. A golden tint on the petal reverse, combined with the prominent golden yellow center, completes a gorgeous color combination. In full flower in early October.

Pot plants of above 3 varieties, 35 cts. each, \$3.50 per doz., \$25 per 100. Field plants, 50 cts. each, \$5 per doz.



Jean Treadway. Distinct and charming

# Chrysanthemums of Recent Introduction



Daybreak. Earlier than Seashell—just as attractive



Vivid. A striking bit of color



Jean Cumming. The best pure white

## Daybreak

*Bristol Nurseries, Inc., 1932*

Virtually a duplicate of the lovely and popular Seashell. Daybreak will flower with us about October 10, two weeks before Seashell, and can be depended on for a fine display each season. The flower is of single type, almost 3 inches across, soft shell-pink in color, and has a noticeable sweet fragrance. Splendid variety for cutting or garden display. Strong and free growing. Height, 2 feet.

## Jean Cumming

*Bristol Nurseries, Inc., 1931*

This variety is regarded as a very great improvement on older white varieties. Large flowers of purest white, with the softest yellow and blush shading at the center of the buds. Growth erect and wiry; height medium. Commences flowering about September 15, and having exceptional keeping qualities, is undoubtedly the best white variety to date.

## Vivid

*Bristol Nurseries, Inc., 1932*

A very striking and effective variety, the color of which very closely approaches that of the American Beauty rose—a rosy crimson or amaranth shade new to the earlier flowering Chrysanthemums. Flowering about October 1, it is extremely vigorous and very free.

Pot plants of above 3 varieties, 25 cts. each, \$2.50 per doz., \$15 per 100. Field plants, 35 cts. each, \$3.50 per doz., \$25 per 100.

# Chrysanthemums of Recent Introduction



Frances Whittlesey. Resistant to frost when in bloom; very popular



October Dawn. Dainty as a cut-flower

## Frances Whittlesey

*Bristol Nurseries, Inc., 1931*

A very decided improvement in this particular color. Habit is stocky and dwarf, averaging 18 inches in height. Color, rich bronze and garnet—just right for the fall garden. It commences to flower in late September and makes a gorgeous showing through October, having the ability to resist considerable frost in the open flowers.

## October Dawn

*Bristol Nurseries, Inc., 1931*

Lovely shade of soft daybreak-pink, entirely free from contrasting tints. This variety will greatly appeal to those who appreciate the more delicate color-effects. The flowers are of good size, full-petaled, and of nice Decorative type. In growing habit it is of medium height, but well branched, bushy, and very free and effective in the garden or as a cut-flower. Commences flowering about October 5.

## R. Marion Hatton

*Bristol Nurseries, Inc., 1931*

For mass color-effect in the garden we know of no variety comparable to this yellow. The flower is of the Decorative Pompon type, not large or impressive in itself, but in addition to exceptional freedom in blooming, it is one of the earliest to flower, and certainly the brightest canary-yellow available, flowering from late September on. It is remarkably resistant to frost.

Pot plants of above 3 varieties, 25 cts. each, \$2.50 per doz., \$15 per 100. Field plants, 35 cts. each, \$3.50 per doz., \$25 per 100.



R. Marion Hatton. Effective in masses

# Chrysanthemums of Recent Introduction



Ruth Hatton. Very prolific and showy



Barbara Cumming. One of the earliest

## Ruth Hatton

*Bristol Nurseries, Inc., 1929*

An exceptionally prolific variety of vigorous and bushy growth. This Decorative Pompon type when fully opened is clear ivory-white; when partially open, a delicate shade of lemon-yellow. Resists light frosts and is normally in full flower about October 10.

## Barbara Cumming

*Bristol Nurseries, Inc., 1928*

Very attractive, large, full flower of the Decorative type, over 3 inches across, and clear yellow in color, shading to orange-bronze toward the center. It commences flowering in late August and continues until late October. Vigorous and branchy, attaining 2 feet.

## October Girl

*Bristol Nurseries, Inc., 1929*

This most prolific flowering variety is of vigorous and branchy habit. The flowers are single or semi-double, fully 2 inches across, pink on opening, becoming shaded with lavender when fully opened. In full flower by October 1.

## Gypsy Girl

*Bristol Nurseries, Inc., 1928*

A garden variety of the single type, crimson in color, shading to chestnut-crimson. It commences blooming in early October, resisting early frosts, and it flowers well into November.

Pot plants of above 4 varieties, 25 cts. each, \$2.50 per doz., \$15 per 100. Field plants, 35 cts. each, \$3.50 per doz., \$25 per 100.



October Girl. Vigorous in growth and early

# Outstanding Mums from Other Introducers

All Chrysanthemums on this page, unless otherwise noted: Pot plants, 25 cts. each, \$2.50 per doz., \$18 per 100. Field plants, 35 cts. each, \$3.50 per doz., \$25 per 100.

## Button or Pompon Type

**ADELAIDE.** Beautiful, rich mahogany blooms of fine form in early October.

**BRIGHT EYES.** A miniature blush-white flower of tidy habit. October 10.

**EARLY BRONZE.** Extremely early variety which came to us under this name, although its true identity is in doubt. Flowers freely from late August on. Color is a lively bronze-yellow.

**ETHEL.** A splendid bright red miniature Pompon. October 10.

**EXCELSIOR.** Bright yellow. Strong grower. Flowers freely in mid-October.

**HARVEST MOON.** Pure golden yellow. Dwarf, bushy habit. Early October.

**IRENE.** Pure white. Neat, compact habit. Early October.

**LILIAN DOTY.** Clear light pink. Large Pompon. October 10.

**BROWN BESS.** Small, button-like flowers of bright red. Blooms about mid-October.

**METZI.** Very small yellow flowers, with deeper center. Mid-October.

**MRS. L. BIRCHARD.** Flowers are large, clean cut, and of a splendid shade of bright shell-pink. Very free. October 10.

**SILVER BALL.** Large, silver-white Pompon. October 10. Pot plants only.

**SKIBO.** Medium size; pure yellow. Mid-October.

**YELLOW GEM.** (Bristol Nurseries, Inc., 1932.) Very neat and attractive. The color is a bright canary-yellow without shading. Growth is wiry and compact. Height, 1½ feet. Early October. Splendid for cutting.

## Decorative Type

**AMELIA.** Dwarf, compact, cushion-like growth; flowering freely from late September on and varying from light to deeper pink. Apparently identical to Pink Cushion and the Azaleamum. In any case, it is very useful for color mass in the garden. Pot plants only, 35 cts. each, \$3.50 per doz.

**JACK BANNISTER.** Very good light yellow, flowering in early October.

**L'ARGENTUILLAIS.** A showy, full flower of vivid red, with distinct gold markings at the petal tips. October 10.

**MADUSE.** Large, terra-cotta-bronze flower. Medium growth. Early October.

**MRS. PHIL PAGE.** Bronze, at times deepening to bronzy red. Flowers are large and produced over a long period. One of the earliest. Very similar to Aladdin. Pot plants only, 35 cts. each, \$3.50 per doz.

**MRS. J. WILLIS MARTIN.** The color is a blending of crimson and crushed strawberry, altogether distinct. October 10.

**NORMANDIE.** Opens creamy white; delicate pink when mature. Early and good. Medium growth. Late September.



Ruth Cumming. An old favorite

## DECORATIVE TYPE, continued

**PROVENCE.** Soft pink, blended with yellow. Compact in growth; very free. First-rate in every way. October 1.

**RUTH CUMMING.** The color is rich reddish bronze with terra-cotta shades, aging to an even, soft bronze tone. October 10.

**SEPTEMBER QUEEN.** An excellent, early, pure white variety flowering about mid-September. Large flowers, 3½ inches across. Height, 1½ feet.

**YELLOW NORMANDIE.** Light bronzy yellow, of the same good habits as Normandie, flowering freely from early October. Nice for cutting.

## Single Type

**ALICE HOWELL.** Large, single flowers of a rich bronzy orange-yellow shade. Very free flowering and will appeal to those who like the dainty charm of this type. October 5.

**DAZZLER.** Brilliant cardinal-red. Fine growing habit. Should have a protected location owing to lateness. October 10.

**DONALD WELLS.** The earliest and most desirable white-flowering variety. Early September until hard frost.

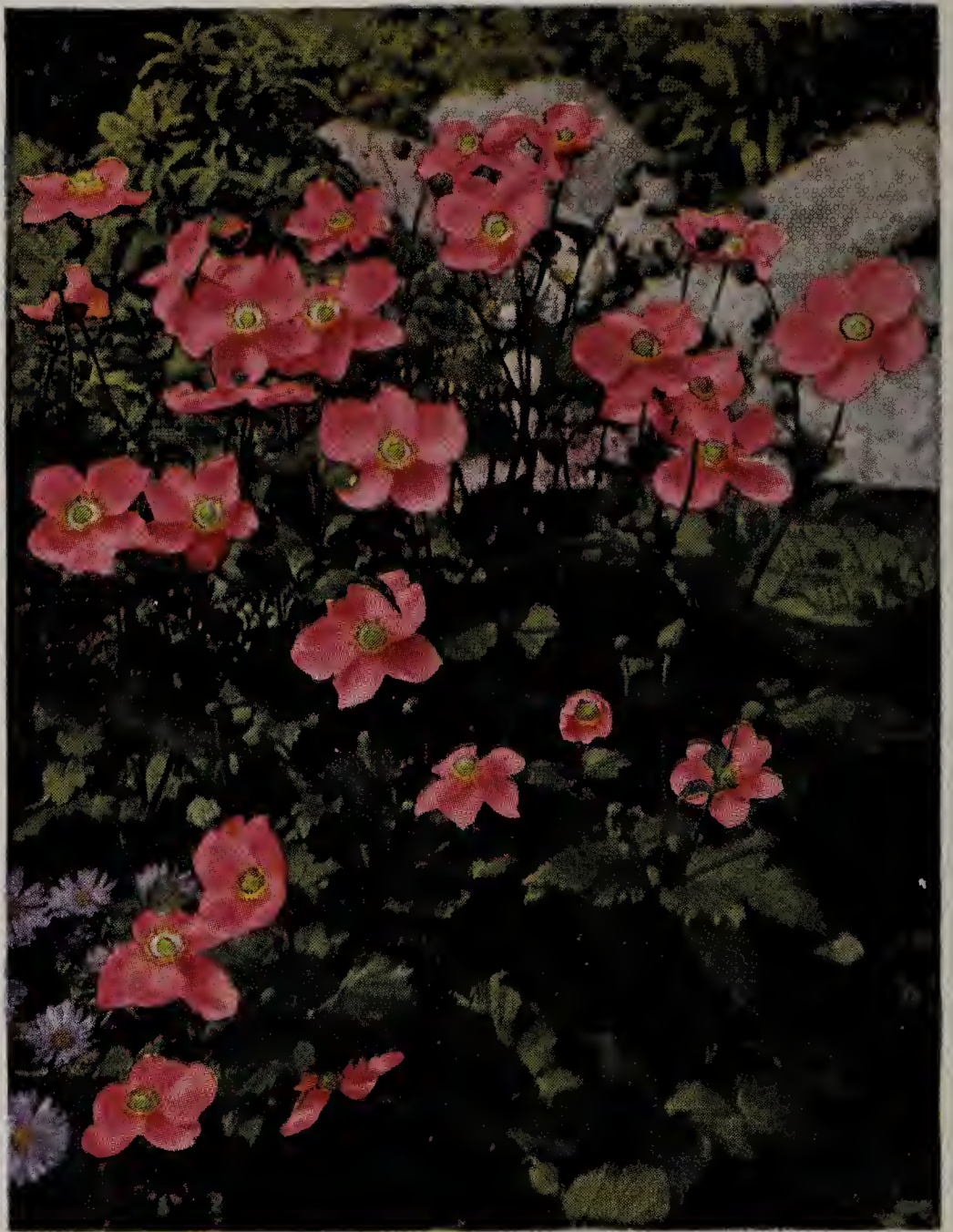
**MRS. CALVIN COOLIDGE.** Fine example of the single type. A rich cardinal-red. October 15.

## Anemones

These lovely fall-blooming Anemones are somewhat difficult to establish and are worthy of some special attention in their culture. Anemones dislike an exposed, wind-blown location, extreme heat, and clay soil. A mellow garden soil to which leaf-mold and thoroughly decayed barnyard manure has been added is best. A background of evergreens or a wall is also desirable. Growing plants from pots planted in May or early June will give good results. Winter covering of leaves and evergreen branches should be applied in late November. Do not uncover too early, and if a few little evergreen branches can remain over the plants until mid-May it will prevent spring freezing. New growths may not appear until mid-June, so care should be taken to leave them undisturbed until that time.

**SEPTEMBER CHARM.** (Bristol Nurseries, Inc., 1932.) A very lovely addition that will prove valuable because it is in full flower by September 20, early enough to escape the injurious frosts of New England. The individual flower is of medium size, 2 inches or more in diameter. The color is a delicate silvery pink, shaded with rose and mauve, presenting a beautiful color mass when grouped. Extremely free and attains an average height of 2 feet. September Charm is the progeny of *Hupehensis* crossed with Japonica, Queen Charlotte, combining earliness and freedom of the first parent with the fine color and larger flower of the Japonica type.

**SEPTEMBER QUEEN.** (Bristol Nurseries, Inc., 1933.) A desirable semi-double variety that will appeal immensely to those who like the old favorites, Rubra or Prince Henry. It is an improvement on both, being earlier, more erect in habit, and ever so much more free in flowering. The color is an attractive shade of rosy red. In full flower September 15. It supplies an effective bit of color when it is needed. One of the best for cutting.



Anemone, September Charm. Early enough to escape frost

**SEPTEMBER SPRITE.** (Bristol Nurseries, Inc., 1933.) A miniature Anemone producing myriads of single flowers resembling *Hupehensis* in form, but smaller and more dainty. Due to its neat, compact habit and extreme freedom, it will be very useful in the garden or rockery if planted closely in group effect, three or more plants to a cluster. In color it is a pretty blending of soft pink and rosy mauve. Flowering in early September, it will prove a charming addition to this group.

Above 3 Anemones, 35 cts. each, \$3.50 per doz.



Stokesia, *Lævis lilacina grandiflora*. Exceptionally large flowers

## Phlox, Salmon Glow

Jules Sandeau × Elizabeth Campbell

*Bristol Nurseries, Inc., 1932*

Lively flame-pink, with salmon shades, softened with lilac and white tints at the center, the effect as a whole being a rich salmon. This new variety is not only extremely free but, like its parent Jules Sandeau, it improves with age. Three- and four-year-old plants produce perfectly huge trusses from early July throughout the season. 35 cts. each, \$3.50 per doz. Extra-heavy plants, 50 cts. each, \$5 per doz.

## Stokesia, *Lævis lilacina grandiflora*

Quite distinct from the well-known *S. cyanea*. The color is a very attractive shade of silvery blue with a lilac-blue suffusion at the center. Flowers are very large, often 5 inches across, and can readily be cut with stems 18 to 20 inches in length. Flowers freely and is a very useful all-purpose plant. 35 cts. each, \$3.50 per doz.

## Hardy Asters (Michaelmas Daisies) New or Choice Kinds

These are improved forms of our beautiful wild Asters, flowering so profusely throughout New England in late summer and fall. Those marked "N.A." are of the Novæ-angliæ type and are tall and erect in habit; "N.B.," the Novi-belgi type, are more profuse in branching and flowering. Either is of great value for grouping in garden background or for naturalizing, and each season a better appreciation is shown of this splendid native flower. They are entirely distinct from the annual China Aster, with which they are sometimes confused.

**FRIKARTI** (Wonder of Staefa). Large flowers of a wisteria-violet shade with large yellow centers. This Aster has a longer blooming period than any other variety, flowering from late August to frost. Excellent for cutting. Height, 2 to 2½ feet. Pot-plants, 35 cts. each, \$3.50 per doz.

**BARR'S PINK**. N.A. Undoubtedly the best Aster of this type so far introduced. Strong-growing, shapely plant 5 feet in height and flowering profusely from early September on. Individual flowers are large, pure bright pink in color, and carried on rigid, branching stems.

**ETHEL BALLARD**. N.B. A splendid new variety carrying quantities of soft pink flowers on upright, pyramidal branches. The entire plant is completely covered with blossoms from early September until mid-October. Height, 2½ to 3 feet.

**HYBRIDUS LUTEUS**. This Aster resembles a glorified goldenrod in its flowering habit. During late August and early September it is a gorgeous mass of small golden yellow flowers, produced in long, densely covered sprays of exceptional value for cutting. Height, 2½ feet.

**MAID OF ATHENS**. N.B. A vigorous, branching beauty, completely covered with large, single flowers of a glorious shade of rose-pink in late September and early October. Height, 3½ feet. Best pink Hardy Aster. 25 cts. each, \$2.50 per doz.

**QUEEN MARY**. N.B. Very large individual flowers averaging 2½ inches across, rich, glistening, brilliant blue in color. Flowers carried in loosely conical trusses form an attractive, shapely, compact plant. Height, 3 feet. Flowers in late September. 25 cts. each, \$2.50 per doz.

**ROYAL PINK**. N.B. Compact-growing plant carrying a profusion of soft pink flowers during September and early October. Extremely effective in the garden. Height, 2½ to 3 feet.

**SKYLAND'S QUEEN**. Flowers are large, an attractive shade of light blue, completely covering the plant, which is dense and spreading in habit. Very effective from late August on; splendid for cutting. Height, 2½ feet.

**YPRES**. N.B. Attractive rosy red flowers and neat, compact growth. Very fine. Height, 2 to 3 feet. September and October. 35 cts. each, \$3.50 per doz.

All Asters, 30 cts. each, \$3 per doz., unless otherwise noted

### Gaillardia, Sun God Seedling No. 2-29

PORTOLA × GOLDEN GLEAM

*Bristol Nurseries, Inc., 1934*

Among hardy garden favorites the Gaillardia undoubtedly has a longer period of bloom and general usefulness than any other. In offering Sun God for the first time we believe we are making an addition that will be regarded as a real advance. In color it is pure golden yellow absolutely free from marking of any kind. The flower is very large—almost 4 inches across—and the prominent golden yellow center gives it a massive appearance. Its petals are broad and overlapping, not unlike Portola but much larger. The gorgeous flowers are produced on rigid, wiry, clean-cut stems often 2 feet or more in height. It is a free-flowering, handsome plant that will prove an acquisition to the garden and a grand cut-flower subject. Flowers freely from late June and intermittently throughout the season. 50 cts. each, \$5 per doz. Extra large, 75 cts. each, \$7.50 per doz.



Gaillardia, Sun God. An acquisition to the garden

### Gypsophila · Bristol Fairy · The Popular Baby's Breath

*Bristol Nurseries, Inc., 1927*

This is regarded as one of the outstanding introductions among garden plants of recent years, and has enjoyed a tremendous sale, particularly among professional plantsmen, both here and abroad, where it received the coveted Award of Merit of the Royal Horticultural Society. Briefly described, its double flowers are pure white, fully three times larger than the old Double Baby's Breath, and its growth is more vigorous, established plants averaging 3½ feet in height and 4 to 5 feet across. In all its characteristics it is extremely graceful and dainty. Bristol Fairy has the added fine trait of producing occasional side sprays after the first crop in late June and July, continuing sporadically until severe frost. Good garden soil, enriched with well-decayed barnyard manure, and an open, shade-free location are its chief requirements. Avoid strong chemical fertilizers and wet soil. A light mulch or covering applied to the heavy root-crown over winter is advised, and this covering should not be removed too early in spring. Field roots, 35 cts. each, \$3.50 per doz., \$25 per 100. Extra large, 50 cts. each, \$5 per doz.

"Garden Flowers in Color," 469 desirable flowers pictured in natural color. A grand book. Price \$3.75



Plant for summer color in the garden

## New and Choice Day Lilies

Much interest has been aroused recently by splendid new developments in this lovely lily-like flower. The new varieties have greatly extended the blooming season of the popular old Lemon Lily so that continuous bloom may be secured almost every growing month.

**AJAX.** Large, rich orange flowers carried several to a stem. Not unlike Goldeni, but more compact, attaining a height of 2 feet. Flowering season late June and July.

**ANNA BETSCHER.** A magnificent variety, producing many rich golden yellow flowers of perfect form during late July and August, and growing to a height of 2½ feet. One of the finest Day Lilies.

**BAY STATE.** Very large, glistening, pure yellow flowers carried on tall, stately stems. It commences to flower in July and continues until mid-August.

**GEORGE YELD.** Very large, bronzy apricot flower of excellent texture and fine form, holding its color well under all conditions. Fine healthy foliage is another good characteristic. Height, 2½ to 3 feet. July, August.

**GOLD IMPERIAL.** This is one of the finest of the European introductions. Very large, fragrant, pure golden yellow flowers of perfect form are carried in clusters on erect stems, making an impressive display during late July and throughout August. It grows to a height of 3½ feet and is truly an aristocrat among Day Lilies.

**GOLD STANDARD.** A free-flowering variety carrying an abundance of large, pure canary-yellow flowers during July and August. Height, 2½ feet.

**GOLDENI.** Well named. The many fine, deep golden orange flowers are produced freely in early July. It grows to a height of 3 feet, is quite vigorous in habit, and a most effective garden variety.

**HYBRID SEEDLINGS.** Excellent material for economical grouping, background planting, or for the semi-wild garden. Clear yellow colors and of the Ochroleuca type—tall, erect growth. Extremely

colorful during July and August. Strong clumps, 25 cts. each, \$2.50 per doz., \$15 per 100.

**J. A. CRAWFORD.** One of the finest Day Lilies. The flowers are of splendid size and a brilliant combination of apricot and cadmium-yellow. They are borne on stems averaging 4 feet. July, August.

**LEMONA.** An extremely vigorous, upright-growing variety, attaining a height of 5 feet and producing quantities of flowers of a delightful shade of light or pale lemon-yellow. July, August.

**MARGARET PERRY.** Brilliant orange-scarlet with conspicuous yellow line through each petal; bold yellow base. Height, 3 feet. July, August. 50 cts. each, \$5 per doz.

**MIKADO.** Fine golden yellow, distinctly marked with maroon blotch in the center. Flowers of good size. Height, 3 feet. July. 75 cts. each, \$7.50 per doz.

**MRS. W. H. WYMAN.** This will prove a most valuable addition owing to its extremely late-flowering habit, the blooms appearing in late July and August. They are clear yellow and blend nicely with blue-flowering perennials.

**OCHROLEUCA.** The true variety favored by the landscape architect for its clean, erect habit of growth and clear citron-yellow flowers, which appear in abundance during late July and August. Excellent for background massing. 35 cts. each, \$3.50 per doz.

**YELLOW HAMMER.** Extremely liberal in producing its rich golden yellow flowers throughout late June and July. Its fine, spreading, healthy growing habit makes it an attractive plant throughout the season. Height, 2½ to 3 feet. 75 cts. each, \$7.50 per doz.

All Hemerocallis, \$1 each, \$10 per doz., unless otherwise noted







## Hardy Garden Pinks

**BEATRIX.** Semi-double flowers of an attractive salmon-pink shade. Everblooming and of distinct habit. 35 cts. each, \$3.50 per doz.

**BRISTOL BEAUTY** (Seedling No. 6). (Bristol Nurseries, Inc., 1931.) Very large flowers, almost carnation size, of rich pink color and very fragrant.

**BRISTOL JEWEL.** (Bristol Nurseries, Inc., 1929.) Seldom without bloom from June until frost. Semi-double, nicely formed, fragrant flowers; white prettily flaked crimson, distinct crimson eye. Growth somewhat spreading; cut back after flowering.

**FURST BISMARCK.** A distinct shade of cerise-red. Extremely free and persistent.

**BRISTOL MAID.** (Bristol Nurseries, Inc., 1929.) A very large, double flower of excellent form; rose-pink with a faint lavender shading. Free flowering in June; occasional flowers in late summer. Delightfully clove-scented.

**BRISTOL PURITY.** (Bristol Nurseries, Inc., 1929.) Absolutely pure white, double flowers and very fragrant. Good, compact-growing habit; extremely free, with occasional flowers in fall.

**PLUMARIUS, ANNIE LAURIE.** Single, delicate pink flowers of extraordinary size, produced freely throughout the summer.

All Garden Pinks, 30 cts. each, \$3 per doz., unless noted

## Choice Violas

**Winter Protection.** While all of the Violas offered here are considered hardy, a winter covering will bring the plants through in better flowering condition. This winter covering should not be heavy, but should remain on the plants as late in spring as conditions will permit to prevent late spring injury.

**NEW VIOLA, PURPLE GLORY.** We consider this the greatest improvement in Violas since the introduction of the original Jersey Gem. The color is a very fine shade of purple, better than Jersey Jewel. Flowers are of excellent size, rounded and of splendid substance, insuring good keeping qualities. A tidy growing plant, never out of bloom. An excellent variety for edging and good for the rock garden. 35 cts. each, \$3.50 per doz.

**ROSINA** (*Viola odorata, Rosina*). Pink Hardy Violet. A novelty of unusual interest to the hardy-plant lover, producing not only in spring but again in late autumn, quantities of dainty flowers, deliciously fragrant and of a charming new color—a combination of pink and old-rose shades. The fragrance probably is the most outstanding feature of this new Viola. It is also quite resistant to either sun or dry-weather conditions, and will prove extremely useful for bordering or as a ground-cover in half shade or full sun. Splendid also for the rock-garden.

**JERSEY GEM.** The pure violet-blue flowers are produced very freely on 6-inch stems. It is perfectly at home in full sunshine, flowering profusely in early spring and late summer, and intermittently during midsummer. The finest Viola for American gardens.

**JERSEY JEWEL.** Distinct in color, with a larger flower resembling the pansy in size. The color is a rich violet-blue with heliotrope shadings.

All Violas, 25 cts. each, \$2.50 per doz., \$15 per 100, unless otherwise noted

## Vinca minor, Bowles Variety

We believe this European form is better in every respect than the Periwinkle now so much in demand. The foliage is broader, a rich glossy green of wonderful texture, and the plant is inclined to branch more from the crown, making a dense mass of luxuriant foliage. The flower is a trifle larger and a shade deeper in its rich blue color. These flowers are borne profusely in early spring, also intermittently in autumn, sufficiently to prove attractive until frost. Visitors here at the nursery are quick to note its superiority over the older type. Field plants, 25 cts. each, \$2.50 per doz., \$15 per 100.



Vinca minor, Bowles Variety. Luxuriant foliage and flowers again in autumn



GAILLARDIA, SUN GOD. Seedling No. 2-29

See page 13 for description

50 cts. each, \$5 per doz. Extra-large plants, 75 cts. each, \$7.50 per doz.

**BRISTOL NURSERIES, INC., BRISTOL, CONNECTICUT**