

GHQ/SCAP Records (RG 331, National Archives and Records Service)
 Description of contents

- (1) Box no. 2853
 (2) Folder title/number: (36)
 Child Welfare - Administrative Organization

(3) Date: Dec. 1948 - ?

(4) Subject:

Classification	Type of record
9733, 9760	e, r

(5) Item description and comment:

Kanto

(6) Reproduction: Yes No

(7) Film no.

Sheet no.

(Compiled by National Diet Library)

Gumma -

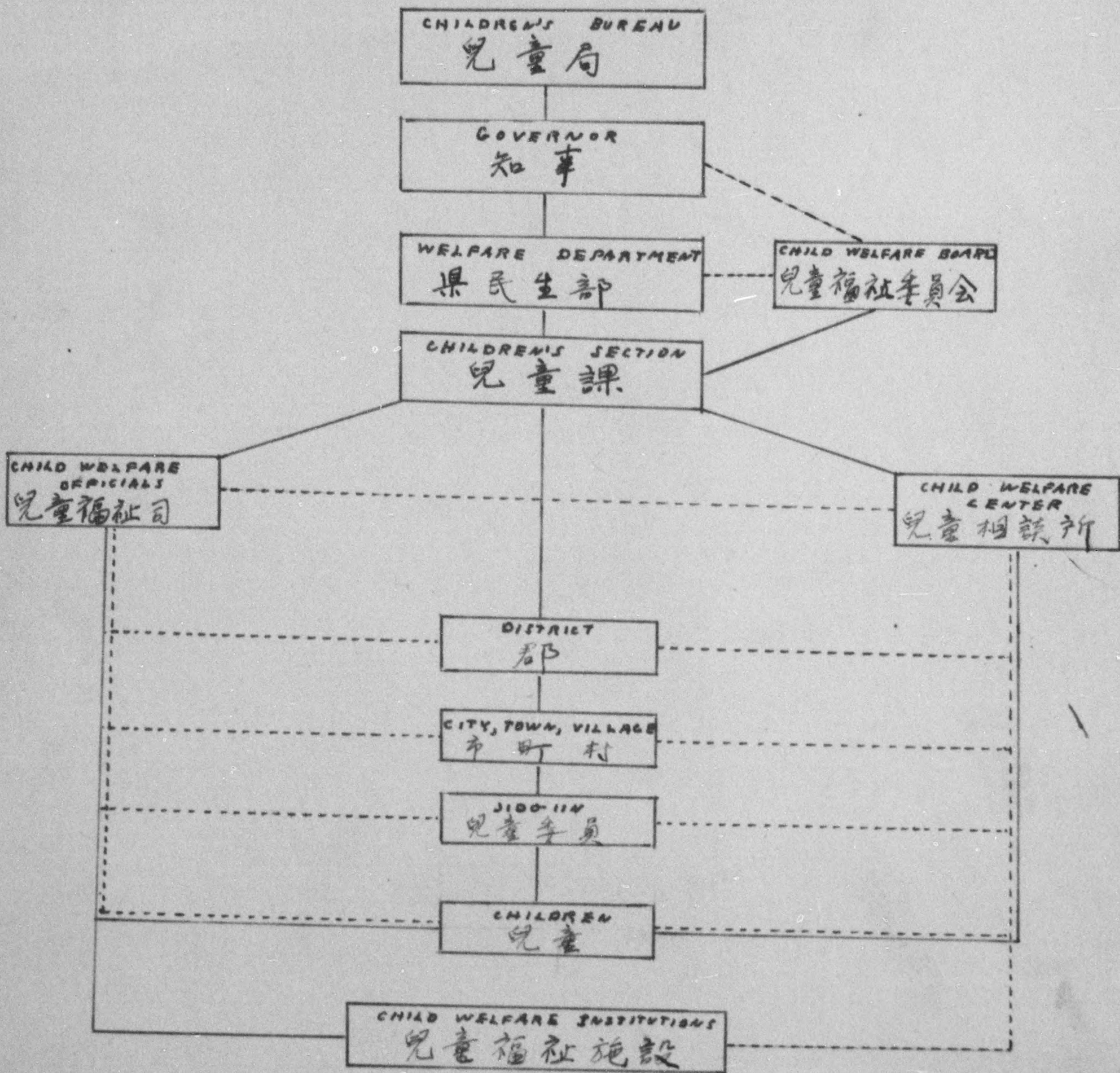
1. could leave out Wel. Dept. & Jea.
 2. Bd. under leadership of Section
- C.W.O. suggested inclusion of Chdn's own homes

Nagano -

- 1 - Leri should go from Chdn. sec to dest. to instab.

Yamanashi - o.k.

ORGANIZATION CHART OF CHILD WELFARE PROGRAM
児童福祉プログラム機構図



2 -

Gumma -

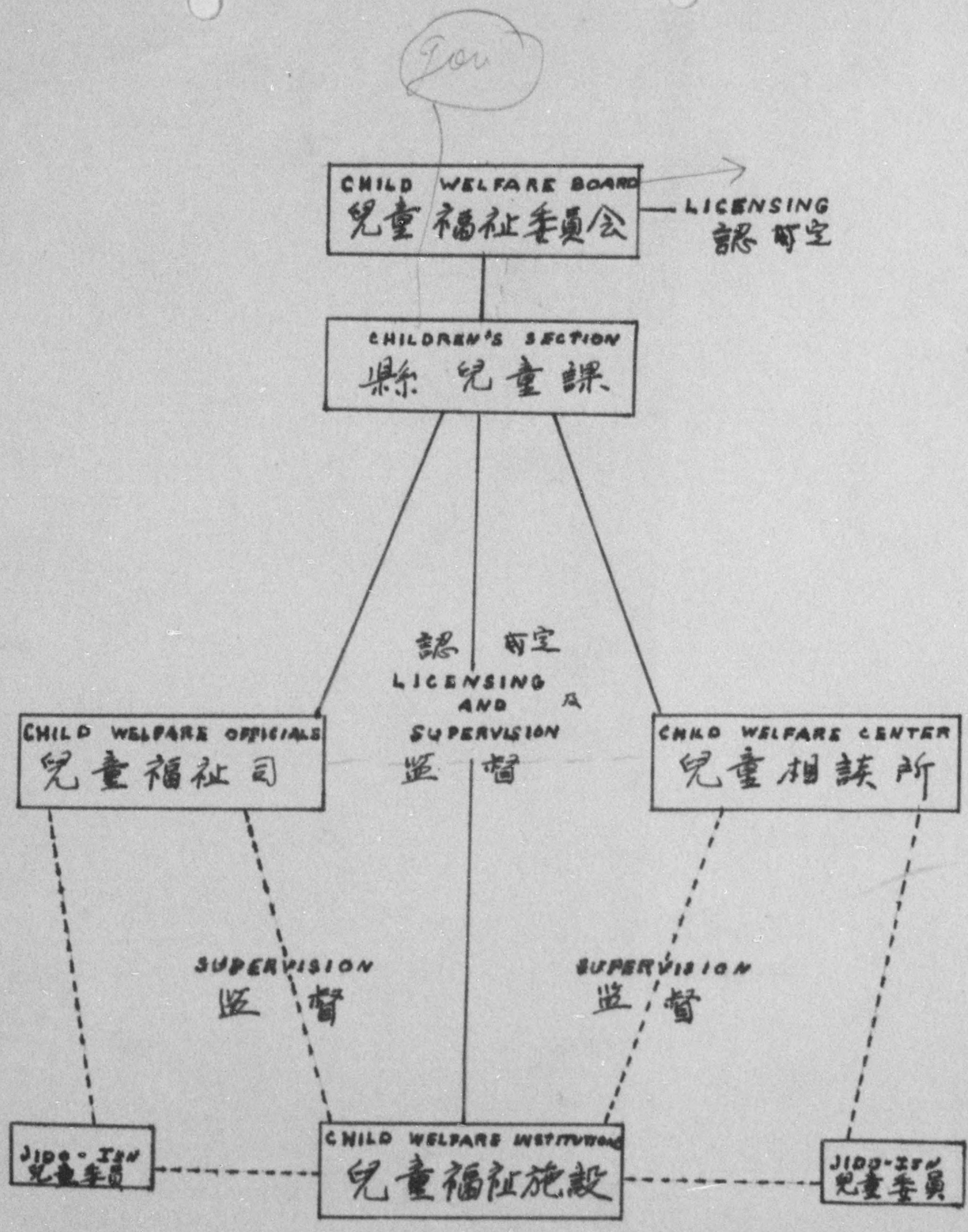
1. Straight line between C.W.O.
& visits.
C.W.O. - same

Nagano

1. Dotted line to Bd.
Straight line to gov.
Dotted line between C.W.O. & C.W.C.

Yamanashi

- 1 - Straight line from Chidno
Dist. to Jido - in



LICENSING AND SUPERVISION OF CHILD WELFARE INSTITUTIONS

兒童福祉施設の認可及監督

3.

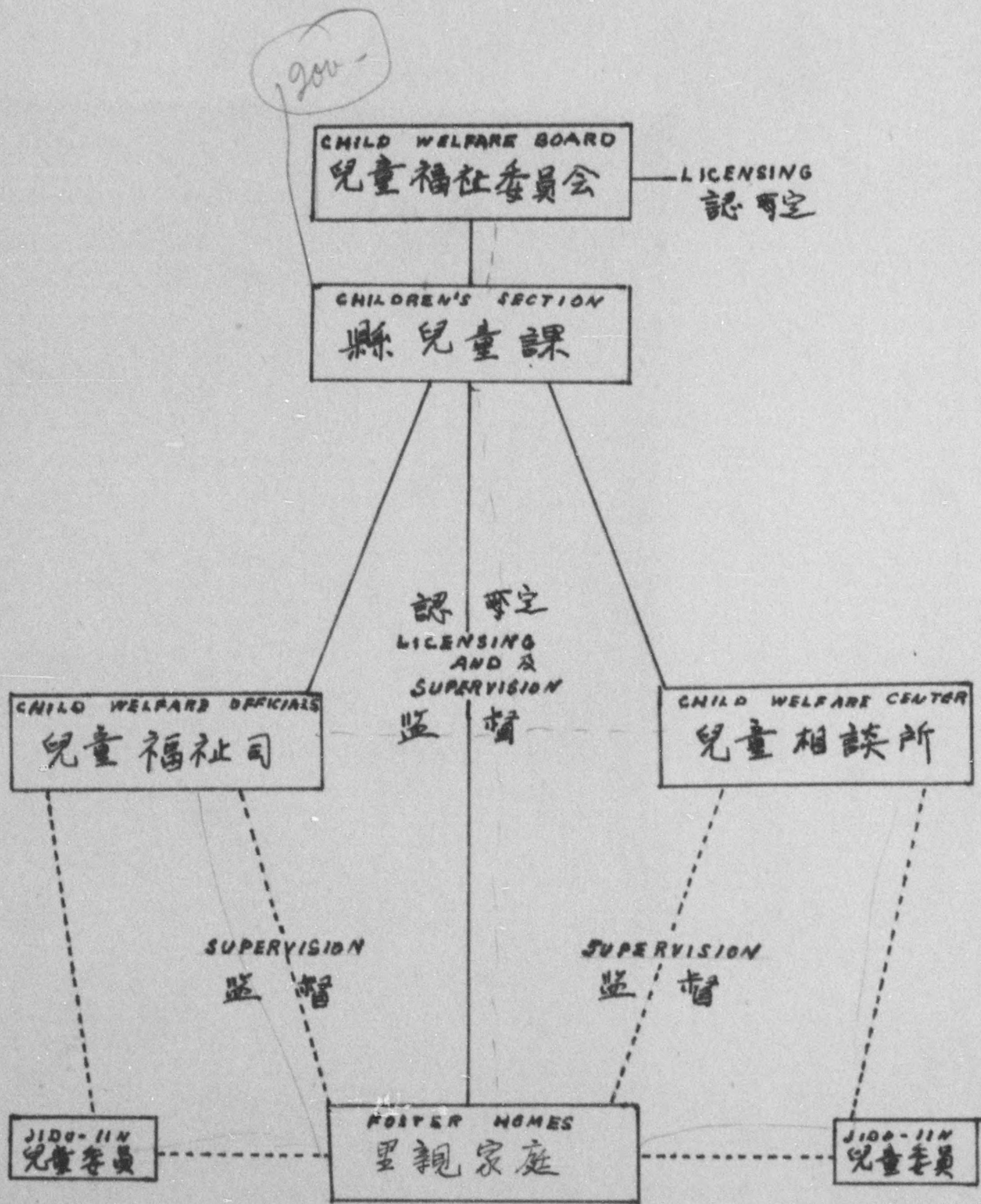
Gumma

1. Jido - in should be in straight line between Mrs's Sub. & foster homes

C.W.O. - might be too early to place Jido - in in straight line

Nagano

1- C.W.C. should be in center after approval C.W.C. decides whether Jido in or C.W.O. should be supervising



LICENSING AND SUPERVISION OF
FOSTER HOMES
里親家庭の認定及監督

4

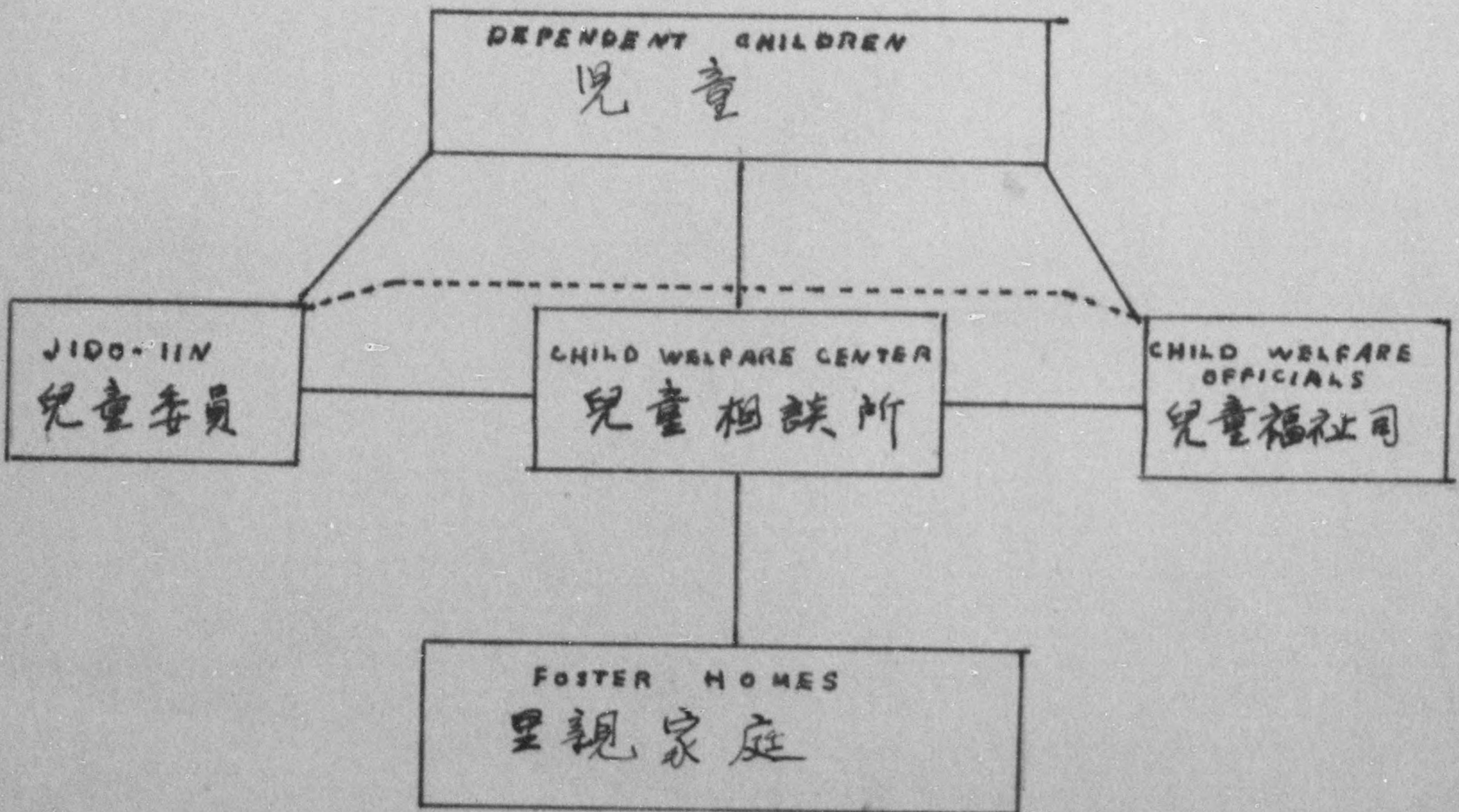
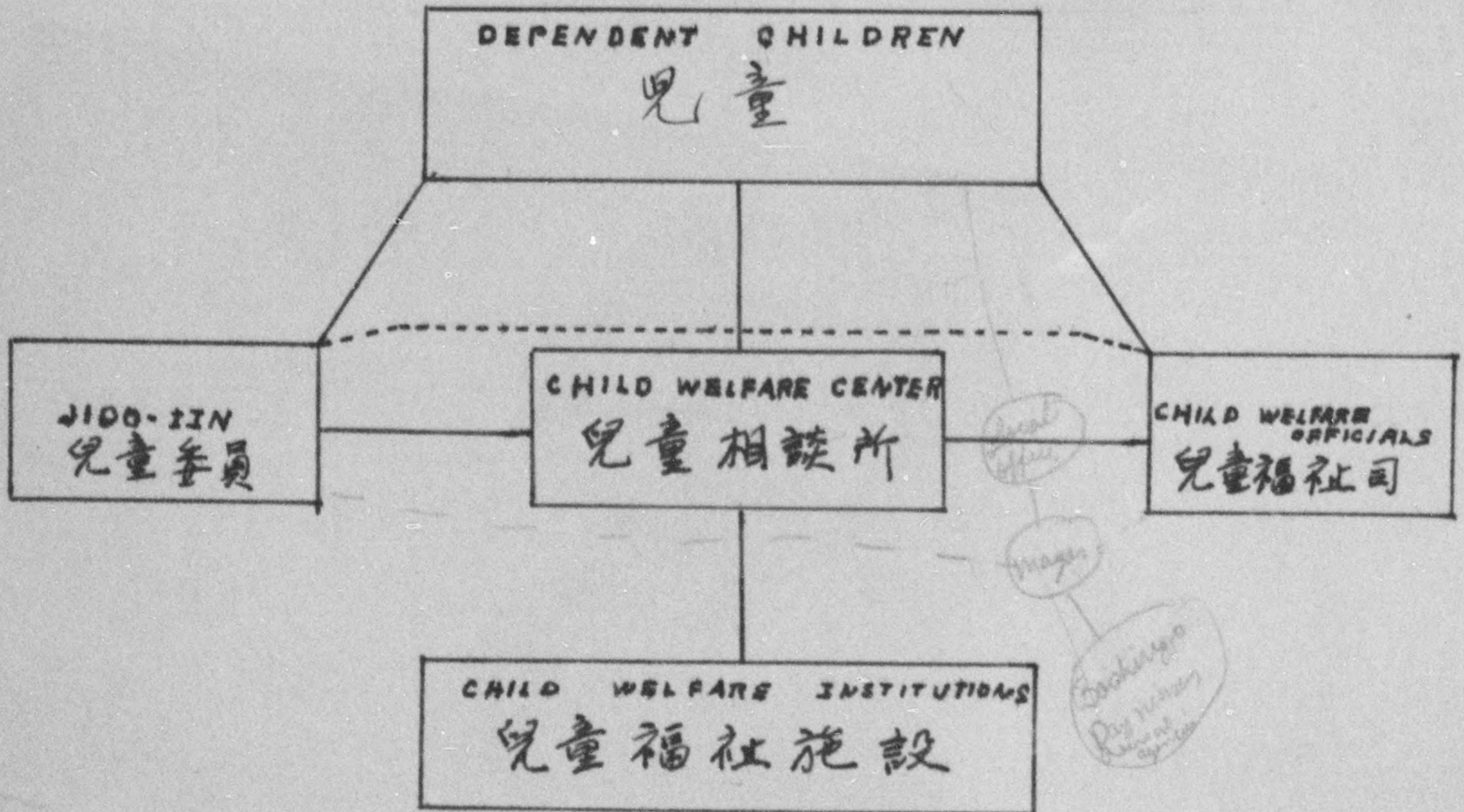
Gemma

only few private placements
c.w.o - line from chdn. to
local office to mayor to 3
specialized instts.

Nagano

Local practice - gov. should come in
straight line between center &
instts - 's center & for homes
all placements go thru center

PLACEMENT IN INSTITUTIONS AND FOSTER HOMES
兒童福祉施設及里親家庭系統



775 013

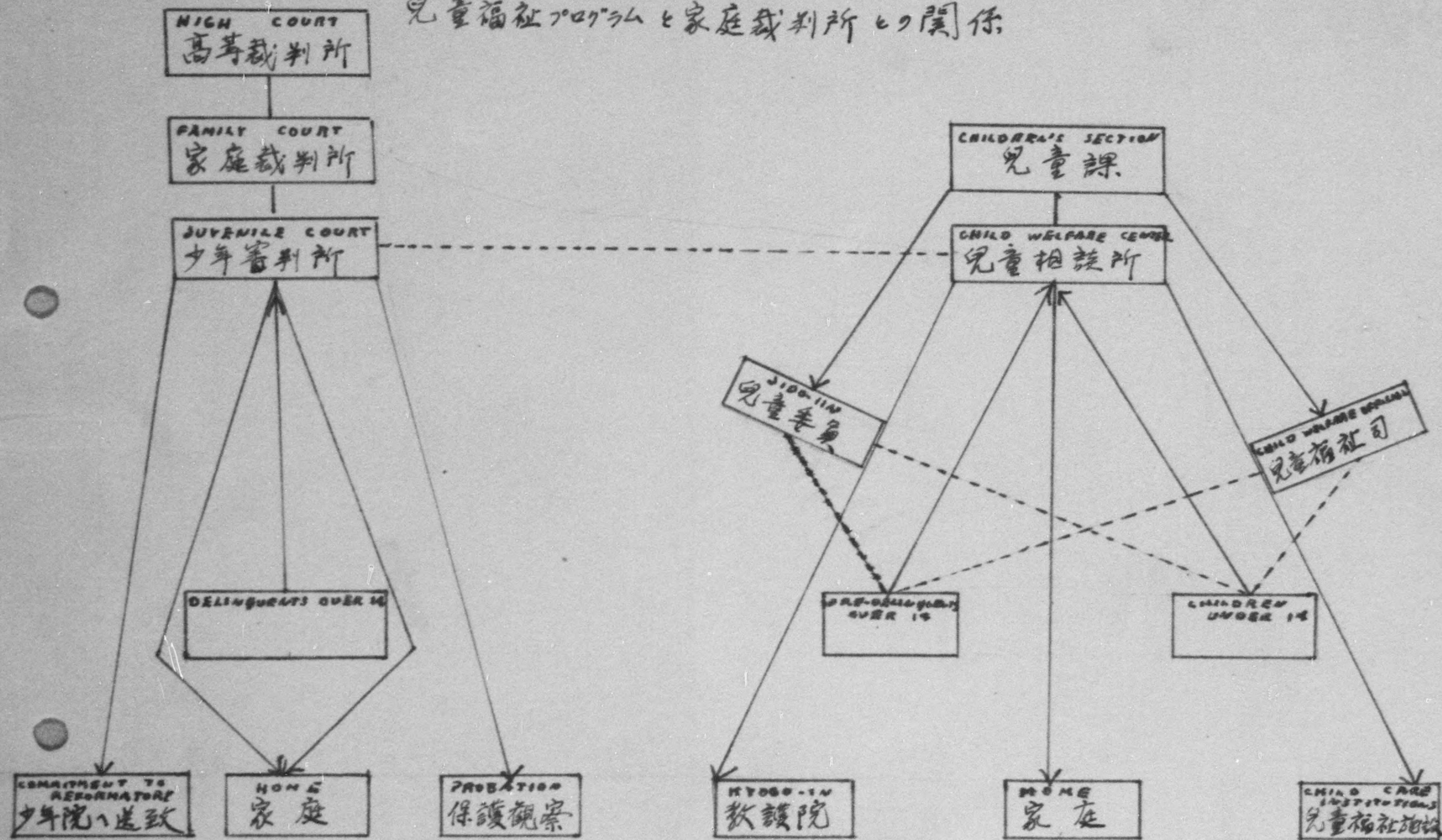
#5-

gamma
needs complete revision

RELATIONSHIP BETWEEN FAMILY COURT

AND CHILD WELFARE PROGRAM

兒童福祉プログラムと家庭裁判所の関係

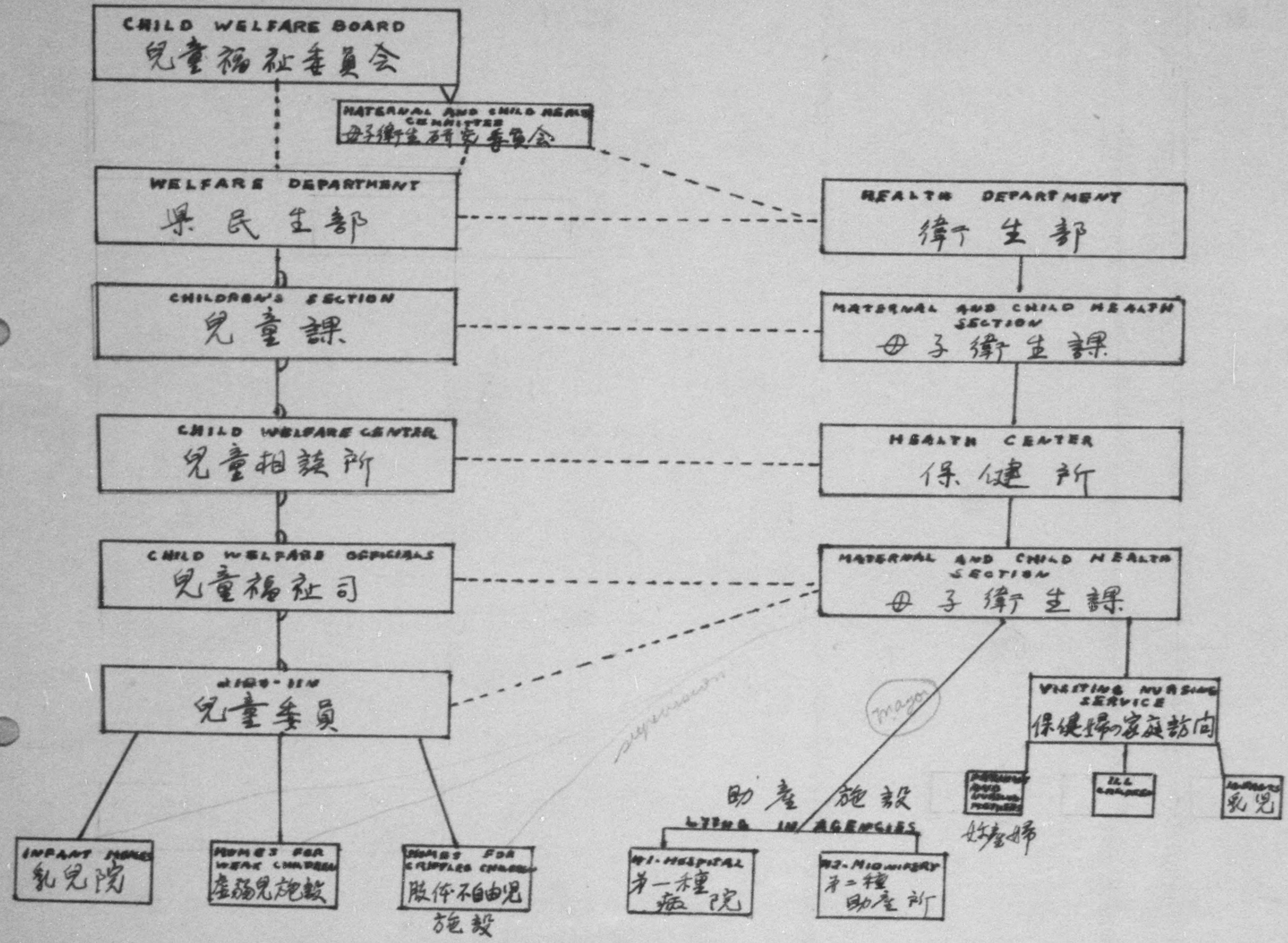


#6

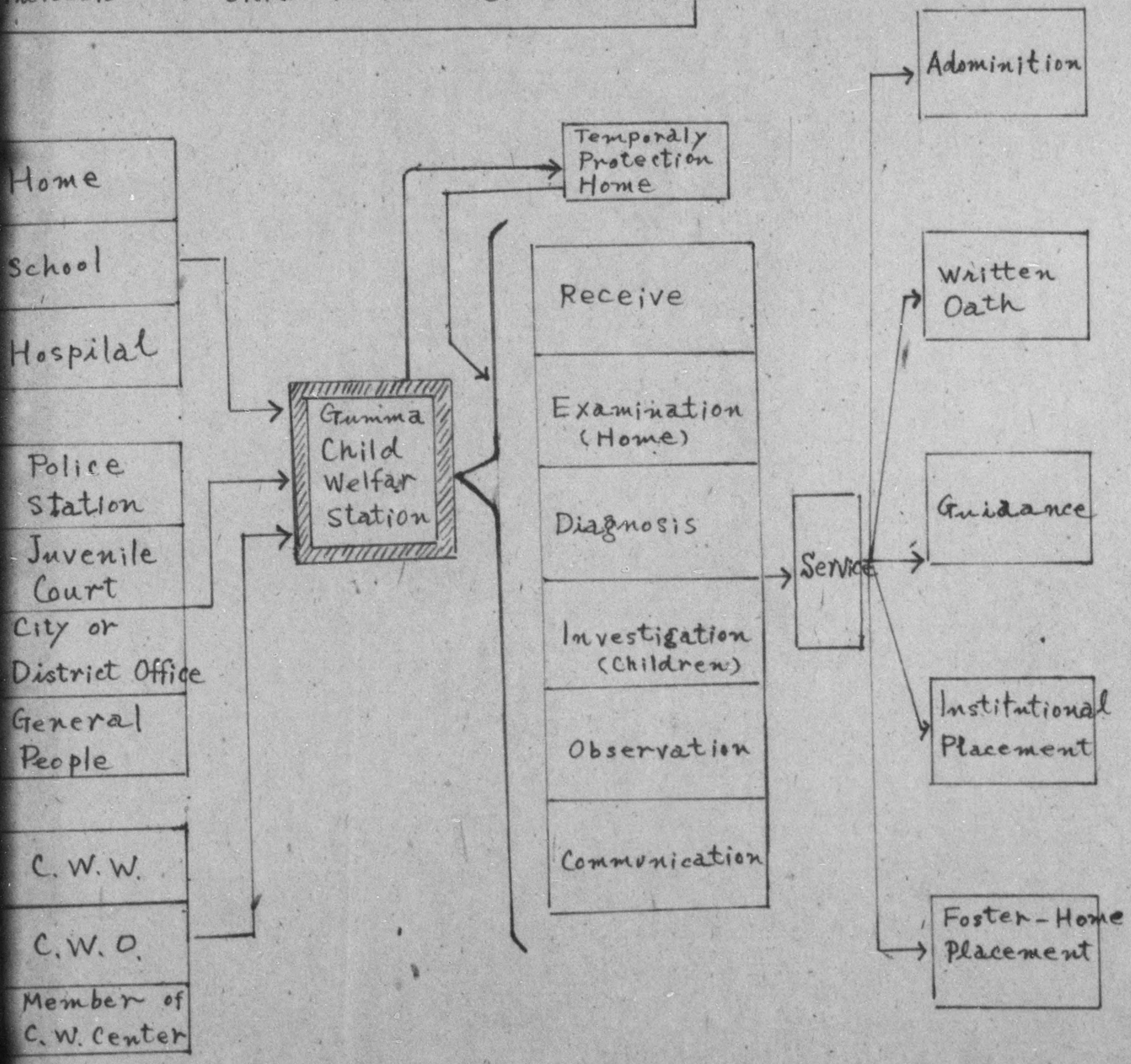
Gamma

- 1 - Jeds - in in middle -
connect to officials & mayor
by dotted lines
2. Straight line from C.W.O. to
instab.
- 3 - Straight line from infant
homes, unabs chdn. & unsi. chdn.
to mad. & th. Health Sub.

775 013

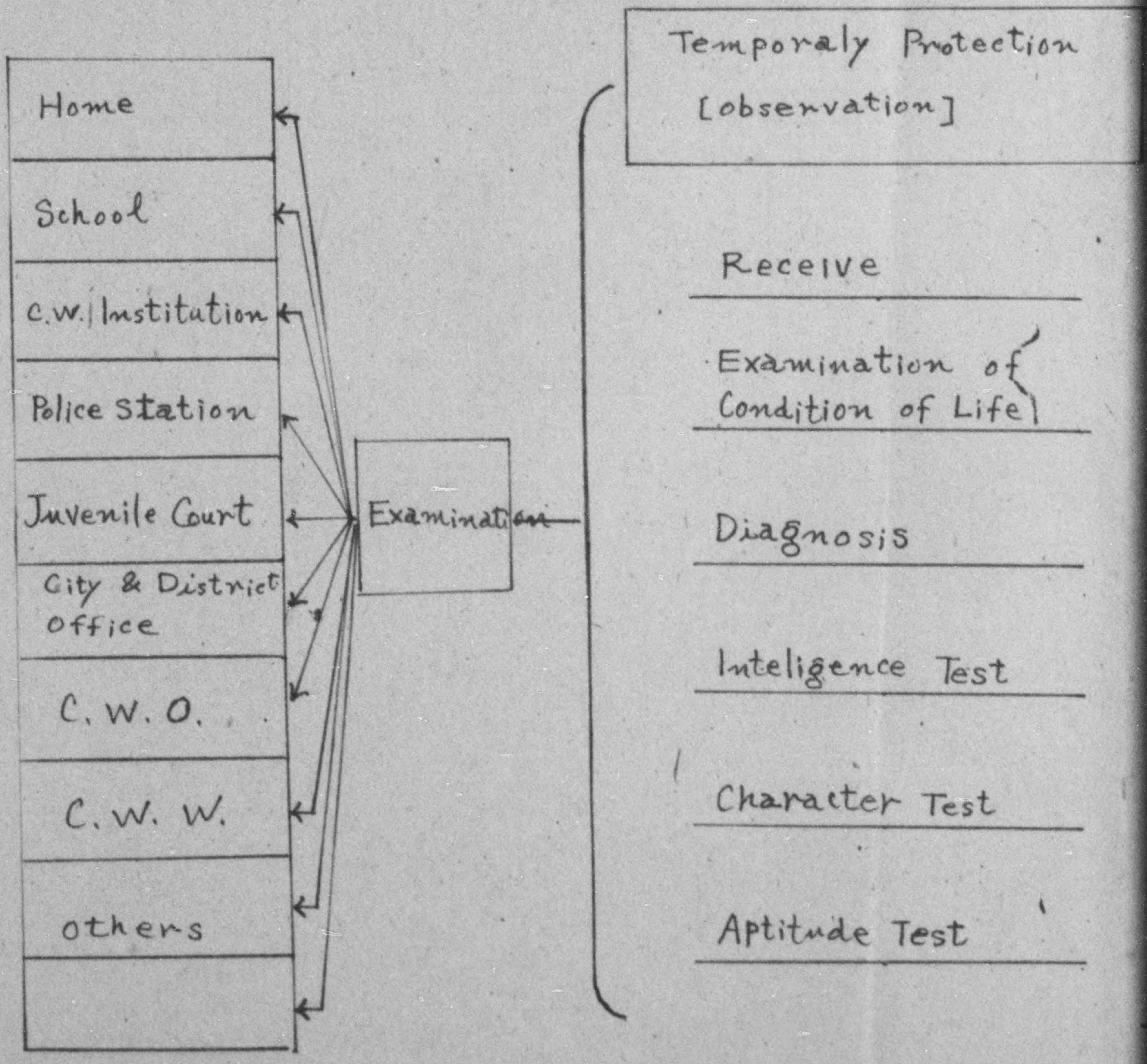


Function of Child Welfare Center

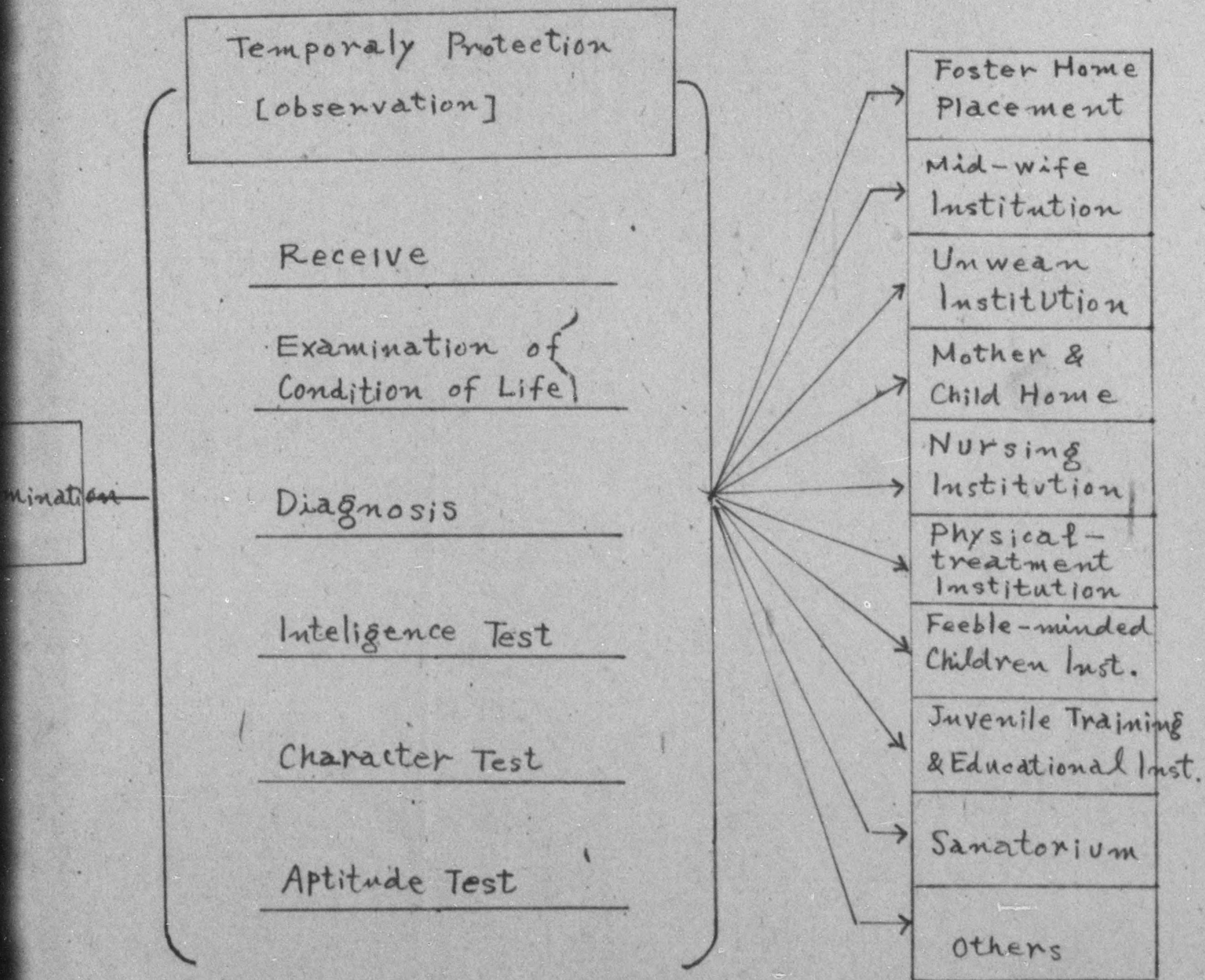


775 013

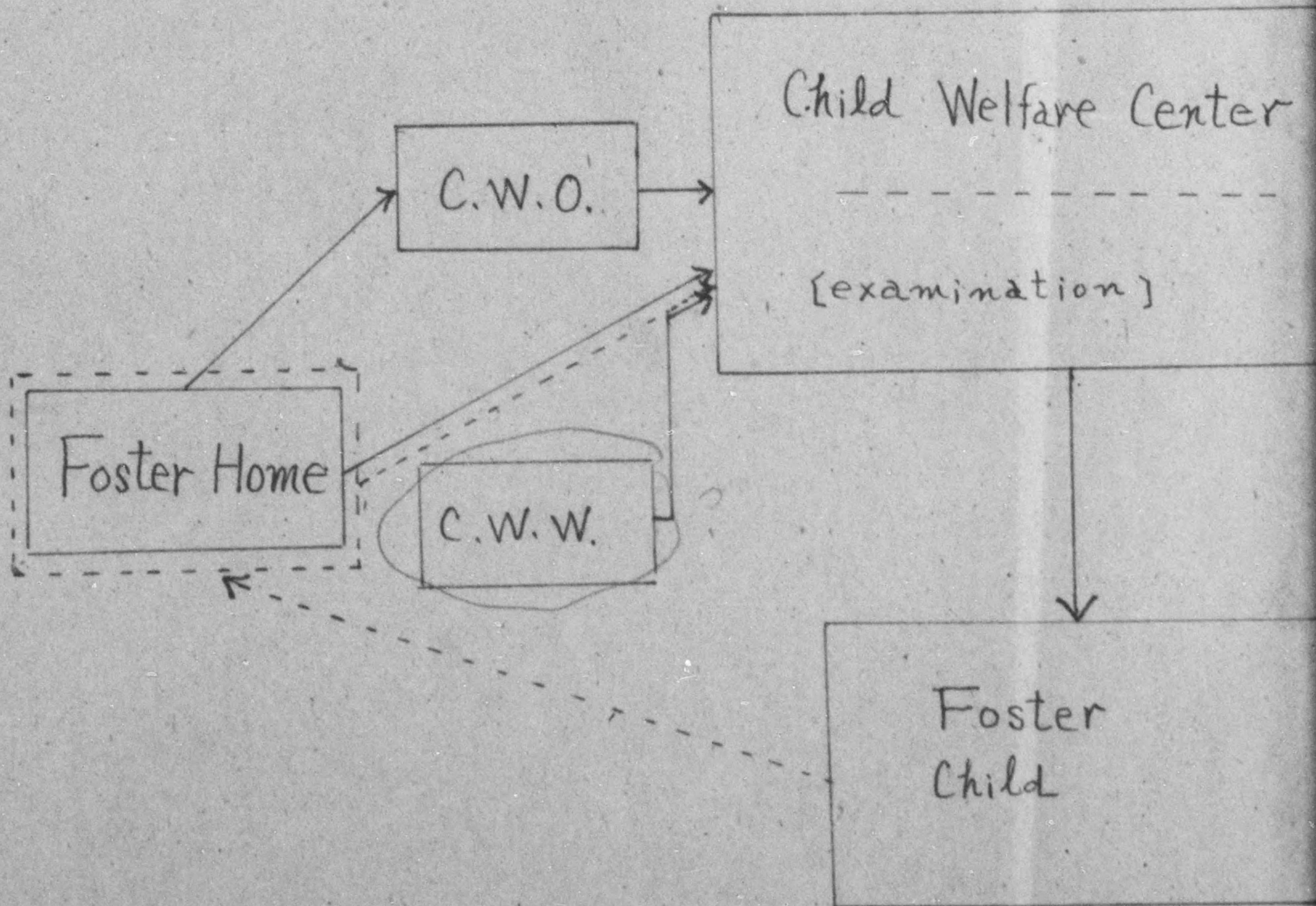
Process of Examination of Child Welfare



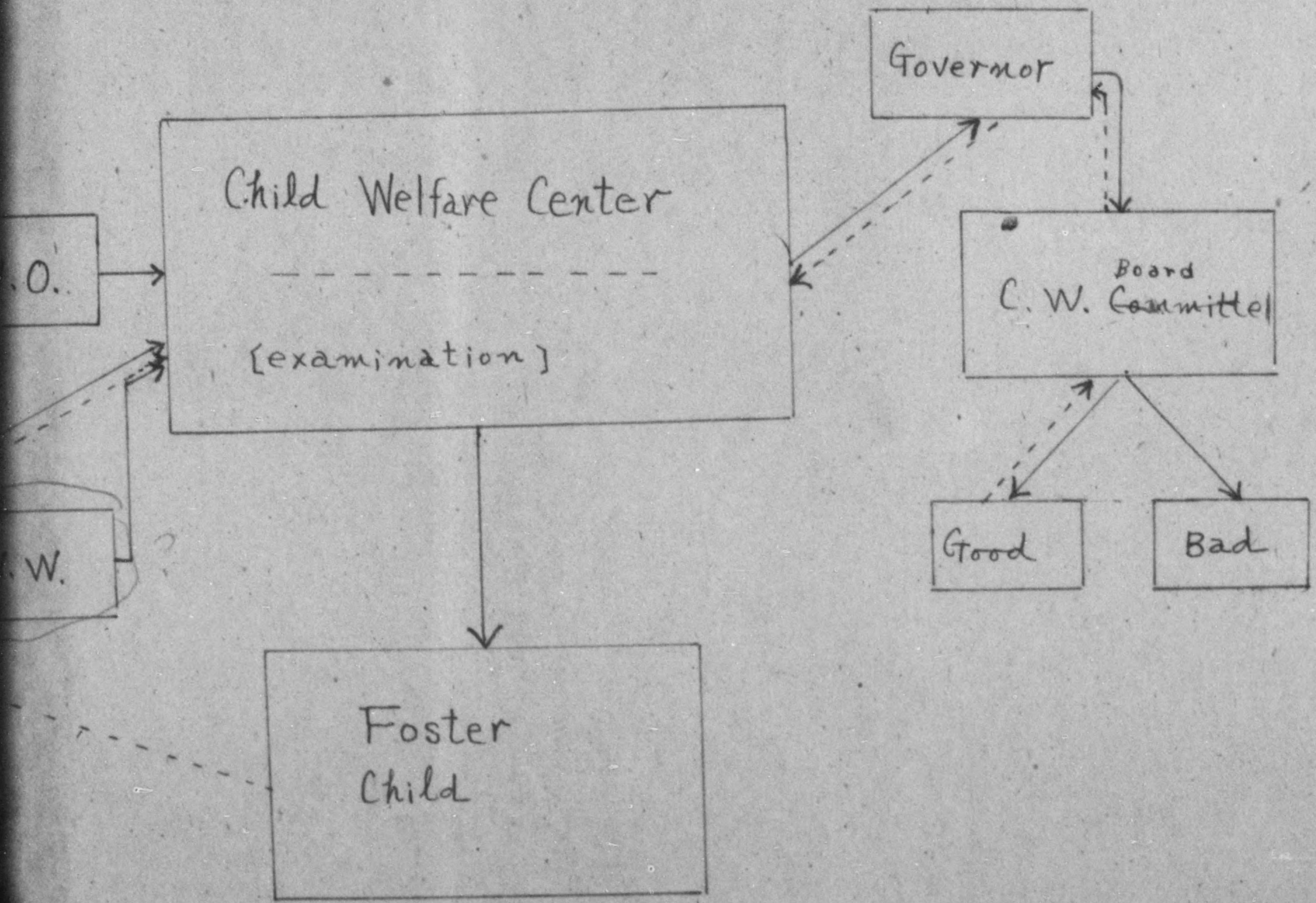
Process of Examination of Child Welfare Center



Foster Home System



Foster Home System



GUMMA

LIST OF DETAILS OF CONSULTED MATTERS (OCTOBER)	CONTENTS OF CONSULTED MATTERS		CONTENTS OF CONSULTED MATTERS									GUIDANCE BY LAW			
			HEALTHY CONSULTATION	MATTERS OF INSTRUCTION	FOR PROTECTIVE CHILDREN	FOR MENTAL WEAK CHILDREN	BAD ENVIRONMENT	ORPHANS & VAGRANTS	THE ILL-TREATED	GENERAL EDUCATION	TOTAL	GUIDANCE BY CHILD WELFARE CHILD COM.	ADMONITION & PLEDGE	ENTER	
														Yofo	SHISETSU
ACCORDING TO ART. 25.	FROM THE JUVENILE COURT	M		6					1		7	3			
		F													
	FROM POLICE STATIONS	M		2							2	1			
		F													
	FROM SCHOOLS	M		1							1				
		F			1						1				
	FROM CHILD COMMITTEES	M		6						1	7	2			
		F		1							1				
	FROM CHILD WELFARE OFFICIALS	M		1	2				2	1	6			2	
		F			1						1				
	FROM CITY & VILLAGE OFFICE	M		1	2				1		4			1	
		F													
	FROM THE GENERAL PUBLIC	M			1						1				
		F													
OTHERS	FROM PERSONS IN QUESTION & GUARDIANS	M	6	3						1	10				
		F	5							5	10				
	FOR VIEW AT SCHOOL	M								191	191				
	F								20	20					
TOTAL	M									229			3		
	F									33		6			

11 21 7 4 1 219

CONTENTS OF CONSULTED MATTERS								GUIDANCE BY LAW				NOT YET EXAMINED	NOTICE
FOR PROTECTIVE CHILDREN	FOR MENTAL WEAK CHILDREN	BAD ENVIRONMENT	ORPHANS & VAGRANTS	THE ILL-TREATED	GENERAL EDUCATION	TOTAL	GUIDANCE BY CHILD WELFARE CHILD COM.	ADMONITION & PLEDGE			WITHOUT LAW		
								Yogo	SHISETSU	Kyogo			
			1			7	3			1			
						2	1			1			
						1					1		
1						1					1		
					1	7	2			2	2	1	
						1					1		
2			2	1		6			2		3	1	
1						1					1		
2			1			4			1		2	1	
						1							1
3						1	10				10		
						5	10				10		
						191	191				191		
						20	20				20		
						229							
						33	6		3	4	242	7	

IBARAKI

MINISTER OF WELFARE

GOVERNOR

Art. 28

COURT OF DOMESTIC RELATIONS

Art. 8, 35, 48, 58,

LOCAL CHILD WELFARE BOARD

WELFARE DEPT.

HEALTH DEPT.

CHILDREN'S SECTION

PUBLIC HEALTH SEC.

DISTRICT OFFICE

HEALTH CENTER

CITY TOWN VILLAGE

Art. 19

MOTHER & CHILD PRE SCHOOL CHILD

EXPECTANT OR NURSING MOTHER

CHILD WELFARE CENTER

CHILD WELFARE OFFICIAL

Art. 26

CHILD WELFARE WORKER

Art. 13

CHILD WELFARE AGENCIES

Art. 26
" 27
" 28

FOSTER PARENTS

CHILD

PEOPLE

Art. 19
Art. 23, 24

Art. 20, 21, 22

A27

Art. 27, 35

Art. 11

