

MG-61

6

$$\frac{145}{4}$$

Report # 53

II C (4)

AIRCRAFT ACTION REPORT

CONFIDENTIAL

RESTRICTED
(Reclassify when filled out)

Ref: -VMB-413 197
VMB-433 93
VMB-443 70

01383

2900

I. GENERAL

(a) Unit Reporting MAG-61 (b) Based on or at Emirau Island (c) Report No. 53
 (d) Take off: Date 9 February, 1945 Time (LZT) 0915-0920L (Zone); Lat. 1°36' S. Long 150° E.
Coordinated medium level bombing strike on
 (e) Mission Tobera # 21, Rabaul, New Britain. (f) Time of Return 1325L (Zone)

II. OWN AIRCRAFT OFFICIALLY COVERED BY THIS REPORT.

TYPE (a)	SQUADRON (b)	NUMBER			BOMBS AND TORPEDOES CARRIED (PER PLANE) (f)	FUZE, SETTING (g)
		TAKING OFF (c)	ENGAGING ENEMY A/C (d)	ATTACKING TARGET (e)		
PBJ-1	VMB413	1	None	1	6 x 300 GP	Inst.
PBJ-1	VMB413	3	None	3	8 x 300 GP	Inst.
PBJ-1	VMB413	2	None	2	4 x 300 GP	Inst.
PBJ-1	VMB433	9	None	8	3 x 650 Depth Charges	AN-M-103 Inst.
PBJ-1	VMB443	9	None	9	6 x 500 GP	Nose: AN-M-103 Inst Tail: AN-M-101A2 Inst.

III. OTHER U. S. OR ALLIED AIRCRAFT EMPLOYED IN THIS OPERATION.

TYPE	SQUADRON	NUMBER	BASE	TYPE	SQUADRON	NUMBER	BASE
PEY	VPB-44	1	Emirau Island				
F4U's	NZ-22	2	same				

IV. ENEMY AIRCRAFT OBSERVED OR ENGAGED (By Own Aircraft Listed in II Only).

(a) TYPE	(b) NO OBSERVED	(c) NO ENGAGING OWN A/C	(d) TIME ENCOUNTERED	(e) LOCATION OF ENCOUNTER	(f) BOMBS, TORPEDOES CARRIED, GUNS OBSERVED	(g) CAMOUFLAGE AND MARKING
None			(ZONE)			
			(ZONE)			
			(ZONE)			

(h) Apparent Enemy Mission(s) _____
 Did Any Part of _____
 (i) Encounter(s) Occur in Clouds? _____ If so, Describe Clouds _____
(YES OR NO) (BASE IN FEET, TYPE AND TENTHS OF COVER)
 Time of Day and Brilliance _____
 (j) of Sun or Moon _____
(NIGHT, BRIGHT MOON, DAY, OVERCAST, ETC.) (k) Visibility _____
(MILES)

V. ENEMY AIRCRAFT DESTROYED OR DAMAGED IN AIR (By Own Aircraft Listed in II Only).

(a) TYPE ENEMY A/C	(b) DESTROYED OR DAMAGED BY:			GUNS USED	(c) WHERE HIT, ANGLE	(d) DAMAGE CLAIMED
	TYPE A/C	SQUADRON	PILOT OR GUNNER			
None						

AIRCRAFT ACTION REPORT CONFIDENTIAL

RESTRICTED
(Reclassify when
filled out)

(OMIT THIS SHEET IF NO ATTACK WAS MADE)

REPORT No. _____

XI. ATTACK ON ENEMY SHIPS OR GROUND OBJECTIVES (By Own Aircraft Listed in II Only).

- (a) Target(s) and Location(s) Tobera #21, N. B. (b) Time Over Target(s) 1130L (Zone) _____
(FOR SHIPS INCLUDE ALL IN AREA UNDER ATTACK)
- (c) Clouds Over Target Scattered cumulus at 2000', Altostratus overcast at 14,000'
(BASE IN FEET, TYPE AND TENTHS OF COVER)
- (d) Visibility of Target clear (e) Visibility unlimited
(CLEAR, HAZY, PARTIALLY OBSCURED BY CLOUDS, ETC.) (MILES)
- (f) Bombing Tactics: Type level Bomb Sight Used Mk 15 mod 7
(LEVEL, GLIDE OR DIVE) (TYPE)
- Bombs Dropped per Run all Spacing varied Altitude of Bomb Release 12,000'
(NUMBER) (FEET) (FEET)
- (g) Number of Enemy Aircraft Hit on Ground: Destroyed None Probably Destroyed None Damaged None

(h) AIMING POINT	(i) DIMENSIONS OR TONNAGE	(j) NO. A/C ATTACKING (k) SQUADRON	(l) BOMBS AND AMMUNITION EXPENDED EACH AIMING POINT	(m) NO. HIT OR A/C DOWN	(n) DAMAGE (None, Minor, Major, Destroyed, or Sunk)
1 Tobera # 21	2800' x 1800'	6 VMB-413	38 x 300 GP		see (c)
same		8 VMB-433	24 x 650 D/D		
3 same		9 VMB-443	54 x 500 GP		
4					
5					
6					
7					
8					

(o) RESULTS: (For all hits claimed on ship targets and for land targets of special interest draw diagram, top or side view or both, as appropriate, showing type and location of hits. For all targets give location and effect of hits, and identify by numbers above. Use additional sheets if necessary.)

Bombs from two squadrons fell along the southeastern edge of the target and then across the southern end of the woods out into the adjacent plantation for a distance of approximately four hundred feet. Holes in these dense woods using possible supplies were opened up revealing little but tangled trees and craters. Bombs from the third squadron fell north of the target doing no apparent damage to small dense groves.

(p) Were Photographs Taken? Yes Photographs of Damage, When Taken, Should Be Attached By Staple

AIRCRAFT ACTION REPORT

~~CONFIDENTIAL~~

RESTRICTED
Re-classify when
tried out

REPORT No _____

XIII. MATERIAL DATA. (Comment freely on performance or suitability following check list at left
Use additional sheets if necessary)

ARMAMENT

Guns, Gunsights
Turrets
Ammunition
Bombs, Torpedoes
Bomb Sights
Bomb Releases

COMMUNICATIONS

Radio, Radar
Homing Devices
Visual Signals
Codes, Ciphers

RECOGNITION

IFF
Signals
Battle Lights
Procedures

PROTECTION

Armor, Points and Angles
of Fire Needing Further
Protection
Leak Proofing

EMERGENCY EQUIPMENT

Parachutes
Life Belts, Life Rafts
Safety Belts
Emergency Kits
Rations, First Aid

NAVIGATIONAL EQUIPMENT

Compasses
Driftsights
Octants
Automatic Pilots
Charts
Field Lighting

INSTRUMENTS

Flight
Power Plant

OXYGEN SYSTEM

**CAMOUFLAGE AND
DECEPTION DEVICES**

STRUCTURE

Airframe
Control Surfaces
Control System
Dive Flaps
Landing Gear
Heating System
Flight Characteristics
At Various Loadings

POWER PLANT

Engines
Engine Accessories
Propellers
Lubricating System
Starters
Exhaust Dampers

HYDRAULIC SYSTEM

ELECTRICAL SYSTEM

Auxiliary Plant
Lights

FUEL SYSTEM

FLIGHT CLOTHING

MAINTENANCE

BASE FACILITIES

Plan Servicing Equipment
Personnel Facilities

REPORT PREPARED BY:

APPROVED BY:

413		433		443	
CALL	PILOT	CALL	PILOT	CALL	PILOT
254B21	Bronleewe	266B21	Adams	279B21	Whitney
255B21	Muehleisen	267B21	Carr	280B21	Hartman
256B21	Oslund	268B21	Percy	281B21	Mueller
257B21	Bouscaren	269B21	Woten	282B21	Schreier
258B21	Carlson	270B21	Smith	283B21	Larson
259B21	Ingberg	271B21	Harpley	284B21	Wetzel
		272B21	Johnston	285B21	Stewart
		273B21	Fischer	286B21	Wilson
		274B21	Benjamin	287B21	Ballou

A wooded area, 2800' x 1800', northeast of the eastern end of Tobera strip, has been designated as Target # 21. This was the objective for a strike which was planned as a coordinated effort by planes from Emirau and Green. However, bad weather held the aircraft at Green on the deck.

Three squadrons took off from Emirau and followed the course as originally planned to approach the target from the south. Leaving the rendezvous point on Jammer Bay the flight headed north and changed formation of the group to a flat left echelon with squadrons in open vees javelined down to cover the target. The bomb run on a heading of 345° was at 12,000' instead of 12,900' as planned because of the heavy overcast. After breakin to the right the flight rallied south of Duke of York and returned dodging threatening build-ups enroute.

One plane of the leading squadron returned to base soon after take off because of malfunction of the propellor governor.

D. E. HATCH,
Capt., USMCR,
Group Intelligence Officer

P. K. SMITH,
Col., USMC,
Group Commander

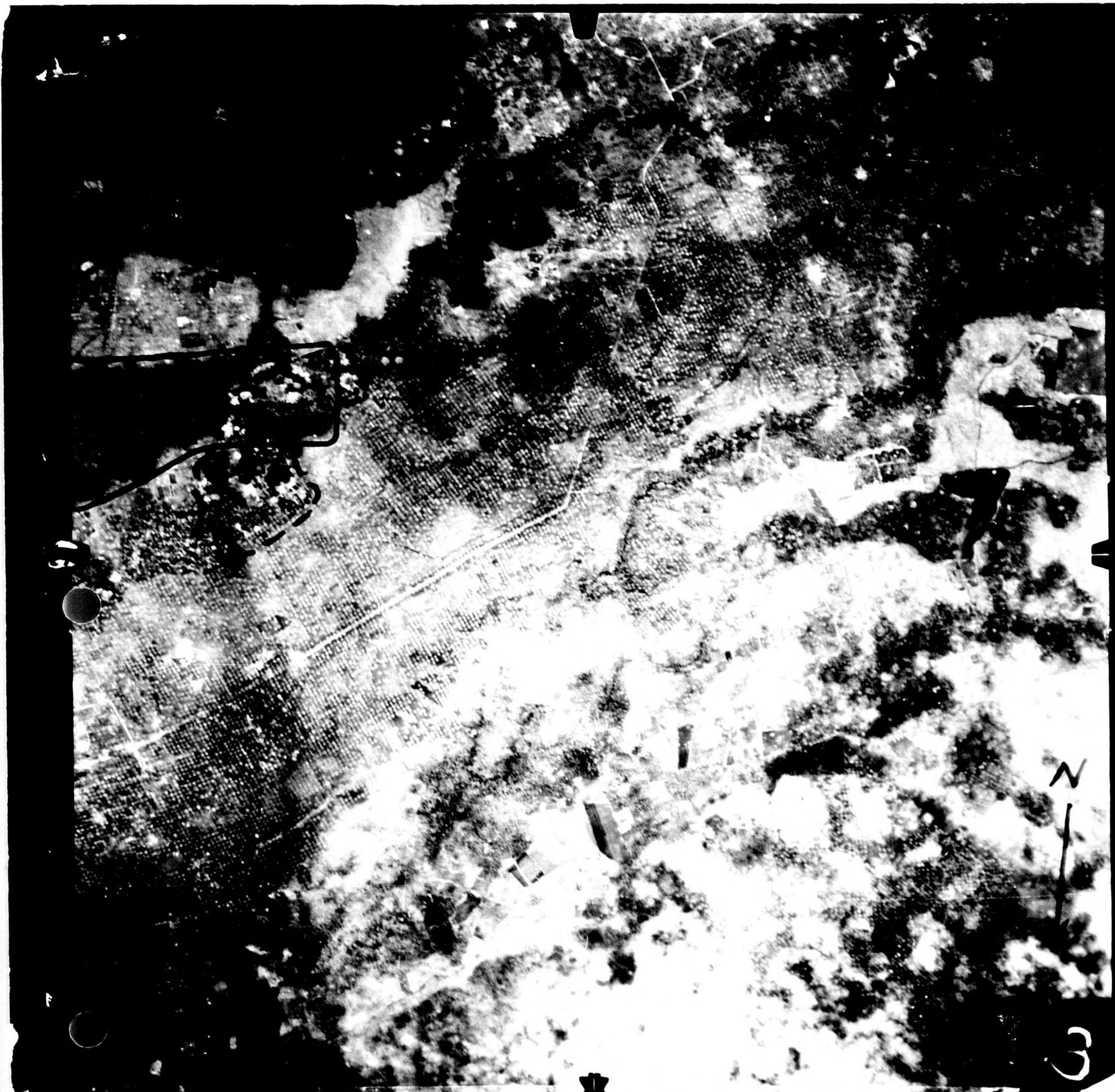
SIGNATURE

RANK AND DUTY

SIGNATURE

RANK AND DUTY

DATE



VMB 43-132 (11500') (18'14") Tobera, NB. 9 Feb 45

EASTMAN REGULAR SAFETY

EASTMAN REGULAR SAFETY

