

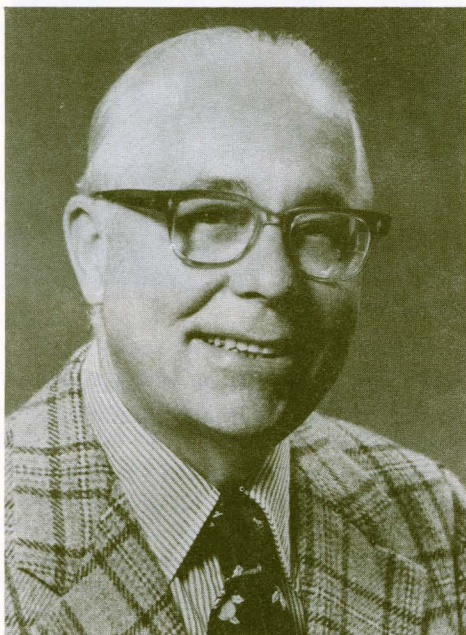
# NEWS & EVENTS

Rochester Institute of Technology

Vol. 12, No. 15, April 17, 1980

## Gasser Lecture

# Management Tasks Are Changing



GEORGE A. STEINER

**G**eorge A. Steiner, noted author, lecturer and advisor, will deliver the fourth annual William D. Gasser Distinguished Lectureship in Business at RIT on April 17. The focus of his speech will be the effects of environmental pressures on the management structure.

Steiner is the Harry and Elsa Kunin Professor of Business and Society and professor of management and public policy in the Graduate School of Management at UCLA. He is also director of the Center for Research and Dialogue.

A veteran of top-level administrative posts in the federal government, he also has served as senior economist with the Lockheed Aircraft Corporation. Steiner has authored 15 books in the business field and has co-authored and contributed to 22 others.

Steiner has spent the past several months interviewing chief executive officers of major corporations. He has found "significant changes in the management task of the typical CEO of a large corporation which in turn have altered the infrastructure and the decision-making processes inside companies and the companies' role in the community."

By environmental forces, Steiner explains, "There is in mind not only such forces as changing attitudes of people in organizations but outside forces such as the legal, economic, environmental, consumer, social and so on."

The William D. Gasser Distinguished Lectureship was established by Jones Chemicals, Inc., Caledonia, N.Y., as an annual lectureship in RIT's College of Business, in recognition of Professor William Gasser.

Gasser joined the College of Business faculty in 1967 when he retired as partner-in-charge of the Rochester office of Haskins & Sells. He taught accounting courses at RIT until his death in August 1977.

Professor Gasser served as an independent auditor of Jones Chemicals, Inc. from 1940 until 1967, then became a member of the company's board of directors and secretary to several companies owned by company president John Wiley Jones.

Jones established the chemical company in 1929 as a manufacturer of household bleach. The company has since grown to a national network of 27 manufacturing and distribution centers supplying chlorine for municipal water and sewage systems throughout the United States and in a number of foreign countries.

Jones is a member of the RIT board of trustees and active in a number of civic organizations. He has served as acting chairman of the Selective Service Board, president of the Genesee Council of the Boy Scouts of America and president of the Livingston County Chamber of Commerce.

Steiner will spend a good part of the day with RIT business students and will deliver his address in the Henry Lomb Room after a noon luncheon there.

---

## Human Resources Expert at RIT

**W**ilma Scott Heidi, a scholar, educator and consultant in human resources, will be at RIT on Thursday, April 24. She will meet with selected campus leaders and students.

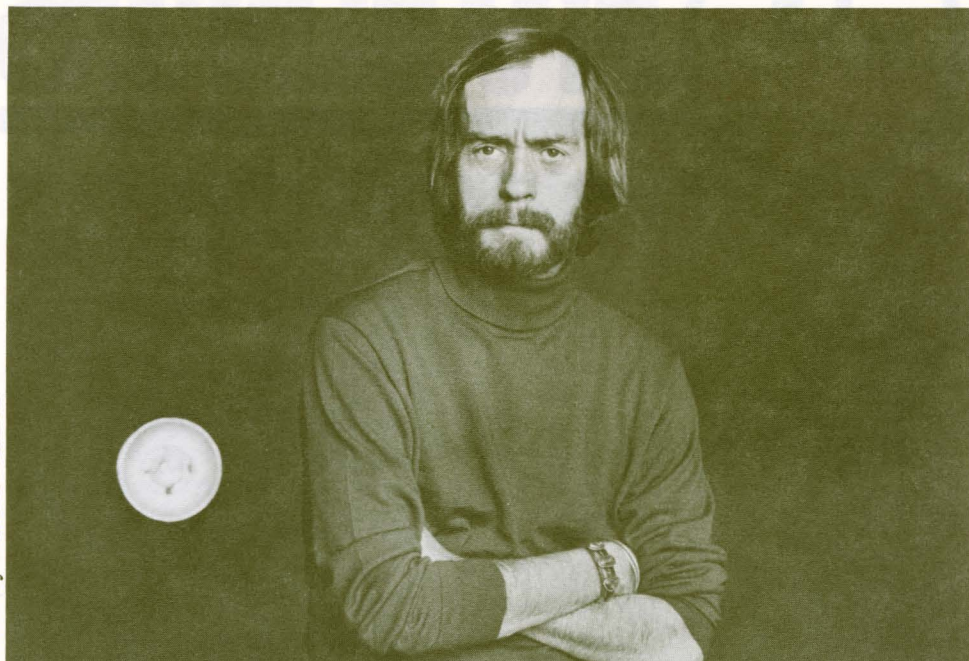
Dr. Heidi's expertise is in the area of developing institutional change processes to adjust to changing campus demographics; for example, increased enrollment of women and minorities. She recently was a Distinguished Visiting Scholar at the University of Massachusetts.

Academic leaders will be able to meet with Dr. Heidi in the Faculty Center from 2:30-3:30 p.m. on April 24. For further information, contact Elaine Spaul, ext. 2267.

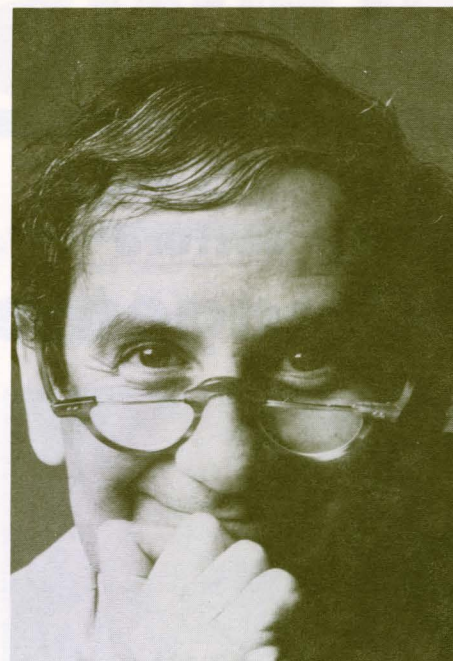


# The Impact of Excellence

Photo by Martha Pearson



PETE TURNER



HENRY WOLF

## Fourth in a series

As part of its continuing series on the outstanding professionals participating in the Impact of Excellence at RIT, May 14 and 15, *News & Events* this week features biographical sketches of Pete Turner and Henry Wolf.

Pete Turner is internationally recognized as one of the top color photographers working today.

Turner's photographs hold an important place in contemporary expression.

Turner attended RIT's School of Photographic Arts and Sciences prior to entering the field of commercial photography. Minor White and Ralph Hattersley were among the faculty at that time. Turner calls RIT the toughest training ground in the country for professional photography.

---

## NEWS & EVENTS

Published weekly on Thursday during the academic year by the Communications Office at Rochester Institute of Technology and distributed free of charge to the Institute community. For information call 475-2750.

---

As a professional photographer-for-hire, Turner has made images for a considerable variety of purposes. Some have been specifically conceived to sell products, photographing subjects from space-ships to cosmetics. Others have been made to fulfill editorial assignments—as illustrations or as photo-essays. And still others have been made for more personal motives.

"A photographer's work is given shape and style by his personal vision. It is not simply technique but the way he looks at life and the world around him. His interests will influence his approach. I have always been an avid science fiction reader and I think this comes through in my work," Turner states.

Science fiction often deals with the improbable. Turner's photographs reflect surrealistic combinations of shapes and colors that often defy the laws of gravity and time. But reality is there and is treated with imagination and versatility.

Art director, designer and photographer Henry Wolf holds a career of excellence firmly in his grasp.

His most recent work includes design and photography assignments for IBM, Mobil, CBS, Champion Paper,

Van Cleef and Arpels, B. F. Goodrich, Knoll, Herman Miller and General Telephone.

He has been designer and art director for magazines including *Esquire*, *Harper's Bazaar* and *Show* and has worked as director for Tinker & Partners, McCann-Erickson, Inc. and Trahey/Wolf Advertising.

Through the years, recognition of Wolf's achievements by his peers has been plentiful.

In his mid-50s, Henry Wolf continues in a career that began to take leaps forward more than 25 years ago. He shows a singularly dramatic and creative fresh vision and can be counted on to envelop the viewer in a carefully crafted moment.

Wolf's editorial photography has most recently appeared in *McCall's*, *Esquire*, *New York*, *House Beautiful* and *Time*.

Additionally, Wolf provided the still photography and titles for the film *Kramer vs. Kramer* and is presently designing a magazine for public television.

Henry Wolf was a 1978 William A. Reedy Memorial Lecturer in Photography at RIT.



# PROFILE

## 'You Don't Need to Be Tough'

**C**olette Doster was always intrigued by espionage shows like "Mission Impossible" and now pursues an off-shoot of this interest as an RIT Security patrol officer.

"It doesn't have the excitement of my childhood dreams, but it does offer me a chance to help make RIT a safer and more secure place to be," she says.

Colette contends with passing out tickets and calming down tempers. She also tests building locks and travels a beat, either on foot or in a patrol car for overall security checks.

A soon-to-be May graduate of RIT's College of General Studies, criminal justice program, Colette works full time for Campus Safety and is finishing her criminal justice field placement requirement by working as a campus officer.

Prior to her full-time position, Colette worked as a student officer for RIT's safety team, where she reported minor gym and ice-rink injuries and responded to other security needs.

A Monroe Community College graduate, Colette transferred to RIT in 1975. She found her RIT law courses helpful during her first field placement at the Monroe County Sheriff's Office. There she worked in both the community services and juvenile offices, was exposed to public relations presentations at local schools and assisted with family court cases involving run-aways.

As a security patrol officer, Colette is now on the midnight to 8 a.m. shift on the dorm side of campus. "Each day," she says, "I learn more about how to handle different security situations that occur on campus, and the more exposure I have, the more self-confident I become."

This job, Colette feels, is a good stepping-stone to her ultimate career goal in a management level position of industrial security. But for now, Colette likes the mobility of the job—physically moving around the campus.

She shares her responsibilities with a staff of 16 patrol officers who must cover the three round-the-clock campus shifts. "Officers usually work a minimum of 40 hours per week and add overtime hours for special events, concerts or other activities that require campus security," Colette explains.



COLETTE DOSTER

Her family have always been supportive of her career, although none of her siblings (three sisters and one brother) has shown a similar interest. But Colette will be joined on graduation day by a younger sister, who will receive her degree from Institute College's computer science technology program. The sisters respect each other's career choice but agree that they would both be bored if they switched.

Asked about strategies for handling a 10/100 (code that indicates an officer needs assistance), Colette says they always call for a back-up officer on these cases. Generally she doesn't rely on scare-tactics or force to do her job. "You don't need to be tough for this job, just understanding and sensitive to the people you're trying to help," she maintains.





Congressman Frank Horton, who recently toured the new School for Applied Industrial Studies (SAIS) facilities on City Center campus, shakes the hand of RIT student Maurice McAbrew. SAIS trains skilled workers in the machine tool technologies for Rochester industry.

## NEWS & NEWSMAKERS

Bill Carey, director of athletics and head basketball coach at RIT, has resigned his position to become director of athletics at Nazareth College. The move is effective July 1, 1980. Carey came to RIT in September 1966. He took over as head basketball coach in 1968 and was named director of athletics July 1, 1977.

Gerda Dymysza has announced her resignation as director of the Horton Center Advisory Committee for the Horton Day Care Center, effective May 31. Ms. Dymysza has served as director for eight years, since the start of the Day Care Center. She will be moving to Atlanta, Ga., where she has accepted a position with the Economy Company as educational consultant for the Southeast region. The Economy Company publishes educational materials.

Effective June 1, Lita Boudakian will be acting director/teacher of the center. Ms. Boudakian has been a kindergarten teacher at the center for the past five years.

## Engineers Strike

A strike by members of Local 71 of the International Union of Operating Engineers created widespread inconvenience on the RIT campus Monday. According to H. Donald Scott, RIT's Assistant Vice President for Finance and Administration, "water, heating and ventilation systems on campus were shut down on campus prior to the walk-out, Monday at 4:00 a.m. These shut-downs, many of which could only be accomplished by highly skilled people, caused particular inconvenience for the RIT students." But he added, "Supervisory personnel and private contractors had most systems restored by early Tuesday morning."

Local 71 is the only union on the RIT campus, and has been negotiating its first contract since January. The union represents 49 operating engineers, maintenance staff and groundskeepers. Negotiations are continuing.

## DATEBOOK

thru April 24—Bevier Gallery presents the "Graduate Thesis Show I," the works of graduate students in the College of Fine and Applied Arts. Gallery hours: daily, 9 a.m.-4 p.m.; Monday to Thursday 7-9 p.m.; Saturday 1-5 p.m.; Sunday, 2-5 p.m.

April 17—George A. Steiner, The Harry and Elsa Kunin Professor of Business and Society at UCLA, will present the 1980 William D. Gasser Distinguished Lectureship in Business, Room No. 2000, Administration Building, Rochester campus, open to the public.

"Insurance Plans As They Relate to Health Care," second of three workshops on health care planning, Max Lowenthal Memorial Building Room 1428, public welcome; admission \$10.

Stagecoach, 7:30 p.m. +(W)

April 18—Voyage to Grand Tartarie, 7:30 and 10:00 p.m., +(W)

April 19—Watership Down, 7:30 and 10:00 p.m., +(W)

April 20—The 400 Blows, 7:30 p.m., +(W)

April 22—Local Color, 7:30 p.m., +(W)

April 23—The Scenic Route, 7:30 p.m., free showing (I)

April 24—Human Desire, 7:30 p.m., +(W)

CAB presents Dave Mason and special guest, Commander Cody, at the Frank Ritter Ice Arena, at 8 p.m. Tickets are available at Record Theatres, House of Guitars, M.C.C., Brockport, U of R and RIT Candy Counter. For more information call CAB, ex. 2509.

"Thursday Noon at RIT" at the Rochester campus, featuring a lecture by Stanley D. McKenzie entitled "Hamlet." RIT College-Alumni Union, 1829 Room, 12:10-12:50 p.m. Free and open to the public.

"Legal and Ethical Aspects of Long-Term Health Care," the third of three workshops on health care planning, Max Lowenthal Memorial Building, Room 1148, 7:30-9:30 p.m., public welcome; admission \$10.

April 27—Violette, 7:30 p.m., +(I)

April 29—Sunshine and Co. Auditions—NTID Theatre—7-9 p.m. Call ex. 6251 for details.

\*-Library hours: Monday-Thursday, 8 a.m.-11 p.m.; Friday, 8 a.m.-6 p.m.; Saturday, 9 a.m.-6 p.m.; Sunday, noon-9 p.m.  
+Talisman Film Festival: (I)=Ingle Auditorium; (W)=Webb Auditorium; \$1.50 unless otherwise indicated.

Noon luncheons are being served in the Henry Lomb Room. The cost is \$2.25, and reservations can be made by calling ext. 2351.