


THE BOOK OF THE
BOSTON ARCHITECTURAL
CLUB FOR THE YEAR 1918
EARLY COLONIAL ARCHITECTURE
IN NEW ENGLAND

FRANK SEWALL OWEN
ARCHITECT



Digitized by the Internet Archive
in 2013

<http://archive.org/details/bostonarchitectu1918bost>



OLD DOORWAY AT NAYATT, R. I.

Photographed by Julian Buckley

THE PROCEEDS OF THIS BOOK ARE DEVOTED SOLELY TO THE MAINTENANCE OF THE
EDUCATIONAL WORK OF THE BOSTON ARCHITECTURAL CLUB

BOSTON
ARCHITECTURAL CLUB
YEAR BOOK

WITH
SELECTED EXAMPLES OF EARLY COLONIAL ARCHITECTURE
IN NEW ENGLAND



PUBLISHED BY THE
BOSTON ARCHITECTURAL CLUB
16 SOMERSET STREET

1918

THE COMMITTEE

JAMES FORD CLAPP
HARRY J. CARLSON
CHARLES D. MAGINNIS

ALEXANDER E. HOYLE
HUBERT G. RIPLEY
THOMAS P. ROBINSON

A. FRANCIS LAW
THOMAS M. JAMES
LOUIS C. NEWHALL

FREDERIC V. LITTLE
SECRETARY

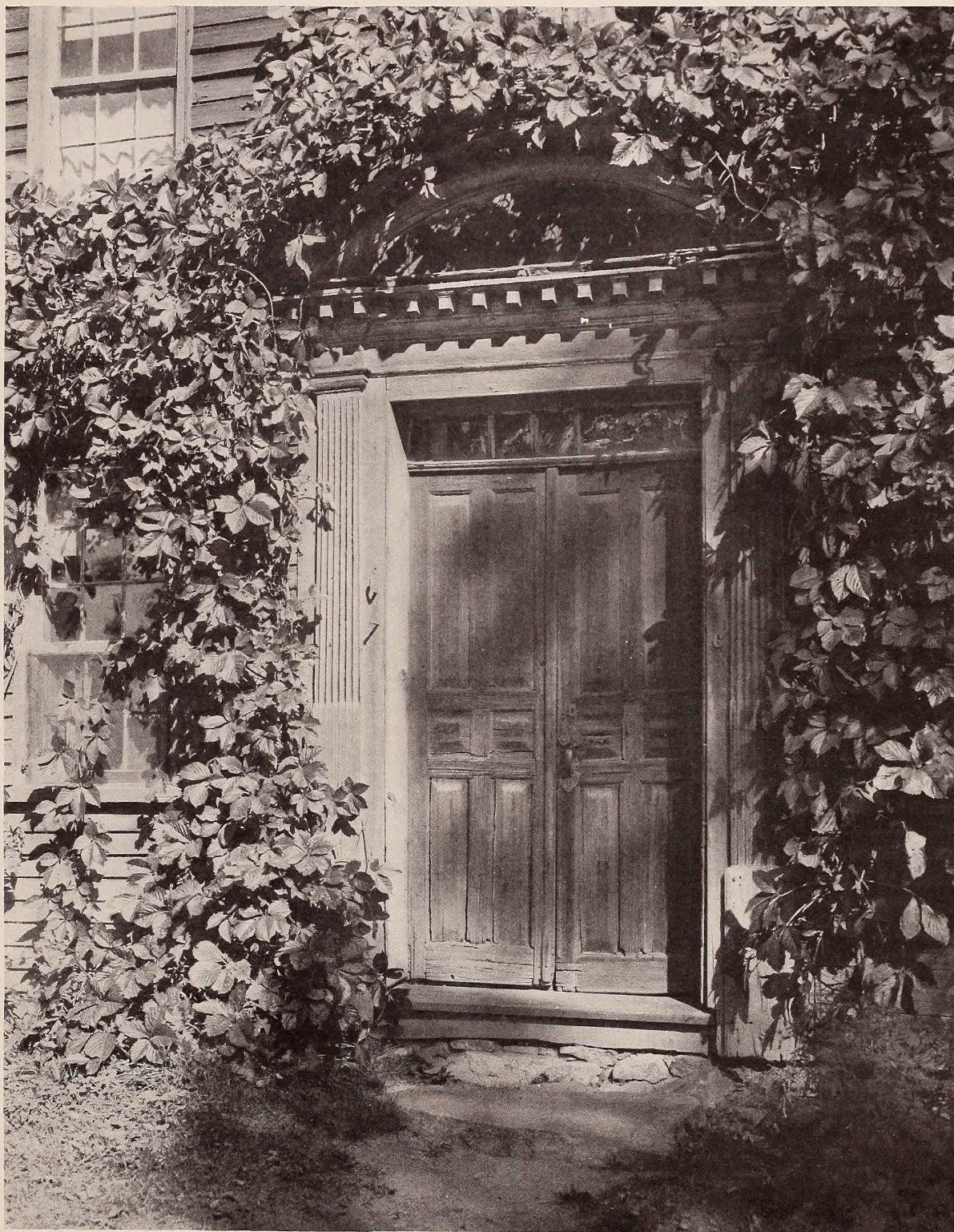


Photograph by Julian Buckly

AN APPRECIATION

JULIAN BUCKLY: A CHARMING GENTLEMAN, MODEST TO THE POINT OF DIFFIDENCE, MERCILESS IN SELF-JUDGMENT,—AN ARTIST POSSESSING THE TRUEST SENSE OF ARCHITECTURAL VALUES COMBINED WITH THAT RARE FACULTY OF INTERPRETATION WHICH ENABLED HIM TO DEVELOP UNDERSTANDING AND APPRECIATION IN THE LAY PERSON AS WELL AS THE TRAINED ARCHITECT.

THE COMMITTEE MAKES THIS ACKNOWLEDGMENT OF ITS DEEP OBLIGATION TO THE "WHITE PINE BUREAU" THROUGH WHOSE COURTESY IT IS POSSIBLE TO PRESENT, IN PERMANENT FORM, MUCH VALUABLE MATERIAL NOT OTHERWISE AVAILABLE.



SHORT HOUSE, NEWBURY, MASS., 1717

Photographed by Julian Buckley

PETTINGELL-ANDREWS COMPANY

BOSTON, MASSACHUSETTS

ASKS THE PATRONAGE OF ARCHITECTS
AND THEIR CLIENTS.

AN UNSURPASSED STOCK OF ELEC-
TRICAL GOODS, FIXTURES, AND CON-
NECTIONS ASSURES PERFECT SERVICE.

ARTISANS WHO FABRICATE WITH
INTELLIGENT APPRECIATION OF THE
SPIRIT OF THE DESIGN ENTRUSTED TO
THEM AS MASTER CRAFTSMEN ASSURE
SATISFACTION.



THE JEWETT HOUSE, SOUTH BERWICK, MAINE



This is a photograph of a cross-section cut from Barrett Specification Roof on the National Aviline & Chemical Company, Buffalo

Above photo shows why we dare **Guarantee** Barrett Specification Roofs for 20 years —

Above is a photograph of a cross-section cut from a Barrett Specification Roof.

Note its great thickness.

Note the five alternating layers of Specification Pitch and Felt Waterproofing.

Note the heavy wearing-surface of Slag bound with Pitch.

No other type of roofing approaches a Barrett Specification Roof in the amount of protective, waterproofing material used in its construction.

The weight of this waterproofing material is about 250 lbs. to 100 sq. ft., compared with 175 to 100 lbs. used in other types of roofs.

The wonder is *not* that we dare guarantee such a roof for twenty years, but that some people still buy light-weight, poorly constructed roofs and expect them to give long and satisfactory service.

Lower Cost per Year of Service

The buyer naturally asks, "Do such roofs cost more than others?" Our answer is, "*No, they do not.*"

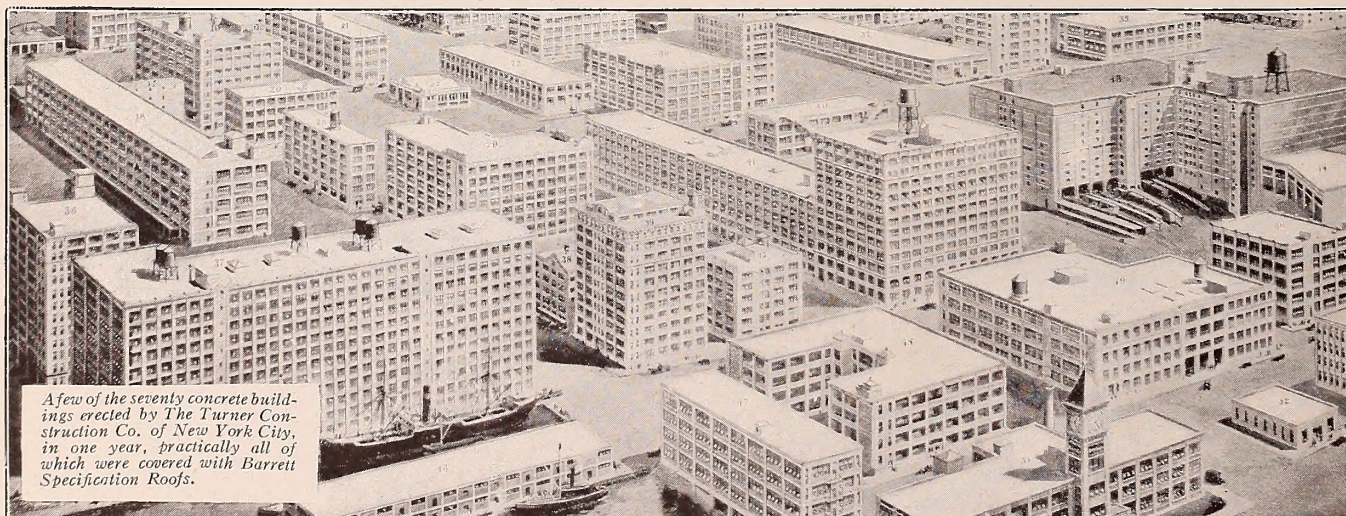
The experience of many years has proved that Barrett Specification Roofs *cost less per year of service* than any other kind. It is because they give such long service at such low cost that this type of roofing now covers most of the permanent structures of the country.

It is because of these facts that leading architects, engineers, and roofing contractors everywhere are co-operating with us in the better-roofs movement and why large construction companies like the Turner Construction Company, the Fuller Construction Company, the Austin Company, and many others, are so strong for Barrett Specification Roofs.

Booklet explaining our 20-Year Guaranty and a copy of The Barrett Specification free on request.

The *Barrett* Company

New York	Chicago	Philadelphia	Boston
St. Louis	Cleveland	Cincinnati	Pittsburgh
Detroit	Kansas City	Minneapolis	Nashville
Birmingham	Salt Lake City	Seattle	Peoria
THE BARRETT COMPANY, Limited:			Toronto
Winnipeg	Vancouver	St. John, N. B.	Halifax, N. S.
			Sydney, N. S.



A few of the seventy concrete buildings erected by The Turner Construction Co. of New York City, in one year, practically all of which were covered with Barrett Specification Roofs.



CAPEN HOUSE AT TOPSFIELD, MASS., SEVENTEENTH CENTURY

Photographed by Julian Buckley



THAT the ideal home is more a matter of proper selection and arrangement of furniture and decorations than of mere expense, is shown conclusively by this illustration of Paine's Old English Room. Visitors welcome always.

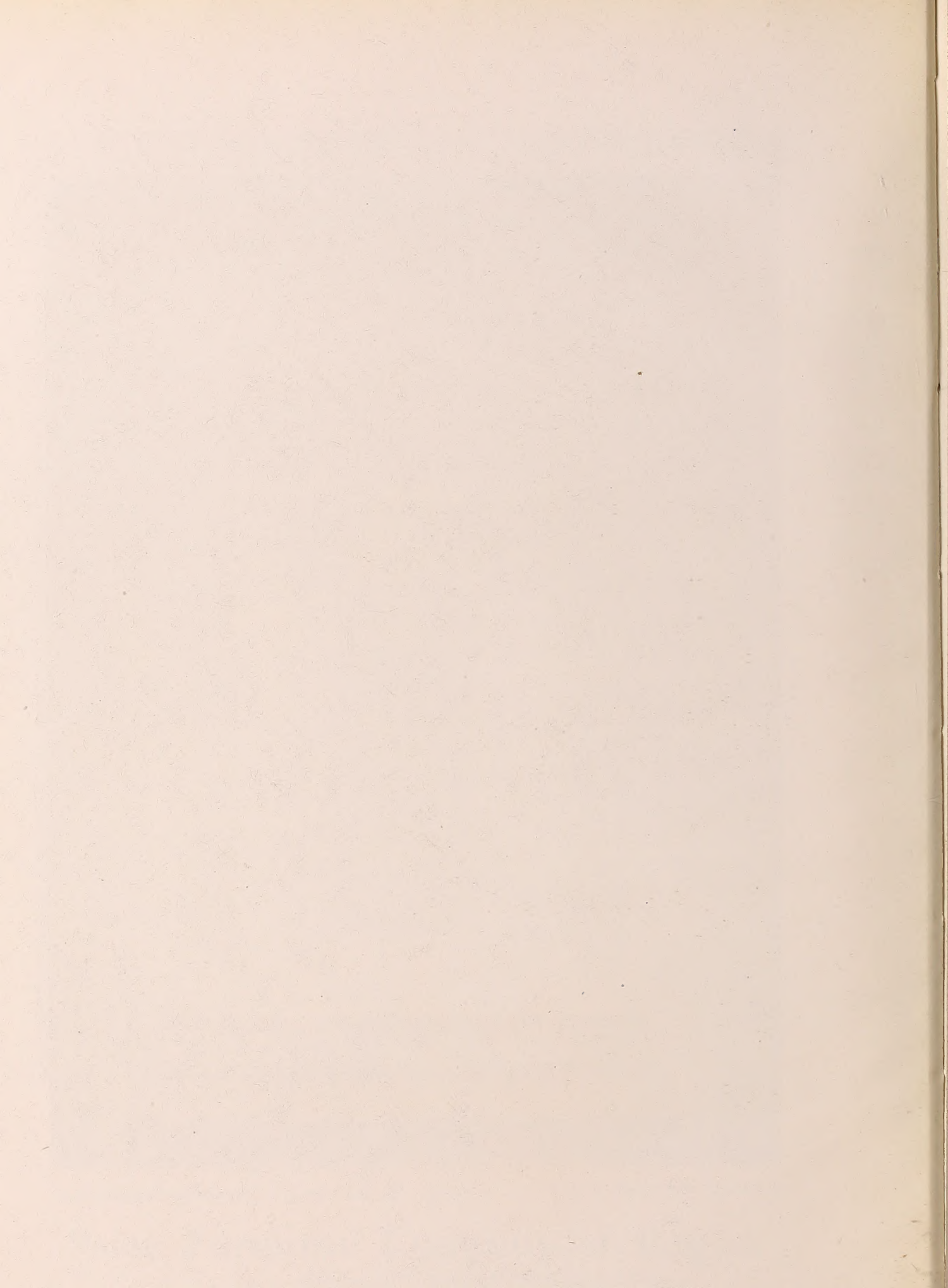
Paine Furniture Company of Boston

For 83 years in the manufacture and distribution of Furniture and Decorations



DOORWAY, HARWOOD HOUSE

Photographed by Julian Buckley





HOUSE AT WAYLAND, MASS., BUILT ABOUT 1800

Photographed by Julian Buckley



NEAR NYAC, CONNECTICUT

Photographed by Julian Buckley



THE FRARY HOUSE, DEERFIELD, MASS.

Photographed by Julian Buckley



DOORWAY,
THE BRADBURY-
SPALDING HOUSE
at Newburyport, Mass.
Built circa 1790

The front elevation of this house was shown in Volume III, Number 3, of The White Pine Monographs.

EARLY Colonial Work in Massachusetts has done much to establish the reputation of White Pine as a building wood. With the exception of a few scattered brick buildings in the larger settlements, the domestic, political, and religious history of the early Commonwealth centered about its White Pine buildings, many of which stand to-day to tell us of the life and aspirations of the Fathers.

The White Pine of our time is identically the same as the White Pine of Colonial days. By using it, the architect leaves a permanent record of his work, and gives the client a durable, economical house.

WHITE PINE BUREAU
MERCHANTS NATIONAL BANK BUILDING, SAINT PAUL, MINN.



THE ROYALL HOUSE, MEDFORD, MASS., 1732

Photographed by Julian Buckley



THE CROWNSHIELD HOUSE AT DANVERSPORT, MASS., 1798



*Shingled Walls and Brick Chimneys finished with Cabot's Old Virginia White
John Russell Pope, Architect, New York*

Cabot's Creosote Shingle Stains

The original and standard shingle stains. Soft, rich, and transparent coloring effects, guaranteed wearing qualities, thorough preservation of the wood. The thoroughly reliable stain, proved by thirty-five years' use under all conditions.

Cabot's Old Virginia White

The Modern Architectural Outside White

The clean, brilliant, "whitewash white" effect of Old Virginia White has real distinction. It is a softer and yet a brighter white than paint, and its texture and color-values are essentially different in character from the heavy, hard paint coating. This makes it especially appropriate for the modern "Colonial," because it gives the house at once the aspect of well-groomed old age—a result that it would take years to accomplish with paint.

Cabot's Old Virginia Tints

This softness and textural quality have led many of the leading architects to call for the same compound in tints, and Cabot's Old Virginia Tints are now made in a wide variety of delicate shades. The tones are almost pastel-like in quality, and the effects produced are most unique and pleasing.

Cabot's Stucco Stains

For staining and rainproofing cement buildings. Rich colorings, without gloss or shine, and with no coating to chalk or peel.

Cabot's Waterproof Brick Stains

Made in various colors, for faded, off-colored, or uneven brick, and colorless for waterproofing only.

Cabot's Sheathing and Deafening "Quilt"

Warmer, more permanent, and cheaper than back-plaster. The most scientific, sanitary, and perfect heat insulator and sound deadener ever made.

Conservo Wood Preservative

For preserving posts, sills, planks, and all similar woodwork.

Damp-proofing

An adhesive, damp course for direct plastering.

Full information on request

Samuel Cabot, Inc., Manufacturing Chemists **Boston**

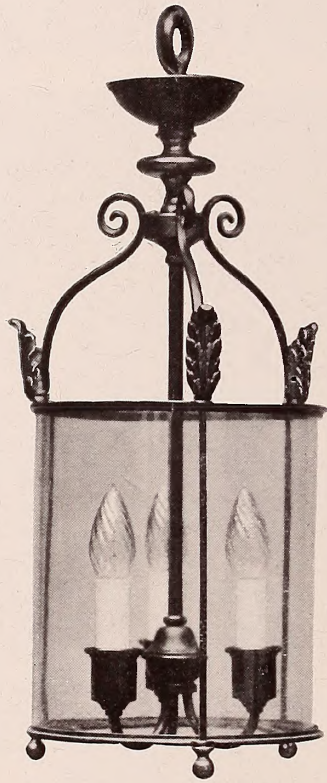
1133 Broadway, New York

24 W. Kinzie St., Chicago



ELLIOTT HOUSE, NEWBURYPORT, MASS.

Photographed by Julian Buckley



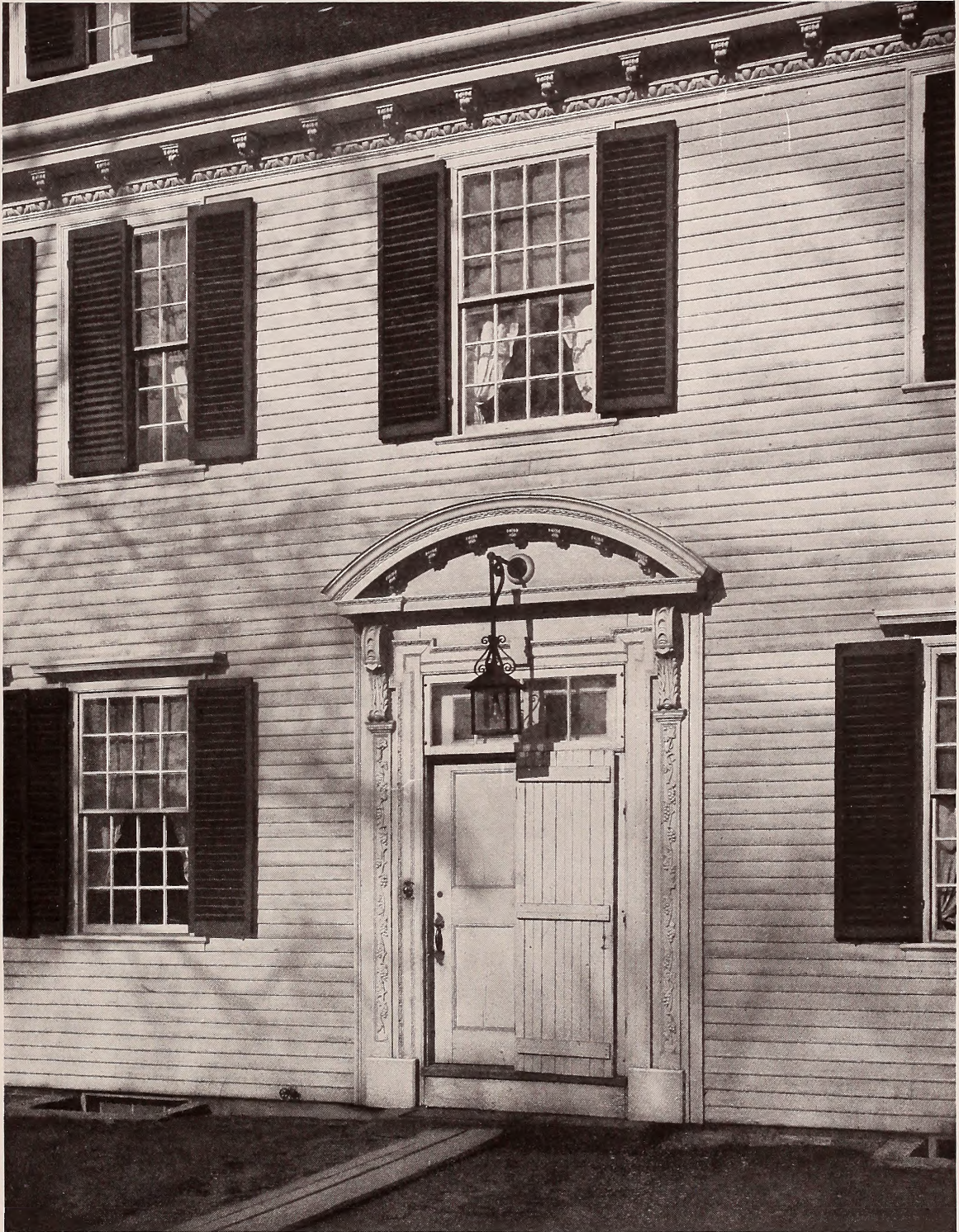
BIGELOW, KENNARD & CO., INC.
LIGHTING FIXTURES
511 WASH. ST., BOSTON, MASS.



PORCH OF THE MIXTER HOUSE ON ACADEMY HILL, NANTUCKET



THE PHELPS HOUSE, ANDOVER HILL, MASS.



THE GOVERNOR WILLIAM DUMMER HOUSE AT BYFIELD, MASS.

BOSTON

NEW YORK

PHILADELPHIA

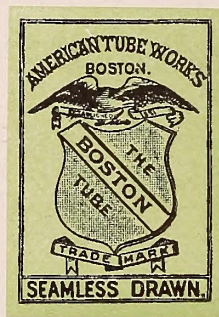
CHICAGO

American Tube Works

ESTABLISHED 1851

10 OLIVER STREET

BOSTON, MASS.



Original and Largest Manufacturers in America of

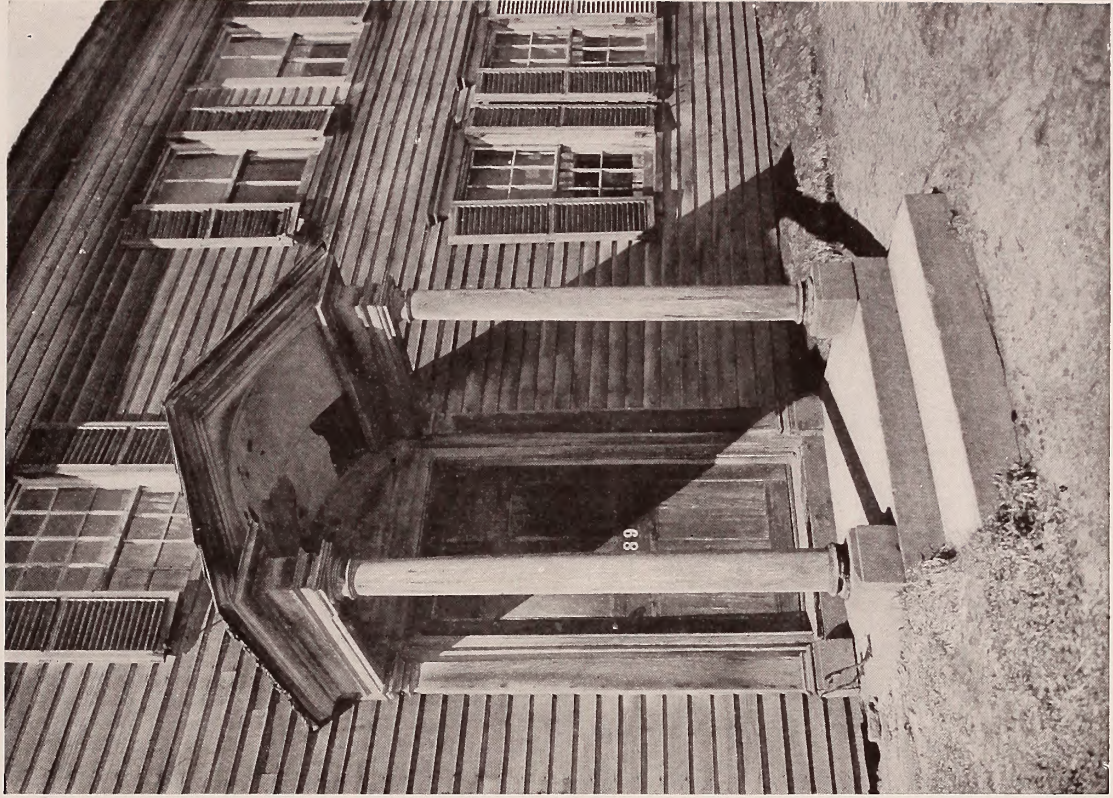
SEAMLESS BRASS PIPE FOR PLUMBING

Guaranteed for Hot or Cold Water. Each and every length of our pipe is stamped
" A. T. W. BOSTON "
on each end, and bears our Green Trade Mark

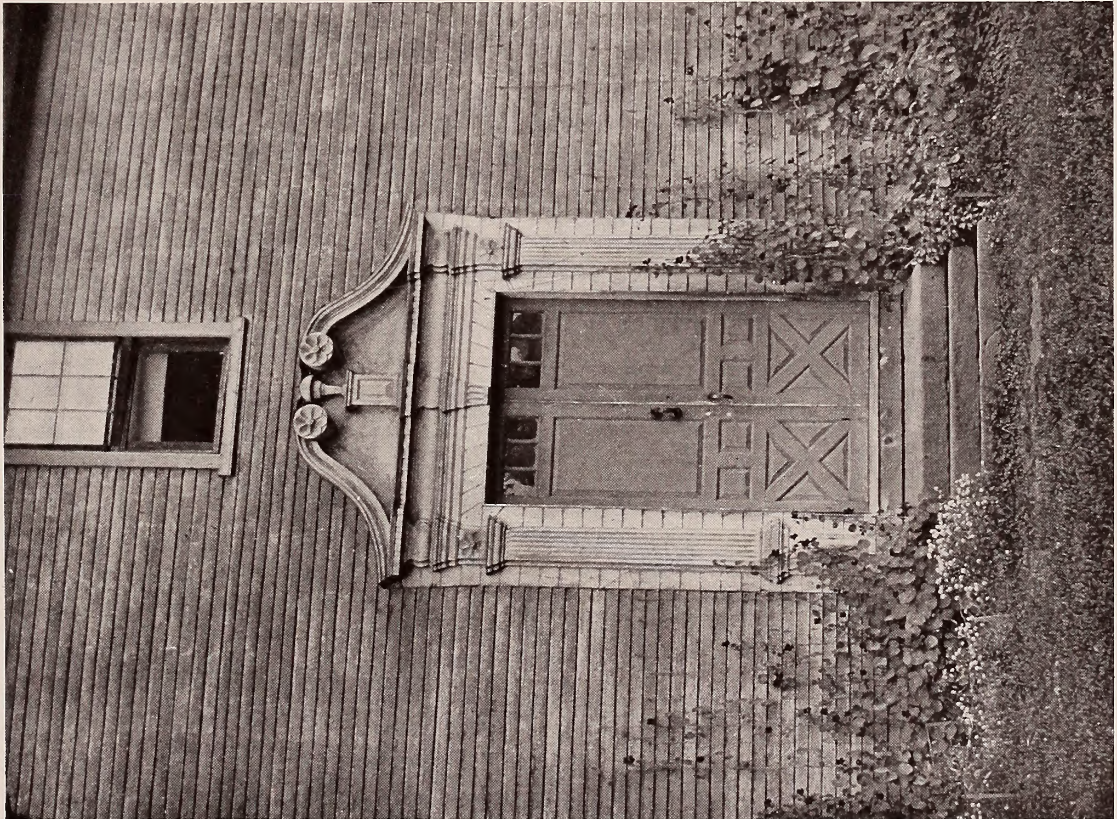
WHEN SPECIFYING THIS PIPE PLEASE CALL FOR

"American Tube Works Brass Pipe"

We shall be pleased to furnish Architects upon application a complete set of our Architects'
Samples of Seamless Brass Pipe, Standard Iron Pipe Sizes, with weight per foot
stamped on each piece, and threaded with Standard Thread



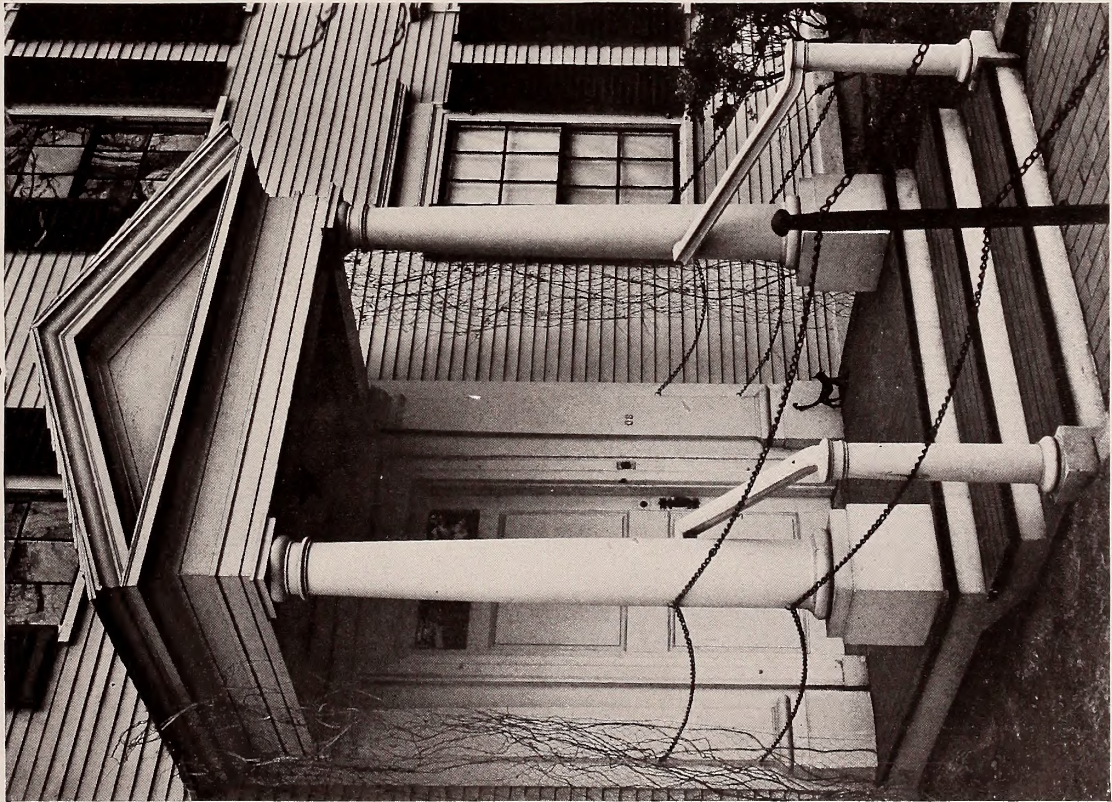
HOUSE AT GLASTONBURY, CONN.



THE WILLIAMS HOUSE, DEERFIELD, MASS., 1750



THE GEORGE ABBOT HOUSE, ANDOVER, MASS., 1796



THE STOREY-WALTERS HOUSE, NEWBURYPORT, MASS.
Built by Samuel Sweet



REREDOS, ST. MARY'S CONVENT, BRIGHTON, MASS.
Joseph Undersee, Architect
Carved by I. Kirchmayer

WILLIAM F. ROSS & CO.

ARTISANS IN

*Interior Woodwork, Fine Furniture
Modeling, Carving, and Plaster Work*

193 TO 207 BRIDGE STREET, EAST CAMBRIDGE, MASS.

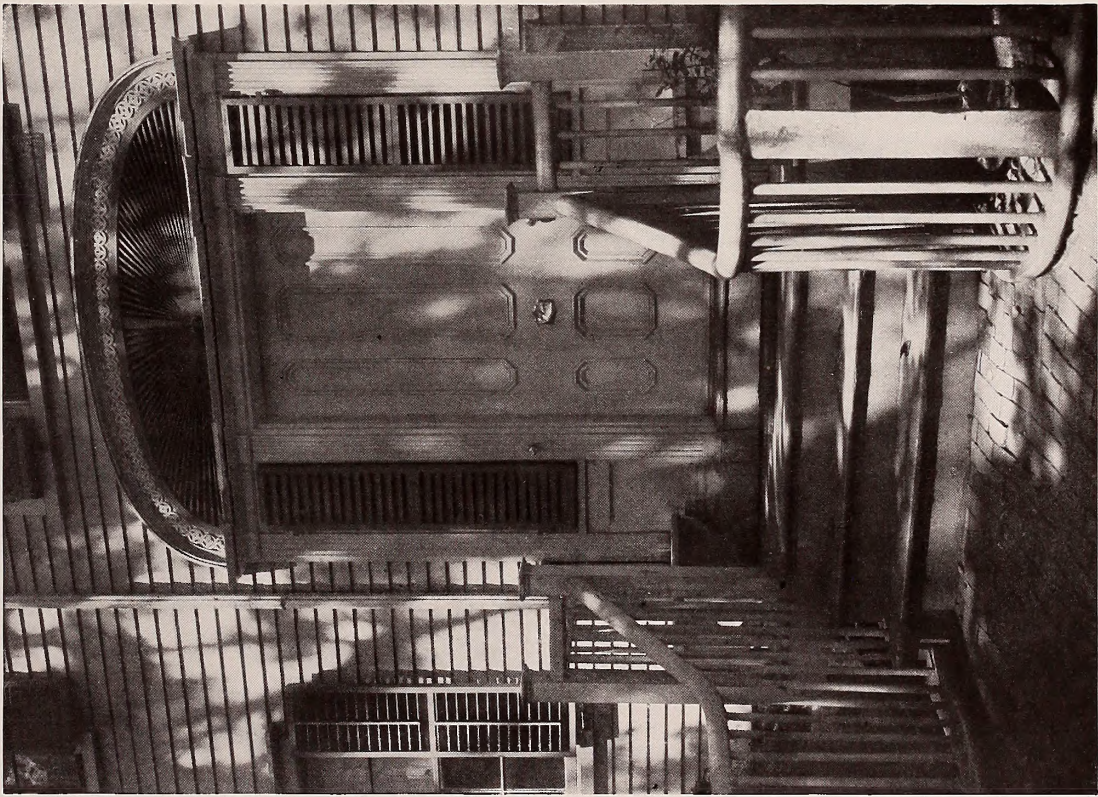
WILLIAM F. ROSS

I. KIRCHMAYER

OTIS T. LOCKHART



THE OLD SWIFT HOUSE, ANDOVER, MASS., 1795



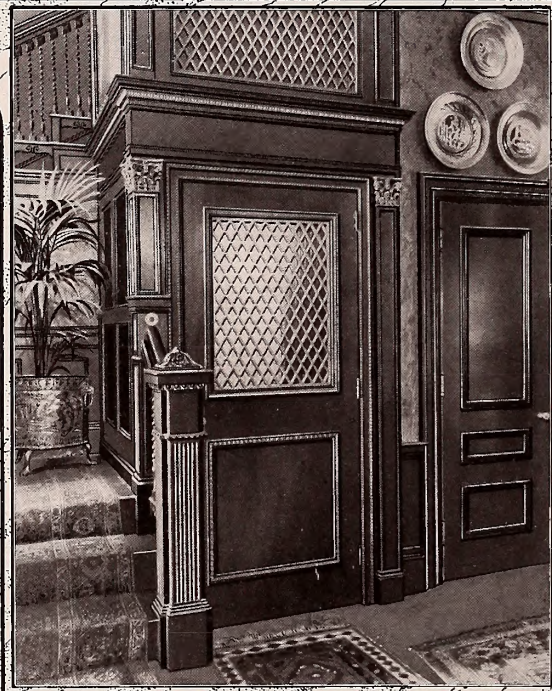
Doorway of the Macy House in Main Street



Doorway of the "Bucknam House" in Main Street

TWO OF THE FAMOUS DOORWAYS OF NANTUCKET

**A. B. SEE
ELECTRIC
ELEVATORS**



1883

1918

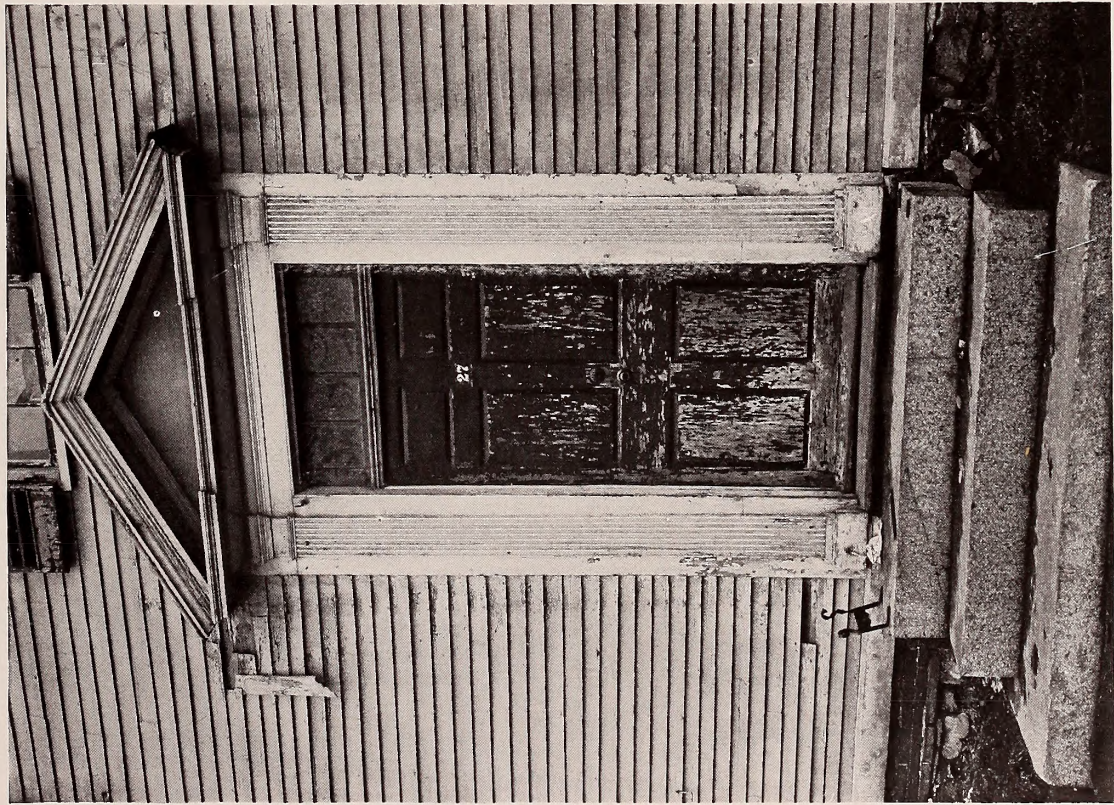
AUTOMATIC HOUSE ELEVATOR

WORKS		OFFICES
JERSEY CITY	NEW YORK	BOSTON OFFICE
NEW JERSEY	BOSTON	
	HARTFORD	
MONTREAL	JERSEY CITY	MINOT
CANADA	PHILADELPHIA	BUILDING
	WASHINGTON	
	BALTIMORE	111 DEVONSHIRE
	CLEVELAND	STREET
	MONTREAL	
	TORONTO	

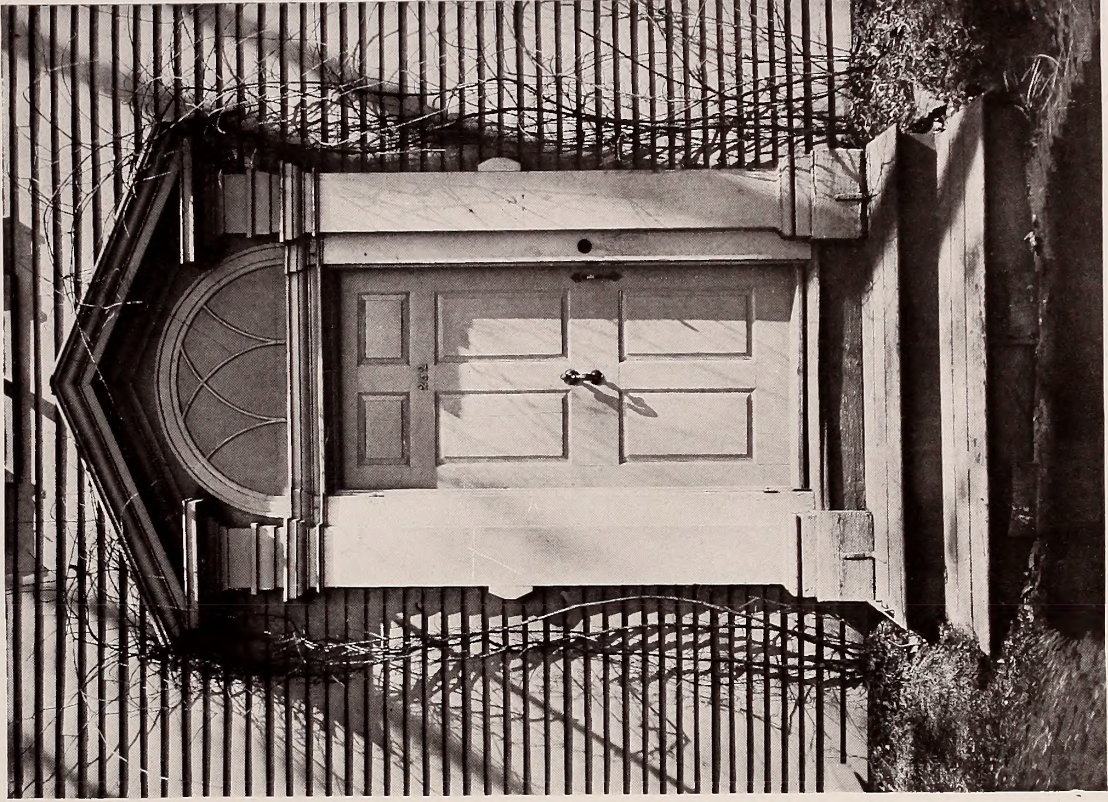
**ELECTRIC ELEVATORS
OF ALL TYPES**



THE PARKER-BORDEN HOUSE, BRISTOL, RHODE ISLAND



HOUSE AT 27 HIGH STREET, NEWBURYPORT, MASS.



THE EMERY HOUSE, NEWBURYPORT, MASS.
Built in 1796 by Thomas Coker



PEABODY-SILSBEE HOUSE, SALEM, MASS., 1797

Photograph by Frank Cousens Art Co.
Copyright by Boston Architectural Club



LANGLEY BOARDMAN HOUSE, PORTSMOUTH, NEW HAMPSHIRE

OLD COLONIAL
DESIGNS *of*
LIGHTING
FIXTURES

never lose their charm. Our designs retain the essential idea, the soft glow light, together with the prismatic ray of the old-time candle and lamp, made for electricity and gas. An assortment so varied as to meet all requirements of decorations.



No. 30117

SHOWROOMS, 181 FRANKLIN STREET
CORNER CONGRESS STREET, BOSTON



McKenney & Waterbury Co.

MANUFACTURERS OF ELECTRIC AND
GAS LIGHTING FIXTURES, BOSTON



GATE POSTS. PIERCE-NICHOL HOUSE, SALEM, MASS. Frank Cousens Art Co., Salem, Mass. McIntire, 1702



TUCKER-RICE HOUSE, SALEM, MASS., 1800

McIntire, Architect

BURDITT & WILLIAMS CO.

ESTABLISHED 1860

HARDWARE

95 SUMMER STREET, BOSTON

One Minute from Chauncy Street Subway

Everything in Hardware to construct and equip a
Building of the simplest or most elaborate style of
Architecture

Our Display Room is second to none in the country
and fitted for the comfort and convenience of our
patrons

Our prices are right; our service designed to be of
the best

REPRESENTATIVES OF
P. & F. CORBIN



STEARNS DOORWAY, 384 ESSEX STREET, SALEM, MASS., 1785



WELL-MEEK HOUSE, SALEM, MASS., 1780

Photograph by Frank Cousens Art Co.
Copyright by Boston Architectural Club

OTIS ELEVATORS

OTIS reputation, carried everywhere through many years of costly and painstaking adherence to the highest engineering and manufacturing standards, is a guarantee of Otis Elevator quality.

Wherever elevators are used the Otis name stands for sureness, strength, safety, paramount serviceability. Architects are thus enabled to specify Otis installations with the comforting knowledge that their most exacting requirements will be scrupulously fulfilled.

The illustration shows the Oliver Ditson Building, Boston; Steinle, Townsend & Haskell and C. Howard Walker & Son, Associated Architects.

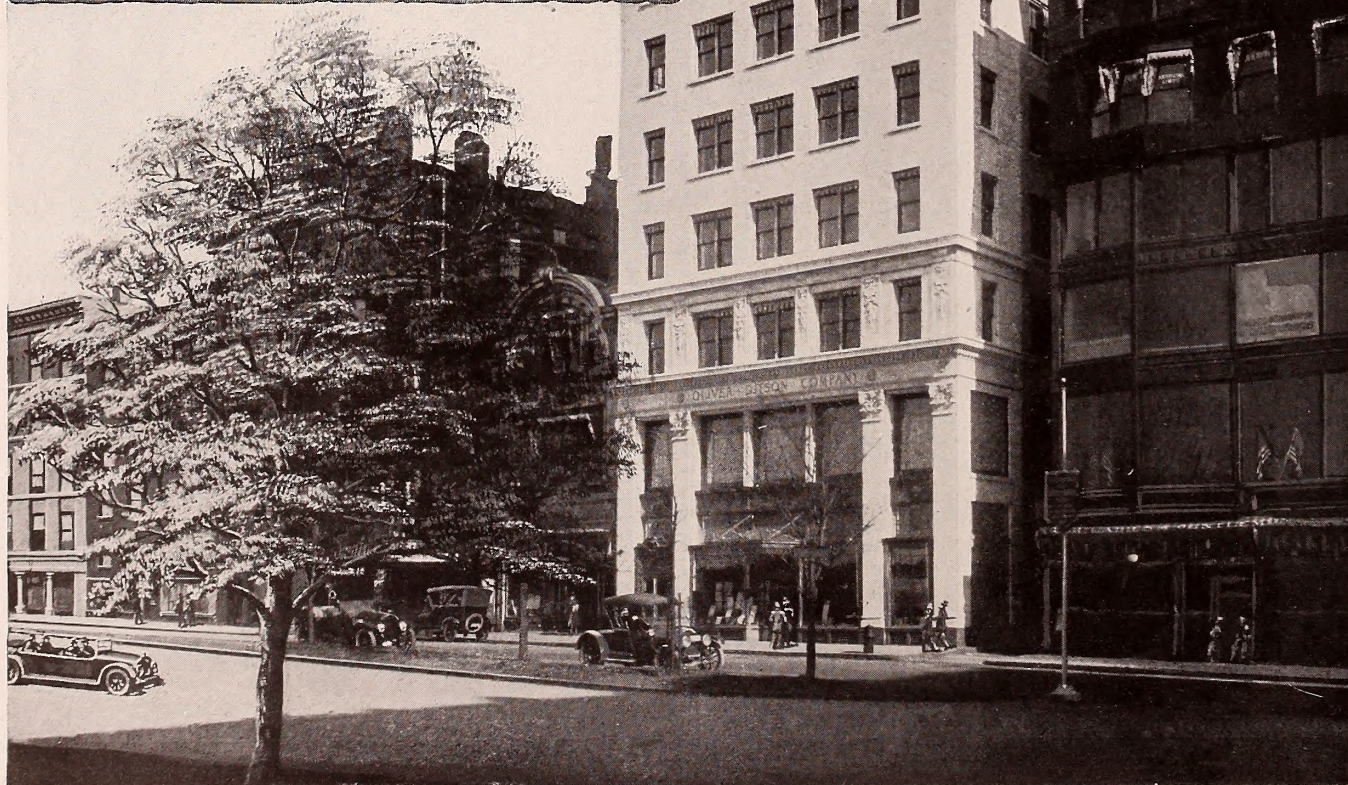
Equipped with:

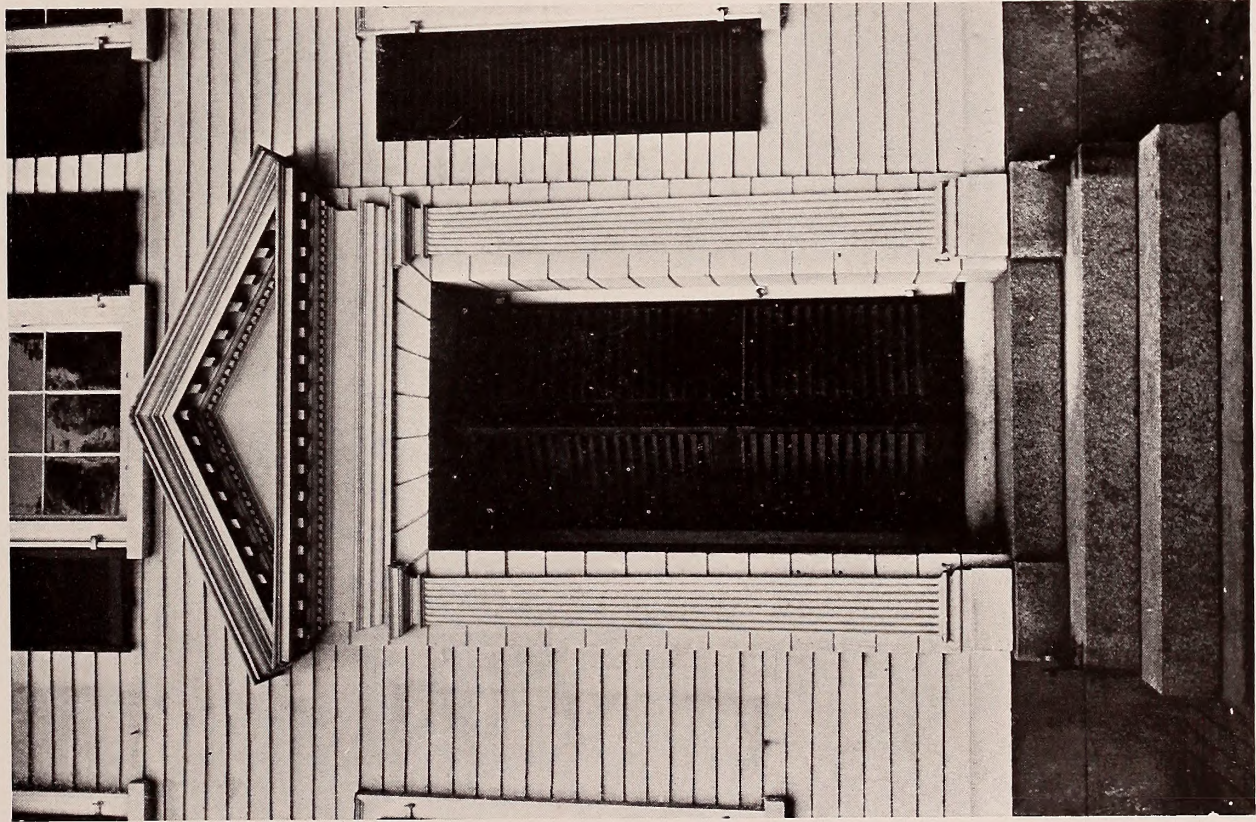
- 4 Otis Worm Gear Traction Passenger Elevators.
- 1 Otis Worm Gear Traction Combination Passenger and Freight Elevator.

Otis Elevator Company

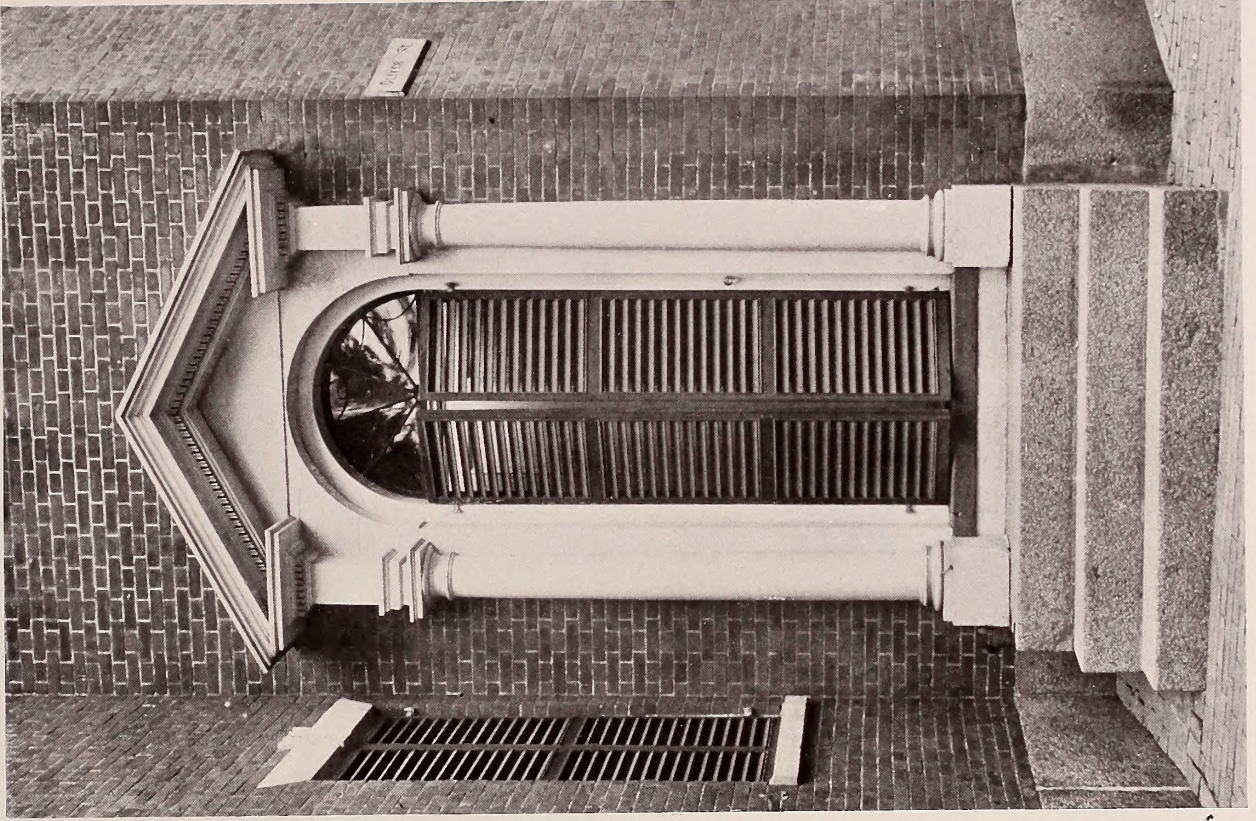
34-35 India Street, Boston

Offices in All Principal Cities of the World

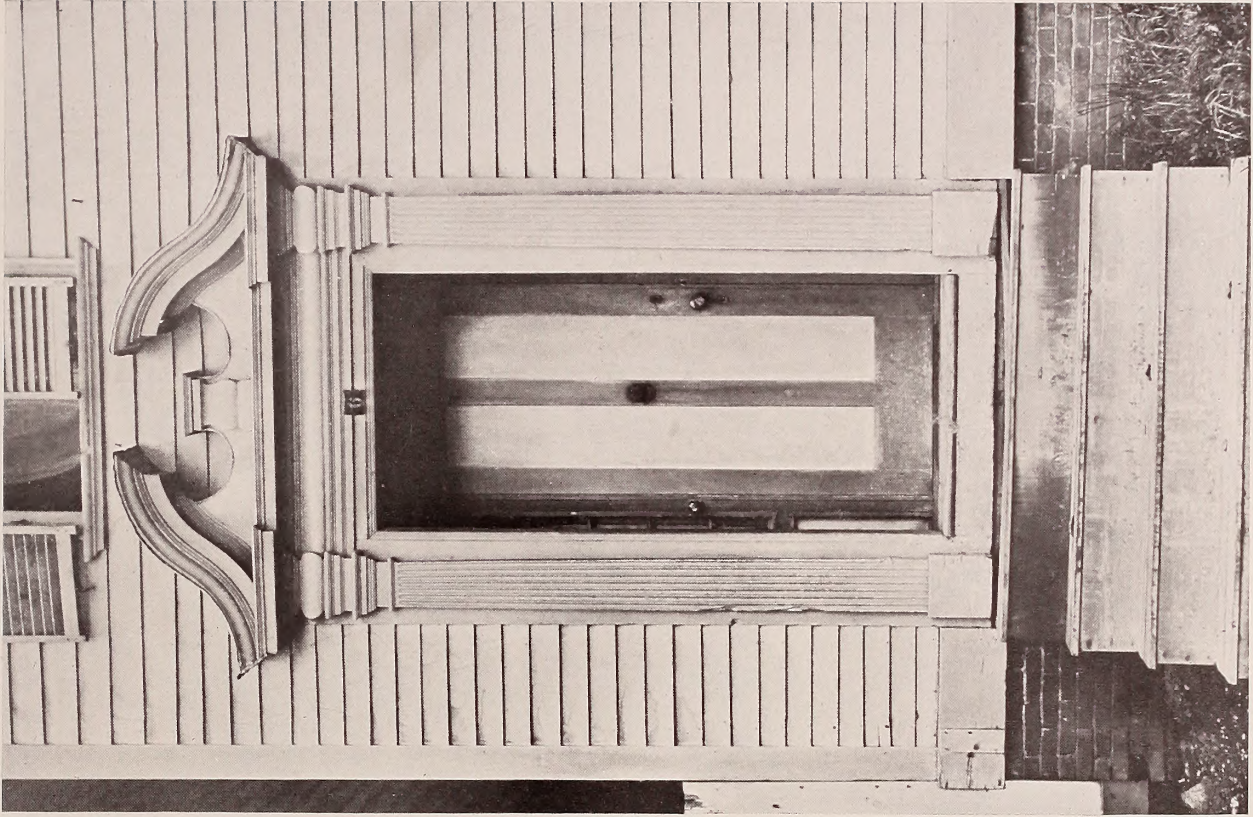




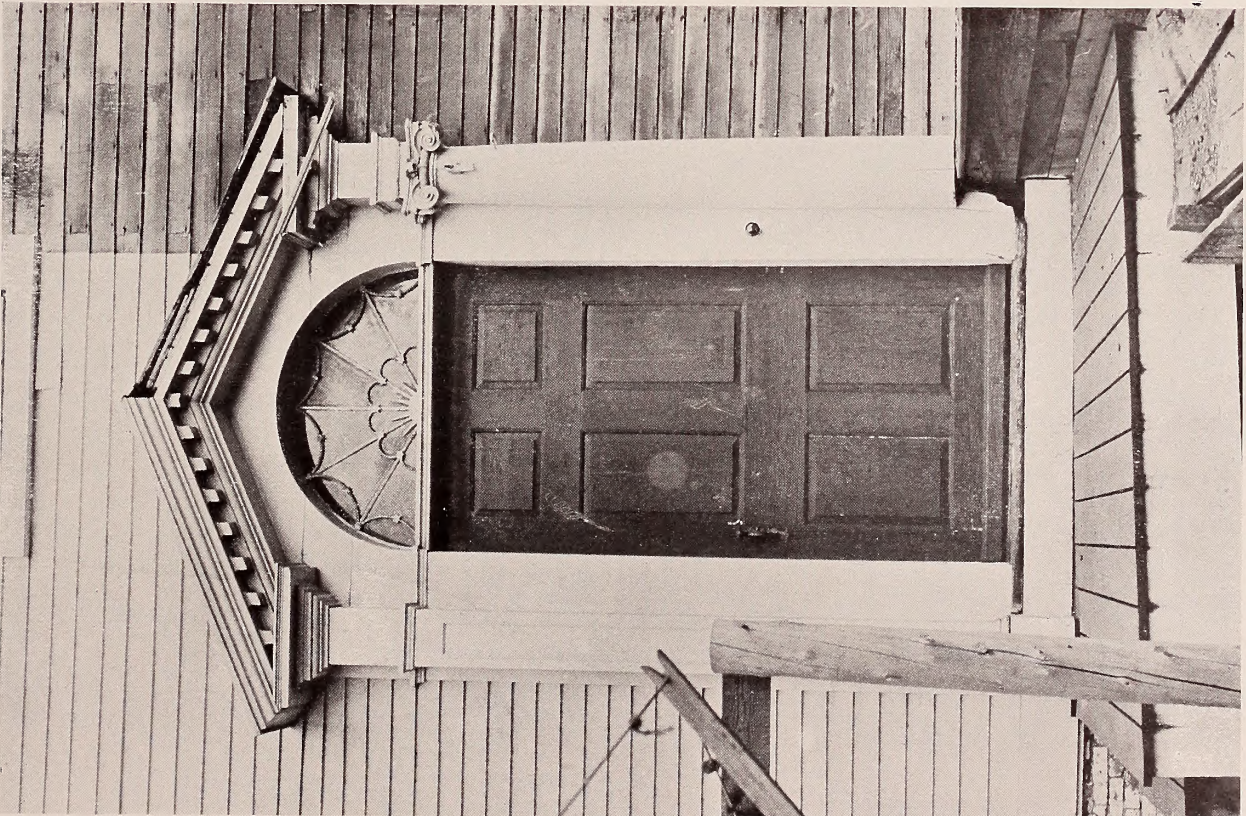
LINDALL-GIBBS HOUSE, SALEM, MASS., 1773
Photograph by Frank Cousins Art Co. Copyright by Boston Architectural Club



LORD HOUSE, SALEM, MASS., 1818
Photograph by Frank Cousins Art Co.



DOWNING STREET, SALEM, MASS., ABOUT 1750
Photograph by Frank Cousins Art Co. Copyright by Boston Architectural Club



DERBY STREET, SALEM, MASS. TWO ORDERS STOOD THIS WAY
FOR ABOUT 21 YEARS. HOUSE ERECTED BEFORE 1780
Photograph by Frank Cousins Art Co.

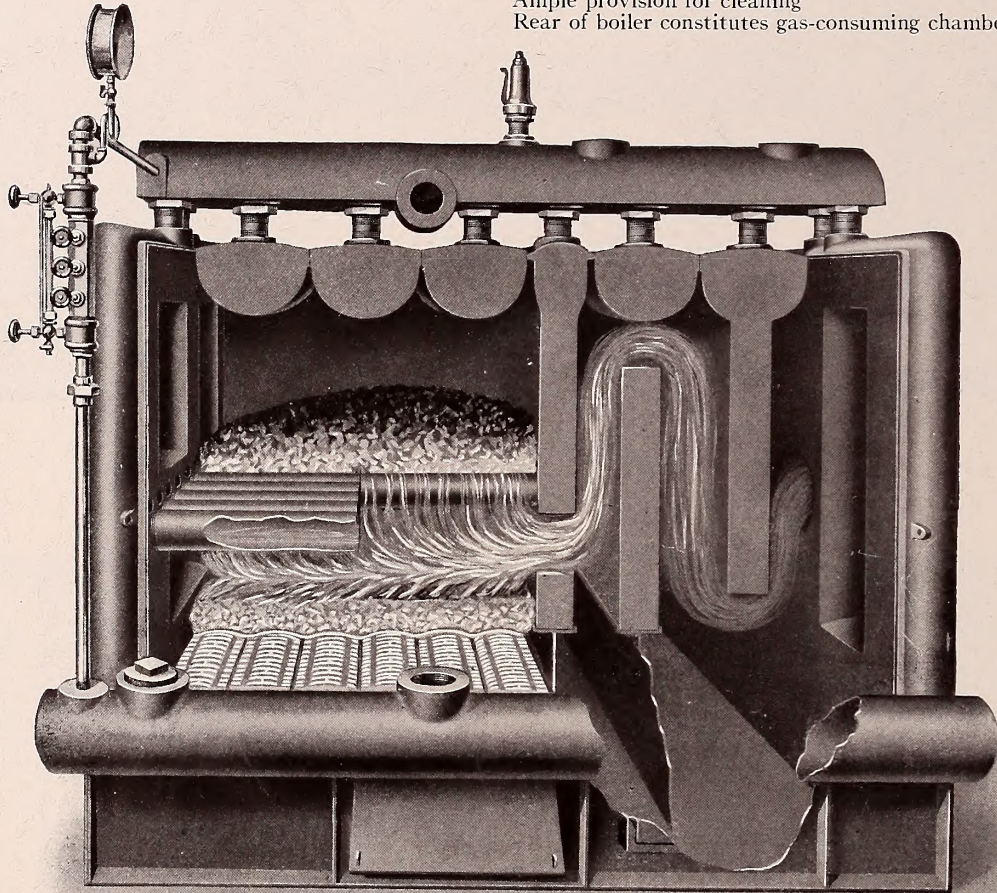


{ DOWN DRAFT }
{ SMOKELESS } **BOILERS**

Stand pre-eminently in the Lead for Efficiency
and Utmost Economy

Capacities 1250 to 10,000 ft. for Steam

They burn all grades of soft coal
Maintain positively steady water line
Are of header construction with large nipple connections
Have generous steam spaces
Ample provision for cleaning
Rear of boiler constitutes gas-consuming chamber



Illustrating No. 1053

Send for Circulars

GURNEY HEATER M'FG COMPANY.

Head Office: BOSTON, MASS.

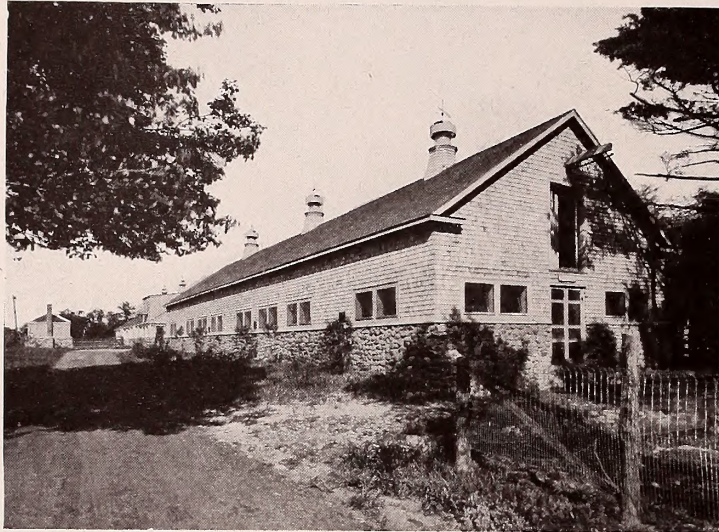
Branches: New York, Philadelphia, Washington



DERBY-WARD HOUSE, DERBY STREET, SALEM, MASS., 1738



ANDREW SAFFORD HOUSE, SALEM, MASS., 1818



THE OAKS FARM, COHASSET, MASS.

Modern Sanitary Farm Buildings

DESIGNED AND ERECTED BY

W. A. MURTFELDT COMPANY

161 Devonshire St.

BOSTON, MASS.

Roofing and Sheet-
Metal Work

Asphalt

Granolithic

Concrete Con-
struction

Waterproofing

MORANDI-PROCTOR COMPANY



DESIGNERS AND MANUFACTURERS OF

Cooking Apparatus

FOR

Hotels, Restaurants, Clubs,
Institutions, and Steamships

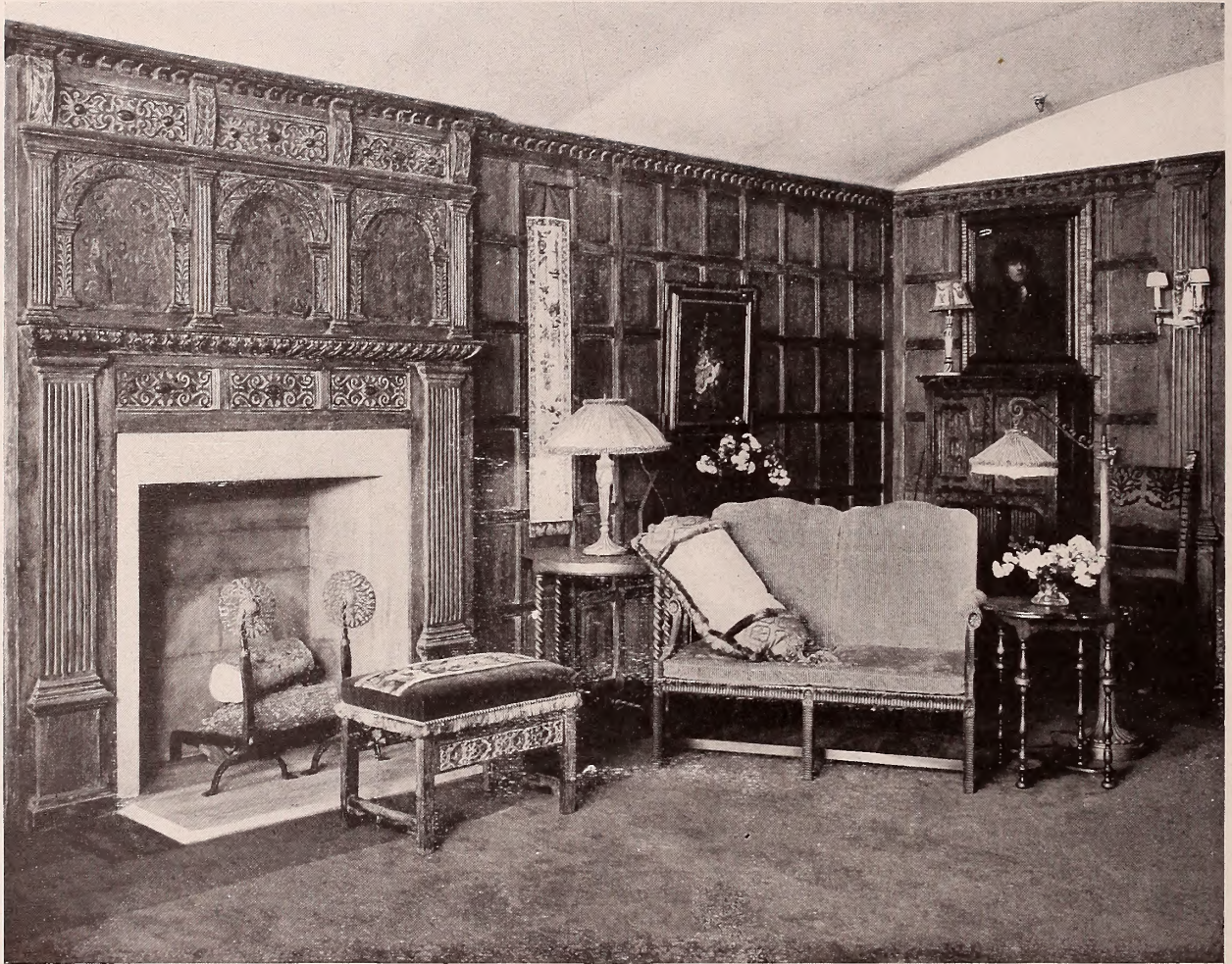
86 WASHINGTON STREET

ADAMS SQUARE

BOSTON, MASS.



THE SMITH HOUSE, WISCASSET, MAINE



The rare and unusual mantel and paneling are among the many interesting studies in this **Old English Room**, imported and installed by the PAINE FURNITURE COMPANY of Boston



COOK OLIVER HOUSE, FEDERAL STREET, SALEM, MASS., 1797

McIntire, Architect

HENRY CUMMINGS & COMPANY

185 DEVONSHIRE STREET, BOSTON

Building Contractors

for the new

BOSTON STATE HOSPITAL

(MALE INFIRMARY GROUP)

now being erected at Mattapan, Mass., for the

COMMONWEALTH OF MASSACHUSETTS

KENDALL, TAYLOR, & CO.

ARCHITECTS

93 FEDERAL ST., BOSTON



NICHOLS HOUSE, SALEM, MASS., 1782

Photographed by Frank Cousins Art Co.



NEWEL POST, ALLEN HOUSE, SALEM, MASS.



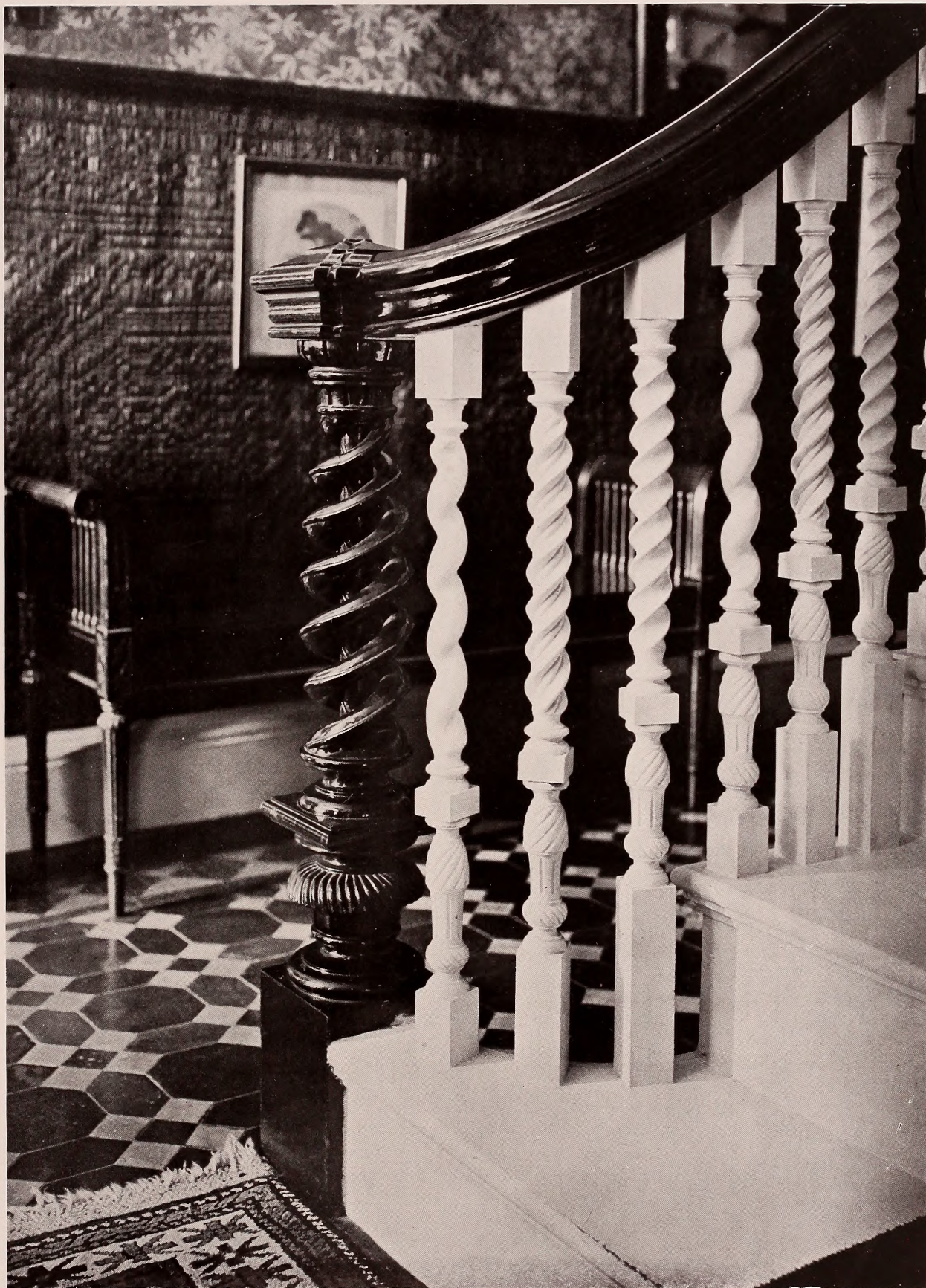
HALL OF THE HARRINGTON HOUSE, MONROE STREET, SALEM, MASS., 1761



BIGELOW, KENNARD & CO., INC.
LIGHTING FIXTURES
511 WASH. ST., BOSTON, MASS.



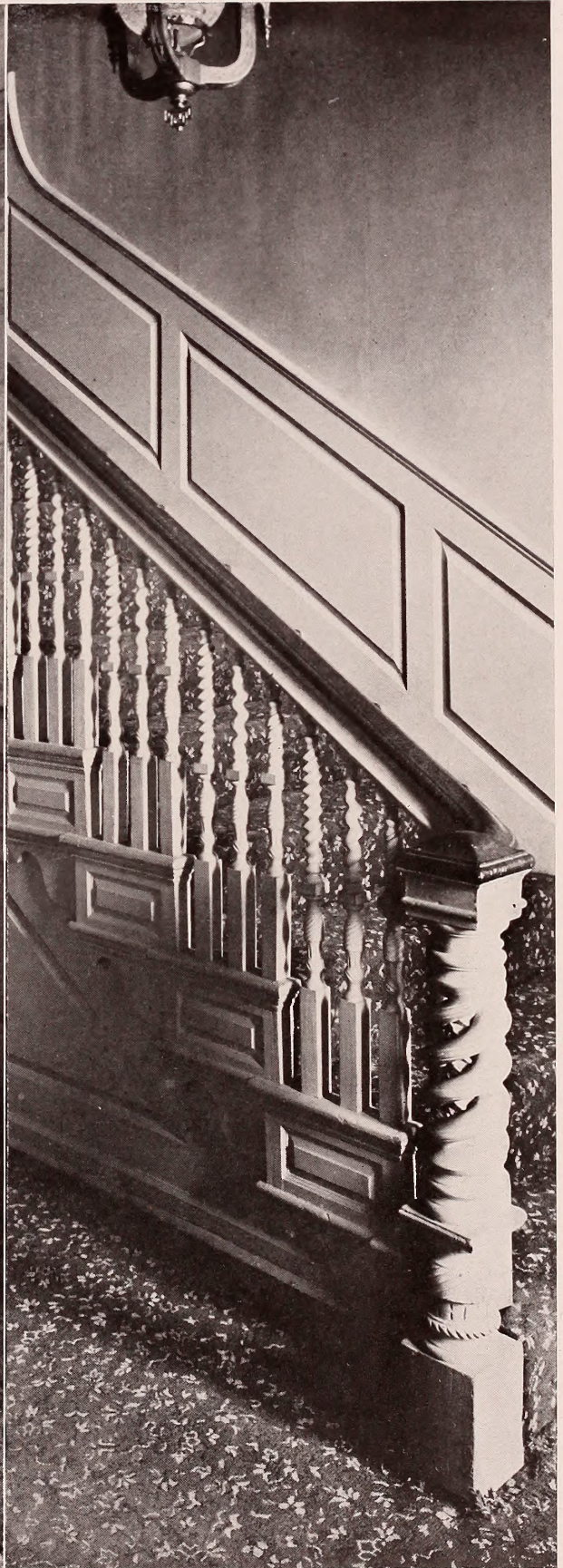
HALL, NEWEL IN DETAIL, "THE LINDENS," FRANCIS PEABODY, DANVERS, MASS., 1745



FRONT HALL NEWEL, "OAK HILL," MR. J. C. ROGERS' HOUSE, PEABODY, MASS., 1800 McIntire, Architect

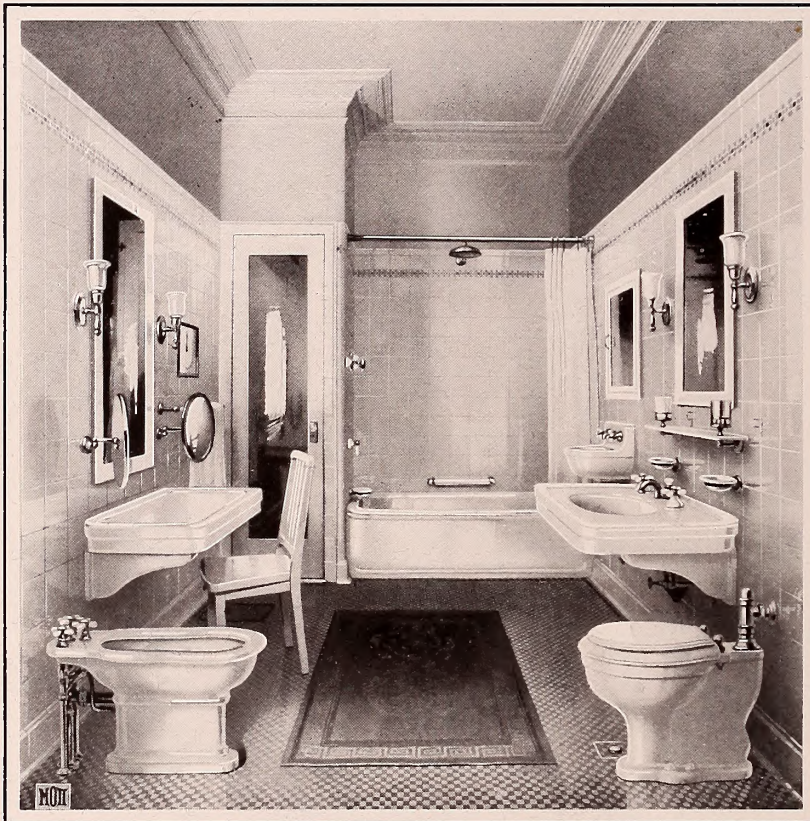


NORMAN STREET, SALEM, MASS., BEFORE 1760



JOHN DERBY MANSION, SALEM, MASS., 1767

MOTT PLUMBING

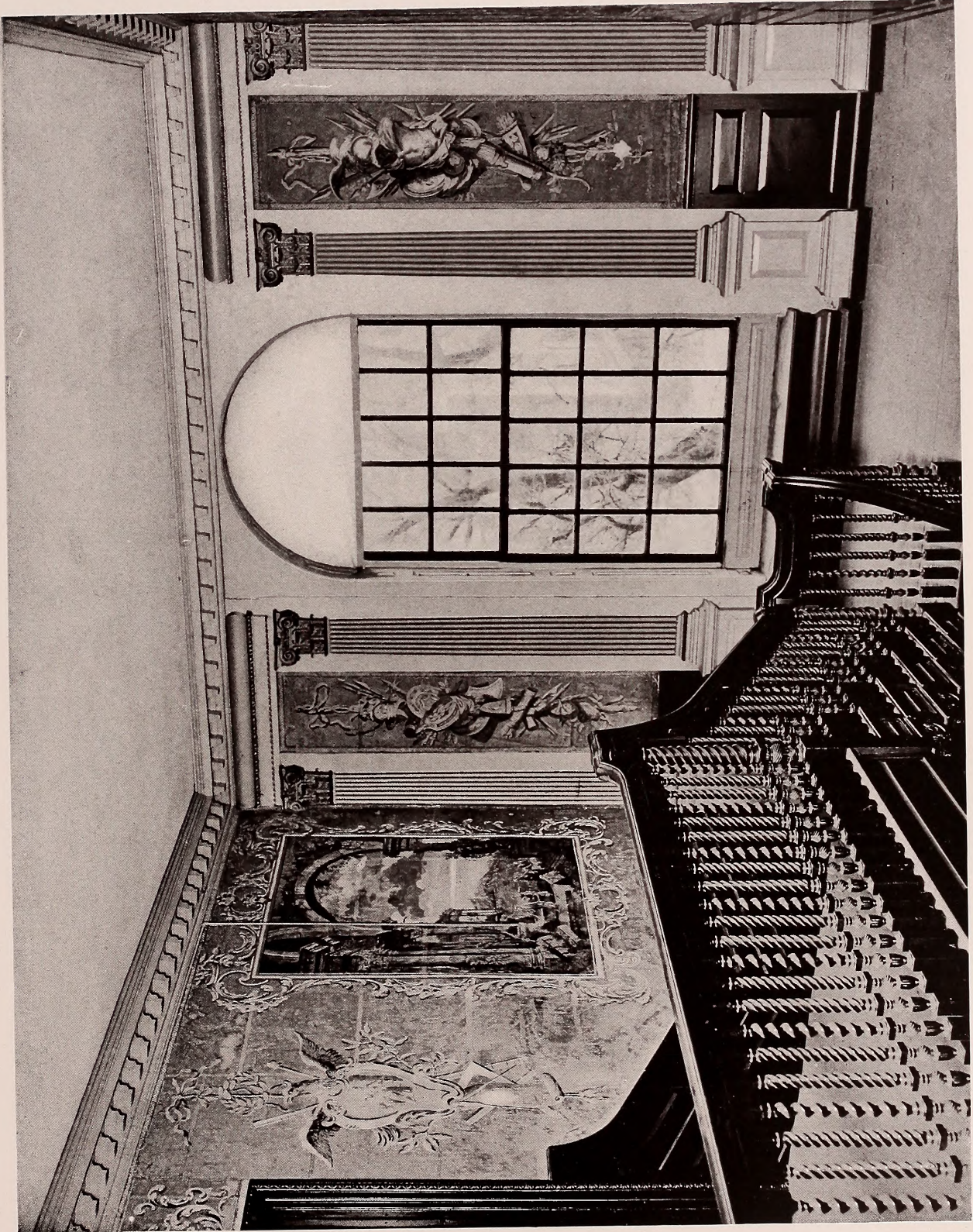


THE J. L. MOTT IRON WORKS

41-47 PEARL STREET

BOSTON

GENERAL OFFICES AND PLANT, TRENTON, N. J.



HALL PAPER AND BALUSTRADE, JEREMIAH LEE MANSION, MARBLEHEAD, MASS., 1768

PENNELL, GIBBS, AND QUIRING COMPANY
PAINTERS AND DECORATORS
15A BEACON ST., BOSTON, MASS.



IMPORTED AND CUSTOM MADE FURNITURE



DOOR TO STUDY, BENJAMIN PRESCOTT HOUSE, PEABODY, 1713

STANDARD PLATE GLASS COMPANY

MANUFACTURERS ∴ JOBBERS

American Window Glass

Picture Glass

Prism Glass

Ornamental and Skylight Glass

Polished Plate Glass . Mirrors

Beveled Plate Glass

Polished Wired Glass

Bent Glass

COPPER STORE-FRONT CONSTRUCTION

26-30 SUDBURY STREET

61-63 PORTLAND STREET

BOSTON, MASS.

WORCESTER

NEW YORK

J. W. BISHOP CO.
BUILDERS

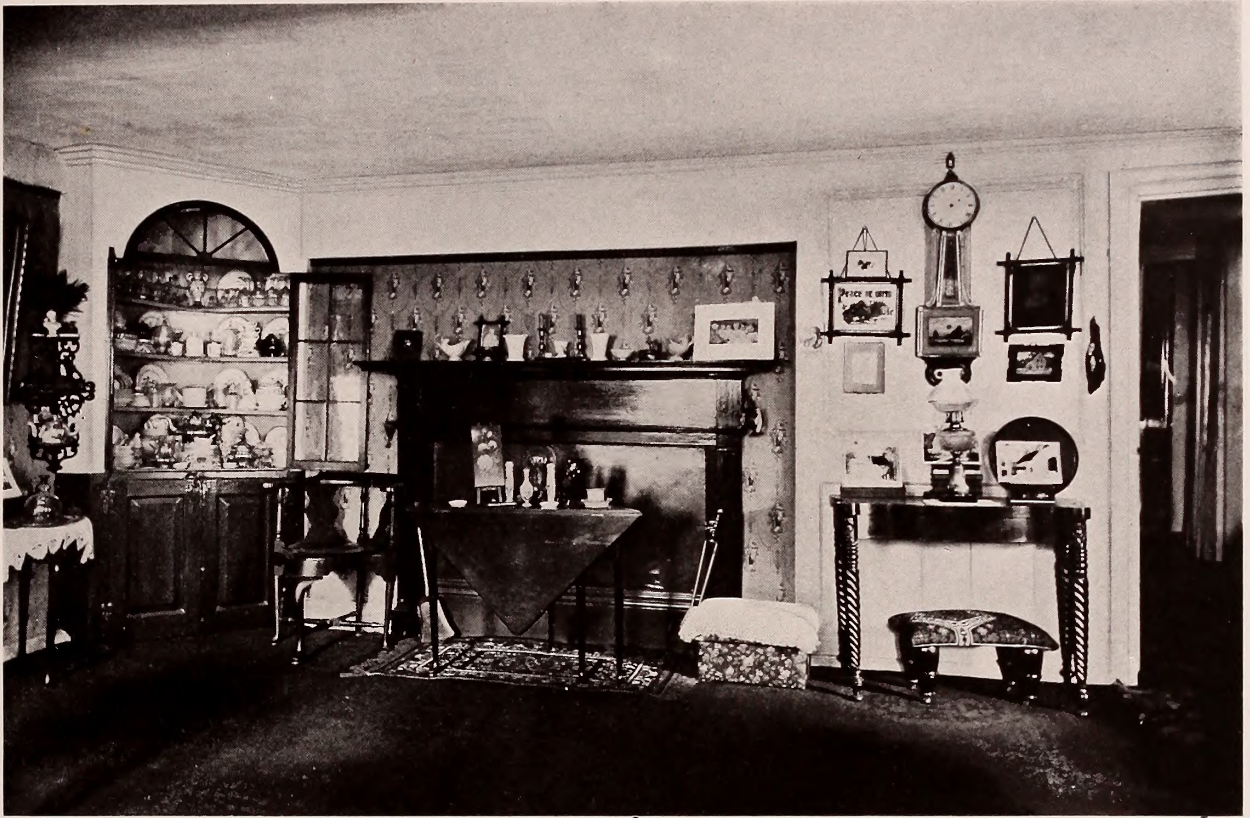
PROVIDENCE

BOSTON

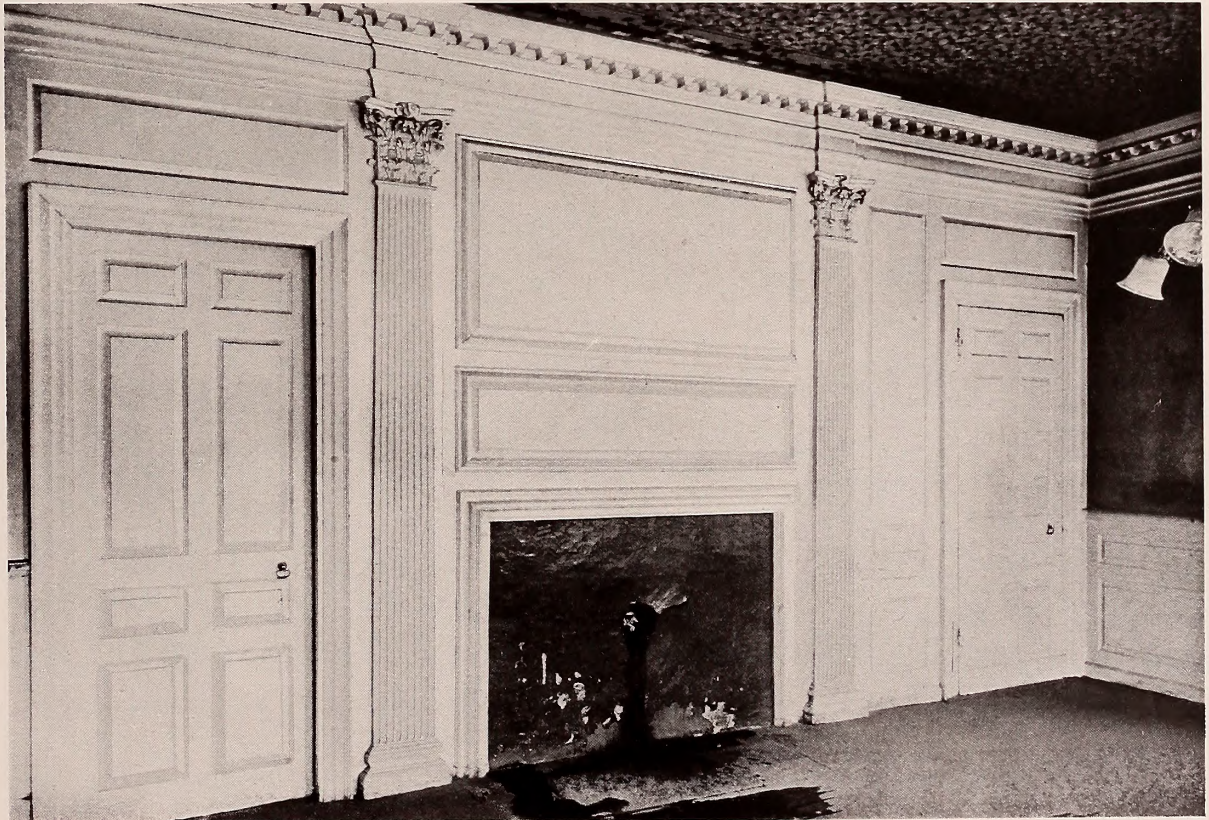


BARTON HOUSE, SALEM, ABOUT 1750

Photograph by Frank Cousins Art Co.
Copyright by Boston Architectural Club



MARBONNE HOUSE, SALEM, MASS., 1618



LEE MANSION BANK BUILDING, ROOM, FIRST FLOOR, RIGHT OF ENTRANCE, 1768

DAVID F. BURNS

WALTER G. BURNS

GEORGE W. SEMPLE

WALTER G. BURNS & CO.
CONTRACTORS AND BUILDERS

44 BROMFIELD STREET
BOSTON, MASS.

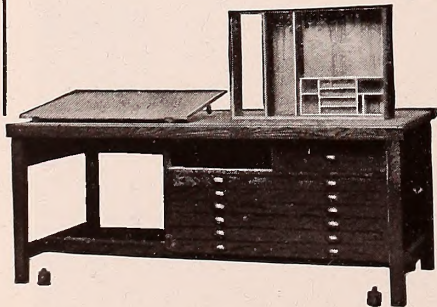
PUBLICITY BUILDING

YOUR DRAFTSMEN

Can do MORE and BETTER work if provided with ECONOMY DRAWING
TABLES and ECONOMY FILING CABINETS

SPAULDING-MOSS CO.

NEW ENGLAND DISTRIBUTORS



We carry an extensive line of DRAFTING ROOM SUPPLIES and have the largest BLUE PRINT and BLUE PRINT PAPER Manufacturing Plant in New England

CATALOGUE ON REQUEST

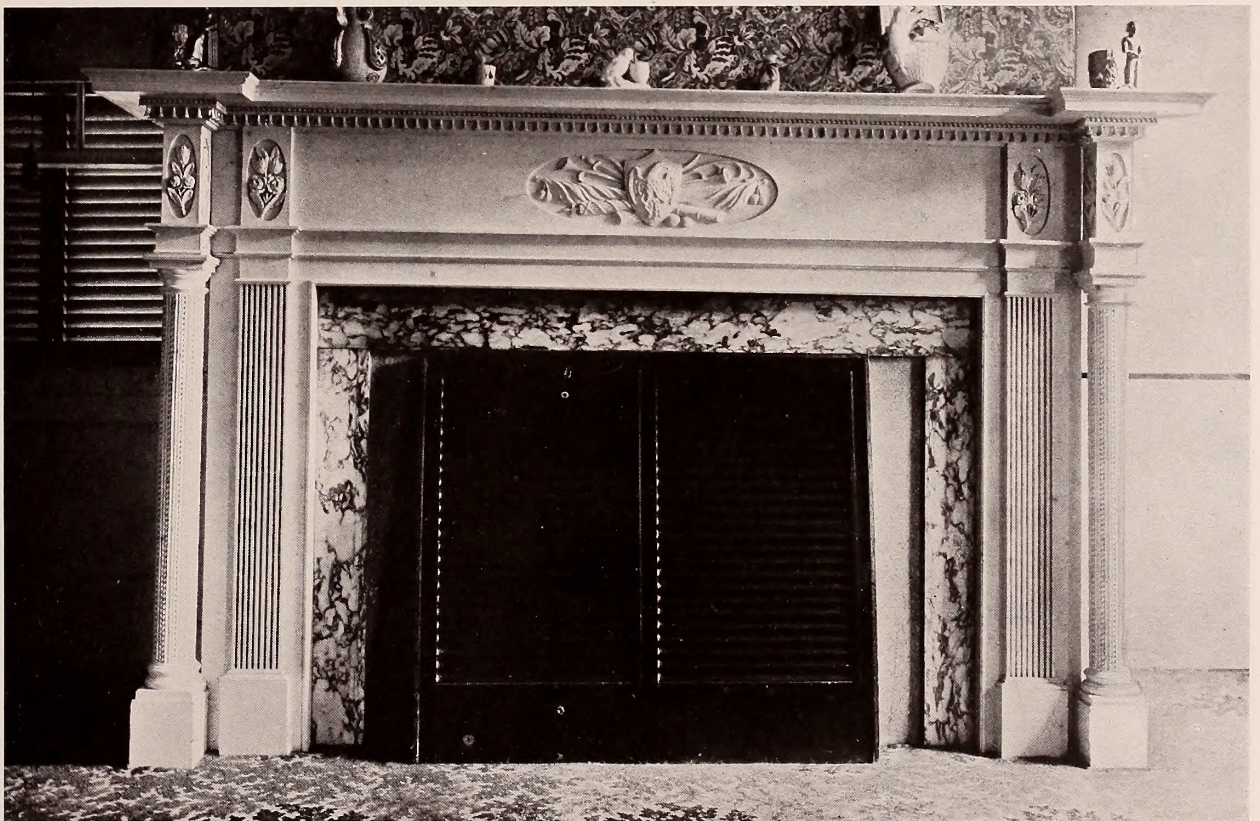




PICKMAN-SHREVE HOUSE, SALEM, MASS., 1816



MANTEL IN PARLOR, CROWNINSHIELD-DEVEREAUX HOUSE, SALEM, MASS., 1805 McIntire, Architect



FRONT OF PARLOR MANTEL, 12 ELM STREET, SALEM, MASS., 1800 McIntire, Architect

E. B. BADGER & SON, INC.

ROOFING
SHEET-METAL WORK
METAL WINDOWS
METAL DOORS

75 PITTS STREET

BOSTON, MASS.

DEXTER BROTHERS
ENGLISH SHINGLE STAIN

DEXTER BROTHERS
ROMAN CALX
Flat Wall Finish

DEXTER BROTHERS
PETRIFAX
Brick and Cement Coating

DEXTER BROTHERS COMPANY

105 BROAD STREET, BOSTON, MASS.

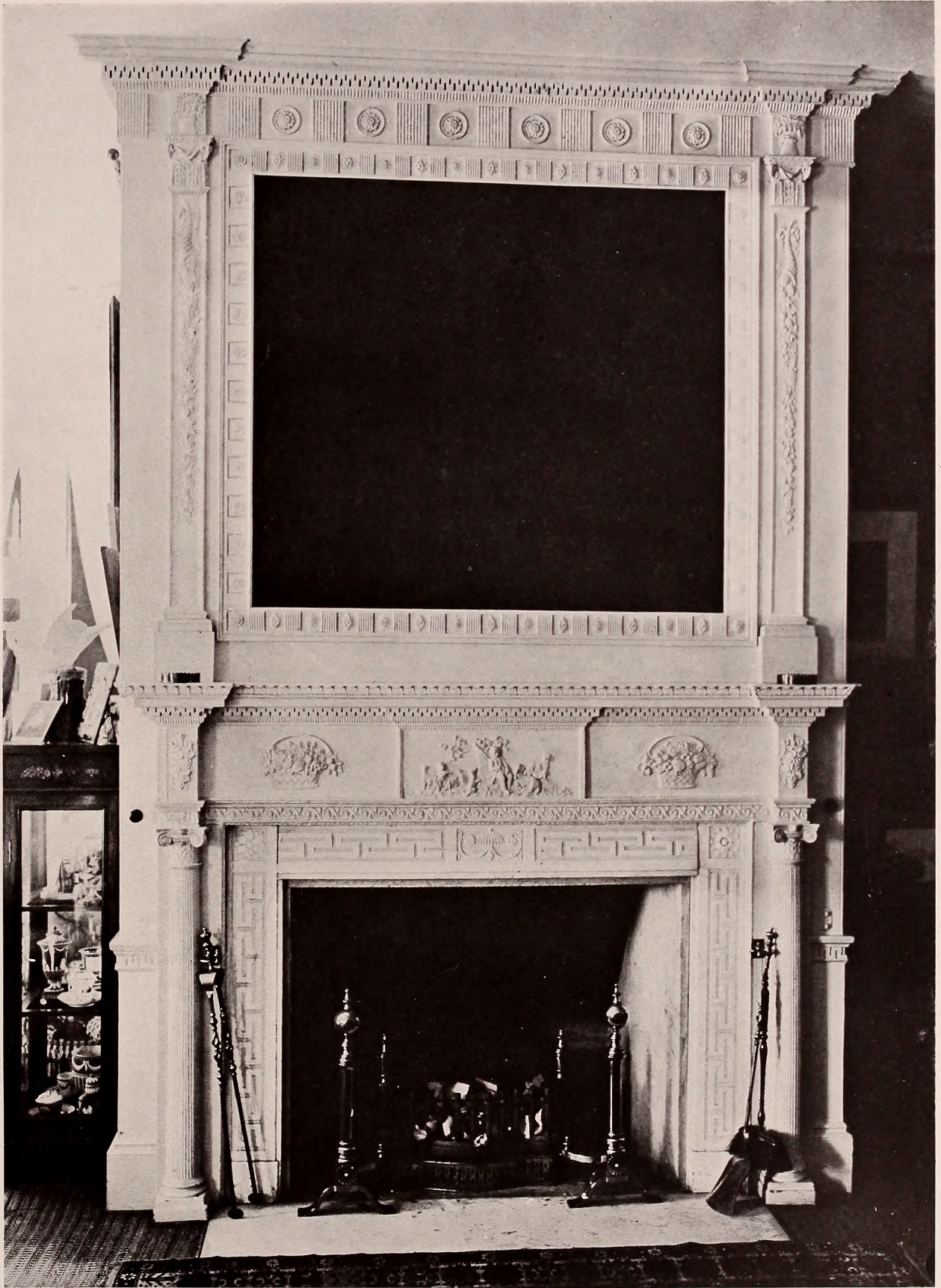


PICKMAN STREET, SALEM, MASS., CAST IRON FIRE RACK, 1668

McIntire, 1800

Photograph by Cousens Art Co.

Copyright by Boston Architectural Club



"OAK HILL," PEABODY, MASS. McIntire, Architect, 1800

Photograph by Frank Cousens Art Co.
Copyright by Boston Architectural Club

LALLY PATENT COLUMNS

Are specified by leading architects and engineers
all over the United States for all kinds of buildings.

LALLY COLUMNS are the most fireproof building support made. Cheaper
than Cast Iron or Steel, and can be procured in less than one-fourth the time.

LALLY COLUMNS

Are the latest thing in up-to-date Mill Construction

WRITE FOR CATALOGUE AND U. S. ARSENAL TESTS

UNITED STATES COLUMN CO.
CAMBRIDGE, MASS.

WEBSTER SYSTEMS OF STEAM HEATING

are installed in many of the most prominent Manufacturing Plants, Colleges, Schools, Office Buildings, Apartment Houses, Residences, Churches, Hospitals, Hotels, Theaters, and other types of buildings throughout the New England States. More than 11,000 successful installations over the entire country.

The Webster Vacuum System utilizes exhaust steam, live steam, or a combination of the two. The **Webster Modulation System** is for buildings where low pressure, or vapor, is used. Old buildings can be "Websterized," often at comparatively small cost.

Webster Syphon Traps are placed at radiator returns and at drip points. The heat in each department or room can be controlled by **Webster Modulation Valves**. Perfect circulation of steam is assured; water-hammering, air-binding, excessive coal bills, and other objectionable features are overcome.

"The Webster Guarantee is the Owner's Insurance Policy"

Webster Engineering Service is the result of thirty years' experience. We have made fuel conservation a life-study. A corps of heating experts and thirty branch offices are maintained.

Write for Catalogue V-65

WARREN WEBSTER & COMPANY

MANUFACTURERS OF

Webster Systems of Steam Heating
Webster Feed Water Heaters

Webster-Lea Heater Meters
Webster Steam and Oil Separators

Webster Exhaust Steam Specialties

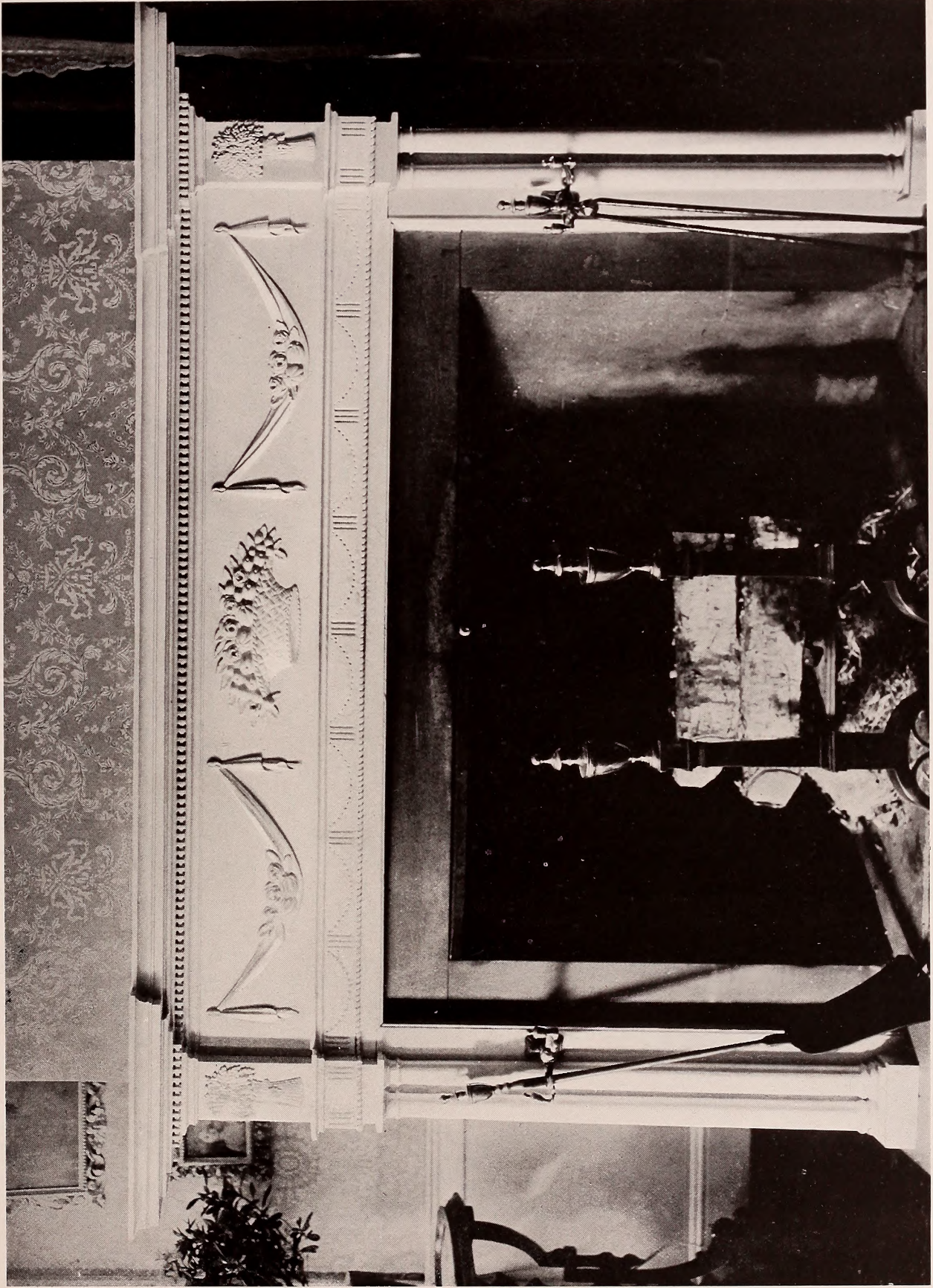
MAIN OFFICE
AND WORKS

CAMDEN, NEW JERSEY

POINT AND
PEARL STS.

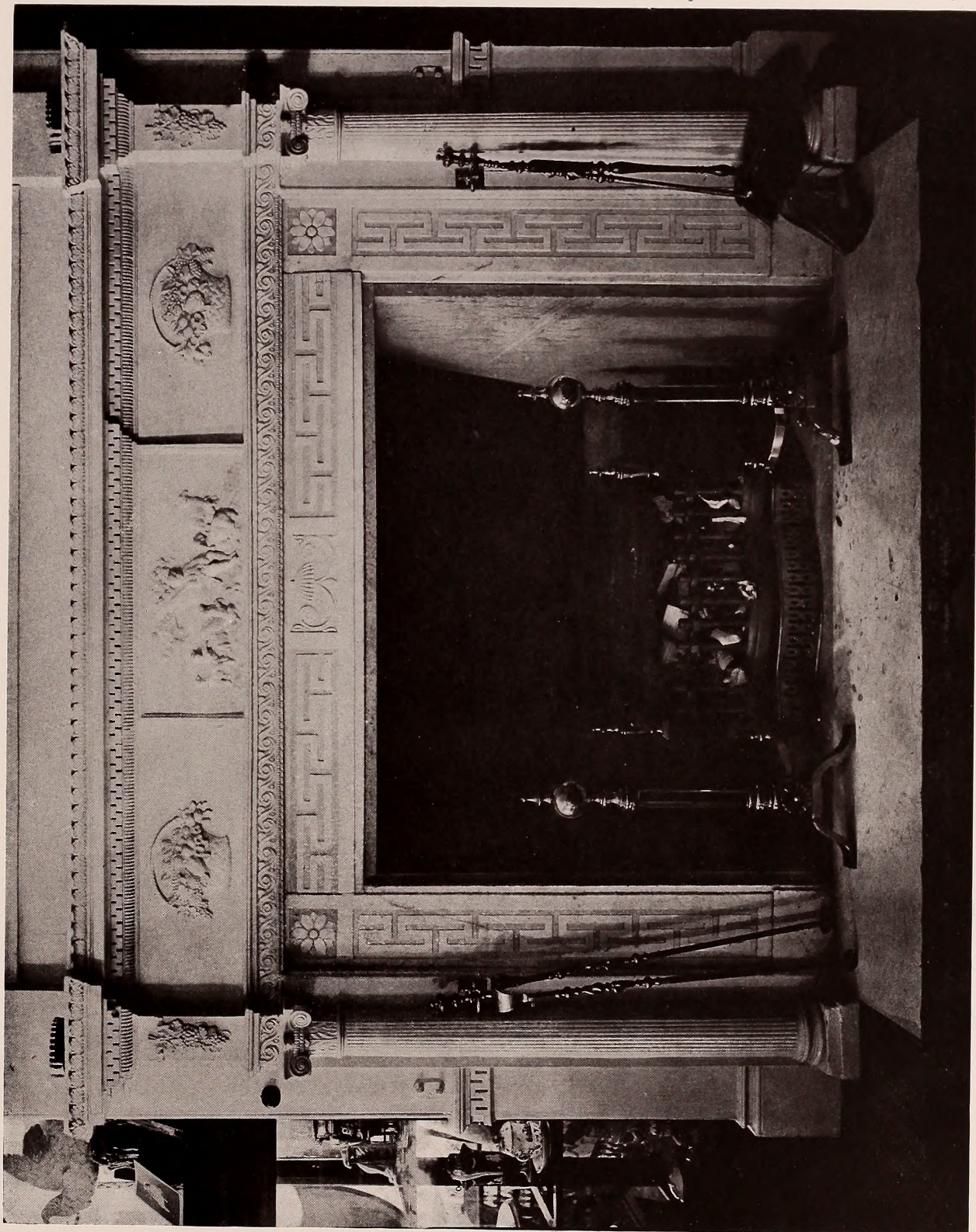
Established 1888. Branch Offices in Thirty Cities
Fuel Conservation Specialists for Thirty Years

Boston Office: 1108 Penn Mutual Building



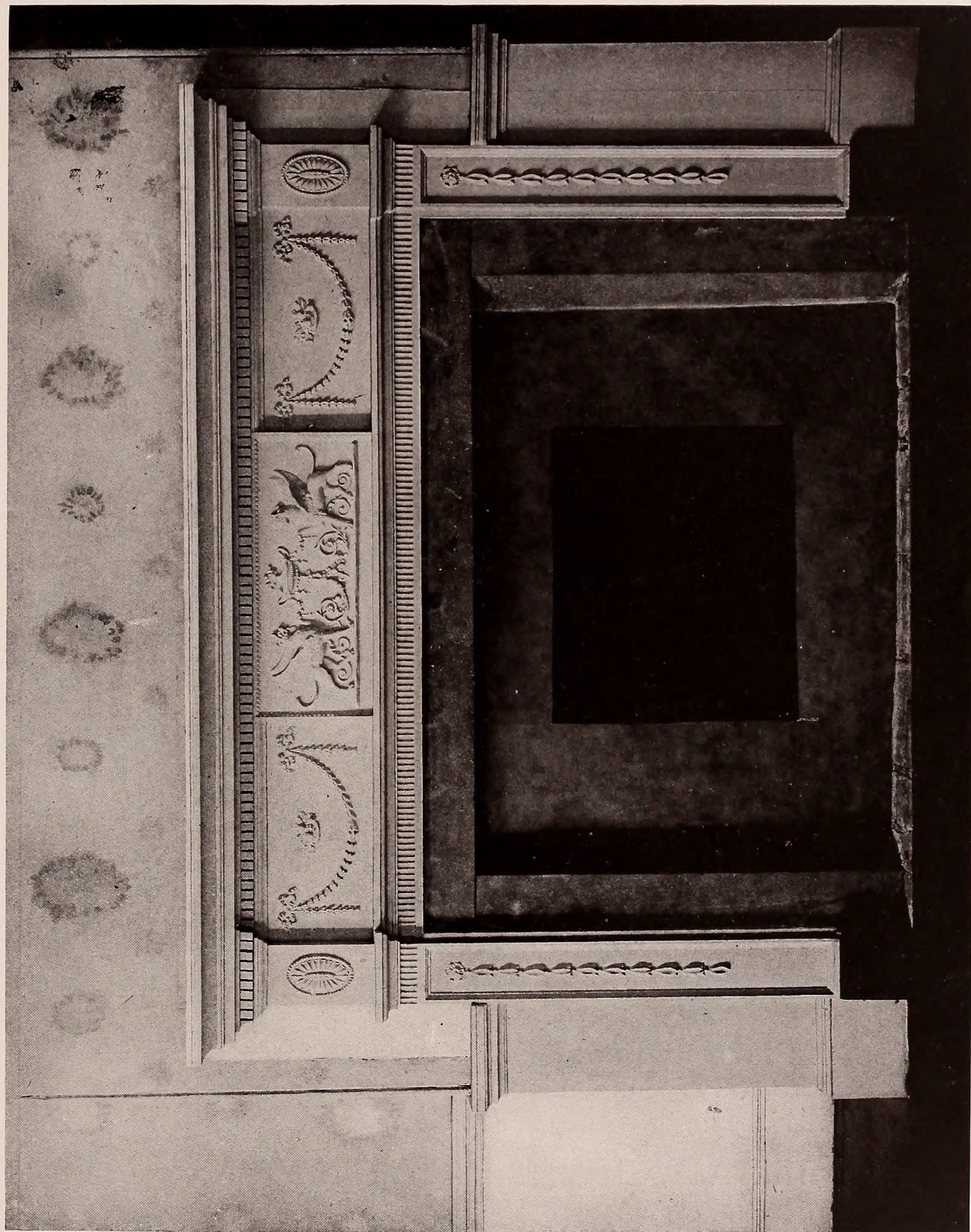
LINDALL-BARNARD-ANDREW HOUSE, SALEM, MASS., ALL WOOD, HAND-CARVED, BEFORE 1800

Photograph by Frank Cousens Art Co.
Copyright by Boston Architectural Club



MANTEL, "OAK HILL," MRS. J. C. ROGERS, PEABODY, MASS., 1800

McIntire, Architect



GOVERNOR GORE MANSION, WALTHAM, MASS., 1799

Photograph by Frank Cousins Art Co.

Copyright by Boston Architectural Club

Wrought Iron Range Company

ESTABLISHED 1864

Special Kitchen and Baking Equipment for Hotels, Hospitals, Restaurants, and Public Institutions.

Home Comfort Ranges, Boilers, Bake-Ovens, Coffee-Urns, Cook-Tables, Dish-Washing Machines, and complete **Home Comfort** Kitchen Equipment.

The kitchens of the Boston City Club were furnished entirely by us.

U. S. Military Academy at West Point and leading hotels everywhere use "**Home Comfort**" goods with satisfaction.

It is our policy **to co-operate** with architects **in their plans**, and place at their disposal any experience acquired by us which they may consider of value.

CHARLES E. JENKINS

6 PORTLAND STREET

EASTERN MANAGER

BOSTON, MASS.

Stearns Florida Gulf Cypress



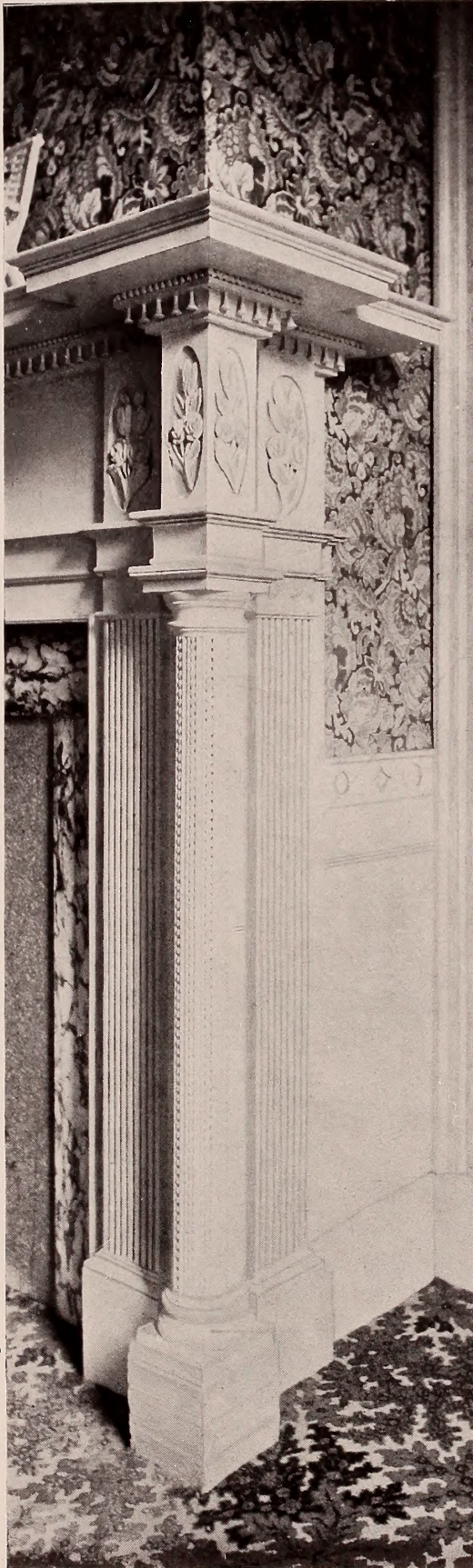
is a synonym for durability and beauty. Whether for interior or exterior trim it gives equal satisfaction; with serviceability and almost endless life.

Send for our Booklet No. 7, and learn the facts in regard to why you should use Cypress, and particularly STEARNS Florida Gulf CYPRESS.

THE A. T. STEARNS LUMBER COMPANY

NEPONSET

BOSTON, MASSACHUSETTS



ELM STREET, SALEM, MASS McIntire, 1800

PICKMAN STREET, SALEM, MASS.

McIntire, 1800

Photograph by Frank Cousens Art Co.



HAND-CARVED NEWEL AND BALUSTRADE, LEE MANSION, MARBLEHEAD, MASS., 1768

Samson Spot Sash Cord



Made of extra quality stock, carefully inspected, and guaranteed free from imperfections of braid or finish. Can be distinguished at a glance by our trade mark, the Colored Spots, used only with this extra quality.

SEND FOR SAMPLES AND CATALOGUE

SAMSON CORDAGE WORKS

BOSTON, MASS.



Artistic and Practical Hardware—inside and out

We have a specially arranged showroom and expert hardware salesmen at your service

J. B. HUNTER COMPANY
60 SUMMER STREET, BOSTON





THE ELIAS H. DERBY TEA-HOUSE AT PEABODY, MASS., 1799
Photograph by Frank Cousens Art Co.



Photographed by Julian Buckley



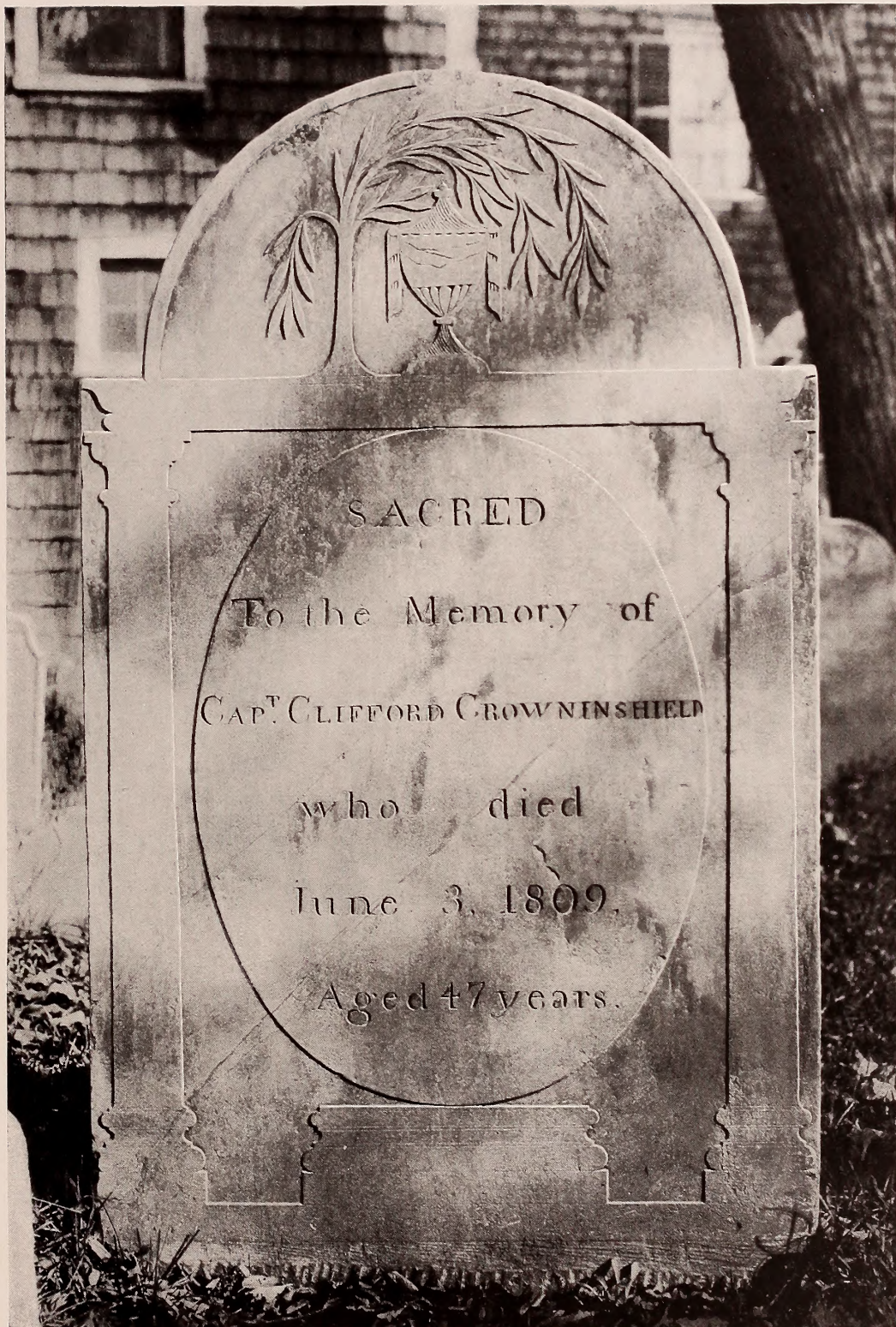


Photographed by Julian Buckley



TOMBSTONE, SALEM, MASS.

Photographed by Julian Buckley



TOMBSTONE, SALEM, MASS.

Photographed by Julian Buckley

MITCHELL & SUTHERLAND
(INC.)

BUILDERS

**166 DEVONSHIRE STREET
BOSTON**



CHRISTMAS IN HEAVEN
THE MASTERPIECE OF AMERICAN WOOD CARVING

Designed and carved by Mr. Kirchmayer

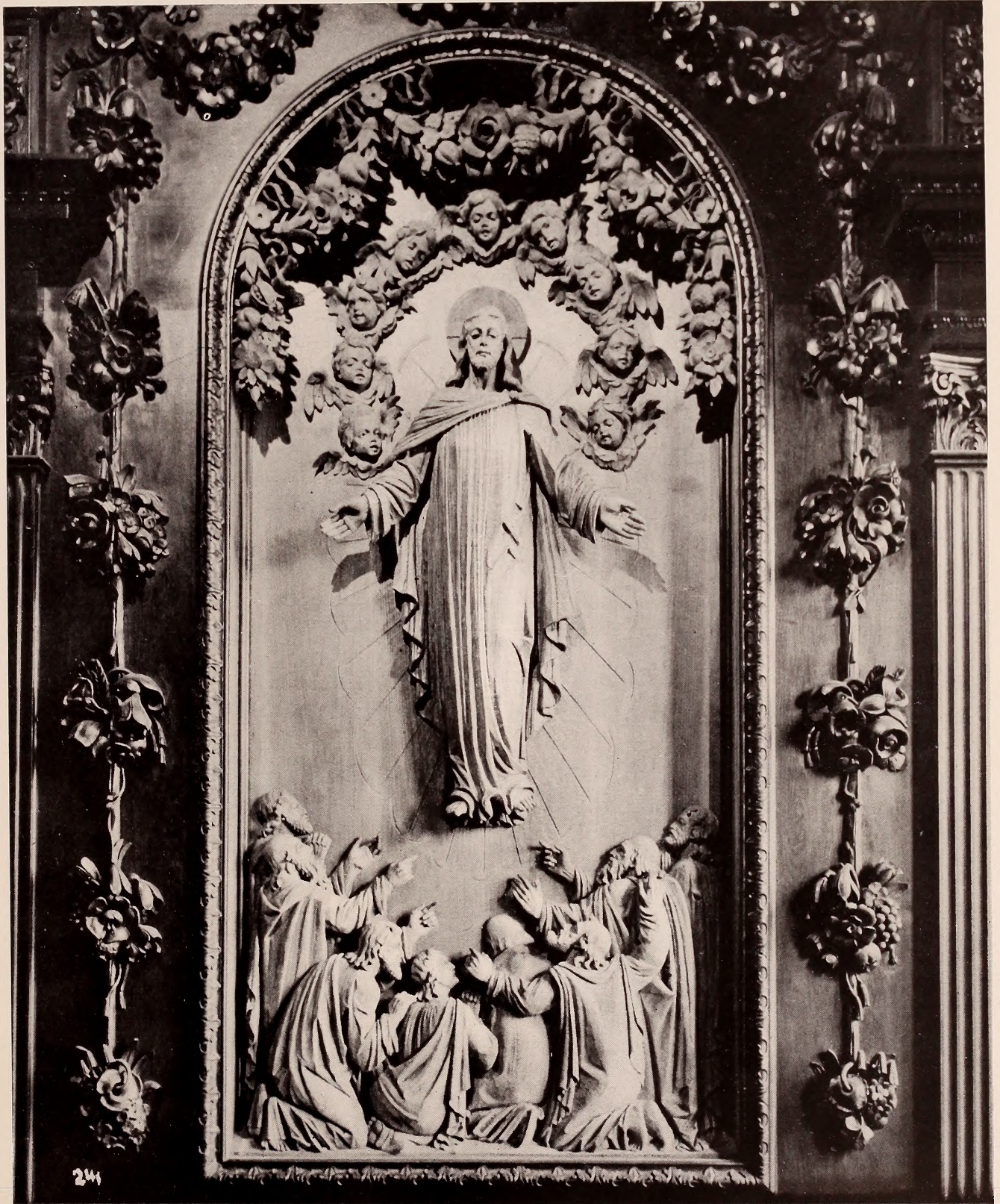
Purchased by Detroit Museum of Art



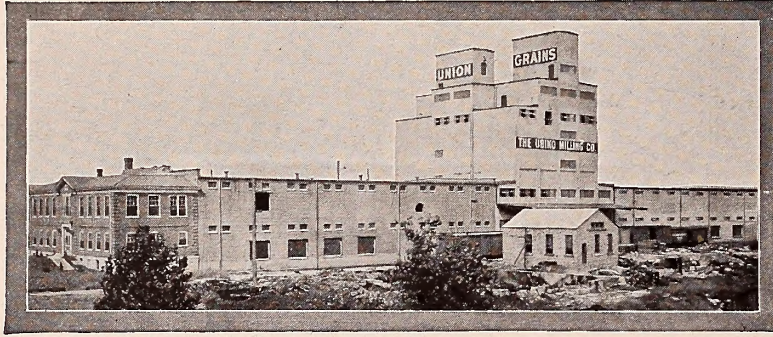
FRAGMENT OF LOCKWOOD MEMORIAL WINDOW
SAINT MICHAEL'S EPISCOPAL CHURCH, MILTON, MASS.
Phipps-Ball-Burnham Company, 65 Bedford Street, Boston, Mass.
Under supervision of Ralph Adams Cram, Esq.



ORGAN SCREEN, FIRST CHURCH, BOSTON, MASS. Allen & Collins, Architects. Carved by I. Kirchmayer



PART OF REREDOS, ST. JAMES CHURCH, RICHMOND, VA. Cram & Ferguson, Architects. Carved by I. Kirchmayer



Edwards Interlocking Slat Rolling Doors

protect this modern, up-to-date elevator from fire and the contents from theft, besides increasing the available floor space.

For convenience of operation, and for economy of installation and maintenance, owners and builders who have given the subject careful study are equipping the doorways in both old and new plants with

Edwards Rolling Steel Doors

They are made of heavy cold-rolled steel, bright or galvanized, and may be had in the corrugated or interlocking slat type. Patented Spring Release Mechanism can be applied to cause the door to close automatically in the presence of heat, thus serving to retard the progress of the flames if fire once starts. Doors have been designed and successfully operated for openings of all sizes up to 40 feet wide and 100 feet high.

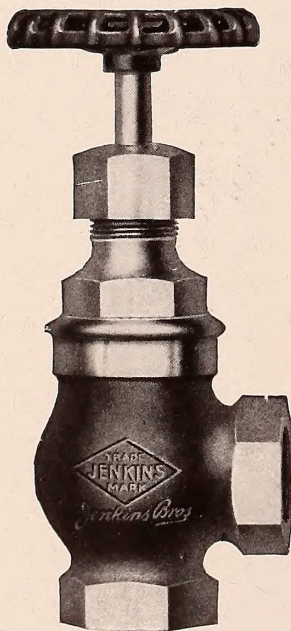
Our Engineering Department will submit plans and specifications

Write today for catalogue

SKILLMAN & SUNDERLAND

Boston Representatives

6 BEACON STREET, BOSTON



GENUINE JENKINS VALVES

BEARING THE DIAMOND TRADE MARK

All high-grade valves, built to a service standard, safe for the architect to specify and the owner to install. Scientifically chosen metals, scientific construction, a high safety factor, are reasons why you can trust your reputation to Jenkins dependability.

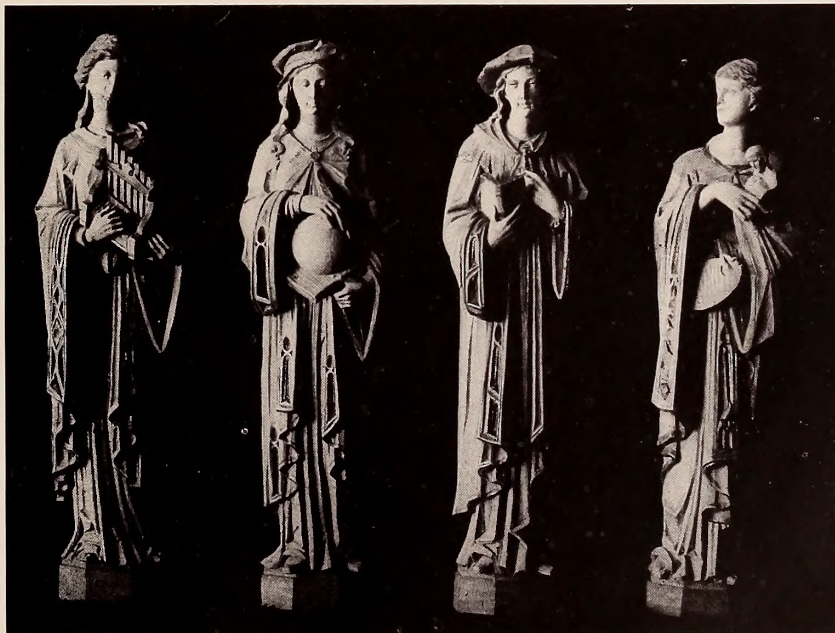
There is a Jenkins Valve for practically every purpose — for steam, hot water, cold water, air, or gas. They are made in brass, iron, and cast steel, for moderate, medium, and extra heavy pressures.

JENKINS BROS.

NEW YORK BOSTON PHILADELPHIA CHICAGO MONTREAL LONDON



MEMORIAL WINDOW, BLESSING OF SIR GALAHAD
Phipps-Ball-Burnham Company



BOOTH LIBRARY, DETROIT, MICH. Albert Kahn, Architect. Carved by I. Kirchmayer

