

III a (17)

F/A-82 - KISARAZU A/C ENGINE PLANT.

4

U. S. CONFIDENTIAL
(British Confidential)

PHOTO INTELLIGENCE SECTION
EVALUATION BRANCH
PHOTOGRAPHIC DIVISION
AC/AS, INTELLIGENCE

FUNCTIONAL ANALYSIS REPORT NO. F/A-82
Date 6 March 1945

TARGET NO: 90.14-2016
NAME OF TARGET: KISARAZU AIRCRAFT ENGINE PLANT
LOCATION: KISARAZU, HONSHU, JAPAN COORDINATES: 35°19'N - 139°55'E

PHOTOGRAPHY: DATE MISSION PRINTS
 13 Dec 44 3PR/4M37B 2V 55, 56, 57

1. This report has been prepared from a study of aerial photographs and a consideration of evaluated ground information supplied by the Joint Target Group.

2. FUNCTION:

At present the plant appears to be engaged in engine repair. From its layout, however, it is evident that considerable building expansion is planned. If this is put into effect a revision of statement of function may be necessary.

3. LOCATION:

On the N. bank of the KOITO RIVER approximately 2 miles S.E. of the town GODO which is located at the mouth of the KOITO RIVER, and approximately 4½ miles S.S.W. of the city KISARAZU.

4. SERVICES:

A RR spur from the TOKYO - TATEYAMA line enters the plant from the W. and traverses (or if not fully completed, will traverse) the length of the site from W. to E. At the junction of the spur and main line approximately 600' W. of the plant there is a small station with sidings.

5. IDENTIFICATION OF FACILITIES:

1	Storage type building
2 - 5	Small machine shops
6 - 8	Storage type buildings
9, 10	Small machine shops
11 - 13	Storage type buildings
14	Not identified
15	Storage type building
16 - 20	Not identified
21, 22	Not identified
23 - 27	Storage type buildings
28 - 31	Not identified
32	Not identified
33	Storage type building
34	Not identified
35, 36	Storage type buildings
37	Shop
38, 39	Small machine shops
40	Offices
41, 42	Small shops
43	Not identified
44 - 46	Storage type buildings
47, 48	Shops
49, 50	Engine repair

- 1 -

U. S. CONFIDENTIAL
(British Confidential)

51
5212 engine test cells
Engine test cells, probably 12, under construction6. ACTIVITY:

Sites for many buildings have been cleared and loose stores are seen at many places on the site. Immediately W. of the site is a very extensive area covered by loose stores. Work on the RR spur within the plant may still be proceeding.

Another block of probably 12 engine test cells is in course of erection.

ENCL: C.F.L. 743.913

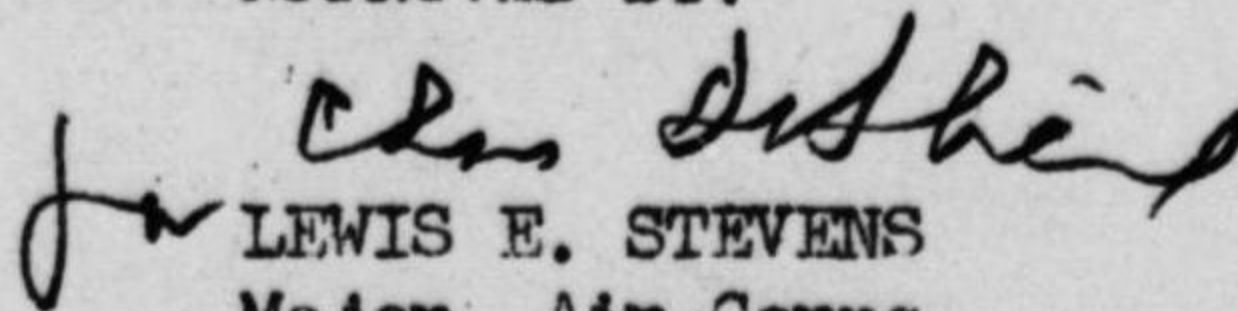
INTERPRETED BY:

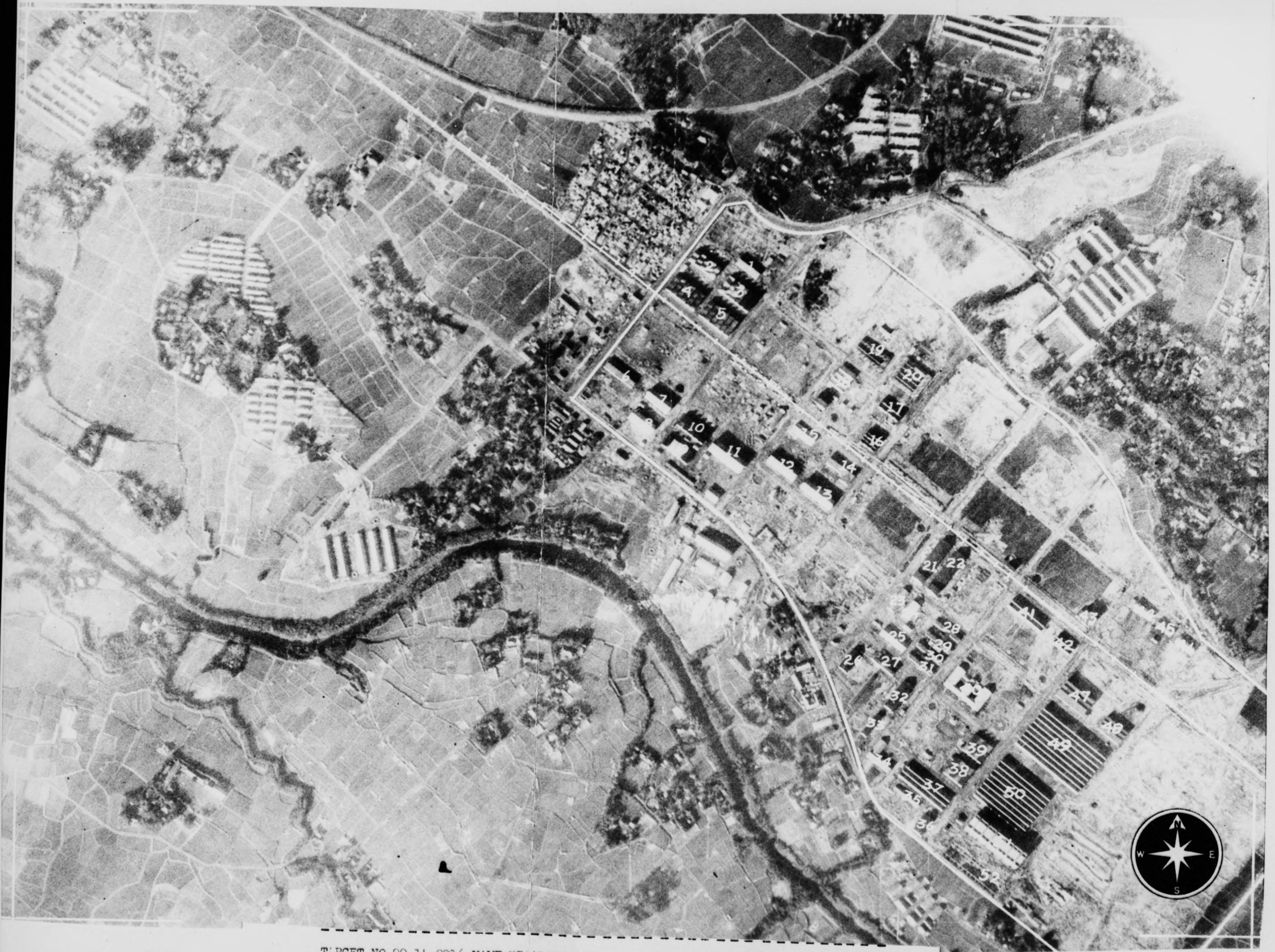
L.A.T. BALLARD
S/Ldr. RAF

JTG CONSULTANT

EDWARD MAYER

APPROVED BY:


LEWIS E. STEVENS
Major, Air Corps
Chief, Photo Intelligence Section
Evaluation Br., Photographic Division
Office of Asst. Chief of Air Staff
Intelligence



TARGET NO. 90.14-2016 NAME KISARAZU AIRCRAFT ENG. PLANT

DATE 7 Mar 45 P/4
COMPLETED

APPROX. COORD. 35°19'N 139°55'E PHOTO DATE 13 Dec 44

SCALE 1/6,000

F/A NO. 82
CFL 743.913

SORTIE, PRINT NOS. 3PR/4M37E-2V:56

CONFIDENTIAL