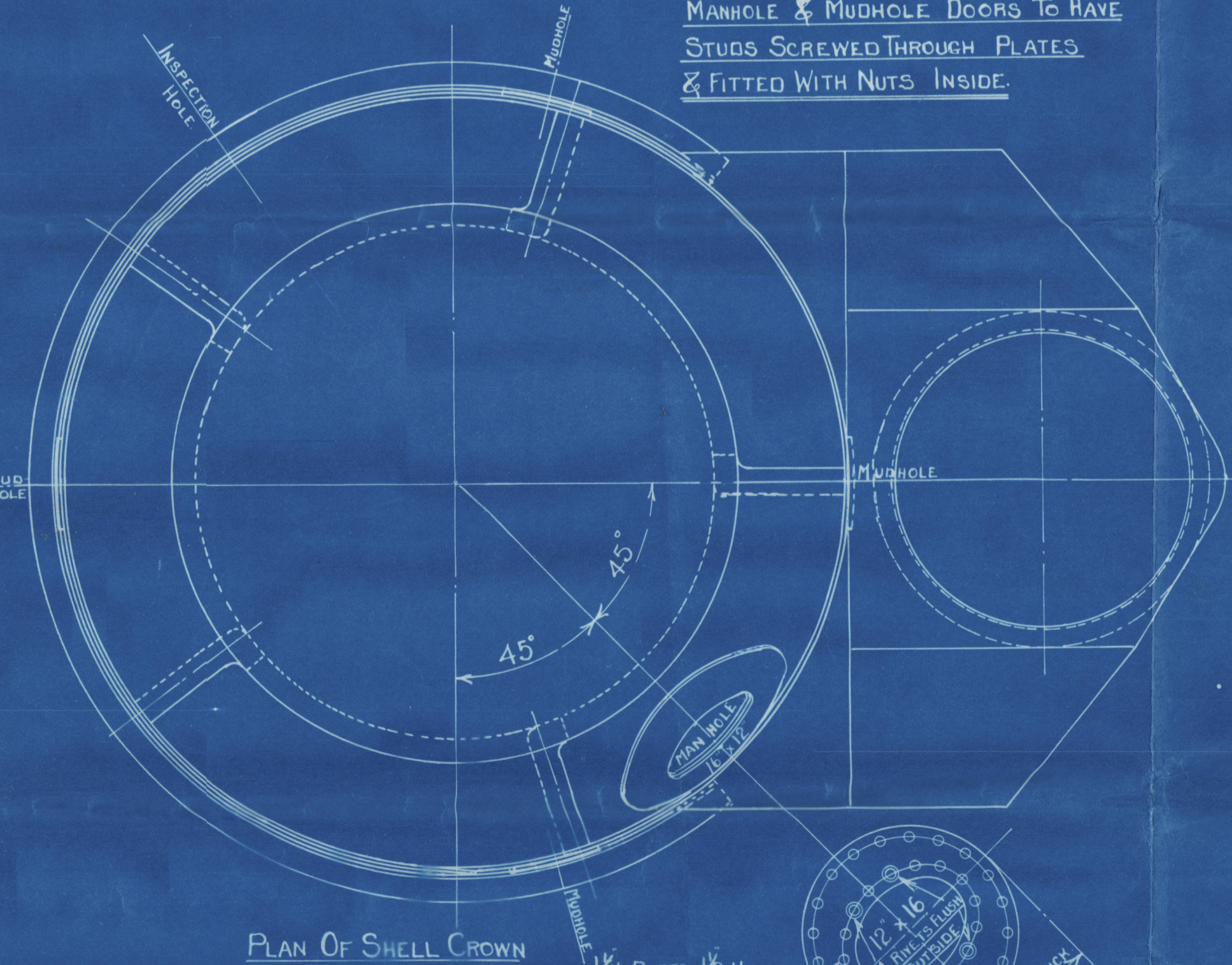
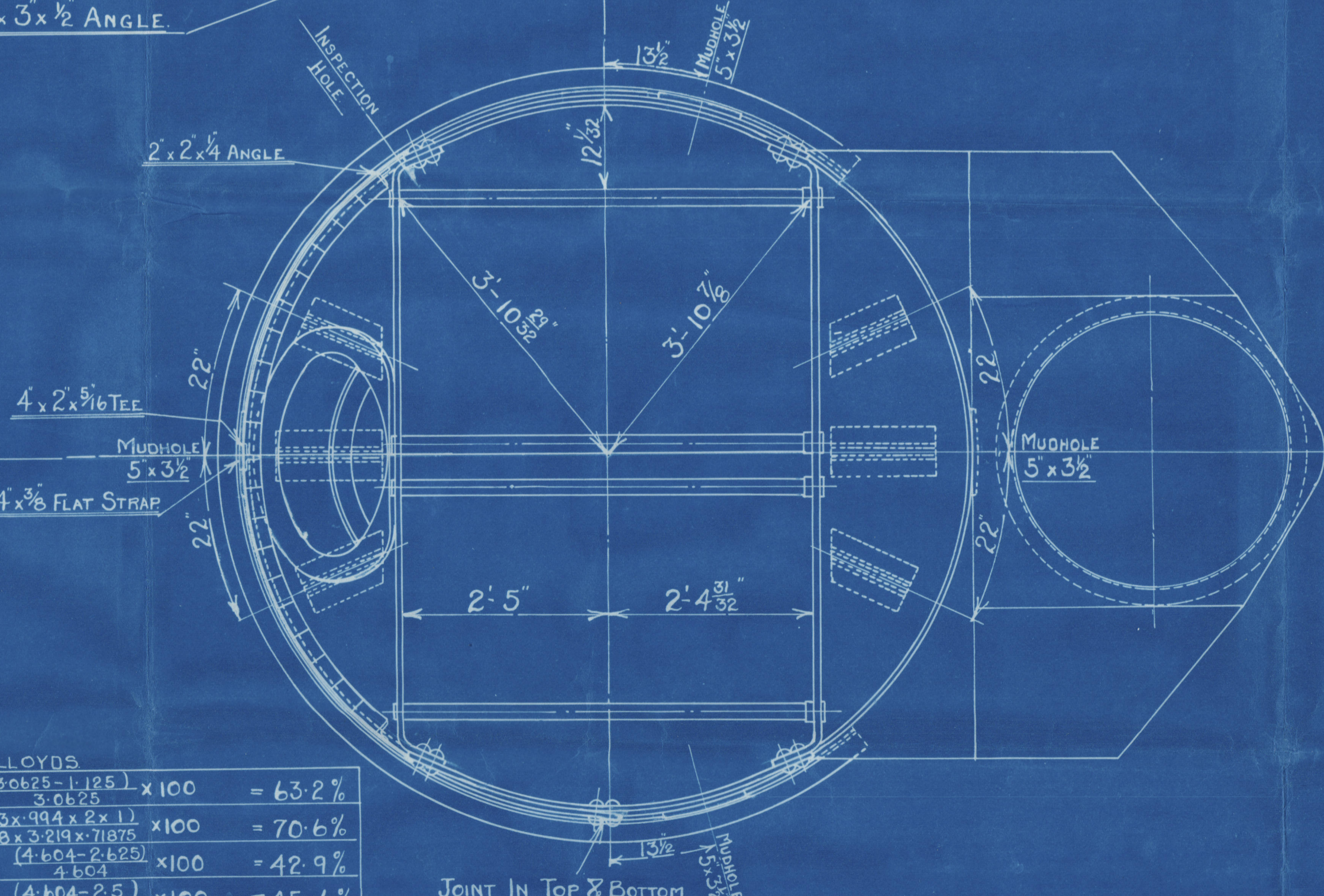
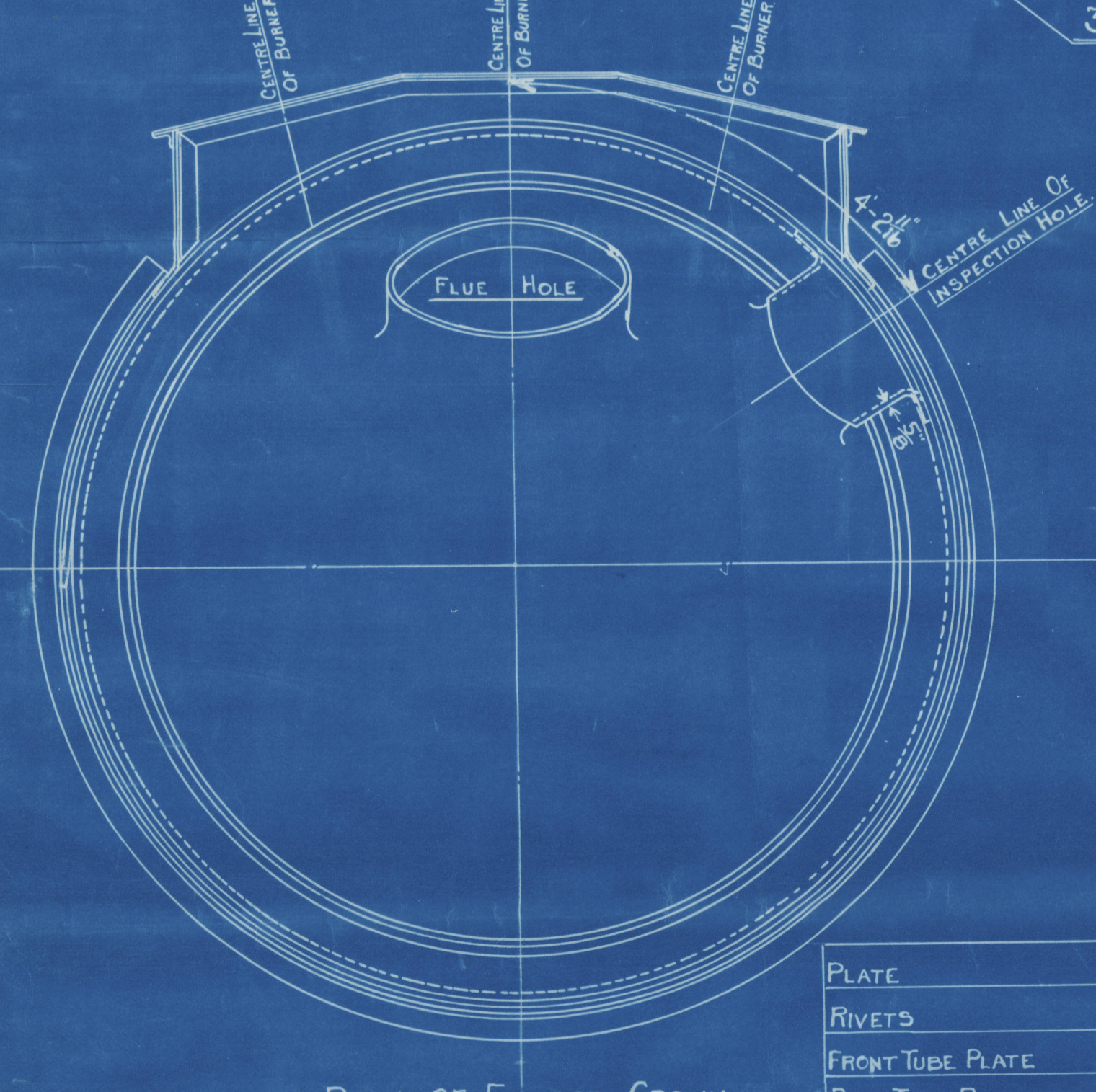
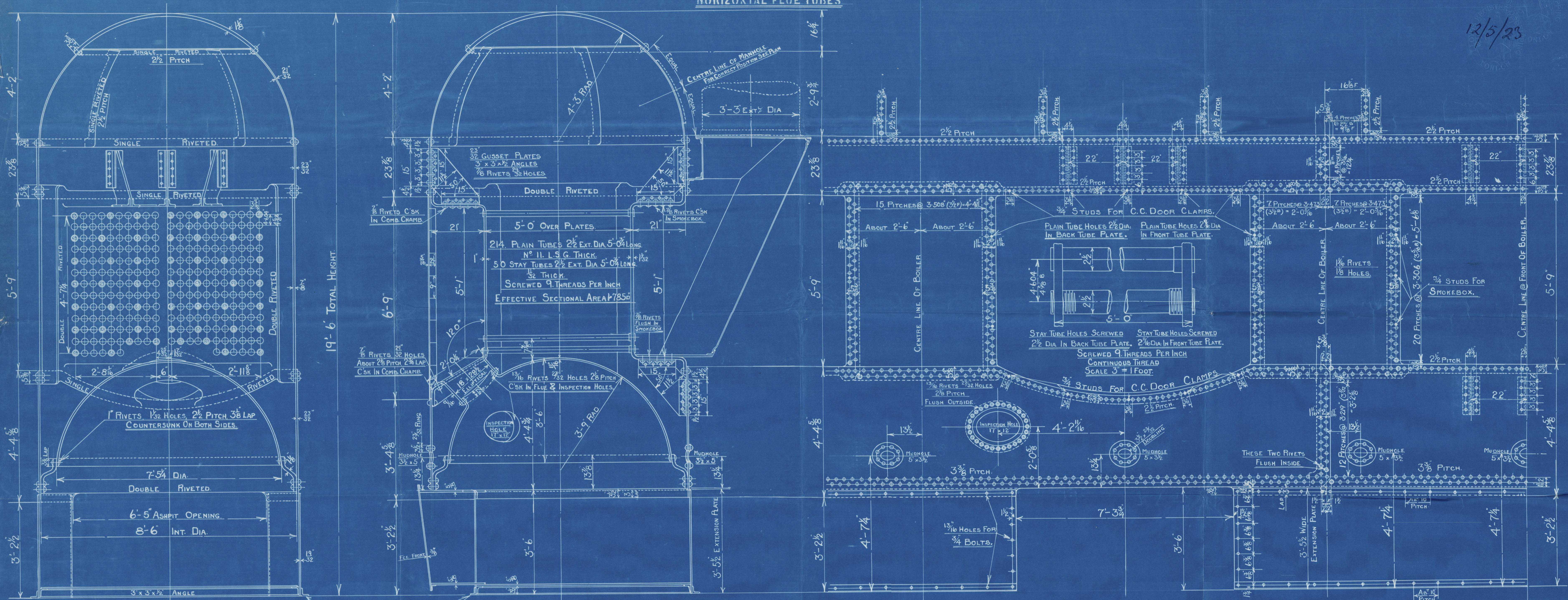


COCHRAN PATENT VERTICAL MULTITUBULAR BOILER

HORIZONTAL FLUE TUBES

12/5/23



Lloyds	
PLATE	(30x25-1.125) x 100 = 63.2%
RIVETS	(23x44 x 2x1) x 100 = 70.6%
FRONT TUBE PLATE	(4.604-2.25) x 100 = 42.9%
BACK TUBE PLATE	(4.604-2.25) x 100 = 45.6%
SHELL	(23-2) x 20 x 3-2 = 125.61 lbs
FRONT TUBE PLATE	(32-2) x 26 x 42.9 = 127.1 lbs
BACK TUBE PLATE	(32-2) x 26 x 45.6 = 131 lbs
FURNACE	275 (22-1) = 128.2 lbs
CELE RING	140 (26-1) / 102 (102-89.28) = 131.8 lbs

COCHRAN & CO ANNAN LTD
ENGINEERS & BOILERMAKERS
ANNAN, SCOTLAND

J.C. ANNAN
11/5/23

HOB
2.5.23

For Approval
PATENT BOILER N° 2207-9208
8'-6" x 19'-6" x 1000# H.S. x 125 LBS. W.P.

GRATE AREA = 41 Sq. Ft.
SIEMENS MARTIN MILD STEEL PLATES
TENSILE TESTS:-
PLATES NOT EXPOSED TO FLAME OR FLANGED..... 28 TO 32 TONS.
PLATES EXPOSED TO FLAME OR FLANGED..... 26 TO 30 TONS.

SCALE = 3/4 INCH TO 1 FOOT.

SURVEY-LLOYDS

NR.
DRAWING N° 13414
W 234-0052

Bochran & Co., Annan Ld

Boiler No 9208

WP 125 lbs/sq"

Mark m Boiler

No 16294

LLOYD'S TEST

238 LBS

WP 125 LBS.

29.6.23

H.C.F.

GLASGOW REPORT No. 42861

Braganza
ex Traden
Raufer

© 2019

W234-0052

Lloyd's Register

Foundation