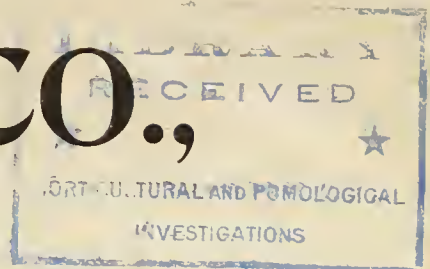


Historic, archived document

Do not assume content reflects current scientific knowledge, policies, or practices.

62,25

E. G. HILL & CO.,



RICHMOND,

INDIANA.

Fall of 1896. —



OUR TERMS OF SALE.

FIVE OR MORE PLANTS AT THE HUNDRED RATE.

FIVE PER CENT. DISCOUNT FOR CASH WITH THE ORDER. All bills subject to draft in 30 to 60 days, unless otherwise agreed upon.

New customers, if not already well known, will please send cash with the first order, and if desiring to open an account, send us good references—your banker, or some well-known business man with whom you have had dealings.

We can not be expected to ship goods to those whose standing is not known to us.

THE MOST CAREFUL ATTENTION WILL BE GIVEN TO PACKING, in order to secure safe arrival and light weight.

THE LOW EXPRESS RATE is still in force: 20 per cent. discount from regular merchandise rates.

Our Agents are glad to bill out all our boxes at this new rate. See that no mistake is made at your end of the line.

ROSES

THE NEWER VARIETIES.

Mme. Abel Chatenay. (*H. T.*) A fine grower; color rosy carmine; a beautiful variety. \$6 per 100.

Clara Watson. (*Tea.*) Salmon and pink; extremely free in bloom; a vigorous grower with handsome foliage. A new English variety, highly recommended as a bedder. \$15 per 100.

Sylph. (*Tea.*) Ivory white, tinted peach; large, high cultured, with deep, stiff petals; erect free habit, foliage beautiful, very free in bloom. A most promising bedding variety, as it is very hardy for a Tea, and the flowers last well. \$10 per 100.

Zephyr. (*Tea.*) Flowers sulphur yellow, changing to white as they open, large and full, of cupped form; very free; promises to prove an extra good bedding variety; hardy for the section; flowers last remarkably well when cut. \$10 per 100.

Princess Bonnie. (*H. T.*) Deep red, with band of white down the center of the petal; buds long and pointed; semi-double. \$5 per 100.

Souv. de Mme. Eugene Verdier. (*H. T.*) Foliage of medium size, somewhat like that of Mme. Cusin; produces strong thorny canes and large flowers from pointed buds, creamy white, shading to yellow. Strong 3-inch, \$8 per 100.

Clio. (*H. P.*) One of the grandest of the new H. P.'s. Flowers flesh color, shading to rosy pink, large and globular and freely produced. Of Baroness Rothschild type. \$8 per 100.

Chas. Gater. (*H. P.*) Shrublike in growth; color an exquisite shade of deep crimson; flower large and globular. One of the finest roses of recent years. \$8 per 100.

J. D. Pawle. (*H. P.*) Totally distinct from above, and grand in every way. The bloom is full and rounded, of immense size; petals thick and smooth. It has beautiful foliage, and is one of the freest easiest growers in the class. This is destined to become one of the most popular of red H. P.'s. We have a fine stock of it. \$8 per 100.

Mme. Jules Finger. (*H. T.*) Creamy white, flower of enormous size and very full; as grand as an H. P., and very free in bloom; very odorous. 4-inch, 20 cts. each.

Pink Souperet. (*Polyantha*) Very much like *C. Souperet*, except in color, which is deep pink; fine for pots. \$4 per 100.

Empress of China. (*Hardy Climber.*) Flowers of medium size, semi-double, soft red turning to white as it opens. Blooms from May till frost. From China. \$4 per 100.

Duke of York. Award of merit Royal Horticultural Society. Flowers vary between rosy pink and white, usually white, tipped with deep rosy pink, in the way of "Homer," but the pink shade deeper than in that variety, and the contrast of colors therefore more striking. Flowers large for a China rose, of vigorous growth and good habit; a splendid, constantly flowering decorative rose of fine substance, much more like a fine Tea than a China in character of bloom. 4-inch, \$8 per 100.

Three Sweet Briars.

\$10 per 100.

Flora McIvor. White blushed rose.

Meg Merrilees. Gorgeous crimson.

Lady Penzance. Soft copper, shading to yellow.

Forcing Varieties.

	2 1/2-in . per 100
Bride	\$3 00
Bridesmaid. 4-inch, \$6 per 100...	3 00
Mme. Haste	3 00
Meteor	3 00
Kaiserina Aug. Victoria. 3-inch, \$6 per 100...	4 00
Perle ..	4 00
La France	3 00
Mme. Testout	6 00
Niphetos	4 00
Mme. Watteville.....	3 00
American Beauty	5 00
Mrs. Pierrepont Morgan. 3-inch \$5 per 100 ..	
Mme. Cusin. 4-inch \$6 per 100.....	

Out-door Bedding Varieties.

	2 1/2-in . per 100
Ang. Guinoisseau. 4-inch, \$8 per 100.....	
C. Souperet	3 00
Hermosa	3 00
Malmaison	4 00
Etoile de Lyon.....	3 00
Marie Guillot.....	3 00
Anna Olivier.....	3 00
Golden Gate.....	3 00

	2½-in., per 100
Pierre Guillot	\$ 4 00
Marie Van Hontte.....	3 00
Coquette de Lyon.....	3 00
Souv. de Un Ami	3 00
Ctess. La Barthe	3 00
Cl. Malmaison.....	4 00
Queen's Searlet.....	3 00
Safrano	3 00
Viscountess Folkestone.....	4 00
Bourbon Queen.....	3 00
Vallee Chamounix.....	3 00

All the above are too well known to need description. The following are grand additions to this very useful class — introductions of late years which have stood the test :

Trinmph de Pernet Pere. (*H. T.*) Large long pointed bud ; color bright red, double and free. \$3 per 100.

Lettie Coles. One of the loveliest of the pink bedders ; very bright ; cup shaped, extra full. One of the grandest roses for outdoor bedding. \$4 per 100.

Edw. Littaye. Of Cusin type ; very carmine, changing to light pink. Very strong in growth. \$3 per 100.

Lady Grosvenor. (*H. T.*) Flowers flesh color, large and globular. \$3 per 100.

Leoni Osterrieth. (*Polyantha.*) Pure porcelaine white with blush center. \$3 per 100.

Mme. Pellissier. An improved Coq. de Lyon. An extra fine yellow bedder. \$3 per 100.

Bertha Clavel. (*Bourbon.*) A very beautiful sport from *Malmaison*. Cream white, with rose center and delicate pink stripe. \$4 per 100.

Graee Darling. (*H. T.*) An exquisite rose, creamy

white, shaded rosy peach, wax-like petal, large and full. \$4 per 100.

Pink Rover. Flower large and full, tender rose color, deeper center. Very free in growth. \$4 per 100.

CLIMBERS.

	Per 100
Prairie Queen	\$3 00
Baltimore Belle.....	3 00
Reine Marie Henriette.....	3 00
Mme. Bessouneau (<i>Like Gl. Dijon</i>).....	3 00
Marechal Niel. Grand 4-inch, \$8 per 100.....	3 00
Crimson Rambler. Grand 4-inch, \$8 per 100..	4 00

MOSSSES.

\$5 per 100.

Crimson Globe.	Capt. Ingraham.
Ctess. Murinais.	Nuits d' Young.
Monsseline.	Glory of Mosses.
Blanche Moreau.	Princess Adelaide.
A Longs Pedonele.	

H. P'S.

\$4 per 100.

Ulrich Brunner.	Mme. G. Piganean.
3-inch, \$8 per 100.	Gl. de Bruxelles.
Paul Neron.	Mme. Montet.
Gen. Jacq.	Mme. Plantier.
Margaret Dickson.	Mrs. John Laing.
Lady Arthur Hill.	3-inch, \$8 per 100.
Glóire Lyonnaise.	Mme. Masson.
Pierre Notting.	

Chrysanthemums.

NOVELTIES OF 1896.

Stock Plants, \$25 per 100.

From open ground, and from 5 and 6-inch pots.

Mrs. E. Buettner.	Indiana.
Mrs. W. C. Egan.	Gov. Matthews.
Mrs. Perrin.	Miss Agnes Dalskov.
Glory of Pacific.	Violescent.
Liberty.	Gretchen Buettner.
Modesto.	Daydawn.
Mrs. W. J. Godfrey.	Autumn Bride.
	Ruth Ellis.

VERY EARLY SORTS.

\$15 per 100, except where noted.

LADY FITZWYGRAM.	Sept., white, \$25 per 100.
MRS. M. R. PARKER, JR.	Pink.
MARION HENDERSON.	Yellow.
HER MAJESTY.	Daybreak pink.
GLORY OF THE PACIFIC.	Pink. \$25 per 100.
RADIANCE.	Yellow.
MRS. WHILLDIN.	Yellow.
MME. BERGMANN.	White.
MISS M. M. JOHNSON.	Yellow.
MRS. H. ROBINSON.	White.

MIDSEASON.**\$15 per 100, except where noted.**

Achilles.	M. MEG. \$25 per 100.
Antoinette.	MRS. JOS. H. WHITE.
Crystalina.	MAYFLOWER.
CHAS. DAVIS.	MRS. G. PITCHER.
COL. C. T. BOURNE. \$25	MISS F. PULLMAN.
per 100.	MRS. DREWITT. \$25 per
DUKE OF YORK. \$25 per	100.
100.	MRS. S. T. MURDOCH.
Eda Prass.	MME. MARIE GIRAUD.
Eugene Dailedouze.	MINERVA.
Fisher's Torch.	MRS. FARRINGTON. \$25
F. L. Atkins.	per 100.
Good Gracious.	MRS. R. C. KINGSTON.
Golden Wedding.	\$25 per 100.
Grace Yoskiike. \$25 per	MAJOR BONNAFFON.
100.	MUTUAL FRIEND.
H. L. Sunderbrneh.	MRS. J. G. BEER.
H. W. Rieman.	Nivens.

Inter Ocean.	Nemesis.
Jas. Beggs. \$25 per 100.	Owen's Perfection. \$25
Jno. Shrimpton.	per 100.
Jno. Bunyan.	Philadelphia.
J. E. Lager.	Pearl Palace.
Jno. Fulford. \$25 per 100.	Queen Elizabeth.
Le Colosse Grenoble.	St. Laurent.
Lady Playfair.	Sonv. Petit Ami.
Louise D. Black.	Snow Cap.
Louise.	Titian.
MRS. F. L. AMES.	V. Morel.
MRS. GEO. WEST.	Vice-Prest. Audigier.
MRS. J. R. TAYLOR. \$25	W. B. Dinsmore.
per 100.	W. W. ASTOR.

POMPONS.**\$15 per 100.**

Pasbetha.	Mignon.
Percy's Seedling.	Mrs. Folwart.
Miss P. Broughton.	J. Present.

Geraniums.**FIVE NEW GERANIUMS.****35 cts. each; the Five for \$1.50.**

MRS. D'OMBRAIN. Pale blush at the margins, deepening to rich salmon at the center; an immense flower of exquisite form, of good habit, and wonderfully free in bloom.

KITTY. Soft cherry red, with white eye and paler blotch on the two upper petals; flowers very large and perfectly circular; coloring very lovely.

PURITAN. White ground shaded salmon which deepens around the center; very pretty delicate coloring

ST. CECILIA. Warm shade of salmon, much deeper at the center, the darker shade forming a ring around the eye; both floret and truss large; remarkably free

The above four sorts are splendid additions to the English round-flowering section. The florets are of immense size, single, and perfectly circular. The colors are wonderfully fine.

BELLE ALLIANCE. Single. Medium sized florets in large trusses, white, dotted and picqueted with violet. A very beautiful and odd variety that catches the eye at once. A decided novelty

NEW GERANIUMS OF SPRING OF 1896.**English Round-Flowering Varieties.****\$2 per Dozen.**

This grand section of Single Geraniums has always been deservedly popular, and the demand has always exceeded the supply. The enormous size of the flowers, clear colors and perfect form are positively startling.

Eleanor. Clear, bright orange. This variety has such a strong tint of yellow in it as to attract general at-

tention. The plant is dwarf and free and the flowers better than anything previously raised in this color though not equal in size to a few in other colors

Enid. Clear bright rosy red large well-shaped pips, 2 1/4 inches diameter forming huge compact trusses of bloom. This is one of the brightest and most attractive.

Florence Farmer. White ground, veined and tinted with rosy salmon, the color deepening toward the center, and forming an irregular circle round the eye. The flower is perfect in form, circular, with each petal gracefully recurving. The plant is a vigorous but compact grower, and very free.

Galatea. Delicate salmon rose, with white blotch on the upper petals; large truss and very free.

Gertrude Pearson. Pure rose pink, with conspicuous white blotch on two upper petals; flower beautifully formed and the largest of its color; habit good, foliage nicely zoned.

Lucrece. Clear bright rosy pink, with large white blotch on two upper petals. The individual blooms are very large, round, and finely formed. The color is very good, a true pink without any taint of mauve or purple.

Mrs. E. Rawson. Rich orange scarlet, of perfect shape and smooth, refined finish.

Olivia. Bright rosy cerise, the upper petals being suffused with a rather darker shade, a most charming scheme of color. The pipes are large, $2\frac{1}{4}$ inches diameter, and well formed. The trusses also are large, and produced in great profusion.

Snowdrop. White as snow and absolutely pure under all conditions. A wonderful advance on all the older circular whites, being of perfect form; the largest of its color, the single florets measuring $2\frac{1}{8}$ inches in diameter; habit very dwarf and free.

THREE AUREOLES.

\$2 per Dozen.

Le Rhone. A gorgeous rosy scarlet, with a white eye and white blotches on the upper petals, the upper part of the blotch shading into carmine at its junction with the ground color; floret quite circular, of the largest size; very distinct; catches the eye at once. Gives every promise of being a showy and sturdy bedder.

Mme. Bruant. A variety totally distinct from every other in culture; plant vigorous and free flowering; fine trusses with large flowers; white, veined with carmine lake, the five petals regularly bordered in bright solferino; the arrangement of color is exquisite, often intermingling and producing a striped or "panache" effect.

Fleur Poitevine. This beautiful novelty differs entirely from the preceding. The flowers are large, color brilliant rosy carmine, marbled and striped in white and producing an aureole of deep orange carmine at the center. The plant is robust, and produces quantities of bloom on stiff stems.

NEW BRUANT.

25 cts. each.

J. D. Cabos. Single. Plant of dwarf growth, flowering in abundance; trusses of the largest size, composed of large flowers, showing a new and delightful color in Bruants, soft rosy pink. Will prove a magnificent pink bedder.

NEW DOUBLES.

\$2 per Dozen.

Ctess. de Harcourt. Pure snow white; a grand bedder; the best double white on our grounds this year; florets large and beautifully formed; extremely free in bloom, forming a bank of white.

Triomphe de Nancy. Flowers semi-double, carmine red with white markings very peculiarly arranged; an entirely novel variety with large trusses of immense florets. No other double variety has ever shown the white marking similarly distributed.

Pierre Macl. Violet lake, or pure violet, upper petal marked in pure white; the first variety to show this combination of color; very distinct, truss large and freely produced; very beautiful.

Three New Double Ivy Geraniums.

\$1.50 per Dozen.

P. Pertzsch. Flowers of enormous size and clear rosy scarlet, shading to maroon. Flowers of exquisite form and very free in bloom.

M. Dybowski. Very large semi-double flowers of intense scarlet color.

Ernest Czerniak. Flowers of enormous size, and dark crimson in color.

OLDER BRUANTS.

\$4 per 100, except where noted.

A. Ricard. Single dwarf, very strong, free in bloom; orange red; immense flower and truss. \$10 per 100.

Aurora Boreale. Single. Bright scarlet; still one of the finest.

Beaute Poitevine. Semi-double. Enormous salmon-pink flowers. \$5 per 100.

Baronne Scalibert. Single. Soft pink, center white; beautiful beyond description. \$10 per 100.

Bruant. Still unsurpassed.

Ct. de Blacas. Single. Salmon, changing to orange scarlet; white eye.

Chaplin. Semi-double. Scarlet, white center; dwarf grower.

Gen. Dodds. Very dwarf. Truss and floret very large; color soft vermilion; extra fine. \$10 per 100.

Mrs. A. Blanc. Single. Apricot red with shaded center; very beautiful.

M. Poinsignon. Single. Bright rosy pink; flowers immense.

Tour Eiffel. Semi-double. Flowers and trusses of the largest size; odd bright shade of red.

Ville de Poitiers. Double. Nothing finer in the Bruant race. Color, rosy scarlet; florets nearly three inches across, form of Beaute Poitevine. \$10 per 100.

GENERAL COLLECTION.

\$4.00 per 100; \$3.00 our choice.

Alpine Beauty. Double. One of the very finest of the double white leaders.

Ben Schroder. One of the finest of single pinks; very bright; flower circular.

Dr. Blanche. Double. Flowers large and full; very bright yellowish scarlet.

Le Cid. *Double.* Dark velvety red; type of S. A. Nutt; fine grower.

L. Swarthing. *Single.* Scarlet flame shading to salmon; truss enormous.

La Favorite. Double white. Grand.

Mrs. J. M. Gaar. Still THE single white bedder.

Marvel. Double. Good velvety red.

Mme. Ayme Chevaliere. Double. Form of flower like the finest in *Bruant section*; extra fine.

S. A. Nutt. Double. Grand bedder; velvety crimson.

ALSO \$4 PER 100.

Arbutus. In foliage an exact reproduction of *Crystal Palace Gem*. Very profuse in bloom, which is light salmon pink in color.

Crystal Palace Gem. Body of leaf green, with broad outer band of golden yellow.

Golden Bedder. Of *Crystal Palace Gem* type; extra good.

Mrs. Pollock. Tri-color Geranium. Bright bronzed zone, belted with crimson and edged with golden yellow. A beautiful variety.

Prince Bismarck. A good dark bronze. One of the best.

NUTMEG SCENTED.

SMALL LEAVED ROSE SCENTED.

DOUBLE IVY GERANIUMS.

\$1 per 100, except where noted.

August Hardy. Fine scarlet; long stems.

Beauty of Castle Hill. A most beautiful variety, producing flowers as large as those of *Souv. de Chas. Turner*.

ner: color a lovely soft shade of rose, with dark blotch on the upper petals. Free in bloom and a fine grower. \$6 per 100.

Camille Doucet. Flowers large; rosy salmon, lightly marked red on each petal. \$8 per 100.

Eden Marchii. Flowers are very large; rosy salmon, shaded violet.

Edith Owen. Deep rose color, very bright and full; fine, bold flower; plant has a stiff, upright habit.

Gl. de Lorraine. Bright cherry color; beautiful rosette form; very large.

Incomparable. (*Syn. Remarkable.*) Trusses very large; florets immense and very regular in form; quite full. The color is an exquisite shade of rosy carmine. No finer. \$8 per 100.

Jean d' Arc. A grand variety: the nearest approach to a pure white in the family.

Jules Janin. Flowers very large, of cup shape, quiet double, rosy violet in color. \$10 per 100.

La Foudre. Flowers quite double and of bright orange scarlet color. \$10 per 100.

La Rosiere. A lovely shade of rich, glistening rose color, of perfect shape.

Merimee. Plant of trailing habit; flowers white, veined black. Fine for baskets and vases.

Ryecroft Surprise. A seedling from *Souv. de Chas. Turner*: of bold, vigorous, upright habit producing flowers of a lovely and distinct shade of salmon rose. \$8 per 100.

Souv. Chas. Turner. One of the handsomest Ivy Geraniums ever introduced. Florets 2½ inches, in trusses six inches across. The color is a deep bright pink, approaching scarlet in color the upper petals feathered maroon; quite double.

CANNAS.

	Per 100		Per 100
Souv. d' Aut. Crozy	\$25 00	Juo. Laing	\$50 00
Obelisque	25 00	Mlle. L. Lorenz	25 00
Comete	50 00	Mme. Crozy	3 00
Aeme	25 00	Queen Charlotte	5 00
Columbia	12 00	Eldorado	8 00
Flamingo	10 00	Florence Vaughan	8 00
O. Mirabeau	10 00	Chas. Henderson	2 50
Papa Canua	25 00	A Bouvier	2 50
E. G. Hill	25 00	Italia	each 1 00
L. Colombe	25 00	Austria	each 75

ALLAMANDA WILLIAMSII.

One of the most valuable novelties of recent years. Of dwarf, shrubby habit, it makes a beautiful pot plant, and bears its flowers in clusters on the tips of the branches; color, canary yellow, and about one-third the size of *Hendersonii*; very free in bloom, a well grown plant, being a bouquet of flowers and buds. It is continuous in bloom throughout the year. We have a large stock in fine condition. 2½-inch pots, \$8 per 100.

ALLAMANDA HENDERSONNII.

Fine green-house climber, with enormous trumpet-shaped flowers of golden yellow. 2½-inch pots, \$6 per 100.

ALOYSIA CITRIODORA.

The ever-popular Lemon Verbena; nice young plants in free growth. \$4 per 100.

ABUTILONS.

ENFANTA EULALIE.

Short jointed and compact in growth; fine for pots; flowers very large and flaring; color, satin pink; very free. \$4 per 100.

SOUV. DE BONNE.

A fine decorative variety with silver-edged leaves; a strong, rapid grower, bearing large orange red blossoms on very long stems. A most useful variety. \$4 per 100.

BEGONIAS.

REX. In variety, \$5 per 100.

Flowering Varieties.

Semper-florens Gigantea Rosea. \$4 per 100.

Semper-florens Amelie Bruant. Rose pink. \$6 per 100.

Semper-florens La France. Large, pale pink. \$10 per 100.

Semper-florens Elegantissima. A grand novelty of last year; large, bright pink flowers, very freely produced. \$10 per 100.

La Neige. A cross between two of the choicest varieties *Alba* and *Lubbersii*; a very showy, spotted leaved variety. \$15 per 100.

Mme. Charrat. Much like *Coralina*; flowers coral red, produced freely through a long season. \$15 per 100.

Prest. Carnot. Of *Rubra* type, larger in leaf and also in flower; soft rose color in large panicles. \$6 per 100.

M. De Lesseps. An improved *Argentea Guttata*; silky texture, spotted silver. \$4 per 100.

Haageana. Large, bronzy, green leaves, red beneath; flowers large, like those of *Nitida*. \$8 per 100.

Duchartrei. Purplish red leaves; of *Metallica* type. \$6 per 100.

	Per 100
Rubra	\$ 4 00
Metallica	3 00
Feastii	4 00
Sandersonii	3 00
Vernon	3 00
Alba Pieta	3 00
Argentea Guttata	3 00
Cuprea	4 00
Weltoniensis	4 00
Nitida Rosea	4 00
Thurstonii	4 00
Diadema	4 00
Margaritae	3 00
Sanguinea	4 00

CROTONS.

\$5 per 100, in 30 grand varieties.

CUPHEA.

Platycentra. Cigar plant, with small red flower. \$3 per 100.

HIBISCUS.

\$4 per 100.

Cooperii Tricolor. Especially valuable as a foliage plant, the young growths having a variegation running from white to red with different shades of green; flower single crimson.

Collerii. Flowers orange yellow, crimson scarlet at base of the petal.

Denisonii. Flowers very large, single, and of a lovely shade of soft pink; one of the rarest.

Versicolor. Handsomely striped in crimson, yellow, rose and white.

Toulousaine. Large double flowers of very dark crimson

Grandiflora. Single scarlet flowers most profusely borne all through the summer. Foliage very glossy.

Lindenii. Red, striped yellow; double.

Subviolaceous. Enormous double flowers of crimson, shading to purple at the base; extremely free in bloom; one of the grandest.

HELIOTROPES.

THE GIANT. (*Le Geant*.) One of the finest of the new race of Bruant Heliotropes. This variety is moderately dwarf, of fine shrubby habit; the panicles of bloom are enormous; the color, rosy violet with white eye. 20 cents each; \$2 per dozen.

MME. ALFRED CARRIERE. (*Bruant type*.) Bright blue, large white eye, enormous panicles of bloom; semi-dwarf and very free. \$3 per 100.

CAMELEON. Bright blue passing to pale lavender; large florets and panicles. \$3 00 per 100.

ALBERT DELAUX. One of the prettiest of golden variegated plants; a strong, free grower; purple flowers. \$3 00 per 100.

WHITE LADY. The best of the very light varieties. \$3.00 per 100.

HYDRANGEA.

OTAKSA MONSTROSA. Color of bloom, intense rose shaded white; borne in much larger clusters than in *Otaksa*; quite small plants bearing blooms of the most enormous size, and which are very lasting in quality. The variety is free in growth, and very free in the production of bloom. One of the finest novelties on our list. 2½-inch, \$6 per 100; 7-inch, \$25 per 100.

Otaksa. Bright rosy pink. 2-inch pots, \$4 per 100; 7-inch, \$12 per 100.

Ramis Pietis. Red branched, bright cherry-pink flowers. 2-inch pots, \$1 per 100; 5-inch pots, \$8 per 100; 6-inch pots, \$10 per 100.

Thos. Hogg. Very large, white flowers. 2-inch pots, \$4 per 100.

Paniculata Grandiflora. The most popular of flowering shrubs. Two years old, \$6 per 100.

HELIANTHUS.

(*Hardy Sunflower*)

Soleil d'Or. This grand variety should be in every collection. It forms a very ornamental bush covered with golden blooms larger than those of *M. Plena*, and the form of a *Mme. Bergmann* chrysanthemum; growth compact and short jointed. \$10 per 100.

PASSIFLORA PFORDTII.

The most beautiful in the family, and the most satisfactory for general use. The foliage is ornamental, the flowers freely borne, of a rich shade of blue, and most handsomely formed. \$5 per 100.

PARIS DAISIES.

\$4 per 100.

White. Yellow eye.

Mme. Farfaillon. White, with yellow eye; very finely divided foliage. Flowers very large.

SALVIA.

Le President. Very dwarf, and the earliest of all the scarlet Salvias. color velvety scarlet, very bright, growth compact, a mass of color. \$6 per 100.

Vermont. Almost identical with *Le President*, except that foliage is almost a golden yellow. \$6 per 100.

DECORATIVE PLANTS.**PALMS.**

Areca Lutescens. 2½-inch, \$6 per 100 - 5-inch, 40 cents each.

Latania Barbonica. 3-inch, \$8 per 100; 4-inch, \$15

Kentia Belmoreana. 3-inch, \$16 per 100.

PANDANAS UTILIS.

4-inch, \$12 per 100.

FICUS BELGICA.

4-inch, 25 cents each; 6-inch, 40 cents each.

FERN—PTERIS TREMULA.

3-inch \$6 per 100 - 2½-inch, \$4 per 100.

ASPARAGUS PLUMOSUS.

2½ inch, \$8 per 100 - 3-inch, \$10 per 100

DRACENAS.

4-inch pots, in variety, \$12 per 100.

FARFUGIUM GRANDE.

Nice stock of this fine plant in 4-inch pots at \$2 per dozen.

