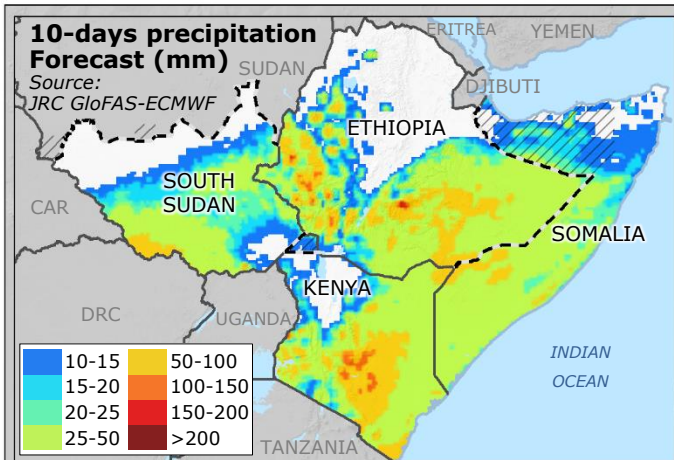


East Africa | Floods



- 430,000
- 17,000

- 22
- 200,000
- 11,000
- 6,000

- 4
- 270,000
- 10,000
- 250

Copernicus EMSR404
Activation time: 2 Nov.
60% of settlements flooded

On 30 October, the European Commission provided €3 million in humanitarian assistance, allocated as follows: €1.5 million for South Sudan, €850,000 for Somalia, €500,000 for Ethiopia, €150,000 for Kenya.

RAINFALL ACCUMULATION (> 100mm)

1 Oct. – 4 Nov.
Source: NASA-GPM

> 600 mm
400 – 600 mm
200 – 400 mm
100 – 200 mm

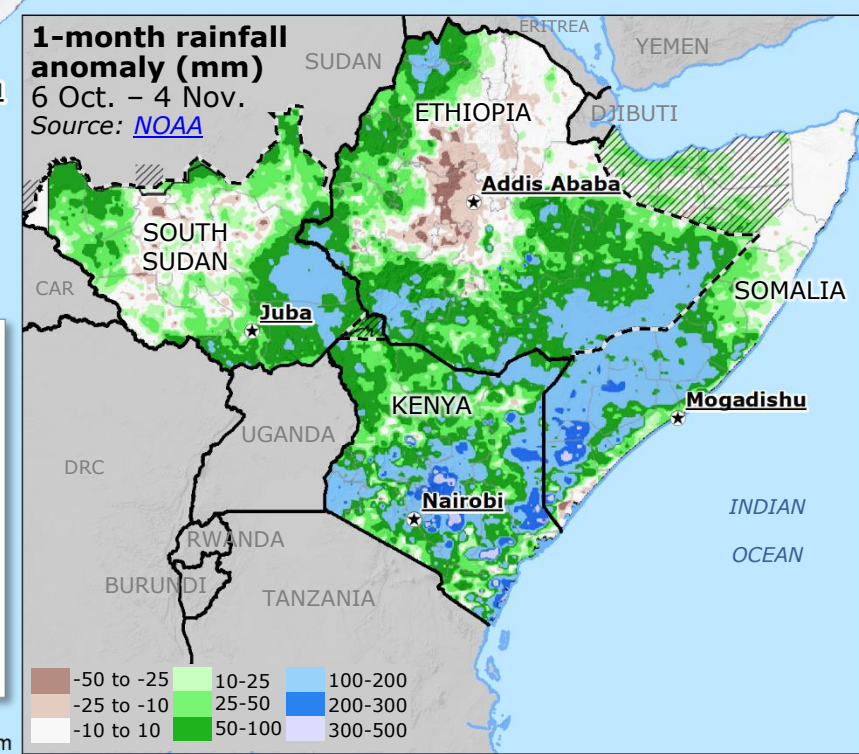
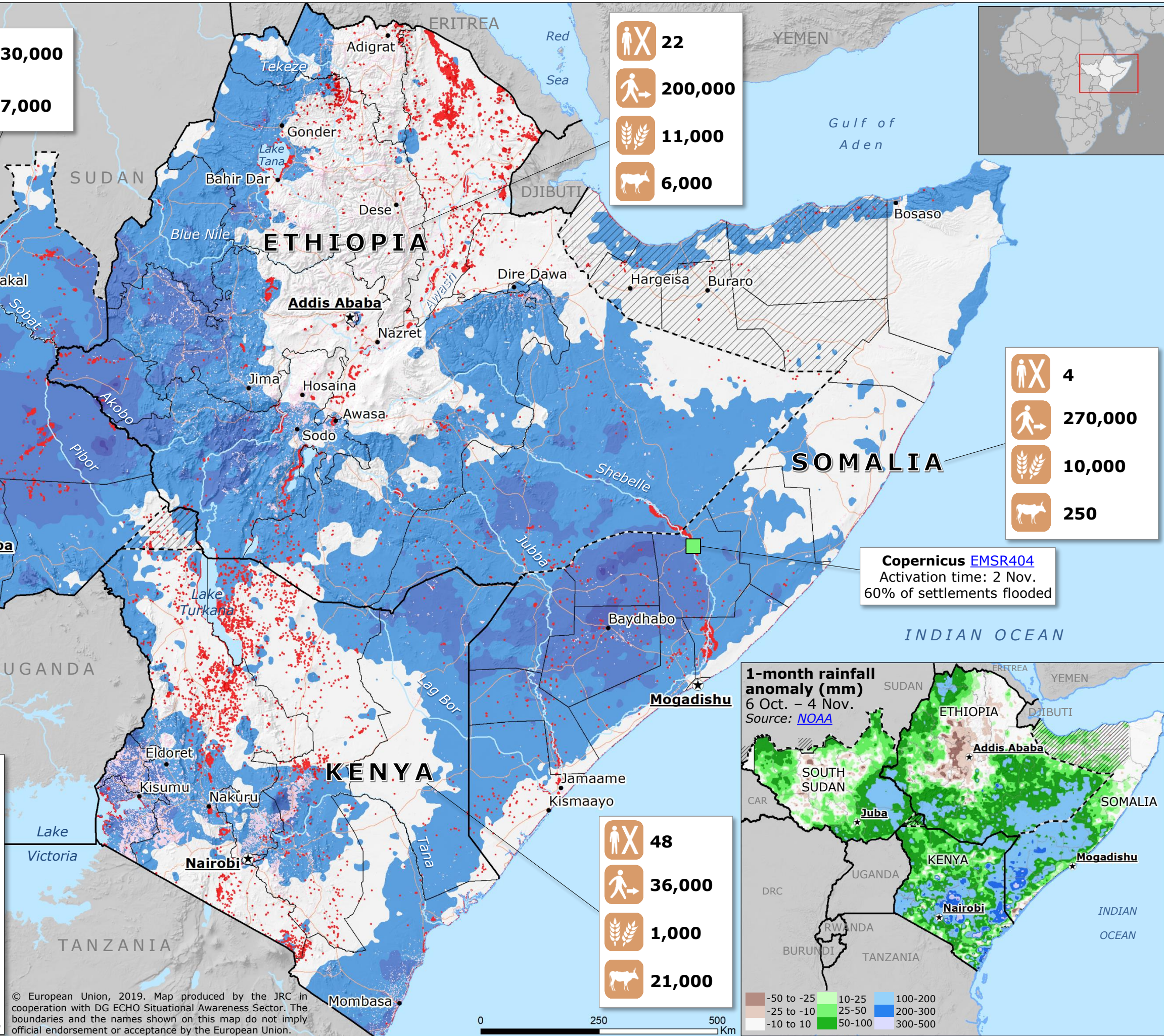
FLOOD DETECTION

1 Oct. – 4 Nov.
Source: NASA-MODIS

- Flooded area
- Copernicus EMSR404 Area of Interest

	Fatalities
	Displaced people
	Flooded farmland (ha)
	Killed livestock
	Populated area
	Disputed area
	Administrative division boundary*
	State boundary
	Disputed State boundary

*Regions in Somalia, Provinces in Kenya, States in South Sudan and Ethiopia



© European Union, 2019. Map produced by the JRC in cooperation with DG ECHO Situational Awareness Sector. The boundaries and the names shown on this map do not imply official endorsement or acceptance by the European Union.