

Historic, archived document

Do not assume content reflects current scientific knowledge, policies, or practices.



62.25 Index

LIBRARY
REC'D
★ FEB 11 1955 ★
U. S. Department of Agriculture



Bridgeport, Marion County, Indiana, Since 1875

143 Years in the Same Family

PRICE LIST

Spring 1955

This Price List contains a complete list of our 1955 Spring Stock. Please make up your order from this price list. For detailed description consult our illustrated color catalogue.

C. M. HOBBS & SONS, Inc.

Phones: Indianapolis BELmont 1812; Plainfield 2644

QUALITY STOCK AT REASONABLE PRICES



WITHOUT TREES AND SHRUBS IT IS ONLY A HOUSE—
WITH THEM A HOME



DRIVE OUT AND VISIT OUR NURSERIES

Concrete Road from Indianapolis to Our Office

A straight drive of only nine miles from Meridian Street directly West on
Washington Street (Old National Road or Terre Haute Road) U.S. No. 40

Hourly Bus Service from Indianapolis

We Do Not Sell Through Agents



MEMBERS OF

AMERICAN ASSOCIATION OF NURSERYMEN
INDIANA ASSOCIATION OF NURSERYMEN
INDIANAPOLIS LANDSCAPE ASSOCIATION

SUBSTITUTION

We have found many of our customers desire us to fill their orders complete by using our good judgement in selecting varieties for them in case we were short of varieties ordered. Many times we can better the selection, but if you do not wish us to use our judgment in selecting varieties to take the place of those that may be exhausted, kindly mark on the face of your order, "No Substitution", and we will gladly refund balance of your remittance.

LOCATION

Six miles from the west corporate line of Indianapolis, on Washington Street, on the Old National Road (U.S. 40), Pennsylvania Railroad. Hourly Bus Service from Indianapolis.

PHONES

Indianapolis: BELmont 1812; Plainfield 2644

VISITORS

You are always welcome and we will be pleased to meet you and show you through our plant, comprising more than 400 acres.

SHIPPING FACILITIES

Pennsylvania Railroad making connection with all lines out of Indianapolis. Ample facilities for shipment by motor freight.

SHIPPING INSTRUCTIONS

ORDERS—All orders are accepted subject to the following terms and conditions. Write plainly and give explicit directions as to address and mode of shipment.

FORWARDING—Shipments will be forwarded exactly as directed; but, where without instructions, we will use our best judgement and forward by shortest and safest route. We recommend that all herbaceous and strawberry plants be shipped by express.

CLAIMS—For damage while in transit or otherwise must be made within five days after the arrival of the consignment.

SHIPPING SEASON—Opens about March 1st in the spring and September 1st in the fall.

INSPECTION AND FUMIGATION—Our stock is regularly inspected and certificate will be sent with each shipment.

PACKING—All goods are carefully packed, thus avoiding risk if delayed in transit. We do not charge for packing.

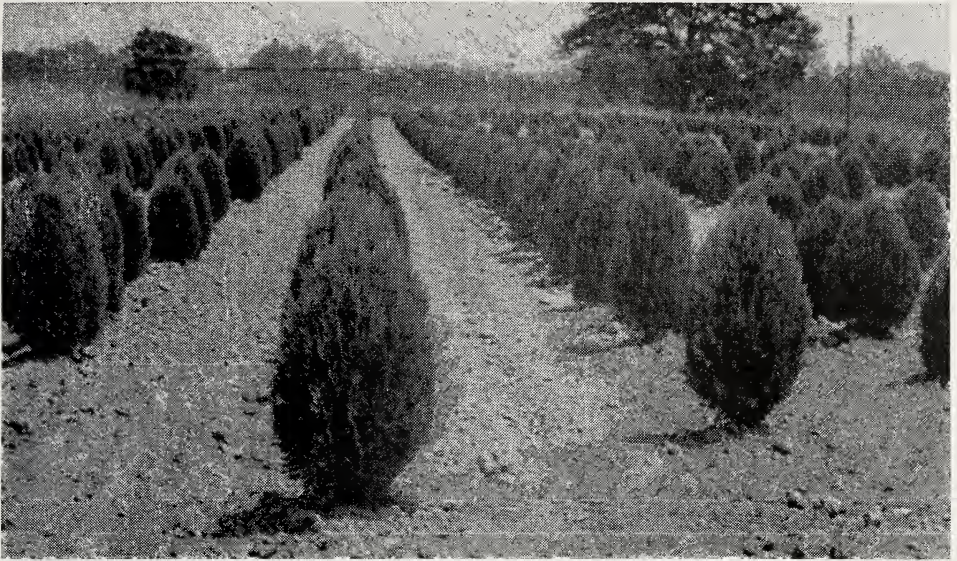
TERMS

CASH WITH ORDER—Except to persons who satisfy us as to their financial responsibility. Accounts are due when bills are rendered, and prompt payments are expected.

PRICES given in this catalog are for the goods F.O.B., Bridgeport, Indiana. **STOCK** selected by our customers at the nurseries will be charged for according to the value of the trees or plants chosen.

EVERGREENS

All evergreens balled and burlapped, transplanted, nursery grown



BIOTA AUREA NANA

Specimen plants of golden foliage—growing to about 5 feet in height.

ARBOR VITAE

	Each
AMERICAN DARK GREEN (Upright)	
18 to 24 inch.....	\$ 3.00
2 to 2½ feet.....	3.50
2½ to 3 feet.....	4.50
3 to 3½ feet.....	5.00
3½ to 4 feet.....	6.00
GLOBE	
12 to 15 inch.....	3.00
15 to 18 inch.....	3.25
ORIENTALIS	
18 to 24 inch.....	2.75
2 to 2½ feet.....	3.00
2½ to 3 feet.....	3.50
3 to 3½ feet.....	4.00
3½ to 4 feet.....	5.00
4 to 4½ feet.....	6.00
ORIENTALIS COMPACTA	
18 to 24 inch.....	3.00
2 to 2½ feet.....	3.50
2½ to 3 feet.....	4.25



JUNIPER CANNARTI

Well sheared and carefully grown to assure you the finest.

ARBOR VITAE (Continued)

PYRAMIDALIS (Upright)

	Each
18 to 24 inch	3.00
2 to 2½ feet.....	3.50
2½ to 3 feet.....	4.50
3½ to 4 feet.....	6.00
4 to 4½ feet.....	7.00
4½ to 5 feet.....	8.00
5 to 6 feet	9.00

SIBERIAN

15 to 18 inch	2.50
18 to 24 inch.....	3.00
2 to 2½ feet	4.00
2½ to 3 feet	4.75

BIOTA

AUREA NANA (Yellow Foliage)

12 to 15 inch	3.00
15 to 18 inch.....	3.75
18 to 24 inch.....	4.25
2 to 2½ feet	5.00



JUNIPER KETELEERI

A beautiful evergreen to use for a hedge as well as a specimen.

JUNIPER

	Each
ASHFORDI	
18 to 24 inch	2.25
2 to 2½ feet	3.00
BURKI (Upright)	
2 to 2½ feet	4.50
2½ to 3 feet	5.25
3 to 3½ feet	6.25
3½ to 4 feet	7.50
CANNARTI (Pyramidal)	
2 to 2½ feet	5.00
2½ to 3 feet	6.00
3 to 3½ feet	6.75
3½ to 4 feet	7.50
4 to 4½ feet	8.50
4½ to 5 feet	10.00
5 to 6 feet	12.00



JUNIPER PFITZER

A favorite of many—a spreading type for foundation, corner and entrance plantings.

JUNIPER (Continued)

	Each
COLUMNARIS (Pyramidal)	
2 to 2½ feet	5.00
2½ to 3 feet	6.00
3 to 3½ feet	6.75
3½ to 4 feet	7.50
4 to 4½ feet	8.50
4½ to 5 feet	10.00
5 to 6 feet	12.00
DEPRESSA PLUMOSA (Spreading)	
15 to 18 inch.....	4.00
18 to 24 inch	5.00
2 to 2½ feet	6.00
FASTIGIATA (Slender Upright)	
18 to 24 inch.....	2.25
2 to 2½ feet	3.00
GLAUCA (Blue Foliage, Upright)	
2 to 2½ feet	5.00
2½ to 3 feet	6.00
3 to 3½ feet	6.75
3½ to 4 feet	7.50
4 to 4½ feet	8.50

RETAIL PRICE LIST — SPRING 1955

HETZI (Blue, Spreading)

	Each
15 to 18 inch	3.75
18 to 24 inch	4.50
2 to 2½ feet	5.50
2½ to 3 feet	6.25

IRISH (Pyramidal)

2 to 2½ feet.....	2.75
-------------------	------

KETELEERI (Pyramidal)

2 to 2½ feet	4.50
2½ to 3 feet	5.50
3 to 3½ feet	6.00
3½ to 4 feet	7.00
4 to 4½ feet	8.00
4½ to 5 feet	9.00
5 to 6 feet	10.00

MASCULA (Pyramidal, Broad Base)

2 to 2½ feet	4.50
2½ to 3 feet	5.50
3 to 3½ feet	6.00
3½ to 4 feet	7.00
4½ to 5 feet	9.00
5 to 6 feet	10.00

MEYERI (Blue, Semi-Spreading)

12 to 15 inch	3.00
15 to 18 inch	3.50
18 to 24 inch	4.50

PFITZERIANA (Spreading)

15 to 18 inch	4.00
18 to 24 inch	5.00
2 to 2½ feet	6.00

PFITZER BLUE (Spreading)

15 to 18 inch	4.25
18 to 24 inch	5.25
2 to 2½ feet	6.50

PFITZER COMPACTA (Spreading)

15 to 18 inch	4.75
18 to 24 inch	5.50
2 to 2½ feet	6.50

PYRAMIDIFORMA (Dundee, Pyramidal)

2 to 2½ feet.....	4.50
2½ to 3 feet.....	5.50
3 to 3½ feet	6.50
3½ to 4 feet	7.50
4 to 4½ feet	8.50
4½ to 5 feet	10.00
5 to 6 feet	12.00

SARGENTI (Spreading)

15 to 18 inch	4.00
18 to 24 inch	5.00

JUNIPER (Continued)

	Each
SCHOTTI	
2½ to 3 feet	5.50
3 to 3½ feet	6.50
3½ to 4 feet	7.50
4 to 4½ feet	8.50
4½ to 5 feet	10.00
STRICTA	
12 to 15 inch	3.00
15 to 18 inch	3.50
18 to 24 inch	4.25
2 to 2½ feet	5.00
VON EHRON	
15 to 18 inch	4.00
18 to 24 inch	4.75
2 to 2½ feet	5.75
2½ to 3 feet	7.00

PINE (Grow large, need room)

MUGHO	
10 to 12 inch	3.50
12 to 15 inch	4.00
15 to 18 inch	5.00
SCOTCH	
2 to 3 feet	6.00
3 to 4 feet	7.50
WHITE	
2 to 3 feet	6.00

SPRUCE

NORWAY	
18 to 24 inch	3.00
2 to 2½ feet	4.00

TAXUS (Good in shade or sun)

BROWNI (Spreading)	
15 to 18 inch	7.00
18 to 24 inch	9.00
CAPITATA (Pyramidal)	
15 to 18 inch	6.50
18 to 24 inch	7.50
2 to 2½ feet	9.50
2½ to 3 feet	13.00
3 to 3½ feet	18.00
3½ to 4 feet	20.00
CUSPIDATA (Spreading)	
15 to 18 inch	6.50
18 to 24 inch	9.00
2 to 2½ feet	11.00
HATFIELD (Upright)	
15 to 18 inch	6.00
18 to 24 inch	7.50
2 to 2½ feet	9.00



EUONYMUS PATENS AND EUONYMUS RADICANS ERECTUS

Fine for fillers with evergreens or to made a low hedge.

HICKSI (Upright)	Each
15 to 18 inch	6.00
18 to 24 inch	7.50
2 to 2½ feet	9.00
HONNEWELLIANA (Spreading)	
15 to 18 inch	7.00
18 to 24 inch	9.00
INTERMEDIA (Spreading)	
12 to 15 inch	6.00
15 to 18 inch	7.00
18 to 24 inch	9.00
2 to 2½ feet	11.00
OVATA (Upright)	
15 to 18 inch	6.00
18 to 24 inch	7.50

HEMLOCK

18 to 24 inch	5.00
2 to 2½ feet	6.50
2½ to 3 feet	8.50
3 to 3½ feet	9.50
3½ to 4 feet	11.00
4 to 4½ feet	12.50

BROADLEAF EVERGREENS

BARBERRY

JULIANAE

12 to 15 inch (B & B)	2.50
15 to 18 inch (B & B)	3.00
18 to 24 inch (B & B)	3.50
2 to 2½ feet (B & B)	4.00

MENTORENSIS

12 to 15 inch	1.00
15 to 18 inch	1.15
18 to 24 inch	1.40
2 to 2½ feet	1.75



BARBERRY MENTORENSIS

Bushy plants to use for hedges or specimens.

EUONYMUS

COLORATUS

	Each
15 to 18 inch (B & B)	3.00
18 to 24 inch (B & B)	3.50

PATENS (Upright Dwarf)

12 to 15 inch (B & B)	3.00
15 to 18 inch (B & B)	3.50
18 to 24 inch (B & B)	4.00

RADICANS ERECTUS

12 to 15 inch (B & B)	2.50
15 to 18 inch (B & B)	3.00
18 to 24 inch (B & B)	3.50

VEGETUS (Spreading)

12 to 15 inch (B & B)	2.50
15 to 18 inch (B & B)	3.00

ILEX

OPACA (American Holly)

2 to 3 feet (B & B)	8.50
---------------------------	------

ROTUNDIFOLIA

15 to 18 inch (B & B)	5.50
18 to 24 inch (B & B)	6.50

MAHONIA AQUIFOLIA

	Each
15 to 18 inch (B & B)	3.75
18 to 24 inch (B & B)	4.50

VIBURNUM

BURKWOODI

18 to 24 inch (B & B)	3.75
2 to 3 feet (B & B)	4.50

RHYTIDOPHYLLUM

15 to 18 inch (B & B)	3.50
18 to 24 inch (B & B)	4.00
2 to 3 feet (B & B)	5.00

CONTAINER GROWN PLANTS

ONE GALLON CANS

	Each
AZALEA	3.25
EUONYMUS VEGETUS	2.00
MAHONIA	2.50
RHODODENDRON	4.25
Catawbiense Grandiflora (Lilac)	
Dr. H. C. Dresselhuys (Red)	
Rosem Elegans (Rose)	

TWO GALLON CANS

ILEX OPACA	3.00
PYRACANTHA	
LALANDI	2.75
THORNLESS	3.00

DECIDUOUS TREES

Feet refers to height of tree; inch refers to diameter of tree; B & B trees are dug with a ball of earth and burlapped. (All trees listed over 8/10 feet have been root pruned within last two and three years.)

BALLED AND BURLAPPED CHARGES

2 to 3 feet	\$.90
3 to 4 feet	1.25
4 to 5 feet	1.50
5 to 6 feet	2.00
6 to 8 feet	2.75
8 to 10 feet	3.75
1¼ to 1½ inch caliper	4.50
1½ to 2 inch caliper	5.75
2 to 2½ inch caliper	7.00
2½ to 3 inch caliper	8.25
3 to 3½ inch caliper	13.00
3½ to 4 inch caliper	18.00

ASH

AMERICAN WHITE		Each
5 to 6 feet		2.00
6 to 8 feet		2.50
8 to 10 feet		3.00
1¼ to 1½ inch		4.00
1½ to 2 inch		5.00
EUROPEAN MOUNTAIN (Orange Berries in Fall)		
5 to 6 feet		3.00
6 to 8 feet		3.50
8 to 10 feet		4.00
GREEN		
5 to 6 feet		2.00
6 to 8 feet		2.50
8 to 10 feet		3.00

BIRCH

CUT LEAF WEeping		
5 to 6 feet (B & B)		4.50
6 to 8 feet (B & B)		6.00
8 to 10 feet (B & B)		7.50
EUROPEAN CLUMP BIRCH (3 STEM)		
4 to 5 feet		4.00

CORNUS FLORIDA (Dogwood)

WHITE FLOWERING		
2 to 3 feet (B & B)		4.00
3 to 4 feet (B & B)		5.00
4 to 5 feet (B & B)		7.00
5 to 6 feet (B & B)		9.00
RED FLOWERING		
2 to 3 feet (B & B)		5.00
3 to 4 feet (B & B)		7.00
4 to 5 feet (B & B)		9.00

RETAIL PRICE LIST — SPRING 1955

CHINESE CHESTNUT

	Each
3 to 4 feet	3.50
4 to 5 feet	4.00
5 to 6 feet	5.00
6 to 8 feet	6.00
8 to 10 feet	7.00

ELM (CHINESE)

5 to 6 feet	2.00
6 to 8 feet	2.75
8 to 10 feet	3.50
1¼ to 1½ inch	4.50
1½ to 2 inch	5.50

FLOWERING CHERRY

KWANZAN

3 to 4 feet	3.00
4 to 5 feet	4.00
5 to 6 feet	5.00

WEEPING

4 to 5 feet	7.50
-------------------	------

FLOWERING CRAB

(Aldenham, Atrosanguinea, Dolga, Eleyi, Floribunda, Hopa,
 Red Silver, Scheideckeri, Spectabilis, Von Eseltine)

In variety, 3 to 4 feet (B & B 80c extra)	1.50
In variety, 4 to 5 feet (B & B \$1.00 extra)	1.75
In variety, 5 to 6 feet B & B \$1.50 extra)	2.25
In variety, 6 to 7 feet (B & B \$2.50 extra)	3.00

(Almey, Sargenti, Zumi Calicarpa)

3 to 4 feet (B & B 80c extra)	2.00
4 to 5 feet (B & B \$1.00 extra)	2.25
5 to 6 feet (B & B \$1.50 extra)	3.00

BECHTELS DBL. FLG.

2 to 3 feet (B & B .70 extra)	1.75
3 to 4 feet (B & B .80 extra)	2.25
4 to 5 feet (B & B \$1.00 extra)	3.00

FLOWERING PEACH (Red)

3 to 4 feet	1.75
5 to 6 feet (Pink and Red)	2.50

HACKBERRY

5 to 6 feet	3.00
6 to 8 feet	3.50
8 to 10 feet	4.50
1½ to 2 inch	8.00

HONEYLOCUST

THORNLESS

6 to 8 feet	3.00
8 to 10 feet	4.00
1¼ to 1½ inch	5.00
8 to 10 feet (Special)	9.00

MORAINÉ (Thornless, No Seed Pods) (Patented)

5 to 6 feet (Whips)	5.00
6 to 8 feet	7.00
8 to 10 feet	8.50

PYRAMIDAL HORNBEAM

	Each
3 to 4 feet (B & B)	6.50
4 to 5 feet (B & B)	8.00

LINDEN (American)

5 to 6 feet	3.00
6 to 8 feet	3.50

MAGNOLIA

LENNEI

3 to 4 feet (B & B)	9.50
---------------------------	------

NIGRA

2 to 3 feet (B & B)	6.50
---------------------------	------

RUSTICA RUBRA

2 to 3 feet (B & B)	6.50
---------------------------	------

SOULANGEANA (Pink)

2 to 3 feet (B & B)	6.50
3 to 4 feet (B & B)	9.00
4 to 5 feet (B & B)	10.50
5 to 6 feet (B & B)	12.50

STELLATA

2 to 3 feet	10.00
-------------------	-------

MAPLE

CRIMSON KING (Patented)

5 to 6 feet	5.00
6 to 8 feet	6.00

GINNALA

18 to 24 inch	1.50
2 to 3 feet	2.00

JAPANESE RED LEAF (Dwarf Ornamental)

12 to 15 inch (B & B)	4.00
15 to 18 inch (B & B)	5.00

NORWAY

6 to 8 feet	5.00
8 to 10 feet	6.00

RUBRUM (Red Fall Foliage)

5 to 6 feet	4.00
6 to 8 feet	5.00
8 to 10 feet	6.00
1¼ to 1½ inch	7.50

SCHWEDLERI (Red Spring Foliage)

5 to 6 feet	3.75
6 to 8 feet	5.00

SOFT OR SILVER

5 to 6 feet	2.25
6 to 8 feet	2.75
8 to 10 feet	3.50

SUGAR

6 to 8 feet	4.50
8 to 10 feet	5.00
1¼ to 1½ inch	6.00
1½ to 2 inch	8.00

RETAIL PRICE LIST — SPRING 1955

MIMOSA

3 to 4 feet		Each
4 to 5 feet		2.00
5 to 6 feet		2.50
6 to 8 feet		3.00
6 to 8 feet		4.00

OAK

PIN (Palustris)

5 to 6 feet		4.00
6 to 8 feet		5.00
8 to 10 feet		6.50

SCARLET

5 to 6 feet		4.00
6 to 8 feet		5.00

POPLAR (Lombardy)

		5 to 49
5 to 6 feet	Each	Each
6 to 8 feet	1.00	.85
8 to 10 feet	1.25	1.00
10 to 12 feet	1.50	1.25
1½ to 2 inch	2.00	1.75
	2.50	

PRUNUS (Flowering Plum)

✓ **CISTENA**

2 to 3 feet		Each
3 to 4 feet		1.50
4 to 5 feet		1.75
		2.00

✓ **NEWPORT**

3 to 4 feet		1.75
4 to 5 feet		2.00
5 to 6 feet		2.50
6 to 7 feet		3.00

TRILOBA

2 to 3 feet		1.50
3 to 4 feet		1.75
4 to 5 feet		2.00
5 to 6 feet		2.50

RED BUD

2 to 3 feet (B & B \$.90 extra)		1.75
3 to 4 feet (B & B \$1.25 extra)		2.50
4 to 5 feet (B & B \$1.50 extra)		3.50
5 to 6 feet (B & B \$1.95 extra)		5.00
6 to 7 feet (B & B \$2.75 extra)		6.50

SYCAMORE (Common)

5 to 6 feet		2.75
6 to 8 feet		3.25
1¼ to 1½ inch		4.75
1½ to 2 inch		6.50



PRUNUS NEWPORT

Many fine specimen trees with excellent color of foliage.

SWEET GUM (Liquidamber)

	Each
3 to 4 feet (B & B)	4.00
4 to 5 feet (B & B)	5.00
5 to 6 feet (B & B)	6.50
8 to 10 feet (B & B)	12.50
1¼ to 1½ inch (B & B)	16.00
1½ to 2 inch (B & B)	20.00
2 to 2½ inch (B & B)	24.00
2½ to 3 inch (B & B)	28.00

THORN (CRATAEGUS)

CORDATA (Washington Hawthorne)

2 to 3 feet (B & B)	5.00
3 to 4 feet (B & B)	7.00
4 to 5 feet (B & B)	9.00

RETAIL PRICE LIST — SPRING 1955

THORN (Continued)

CRUSGALLI (Cockspur Thorn)

Each

3 to 4 feet (B & B)	7.00
4 to 5 feet (B & B)	9.00
5 to 6 feet (B & B)	10.50

TOBA

4 to 5 feet (B & B)	9.00
5 to 6 feet (B & B)	10.50

TULIP TREE

4 to 5 feet (B & B \$1.50 extra)	3.00
5 to 6 feet (B & B \$2.00 extra)	3.50

WILLOW

NIOBE

3 to 4 feet	1.25
4 to 5 feet	1.50

PUSSY

3 to 4 feet	1.50
4 to 5 feet	1.75
5 to 6 feet	2.00

THURLOW (Weeping)

5 to 49
Each Each

4 to 5 feet	1.50	1.25
5 to 6 feet	1.75	1.50
6 to 8 feet	2.25	2.00
8 to 10 feet	2.75	2.50
10 to 12 feet	3.25	3.00

WISCONSIN

Each

4 to 5 feet	1.50
5 to 6 feet	1.75
6 to 8 feet	2.25
8 to 10 feet	2.75

TREE WISTERIA

3 to 4 feet (B & B)	10.00
---------------------------	-------

ORNAMENTAL SHRUBS

Most of our shrubs are three and four years old; much more stocky and better than one and two year old plants usually offered.

BALLED AND BURLAPPED CHARGES

18 to 24 inch	\$.75
2 to 3 feet90
3 to 4 feet	1.25
4 to 5 feet	1.50
5 to 6 feet	2.00

ALMONDS, PINK

	Each
12 to 18 inch85
18 to 24 inch	1.00
2 to 3 feet	1.25
3 to 4 feet	1.50

ALTHEA (Red, White, Pink, Blue) (Hisbiscus)

2 to 3 feet	1.00
3 to 4 feet	1.25

ARALIA PENTAPHYLLA

12 to 18 inch75
18 to 24 inch85
2 to 3 feet	1.00

BARBERRY MENTORENSIS (See Broadleaf Evergreens)

BARBERRY

	Each	5 to 49 Each
RED LEAF		
10 to 12 inch65	.60
12 to 15 inch75	.70
15 to 18 inch85	.80
18 to 24 inch	1.00	.95

THUNBERGI

10 to 12 inch55	.50
12 to 15 inch65	.60
15 to 18 inch80	.75
18 to 24 inch95	.90

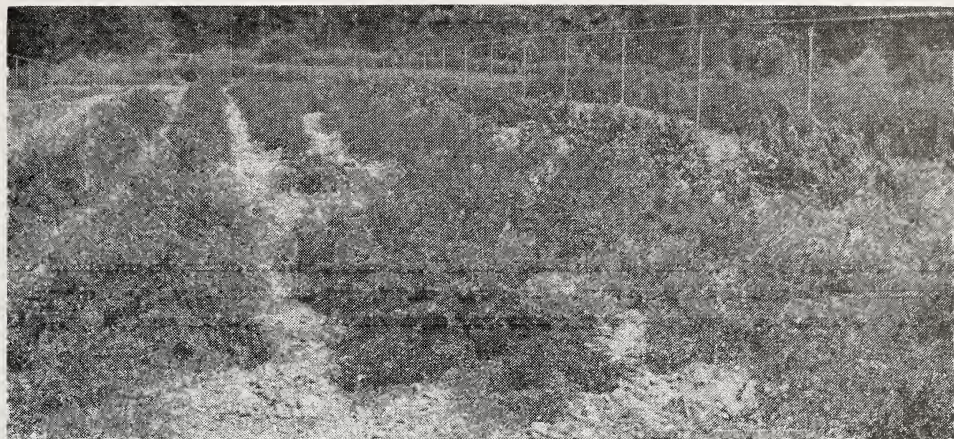
BEAUTY BUSH (KOLKWITZIA) PINK

	Each
12 to 18 inch85
18 to 24 inch	1.00
2 to 3 feet	1.15
3 to 4 feet	1.40

BUDDLEIA

EMPIRE BLUE, PINK CHARMING, ROYAL RED, WHITE CLOUD

No. 1	1.00
-------------	------



COTONEASTER APICULATA

In sizes from 15 inches to 3 feet. A low shrub to use with evergreens
Glossy foliage, red berries.

CALYCANTHUS (ALLSPICE)

	Each
2 to 3 feet	1.25

CARAGANA ARBORESCENS

12 to 18 inch75
18 to 24 inch90

CORNUS (DOGWOOD)

PANICULATA

12 to 18 inch75
18 to 24 inch90

SANGUINEA

18 to 24 inch90
2 to 3 feet	1.00
3 to 4 feet	1.25

SIBERICA (Bright Red Branched)

12 to 18 inch75
18 to 24 inch90
2 to 3 feet	1.00

STOLONIFERA

12 to 18 inch75
18 to 24 inch90
2 to 3 feet	1.00

CORYLUS (Purple Filbert)

18 to 24 inch	1.25
2 to 3 feet	1.50

AMERICANUM

3 to 4 feet	2.00
-------------------	------

COTONEASTER

	Each
ACUTIFOLIA	
18 to 24 inch	1.25
2 to 3 feet	1.50
APICULATA	
12 to 15 inch (B & B)	3.00
15 to 18 inch (B & B)	3.50
18 to 24 inch (B & B)	4.00
2 to 2½ feet (B & B)	4.50
2½ to 3 feet (B & B)	5.00
DIVARICATA	
15 to 18 inch (B & B)	2.00
18 to 24 inch (B & B)	2.50
2 to 3 feet (B & B)	3.50
3 to 4 feet (B & B)	4.50

CYDONIA JAPONICA RUBRA (Red) (Japan Quince)

12 to 18 inch80
18 to 24 inch	1.00
2 to 3 feet	1.25

CRIMSON KING (SPECIAL)

18 to 24 inch	1.75
---------------------	------

DEUTZIA

CRENATA

2 to 3 feet	1.00
3 to 4 feet	1.25

GRACILIS

12 to 15 inch	1.00
15 to 18 inch	1.25

LEMOINE

2 to 2½ feet	1.10
--------------------	------

PRIDE OF ROCHESTER

18 to 24 inch90
2 to 3 feet	1.00
3 to 4 feet	1.25

EUONYMUS

ALATUS

15 to 18 inch	1.25
18 to 24 inch	1.50
2 to 3 feet	2.00

ALATUS COMPACTA (Upright)

12 to 15 inch	1.35
15 to 18 inch	1.75
18 to 24 inch	2.00

EUONYMUS PATENS, VEGETUS (See Broadleaf Evergreens)

EXOCHORDA

2 to 3 feet	1.10
-------------------	------

RETAIL PRICE LIST — SPRING 1955

FORSYTHIA

	Each
FORTUNEI, SPECTABILIS, SPRING GLORY, SUSPENSIA	
18 to 24 inch90
2 to 3 feet	1.00
3 to 4 feet	1.20
4 to 5 feet	1.40

HONEYSUCKLE (Lonicera) BUSH FORM

TARTARIAN (Pink); ZABELI (Red); FRAGRANTISSIMA (Winter Honey-suckle (White)); TARTARIAN (Red)	
12 to 18 inch75
18 to 24 inch90
2 to 3 feet	1.00
3 to 4 feet	1.25
4 to 5 feet	1.50

HYDRANGEA

ARBORESCENS	
12 to 18 inch85
18 to 24 inch	1.00
PANICULATA GRANDIFLORA	
10 to 12 inch60
12 to 18 inch85
2 to 3 feet	1.20

KERRIA JAPONICA

12 to 18 inch90
18 to 24 inch	1.10
2 to 3 feet	1.25

LILAC

PURPLE, PERSIAN, WHITE	
18 to 24 inch	1.00
2 to 3 feet	1.25
3 to 4 feet	1.50
4 to 5 feet	1.75
NAMED FRENCH VARIETIES (Red, Purple, Pink, White, Blue)	
18 to 24 inch	1.75
2 to 3 feet	2.00
3 to 4 feet	2.50

MAHONIA AQUIFOLIA (See Broadleaf Evergreens)

PHILADELPHUS (Syringa) Mock Orange

AUREA	
12 to 15 inch	1.50
15 to 18 inch	1.75
CORONARIUS	
12 to 18 inch75
18 to 24 inch90
2 to 3 feet	1.00
LEMOINE	
12 to 18 inch75
18 to 24 inch90
2 to 3 feet	1.00
VIRGINAL	
12 to 18 inch75
18 to 24 inch90
2 to 3 feet	1.00
3 to 4 feet	1.25

PRIVET

	5-49	50-100
	Each	Each
AMUR RIVER (North)		
12 to 18 inch20	.15
18 to 24 inch25	.20
2 to 3 feet30	.25
3 to 4 feet35	.30

IBOLIUM

12 to 18 inch20	.15
18 to 24 inch25	.20
2 to 3 feet30	.25
3 to 4 feet35	.30

IBOTA

	Each	
12 to 18 inch70	
18 to 24 inch80	
2 to 3 feet90	
3 to 4 feet	1.00	

REGELS

12 to 18 inch70
18 to 24 inch85
2 to 3 feet	1.00

RHAMNUS CATHARTICA

12 to 18 inch	1.00
18 to 24 inch	1.25
2 to 3 feet	1.50

RHODOTYPHUS (White Kerria)

KERRIOIDES

18 to 24 inch95
2 to 3 feet	1.10

RHUS (SUMAC)

CANADENSIS

18 to 24 inch90
2 to 3 feet	1.00
3 to 4 feet	1.25

COTINUS (Smoke Tree)

2 to 3 feet	1.00
3 to 4 feet	1.25
4 to 5 feet	1.50
5 to 6 feet	2.00

SNOWBERRY

VULGARIS (Indian Currant)

18 to 24 inch80
2 to 3 feet90

SPIREA

ANTHONY WATERER (Pink)

10 to 12 inch75
12 to 18 inch90
18 to 24 inch	1.00

RETAIL PRICE LIST — SPRING 1955

FROEBELI (Pink)	Each
10 to 12 inch60
12 to 18 inch75
18 to 24 inch90
THUNBERGI (Early White)	
12 to 18 inch75
18 to 24 inch90
VAN HOUTTEI (White)	
12 to 18 inch70
18 to 24 inch80
2 to 3 feet90
3 to 4 feet	1.00

TAMARIX

HISPIDA (Pink)	
4 to 5 feet	1.25

VIBURNUM (Snowball)

AMERICANUM (American Cranberry)	
18 to 24 inch	1.00
2 to 3 feet	1.25
3 to 4 feet	1.50
4 to 5 feet	1.75

VIBURNUM BURKWOODI (See Broadleaf Evergreens)

CARLESI	
15 to 18 inch (B & B)	3.25
18 to 24 inch (B & B)	3.75

DENTATUM (Arrow-wood)	
18 to 24 inch80
2 to 3 feet90
3 to 4 feet	1.25

DILITATUM	
2 to 3 feet	1.25

JUDDI	
15 to 18 inch (B & B)	3.25

LANTANA	
12 to 24 inch	1.00
2 to 3 feet	1.25

LENTAGO	
2 to 3 feet	1.25
3 to 4 feet	1.50
4 to 5 feet	1.75

PLICATUM	
18 to 24 inch	1.00
2 to 3 feet	1.25

SIEBOLDI	
18 to 24 inch	1.00
2 to 3 feet	1.25

STERILIS (Common Snowball)	
18 to 24 inch	1.00
2 to 3 feet	1.25
3 to 4 feet	1.50

TOMENTOSUM	
18 to 24 inch	1.00
2 to 3 feet	1.25
3 to 4 feet	1.50

WEIGELA

	Each
BRISTOL RUBY (Patented)	
12 to 18 inch	1.00
18 to 24 inch	1.25
2 to 3 feet	1.50
3 to 4 feet	1.75
EVA RATHKE	
2 to 3 feet	1.15
ROSEA (Pink)	
12 to 18 inch80
18 to 24 inch90
2 to 3 feet	1.00
3 to 4 feet	1.25

WITCH HAZEL

12 to 18 inch90
18 to 24 inch	1.00
2 to 3 feet	1.25
3 to 4 feet	1.50

VINES

	Each	Each Per 10
Ampelopsis (Boston Ivy)85	.75
Celastris Scandens (Bittersweet)75	.70
Clematis	1.25	
Henryi (white); Jackmani (purple); Mme. Andre (red).		
English Ivy (Pots)	1.00	
Halls Honeysuckle75	
Purple Wisteria Grafts	1.75	
Silver Lace Vine	1.00	

PEONIES IN EARLY FALL

ROSES

HYBRID TEA ROSES (Northern Grown)

	Each	Per 10	Per 25
EVERBLOOMING —Bloom first year, strong two-year			
No. 1 plants, none better	1.35	12.50	25.00
RED —Ami Quinard (darkest red); Christopher Stone; Crimson Glory; E. G. Hill; Etoile de Hollande; Grauss au Teplitz; Grenoble; McGredy's Scarlet; Margaret McGredy; Red Radiance.			
PINK —Countess Vandal; The Doctor; Editor McFarland; Edith Nellie Perkins; Picture; Pink Radiance.			
WHITE —K. A. Victoria; McGredy's Ivory.			
YELLOW —Eclipse; Golden Rapture; Joanna Hill; McGredy's Yellow; Mrs. E. P. Thom; Mrs. P. S. du Pont; Sœur Therese.			
MULTI-COLOR —Autumn; Condessa de Sastago; Duq de Penaranda; President Hoover; Sam McGredy, Talisman.			

PATENTED HYBRID TEA ROSES

	Per 10
Charlotte Armstrong, brilliant red	2.25
Charles Mallerin, dark crimson	2.75
Confidence, light pink to yellow	2.35
Chrysler Imperial, deep red	2.50
Forty-Niner, multi-colored	2.50
Fred Howard, rich yellow	2.50
Golden Scepter, golden yellow	2.25
Helen Traubel, luminous apricot	2.50
Lowell Thomas, double canary yellow	2.00
Mirandy, dark, red-black shading	2.25
Mojave, apricot-orange	2.75
New Yorker, velvety scarlet	2.00
Nocturne, cardinal, red-shaded crimson	2.00
Peace, golden yellow-shaded pink	2.25
President Eisenhower, rose red	2.50
Show Girl, deep pink	2.15
Sutter's Gold, yellow shaded orange and red, very fragrant.....	2.15
Tallyho, bright pink to crimson	2.15
Tiffany, pale pink	2.75
Tom Breneman, coral pink	2.35

POLYANTHA ROSES

	Each	Per 10 Each	Per 25
(Baby Roses)	1.35	1.25	25.00
Alain, (carmine red); Else Poulson (rose pink); Golden Salmon; Ideal; Lafayette (red).			

R O S E S

PATENTED FLORIBUNDA ROSES

	Each
Betty Prior, red, turning pink	1.50
Chatter, brilliant red	1.50
Fashion, coral overlaid gold	2.00
Goldilocks,	1.50
Jiminy Cricket, apricot orange	2.50
Ma Perkins, red and yellow, turning pink	2.25
Pink Bountiful, begonia pink	2.00
Pinocchio, salmon pink	1.50
Red Pinocchio	1.50
Summer Snow, snow white	1.50
Vogue, cherry coral	2.00
World's Fair, deep crimson to scarlet	1.50

GRANDIFLORA ROSES (Patented)

Queen Elizabeth, pure pink	3.00
----------------------------------	------

CLIMBING ROSES

	Each	Per 10 Each
.....	1.25	1.15

American Beauty (red); Blaze (red); Countess Vandal (multi-color); Doubloons (yellow); New Dawn (pink); Pauls Scarlet (one of the best); Silver Moon; E. P. Thom; White Dawn.

PATENDED CLIMBING ROSES

	Each
Crimson Glory	2.50
Goldilocks	2.50
Dr. J. H. Nichalos, deep rose pink	2.25
Peace, golden yellow shaded pink	2.00

FRUIT DEPARTMENT

APPLES

(Bold Type Indicates Summer and Fall Varieties)

Benoni, Cortland, Db1. Red Delicious, **Red Duchess**, Polly Eades, Golden Sweet, Golden Delicious, Grimes Golden, Hyslop Crab, Jonathan, Ida Red, **Lodi**, Maiden Blush, **Summer Rambo**, Red Rome Beauty, Staymens Wine-sap, Turley, Red Wealthy, York Imperial.

	Each	Per 10
6 to 7 feet (extra size)	2.00	17.50
5 to 6 feet	1.75	15.00
4 to 5 feet	1.50	12.50
3 to 4 feet	1.25	10.00

→ DWARF APPLE..... 2.50

RETAIL PRICE LIST — SPRING 1955

APRICOT

COFFING

	Each
5 to 6 feet	2.00
4 to 5 feet	1.75

CHERRIES

SOUR CHERRY

	Each	Per 10
Super Size, Montmorency	2.50	22.50
Extra Size, Montmorency	2.25	20.00
5 to 6 feet, Early Richmond	2.00	17.50
4 to 5 feet, Early Richmond	1.75	15.00
3 to 4 feet, Early Richmond	1.50	12.50

SWEET CHERRY

	Each
5 to 6 feet	2.00

PEACHES

Champion, Elberta, Golden Jubilee,
Hale Haven, J. H. Hale, Red Haven
Shippers Late Red

	Each	Per 10
5 to 6 feet	1.75	15.00
4 to 5 feet	1.50	12.50
3 to 4 feet	1.25	10.00
2 to 3 feet	1.00	

PEARS

Anjou, Bartlett, Duchess, F. Beauty, Kieffer, Seckel

6 to 7 feet	2.00	17.50
5 to 6 feet	1.75	15.00
4 to 5 feet	1.50	12.50

PLUMS

Bradshaw (blue); Burbank (red); German Prune (blue); Green Gage;
Lombard (blue); Shropshire (blue); Stanley Prune (blue).

6 to 7 feet	2.25	20.00
5 to 6 feet	2.00	17.50
4 to 5 feet	1.75	15.00
3 to 4 feet	1.50	12.50

CURRENTS, TWO YEAR No. 1

Fays60	.50
Red Lake75	.65

GOOSEBERRIES, TWO YEAR No. 1

Downing75	.65
---------------	-----	-----

RASPBERRIES

	Each	5-24 Each	25-49 Each	50-100 Each
Cumberland (Black)25	.20	.15	.10
Indian Summer (Red Everbearing) Transplants.....	.30	.25	.20	.15
Latham (Red) Transplants30	.25	.20	.15

BLACKBERRIES

Eldorado25	.20	.15	.10
----------------	-----	-----	-----	-----

BLUEBERRIES

4 year (bearing age) in pots	Each	2.00
------------------------------------	------	------

ASPARAGUS TWO YEAR No. 1

	Each	5-24	25-49	50-100
Washington20	.15	.10	.07

RHUBARB

TWO YEAR

	Each	Per 10
Chipmans70	6.00
McDonald70	6.00
Victoria35	2.50

PERSIMMONS

GRAFTED VARIETIES—Glidewell, Manly, Ruby

	Each
18 to 24 inch (B & B \$.60 extra).....	2.00
2 to 3 feet (B & B \$.75 extra).....	2.50
3 to 4 feet (B & B \$1.00 extra).....	3.00
4 to 5 feet (B & B \$1.50 extra).....	3.50
5 to 6 feet (B & B \$2.00 extra).....	5.00
6 to 7 feet (B & B \$2.50 extra).....	6.00

GRAPES

Agawam (Red), Brighton (Red), Caco (Red), Catawba (Red),
 Concord (Black), Delaware (Red), Fredonia (Black),
 Niagara (White), Worden (Black)

	Each	Per 10
Two Year No. 1.....	.45	3.50

STRAWBERRIES

(APRIL 1)

	Per 25	Per 50	Per 100	Per 500	Per 1000
Blakemore, little tart, large, splendid bearer.....	1.25	2.00	3.50	12.50	20.00
Dunlap, sweet, medium size	1.25	2.00	3.50	12.50	20.00
Dorsett, large, good bearer	1.25	2.00	3.50	12.50	20.00
Fairfax, good table berry	1.25	2.00	3.50	12.50	20.00
Premier, good size, good canner	1.25	2.00	3.50	12.50	20.00
Robinson, especially good for freezing.....	1.25	2.00	3.50	12.50	20.00
Tennessee Beauty, midseason, glossy red, good for freezing	1.25	2.00	3.50	12.50	20.00

EVERBEARING VARIETIES:

Gem, large, good quality, good plant maker.....	2.50	3.00	5.00	20.00
Sreamliner, excellent quality	2.50	3.00	5.00	20.00
		Per 25	Per 50	Per 100
Red Rich, Everbearing, Patent No. 993, large, firm, good color, excellent flavor, perfect for freezing		5.00	8.50	15.00

PEAT MOSS

15 bushel bale	6.00
One-half bale	4.25
One-fourth bale	3.00

