



2483  
9







くせん





丹右衛門が  
 女房  
 小助  
 賤  
 破門  
 娘  
 深雪



近江の國の郷土  
 筑摩破門が家来  
 雁木丹右衛門

三  
 三

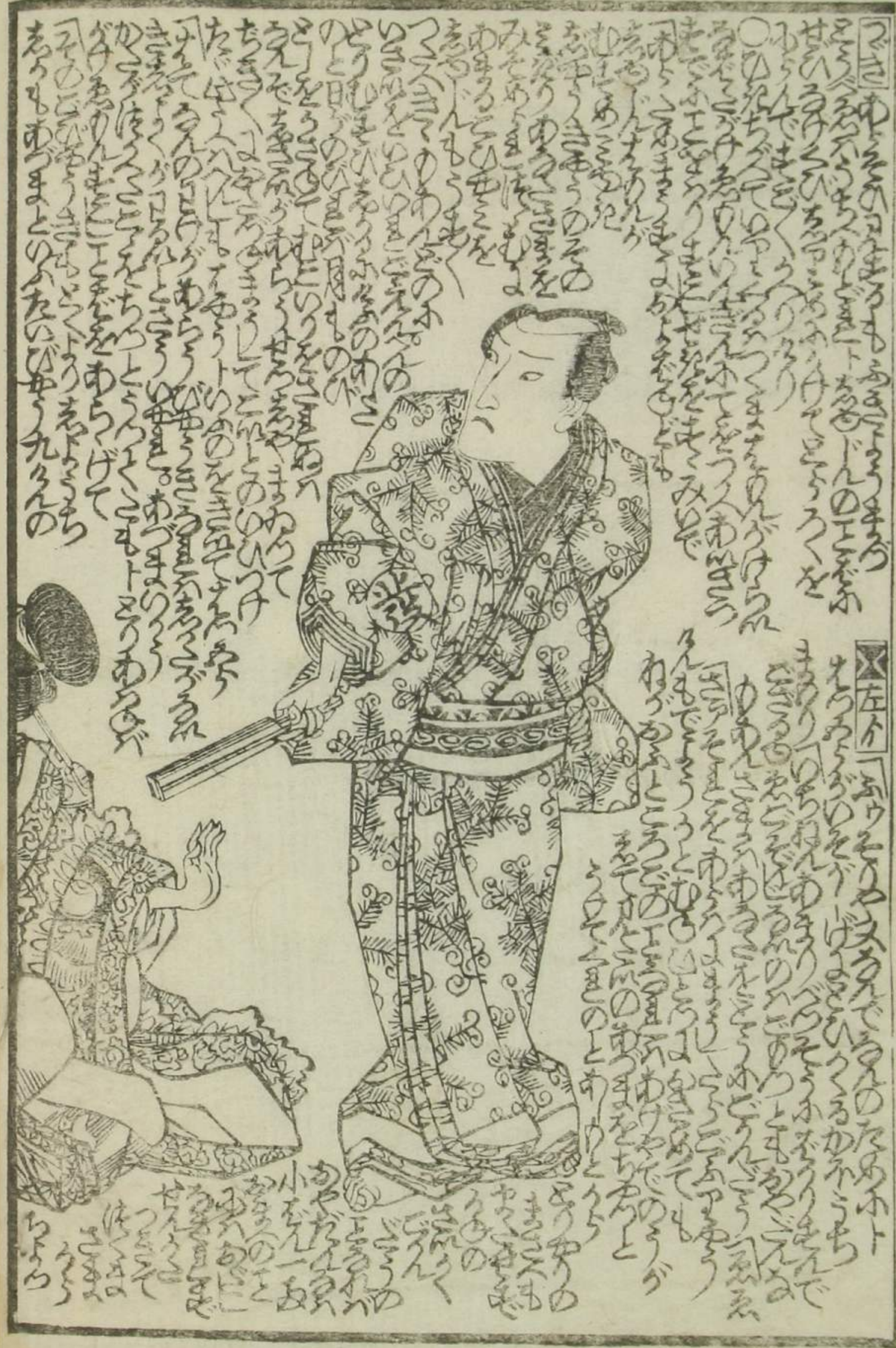


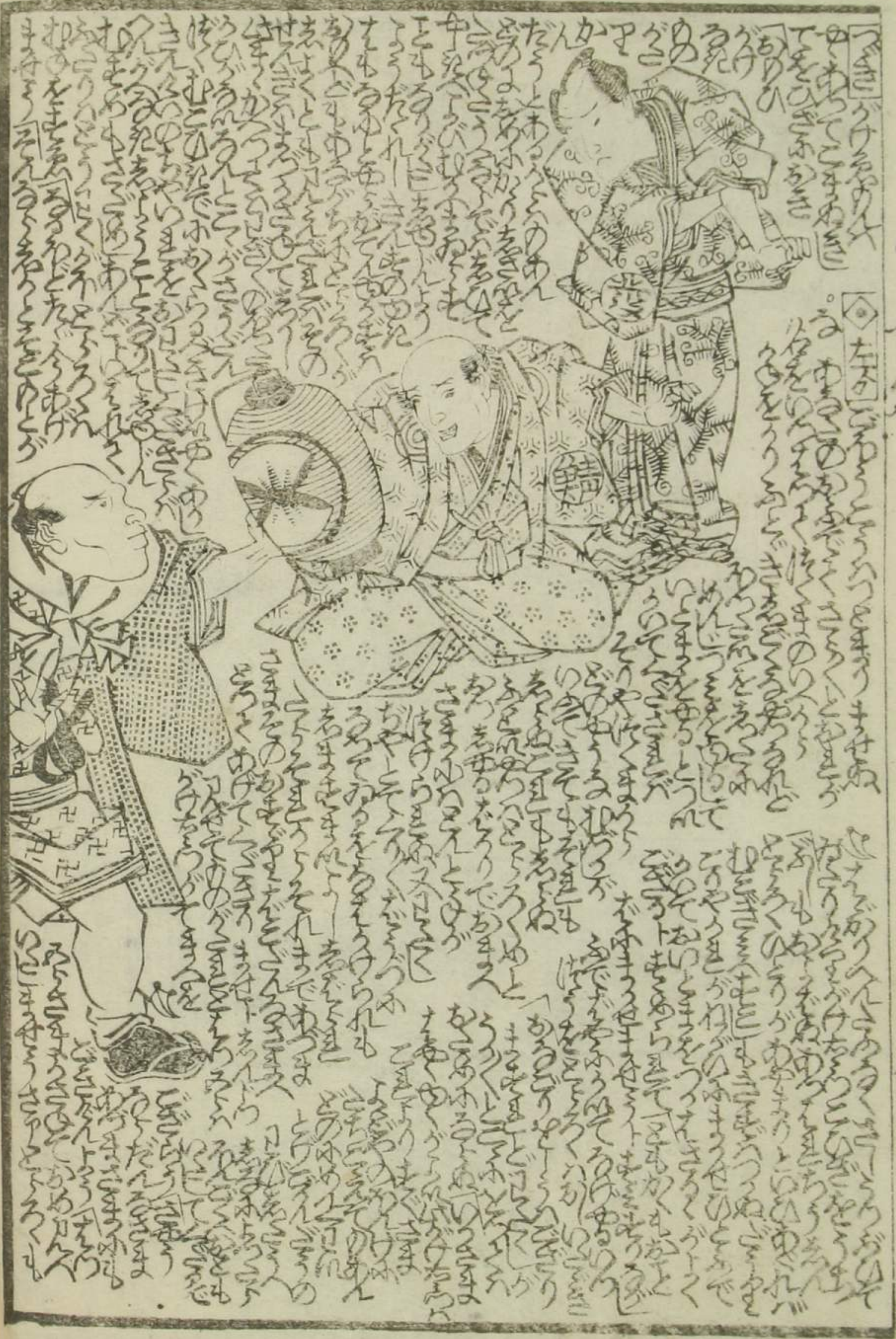
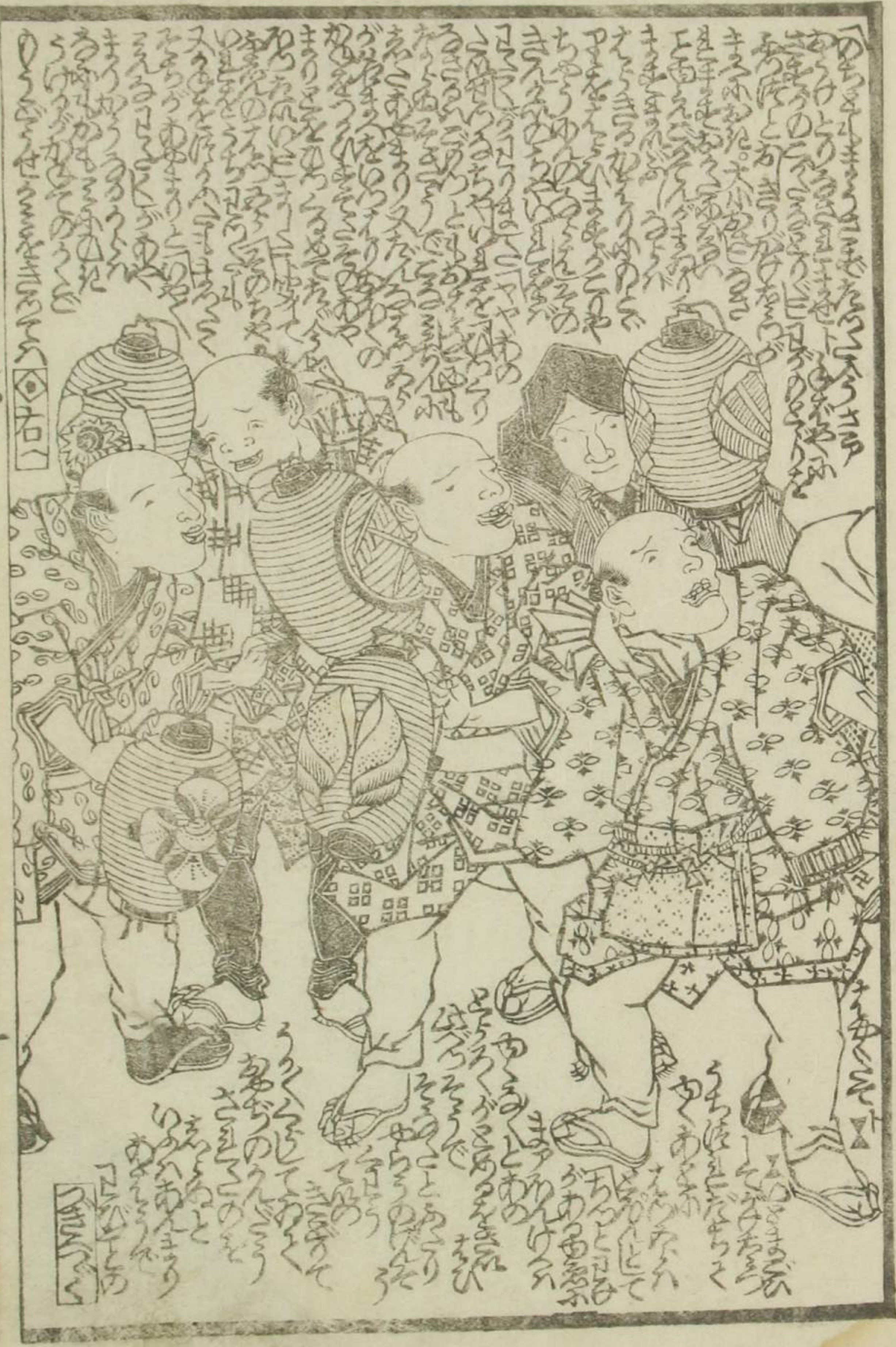














Vertical columns of handwritten Japanese text, likely a diary or narrative, surrounding the illustration. The text is written in a cursive style and covers most of the page area.



Vertical columns of handwritten Japanese text, likely a diary or narrative, surrounding the illustration. The text is written in a cursive style and covers most of the page area.







Handwritten text in vertical columns, likely a narrative or commentary, surrounding the illustration on the left page.



Handwritten text in vertical columns, likely a narrative or commentary, surrounding the illustration on the right page.





御免

日光御宮御參詣供奉御役人附袋入全冊

新日本名所之繪

唐紙摺一枚蕙齋鋏形紹真筆

新女古狀揃園生竹

大本兩品出来高并蘭山編撰

早操 自在 日光道中記

一枚摺 半冊 日光御宮御參詣供奉御役人附袋入全冊

隨筆 玄同放言

初編二編共二冊 第三編三冊近刻

通油町 勘屋喜右衛門梓行

國貞画種彦作



留川 彫工 道仲 研 筆

Vertical columns of handwritten text in cursive style, likely a dedication or commentary related to the illustration.

