

## Historic, archived document

Do not assume content reflects current scientific knowledge, policies, or practices.



# TOWNSEND'S

20th Century  
Catalog

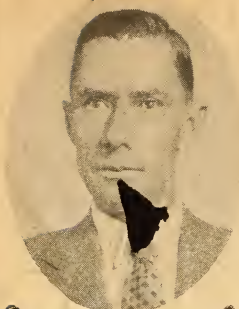
*Approved*  
STRAWBERRIES  
BERRY PLANTS  
*and*  
FRUIT TREES  
1935



DORSETT  
*Approved*

E. W. TOWNSEND & SONS  
Salisbury, Maryland

a friendly word  
to our folks



E. W. TOWNSEND  
PRESIDENT

E. W. TOWNSEND, Jr., Sales Mgr

L. S. TOWNSEND, Asst. Mgr

E. W. TOWNSEND, Sr., Mgr  
ESTABLISHED IN 1900

**E. W. Townsend Sons Nurseries**  
**QUALITY STRAWBERRY PLANTS**

RASPBERRIES, BLACKBERRIES, GRAPES  
DEWBERRIES, ASPARAGUS  
Prompt Service - Quick Deliveries  
SALISBURY, MD. Nov the 22nd 34

1000 Acres In Plant  
Kerns, Growing All  
The New and Better  
Varieties Small Fruits



Dear Friends.

Gladly and freely I offer my heartfelt thanks to our 1934 customer friends, whose cooperation and appreciation of our efforts to serve them to the best of our ability resulted in a gratifying increase in our volume of business during the past year.

My 1935 slogan, "Make every customer a personal friend", is the best recipe I know for continued success. So you may be sure that the 1935 policy of this nursery will continue unchanged--to keep our friends and make many new ones, by giving them the best service, the finest grade plants available, and maintaining the lowest prices possible, so that they will be assured of a good profit on the bumper crops our plants will produce.

This year, more than ever before, we are aware that it is necessary for us to make many sacrifices and forego many possibilities for legitimate profits in order to maintain, very closely, the low 1934 prices. Yet we are going to do this, feeling that the loyalty you have shown in the past, and the many new customer friends this policy will make for us this year justifies our stand on this important point.

The wise man forgets today's market prices and plans carefully to take advantage of tomorrow's rising market. Those who provide for bumper crops for 1935 and 1936 will be well repaid for the investment they make today. Strawberry prices will go up and the man who plans for it will reap a fine reward.

As in the past, every new variety we offer will be up to the Townsend "Approved" standard and worthy of your earnest consideration. All of our varieties are up-to-date. We offer nothing which has not been tried and tested in a most exacting manner to prove its quality and profit-making possibilities. Order from this catalogue with the fullest confidence that, whatever selection you make, it will be good. The accompanying reports from leading growers in widely separated sections are well worth reading.

We are prepared to serve you better than ever before, to furnish you with the finest plants money can buy, and to do everything in our power toward making 1935 and '36 successful years for you as a strawberry grower

Sincerely,  
*E. W. Townsend*  
President



L. S. TOWNSEND JR.  
MANAGER



L. S. TOWNSEND  
MANAGER-PACKING DEPT.

© CIA A 165637

JAN 24 1935

# Townsend's TRUE BLUE PLANTS

are the American  
Standard of Quality

*Beware of  
Substitutions*

This Trade Mark is  
your protection  
for True-to-Name  
Quality Plants

**B**ECAUSE for years past the Townsend name has represented all that is best in strawberry growing, and has become the byword for quality plants the country over, many attempts have been made by unscrupulous rural salesmen to pawn off inferior plants on the unsuspecting buyer at lower prices than our list, and represented as being products of the Townsend nurseries.

To protect our customers against such fakirs, we have adopted the new policy of carefully marking every bundle of plants shipped out from our nurseries by placing our trademark on the label. This is your insurance against crooks who, by such



unfair means, are trying to capitalize on the Townsend name.

We do not wish to be misquoted in our statement; as there are many fine salesmen throughout the country who are selling plants grown by reputable concerns, with not the slightest idea of misrepresenting in any way the goods offered by them. This class of salesmen generally do not resort to such tactics in selling their customers. **Every agent offering our plants for sale throughout the country will have proper credentials that he is our authorized agent.**

**No plants received by you are sent from this nursery without Townsend trade-marked label.**



## The TOWNSEND FOUR-POINT GUARANTEE *and What it Means to You*

### QUALITY

The good name of this firm and good will of its customers have been built and preserved by **always** handling nothing but the highest grade stocks available. Every plant we ship is the best we can produce.

### TRUTH

Old customers know that they will always get the variety they order. They have faith in us and we will not break it.

### HEALTH

Every plant we ship is healthy, thrifty, and free from all injurious diseases. Diseased plants will produce dividends for neither you nor us.

### PRODUCTIVENESS

Every plant that goes into our propagation fields is selected for its **heavy fruiting crowns**. In this manner we keep our stock bred up in **productiveness** and vitality. They are carefully packed so that when they reach you they will grow strongly and produce as you have the right to expect from **Townsend's** plants.

We Replace Free Any Stock Received by You That Does Not Meet These High Standards.

# PLANT SELECTION

## —Its importance to Commercial Growers

Plant selection does not differ from the breeding of horses; cows and other animals in the matter of keeping up the "Strain" and improving it. Townsends have always taken pride in the "Strain" of plants offered their customers. Our thirty-four years of experience in the growing and propagation of small fruit plants has given us valuable information that could have been obtained only through constant contact with our propagating fields throughout the years we have grown plants. Every Townsend's plant is an offspring of a selected plant that has special merits back of it. We go into our fields each year with experienced men under personal supervision of one of the Townsends and personally select plants that are to be used for mother plants. Plants are chosen that show outstanding vigor and productiveness, and to the greatest degree exhibit the true characteristics of the variety. These selected breeding plants are then reset into a plot of fertile soil where they are grown until the following spring. During this period of growth numerous strong healthy runner plants are produced. These plants are then taken up during the spring at proper planting time and set in large acreages on our farms where they are grown for our many customers throughout the country.

We do not stop here, but go on year after year selecting this stock and keeping our strain up to the nearest to perfection that thirty-four years in small fruit plant breeding has taught us. Our many customers benefit by the selected strain in larger yields and better quality fruit.

### WHAT IT MEANS TO HAVE A PLANT OF STRONG CROWN DEVELOPMENT

Recent research has shown that 80% of the fruit stems on strawberry plants are formed in the crown of the plant from September to November of the season before blossoms appear. It is, therefore, important to set nothing but well developed plants for your fruiting beds; plants that will have sufficient vigor to send out strong crowned runner plants in which these fruit buds are formed. This governs the yield of berries you will get the following spring after setting.



We use the same methods in selection of parentage in the development of our plant stocks that are used by cattle and horse breeding experts. This means many dollars to the buyer of plants at picking time.

With Townsend's selected strain of plants you are assured of a well developed fruiting bed that will yield far above the average plants offered, when grown under normal conditions. Many thousands of our customers know this to be true and write us convincing letters about their heavy yields obtained from our plants.

### 2,500 QUARTS OR 10,000 QUARTS TO THE ACRE—WHICH YIELD DO YOU PREFER?

The fact is that the average yield of strawberries, taking the country over, is less than 2500 quarts per acre (according to government figures). This low yield will barely pay cost of growing strawberries, while a yield of 5,000 to 14,000 quarts per acre will usually net from \$500 to \$1400. This is a very good profit even at the lower figure, and much more than is being made on the average truck crop. Many of Townsend's customers report yields of 10,000 to 14,000 quarts per acre and seldom report less than 5,000. This is convincing proof that the Townsend's strain of plants have much higher average yields per acre than just ordinary plants.

### MONEY-MAKING OPPORTUNITIES GROWING STRAWBERRIES

There are big profits in growing strawberries. The first step is to secure healthy vigorous plants with yielding qualities bred into them. Plants that will produce uniform berries of the highest quality; berries that will bring the top price on any market. The local and distant markets are usually well supplied with small undersize berries during harvest season bringing the price down on this class of berries to an unprofitable basis while the same markets are glad to get berries of superior quality and perfectly willing to pay a premium price for them. Our customers often write us that their berries have been topping the market from three to five cents per quart; this extra price being a very good profit and one that no grower of strawberries can afford to pass up.

### LET US HELP YOU GET STARTED

Our instructions are easily followed; simple enough for the average 10 year old boy to understand. To those of our friends with little or no experience in this profitable strawberry field we are most happy to take up your problems and give you the benefit of the information that we have gained through the years we have been in the small fruit plant business. We also issue a complete culture guide on small fruit growing. This booklet is free for the asking.

### SATISFIED CUSTOMERS

Thousands of our customers have grown up with us. They started in a small way just as we did. Following our advice and instructions they have made more money year after year in growing strawberries and other small fruit plants than any other crop. These thousands of old customers have sent to us tens of thousands of new customers. In this way TOWNSEND'S NURSERIES have grown until today we are the largest growers and shippers of Strawberry Plants in the country. We enjoy the full confidence of the Strawberry growers throughout the country. We are mighty proud of our business and just as proud of our long list of faithful customers who have contributed their share in building our business to its present standing. For this faithfulness we are giving to each of them the best that is within our power in trying each year to grow plants that will please them better and to give the best service at our command.

# HOWARD SUPREME

Deep Feeder, Strong Grower  
Good Plant Maker - Does well  
on heavy land where other  
varieties fail

Every quality that enters into the ideal strawberry is included in the new Howard Supreme. It rates so far ahead of every other new introduction that there can be no doubt that it will soon surpass all other varieties in quantity sold, because it will be the biggest profit-making berry the grower can buy for a long while to come.

**A UNIVERSAL STRAWBERRY.** It has proven a complete success in every part of the country in which it has been introduced, surpassing all other varieties in every respect.

**STRONG GROWER.** It is a strong vigorous grower in all soils and all climates, being immensely productive in heavy soils where many other varieties grow sickly and die.

**A TOPPER IN PRODUCTIVENESS.** It has produced in our own fields 12,000 quarts per acre, while the Premier, planted in alternate rows beside it, produced 8,500 quarts per acre.

## HOWARD SUPREME

Patented  
July 25th,  
1933,  
Plant  
Patent  
No. 71.

Reproduction  
of plants of  
this variety  
for sale is  
forbidden.

A  
"GOLD MINE"  
for  
Strawberry Growers



**LARGE.** The fruit is large to extra large in size.

**GOOD FOR SHIPPING.** The fruit is very firm, as well as large, thus making it an excellent variety to withstand the rigors of shipping.

**QUALITY.** If there be any highest point in this berry, it is in quality, which is of the best.

**LONG SEASON.** Beginning just after the Premier, its fruiting season ends shortly after the Premier has finished.

Simply remember that **Howard Supreme**, being an imperfect bloomer, and a heavy producer, should be well pollenized by planting with equal rows (two rows of each) of such varieties as Premier, Aberdeen, Jupiter, Fruitland, or some other extra good perfect flowering sorts of its season.

**Plant as many Howard Supreme as you can buy. You simply can't go wrong with this wonderful, dividend-producing berry.**

Read what the leading strawberry experts say of this marvelous introduction and you will be convinced that it is the best all-around berry that money can buy.

FINDS HOWARD SUPREME, JUPITER  
AND TOWN KING EVEN BETTER  
THAN EXPECTED

Montana  
February 1st, 1933.

E. W. Townsend & Sons,  
Salisbury, Md.  
Gentlemen:

Last spring a year ago, I purchased from you Howard Supreme, Jupiter and Town King, and have found these even better than I had expected. I see one of your competitors is knocking these very three varieties, but I am not discouraged in the least. I have now three and a half acres as fine a patch as you ever looked at, and I am expecting another of the finest crops of berries ever grown. I am going to keep on growing these until you tell me that you have something better. I can always trust Townsend to do the right thing by his customers. I am wishing you the best of luck.

Your old customer,  
H. DETTMORE.

## Official Test Connecticut Agricultural Station

The checked results on the following varieties of Strawberries were obtained by the Connecticut Agricultural Experiment Station on the Station's Farms at Mount Carmel, Conn., Spring 1932, from plants set Spring 1931; a total of 26 varieties were tested at that time.

**HOWARD SUPREME GAVE THE LARGEST YIELD**—Holds its size remarkably well to the last picking when properly pollinated, and is certainly well worth trying in this territory. Standing as to yield, Howard Supreme first, followed by Bellmar, Premier, Aberdeen, Town King, Blakemore, Fruitland, Wil-Son, Lupton and Chesapeake.

**VARIETIES RECOMMENDED FOR YIELD ..**  
HOWARD SUPREME                      HOWARD'S PREMIER  
BELLMAR                                      ABERDEEN  
**VARIETIES RECOMMENDED FOR EARLY PICKING**  
BELLMAR                      PREMIER                      BLAKEMORE  
**VARIETIES RECOMMENDED FOR LATE PICKING**  
CHESAPEAKE                      PURCELL  
WIL-SON                                      STEVENS

### DATE OF PICKINGS

	First	Largest	Last	Yield in Quarts Per Acre
Aberdeen	June 10	June 21	July 1	11,979
Bellmar	June 8	June 19	July 27	13,058
Blakemore	June 8	June 19	July 27	7,623
Chesapeake	June 13	June 23	July 7	5,080
Fruitland	June 10	June 21	July 27	6,806
Howard's 17 (Premier)	June 8	June 23	July 1	12,524
Howard Supreme	June 10	June 21	July 1	15,110
Jupiter	June 13	June 23	July 27	7,759
Lupton	June 17	June 22	July 1	5,173
Purcell	June 17	June 27	July 7	9,529
Steven	June 13	June 27	July 7	8,031
Town King	June 13	June 21	July 7	6,398
Wil-Son	June 17	July 7	July 7	8,440

# PREMIER

(HOWARD 17)

Plant the Premier  
for Sure Early Profits

Fifteen years' experience has taught us that there can be no better early strawberry than the Premier. It was a hit in 1919 and continues to be the start of the early bearers in 1935.

It's an "all-around" berry, unexcelled for the home garden, local market, or for shipping moderate distances.

Its large, luscious, beautiful berries are all that their appearance promises and more. The plants are immensely productive, being surpassed in that respect only by the new sensational Howard Supreme, a later bearer. It is a sturdy grower, producing an abundance of healthy plants, each of which is equally productive. Best of all, the late frosts do not bother the Premier, even though it is an early fruiting

variety, failures from that source being almost unknown. The foliage is extremely disease-resistant.

Of all the Premier plants sold, Townsend's, because of their extra quality, are the most prolific producers. We are proud of the 15-year record created by the millions of Premier plants propagated and sold by this nursery.

Cuyahoga County, Ohio,  
October 16, 1934.

E. W. Townsend & Sons,  
Salisbury, Md.

### SURPLUS PLANTS

My 12,000 Surplus strawberry plants purchased from you last year have given a wonderful fruit yield—there were so many fine and good varieties that throughout the season I was able to supply my roadside fruit stand with a selection of berries that sold readily.

Your surplus plants surely made money this year.

C. D. DANIEL.



*A Field of*  
**TOWNSEND'S PREMIER**  
*is an*  
**Absolute Guarantee**  
*of*  
**sure future profits for you**

## Here's Real Value IN SURPLUS STRAWBERRY PLANTS

During our day's digging we run over on some varieties we have dug to fill orders, and as we do not ship anything but fresh-dug stock, carrying no plants over from one day to the next, we use these plants to fill Surplus Plant orders. Customers who are not particular about varieties will find these plants a real bargain, as every plant is strictly fresh-dug, labeled, and true to name. Please do not ask for any particular variety when ordering these plants. At the price we are offering them, it would be impossible to comply with this request.

1000 plants .....\$2.75 per 1000  
5000 or more .....\$2.50 per 1000

See Price List Page 38 for Complete Surplus Prices

E. W. Townsend & Sons  
Salisbury, Md.  
Gentlemen:

43 Hurstbourne Rd.  
Irondequoit, N. Y.,  
Rochester P. O.  
April 3, 1934.

We received shipment of surplus strawberry plants today which arrived in excellent condition, and really they are the finest and healthiest assortment of plants I have ever seen, Very truly yours, ELMER M. CONWAY.



## BLAKEMORE

Blakemore is unquestionably one of the best commercial varieties introduced by the U. S. Dept. of Agriculture for many years because it is ideal for shipping long distances. Where time is pressing, and help limited, it will keep on the vines 2 or 3 days longer than most of the older varieties, and can be picked in perfect condition.

With its high jelly-like content, pleasing flavor and acidity, it is most desirable for preserving and table use.

The fruit ripens very early, bears large crops and maintains its size when the plants have been kept well thinned.

**Note, the Western and Southwestern States.** Where the Aroma is planted extensively, the Blakemore is an ideal companion variety for earlier fruiting and will in many ways equal the Aroma and provide an earlier market for the growers in those sections.

The Ideal  
Commercial  
Berry

Removes All  
Shipping  
Worries

## Townsend's Select MISSIONARY

The fact that, during the past 22 years, the Townsend nurseries have shipped over 100,000,000 Missionary plants into the State of Florida alone is proof in itself that, for a main southern crop the Missionary is unexcelled. Because of our method of "up-breeding" (continually improving on this old variety), the Townsend standard for this variety has been continually raised so that today southern planters acknowledge that our strain is the most productive and the surest to produce consistently large profits of any Missionary plants sold. They do not gamble, but stick to us and are well repaid for their confidence in our product.

**Buy Townsend's Selected Missionary plants for southern planting!**

The Best of  
the Southern  
Varieties

## BELLMAR

Another good  
Southern variety

Among the many recent introductions of the U. S. Dept. of Agriculture, the Bellmar ranks high because of its handsome appearance and heavy crop-producing possibilities in southern territory. As an early berry it is recommended as a commercially profitable item to be planted in all states to which the Premier is adapted.

McDonald Co., Mo.,  
April 20, 1934.

E. W. Townsend &  
Sons.

Blakemore.

Gentlemen:

Received shipment  
of 60,000 Blakemore,  
and have them all set  
out—growing fine.

We find your strain  
of Blakemore free  
from disease and pro-  
duces an exceptional  
fine crop of uniform  
berries.

Townsend's strain  
in our experience has  
proven far superior to  
the average Blakemore  
plants offered.

A. B. BROWNELL.

McCracken Co., Ky.  
July 15, 1934.

Gentlemen:

I have fruited the  
Bellmar this past sea-  
son and find this varie-  
ty to be well suited  
for this section of the  
country.

The fruit shows ex-  
tra fine texture, ships  
well and averages ap-  
proximately 6,000  
quarts to the acre.

It should be classed  
as an early superior  
Aroma with a much  
heavier yield. I like  
it.

B. WILLIAMSON.

Norfolk Co., Va.,  
April 16, 1934.

Dear Sirs:

One of the largest  
strawberry growers of  
this section has recom-  
mended your strain of  
Blakemore plants to  
me, as he has grown  
them for the past two  
years with unusually  
heavy yield.

I would like to have  
a quotation immedi-  
ately on one hundred  
thousand of the Town-  
sends strain of Blake-  
more.

Please advise if you  
can ship at once.

R. NOTTINGHAM.

Note—Order receiv-  
ed April 19 100M de-  
livered direct to his  
truck April 20th.





# Fairfax

Originated by  
U. S. DEPARTMENT  
of AGRICULTURE

Introduced to  
Commercial  
Growers in  
1933

*A berry  
that retains  
its flavor  
in cold, wet  
weather*

*The new  
Early Variety*

- \* Rare fine flavor.
- \* Extra large and firm.
- \* Tests average—
  - 90 per cent fancy.
  - 10 per cent fair to poor.
- \* Our tests last year averaged  
5400 quarts per acre.

*fit for a King*

# Tried *and* Proven

## FAIRFAX—a Leader Among recent introductions of the U. S. Dept. of Agriculture

Because of its outstanding productiveness, marvelously rich flavor and large size, it is causing a sensation wherever planted. The large bushy plants have tall stout stems and the fruiting season extends over a long period, holding up well to the last picking. The berries are conical in shape, bright red color, darkening when overripe.

The Fairfax is coming into general favor with Commercial Growers because of its somewhat tougher skin and unusual shipping qualities. **Our own experience with the Fairfax the past few years** on the general acceptance of Commercial growers who have purchased plants from us carries our approval on Fairfax, as a really worth while variety that will make "profit" for our "Market Growers".

Lancaster County, Pa.  
July 12th, 1934.

Dear Mr. Townsend:

The Fairfax plants we have tested for you have given every promise of being a berry the Commercial Growers will demand in the very near future. While the berry is of dark color, it is large in size and has excellent shipping qualities, and is an excellent berry for the growers to handle.

V. LUTZ.

Tioga County, New York  
April 21st, 1934.

E. W. Townsend & Sons,  
Salisbury, Md.

Dear Sirs:

Just a line to tell you how delighted I am with the New Fairfax plants. They look like winners.

Thanks for prompt shipment.

GEORGE G. HAVENS.

## Big Rooted Plants

The root system contains the life of a strawberry plant; Townsend's quality plants are grown on fertile, sandy loam soils, from which the plants can be easily dug with roots intact and undisturbed. This is one of the reasons why Townsend's plants are known the country over as the standard of quality.

Townsend's method of digging and packing preserves the roots, so that they reach destination in fresh and crisp condition—ready to take hold quickly in a new location. Our special method of "plant selection" assures vigor, health and productiveness. This method of propagation costs us more—but what a whale of a difference in fruit yield it makes to the grower.



# ABERDEEN

medium early

A Big Money maker for the Market gardener. One of the most productive varieties, being excelled only by Howard Supreme in this respect. Fruit averages large throughout the season, color a bright shiny red, berries mostly a top shape, has a beautiful double green calyx that adds materially to its beauty. In plant growth it stands among the very best, and will make a fine matted row on any ordinary soil. There is not a blemish of rust or disease that shows at any time. Aberdeen has been fruited for several years by many of the large growers in Pennsylvania, New Jersey, Ohio and other northern states, and has proved a money maker. We cannot recommend it for the Southern states as the texture is too soft for long distance hauls, but anyone within a few hundred miles of market can afford to plant Aberdeen. Some of the leading Horticulturists in Pennsylvania rank Aberdeen ahead of all other varieties, giving the Premier second place. We have planted a very large acreage for plants and we are in a position to take care of your orders at a most reasonable price.

### ABERDEEN HIS LEADING VARIETY

Dear Sir: Carlisle, Pa., Feb. 16  
Aberdeen was my leading variety this past year. I sold all my berries at 25c a quart. It is not only a heavy yielder, but has the size and good eating quality. I find that strawberries are one of the best paying crops I can grow, and want to plant more when I can buy some more land.

HARRY C. CRAMER.

### ABERDEEN HEAVY FRUITER IN NEW HAMPSHIRE

Dear Sir: Contoock, N. H., April 29th.  
The Aberdeen plants you sent me and which fruited last year were the heaviest yielders I have ever grown; I never saw berries piled up so on the vines; I have more to fruit this year.

H. B. EATON.

Recommended  
for

New Jersey  
Pennsylvania  
Ohio and  
Other  
Northern  
States



Aberdeen.

# Three Winners

## for WESTERN and MID-WESTERN States

Because of their peculiar adaptability to the growing and shipping conditions of the western and mid-western states, we highly recommend the Beaver, Red Gold and Senator Dunlap (or Dr. Burrill) as worthy of the consideration of 1935 buyers of Townsend strawberry plants. The descriptions below will assist you materially in making your selection.



Beaver.

### Beaver

An offspring of the Dr. Burrill and the Premier. Customer reports indicate that the Beaver is, in many ways, superior to the Premier. The fruit is medium large, of fine quality and of extra firm texture, making it an ideal variety for long distance shipping. The fruit retains its firmness on the vines after ripening so that it may be left there several days before picking, if necessary.

### Red Gold

An extra large variety, introduced and highly recommended by the Gardner Nursery Co., of Iowa. An early variety, it is fairly productive and of fine quality. If you have not already tried this variety out in your territory, it will pay you to do so.

### Senator Dunlap

Fruit good size, beautiful bright red, glossy and firm. Splendid keeper and shipper, of excellent quality. Truly the "Poor Man's Berry", as it will grow without fertilizer on any soil.

## Standard Varieties

### Worthy of Your Attention

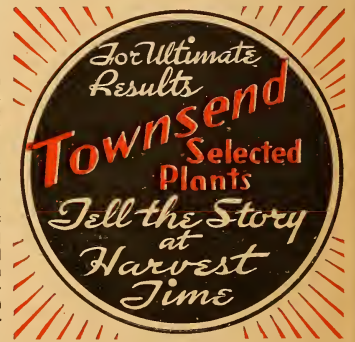
Among the ever-increasing number of strawberry varieties, certain of the older ones continue to merit a high place in the strawberry world, because their qualities have withstood the test of time and because they continue to be good producers in the territories where they are now used as a commercial and home-garden berry. The following list is meritorious and worthy of your closest study.

**Success** is grown extensively in New Jersey. **Marshall** has long been a leader in the North. **Dr. Burrill** is still planted extensively throughout the middle west. Other varieties listed are all highly productive.

**DR. BURRILL.** Closely resembles the Senator Dunlap variety. Plant growth is very strong; making plenty of fruiting beds on light sandy soils where other varieties will not grow. The fruit is of a dark color; highly flavored, with plenty of juice. That makes them a good canning or table berry. We do recommend it for long distance shipping berry.

**CAMPBELLS.** Extra early. Extra productive, of extra fine quality berries, that average medium in size. Color a rich dark red, very firm, dessert quality, very good when fully ripe, as it has a rich spicy flavor. Has been on the market a long time, and still popular where an extra early market berry is wanted.

**FRUITLAND.** Extra early. Strong, hardy grower, fruit large to extra large, resembling Big Joe, exceedingly productive of bright red, firm, good quality berries. Fruitland is a general favorite with growers here on the Peninsula, and has given best satisfaction wherever sent.



Red Gold.

**COOPER.** Medium early. A fairly good grower, seems to have its greatest popularity in the Michigan section. Fruit large, irregular in shape, moderately firm, very productive. Lots better varieties.

**KLONDYKE.** Early. A strong hardy grower, especially adapted for the southern states. Fruit medium in size, moderately productive of round, firm, good quality berries. Not recommended for the North.

**RED HEART.** Medium early variety, has been found uniformly productive in the western states. It has also been recommended for trial by the Department of Agriculture in the northern states from New England to Maryland, and Wisconsin to Missouri. Flesh is bright rich red, agreeable acid flavor, and ranks high in dessert quality, also makes a very vigorous plant growth. Its canning qualities are of the highest type.

**SOUTHLAND.** Extra early. The Southland is named for its apparent adaptability to the southern states, especially as a local market berry. Under favorable growing conditions at Willard, North Carolina, it has produced the fewest cull berries of any sort yet tested there. The berries are large, bright red, with a glossy surface. Flavor sweet, and are of the very highest dessert quality. The berries, while firm, are not so firm as the Blakemore or Bellmar.

**SUCCESS.** Extra early. A good strong grower of good quality for home use. Medium to large in size, very productive, a general favorite. Grown extensively in New Jersey market gardens.

OPEN  
the  
DOOR  
to  
Bigger  
Profits

With  
**BIG JUPITER**  
and **BIG JOE!**

### Both Medium Early

Whenever you find that Townsend's own the patent for a new strawberry introduction, you may be sure it will be a worthy member of your strawberry patch or farm.



Jupiter.

## JUPITER

Patented November 29,  
1932—plant patent No.  
46. Perfect. An exclusive  
product of the Townsend  
Nurseries.

**Jupiter** (patented 1932) is a blood-brother of the Premier and the Gandy, combining many of the best qualities of each, though ripening later than most varieties, along with Big Joe.

**Appearance.** Much like the Gandy, a glistening red, large size, firm meat. Just a good solid berry.

**Productiveness.** Equalled by very few varieties, sure to become one of the most profitable items of your strawberry family.

**Culture.** Is at its best on low, springy soil, and will outstrip the Gandy on average soil. To assure best results, beds should be thinned to prevent formation of too many plants.

## BIG JOE

For over a score of years Big Joe has been the leading medium early to late Strawberry in the eastern half of the country and has produced record-breaking crops wherever grown.

For size and productiveness it has ranked with the top-notchers and continues to do so up to the present day.

Its sparkling color and firm texture make it one of the most marketable of all berries, a winner for commercial purposes.

**Culture.** Likes a mellow, springy soil.

If it is not  
already a  
member of  
your straw-  
berry family  
make it one  
this year

Trenton, N. J.  
For several years we have been growing your strain of Big Joe Strawberries. Our trade at the roadside market thinks there is nothing like them. They are not only attractive in size and color, but have a fine flavor that all like, and we get the top of the berry market for them.  
J. KETTLE.

Hagerstown, Maryland.

Gentlemen:—

I have been purchasing your Big Joe Plants for several years, as I think it one of the best midseason to late varieties. Our crop this year was extremely nice, picking over 7000 quarts, which we sold on the Washington Market for as high as 30c a quart, netting us a good profit on the acre that we picked from.  
WM. SLEIGHT.



Big Joe.

# Beauty

## One of the Best Midseason Berries

This variety is extremely marketable because of its fine appearance, and will stand shipping to moderately distant points.

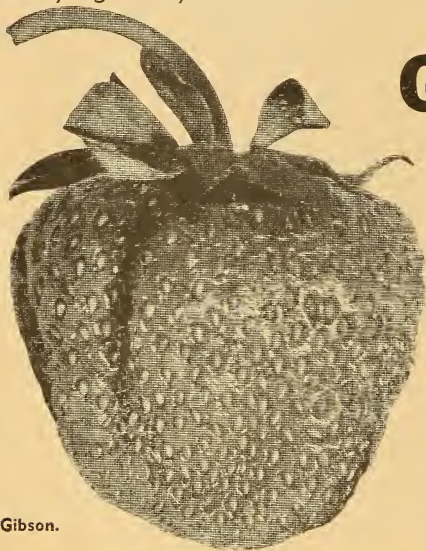
The fruit is almost perfect in shape and an attractive light, glossy red in color—moderately firm in texture.

On an average soil, Beauty is a strong, robust grower, with strong foliage and a long, fibrous root system.

It will pay you to try this variety, which is about on a par with Big Joe. It has made a consistently good showing in our trial plots for several years. Try some in your test plot and judge for yourself whether it is a good variety for a main crop plant in your territory.



Give Beauty a trial in your garden this year, or include some in your test plot.



Gibson.

## Gibson An Ideal Canning and Cold Pack Variety

This is an extremely productive variety, though of too soft a texture to carry well or to ship. It is well adapted and easy to grow for the market-garden and roadside stand. It will appeal to the public and sell readily.

Read what  
Mr. Terry  
says:

Terrycille, N. Y.

Among the plants I purchased of you this year were some of the MAY QUEEN which grew better than any of the others, both as to sturdiness of plant growth, production of plants and freshness of foliage throughout the season. The season was the driest I have ever known, yet your plants grew better than any I have seen around here.

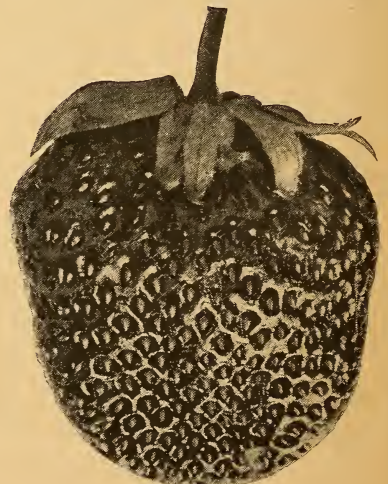
P. E. TERRY.

## May Queen

—A worthy companion  
for the TOWN KING

This variety makes a good fruiting row on large, stalky plants that hold the fruit well off the ground. The fruit is large to extra large, firm, and of the very highest quality. Bright rich red in color.

We have only a few thousand of this variety left.



May Queen.



The BIG  
Commercial  
Strawberry

*Approved*

for the  
NORTHERN  
STATES

An excellent  
late berry

WE SELL  
MILLIONS  
ANNUALLY

# Chesapeake

— Why it dominates the late varieties

Just one of the many testimonials acclaiming the merits of Chesapeake Strawberries.

Niagara County,  
New York.

Dear Sirs:

Have been handling strawberries for the past 50 years—and no man can raise better plants than the 30,000 Chesapeake you shipped me. Please accept my thanks for the fine plants and good treatment received from you. My friends will give you some nice orders next year, as they all admired my plants.

I remain yours,  
R. H. YOUNG.

**Townsend's The HEADQUARTERS FOR  
CHESAPEAKE**

Our plantings this year of Chesapeake cover the largest acreage we have ever grown.

**Strong Fibrous Roots—Perfect Specimens**

I never saw finer and healthier plants, every row seems perfect. The long fibrous root system, and the sturdiness of the plants, are sure to take hold quickly in new locations.

**Chesapeake Demand Heavier Each Year**

Each year we find the larger commercial growers are steadily increasing their plantings of Chesapeake, due to the profitable returns they have made previously. While our stock of Chesapeake is one of the largest in the country, the heavy demand on our stock is such that we advise our friends to place their orders as early as possible—it's your assurance of 1935 plantings.

- A—Sure cropper.
- B—Bright rich red color.
- C—Doesn't discolor after picking and retains color for several days.
- D—Average size, 20 to 30 berries to a quart.
- E—Exceptionally late.
- F—Doesn't come into bearing until all the early varieties are practically through and extends season about 2 weeks.
- G—Distinctly a quality berry.

# AN IMPORTANT MESSAGE for the Commercial Grower



**S**INCE the beginning of our career as nurserymen the Townsend nursery has been intensely interested not only in producing and handling the best strains and varieties of strawberry plants available, but also in offering to farmers and growers in different sections of the country those varieties which would be best adapted to that particular section and which demonstrated the best money-making possibilities for the local grower.

With that end in view, we have not only conducted extensive testing and proving grounds at the nursery, but have tried our best to keep an accurate account record of the adaptabilities of the different varieties as reported to us by our customers and various state experimental stations. This record has proven invaluable to us and to our customers in the

various territories who wished to be sure, before buying, that the varieties they selected were particularly adapted to local conditions.

The varieties mentioned in this catalog, and recommended for the various territories, are the result of this painstaking research on the part of ourselves and our old customers. Further definite information is available at this office and we will be glad to furnish it to you upon request.

Many varieties offered by us for particular localities will do equally well in other localities, but close adherence to the data in this catalog and to such data as we will furnish upon request will distinctly minimize the possibility for error in selecting new varieties for your main crop plantings.

We are proud of this service, know you will appreciate it, and trust that you will make use of it whenever necessary.

## Territorial Adaptability of Townsend's Varieties

Variety	Approved for	Season
Deaver	Western and Mid-Western states	Extra Early
Blakemore	Western and Southern states	Extra Early
Southland	Southern states	Extra Early
Success	New Jersey	Extra Early
Fairfax	Eastern states including Ind., Ohio, Mich., Ill., and West Va.	Early
Dorsett	All Strawberry sections except far South	Early
Klondyke	Southern states	Early
Premier	All sections except extreme South	Early
Bellmar	Southern states	Early
Townsend Missionary	Florida and Gulf states	Early
Howard's Supreme	All Strawberry sections	Early
Red Gold	Western and Mid-Western states	Early
Aberdeen	N. J., Pa., Ohio, and other Northern states	Med. Early
Senator Dunlap	Western and Mid-Western states	Med. Early
Dr. Burrill	Middle West	Med. Early
Cooper	Michigan and vicinity	Med. Early
Red Heart	Northern states from New England to Maine and Wisconsin and Missouri	Med. Early
Big Joe	All Strawberry sections except extreme South	Med. Early
Jupiter	All Strawberry sections except extreme South	Med. Early
Ford	All sections except far South	Late
May Queen	All Strawberry sections	Late
Lupton	New Jersey, Ohio, Pennsylvania, New York, Connecticut	Late
Chesapeake	Northern states including West Virginia, Ohio, Illinois, Indiana, Michigan	Late
Wm. Belt	N. Y. and Pa., and other states north of Mason-Dixon line	Late
Willson	Connecticut, Massachusetts, New York, Pennsylvania	Late
World's Wonder	Me., Vt., N. H., northern N. Y.	Late
Brandywine	California and Florida	Late
Town King	All Strawberry sections	Late
Townsend's Big Late	All sections	Late
Aroma	Tenn., Miss., Ky., S. Carolina, Ind., Ill., Eastern Kansas, Arkansas, Michigan and Missouri	Late
Gandy	All Strawberry sections except extreme South	Extra Late
Mastodon Everbearing	All Strawberry sections	Early Summer till frost



# Two BLUE-BLOODS of the Strawberry World

The Townsend selective and restrictive method of improving strawberry qualities has scored another signal success in producing "Blue-Blood" strains of the Aroma and Gandy varieties which offer the grower quality and productiveness far in advance of any others to be purchased in the United States.



The dollar you invest in Townsend Aromas and Gandys will work harder and produce greater dividends than any other investment you may make in extra-late varieties.

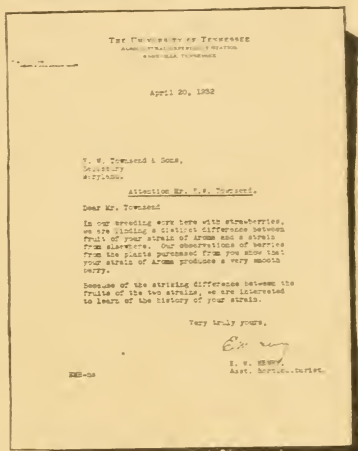
## AROMA

Large associations in the western and south-western states have discovered by test that the Townsend strain of the Aroma strawberry is far superior in quality and production to locally developed strains. As a result they have been purchasing our plants in ever-increasing quantities for the past 20 years.

**Appearance.** Large—a brilliant sparkling red.

**Productiveness.** A yield of 10,000 quarts per acre is common when Townsend's Selected Strain Aroma plants are used.

**Commercial Possibilities.** Excellent for shipping because of firmness of fruit. Fine results are obtained with Aroma in Tennessee, Missouri, Kentucky, South Carolina, Indiana, Illinois, eastern Kansas and Arkansas.



Aroma.

## GANDY a very late variety

By selective methods, we have built up the original old strain Gandy-Prize until it is today twice as productive as when it was introduced years ago. We have tested out a good many extra late varieties, but have failed to find any later than the Gandy; and none with the quality that this extra late variety has. We have discarded such varieties as Orem, Mascot, New York, and several others as we consider the Gandy the cream of them all. It is now the King of extra late varieties, excellent for home use and a sure dividend-producer for the market gardener. Whenever we find a better late berry we will be found listing it, but until we do we shall list only Gandy.

**Culture**—A rich black loam is the ideal spot for Gandy although it will give excellent results on any type of springy soil.



Gandy.

**NOW** *Everyone can Enjoy*



They grow in corners of the garden, along the property line, or in small or large garden plots

Little is required to raise luscious fruit from Townsend's "Plant Selected" Strawberries. They will reward you with an abundance of fresh fruit during the whole bearing season.

Sure I enjoy life—Here's why.



Rochester, Indiana.

I am planning to make this a real strawberry year in our garden, as they are one of the most enjoyable, healthful and profitable crops grown compared in units of space required. It is a pleasure to go into the garden and pick big, red, luscious berries for a meal, or for jams, jellies and preserves to be enjoyed during the cold winter months.

MRS. EMMA WILSON.

Send for Free Culture Guide.

**ALL SEASON GARDEN**

Will furnish the average family with rich red delicious berries from early in season to late fall.

- 25 Premier
- 25 Howard Supreme
- 25 Big Joe
- 25 Mastodon

100 Plants

Only

Cat. Value \$1.75

**\$1.00**

**A GARDEN OF BIG BERRIES**

This garden will yield extra large berries from early to late, and plenty of them.

- 100 Aberdeen
- 100 Premier
- 100 Big Joe
- 100 Chesapeake

400 Plants

Only

Cat. Value \$3.15

**\$2.00**

**SPARE TIME GARDEN**

With a little attention any one can realize a nice profit from this garden.

- 200 Premier
- 200 Howard Supreme
- 200 Dorsett
- 200 Town King
- 200 Gandy

1000 Plants

Only

Cat. Value \$6.60

**\$4.85**



Plenty of Berries for Canning.

# Home grown Strawberries!

## Have a Strawberry Patch —It's Fun

We have received so many encouraging reports from our friends who have ordered these strawberry gardens in the past, and of the wonderful results they are obtaining that we are again offering this year a group of six collections that will give wonderful results, in almost every part of the country.

Remember every plant shipped from the famous Townsend Nurseries is fully guaranteed to be strictly first class, free from all injurious diseases and carefully packed to reach you in good growing condition. Otherwise our policy has always been to replace free of charge.



Fresh Berries—Direct from Vines.

Grow  
your  
own  
berries!

for  
Pies  
Canning  
Cakes  
Jams  
Cereals  
Dessert

Culture Guide  
Sent Free  
for the Asking

### A FAVORITE GARDEN COLLECTION

These varieties are noted for their heavy yields of quality berries.

100 Howard Supreme  
100 Fairfax  
100 Jupiter  
100 Town King  
100 Mastodon (Fall bearing)  
500 Plants

Only

Cat. Value  
\$5.90

**\$3.95**

### TOWNSEND'S OWN CHOICE GARDEN

No matter what state you live in we will select varieties that will please you.

100 Best Extra Early  
100 Best Early  
100 Best Midseason  
100 Best Late  
100 Best Very Late  
500 Plants

Only

Cat. Value  
\$4.80

**\$2.65**

Fox Chase, Phila., Pa.  
E. W. Townsend Sons  
Salisbury, Md.

Sirs:  
The plants purchased from you are doing fine and I am especially proud of their growth during the dry season. I did not get them until rather late, but they have grown very good.  
C. STEWART SCOTT.

Wayne County, N. Y.,  
Oct. 1, 1934.  
E. W. Townsend & Sons,  
Salisbury, Md.

Sirs: For the past 5 years I have not been without one of your strawberry collections. Besides always having a plentiful supply for the family, I canned 67 quarts and sold over \$30.00 worth to my friends living around here.

MRS. GENE ARNOLD.



No garden is complete without a few strawberry plants.

### SPECIAL TEST GARDEN

Four of the greatest yielding early fruiting varieties ever introduced.

250 Howard Supreme  
250 Dorsett  
250 Aberdeen  
250 Premier

1000 Plants

Only

Cat. Value  
\$8.50

**\$5.00**

# WILLIAM BELT *A New York and Pennsylvania*

*Favorite*

In New York and Pennsylvania, the Wm. Belt, though an old favorite, still ranks as one of the biggest money-makers for market gardeners. Its appeal and salability continue and our sales of this variety increase every year.

**WE HAVE  
ONLY  
380,000  
TO SELL**

Place your orders for this variety early.

This variety is not a "fad". It is here to stay. Its good size, fine flavor, and all-around good appearance are recognized by both growers and consumers. The fancy trade demands the Wm. Belt and will continue to do so for many years to come.

It thrives in ordinary garden soil and produces good crops of fruit. Not adaptable to low, springy soil, because, under those conditions, it is subject to rust.

## WIL-SON

This late fruiting offspring of the William Belt is especially adaptable for planting in **Connecticut, Massachusetts and New York.**

Because this variety seems to thrive in almost any soil it is ideal for the home garden as well as for the market-gardener. **Only 50,000 plants are available. Order early.**

The fruit is extra large, rich red to the center, very firm and sweet, with the spicy William Belt flavor.

In our trial plot, it equalled everything in quality and stood very near the top in production.

**WORLD'S WONDER.** Here is a real cold-climate variety, adaptable particularly to culture in **Maine, Vermont, New Hampshire and Northern New York.** The largest berry grown, of good quality, moderately firm and very productive. Fine for home use and for sale at nearby markets where size is a distinct asset.

**BRANDYWINE.** Subject to rust at fruiting time, producing large dark red fruit in large quantities, this variety is still a favorite in **California and Florida** as a late-bearing variety.

**WASHINGTON.** Fair in flavor, though lacking the honey-sweet taste of better varieties, this is a very firm berry, only moderately productive. **We recommend Chesapeake or Town King** in its place.

**SAMPLE.** Large fruited, moderately firm, of bright red color and very productive. This variety is fast losing its popularity and is being outshone by the many newer and more marketable types.



William Belt Strawberries.

*Basil, Ohio  
March 17, 1934*

*E. W. Townsend & Sons  
Gentlemen:*

*We have been using your plants for several years and find them the best we ever used in our 25 years experience. Inclosed order for 9,000 Premier.*

*Respectfully,*

**HOWARD W. DUMOND.**

# Plant FORD

No Rust  
Blemish!

A Townsend Introduction  
that has stood the  
Test of Years

Ford, like Premier, is frost resistant, and has made hundreds of our customers big money when other late varieties were killed. A strong, hardy plant, good grower on all soils. Fruit very large, firm and of good quality; ranks with the very best in production. Ford will make too many plants if not restricted, and for this reason should be set wide in the rows and grown in narrow matted rows or in hills. We have never seen a rust blemish on any Ford plant in ten years growing it, and never heard of a crop failure. Plant Ford and you will not go astray.

Ford. A late variety that produces when other crops fail. We recommend it.

## BIG LATE

Excellent for Dessert Quality

A Townsend introduction. Known as the aristocrat for the dessert quality. Has proven a great money maker as it is a hardy grower on most ordinary soil. A heavy producer of medium to large bright glossy red berries, that are held from the ground by the large stalky plants. No garden is complete without Townsend's Big Late.

E. W. Townsend & Sons  
Salisbury, Md.  
Gentlemen:

Perry County, Ohio  
August, 1934

I purchased last spring one of your Strawberry collections. It is surprising the abundance of wonderfully fine berries I have picked. Your assorted varieties are just the thing to provide berries throughout the whole summer season. It's money well invested.

JOHN J. TOMLINSON.



A Bearing Field of Ford, as Above Picture, is Like Having Money in the Bank.



Lupton.

## LUPTON

The Favorite in New Jersey

(Late). Originated in New Jersey, and widely grown in that state where it seems to be at its best. Large fancy berry and an excellent shipper. Moderately productive. On account of its large size and beautiful color always commands top prices. Will do well on soil where Chesapeake fails. Dessert quality fair. Its beauty sells it.

TOWNSEND'S  
PLANTS HOLD THEIR  
OWN BELOW ZERO

Bridgewater, Maine  
June 26th, 1934

E. W. Townsend & Sons  
Gentlemen:

The berries that we set out a year ago in 1933 are doing fine. The HOWARD SUPREME and the PREMIER I think are the berries to raise here.

It was below zero here this winter. They wintered fine.

H. E. PRYOR.

TOWNSEND'S  
TRIO GROUP

50 PLANTS \$1.25  
each Variety  
150 Plants

100 PLANTS \$2.20  
each Variety  
(300 plants)



*A Big Bearer  
in Drought  
Regions*

**TWO**  
*Strawberry*  
**DORSETT**  
**(EARLY)**  
*The future yardstick by which*

**Marketable  
Everywhere**

*Make a place for  
DORSETT Strawberries  
in your 1935 Planting  
Program*

**Productiveness.** Compare the 1933 and '34 trial plot production of the Dorsett and Premier and judge for yourself.

	1933	1934
Dorsett . . . .	11830 quarts	12213 quarts
Premier . . . .	10562 quarts	11238 quarts

This table shows total production, but does not show the average superiority of every berry produced by Dorsett plants over the Premier. The **total** Dorsett crop produces almost no small fruit.

This berry gives us more food for genuine enthusiasm than any variety we can remember, and we do not hesitate to recommend it as being the biggest source of profit the strawberry grower can hope to obtain at the present writing. Read the following description and judge for yourself whether you can **AFFORD** to neglect planting this variety.

**Color.** Medium light. Lightness retained even after it ripens.

**Size.** Fully as large as Chesapeake.

**Firmness.** Much firmer than the Premier and thus ideal for long-distance shipping as well as for local markets.

**Vigor.** In this respect, the Dorsett stands supreme. Vigorous in growth, free from disease, and maintains healthy foliage throughout the fruiting season.

**Quality.** Even in an over-supplied market, the large, fine Dorsetts have consistently brought **TWICE** the price of many other standard varieties, showing that the American buyer is still able to pay higher prices for real universal quality.

**Frost Resistance.** Little, if any, loss has been reported from late frosts.



**Where Your Dorsett Plants Will be Dug From This Year. Vigorous, Healthy Plants Await Your Order.**

An Exclusive  
Creation of  
Townsend's

**NEW**  
*Aristocrats*  
**TOWN KING**  
(LATE)  
*all Strawberries will be measured*

Superior even to  
the Chesapeake

This is a worthy brother-aristocrat of the Dorsett, having no faults and often bringing fifty cents to a dollar a crate MORE on the open market than the Chesapeake. It is the most perfect of all late strawberries.

For several years, in test plots, it has outyielded two to one the Chesapeake, Gandy, Sample, Lupton, and Wm. Belt in color, shape, size, beauty, and firmness.

Its soft, mild flavor has found general favor wherever it has been marketed.

Town King needs only average soil to produce healthy growth and a good fruiting bed of plants.

The Townsend nursery is proud to be the exclusive copyrighters of this berry which gives continued promise of being the most universally planted of all the late-fruited varieties.

**READ WHAT THESE MEN SAY ABOUT TOWN KING**

MR. J. K. BARNHART, New Carlisle, Ohio. "Town King has done exceptionally fine for me. Never saw such fine berries and the best sellers on the market."

At the Pittsville, Maryland, auction block the past season, Town King never failed to top the market, often bringing fifty cents to a dollar per crate over the famous Chesapeake, which is at home in that section.

Lancaster, Pa.

I have been growing Town King the past seven years, and consider it the best of the eight varieties grown on our farms. It is attractive in color, large in size, and our customers will pay from five to ten cents more a quart than for other varieties offered on our roadside market.

A. VOCKMAN BROS.

Gentlemen:

Buchanan County, Mo.

I fruited several varieties of strawberries the past spring, and Town King outranked all of them by far. All were planted on the same ground. It sure is an ideal berry. It has the size, color and productiveness, and looks just as fresh on the market, as when first picked from the vines. It brought as high as a dollar per crate more than Premier, and they were large as hen eggs. You may think I am exaggerating, but I have seen people take a knife and eat them like an apple. I expect to set seven to eight acres next spring, and ninety per cent will be Town King.

HENRY DITTMORE.

MR. CLYDE DAVIS, Pittsville, Maryland. "Town King best strawberry I have ever grown or seen grown. Surpasses such varieties as Chesapeake, Lupton, Big Joe, both in quality and production."



Town King.

Gentlemen:

Greensburg, Penna.

We have been growing your Town King and our customers are so tickled with them that we have discarded all other late varieties. The berries are simply beautiful, far surpassing the other late kinds on our soil.

MR. & MRS. A. K. McCLINTOCK.

New York State.

Gentlemen:

Please send catalog listing Town King. I have seen this berry growing here, and without doubt it is the finest late berry I have ever seen. My neighbor picked better than 7000 quarts per acre, outyielding the well known Chesapeake.

WM. BRANT.

E. W. Townsend & Sons.

Gentlemen: Enclosed find order for more plants. I ordered Town King plants from you in 1932. These were the finest plants that I have ever set.

HARRY S. GRAFF, OHIO.

At the Experimental farm of Wm. Kehr, Perkasie, Penna., Town King led Chesapeake in yield, beginning at the same time and fruiting several days later.

Fleetwood, Penna.

January 11th, 1933.

Lupton good plant maker, large size, shy yielder, poor quality. Town King good plant maker, large size, good yielder, good quality and good shipper. Two distinct varieties.

ROBERT G. YORGEY.

Oneida County, N. Y.

Gentlemen:

One row of Town King picked us many berries as two rows Lupton, and no comparison in size or quality. I have been growing Town King now for several years.

J. W. BEAN.

# Three Townsend Everbearing STRAWBERRIES



We have done the waiting, the watching and the caring for these plants, you get the benefit NOW—BERRIES NEXT SPRING, SUMMER, AND FALL. Once planted will continue to yield large luscious strawberries year after year.

These strong vigorous plants developed in the famous Strawberry Belt of Wicomico County—are weather seasoned and ready to yield a full crop in **ten weeks after planting.**

We grow 50 acres of Fall-bearing Strawberries for market. Throughout the season truck loads of these marketable delicacies leave daily for New York, Washington, Baltimore and other places. Its worth a visit to the TOWNSEND NURSERIES, never in your life will you enjoy such a sight of activity.

You too, as well as thousands of our friends and customers can build up a sizeable income by GROWING STRAWBERRIES.

Our special "Hill system of Planting" is your assurance of BIGGER CROPS. Read about it on page 24.

The Three Big Leaders are  
**MASTODON — LUCKYSTRIK — ALDRICH**

Take your pick—they are all favorites

Any one of these three everbearing varieties will produce berries ten weeks after setting and plenty of them until snow flies. Hundreds of our customers catering to the roadside market find them profitable in prolonging the strawberry season. As they come into fruiting the first year, set after the June fruiting varieties are through bearing. They attract attention and a premium price is paid for them. We are making more money growing Everbearing Strawberries than we have ever made before, and certainly you can make money on them. Thousands and thousands of folks would eat these berries every day and pay a good price if they could get them. So folks, there is plenty of room for any one of you to get in on this deal. It will be a mighty long time before enough Everbearing Strawberries are grown in the fall months to supply the demand. If you have never grown any of these strawberries just try one of our garden collections listed on this page and see for yourself just how easily they are to grow and sell at a profit. Townsend's Everbearing Strawberries are Sure Profit Makers and you will be pleased with results. Write us for free folder on Everbearing Strawberries. Tells how to get bigger berries and more of them from your Everbearing plants. It's free.

Complete Prices Townsend Everbearing Plants, page 38.

**TOWNSEND'S**  
*Big Cropping*

**Fall Bearing Gardens**

**SMALL BACK YARD  
FALL BEARING GARDEN**

50 Mastodon  
50 Luckystrik  
**\$1.15**  
100 plants

**LARGE BACK YARD  
FALL BEARING GARDEN**

Will furnish plenty of delicious berries for a large family.  
100 Mastodon  
100 Luckystrik  
**\$1.95**  
200 plants

**BIG PROFIT MAKING  
FALL BEARING GARDEN**

500 Mastodon  
250 Luckystrik  
250 Aldrich  
**ONLY \$7.00**  
1000 plants  
\$10.00 VALUE



# "True Blue" MASTODON Plants

Most Prolific of the  
Everbearing Varieties  
Bears the Largest Fruit

Millions  
Sold Annually

## MASTODON

Is one of the largest fall-bearing Strawberries.

Attractive in size and color with a nice large green cap, bringing top prices on the fall market. It is also noted for producing an abundance of fruit again during the early summer harvest along with other June fruiting varieties. This variety should be grown by all who are interested in Everbearing Strawberries. Growers who purchased our Mastodon plants in small lots of a few hundred, years ago, are now purchasing in lots of several thousand. Some customers who have their roadside markets grow several acres each year to reset a new bed. We have a fine crop of Mastodon plants this year, but possibly not enough to go around, and we advise our customers to get their orders in early if they want to be sure of getting our True Blue Mastodon Plants.

Every farm,  
village and  
suburban  
home should  
plan to set  
out this  
"True Blue"  
Mastodon.



## ALDRICH Approved for New England

The New Everbearing from New England. Our attention was called by the originator of this variety, Mr. M. L. Aldrich, Putnam, Conn., in the fall of 1930. We went over to look at it in fruit, and found it as the originator had stated, simply loaded with delicious fruit. Aldrich is a berry of large size, bright rich red color, and a heavy producer—the plants being clean, healthy and vigorous while fruiting. We certainly recommend giving Aldrich a fair trial, as we believe that it will prove to be a successful berry for the Northern States. Our supply of plants of this variety is limited. Would advise placing your order as early as possible.

## LUCKYSTRIK

Approved for  
Northern States

Has always been our favorite Everbearing Strawberry. There are none that can touch it in quality. For this reason, one of our customers names it the Aristocrat of the Everbearing family. Fruit is bright red, firmer than any other fall bearing variety, with a quality all its own. Produces heavily early in July from plants set in the spring. Takes a couple weeks' rest and then continues producing heavy crops until November. It is also one of the best spring crop varieties, bringing top prices. We recommend Luckystrik Everbearing for its quality of fruit, size, and beauty, as well as productiveness.

It's a real  
pleasure to  
pick these  
"Big  
Fellows"  
They're  
so sweet  
and  
appetizing



Mastodon.

# Cultural Directions for Strawberries

**PLANT SELECTION.** Perhaps the most important task of all is the correct selection of varieties for the particular territory in which they are to be planted. A careful study of the variety recommendations in this catalog, and personal communication with the Townsend Nurseries will eliminate the possibility of the buyer purchasing varieties which have not the greatest profit-making possibilities in his territory.

**SOIL PREPARATION.** In the first place, be sure that the land is reasonably fertile and as nearly as possible free of weeds and grass. Plow the land to be used carefully in the fall (this is much preferable to spring plowing) and spread a liberal coat of barnyard manure over the plot during the winter or early spring. Potato fields, tomato or cow-pea plots, or any site where the land has been enriched by growing truck crops makes an ideal plot for the strawberry patch.

If manure is not available, broadcast a heavy application of commercial fertilizer over the plot just before the plants are set in the spring. (Two or three weeks in advance is just about right). Sheep manure or a mixture of 1500 pounds of tankage and 500 lbs. of acid phosphate is good, distributed at the rate of 1000 lbs. per acre. Raw bone meal will not injure the plant roots and is the only fertilizer recommended for use directly under the plants.

The soil should be worked up into as good condition as possible before setting the plants. If the ground is manured, drag the soil level, marking the rows with a light marker, setting the plants on the side of the mark, using the same side of the mark on each row for equal width.

**SETTING THE PLANTS.** For large plantings, a horse drawn transplanter is good to use if a good operator is available. For small plots, or in stumpy new land, the garden trowel is best to use. On stony soils use a spade. Set the plant roots straight down without crowding and pack the earth firmly around them.

**CARE OF PLANTS ON ARRIVAL.** Townsend's plants come to you properly cleaned and bunched ready to set.

If the roots are too long to set in a stony soil, clip off a portion of them cleanly.

If the plants are received before the soil is ready, open the boxes and take the plants out, dampen the roots up to the string, redampen the moss and repack in the same box, place in a cool cellar and the plants, if still dormant, will keep from 7 to 10 days without injury. Healing in is permissible, if done by an experienced man but it is slow and tedious and the tops and crowns may get wet. The first method is best.

**PLANTING DISTANCE FOR MATTED ROW SYSTEM.** Generally, the matted row system is considered the best and most practical. Plant rows  $3\frac{1}{2}$  to  $4\frac{1}{2}$  feet apart, depending on varieties used. A matted row should be 3 feet wide when the plants are laid by, and sufficient room should be left for the pickers. Keep the space between the rows cultivated as long as the runner plants form. Plants should be set 15 to 24 inches apart. Good, rank growing varieties like the Premier, Aberdeen, Blakemore, Dunlap, Howard Supreme and Jupiter should be set 24 inches apart in the row, with rows 4 feet apart.

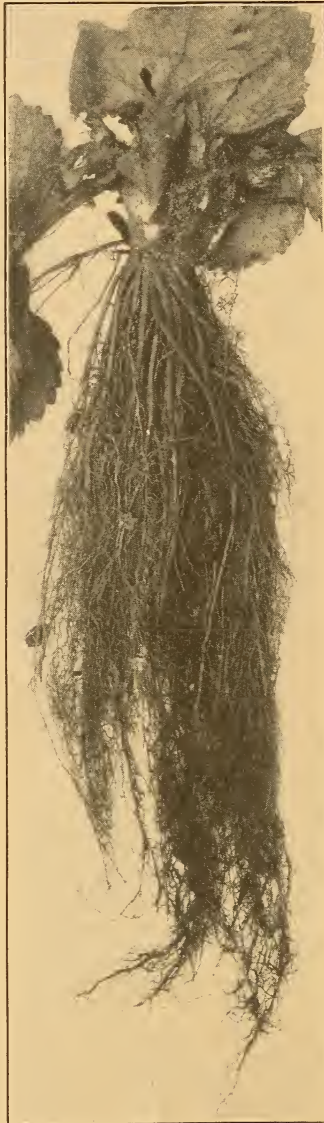
**EVERBEARING IN HILL SYSTEM.** The hill system is the only way to grow everbearing strawberries successfully. Keep the runner plants cut off, not allowing more than five or six well-spaced runner plants to form. This produces large, vig-

orous plants, each plant often yielding a quart of berries during the summer and fall. Space these rows 30 inches apart to allow for horse cultivation. The two rows in the bed are spaced 12 inches apart, and the plants set 18 inches apart down the rows. With this spacing, 16,000 plants will set an acre. Such spacing allows room to work with a hoe around the plants at all times. Plant food can easily be applied as the cultivation continues through the summer months. Feeding the plants while they are fruiting is easily done without injury by broadcasting fertilizer or chicken manure around the plants. Cultivation is easy, as such spacing affords sufficient room around the plants to keep down all grass and properly mulch by shallow working with the hoe during dry weather.

**CULTIVATING.** Tillage in newly set strawberry fields should be thorough in the early part of the season, in order to preserve moisture so that plants can become established thoroughly in the soil and later in the season to conserve moisture so that the plants can develop runners. Weeds and grass should be kept out of the fields at all times, as they will take the moisture needed by the strawberry plants. Most successful growers use the cultivator as often as once each week throughout the first growing season, and during periods of drought even more frequently. Hoeing should be done as often as it is found necessary to clean out all weeds and grass. Cultivating should be shallow near the plants, both because of the danger of loosening them in the soil and because if too deep the roots near the surface will be broken. The teeth on each side of the cultivator should be shortened, so they will not stir the soil near the row to a depth of more than 1 or 2 inches, as many kinds of weeds continue to grow in late autumn and start to grow in early spring. We advise working the plants until hard frosts occur. The field will then be free from weeds, and in the following year very few will have time to grow before the harvest season.

**MATING VARIETIES.** If you order all perfect flowering varieties, plant them in large plots just as they come. But, if you order part imperfect flowering you should plant every third or fourth row to some perfect flowering sort of the same season (and there are some mighty fine imperfect sorts that should not be overlooked). We offer four imperfect flowering varieties in our list, May Queen, Howard Supreme, Townsend's Big Late and Sample.

Varieties that are not marked in our price list like Premier, or Big Joe, need no other varieties planted with them as they are Perfect flowering varieties. Also all the everbearing varieties listed are perfect flowering, and can be planted alone.



Vigorous Plants the First Essential.

## NUMBER PLANTS REQUIRED TO SET AN ACRE

	Number Plants	Plant Spacing
Strawberries, Field Culture	8000	$3\frac{1}{2} \times 1\frac{1}{2}$
Strawberries, Garden Culture	.....	$2\frac{1}{2} \times 1\frac{1}{2}$
Everbearing Strawberries, Field	8000	$3\frac{1}{2} \times 1\frac{1}{2}$
Everbearing Strawberries, Garden	.....	$1\frac{1}{2} \times 1$
Everbearing, Double Row Hill System	16000	$2\frac{1}{2} \times 1\frac{1}{2} \times 12$
Blackberries	1700	8x3
Red Raspberries, Hedge Row	2400	6x3
Red Raspberries, Hill System	1800	5x5
Black Raspberries	1700	$7 \times 3\frac{1}{2}$
Dewberries, Solid Rows	2400	6x3
Grapes	490	9x10
Asparagus	3200	7x2

Complete Culture Guide on Small Fruits Will Be Sent Free to Anyone Requesting This Booklet.

# It's becoming a National Habit

**BECAUSE**—Year by year, small fruits, strawberries in particular, **TOWNSEND strawberries above all**, are returning large profits for any one willing to devote an acre of ground, more or less, to their cultivation. The market for this fruit grows as each improved variety appears, and Townsend originates many and handles ALL the best varieties.

By careful selection of plants, by constantly building old varieties to new peaks of productiveness, and originating new patented varieties of our own, we are keeping up with the trend of the modern market for small fruits—keeping just a little ahead of it. Producers, the country over, are beginning to show their recognition of the value of our research work by buying Townsend suggested varieties and by insisting on purchasing Townsend-grown plants.

We appreciate this attitude on the part of our growing list of customers and will continue in our efforts to help them in every way possible to produce maximum profits consistently from land devoted to strawberry culture.

**Market gardeners and proprietors of roadside stands have not realized the possibilities of producing strawberries of exceptional size and quality for local and nearby marketing.**

Despite the growing general demand for this fruit, local buyers are not yet being offered the finest and largest strawberries the local producer can grow, because he himself has not yet canvassed the possibilities of the field.

If, by careful selection of variety, with an eye for larger size and good quality, the local truck gardener will buy the best of the plants which we recommend, he will soon find that local retail



**Townsend Selected Variety.**

**The buyer will pay more for improved quality.**



**Ordinary Commercial Berries.**

buyers will be willing and delighted to pay 50 to 100 per cent more for these selected varieties when offered to them, thus jumping his profit by at least 100 per cent.

We could quote any number of occasions where this has proven to be true, and simply offer this suggestion in the hope that such local growers as receive this catalog will appreciate and take advantage of this growing **QUALITY MARKET** by ordering one or more of the new, fine Townsend varieties which we are now able to offer.



**Farmers, Truck Gardeners, and Growers are fast learning that money spent in purchasing**

**Townsend Approved Plants is a PAYING INVESTMENT**

## ROADSIDE STAND OFFER

We select the correct varieties for your location that will give results.

This collection requires about one-fifth of an acre, and should yield at least 1800 quarts Strawberries; 400 pints Red Raspberries.

An excellent opportunity to offer fancy varieties at increased prices to your trade.

When you buy from Townsend you get nothing but the best that grows.

- 250 Best Extra Early Strawberry plants
- 250 Best Early Strawberry plants
- 250 Best Midseason Strawberry plants
- 250 Best Late Strawberry plants
- 250 Best Very Late Strawberry plants
- 50 New Chief Red Raspberry plants
- 50 Latham Red Raspberry plants

**ALL FOR ONLY \$6.95**

# CHIEF *the Earliest Raspberry of them all*



## Ready for Market when Prices are Highest

Selected 10 years ago from the planting of 4000 Latham Seedlings, the Minnesota State Breeding Farm has given to the berry growers of America the famous Latham's only rival, "Chief."

**Chief** has turned out to be by far the finest early Red for general planting.

The fruit is not quite as large as Latham, but is bright red, very firm and an unusually heavy yielder. (Two-year plantings have produced nearly 200 crates per acre; three-year plantings 294 crates per acre).

The Chief is practically immune from mosaic and mildew and is much hardier. Because of the unusual abundance of tough leathery foliage, and the strong fibrous roots developed on the Townsend Nurseries, Chief is not so subject to drought as other varieties.

With the excellent keeping and shipping qualities of the "Chief" . . . the brilliancy of color and appetite appeal, coupled with its fine flavor and heavy yielding qualities and the added profit of 75c to \$1.00 per crate over all others makes Chief an outstanding money maker in the raspberry field.

**AMBITIOUS MARKET GARDENERS AND HOME OWNERS SHOULD PLANT DURING 1935 SUFFICIENT "CHIEF" TO TAKE CARE OF THE EARLY SUMMER MARKETS—IT PAYS!**



### Don't overlook this big value **RED RASPBERRY OFFER**

25 NEW CHIEF. 1 year size.

25 LATHAM. 1 year size.

50 Select Plants **\$1.45**  
Special Price

50 SELECT LATHAM.

50 SELECT CHIEF.

100 Plants **\$2.15**  
Special Price

### What Other Prominent Men Say About the New Chief

#### "CHIEF" OUTYIELDS OTHER REDS IN OHIO

**J. S. Shoemaker, Associate Horticulturist, Ohio Agricultural Experiment Station, says, "Chief" is a heavy cropper. The plants bore quite a few berries the year they were set and this year outyielded all other red raspberry varieties in our variety test plantation."**

**Ray Speer, Former President Minnesota State Horticultural Society, says, "Chief" is certain to achieve as wide a reputation as its parent, Latham. Since Latham fruits later than "Chief," the latter really is a supplement to Latham, and in no sense a competitor of it. In comparison with King, which fruits the same time as "Chief," the fruits of "Chief" are slightly larger, somewhat earlier, of better quality, and of more uniform shape. It is a firmer berry, ships very well, and is less crumbly than King. Experts everywhere predict a wonderful future for "Chief."**

### New Lower Prices:

1000  
**CHIEF** Plants  
only **\$16.00** ▲

See Page 39 for Complete Prices.

# The Largest Size and Heaviest Yielding Raspberry

# Latham

## Facts Worth Knowing

Read the report of Mr. W. H. Barrow, fruit specialist, in the Connecticut Agricultural Review.

In comparative tests the leading varieties of Raspberries were planted, under identical conditions, all receiving the same care and attention.

**OUR LATHAM ARE THE REDPATH STRAIN**  
Officially, LATHAM, and REDPATH are considered one and the same variety. Notwithstanding this conclusion many well informed practical fruit growers are still of the opinion that the REDPATH is a superior strain of the LATHAM. Our LATHAM are the REDPATH STRAIN, hence customers are doubly assured of getting dependable stock when they order our LATHAM.

### HERE ARE THE RESULTS:

LATHAM, pints per acre... 10860  
HERBERT, pints per acre... 7296  
CUTHBERT, pints per acre... 7200

The Latham yielded 3564 more pints per acre or more than \$534.60 more than any other variety.

Thousands of commercial fruit growers are planting every year large quantities of Lathams. They have come to realize that this heavy yielding sort requires little or no more attention for either planting, pruning, cultivation or general care than those varieties that are less productive, and the ultimate return in **dollars and cents**, is the margin of profit required to operate a healthy and profitable fruit business.

LATHAM is not as early as the renowned "Chief" nevertheless its qualifications as a large and salable red berry, its adaptability to almost any part of the country, especially the severe winters of the northern states and its immunity to disease ("mosaic," etc.) have placed it the foremost of the real profitable berries to grow.

Not a berry bush leaves our nurseries unless they are inspected several times each year by the State Nursery Inspector.

This is your assurance for strong and healthy plants as Townsend's give 100 per cent satisfaction.

Contrary to the common policy of digging small plants from the middle of the rows and leaving the best canes for fruiting, as practiced by some growers **OUR POLICY IS TO DIG THE ENTIRE FIELD THUS GIVING YOU THE BEST, STRONGEST AND MOST VIGOROUS PLANTS.**

**SOILS.** Our soil and climate are especially adaptable for growing strong fibers and well rooted plants, which is necessary to promote strong fruiting canes.

## New lower prices on Latham plants

**1000 Select LATHAM plants only \$15.00**

### TWO SATISFIED CUSTOMERS

*Villa Ridge, Illinois.*

Gentlemen:  
My one-year patch of Latham planted in checks six by six produced 72 twenty-four pint crates per five hundred hills. My average price per crate through the entire season was \$6.00. These plants were mosaic free when I received them and passed state inspection for two years. This is \$432.00 from 500 plants the first season.



E. O. SCHOEMBS.

### 5300 Quarts Latham Raspberries Off An Acre 1 Year After Setting

Gentlemen: *Martinsburg, W. Va.*  
This year has been an exceptionally fine year for us with the Latham Raspberries purchased from you, with an average of 3300 quarts to the acre. The berries were of fine quality and appearance. It has been a real pleasure in growing this field of raspberries, as the stock you sent us was well graded with strong root systems.

N. SMAILES.



You Can Always be Sure of Better Lathams when You Send Your Order to E. W. Townsend & Sons.



## Everbearing RED RASPBERRIES

### *The Quickest and Longest Crop Producers of the Raspberry Family*

Raspberries that bear their first crop **WITHIN 80 DAYS AFTER PLANTING** should be planted by every commercial producer and in every home garden for immediate results and for their high fruit-producing qualities.

Where the grower can get this ideal combination of high-class berries, quick results on his initial investment, and marketable fruit throughout the season, the everbearing varieties are indispensable.

The home garden particularly is not complete without such of these varieties as will provide the home with fresh fruit the first season and from early until late during succeeding season's growth.

**Culture:**—Any well drained soil is suitable for Everbearing Red Raspberries. Sandy loam or light clay soil is best. In Central and Southern States, plant rows six feet apart, each way. In Northern states plant rows five feet apart each way. Set two plants at each hill one to two inches apart. Detailed information on raspberry culture will be sent our customers on request.

## DEWBERRIES

**YOUNGBERRY VARIETY.** This dwarf trailing form of the blackberry is highly prized by growers wherever it is known because of the enormous size of the fruit, the great productivity of the plants and the high prices the crops command on the open market.

The large size, sweet flavor and soft texture of the fruit create a demand for it wherever it has been introduced.

Every dollar which you invest in this plant will return big dividends. A yield of 8,000 quarts per acre is not unusual for the Youngberry.

**KATHERINE.** Until the production of this variety, the St. Regis was considered the greatest raspberry ever produced. We feel that, in many ways, the Katherine is its superior. The fruit is exceptionally large, of firm quality, and its flavor unsurpassed. It is worthy of a place in every raspberry patch. This variety is a prolific producer from early spring until late fall.

**ST. REGIS.** This is still a great raspberry. For four weeks after the first berry production, the yield of fruit is heavy and the canes continue to produce ripe fruit without intermission until late October. The American Institute of New York awarded it the highest certificate of merit upon its introduction. The fruit is medium to large, season of ripening is early. Its canes are absolutely hardy, producing large quantities of delicious fruit. St. Regis may be successfully grown in all soils, light or heavy.

For the home garden, we do not know of a Dewberry that will afford as much real pleasure from a small investment as this variety. It is very easy to grow and a great producer. Twelve plants are sufficient to furnish the table with all the fruit you can use giving you the same quality fruit for years to come, with a little attention to cutting out the old wood after harvesting is over. The fruit can be eaten direct from the vines or placed on the table without an addition of sugar. Every home garden should have sufficient Youngberry plants to enjoy this great fruit.

**LUCRETIA.** The standard variety for the South, also largely planted in the North as it is very hardy, fruit large and firm, will stand long distance shipping.

For prices on Dewberry plants, see page 39.

# TOWNSEND'S *Certified*

## BLACK RASPBERRIES

*Produce 3200 to 6000 Pints per Acre*

Knowing your own local market on black raspberries, you can easily see that it will pay you many times over to invest in Townsend plants fibrous rooted, healthy, and sure big-crop producers.

Tremendous yields and excellent profits are a sure thing for the grower who will invest in a patch of Townsend's black raspberries because we leave no stone unturned to grow plants that are worthy of the Townsend reputation for excellence.

Our customers have learned that the one sure method of stepping up their black raspberry production is to purchase plants which have been thoroughly tested and re-tested several times before being shipped to them for re-planting. Specialists on raspberry plants inspect our nursery rows three to five times during the growing season and carefully remove and destroy all diseased canes so that we are assured that our plants, before digging, are absolutely disease free and in healthy condition for shipment. We do not even stop at this in our efforts to ship you absolutely perfect stock. At digging time, our plants are again carefully gone over and re-inspection is also made at the time your order is filled.

Because of this conscientious, thorough method of disease-prevention, you are assured that such stock as you purchase from us will, with normal care after you have planted it, produce as high as 3200 to 6000 pints per acre, where other plants which have not had such intense care may yield only 800 to 1600 pints per acre. You do not gamble with Townsend plants.

**CUMBERLAND.** In hardiness and production it is unexcelled by any other variety; in spite of the enormous size the fruit is very firm and will withstand long shipments. Bushes very healthy and vigorous; well adapted to supporting their large crop of berries. Season of ripening, midseason to late.

**NEW LOGAN.** Is an outstanding new Black Raspberry variety; probably its two most noteworthy characteristics are that it ripens about a week earlier and is more resistant to the virus diseases. A very productive variety and fruit of good size and quality. If an early berry is desired it is one of the best. It does not crumble.

**PLUM FARMER** is considered by large growers to be the best early black cap variety; strong vigorous upright grower; healthy and very productive. Will withstand drought and cold; berries very juicy, large and attractive, ripening its fruit very fast, consequently the bulk of the crop is off in four or five pickings.

**COLUMBIAN PURPLE.** This is the leading commercial variety of the purple type Raspberry. Berries are firm, of a dark purple and sprightly flavored. A vigorous grower and very productive. Grown extensively in the following States: New York, Pennsylvania, West Virginia, Ohio, Moss., and Conn.

Complete price list Black Raspberries, page 39.



*The Best Market and Canning Black Cap*

**CUMBERLAND**

*Super Quality demands Highest Prices*

<b>Townsend's Heavy Yielding RASPBERRY GARDEN</b>		
<b>150 Plants—Six Varieties</b>		
25 Cumberland	Black	
25 New Logan	Black	
25 Plum Farmer	Black	
25 New Chief	Red	
25 Latham	Red	
25 St. Regis	Red	
Everbearing	Red	
150 Plants		
Cat. Value		<b>\$3.60</b>
		\$7.15
2 COLLECTIONS OF ABOVE		
300 Plants for Only <b>\$7.00</b>		



# Why it will pay you better

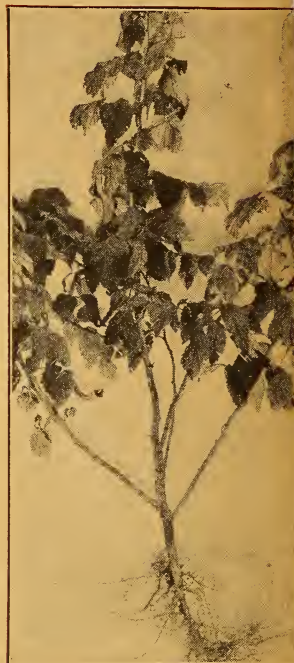
## to buy

These plants are grown to make sure that they can be transplanted successfully without setback to their growing and bearing power. By our method of transplanting in the nursery, heavy fibrous roots are formed, the wood is hardened and fruit spurs started.

## TOWNSEND Fruiting Age PLANTS

This means that you get a plant true to name, trained and developed to take hold in any location, a plant that is far superior in vigor and fruitfulness than any one-year plant that is set out with high hopes (and little else) in the average vineyard or berry patch.

There is no economy in planting very young plants and vines merely because they are cheap. You can't afford to spend several years waiting to see what will happen. Make sure of results by setting out TOWNSEND'S BIG READY-TO-BEAR PLANTS that will bear fruit the first year planted, and fill up your baskets and crates with really worthwhile fruits.



Red Raspberry.

### Jumbo Early-to-Bear GRAPE COLLECTION

- 1 New Champagne. Amber.
- 1 New Coco. Red.
- 1 New Portland. White.
- 1 New Sheridan. Black.
- 1 New Fredonia. Black.
- 1 New Ontario. White.
- 1 Concord. Standard Black.
- 1 Moore's Early. Black.

8 Vines  
All for

**\$2.10**

### Jumbo Early-to-Bear RASPBERRY COLLECTION

- 12 New Chief. Red.
- 12 Heavy Yielding Latham. Red.
- 12 Cumberland. Black.
- 12 New Logan. Black.
- 12 St. Regis, Everbearing. Red.

60 Plants

Special Price

**\$2.85**

### JUMBO EARLY-TO-BEAR BLACKBERRY COLLECTION

- 12 Robinson.
- 12 Eldorado.
- 12 Alfred.
- 12 Early Harvest.
- 12 Youngberry.
- 12 Lucretia.

72 Plants  
for

**\$2.60**

#### FRUITING AGE RED RASPBERRIES

	12 Plants	25 Plants	50 Plants	100 Plants	200 Plants
Chief	\$1.20	\$1.90	\$3.00	\$5.00	\$9.10
Latham	1.15	1.85	2.95	4.85	8.75
St. Regis, Everbearing	1.20	1.90	3.00	5.00	9.10
Katherine, Everbearing	1.30	2.00	3.25	5.60	10.25

#### FRUITING AGE BLACK RASPBERRIES

	12	25	50	100	200
Cumberland	\$1.20	\$1.90	\$3.10	\$5.20	\$9.45
Logan	1.40	2.20	3.60	5.85	10.75
Plum Farmer	1.20	1.90	3.10	5.20	9.45
Columbian Purple	1.40	2.20	3.60	5.85	10.75

#### FRUITING AGE BLACKBERRY PLANTS

	12	25	50	100	200
Alfred	\$1.30	\$2.00	\$3.00	\$5.50	\$10.00
Early Harvest	1.00	1.50	2.40	4.00	7.50
Eldorado	1.00	1.60	2.60	4.50	8.25
Robinson Everbearing	1.30	2.00	3.00	5.50	
Russell	1.00	1.50	2.40	4.00	7.50
Youngberry Dewberry	1.30	2.00	3.00	5.50	10.00
Lucretia	1.00	1.50	2.40	4.00	7.50

#### FRUITING AGE GRAPES

	Each	3	6	12	25	50
Concord	\$0.25	\$0.70	\$0.95	\$1.55	\$3.25	\$5.15
Catawba	.35	.95	1.50	2.55	4.35	7.85
Delaware	.35	.95	1.50	2.55	4.35	7.85
Moore's Early	.35	.85	1.20	2.10	5.75	6.20
Niagara	.35	.85	1.20	2.10	5.75	6.20
Worden	.35	.85	1.20	2.10	5.75	6.20

#### NEWER VARIETIES FRUITING AGE GRAPES

	Each	3	6	12	25	50
Champagne	\$0.50	\$1.30	\$2.20	\$4.10	\$7.70	\$14.50
Ontario	.50	1.30	2.45	4.10	7.70	14.50
Coco	.50	1.30	2.45	4.40	8.50	16.15
Sheridan	.50	1.30	2.45	4.40	8.50	16.15
Fredonia	.60	1.75	3.30	6.20	12.00	23.55
Portland	.60	1.75	3.30	6.20	12.00	23.55

Customers wanting any plants on this page sent Parcel Post prepaid, use Postal Rates at bottom of page 39.



**TOWNSEND'S**  
*Strong 2yr. old*

**BETTER**

**GRAPE  
VINES**

**NEW VARIETIES** of recent  
*introduction*

The following list are new varieties that have been tested for their dependable performance both in the home and garden and field vineyards. You will find in these varieties fruit of the highest quality and in more than one way show supremacy over the standard varieties.

**CACO.** This new red Grape is giving promise of becoming the leading red variety. On our farms this year, it was an outstanding variety, both as to flavor and size of fruit—holding fruit well after ripening.

**FREDONIA.** Originated in New York State Agricultural Experiment Station. Black, ripens very early, berries large, juicy and sweet, borne in large compact clusters, bunches are compact and very attractive.

**ONTARIO.** White. Falls with Portland very closely in ripening. An excellent blending of acid and sugar, hence the taste is sprightly, and yet sweet. Vines strong, vigorous growers, and very productive. Another of New York State Agricultural Station's originations.

**PORTLAND.** New white Grape developed by New York State Experiment Station. Ripens earlier than any other known Grape. Berries large and have that beautiful yellow color like the Niagara. Contains so much sugar that it can be eaten long before it is fully ripe.

**SHERIDAN.** Is the most promising new Grape for commercial growers to compete with California vineyards. It is a late bluish black Grape, large and more attractive than Concord, and is superior in keeping qualities. Fruit is produced in large handsome clusters, and many of them on each vine. We recommend this Grape to all our customers in the Middle Atlantic States.



**CHAMPAGNE**

A delicious white Grape, turning to amber when fully ripe, extremely large and juicy. Never before have we seen as large compact bunches of grapes as this variety produces. Strong sturdy grower. Don't fail to get some of this variety, you will be delighted with them.



Portland, One of the Best White Grapes.

**Complete  
Grape Prices  
Will be Found  
on Page 39.**

**ASSORTMENTS for Home Gardens**

**OFFER NO. 1**

**8** Heavy Yielding 2-Year-Old Grape Vines, fruiting from Early to Late.

- 1 Fredonia. Black.
- 1 Caco. Red.
- 1 Champagne. Amber.
- 1 Moore's Early. Black.
- 1 Concord. Black.
- 1 Niagara. White.
- 1 Catawba. Red.
- 1 Worden. Black.

8 Vines  
Special Price .. **\$1.35**

**OFFER NO. 2**

**18** Selected 2-Year Grape Vines, Including 2 Each of the Newer Varieties.

- 2 Champagne. Amber.
- 2 Caco. Red.
- 2 Fredonia. Black.
- 2 Ontario. White.
- 2 Portland. White.
- 2 Sheridan. Black.
- 2 Concord. Black.
- 2 Moore's Early. Black.
- 2 Catawba. Red.

18 Vines  
Special Price .. **\$2.65**

TOWNSEND'S  
*Strong 2yr. old*

# BETTER GRAPE VINES



Townsend's Vigorous 2-Year Vines.

*Cash in on the profits of Grapes - every farm, village and suburban home will benefit by planting Grapes this year*

No class of fruits bring quicker or larger profits. The easiest way to get the money for the things you want is to plant an assortment—Grapes, Raspberries, Currants, Blackberries, Asparagus, and Strawberries.

High prices are paid for fruits from roadside stands or on the market. Townsend's Wicomico County grown strains are weather hardened and raised on the soil that made Maryland famous for "fruits all over the world."

**Hardy—Fast Growers—Heavy Yielders—Strong 2-Year Caned**

**IVES.** This is one of the outstanding wine grapes. Color bright red, close set on the bunches, rather a heavy producer. Planted heavily before prohibition for the wineries. Now there is not enough stock to go around. We would advise the planting of this fine variety to a large extent for steady income.

**CONCORD.** The most extensively planted black Grape; bunches compact and of excellent quality, a perfect hardy grower and very productive. Season of ripening, midseason to late.

**CATAWBA.** Late ripening Grape, large, firm and very sweet, fruit of copper red color, produced in large compact bunches.

**DELAWARE.** The standard of excellence; ripens early; juicy and sweet berries of amber color; vines hardy and productive.

**MOORE'S EARLY.** A seedling of Concord, ripens two weeks earlier, producing large black fruit of excellent quality. One of the best black Grapes.

**NIAGARA.** One of the largest white Grapes; handsome compact bunches: delicious flavor. A strong grower ripening with Concord.

**WORDEN.** Very popular bluish black, ripens two weeks earlier than Concord. Large compact bunches, excellent flavor and hardy grower.

**Complete Grape prices will be found on page 39.**



A Typical Townsend Vineyard—Your Assurance of a Bumper Crop.

# BLACKBERRY PLANTS

*from Root cuttings*

The High Standard that we have set for the strawberry world to follow is duplicated in the Blackberry plants we grow for our trade.

Because we know that plants developed from root cuttings are far superior to "Tip" or "Sucker" plants, ALL of our plants are grown from root cuttings. They produce fine, strong, healthy canes and fruit that is far superior.

Whether you buy from us or not, DEMAND PLANTS PROPAGATED FROM ROOT CUTTINGS. Ours always produce highly satisfactory results for our customers. You will be delighted with them.

**ALFRED.** Recent introduction; midseason fruiting, extreme large black berries, practically free from seeds and coreless; very sweet and juicy.

**SNYDER.** One of the old favorites that is popular on account of its high quality and early ripening.

**EARLY HARVEST.** Earliest to ripen and most productive of the early varieties, and demands the top of the market. We offer only selected strain of this variety.

**ELDORADO.** Most valuable variety for market or home use. Rich flavor with but little core. Finest quality of the Blackberry family.

**BEST OF ALL.** (Known as Russell B. B. in N. J.) A new Blackberry that has been grown in the sandy soil section of New Jersey and as stated by the N. J. Agricultural Station, is very resistant to Orange Rust; outyielding all other Blackberries that have been tried there. It will pay the Blackberry grower to order some of these plants, in which our stock is being supplied you direct from original stock furnished by the originator.

## CURRENTS

Prices: 25c each; 6 to 10, 20c each; 50 to 100, 15c each.

Hardy, requiring little cultivation, even withstanding considerable neglect, the Currant has large marketing possibilities, as it is almost indispensable for table use, being used universally in making perhaps the finest of all jellies and in a great demand by the housewife in many other ways. The home garden, everywhere, is incomplete without this luscious fruit.

**Culture:** Set the plants four feet apart in rich ground. Cultivate well and mulch heavily. Prune out old wood so that each remaining shoot will have plenty of room. Dust with Hellebore to eliminate the currant worm.

**CHERRY.** Large berries on short clusters; a robust, fruitful variety. The vigorous, stocky bushes produce large quantities of bright red fruit with thin skins and remarkably fine flavor.

**LONDON MARKET.** Large, red, fine. Very productive and of extra high quality. Rich, mild, sub-acid.

**WILDER.** Bunch and berries very large, bright, attractive red color, even when dead ripe. Flavor not too acid and fruit continues on bush for quite a period.

**PERFECTION.** Beautiful, bright red, holding its large size to end of bunch. Easy to pick—a superior bearer—less acid and of better quality than any other large currant.

**WHITE GRAPE.** Very large, yellowish white. Mild acid flavor. Extremely valuable for table use.

## GOOSEBERRIES

Prices: 25c each; 6 to 10, 20c each; 50 to 100, 15c each.

This fruit continues to retain its popularity throughout the years and is well worthy of every home garden as well as a good item for the commercial grower to include, in some quantity, in his list of small fruits.

**Culture:**—The Gooseberry requires a deep soil, well manured, which, if dry, should be mulched thoroughly to retain the moisture. Careful trimming and pruning is necessary to produce a maximum yield of fruit. Set plants 3 to 4 feet apart. To prevent mildew, spray bushes as soon as leaves appear and several times during the summer with Potassium Sulphide—one ounce to four gallons of water.

**DOWNING.** Large, handsome, pale green; of splendid quality for both cooking and table use. The plant is strong and usually free from mildew.

**RED JACKET.** This is the most free from mildew of all the leading varieties. The fruit is large, smooth, pale red in color, fine flavored, and is produced in great abundance.



## The New Everbearing ROBINSON Blackberry

This new Everbearing Blackberry has proven to be a profitable fall cropping variety as well as producing a fine crop of extra large solid berries along with the other well known blackberry varieties that produce their crop only in the early summer months. This variety has been tested in several states and is not in the experimental stage, having passed the test of a profitable variety for the market gardener fruit grower as well as home gardeners. It takes no more attention for them than the ordinary Blackberry, and is sure to be of great benefit throughout the coming years to the fruit grower who is catering to the roadside markets.

For prices on the new Robinson Everbearing, see page 39. For Fruiting Age Plants, see page 30.



Downing Gooseberries.



# APPLE TREES

No Better  
At Any Price

	1-9	10-49	50-299
5-6 ft. ....	\$0.70	\$0.65	\$0.60
4-5 ft. ....	.55	.50	.45
3-4 ft. ....	.45	.40	.35
2-3 ft. ....	.40	.35	.30

Ask for prices on special quantities.

Here are a fine lot of heavy bearers selected by Townsend. They are the choicest for cooking and eating. A half dozen or so trees will give an abundance for jelly, eating, butter, and gallons of

cider, as well as supplying ripened fruit for the long winter months.

You won't go wrong when you plant the famous "Townsend Approved" varieties.

**BALDWIN.** Winter. Large, deep red, good keeper. Nov.

**DUCHESS.** Autumn. Large and symmetrical, flesh yellowish white and firm.

**EARLY McINTOSH.** Highest quality for home and market. Beautiful bright red in color.



## TWO IMPROVED VARIETIES

**RED DELICIOUS.** This is a large apple with a surface almost covered with a brilliant dark red, blending to golden yellow at the blossom end. The tree is hardy, healthy and vigorous and bears regular annual crops. The flesh is fine grained, crisp and melting, juicy, delightfully aromatic, moderately sub-acid to give a pleasing flavor. Quality very good to best. Keeping qualities good. No addition in price.

**NEW CORTLAND.** Cortland Apples, says Professor U. P. Hedrick, of New York State Agricultural Experiment station, cannot be surpassed by apples grown anywhere in the world, and apple growers in New York and New England have an opportunity to specialize in a distinctive fruit that will bring renown and profit to the industry of the region. Ripens in late fall. Flesh white, fine grained and larger than the McIntosh, aromatic flavor, making it fine for a dessert apple. No addition in price.

**GRIMES GOLDEN.** Late fall. Best yellow fall apple. Firm, fine grained, juicy, with mild pleasant flavor.

**JONATHAN.** Late fall. Young and heavy bearer. Attractive red, highly colored and flavored. Flesh white, tender, juicy and rich.

**McINTOSH.** Late fall. An outstanding apple for Commercial Growers. A bright red, spicy flavor, fine eating and keeps well.

**ROME BEAUTY.** Winter. Large yellow shaded red stripes, juicy, tender and sub-acid.

**STAYMAN'S WINESAP.** Late fall. Excellent for eating, and market. Dark red, tinged yellow, with rich and satisfying flavor.

**WEALTHY.** Early fall. Large, round fruit, with dark red markings. Flesh white, tender and sub-acid.

**WILLIAMS EARLY RED.** Fall. Very beautiful bright red, fine for dessert. Mild flavor. Early and reliable.

**WINTER BANANA.** Early winter. Fancy market and late apple. Flesh lemon yellow with bright red cheek. Rich banana flavor.

**YELLOW TRANSPARENT.** Early summer. Best yellow early, fruit good size, waxy yellow skin, flesh white, mild and juicy.

**YORK IMPERIAL.** Winter. Medium uniform size and usually oblique shape. Skin green or yellowish shaded with crimson, mild sub-acid flavor.

Best Six

## APPLE ORCHARD

Delicious apples from early summer until late spring following.

New Cortland	Yellow Transparent
Red Delicious	Grimes Golden
Winter Banana	McIntosh

Strong-rooted, 5-6 ft. Specimens.

SPECIAL **\$2.85**  
"6" for

You get 75 strawberry plants free, value \$1.05, with this special offer.

# Cherry Trees A Good Cherry Orchard Always Pays



## TOWNSEND'S Heavy Bearing Varieties

4'-5'	1-9	10-49	50-299
3'-4'	\$0.85	\$0.75	\$0.70
2'-3'	.80	.70	.65
	.75	.65	.60

Note: For SWEET CHERRY PRICES, add 15c.

## SWEET CHERRIES BEST FOR CANNING

PRICES OF SOUR CHERRIES PER TREE

4'-5'	1-9	10-49	50-299
3'-4'	\$0.85	\$0.75	\$0.70
2'-3'	.80	.70	.65
	.75	.65	.60

**BLACK TARTARIAN.** Makes a beautiful erect growth; a heavy bearer. Ripens in late June and July. Fruit is purplish in color, rich and juicy.

**GOVERNOR WOOD.** A healthy grower and abundant bearer. Large yellow fruit, covered with bright red. Ripens middle of June.

**YELLOW SPANISH.** Ripens end of June. Fine for canning. Fruit large with golden coloring tinted with crimson.

## SOUR CHERRIES

For Making Pies

**EARLY RICHMOND.** June. Sour red, the earliest of Sour Cherries. Fruit round, skin thin, rather tough, and easily separated from the pulp and requires small amount of sugar when canning.

**ENGLISH MORELLO.** Late July and early Aug. The only real late Cherry. Tree grows quite small, and of dwarf habit. Fruit good size, nearly black.

**MONTMORENCY.** Large. Late June. A commercial variety in popular demand. Tree bears young, within 2 years after

planting. Fruit of good size, bright clear red.

*Free!*

\$1.05 worth Strawberry Plants

As a special introductory offer we will give absolutely free with each Fruit Tree Collection in catalog 75 Strawberry plants as follows:

- 25 Plants Mastodon
- 25 Plants Howard Supreme
- 25 Town King.

Only one offer allowed to a customer.

You can make money out of Strawberries. Try these 75 plants with our compliments.

### CHERRY OFFER 4 for \$2.95

1 each  
Montmorency  
Black Tartarian  
Gov. Wood  
Early Richmond  
You get 75 Strawberry plants free, value \$1.05, with this special offer.

# TOWNSEND *Imperial* PLUM TREES

5'-6'	1-9	10-49	50-299
4'-5'	\$0.90	\$0.85	\$0.80
3'-4'	.85	.80	.75
	.80	.75	.70

Here are the best Plums, hardy heavy bearers. Always plant several varieties together so that they can cross-pollinize. They will bear much better.

**ABUNDANCE.** (Japanese). Skin pinkish red, changing to dark red. Ripens late Aug. or early Sept. Fruit medium size, roundish, flesh yellow, tender and sweet.

**GREEN GAGE.** The sweetest eating and canning Plum, large greenish yellow, very delicious.

**SHROPSHIRE DAMSON.** Skin purplish black, flesh golden yellow, juicy, firm and tender. Every home ought to have a tree or two.

### Two Outstanding Plums Recommended by Townsend.

**BURBANK.** A triumph of the genius of "The Master Horticulturist." Remarkably successful all over the country. It seems to succeed in any soil. Fruit large, dark red or purplish with thin lilac bloom. Flesh amber-yellow with rich sugary flavor. It's a dandy.

**GERMAN PRUNE.** Excellent for drying, preserving or dessert. Large fine fruit that is firm, sweet and delicious. We have nothing to offer that will take its place. Every home should have a few trees; the fruit will carry you through the winter season.



## A FRUIT COLLECTION

For the SMALL PLANTER, ROADSIDE STAND, COUNTRY ESTATE.

- 1 Richmond Cherry
- 1 Gov. Wood Cherry
- 1 Golden Jubilee Peach
- 1 South Haven Peach
- 1 Burbank Plum
- 1 German Prune
- 1 New Douglas Pear
- 1 Bartlett Pear
- 1 New Cortland Apple
- 1 Red Delicious Apple
- 1 Yellow Delicious Apple
- 1 Yellow Transparent Apple
- 1 Winter Banana Apple.

12 Large Townsend Approved Specimen Trees

for **\$6.95**

You get 75 Strawberry plants free, value \$1.05, with this special fruit collection.

# Peaches *Townsend* are Specialists

Our nurseries are located in the most favorable sections of the country for growing Peach Trees. Soil and climatic conditions are ideal for producing a good fibrous root system, straight bodies and well balanced tops.

Better fruit can only come from better trees, correctly fertilized, pruned and cultivated. Back of these trees must be parent trees of proven character and performance. That's why "Townsend Approved" Trees are most dependable.

PRICES ON PEACH TREES:	1-9	10-49	50-299
Large Selected, 5-6 ft. ....	45c	40c	35c
Extra Planters Grade, 4-5 ft. ....	40c	35c	30c
Choice Medium Grade, 3-4 ft. ....	35c	30c	25c
Selected, 2-3 ft. ....	30c	25c	20c

**BELLE OF GEORGIA.** Large white with blush, freestone, flesh white, firm and delicious, good bearer.

**CARMAN.** Very hardy and profitable market variety. Free from rot and excellent shipper. Pale yellow with deep blush, skin tough, good flavor.

**CHAMPION.** Fine freestone. The fruit is large creamy white with red cheek. Flesh sweet, juicy, very high flavor. A good shipper.

**CRAWFORD'S LATE.** Large, deep yellow with red cheek, freestone. Flesh is yellow, firm; hardy and good bearer.

**CRAWFORD'S EARLY.** Large bright yellow with red blush, freestone. Flesh is yellow, juicy, sweet and of fine flavor.

**EARLY ELBERTA.** Ripens about a week earlier than Elberta. It's the same old reliable peach like its sister Late Elberta. Fruit large golden yellow with brilliant shades of red.

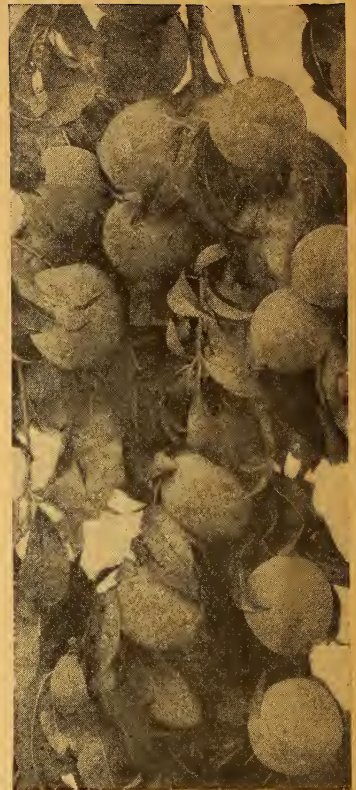
**GREENSBORO.** A white-fleshed, showy fruit, well thought of by dealers. Tree is very large and spreading, stands heat and cold. The fruit is not as good as the others, but keeps a long time.

**HILEY.** The peaches are large in size and handsomely colored. Fruits are not quite as uniform in size as could be desired for a commercial variety, yet there is always room for Hiley.

**J. H. HALE.** Is considered best peach of the season for home and market. The chief fault is that it runs small in size. Very vigorous and hardy variety, extremely early and very popular.

**ROCHESTER.** Precedes the Early Crawford by a week, is very prolific and hardy, does well in cold peach sections. Skin is thick and tough, which makes it a good shipper. Light yellow to orange.

**ROBERTA.** New variety that has proven very popular. It is similar to the Elberta in many respects but about ten days later. A grand variety to lengthen the Elberta season.



## Golden Jubilee Peach

Today's outstanding early yellow freestone.

- \* Ripens four weeks before Elberta.
- \* Very hardy. Buds resist winter freezes.
- \* High quality. Grand luscious golden yellow flesh.
- \* Blossoms are self-fertile.

### DELUXE Peach Offer

- 1 Golden Jubilee
- 1 South Haven
- 1 Elberta
- 1 Crawford
- 1 J. H. Hale
- 1 Rochester

Extra Planters Grade

All Six **\$1.95**  
for

You get 75 strawberry plants free, value \$1.05, with Deluxe peach offer.

## SOUTH HAVEN PEACH

- \* A big yellow golden color with red cheek.
- \* Immense productiveness.
- \* Fruit farmers are now planting whole orchards of this wonder peach.
- \* Ripens 14-20 days earlier than Elberta.
- \* Trees hardy, quick growing, young bearing.
- \* Combines all the good qualities of the famous Elberta.



Strong Fibrous Roots.

## Pears

Strong 2-year heavily rooted worth-while varieties that give a world of satisfaction.

PRICES:	1-9	10-49	50-299
Large Selected, 2-yr., 5-6 ft. ....	90c	85c	80c
Choice Med. Grade, 2-yr., 4-5 ft. . .	80c	75c	70c
Selected Small Size, 2-yr., 3-4 ft. . .	70c	65c	60c

**BARTLETT.** One of the finest dessert and eating Pears. Heavy producer. Golden yellow with red cheek.

**CLAPP'S FAVORITE.** Large pale yellow with red cheek. Tree hardy and does well everywhere. Fruit fine grained, sweet and highly flavored.

**DUCHESS** (d'Angouleme). Excellent keeper, bright yellow, juicy.

**KIEFFER.** The old reliable canning Pear. Fruit is large, yellow, and of fine quality. Tree hardy and bears very late. Sure cropper and does well everywhere.

**SECKEL.** A small rich sugar Pear, widely grown for table use, preserving, pickling, etc. The trees succeed everywhere.

**NEW DOUGLAS** A new variety that is blight proof, and resistant to cold; does well in all soils and localities. A beautiful large smooth Pear, golden yellow color, flecked with russet; sweet, melting and juicy. At no additional price.

### PEAR OFFER

(Choice Medium Grade)

- 1 New Douglas
- 1 Bartlett
- 1 Seckel
- 1 Kieffer
- 1 Duchess

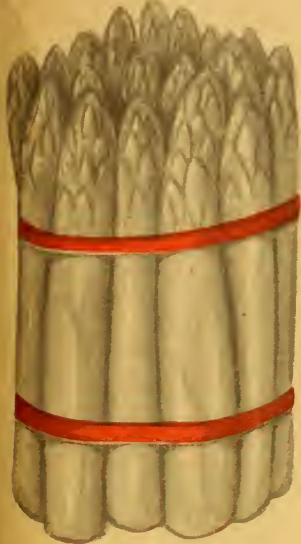
5 for **\$3.15**

75 Strawberry plants will be included free, value \$1.05, with this Pear offer.

# Don't Neglect the Home Garden

There is no greater pleasure and no greater money-saver than for the home owner to create a vegetable garden in his own back yard in which he may plant vegetables of his own choosing and, with a little care, produce enough vegetables to keep the home larder full throughout the growing season.

No garden is complete without its quota of Asparagus and Rhubarb, the only two items which space will permit us listing and describing in this catalogue. Our full line of vegetables is included in another booklet which you may have on request.



Washington Asparagus.

## ASPARAGUS

Plenty of Asparagus for a family of six can be grown on a plot 12 feet by 16 feet. In small gardens the Asparagus bed can be placed in one corner or along the fence. The crowns of plants should be 8 inches below the surface and the roots well spread out. Space them 12 inches apart in rows 3 feet wide for garden culture. For field culture, plants should be spaced 18 inches apart in rows 6 to 8 feet apart. An Asparagus bed, properly cared for, will produce good results for 17 years. Our 3-year size roots will produce Asparagus the first year set.

**MARTHA WASHINGTON.** A strain selected from the Washington variety, much heavier stock, a greater producer than the original Washington variety. Practically blight-resistant.

**PEDIGREE WASHINGTON.** This new variety is the first result of a blister proof campaign for the eradication of Asparagus rust. As far as possible a resistant, vigorous, and high yielding Asparagus. The tips are of uniform size with good top buds of rapid growth. Exceptionally tender and delicious.

ASPARAGUS PRICES	25	50	100	250	1000
1 year .....	\$0.40	\$0.65	\$1.00	\$2.00	\$6.00
2 year .....	.55	.85	1.20	2.35	7.50
3 year .....	1.00	1.50	2.00	4.00	12.00

500 plants at thousand rate, ask for special price on lots of 5000 or more.

Asparagus by Parcel Post, add 8c each 25 plants to cover postage.

## RHUBARB

Rhubarb pie and sauce have just the right tartness and flavor that one desires during the first days of spring. Rhubarb is easily grown, and 6 to 10 hills will supply the average family. Any out-of-the-way place will be suitable for Rhubarb. Hills should be spaced 4 feet apart, and about every 7 years the hills should be divided, and roots reset.

**MYATT'S LINNAEUS.** Large, tender and fine, one of the very best to plant, makes good sauce and pies.

**QUEEN.** Extra strong grower of large stocks of a pink color. For cooking in any way its quality is unsurpassed.

### RHUBARB PRICES

Each .....	\$0.10	25 roots ..	\$1.50
6 roots ....	.55	50 roots ..	2.50
12 roots ....	.85	100 roots ..	3.50

Rhubarb by parcel post, add 3 cents each plant to cover postage.



Giant Victoria Rhubarb.

## SWEET POTATO PLANTS

Delivery any time after May 20th.

Ask for Our Illustrated Folder on Sweet Potato Plants.

**MARYLAND GOLDEN.** We are only listing one variety of sweet potato plant, as we consider the **New Maryland Golden** far superior to any variety now on the market, it having produced this past year on our farms, where we grow no other variety, 400 bushels of number one potatoes to the acre. Every market in the country receiving **Maryland Golden** has praised it highly, the daily market reports in such markets as Pittsburgh, New York, Detroit and Cleveland quote this variety from 25 to 40 cents premium over any other. The color is just what the market wants, a deep rich golden yellow, with a slight pinkish cast, holding its color perfectly when cooked. It is not of the dry type like Little Stem Jersey, or of the wet type like the Yam, being only slightly moist at any state of maturity. This variety was originated at the Maryland State Agricultural College in 1930, a few of these plants being distributed in 1931 for testing. It created a sensation among the sweet potato growers of this section to such an extent that at the present time plants are very scarce, and meet with a ready sale. We are offering our customers, in limited quantities only, plants grown from certified seed, and would advise anyone interested in growing sweet potatoes for market or home use to set some of this variety. You will be pleased with them.

### SWEET POTATO PLANT PRICES

100 plants, 75c; 250 plants, \$1.00; 500 plants, \$1.75; 1000 plants, \$3.00.

**MARYLAND GOLDEN CERTIFIED SEED.** For growers who wish to grow their own **Maryland Golden** plants, we offer certified seed stock, delivery of which can be made any time from our storage house. Price, per bu., \$2.25.

Write for Special Prices on Lots of 10 Bushels or More.

### SWEET POTATO PLANTS BY MAIL

If Sweet Potato Plants are to be shipped by Parcel Post, use same rates as for Strawberry Plants, found on page 39.



Maryland Golden Sweet Potato.

# WORLD'S LARGEST GROWERS TOWNSEND'S OF STRAWBERRY PLANTS

Tru To Name Plants. Guaranteed Satisfaction.

## 1935 Strawberry Plant Prices

All prices quoted below are F.O.B. Salisbury, Maryland, and in effect from January the 1st until June 1st, 1935. Customers ordering plants sent Parcel Post prepaid, see Parcel Post Rates on page 39. We ship a limited number of strawberry plants in late summer and fall. Customers wanting plants for planting at that time, ask for our Special Late Summer and Fall Price List. All plants are tied 25 to bundle. No less than 25 plants of variety sold.

Description of varieties will be found on page

EARLY VARIETIES		25 Plants	50 Plants	100 Plants	200 Plants	300 Plants	400 Plants	1000 Plants	3000 Plants	4000 Plants	5000 Plants
9	<b>ABERDEEN</b> .....	\$0.25	\$0.40	\$0.60	\$1.00	\$1.35	\$1.60	\$3.50	\$10.00	\$13.00	\$15.00
10	Beaver .....	.25	.40	.65	1.10	1.50	1.80	4.00	11.70	15.20	18.75
7	Bellmar .....	.30	.40	.65	1.10	1.50	1.80	4.00	11.55	15.00	17.50
7	<b>BLAKEMORE</b> .....	.25	.40	.60	1.00	1.35	1.60	3.50	10.20	13.20	16.25
10	Campbell's Early .....	.30	.40	.65	1.10	1.50	1.80	4.00	11.70	15.20	18.75
20	<b>DORSETT</b> .....	.35	.50	.85	1.50	2.10	2.60	6.00	17.55	23.00	27.50
8	<b>FAIRFAX</b> .....	.35	.50	.85	1.50	2.10	2.60	6.00	17.55	23.00	27.50
5	<b>HOWARD SUPREME (Imp.)</b> .....	.40	.55	1.10	1.80	2.40	3.00	7.00	20.55	27.00	32.50
6	Howard 17 .....	.25	.40	.65	1.10	1.50	1.80	4.00	11.70	15.20	18.75
10	Fruitland .....	.30	.45	.75	1.30	1.80	2.20	5.00	14.70	19.20	23.75
10	Klondyke .....	.25	.40	.60	1.00	1.35	1.60	3.50	10.00	13.00	15.00
7	<b>MISSIONARY</b> .....	.25	.40	.60	1.00	1.35	1.60	3.50	10.00	13.00	15.00
6	<b>PREMIER</b> .....	.25	.40	.65	1.10	1.50	1.80	4.00	11.70	15.20	18.75
10	Red Gold .....	.30	.45	.75	1.30	1.80	2.20	5.00	14.70	19.20	23.75
10	Southland .....	.30	.45	.75	1.30	1.80	2.20	5.00	14.70	19.20	23.75
10	Success .....	.30	.40	.65	1.10	1.50	1.80	4.00	11.70	15.20	18.75
<b>MEDIUM EARLY TO LATE</b>											
12	Beauty .....	.30	.40	.65	1.10	1.50	1.80	4.00	11.70	15.20	18.75
11	<b>BIG JOE</b> .....	.30	.45	.70	1.20	1.65	2.00	4.50	13.20	17.20	21.25
10	Cooper .....	.30	.45	.75	1.30	1.80	2.20	5.00	14.70	19.20	23.75
10	<b>DR. BURRILL</b> .....	.30	.45	.75	1.30	1.50	1.80	4.00	11.70	15.20	18.75
12	Gibson .....	.25	.40	.60	1.00	1.35	1.60	3.50	10.00	13.00	15.00
11	<b>JUPITER (Patented)</b> .....	.40	.55	1.10	1.80	2.40	3.00	7.00	20.55	27.00	32.50
10	Marshall .....	.30	.45	.75	1.30	1.80	2.20	5.00	14.70	19.20	23.75
12	<b>MAY QUEEN (Imp)</b> .....	.50	.75	1.25	2.10	3.00	3.80	9.00	Stock Limited		
12	Parsons Beauty .....	.25	.40	.60	1.00	1.35	1.60	3.50	10.00	13.00	15.00
10	Red Heart .....	.35	.50	.85	1.50	2.10	2.60	6.00	Stock Limited		
10	<b>SENATOR DUNLAP</b> .....	.30	.45	.75	1.30	1.50	1.80	4.00	11.70	15.20	18.75
10	<b>SHARPLESS</b> .....	.50	.75	1.25	2.10	3.00	3.80	9.00	Stock Limited		
<b>LATE TO VERY LATE</b>											
15	<b>AROMA</b> .....	.30	.40	.65	1.10	1.50	1.80	4.00	11.55	15.00	17.50
18	Brandywine .....	.30	.45	.75	1.30	1.80	2.20	5.00	14.70	19.20	23.75
13	<b>TOWNSEND'S BIG LATE (Imp)</b> .....	.30	.40	.65	1.10	1.50	1.80	4.00	11.55	15.00	17.50
19	<b>CHESAPEAKE</b> .....	.30	.45	.75	1.30	1.80	2.20	5.00	14.70	19.20	23.75
19	<b>FORD</b> .....	.30	.40	.65	1.10	1.50	1.80	4.00	11.55	15.00	17.50
15	<b>GANDY</b> .....	.25	.40	.60	1.00	1.35	1.60	3.50	10.00	13.00	15.00
19	Lupton .....	.30	.45	.70	1.20	1.65	2.00	4.50	13.20	17.20	21.25
18	Sample (Imp.) .....	.30	.40	.65	1.10	1.50	1.80	4.00	11.55	15.00	17.50
21	<b>"TOWN KING"</b> .....	.30	.45	.75	1.30	1.80	2.20	5.00	14.70	19.20	23.75
18	Washington .....	.25	.40	.60	1.00	1.35	1.60	3.50	10.00	13.00	15.00
18	<b>W.M. BELT</b> .....	.25	.40	.60	1.00	1.35	1.60	3.50	10.00	13.00	15.00
18	Wil-son .....	.25	.40	.60	1.00	1.35	1.60	3.50	10.00	13.00	15.00
18	World's Wonder .....	.50	.75	1.25	2.10	3.00	3.80	9.00	Stock Limited		
6	<b>SURPLUS PLANTS</b> .....	Not less than 1000 Surplus Plants sold						2.75	7.75	10.25	12.50
<b>FALL BEARING STRAWBERRIES</b>											
23	<b>ALDRICH</b> .....	.50	.75	1.25	2.10	3.00	3.80	9.00	26.25	34.00	
23	<b>LUCKY STRIKE</b> .....	.50	.75	1.25	2.10	3.00	3.80	9.00	26.25	34.00	
23	<b>MASTODON</b> .....	.35	.55	1.10	1.80	2.40	3.00	7.00	20.55	27.00	32.50

500 plants sold at the 1000 rate.

(Orders calling for large quantities, write for special prices)

\*Varieties marked (Imp) are imperfect flowering and must be set with perfect flowering varieties of same season; at least one row perfect flowering to every three rows imperfect flowering. All varieties not marked are perfect flowering and need no other varieties to fruit with them.



# TOWNSEND'S 1935 PRICE LIST

Spring Delivery  
January until June 1st

Fall Delivery  
After November 1st

## RASPBERRIES—BLACKBERRIES—DEWBERRIES—GRAPES

All prices quoted below are F.O.B. Salisbury, Maryland, and in effect from January the 1st until June 15th. Customers ordering plants sent PARCEL POST, PREPAID, see PARCEL POST RATES at bottom of page. Fall shipping season opens November 1st on all stock listed on this page. Write for our LATE FALL PRICE LIST if you anticipate fall setting.

Description of varieties  
will be found  
on page

### RED RASPBERRY PLANTS

For prices on bearing age plants, see page 30.

	12 Plants	25 Plants	50 Plants	100 Plants	200 Plants	300 Plants	400 Plants	500 Plants	1000 Plants
26 CHIEF. Select 1-yr. No. 1 .....	\$0.80	\$1.15	\$1.80	\$2.80	\$4.60	\$6.25	\$ 7.70	\$ 8.50	\$16.00
27 LATHAM. Select 1-yr. No. 1 .....	.65	1.10	1.70	2.60	4.25	5.65	6.90	8.00	15.00
28 KATHERINE (Evgb.) Select 1-yr. No. 1 .....	.85	1.25	2.00	3.35	5.75	7.90	9.90	11.50	22.00
28 St. Regis. (Evgb.) Select 1-yr. No. 1 .....	.65	1.10	1.70	2.60	4.25	5.65	6.90	8.00	15.00
NEWBURGH. Select 1-yr. No. 1 .....	1.25	2.20	4.00	7.50	14.50	21.00	27.00	32.50	

### BLACK RASPBERRY PLANTS

For prices on bearing age plants, see page 30.

29 CUMBERLAND. Select 1-yr. No. 1 Tips .....	.65	1.10	1.70	2.60	4.25	5.65	6.90	7.50	14.40
29 LOGAN. Select 1-yr. No. 1 Tips .....	.80	1.15	1.80	2.80	4.60	6.25	7.70	8.85	17.00
29 PLUM FARMER. Select 1-yr. No. 1 Tips .....	.65	1.10	1.70	2.60	4.25	5.65	6.90	8.00	15.00
29 QUILLEN. Select 1-yr. No. 1 Tips .....	.80	1.15	1.80	2.80	4.60	6.25	7.70	8.85	17.00

### PURPLE RASPBERRY PLANTS

For prices on bearing age plants, see page 30.

29 Columbian Purple. Select 1-yr. No. 1 Tips .....	.95	1.45	2.35	3.60	6.25	8.65	10.90	12.00	22.50
29 Potomac. (New). Select 1-yr. No. 1 Tips .....	2.00	3.00	5.00	9.00	Stock of this variety limited.				

### BLACKBERRY PLANTS

All Blackberry plants grown from root cuttings.

For prices on bearing age plants, see page 30.

33 ALFRED. Select 1-yr. No. 1 .....	.95	1.45	2.35	3.60	6.25	8.65	10.90	12.00	22.50
33 EARLY HARVEST. Select 1-yr. No. 1 .....	.65	1.10	1.70	2.60	4.25	5.65	6.90	7.50	14.40
33 ELDERADO. Select 1-yr. No. 1 .....	.80	1.15	1.85	2.95	4.95	6.85	8.55	10.25	19.65
33 ROBINSON. Everbearing Select 1-yr. No. 1 .....	.95	1.45	2.35	3.60	6.25	8.65	10.90	12.00	22.50
33 RUSSELL. Select 1-yr. No. 1 .....	.95	1.45	2.35	3.60	6.25	8.65	10.00	11.00	21.00

### DEWBERRIES

For prices on bearing age plants, see page 30.

28 Lucretia. Select 1-yr. No. 1 Tips .....	.80	1.10	1.75	2.70	4.45	5.90	7.30	8.50	16.00
28 YOUNGBERRY. (New.) Select 1-yr. No. 1 Tips ..	.95	1.45	2.35	3.60	6.25	8.65	10.90	13.00	25.00

### GRAPES

For prices on bearing age grape vines, see page 30.

	Each	3 Vines	6 Vines	12 Vines	25 Vines	50 Vines	100 Vines	200 Vines	300 Vines	400 Vines	500 Vines
32 CONCORD. Strong 2-yr. No. 1 ..	\$0.18	\$0.50	\$0.95	\$1.45	\$2.50	\$4.00	\$7.00	\$13.00	\$18.75	\$24.50	\$30.00
32 CONCORD. Select 1-yr. No. 1 ..	.16	.45	.85	1.20	2.00	3.50	6.00	11.00	15.75	20.50	25.00
32 CATAWBA. Strong 2-yr. No. 1 ..	.25	.70	1.20	2.30	4.50	8.00	15.00	Supply of red grapes limited.			
32 DELAWARE. Strong 2-yr. No. 1 ..	.25	.70	1.20	2.30	4.50	8.00	15.00				
32 IVES. Strong 1-yr. No. 1 .....	.25	.70	1.20	2.30	4.50	8.00	15.00				
32 MOORE'S EARLY. Strong 2-yr. No. 1 ..	.19	.55	1.00	1.60	2.75	4.50	8.00	15.00	21.75	28.50	35.00
32 NIAGARA. Strong 2-yr. No. 1 ..	.19	.55	1.00	1.60	2.75	4.50	8.00	15.00	21.75	28.50	35.00
32 WORDEN. Strong 2-yr. No. 1 ..	.19	.55	1.00	1.60	2.75	4.50	8.00	15.00	21.75	28.50	35.00

### GRAPES — NEWER VARIETIES

For prices on bearing age grape vines, see page 30.

31 CACO. Strong 2-yr. No. 1 .....	.35	.90	1.70	3.15	6.10	11.75	22.60				
31 Champagne. Strong 2-yr. No. 1 ..	.30	.75	1.25	2.35	4.40	8.30	15.60				
31 FREDONIA. Strong 2-yr. No. 1 ..	.35	1.00	1.90	3.55	6.95	13.45	25.80				
31 ONTARIO. Strong 2-yr. No. 1 ..	.30	.80	1.40	2.55	4.85	9.25	17.60				
31 PORTLAND. Strong 2-yr. No. 1 ..	.35	1.00	1.90	3.55	6.95	13.45	25.80				
31 SHERIDAN. Strong 2-yr. No. 1 ..	.35	1.00	1.90	3.55	6.95	13.45	25.80				

PRICES on other Nursery Stock offered in catalogue and not listed on pages 33 and 39 will be found on following pages: Gooseberry and Currant prices, page 33; Apple Tree prices, page 34; Cherry and Plum Tree prices, page 35; Peach and Pear Tree prices, page 36; Asparagus, Rhubarb, Sweet Potato Plants, page 37.

### CUSTOMERS ORDERING PLANTS BY MAIL, USE FOLLOWING TABLES FOR CORRECT POSTAGE

Be sure to include sufficient postage for your order if plants are to be sent Prepaid. We will return every penny due you if you send too much. If insufficient postage is sent, we will credit amount paid and send balance C.O.D.

#### Parcel Post Rates on Strawberry and Potato Plants

	Zones 1-2	Zone 3	Zone 4	Zone 5	Zone 6	Zone 7	Zone 8
100 Plants	\$.10	\$.14	\$.21	\$.28	\$.35	\$.43	\$.50
200 "	.13	.20	.33	.46	.59	.73	.86
300 "	.16	.26	.45	.64	.83	1.03	1.22
400 "	.21	.36	.65	.94	1.23	1.53	1.82
500 "	.26	.46	.85	1.24	1.63	2.03	2.42
600 "	.20	.52	.97	1.42	1.88	2.33	2.78
700 "	.31	.56	1.05	1.54	2.03	2.53	3.02
800 "	.36	.66	1.25	1.84	2.44	3.03	3.62
900 "	.38	.70	1.33	1.96	2.59	3.23	3.86
1000 "	.41	.76	1.45	2.14	2.84	3.53	4.22
2000 "	.56	1.06					

On all orders of 500 or more Strawberry plants or Sweet Potato plants, the rate is cheaper by Express after the third zone.

#### Parcel Post Rates on Grape Vines, Raspberries, Blackberries, Currants, Gooseberries, and Dewberries

	Zones 1-2	Zone 3	Zone 4	Zone 5	Zone 6	Zone 7	Zone 8
1 to 2 Plants	\$.08	\$.09	\$.10	\$.11	\$.12	\$.14	\$.15
3 to 6 "	.13	.17	.24	.33	.40	.50	.59
7 to 12 "	.14	.19	.28	.38	.47	.59	.70
13 to 20 "	.15	.21	.31	.43	.54	.68	.81
21 to 25 "	.16	.23	.35	.49	.61	.77	.92
26 to 35 "	.23	.35	.56	.80	1.03	1.31	1.68
36 to 50 "	.33	.53	.87	1.28	1.66	2.12	2.57
51 to 75 "	.35	.57	.94	1.39	1.80	2.30	2.79
76 to 100 "	.40	.67	1.12	1.65	2.15	2.75	3.34

On all orders of 100 plants or more of Cane Stock items listed above, the rate is cheaper by Express after the third zone.

### THE ABOVE PARCEL POST PRICES INSURE ALL SHIPMENTS

FRUIT TREE SHIPMENTS. Owing to height and size of our Fruit Trees, we advise Express or Freight shipments. Any orders to be sent Parcel Post, will have to be cut back to meet postal regulations.

FER 11 1935

Two  
of the  
**Wonders**  
of the  
**Strawberry**  
**World**

*Approved*

by  
**TOWNSEND**



**Chesapeake**  
(Above)

A late berry  
recommended for  
the northern states.  
See page 13.

(Howard 17)  
**PREMIER**  
(Left)

Ripens early over a long season.  
Yields heavily—commands top  
market prices. See page 6.

**E. W. TOWNSEND & SONS**

Salisbury, Maryland