













# WALLACE NUTTING PICTURES



## EXPANSIBLE CATALOG

Being Studies in America and other  
Lands of Aspects in the Life of the  
Fathers and the Country Life of  
to-day. The pictures are made on  
platinum paper and are colored by  
hand. This book is merely a key of  
the subjects.



Published by  
WALLACE NUTTING, INCORPORATED  
FRAMINGHAM, MASSACHUSETTS

TR 199  
28

11

135 247

THE UNIVERSITY PRESS  
CAMBRIDGE, MASS.

©CLA39741.1  
APR -5 1915



## TABLE OF CONTENTS

	PAGE
ABBEYS . . . . .	351
BEST SELLERS . . . . .	7
BIRCHES (Including Streams and Roads with Birches) . . . . .	11
BLOSSOMS. (See also Cottages and Figures) . . . . .	101
BRIDGES . . . . .	201
CALENDARS . . . . .	901
CANALS. (See also Bridges) . . . . .	251
CARDS . . . . .	951
CASTLES, CHATEAUX, AND SIMILAR SUBJECTS. . . . .	301
CATHEDRALS, CHURCHES, ABBEYS . . . . .	351
CHURCHES . . . . .	351
COLONIALS . . . . .	451
COTTAGES. (All domestic exteriors without figures) . . . . .	401
EXPLANATION OF SIZES AND LETTERS . . . . .	5
FIGURES. (Colonials and Gardens with figures) . . . . .	451
FOLDERS . . . . .	951
FOREIGN subjects are scattered under various classifications	
FRAMES. . . . .	975
GARDENS. (See Figures and Cottages.)	
MARINES . . . . .	601
MOUNTAINS . . . . .	651
PASTORALS (Sheep, cattle, etc.) . . . . .	701
ROADS (Without Birches, Blossoms, or Cottages) . . . . .	751
SHEEP . . . . .	701
SMALL GOODS, SPECIALTIES . . . . .	901
STREAMS (Without Birches, Blossoms, or Bridges) . . . . .	801

## SUBJECTS BY NUMBER

From 1-3999 and above 8000, America (except very few old foreign).

4000-4499 Italy (except even numbers to 4022).

4500-4999 France and Germany.

5000-5499 Holland.

5500-8000 Great Britain.

## AN EXPANSIBLE CATALOG

**I**N order to keep our friends advised of our recent work, we are putting forth this expansible catalog, so paged that at the end of each division, Birches, Blossoms, etc., supplements may be inserted from time to time, as they are sent to the holder of this catalog. The reader will kindly take care to make these insertions at once on receiving the additions, as this is the only manner in which this catalog can be at all correct or up to date. The issuance of these books is so expensive that we cannot afford to give out additional catalogs, and it must, therefore, remain with the holder to keep all the parts together.

We believe that this is the richest setting forth of pictures which has ever been undertaken. We were told when the last list was issued that it was the best of its sort that was ever published. This book contains more than double the previous quantity of illustrations. It is not the intention, at any time, to issue any other book, but only to increase this one.

This book, unless it is sold, remains the property of the publishers, being loaned. The holders are not, of course, at liberty to cut out portions of it.

We have not retained quite all the old cuts, but most of them will be found in the following pages, some being inserted only for the sake of completeness. The entire collection of Wallace Nutting pictures consists of many thousands, not all of which can be here shown, but only a representative number.

Probably a small list, without cuts, may be issued of subjects purely architectural.

It is obvious that an index is impossible, as it would be useless after the issuance of the first supplement.

## EXPLANATION

The letters before the numbers refer to the sizes of the pictures, not to the size of the mounts. Before every number appears a letter, as C 220. This means the picture 220 is sold in the C, or 8 x 10 size, on a mount 14 x 17. In order to be sure to get just what you wish, it is necessary that the letter should be placed before the number, as perhaps the same number may be issued in ten different sizes. The C size will be sent unless otherwise ordered.

The pictures are sold *only* in the sizes listed. As a rule they are not suitable to be reproduced in other sizes. If you don't trust our taste in this respect, and insist on ordering in other sizes please include one-third extra for cost of plate. We do not guarantee satisfaction in such cases.

A means	5	x	7	Plate,	11	x	14	Mount,	List	\$1.25
Q	4	x	10		11	x	17			1.50
S	6	x	10		13	x	17			2.00
C	8	x	10		14	x	17			2.50
O	5	x	14		13	x	22			2.50
P	7½	x	14		15	x	22			4.00
E	11	x	14		18	x	22			5.00
F	14	x	17		22	x	28			6.50
T	12	x	20		22	x	30			7.00
G	16	x	20		26	x	30			8.00
H	20	x	24		29	x	36			12.00
J	20	x	28 or 30		29	x	40			15.00
W	20	x	40		30	x	52			20.00

The following sizes are signed but not titled:

R means	4	x	6	Plate,	10	x	12	Mount,	List	\$12.00 per doz.
K	3	x	6 <sup>5</sup> / <sub>8</sub>		8	x	12			9.00 “
D	3¼	x	4		7	x	9			6.00 “
D	2½	x	5		7	x	9			6.00 “
B	2	x	3		5	x	7			3.00 “

There are several hundred subjects under each of these small sizes. Orders in any size can be made up to consist, if desired, of figures only, or of blossoms, streams, birches or cottages. We do not show cuts of any size smaller than A.

## BEST SELLERS

### Seven Assorted, either as A set, C set, or E set

	PAGE
2530 THE COMING OUT OF ROSA (Figure and Blossom. Also in F) . . . . .	467
6063 LARKSPUR (Figure and Blossom) . . . . .	451
73 DECKED AS A BRIDE (Blossom. Also in S, O, P, G, H, J). . . . .	109
220 THE SWIMMING POOL (Stream. Also in Q, S, O, P, F, G, T, H, J, W). . . . .	810
3284 A CHAIR FOR JOHN (Figure) . . . . .	462
4010 A FRUIT LUNCHEON (Figure). . . . .	453
5605 THE NEST (Cottage and Blossom). . . . .	401

### Second Seven Assorted, either as A set, C set, or E set

292 GRACE (Birch. Also in Q and F) . . . . .	16
506 A CANOPIED ROAD (Blossom. Also in Q, F, J) . . . . .	111
170 HONEYMOON DRIVE (Blossom. Also in F, G, H) . . . . .	110
437 PINE LANDING (Water. Also in Q) . . . . .	818
6414 HOLLYHOCK COTTAGE (Cottage and Blossom) . . . . .	404
4002 A STITCH IN TIME (Figure) . . . . .	461
3082 THREE CHUMS (Figure. Also in F) . . . . .	453

### Seven Assorted, either as Q set or O set

3701 A LITTLE RIVER (Also in P, G, T and W) . . . . .	806
5093 A PEACEFUL STRETCH (Holland Canal) . . . . .	253
158 FLOWERING TIME (Also S, P, T, W) . . . . .	112
3265 THE WALPOLE ROAD (Blossom). . . . .	105
5663 FIVE O'CLOCK (English Cottage) . . . . .	103
750 THE BOOK SETTLE (Figure. Also in S and P) . . . . .	469
3734 A NEWMARKET BELLE (Figure. Also in S) . . . . .	459

### Second Seven Assorted either as Q set or O set

3147 A SHELTERED ROAD (Birch) . . . . .	11
221 WHITSUNDAY (Blossom) . . . . .	113
57 THE BEAUTY OF THE UPLANDS (Blossom. Also in P) . . . . .	116
704 CONFIDENCES (Figure. Also in C, E, F) . . . . .	468
3072 THE OLD HOME (Figure. Also in S and P). . . . .	461
6134 THE TRANQUIL VALE (Stream. Also in P) . . . . .	653
3497 A BARRE BROOK (Also in C, E, P, T, W). . . . .	804

### Seven Assorted as S set or P set

247 A BERKSHIRE BROOK (Also in Q and C) . . . . .	114
3247 A KEENE ROAD (Blossom). . . . .	108
52 CHRISTMAS JELLY (Figure. Also in C). . . . .	480
3670 IN JOHN HANCOCK'S CHAIR (Figure) . . . . .	483
323 A WARM SPRING DAY (Pastoral. Also in Q, C, O, E, W). . . . .	701
985 A FLECK OF SUNSHINE (Figure. Also in T) . . . . .	487
268 SLACK WATER (Stream. Also in Q, O, T, W) . . . . .	808

## BEST SELLERS

### Seven Blossoms in C set, or E set (not included in any of above sets).

		PAGE
244	Where Grandma Was Wed (Also in P and J) . . . . .	108
3623	The Softness of Spring . . . . .	101
3107	Windsor Blossoms . . . . .	101
3301	Rural Sweetness . . . . .	105
27	Billows of Blossom (Also in G) . . . . .	102
34	Spring in the Berkshires . . . . .	114
112	A Tunnel of Bloom (Also in J) . . . . .	116

### Seven Figures (Colonials), in C set or E set (not included in any of above sets).

3304	The Treasure Bag (Also in A and G) . . . . .	454
703	Afternoon Tea (Also in G) . . . . .	471
734	The Maple Sugar Cupboard (Also in G) . . . . .	474
707	Prudence Drawing Tea . . . . .	465
4008	A Virginia Reel . . . . .	461
3744	A Formal Call . . . . .	464
3280	An Old Colony Home Room . . . . .	463

### Second Seven Figures (Colonial), in C set or E set (not included in any of above sets).

3728	Braiding a Rag Rug . . . . .	473
136	At the Fender (Also in A) . . . . .	467
746	An Elaborate Dinner (Also in Q, F, P, J) . . . . .	481
3288	The Divining Cup . . . . .	458
677	Mending (Also in G) . . . . .	471
3796	Trimming the Pie Crust . . . . .	459
1389	The Spinnet Corner (Also in A) . . . . .	478

### Seven Assorted Foreign, either as A set or C set.

5561	Mary's Little Lamb (England, Kent) . . . . .	704
5010	Windings in Holland (Cottages and Canal) . . . . .	254
480	The Pergola, Amalfi (Also in E and F) . . . . .	606
5606	Hawthornden (Cottage in Sherwood Forest), (Also in E and G). . . . .	403
5662	Under Ivy Bridge (Devon), (Also in E) . . . . .	201
4065	Little Washerwomen (Amalfi). . . . .	458
4463	Spring's First Green (Mountain, No. Italy), (Also in E and G) . . . . .	654

### Seven Cathedrals, as A set or C set or E set.

6222	The Conscious Stones (Bolton Abbey) . . . . .	352
5701	Wells, from the Bishop's Garden . . . . .	353
6125	Stepping Stones, Bolton Abbey (Also in T) . . . . .	351
4344	Venice's Chief Glory (St. Mark's) . . . . .	356
5550	Canterbury Close (long vertically) . . . . .	355
5853	Durham . . . . .	358
4276	The Italian Spring (Seven-Domed Church, Padua) . . . . .	358

*As popularity varies a new sheet will be sent to substitute for pages 6 and 7.*

## HOW TO ORDER PICTURES

**No Pictures on Commission.** We do not send out pictures on commission sale, because we have always been able to sell all the pictures we could make and make well.

**No Pictures Returnable.** No pictures are sold with the direct, indirect, or implied obligation to receive them back if not sold. No salesman in our employ has any right to give any such assurance.

**Making up Orders.** Those dealers who are acquainted with our pictures can easily find by referring to the classification on page 3 the class of subjects for which they are looking. One warning should be given. A great many cuts appear in the squarer shapes, like the C and E size, which are also made in narrower panels, so that if a buyer is looking for panels it is wise for him to give heed to the notations under all the pictures in a certain class, to see whether or not they may be issued in the panel size.

**Express, Freight or Mail.** Unless particular instructions are sent with the order we shall forward goods by the cheapest way.

**Packing.** All packing is done gratis, except in case of less number of framed pictures than regularly sold, or less than seven A size or larger, when a charge of twenty-five cents is made for packing.

**Claims for Injury.** The forwarders are in all cases liable for injury to goods in transit.

**Remounting.** We remount pictures for the nominal charge of fifty cents per dozen in assorted sizes. The expense to us is considerably more than this; but it is for our interest that the pictures be kept in good condition, and we wish to stand behind the buyer in this particular.

It is, however, essential, if the buyer dismounts his pictures to return to us, that he cut out and send to us the signatures. We are obliged to make this rule as instances have not been unknown of mounting other pictures than our own above our signature. We would advise that pictures sent to us for remounting should not be dismounted, but should be cut down nearly to the size of the print.

**A Variety of Specialties.** We have an immense variety, some five or six hundred styles, of special goods, some, in the form of plain engraving, being invitation cards, etc., and others are special styles of menus, banquet cards, place cards, etc. Above are not illustrated.

**New Small Goods.** We are constantly adding to the range of our numbers in the small goods. We make at least one new subject a day of this character.



A Marlboro Shore

Q and C 3459



Cross Road Shadows

C 3515



A Sheltered Road Q and O 3147



Early May Q, S and P 3067



Up the Hill Q and S 3025

We have been accused of overcoloring the birch trunks. It is hard to believe that the birch is so white. We do not color the trunks at all, except where the outside bark is missing. At first the exposed bark is red brown, but turns dark gray to black.



Birch Drapery

C 3611



Southboro Birches

C, E 3071



The Bridesmaids of the Wood

E 61



Morning Among the Birches

C or E 328



A Waterford Curve Q or C 361



A Birch Paradise Q or C 322



By a Berkshire Pool C 291





Birches in Autumn Q 3662



The Shore Vista Q 579



Early Foliage Q 3145



Birch Clusters P 2701



Roadside Grace A 239



A Birch Wood A 277



Spring at the Lake

C and F 3461



A New Hampshire Drive

C, E 3575



A Fence Row

C 2626



Lookout Point

P, E 367



Birch Curve

C 439



The Climax of the Road

E 88



Birch Strand

Q or C 296



Silver Birches

Q or C 278



The Birch Bank

Q 443

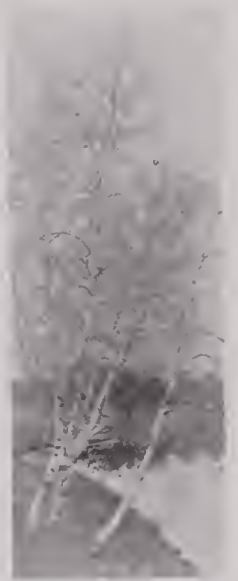


Birch Cove  
O, P or E 104



An Elm-Birch Arch

O, P or E 355



The Lake Marge  
O 345



Under Birch Shadows

C 289



Among the Ferns

C 351



A May Drive

Q, C or F 285



June Haze  
Q 411



A Birch Grove

A, C, E or J 370



A Roadside Brook  
Q 163



Grace

A, Q, C, E or F 292



Westmore Drive

A, Q, C, O or E 365



A Silver Screen  
Q 350



Birch Bend

C, E, F 18



At the Hilltop  
Q 2655

The following are not illustrated:

P 368 Birch Lookout  
C 546 A Lincoln Drive  
A 1727 Up the Path  
A C 1830 The Birch Border  
O P 2706 The Curve of a Hill Road  
C 3001 Autumnal Birches  
S 3005 A Thanksgiving Landscape  
A 3063 A Downward Curve  
C 3151 A Mountain Shore

C 3155 Birch Knoll  
A 3163 A Passumpsic Gorge  
A 3181 The May Awakening  
S P E 3311 Early Birches  
C 3501 A Brandon Roadside  
A 3557 Lichen and Birch  
C 3571 White Mountain Birches  
C 3667 White Mountain Birch Road



A White Rail  
C 301



A Berkshire Path  
S 264



Woodland Enchantment  
C 559



Birch Hilltop

A, Q, C, O, P, E or H 382

Wallace Nutting



A Woodland Cathedral C, E 14



Birch Mountain Road P or E 380



A Silent Shore Q, C, P or E 249



The Light Side of the Road C 238



Lake Bank Birches C 1445



New Hampshire Birches A 371



The Softness of Spring

C, E 3623



Windsor Blossoms

C, E 3107



Springfield Blossoms

C 3105



Meadow Beauty

A, C and E 5653



Nuttinghame Blossoms

C 85



An Orchard in the Hills  
S 148



A Dell of Blossoms

C 497



Brook and Blossom

Q and C 3617



Catskill Blooms

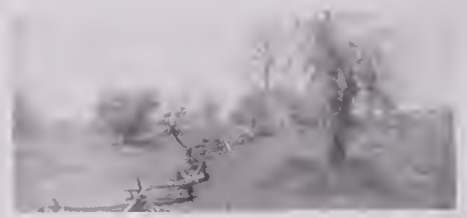
C 3249



A New Hampshire Road Q or C 659



The Cottage Path  
A 465



We are Young!

Q 189



Billows of Blossom

C, E and G 27





Five o'Clock

O, P 5663

Wallace Nutting



Old Framlingham

A, C 5648



At Grandmother's

A, C 4852



Blossom, Stream and Tower

A, C 5784

## BLOSSOMS

The eternal appropriateness of a blossom picture as a gift results in very great popularity for this class of subjects. They are all good for weddings. Some of them are especially titled for that purpose. Strange to say, blossoms sell at Christmas as well as at any time of the year. People wish to import the spring into the winter. For the sick, or for any place whatever in the home, even the dining-room, they find their place, and next to the figure subjects they are the most popular class of our pictures.



Blossoms by the Lake

S, C 3235



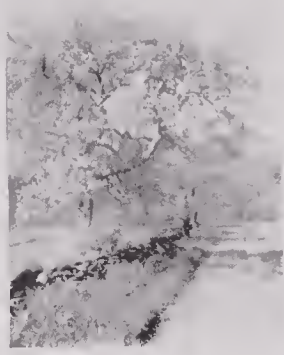
Apple Blossom by the Wall

C and E 8021



Blossom Point

C 110



Queen of May

E 38



The Sweets of Spring

C 612



Blossom Landing  
A, Q or C 436



Along the Wall A 1447



New Life A 409



Heifers by the Stream

Q 358



The Heart of New England

O 248



A Bridal Procession

O 2679



Rural Sweetness

C and E 3301



On Worcester Hills

C 3429



The Pride of the Lane

C or E 177



Down the Hill to School

C 334



Petals in the Path

E or P 137



Through the Orchard Road

E 109



The Walpole Road

Q and O 3265



Blossom Bordered

C, E or J 58

Wallace Nutting



Vermont Blossoms

C 3101



Fair May

A 3179



A Roadside Apple Tree

E 94



The Hawthorn Dell

A, C 5627



Thatched Dormers

A, S, C 4826

While the apple blossom seems the favorite, we have lately learned that the English hawthorn, either white or pink, as it ornaments the hedge-row in May, is a close rival. On this page at the top appears a group of wild hawthorns blooming along a path. The second picture is a charming bit in Normandy, showing the long thatched dormers running to the peak of the roof. The bottom picture is a sweet and restful scene near Dort.

On the next page, "Orta in Blossom Time" is a view across one of the smaller Italian lakes, and is proving very attractive. Of course, "Honeymoon Drive" still remains a favorite. Probably two-thirds of all the blossoms shown are in attractive request almost every day.

The handsomest of the very large blossoms is the forty-inch picture "Flowering Time," although "The Beauty of the Uplands" is a rival.



Dykeside Blossoms

A, Q 5083

Wallace Nutting



Orta in Blossom Time

A and S 4460



A Keene Road

S and P 3247



A Berkshire Cross Road

C 331

Wallace Nutting



The Old Homestead

C or E 1130



Where Grandma was Wed

C or E 244



Decked as a Bride

C, E or J 73

Wallace Nutting



Blossoms that Meet

A or C 895



New England Uplands

Q or C 332



Housatonic Blossoms

Q 980



A Bee's Paradise

Q 458



Across the Farm

O 2624



Above the Orchard

Q 149



Honeymoon Drive

A, C, E, F, G or H 170

Wallace Nutting



Nearing the Crest

Q or S 432



An English May

Q 2694

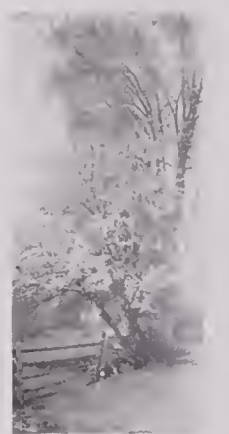


Wistaria Gables  
Q 2161



A Tunnel of Bloom C, E or J 112

Wallace Nutting



May by the Wayside  
Q 489





A Canopied Road

A. C. E, F or J 506

Wallace Nutting



Spring Fashions

Q, S, or C 270



Over the Treetops

C 879



Bowered Barway

C 470



The Wealth of May

C 2601



America Superba

P 155



Flowering Time

S, P or W 158



Bloom and Shadow

C 487



Lined with Petals

C 597



Blossom Drive

Q or C 649



A May Countryside

S and P 647



A Stamford Roadside

A, C 3231



A Valley in the Pyrenees

A, C 4591



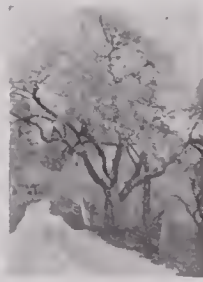
Happy Valley Road

Q or C 205

Wallace Nutting



An Old Back Door  
A 491



Height of Spring  
A 445



A Fragrant Highway  
A 459



Blossom Cottage  
A 2657



Petals Above and Below  
A 164



On Either Hand  
A 2663



The Shadow of the Blossoms  
C 165



Over the Road  
C 427



Blossom Valley

Q 131



A Meadow Pasture  
A 347



Whitsunday

Q 221



At the Barway

E 33



Spring in the Berkshires

E 34



Curve, Shadow and Bloom

E 64



The Way of the Blessed

E 105



A Berkshire Bend

P 87



A Berkshire Brook

Q, C or P 247



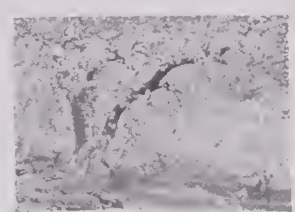
The Orchard Bend  
A 457



The Cross Roads in May  
A 78



A Pink Bower  
A 461



The Heart of the Orchard  
A 456

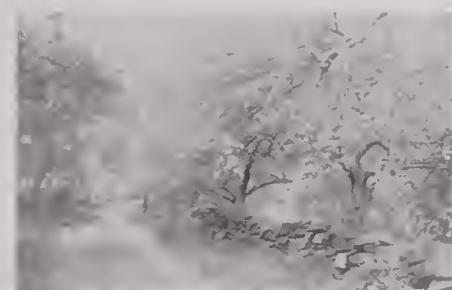
## EDUCATION



From the Foot of the Hill  
S 428



A Maple-Apple Arch  
S 972



Disappearing in Blossoms  
S 1111



A Double Border  
S 1110

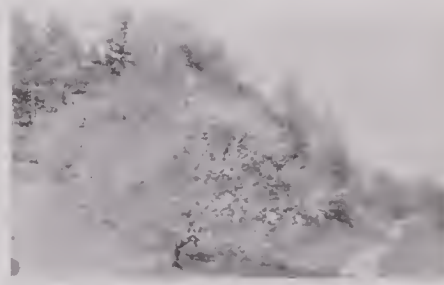


The Ancestral Cottage  
S 817

Taste in pictures develops slowly in most minds. At first the gaudy, the elaborately ornate, at last the delicate touches win. We make these pictures partly to satisfy our own feeling, and partly in the effort to lead the public taste. These colors are in some cases a trifle overdone, and in other cases are what we consider just right. Any blossom whether made by God or man will, if left long in the sun, tone down a little. If you ask, why so many roads, we reply that all pictures derive enhanced attraction from a human relation. There is more sentiment and charm in combining a path or a road with a blossom than in giving either alone. We are prepared to supply so many different styles that the taste of the customer is sure to be satisfied. Please do not order pictures in any other sizes than those listed. If the subjects were appropriate for greater enlargement they would be so listed. Satisfaction will not be guaranteed on orders of enlargements and we shall be obliged to charge for the plate.



A Memory of Childhood  
A or C 160



"Over the Hills and Far Away."  
S 724



Over the Crest  
Q, S or C 639



The Turn by the Bars  
S 928



Where Bees are Humming  
S 414



Berkshire Curves

S or P 169



The Beauty of the Uplands

S, P, W 57



Highland Blossoms

S, P, W 49



Mellow May

A, S 4841



Sussex Blossoms

A, S 5787



A Peep at the Hills

C 476



The Guardian Angel  
Q 1041



By the Stone Wall

C 835



Under Ivy Bridge

A, C, E, F 5656

Wallace Nutting



Bridge of Three Arches

A, Q, S 4245

Wallace Nutting



Lorna Doone

A, C, E 5657



Burns's Brig o' Doon

A, C 5947



A Rural Path

Q 6241



Old Venice

Q 4299



Bridge of Sighs

Q 4235



Far From Broadway

A, C 6287



St. David's Bridge

A, S 6047





Dream Arches

A, C, E 4564



Among Saffron Sails

A, C 4314



Water Paths of Venice

A, Q, S, C, O, P 4253



A Canal in Sunshine

A, C 4325



A Golden River

A, C, E 6120

Wallace Nutting



The Old Bridge and the New

A, C 6226



The Vale of Derwent

A, C, 6128



Late Twilight

A. C 6089



Devon Arches

A. C 5692



The Forgotten Bridge

Q, S 5938



Below the Arches

A. C, E 5662

Wallace Nutting



Arches and Domes (Verona)

Q, S 4392

Wallace Nutting



Oak Glen

A, C 6422



Lichen and Foam

A, C 6232

## BRIDGES



Across and Beyond

A, S, P 4616



The Pebbly Strand

A, S, C 5691



Bridge Drapery

A, C 6420



A Leisurely River

A, Q 6440



Where the Stream Rests

A, C 5693



A Bridge in Spain

A, C 4615



The Old Meadow Arches

A, S 5936



Lecco's Bridge

A 4379



Entering the Old Bridge

C 663



The Church and the Bridge

A, C 5551

American bridges, unhappily being built of wood, are not, as a rule, very attractive. "Entering the Old Bridge" above is an agreeable exception. There is also "A Woodstock Arch" (C 151), and "The Upper Winooski" on page 803.

In England and on the Continent the bridges, being almost altogether of stone and often ivy covered, are particularly fine, and we have a list of about 300 such pictures. Those illustrated are a representative selection and include subjects made in seven foreign countries. "Dream Arches," on page 203, is the famous Roman Aqueduct near Nîmes. We have this picture in horizontal form, also a diagonal view up to E and F sizes. It will be noticed that the upper left and bottom right pictures on page 207 are Spanish. "Oak Glen" is a Roman bridge in Wales. "A Golden River" cannot fail to please.



The Mills at the Turn

A, S, E, F 5061



Strolling on the Quay

A, C 4326



Sailing Among Windmills

A, Q, S, O, P 5086



The Canal Road

A, S 5100



A Listless Day

A, S, C 5016



A Canal Dock

A and C 5026



La Gindecca

A, C 4298



A Water Garden in Venice

4333



A Dutch Bridge

S 5094



Dutch Sails

Q, S 5082



The Cheese Market A, S 5058



The Sleeping Canal Q 4299



In Worden

Q 5092





A Peaceful Stretch

Q. O 5093

Wallace Nutting



The Canal Row

Q 5062

Wallace Nutting

## CANALS

Please notice that a considerable number of pictures which would otherwise come under this classification are in the class of Bridges (page 201); that is to say, if canals have bridges we have for the most part placed the cuts with Bridges. There is a considerable similarity in the large number of other canal pictures which we have. The famous cheese market at Alkmaar (page 252) is one of the daintiest architectural bits in Holland.



A Gondolier Dock

A, C 4302



Windings in Holland

A, C 5010



A Path to Content

A, S, C 6243

Wallace Nutting



With the Wind

A, Q 5024



Old Moat of Raglan

A, C, E 6452

Wallace Nutting

As a Vertical Picture the number is 6451 and is entitled A Castle Moat



Rheinstein

A, C 4892



A Castle Outwork

A, C 6441



A Baron's Hold

A, S 5992



Entrance, Carew Castle

A, S 6391



Ruins of Rievaulx

A, S 5902



By Castle Towers

A, S, C 5996



A Welsh Stronghold

A, S 6394



The Aude Gate

A, C 4505



An Oriol (Quimper)

A, S, C 4763



The Donjon, Chenanceau

A. C. E 4651



A Scottish Stronghold

A, S 6223



Conway Towers and Stream

A. S 6365



Chambord and Its Bridge

Q or S 4733

Wallace Nutting



Warwick Castle

A, Q, S 6275

Wallace Nutting



Carcassonne

Q 4508



Beneath Castle Walls

Q 5991



An Old Castle Stair

Q 5833

## CASTLES

We have besides the castles shown, a considerable number of others, such as Tantallon Hold (page 603), included with some others under Marines, and Dover Castle (no illustration). There are also Hardwick Hall, the chateaux of Loches and of Pau and various other French and British strongholds.

### CASTELLATED CARCASSONNE

We have about fifty prints of Carcassonne. The one showing the whole town from the plain is attractive. There are also others that show sections of the castle wall, of the keep, of the streets, and of the noble church, and the remains of the old theatre. This is so special a subject that we have illustrated only one of these, but would be glad to furnish information on request.



Stepping Stones at Bolton Abbey

C, E, T 6125

Wallace Nutting

The picture above shows one of the most remarkable series of stepping stones in Britain. There is another series near Bridgend in Wales (page 461) and elsewhere. The combination of the stepping stones with the abbey above makes a very beautiful subject for a library or parlor wall. It will be noted that it is published in the larger sizes. Besides the illustrations we have pictures of Exeter, of Tintern Abbey (this not recommended, because being repaired), of Vendome, of Quimper, of Notre Dame, of Strasburg, and others in Italy, France and Britain. We also have some fine old American churches of the Georgian type, both interiors and exteriors.

The pictures shown are only samples of the wealth of material secured by Mr. Nutting during his recent trip abroad, when he took over two thousand pictures. He has, for example, some forty or fifty pictures of Canterbury, some fifteen or twenty of Salisbury, and the same number of Milan.



Temple of Zeus, Athens  
C, E or G 36

The Milan pictures give fine bits of the exquisite detail of that famous structure. Note, for example, on page 356, the statue on the lofty tower. It is one of hundreds, and is said to be that of Christ blessing the city. On page 357 is shown another charming segment of the great cathedral.



The Cloister Door (Canterbury)

A. C 5795



An Italian Dream

A, C, E 4218



The Conscious Stones

A, C, E 6222 (also A, C and E 6219 Vertical)





Wells, from the Palace Pool

A, C, E 5700



Gloucester Cloister

A, C 6282



Santa Barbara  
Towers  
Q or C 2217



The Baptistry at Canterbury

A, C 5776



A Mission Corner  
Q 2149



An Abbey Moat

A, C 6053



Scott's Tomb, Dryburgh

A, S 5885



Canterbury Arches

A, C 5549



Within the Close

A, C 5699



Salisbury Façade

A, C 5745



Old Venice

A, S, C 4249



Main Door, St. Mark's

A, C, E, G 4255



Cloister Seats, Canterbury

A, C 5554



Canterbury Close

A, C, E 5550



At Canterbury Gate

A, C, E 5545



A Detail of St. Mark's

A, C, E 4318



Porta Della Carta

A, C, E, G 4346



Through Milan's Spires

A, C, E, 4375



Venice's Chief Glory

A, C, E 4344



The Church by the Stream

A, C 5576



Salisbury

A and C 5710



A Cathedral Close, Rouen

C 4823



A Part of Milan's Towers

A, C, E 4381



The North of Canterbury

A, C 5778



The Abbey Road

A, S 6447



Old Glastonbury

A, C 6344



Durham

A, C 5853



The Italian Spring

A, C, E 4276



Wells, Bishop's Garden

A, C, E, F 5701



Bolton

A, C, E, F, T 6216

Wallace Nutting



St. David's Palace

A, S, P 5981



Summer on the Avon

A, S, P 5708



The Ruins of San Diego Mission C 2203



San Diego from the Highway C 2208



Churchyard, San Luis Rey C 2204



Old Italy E 31



The Mission Road C 2218



On the Avon A, C 5707



Litchfield Minster A, C, E 5845



A Corner of Capistrano C 2192



The Poetry of the Mission C 2198





Ivy and Rose Cloisters

C, E, F or J 2197



The Abbey by the Stream

Q, O 6028

Neath Abbey, shown just above, is in South Wales and, with the bridge in conjunction, it affords a charming horizontal panel, but no one should buy it who does not love abbey ruins. "Summer on the Avon" (page 359) is not made at Stratford, which does not now, with its lofty trees, make a satisfactory picture. The print on page 359 is of Salisbury, of which there is another one long vertically, and various detailed views. "Litchfield Minster" (page 360) has some fine pink hawthorn blossoms just beyond the water. The rich brown tones of the spires give this subject a peculiar distinction. On page 358 "The Abbey Road" shows the Vale Crucis. "The Italian Spring" on the same page is the famous seven-domed church of Padua. "Durham Towers," shown on the same page, has a sky of a soft reddish brown and is a rich afternoon theme.

None of the Nutting negatives are ever sold, though frequent requests have come from competitors for the sale of such as we no longer use; but following the law that "The good is the enemy of the best," we constantly consign to the scrap heap subjects which have proved salable, but have been superseded by others a little better.



San Gabriel Mission  
A 126

The line is thus being constantly enriched, not only by additions, but by critical selection and substitution. We are never content with past successes. Among the most widely popular are subjects added only within the last few months.



The Approach

Q, S, C, P or E 2195

Wallace Nutting

## MISSIONS

Mr. Nutting has made practically all the Californian Missions. It has always been his opinion that they are overrated architecturally. Nevertheless, that shown immediately above, especially in the panel size, is very attractive. "Ivy and Rose Cloisters" (page 361) appears in large sizes. It is especially satisfactory in the E and F sizes. We have a half-dozen aspects of San Gabriel and Santa Barbara.

If it is desired to obtain any of these ecclesiastical themes without color, they will be supplied in sepia, but long notice is required, as we use very little sepia.

Mr. Nutting is in process now of making additions to his old American churches; but the demand for them is more largely from architectural students. Mr. Nutting will make to order any American church within reasonable distance of his home, if given a little time, as he tours a great deal. He will also make arrangements to photograph private estates, if desired.



A House Lane

A, S 5823



A Waterside Cottage

A, C 4720



The Nest

A, C, E 5605

Wallace Nutting



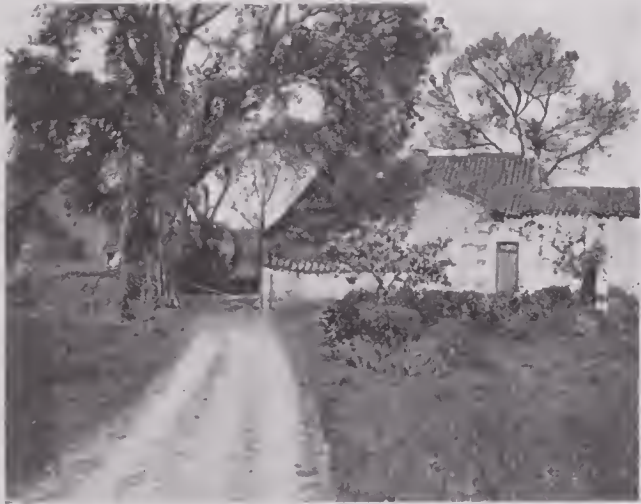
The Parsonage Drive

A. S 5624



Patti's Favorite Walk

A, C 6230



The Farmstead Entrance (France)

A, C 4654



Isaac Walton Brook

A, C 5804



The Quiet Life

A, S, P 5703



Half Hidden

A, S 4848



A Peaceful Village

A, Q 4833



Where Grandma was Born

A, C, E 6119



The Vicarage

A, S 5704



Gate with Urns

C 986



Langdon Door

C 572



A Georgian Door

S or C 989



Hawthornden

A, C, E, F 5606

Wallace Nutting



The Little Street

A, C 6059



Home

A, S 6220



The Protecting Home Tree  
C and E 1517

Wallace Nutting



Hollyhock Cottage

A, C, E 6414



A Newbury Door S, C 991



The Lure of Home Q 6410



Benedict Door C 571



Two Centuries

A. C 1820



Home Charm

A and C 1427

Wallace Nutting



Up from the Dell

A. C. E 6117



Afternoon in the Lane

A. C 6057



Thanksgiving

A 60

405



Mauvezin's Village Street

A, C 4534



Old Fashioned Paradise

C, P 1843



The Cottage in the Lane A or C 1127



A Connecticut Homestead A or C 346



An Old Fashioned Village

E 55



The Old Stage Road

E 120



The Wayside Inn Approach Wallace Nutting  
A and C 592



The Wayside's Colonial Dignity Wallace Nutting  
A, C and E 648





Larkspur

A. C and E 6063

Wallace Nutting

The above will not make a larger picture



Warming the Porridge

C 3522



Watchful Waiting

C3482



The New Parasol

C, E 3650

Wallace Nutting

The room above is very old, and so is all the furniture. "Everything antique but the girls." Mr. Nutting now makes no "Colonial" subjects without insisting that the furniture be absolutely appropriate.



Three Chums

A, C, E, F 3082



Winding the Old Tall Clock

C, P and E 3302



All Smiles

C 3004



Her Old Trundle Bed

C 3126



A Fruit Luncheon

A, C and E 4010



Recreations of our Foremothers

C and E 3150



A Discovery

A. C. E 3298



The Treasure Bag

A. C. E. G 3304



Rag Rug Weaving  
(Recreations of our Foremothers, C. E 3150, similar)

C 3152



Afternoon Recreation

C 3292



Ancient Treasures

A. C 3320



A Family Heirloom

C 3030



Fair Weather To-day Q 3118



Out of the Garden Q 3106



His First Letter Q 3092



L'Allegrò Q and O 3164



Cupboard China Q and S 3244



The Tea Table A, Q and C 3314



His Rose Q, S, C, P 3016



The Old Settle Q 3088



At the Low Boy Q and C 3306



Passing the Portal

C 3102



A Windsor Maid

Q and C 4006



Baking Day

A, C, E 3704



At Paul Revere's

C 3586

The vacant chair "At Paul Revere's" was the property of the original Paul Revere. The gown in this picture colors very daintily. The house in which "Making a Rug" was taken is of the 1810 period.



Making a Rug

C and E 3716

Wallace Nutting



A Divining Cup

A. C. E 3288



Little Washerwomen, Amalfi

A. C 4065



Dutch Maids

A, C 5006



The Expected Letter

A, S, C 6064



A Double Drawing Room

Q. S 4014



A Yard of Dutchmen

Q 5071





Trimming the Pie Crust

A. C and E 3696

Wallace Nutting

For long Mr. Nutting has planned a pie-making picture, only waiting to find a worthy interior. Note the ribbon of dough that is being trimmed from the crust. This house was built in 1658. Note the coped effect above the fireplace. This holds up the hearth on the floor above.



A Newmarket Belle

Q. S. O. P. E 3734

Wallace Nutting

The name is given because a racing scene appears above on the wall paper. The empire sofa shows an early Victorian room, with the other older furniture retained.



Creature Comforts

C. E 3668

Wallace Nutting



The Rose in Bloom

A, C 6455



A Knickerbocker Fireplace

C 3226



A Cool Spot for Work

A, C 5089



A Classical Maid

Q and S and P 3138



A Virginia Reel

C, E 4008



A Stitch in Time

A, C, E 4002

(A Delicate Stitch, similar, is A, C, E 1506)



The Old Home

Q, S, O and P 3072



Breakfast Time

A, S 6385



Sunday Afternoon in the Old Home

C 1816



Rose Standish  
(Doorway Welcome, C 3516, similar)

C 3518



A Chair for John

A. Q. S. C. O. P. E 3284

Wallace Nutting



A Colonial Kitchen C. E. G 3282  
(An Old Colony Home Room, C 3280, similar)



The Daguerreotype C 3002



The Charms of Home C and E 3068



An Old Colony Parlor C and E 3290



The Home Room C or E 745



The Formal Call

C. E 3744

Wallace Nutting



A Colonial Belle

Q 3736

Wallace Nutting



The Long One or the Short One? S C 3470



Sunshine and Music Q, S, C 1340



All Smiles Q 3692



Ancient Stepping Stones Q, O 6108



Rose Standish Q 3694



Prudence Drawing Tea C or E 707



A Pilgrim Daughter A, C, E or G 988



All in a Garden Fair

C. S. P. E 3108



Grandfather's Clock

Q, C 3602



The Settle Nook

A and C 1511

Wallace Nutting

The Settleback is 242 years old





The Coming Out of Rosa

A, C, E or F 2530

Wallace Nutting



In Grandpa's Day S 212



Easter Morning S 2188



Waiting for Jacob  
Q or S 444



At the Fender

C or E 136



A Patchwork Siesta

C or E 2293



The Connoisseur  
Q 841



The Chimney Corner

C 500



The Corner Cupboard  
Q or P 873



Confidences

Q, C, E or F 704



The Admiral's Door

E 394



Wine Carrier, Ravello

Q 4048



A Nuttinghame Nook

Q, C or E 748



The Book Settle      Q, O or P 750      Wallace Nutting



The Window Garden  
C 771



Uncle Sam Taking Leave  
S or C 294



The Sallying of Sally  
C 118



A Bit of Sewing

A or C 173

Wallace Nutting



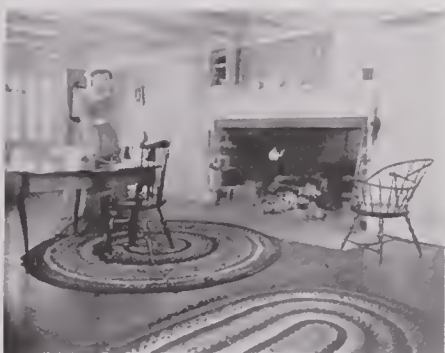
An Ancient Secretary  
S 966



A Threatened Shower  
C or S 495



From the Old Bucket  
S or C 942



A Plate of Cookies

C 67



A Chair to be Filled

C 1301



An Afternoon Tea

C, E or G 703



The Lady in Green

S 141



A Private View Wallace Nutting  
A. Q. S. O. P 209



Bag and Baggage

S 106



Mending

C, E or G 677

Wallace Nutting



A Call in State C 140



What Shall I Answer? S or P 2472



An Affectionate Greeting C 113



From a Friend S 159



The Going Forth of Betty S or E 420



A Flower Home Q or S 2235



Maiden Reveries

C. E or F 681



Braiding a Rag Rug

A, C and E 3728

Wallace Nutting



Afternoon in Nantucket S or C 1026



Primping A 135



Fashionable 'Sconset S or C 1022



The Judge's Daughter S or C 2181



Laying the Fire S or C 17



Wistaria Lodge C 2142



The Maple Sugar Cupboard

C, P, E, G 734

Wallace Nutting



Warming the Cream

C 963



Pinning the Lace Q, S, O, P 1393



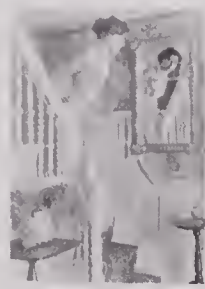
A Lavender Canopy

C 2180



To Slumberland

A, C or E 2292



Who's in the Parlor?  
A 59



After the Party

C or E 2295





A Maid and a Mirror Q, S 1394



Up the Half Stair Q 1396



The Last Touches  
Q, S, O, P 1498



Dainty China A, Q, S, C, O, P, E 1499 Copyright 1912, Wallace Nutting



Admiration

Wallace Nutting

C 454



Announcing the Engagement

Wallace Nutting

A, C and E 403



The Reception

S 3588



Mending the Quilt

A 3625



Nuttingholm at Framingham  
(Not an art subject)



A Musical Reverie

C 1509

Wallace Nutting

A Dreamy Poetic Theme



Comfort and a Cat

C 545

Wallace Nutting



Garden Gossip

A or S 2250



After Tea

A or C 2249



A Chat at the Window

C or E 915



The News in Brief A, C and E 254 Wallace Nutting



An Old Drawing Room C 1388 Wallace Nutting



The Spinnet Corner A, C, E 1389 Wallace Nutting



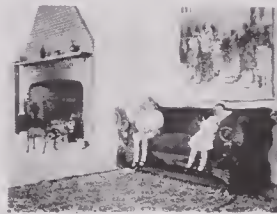
City of Paris Paper A, S and P 779 Wallace Nutting



Panniers of the Past S 1339 Wallace Nutting



Under the Wistaria C 2177



Her First "At Home" A, G 320



While I Was Musing Q, C 283



Wavering Footsteps C 2531



A Sunny Corner A, C 3702



The Tangled Skein C 1510 Wallace Nutting



The Morning Mail C 1507 Wallace Nutting



Colonial Dames at Tea C 298



17th Century A, C or E 10



Sisterly Criticism C 804



Ivy Pruning S 1024



Shy Before Guests C 2291

In order to guarantee the appropriateness of our old-fashioned subjects, Mr. Nutting has for years made a special study of old furniture and Colonial architecture, and has at last even written a book on the subject illustrated in color with his pictures.



For the Honored Guest  
Q 889



Watching for Papa  
S 2532



Parting at the Gate  
S 2133



A Breezy Call  
Q 1018



The Sand Mirror  
A 2074



Christmas Jelly

S 52



Summoned to the Parlor  
A 2589



A Cold Day

A, C or E 962

Wallace Nutting

A very ancient North Shore fireplace made in the days of double ovens back of the hearth itself.



An Elaborate Dinner

C, E, F or J 746



A Tap at the Squire's Door  
C 119



The Marvin Door  
Q, S or C 918



Callers at the Squire's  
C 124



Salem Beautiful  
C 994



Beth  
C 999



A Rebellious Vine  
Q, S or C 2165



All the News—and More

C. E. F and G 396

Wallace Nutting



Resting at the Old Stoop

A, C or E 416



The Sea Cap'n's Daughter

Q, S or C 995





In John Hancock's Chair

S, P 3670



A Dutch Knitting Lesson

A, S, C, E 5066



A Friend's Farewell A and C 1356 Wallace Nutting



Almost Ready

S, C, E or G 641



An Old Tune Revived S or C 261



A Wayward Branch C 2182



Children of The Sea A or S 2071



Nursing the Fire A, Q, S or C 7



Gathering a Bouquet Q 1033



The Flower Missionary Q or C 1029



Jane A, Q or C 1031



Gathering Blossoms C 2613



An Eventful Journey C 101



At the Side Door C 175



A Hearty Welcome C 747



A Cranford Tea Pouring C 914



Drying Apples

C 429



Is the Fire Ready?

C 222



In Grandma's Day  
A 401



A Peep in the Mirror  
A 448



Patience on a Chippendale  
A 349



A True D. A. R.  
A or S 232



To Meet the Rector C 2499



Maidenly Pleasures  
A 156



A Friendly Reception  
A or C 142



To Meet Papa C 2296



St. John's Church, Portsmouth, N. H.  
C 568



Thanksgiving Goodies C 595



A Sip of Tea

C 551



Morning Duties

A or C 66



Diligence

C 259



A Southern Puritan

C 2122



The Way it Begins

C 214



A Morning Errand

C 2143



The Chopping Bowl

C 960



A Fleck of Sunshine S, P or T 985



Indian Maidens S 533



At the Well, Sorrento Q, S or P 433



Bean Porridge Hot C 591



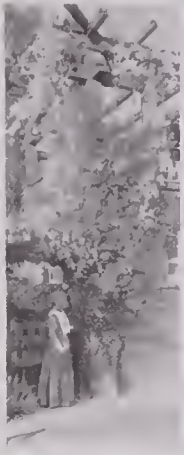
The Cup that Cheers A or C 72



A Dilatory Escort C or E 772



A Mother of the Revolution A, C or E 485



Wistaria Gate  
Q 2117



A Corner in China

A, C or E 1021



The Last Word  
Q 1023



A Daughter of Eve  
C 631



The New Cap  
C 613



The Swift C 687



An Old Time Gallant  
C 208



Nap Time Stories

A, C, E or F 2511

Wallace Nutting



Betty and her Basket C 227



A Slow Fire C 961



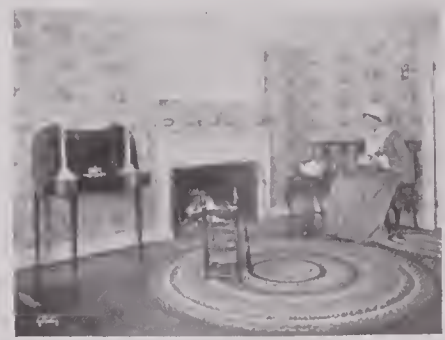
Afternoon Shadows C 486



Going for the Doctor C 279



The Tea Maid C 602



Light Refreshments C 329



Picture Paper C 302



A Colonial Three Decker C 636



Cutting Biscuit  
C 226



An Old Parlor Idyl  
C 127



A Watched Pot  
C 223



A Porch Tea  
C 2721



Tea at Uncle Jonathan's  
C 129



His Move  
C 236



Hesitancy  
C 231



Choosing a Bonnet  
C 2627



Front Door with  
Hinged Panel  
C 2653



There's Rosemary  
C 309



The Selection  
C 614



Southbury Porch  
C 195



A Salem Door  
C 180



Winding Among  
Yosemite Oaks  
C 877



The Work Basket  
A 2736



The Parson's Gate  
A 96



Pride  
C 744



Early Mother Instinct  
A 623





La Jolla

Q, S, C, O, P, E, T, G 2240

Wallace Nutting

The picture above shows the finest cliffs on the American coast. There are eaves behind the great breakers. The cliff being hundreds of feet in height the waves are really high also. This beautiful marine is attractive especially when well understood.



The Restless Deep

Q or C 660



On the Heights

Q, S or C 65



A Stone Churn

C 412



Sea Ledges

Q, S, C, O, P, T, G, H 240

Wallace Nutting



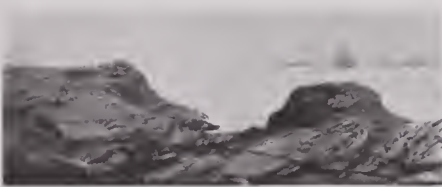
The Rhode Island Coast

O 300



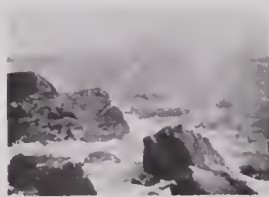
Hunter's Island

O or P 206



Off Shore

Q 425



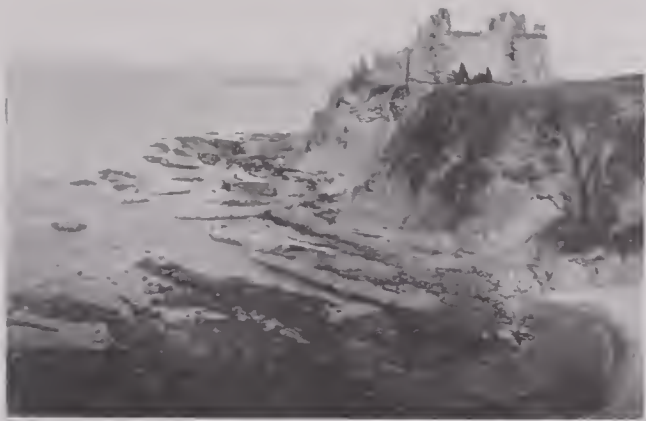
Rocks off Portland, Me.

A 297



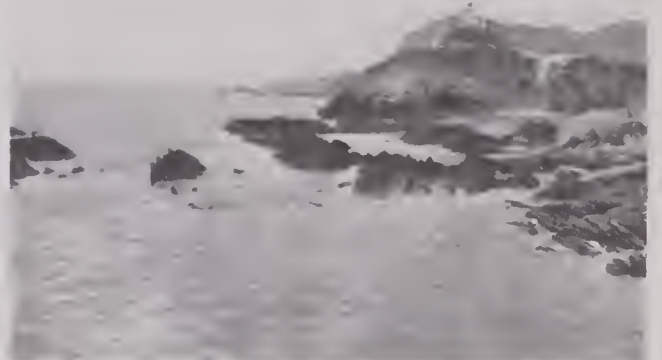
Sea Foam

P 28



Tantallon Hold

A. C 5820



Ilfracombe

S 5664



A Cypress by the Sea C 2280



A Florida Sunrise  
A, Q or S 1119



The Way of the Sea C 2303



Cypress Heights

C or E 2276



Rivulets of Foam

Q, S 2257

Wallace Nutting



Ocean Eddies

O, P or E 385



Dutch Fishing Boats

A, S 6514



The Brook's Mouth  
A, Q, S, O, P 5677

A supplement to the Mar-ines will be issued in the course of the spring of 1915, showing various additional surf scenes. Buyers who require such scenes are safe to order them for spring delivery. The picture on this page called "The Brook's Mouth" is on the North Devon coast, and is very attractive in wider forms also. Under the title "A Little Haven," somewhat different, it is supplied in the C and E sizes long vertically.



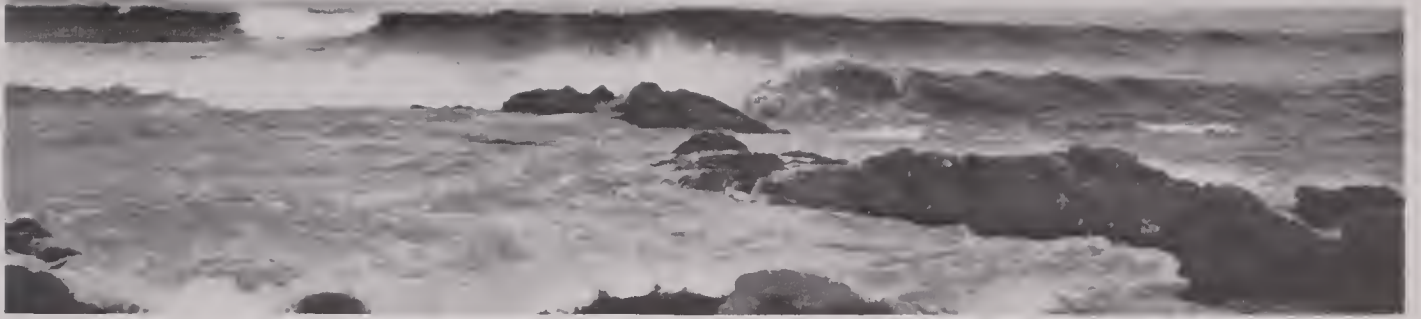
Positano

E 13



The Endless Battle

S 407



Maine Surf

O and W 3

Wallace Nutting



Cetara

C 4071



Cypress Rocks

C and E 2253

Wallace Nutting



Vico Equesne

S 4007

Wallace Nutting



The Pergola, Amalfi

A, C, E or F 480

Wallace Nutting

The Pergola at Amalfi is perhaps the best known Italian picture. It has been made by a multitude of artists, who usually have a person pose as a monk in the foreground. Mr. Nutting paid him to remove himself, because he is no real monk and the



Amalfi

C or E 47

scene requires dignity without personality. It has been, and still is, one of the most popular subjects. "Vico Equesne," at the top of the page, shows the streamers of smoke from Vesuvius. It is on the south side of the Bay of Naples near Sorrento.



A Lakeside Belvidere

A, C 4483



A New Hampshire Stream

A, C 3469



Spring in the Mountains

A, C, E 4479



A Nestling Village

A, C 5680

## MOUNTAINS

The scene above, "Spring in the Mountains," in this shape, and as a horizontal on page 653, is a charming combination of stream, bridge, foliage and mountain. It is made in North Italy near Lake Maggiore. "A New Hampshire Stream" shows the White Mountains in the distance and ought to be very popular with people who like the New England hills. "The Nestling Village" is in Lynmouth, on the north shore of Devon.



The Valley of Wonder

C 680



A Cañon Stream C 2468



California Hill Tops C 866



The Strength of the Hills C 787



Equinox Pond P 2621



Fair Vale

(Midsummer Vale. A, C, E, G 6114, similar and better)

A, S, C, P, E 6123





The Tranquil Vale

A, Q, S, O, P 6134

The picture above is a wonderfully charming combination of stream and mountain, the boat in the mid-distance enhances the attraction. The peak in the central distance is Snowdon. The stream is the Glasslyn in South Wales, near the Vale of Festiniog. Wales is by all odds the most picturesque portion of Britain and Britain is the best of Europe. We have no less than 400 subjects made in Wales.



A Como Promontory

A, S, C 4461



Spring Brookside

S 4484



Spring's First Green

A, C, E, G 4463

Wallace Nutting

## MOUNTAIN SCENERIES

Men buy very few pictures. They usually leave this attractive pastime to their wives, who do not care so much for mountains as for blossoms and figures. Nevertheless, year in and year out, a mountain view is reposeful and inspiring and perhaps wears better than almost anything else. We lift up our eyes to the hills and get help.

"Skirting Lake Como" shows a section of the highway just before entering a tunnel. It is a soft golden-orange day.



The Old Red Schoolhouse E 162



A Como Crest

A C 4459



Skirting Lake Como

A. C 4370



A Twilight River

A, S 4745



The Rhine at Drechenfels

A, S 4875

On the next page appears a most attractive view of Derwentwater. The reeds in the foreground with a ripple running through them and the soft clouds on the mountains, together with breadth of effect, can scarcely be surpassed as a mountain scene. We recommend this very highly, especially in the Q and S sizes.

On pages 655 and 656 appear the same subject, one made in the morning and one in the evening. The evening print gives rich golden twilight lights. "The Long Look" on page 656 is a magnificent sweep of a Vermont river without the natural clouds. If you wish to get natural clouds it is easy to do so, but when the sky is clear we paint in clouds as the scene seems to require.

We do not show many scenes in the Yosemite, although we have more than seventy; especially there is one called "The Valley of Wonder" from Inspiration Point, in various sizes, which cannot fail to please. It is not illustrated here. There is also a view of the Yosemite Falls against Mercia showing a reflection of the fall in the river and the fine natural clouds.



The Meandering Battenkill

O or E 216



Beneath the Yosemite  
Q 740

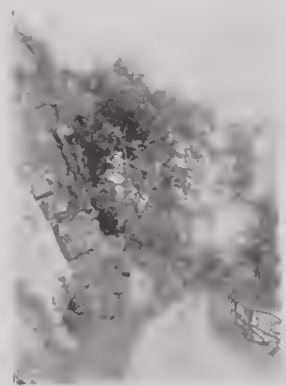


The Long Look

A, C or E 2570



El Capitan  
Q or C 725



The Windings of Undercliff  
E 79



A Forest Portcullis  
E 2685



Undercliff Drive E 76



Derwentwater

Q, S, P 5949

Wallace Nutting



Across the Meadows

Q 529



A Warm Spring Day

Q S, O, P, E, T 323

Wallace Nutting

By far the most popular sheep picture ever made. It has been pirated and one pirate has even signed his name to it. Yet it continues to hold its place at the head.



Under the Blossoms

C 6



Tranquility Farm

S or C 860



A Willow Pastoral

S 732



Pasture Dell

S 257



Arlington Hills

O 192



Among the Rocks

O 98



Fording the Connecticut

Q, S, O, P, T 3027

Wallace Nutting



The Breakfast Hour

Q or S 237



By the Wayside

Q 859



The Life of the Golden Age

S, O, P, T 321

Under Cathedrals on page 359 will be found a beautiful aspect of Bolton Abbey, appearing in several sizes, with cows in the stream. Also on the same page is St. David's Palace, taken in a pasture, with sheep.

The following are not illustrated: C and E 8055, "Salting the Sheep"—a fine merino subject. "Feminine Curiosity" (C and E 8009), a spirited picture of Jerseys. "Merinos" (Q 8759) shows a line of Merino bucks.



A Genial Stream

A, Q, S, O, P 6283

Wallace Nutting



Seeking the Shade

A, S 6227



Sheep at the Temple, Paestum

A, S, T, G 4079



The Herd in the Stream

A, Q, O 6205



On the Slope

S or P 312



Mary's Little Lamb

A, C 5561



A Favorite Corner

A, C and E 8005



Blossom Pasture

O 46



Not One of the Four Hundred C 2604



Noblesse Oblige

C 1857



Wilburton Slopes

C 3568



The Meeting Place

C, E and G 916





Seven Bridge Road

C and E 8033



The Arched Lane

C 1726

Wallace Nutting



Under the Sycamore Bough  
C 2308



The Mystery of Curves  
E 71



Royal Palm and Oak  
A, S or C 1117



Cedar Lane, Ravello Q 4107



A Gambrel Roofed Road  
P 80



Old Ravello Q 4034



A Sorrento Lane  
Q 32



Roadway Arches

A, C 4748



A Woodland Drive  
O 51



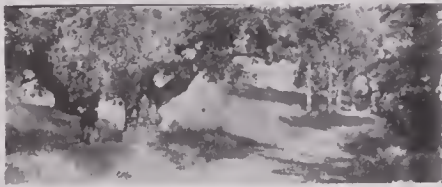
The Village Manor

S, P, T 5610



The Curve

Q, O 2706



Friendly Oak Arms

Q 865



A Southern "Watering Place"  
A or S 2034

In Mr. Nutting's early picture making, roads were the principal subjects; but in process of time it appeared that roads with blossoms, or birches, or cottages absorbed the greater part of this classification. The roads here shown, therefore, are for the most part only such as have none of those features. They consist largely of elms, or oaks, or evergreens, and were made in many states of the Union. They include scenes all along the Atlantic and Pacific Coasts.

The Seven Bridge Road on page 751 is the finest elm road to be found. It can no longer be photographed satisfactorily, as it has been straightened and trimmed until it has lost all artistic quality. "The Southern Moss" shown on pages 756 and 757, is very attractive. There are also live oaks and western forest scenes. For pure art we recommend "Cedar Lane" on page 751. It would not, however, be so popular as the "New England Road in May" on page 754.



The Pine by the Cleft

E 56



The Dell Road

Wallace Nutting

S 762



Meadow Arches

A, S, C, P, E, F, T, G 1328

Wallace Nutting



A New England Road in May

E 134

Wallace Nutting



A Connecticut Roadside

Q 973



A Mossy Drive

A 82



Over the Valley

Q 343



The Home Lane

C 1432

Wallace Nutting



A Great Wayside Oak

A, C, E and F 608

Wallace Nutting



A Sunkissed Way

A, S, C, P, E, F, G, H and J 964



Mossy Logs

E 83



A Forest Drive  
O 102



A Sherborn October

S 1730



Poplar Lane  
O 215



Eagle Cliff Drive

E and H 1

Wallace Nutting



A Disappearing Curve A, C or E 887



A Southern Highway C or E 1057



Evergreen Shadows C 430



A Woodland Way A 901



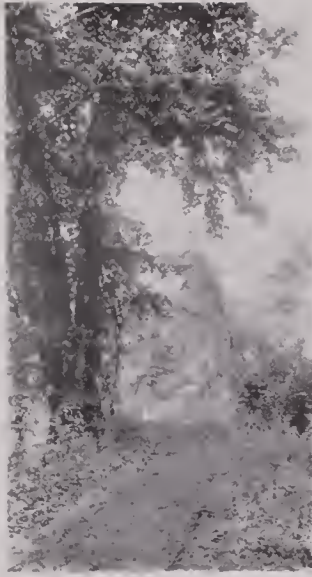
The Sweep Under the Elms C 705



Shadows Athwart A, S, C, P, E, F, J, W 950 Wallace Nutting



A Minnewaska Road E 86



Elm Drapery S, P or J 197



A Vermont Road C, E or G 199



The Hill Road Oak C 2274



Oak and Resurrection Fern  
A, C or E 1123



A Bridgewater Road C 858



A Mountain Oak C 2311



A California Oak C 2212



In the Big Timber C or J 2464



The Meeting of the Ways  
Wallace Nutting  
A and C 475



Soft Summer Shadows  
Wallace Nutting  
A, C and E 1725



A Mohonk Drive  
O or E 75



The Turn Homeward  
C and E 406  
Wallace Nutting



Gethsemane  
C or E 44



Royal Palm Border  
A or C 632



A Cedar Forest  
S or W 2463



Autumn in Litchfield  
C 853





Millside

Q 6428



From the Mountain

Q 5681



Plymouth Curves

Q and O 3775



Hereford

S 5838



Long River Lights

A 5732



The Old Breast Wheel

A, C 6426



The Calm of Twilight

A. Q. S. C 6115



On the Teith

A. S 5937



The Upper Thames

A. S 6277



A Devon Brook

A. C 5679



The River Meadow

A. C. E 5654



Up the Vale

E. P 6111



The Upper Winooski

C, E 3697



The Walk under the Buttonwoods

C, E and H 8080



Under the Elm

A, C 3757



The Home Vale

A, C 6403



North Shore Marshes

Wallace Nutting

A, Q, S, C, O, P, E 870



A Lane of Light

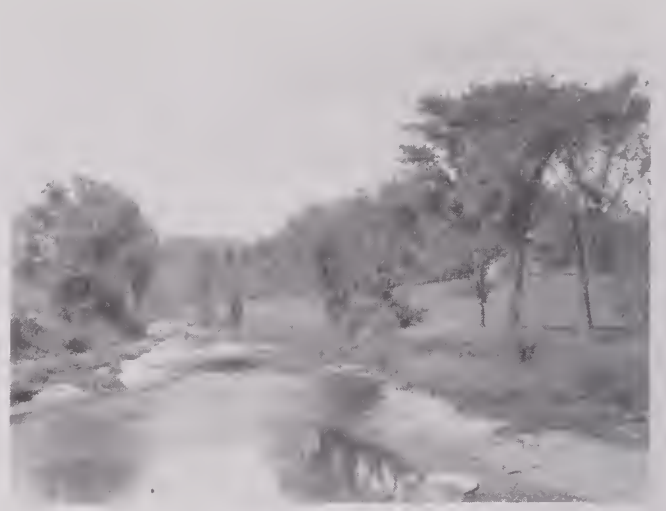
C 1095

Wallace Nutting



A Barre Brook

Q, C, O, P, E and J 3497



The River Valley

Q, C 3715



Summer Wind

A, C, O, E, H or J 295



Newton Meadows

Wallace Nutting

Q, S, O, P, E 1505



Spring in the Meadow

Wallace Nutting

S 1439



Doune Bank

A, C 5964



Brook Grasses

A 3627



Pomperaug Banks

Q 948



Still Depths  
A 469



Twin Elms

Q 2686



Into the West  
Q 484



Along the Pawtuxet

C, E or F 5

Wallace Nutting



Nine-Mile Pond  
Q 2



A Little River

Q, O, P and T 3701



West River

Q 3507



The Cottage on the Floss

S 1098



An Oregon Stream

S 2462



Where Lilies Blow

C 1202



Southern Charm

A or C 1125



Pomperaug Water

O or P 290



Willow Arcade

O 184



Evening at the River Bend

P or E 154



A Pasture Stream

P or E 288



The Foot of the Moorland

A, C 5832



A Little Dutch Cove

A, Q, C 5090



A Vermont River

A and S 3551



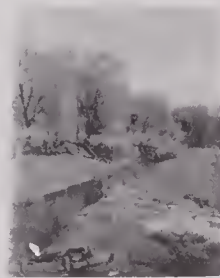
Up the Creek

A 3029



Golden Twilight

Q 544



Sleepy Hollow Brook  
S or C 273



Wilder Pond

Q 166



Oak Brook

C or F 2442



Inclining Palmettos

Q, C, P or O 1070



Slack Water

S, O, P or W 268  
(Also now furnished in T size)

Wallace Nutting



Lingering Waters  
Wallace Nutting  
A, Q, S, C, O, P, E 668



In Tender Leaf  
Wallace Nutting  
A, Q, S, O, P, E, T 667



River Curves  
Q or C 397



Around the Bend  
Q 363



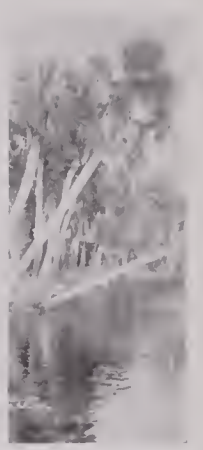


Florida Grace  
Q or C 1081



Westfield Water

Q, C, E or J 1006



Leaning Palmettos  
Q or C 1072



Old England in  
New England  
A 601



Along Shore  
A 2707



The Shade by  
the Brook  
A or C 1004



Where the River Waits

C or P 1013



Shore Lights  
A 2537



October on the River

E 16



The Manchester Battenkill

E 210



The Swimming Pool

Q, S, C, O, P, E, G, H or W 220

Wallace Nutting



Sunset Fires  
Q 2645



Russet and Gold (Also in C size)

E 43



Elm and Bridge  
Q or C 540



A Favorite Waterside

E 342



The Unbroken Flow

E 228



Watersmeet

C 481



Down the Lake

C 176



Soft Evening Lights

C 153



Rippling Into Silence

A, Q or C 650



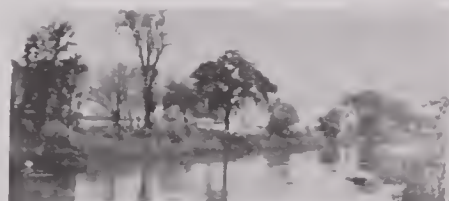
Among Litchfield Hills

E 326



The Trout Brook

O or E 219



Paradise Valley

Q or S 791



A Brook in Doubt

E 253



A Summer Stream

E 15



The Broads of the Housatonic

O 324



Shore Acres

O 168



Between Cloud-crested Hills

O 2665



A Hint of September

O, P or J 256



An Artist's River

A, Q, C, E or G 2562



Watersmeet

E. F. G 167

Wallace Nutting



On the Passumpic

C 1838

Water scenes are probably next to blossoms and colonials in order of popularity. In the minds of many buyers they rank above the one or the other of the two last named. "Slack Water" (page 808) has had remarkable popularity in all sizes. The richness and softness of the lights and shadows give it an enduring charm. The two pictures below it are among the most beautiful of water subjects. That at the left has autumn tints and a vine in red running up the leaning tree. The other is in spring coloring, and the lights in the distance are very charming.

"Westfield Water" (page 809), with the picturesque herring-bone effect of the ripples and the perspective reaching into the shadows, is one of the most delightful and restful scenes. "The Swimming Pool" (page 810), with its rich greens of foliage and water, has enjoyed an unslacking popularity for years. "Russet and Gold," just below, with its vivid variety of fall hues, is perhaps the most striking of autumn subjects. More than one have preferred it above all other out-door subjects.

Mr. Nutting's recent European tour made splendid additions to the water subjects. "From the Mountain" (page 801), "The River Meadow" (page 802), "The Foot of the Moorland" (page 807), and "Lorna Doone Brook" (page 814), are among the most delightful of these. "On the Teith" (page 802) is a charming combination of water and pastoral subjects, — a beautiful Scotch river, with sheep feeding along the hills.



Fall Gowns

C, S 3648



Lorna Doone Brook

A, C, E 5658



A Berkshire Water Way C 718



Broken Lights S or P 286



Mid-May C 272



Water Maples

C, E or J 50



A Mossy Stair

E 207



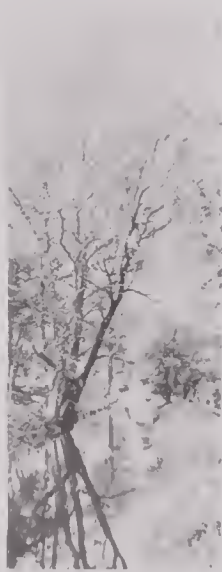
On the Pequest River

E 48



Purity

O 81



Above the Mill

O 2698



Elm Brook

Q or O 2575



Lichen in the Glen

O, P or E 200



August in the Meadow

O, P, E, G or T 70

Wallace Nutting



A Newton October C 1702 Wallace Nutting



The Nashua Asleep C 1516 Wallace Nutting



Full Stream A 881



A Highland Brae A 910



The Golden West A 147



The Witching Hour A 1175



Undulating Reflections A, Q, C, O, P or E 2016



The Sudbury in October Wallace Nutting  
C and E 1710





A Lake Shore Oak A or C 549



Sunset Palmettos Q, C, P or E 1084



Spring Fishing A, Q or C 926



The Pass C 2261



Clouds Over the Housatonic E 337



A Woodstock Arch C 151



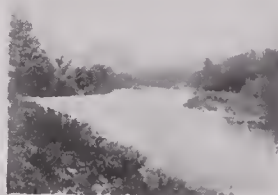
Where Streams Converge P 121



Early Summer P 186



A Mystery Pool C 2316



Tekoa Q, S or C 1008



A Poet's Brook C 2553



A Western Creek C 2461



Pine Landing A, Q, C or E 437



A Look Ahead S 447



A Mountain Beck C 5805



The Play of Branches C 5806



A Passumpic Curve C 2670



Witch Water Q 282



Winslow Water C 946



Style 487

## CALENDARS

Any of our pictures can be placed on calendars to order. We add the price of making up the calendar to the price of the picture, thus a print like the above in the C size which retails at \$2.50 is prepared to retail for \$2.75 as a calendar. On the pages following will be found a few samples of styles illustrated, with various other styles described but not illustrated.

**Style 487** (Previous page.)

Outside mounting, 14 x 17.  
Any vertical picture, 8 x 10.  
Base, brown.  
Top, amber.  
Picture overlay, cream; ribbon, brown.  
Price per dozen of 13, \$33.00; each, \$2.75.  
(Same price for all on this page.)

**Style 485**

Outside mounting, 14 x 17.  
Any vertical picture, 8 x 10.  
Base, white; overlay, green; top, white.  
Picture plate marked; ribbon, green.  
Sentiment pad:

*“May life flow like a river,  
With enough stones to make music  
And enough depth to bear treasure  
Of Friendship and Happiness.”*

**Style 483**

Outside mounting, 14 x 17.  
Any horizontal picture, 8 x 10.  
Base, white.  
Picture plate marked; ribbon white.  
Pad engraved:

*“When good friends meet the hours are fleet,  
Till then slow rolls time's cumbrous car  
Whose dial is the calendar.”*

**Style 489**

Outside mounting, 14 x 17.  
Any vertical picture, 8 x 10, in plate mark.  
Base, white with India basket picture lining.  
White cord; pad:

*“When good friends meet.”* (See style above.)

**Style 488**

Outside mounting, 14 x 17.  
Any horizontal picture, 8 x 10, preferably autumnal, in plate mark.  
Base, amber.  
Top, cream; ribbon, brown.  
Sentiment:

*“The soft south wind, the flowers amid the grass,  
The fragrant earth, the sweet sounds everywhere,  
Seem gifts too great almost for man to bear.”*

WILLIAM MORRIS.



Style 466-Q picture



Style 478-S picture

### Style 466

Outside mounting, 9 x 17.  
Any picture, 4 x 10.  
Base, white.  
Overlay, gray.  
Top, white.  
Ribbon, white.  
Price per dozen of 13, \$20.00; \$1.75  
each.

### Style 478

Outside mounting, 11 x 17.  
Any picture, 6 x 10.  
Base, white  
Overlay, white.  
Top, white.  
Ribbon, pink.  
Price per dozen of 13, \$25.00; \$2.25  
each.

**Style 461**

Same as Style 466, except blue overlay and "Calendar 1916" pad.

**Style 462**

Same mounting as Style 466, with buff overlay.

**Style 463**

Outside mounting, 9 x 17.

Any vertical picture, 4 x 10.

Base, mottled blue; overlay, light blue.

Top, white; ribbon, light blue.

Engraved on pad:

*"A Smiling Spring,  
Happy Summer, Fruitful Autumn,  
And Winter of Content."*

Price per dozen of 13, \$20.00; each, \$1.75.

**Style 469**

Same mounting as Style 461, with green overlay, and small size pad.

**Style 465**

Same mounting as Style 466, except sentiment:

*"A Smiling Spring,  
Happy Summer, Fruitful Autumn,  
And Winter of Content."*

Engraved on pad; ribbon pink.

**Style 476**

Outside mounting, 11 x 17.

Any vertical picture, 6 x 10.

Base, gray.

Top, white; ribbon, pink.

Sentiment on pad:

*"When good friends meet the hours are fleet,  
Till then slow rolls time's cumbrous car  
Whose dial is the calendar."*

Price per dozen of 13, \$25.00; each, \$2.25.

**Style 472**

Outside mounting, 11 x 17.

Any vertical picture, 6 x 10.

Base, brown.

Top, cream.

Picture lining, cream; ribbon, yellow.

Sentiment engraved on pad:

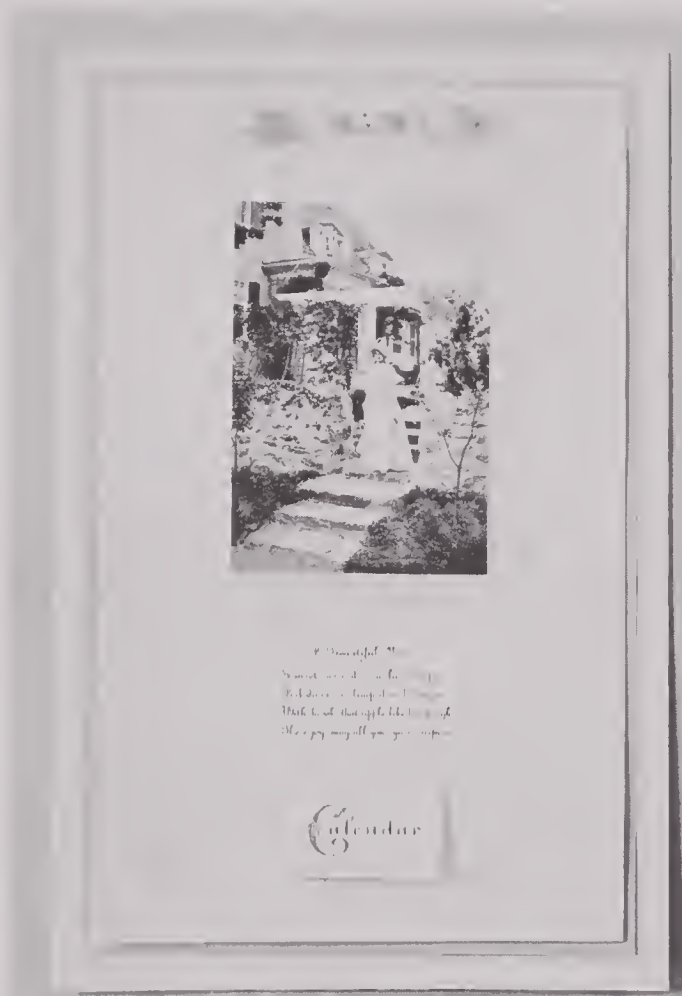
*"A Smiling Spring,  
Happy Summer, Fruitful Autumn,  
And Winter of Content."*

Price per dozen of 13, \$20.00; each, \$1.75.

**Style 473**

Same mounting as Style 478, except sentiment pad engraved:

*"May life flow like a river,  
With enough stones to make music  
And enough depth to bear treasure  
Of Friendship and Happiness."*



Style 458



Style 456

### Style 458

Outside mounting, 11 x 17.  
 Any vertical picture, 5 x 7.  
 Base, white.  
 Overlay, cream.  
 Top, white.  
 Ribbon, yellow.  
 Price per dozen of 13, \$16.00.

### Style 456

Outside mounting, 11 x 17.  
 Only vertical blossom pictures, 5 x 7.  
 Base, white.  
 Overlay, blue.  
 Top, white.  
 Ribbon, white.  
 Price per dozen of 13, \$16.00.

### Style 457

Same mounting as style 456.  
 Only vertical blossom pictures, 5 x 7.  
 Sentiment:  
*"Firm-rooted as an apple tree."*  
 Price per dozen of 13, \$16.00.

### Style 451

Outside mounting, 11 x 17.

Any picture, 5 x 7.

Base, mottled blue; overlay, light blue.

Top, white; ribbon, blue; sentiment:

*"I would send you richest blessings,  
I would keep you from all ill,  
I would give you life's best portion,  
Were the power mine to fulfill."*

Price per dozen of 13, \$16.00.

### Style 452

Outside mounting, 11 x 17.

Any vertical Castle picture, 5 x 7.

Base, mottled blue; overlay, light blue.

Top, white; ribbon, white; sentiment:

*"Our love is like a castle old,  
Whose wall defies the wreck of years,  
And graced by ivy's mantling fold,  
In nobler beauty still appears."*

Price per dozen of 13, \$16.00

### Style 455

Outside mounting, 10 x 14.

Any horizontal picture, 5 x 7.

Base, white; top, white.

Picture overlay, white; ribbon, pink; sentiment:

*"Thanks to the human heart by which we live,  
Thanks to its tenderness, its joys, and fears —  
To me the meanest flower that blows can give  
Thoughts that do often lie too deep for tears."*

Price per dozen of 13, \$16.00.

### Style 460

Outside mounting, 8½ x 14.

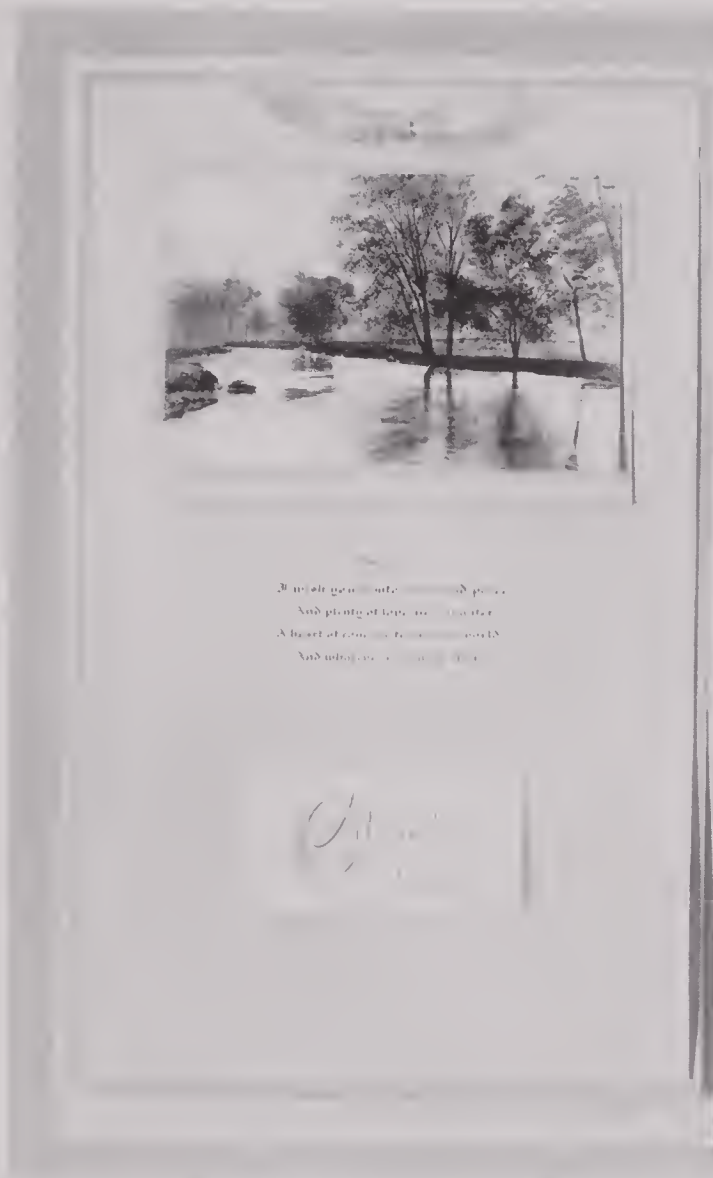
Any vertical picture, 5 x 7.

Base, white; top, white; ribbon, white; sentiment pad:

*"A year of hope,  
Weeks of progress,  
Days of peace."*

Price per dozen of 13, \$16.00.





Style 354

**Style 354**

Outside mounting,  $8\frac{1}{2} \times 14$ .  
 Any horizontal picture,  $4 \times 6$ .  
 Base, white.  
 Overlay, heliotrope.  
 Top, white.  
 Picture overlay, heliotrope.  
 Ribbon, white.  
 Price per dozen of 13, \$12.00.



Style 399

**Style 399**

Outside mounting,  $7\frac{1}{2} \times 14$ .  
 Any vertical picture,  $4 \times 6$ .  
 Base, white.  
 Overlay, green.  
 Top, white.  
 Ribbon, green.  
 Price per dozen of 13, \$12.00.

### Style 353

Outside mounting, 8½ x 14.

Any vertical picture, 4 x 6.

Base, mottled blue; overlay, light blue.

Top, white; ribbon, blue; engraved sentiment:

*“Good health, some wealth,  
Good luck, much pluck,  
Good fun, race won,  
For you to-day.”*

Price per dozen of 13, \$12.00.

### Style 355

Outside mounting, 8½ x 14.

Any horizontal picture, 4 x 6.

Base, light blue; overlay, cream; top, white.

Picture overlay, cream; ribbon, blue; engraved sentiment:

*“True Friendship.  
Those ties are sweet whose strength we keep  
By daily converse with a friend —  
That friendship has a greater deep  
Which space and silence cannot end.”*

Price per dozen of 13, \$12.00.

### Style 360

Outside mounting, 8½ x 14.

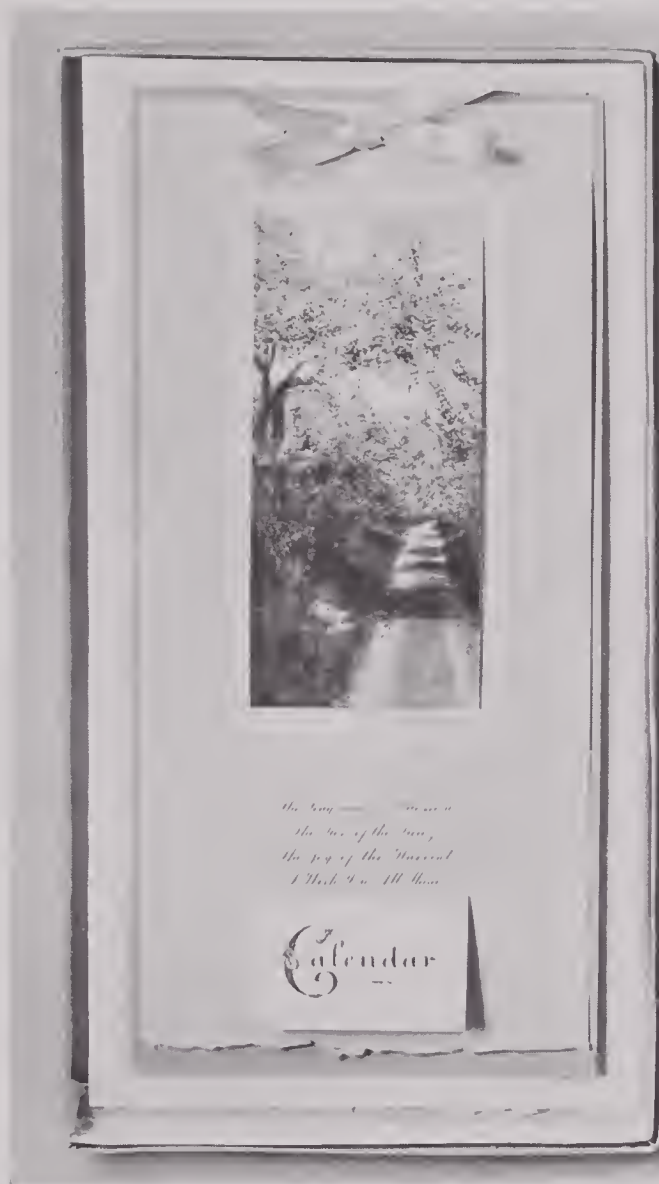
Any vertical colonial picture, 4 x 6.

Base, tea color; overlay, buff.

Top, tea color; 18-inch gray cord; sentiment:

*“My Christmas wish for you: At the close  
of every day's work a welcoming home and the  
joys of friendship. And I ask you to keep  
a little cosy corner in your heart for me.”*

Price per dozen of 13, \$12.00.



Style 285

### Style 285

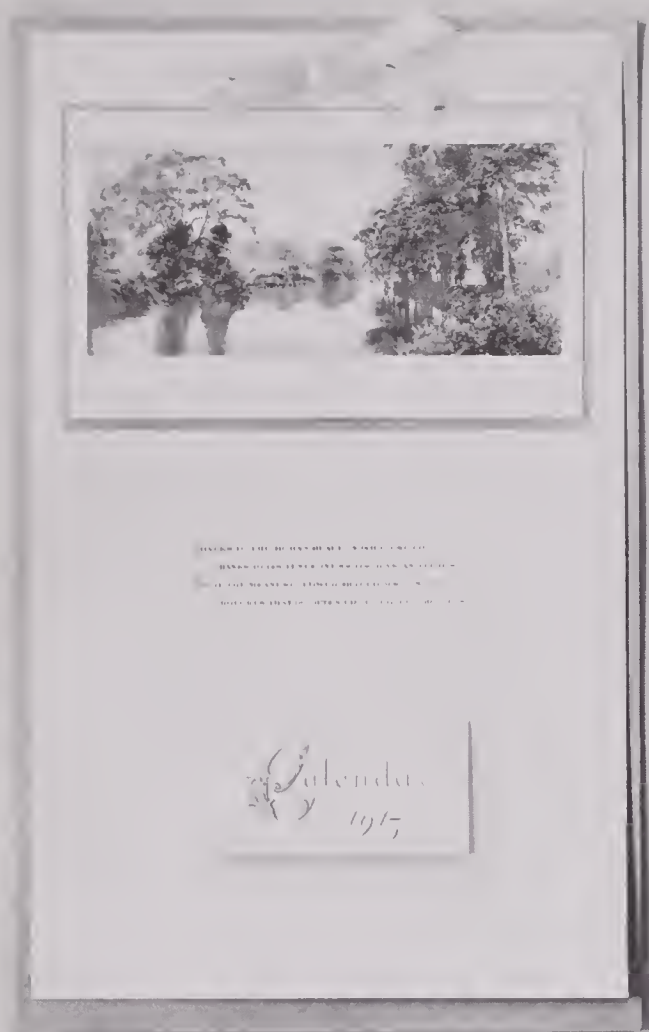
Outside mounting,  $7\frac{1}{2} \times 14$ .  
 Vertical Blossom pictures,  $3 \times 6\frac{5}{8}$ .  
 Base, white.  
 Overlay, gray.  
 Top, white.  
 Ribbon, pink.  
 Price per dozen of 13, \$9.00;  
 \$0.75 each.



Style 264

### Style 264

Outside mounting,  $7\frac{1}{2} \times 14$ .  
 Vertical Colonial pictures,  $3 \times 6\frac{5}{8}$ .  
 Base, gray.  
 Overlay, white.  
 Top, gray.  
 Ribbon, white.  
 Price per dozen of 13, \$9.00;  
 \$0.75 each.



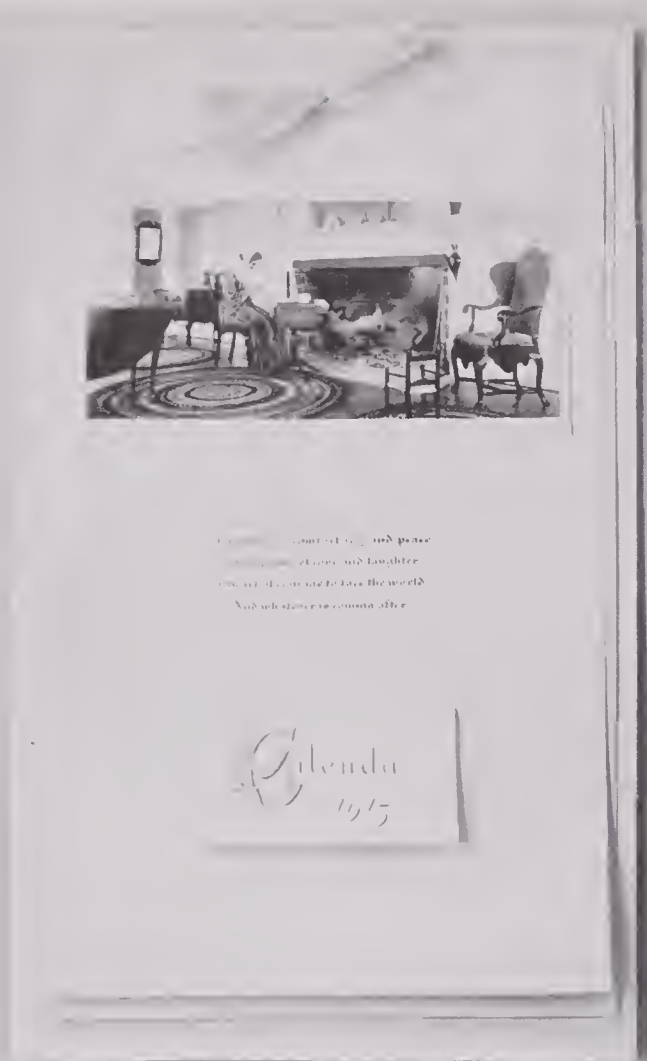
Style 260

### Style 260

Outside mounting,  $8\frac{1}{2} \times 14$ .  
 Any horizontal picture,  $3 \times 6\frac{5}{8}$ .  
 Base, green.  
 Top, white linen.  
 Picture base, green.  
 Picture overlay, white.  
 Ribbon, white.  
 Price per dozen of 13, \$9.00;  
 \$0.75 each.

### Style 261

Outside mounting,  $8\frac{1}{2} \times 14$ .  
 Any horizontal picture,  $3 \times 6\frac{5}{8}$ .  
 Base, white.  
 Overlay, blue.  
 Top, white.  
 Picture overlay, white.  
 Ribbon, white.  
 Sentiment: "Greeting."  
 Price per dozen of 13, \$9.00;  
 \$0.75 each.



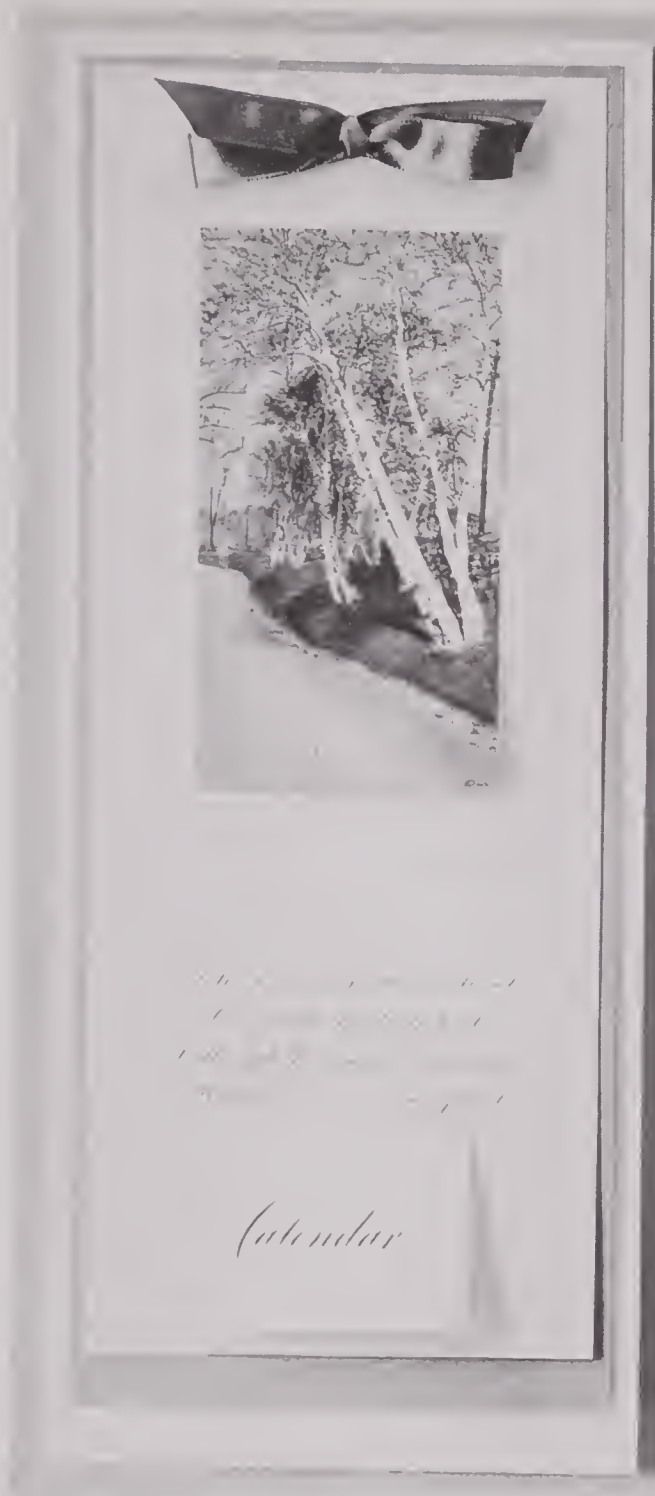
Style 261

### Style 262

Outside mounting,  $8\frac{1}{2} \times 14$ .  
 Any horizontal picture,  $3 \times 6\frac{5}{8}$ .  
 Base, white.  
 Overlay, green.  
 Top, white.  
 Picture overlay, white.  
 Ribbon, green.  
 Sentiment: "Your Best," etc.  
 Price per dozen of 13, \$9.00;  
 \$0.75 each.

### Style 269

Outside mounting,  $5 \times 16$ .  
 Any vertical picture,  $3 \times 6\frac{5}{8}$ .  
 Base, white.  
 Top, white.  
 Ribbon, pink.  
 Sentiment: "Greeting"; same as  
 Style 261.  
 Price per dozen of 13, \$9.00;  
 \$0.75 each.



Style 123

**Style 123**

Outside mounting, 5 x 12.  
 Vertical Birch pictures only,  $2\frac{1}{2} \times 5$ .  
 Base, white.  
 Overlay, green.  
 Top, white; ribbon, green.

**Style 144**

Outside mounting, 5 x 12.  
 Vertical Blossom pictures only,  
 $2\frac{1}{2} \times 5$ .  
 Base, white.  
 Overlay, heliotrope.  
 Top, white; ribbon, white.

Price of all on this page, per dozen of 12 only, \$6.00. Not less than  $\frac{1}{4}$  dozen sold.



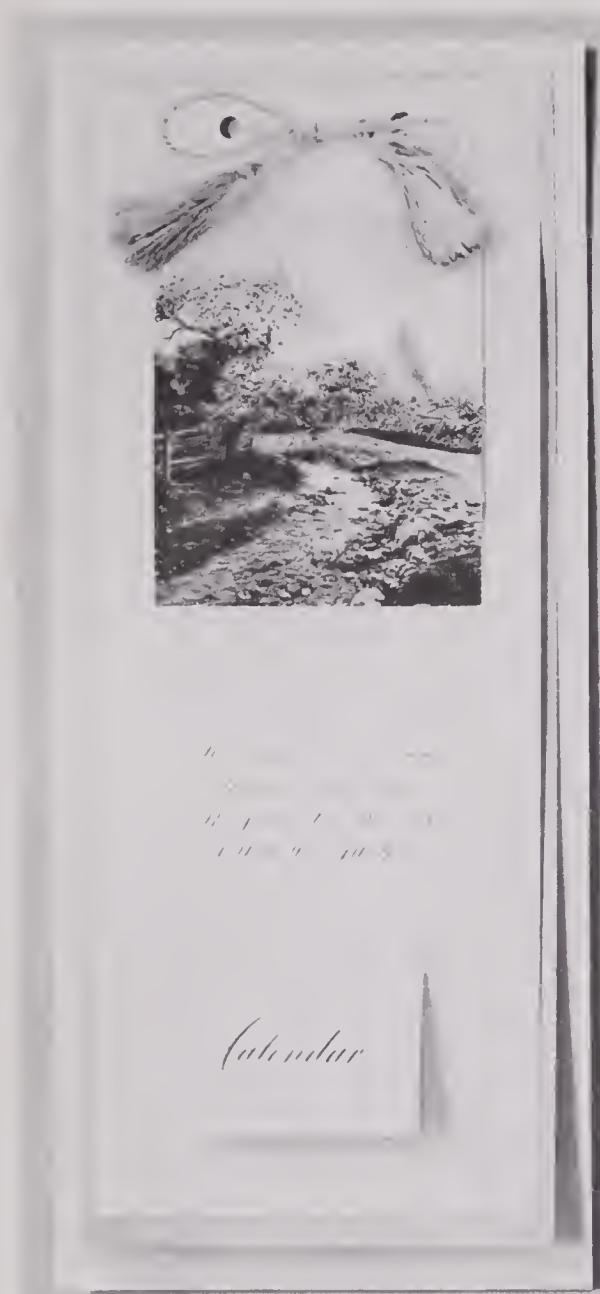
Style 144

**Style 104**

Outside mounting, 5 x 12.  
 Any vertical picture,  $3\frac{1}{4} \times 4$ .  
 Base, cream, overlapping at top.  
 Top, white; ribbon, yellow.  
 Sentiment: "Good health, some  
 wealth," etc.

**Style 108**

Outside mounting, 5 x 12.  
 Any vertical picture,  $2\frac{1}{2} \times 5$ .  
 Base, green, overlapping at top.  
 Top, white; ribbon, green.  
 Sentiment: "All the year," etc.



Style 164



Style 150

### Style 164

Outside mounting, 5 x 12.  
 Any vertical picture,  $3\frac{1}{4}$  x 4.  
 Base, white.  
 Overlay, lavender.  
 Top, white.  
 Lavender cord.  
 All Calendars are sold in white  
 glazed boxes.  
 Price per dozen of 12 only, \$6.00.  
 Not less than  $\frac{1}{4}$  dozen sold.

### Style 155

Same mounting as 150; Figures only.  
 Sentiment: "My Christmas wish for  
 you," etc.  
 Base, white.  
 Overlay, gold.  
 Top, white.  
 Ribbon, white.  
 Price per dozen of 12 only, \$6.00.  
 Not less than  $\frac{1}{4}$  dozen sold.

### Style 150

Outside mounting,  $6\frac{1}{2}$  x 12.  
 Any vertical picture,  $3\frac{1}{4}$  x 4.  
 Base, white; overlay, gold.  
 Top, white; ribbon, white.  
 Price per dozen of 12 only, \$6.00.  
 Not less than  $\frac{1}{4}$  dozen sold.

### Style 153

Same as Style 179, except it has a plate mark instead of picture lining. Sentiment, same as Style 164.

### Style 163

Same as Style 179, except with plate mark instead of picture lining, and sentiment:

*"A Beautiful Year  
Sunssets as red as a lassie's lips,  
And dawns as limpid as her eyes,  
With brooks that ripple like her laugh,  
These joys may all your year comprise."*

Price per dozen of 12 only, \$6.00. Not less than  $\frac{1}{4}$  dozen sold.

### Style 169

Same mounting as Style 179, except ribbon is Dresden. Sentiment:

*"Firm rooted as an apple tree  
True friendships always are,  
And the fragrance of their blossoms  
May be scented from afar."*

Price per dozen of 12 only, \$6.00. Not less than  $\frac{1}{4}$  dozen sold.

### Style 121

Same as Style 136, except picture,  $3\frac{1}{4} \times 4$ , and sentiment:

*"True Friendship  
Those ties are sweet whose strength we keep  
By daily converse with a friend —  
That friendship has a greater deep  
Which space and silence cannot end."*

Price per dozen of 12 only, \$6.00. Not less than  $\frac{1}{4}$  dozen sold.

## THE COURAGE OF CONVICTION

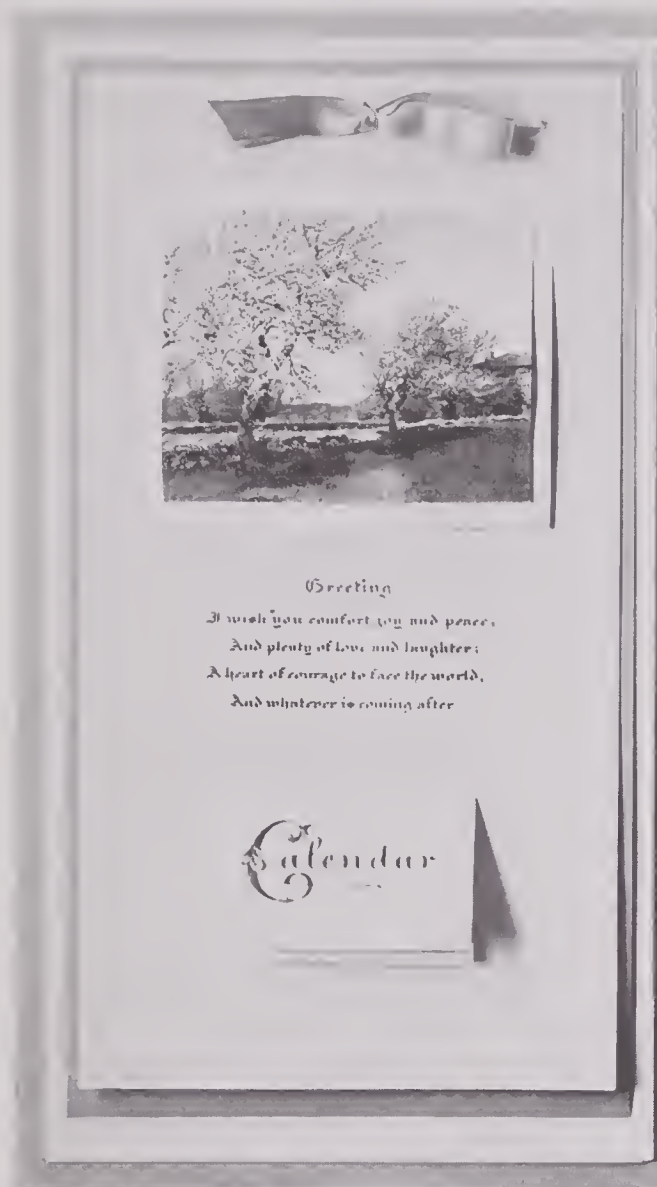
We are the first people to dare to mount calendars in plain white or delicate shades. Hitherto it has been said that customers wanted strong colors. We knew that such colors were not in good taste. We have proved that the public are eager to procure calendars mounted quietly but richly.

## ENGRAVED SENTIMENT

There is no printing whatever on any of our special goods. Everything is in the copper or steel plate — the sentiments, the calendar pads and everything else.

This idea is original with us. Printing below one of our dainty pictures is inappropriate.

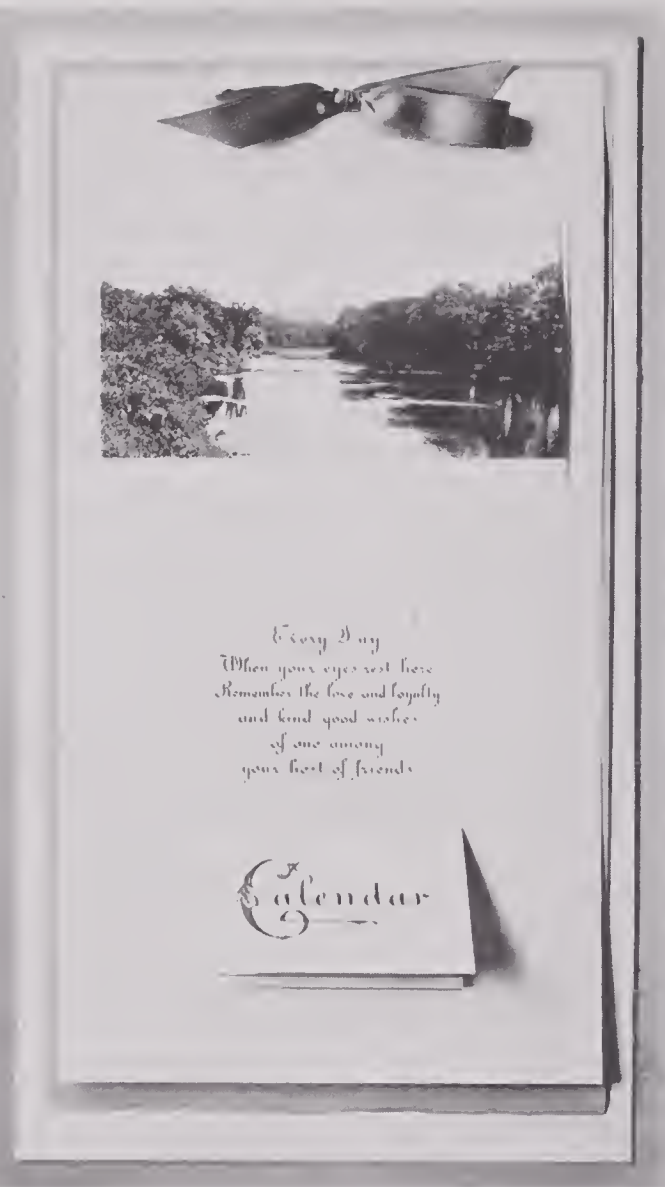
Undoubtedly our line of small goods is far more beautiful than anything hitherto offered. Dealers almost invariably sell out quickly. We do not press sales in this department.



Style 179

### Style 179

Outside mounting,  $6\frac{1}{2} \times 12$ .  
 Any horizontal picture,  $3\frac{1}{4} \times 4$ .  
 Base, white.  
 Overlay, gray.  
 Top, white.  
 Picture lining, white.  
 Ribbon, pink.  
 Price per dozen of 12 only, \$6.00.  
 Not less than  $\frac{1}{4}$  dozen sold.

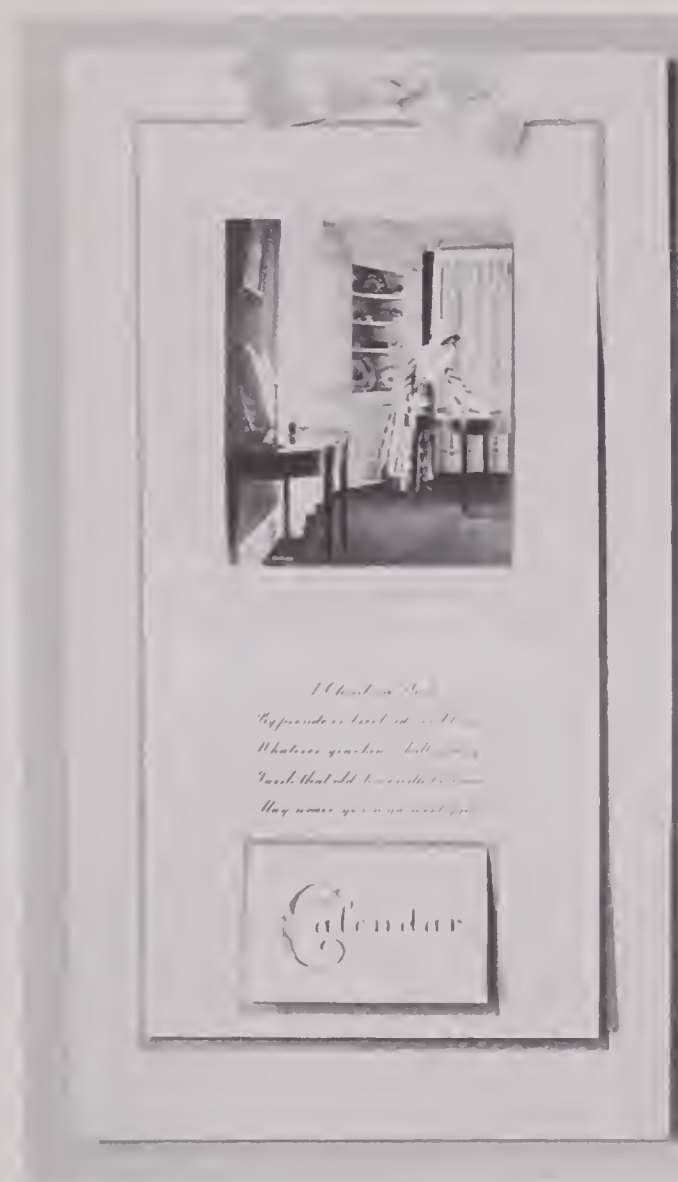


Style 136

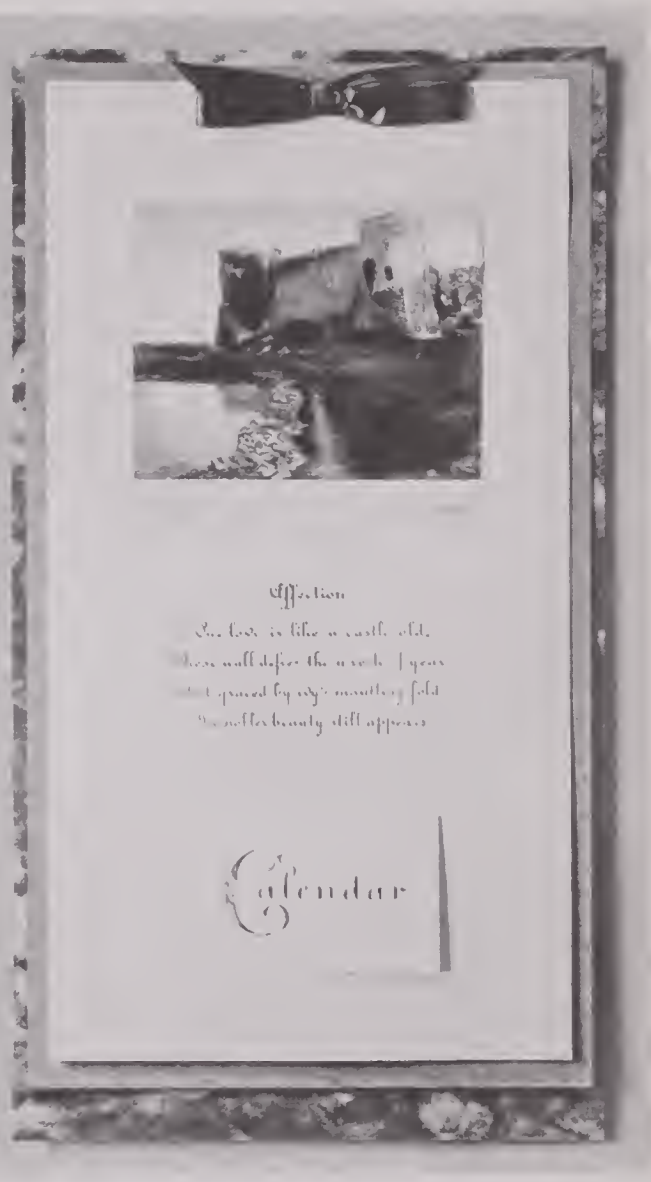
### Style 136

Outside mounting,  $6\frac{1}{2} \times 12$ .  
 Any horizontal picture,  $2\frac{1}{2} \times 5$ .  
 Base, white.  
 Overlay, yellow.  
 Top, white.  
 Picture lining, white.  
 Ribbon, yellow.  
 Price per dozen of 12 only, \$6.00.  
 Not less than  $\frac{1}{4}$  dozen sold.





Style 156



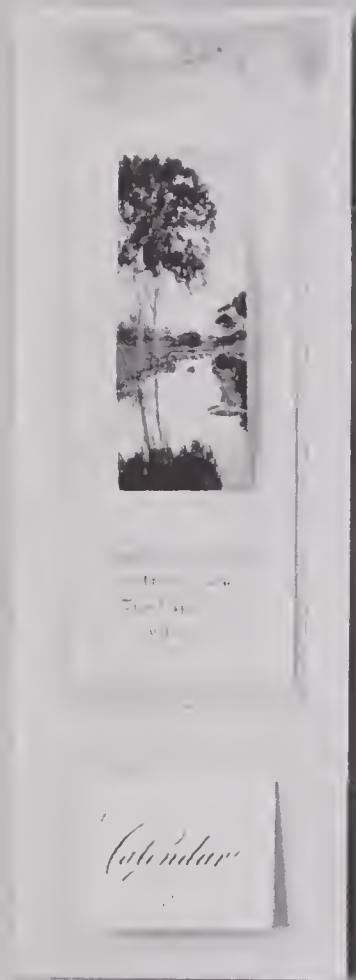
Style 172

### Style 156

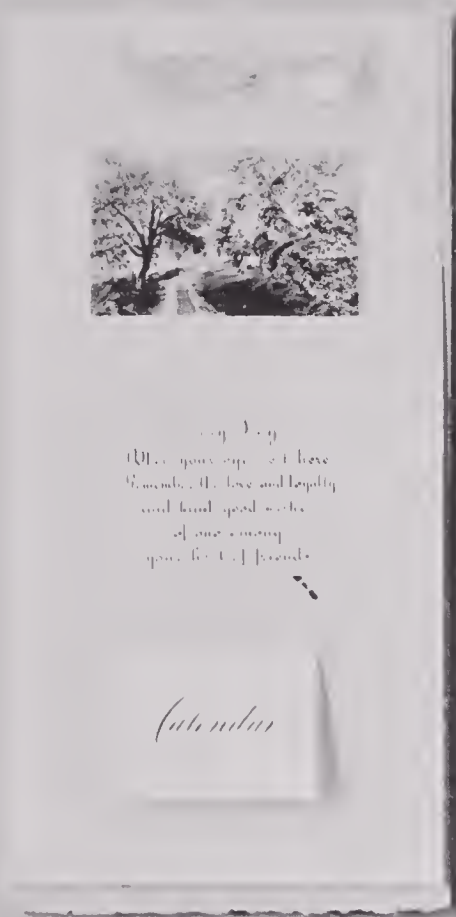
Outside mounting,  $6\frac{1}{2} \times 12$ .  
 Any vertical picture,  $3\frac{1}{4} \times 4$ .  
 Base, white.  
 Overlay, green.  
 Top, white.  
 Calendar pad lining, green.  
 Ribbon, white.  
 Price per dozen of 12 only, \$6.00.  
 Not less than  $\frac{1}{4}$  dozen sold.

### Style 172

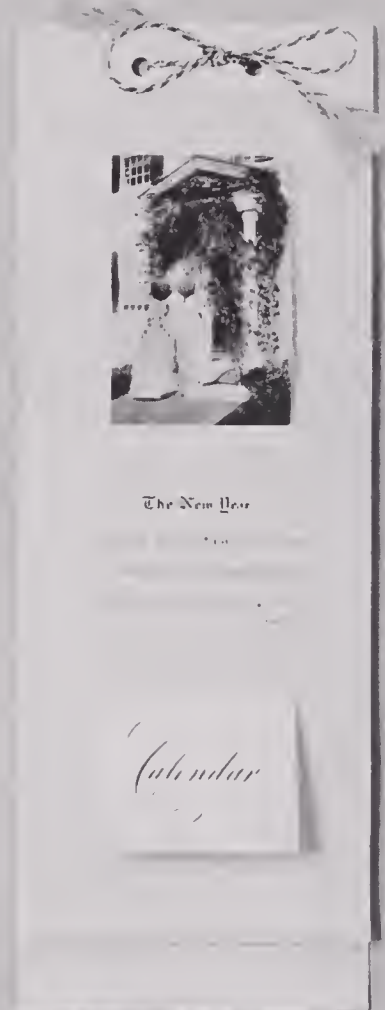
Outside mounting,  $6\frac{1}{2} \times 12$ .  
 Horizontal Castle pictures only,  
 $3\frac{1}{4} \times 4$ .  
 Base, mottled green.  
 Overlay, green.  
 Top, white.  
 Ribbon, green.  
 Price per dozen of 12 only, \$6.00.  
 Not less than  $\frac{1}{4}$  dozen sold.



Style 437, B picture



Style 403, B picture



Style 405, B picture

### Style 437

Outside mounting,  $3\frac{3}{4} \times 11$ .  
 Any vertical picture,  $1\frac{1}{2} \times 4$ .  
 Base, white.  
 Overlay, blue.  
 Top, white.  
 Ribbon, white.  
 Price per dozen of 12 only, \$4.00.  
 Not less than  $\frac{1}{2}$  dozen sold.

### Style 403

Outside mounting,  $5 \times 10$ .  
 Any horizontal picture,  $2 \times 3$ .  
 Base, buff.  
 Top, white.  
 Ribbon, white.  
 Price per dozen of 12 only, \$4.00.  
 Not less than  $\frac{1}{2}$  dozen sold.

### Style 405

Outside mounting,  $3\frac{3}{4} \times 11$ .  
 Any vertical picture,  $2 \times 3$ .  
 Base, white.  
 Cord, yellow.  
 Price per dozen of 12 only, \$4.00.  
 Not less than  $\frac{1}{2}$  dozen sold.

**Style 401**

Outside mount, 5 x 10.  
 Any horizontal blossom or landscape picture, 2 x 3.  
 Base, mottled green.  
 Top, white; ribbon, green; engraved sentiment:

*"All the year,"* etc.

Price per dozen of 12 only, \$4.00.  
 Not less than  $\frac{1}{2}$  dozen sold.

**Style 407**

Outside mounting, 5 x 10.  
 Any horizontal colonial picture, 2 x 3.  
 Base, mottled green; overlay, green.  
 Top, white; ribbon, green; engraved sentiment:

*"At our Door and on our Settle there is Welcome for you."*

Price per dozen of 12 only, \$4.00.  
 Not less than  $\frac{1}{2}$  dozen sold.

**Style 412**

Outside mounting,  $3\frac{3}{4}$  x 11.  
 Any vertical picture,  $1\frac{1}{2}$  x 4.  
 Base, cream; top, white.  
 Picture lining cream; white ribbon loop.  
 Engraved sentiment:

*"Let our Friendships."*

Price per dozen of 12 only, \$4.00.  
 Not less than  $\frac{1}{2}$  dozen sold.

**Style 415**

Outside mounting, 5 x 10.  
 Any horizontal picture, 2 x 3.  
 Base, light blue; top, white; ribbon, white; engraved sentiment:

*"Every Day."*

Price per dozen of 12 only, \$4.00.  
 Not less than  $\frac{1}{2}$  dozen sold.

**Style 428**

Outside mounting, 5 x 10.  
 Any vertical picture, 2 x 3.  
 Base, white; red and gold bordered overlay for picture.  
 Ribbon loop, white; sentiment pad engraved:

*"May many joys."*

Price per dozen of 12 only, \$4.00.  
 Not less than  $\frac{1}{2}$  dozen sold.

**Style 429**

Outside mounting,  $3\frac{3}{4}$  x 11.  
 Any vertical picture,  $1\frac{1}{2}$  x 4.  
 Back, gray; top, white; picture overlay, gray.  
 Ribbon loop, pink; engraved sentiment:

*"Let our Friendships."*

Price per dozen of 12 only, \$4.00.  
 Not less than  $\frac{1}{2}$  dozen sold.

**OTHER STYLES**

Any sentiment will be used to order if the customer defrays cost of engraving or sends a plate, which should be of large size. No other extra charge will be made on an order for a gross. Of course the sentiment must only occupy such space as is available on the style.

**CALENDARS BY FREIGHT**

We recommend that all calendar orders of any size be sent by freight. They are bulky because every one is in its particular box. Allow from one week to two months for the shipment to reach you, as freights are slow. Order in the winter or spring because only on early orders are we sure to be able to ship the cheapest way, and if the present increase in the business continues, fall orders will be almost impossible to fill in full.

**THE PRICE OF CALENDARS**

We do not urge orders on small calendars as there is no margin of profit for us in selling them. We can make cheaper calendars, but not for the price. Every print is in platinum and all are wholly colored by hand.

**Style 404**

Outside mounting, 5 x 10.  
 Any vertical picture, 2 x 3, in plate mark.  
 Base, white; overlay, light blue.  
 Top, white; ribbon, blue; *no sentiment*.  
 Price \$4.00 per dozen of 12.  
 Not less than  $\frac{1}{2}$  dozen sold.

**Style 134**

Outside mounting, 5 x 10.  
 Any vertical picture,  $2\frac{1}{2}$  x 5, in plate mark.  
 Base, lavender; top, white; ribbon, white; *no sentiment*.  
 Price \$6.00 per dozen of 12.  
 Not less than  $\frac{1}{4}$  dozen sold.

**Style 124**

Outside mounting,  $6\frac{1}{2}$  x 12.  
 Any vertical picture,  $3\frac{1}{4}$  x 4, in plate mark.  
 Base, buff; top, white; ribbon, white; *no sentiment*.  
 Price per dozen of 12, \$6.00.  
 Not less than  $\frac{1}{4}$  dozen sold.

**Style 284**

Outside mounting,  $7\frac{1}{2}$  x 14.  
 Any vertical picture, 3 x  $6\frac{5}{8}$ , in plate mark.  
 Base, white; overlay, gray; top, white.  
 Ribbon, pink; *no sentiment*.  
 Price per dozen of 13, \$9.00.

**Style 394**

Outside mounting,  $7\frac{1}{2}$  x 14.  
 Any vertical picture, 4 x 6, in plate mark.  
 Base, green; top, white; ribbon, green; *no sentiment*.  
 Price per dozen of 13, \$12.00.

**Style 398**

Outside mounting,  $8\frac{1}{2}$  x 14.  
 Any vertical picture, 4 x 6, in plate mark.  
 Base, white; overlay, cream; top, white.  
 Ribbon, yellow; engraved sentiment:

*“ Every Day  
 When your eyes rest here  
 Remember the love and loyalty  
 and kind good wishes  
 of one among  
 your host of friends.”*

Price per dozen of 13, \$12.00.

**Style 454**

Outside mounting 11 x 17.  
 Any horizontal picture, 5 x 7, on cream overlay.  
 Base, white; overlay, cream; top, white.  
 Ribbon, yellow; engraved sentiment, same as style above.  
 Price per dozen of 13, \$16.00.

**PLEASE OBSERVE**

Above, the five styles listed first have no sentiment. The calendar pad cover is engraved as in other styles.

**PLEASE DON'T BE ORIGINAL**

In respect to asking variations from the above styles buyers get into all sorts of vexatious difficulties and delays. Our styles in many cases are designed with sentiments to match a certain class of pictures. For instance, the styles “for birches only” cannot be used for other sorts of pictures. The verses only have meaning for birches. We have given this matter long and minute attention, and while we know other good styles could be designed we give enough for the utmost variety required by the largest buyer.

Another error buyers often make is in ordering picture numbers that are long vertically to be placed on styles designed for pictures that are long horizontally. It is obviously impossible to fill such an order. If the catalog is closely followed greater satisfaction will be given.



Style 419

Style 25

Style 410

Style 15

Style 414

**Style 25**

Outside mounting, 5 x 9.  
 Any picture, 3 $\frac{1}{4}$  x 4, mounted in  
 plate mark on engraved white  
 card, enclosed as shown above.  
 Price per dozen of 13, \$6.00.

**Style 15**

Outside mounting, 5 x 9.  
 Any picture, 3 $\frac{1}{4}$  x 4, mounted in  
 plate mark on engraved white card,  
 enclosed as shown above.  
 Price per dozen of 13, \$6.00.

**Style 419**

Outside mounting, 2 $\frac{1}{2}$  x 7 $\frac{1}{4}$ .  
 Blossom picture, 1 $\frac{1}{2}$  x 4, mounted  
 on green-and-gold-bordered card,  
 enclosed as shown above.  
 Price per dozen of 13, \$3.60.

**Style 410**

Outside mounting  $2\frac{1}{2} \times 7\frac{1}{4}$ .

Any landscape picture  $1\frac{1}{2} \times 4$ , mounted on engraved white card enclosed as Style 419.

Price per dozen of 13, \$3.60.

**Style 425**

Same as Style 410, except sentiment:

*" A Friendship that lasts  
Is a continual Thanksgiving."*

Any picture,  $1\frac{1}{2} \times 4$ .

**Style 414**

Same as Style 419, except sentiment:

*" An Easter Pledge."*

**Style 427**

Same as Style 410, except sentiment:

*" Let our friendships  
Be, not a pastime,  
But a prayer;  
Not for time,  
But for eternity."*

**Style 436**

Same as Style 410, except sentiment:

*" In the Spring  
A young man's fancy  
Lightly turns  
To thoughts of Love."*

TENNYSON.

**Booklet, Style 82**

Outside  $5 \times 6\frac{1}{4}$ .

Any horizontal  $3\frac{1}{4} \times 4$  picture.

Base, light blue.

Picture overlay, white; ribbon, blue.

Engraved insert:

*" On Christmas night  
The stars shine bright;  
On Christmas morn  
The Christ is born;  
A Christmas year!  
God's peace be near! "*

Price per dozen of 12, \$6.00.

**Style 438**

Same as Style 410, except sentiment:

*"Happy thoughts be yours  
Till twilight comes,  
Then happy dreams  
Till dawn!"*

**Style 435**

Same as Style 410, except sentiment:

*"Sweet day, so cool,  
So calm, so bright,  
The bridal of  
The earth and sky."*

HERBERT.

**Style 432**

Same as Style 410, except sentiment:

*"How dear to my Heart,"* etc.

**Style 42**

Same as Style 25, except sentiment:

*"Life's Mirror.  
Look for goodness look for gladness,  
You shall meet them all the while;  
If you bring a smiling visage  
To the glass, you meet a smile!"*

ALICE CARY.

**Style 48**

Same as Style 25, except sentiment:

*"A Christmas Aspiration.  
To hold dearest the worthiest  
To seek only what will last  
To know the best is yet unfolding  
And we shall see it in its glory."*

**Style 83**

Same as Style 25, except:

Blossom picture, mounted on green and gold bordered card. Sentiment:

*"An Easter Greeting.  
There are some plants which  
Bear blossoms and fruit all the year.  
I hope that may be your experience."*

**Style 506**

White Invitation Card,  $3\frac{3}{4} \times 5\frac{3}{4}$ , which reads:

*"M—— Requests the pleasure of your company,"* etc.

Enclosed in envelopes. Price, \$5.00 per hundred.

**Style 512**

White Gift Card,  $3\frac{3}{4} \times 5\frac{3}{4}$ , which reads:

*"My dear friend:*

*I am sending you a gift appropriate to this glad and hopeful season,  
a Wallace Nutting picture.*

*May its brightness help to cheer you through any sad or sombre days,  
and to enhance your pleasure when all goes well."*

Enclosed in envelopes. Price \$5.00 per hundred.

#### Style 46

Same as Style 25, except sentiment:

*"Greeting*

*I wish you comfort, joy and peace,  
And plenty of love and laughter;  
A heart of courage to face the world,  
And whatever is coming after."*

M. W. E.

#### Style 4

Same as Style 25, except sentiment.

Any vertical picture,  $2\frac{1}{2} \times 5$ .

Sentiment:

*"To My Mother*

*The joy be yours*

*Of reaping the rich fruit*

*Of many years of hope and prayer*

*In the life you have brought*

*Into the world."*

#### Style 29

Same as Style 25, except sentiment.

Vertical blossom or Landscape picture,  $2\frac{1}{2} \times 5$ .

Sentiment:

*"Easter*

*Forms of beauty and hope*

*Hid under snow and sod;*

*Ye heard the call of Love*

*And trembled upward to God!"*

#### Style 11

Same as Style 25, except sentiment.

Colonial pictures,  $3\frac{1}{4} \times 4$ .

Sentiment:

*"Stay, stay at home my heart and rest,  
Home keeping hearts are happiest;  
For they who wander they know not where,  
Are full of sorrow and full of care.  
To stay at home is best."*

LONGFELLOW.

#### Style 10

Same as Style 25, except sentiment.

Vertical Birch pictures only,  $2\frac{1}{2} \times 5$ .

Sentiment:

*"Silver White*

*As the birches light the woodland*

*Or over the brookside bend,*

*So through the year are interspersed*

*Bright memories of my friend."*

#### Style 21

Same as Style 10, except picture size,

Picture,  $3\frac{1}{4} \times 4$ .

#### Style 31

Same as Style 25, except sentiment.

Colonial picture,  $3\frac{1}{4} \times 4$ .

Sentiment:

*"My Christmas wish for you: At the  
close of every day's work a welcoming  
home and the joys of friendship;  
and I ask you to keep a little cosy  
corner in your heart for me."*

#### Style 80

Congratulation booklet.

Outside mounting,  $4 \times 8$ .

Any vertical colonial picture,  $2\frac{1}{2} \times 5$   
on first page in plate mark.

Base, white.

Engraved sentiment on cover.

Sentiment:

*"Congratulations*

*Two souls with but a single thought,*

*Two hearts that beat as one."*

Enclosed in white glazed box. Price  
\$6.00 per dozen of 13; not less  
than  $\frac{1}{4}$  dozen sold.





Where "framing only" or "frames only" is not specified, the prices include pictures and frames.

Frame 1, B size per gross, gilt	(5 x 7), \$125.00, not less than $\frac{1}{4}$ gross.
1, D " " " "	(7 x 9), 166.00, " " " $\frac{1}{4}$ "
1, K " " dozen, "	(8 x 12), 19.80, " " " 1 dozen.
1, R " " " "	(10 x 12), 21.60, " " " 1 "
2, R " " " green and gilt	(10 x 12), 21.60, " " " 1 "
3, R " " " gilt	(10 x 12), 21.60, " " " 1 "
3, A " " " " framing only	(11 x 14), 12.00, " " " 7 pictures.
3, A " " " " frames only (no glass)	(11 x 14), \$6.60, not less than 1 dozen.



- Frame 4, B size per gross, mahoganized (5 x 7), \$90.00, not less than  $\frac{1}{4}$  gross.
- 4, D " " " " (7 x 9), 127.00, " " "  $\frac{1}{4}$  "
- 5, D " " " gilt (7 x 9), 138.00, " " "  $\frac{1}{4}$  "
- 5, K " " dozen, " (8 x 12), 16.80, " " " 1 dozen.
- 5, R " " " " (10 x 12), 18.00, " " " 1 "
- 5, A " " " " for framing only (11 x 14), \$10.80, not less than 7 pictures.
- 5, A " " " frames only (no glass), gilt (11 x 14), \$5.40, not less than 1 dozen.
- 6, R " " " gold (10 x 12), \$26.00, not less than 1 dozen.
- 6, A " " " " for framing only (11 x 14), \$24.00, not less than 7 pictures.
- 6, A " " " frames only (no glass), gold (11 x 14), \$15.00, not less than 1 doz.



Frame 7, D size per gross, gold (7 x 9), \$130.00, not less than  $\frac{1}{4}$  gross.

7, K " " dozen, " (8 x 12), 26.00 " " " 1 dozen.

7, R " " " " (10 x 12), 28.00, " " " 1 "

7, R " " " frames only (no glass), gold (10 x 12), \$15.00, not less than 1 doz.

7, A " " " for framing only, " (11 x 14), 24.00, " " " 7 pict.

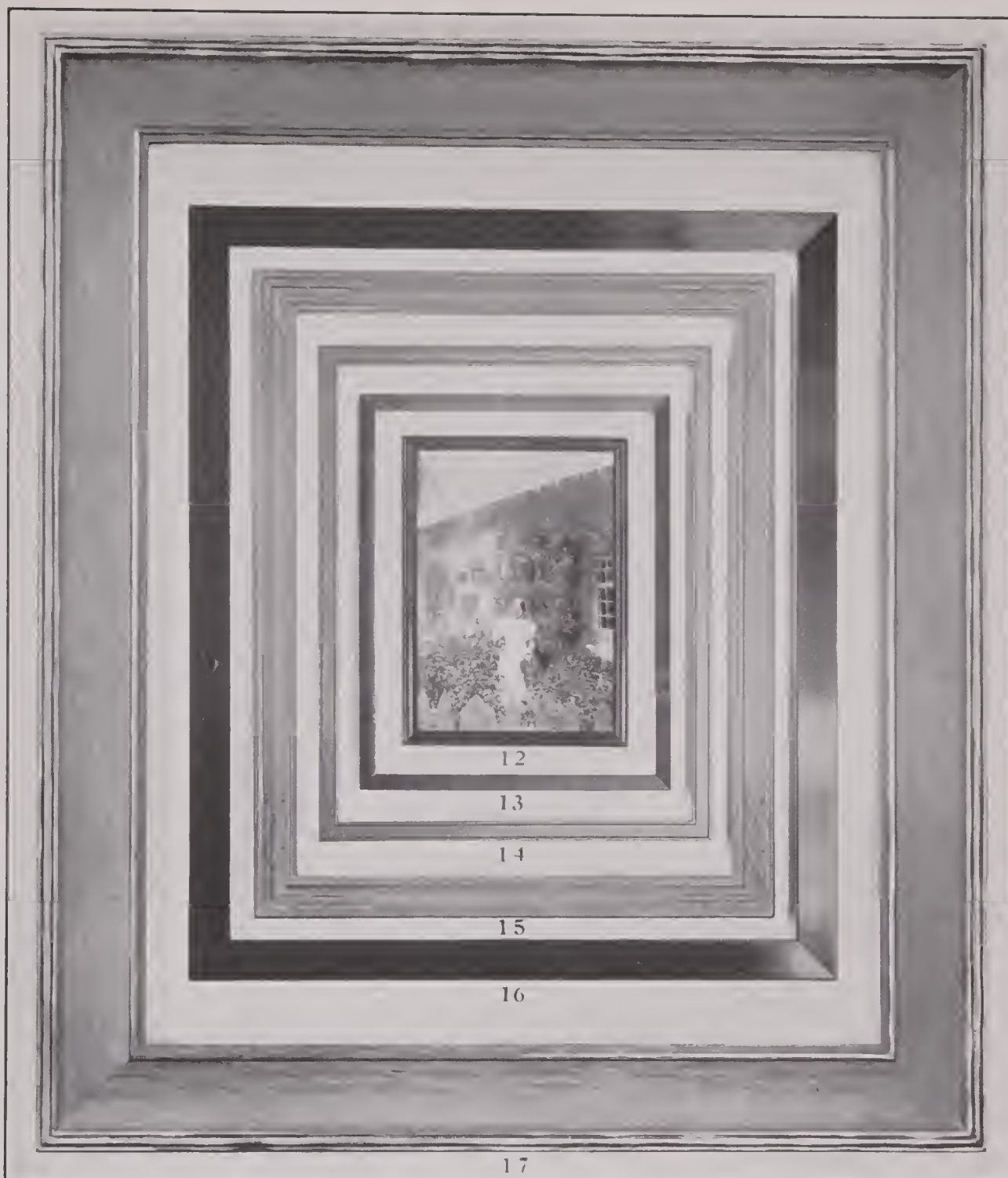
7, A " " " frames only (no glass), " (11 x 14), 15.00, " " " 1 doz.

8, A " " " for framing only, gilt (11 x 14), 11.00, " " " 7 pict.

8, A " " " frames only (no glass), " (11 x 14), 5.40, " " " 1 doz.



Frame 9, Q size per doz., mahogany, for framing only (11 x 17), \$20. not less than 7 pictures.								
9, Q	“	“	“	gold,	“	“	“	(11 x 17), 20. “ “ “ 7 “
9, Q	“	“	“	“	frames only (no glass)	(11 x 17),	14.	“ “ “ 1 doz.
9, S	“	“	“	“	or mah. for fram. only	(13 x 17).	21.	“ “ “ 7 pictures.
9, C	“	“	“	“	“ “ “ “ “	“ “	(14 x 17),	22. “ “ “ 7 “
10, A	“	“	“	mahogany, for framing only	(11 x 14),	15.	“ “ “ 7 “	
10, A	“	“	“	“	frames only (no glass)	(11 x 14),	11.	“ “ “ 1 doz.
10, Q	“	“	“	“	for framing only	(11 x 17),	17.	“ “ “ 7 pictures.
10, Q	“	“	“	“	frames only (no glass)	(11 x 17),	12.	“ “ “ 1 doz.
10, S or C	“	“	“	“	for framing only	(13 or 14 x 17),	18.	“ “ “ 7 pictures.
11, C	“	“	“	gold or mah. for framing only	(14 x 17),	33.	“ “ “ 7 pictures.	
11, O	“	“	“	“ “ “ “ “	“ “	(13 x 22),	38.	“ “ “ 7 pictures.



Frame 12, B size per gross, mahoganized	(5 x 7)	( $\frac{3}{8}$ in. wide)	\$83.33 <sup>1</sup> / <sub>3</sub>	not less than $\frac{1}{4}$ gross.
12, D " " " "	(7 x 9)	( $\frac{3}{8}$ " " )	120.00	" " " $\frac{1}{4}$ "
12, K " " dozen, " "	(8 x 12)	( $\frac{1}{2}$ " " )	15.00	" " " 1 dozen.
12, R " " " "	(10 x 12)	( $\frac{1}{2}$ " " )	16.80	" " " 1 "
13, B " " gross, mah. veneer	(5 x 7)	( $\frac{3}{8}$ " " )	90.00	" " " $\frac{1}{4}$ gross.
13, D " " " "	(7 x 9)	( $\frac{3}{8}$ " " )	127.20	" " " $\frac{1}{4}$ "
13, K " " dozen " "	(8 x 12)	( $\frac{1}{2}$ " " )	16.00	" " " 1 dozen.
13, R " " " "	(10 x 12)	( $\frac{1}{2}$ " " )	18.00	" " " 1 "
14, A " " " green and gilt, for framing only	(11 x 14)	( $\frac{1}{2}$ in. wide)	\$9.00	not less than 7 pict.
14, Q " " " " " " " " " "	(11 x 17)	( $\frac{3}{4}$ " " )	11.00	" " " 7 "
14, S or C size per dozen, green and gilt, for framing only	(13 or 14 x 17)	( $\frac{3}{4}$ or 1 in. wide)	\$12.00	not less than 7 pictures.
15, A size per dozen, gilt, for framing only	(11 x 14)	(1 in. wide)	\$45.00	not less than 7 pictures.
15, Q " " " " " " " " " "	(11 x 17)	(1 " " )	45.00	" " " 7 "
15, S or C size per dozen, gilt, for framing only	(13 or 14 x 17)	(1 $\frac{1}{2}$ in. wide)	\$55.00	not less than 7 p.
16, A size per dozen, mah. veneer, for framing only	(11 x 14)	( $\frac{1}{2}$ in. wide)	\$12.	not less than 7 pict.
16, Q " " " " " " " " " "	(11 x 17)	( $\frac{1}{2}$ " " )	14.	" " " 7 "
16, S or C size per doz., mah. veneer, for framing only	(13 or 14 x 17)	( $\frac{1}{2}$ in. wide)	\$15.	not less than 7 p.
16, O size per dozen, mah. veneer, for framing only	(13 x 22)	(1 in. wide)	\$20.	not less than 7 pict.
16, P " " " " " " " " " "	(15 x 22)	(1 $\frac{1}{2}$ " " )	24.	" " " 7 "
16, E " " " " " " " " " "	(18 x 22)	(1 $\frac{1}{2}$ " " )	25.	" " " 7 "
16, F " " " " " " " " " "	(22 x 28)	(2 " " )	3.	ea. including boxing.
17, E " per dozen, gold, " " " " " "	(18 x 22)	(2 $\frac{1}{2}$ " " )	60.	not less than 7 pict.
17, F " " " " " " " " " "	(22 x 28)	(2 $\frac{1}{2}$ " " )	6.	ea. including boxing.
17, G " " " " " " " " " "	(26 x 30)	(2 $\frac{1}{2}$ " " )	8.	ea. " "

## PLAIN MOUNTED PICTURES, B, D, K, R SIZES

These sizes are sold signed, not titled, thirteen for the price of twelve. Prices on page 5, at bottom.

### SUGGESTIONS FOR FRAMING

The frames of which we sell great quantities are in the sizes B, D, K and R. These sizes are not titled, but are signed. Frame No. 12 is the simplest sort of a narrow round-edge mahogany finish and the lowest price. No. 13 is a flat surface, handsome, light veneer, which, while it is called mahogany looks more like Circassian walnut. This is very tasteful and attractive, but costs a little more.

The larger sizes, A to E inclusive, are our regular line of signed and titled sheet pictures and it will be observed that the pictures are sold as heretofore for the same prices and the prices given here for frames are extra. If less than seven are ordered, add twenty-five cents for the boxing. As the sizes F and larger are not sold in sets we quote prices for each including the boxing.

If less than the quantity named on the B, D, K and R sizes is ordered, add twenty-five cents for the box. There is no charge for boxing if sold in the quantity mentioned.

### FRAMING VERY LARGE SIZES

We will quote prices for framing larger than the G size in the lists above, namely the H, J and W sizes, on request. The price will be twenty per cent. above the cost to us.

### TASTE IN FRAMING

We do not believe in framing water colors in any other styles than gold or mahogany, and we advise that the frames be narrow in proportion to the size of the picture; that is to say,  $\frac{3}{8}$  inches for B and D sizes,  $\frac{1}{2}$  inch for K, R and A sizes,  $\frac{3}{4}$  inch for Q size,  $\frac{3}{4}$  or 1 inch for S and C sizes, 1 inch for O and P, and 1 to  $1\frac{1}{2}$  inches for E sizes. Any attempt to make these pictures look like oil paintings is a mistake and contrary to the genius of the subject.

The above suggestion may be varied so far as to use a greenish gold.

The old-fashioned figure subjects look very well in a veneer. The gilt or gold frame may be placed in any room, but the mahogany is not appropriate for a parlor.

### FRAMES IN BOXES

A very nice way to ship frames, either with or without pictures, is in pasteboard boxes. We supply such boxes for our 5 x 7, 7 x 9, 8 x 12 and 10 x 12 gratis. All our shipments are made in such boxes which are white and glazed and intended for the display of the framed pictures and to be sold with the picture to the consumer. In the larger sizes, A, Q, S, C, O, P and E, we also supply the frames without extra charge in pasteboard boxes, but these boxes are merely protective and not glazed; that is to say, they have not the finish or solidity of the smaller boxes, and yet are very profitable for the dealer and consumer as they avoid the danger of unskillful packing to a great extent.













DOBBS BROS.  
LIBRARY BINDING

MAY 19  
ST. AUGUSTINE

FLA.  
32084



LIBRARY OF CONGRESS



0 003 401 334 2