

Historic, Archive Document

Do not assume content reflects current scientific knowledge, policies, or practices.

62.21

BERRY'S SEED FACTS AND BARGAIN CATALOG



FIELD
SEED
OUR
SPECIALTY

A.A. BERRY
SEED CO.
CLARINDA, IOWA

PURE
BRED
GRAIN
AND
GRASS
SEED

THE WORLD'S LARGEST SEED HOUSE
SELLING DIRECT TO THE FARMER

ECONOMY IN BUYING GRASS SEED

THE BEST IS THE CHEAPEST

Every normal man and woman wants to save money. When you buy an article you like to feel it is worth the money you paid for it. How can we tell whether we are making an economical purchase or not?

Let us take Grass Seed for example. When you buy seed you buy it for the crops you expect to get and not for a parlor ornament. The thing uppermost in your mind is the ultimate profit you will make from the crop you expect this seed to produce. It is results you are after.

The result will not depend on the seed alone. The condition of your soil and your poor seed bed, the climatic conditions and methods of seeding are all factors that control results. All of these factors may be ideal and still you may fail to get results if the seed you sow will not germinate or grows poorly.

A failure to obtain a stand means not only a loss of the price of the seed, but it means a waste of your labor and the loss of at least the full use of your land. With land and labor as high as it is, can you afford to take a chance on inferior seed? Cheap dead seed is really not so much lower in price than good seed. If you figure the cost per acre. Supposing it does make a difference of \$1.00 or \$2.00 per acre. Make it \$10.00 an acre if you please. It will not be over one or two but the point is you cannot afford to sow poor seed as a gift. Cheap seed further very frequently contains undesirable impurities that make it objectionable so that you find again the best seed is the safest to sow because it grows better and is cleaner.

But while most of you will agree that it pays to sow the best seed, there arises a question of

HOW DO YOU JUDGE QUALITY?

Strange as it may seem, fully 50 per cent of the people judge quality by the price. If the price is high they reason the quality must be high. This may sound alright, but it isn't alright because, for instance, there are many dealers whose best seed is not better than our Planet Grade and yet they have a price on it higher than our World Brand quality. If you judged by price alone, their seed would be the best, while, as a matter of fact it is more like our third best quality. Most seedsmen cannot sell seed as low as we can because they lack the buying power, the cleaning facilities and the storage capacity. They must ask higher prices and make bigger profits for the seed costs them more and their expenses are higher.

JUDGE QUALITY BY COMPARISON

Get samples from different seedsmen. Put them side by side. Then you can tell the difference. You can judge the quality by the brightness of the seed, the plumpness of the berry and the freedom from dirt and sticks and weeds. When you make such a comparison you will find that our World Brand is unexcelled. This quality is the cream of the crop. This is the grade we refer to as the best and cheapest seed to sow. This kind of seed is strictly extra fancy. It tests 99 per cent or better for purity and the germination is always above the government standard of germination on that particular seed. When you buy such seed you can positively know you are getting the best and our price list will show you that our prices are right.

WORLD BRAND QUALITY SELLING FAST

We bought heavily of extra Fancy seed early. We had the largest stock of World Brand seed in the history of our business. We still have nice supplies but it is going at an alarmingly rapid gait. If you need seed and want the most economical seed you can buy, order at once. Later you will have to take what is left. There are very few dealers now who can supply such extra fancy seed. See our price list. Get our samples. We can save you several dollars per bushel on most seeds. The longer you wait the more you will have to pay and the less you will get for your money.

ENDORSEMENTS OF QUALITY AND SERVICE

PROMINENT LAWYER FINDS OUR QUALITY FINE.

Iowa City, 12-23-19.

Dear Sirs:

I thank you for your letter and quotations on Clover seed and Sudan Grass seed.

Kindly send me your quotations on Alsike Clover seed, and as soon as I get that I will try and make up an order. That I would put it all in one order and that would save bother.

I have been buying now from you for five years and must say frankly that you have furnished a fine grade of seeds.

Yours truly,

S. K. Stevenson.

SEED AND GARDEN SEEDS PLEASE ALL.
Knox, Ind., 12-18-19.

Dear Sir:

We recommend your seeds first rate. Your Alsike and Timothy Mixed as hay and pasture seed. We also have a word to say that your Onion seed is great. Our neighbor bot a pound from us and he is a great truck farmer. That pound produced bigger and better shaped onions than his other onion seeds from different houses, so he is satisfied with your seeds also.

Yours truly,

James Christensen.

SEEDS TESTED OUT FINE
Kannan, Wis., 12-25-19.

Dear Sirs:

Enclosed and check for Alsike and Timothy mixed. Have been testing your seed out in this country and had a fine crop of hay this year.

Yours truly,

Ernest Schmidt.

BILLION DOLLAR GRASS MAKES BIG CROP
Werner, N. Dak., 10-30-19

Dear Sir:

I ordered \$100.00 of your Billion Dollar Grass last spring and got a very good crop for the season we had out here. I seeded a three acre piece on the 3rd day of June and cut it on the 3rd day of July and got six good tons off of it and also cut some off of it the second time.

Yours truly,

Arthur Jlehandler

CLOVER AND TIMOTHY MIXED DOES FINE
Conway, Mo., 11-15-19.

Dear Sir:

Enclosed you will find an order for some more seed. The Clover and Timothy I got last year is just doing fine and I want to sow some more. This is from the last list I got from you and I don't know if this is right or not. As I get my place cleaned up I want to sow every year. Hoping this is O. K., I remain,

Clarence A. Smith.

ALWAYS LIKE SAMPLE
Lucerne, Mo., 12-19-19.

Dear Sirs:

I have bought seed of you for some time and have been well pleased. Your seeds are the same as your samples. I have secured you some customers and think I can get you some more for several neighbors have asked me where I intend to get my seed. I tell them from Berrys.

Will need some Clover this spring but am awaiting for them to send with me.

Yours truly,

John L. Barkley.

BEST SEED EVER BOUGHT
Delhi, Ia., 5-20-19.

Gentlemen:

Your World Brand Alsike, Mammoth Clover, Timothy which I received and sowed this spring done fine, was the best seed I ever bought.

L. V. Sutton.

GOOD SEED, ARRIVED IN GOOD CONDITION
Harbor Beach, Mich., 12-20-19.

Dear Sirs:

I'm very pleased with the seed I have bought from you every year, also my father, Otto Dahlke, at that time as he was farming. I always received in it good shape and the weight was always net and correct in every way. So far I can say every kernel has come up and always a crop of hay I got each year from the kind I ordered.

I expect to buy my seed from you this year again. I hope that other farmers would try and just for a sample one year and I know they were all satisfied just as I am. A. A. Berry Seed Co. is the only one, that does a square deal with everybody.

Yours very truly,

Fred C. Dahlke

LIKES OUR SEED FACTS, BERRY'S SEEDS BEST EVER SOWN.
Mt. Clare, W. Va

Gentlemen:

I enjoy reading "Seed Facts," for it tells what kind of seed is the most profitable to sow and how much to the acre and it also tells you just what kind of seed you are getting.

It is the most interesting little book that I ever saw on seed facts.

I ordered Clover seed last spring from you people and I never saw a better crop of clover. I think that every seed grew. I received the best seed from you people that was ever sown around this country. I think that you will receive several orders from around here in the spring.

J. C. Conley.

ALSIKE AND TIMOTHY MAKES FINE HAY
Cohocton, N. Y., 11-22-19

Dear Sirs:

Please send sample of your Alsike and Timothy Mixed and your latest prices on same. I have used some of this mixed seed purchased from you and got very nice hay from it.

Yours truly,

Frank Strobel.

BERRY'S SEEDS OF SUPERIOR QUALITY
Barnesboro, Pa., Rt 1., 12-3-19.

Gentlemen:

I wish to call your attention to the matter that you will not forget to supply me with your spring prices on seeds as the grass seed you shipped me this year was far superior to any received in this section in price and quality. I will need some different kinds of seeds next spring so mail me your prices early.

Wm. L. Pennington.

BUMPER CROP FROM CLOVER & TIMOTHY
Burt, Ia., 12-3-19.

Dear Sir:

I am satisfied with your shipment last time and got a Bumper stand of Clover and Timothy.

Yours truly,

Geo. Dettman.

PERFECTLY SATISFIED

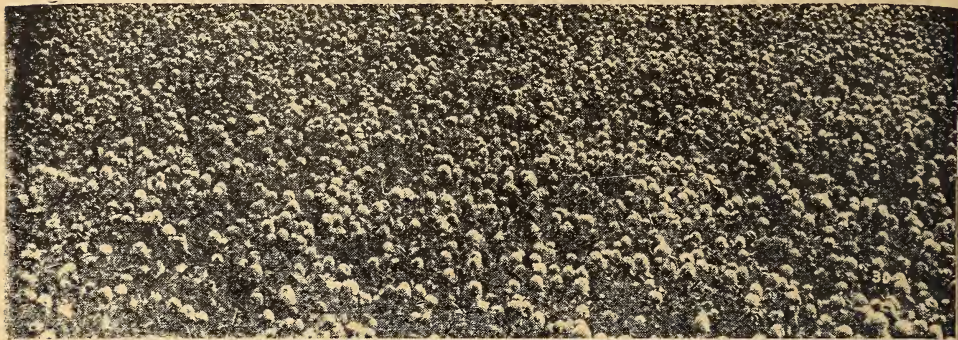
like ours from your seed. We have 8 acres in grass and had taken 12 loads off of it. It was so thick that it was all that two head could pull the mower thru. We got to get a different mower if we want a crop like that, so you can easily see it pays to use your seed. We have the soil here and we are taking care of it so we want to see if we cannot sell some of your seed in here.

I want some of your seed but there are some others want some so I will send the order all in next week. I wanted to before this but was waiting on the others, if not I will send my order at once.

Yours truly,

Morris Frederick.

A CROP THAT BRINGS MANY PROFITS



WHAT SHALL IT PROFIT A MAN

To save a few dollars per acre by not sowing Clover seed and by his failure to do so, injure the fertility and texture of his soil?

Clover supplies your soil with vegetable matter and with nitrogen. It makes the soil mellow and suitable to the best development of other crops. It makes possible a larger number of bacteria that live and work in the soil to improve it. Clover increases the water holding capacity of the soil. It keeps light soils from blowing and washing and keeps heavy soils from baking. It deepens the soil. It aids drainage. Furthermore, Clover produces the kind of feed that builds up bone, muscle and nerves. It contains the food that young stock must have to develop big strong frames on which you can later put fat. You cannot produce big heavy stock unless you first grow big strong body frames while they are young.

RED CLOVER

This is very properly called the corner stone of successful farming, especially in the corn belt section. You will find it on the land of practically every prosperous farmer. You do not find it on run down farms for if it were there the farm would not be run down. Clover makes rich soil and rich feed. It produces the most expensive fertilizer and the most expensive feed stuffs by taking it largely from the air. Why go and pay high prices for this fertilizer and feed when you can grow it much cheaper on your farm in the form of Red Clover.

Never in our history did we buy such immense quantities of high grade clover. We foresaw the shortage and bought early while it was to be had. Every pound was carefully and thoroly re-cleaned. Practically all of it World Brand Quality, the most economical brand of seed to sow.

But the demand has been greater that we anticipated. Our stocks have dwindled rapidly. We still have a few cars left of the fine seed. Buy it now. Hundreds of seed dealers are scouring the country for seed but they have to take what is left. The real nice seed is gone. Demand the best only. We can supply you with it at this time. You can save money by purchasing now and you get better seed than you will later on. Don't fail to sow Red Clover. You cannot afford to sow inferior seed. Let us serve you now.

ALSIKE CLOVER

This is one of the finest clovers for hay or pasture. It is a perennial. One seeding lasts for years. It is finer stemmed than Red Clover and is not covered with fine hairs like the Red Clover, consequently the hay is not dusty and is excellent for horses. Alsike matures the same

time Timothy does and therefore is an excellent clover to combine with Timothy either for hay or pasture.

Alsike Clover seed is much smaller seed than Red Clover. It takes only about half as many pounds per acre. The best farmers in our section always sow a pound or two of Alsike with Red Clover and this cuts down the amount of Red Clover accordingly. They do this not because they want to save on Red Clover but because they get better stands and results.

Alsike Clover will grow on nearly any kind of soil. It is easy to get a stand. It rarely ever winterkills. It is the finest clover in the world for wet lands. We have seen Alsike drive out slough grass. On up land it is good and it will grow on land too sour or acid for other clovers.

You should know the value of Alsike Clover. By the bushel it is fully as expensive as Red Clover but on account of light seeding it is more economical to sow.

Stocks of Alsike Clover are small this year. Dont hold up your order. There never was such a demand for Alsike. It is a money making crop. Let us have your order.

USE WORLD BRAND SEED

We have different grades of seed because some customers find the cheaper grades adapted to their requirements. The World Brand is the finest clover grown. Plump, re-cleaned, bright, heavy seed of high germination. It takes less seed per acre and produces finer stands.

Beware of imitations. Many dealers offer a grade equal to our Planet and call it the best. Demand strictly extra fancy stock. You get it always in our World Brand. Our most critical trade is always satisfied with our World Brand. Use it for economy's sake.

WISE INVESTMENTS BRING PROFITABLE RETURNS



SWEET CLOVER IS MORE THAN A SOIL BUILDER

This plant was first considered a weed. Its seeding was discouraged. Gradually men began to learn of its wonderful soil building properties. Experiments were made. It grew in popularity because of its sterling merit. Hundreds of thousands of acres of land have already been reclaimed by it. Millions of acres are still to be brot to renewed life by Sweet Clover, the magician of the soil. Friends, if your farm does not produce as it should, grow Sweet Clover, plow it under, the result will astound you. Sweet Clover actually changes a barren waste into a land overflowing with milk and honey. Yes, it is a soil builder, a wonderful soil builder. Men everywhere now recognize that fact. But it is much more than a soil builder.

SWEET CLOVER EXTRA FINE FEED

Some of you will have to be shown and you can be shown by listening to the word of others. If that doesn't satisfy you grow it yourself. Do that and you will find out for yourself that stock readily acquire a taste for it and then they are greedy for sweet clover. You will see with your own eyes that they will leave nearly all feed for sweet clover. If you pasture it you will discover that you can put double the amount of stock on it that you can on any other pasture. The appearance of your animals and the weights on your scales will prove that they are developing more rapidly than on any other pasture you may have. You will also see that there is not the tendency of Sweet Clover to bloat stock. We have never heard of a case. These have been the experiences of men who have grown Sweet Clover. They talk from experience and not from imagination. Facts talk to us louder than words and the facts are that Sweet Clover will do all the above for you while it is building up your soil.

You can cut it for hay while young and get hay that is fully equal to Alfalfa hay. The yields per acre are tremendous. You can also get a big money making seed crop if the season is not too wet. We have paid men as high as \$150.00 per acre for seed alone. Where can you beat it. For your farms sake and for the love of your pocket book—Grow Sweet Clover.

The white blossom is the most common type grown. It is a biennial and will live two years. The white is the best soil builder, makes the largest growth of all. In most cases it makes a hay crop the first year. The second year you get two hay crops or one hay and a seed crop. You can plow it under for fertilizer the first year if necessary altho the full root development does not occur till the second year. These roots are large and powerful and will break up heavy hard subsoils. It brings up plant food and aids soil drainage. These roots decay quickly and add tons of humus per acre as well as hundreds of pounds of nitrogen.

A pasture of White Blossom Sweet Clover is a big asset to any farmer having stock to feed. Your acreage need not be large and you should keep it pastured quite close to prevent it from becoming woody.

YELLOW BIENNIAL GOOD

The increasing demand for this variety is partially due to the fact that it makes a finer stemmed hay. It does not grow as tall as the white and is about two weeks earlier in maturing. You will also find it excellent for pasture. Many farmers who have grown both kinds say they prefer the yellow biennial over the white blossoms. Like the white it lives two years and then dies unless allowed to reseed itself.

We have provided an extra nice stock of this seed and still have enuf to fill prompt orders. Our values on this seed cannot be duplicated for we bought when the buying was right and can save you money on yellow blossom sweet clover. On the basis of quality our prices are from \$2.00 to \$4.00 below others. Let us prove it to you.

YELLOW ANNUAL

This grows only one year and is not as large as either of the two just mentioned. It is utilized for fertilizer and for pasture. We do not recommend it for hay as it requires a favorable season to make sufficient growth and even then is not as good for hay as the other two kinds. We have a fine cleaned lot of this seed but it is only a fraction of what we had a few weeks ago. Don't delay your order for sweet clover. Whichever variety you want. Order it now. We can save you the most money, right at this time.

CLOTHE YOUR FARM IN PURPLE ROBES



YOU CAN GROW ALFALFA, THE WONDER CROP

Royal purple—the color that for ages has been associated with riches and wealth. Dress your farm in purple. You can have acres of it and every acre so clothed will be richer and more powerful on account of it.

We are referring to the growing of Alfalfa on your farm. Alfalfa in bloom makes a sea of purple flowers, tinged with green. A beautiful sight in it self yet all the more attraction to you because of the wealth and prosperity it represents.

Your fields, clothed in purple are richer because of the value of the Alfalfa crop itself. They are rich because each acre is worth more in dollars and cents on the market than it was before Alfalfa grew there. Alfalfa is a soil builder and whenever you see Alfalfa growing you know that there lies a fertile farm.

Each acre is more powerful because it can produce bigger and better yields of other crops, that you may choose to plant after plowing Alfalfa.

Sow Alfalfa this year, the growing of Gold, and clothe your fields in purple.

ALFALFA SEEDS SCARCE

In our Western States where most of our Alfalfa seed is grown each year, there was a shortage of hay last season. Prices for Alfalfa hay were high and so, instead of cutting the second crop for seed as is usually done, it was cut for hay. The seed supply depended largely on the third crop. Conditions were unfavorable and the third crop was very light. In the north, the conditions were a little better although in some sections drought prevailed, as a result there is a very small supply of Alfalfa Seed. Good seed is very scarce. The wonder is that prices have not advanced to higher levels. Don't think we favor high prices. It doesn't make our normal profit any larger but means a heavier investment of money early in the season so as to have good seed on hand for our customers later on.

OUR BUYING POWER—YOUR ADVANTAGE

Without fail the better grade of seed always disappears from the market early. The early bird surely catches the worm when it comes to seed buying. Smaller dealers however do not have the Capital and buying organizations to secure the seed early in the season. They must

get it from wholesale houses as they need to pay big prices for it and even then often find difficulty in getting choice seed, especially later in the season.

We bought Alfalfa seed heavily early and secured extra select stock that has been carefully re-cleaned and put in shape to give the maximum results to the farmer sowing it. It is easy to get a good stand of Alfalfa but you should demand the best seed and take no chances. Judge values by comparing samples. First examine quality and then prices. We want you to see with your own eyes that you can save money by sending your order to us. Any order from you whether large or small will be appreciated and have our prompt and careful attention. Every order we ship will have our purity and germination test. You can see by the tag what you are getting. You may further test the seed or have it tested in any manner and at any place you wish. Take thirty days if necessary to prove our values. The point is that we want you to be perfectly satisfied. We not only want the quality to please you but you must be convinced you have saved money.

OUR PRICE RIGHT

We are so firmly convinced that our values on Alfalfa seed are the most attractive that we will be glad to let you put it to any test. Unless you can save money on high quality Alfalfa seed we do not feel entitled to your business. During the past three months orders for our Alfalfa seed have been extremely heavy which to us is convincing proof that no others offer equal quality at our low prices. If they did we wouldn't be getting the business. Let us save you money. Send us your order for Alfalfa seed now, while we still have the high grade stock to supply. Order our World Brand for extra fancy seed. Remember our seed must please you or it comes back at our expense and all money including transportation charges will be refunded to you.

GROW GOLD ON YOUR FARM

It is easy to get started with Alfalfa. If you want detailed information on handling the crop, write for our book, "The growing of Gold" written by our general manager Mr. Sinn. It's free. Clothe your acres in purple robes. Enjoy greater wealth. Start today by ordering your seed now. Don't delay and risk inferior seed or higher prices. Act Now.

WE GUARANTEE all seeds will reach you in good order.

THE EASIEST CHEAPEST HAY TO GROW



TENS OF THOUSANDS OF ACRES WILL BE SOWN THIS YEAR

When you consider the cost of labor and seed the preparation of seed bed, the ease of obtaining a stand, the adaptability of crops to different soils. Timothy is the easiest and cheapest hay you can grow. Not only is it easy to grow but it makes heavy crops of fine hay for which there is always a good market.

Timothy has been grown in this Country for a hundred years. It has shown itself adapted to all kinds of soils and has been successfully grown as far north as Alaska. It is very hardy and rarely winter kills. One seeding lasts for years and makes a fine permanent meadow.

TIMOTHY EASY TO GROW

In former years this crop was usually sown in the Fall but now we sell fully three fourths of our Timothy seed in the Spring. The best results are obtained by seeding with a crop of barley or Spring wheat or an early variety of Oats. The seed bed preparation is sufficient for the Timothy so you can figure that expense out. That is one reason why it is cheap to sow. Your crop should not be too heavy. About two thirds of a regular grain crop is best. A drill with a grass seed attachment is best for seeding. Otherwise it can be broadcast after seeding out and harrowed in lightly. If you are planning on a permanent meadow it is advisable to have your seed bed smooth as it helps in cutting and curing the hay crops. Sow Timothy as early in the season as you can.

SEEDING COST LOW

Timothy is the cheapest grass seed you can sow this year. You will note from our price list that the quotations are attractive and as a peck makes a good seeding the cost per acre is very low. You save further in that, you have no extra expense of preparing a seed bed and if you have a drill with a grass attachment there is no extra cost of seeding. You also have a grass that is practically sure to make a stand and it is permanent if you wish it so that the only expense you have is the cutting and handling of the hay crop. On the other hand Timothy fits admirably into rotations and it is found on practically every farm in the corn belt, either alone or in combination with Red or Alsike Clover.

GOOD SEED IMPORTANT

There is liable to be a lot of old seed of low germination put on the market this year. You should be exacting as to germination test. No matter how favorable everything may be, you cannot expect results from dead or weak seeds. We are located right in the heart of the greatest Timothy producing section in the World.

We are right on the ground floor where we can actually see the fields. We know the growers contract for the best seed and it costs us less to buy than dealers at a distance; these are important facts. In the first place we can secure the best lots. Because of our being right in the district. We can buy cheaper and also we save on freight.

WE CAN SAVE YOU MONEY

Several Eastern wholesale houses come to this section to buy. They are not in as good position to pick up select lots and because of distance and high priced buyers plus the freight they have to pay, the seed costs them more money. They ship the seed to their warehouse and re-sack it and sell to local dealers.

After they sell first to a smaller wholesaler who in turn sells to your dealer; your dealer eventually offers it to you. Each handling makes an extra profit you pay them all. Buy direct from us. We are headquarters for Timothy. Our seed is extra select. We bought it right and charge only one small profit.

QUALITY GUARANTEED

This year we bought heavily of Timothy seed. Every pound of this has been re-cleaned and graded. Some of it we have cleaned twice. When the seed buying season opened this winter we had one full floor of our Mammoth fire proof storage house loaded to the roof with right new seed.

If the demand for seed is any indication of the amount that will be sown we predict a very heavy acreage of Timothy this year. It further indicates that our value in Timothy seed is unapproachable. We have explained why we could offer better values and if you will get our samples you will see for yourself that we can save you a lot of money on high grade seed.

Don't wait till all the high grade seed is sold. Order now while it is to be had. Mail us your order today. We guarantee satisfaction and will save you money on Timothy seed.

EDITORIAL

BERRY'S SEED FACTS And Bargain Catalog

MARCH 1920

Published monthly during the planting and seeding months by the

A. A. BERRY SEED COMPANY
CLARINDA, IOWA

JOE FAASSEN—EDITOR

Terms—Gratis to all customers and friends.

GOOD WILL

This is one of the most valuable assets any business can have. A loss of Good Will leads to bankruptcy. A building up of Good Will means bigger business. It is your Good Will plus the Good Will of over two hundred thousand other farmers that has enabled the Berry Seed Company to develop into the World's Largest Mail Order Seed House. We want you to know that we appreciate and value it. We shall strive to retain your Good Will by supplying you at all times with seed that will bring profitable crops and by rendering service that will satisfy. This book in itself is a part of our service and we will be glad to give any personal service you may desire if you will but write us.

WORLD BRAND QUALITY

This grade of seed is the very best on the market. It is the purest, brightest, plumpest, highest germinating seed to be had. When you buy that brand you can absolutely depend on getting seed that will satisfy you no matter how critical you may be. It takes less of this seed per acre and you have the assurance of getting a clean stand. Isn't it worth a lot to know that you can depend on this when you order? No need to stop and write for samples. Just put World Brand on your order and get satisfaction. We still have a nice supply of World Brand Quality but it is going fast.

WORKING SIX MONTHS FOR YOU

You make out a seed order possibly once a year. It probably does not take you over ten minutes to make it up. You send it to us and it may not take us thirty minutes to handle it and ship your seed. Have you ever stopped to think that we worked for six months and invested over two million dollars in seeds in order that we might have ready for you the kind of seed you wanted and when you wanted it? Here they are assembled and cleaned and ready to sow. Our labors and our money have made this service possible to you. Of course, there are other large seed houses doing the same thing. The only difference is they first

sell a dealer and we sell you direct. If these services were abolished, where would the farmer with a surplus find a market? Where would the farmer wanting seed go and buy it? How could a million farmers wanting seed get in touch with the farmers having the kind of seed they would want to buy? It would be an unsettled condition. Prices would vary widely. Seed would not be re-cleaned or tested. The reliability of the seller could scarcely be known. You might have to write to farmers scattered all over the U. S. and yet fail to get what you wanted. The large seed houses are the usual methods of assembling and distributing seeds. Buy your seeds direct from us and save the extra dealers profits.

THE GREAT STABILIZING FORCE

The Farmers of America have always been to a large extent conservative. They do not allow themselves to be easily stirred to radical action. The events of the day do not have the disturbing influence on them that is so characteristic of hordes of city workers. They add to the wealth of the nation by really producing it from the soil. They are the main muscle and sinew of our daily life.

In these days of turmoil and strife we need their calm judgment to influence our national affairs. Brother farmers, let us exert every possible effort to do away with agitators that run rampant at this time. Let us choose men with backbone to represent us. Men who are real Americans. Politics be d---d. Give us men.

BEWARE FOREIGN CLOVER

Europe has some surplus clover, especially Italy. On account of the high values of the American dollar they can sell at a comparatively low price in our money and still get big prices in their money. They are selling every pound they can scoop up. The Eastern states especially, will be flooded with Italian Clover this year. It looks nice and can be sold below home grown seed.

Mr. Edgar J. Brown of the United States Department of Agriculture, says it is foolish to sow that Clover in this country. It is not acclimated and he warns against seeding it. So don't be fooled by low prices. Play safe. Order our World Brand Clover seed and you get the very cream of Minnesota, Iowa and Illinois grown clover seed. All home grown seed. The finest in the world. You are always safe with our World Brand Quality.

SPECIALS FOR MARCH

STRICTLY HIGH GRADE A NO. 1.

WHITE BLOSSOM SWEET CLOVER

This big money making crop should be on your farm. Its wonderful soil improving power: its tremendous value as a rich pasture; the excellence of its hay crop and its big cash value as a Seed crop all aid to building up of your wealth.

We have assembled an extra select lot of seed that cannot be surpassed in purity or germination. A lot that will please the most critical. This we offer to you as a special value under the name of

LOT PROLIFIC

RECLEANED—SCARIFIED—HIGH
GERMINATING

\$21.00 PER BU. OF 60 LBS. BAGS FREE

This is a lot of seed for you who demand the best. It means real economy to sow such seed. Takes less seed per acre. Gives maximum results. This stock is bright, plump and clean. The finest seed we have in our warehouse. Absolutely guaranteed to please you. None better in the world. Bought cleaned and graded especially for critical trade. It will pay you to sow this kind of Sweet Clover seed. We urge you to try it. Others are asking more money for seed like our Choice grade. This lot is a bargain because of its extra high quality. Results count. You can save money by using such seed. It means true economy to buy

LOT PROLIFIC AT \$21.00 PER BUSHEL

You get 100 per cent value

EXCEPTIONAL ALFALFA OFFER

CASH IN AND SAVE ON A BIG
VALUE.

The scarcity of Alfalfa seed has made it extremely difficult to secure. Early purchases fortunately enabled us to have sufficient seed of our regular grades to supply a normal demand. The demand however has been abnormally heavy and seed selling fast. Special bargains were not to be had. We were fortunate in finding a party pressed for cash who made an attractive offer on a good dependable lot of seed. We took it to pass on to you as a special bargain. We have called this

LOT GEM

97 PER CENT PURE—DODDER FREE
Priced at only \$19.80 per bu. bags free.

This is very nice seed. A Big Value. It is not as bright as our World Brand quality as it contains some brownish seeds. Unfavorable weather at threshing time caused it. The seed is of good germination. Its purity is good and we consider it a rare value.

This lot "Gem" is sold subject to your approval and any test you may want to put it to. Back it comes at our expense if you are not perfectly satisfied or convinced that you have saved money. You can buy Alfalfa seed to better advantage. Buy it now either for spring or fall seeding for remember there will be no new crop of Alfalfa seed until after fall seeding is past.

This Big Value will sell fast and if you want some don't delay.

ORDER LOT GEM

AT \$19.80 PER BU. TODAY

LOT GIANT

50 PER CENT CRIMSON CLOVER 50 PER CENT TIMOTHY
\$7.50 PER BUSHEL OF 45 LBS. BAGS FREE
NEW—CLEAN—DEPENDABLE SEED

In view of the high cost of most seeds, lot "Champion" should appeal to you as a mixture, exceedingly rich in clover at a very, very low cost.

Crimson Clover is an annual and will make its full and complete growth in one year. It grows about as large the first year as ordinary Red does the second year. This will give you the full crop of almost pure clover its first year. The Timothy being a perennial will make quite a large growth the first year and the second year should give you a good stand of pure Timothy. Here is a mixture that will produce a quick clover crop and being so exceedingly rich in clover will aid greatly towards building up your soil.

LOT GIANT AT \$7.50 PER BUSHEL

A CLOVER MIXTURE THAT SATISFIES



SAVE ON SEED AND GAIN IN YIELD OUR CLOVER, ALSIKE AND TIMOTHY MIXED WILL DO THE BUSINESS

This seed mixture is a great favorite for hay and pasture. The quality of the feed is excellent, the yields heavy. This mixture will yield more per acre than any one of the three sown separately. The Clovers grow between the Timothy making a solid mass of grass instead of a thin stand. The yield of the Timothy is scarcely reduced. In fact the clovers add to the fertility of the soil, enabling the Timothy to not only grow rapidly but it increases the protein content of this grass.

SOIL IMPROVER

This mixture will help the fertility and texture of your soil. The clovers work continually to take the nitrogen from the air and store it in your soil free of charge. At the same time they produce an abundance of muscle building food. The root system of this mixture is quite extensive and adds a large amount of humus to the soil when the crop is plowed under.

GOOD FOR PERMANENT SEEDING

This mixture consists of Medium Red Clover, Alsike Clover and Timothy. The Alsike and the Timothy are perennials. The Red Clover is a biennial and usually only lives two years. However this crop will reseed itself very readily and you can count on the clover getting heavier if you use the mixture for either pasture or meadow.

FOOD VALUE HIGH

The clovers in this mixture supply the protein that is so valuable as a feed and so urgently needed on every farm. By mixing with Timothy a properly balanced hay is secured. It is sufficiently rich in protein and yet contains enough roughage to make it a very fine feed. This is just as true of the mixture when used for pasture purposes.

COST OF SEEDING LOW

In these days of high prices you can fully appreciate an opportunity to save money without cutting down on results. The Clover, Alsike and Timothy mixed that we offer you is low priced because it was practically all thrashed mixed and we were able to buy to excellent advantage. To some lots we add clover so as to make the seed as uniform as possible. We clean and grade the seed carefully so as to make the seed absolutely satisfactory. Twelve pounds of seed make a good seeding.

Have you used our Clover, Alsike and Timothy? Have you to get started and offer a special.

LOT "FAVORITE"

**\$8.55 PER BU.—BAGS FREE
TESTS 98 PER CENT PURE**

This lot of seed is worth more to you when you judge results to be obtained. \$2.50 will cover the cost per acre. You cannot buy such a grade of seed elsewhere for the money. Examine the sample. It is just what we would ship. Note the liberal percent of clovers. Yet you buy it at prices very little above what others are asking for Timothy alone.

This is good, new live seed. Plenty of clover for practical purposes. The kind of seed that produces yields that make profits. Order it and save money on your seed bill. You must be absolutely satisfied with the seed when you get it and fully convinced that you have saved money. It comes back at our expense if you aren't and your money refunded promptly.

Our Clover, Alsike and Timothy is a
Big Value—A money maker
Get started this year

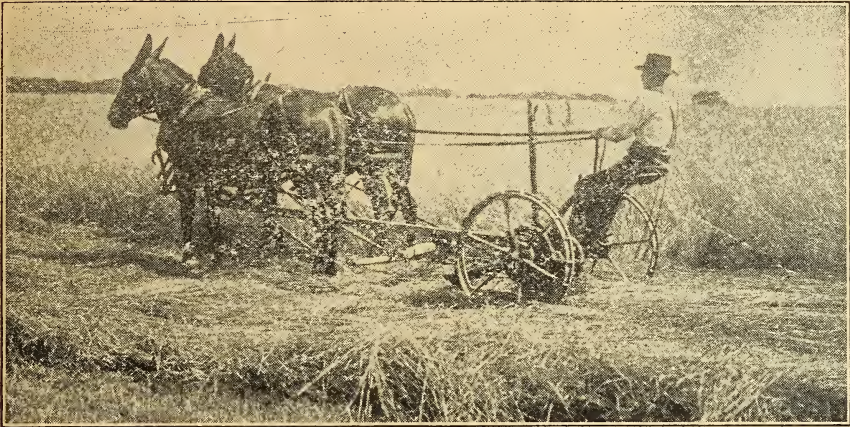
Order Lot Favorite

\$8.55 per bu.

Do It Now

Red Clover is high. Use lot "Favorite" Clover, Alsike and Timothy mixed. Reduce your seed bill almost 50 per cent. Increase your yield and profits.

THESE MIXTURES ARE WINNERS



ALSIKE & TIMOTHY MIXED

\$8.10 PER BU. BAGS FREE

These are both perennial crops. Mature at the same time. Make excellent hay. It is fine for horses as Alsike does not make a dusty hay. Is well adapted for pasture. It is easy to get a stand of this mixture. Can be sown with nurse crop of spring grain. Both Alsike and Timothy are very hardy and rarely ever winter kill.

The yields of Alsike and Timothy mixed are surprisingly heavy. The Alsike is not as coarse a Clover as the Red but it fills the space between the Timothy with rich nourishing feed. The high feeding value, the heavy yield, the quality of our seed and the low price we are able to make you, are the factors that combine to make Alsike and Timothy an extremely popular Grass Mixture.

Thoro cleaning and grading has put the seed in condition to please and satisfy all who use it. Every pound must show up the same. You have the final decision as to quality. You must be pleased. Our Alsike and Timothy mixed will please you. At the low price as given on the enclosed wholesale price list you can save money.

High Quality Stock at Low Prices.

Reduce your seed bill by using our Alsike & Timothy mixed this year.

RED CLOVER & TIMOTHY

\$9.00 PER BU. BAGS FREE

This mixture is an old standby with many farmers. They find that it is usually easier to get a stand of Red Clover in this way. Usually the Clover comes on very heavily in the following spring. It makes very heavy yields combined with Timothy. Your chances for failure are cut down. It is a profitable grass to grow.

You will note by the enclosed price list that our quotations are very low. Prices are but very little above that of pure Timothy. The results to be obtained are much greater. The Red Clover and Timothy seed that we have to offer you this year is fine seed stock. It has been thoroly cleaned and is of good germination. You will find it sound dependable seed. The percentage of Clover is just right for practical purposes. Will be glad to send you samples to show the exact quality. You must be satisfied with the seed when you get it. If you haven't time to write for sample—order anyhow. You take no chances. We can't afford to send out seed that doesn't satisfy. We take back all seed that doesn't please and refund all money paid. That puts it up to us to supply good quality and you will find our Clover and Timothy to come up to a standard that insures good results in the fields.

BONANZA MIXTURE

TEN REASONS WHY YOU SHOULD ORDER OUR BONANZA MIXTURE

\$10.50 PER BU. BAGS FREE

Here is a grass combination that is richer in Clovers. Fully forty per cent of this mixture consists of clovers of different kinds. All are combined and proportioned with view of obtaining the maximum results in the yielding qualities. Red Clover, Alsike, Sweet Clover and Alfalfa, together with the Timothy form a combination that gives tremendous yields.

- 1st. It is the best grass combination you can buy.
- 2nd. The cost of seed is very low compared with buying grass seed separately.
- 3rd. It is thoroughly re-cleaned and new seed of high germination.
- 4th. It rebuilds the soil while growing a big paying hay crop:
- 5th. It inoculates your land preparing it for Alfalfa.
- 6th. It produces one of the heaviest hay crops of any grass mixture we have ever sold.
- 7th. It is mixed in the right proportions, all ready to sow.
- 8th. It contains 40 per cent legume seed (Clovers) the nitrogen gathering crops that rebuild the land.
- 9th. It requires a less number of pounds of seed to sow an acre than any of the other grass mixtures.
- 10th. It should be used as it will Save You Money on the first cost of seed and Make you Money in the way of larger crops.

PRICE VERY LOW ONLY \$10.50 PER BU.

MULTIPLY YOUR PROFITS

GROW FIVE BLADES OF GRASS WHERE ONE GREW BEFORE



You can do it easily with Sudan Grass. That's why there is such a tremendous demand for the seed. Never in our lives have we seen a grass that became popular in so short a time. And its no wonder either for as a quick grower of heavy yields of excellent hay and forage it has all other crops, "backed off the map". Sudan is rapidly replacing Millet for it will grow anywhere Millet will grow. It grows quicker and makes much heavier yields. The forage or hay is palatable and nourishing. It is fully equal to Timothy in feeding value. Can be used as a pasture. The seed crop brings big returns. You can realize big profits from growing Sudan.

REPORT ON YIELDS

Sudan can be cut for hay from 40 to 50 days after it is sown. It takes from 60 to 70 days to mature the first seed crop. The next hay cutting can be made at intervals of about 30 days. You can easily see that it must be a rapid grower. It is also a prolific stooler. Sudan produces large amount of seed per acre. Some of the maximum yields reported are 18,000 lbs. or 9 tons of hay per acre and 1830 lbs. of seed. You can cut these yields in two and still have a big money making crop. Four and a half tons of hay that is equal to Timothy in feeding value is not a bad return or 915 lbs. of seed at as low a price as 10c per lb. would give quite a satisfactory return. Yet this is figuring on the basis of only one half of the returns that have been received. What crop can you sow that will make you money so quickly?

EASY TO GROW

If you get good germinating seed Sudan is as easy to grow as Corn. You should wait until the ground is thoroly warm in the spring. Corn planting time is correct. Better a little later than earlier. You cannot expect good results by sowing it on cold or very wet land. It takes warmth and moisture to get it started same as corn does. The best seed bed is one that is quite well settled and moderately fine. The seed is not so very large and therefore a coarse seed bed will hinder germination.

COST OF SEEDING LOW

There are two general methods of seeding Sudan. One is to drill in rows 18 to 36 inches apart. Two to four pounds of seed per acre will be sufficient. This method is especially recommended when the crop is grown especially for seed. Of course, good hay yields can also be obtained in this way. As a rule, however, for hay it is planted in close drill rows using 15 pounds of seed per acre. This will make a finer stemmed hay. By using 15 lbs. of seed per acre, the cost of seed will be less than \$2.75 per acre which is certainly a very low cost considering the big re-

turns the crop brings and the ease with which a good stand can be secured.

WAYS TO USE THE CROP

Sudan is chiefly utilized for either hay or seed crops. For hay it can be cut with a mower and cured like other hay. Many cut with a binder both for hay and seed as it is a little easier to handle the crop in this manner. You can pasture Sudan. It will take care of lots of stock. You can feed it green as a soiling crop. Sudan can also be used for ensilage either alone or with Soy Beans.

GREAT DROUGHT RESISTER

The remarkable yields of Sudan are caused on account of its quick growth and wonderful stooling properties. Another very important reason for its big yields is its extraordinary ability to resist drought. It is really almost miraculous to see it growing, green and luxuriant when the heat and drought of summer have withered other grasses. Then is the time you need feed and Sudan will produce it. It is right on the job thru the hot dry spell. If the drought is exceedingly long it may slow up a little but the first shower will revive it in a wonderful manner.

DEMAND GOOD SEED

It pays to use good, clean, live seed. You cannot expect the best results from thin shrivelled seed or seed that is light and chaffy. Further, be sure to get seed free from Johnson Grass as that is a very bothersome pest, especially in the southern states. It is difficult to tell the seed apart. Our stock is fine solid high germinating seed. It is all new crop and is guaranteed to be free from Johnson Grass. This is the kind of seed it will pay you to use. Don't take chances. You will find our prices low. We can save you money on Sudan Grass. Don't buy cheap seed. The difference on an acre will not be much. On a basis of quality our quotations are very low. Seed absolutely guaranteed to please. Order it now and be assured of getting A. No. 1 seed at a money saving price. See Red List for wholesale quotations. Bags are free.

ANGEL FOOD CAKE FOR HOGS

A CROP THAT MAKES PORK CHEAPLY

Of course, we don't mean to feed the critters honest-to-goodness cake, but stuff that tastes to them like that fluffy, creamy angel food cake tastes to most of us mortals here below. Only, the stuff we have in mind is much better for hogs than a lot of cake would be for us.



concentrates and pay big prices for it. Your young stock must have this food in order to develop rapidly to a large size. It is no use trying to put fat on a small framed animal. You can do it but you can't make money doing it. Give them the food to grow big frames and then put on the fat.

DON'T FEED RAPE ALONE

It's too rich in protein and not a properly balanced food. Feed them grain also, but not as much as ordinary. Rape will save from one-third to one-half of the grain you ordinarily feed. You can grow pork or mutton quicker with Rape and at a saving of \$3.00 to \$5.00 per hundred pounds. That means just so much extra profit. Rape pasture means bigger hogs, grown in less time at a lower cost to the grower. It's a crop no hog or sheep grower can afford to be without.

CHEAP SEEDING

It only takes 6 to 8 pounds of seed per acre when sown broadcast. You can seed it from early in the spring to mid summer. Can be pastured 6 to 8 weeks after seeding. You can seed it with oats or on oat field from two to three weeks after sowing the oats. The only objection to this is that oats will make the land too dry for rape in a dry season. Rape requires a moist and fairly rich soil for best results. Sow Rape in your corn at the last cultivation. You can pasture it very late in the year. Sow Rape alone for pasture. It's a cheap crop to sow but a valuable crop to have. Rape, Rape and more Rape for your farms will increase your profits.

GET GENUINE DWARF ESSEX SEED

Don't get the small growing Rape. It is practically worthless. The genuine Dwarf Essex gives the money making returns. Our seed is all new crop-clean, high germination. Our prices low. We can save you money. Send us your order. Get started this year with this money making Hog and Sheep pasture.
ORDER NOW.

It's Dwarf Essex Rape we have in mind for these hogs, and by the way, it's just as good for sheep and young cattle. We want you to know just why Rape pasture is so good for hogs and sheep especially. This crop analyzes very high in protein. The analyses differ on account of soil conditions and other factors but ranges from 20 to 37 per cent protein. We could safely figure them on 25 per cent or one fourth of the entire weight of the crop being protein. It is the protein that makes Rape so valuable. This is the feed that builds muscles, nerves and big body frames. You buy the feed in the form of con-

WESTERN GOLDEN MILLET

This is the true Golden Millet and should not be confused with the old German Millet which has recently been given the name of Golden. This variety is a heavy producer of seed and a very good yielder altho it does not grow as large as the German. It makes considerable more growth than the common millet and is very much superior to it.

FINE SEED STOCK

This year we have secured an extra fine stock of this seed at a figure that enables us to offer it to you at a very attractive price. This seed is without question the nicest brightest Millet seed we have ever offered and our price of \$2.50 per bu. bags free, makes this a money saving bargain. You can get a sample for the asking, but we can assure you that you will be perfectly satisfied with the stock in every way. If you are not we'll refund your money including freight charges.

GROW SOME OF THIS FINE MILLET

This variety makes a very fine nice millet hay. While there may not be quite so much to the acre you will profit by the finer quality and texture. It isn't always bulk that counts so much as quality and we are sure you will be greatly pleased with this fine genuine Golden Millet.

SEED SUPPLY LIMITED

The stock of this millet so far as it goes is of excellent quality. Just as fine a seed as grows, but we only had one car load in all and at our low price it is disappearing rapidly. This seed would be a bargain at fifty cents a bushel more than we are asking for it. Our low price will move this seed fast so please order promptly.

Sow some of this genuine Golden Millet this year. We are confident you will be greatly pleased with the profitable crop.

THERE'S MONEY IN GROWING THESE TWO SPRING GRAINS



SPRING RYE

FOR GRAIN OR PASTURE

Spring Rye is a crop that can be sown very early. It will grow on soils too poor to grow any other grains with profit. It will pay out on land that would not pay out on Oats, Wheat or Barley. It uses less plant food than other grains and is not so hard on the soil. Spring Rye is a great drought resister and the best grain crop for sandy land. The grain of spring Rye is almost identical to that of our Mammoth White Winter Rye. The plants, however do not grow as large. **VERY VALUABLE FOR EARLY HAY OR**

PASTURE

The early pasture problem is frequently a very serious one for many farmers. We can recommend nothing finer than a Spring Rye or a combination of Canadian Field Peas and Rye. Both can be sown early and together they form a very fine feed. This combination can be pastured early or you can wait and let it get fully ripe and then let stand for ten days to ten weeks to soften the beards and then turn hogs on to it. You will find this an economical method of fattening hogs.

Should you desire to pasture early you can begin after the Rye is four inches high. It grows rapidly and will take care of a lot of stock.

Spring Rye makes good hay if cut when the beards begin to appear. The best way to handle is to cut with a binder. In an ordinary season you will get considerable pasture after a hay crop.

Whether for Hay, Pasture, or Grain you will find Spring Rye a fine spring grain crop. For light soils or poor soils there is no grain crop to equal it. The demand for Spring Rye is growing rapidly each year. Many farmers report selling their grain crop for seed in their neighborhood for the first two seasons. We have only a moderate supply of seed left. It is all fine, first class seed stock. Such seed you will be proud to sow. Get your seed now if you can use such a crop. We will have to refund on lots of orders.

The seed stock that we have at this time is extra nice but we will not have enough to go around so please order at once.

CHAMPION BEARDLESS

OUR MOST POPULAR BARLEY

There are good reasons for the heavy demand we are having for this variety. In the first place it has consistently proven to be the best yielder in most sections. In the second place it is so much nicer to handle than the bearded type and being beardless the straw can be used to better advantage.

We carry the White Hull-less which has neither beards nor hulls. The Blue Hull-less has beards but no hulls. The Oderbrucker and Manshury have both beards and hulls. The Champion Beardless has hulls but no beards.

The heavy yielding qualities are no doubt chiefly responsible for the endorsement this variety is receiving from farmers. Harvests of 40 to 50 bushels per acre are frequently reported. This barley, being high in feeding value, brings a good return of rich food for every acre planted to the crop. As a hog food its value can scarcely be over estimated. The straw has considerable feeding value and can be used to good advantage on account of being beardless. It is much more pleasant to handle this grain and is much easier to thresh.

Champion Beardless Barley makes a fine hay when cut in the milk state. It is rich and palatable.

You will find Champion Beardless an early variety. We have had our barley in the shock by July 4th. Its earliness helps it withstand insects and diseases better than later maturing types. The straw is stiff and it does not lodge easily. You can sow this Barley very early. Light frost will not hurt it. Two bushels per acre makes a good seeding.

Champion Beardless Barley is the best nurse crop you can grow with Alfalfa or any grass. It does not make as much shade or use as much water as many spring grain crops and gets out of the way as a rule before the very hot dry weather starts.

You will be proud of a field of this barley and will find good profit in it.

NAME AND ADDRESS HERE

From _____

PUT A
TWO
CENT
STAMP
HERE

Our \$1.00 Collection Beats the World.

A. A. BERRY SEED Co.,

The World's Largest Mail Order Seed House

CLARINDA,

IOWA.

Take advantage of our big bargain offers. Special values in each lot. No seed held at these low prices. Save money by acting promptly. SEND THIS IN TODAY.

**Our Seed Facts are Brim Full of
SPECIAL VALUES**

Send in Your Orders

Market Gardeners

Can save Money and get Guaranteed Seeds from us.

**Seed Corn and Seed of All Kinds
Equal to any grown and lower in Price.**

**Read our Seed Facts and Bargain Catalog Thru
There is much Valuable Information and Rare Bargains in it.
CHUCK FULL OF THEM!**

DO NOT USE ABOVE BLANK SPACE

ESTABLISHED 1897

CAPITAL 300,000.00

INCORPORATED 1905

ORDER SHEET. USE IT.

A. A. BERRY SEED COMPANY

Clarinda, Iowa.

Write your Name and Address plainly, and follow instructions on page 9 of Catalog

DATE..... DATE..... AMOUNT ENCLOSED

Name Cash \$

Post Office..... P. O. Order.....

Rural Route..... State Express Order.....

County..... Check

Ship to..... Draft.....

(NAME OF TOWN) Stamps.....

Please Ship by Total

Please state whether Seeds are to be shipped by Mail, Express or Freight. The buyer pays the freight and express charges unless otherwise stated in catalog. Freight rates found on page 4 of catalog. **WE PAY THE POSTAGE ON ALL PACKETS, OUNCES OR POUNDS, UNLESS OTHERWISE STATED.** We give the post paid prices after each article in the catalog. Prices on larger amounts will be found on Price List. If you do not have our late price list, drop us a card and we will send it promptly. We pay all postage or express on collections. If more order sheets are wanted we will take pleasure in sending them. If another catalog is wanted, ask for one and we will send it. **It is easy to order seed by mail.** All you have to do is to make out a list of seeds wanted, attach the price to each and remit by Express Order, Postoffice Order, Draft or Money by Registered Letter.

YOUR MONEY'S WORTH OR YOUR MONEY BACK.

IF YOU WISH PART OF SHIPMENT BY MAIL AND PART BY FREIGHT, BE EXPLICIT

QUANTITY	ARTICLES WANTED	DOLLARS	CTS

No difference how often you have written us, always give your FULL ADDRESS, write your Name, Post Office county and state very plainly. By so doing you will save us trouble and possible delay in filling your order

YOUR LAST CHANCE THIS YEAR TO GET BERRY'S GREAT NORTHERN OATS



It is evident from the number of letters we are receiving from our customers that good heavy seed Oats are very scarce. When we offered our New Great Northern Oats in December we decided to let go only of a small amount to get the seed started in different sections of the country. There have come so many calls from all over for these Oats that we have finally concluded to let one more carload go. It won't fill all orders we know but first come first served on this last offer.

GREAT NORTHERN

A HEAVY WHITE OAT

This oat was quite fully described in our December Seed Facts but some of you may not have received it so we will restate a few of the facts of this remarkable heavy yielding variety. It is a large heavy and rather late maturing type. We cannot recommend it to those wanting an early maturing oat. The kernels are large and higher in feeding value because the proportion of hulls to the bushel is less in a big oat than a small one and the percentage of meat is correspondingly heavier. It has been our aim to produce a big fat meaty Oat and we have obtained our object. Last year was an unfavorable year for Oats and still we were successful in producing an Oat like the one you will find in the sample.

HEAVY YIELDS IMPORTANT

This Oat as stated in our December Seed Facts was developed from our Canadian Grown Regenerated Swedish Select Oats. This Oat has weighed out as heavy as 50 pounds to the bushel and produced up to one hundred and forty four bushels per acre. The Oat resembles the Swedish select only is a heavier Oat. The straw is stiff. It does not lodge easily. Head is large and spreading. It has remarkable stooling properties which is probably as much responsible for the large yields as is the size of the kernel.

ALL NORTHERN GROWN STOCK

This seed has been grown for us with care on selected fields. Most of our stock was grown in Canada. All of it is thoroly re-cleaned. We will send a sample on request. This is a kind of seed you must have to build up heavy yields. You cannot expect maximum results from seed that is small or shriveled or run out. You must have a well developed strain and these Great Northern

Oats certainly leave nothing to be desired. The man who is looking for an extra heavy yielding Oat will find it in the new Stock.

SELL AT A PREMIUM

Heavy Oats such as these are always in great demand because they are worth more for feeding as well as for manufactured Oat foods. You can almost always get a stiff premium for them. For the first few years however you should be able to get considerably over the market for them as we are confident you will find your first crop in great demand for seed purposes. This heaviest of all our Oats cannot help but please and we want to see this seed grown in as many States as possible.

ONLY ONE CARLOAD TO GO

This is more than we really care to spare. In a way this may seem like a lot and still take it over this Country it is but a drop in the bucket. It will seed a good many acres however and would like to see a little of it grown in your section. You will have to order early friends, so please don't hold up your order.

We are selling this new Oat at prices very little above our other types of heavy Oats and considering that the seed supply is scarce and being offered for the first time we are sure you will find the following prices attractive.

25 bu.	10 bu.	1 bu.
per bu.	per bu.	
\$1.75	\$1.80	\$1.90

These quotations include bags free of charge. Seed guaranteed like sample. It must please you or come back at our expense.

For the heaviest white Oat offered, order Berry's.

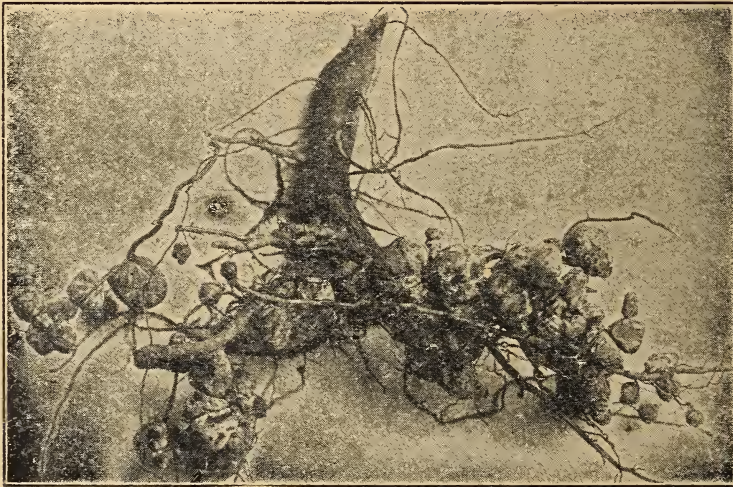
GREAT NORTHERN

First come First served Order up

SUCCESSFUL INOCULATION GUARANTEED

BERRY'S SUPERIOR NODULE GERM ABSOLUTELY GUARANTEED TO PUT NODULES ON THE ROOTS OF YOUR LEGUME PLANT YOUR MONEY BACK IF IT FAILS

This is the strongest and in so far as we know the only absolutely guaranteed placed on commercial culture for inoculating legumes. We have a culture for inoculation that we are not afraid to back up. We will take the chances. No risk on your part.



INOCULATION NECESSARY

Most of you know that legume crops such as clovers, alfalfa, peas, beans and vetches cannot enrich your soil with nitrogen unless there are nodules on the roots of these plants. These nodules are made by certain bacteria. They penetrate the roots and form lumps and nodules and it is only when these nodules are present that your plants can draw the free nitrogen from the air and deposit it in the soil.

BACTERIA MUST BE PRESENT

In case your soil does not contain the right kind of bacteria you must put them there by some method. Some get soil from fields that are growing this crop and scatter it on the land. This is a lot of work and brings the danger of weeds from other fields.

The pure culture method is the use of our Superior Nodule. It comes in bottles of different sizes. It is a jelly-like stuff in the bottom of the bottle. It is dissolved and diluted and applied to the seed. You can do it quickly and easily and if you will follow these simple directions we will guarantee you nodules on your plants.

DIRECTIONS

Take the bottle and add the amount of sugar that is specified on the directions that accompany each bottle. Add enuf water to fill the bottle about two thirds full. Shake and stir till the jelly-like mass is thoroly dissolved. Then pour it into a basin or jar containing enuf water to moisten (not soak) the amount of seed you are going to use. Stir the seed thoroly so that every seed is moistened. Then dry in the shade until the seed is dry enuf to feed thru a drill. Sow it towards evening or on a cloudy day for the sun's rays kill the bacteria. If sown broadcast harrow it promptly so the seed will be covered and protected.

EASY AND SIMPLE WORK

There is nothing hard to it. Just follow the directions. They are clear and definite. No complications to confuse or cause misunderstandings. Do this and we will guarantee a production of nodules or your money back. There is one thing to bear in mind and that is that acid or sour land will kill these bacteria and prevent successful inoculation. But if you have sweet soil you get either the nodules or your money. You take no risk.

AMOUNT OF NODULE GERM NECESSARY

Berry's Superior Nodule germ comes put up in sizes of $\frac{1}{2}$ acre, 1 acre, 5 acres and 10 acres. We usually figure 4 to 5 acres for every bushel of Clover or Alfalfa seed and 1 to 2 acres for every bushel of peas or beans.

Prices range as follows:

$\frac{1}{2}$ acre	\$.50
1	"	1.00
5	"	4.00
10	"	7.50
20	"	14.00

Be sure to specify just what crop you want the nodule germ for as it takes a different kind of bacteria or nodule germ for nearly every different kind.

Please bear in mind that Nodule Germ does not aid germination but only works after the seeds have started to grow. Therefore, if on account of unfavorable weather conditions or some other reason you should fail to get a stand then the guarantee will not apply as the nodule germ cannot work unless you get a stand.

However in every case where a stand is secured we positively guarantee to bring about successful inoculation with Berry's Superior Nodule Germ when used according to directions on land that is not acid or sour.

BERRY'S SUPERIOR NODULE GERM DOES THE BUSINESS