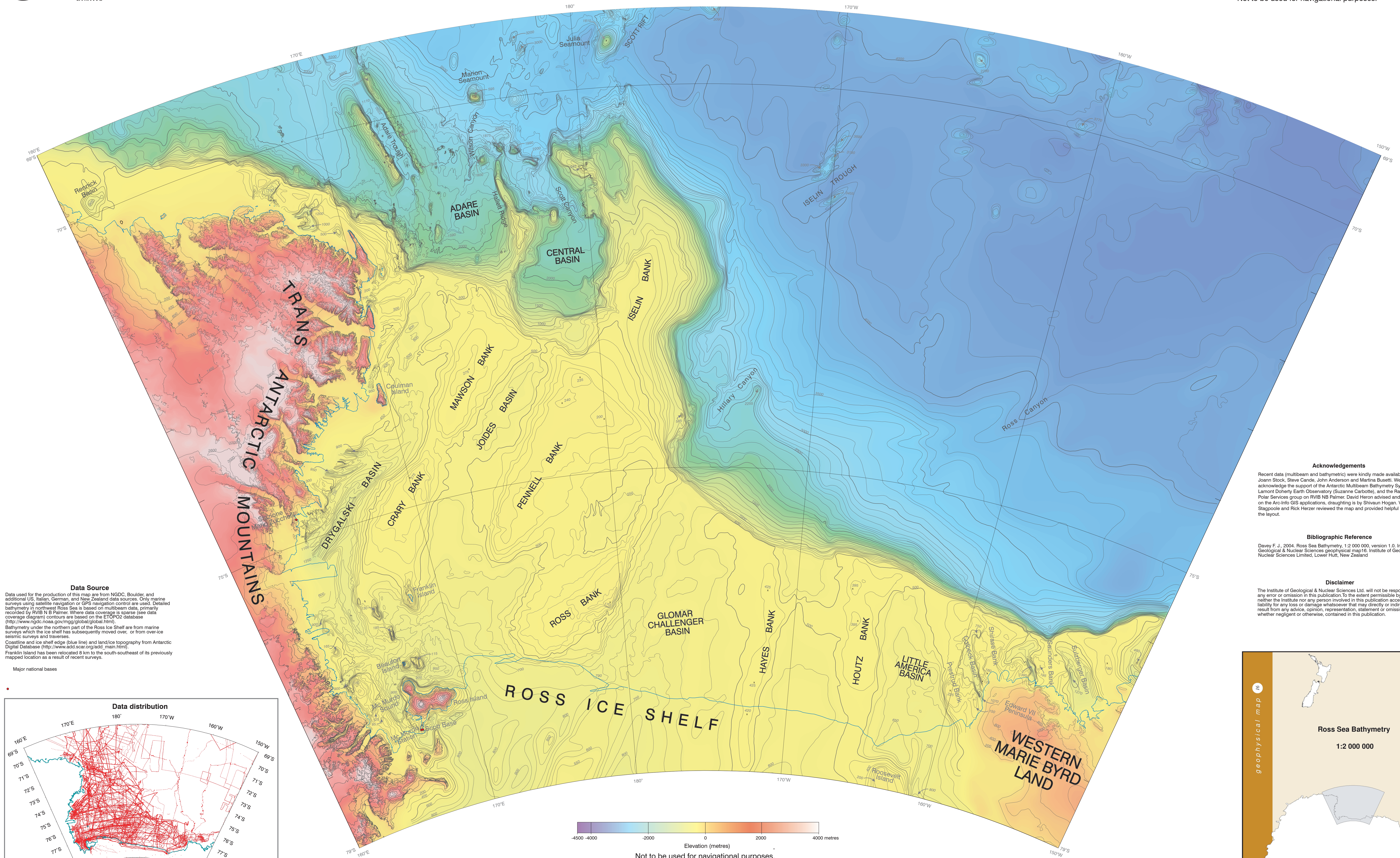


Ross Sea Bathymetry

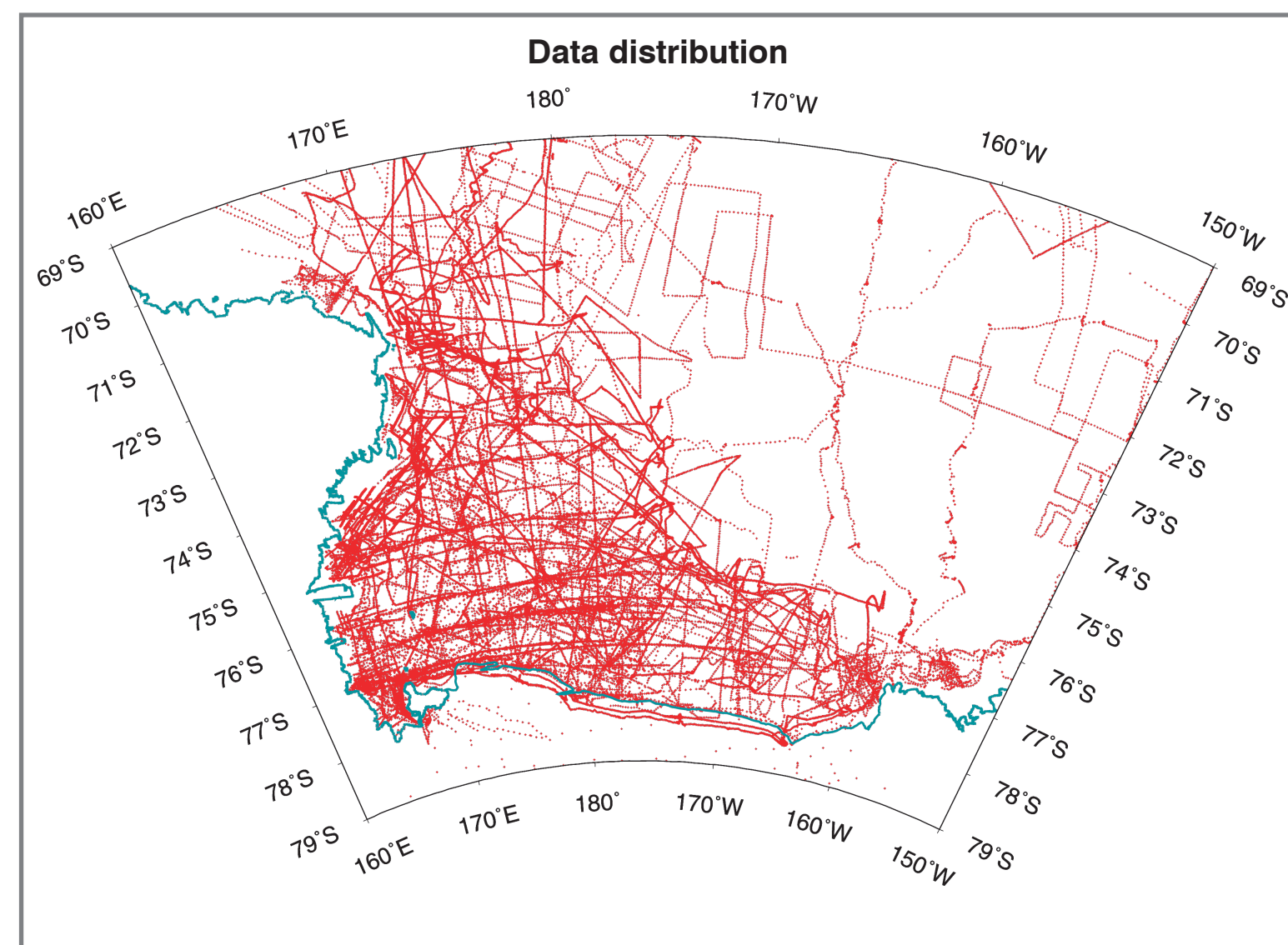
Polar Stereographic projection, Scale 1:2,000,000 at 71° S

Not to be used for navigational purposes.

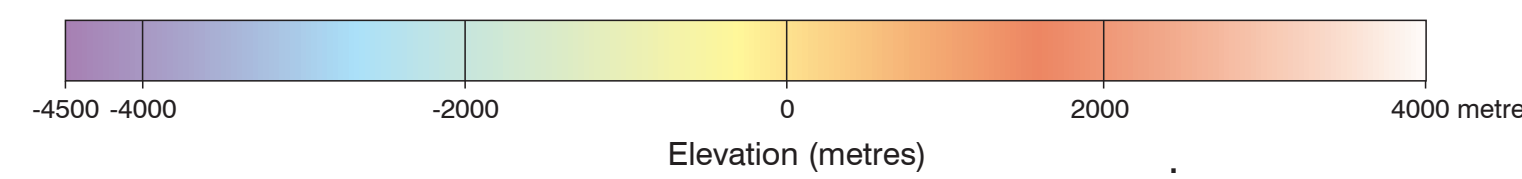


Data Source
Data used for the production of this map are from NGDC, Boulder, and additional US, Italian, German, and New Zealand data sources. Only marine surveys using satellite navigation or GPS navigation control are used. Detailed bathymetry in northwest Ross Sea is based on multibeam data, primarily recorded by RVIB N S Palmer. Where data coverage is sparse (see data coverage diagram) contours are based on the ETOPO2 database (<http://www.ngdc.noaa.gov/mgg/global/global.html>). Bathymetry under the northern part of the Ross Ice Shelf are from marine surveys which the ice shelf has subsequently moved over, or from over-ice seismic surveys and traverses. Coastline and ice shelf edge (blue line) and land ice topography from Antarctic Digital Database (http://www.add.coa.gov/adc_main.html). Franklin Island has been relocated 8 km to the south-southeast of its previously mapped location as a result of recent surveys.

Major national bases



Bathymetry compiled by F. J. Davey.



Not to be used for navigational purposes.

Contours shown are in corrected metres (based on Carter's Tables (1987) or velocity profiles based on XBT data where available). Contours are at 50m intervals on the shelf and 100m intervals in deeper water. Not all contours are shown in areas of steep topography.
• Spot depth.

Acknowledgements

Recent data (multibeam and bathymetric) were kindly made available by Joann Stock, Steve Canale, John Anderson and Martina Busetti. We acknowledge the support of the Antarctic Multibeam Bathymetry Synthesis at Lamont-Doherty Earth Observatory (Suzanne Carbotte), and the Raytheon Polar Services group on RVIB N S Palmer. David Heron advised and assisted on the Arc-Info GIS applications, draughting is by Shivers Hogan, Vaughan Stagpoole and Rick Herzer reviewed the map and provided helpful advice on the layout.

Bibliographic Reference

Davey F. J. 2004. Ross Sea Bathymetry, 1:2 000 000 version 1.0. Institute of Geological & Nuclear Sciences geophysical map 16. Institute of Geological & Nuclear Sciences Limited, Lower Hutt, New Zealand

Disclaimer

The Institute of Geological & Nuclear Sciences Ltd. will not be responsible for any error or omission in this publication. To the extent permissible by law neither the Institute nor any person involved in this publication accepts any liability for any loss or damage whatsoever that may directly or indirectly result from any advice, opinion, representation, statement or omission, whether negligent or otherwise, contained in this publication.

