



Introduction to Wikidata

User:Ranjithsiji

Wikimedians of Kerala User Group

[w.wiki/t9](https://www.wikidata.org/wiki/t9)





<https://commons.wikimedia.org/wiki/File:JimmyWalesJI5.jpg>

Imagine a world in which every single person on the planet is given free access to the sum of all human knowledge. That's what we're doing

– Jimmy Wales
(https://en.wikiquote.org/wiki/Jimmy_Wales#Quotes)

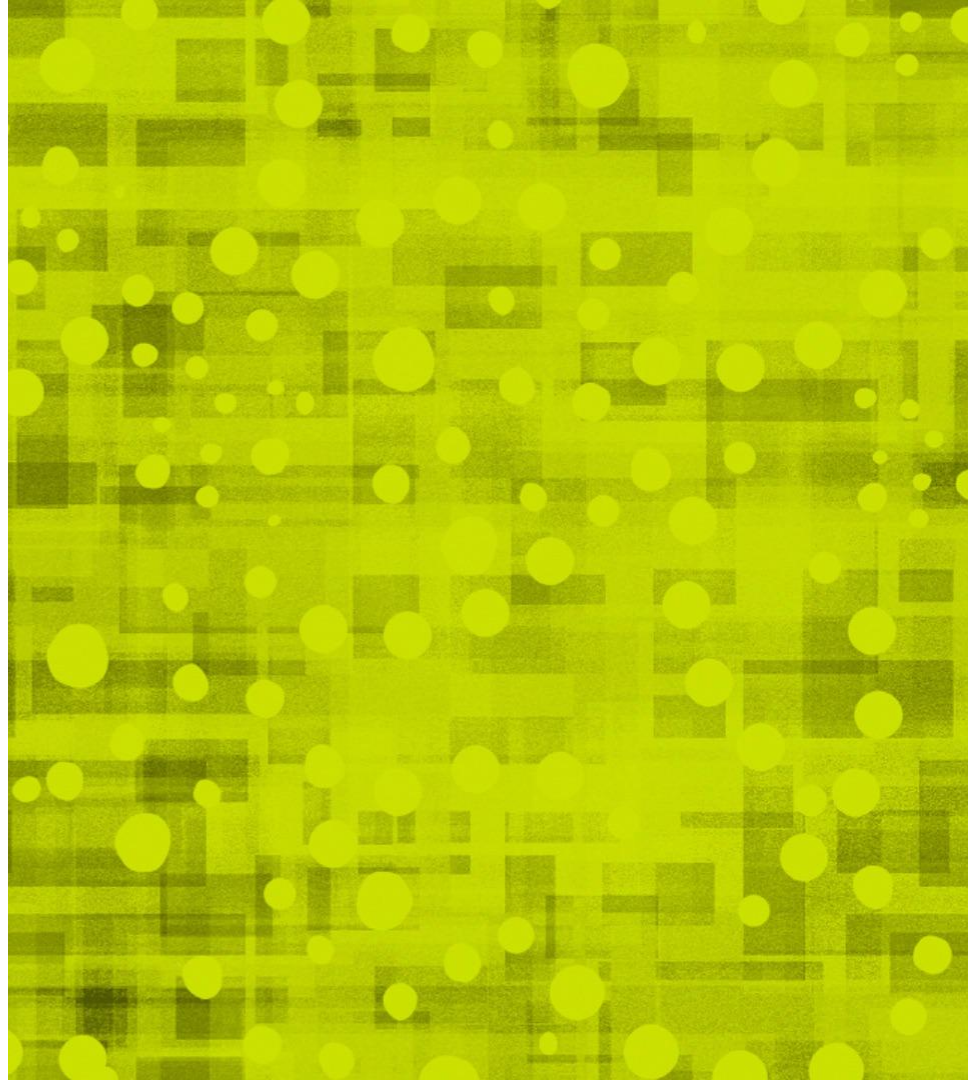
Data

Collection of Information
a set of values of subjects



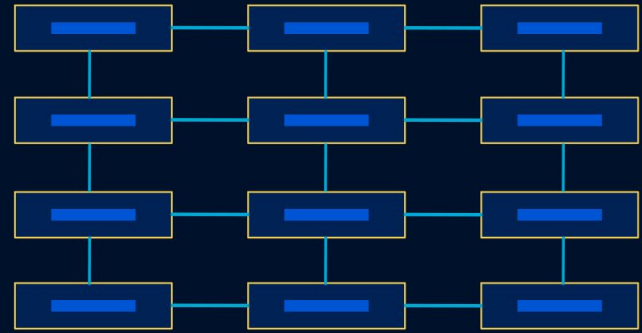
Unstructured Data

- Text -> Article, Poem, Script, Storyboard
- Images
- Audio,
- Video
- Smell, Taste



Structured Data

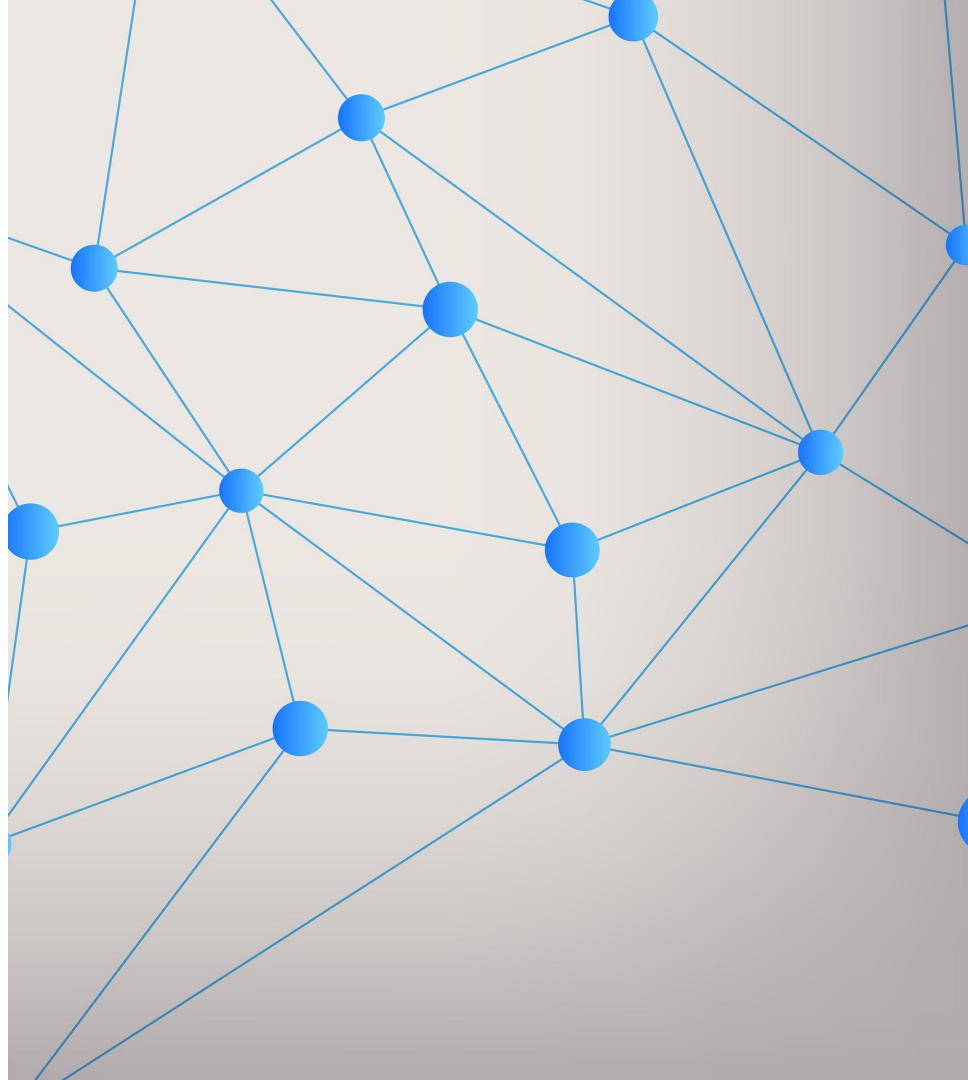
- List
- Table
- Comma Separated Values
- Database
- Linked Data



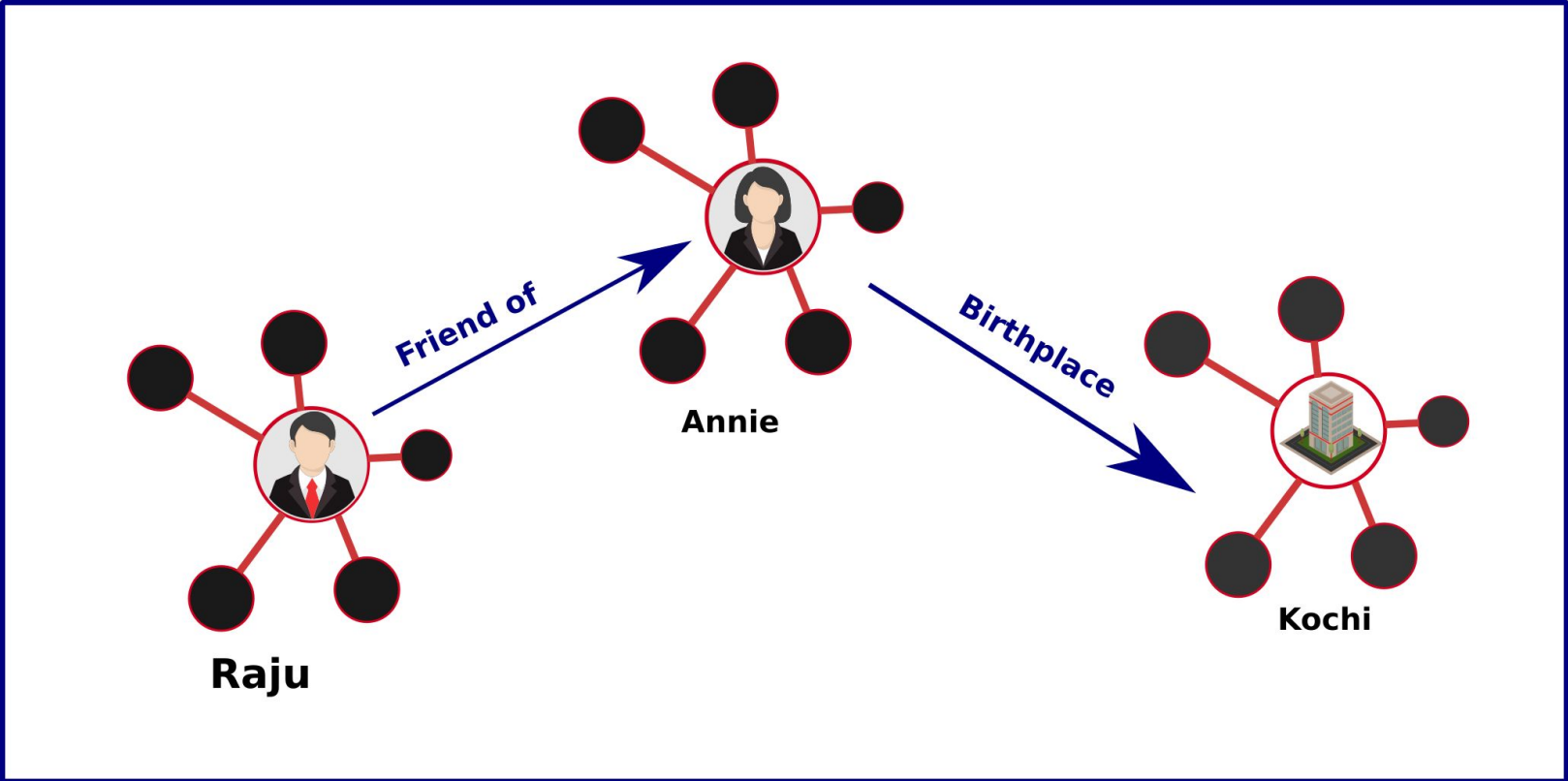
STRUCTURED DATA

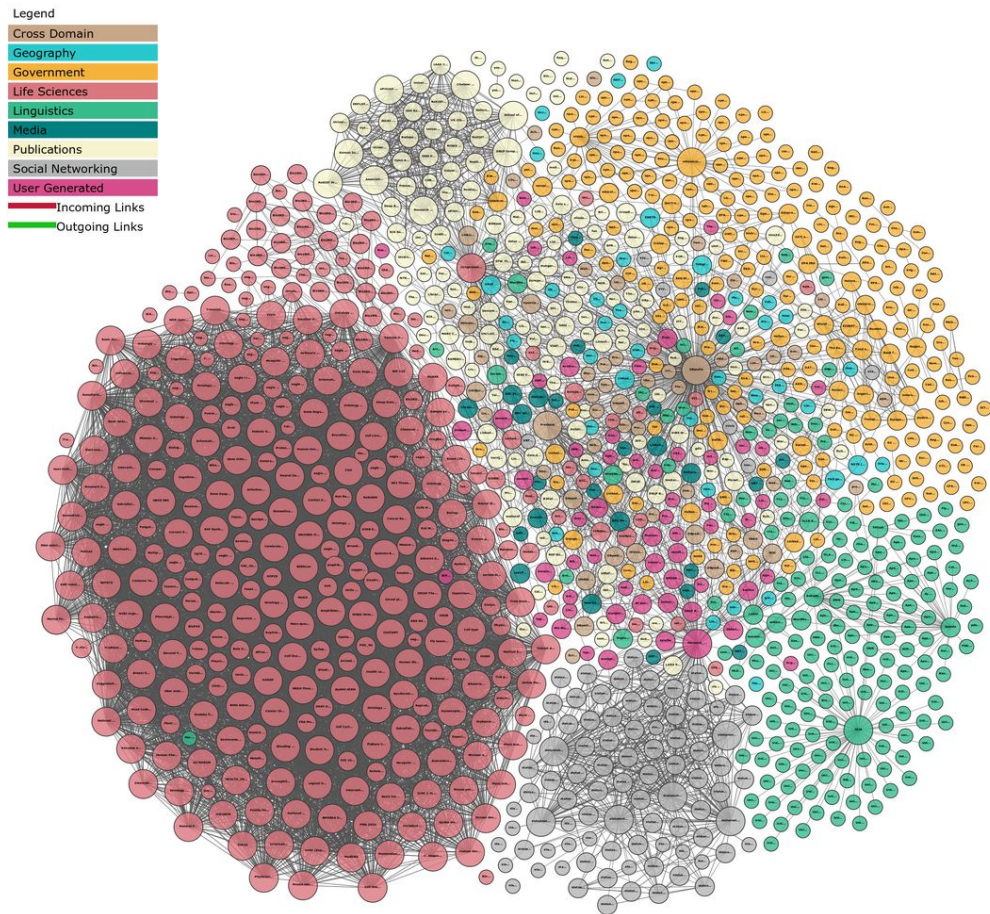
Linked Data

One Data point is connected to another data through a condition



Linked Data





Linking Open Data cloud diagram. <http://lod-cloud.net/>



WIKIDATA

www.wikidata.org

What is Wikidata?

- Editable
- Structured and Linked Data Warehouse
- Available with Free License (CC0)



What is Wikidata?

- Pure Free Software, Pure free data (CC0) - Do whatever you want. No Questions asked
- Open and editable by anyone, including the ontology
- A sister project of Wikipedia, by Wikimedia
- Multilingual support from the first day
- More and more practically used in digital humanities



Structured and linked data

- Structured data: Each unit of information is described by three: **subject, predicate, and object** or as **Wikidata says: item, property, value**.
 - Each three can be further specified with restrictions - for other three (time period, context, source, point of view ...)
- Data statements link to each other, enabling discovery and reasoning.

A brief insight

- Universe (Q1)
- India (Q668)
- Palakkad (Q1006240)
- and / instance of (P31) <- Property



Item: Earth (Q2)

Clickable Link
Connect to another
Item

Statements




<p>instance of</p>  <p>↕</p>	<p>inner planet ...</p> <p>▼ 0 references</p> <p>Value</p>	<p> edit</p> <p>+ add reference</p> <p>+ add value</p>
<p>part of</p>	<p>Earth-Moon system ...</p> <p>▼ 0 references</p>	<p> edit</p> <p>+ add reference</p>

Image of Earth



Планета Земли фотография КА Юноны.jpg

640 × 480; 32 KB



vehicle

Juno ...

distance from Earth

0.06457 astronomical unit ...



point in time

26 August 2011 ...

edit



edit

The Earth seen from Apollo 17.jpg

3,000 × 3,002; 6.21 MB



point in time

7 December 1972 ...

media legend

Dünya'nın Apollo 17'den görünüşü (Turkish)

Sininen marmorikuula, kuuluisa kuva Maasta vuodelta 1972. (Finnish)

Jorden sedd från Apollo 17 (Swedish)

distance from Earth

29,000 kilometre ...



Structure of Wikidata

We have a Q (item)

Q have a property P

P have a value Another Q

This is called a Statement

Statement = Item --> Property --> Value

Statement = Item --> Property --> Value

Earth --> highest-point --> Mount Everest

Mount Everest --> elevation above sea level --> 8848 meters

Earth --> deepest point --> Challenger Deep

Challenger Deep --> elevation above sea level --> -10,994±1 metre

Earth -->

highest-point: Mount Everest

deepest point: Challenger Deep

Challenger Deep -->

elevation above sea level: -10,994±1 metre

Mount Everest -->

elevation above sea level: 8848 meters

Earth (Q2) --> highest-point (P610) --> Mount Everest (Q513)

**Mount Everest (Q513) --> elevation above sea level (P2044) -->
8848 meters**

**Earth (Q2) --> deepest point (P1589) --> Challenger Deep
(Q459173)**

**Challenger Deep (Q459173) --> elevation above sea level
(P2044) --> -10,994±1 metre**

Only Numbers Now.

Q2 --> P610 --> Q513

Q513 --> P2044 --> 8848 meters

Q2 --> P1589 --> Q459173

Q459173 --> P2044 --> -10,994±1 meters

Why numbers?

Labels are ambiguous:

What is London?

City in England, City in Canada,

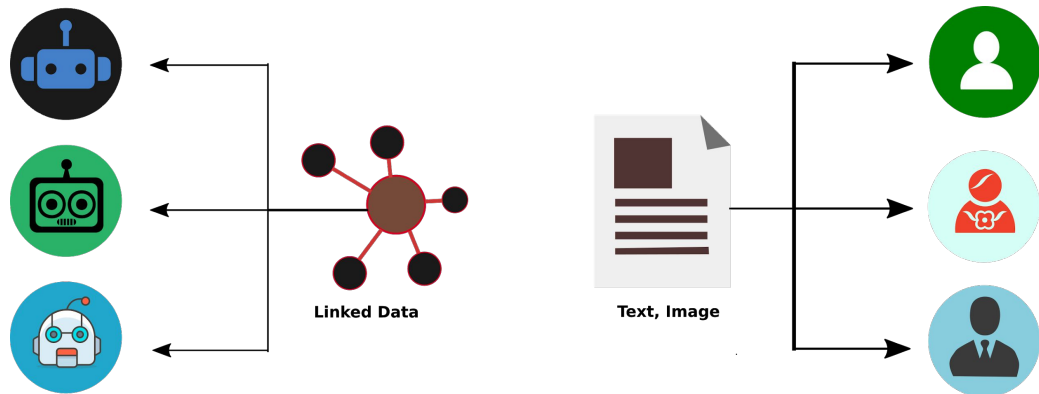
family name,

personal name, movie company, hotel?

Why Numbers ?

Language-neutral - not everybody speaks English!

Robot-friendly (robots love numbers ;)



So What is in Wikidata ?

Universe (Q1)

Pencil (Q14674)

Happy Birthday to You
(Q167545)

global warming (Q7942)

Palakkad (Q1006240)

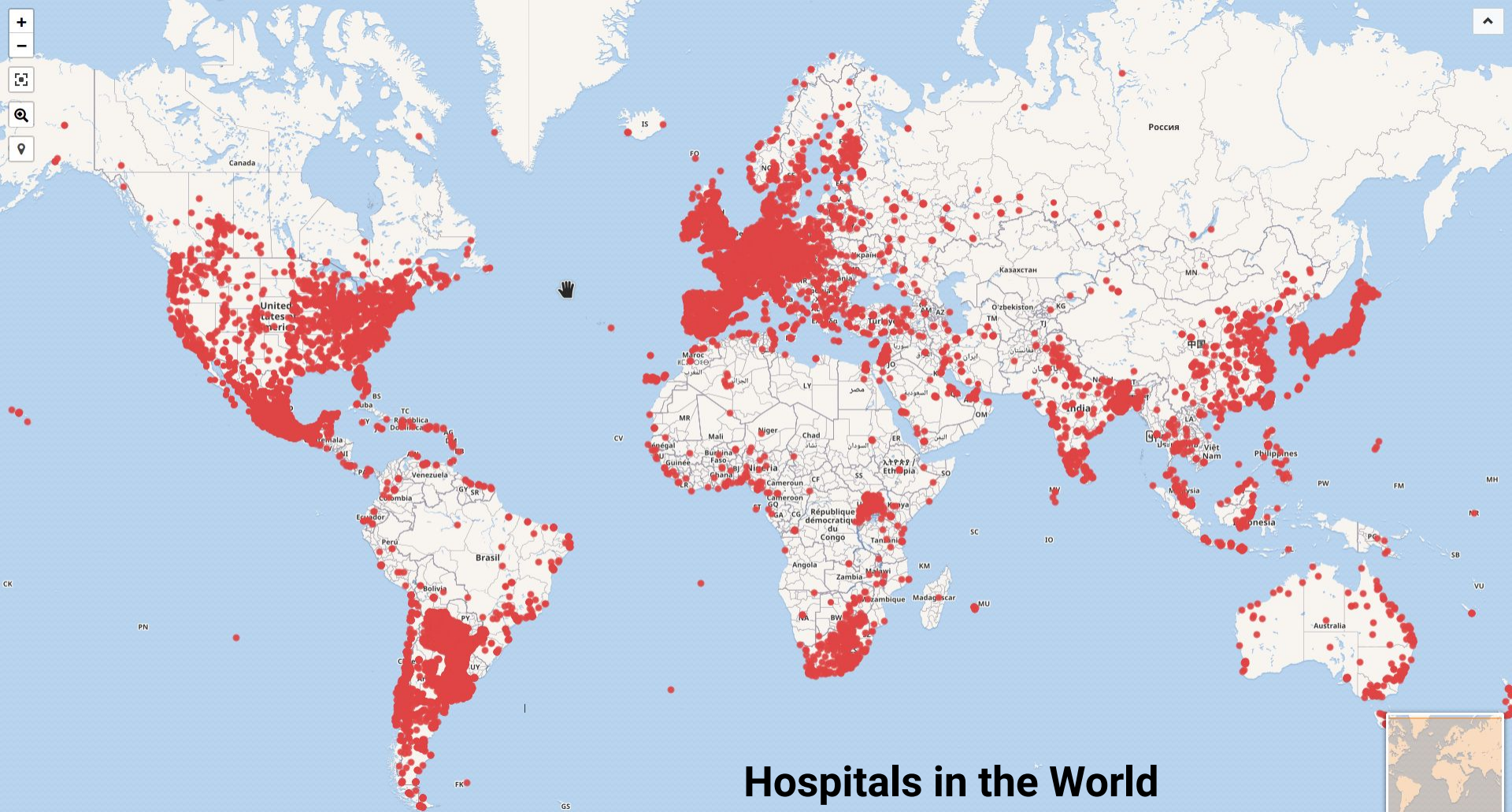
God (Q190)

parish church (Q317557)

ice cream (Q13233)

friendship (Q491)

Everything in the Universe or Beyond



Hospitals in the World

Run this

<https://w.wiki/JgW>

Go to -> <https://query.wikidata.org>

#Map of hospitals

#added 2017-08

#defaultView:Map

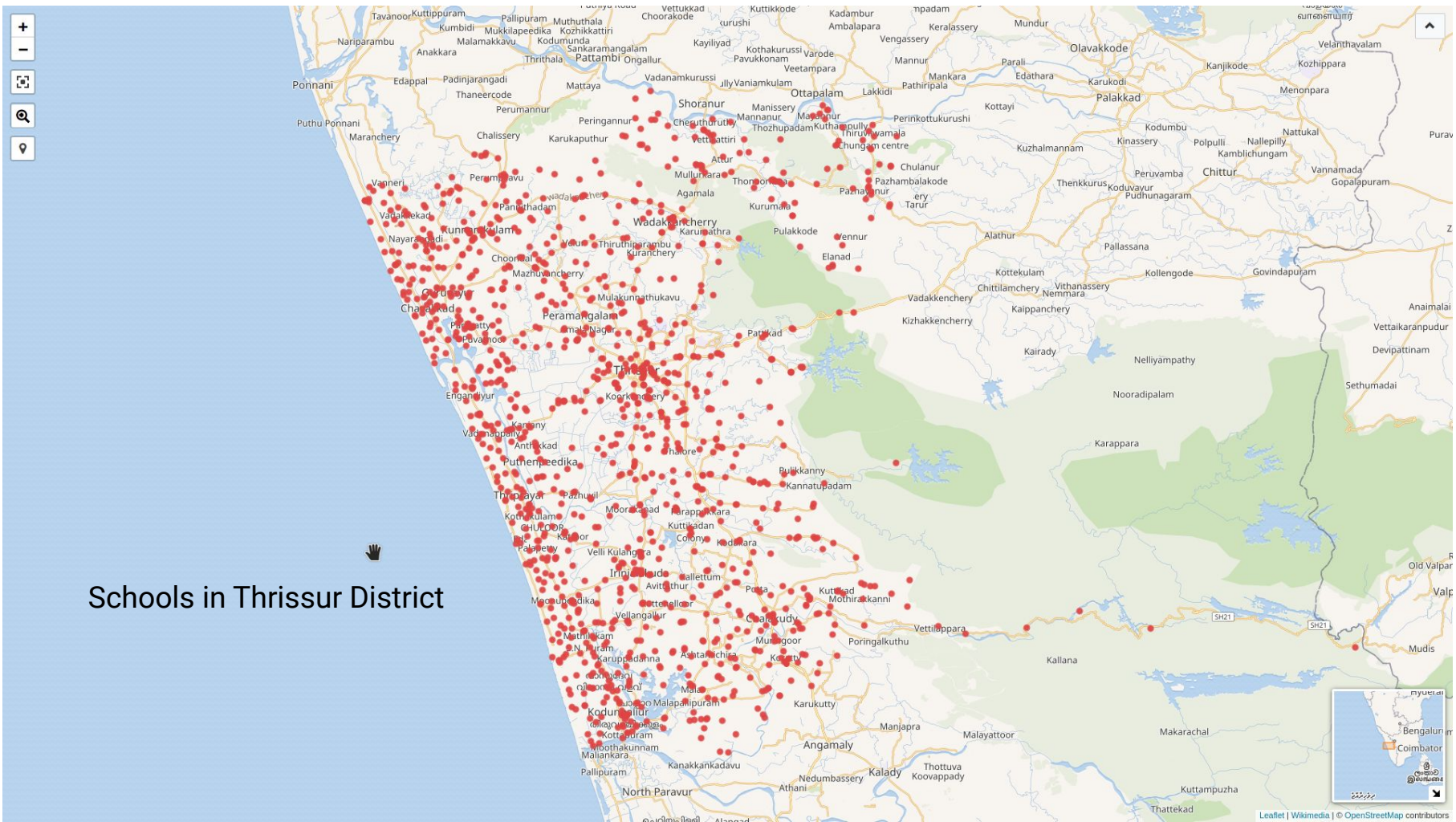
SELECT * WHERE {

?item wdt:P31/wdt:P279* wd:Q16917;

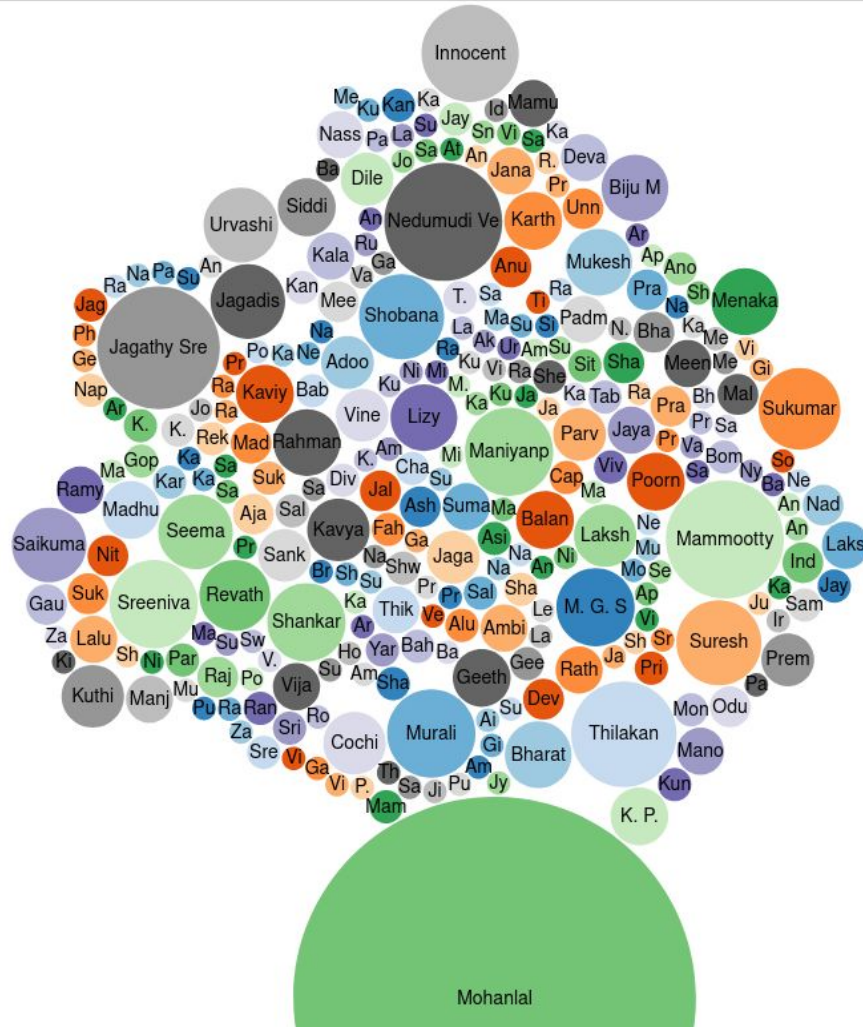
wdt:P625 ?geo .

}

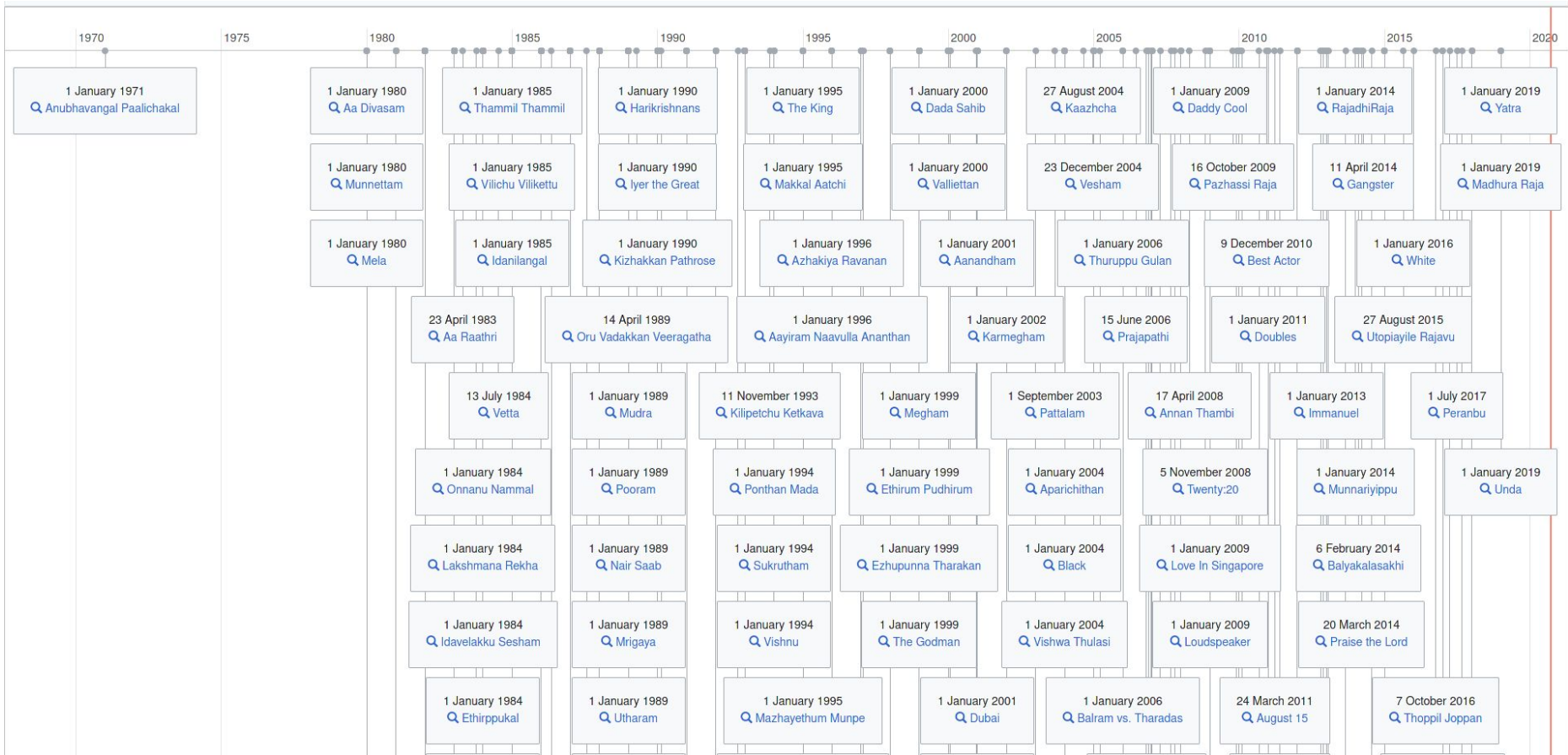
Map is Free



Schools in Thrissur District



Mohanlal
Collaborated with
Other Actors
<https://w.wiki/bw5>



Timeline of Mammootty Films <https://w.wiki/bw8>

Wikidata Projects

Wikiproject India

<https://w.wiki/tQ>

Wikiproject Kerala

<https://w.wiki/CvD>

COVID-19 Taskforce

<https://w.wiki/bwA>



Crotos art browser -

http://zone47.com/crotos/?l=en

Language **English** Images/page **20**

Contribution mode
🌙 🌐 ⚙️



Crotos

Cosmos
Callisto
Lab

145 Results

Everything Creator: **Michelangelo** ✓

-40000 2016 🔍

1 2 3 4 5 ... 8 **Random**



Bearded Slave
Michelangelo - Galleria
dell'Accademia



The Crucifixion of St. Peter
Michelangelo - Vatican Museums



The Holy Family with St John the
Baptist
Michelangelo - Ashmolean Museum



Dos luchadores
Michelangelo - Casa Buonarroti



Dusk
Michelangelo - Medici Chapels



The Ancestors of Christ:
Zerubbabel, Abiud and Eliakim
Michelangelo - Sistine Chapel



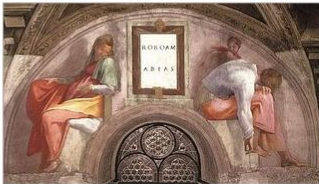
Manchester Madonna
Michelangelo - National Gallery



Nude woman
Michelangelo - Casa Buonarroti



Slaves
Michelangelo - Louvre Museum



Sistine Chapel lunettes - Rehoboam, Abijah
Michelangelo - Vatican Museums



Achim and Eliud
Michelangelo - Vatican Museums



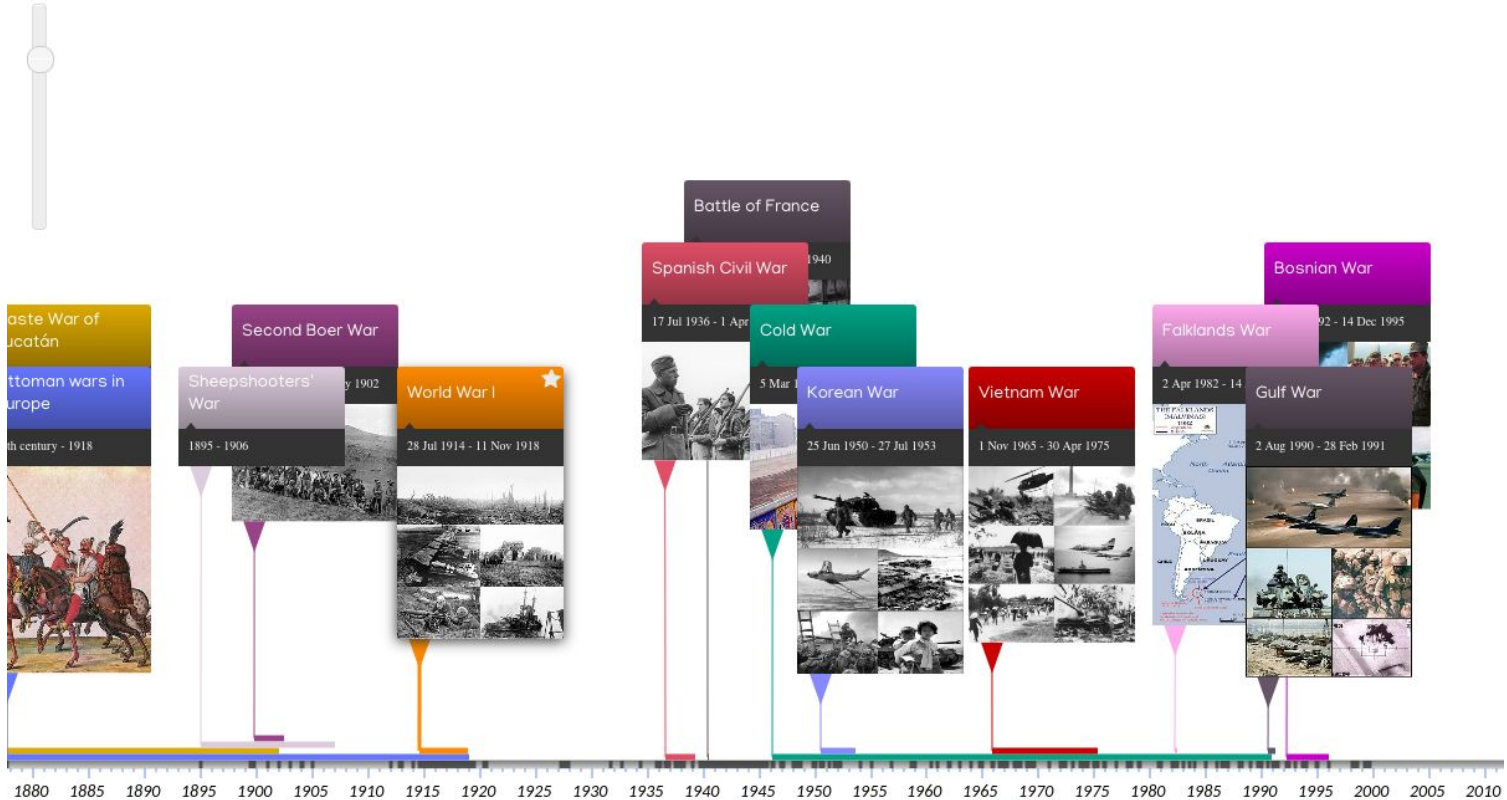
Uzziah, Jotham and Ahaz
Michelangelo - Vatican Museums

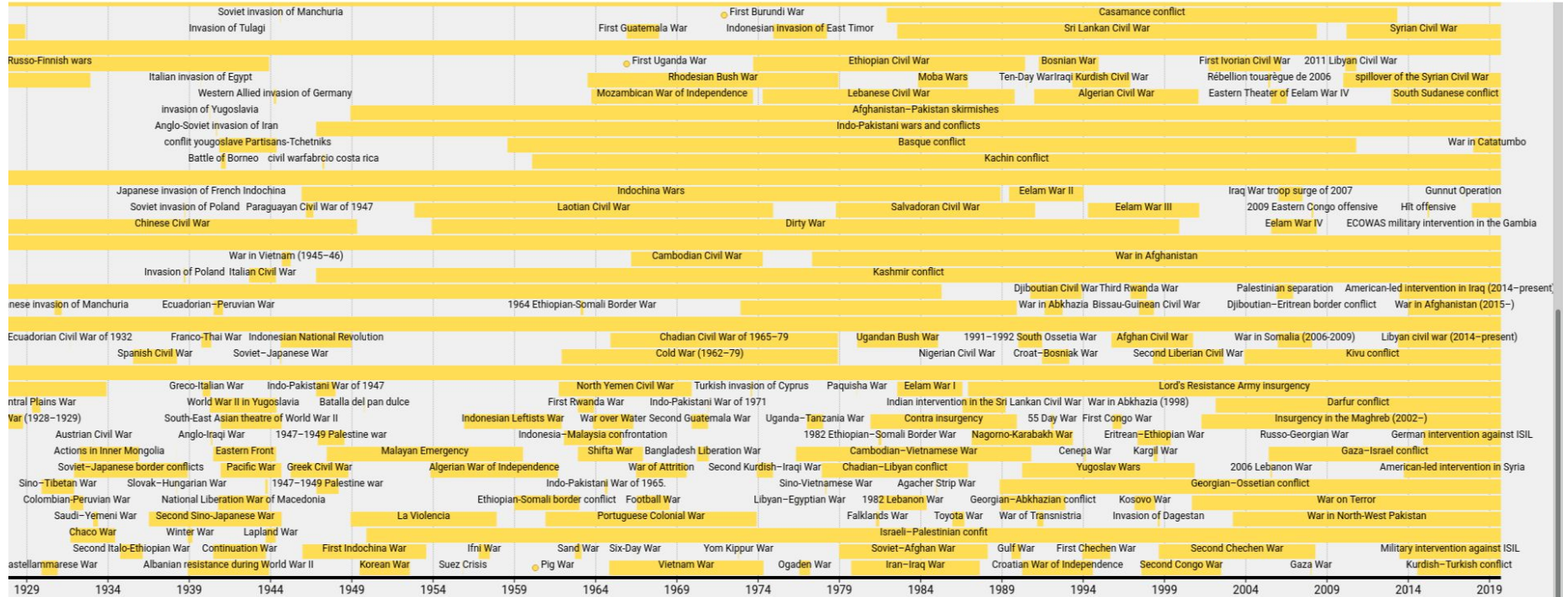


Moses
Michelangelo - Basilica of St. Peter
in Chains



Madonna of the Stairs
Michelangelo - Casa Buonarroti



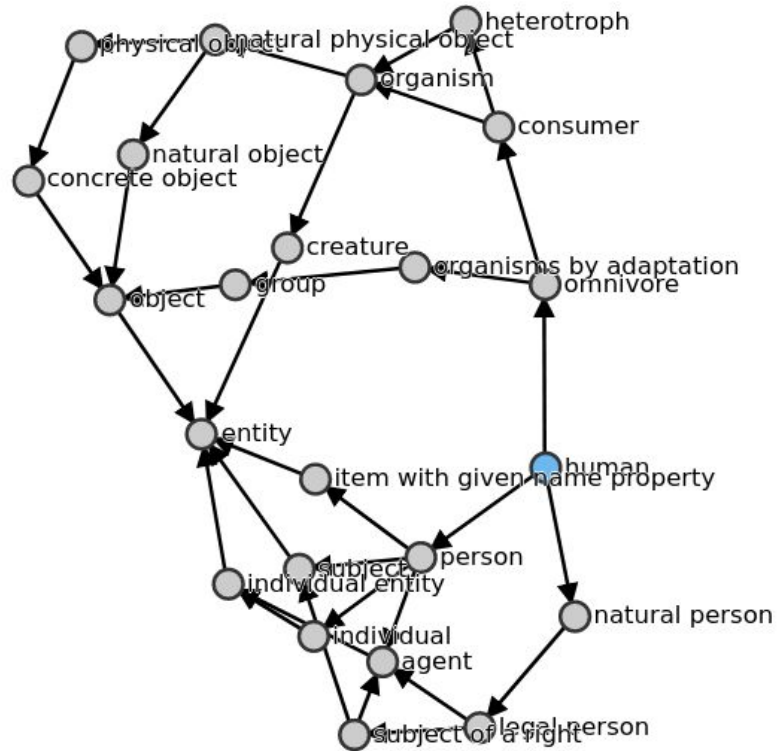


-1001

-1

999

1999



Edit Wikidata

Create an account

Login

Find an Item

Add Data

Querying Wikidata

- * query Wikidata using `[[SPARQL]]`
- * Wikidata will tell you everything it knows, but no more
- * The more data and the more links in Wikidata, the more useful it becomes (so contribute!)

Video Training

Video by Asaf Bartov

<https://www.youtube.com/watch?v=eVrAx3AmUvA>

<http://bit.ly/wikidatavideo>

Wikidata, Knowledge Graphs, and Beyond

Denny Vrandečić, founder of Wikidata.

<https://www.youtube.com/watch?v=Oips1aW738Q>

Presentations

Wiki + data = Wikidata, and why you should care - <https://w.wiki/bzA>

Beyond the basics - Intermediate Wikidata techniques - <https://w.wiki/bzB>

WDQS and SPARQL – WikidataCon 2017 - <https://w.wiki/bzC>

Video in Malayalam

Video by Mujeeb Rahman

<https://www.youtube.com/watch?v=JoVCzvDjd78>

<http://bit.ly/wikidataml>



**Now that you have the power.
This is just a beginning.**

Questions ?

Ranjith Siji

9446541729

ranjith.siji@gmail.com

This presentation is available
under CC-BY-SA-4.0

Wikimedians of Kerala User Group



Images used are under CC-BY-SA-4.0

- Wikidata Logo by [Planemad](https://commons.wikimedia.org/wiki/File:Wikidata-logo-en.svg) - <https://commons.wikimedia.org/wiki/File:Wikidata-logo-en.svg>
- Wikimedians of Kerala UG Logo by [Rajeshodayanchal](https://commons.wikimedia.org/wiki/File:Wikimedians_of_Kerala_User_Group.svg) - https://commons.wikimedia.org/wiki/File:Wikimedians_of_Kerala_User_Group.svg
- Photo of Jimmy Wales by [Joi Ito](https://commons.wikimedia.org/wiki/File:JimmyWalesJI5.jpg) - <https://commons.wikimedia.org/wiki/File:JimmyWalesJI5.jpg>
- Linking Opendata Cloud Diagram - https://commons.wikimedia.org/wiki/File:Lod-cloud_2019-03-29.png
- Crotos art browser - <http://zone47.com/crotos/?l=en>
- Histropedia - <http://histropedia.com/timeline/>
- Wikidata timeline - <https://wikidata-timeline.toolforge.org/>
- Malayalam Wikidata Logo by [Jinoytommanjaly](https://commons.wikimedia.org/wiki/File:Wikidata-ml.svg) - <https://commons.wikimedia.org/wiki/File:Wikidata-ml.svg>
- Robot Icons - [https://commons.wikimedia.org/wiki/File:Cib-probot_\(CoreUI_Icons_v1.0.0\).svg](https://commons.wikimedia.org/wiki/File:Cib-probot_(CoreUI_Icons_v1.0.0).svg) ,
https://commons.wikimedia.org/wiki/File:Noun_Robot_212089_4380c9.svg,
<https://commons.wikimedia.org/wiki/File:092-robot-face-1.svg>
- Human Icons - https://commons.wikimedia.org/wiki/File:Wikimania2019_person_icon.svg,
- Text icon - <https://commons.wikimedia.org/wiki/File:Icon-txt.svg>