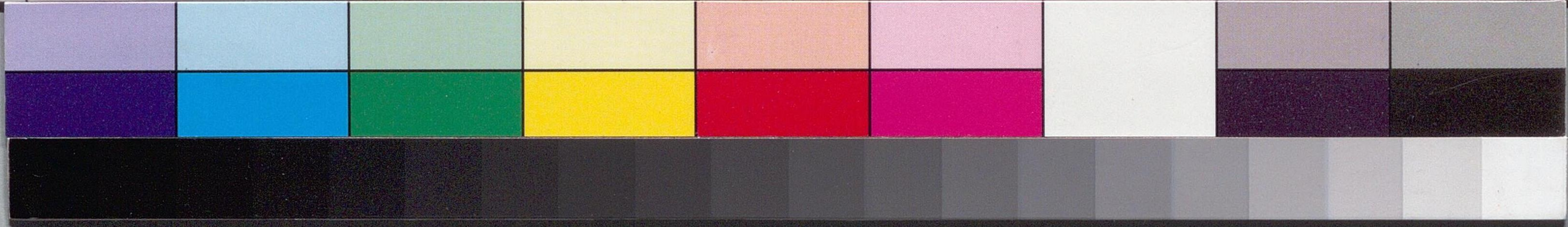
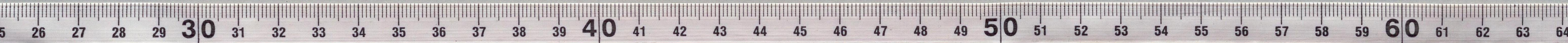
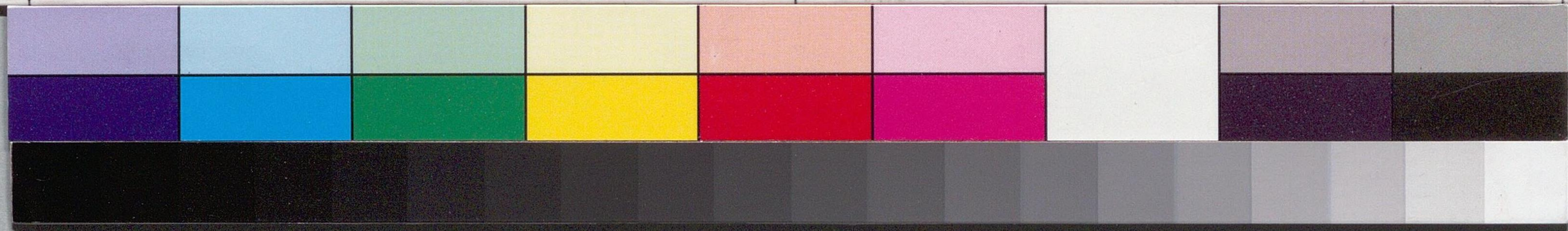
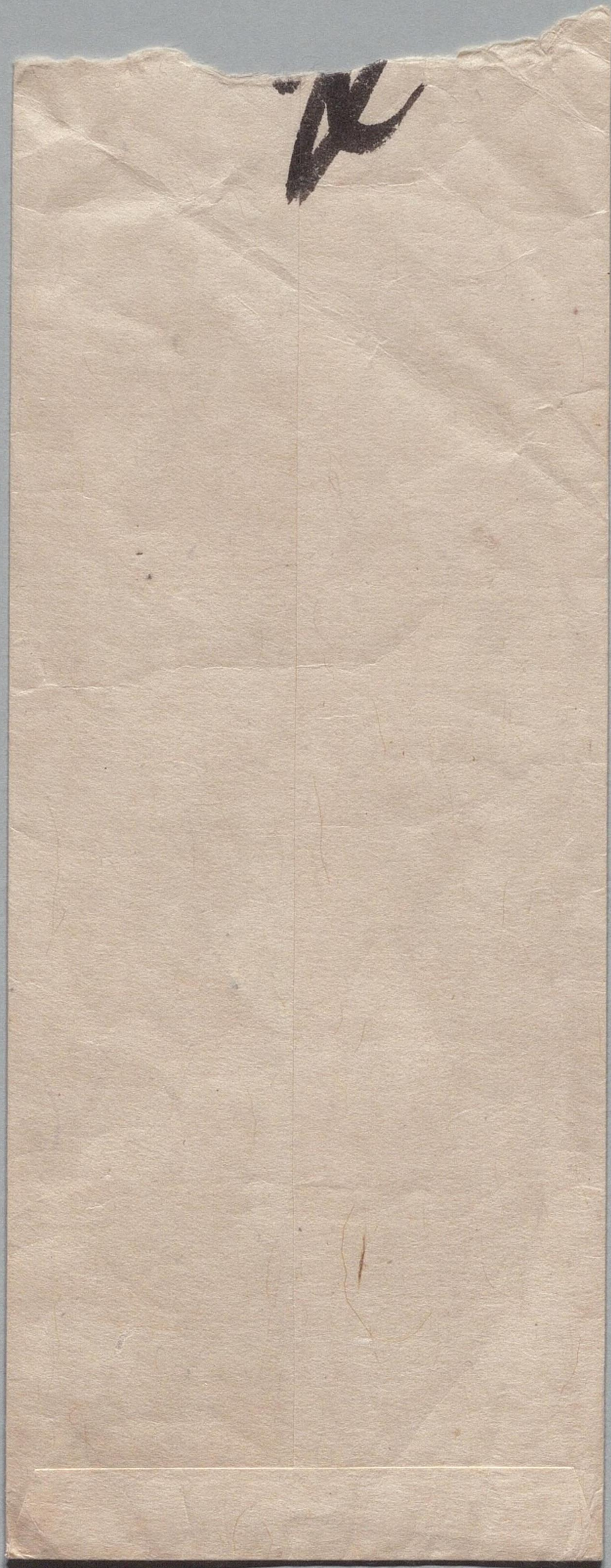


心海  
白雲殿  
与年  
草

廿一  
申



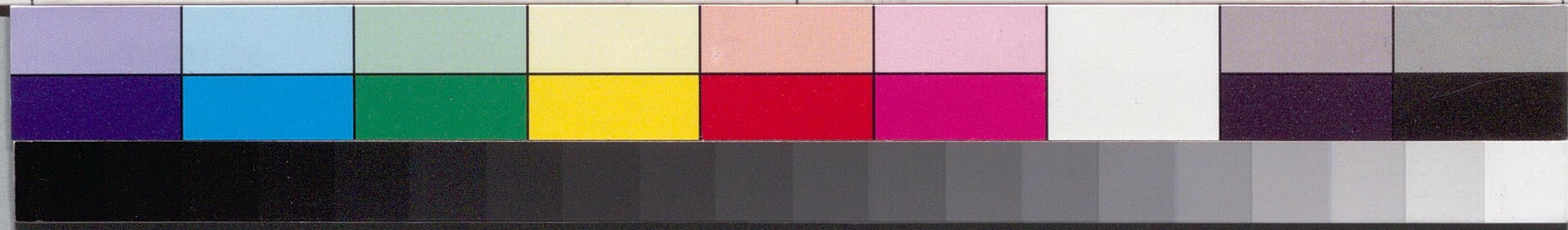
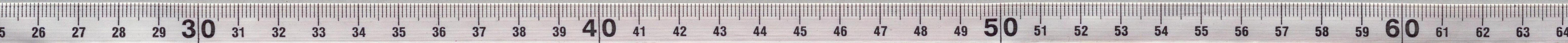




国立国会図書館 尾崎三良関係文書 54-6



Handwritten text on a vertical strip of aged paper, likely a document or envelope flap. The text is written in dark ink and appears to be in a cursive or semi-cursive style, possibly Japanese or Chinese characters. The paper is yellowed and shows signs of wear and creasing.



国立国会図書館 尾崎三良関係文書 54-6



廣文堂

廣文堂

廣文堂

廣文堂

廣文堂

廣文堂

廣文堂

廣文堂

廣文堂

廣文堂

