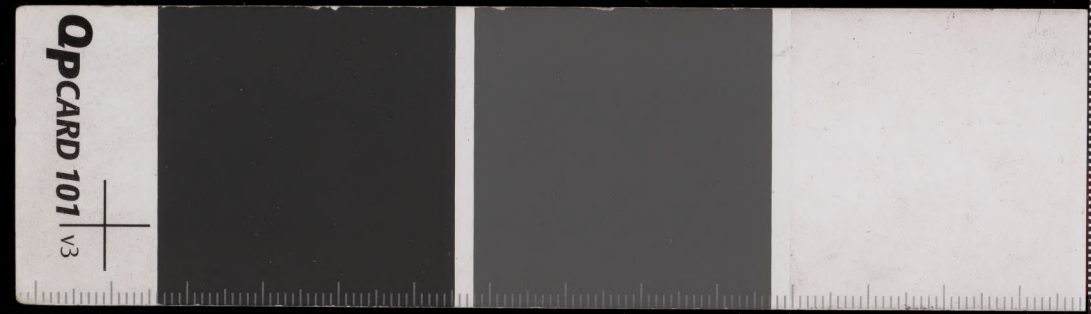


Handwritten text in Burmese script on a palm leaf manuscript. The text is arranged in several lines across the length of the leaf. The script is dark and appears to be a traditional form of Burmese writing. There are some dark smudges and a small hole on the leaf, possibly from insect damage or handling.



Handwritten text in a cursive script on a palm leaf manuscript. The text is arranged in approximately five horizontal lines. A small red mark is visible in the second line, and a dark ink blot is present in the third line. The script is dense and characteristic of traditional Southeast Asian manuscripts.

Handwritten text in an ancient script, likely Tamil, on a palm leaf manuscript. The text is arranged in approximately 10 horizontal lines. The script is finely etched into the surface of the leaf. There are several dark, irregular holes or gaps in the leaf, which appear to be damage or intentional perforations. The overall appearance is that of an ancient, weathered document.

32

Handwritten text in an ancient script, likely Burmese, inscribed on a palm leaf. The text is arranged in approximately five horizontal lines. The script is finely etched into the surface of the leaf. There are several small, dark circular holes or indentations along the length of the leaf, which are characteristic of traditional palm leaf manuscripts. The leaf shows signs of age, with some discoloration and wear at the edges.

1

Handwritten Burmese script on a palm leaf manuscript strip. The text is arranged in approximately five horizontal lines. The script is a traditional form of Burmese, likely used for religious or historical records. The leaf shows signs of age, including discoloration and two distinct holes.

Handwritten Burmese script on a palm leaf manuscript. The text is arranged in approximately five horizontal lines. The script is a traditional form of Burmese writing, likely used for religious or historical records. The leaf shows signs of age, including some staining and wear at the edges. There are two distinct black circular marks on the third line of text. The characters are finely etched into the surface of the dried leaf.

Handwritten text in an ancient script, likely Pāli, inscribed on a palm leaf manuscript. The text is arranged in approximately five horizontal lines across the length of the leaf. The script is finely etched into the surface of the dried leaf. There are two prominent circular holes, which were traditionally used for threading a cord to bind multiple leaves together into a book format. The leaf shows signs of age, including some staining and wear at the edges.

Handwritten text in a cursive script on a palm leaf manuscript. The text is arranged in approximately five horizontal lines. The script is dense and characteristic of traditional Southeast Asian writing. There are several dark, irregular holes or damage marks along the length of the leaf, notably on the left side and in the middle. The leaf itself is aged and has a yellowish-brown hue.

Handwritten text in an ancient script, likely Pāli, inscribed on a palm leaf. The text is arranged in approximately four horizontal lines across the length of the leaf. The script is finely etched into the surface of the dried leaf. There are two distinct dark circular holes, which are traditional features used for threading a cord to bind multiple leaves together into a book format. The leaf shows signs of age, including some wear and discoloration.

Handwritten text in a cursive script, likely Burmese, on a palm leaf manuscript. The text is arranged in approximately 10 horizontal lines across the length of the leaf. The script is dense and characteristic of traditional Burmese writing. There are two distinct circular holes punched through the leaf, one located roughly in the middle and another slightly to the right. The leaf shows signs of age, including some staining and wear at the edges.

Handwritten text in a cursive script, likely a form of Indic script, covering the entire length of the palm leaf. The text is arranged in approximately five horizontal lines. The script is dense and continuous, with some visible ink bleed-through from the reverse side of the leaf. There are two distinct dark spots on the leaf, one near the center and another towards the right side, which may be intentional markings or damage to the original document.

Handwritten text in a cursive script on a palm leaf manuscript. The text is arranged in approximately four horizontal lines across the length of the leaf. The script is dense and characteristic of traditional Southeast Asian writing systems. There are two distinct circular holes along the length of the leaf, which were used for threading a cord to bind multiple leaves together into a book format. The leaf shows signs of age, including some staining and wear at the edges.

Handwritten text in a cursive script on a palm leaf manuscript. The text is arranged in approximately four horizontal lines. The script is dense and characteristic of traditional Southeast Asian writing systems. There are several small red ink marks or dots scattered throughout the text, possibly serving as markers or decorative elements. The leaf shows signs of age, including some staining and a small dark hole near the center.

ကျွန်ုပ်တို့ ပင်ပန်းစွာ ပညာရပ်ကို လေ့လာခဲ့ပြီး နောက်ပိုင်းတွင် နေရာတစ်ခုခုကို ရောက်ရှိခဲ့ပါသည်။
ဤနေရာတွင် နေထိုင်ရာတွင် အချို့သော အခက်အခဲများ ရှိခဲ့ပါသည်။
ထို့ကြောင့် နေရာတစ်ခုခုကို ရှာဖွေခဲ့ပြီး နောက်ပိုင်းတွင် နေရာတစ်ခုခုကို ရောက်ရှိခဲ့ပါသည်။
ဤနေရာတွင် နေထိုင်ရာတွင် အချို့သော အခက်အခဲများ ရှိခဲ့ပါသည်။
ထို့ကြောင့် နေရာတစ်ခုခုကို ရှာဖွေခဲ့ပြီး နောက်ပိုင်းတွင် နေရာတစ်ခုခုကို ရောက်ရှိခဲ့ပါသည်။
ဤနေရာတွင် နေထိုင်ရာတွင် အချို့သော အခက်အခဲများ ရှိခဲ့ပါသည်။
ထို့ကြောင့် နေရာတစ်ခုခုကို ရှာဖွေခဲ့ပြီး နောက်ပိုင်းတွင် နေရာတစ်ခုခုကို ရောက်ရှိခဲ့ပါသည်။
ဤနေရာတွင် နေထိုင်ရာတွင် အချို့သော အခက်အခဲများ ရှိခဲ့ပါသည်။
ထို့ကြောင့် နေရာတစ်ခုခုကို ရှာဖွေခဲ့ပြီး နောက်ပိုင်းတွင် နေရာတစ်ခုခုကို ရောက်ရှိခဲ့ပါသည်။

Handwritten text in an ancient script, likely Tamil, inscribed on a palm leaf. The text is arranged in approximately 10 horizontal lines. The script is finely etched into the surface of the leaf. There are two distinct circular holes along the length of the leaf, which were traditionally used for threading a cord to bind multiple leaves together into a book format. The leaf shows signs of age, including some staining and wear at the edges.

Handwritten text in an ancient script, likely Tamil, inscribed on a palm leaf. The text is arranged in approximately 10 horizontal lines. The script is finely etched into the surface of the leaf. There are two distinct circular holes along the length of the leaf, which were traditionally used for threading a cord to bind multiple leaves together into a book format. The leaf shows signs of age, including some staining and wear at the edges.

၆၆

Handwritten Burmese script on a palm leaf manuscript strip. The text is arranged in approximately four horizontal lines, written from left to right. The script is a traditional form of Burmese, likely used for religious or historical records. The leaf shows signs of age, including several dark circular holes and some staining, particularly near the right edge.

Handwritten text in a cursive script on a palm leaf manuscript strip. The text is arranged in approximately five horizontal lines. The script is dense and characteristic of traditional Southeast Asian writing systems. There are two distinct circular holes punched through the leaf, one located roughly in the middle and another slightly to the right. The leaf shows signs of age, with some discoloration and wear at the edges.

Handwritten text on a long, narrow strip of aged paper, likely a manuscript or document fragment. The text is written in a cursive script, possibly a historical form of a European language, and is arranged in several lines across the length of the strip. The paper shows signs of wear, including a hole and some staining.

Handwritten text in a script, possibly Indic, on a piece of aged paper. The text is written in a cursive style and is somewhat faded. It appears to be a single line of text, possibly a name or a short phrase. The paper is heavily stained and has a hole near the center.