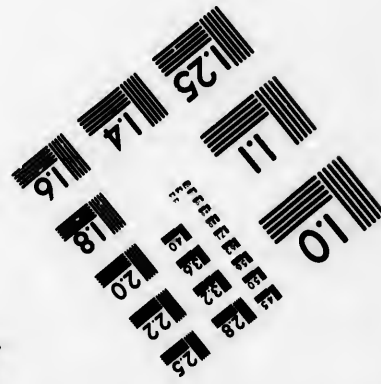
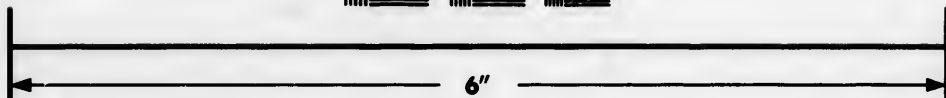
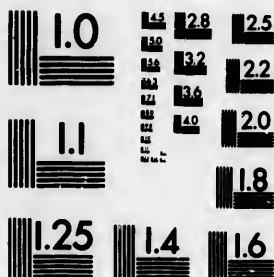


**IMAGE EVALUATION  
TEST TARGET (MT-3)**



**Photographic  
Sciences  
Corporation**

23 WEST MAIN STREET  
WEBSTER, N.Y. 14580  
(716) 872-4503

**CIHM/ICMH  
Microfiche  
Series.**

**CIHM/ICMH  
Collection de  
microfiches.**



**Canadian Institute for Historical Microreproductions / Institut canadien de microreproductions historiques**

**© 1985**

Technical and Bibliographic Notes/Notes techniques et bibliographiques

The Institute has attempted to obtain the best original copy available for filming. Features of this copy which may be bibliographically unique, which may alter any of the images in the reproduction, or which may significantly change the usual method of filming, are checked below.

L'Institut a microfilmé le meilleur exemplaire qu'il lui a été possible de se procurer. Les détails de cet exemplaire qui sont peut-être uniques du point de vue bibliographique, qui peuvent modifier une image reproduite, ou qui peuvent exiger une modification dans la méthode normale de filmage sont indiqués ci-dessous.

- Coloured covers/  
Couverture de couleur
- Covers damaged/  
Couverture endommagée
- Covers restored and/or laminated/  
Couverture restaurée et/ou pelliculée
- Cover title missing/  
Le titre de couverture manque
- Coloured maps/  
Cartes géographiques en couleur
- Coloured ink (i.e. other than blue or black)/  
Encre de couleur (i.e. autre que bleue ou noire)
- Coloured plates and/or illustrations/  
Planches et/ou illustrations en couleur
- Bound with other material/  
Relié avec d'autres documents
- Tight binding may cause shadows or distortion  
along interior margin/  
La reliure serrée peut causer de l'ombre ou de la  
distorsion le long de la marge intérieure
- Blank leaves added during restoration may  
appear within the text. Whenever possible, these  
have been omitted from filming/  
Il se peut que certaines pages blanches ajoutées  
lors d'une restauration apparaissent dans le texte,  
mais, lorsque cela était possible, ces pages n'ont  
pas été filmées.
- Additional comments:/  
Commentaires supplémentaires:

- Coloured pages/  
Pages de couleur
- Pages damaged/  
Pages endommagées
- Pages restored and/or laminated/  
Pages restaurées et/ou pelliculées
- Pages discoloured, stained or foxed/  
Pages décolorées, tachetées ou piquées
- Pages detached/  
Pages détachées
- Showthrough/  
Transparence
- Quality of print varies/  
Qualité inégale de l'impression
- Includes supplementary material/  
Comprend du matériel supplémentaire
- Only edition available/  
Seule édition disponible
- Pages wholly or partially obscured by errata  
slips, tissues, etc., have been refilmed to  
ensure the best possible image/  
Les pages totalement ou partiellement  
obscurcies par un feuillet d'errata, une pelure,  
etc., ont été filmées à nouveau de façon à  
obtenir la meilleure image possible.

This item is filmed at the reduction ratio checked below/  
Ce document est filmé au taux de réduction indiqué ci-dessous.

10X	14X	18X	22X	26X	30X
<input type="checkbox"/>	<input type="checkbox"/>	<input checked="" type="checkbox"/>	<input type="checkbox"/>	<input type="checkbox"/>	<input type="checkbox"/>
12X	16X	20X	24X	28X	32X

The copy filmed here has been reproduced thanks to the generosity of:

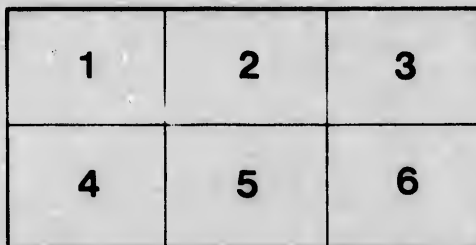
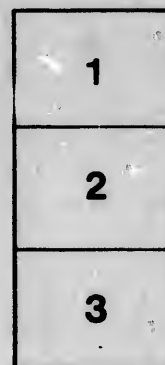
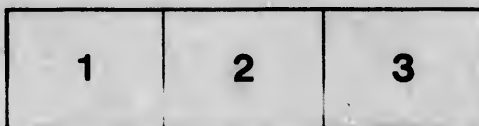
Nova Scotia Public Archives

The images appearing here are the best quality possible considering the condition and legibility of the original copy and in keeping with the filming contract specifications.

Original copies in printed paper covers are filmed beginning with the front cover and ending on the last page with a printed or illustrated impression, or the back cover when appropriate. All other original copies are filmed beginning on the first page with a printed or illustrated impression, and ending on the last page with a printed or illustrated impression.

The last recorded frame on each microfiche shall contain the symbol  $\rightarrow$  (meaning "CONTINUED"), or the symbol  $\nabla$  (meaning "END"), whichever applies.

Maps, plates, charts, etc., may be filmed at different reduction ratios. Those too large to be entirely included in one exposure are filmed beginning in the upper left hand corner, left to right and top to bottom, as many frames as required. The following diagrams illustrate the method:



L'exemplaire filmé fut reproduit grâce à la générosité de:

Nova Scotia Public Archives

Les images suivantes ont été reproduites avec le plus grand soin, compte tenu de la condition et de la netteté de l'exemplaire filmé, et en conformité avec les conditions du contrat de filmage.

Les exemplaires originaux dont la couverture en papier est imprimée sont filmés en commençant par le premier plat et en terminant soit par la dernière page qui comporte une empreinte d'impression ou d'illustration, soit par le second plat, selon le cas. Tous les autres exemplaires originaux sont filmés en commençant par la première page qui comporte une empreinte d'impression ou d'illustration et en terminant par la dernière page qui comporte une telle empreinte.

Un des symboles suivants apparaîtra sur la dernière image de chaque microfiche, selon le cas: le symbole  $\rightarrow$  signifie "A SUIVRE", le symbole  $\nabla$  signifie "FIN".

Les cartes, planches, tableaux, etc., peuvent être filmés à des taux de réduction différents. Lorsque le document est trop grand pour être reproduit en un seul cliché, il est filmé à partir de l'angle supérieur gauche, de gauche à droite, et de haut en bas, en prenant le nombre d'images nécessaire. Les diagrammes suivants illustrent la méthode.

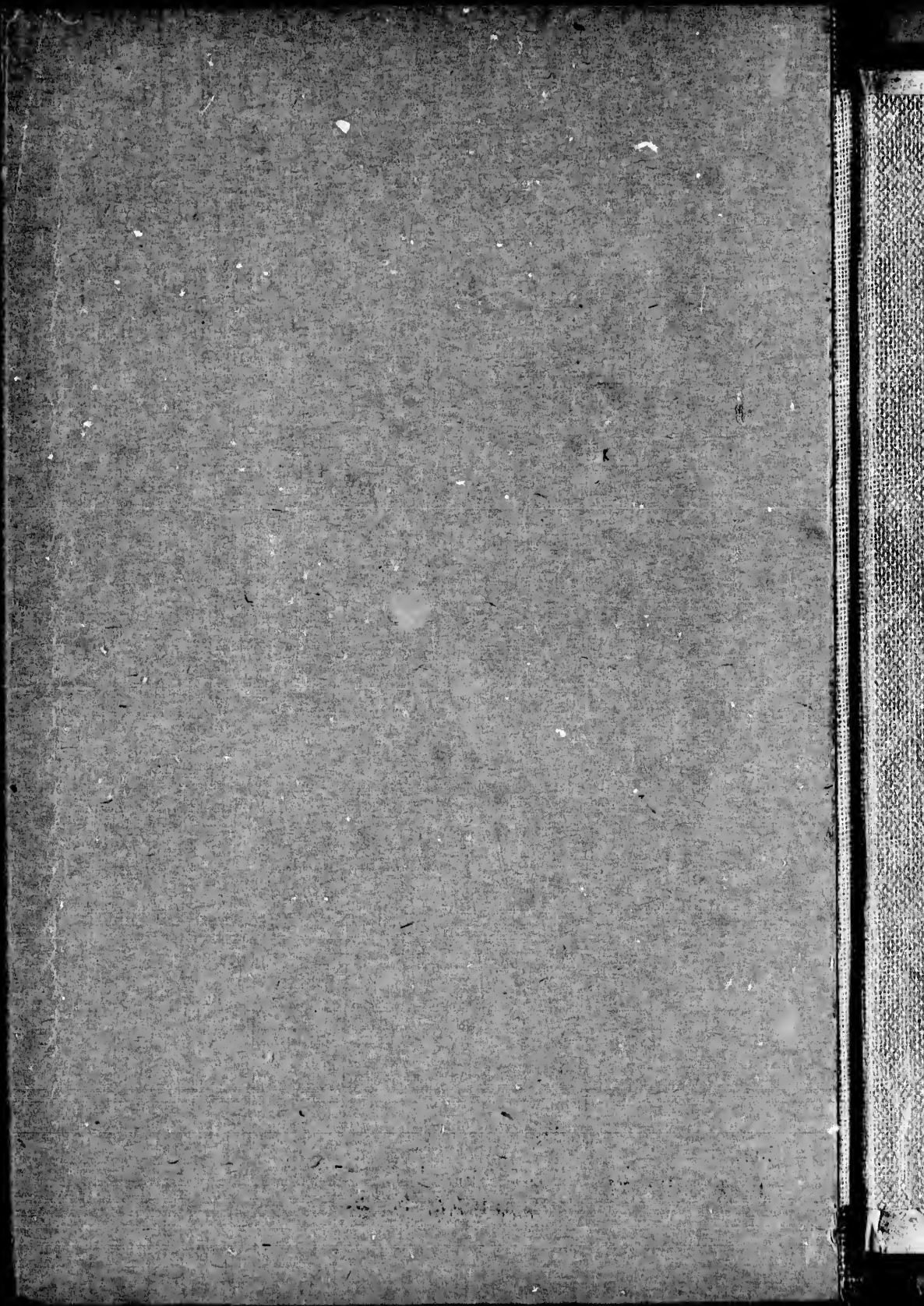
é  
détails  
de du  
modifier  
ou une  
filmage

es

errata  
to

le pelure,  
on à

32X



THE  
NEWFOUNDLAND  
ALMANAC,

FOR THE YEAR OF OUR LORD

1850,

BEING THE SECOND AFTER BISSEXTILE, OR LEAP YEAR

AND IN THE

THIRTEENTH YEAR OF HER MAJESTY'S REIGN.

---

COMPILED BY  
PHILIP TOCQUE.

---

ST. JOHN'S, NEWFOUNDLAND:

J. WOODS, PRINTER.

MDCCCXLIX.

Public Accession  
HALIFAX. N. S.

AK  
AY  
N75

## CONTENTS.

	Page
Preliminary Notes, &c. . . . .	3
Sun's Rising and Setting . . . . .	4
Almanac . . . . .	5 to 16
Local Events . . . . .	17-20
Meteorological Averages . . . . .	21-24
Officers of the Civil Government . . . . .	25-26
Customs' Department . . . . .	27
Law Department, &c. . . . .	28-29
Clergy . . . . .	30-33
Military . . . . .	34
Naval—Post Office . . . . .	35
Commissioners of Public Boards . . . . .	35-36
Rates of Pilots . . . . .	36
Light Houses . . . . .	37
Officers of the Electoral Districts . . . . .	38-49
Charitable Institutions, &c. . . . .	49-54
Newspapers published in the Colony . . . . .	55
Conception Bay Packets . . . . .	55
Savings' Bank . . . . .	56
Length of Sessions . . . . .	57
Acts passed in the Legislature in 1849 . . . . .	58
Governors of Newfoundland . . . . .	59
Goods imported in 1848 . . . . .	60-61
Treasurer's Account for 1848 . . . . .	62-63
Imports and Exports for 1847-'48 . . . . .	63
Registered Vessels that Entered and Cleared at the Port of St. John's . . . . .	64
Newfoundland Tar &c . . . . .	65-66
Quota for the Seal Fishery, 1847 to '49 . . . . .	67
Statement of Revenue and Expenditure from 1841 to 1848—Ships built in the Colony—Ships owned and registered in the Colony . . . . .	68
Quantity and Value of Exports . . . . .	69
Governors of North American Colonies . . . . .	69
Chief Powers of Europe . . . . .	70
Variation of the Compass . . . . .	71
Population of the Electoral Districts . . . . .	72
Royal Family . . . . .	73-74
Appendix . . . . .	75-76
Advertisements.	

Page 3  
 4  
 5 to 16  
 17-20  
 21-24  
 25-26  
 27  
 28-29  
 30-33  
 34  
 35  
 35-36  
 36  
 37  
 38-49  
 49-54  
 55  
 55  
 56  
 57  
 58  
 59  
 60-61  
 62-63  
 63  
 64  
 65-66  
 67  
 68  
 69  
 69  
 70  
 71  
 72  
 73  
 73-74  
 75-76

THE  
 NEWFOUNDLAND  
**ALMANAC,**

**ALMANAC,**

EXPLANATORY NOTICES  
 FOR THE YEAR OF OUR LORD

Owing to the great expense of illustration  
 rather with the limited sale of the Almanac in  
 Newfoundland the printer has been obliged  
 to design the original design of the  
 printing engraving. He trusts however that  
 the present Almanac bears evidence of having  
 been the second after BISEXTILE, OR LEAP YEAR,

**1850**

**AND IN THE**

**THIRTEENTH YEAR OF HER MAJESTY'S REIGN**

COMPILED BY  
**PHILIP TOCQUE.**

ST. JOHN'S, NEWFOUNDLAND.  
 J. WOODS, PRINTER.

MDCCCXLIX.

HALLIFAX N.S.



THE  
NEW FOUNDLAND

ALMANAC

EXPLANATORY NOTICES,

FOR THE YEAR OF 1841

Owing to the great expense of illustrations, together with the limited sale of the Almanac in Newfoundland, the Compiler has very reluctantly been obliged to abandon his original design of furnishing engravings. He trusts, however, that the present Almanac bears evidence of perseverance in the attempt to improve upon the work of the previous year.

The compiler begs leave to tender his most cordial acknowledgments to his friend and talented countryman, Mr. ST. JOHN, of Harbour Grace, to whom he is indebted for the Astronomical calculations.

PRINTED BY  
PHILIP HALL

ST. JOHN'S, NEWFOUNDLAND.

1. WOODS, PRINTER.

HALIFAX.

Public Archives of Nova Scotia  
HALIFAX, N. S.

Golden  
Eclipse  
Solar  
Domini  
Romani  
Julian  
Septem  
day  
Ash  
Good  
Easter

The  
the  
The  
Earth  
bruar  
39° 2  
on th  
in low

The  
Earth  
noon  
time  
ends  
W.,

Latit  
Long  
Ditto  
Magn

# NEWFOUNDLAND ALMANAC

For 1850.

## PRELIMINARY NOTES.

Golden Number	8	Ascension Day	May 9
Epaet	17	(Holy Thurs)	May 24
Solar Cycle	11	Queen's Birthday	May 19
Dominical Letter	F	Whit Sunday	May 26
Roman Indiction	8	Trinity Sunday	May 30
Julian Period	6563	Corpus Christi	June 20
Septuagesima Sunday	Jan. 27	Queen's Ascension	Nov. 9
Ash Wednesday	Feb. 13	Prince Wales birthday	Dec. 1
Good Friday	March 29	Advent Sunday	
Easter Day	March 31		

## ASTRONOMICAL PHENOMENA.

There will be two Eclipses in 1850, both of the sun, and both invisible in this Island.

The First—an Annular Eclipse—begins on the Earth generally at 56 minutes past 11 P.M., February 11—St. John's mean (civil) time—in lon.  $39^{\circ} 22'$  E., and lat.  $11^{\circ} 21'$  S.; and ends generally on the morning of the 12th, at 3 minutes past 6, in lon.  $126^{\circ} 32'$  E., and lat.  $14^{\circ} 50'$  N.

The Second—a Total Eclipse—begins on the Earth generally at 20 minutes past 3 in the afternoon of the 7th August—St. John's mean (civil) time—in lon.  $163^{\circ} 52'$  E., and lat.  $11^{\circ} 49'$  N.; and ends generally at 40 minutes past 8, in lon.  $94^{\circ} 16'$  W., lat.  $10^{\circ} 9'$  S.

## ST. JOHN'S.

Latitude	$47^{\circ} 33' 22''$ North
Longitude (Meridian of Halifax)	$10^{\circ} 52' 31''$ East
Ditto (Meridian of Greenwich)	$52^{\circ} 45' 29''$ West
Magnetic Variation (1828)	$28^{\circ} 44' 0''$ Westerly

**MEAN TIME OF SUN-RISE AND SUN-SET AT ST. JOHN'S, NEWFOUNDLAND,  
ON EVERY TUESDAY IN THE YEAR 1850.**

DATE	SUN RISE	SUN SET	DATE	SUN RISE	SUN SET
Jan 1	7 51	4 17	Dec 1	6 11	5 39
8	7 49	4 26	8	6 21	5 25
15	7 45	4 35	15	6 39	5 12
22	7 39	4 45	22	6 49	4 58
29	7 31	4 55	29	6 52	4 47
Feb 5	7 23	5 5	5	7 3	4 36
12	7 12	5 17	12	7 14	4 27
19	7 0	5 28	19	7 23	4 18
26	6 47	5 39	26	7 32	4 12
Mar 5	6 34	5 49	3	7 40	4 8
12	6 20	6 0	10	7 45	4 6
19	6 6	6 10	17	7 49	4 7
26	5 52	6 20	24	7 51	4 11
			31		4 15

X X X X X

# January, 31 Days

5

## MOON'S PHASES.

Last Quarter	5th day	5h. 5m.	7m. Morning
New Moon	12th day	7h. 40m.	Morning
First Quarter	21st day	6h. 9m.	Morning
Full Moon	29th day	9h. 21m.	Evening

Days.	Sundays and remarkable days.	Sun's de- clination.
x Tuesday 1	Circumcision.	6.23 2
Wednesday 2		22 56
Thursday 3		22 55
Friday 4		22 55
x Saturday 5		22 55
x Sunday 6	Epiphany, Old Christmas Day	22 51
Monday 7		22 51
Tuesday 8	Lucian, P. and M.	22 16
Wednesday 9		22 8
Thursday 10		21 59
Friday 11		21 50
Saturday 12		21 40
Sunday 13	1st Sunday after Epiphany	21 30
Monday 14		21 20
Tuesday 15		21 9
Wednesday 16		20 58
Thursday 17		20 46
Friday 18	Prisca, V. and M.	20 34
Saturday 19		20 21
Sunday 20	2d Sunday aft Epiph. Agnes [V. M.]	20 9
Monday 21		19 55
Tuesday 22	Vincent, M.	19 49
Wednesday 23		19 26
Thursday 24		19 14
x Friday 25	Conversion of St. Paul	18 59
Saturday 26		18 44
Sunday 27	Septuagesima Sunday	18 29
Monday 28		18 13
Tuesday 29		17 57
x Wednesday 30	King Charles I. Martyr	17 41
Thursday 31		17 24

# February, 1881.

## MOON'S PHASES.

East Quarter	9th day	9h. 48m.	Evening
New Moon	19th day	2h. 59m.	Morning
First Quarter	29th day	4h. 41m.	Evening
Full Moon	30th day	8h. 30m.	Morning

Days.	Sundays and remarkable days.	Sun's de- clination.
Friday 1		S 77 17
Saturday 2	Purification (Candlemas)	76 50
Sunday 3	Saxagesima Sunday	76 33
Monday 4		76 15
Tuesday 5	Agatha, V. and M.	75 57
Wednesday 6		75 39
Thursday 7		75 20
Friday 8		75 1
Saturday 9	<i>ask Wednesday.</i>	74 42
Sunday 10	Quinquagesima Sunday.	74 23
Monday 11	[Shrove Sunday	74 3
Tuesday 12	Shrove Tuesday	73 24
Wednesday 13	<del>Ash</del> Wednesday <i>Suburb</i>	73 4
Thursday 14	Valentine, Bishop	72 55
Friday 15		72 45
Saturday 16		72 21
Sunday 17	1st Sunday in Lent	72 1
Monday 18		71 40
Tuesday 19		71 19
Wednesday 20		70 57
Thursday 21		70 35
Friday 22		70 13
Saturday 23	<i>S. Mathias.</i>	69 52
Sunday 24	2d Sunday in Lent. Duke of [Cambridge born 1772]	69 29
Monday 25		68 57
Tuesday 26		68 45
Wednesday 27		68 22
Thursday 28	Ember Week	68 0

24.

No. 1  
 Feb.  
 1881

# March 31 1882

## MOON'S PHASES

Last Quarter 5th day 4h. 35m. Evening  
 New Moon 13th day 7h. 47m. Evening  
 First Quarter 21st day 0h. 29m. Morning  
 Full Moon 29th day 7h. 56m. Evening

Evening  
 Morning  
 Sun's declination.  
 17 50  
 16 33  
 15 15  
 14 0  
 12 42  
 11 23  
 10 3  
 9 15  
 8 24  
 7 15  
 6 0  
 4 35  
 3 0

Days	Sundays and remarkable days	Sun's declination
Friday 1	St. David, Archbishop	7 37
Saturday 2	Chad, Bishop	7 14
Sunday 3	3d Sunday in Lent	6 57
Monday 4		6 29
Tuesday 5		6 0
Wednesday 6		5 42
Thursday 7	Perpetua, M. M.	5 19
Friday 8		4 55
Saturday 9		4 32
Sunday 10	4th Sunday in Lent	4 5
Monday 11		3 37
Tuesday 12	Gregory, M. B.	3 21
Wednesday 13		3 58
Thursday 14		3 47
Friday 15		3 27
Saturday 16		3 0
Sunday 17	5th Sunday in Lent. St. Peter [trick]	2 55
Monday 18		2 30
Tuesday 19		2 0
Wednesday 20		1 16
Thursday 21	Benedict, Abbot	1 0
Friday 22		0 35
Saturday 23	[Sunday]	0 50
Sunday 24	6th Sunday in Lent. Palm	0 23
Monday 25	Lady Day. Annun. V. M.	0 46
Tuesday 26		0 10
Wednesday 27	Easter Sunday	0 37
Thursday 28		0 20
Friday 29	Good Friday	0 43
Saturday 30		1 0
Sunday 31	Easter Day	1 7

# April, 30 Days.

## MOON'S PHASES.

Last Quarter . . . . . 4th day 0h. 14m. Evening  
 New Moon . . . . . 12th day 9h. 16m. Morning  
 First Quarter . . . . . 19th day 6h. 37m. Morning  
 Full Moon . . . . . 26th day 7h. 50m. Morning

Days.	Sundays and remarkable days.	Sun's declination.
Monday 1	Easter Monday	N. 4 30
Tuesday 2		4 55
Wednesday 3	Richard, Bishop of C.	5 16
Thursday 4	St. Ambrose	5 35
Friday 5		6 2
Saturday 6		6 24
Sunday 7	1st Sunday after Easter. Low	6 47
Monday 8	(Sunday)	7 10
Tuesday 9		7 35
Wednesday 10		7 54
Thursday 11		8 16
Friday 12		8 36
Saturday 13		8 50
Sunday 14	2d Sunday after Easter	9 22
Monday 15		9 45
Tuesday 16		10 5
Wednesday 17		10 26
Thursday 18		10 47
Friday 19	Alphege, Archbishop	11 8
Saturday 20		11 28
Sunday 21	3rd Sunday after Easter	11 49
Monday 22		12 9
Tuesday 23	St. George, Martyr	12 29
Wednesday 24		12 49
Thursday 25	St. Mark, Evangelist	13 9
Friday 26		13 19
Saturday 27		13 43
Sunday 28	4th Sunday after Easter	14 7
Monday 29		14 26
Tuesday 30		14 44

x

x x x

East  
 New  
 First  
 Full  
  
 Wed  
 Thur  
 Frid  
 Satur  
 Sun  
 Mon  
 Tues  
 Wed  
 Thur  
 Frid  
 Satur  
 Sun  
 Mon  
 Tues  
 Wed  
 Thur  
 Frid  
 Satur  
 Sun  
 Mon  
 Tues  
 Wed  
 Thur  
 Frid  
 Satur  
 Sun  
 Mon  
 Tues  
 Wed  
 Thur  
 Frid

# May, 31 Days.

89

## MOON'S PHASES:

First Quarter . . . . .	4th day	7h. 15m.	Morning
New Moon . . . . .	11th day	7h. 39m.	Evening
First Quarter . . . . .	18th day	0h. 23m.	Evening
Full Moon . . . . .	25th day	8h. 37m.	Evening

Evening
Morning
Morning
Morning
Sun's declination.
N. 4 30
4 53
5 16
5 38
6 2
6 24
6 47
7 10
7 32
7 54
8 16
8 38
9 0
9 22
9 45
10 5
10 26
10 47
11 8
11 28
11 49
12 9
12 29
12 49
1 9
1 29
2 48
3 7
3 26
4 44

Sun's declination.	Days.	Sundays and remarkable days.	Sun's declination.
N 15 02	Wednes 1	St. Philip and St. James	15 02
15 20	Thursday 2		15 20
15 38	Friday 3	Invent. of Cross	15 38
15 56	Saturday 4		15 56
16 18	Sunday 5	<i>ascension day</i> 5th Sunday after Easter. Ro.	16 18
16 30	Monday 6	[gation.	16 30
16 47	Tuesday 7		16 47
17 03	Wednes 8		17 03
17 19	Thurs 9	Holy Thurs. Ascension Day	17 19
17 35	Friday 10		17 35
17 51	Saturday 11		17 51
18 06	Sunday 12	Sunday after Ascension	18 06
18 21	Monday 13		18 21
18 36	Tuesday 14		18 36
18 50	Wednes 15		18 50
19 04	Thurs 16		19 04
19 18	Friday 17		19 18
19 31	Saturday 18		19 31
19 45	Sunday 19	Whit Sunday	19 45
19 57	Monday 20		19 57
20 10	Tuesday 21		20 10
20 22	Wednes 22		20 22
20 33	Thurs 23		20 33
20 45	Friday 24	Birth of Queen Victoria, 1819	20 45
20 56	Saturday 25	Princess Helena born, 1846	20 56
21 06	Sunday 26	Trinity Sunday	21 06
21 17	Monday 27		21 17
21 27	Tuesday 28		21 27
21 36	Wednes 29	King Charles II. restored	21 36
21 45	Thurs 30	Corpus Christi	21 45
21 54	Friday 31		21 54



**June, 30 Days.**

**MOON'S PHASES.**

Last Quarter . . . . . 3d day 0h. 16m. Morning  
 New Moon . . . . . 10th day 3h. 49m. Morning  
 First Quarter . . . . . 16th day 6h. 52m. Evening  
 Full Moon . . . . . 24th day 10h. 40m. Morning

Days.	Sundays and remarkable days.	Sun's de- clination.
Saturday 1		N 22 3
Sunday 2	1st Sunday after Trinity	22 11
Monday 3		22 18
Tuesday 4		22 24
Wednesday 5		22 30
Thursday 6		22 36
Friday 7		22 42
Saturday 8		22 48
Sunday 9	2nd Sunday after Trinity	22 54
Monday 10		23 0
Tuesday 11	St. Barnabas, Apostle	23 5
Wednesday 12		23 9
Thursday 13		23 13
Friday 14		23 16
Saturday 15		23 19
Sunday 16	3rd Sunday after Trinity	23 22
Monday 17		23 24
Tuesday 18		23 25
Wednesday 19		23 26
Thursday 20	<i>reception of R. Weil</i>	23 27
Friday 21	Proclamation of Queen Vic.	23 28
Saturday 22		23 28
Sunday 23	4th Sunday after Trinity	23 27
Monday 24	St. John Baptist	23 26
Tuesday 25	Midsummer Day	23 25
Wednesday 26		23 23
Thursday 27		23 21
Friday 28		23 19
Saturday 29	St. Peter, Apostle	23 16
Sunday 30	5th Sunday after Trinity	23 12

Last  
New  
First  
Full

Mont  
Tues  
Wed  
Thur  
Frid  
Satur  
Sund  
Mon  
Tues  
Wed  
Thur  
Frid  
Satur  
Sund  
Mon  
Tues  
Wed  
Thur  
Frid  
Satur  
Sund  
Mon  
Tues  
Wed

# July, 31 Days.

## MOON'S PHASES.

Last Quarter . . . . . 21 day 2h. 27m. Evening  
 New Moon . . . . . 9 h day 10h. 57m. Morning  
 First Quarter . . . . . 16 h day 3h. 11m. Morning  
 Full Moon . . . . . 24th day 1h. 53m. Morning

6m. Morning  
 9m. Morning  
 12m. Evening  
 10m. Morning

Days.	Sun's de- clination.
	N. 22 3
	11
	18
	24
	29
	33
	39
	45
	51
	56
	1
	5
	9
	13
	16
	19
	22
	24
	25
	26
	27
	28
	27
	26
	25
	23
	21
	19
	16
	12

Days.	Sundays and remarkable days.	Sun's de- clination.
Monday 1		N 23 9
Tuesday 2	Visitation of Virgin Mary	23 4
Wednes 3		23 0
Thursday 4		22 55
Friday 5		22 50
Saturday 6		22 44
Sunday 7	6th Sunday after Trinity	22 38
Monday 8		22 31
Tuesday 9		22 24
Wednes 10		22 17
Thurs 11		22 9
Friday 12		22 1
Saturday 13	Annunciation of the Virgin Mary	21 53
Sunday 14	7th Sunday after Trinity	21 44
Monday 15	St. Swithun, Bishop	21 35
Tuesday 16		21 25
Wednes 17		21 15
Thurs 18		21 5
Friday 19		20 54
Saturday 20	Margaret, V.	20 43
Sunday 21	8th Sunday after Trinity	20 32
Monday 22		20 20
Tuesday 23		20 8
Wednes 24		19 56
Thurs 25	St. James, Apostle	19 43
Friday 26	St. Anne	19 30
Saturday 27		19 17
Sunday 28	9th Sunday after Trinity	19 3
Monday 29		18 49
Tuesday 30		18 35
Wednes 31		18 20

\* \* \* \* \*

## MOON'S PHASES.

Last Quarter	1st day	1h. 46m.	Morning
New Moon	7h day	6h. 3m.	Evening
First Quarter	14h day	2h. 16m.	Evening
Full Moon	22d day	5h. 41m.	Evening
Last Quarter	30th day	10h. 47m.	Morning

Days.	Stedays and remarkable days.	Sun's de- clination.
Thursday 1	Lammas Day	N. 18. 05
Friday 2		17. 50
Saturday 3		17. 35
Sunday 4	10th Sunday after Trinity	17. 19
Monday 5		17. 08
Tuesday 6	Transfiguration	16. 46
Wednes 7	Name of Jesus	16. 30
Thursday 8		16. 13
Friday 9		15. 56
Saturday 10	St. Lawrence	15. 38
Sunday 11	11th Sunday after Trinity	15. 21
Monday 12		15. 03
Tuesday 13	Birth of Dowager Queen Adelaide	14. 45
Wednes 14	(laide; 1792)	14. 26
Thurs 15		14. 08
Friday 16		13. 49
Saturday 17	Dutchess of Kent born 1786	13. 30
Sunday 18	12th Sunday after Trinity	13. 11
Monday 19		12. 51
Tuesday 20		12. 31
Wednes 21		12. 12
Thurs 22		11. 52
Friday 23		11. 31
Saturday 24	St. Bartholomew	11. 09
Sunday 25	13th Sunday after Trinity	10. 50
Monday 26		10. 29
Tuesday 27		10. 09
Wednes 28	St. Augustin, B.	9. 47
Thurs 29	St. John Baptist beheaded	9. 26
Friday 30		9. 05
Saturday 31		8. 43

s.

6m. Morning  
 3m. Evening  
 6m. Evening  
 1m. Evening  
 7m. Morning

## September, 30 Days.

13

### MOON'S PHASES:

New Moon . . . . . 16 h day 1h. 59m. Morning  
 First Quarter . . . . . 13h day 4h. 51m. Morning  
 Full Moon . . . . . 21st day 9h. 10m. Morning  
 Last Quarter . . . . . 28th day 6h. 22m. Evening

Days.	Sun's de- clination.
	N. 18m 15
	17m 50
	17m 35
	17m 19
	17m 3
	16m 46
	16m 30
	16m 13
	15m 56
	15m 38
	15m 21
	15m 3
	14m 45
	14m 26
	14m 8
	13m 49
	13m 30
	13m 11
	12m 51
	12m 31
	12m 12
	11m 52
	11m 31
	11m 11
	10m 50
	10m 29
	10m 8
	9m 47
	9m 26
	9m 15
	8m 43

Days.	Sundays and remarkable days.	Sun's de- clination.
Sunday	1 14th Sunday after Trinity.	N. 9m 21
Monday	2	8m 49
Tuesday	3	7m 38
Wednes	4	7m 15
Thursday	5	6m 53
Friday	6	6m 31
Saturday	7 Knurchus, Bishop	6m 19
Sunday	8 15th Sunday after Trinity (Na-	5m 46
Monday	9 [ivity V. Mary)	5m 23
Tuesday	10	5m 1
Wednes	11	4m 38
Thurs	12	4m 15
Friday	13	3m 52
Saturday	14 Holy Cross.	3m 29
Sunday	15 16th Sunday after Trinity.	3m 6
Monday	16	2m 43
Tuesday	17 Lambert, Bishop	2m 20
Wednes	18	1m 56
Thurs	19 Ember Week.	1m 33
Friday	20	1m 10
Saturday	21 St. Matthew, Apostle.	0m 46
Sunday	22 17th Sunday after Trinity.	0m 23
Monday	23	0m 0
Tuesday	24	0m 24
Wednes	25	0m 47
Thurs	26 St. Cyprian, Archbishop	1m 11
Friday	27	1m 34
Saturday	28 [ter, Trinity.	1m 58
Sunday	29 Michaelmas Day. 18th Sun af	2m 21
Monday	30 St. Jerom.	2m 44

\* 29 S. Michael + all days. \*

MOON'S PHASES.

New Moon . . . 6th day 11h. 25m. Morning  
 First Quarter . . . 12th day 10h. 59m. Evening  
 Full Moon . . . 20th day 11h. 41m. Evening  
 Last Quarter . . . 28th day 11h. 29m. Morning

Days.	Sundays and remarkable days.	Sun's de- clination.
Tuesday 1	Remigius, Bishop	3. 9. 38
Wednes 2		3. 31. 31
Thursday 3		3. 13. 54
Friday 4		4. 17. 47
Saturday 5		4. 41. 41
Sunday 6	19th Sunday after Trinity	5. 1. 34
Monday 7		5. 27. 27
Tuesday 8		5. 50. 50
Wednes 9	St. Döny's, Bishop	6. 13. 13
Thurs 10		6. 36. 36
Friday 11		6. 58. 58
Saturday 12		7. 21. 21
Sunday 13	20th Sunday after Trinity	7. 44. 44
Monday 14		8. 6. 6
Tuesday 15		8. 28. 28
Wednes 16		8. 50. 50
Thurs 17	Etheldreda, Abbess	9. 13. 13
Friday 18	St. Luke, Evangelist	9. 34. 34
Saturday 19		9. 56. 56
Sunday 20	21st Sunday after Trinity	10. 18. 18
Monday 21		10. 39. 39
Tuesday 22		11. 1. 1
Wednes 23		11. 22. 22
Thurs 24		11. 43. 43
Friday 25	Crispin, Martyr	12. 4. 4
Saturday 26		12. 25. 25
Sunday 27	22d Sunday after Trinity	12. 45. 45
Monday 28	St. Simon and St. Jude	13. 5. 5
Tuesday 29		13. 25. 25
Wednes 30		13. 45. 45
Thurs 31		14. 5. 5

# November. 30 Days.

15

## MOON'S PHASES.

New Moon	3rd day	11h.	10m.	Evening
First Quarter	11th day	7h.	45m.	Evening
Full Moon	19th day	1h.	4m.	Evening
Last Quarter	26th day	9h.	2m.	Morning

Morning  
 Evening  
 Evening  
 Morning

Sun's de- clination.
3 9 38
3 31
3 54
4 17
4 41
5 4
5 27
5 50
6 13
6 36
6 58
7 21
7 44
8 6
8 28
8 50
9 13
9 34
9 56
10 18
10 39
11 1
11 22
11 43
12 7
12 25
12 45
13 5
13 25
13 45
14 5

Days.	Sundays and remarkable days	Sun's ce- clination.
Friday 1	All Saint Day	3. 14 24
Saturday 2		14 43
Sunday 3	23d Sunday after Trinity	15 2
Monday 4		15 21
Tuesday 5	Gunpowder Plot	15 39
Wednesday 6	Leonard, Confessor	15 58
Thursday 7		16 16
Friday 8		16 33
Saturday 9	Birth of Prince of Wales 1841	16 51
Sunday 10	24th Sunday after Trinity	17 8
Monday 11		17 24
Tuesday 12		17 41
Wednesday 13	Britius, Bishop	17 57
Thursday 14		18 13
Friday 15	Machutus, Bishop	18 28
Saturday 16		18 44
Sunday 17	25th Sunday after Trinity	18 59
Monday 18		19 13
Tuesday 19		19 27
Wednesday 20	Edmund, King	19 41
Thursday 21	Princess Royal born, 1840	19 55
Friday 22	Cecilia, V. and M.	20 8
Saturday 23		20 20
Sunday 24	26th Sunday after Trinity	20 33
Monday 25		20 45
Tuesday 26		20 56
Wednesday 27		21 18
Thursday 28		21 39
Friday 29		21 59
Saturday 30	St. Andrew, Apostle	22 29

MOON'S PHASES.

New Moon... 3rd day 1h. 46m. Evening  
 First Quarter... 11th day 5h. 6m. Evening  
 Full Moon... 19th day 1h. 32m. Morning  
 Last Quarter... 25th day 5h. 53m. Evening

Days.	Sundays and remarkable days.	Sun's de- clination.
Sunday 1	Advent Sunday	S. 21 49
Monday 2		21 58
Tuesday 3		22 6
Wednesday 4		22 15
Thursday 5		22 23
Friday 6	Nicholas, Bishop	22 30
Saturday 7		22 37
Sunday 8	2d Sunday in Advent. Con-	22 44
Monday 9	ception of V. M.	22 50
Tuesday 10		22 56
Wednesday 11		23 1
Thursday 12		23 5
Friday 13	Lucy, V. and M	23 10
Saturday 14		23 14
Sunday 15	3rd Sunday in Advent	23 17
Monday 16		23 20
Tuesday 17		23 22
Wednesday 18		23 24
Thursday 19	Ember Week	23 26
Friday 20		23 27
Saturday 21	St. Thomas, Apostle	23 28
Sunday 22	4th Sunday in Advent	23 28
Monday 23		23 27
Tuesday 24		23 26
Wednesday 25	Christmas Day	23 25
Thursday 26	St. Stephen, M.	23 23
Friday 27	St. John, Evangelist	23 21
Saturday 28	Innocents' Day	23 18
Sunday 29	1st Sunday after Christmas	23 15
Monday 30		23 11
Tuesday 31	Silvester, Bishop	23 7

X  
X  
X  
X  
X

1st—  
2d—  
re  
17th  
(  
J  
17th  
18  
21st  
24th  
23d  
16th  
c  
22d  
23  
28  
29  
3d  
4t  
6

## LOCAL EVENTS.

### JANUARY.

- 1st—First Local Legislature met, 1833.
- 2d—Supreme Court met under present Charter, 1826.
- 17th—First Session of General Assembly. (under new Constitution), opened by Sir John Harvey, 1843.

### FEBRUARY.

- 17th—Benevolent Irish Society founded, 1806.
- 21st—Torbay Church Consecrated, 1841.
- 24th—Governor Pickmore died, 1818.

### MARCH.

- 23d—1st Act made by the Legislature, 1833

### APRIL.

- 16th—Geological Survey of Newfoundland commenced, 1839.
- 22d—Sir John Gaspard Le Marchant arrived, 1847.
- 23d—Sir John Gaspard Le Marchant sworn into office, 1847.
- 28th—Bishop Feild Consecrated, 1844.
- 29th—Gas Company Incorporated, 1844.

### MAY.

- 3d—Foundation Stone of the new Custom House laid by Sir John Gaspard Le Marchant, 1847.
- 4th—Commenced laying Water Pipes in the City of St. John's, 1847.
- 6th—Right Reverend Dr. Mullock, R. C. Coadjutor Bishop, arrived 1848.

m. Evening  
n. Evening  
m. Morning  
n. Evening

ps. Sun's de-  
clination.

S.	21	49
	21	58
	22	6
	22	15
	22	23
	22	30
	22	37
	22	44
	22	50
	22	56
	23	1
	23	5
	23	10
	23	14
	23	17
	23	20
	23	22
	23	24
	23	26
	23	27
	23	28
	23	28
	23	27
	23	26
	23	25
	23	23
	23	21
	23	18
	23	15
	23	11
	23	7



18th—Harbor Grace declared a Free Ware-  
housing Port, 1833.

20th—Foundation Stone of Roman Catho-  
lic Cathedral laid, 1841.

21st—Foundation Stone of new Colonial  
Building laid by Sir John Gaspar Le  
Marchant, 1847.

Foundation Stone of Naive Hall laid by  
Sir John Harvey, 1845.

28th—Bishop Scallan (R.C.) died, 1830.

## JUNE.

3d—Consecration of St. John's old Church,  
1827.

7th—First Lord Bishop of Newfoundland  
arrived, 1840.

9th—St. John's destroyed by third great  
Fire, 1846.

12th—Mechanics' Society Incorporated, 1834

24th—Newfoundland discovered by Cabot,  
1497.

## JULY.

2d—St. Paul's Church, Harbor Grace, Con-  
secrated, 1840.

4th—Lord Bishop Feild arrived, 1841.

7th—Light exhibited on Fort Amherst, 1834.

9th—St. Paul's Church, Harbor Grace,  
opened, 1837.

16th—St. John's a Free Port, 1828.

17th—Water first let into the Main Pipes of  
St. John's Water Works, 1843.

19th—Governor Sir Charles Hamilton arri-  
ved, 1818.

19th—Great Fire at St. John's, 1819.

27th—First Lord Bishop of Newfoundland appointed, 1539.

28th—Foundation Stone of Harbor Grace Church laid by Governor Prescott, 1835.

## AUGUST.

9th—Arrival of Prince Henry of the Netherlands, from Iceland, in the *Rhine*, frigate, 1845.

13th—Exchange Buildings, St. John's, opened, 1842.

18th—Fire at Harbor Grace, 1832. Church burnt.

21st—Foundation Stone of Protestant Cathedral laid, 1843.

23d—St. Thomas's Church (St. John's) consecrated, 1840.

24th—Sir John Harvey embarked for Halifax to assume the Government of Nova Scotia, 1846, and Lieutenant Colonel Law appointed Administrator of the Government.

## SEPTEMBER.

1st—Light House on Cape Spear opened, 1836.

2d—Gas first introduced at St. John's, 1845.

11th—Light exhibited on Cape Bonavista, 1843.

16th—Sir John Harvey arrived and assumed the Government, 1841.

19th—Violent Hurricane, 1846.

21st—St. Thomas's Church opened, 1836.

22d—Charter of new Constitution arrived, 1842.

26th—New Executive Council sworn in, 1842.

Chief Justice Bourne sworn in, 1838.

28th—St. John's Exchange Buildings burnt, 1840.

## OCTOBER.

7th—Governor Sir Thomas Cochrane arrived, 1825.

28th—Bishop Fleming, (R.C.) Consecrated 1829 Benevolent Irish Society Incorporated, 1839.

## NOVEMBER.

3d—Governor Prescott sworn in, and Sir Thomas Cochrane embarked for England, 1834.

4th—Chief Justice Norton arrived, 1844.

7th—Fire at St. John's, 1817, Court House burnt.

16th—General Election, 1848.

20th—Harbor Grace Light House opened, 1837.

21st—Second great fire at St. John's, 1817. Chief Justice Boulton sworn in, 1833.

22d—Chief Justice Brady arrived, 1847. Writs issued for a General Election under the new Constitution, 1842.

28th—Great Fall of Snow, 1842.

## DECEMBER.

3d—St. Andrew's (Scotch) Church op'd, 1843

14th—General Election, 1842. First Session of the Legislature opened, after a return to the old Constitution, by Sir J. G. LeMarchant, 1848.

15th—Branch Bank of British North America's first Draft on London, 1836.

**METEOROLOGICAL AVERAGES.**

Barometer.		Thermometer.	
Newfoundland.	England.	Newfoundland.	England.
Mean height 29,68 inch	29,92 inch	Mean temperature 22,7 deg.	26,0 deg.
Highest 30,35	30,77	Highest 45,1	52,0
Lowest 28,73	28,89	Lowest 4,3	11,0
Mean height 29,62 inch	30,06 inch	Mean temperature 19,75 deg.	24,0 deg.
Highest 30,24	30,82	Highest 42,67	53,0
Lowest 28,69	29,17	Lowest 21,0	52,0
Mean height 29,74 inch	29,84 inch	Mean temperature 24,0 deg.	30,7 deg.
Highest 30,96	30,77	Highest 55,2	66,0
Lowest 28,82	28,87	Lowest 5,3	24,0

U. C. L. C.  
24,3 deg. 19,3 deg.

England.

Newfoundland.

England.

Newfoundland.

**FEBRUARY.**

**MARCH.**

in, 1842.  
1838.  
ings-burnt.  
rane arri-  
onsecrated  
y Incorpo-  
, and Sir  
England,  
1844.  
urt House  
e opened,  
s. 1817.  
1833.  
d, 1847.  
ion under  
p'd, 1843  
irst Ses-  
fter a re-  
ir J. G.  
th Ame-

**METEOROLOGICAL AVERAGES.**

Barometer.		Thermometer.	
Newfoundland.	England.	Newfoundland.	England.
Mean height 29.66 inch	29.88 inch	Mean temperature 28.8 deg.	49.9 deg.
Highest 30.26	30.54	Highest 72.7	74.0
Lowest 29.91	29.20	Lowest 17.4	29.0
		Canada.	
		U.C. L.C.	
		42.3 deg. 39.5 deg.	
		72.7	
		62.7	
		17.4	
<b>MAY.</b>			
Mean height 29.77 inch	29.90 inch	Mean temperature 37.5 deg.	54.0 deg.
Highest 30.22	30.38	Highest 76.8	70.0
Lowest 28.13	29.16	Lowest 28.6	33.0
<b>JUNE.</b>			
Mean height 29.77 inch	30.02 inch	Mean temperature 49.8 deg.	58.7 deg.
Highest 30.14	30.46	Highest 82.5	90.0
Lowest 29.22	29.60	Lowest 37.0	37.0

METEOROLOGICAL AVERAGES.

JUNE.

Mean height	29,77 inch	30,02 inch	Mean temperature	49,8 deg.	58,7 deg.	60,4 deg.	63,6 deg.
Highest	30,14	30,46	Highest	74,0	90,0	82,5	82,2
Lowest	29,22	29,60	Lowest	29,8	37,0	35,5	35,5

METEOROLOGICAL AVERAGES.

JULY.

Thermometer.		Barometer.	
Newfoundland.	England.	Newfoundland.	England.
Mean height	29,79 inch	Mean temperature	57,4 deg.
Highest	30,18	Highest	79,5
Lowest	29,37	Lowest	31,8

AUGUST.

Mean height	29,83 inch	Mean temperature	58,3 deg.
Highest	30,21	Highest	78,3
Lowest	29,35	Lowest	33,5

SEPTEMBER.

Mean height	29,83 inch	Mean temperature	58,3 deg.
Highest	30,29	Highest	75,3
Lowest	29,32	Lowest	33,5

**METEOROLOGICAL AVERAGES.**

**OCTOBER.**

Barometer.		Thermometer.		Canada.	
<i>Newfoundland.</i>	<i>England.</i>	<i>Newfoundland.</i>	<i>England.</i>	<i>U.S.</i>	<i>L.C.</i>
Mean height 29,89 inch	29,77 inch	Mean temperature 44,0 deg.	48,9 deg.	43,8 deg.	44,3 deg.
Highest 30,31	30,61	Highest 78,3	68,0	67,9	62,3
Lowest 29,26	28,74	Lowest 24,0	27,0	21,2	

**NOVEMBER.**

Mean height 29,67 inch	29,77 inch	Mean temperature 34,0 deg.	42,9 deg.	35,7 deg.	32,3 deg.
Highest 30,27	30,27	Highest 57,0	62,0	57,2	46,2
Lowest 28,90	29,08	Lowest 24,0	23,0	11,8	

**DECEMBER.**

Mean height 29,65 inch	29,69 inch	Mean temperature 2,7 deg.	39,8 deg.	27,4 deg.	17,2 deg.
Highest 30,36	30,32	Highest 46,3	55	45,3	
Lowest 28,88	29,12	Lowest 7,6	17	0,8	8,9

OFF  
GOV  
Sir J  
K  
na  
COL  
Ch  
Of  
How  
HER  
The

**DECEMBER.**

Mean height	29.65 inch	29.69 inch	Mean temperature	2.7 deg.	39.8 deg.	27.4 deg.	17.2 deg
Highest	30.36	30.32	Highest	46.3	55	45.3	
Lowest	28.88	29.12	Lowest	7.6	17	0.8	8.9

**OFFICERS OF THE CIVIL GOVERNMENT.**

**GOVERNOR, VICE ADMIRAL, AND COMMANDER IN CHIEF.**

**Sir JOHN GASPARD LEMARCHANT, Knight, and Knight Commander of the Orders of St. Ferdinand, and of Charles the Third of Spain.**

**PRIVATE SECRETARY.**

**Edward E. Rushworth.**

**COLONIAL SECRETARY AND CLERK OF THE EXECUTIVE COUNCIL.**

**Honourable James Crowdy.**

**COLONIAL SECRETARY'S OFFICE.**

**Clerks—Christopher Ayre, Joseph W. Crowdy. Office Keeper—Valentine Born. Messenger—J. Howson.**

**COLONIAL TREASURER.**

**Robert Carter, M. G. A.**

**SURVEYOR GENERAL.**

**Honourable Joseph Noad.**

**HER MAJESTY'S EXECUTIVE AND LEGISLATIVE COUNCILS.**

- The Hon. the Commandant, (Lieut.-Col. Law.)**
- “ **William Thomas**
- “ **James Crowdy, (Colonial Secretary.)**
- “ **Joseph Noad, (Surveyor General.)**
- “ **William Bickford Row, (Q.C.)**
- “ **E. M. Archibald, (Attorney General.)**



## MEMBERS OF THE HOUSE OF ASSEMBLY.

*St. John's*—Laurence O'Brien, John Kent, (Speaker), and Robert John Parsons.

*Conception Bay*—James L. Prendergast, Edmund Haurahan, Nicholas Molloy, and Richard Rankin.

*Trinity Bay*—Thomas B. Job.

*Bonaville*—Robert Carter, R. N.

*Fogo*—George Henry Emerson.

*Ferryland*—Peter Wiuser.

*Placentia and St. Mary's*—Ambrose Shea, and John Delaney.

*Burin*—Joshua George Falle.

*Fortune Bay*—Hugh William Hoyles.

## OFFICERS OF THE LEGISLATIVE COUNCIL.

Clerk..... Christopher Ayre.

Usher of the Black Rod..... F. R. Renzie.

Master in Chancery..... Brynn Robinson, Q.C.

Door-keepers & Messengers. V. Borne, D. Rogers.

## OFFICERS OF THE HOUSE OF ASSEMBLY.

Clerk..... John Stuart.

Assistant Clerk..... Richard Holden.

Sergeant at Arms..... Elias Rendell.

Solicitor..... F. B. T. Carter.

Doorkeepers..... W. Dalton, and P. Brown.

Messenger..... Michael Power.

ASSEMBLY.

Kent, (Speak-

gast, Edmund  
and Richard

Shea, and

COUNCIL.

er Ayre.

binson, Q. C.  
, D. Rogers.

SEMBLY.

P. Brown.

**CUSTOMS' DEPARTMENT.**

Collector—John Kent.

Landing and Tide Surveyor—John Canning.

Senior Landing Waiter—George Bennett.

Second Landing Waiter—Edward J. Monte.

First Clerk and Warehouse Keeper—James S. Hayward.

Second Clerk—James Prendergast.

Lockers—R. Furgeaux, and P. McKie.

Authorised Broker—D. P. Marett.

Comptroller of Customs and Navigation—George J. Hayward.

First Clerk and Searcher—James Bayly.

Second Clerk and Searcher—Joseph R. Mullins.

**SUB-COLLECTORS AT THE OUTPORTS.**

Twillingate ..... Samuel Prowe.

Trinity ..... Robert Bayly.

Carbonear ..... Donald Bethune.

Brigus ..... Joshua Green.

Ferryland ..... Robert Carter.

Placentia ..... William G. Bradshaw.

Burin ..... Thomas Birken.

Little Bay ..... Thomas E. Gaden.

Harbour Grace ..... Earl Brown, [Acting.]

Fogo ..... James M. Winter.

Greenspond ..... Lorenzo Moore.

LaPoile ..... Thomas Reid.

Lamaline ..... James Winter.

Gaultois ..... Thomas Winter.

**PREVENTIVE OFFICERS.**

Bay Bulls ..... John L. McKie.

St. Mary's ..... H. Murch.

Bonavista ..... William Sweetland.

## LAW DEPARTMENT.

### SUPREME COURT.

Chief Justice—Honorable Francis Brady.

Assistant Judges—Honorable A. W. DesBarres,  
and James Simms.

Attorney General—Honorable E. M. Archibald.

Solicitor General—H. A. Emerson.

Queen's Counsel—Hon. W. B. Row, and B.  
Robinson.

Chief Clerk and Registrar of Supreme and Cen-  
tral Circuit Courts—Charles Simms,

Chief Clerk and Registrar Northern Circuit Court  
—John Stark.

Chief Clerk and Registrar Southern Circuit  
Court—George Simms.

Crier of Supreme Court and Tipstaff—J. Hayse.

### BARRISTERS OF THE SUPREME COURT.

#### ST. JOHN'S.

Hon. Attorney General	James Simms, Junr.
Solicitor General	R. R. W. Lilly
Hon. W. B. Row, Q. C.	Philip F. Little
Bryan Robinson, Q. C.	Harcourt Mooney
Charles Simms	Allan Fraser
George Henry Emerson	John Little
Theophilus Stewart	Robert Holden
Hugh William Hoyles	George Hogsett
F. B. T. Carter	Thomas J. Kougl.
J. S. Stevens	Alexander Fraser

#### HARBOUR GRACE.

Alfred Mayne	J. Hayward
Richard Anderson	Henry C. Watts.

## SHERIFFS.

*Central District*—Benjamin G. Garrett; *Northern District*,—Garland C. Gaden; *Southern District*,—John Stevenson.

## MASTERS IN CHANCERY.

B. Robinson, Q.C., G. H. Emerson, C. Simms, and H. A. Emerson, (Solicitor General).

## VICE ADMIRALTY COURT.

*Judge*.—The Chief Justice for the time being; *Registrar*,—P. W. Carter; *Marshal*,—Christopher Ayre.

## NOTARIES PUBLIC.—ST. JOHN'S.

C Simms, M C	G F Bown	Edward Morris
Hon W B Row, Q. C.	H Devereux	G J Hogsett
John Boyd	F B Carter	Wm H Mare
B Robinson, QC	P Rogerson	John Little
G H Emerson	W J Ward	Philip F Little
H W Hoyles	James Simms Jr	S G Archibald
T Stewart	R R W Lilly	M W Walbank
R Prowse	S J Daniel	T J Kough
	K McLea Jr	A Fraser

## OUTPORTS.

*Harbour Grace*—A Drysdale, J Hayward. *Carbonear*—T Newall, H C Watts. *Ferryland*—Robert Carter. *Twillingate*—Thomas M Lyte, John Peyton. *Burin*—William Hooper. *Placentia*—W G Bradshaw. *Fortune Bay*—P Toeque. *Southern District and Labrador*—Ebenezer Winton and William Henry Ellis.

CLERGY.

CHURCH OF ENGLAND.

Lord Bishop of Newfoundland (including the Bermudas)—The Right Rev. EDWARD FIELD, D.D., late Fellow of Queen's College, Oxford. Bishop's Commissary and Vicar General—Rev T F H Bridge, M.A. Registrar of Diocese—Rev C Blackman, M.A. Bishop's Chaplains—Rev T F H Bridge, and Rev C Blackman.

DEANERY OF AVALON.

Town of St. John—Rev T F H Bridge, M.A., (Rector and Rural Dean); Rev C Blackman, M.A. (St. Thomas's Church); Rev G M Johnson, (Curate of St. John's.)

Out-harbour of St. John—Rev A C Bayly, (Petty Harbour and Torbay); Rev B Fleet, (Portugal Cove, &c.); Rev William Shannon, (Pouch Cove).

Ferryland, &c.—Rev H H Hamilton, B. A. South Shore of Conception Bay—Rev G Carter. Supernumeraries—Rev H Tuckwell, Rev Julian Moreton, and Rev W Dunn.

DEANERY OF CONCEPTION BAY.

Harbour Grace—Rev J Chapman, (Rural Dean). Carbonear—Rev J C Harvey. Hearts Content, &c.—Rev H Lind. Bay de Verd—Rev O Rowse. Bishop's and Island Cove—Rev J Kingwell. Spaniard's Bay, &c.—Rev W Taylor. Port de Grave, &c.—Rev J Vicars. Bay Roberts—Rev M Blackmore. Brigus, &c.—Rev W J Hoyles.

DEANERY OF TRINITY BAY.

Trinity—Rev T M Wood. Bonavista—Rev B Jones. Catalina—Rev W Netten. King's Cove;

&c.—Rev B Smith. Greenspond, &c.—Rev J Gilchrist, M.A., and Rev Mr Dyer. English Harbour and Salmon Cove—(vacant.)

## DEANERY OF NOTRE DAME BAY.

Twillingate, &c.—Rev T Boone, (Rural Dean). Fogo, &c.—Rev E Sall. Moreton's Harbour, &c.—Rev J Kingwell, Jr.

## DEANERY OF PLACENTIA BAY.

Burin, &c.—Rev J C A Gathercole, Rev W Rozier. Harbour Bauliff.—Rev W K White. Placentia, &c.—(vacant.)

## DEANERY OF FORTUNE BAY.

Harbour Britain, &c.—Rev G M Mountain, M.A. (Rural Dean); Rev G Addington. Belloram—Rev J Marshall. The Burgeois—Rev J Cunningham. La Poile—Rev T Appleby. St George's Bay—Rev W Meek. Hermitage—Rev E Colley.

## LABRADOR.

Forteau—Rev Algernon Gifford.

## THEOLOGICAL INSTITUTION.

Principal—Rev T S Jones, M.A. Lecturer in Divinity—Rev H Tuckwell. Students and Lay Readers—Mr Blackman, Mr Brown, Mr Coombe, Mr Darell, and Mr Mudge.

## COLLEGIATE SCHOOL.

Head Master—Rev H Tuckwell. Assistant do—Mr Brown.

## NEWFOUNDLAND CHURCH SOCIETY.

Patron—His Excellency the Governor. President—The Lord Bishop of the Diocese. Vice Presidents—The Rural Deans. Treasurer—G T Brooking. Secretary—Rev T F H Bridge, M.A. Librarian—Rev G M Johnston. Keeper of the Depot—Mr McCoubrey.

**CHURCH OF ENGLAND SCHOOL SOCIETY FOR  
NEWFOUNDLAND AND THE COLONIES.**

Visitor—The Lord Bishop. Superintendent—  
Rev T F H Bridge, M.A.

**ROMAN CATHOLIC.**

District of St John's—Right Rev M A Fleming, D. D., Bishop of Newfoundland; Right Rev John T Mullock, D. D., Coadjutor Bishop; Rev Messrs J Forristal, Jeremiah O'Donnell, K Walsh, J Condon. Portugal Cove—Rev T O'Connor. District of Brigus—Very Rev D Mackin, V. G., Rev E O'Keefe, (Harbour Main). District of Harbour Grace and Carbonear—Very Rev Charles Dalton, Rev Messrs J Cummin, ——. District of Northern Bay—Rev B Dully. District of King's Cove—Rev Messrs T Waldron, J Scanlan (Bonavista.) District of Tilton Harbour—Rev P Ward. District of Bay Bulls—Rev P Cleary. District of Ferryland—Rev J Murphy (Fermeuse), ——. (Ferryland). District of Trepassey—Rev J O'Neill. District of St Mary's—Rev J Ryan. District of Placentia—Rev Messrs P Nowlan, W Forristal. District of Merasheen—Rev J Walsh. District of Burin—Rev M Berny, M Cullen. District of Torbay—Rev E Troy.

**CHURCH OF SCOTLAND.**

St. Andrew's Church, St. John's.—(vacant.)

**FREE PRESBYTERIAN CHURCH.**

St. John's—Rev. A. S. Muir.

**CONGREGATIONAL CHURCH.**

St. John's—Rev. George Schofield.

**WESLEYAN MISSIONARIES.**

St. John's—Rev. Richard Williams, Chairman  
 and General Superintendent, Rev William Faulk-  
 ner, Rev Elijah Britton, Carbonar—Rev James  
 Norris, Harbour Grace—Rev W S Shielstone,  
 Blackhead—Rev Thomas Anglin, Island Cove—  
 Rev S W Sprague, Perlican—Rev James Eng-  
 land, Port de Grave—Rev John S Adly, Belugas  
 —Rev John Snowball, Bonavista—Rev Adam  
 Nightingale, Burin—Rev John Brewster, Grand  
 Bank—Mr Thomas FOX, (Local Preacher), Twil-  
 lington and Green Bay—Rev J S Peach, Trinity  
 —vacant.

**LAYMEN LICENSED TO CELEBRATE MARRIAGE.**

(Under Colonial Act 3, Wm. 4, Cap. 10)

W G Bradshaw, J. P., Placentia; W Swet-  
 land, J. P., Bonavista; J Pilly, J. P., Harris Har-  
 bour; T E Gaden, J. P., Harbour Breton; J Pay-  
 ton, J. P., Twillingate; J Galton, Port-aux-Basques.



## MILITARY ESTABLISHMENT.

Commandant, **P. W.** Lieutenant Colonel R. Law, K.H., Commanding Royal Newfoundland Companies. Fort Major—Lieutenant Jenkins, R.N.C. Assistant Commissary General—Oliver Goldsmith. Deputy Assistant Commissary General—William Hewetson.

### ROYAL ARTILLERY.

Captain—G R Kennedy. Lieutenants—G Rotton, J DeL Sanderson.

### ROYAL ENGINEERS.

Captain Commanding—G S Whitmore. Lieutenants—J G Jervais and M S Whitmore.

### ROYAL NEWFOUNDLAND COMPANIES.

**P. W.** Lieutenant Colonel Commanding, Robert Law, K.H. Captains—R Saunders, H B Chambers, — West. Lieutenants—W Jenkins, W S Bold, J Gillespie, M Petrie, C F Tyler, W J Coen, and T Johns. Ensigns—C H Martin, R A Law, G Priestly. Acting Paymaster—Lieutenant W S Bold. Adjutant and Acting Quarter Master—Lieutenant J Gillespie. Surgeon—C C H Grant. Assistant Surgeon—T Spence. Lieutenant W J Coen, Commanding Detachment at Harbour Grace.

### CIVIL DEPARTMENTS OF THE ARMY.

Garrison Chaplain—Rev C Blackman, A. M. Deputy Ordnance Storekeeper and Barrack Master—T H Tunbridge. Ordnance Clerk—Noel Hammer. Clerk of the Works—J Baker. Established Clerk—W Commis. Office Keeper—B Hyland. Respective Officers of the Ordnance—Commanding Royal Engineer; Commanding Officer of Royal Artillery; Deputy Ordnance Storekeeper. Commissariat Issuer—J Stickley. Commissariat Conductor—J Thompson.

NOTE—**P** denotes Peninsula. **W** Waterloo.

COMMANDER IN CHIEF OF HER MAJESTY'S  
FLEET ON THE WEST INDIA AND NORTH  
AMERICAN STATION.

Right Honourable Thomas Earl of Dundonald,  
G.C.B., Vice Admiral of the Red.

POST OFFICE DEPARTMENT.

Deputy Post Master General—William L Solomon  
Clerk—William Henry Brace.

The Newfoundland Mails are conveyed to and from Halifax by one of the line of Royal Mail Screw Steam-Packets appointed to run between Halifax and Bermuda, and Halifax and St. John's. The Steamer leaves Halifax for St. John's immediately after the arrival of the homeward bound Mail (from Boston), and after remaining there 48 hours from the time of arrival, proceeds back to Halifax with the return Mails, calling at Sydney, C.B. On the average the passage is performed in about 3½ days. Passage from St John's to Sydney, £3; from St. John's to Halifax, Cabin £5; Steerage £2 10s. Agents—Halifax, S. Cunard; St. John's, Messrs. Hame, Johnston & Co.

COMMISSIONERS OF PUBLIC BOARDS.

COLONIAL BUILDING.

Hon James Crowdy, Chairman; T Bennett,  
Hon William Thomas, Hon W B Row; T B Job,  
L O'Brien, T Glen, P McBride. Clerk—J W  
Crowdy. Architect—James Purcell. Inspector—  
P Kough.

**ST. JOHN'S ACADEMY.**  
 Visitor—His Excellency the Governor. Directors—Robert Carter, Ambrose Shea, H W Hoyles, T Bennett, T Job, J Kent, J Sauri, and J Rochford, M.D. Senior Master—C D Newman, M.A. Junior Master—J V Nugent. Secretary—Harcourt Mooney.

**FOR SUPERINTENDING REPAIRS OF GOVERNMENT**

**HOUSE.**  
 Honorables J Crowley and W Thomas, and L O'Brien, and R Carter.

**PILOTS.**  
 J B Bulley, L O'Brien, T Williams, N Stabb.

**TABLES OF RATES OF PILOTAGE IN AND OUT OF THE PORT OF ST. JOHNS.**

*On Merchant Shipping.*

Vessels under 80 tons new to 100 tons old, £2 0 0

Ditto from 80 to 130 new, or 100 to 150 old 2 10 0

Ditto from 130 to 180 new, or 150 to 200 old 3 0 0

Ditto from 180 to 230 new, or 200 to 250 old 3 5 0

Ditto from 230 to 300 new, or 250 to 300 old 3 10 0

Ditto from 300 new, to 300 old, or upwards 4 0 0

Coasters half the above in proportion to tonnage.

*His Majesty's Ships of War.*

Under 6th Rate £2 10 0

4th, 5th, and 6th Rates 3 10 0

Ships of the Line, 1st, 2nd, and 3d Rates 5 0 0

**RELIEF OF THE POOR.**

Honorables James M Spearman and Joseph Noad, and the Stipendiary Magistrates of St John's.

**COMMISSIONERS OF LIGHT HOUSES.**

T Bennett, Chairman; H P Thomas, T Ridley, N Stabb. A Shea, Secretary.

**KEEPERS.**  
 Cape Spear—T Cantwell. Fort Amherst—P Roche. Harbour Grace Island—R Oak. Cape Bonavista—J White.

## TABLE OF LIGHT DUES.

Three pence per Ton on all vessels entering any Port or Harbour of the Colony, except Coasting and Sealing vessels; but not to be levied more than twice in any one year.

## COASTING AND SEALING VESSELS.

Of 90 Tons and upwards	£1 0 0	per annum.
Of 60 and under 90 Tons	0 15 0	...
Under 60 Tons	0 10 0	...

## DESCRIPTION OF THE LIGHTS.

*Fort Amherst.*—This is a Stationary Light, on the Southern head of the entrance of St. John's Harbour.

*Cape Spear.*—This is a powerful Revolving Light burning at an elevation of 275 feet above the level of the sea, and showing a brilliant flash at intervals of one minute. In clear weather it may be seen from sea, in any direction, at the distance of thirty five miles.

*Harbour Grace.*—This is a powerful Fixed Light situate on Harbour Grace Island, in Conception Bay, extending Eastwardly or seaward in a direction by Compass from North to South West.

*Bonavista.*—This Light revolves every two minutes, showing a red and white flash alternately; and it is elevated 150 feet above the level of the sea.

*St. Peter's.*—A Light House has been erected by the French Government on Gallantry Head, near Cape Noir. The Light is a fixed one. It burns at an elevation of about 210 feet above the level of the sea. It may be seen (in passing by the S.) from W.N.W. to N.N.E. at the distance of 18 or 20 miles in clear weather. In passing by the N., it is shut in by high land from N. N. E. to W. N. W.

It is in contemplation to erect a Light House on Cape Race with a Fog Bell.

## ELECTORAL DISTRICTS.

### DISTRICT OF ST. JOHN'S.

#### STIPENDIARY MAGISTRATES.

St. John's—P W Carter, P Doyle, Thomas Bennett. Bay Bulls—J L McKie.

#### JUSTICES OF THE PEACE.\*

R Job, N Gill, R Carter, (R.N.), Peter McBride, Walter Grieve, T B Job, L O'Brien.

Clerk of the Peace—A Hogsett, (R R W Lilly, Acting.) Coroners—A Hogsett and Joseph Shea, M.D; Bay Bulls—M Williams. High Constable—J Finlay. Gaoler—William Magill. Medical Attendant on Gaol—E Kielley.

Inspectors of Pickled Fish—T Williams, William Magill, J Pitts, James Murphy, William Shea, George Daymond, D Dwyre, W McPherson, J Curtis, Jr. (Portugal Cove.)

Assayer of Weights and Measures—J Finlay. District Surgeon—Dr Carson. General Supervisor of Streets—James Douglas.

#### BOARD OF ROAD COMMISSIONERS.

James Douglas, Chairman, Hon Joseph Noad, and C F Bennett, John Kent, B Robinson, Laurence O'Brien, Walter Grieve, Nicholas Gill, Thomas Glen, Charles Simms, John Harding, Patrick

\* The Members of Her Majesty's Council, and the Judges of the Supreme Court, are all in the Commission of the Peace for the Central, Northern, and Southern Districts of the Island.

Kough, Simon Morris, Patrick Mullooney, John O'Mara, Patrick L Power, David Reid: Surveyor—T Byrne. Inspector—E Tobin.

BOARDS OF EDUCATION.

Protestant—Rev T F H Bridge, Rev Richard Williams; Rev G Schofield, Hon W B Row, H P Thomas.

Roman Catholic—The Right Rev John T Mullock, D. D. Coadjutor Bishop, John Kent, Lawrence O'Brien, J. Dillon, Patrick Kough, Richard Howley.

DIRECTORS OF ST. JOHN'S HOSPITAL.

Chairman, Vice President.

T Bennett, W Gilve, John Stuart, L O'Brien, N Stabli, B Scott, J Barron, Peter McBride, R Howley, W Warren, Jr., Thomas Row, Thomas Allen. Surgeon—E Kielley. Secretary—A Shea.

LUNATIC ASYLUM.

Physician—H H Stabli, M.D. Manager—W Stairs. Matron—Mrs Stairs.

TRUSTEES OF BOTANIC GARDENS.

Hon William Thomas, and John Stuart.

BOARD OF APPRAISERS.

B Scott, J Clift, F R Rennie, R Perchard, T Glen. Secretary—John M. Brine.

DISTRICT OF CONCEPTION BAY.

STIPENDIARY MAGISTRATES.

Harbour Grace—T Danson, R Pinsent. Carbonear—Joseph Ryan. Brigis—C Cozens.

JUSTICES OF THE PEACE.

W Stirling, J Green, R Pack, R Rapkin, T Hutchings, J Stark, R Brown, John Munn, Nicho.

40 OFFICERS OF ELECTORAL DISTRICTS.

Ins. Molloy, William S. Green, James Cormack,  
William Donnelly.

CLERKS OF THE PEACE.

Harbour Grace—A. Mayne. Brigus—W. T. Stentford

CORONERS.

Harbour Grace—J. Stark. Brigus—J. Green.

Western Bay—John Curtis.

High Constable—A. Webber. Gaoler—R. Brace.  
Medical Attendant on Gaol—W. Stirling, M. D.

Deputy Surveyor of Crown Lands—J. Green,  
(Brigus).

CUSTOMS.

Harbour Grace—Sub-Collector and Acting  
Warehouse-keeper, E. E. Browne. Brigus—Sub-  
Collector, J. Green. Carbonear—Sub-Collector, D.  
Rehure.

INSPECTORS OF PICKLED FISH.

Harbour Grace—H. Stowe. Carbonear—Simon  
Levi. Brigus—G. Bursell.

BOARDS OF ROAD COMMISSIONERS.

Harbour Main (from Holyrood to Salmon Cove  
Bridge)—John Murphy, C. Holyrood, Peter Eze-  
kiel, Patrick Strapp, James Woodford, John Byrne.

Brigus (Salmon Cove Bridge to Spaniard's Bay  
Gut Bridge)—John Leamon, C., Nathaniel Man-  
den, James Hearn, James Keeping, Jas. Cormack.

Harbour Grace—A. Drysdale, C., D. Green, R.  
Harrabun, F. Lynch, M. Goss. Harvey Street—  
J. L. Piendergast, R. J. Piment, W. Stirling.

Carbonear (South Side Main Road to Spout  
Cove)—W. W. Bennister, C., John McCarthy, John  
Rorke, William Brown, John Casey, G. Forward.

Western Bay (Spout Cove to Main Brook)—  
David Branfield, James Penny, Richard Rankin,  
Henry Thompson.

Main Brook to Bay de Verds—Thomas Hotel-  
ings, C., — O'Neil, — Moore, Richard Rankin.

BOARDS OF EDUCATION.

Brigus.—Protestant—Rev W. Hoyles, Rev J Snowball, Robert Brown, John Lennon, W S Mills, Joshua Green. — Wells. Roman Catholic —Very Rev D Mackin, Dr Molloy, John Murphy, Patrick Strapp, R. Mandeville, Rev E O'Keefe, and James Cormack.

Harbour Grace.—Protestant—Rev John Chapman, Rev W Shenstone, T Ridley, William Sterling, R Anderson, Alfred Mayne, John Munn. Roman Catholic—Very Rev C Dalton, Daniel Green, Rodger Harrahan, William Cormack, Arthur Thomey, Patrick Devereux, F Lynch.

Carbonear.—Protestant—Rev J C Harvey, Rev J Rouse, Rev J Norris, Rev S W Sprague, Rev T Anguin, W W Bemister, John Rourke, Edward Pike. Roman Catholic—Rev B Duffy, R Harrahan, Joseph Ryan, John McCarthy, Dr Wright, William Brown.

COMMISSIONERS OF GRAMMAR SCHOOLS.

Harbour Grace.—Thomas Ridley, John Munn, J L Prendergast, W Sterling, Alfred Mayne, Daniel Green, W Donnelly. Professor—J T Roddick.

Carbonear.—Edward Harrahan, K. Berry, M.D., John McCarthy, W. W. Bemister, Dr Wright, John Rorke, Daniel Walsh. Professor—A O'Donnell.

DISTRICT OF TRINITY BAY.

STIPENDIARY MAGISTRATE.

B. Sweetland.

JUSTICES OF THE PEACE.

W Kelson, J Regan, J Quinlan, J Tilly, J Mow, R Ollerhead, A Hackel, F K Hepburn, A Bremner.



Clerk of the Peace—R Bayly. Coroner—B Sweetland. Gaoler—U Gahnger. Deputy Surveyor of Crown Lands—B Sweetland. Sub-Collector of Customs—B Bayly.

Inspectors of Pickled Fish.—Trinity—J Hart; Hans Harbour—M Tilly; Heart's Content—J Wiseman.

#### BOARD OF ROAD COMMISSIONERS.

Old Perlican (from Grates Cove to Hans Harbour)—Stephen March, C, John Collins, Thomas Cooper, S Reppell.

Heart's Content (from Hans Harbour to Heart's Delight)—Robert Ollerhead, C, Richard Underhay, Moses Moore, John Hopkins, George Ayre, John Bemister, John Ke land.

Trinity Bay, North.—W Stoneman, C., F K Hepburn, Robert Bayly, William Penny.

Road from New Harbour to Dildo Cove—Charles Newhook, Andrew Hackett.

#### BOARDS OF EDUCATION.

Trinity Bay, North.—Protestant—Rev. T M Wood, F K Hepburn, A Brunker, W Kelson, B Sweetland, R Bayly.

Roman Catholic—Rev J Scanlan, M Brine, John Murphy, Patrick Murphy, John Egan, John Power.

Trinity Bay, West.—Protestant—Rev. H Lind, R Ollerhead, J Hopkins, R Underhay, C Newhook, J Wiseman, John Bemister.

Trinity Bay, South.—Protestant—Rev H Lind, Rev J England, Stephen March, William Meadows, George Ayre, John Tilly.

### DISTRICT OF BONAVISTA BAY.

#### STIPENDIARY MAGISTRATE.

William Sweetland.

#### JUSTICES OF THE PEACE.

S M Ailin, N Smith, J Cox, J T Oakley, W

eroner—B  
 uty Shr  
 Sub—Col  
 J Hart  
 outent—J  
 and Har  
 Thomas  
 o Heart's  
 Under  
 rge Ayre,  
 C., F K  
 —Charles  
 T M  
 Nelson, B  
 ine, John  
 an, John  
 H. Lind,  
 C New  
 H Lind,  
 am Mea  
 Y.  
 W K  
 H Olin  
 kley, W

OFFICERS OF ELECTORAL DISTRICTS. 43  
 STOUTSIED JAROTORS NO BRONTO

Brown, J Skelton, Lorenzo Moore, Joseph Shears,  
 J Stewart, D Candow.

Clerk of the Peace—John Lawrence. Coroner—  
 Dr J Winter, (Greenspond). Deputy Surveyor of  
 Crown Lands—W Sweetland. Sub-Collector of  
 Colonial Revenue—L Moore (Greenspond). Pre-  
 ventive Officer—William Sweetland (Bonavista).  
 Inspectors of Pickled Fish—N Smith, J In Oak-  
 ley, Greenspond; J Connors, King's Cove.  
 Keeper of Light House on Cape Bonavista—J  
 White.

BOARDS OF ROAD COMMISSIONERS.

Bonavista to Catalina—William Sweetland, C.,  
 Joseph Shears, Archibald Arnott, Alexander Brem-  
 ner.

Bonavista to King's Cove—Archibald Arnott,  
 C., W Sweetland, Joseph Shears, James Stewart,  
 William Brown.

In and through King's Cove—James Stewart,  
 William Brown, James Lawton.

Keels to Broad Cove—Thomas Walley, James  
 Connors, John Murphy.

Greenspond—E Wills, Nathaniel Smith.

Salvage—James Oldford, T Baggs.

Tickle Cove to Main Line from King's Cove—  
 D Candow, J Skelington.

Tickle Cove to Open Hall—D Candow, J Skel-  
 ington, T Power.

Tickle Cove—D Candow, J Skelington.

Cape Freels to Cabbler's Island—J Ridout, W  
 Hunt, R Vincent.

Flower Island and Fool's Island—J Spurrell, W  
 Kane.

Swain's Island—T Bishop, J Winsor, W Tiller.

Deer Island—J Pickett, C Feltham.

Flat Island—J Pike, J Sunson.

Barrow Harbor and towards Salvage—William  
 Lang, William Doyle, H Wills.

Broad Cove to King's Cove—Larkin,  
 Ryan.

Plate Cove to Trinity Bay—D Candow, J Skafington, W Palmer.

**BOARDS OF EDUCATION.**

to Bonavista Bay, North—Protestant, Rev J Gilchrist, Thomas Wills, Nathaniel Smith, J F Oakley, Rev William Dyer, Archibald Campbell.

Bonavista Bay, South—Protestant, Rev A Nightingale, Rev Bertram Jones, Joseph Stearn, Archibald Arnot, James Sain, James Stewart, David Candow.

Roman Catholic—Rev T Waldron, William Hartley, James Connors, Michael Murphy, John Ryan, John Murphy, John Sullivan.

**DISTRICT OF FOGO.**

**STIPENDIARY MAGISTRATE.**

J Payton, (Twillingate.)

**JUSTICES OF THE PEACE.**

S Lawler, J Martin, J Ball, S Prowse.

Clerk of the Peace—A A Pearce, (Conover & William Sterling, M.D., Sub-collector of Customs—S Prowse, (Twillingate.) Collector of Colonial Revenue—J M Winter, (Fogo.) Deputy Surveyor of Crown Lands, John Payton.

Inspectors of Pickled Fish—J Ludlow, Fogo; J Huddery, Twillingate.

**BOARDS OF ROAD COMMISSIONERS.**

Twillingate—S Prowse, John Pearce.  
Fogo—Stephen Lawler, J M Winter, P Burke.

**BOARDS OF EDUCATION.**

Protestant—Rev Thomas Boone, Rev J S Peach, John Payton, J Colborne, Samuel Prowse, J Young, Rev J Kingwell, jr.

\*

\*

**Roman Catholic**—Rev P. Ward, John Brine, John Burke, Patrick Burke, Patrick Dwyer, J. Fitzgerald, N Fitzgerald.

**Protestant**—Rev W. J. Hayes, Stephen Lawler, James M Winter, Thomas Humphreys, John Bennett, John Freke, sen., George E. Raboult.

**DISTRICT OF FERRYLAND.**

**STIPENDIARY MAGISTRATE.**

Robert Carter.

**JUSTICES OF THE PEACE.**

P Winsor, J W Saunders, A Goodridge, M Morry. Clerk of the Peace—H G Clow. Coroner—J Stevenson, Gaoler—F Geary. Sub-Collector of Customs—R Carter. Deputy Surveyor of Crown Lands, R Carter.

**BOARDS OF ROAD COMMISSIONERS.**

**Bay Bulls to La Manche**—Michael Conry, C., Michael Brine, sen., Thomas Driscoll, Thomas Avery, James Carew.

**Ferryland (La Manche to Renews)**—M Morry, C., James H Carter, T Norris, M Brazil, E. Power.

**Renews to Trepassay**—J W Saunders, C., A Goodridge, Owen O'Neill.

**Trepassay to Renews**—G Simms, C., G Dutton, J Devereux.

**BOARDS OF EDUCATION.**

**Protestant**—Rev H H Hamilton, Robert Carter, Matthew Morry, J H Carter, J W Saunders, A Goodridge, James Carter.

**Roman Catholic**—Rev J Murphy, Michael Devereux, J Doyle, J Cashio, E Condon, H O'Neal, Philip Jackman.

Bay Bulls—Roman Catholic—Rev P Cleary, M William, M Coody, W Dann, Michael Driscoll, J Blackler, F Driscoll.

## DISTRICT OF PLACENTIA AND ST. MARY'S.

### STIPENDIARY MAGISTRATES.

F L Bradshaw, Placentia. H Murch, St. Mary's.  
JUSTICES OF THE PEACE.

G Simms, J Murphy, W G Bradshaw, A Chambers, W Lush, Patrick Hogan.

Clerk of the Peace—L Collins. Coroner—(vacant.) Gaoler—L Collins. Sub-collector of Customs—W G Bradshaw. Preventive Officer of Customs—H Murch, St. Mary's.

Inspectors of Pickled Fish—T Walsh, Placentia, G LeMessurier, Isle of Valen; M Shea, Little Placentia, E Hennessey, Merasheen, James Murphy, Placentia, Abraham LeMessurier.

### BOARDS OF ROAD COMMISSIONERS.

Barren Island—Alexander Chambers, C., Nicholas Condy, Richard Mackay.

Merasheen—A Chambers, C., John Movellet, E Hennessey.

Presque to Oliver's Cove—A Chambers, C., J Masters, T Lennard.

Isle of Valen—A Chambers, C., G LeMessurier, P Lennard.

Great to Little Paradise—John Power, Joseph Goldsworthy.

Woody Island—A Chambers, C., Levi Andrews, R Walsh.

Oderin—Thomas Collins, Nelson Bailey.

Great Placentia to Distress Cove.—Luke Collins, C., W G Bradshaw, Patrick Hogan, J Rielley, (Herring Bay.)

Great to Little Placentia and Pond Head—James Murphy, John Rielley, Alexander Burke.

St. Mary's Harbour (Holyrood and Point La Haye).—William Lush, Robert Kent, Win Fewer.  
 Harbour Beaufic—Thomas Butler, Thomas E. Collett.

Harry Cove Point, and Path from Limber Grass to Harry Cove—G Curtis, Michael Deon, Edwd Quigley, and James Whealen.

To open a road from Branch to Distress Cove.—Branch—T Nash, N Power, J English. Distress Cove—J. Duffy, W. Wilsh, J Conway.

BOARDS OF EDUCATION.

Placentia.—Protestant—Rev W K White, F L Bradshaw, W G Bradshaw, James Butler, Thos E Collett, Alexander Chambers, G LeMessurier.  
 Roman Catholic—Rev Pelagius Nowlan, Rev W Forriatal, John Rielley, James Furlong, Patk Hogan, Anthony Whelan, John Rielley (Herring Bay.)

St. Mary's.—Roman Catholic—Rev J Ryan, J Walsh, Thomas Phelan, James Fagan, William Burke, Michael Fagan, Michael Murray.

TRUSTEES OF COMMERCIAL SCHOOL AT GREAT PLACENTIA.

Rev P Nowlan, F L Bradshaw, Patrick Hogan. Master—M Kelly. Average number of Scholars, 50.

DISTRICT OF BURIN.

STIPENDIARY MAGISTRATES.

W Hooper—Burin; J Blackburn, Grand Bank; S O Pack, Lamaline.

JUSTICES OF THE PEACE.

C Benning, J Thorn, James Moran.  
 Clerk of the Peace—Edward Morris. Coroner—(vacant.) Gaoler—E Glynn. Sub-Collector of Customs—T Birkett. Sub-collector of Colonial Revenue at Lamaline—J. Winter. Deputy Surveyors of Crown Lands—W Hooper, John Haddou, S O Pack.

Cts.  
 1910  
 Cleary, M  
 Driscoll, J  
 MARY'S.  
 Mary's.  
 A Cham-  
 er—(va-  
 of Cus-  
 Officer of  
 Placen-  
 sa, Little  
 es Mur-  
 Nicho-  
 velle, B  
 s, C, J  
 ssurier,  
 Joseph  
 Andrews;  
 Collins,  
 James

Inspectors of Pickled Fish—T. Darby, Burin, I  
K Moore, St Lawrence, G H Evans, Grand Bank.

## BOARD OF ROAD COMMISSIONERS.

Burin—Edward Morris, C. Clement Benning,  
Thomas Darby, John Marshall, John Power, Jo-  
shua Falle.

Grand Bank and neighbourhood—Ed Evans, C.,  
George Lake, John Patten, James Hickman.

St. Lawrence to Lamaline, and from Great to  
Little St. Lawrence—John Thorn, Henry Slaney,  
Lamaline—J Pittman, R Cake.

COMMISSIONERS FOR THE ERECTION OF A BREAK-  
WATER.

At Fortune—George Lake, John Snook, Thomas  
Rogers, James Hamlen, John Keating, John Speece.  
Grand Bank—John Patten, John Hickman, sen.,  
James Hickman, George Forsey, sen., Win Evans,  
(planter), Henry Nicholle.

## BOARDS OF EDUCATION.

Protestant—Rev John C A Gathercole, Thomas  
Darby, Philip Hollett, William Hooper, Rev John  
Brewster, Richard Falle, James Moran.

Roman Catholic—Rev Michael Berney, Cle-  
ment Benning, Edward Morris, John Power, Pa-  
trick Morris, Henry Slaney, Matthew Marshall.

## DISTRICT OF FORTUNE BAY.

## DEPENDIARY MAGISTRATE:

Thomas E Gaden.

## JUSTICES OF THE PEACE.

T Read, La Poite, Thomas Renouf, La Poite.

Clerk of the Peace—P Toque. Coroner—T E  
Gaden. Sub-collector of Customs—T E Gaden.  
Sub-collector of Colonial Revenue, (La Poite),  
T Read; (Gariois,) T Winter. Deputy Survey-  
or of Crown Lands, Charles DeLael, Port aux  
Basques.

CHARITABLE SOCIETIES,

Inspectors of Pickled Fish—J Troad, (Harbour Britain.) D Hardy (Jersey Harbour.) H Bagg (La Poile.) J. Cluist (Belloram.) J. B. Cox, Sear., (Barged Islands), Matthew Row (ditto.) John Holden (Gaultois).

BOARD OF WORK COMMISSIONERS,

Harbour Britain to Conchalgre Bay and Hermitage Cove—Andrew Ellis, C., John Chapman, William Gallop, Thomas E. Gaden, John Troad, Belloram to St. Jacques—John Cluist, John Grandy, Jr., Burgee—W. Henderson, Sear., W. Matthews.

BOARD OF EDUCATION.

Protestant—Rev G. J. Meunier, Thomas E. Gaden, John Chapman, William Gallop, Andrew Ellis, Rev John Marshal, Thomas Stevens.

Roman Catholic—Rev M. Harvey, Rev M. Cullen, P. Burke, W. Burke, P. Burke, Jr., T. Kinshel, P. Hearn.

CHARITABLE SOCIETIES, PUBLIC COMPANIES, &c.

BENEVOLENT IRISH SOCIETY—FOUNDED IN 1806.

Patron—His Excellency Sir John Gaspard La Marchant, President—J. V. Nugent, Vice President—P. Keogh, First Assistant—Edward Morris, Second Assistant—Philip F. Little, Treasurer—J. Kavanagh, Secretary—G. J. Hogsett, Chairman of Review—J. Casey, Chairman of Charity—M. Daily, Chairman of Orphan Asylum School—P. Brazil, Secretary Orphan Asylum School—Randall Green.

DORCAS SOCIETY.

Treasurer—Mrs T. Job, Secretary—Mrs Rogerson, Dispenser—Mrs C. Weston.



CHARITABLE SOCIETIES.

President—W J Macfarlane. Vice President—E Kennedy. First Assistant—John Whelan. Second Assistant—John Power. First Treasurer—John Coady. Second Treasurer—Andrew Quirk. Third Treasurer—John Mahon. Secretary—John Kennedy. President—James K. Moore. Vice President—George R McCoubrey. Treasurer—Chas Rankin. Secretary—Edwards Knight. Assistant—Dr Carson.

**PROFESSORS' SOCIETY.**  
 President—Hugh W Hoyle. Vice Presidents—James S. Cliff and John Barron. Treasurer—John B. Barnes. Chairman of Committee—John B. Barnes. Chairman of Review and Correspondence—Henry B Thomas. Secretary—N Gull, Jr. Assistant Secretary—William Pitts.

**CARBONEAR NATIVES' SOCIETY.**  
 President—H. H. Pike. Secretary—Thomas Newell, Junr.

**ST. GEORGE'S SOCIETY.**  
 President—J Bayly. Vice Presidents—Hon W Thomas and C F Rennell. Treasurer—Henry C B. Thomas. Secretary—Gilbert Clapp. Chairman of Committee of Charity—Robert Brown. Secretary and Treasurer—John C Wilmore.

**ST. ANDREW'S SOCIETY.**  
 President—Andrew Milroy. Vice President—John McWilliam. Treasurer—David Steele. Secretary—John C. Crawford. Medical Attendant—Dr. Carson. Chairman of Committee of Charity—Allan Fraser.

**AGRICULTURAL SOCIETY.**  
 Patron—His Excellency, Sir John George Parsons Marchant. President—Laurence O'Brien. Vice

Presidents—Bryan Robinson, James Douglas, Andrew Milroy, and Charles Simms; Treasurer—Thomas B. Joly; Secretary—Tethelman.

FARMERS' MILL COMPANY.

Patron—His Excellency Sir John Gasparit Le Marchant; Directors—Charles Simms, —Brite, Michael Scaddan, Michael Alley, Samuel Carson; M. D. Treasurer—James Clitt; President—Pate Kough.

JOHN'S BAPTIST CHURCH AND SOCIETY.

Patron—His Excellency Sir John Gasparit Le Marchant; President—Hon. Wm Thomas; Vice Presidents—Hon. Judge De Barros, Hon. James Crowe, Hon. William B. Row, Q. C., Thomas B. Joly, Walter Grieve, Andrew Milroy; Treasurer—N. Stubb; Secretaries—Rev. E. Breble, and J. B. Huley.

TRINITY BENEFIT CLUB—INSTITUTED 1888.

President—J. Johnson, M.D.; Vice President—E. K. Hepburn; Treasurer—W. K. Lyon; Secretary—Samuel A. Gent; Stewards—Robert Grant, J. Penny, Mark Weston, John Doherty, and R. Woolridge.

LAW SOCIETY.

Hon. Attorney General, E. M. Archibald; Solicitor General, H. A. Emerson; Hon. William B. Row, Q. C.; Treasurer; Charles Simms, Bryan Robinson, Q. C.; George H. Emerson; Hugh W. Hoyle, Secretary; F. B. R. Carter, J. Hayward, J. S. Stevens, J. Simms, Dr. Robert R. W. Lilly, W. Green, (of Halifax, N. S.), Philip K. Little, Harcourt, Mooney, Allan Fraser.

CHAMBER OF COMMERCE.

President—James J. Grieve; Vice Presidents—Peter McBride and Nicholas Sahl; Secretary and Treasurer—Robert Prowse; Hon. William Thomas; Robert Prowse, Peter McBride, Lauribce.

O'Brien, Kenneth McLean, Thomas H Job, George T Brooking, Charles F Bennett, Eugénie Harvey, Thomas Row, James J Griev, Thomas G Morry, Nicholas Stubb.

**FOREIGN CONSULS RESIDENT IN THE COLONY.**

Spain—Aaron Hoggatt (V. C.) Prussia—Benjamin Scott. United States—S G Archibald (Consul Agent.)

**CONCEPTION BAY.**

Spain—Thomas Harrison Ralley (V. C.) United States—William C St John (Consular Agent.)

**ASSOCIATION OF UNDERWRITERS—ST. JOHN'S.**

Chairman—W Grieve. Committee—Laurence O'Brien, Robert Prowse, Thomas B Job, Hon William Thomas, Peter McBride, George T Brooking. Agent—J B Bulley. Commissioner—Thomas Row. Surveyor—J Pitts. Average Starter—R Prowse. Banker—Bank of British North America.

**BRANCH BANK OF BRITISH NORTH AMERICA.**

(Opened for Business February 1837.)

Local Directors—Thomas B Job, Peter McBride, George T Brooking, James J Griev. Manager—Andrew Milroy. Accountant—William Lash. Teller—Samuel Cowan. Clerk and Messenger—W B Dryer.

**SAVINGS BANK.**

(Established 1834, by Act 4, Wm. 4, c. 10.)

Governors—The Members of Her Majesty's Council, and an equal number of the Members of the General Assembly, including the Speaker. Cashier—Robert Carter, R. N. Clerk—E Morris.

**ST. JOHN'S GAS LIGHT COMPANY.**

Incorporated by Act of the Legislature, 1844.

Directors—President, Robert Prowse, Vice President—E Bowring. Hon William Thomas, Thomas B Job, Christopher Ayre, Benjamin G Garret.

Treasurer and Secretary—John M. Brine. Manager—Andrew Thomson.

**ST. JOHN'S WATER COMPANY.**

*Incorporated by Act of the Legislature, 1946.*

Directors—President, Hon Wm Thomas. Vice President—Charles E Bennett. Edward Bowring, Peter McBride, Thomas B Joh, George T Brook- ing. Treasurer—Patrick Tasket. Secretary—W J Ward. Engineer and Superintendent—Robert Midto.

**ST. JOHN'S LIBRARY AND READING ROOM.**

President—The Hon the Attorney General. Vice Presidents—William Lash and Andrew Mil- ler. Treasurer—Thomas McConnan. Secretary—Allan Fraser.

**ST. JOHN'S PHOENIX VOLUNTEER FIRE COMPANY.**

First Director—William Coyell. Second Di- rector Samuel Loveys. Secretary—Ed Kennedy.

**MASONIC ORDER.**

Worshipful Master—Samuel G Archibald. Se- nior Warden—William Jenkins. Junior Warden— John Stuart. Treasurer—Daniel J Henderson. Secretary—William J Ward. Senior Deacon— Alexander Fraser. Junior Deacon—Thos Johus.

**HARBOUR GRACE TOTAL ABSTINENCE SOCIETY.**

President—John Munn. Vice Presidents—R J Pinsent and J T Roddick. Secretary and Treasu- rer—William C St John.

**CARBONEAR WESLEYAN TOTAL ABSTINENCE SO- CIETY.**

President—Rev John Snowball. Vice Presi- dent—Donald Bathube. Treasurer—George Bulley. Secretary—Simon Levi.

**ROMAN CATHOLIC TOTAL ABSTINENCE SOCIETY.**

President—Rev Kyran Walsh.

**ST. JOHN'S TOTAL ABSTINENCE SOCIETY.**

President—Andrew Milroy. Vice Presidents—

**Kenneth McLean and Samuel G Archibald, Secret-  
ary—W L McKay. Treasurer—William Pitt**

**ST. JOHN'S FACTORY.**

**President and Treasurer—Hon William Thomas.  
Secretary—Robert Prowse**

**MECHANICS' INSTITUTE, ESTABLISHED MAY 1849**

**President—Hon Attorney General. Vice Presi-  
dents—Andrew Milroy and Kenneth McLean. Treas-  
urer—Henry P Thomas. Curator—Frederick R  
Page. Secretary—Allan Fraser.**

**BRITANNIA LIFE ASSURANCE OFFICE, LONDON.**

**St. John's Branch—Agent, Robert Prowse**

**THE COLONIAL LIFE ASSURANCE COMPANY,**

**Registered and Empowered under Act of Parliam-  
ent, 7 and 8 Victoria, Cap. 10. Capital £500,  
000. St. John's Branch—Agent, George T Brock-**

**NATIONAL LOAN FUND LIFE ASSURANCE SOCIE-  
TY OF LONDON**

**Capital £500,000. Sub Agents—St John's, John B.  
Rulley, Harbour Grace, William C St John.**

**PROMOTION INSURANCE COMPANY OF NEW  
JERSEY**

**Capital \$250,000. Agent, St John's, Samuel G  
Archibald.**

**ALLIANCE BRITISH AND FOREIGN LIFE AND FIRE  
ASSURANCE COMPANY, LONDON.**

**Capital, Five Millions Sterling. Agents, New-  
foundland—Robinson, Brooking & Co.**

**ROYAL INSURANCE COMPANY, LIVERPOOL.**

**Capital, Two Millions Sterling. St John's Branch  
—Agents, Brocklebank & Anthony.**

**AGENTS FOR LLOYD.**

**St John's—Robinson, Brooking & Co. Harbour  
Grace—Ridley, Harrison & Co. Burin—William  
Hopper.**

**NEWSPAPERS PUBLISHED IN THE COLONY**

WITH DAYS OF PUBLICATION.

ST. JOHN'S.

*Royal Gazette*, Tuesday.

*Public Ledger*, Tuesday and Friday.

*Times and General Commercial Gazette*, Wednesday and Saturday.

*Newfoundland Patriot*, Saturday.

*Newfoundlander*, Thursday.

*Morning Post*, Tuesday, Thursday and Saturday.

*Morning Courier*, Wednesday and Saturday.

CONCEPTION BAY.

*Weekly Herald and Conception Bay Advertiser*, Wednesday.

**CONCEPTION BAY PACKETS.**

Harbour Grace and Portugal Cove—The "Express" and the "Victoria" sail alternately on the mornings of Monday, Wednesday and Friday.

The "Lotus" and "Native Lass" sail alternately, on the same mornings, between Carbonear and Portugal Cove.

The "Rapid" leaves Portugal Cove for Brigus on the mornings of Tuesday, Thursday and Saturday.

**NEWFOUNDLAND SAVINGS BANK.**

ASSETS, 31st DECEMBER, 1848.

Amount of Bills and Notes on hand,	£35,708	16	10
Cash on hand,	8,246	16	11
Treasury Notes,	1,386	0	0
Colonial Debentures,	7,349	19	8
	£52,687	13	5

Examined and approved,

December 31st, 1848.

LIABILITIES, 31st DECEMBER, 1848.

Amount due to Depositors, with interest included,	£46,838	0	10
Surplus of Assets,	5,849	12	7
	£52,687	13	6

WILLIAM THOMAS, }  
 RICHARD RANKIN, }  
 JOSEPH G. FALLS. }  
 Auditors.

**Auditors.**  
**WILLIAM EROMS,**  
**RICHARD RANKIN,**  
**JOSHUA G. FALLE.**

**December 31st, 1848.**

**LENGTH OF SESSIONS**  
**OF THE GENERAL ASSEMBLY OF NEWFOUNDLAND.**  
**PART VI.**

YEAR.	FROM	TO	DAYS IN SESSION.	REMARKS.
1833	July 1	July 30	29	Included an adjournment of 88 days, from May 30th to July 9.
1834	July 25	Sept. 20	161	
1835	Jan. 8	May 12	115	
1836	Jan. 7	May 26	111	
1837	July 8	Novr. 18	139	
1838	June 20	Oct. 25	127	
1839	May 17	Oct. 12	149	
1840	Jan. 23	April 25	118	
1841	Jan. 2	April 26	116	
1842	Nil.			
1843	Jan. 17	May 22	126	
1844	Jan. 10	April 29	111	
1845	Jan. 19	April 29	99	
1846	July 15	April 28	104	Met in consequence of the city of Saint John's having been destroyed by fire.
Do. Special	June 15	Aug. 4	50	
1846	Decr. 1	Jan. 14	44	9 Acts passed.
1847				
1848				
1849	Decr. 14	April 23	130	22 Acts passed.



**ACTS PASSED BY THE LEGISLATURE**  
OF THE COLONY  
**IN 1849.**

- 1.—Repeal of certain Duties of Customs.
- 2.—For granting certain duties on goods imported into this Colony.
- 3.—To provide for the regulation, management and collection of all duties.
- 4.—Light Houses (Amendment.)
- 5.—Road (Suspended.)
- 6.—For making Roads and Bridges.
- 7.—Loan (for Colonial Building and Market House.)
- 8.—Loan (for general purposes of the Colony.)
- 9.—Indemnity.
- 10.—Pickled Fish (Amendment.)
- 11.—Further Amendment of the Law.
- 12.—Proceedings in cases of Distress and Replevin
- 13.—Limitation of personal actions at Law, &c.
- 14.—Law of Attachment (Amendment.)
- 15.—Mode of Registering Grants.
- 16.—St. John's Streets (Amendment.)
- 17.—To prohibit Interments within the town of St. John's.
- 18.—To extend Vaccination to the Outports.
- 19.—To regulate the Importation of Books.
- 20.—To enable the Congregational Church to revive certain trusts.
- 21.—Supply.
- 22.—Legislative Contingencies.

**GOVERNORS OF NEWFOUNDLAND,**

From the earliest period of which there are any authentic records in the Secretary's Office.

1749	Rodney
1750-52	Drake
1753-54	Bonfoy
1755-58	Borrill
1757-59	Edwards
1760	Webb
1761-63	Graves
1764-68	Palliser
1769-71	Hon. J. Byron
1772-74	Shultham
1775	Duff
1776-78	Montagu
1779-81	Edwards
1782-85	Campbell
1786-88	Elliott
1789-91	Millbanke
1792-93	King
1794-96	Sir J. Wallace
1797-99	Hon. W. Waldegrave
1800-1	Sir C. M. Pole
1802-3	Gambier
1804-6	Sir E Gower
1807-9	Holloway
1810-12	Sir J. Duckworth
1813-15	Sir R. G. Keats
1816-17	Pickmore
1818-25	Sir C. Hamilton
1825-34	Sir T. Cochrane
1831-41	Prescott
1841-46	Sir John Harvey
1847	Sir J. G. LeMarchant

REPRODUCED FROM THE ORIGINAL RECORDS OF THE GOVERNMENT OF NEWFOUNDLAND  
 BY THE GOVERNMENT OF NEWFOUNDLAND  
 1910

**PORT OF ST. JOHN'S.**

A CONSOLIDATED ACCOUNT OF THE GOODS IMPORTED IN THE YEAR ENDING 5TH DAY OF JANUARY, 1849.

Showing the aggregate Quantities and Value of the various articles, with the amount of Duty collected thereon.

ARTICLES IMPORTED.	QUANTITY IMPORTED.	VALUE.	DUTY.
Wine, <i>videlicet</i> —In Bottles	21,612 1/2 gallons	5,037 19 6	2,701 11 11
Not in Bottles	54,513 gallons	5,639 14 8	1,264 16 6
Spirits, <i>videlicet</i> —	169 gallons	31 0 0	2 1 2 1/2
Brandy, Geneva, and Cordials	10 1/2 gallons	2,017 0 10	207 15 0
Rum and Whiskey	158 1/2 gallons	1,415 19 9	202 5 3 1/2
Undefined	140 1/2 gallons	17,552 4 2	1,250 16 3 1/2
Ale, Porter, Beer, Cider, and Perry	14,268 1/2 cwt	12,307 9 7	1,228 16 3 1/2
Apples	19 756 tons	17,552 4 2	1,582 16 0
Bread or Biscuit			
Butter			
Coals			

THE PORT OF ST. JOHN'S, N.S. CONSOLIDATED ACCOUNTS FOR THE YEAR ENDING 5TH DAY OF JANUARY, 1849.



## STATEMENT

SHOWING THE TOTAL AMOUNT RECEIVED AND PAID BY THE COLONIAL TREASURER FOR EACH PARTICULAR SERVICE, FOR THE YEAR ENDING DECR. 31st, 1848.

## RECEIPTS FOR THE YEAR.

	£	s.	d.
Balance from last year	3,399	13	5
Imperial Revenue	2,080	0	0
Colonial Revenue	11,963	8	3
Customs Bonds	24,937	19	0
Light Dues	1,512	14	9
Crown Rents and Land Fees	1,156	4	4
License Fund and Fines	574	10	10
Sheriffs' Fees	839	7	8
Chief Clerk and Registrar of Supreme and Central Circuit Courts' Fees	259	11	8
Clerks' Peace Fees	95	3	0
Balance	1,958	19	4
	48,787	12	3

## EXPENDITURE FOR THE YEAR.

	£	s.	d.
Fuel and Light	447	13	11
Repairing Gaols, &c.	221	6	11
Printing and Stationery	492	6	8
Gaol Expenses	721	0	11
Light Houses, £970 1 5 } Ditto Interest, 3 2 18 5 }	1,302	19	10
Crown Lands	1,351	0	1
Civil and Criminal Prosecutions	269	14	10
Bounty on Destruction of Wolves	25	0	0
Circuit Courts	750	15	5
Coroners	200	3	8
Ferries	430	1	4
St. John's Hospital	1,210	19	0

CONSOLIDATED STATEMENT.

63

EXPENDITURE FOR THE YEAR, Continued.

	£	s.	d.
Auxiliary Hospital	870	2	11
Lunatic Asylum	621	0	4
Registration of Voters	104	15	8
Shipwrecked Sealers	7	10	8
Salaries	2,783	15	0
Special Salaries	2,727	10	0
Education	5,128	6	8
Special Votes	1,928	14	4
Postage and Incidentals	151	0	0
Unforeseen Contingencies	190	15	4
Legislative Contingencies	119	14	8
The Poor	7,005	10	10
Roads and Bridges	1,620	3	8
St. John's Rebuilding Act, 10th Victoria, Cap. 1	1,583	3	7
Loans paid off	5,400	0	0
Election Expenses	1,123	19	10
Interest on Loans, 6th Victoria, Cap. 23	668	0	6
Interest on Loans, 9th Victoria, Cap. 7	991	13	4
Interest on Loans, Colonial Building	852	19	1
Interest on Loans, Treasury Notes	482	12	5
<b>Total</b>	<b>48,787</b>	<b>12</b>	<b>3</b>

(Signed)

PATRICK MORRIS,

Colonial Treasurer.

VALUE OF IMPORTS AND EXPORTS IN 1847 AND 1848

	1847	1848
Imports,	£843,409	£769,628
Exports,	806,505	837,581

**A RETURN**  
 SHOWING THE NUMBER OF REGISTERED VESSELS THAT ENTERED AND CLEARED AT THE PORT OF ST. JOHN'S, Distinguishing the Countries from of for which they Entered or Cleared, in each year during the six years ending 1844, and for the years 1847 and 1848.

COUNTRIES.	1839	1840	1841	1842	1843	1844	1847	1848	1848
	Entered	Entered	Entered	Entered	Entered	Entered	Arr.	Dep.	Dep.
United Kingdom	186	238	225	209	280	203	238	115	159
British Colonies	603	665	649	790	795	873	463	702	462
Foreign Europe	252	903	268	282	294	501	268	380	293
"    West Indies	75	56	71	61	70	62	62	64	57
United States	65	740	162	119	135	125	186	64	157
Coast-way	132	155	157	152	156	153			
<b>Totals</b> .....	<b>2663</b>	<b>2877</b>	<b>2896</b>	<b>3267</b>	<b>3276</b>	<b>3417</b>	<b>1155</b>	<b>1181</b>	<b>1101</b>

# NEWFOUNDLAND TARIFF OF DUTIES.

Payable under the Consolidated Act passed in the  
Local Legislature in the Session of 1849.

Articles.	Duty in Sh.
Apples—the barrel	1 5 6
Bacon and Hams—the Cwt.	5 0 0
Beef, salted and cured—the barrel, not exceeding Two Hundred Pounds.	2 0 0
Bread or Biscuit—the Cwt.	0 0 0
Butter—the cwt.	0 0 0
Cattle, Neat—each	0 0 0
Sheep, Calves, and Pigs—each	0 0 0
Cheese—the Cwt.	0 0 0
Cigars—the Thousand	0 0 0
Cocoa—the Cwt.	0 0 0
Coffee, Foreign—the Cwt.	0 0 0
British—the Cwt.	0 0 0
Coals—the Ton	0 0 0
Fish of Foreign taking or curing, dried or salted—the Cwt.	0 0 0
Flour—the barrel, not exceeding in weight 196 pounds	1 6 0
Horses, Mares, and Geldings—each	10 0 0
Lumber—the Thousand feet, one inch thick	2 6 1
Molasses, Foreign—the gallon	0 0 0
British—the gallon	0 0 1
Oatmeal or Indian Meal—the barrel not exceeding in weight Two Hundred Pounds	0 0 6
Pork—the barrel, not exceeding Two Hundred Pounds Weight	2 0 0
Salt—the Ton	0 0 6
Shingles—the Thousand	0 1 0
Spirits—Brandy, Whiskey, Gin, Cordials, or other Spirits, not hereof defined or enumerated, and of no exceeding the strength of proof by Sykes's Hydrometer, and so in proportion for any greater strength and for any greater or less quantity than a Gallon—the Gallon	2 0 0

Totals ..... 2886 99 31 47 1/2 118 1/2 101 10 40



**23** **TITLES OF DUTIES, CONTINUED**

Articles.	Duty Sig.		
	£	s.	d.
Rum, Foreign—the Gallon	0	1	0
“ British—the Gallon	0	0	6
Sugar, Loaf and Refined—the Cwt.	0	7	6
“ “ “ “—the Cwt.	0	5	0
“ “ “ “—the Cwt.	0	5	0
“ “ “ “—the Cwt.	0	2	6
Tea—the Pound	0	0	3
Timber, including Balk and Scantling—the Ton	0	1	6
Tobacco, Manufactured and Leaf—the Pound.	0	0	2
Tobacco Stems—the Cwt.	0	2	0
Wines, in Bottles—the Gallon	0	3	0
All other Wines—the Gallon	0	2	0
Clocks and Watches; Furniture manufactured of Wood, Ale, Porter, Beer, Cider, Perry, Oil, Blubber, Furs, and Skins, the produce of Creatures living in the Sea—for every £100 of the value	10	0	0
Candles of all kinds—for every £100 of the value	7	10	0
Goods, Wares, and Merchandise, not otherwise enumerated, described, or charged with duty, in this Act, and not herein exempt from duty—for every £100 of the value	5	0	0

**EXEMPTIONS.**

Printed Books; (there is a duty of 20 per cent on the Foreign reprints of copyright works of British authors, for the benefit of the author); Pamphlets, Maps, and Charts; Coin and Bullion; Hemp, Flax, and Tow; Lime and Limestone; Manure of all kinds; Provisions of every description, imported or supplied for Her Majesty's land or sea forces; Rice, seed, Refuse of Rice; Seed of all kinds; Vegetables of all sorts, fresh; Mules and Asses.



## COMPARATIVE STATEMENT

OF THE PUBLIC REVENUE AND EXPENDITURE IN THE YEARS 1844, 1845, 1847 and 1849.

		1848.		1847.		1845.		1844.	
Imperial Customs-Duties		£5783	17	£6211	12	£5510	15	£5175	19
Colonial Duties, &c.		43154	4	52127	15	49522	8	19931	7
Light-Dues		1627	18	1728	2	1715	13	1666	1
Fine on other articles		2934	17	1749	7	2942	11	2702	14
Totals		£58500	47	£61816	17	£59728	8	£59676	19
Expenditure		£62711	18	£74973	16	£62703	18	£66379	5
<b>SHIPS BUILT IN THE COLONY.</b>									
	1840.	1841.	1842.	1843.	1844.	1845.	1846.	1847.	1848.
No. . . . .	31	39	32	24	25	32	31	17	19
Tons. . . . .	1659	1683	1553	1192	1281	1607	1723	854	794

### SHIPS OWNED AND REGISTERED IN THE COLONY.

On 31st December, 1844	814	On 31st December, 1847	950
On 31st December, 1845	907	On 31st December, 1848	954

**COMPARATIVE STATEMENT**  
**Of the Quantity and Value of the Staple Articles of Produce**  
**Exported in the years 1840, 41, 42, 43, 44, 45, 47 and 48.**

1840	1841	1842	1843	1844	1845	1847	1848
------	------	------	------	------	------	------	------

Year	Hired Tons	Oil, Gallons	Seal Skins, No.	Salmon, Barrels	Wool, Bales	Value
1840	915 795	3,206,585	631,385	3,396	14 886	£12,039
1841	1,019 725	2,673,274	417,115	3,642	9,365	12,302
1842	1,007,980	2,269,131	344,683	4,715	13,859	18,778
1843	986,242	3,111,512	651,370	4,058	9,649	20,500
1844	852,162	3,605,868	625,550	3,753	13,410	24,487
1845	1,000,893	2,219,861	352,202	3,545	20,906	29,975
1847	887,973	2,224,298	436,831	4,917	9,974	31,194
1848	920,366	2,610,820	521,103	3,822	13,872	35,975
1840	576,245	2,205,157	459,468	£12,039	14 886	£12,039
1841	605,014	2,066,822	29,961	12,302	9,365	12,302
1842	561,950	2,331,314	23,500	18,778	13,859	18,778
1843	532,194	3,955,975	40,487	12,216	9,649	20,500
1844	482,480	3,155,696	39,648	11,905	13,410	24,487
1845	516,990	2,243,646	40,123	12,294	20,906	29,975
1847	489,940	2,229,172	46,280	9,282	9,974	31,194
1848	491,924	2,505,579	58,426	6,597	13,872	35,975

**PRESENT GOVERNORS OF THE OTHER NORTH AMERICAN COLONIES.**

**CANADA.**  
 Governor General—The Right Hon. the Earl of Elgin and Kincardine.

**NOVA SCOTIA.**  
 Lieutenant Governor—Lieutenant General Sir John Harvey, K.C.B. and K.C.H.

**NEW BRUNSWICK.**  
 Lieut.-Gov.—Sir Edmund Walker Head, Bart.

**PRINCE EDWARD ISLAND.**  
 Lieut. Governor—Sir Donald Campbell, Bart.

**CHIEF POWERS OF EUROPE.**

State.	DATE OF BIRTH	AND ACCESSION OF THE PRESENT RULERS.	Birth	Date of Accession.
Austria	1849	Emperor Francis	1818	1849
Baden	1849	Grand Duke Charles Leop.	1790	1849
Bavaria	1849	King Louis Charles	1786	1849
Belgium	1849	King Leopold	1790	1849
Britain, Great	1849	Queen Victoria	1819	1849
Denmark	1849	King Christian VIII.	1786	1849
France	1849	A Republic	1789	1849
Greece	1849	Otho	1815	1849
Hanover	1849	King Ernest	1771	1849
Naples	1849	King Ferdinand	1810	1849
Netherlands	1849	William III	1817	1849
Poland, New Kingdom)	1849	Vice-Royalty of Russia	1792	1849
Pope	1849	Pius IX	1792	1849
Portugal	1849	Queen Donna Maria	1819	1849
Prussia	1849	King Frederick William IV	1795	1849
Russia	1849	Emperor Nicholas	1796	1849
Sardinia	1849	Victor Emmanuel	1820	1849
Saxony	1849	Frederick Augustus	1797	1849

\*

\*

... the ... since 1800 ...

King Frederick William IV. 15 Oct. 1795  
 Emperor Nicholas 6 July 1796 O.S. 1 Dec. 1825 O.S.  
 Victor Emmanuel 18 Mar. 1820  
 Frederick Augustus 18 May 1797  
 7 June 1849  
 6 June 1848

CHIEF POWERS OF EUROPE. Continued.

Year	State	King	Title of Ruler	Birth	Date of Accession
1825	Spain	...	...	...	...
1825	Spain	...	Queen Isabella II.	10 Oct. 1830	29 Sept. 1833
1825	Sweden and Norway	...	King Oscar I.	4 July 1799	8 March 1844
1825	Switzerland	...	A Republic	...	...
1825	Turkey	...	Abdul Medjid, Sultan	20 April 1823	1 July 1839
1825	Tuscany	...	Grand Duke Leopold II.	5 Oct. 1797	18 June 1824
1825	Wurtemberg	...	King William Frederick Charles	27 Sept. 1781	30 Oct. 1810

### VARIATION OF THE COMPASS.

From the Records of Her Majesty's Magnetic Observatory.

The mean variation at Toronto for the year 1847, was 1° 36' West (nearly); it increases about 3' every year. The variation undergoes a daily change, being least from 7 to 8, A.M., and greatest from 1 to 2 P.M. The variation is least liable to fluctuations in the afternoon; it is near its mean value at 10 A.M., and 6 to 7 P.M.

The Magnetical and Meteorological Observatory was founded by Her Majesty's Government in 1840, in concert with similar establishments in other Colonies and in India. Similar establishments have been maintained at Washington, Philadelphia, and Boston in the United States, and in most European countries.

VARIATION OF THE SEASIDE ELECTRICITY

# POPULATION, &c., OF THE SEVERAL ELECTORAL DISTRICTS.

DISTRICTS.	According to Census of 1836.		According to Census of 1845.		Increase per cent.		RELIGION.						Average produce of			Acres of Land in Culture		No. of Fishing Boats.		No. of Seating Vessels.		No. of Schools.		No. of Dwelling-Houses.		No. of Chapels.		No. of Roman Catholics.		No. of Meeting Houses.		No. of Dissenters.		No. of Children.		No. of Episcopals.		No. of Females.		No. of Males.													
	1836.		1845.		per cent.		Protestants.		Methodists.		Presbyterians.		Anglicans.		Roman Catholics.		Dissenters.		Children.		Episcopals.		Females.		Males.		Protestants.		Methodists.		Presbyterians.		Anglicans.		Roman Catholics.		Dissenters.		Children.		Episcopals.		Females.		Males.								
St. John's	10289	6689	13177	12119	53	64	286	9	1995	5	18985	54110	59	173	775	196	99	46543	3456	4819	271	1307	2083	948	1576	2083	948	1576	2083	948	1576	2083	948	1576	2083	948	1576	2083	948	1576	2083	948	1576	2083	948	1576							
Conception Bay	12842	16373	14699	13127	20	7	8601	19	7845	16	11580	104196	54	235	2682	4365	152	588	6610	2083	948	1576	2083	948	1576	2083	948	1576	2083	948	1576	2083	948	1576	2083	948	1576	2083	948	1576	2083	948	1576	2083	948	1576	2083	948	1576				
Trinity Bay	3751	3052	4049	2112	13	2	4753	12	2765	8	4283	21363	22	34	1869	1070	296	223	8	478	121	567	478	121	567	478	121	567	478	121	567	478	121	567	478	121	567	478	121	567	478	121	567	478	121	567	478	121	567	478	121	567	
Bona Vista Bay	2898	2285	3949	3984	30	4	4684	11	734	1	1809	21039	17	26	483	612	259	71	972	260	52	505	260	52	505	260	52	505	260	52	505	260	52	505	260	52	505	260	52	505	260	52	505	260	52	505	260	52	505	260	52	505	
Fogo	2788	2148	3774	2979	38	8	5017	7	599	1	1128	3588	10	20	1014	412	1386	14	52	5	276	52	5	276	52	5	276	52	5	276	52	5	276	52	5	276	52	5	276	52	5	276	52	5	276	52	5	276	52	5	276		
*Ferryland	3830	1781	3623	1958	33	1	106	1	1	0	4412	9	780	22	6	904	1008	265	591	904	176	607	904	176	607	904	176	607	904	176	607	904	176	607	904	176	607	904	176	607	904	176	607	904	176	607	904	176	607	904	176	607	
Placentia and St. Mary's	2644	2057	578	2995	37	6	971	4	47	0	5455	9	960	11	4	842	3200	287	588	1573	45	1618	1573	45	1618	1573	45	1618	1573	45	1618	1573	45	1618	1573	45	1618	1573	45	1618	1573	45	1618	1573	45	1618	1573	45	1618	1573	45	1618	
Burin	1775	1965	2485	1873	38	7	1221	1	1166	8	1951	2	694	11	709	1047	1108	10	20	777	85	889	777	85	889	777	85	889	777	85	889	777	85	889	777	85	889	777	85	889	777	85	889	777	85	889	777	85	889				
Fortune Bay	1857	1272	3109	1991	60	3	4640	4	68	0	392	726	10	1341	1341	229	2050	3	176	5	360	3	176	5	360	3	176	5	360	3	176	5	360	3	176	5	360	3	176	5	360	3	176	5	360	3	176	5	360	3	176	5	360

The average increase of the whole population of the Island, since 1836, is rather more than 30 per cent. \*In this district there is a decrease of 10 per cent.

2644	2057	\$578	2895	37	6	971	4	47	5455	9	960	11	4	842	2200	28739	588	1573	45	1618
1775	1365	2485	1873	38	7	1221	1	1186	1051	32	634	11	709	1047	11081	20	777	85	689	
1857	1272	3109	1991	60	3	4640	4	68	992	10	726	10	1341	229	2050	5	176	5	360	

The average increase of the whole population of the Island, since 1836, is rather more than 30 per cent.  
 \*In this district there is a decrease of 10 per cent.



**THE QUEEN AND ROYAL FAMILY.**

**THE QUEEN.**—VICTORIA, of the United Kingdom of Great Britain and Ireland Queen, Defender of the Faith, was born May 24th, 1819; succeeded to the throne June 20, 1837, on the death of her uncle, King William IV; crowned June 28, 1838; and married February 10, 1840, to His Royal Highness Prince Albert, named below. Her Majesty is the only daughter of His late Royal Highness Edward, Duke of Kent, son of George III. Her mother, the Duchess of Kent, is named below.

His Royal Highness Francis Albert Augustus Charles Emanuel Busici, Duke of Saxe, Prince of Cobourg and Gotha, K.G., Consort of Her Majesty, born August 26th, 1819.

Her Royal Highness Victoria Adelaide Mary Louise, Princess Royal, born November 21st, 1840.

His Royal Highness Albert Edward, Prince of Wales, born November 9th, 1841.

Her Royal Highness Alice Maud, born April 25th, 1843.

His Royal Highness Alfred Ernest Albert, born August 6th, 1844.

Her Royal Highness Helena Augusta Victoria, born May 25th, 1846.

Her Royal Highness Louisa Carolina Alberta, born March 18th, 1848.

**THE QUEEN DOWAGER**—Amelia Adelaide Louise Theresa, sister to the Duke of Saxe-Meiningen, born August 13, 1792; married July 11, 1818; crowned September 8, 1831.



## PRINCES AND PRINCESSES.

Ernest Augustus, Duke of Cumberland, in Great Britain, and King of Hanover, uncle to Her Majesty, born June 5th, 1771; married August 29, 1815. Issue, George Frederick, again named below.

Adolphus Frederick, Duke of Cambridge, uncle to Her Majesty, born February 24, 1774; married May 2, 1818, Her Serene Highness Augusta Wilhelmina Louisa, daughter of Frederick Landgrave of Hesse. Issue, 3 children, named below.

Mary, aunt to Her Majesty, born April 25, 1776; married July 22, 1816, her cousin, the Duke of Gloucester, deceased.

Victoria Mary Louisa, Duchess of Kent, born August 17th, 1786; married, in 1818, the Duke of Kent, (who died January 23d, 1820); Her Majesty's mother.

Augusta Wilhelmina Louisa, Duchess of Cambridge, niece of the Landgrave of Hesse, born July 25, 1797; married, in 1818, the Duke of Cambridge, by whom she has issue, George William, Augusta Caroline, and Mary Adelaide, named below.

George Frederick Alexander Charles Ernest Augustus, K. G., only child of the King of Hanover, Prince Royal of Hanover, cousin to her Majesty, born May 27th, 1819; married, February, 1843, Princess Mary of Saxe-Altenberg, and has a son.

George William Frederick Charles, K. G., son of the Duke of Cambridge, cousin to her Majesty, born March 26th, 1819.

Augusta Caroline Charlotte Elizabeth Mary Sophia Louisa, daughter of the Duke of Cambridge, and cousin to her Majesty, born July 19th, 1822; married, June 28th, 1843, Frederick, Hereditary Grand Duke of Mecklenburg-Strelitz.

Mary Adelaide Wilhelmina Elizabeth, daughter of the Duke of Cambridge and cousin to her Majesty, born November 27th, 1833.

SES.

and, in Great  
to Her Ma-  
August 29,  
gain named

uridge, uncle  
74; married  
ugusta Wil-  
k Landgrave  
below.  
April 25, 1776;  
the Duke of

Kent, born  
the Duke of  
Her Maje-

ess of Cam-  
e, born July  
ke of Cam-  
ge William,  
, named be-

Charles Ernest  
ng of Hano-  
to her Ma-  
, February,  
erg, and has

K.G., son of  
ajesty, born

h Mary So-  
Cambridge,  
19th, 1822;  
Hereditary

h, daughter  
to her Ma-

## APPENDIX.

*The following appointments have been made since the foregoing sheets were printed.*

### BOARD OF HEALTH,

*Under the Provisions of the Quarantine Act, 3, Wm. 4, Cap. 1.*

The Stipendiary Magistrates	Walter Grieve L. O'Brien	James Douglas Wm. Freeman
Hon. W. Thomas	Kenneth McLea	E. Harvey
James Tobin	Peter McBride	R. H. Job
John Kent	George Logan	C. Loughlan
Doctor Kieley	John B. Barnes	John O'Mara
.. Carson	Edward Bowring	Robert Prowse
.. Rochford	G. T. Brooking	Thomas Row
.. Stabb	John B. Bulley	H. C. B. Thomas
Bryan Robinson	J. Brocklebank	James Tubrid
Hugh W. Hoyles	James Colten	

Health Officer of Quarantine—S. Carson, M. D.  
Superintendent of Quarantine—John Saunders,

William V. Whiteway—Notary Public, St. John's.

John Kent—Commissioner of Colonial Building.

James Tobin—Director of St. John's Academy.

Peter McBride—Commissioner of Pilots.

James J. Grieve—Commissioner of Light Houses.

Joseph Shea, M. D.—Clerk to Commissioners for Relief of the Poor.

John Freeman—Dispenser to do.

H. A. Emerson—Acting Assistant Judge of the Supreme Court, vice Hon. James Simms.

Bryan Robinson—Acting Solicitor General, vice Emerson.

John Makay—Clerk of the Peace, Carbonear.

Rev. F. King—Minister of the Church of Scotland.

Rev. Mr. Gray—Acting Principal of Theological Institution.

## APPENDIX.

### JUSTICES OF THE PEACE.

*District of St. John's*—Charles Fox Bennett, John Kent, Bryan Robinson, Charles Simms.

*District of Conception Bay*—Thomas Ridley, Edmund Harrphan, W. W. Bemister, George Forward, John Rorke, James L. Prendergast, John Wilcox, James Keeping, John Leannon,

*District of Trinity Bay*—Charles Newhook, James Johnston,

*District of Bonavista Bay*—Philip Leviscome.

*District of Fogo*—George E. Ridout, James Fitzgerald.

*District of Placentia and St. Mary's*—James Furlong, George L. Messurier.

*District of Burin*—Edward Evans, Thomas E. Collitt.

*District of Fortune Bay*—Andrew Ellis, John Chapman, William Gallop, John Stevens.

### ST. ANDREW'S SOCIETY.

President—David Steel. Vice President—Patrick Tasker. Treasurer—Allan Fraser. Secretary—John C. Crawford. Committee of Charity—R. Rodger, G. G. Geddes, and William Boyd.

### LIGHT HOUSE ON CAPE PINE.

Government has contracted with A. Gordon, Esq. Civil Engineer, Greenock, for the erection of an iron light-house on this spot before the close of the present year. The site is 246 feet above the sea—the light will be 74 feet from the ground, in all 320 feet above the level of the sea. The building and light are to be similar to that erected by the same gentleman at the south-eastern end of the Bermuda Islands, which is said to be one of the finest in the world.

**G. F. BOWN,**

**General Commission Merchant,**

**SAINT JOHN'S,**

**NEWFOUNDLAND.**

**JAMES & ROBERT KENT,**

**General Commission Merchants,**

**SAINT JOHN'S,**

**NEWFOUNDLAND.**

**P. H. CARTER & CO.**

**Commission Merchants,**

**SAINT JOHN'S,**

**NEWFOUNDLAND.**

**JAMES FOX & CO.**

**COMMISSION MERCHANTS**

**Water Street, St. John's,**

**NEWFOUNDLAND.**

**McKay & McKenzie,**

**COMMISSION MERCHANTS,**

**AND**

**GENERAL AGENTS,**

**SAINT JOHN'S,**

**NEWFOUNDLAND.**

*Smith McKay.*

*Daniel McKenzie.*

# LONDON BOOK STORE,

**Water Street,**

**ST. JOHN'S, NEWFOUNDLAND.**

## THE SUBSCRIBER

Has constantly on hand, a large and valuable assortment of

## BOOKS, STATIONERY, HARDWARE

AND

## PERFUMERY,

AMONGST WHICH ARE

Bibles, Testaments, Psalm Books, Prayer Books

A good selection of Religious Works

History, Biography, Travels, Arts and Sciences,

Classics, British Poets

Norie's Navigation and Seaman's Assistant, &c.

Chambers's Journal

Information for the People

Cyclopedia of English Literature

Educational Course

Miscellany of useful and entertaining

Tracts

People's Edition of approved works

in all departments of Literature

French, Spanish, Portuguese, Italian, Danish,

Swedish and Irish Bibles and Testaments

School Books, Maps and Atlases

Ollendorff's New Method of Learning to Read,

Write, and Speak the Spanish, French, Italian,

and German Languages—with or without Keys.

Blank Books from 1½ to 10 quires

Memorandum and Metallic Books

Writing and Wrapping Paper

Quills, Steel Pens, Slates, Pencils

Sealing Wax, Waters

Writing and Marking Ink.

 See next Page.

STORE,

LAND.

valuable as-

RDWARE

Prayer Books

nd Sciences,

Assistant, &c.

le  
Literature


entertaining

proved works

Literature  
ian, Danish,  
estaments

ng to Read,  
ench, Italian,  
ithout Keys.

next Page.

 London Book Store continued.

A LARGE ASSORTMENT OF

## Fancy Stationery,

Drawing Paper	Gold, Silver and Plati-
Bristol Boards	tina Pencil Cases
Marble and Fancy Pa-	and Tooth Picks
pers	Pearl, Ivory, Gilt and
Drawing Books and	Bone Paper Knives
Pencils	Papier Machie Port-
Silver, Pearl, Ivory,	folios, Card Cases,
&c., Pen Holders	and Ink Stands

Mahogany, Rosewood, and Leather

## WRITING DESKS.

Rosewood Work Boxes and Watch Stands  
Gentlemen's Dressing and Travelling Cases.

## WARRANTED RAZORS, PENKNIVES, & SCISSORS.

Pocket Books and Tablets  
Cloth, Hair, Nail, Soap, and Tooth Brushes  
Dressing Combs.

A general assortment of the newest London



*Fine Steel Engravings & Common Pictures*

BILLS OF LADING, BILLS OF EXCHANGE

AND

## CUSTOM HOUSE FORMS.

The strictest attention paid to orders from  
the country, and a liberal discount made to  
wholesale purchasers.

**James Joseph Graham.**

# **India Rubber Warehouse,**

**KELLY'S BUILDINGS,**

**WATER STREET,**

**St. JOHN'S, Newfoundland,**

Where may be found the following assortment,

Officers' Coats	Riding Boots, Whips
Pea Coats, Light Sacks	and Bridles
Single and Double	Camp Blankets, Beds
Breasted Coats	and Pillows
Capes, with and with-	Bathing Mats, and
out sleeves	Shower Pots
Poncheos, Leggings	Life Preservers
Gun Cases	Horse Covers, with
Reefing Jackets and	and without Hoods
Overalls	Canteens
Liquor Bottles, Tum-	Haversacks, Syringes
blers and Cups—	Knapsacks
with handles	Sou'-Westers & Caps
Breast Pumps	Fire Buckets
Surgical Bandages	Water Pails
Maps, Gloves	Sponge Bags
Tobacco Wallets	Artist Gum
Basins, Foot Tubs	Saddle Bags
Hose, Parlor Balls	Paper Holders, Bands
Teething Rings	Nursing Aprons
Ladies' and Gentle-	Butchers' Aprons
men's Over Shoes	Bed Pans and Bellows
Door Springs	Ladies' Aprons
Elastics for Gloves	Silesia Coats
Travelling, round and	Ladies' Shoulder Bra-
square bottom Bags	ces
Firemen's Capes	Horse Fenders, and
Chair Cushions	Ankle Boots.

*The above articles are offered on favourable terms  
for Cash.*

house,  
INGS,

foundland,  
assortment,

oots, Whips  
tles  
kets, Beds  
ows  
Mats, and  
Pots  
rvers  
vers. with  
out Hoods

s, Syringes

ers & Caps  
ets  
ls  
ags

s  
ders, Bands  
prons  
Aprons  
nd Bellows  
prons  
ats  
oulder Bra-

ders, and  
oots.

urable terms

# SARSAPARILLA DEPOT, KELLY'S BUILDINGS,

*Water Street, St. John's, Newfoundland.*

## DR. S. P. TOWNSEND'S COMPOUND EXTRACT OF SARSAPARILLA: THE WONDER AND BLESSING OF THE AGE.

*The most extraordinary Medicine in the world.*

This extract is put up in quart bottles; it is six times cheaper, pleasanter, and warranted superior to any sold. It cures without vomiting, purging, sickening, or debilitating the patient.

*Female Medicine.—To Mothers and Married Ladies.*—This extract of Sarsaparilla has been expressly prepared in reference to female complaints.

*Great Blessing to Mothers and Children.*—It is the safest and most effectual Medicine for purifying the system, and relieving the sufferings attendant upon child-birth, ever discovered.

*Liver Complaints and Disease of the Lungs, Pain in the Side, Chest, Back, and Dizziness in the Head,* are cured by using Townsend's Sarsaparilla.

*Sore Eyes—Any case of Dyspepsia—The Cholera—Cancer.*—These are very interesting cases. Tumours, Ulcers, and Diseases of the Blood, are easily eradicated by this cheap and pleasant remedy.

*Abscesses and Pleurisy.—The Piles Cured.*—The greatest remedy for the Piles ever discovered.

*Scrofula—Nervous Debility—Erysipelas—Spitting Blood.*—Sarsaparilla cures the worst cases of disease—Coughs, Consumption, Night Sweats.

*Palpitation of the Heart—Sick Headache.*—Cleanses the Stomach and promotes digestion. This is a certain remedy for this distressing complaint.

*Sold only at the "Sarsaparilla Depot."*



**NEW DRY GOODS STORE !**

**WATER STREET,**

East of Messrs. W. & H. THOMAS & Co 's

***John & James Barr,***

IMPORTERS OF

**BRITISH MANUFACTURED**

**GOODS,**

In announcing that they have commenced business in the above Premises, desire particular attention to the principle on which their business is conducted, viz :

*That of supplying Goods of the best quality and description*

**At Strictly Moderate Prices.**

J. & J. B. will always have on hand every variety of Goods suitable for the Seasons.

**FANCY GOODS**

Of the newest designs:

***Leatherware, Teas, &c. &c. &c.***

Of the very best quality.

# OF INTEREST TO ALL!

TO THE LADIES.

## The Genuine Balm of Columbia

FOR RESTORING THE HAIR.

“Long hair is a glory to woman,” says Paul,  
And all feel the truth of this pious quotation,  
Preserve it then, ladies—your glory may fall,  
Unless you protect it with this preparation.


If you wish a rich, luxuriant head of hair, free from dandruff and scurf, do not fail to procure the genuine Balm of Columbia. In cases of baldness it will more than exceed your expectations. Many who have lost their hair for twenty years, have had it restored to its original perfection by the use of this balm. Age, state, or condition, appears to be no obstacle whatever; it also causes the fluid to flow with which the delicate hair tubes are filled, by which means thousands (whose hair was gray as the Asiatic eagle) have had their hair restored to its natural color by this valuable remedy. In all cases of fever it will be found the most pleasant wash that can be used. A few applications only are necessary to keep the hair from falling out. It strengthens the roots, it never fails to impart a rich glossy appearance, and as a perfume for the toilet it is unequalled. It holds three times as much as other mis-called hair restoratives, and is more effectual.

*Caution.*—Never buy it unless you find the name of Comstock & Co., proprietors, on the wrapper of each bottle, or you are cheated with a counterfeit article.

## Connell's Magical Pain Extractor.

THE WORLD'S WONDER—PRONOUNCED SO BY ALL  
WHO HAVE EVER USED IT.

White Swellings, Inflammation, Pain in the Back,  
Weak Limbs, Tender or Sore Feet, and all Scrufulous Sores are speedily and permanently cured by Connell's Magical Pain-Extractor; Affections

\* of the Lungs, Ague in the Face, Breast, Tic Do-  
 loureux, Chronic Sore Eyes, Blistered Surfaces,  
 &c. It is equally beneficial in all kinds of Inflam-  
 matory Diseases, such as Sore Nipples, and Eyes,  
 Sprains, Rheumatism, White Swelling and Ulcers,  
 Bruises, Burns, Chilblains, Erysipelas, Biles, &c.  
 —will quickly be relieved by the application of  
 this salve. This remarkable sanative possesses  
 many virtues never in any other article. It has  
 the most perfect power over all pains by fire, po-  
 sitively allaying the suffering almost immediately  
 upon its application. If any disbelieve the state-  
 ment, we would earnestly invite them to call and  
 examine the numerous unsolicited certificates of  
 remarkable cures wrought by this salve. It has  
 for months past been sold upon the following lib-  
 eral terms, to wit; if the user was not perfectly sa-  
 tisfied, and even delighted with its effects, and,  
 furthermore, if it did not fully answer our recom-  
 mendation, their money was returned immediately  
 at their request. On these terms this absolute  
 heat-all is now sold; and we simply ask if the  
 public can demand anything more reasonable?  
 Kind parent, keep it constantly on hand; in cases  
 of accident by fire, life may be lost without it; but  
 by its use all burns are subject to its control, unless  
 the vitals are destroyed.  **Caution.**—No Pain  
 Extractor can be genuine unless you find the sig-  
 nature of Comstock & Co. on the wrapper of each  
 box. Beware of counterfeit.

### **Rheumatism.**

Comstock's Hewes' Nerve and Bone Liniment,  
 and Indian Vegetable Elixir, is warranted to cure  
 any case of Rheumatism, Gout, Contracted Chords  
 and Muscles, or Stiff Joints, strenghtens Weak  
 Limbs, and enables those who are crippled to walk  
 again. Use this article and be cured, or go with-  
 out it and suffer, as you please. Certificates of  
 cures by the hundred can be seen at 57 John st.,  
 N.Y., where this article is sold only genuine.

### **Deafness.**

Use Dr McNair's Acoustic Oil, for the cure of  
 Deafness. Also, all those disagreeable noises

st, Tic Dor  
d Surfaces,  
of Inflam-  
and Eyes,  
and Ulcers,  
Biles, &c.  
plication of  
e possesses  
cle. It has  
by fire, po-  
immediately  
e the state-  
to call and  
ertificates of  
ive. It has  
ollowing lib-  
perfectly sa-  
effects, and,  
our recom-  
immediately  
his absolute  
ask if the  
reasonable?  
and; in cases  
hout it; but  
ontrol, unless  
.—No Pain  
find the sig-  
apper of each

ne Liniment,  
anted to cure  
acted Chords  
ghtens Weak  
ppled to walk  
, or go with-  
Certificates of  
57 John st.,  
enuine.

or the cure of  
eable noises

like the buzzing of insects, falling of water, whiz-  
zing of steam, which are symptoms of approaching  
deafness. Many persons who have been deaf for  
ten, fifteen, or twenty years, and were subject to  
use ear-trumpets, have, after using one or two  
bottles, thrown aside these trumpets, being made  
perfectly well. It has cured cases of ten, fifteen,  
and even thirty years' standing of deafness.

### **Hays' Liniment for the Piles.**

The worst attacks of the Piles are effectually and  
permanently cured in a short time by the use of  
the genuine Hays' Liniment. Hundreds of our  
first citizens throughout the country have used this  
liniment with complete success. It is warranted  
to cure the most aggravated case.

*Caution*—Never buy it unless you find the name  
of Comstock & Co. upon the wrapper, proprietors  
of the genuine article, or you are cheated with a  
counterfeit.

### **Dr Spohn's Sick Headache Remedy**

Who will suffer with that distressing complaint,  
when a remedy is at hand that will not fail to cure  
you? This remedy will effectually destroy any at-  
tack of headache, either nervous or bilious. It has  
cured cases of twenty years' standing.

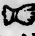
### **Mother's Relief—Indian Discovery**

All expecting to become mothers, and anxious to  
avoid the pains, distress and dangers of child  
bearing, are earnestly entreated to calm their fears,  
allay their nervousness, and soothe their way by the  
use of this extraordinary vegetable production. —  
Those who will candidly observe its virtues, must  
approve of it in their hearts; every kind and affec-  
tionate husband will feel it his most solemn duty  
to alleviate the distress his wife is exposed to, by  
a safe and certain method, which is, the use of this  
Mother's Relief.

### **Longley's Great Western Indian Panacea.**

1. For Colds and feverish feelings, and preventing  
fevers. 2. For Asthma, Liver Complaints, and Bil-

ious affections. 3. For Diarrhœa, Indigestion and Loss of Appetite. 4. For Costiveness in females and males, and nervous complaints. 5. For Stomach affections, Dyspepsia, Piles, Rheumatism &c. The great points are, it is not bad to take never gives pain, and never leaves one costive.

 Dyspepsia and Liver complaint cured, and all Western and Southern Fevers prevented, in every case by the use of Longley's Great Western Indian Panacea, warranted to cure the most severe cases of the above complaints. Loss of appetite, bilious affections and indigestion, are permanently cured by its use. The great points are, it is not bad to take; it does not leave the bowels costive, and never gives pain in its operations.— This Panacea will remove all the bad bile from the stomach and give tone to the system, and keeps off all attacks of malignant fevers. If the stomach is in a healthy state, and the pores of the skin are open, so as to admit of free exhalations from the body, there can be no attack of fever. This office the Panacea will positively perform, and we recommend all to try this article if they wish to ensure health during the year. As a family medicine, it is unparalleled for coughs, colds, and all diseases of the blood, and kidney and scrofula complaints.

### **Have you a Cough?—Do not Neglect it.**

Thousands have met a premature death for the want of attention to a common cold. Rev Dr Bartholomew's Expectorant Pink Syrup will most positively give relief and save you from that most awful disease, Pulmonary Consumption, which usually sweeps into the grave thousands of the young, the old, the lovely and the gay.

### **The Great Pain Killer.**

No medicine has been discovered that is so happily adapted to use internally as drops to be taken, and yet perform such wonders when applied externally as a wash, or bath, by friction. A York Shilling (12 cents) is all you have to risk to try it; and as that sum can be no object to the propri-

Indigestion and  
ness in females  
5. For Sto-  
p, Rheumatism  
ot bad to take  
one costive.

int cured, and  
s prevented, in  
Great Western  
the most se  
Loss of ap-  
sion, are per-  
at points are, it  
ave the bowels  
s operations.—  
d bile from the  
, and keeps off  
the stomach is  
f the skin are  
atons from the  
r. This office  
and we recom-  
wish to ensure  
medicine, it is  
d all diseases  
ula complaints

**Do not Ne-**

death for the  
Rev Dr Bar-  
will most posi-  
that most aw-  
, which usual-  
the young, the

**Her.**

hat is so hap-  
s to be taken,  
a applied ex-  
on. A York  
to risk to try  
to the propri-

ator, it is hoped that such a price can be no obsta-  
cle to any family, and will never prevent its trial.

It is not intended to put this great healing re-  
medy into the hands of druggists, who have so many  
useless things of their own to recommend, but look  
for it always with country merchants, or in towns  
in fancy or dry goods stores, or in temperance  
groceries. The price from twelve to fifty cents  
per bottle, according to the size, will enable all to  
use it. If you doubt begin with a twelve cent bot-  
tle; and that will remove your doubts, and make  
you buy and use and recommend it to your friend  
more than a hundred certificates would. Who will  
fail to try it then, and save life and suffering for  
a York Shilling?

This "PAIN-KILLER" may be used with a  
success that will astonish the beholder, in such ca-  
ses as the following:—Cholera Morbus, Distressing  
Dysentery, Pain in the Side and Stomach; Corns,  
Cuts and Bruises, Cholera Infantum, *Bronchitis*,  
Healing Sores on Man or Beast, Children Teeth-  
ing, Raising Blood, Hoarseness, Quinsy in a few  
hours; Chilblains, Frosted Feet, Spasms, Prevent  
a Blister from Burns, Proken Breasts, Measles,  
Cramps, Hurts, Scratches, or Torn Flesh, Bites or  
Stings.

CERTIFICATES to fill a volume might be pub-  
lished, showing the wonderful effects of "Mrs.  
Brown's Pain Killer," but they are too common,  
and used for articles of no merit; and the One  
Shilling bottle will do more than a thousand un-  
known names to convince the user.

### Startling Facts.

Hundreds of children and adults are lost yearly  
with worms, when some other cause has been sup-  
posed to be the true one. It is admitted by all doc-  
tors, that scarce a man, woman or child exists  
but what are sooner or later troubled with worms,  
and in hundreds of cases which exist, a *supposed*  
fever, scarlatina, cold, or some other ailment carries  
off the flowers of the human family—while in truth  
they die of worms! and these could have been era-  
dicated in a day, by the use of a bottle of *Kolm-*

*stock's Vermifuge*, at the cost of a quarter of a dollar. How sickening the thought that these things should be—and who can ever forgive themselves for not trying this *Worm Exterminator*, when they know that even if the case was not worms this remedy could not by any possibility do hurt—but always good as a purgative let the disease be what it may.

Remember ask for *Kolmstock's Vermifuge*.

All the above articles are sold by Comstock & Co. Brothers, 57 John Street, New York, and by

**J. J. GRAHAM,**

and all the Apothecaries in St. John's, N. F.

---

**F. DOWSLEY,**

DRUGGIST, &c.

*Opposite the Premises of Mr. R. O'Dwyer,*

WATER STREET,

ST. JOHN'S, NEWFOUNDLAND.

Where a stock of the best and purest

**MEDICINES**

are constantly kept, and sold at a moderate price. Medical Men supplied on most reasonable and accommodating terms.

---

**S. J. DANIEL,**

**NOTARY PUBLIC,**

ST. JOHN'S, N.F.

---

**THE SAINT JOHN'S FOUNDRY,  
MILL, LUMBER-YARD,  
DISTILLERY AND BREWING ESTABLISHMENT.**

**STOVES of all kinds.**

**IRON PIPES, and every description of**

**CASTINGS**

in Brass and Iron executed with economy and despatch. The Public may also be supplied with Copper, Composition and Iron NAILS, of all sizes, and at moderate prices.

**Scantling, Plank, Boards,**

**FLOORING** of equal thickness with a planed surface, rabbited, and ready to lay down a perfect floor. Planed **BOARDS**, together with every description of Building Material supplied at the shortest notice.

Orders for **MALT LIQUOR**, viz:—Good Strong Beer, Ale, Cheap Table Beer and Porter, promptly executed.

Fresh **YEAST** to be had at all times on the premises, or sent to those who may order it twice a week.

**GRAIN** threshed, winnowed, and Ground with despatch.

Black and Whitesmiths can be supplied with an excellent article of **WROUGHT IRON** manufactured on the premises from Scrap Iron.

Old Iron and Copper purchased at their value. Also—Barley for Malting purposes.

r of a dollar  
ings should  
vas for not  
they know  
his remedy  
but always  
what it may.

ugs.

sock & Co.  
nd by

s, N. F.

**Y,**

Dwyer,

OUNDLAND.

d purest

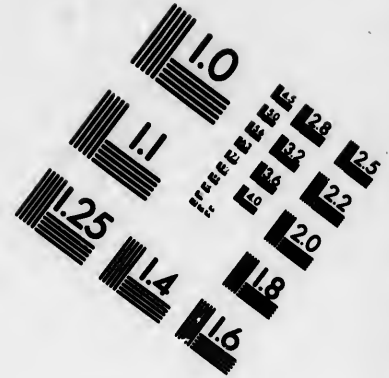
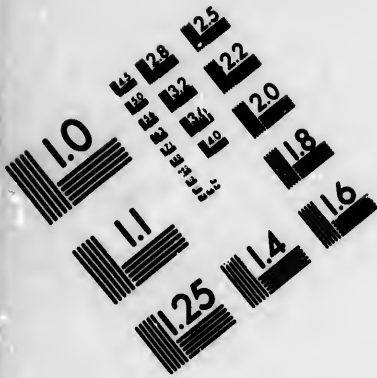
moderate  
most rea-

**I O,**

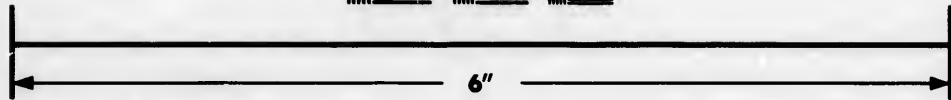
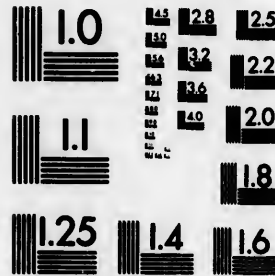
's, N.F.







**IMAGE EVALUATION  
TEST TARGET (MT-3)**



**Photographic  
Sciences  
Corporation**

23 WEST MAIN STREET  
WEBSTER, N.Y. 14580  
(716) 872-4503

0  
16  
18  
20  
22  
25  
28  
32  
36

10  
11  
12  
15  
20

## NOTICE TO THE PUBLIC.

### THE SUBSCRIBER

Offers by wholesale and retail a general assortment of

# TIN-WARE,

Manufactured in St. John's, by machinery, all of which has been fitted up this season,—can be sold 20 per cent cheaper than is to be found in Newfoundland, comprising the following articles and sizes:

Boats' Kettles—from $\frac{1}{2}$ to 12 gallons . . . . .	10 sizes.
Tea do—1 quart to 22 quarts . . . . .	14 ..
Round Tin Pans—1 quart to 20 quarts . . . . .	15 ..
Tea Pots—1 to 6 pints . . . . .	5 ..
Tea Canisters— $\frac{1}{4}$ to 16 lbs . . . . .	12 ..
Coffee Pots—1 to 4 quarts . . . . .	5 ..
Oil Lamps— $\frac{1}{4}$ pint to 2 quarts . . . . .	16 ..
Iron Handle Saucepans— $\frac{1}{2}$ pint to 2 qrts . . . . .	15 ..
Tin Liquor Funnels— $\frac{1}{4}$ pint to 2 gals. . . . .	12 ..
Tin Scales, round—7 to 12 inches . . . . .	5 ..
Tin Chamber Pails—painted and plain . . . . .	3 ..
Tin Dutch and Reflecting Ovens, each . . . . .	2 ..
Tin Dripping Pans and Ladles . . . . .	2 ..
Watering Pots—painted and plain . . . . .	3 ..
Chamber Candlesticks . . . . .	2 ..
Measures, all sizes—Cullenders . . . . .	3 ..
Sheet Iron Stove Pipe— $3\frac{1}{2}$ to 6 inch . . . . .	7 ..

Persons wishing to purchase would do well to examine the above stock.

Any quantity required can be furnished on seven hours' notice.

The highest price given for old Copper, Brass, Pewter and Lead.

**Patrick Canning,**

*Opposite the Premises of Messrs. M. Stewart & Co.*

OF THE BEST QUALITY.

**JEFFERY & GEORGE LASH,  
 BAKERS & CONFECTIONERS,  
 WATER STREET, ST. JOHN'S.**

*Bread supplied to families daily.*

All kinds of **CAKES** made at the shortest notice.

**WEDDING, CENTRE, AND ROLL CAKES,**

ICED, NEATLY ORNAMENTED, AND CAREFULLY PACKED FOR THE OUTPORTS. A VARIETY OF

**CONFITS, LOZENGES, CANDIE, PRESERVES, FRUITS, AND PICKLES,**

ALWAYS ON HAND. ALSO

**WINES, SPIRITS, COGNAC, ALES, PORTWINE, &c.**

OF THE BEST QUALITY.

LIC.

eral as-

, all of  
 sold 20  
 wfound-  
 sizes:

0 sizes.  
 4  
 5  
 6  
 7  
 8  
 9  
 10  
 11  
 12  
 13  
 14  
 15  
 16  
 17

well to  
 on seven

Brass,

g,  
 rt & Co.

**JOHN WILLS,**  
**PLUMBER, BRAZIER, &c.**

Begs to acquaint the Public generally that  
he manufactures to order every article  
or machine connected with the

**LEAD, COPPER, BRASS, IRON, OR TIN  
PLATE LINE,**

COMPRISING:—

Brass or Copper Lift and Force Pumps  
Lead Pumps and Pipes, for houses or ships  
Self-acting, Patent Lever, and Portable Wa-  
ter Closets

Slipper, Shower, and Vapour Baths—in  
Lead, Copper, or Galvanized Iron  
Houses heated with hot air, hot water, or  
steam

Lead, Copper, and Block Tin Pipes for  
Gas

Beer and Spirit Machines

Copper and Iron Stove Pipes

Galvanized Iron Gutters and Pipes for houses

Brass Cocks, Valves, &c. of every description

A lot of **GAS FITTINGS** and **PIPES** at  
less than first cost.

Every description of best Planished Tin  
Plate or Copper work done to order.

**Common Tin Plate Work,**

suitable for the Fishery, at low prices, (see  
printed list.)

*Water Street, St. John's, N.F.*

LS,  
R, &c.  
rally that  
y article  
n the  
OR TIN

Pumps  
s or ships  
table Wa-

Baths—in  
Iron  
water, or

Pipes for

for houses  
description  
PIPES at

shed Tin  
o order.

ork,  
rices, (see

**PHOENIX**  
**FIRE ASSURANCE COMPANY,**  
**LOMBARD STREET AND CHARING CROSS,**  
**LONDON,**  
**ESTABLISHED IN 1782.**

*For Insuring every kind of Property at  
Home or Abroad from Loss or  
Damage by Fire.*

**TRUSTEES AND DIRECTORS.**

- Sir Robert Harry Inglis, Bart., M.P., D.C.L.  
Mathias Attwood, Esq. James Horne, Esq.  
Decimus Burton, Esq. J. Dorrien Mages, Esq.  
Octavius E. Coope, Esq. John Masterman, Esq.  
Wm. Cotton, Esq., F.R.S. M.P., D.C.L.  
D.C.L. John Petty Muspratt, Esq.  
William Davis, Esq. Richard Price, Esq.  
Geo. Arthur Fuller, Esq. George Stanley Repton,  
Emanuel Goodhart, Esq. Esq.  
Henry Grace, Esq. Benjamin Shaw, Esq.  
Joseph Owen Harris, Esq. Alfred Thorp, Esq.  
Kirkman D. Hodgson, Esq. C Hampden Turner, Esq.  
E-q. Matthew Whiting, Esq.  
Thomas Hodgson, Esq. Thomas Wilson, Esq.

**AUDITORS.**

- John Davis, Esq. | John Hodgson, Esq.  
James Alexander Gordon, M.D.

**THOMAS RICHTER, Esq., Secretary**  
**WILNER HARRIS, Esq., Secretary for the Town**  
**Department.**

**JOHN SHAW, Esq., Architect and Surveyor.**  
*See next page.*

## THE PHOENIX OFFICE

*(Where Fire Insurances may be effected on  
the most favourable terms)*

Was established by a numerous Proprietary in January, 1782, upon principles of public utility. The promptitude and cheerfulness with which the most important losses have been made good by the Company are well known, and a large capital, in Government securities, is at all times held in readiness for that purpose.

The private fortune of every individual Shareholder in the Company is responsible for its engagements, and no person insured in this Office is liable for the losses of others, as in the case of Contribution Societies.

The undersigned having been appointed the Agents of the above Company for the Island of Newfoundland, are prepared to give every information as to rates of Premium, &c., on application, and to grant Policies of Insurance against Loss or Damage by Fire, on the spot, by which a saving of the Stamp Duty, (chargeable on all Policies issued in England,) will be effected.

**John M. Rendell & Co.**



# ALLIANCE

BRITISH AND FOREIGN  
LIFE AND FIRE ASSURANCE COMPANY

BARTHOLOMEW LANE, LONDON.

ESTABLISHED BY ACT OF PARLIAMENT.

CAPITAL—

*Five Millions Sterling.*

BOARD OF DIRECTION.

PRESIDENTS.

SAMUEL GURNEY, Esq.  
Sir MOSES MONTEFIORE, F.R.S.

DIRECTORS.

JAMES ALEXANDER, Junr., Esq.  
G. H. BARNETT, Esq.  
Sir E. N. BUXTON, Bart.  
Sir R. CAMPBELL, Bart.  
BENJAMIN COHEN, Esq.  
EDWARD FLETCHER, Esq.  
CHARLES GIBBES, Esq.  
WILLIAM GLAUSTONE, Esq.  
JAMES P. HOWARD, Esq.  
JOHN IRVING, Esq.  
LOUIS LUCAS, Esq.  
THOMAS MASTERMAN, Esq.  
THOMAS RICHARDSON, Esq.  
LIONEL N. DE ROTHSCHILD, Esq.  
OSWALD SMITH, Esq.  
H. M. THORNTON, Esq.

*Auditors* — Sir GEORGE CARROLL, SAMUEL  
GURNEY, Junr., Esq., ANDREW JOHNSTON, Esq

*Bankers* — Messrs. BARNETT, HOARES & Co.

 See next page.

*Actuary*—BENJAMIN GOMPERTZ, Esq., F.R.S.

*Secretary*—ANDREW HAMILTON, Esq.

*Physician*—JOHN R. HUME, M.D., Curzon St.

*Solicitor*—JOHN M. PEARCE, Esq.

*Surveyor*—THOMAS ALLASON, Esq.

---

**ESTABLISHED MARCH, 1824.**

---

Persons effecting Assurances with the ALLIANCE COMPANY, enjoy the following important Advantages.

**I.—PERFECT SECURITY.**—The large Capital, and nearly One Thousand Shareholders composing the Company, render the Security presented to the public undoubted.

**II.—MODERATE PREMIUMS OF ASSURANCE.**

The Rates of the Premiums of Assurance, for the greater part of LIFE, will be found lower than those in use in many of the older and most respectable offices:

The Premiums of Assurance on FIRE are the same as those which are demanded by the first class of Assurance Companies.

**III.—PARTICIPATION OF PROFITS BY THE ASSURED BOTH IN LIFE AND FIRE.**

THE PROFITS of the LIFE Department, appropriated every Five Years, are applied either to the reduction of the rate of the future Premium to be paid on the Policy, or to the increase of the Sum assured on the Life, as is most agreeable to the Assured; the party to make his choice at the time the proposition for Assurance is made.

The PROFITS of the FIRE Department appropriated to the Assured, are distributed at the close of each successive period of Five Years, in the form of a percentage on the Premiums which have been paid.

*See next page.*

IV.—Parties who obtain a settlement of losses by Fire are not thereby deprived of their right to participate in the profits of the Company.

V.—Losses by Lightning are made good.

The undersigned beg leave to announce, that having been appointed Agents for Newfoundland to the above Company, they are prepared to receive proposals for FIRE and LIFE INSURANCE, and to issue POLICIES on the spot, by which means a saving of the stamp duty on Policies will be effected.

**Robinson, Brooking & Co.**

St. John's, May 30, 1849.

**NATIONAL LOAN FUND  
LIFE ASSURANCE SOCIETY  
OF LONDON.**

**SAVINGS' BANK FOR THE WIDOW AND ORPHAN.**

EMPOWERED BY ACT OF PARLIAMENT.

**Capital, £500,000 Stg.**

*Exclusive of a Reserved Fund (Surplus Premiums) of £37,000 Sterling.*

**LOCAL DIRECTORS, HALIFAX, N.S.**

**THOMAS R. GRASSIE, Esquire, Chairman.**

John Strachan, Esq.

Thomas C. Kinnear, Esq.

Jon. Allison, Esq.

Hon. S. Cunard

John Duffus, Esq.

P. C. Hill, Esq., Manager

*Advantages offered by this Society.*

**PERFECT SECURITY**, arising from a large Capital totally independent of the Premium Fund.

**LOANS**.—Two-thirds of the annual Premiums paid, or half the Premiums for the first five years, which may remain on interest to be deducted from the amount of the Policy at the death of the assured.

**LOW RATES OF PREMIUM**.—The rates of Premium are as low as any Society of equal standing.

**DIVISIONS OF PROFITS**.—The Bonuses in this Society are declared annually and are permanent, and each year the Assured has the option of receiving the profits in CASH, in reduction of Premium, or in addition to the sum insured.

Premiums may be paid Annually, Half-Yearly or Quarterly.

Insurance may be effected for one year, for five years, or for life, with or without participation in the profits of the Society.

A liberal allowance for the surrender of policies.

Every information as to the Society's Rates of Premium, mode of Insurance, and blank forms of application, may be had at the office of the Subscriber, who has Pamphlets for gratuitous distribution, and all documents required for effecting Insurance.

J. B. BULLEY,  
*Sub Agent, Newfoundland.*

---

**JAMES M'KINNON,**

HAIR DRESSER, &c., &c.

*Opposite the Premises of Messrs. MURRAY & SMALL,  
Water Street, St. John's, Newfoundland.*

---

**Brushes, Combs, Perfumery, &c.**

Always on hand, on reasonable terms.

**FIRE POLICIES GRANTED BY THE AGENTS,**

ON APPLICATION,

*By which a saving of the Policy Duty is effected.*

THE

**ROYAL INSURANCE COMPANY,**

HEAD OFFICE—LIVERPOOL.

**Capital—TWO MILLIONS.**

TRUSTEES:—

John Shaw Leigh, Esq. | R.B.B.H. Blundell, Esq.

DIRECTORS:—

Josiah Booker, Esq.. *Chairman.*

Hugh J. Sanderson, Esq. } *Deputy Chairmen.*  
Charles Turner, Esq. }

George Armstrong, Esq.	Roger Lyon Jones, Esq.
Ralph Brocklebank, Esq.	James Lawrence, Esq.
Michael Bonsfield, Esq.	Thomas Lee, Esq.
John Campbell, Esq.	Francis Maxwell, Esq.
David Cannon, Esq.	Robert M'Andrew, Esq.
Thomas Dover, Esq.	Edmund Molyneux, Esq.
Richard Harbord, Esq.	J. Bramley Moore, Esq.
R. S. Henderson, Esq.	Henry Moore, Esq.
R. Brodhurst Hill, Esq.	James Pownall, Esq.
Thos. Dyson Hornby, Esq.	Archibald Sinclair, Esq.
John Charles Jack, Esq.	John Torr, Esq.

*Auditors*—William Titherington, Esq., and John Dickinson, Esq.

*Physician*—Richard Formby, M. D.

*Surveyor*—Samuel Holme, Esq.

*Surgeon*—Hugh Neill, Esq.

*Solicitor*—Septimus Booker, Esq.

☞ *See next page.*

## London Establishment.

DIRECTORS, &c.

Samuel Banker, Esq. | Wm. Wainwright, Esq.  
Robert Dudgeon, Esq. | George Young, Esq.

*Secretary to London Board*—John B. Johnston, Esq.

*Solicitor*—C. T. Jenkinson, Esq.

*Surgeons*—Eusebius A. Lloyd, Esq., Surgeon at St. Bartholomew's Hospital, and H.J. Sanderson, Jr. Esq., 29, Upper Berkley Street, Portman Square.

*Actuary and Secretary*—Percy M. Dove, Esq.

### FIRE BRANCH.

*Assurances are granted for a shorter period than a year.*

Fire Insurance will be effected at moderate rates of premium. The Company will ever distinguish itself by its promptness in the settlement of claims.

### LIFE BRANCH.

EXTRACT FROM RATES.

*Annual Premium for an Assurance of £100. for the Whole Term of Life.*

AGE.	RATES OF PREMIUM.					
	WITH PROFITS			WITHOUT PROFITS		
	£	s.	d.	£	s.	d.
20	2	6	10	2	2	8
30	2	17	3	2	12	4
40	3	14	1	3	8	6
50	5	0	9	4	14	1
60	7	14	4	7	6	0

Persons assured under the above rates in St. John's, Newfoundland, will have per mission to

 See next page

reside in any part of North America, to the Northward of 38 deg. north latitude, but not to the Westward of the Mississippi River. They may likewise travel, but not reside permanently, as far South as 35 deg. of north latitude, but not to the Westward of the Mississippi River.

They may also, if not sea-faring by profession, have permission to pass in decked vessels in time of peace, without any extra Premium—from any one part of Europe to another; from any part of North America to another, within the above limits; between any European Port and any North American Port, within the said limits.

The important advantages afforded by the Company in the Life Branch, will include the following, viz:—

The Guarantee of an ample Capital, and Exemption of the Assured from Liability of Partnership; Moderate Premiums; Large participation of Profits by the Assured, amounting to two-thirds of its net amount, which may be applied at the option of the party effecting the Assurance—

*1st—By the immediate payment of the sum appor-  
tioned.*

*2nd—By an equivalent reduction in the future pre-  
miums; or,*

*3rd—By an equivalent increase of the sum Assured.*

Small Charge for Management. Prompt settle-  
ment of Claims. All claims will be payable  
within three months after satisfactory proof of the  
death of the Life Assured, the Directors reserving  
to themselves the power to discharge any Claim  
immediately on its being established.

Assurances may be effected when needed with  
the utmost secrecy and despatch.

No Entrance Money, nor any charge except for the  
Policy Stamp.

N.B.—Detailed Prospectuses may be obtained  
at the Office.

**Brocklebank & Anthony.**

*Agents for Newfoundland.*

# MEDICAL HALL!

**J. J. DEARIN,**

OFFERS FOR SALE,

*At his Establishments, adjoining the premises of Messrs. Hunters & Co., and two doors West of Mr. John H. Warren's,*

A LARGE AND VARIED ASSORTMENT OF

**DRUGS, OILS, SPICES,**

**PERFUMERY,**

**PATENT MEDICINES,**

**Pickles, Sauces, Confectionery,**

**PAINTS, &c. &c.**

TOGETHER WITH AN EXTENSIVE ASSORTMENT OF

***Garden Seeds.***

These articles will be offered by wholesale and retail.

Out-harbour medical men supplied on the most liberal terms.

Medicine chests and prescriptions constantly dispensed.

Agencies received for the sale of every thing connected with his line of business.



LL!

o,

the pre-  
o., and  
H.

ENT OF  
CES,

NES,  
onery,

TMENT OF

esale and

the most

tantly dis-

very thing

**PETER ROGERSON & SON,**  
**COMMISSION MERCHANTS**  
AND  
**SHIP BROKERS,**  
SAINT JOHN'S,  
NEWFOUNDLAND.

**JOSEPH STRAFFORD,**  
**AUCTIONEER & COMMISSION MERCHANT,**  
WATER STREET,  
ST. JOHN'S, NEWFOUNDLAND,

Will be happy to receive consignments of all kinds  
of goods for sale, for which payments will be made  
promptly, and every satisfaction given.

**J. LYON,**  
**CLOCK AND WATCH MAKER,**  
AND  
**JEWELLERY REPAIRER,**  
WATER STREET,  
ST. JOHN'S, NEWFOUNDLAND.

**W. L. MCKAY,**  
**CHEMIST & DRUGGIST,**  
WATER STREET,  
ST. JOHN'S, NEWFOUNDLAND.

# A. R. M<sup>c</sup>LEOD

Begs leave to acquaint the inhabitants of St. John's  
and the Outports, that the following

## CONFECTORY,

### LOZENGES, CANDIES, AND CAKES,

may be always had at his Shop in Water Street,  
opposite Mr. O'Dwyer's premises.

#### CAKES.

Rich Bridal Cakes—  
iced & ornamented  
Do Do—plain iced  
Plum Cake  
Plain Cake  
Sponge Cake  
Savoy  
Rout Cakes  
Fancy Almonds  
Fancy Twist  
Tumbals  
Maccaroons  
Ratiffus  
Merangues  
Ginger Wafers.  
Funeral Biscuit  
Hunting Nuts  
Walnuts

#### CONFITS.

Almonds  
Caraway  
Pearl do  
Coriander  
Shells  
Nonpareils  
Coriander Balls  
Coloured do  
Rings

Cassia Buds  
Stomach Carraways  
Pearl Almonds

#### LOZENGES.

Finest Peppermint  
Common do  
Cinnamon  
Rose  
Tolen  
Ginger  
Bath  
Lavender  
Winter Green  
Cayenne  
Lemon

#### CANDIES.

Sticks Peppermint  
Do Lemon  
Do Cinnamon  
Peppermint Drops  
Acid Do  
Lemon Do  
Coloured Do  
Tablet Shapes  
Rock Sugar  
Cream Candy  
Marbles and Lumps  
Sugar Toys  
Sugar Barley

A O A R D .

# DANIEL HILL & CO.

Grateful for past favours, beg to acquaint the public that they have always  
on hand a varied Stock of

## PLAIN & FANCY GOODS,

Which they select with much care, and can confidently recommend.

*Hat Emporium, St. John's, Newfoundland.*

St. John's  
wing

**R. P.**

**AKES,**

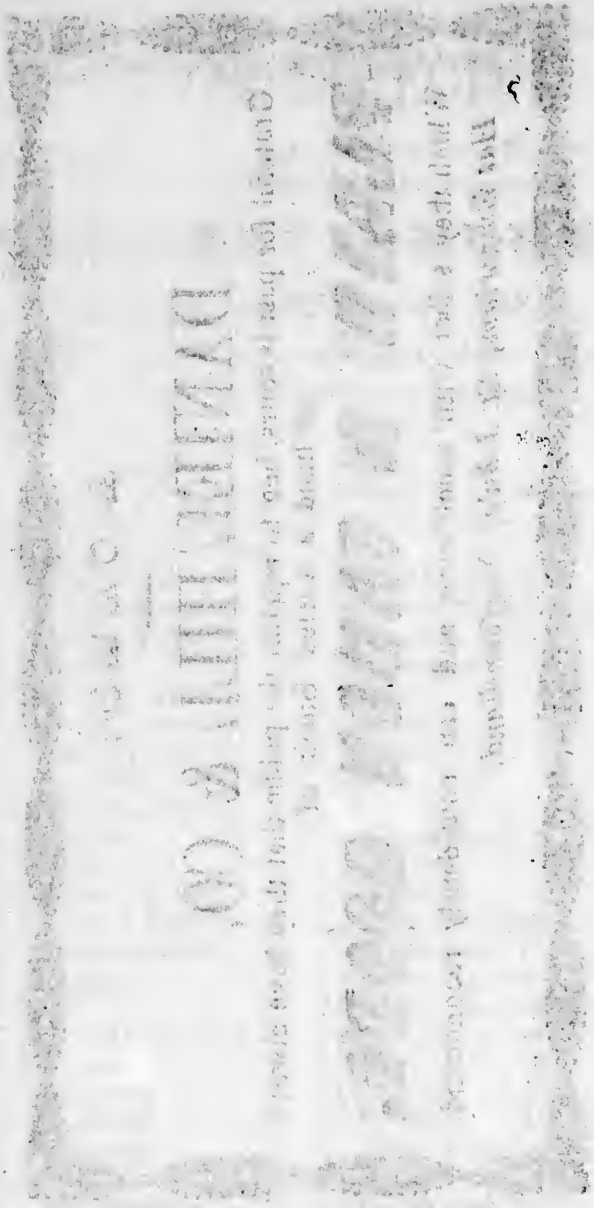
er Street,  
es.

rraways  
nds

GES.  
ermint  
do

ES.  
rmint  
n  
non  
rops  
Do  
Do  
Do

Lumps



THE NATIONAL BANK OF THE CITY OF NEW YORK

DEPARTMENT OF THE CITY OF NEW YORK

OFFICE OF THE COMMISSIONER OF THE LAND OFFICE

NEW YORK, N. Y.

RECEIVED

APR 1 1880

THE NATIONAL BANK OF THE CITY OF NEW YORK

I  
F  
P  
K  
O  
I  
P  
A  
A  
E  
E  
C  
C  
C

# ITALIAN AND GROCERY WAREHOUSE!

*In the New Shops, Baine, Johnston &  
Co.'s Stone Buildings, Water Street.*



## The Subscriber

Has constantly on hand a large and valuable assortment of the following articles of the very best quality, and on accommodating terms, viz:—

Pickles, Sauces	Preserved Fruit
Ketchup, Capers	Dried do
Olives, Vinegar	Jams and Jellies
Lime Juice, Spices	Extracts for Flavouring.
Preserved Meats	

## PERFUMERY.

Ale and Porter	Candles, Hams
Arrowroot, Sago	Mustard, Oatmeal
Bacon, Blue, Blacking	Pease, Rice, Soap
Bath Brick, Butter	Soda, Salt, Starch
Barley, Broma, Cocoa	Sugar, Snuff
Cocoa Paste	Brandy, Whiskey
Chocolate, Crackers	Gin, Rum
Cigars, Coffee, Cheese	Old Tom.

EVERY DESCRIPTION OF

## WINES.

*A large assortment of TEAS, &c. &c. &c.*

**James Bruce.**

# DAVID MUIR,

**GOLD & SILVER-SMITH,**

*Opposite the Premises of Messrs. Clist, Wood & Co.  
Water Street,*

Has constantly on hand a neat assortment of

**JEWELLERY**

AND

**PLATED SILVERWARE,**

Viz:—

Gold Fancy Rings	Blue Steel, Glass and
Do Ear-rings and	Pebble Spectacles,
Drops	(concave and con-
Do Brooches	vex)
Do and Silver Pen-	Children's Games and
cil Cases	Toys
Plated Locketts and	Chess Men
Brooches	Ivory and Shell Combs
Plated Shawl Pins	Infants' Hair Brushes
Plated Silver Candle-	Cloth, Nail, and Tooth
sticks, Snuffers and	Brushes
Trays, and Castor	Wedding Rings
Stands	Children's Corals and
Silver Thimbles	Bells.
Gilt and Steel Beads	

---

**GOLD AND SILVER WORK MADE TO ORDER.**

☛ *Old Gold and Silver bought, or taken  
in exchange for new.*

---

**SAMUEL KNIGHT,**  
**GENERAL DEALER AND SHOP-KEEPER,**

*Opposite Messrs. Baine, Johnston & Co.'s Shop,*

**WATER STREET,**

**ST. JOHN'S,**

**IMPORTER OF**

*Garden Seeds,*

**CHINA AND EARTHENWARE,**

**BASKETS AND BRUSHES,**

**FISHING RODS & TACKLE,**

**POWDER AND SHOT,**

**LONDON CONFECTIONS,**

**SPICES, ISINGLASS,**

*Brown Windsor Soap, in bars, &c. &c.*

**A GENERAL ASSORTMENT OF**

**GROCERIES**

Always on hand, of the best quality.

**OILED CLOTHING,**

Manufactured and supplied by wholesale  
on moderate terms.

**THOMAS McCONNAN,**

**BOOKSELLER AND STATIONER,**

**WATER STREET,**

**ST. JOHN'S, NEWFOUNDLAND.**

**PHILIP KNIGHT,**

**WHOLESALE AND RETAIL DEALER IN**

**PROVISIONS,**

**GROCERIES,**

**SPIRITS, WINES,**

**&c. &c. &c.**

**WATER STREET,**

**ST. JOHN'S, NEWFOUNDLAND.**

**GROCERY & PROVISION STORE!**

**THE SUBSCRIBER**

Has always on hand a superior stock of articles in the above line, which will be disposed of at the

**Lowest Remunerating Prices,**

**AT HIS PREMISES**

**THIRD SHOP EAST OF MESSRS. BOWRING BROTHERS.**

**Duncan Weir.**

**NO**

Keep  
- sal

Manu  
will  
c

Boats  
Tea  
Round  
Tea  
Tea C  
Coffee  
Oil L  
Sauce  
Liquor  
Scale  
Tin C  
Dutch  
Tin  
Water  
Cham  
Meas  
Sheet  
Griffi  
Horn  
Glass  
Venti

to ex  
can b



**NOTICE TO THE PUBLIC.**

**MALONEY & SHEEHAN**

Keep always on hand, and offer by Wholesale and Retail, a general assortment of

**TINWARE,**

Manufactured in St. John's by machinery, which will be sold Twenty per cent. cheaper than can be found in any other Establishment in Newfoundland, comprising the following articles and sizes.

- Boats Kettles, from  $\frac{1}{2}$  to 12 gallons . . . 10 Sizes.
- Tea Kettles, from 1 to 22 quarts . . . . . 14 ..
- Round Tin Pans, 1 to 20 quarts . . . . . 15 ..
- Tea Pots, 1 to 6 quarts . . . . . 5 ..
- Tea Cannisters,  $\frac{1}{2}$  to 16 lbs. . . . . 12 ..
- Coffee Pots, 1 to 4 quarts . . . . . 5 ..
- Oil Lamps,  $\frac{1}{2}$  pint to 2 quarts . . . . . 16 ..
- Saucepans,  $\frac{1}{2}$  pint to 2 quarts . . . . . 15 ..
- Liquor Funnels,  $\frac{1}{2}$  pint to 2 gallons . . . . . 12 ..
- Scale Bottoms, 7 to 12 inches . . . . . 5 ..
- Tin Chamber Pails, painted and plain . . 3 ..
- Dutch and Reflecting Ovens, each . . . 4 ..
- Tin Dripping Pans and Ladles . . . . . 3 ..
- Watering Pots, painted and plain . . . . 6 ..
- Chamber Candlesticks, plain & Japanned 7 ..
- Measures, all sizes; Cullenders . . . . . 4 ..
- Sheet Iron & Copper Stove Pipe, 3 to 8 in. 10 ..
- Griffith's Patent Tea and Coffee Pots, ea. 5 ..
- Horn Lanthorns, from 4 to 9 inches . . . 5 ..
- Glass do from 4 to 7 inches . . . . . 5 ..
- Ventilators and Chimney Tops, each . . . 6 ..

**HALL LAMPS made to order.**

Persons wishing to purchase would do well to examine the above stock, any quantity required can be furnished at six hours' notice.

*Premises opposite Mr. J. H. Warren's,*

**WATER STREET.**

# A. & R. BLACKWOOD,

LADIES' AND GENTLEMEN'S

Hair Cutters and Wig Makers,

AND

**PERFUMERS,**

*Opposite the Premises of Messrs. McBride & Kerr,*  
Have constantly on hand,

**A WELL SELECTED STOCK OF GOODS,**

Among which are the following

Hair, Cloth, Hat, Flesh, Tooth, Nail, Comb, Curl,  
Shaving, and Plate Brushes

Dressing, Small-tooth, Side, Pocket, Braid, and  
Jenny Lind Combs

Tortoise shell, Dressing, Pocket, and Side Combs

Genuine Eau de Cologne

French and English Perfumes

Windsor and Fancy Soaps

Oils, Pomades, and Creams

Oldridg's, Perry's, and Churcher's Balm and Hair  
Restorer

Rowland's Oil, Kalydor, and Odonto

Atkinson's Bears' Grease

Hendry's Cold Cream and Hair Wash

Silver and Steel Thimbles

Purse Slides and Tassels

Gold, Silver and Steel Beads

Knitting and Netting Needles

Pearl, Ivory, Bone and Steel Crossha Hooks

Accordions, Violins

Crossha and Accordion Instruction Books

Walking Canes and Life Protectors

Clark's Lamps and Mortars, Float Lights.

**WIGS, FRONTLETS, BANDS, PLAITS,**

**RINGLETS,**

&c. &c. &c.

ON HAND, AND MADE TO ORDER.

T

A N

H

The  
Stom  
fluids  
Whil  
all be  
renew  
disea  
give  
mind.  
conve  
able  
fluenc  
is inn  
yet po

Better  
remed  
or nau  
hindra  
ful, b  
Port V  
the We  
Dollar  
furthe  
the cu  
other  
comm  
Grave  
matist  
the L  
Cough

## THE SUGAR COATED PILLS!

### A NEW SARSAPARILLA PREPARATION.

#### HALSEY'S PILLS ARE UNLIKE ALL OTHERS!

They act directly on those vital organs of the Stomach, Liver, Kidneys, &c., which secrete the fluids and separate the impurities from the blood. While they purge from the stomach and bowels all bilious and morbid matter, they cleanse and renew the blood, thereby destroying the seeds of disease. HALSEY'S PILLS do not weaken, but give strength and animation to both body and mind. They neither cause griping, nor any inconvenience whatever. The patient is better able to attend to business while under their influence than before taking them. Their action is innocent, yet efficient; are mild in operation, yet powerful in restoring health.— 1s.3d. per Box.

#### HALSEY'S

## FOREST WINE!

Better, pleasanter, and more effective than any remedy ever discovered; cures without purging or nauseating; can be taken at any time without hindrance from business; and possesses a delightful, bitter flavour, almost equal in taste to good Port Wine, and by far the *Cheapest Medicine in the World*, being put up in quart bottles for One Dollar, while the contents of one bottle goes further, and produces ten times as much good, in the cure of disease, as the same quantity of any other remedy in use. The Forest Wine is recommended for the permanent cure of Dropsy, Gravel, Jaundice, Dyspepsia, Costiveness, Rheumatism, Gout, Loss of Appetite, Complaints of the Liver, Heart, Kidneys and Stomach, Colds, Coughs, and Consumptive Declines. Sold by

**A. & R. Blackwood,**

*Agents for Newfoundland.*

# APOTHECARIES HALL!

**Thomas McMurdo & Co.**

WHOLESALE AND RETAIL

CHEMISTS and DRUGGISTS,

*Opposite Messrs. Baine, Johnston & Co.'s.*

In returning their grateful acknowledgments for the liberal share of patronage bestowed on them, beg to announce to their friends and the public, that being about to

**Open their New Premises,**

everything in their line of business will be kept of the very best description, and at the very lowest possible prices.

OF WHOM ALSO MAY BE HAD CHOICE

**PERFUMERY,**

**COMBS,**

**HAIR, NAIL, AND TOOTH BRUSHES,**

**OILS, PAINTS, SPICES,**

**PICKLES, SAUCES,**

**&c. &c. &c.**

WA

Oppo

NAV

PAST

Ne

ALW  
Wines  
scriptio

The  
second



**W. T. PARSONS,**  
**WATCH & CLOCK MAKER,**

*Opposite the Premises of Messrs W. & H. Thomas  
& Co., Water Street, St. John's.*

**QUADRANTS** silvered and adjusted.

**NAVAL, MILITARY, AND COMMERCIAL**  
**HOTEL,**

BY

**J. C. TOUSSAINT,**  
**PASTRY COOK, CONFECTIONER, AND GENERAL**  
**RESTAURATEUR.**

*Near the Custom House and Queen's Wharf.*

**ALWAYS ON HAND**—The best and choicest of  
**WINES, SPIRITS, MALT, and CORDIALS,** of all de-  
scriptions.

The House is fitted up in a superior style for  
accommodation and comfort.

**SUPERIOR BILLIARD TABLE.**

**MORRISON & SON,**  
**Fashionable Boot Makers.**

QUEEN'S STREET,

ST. JOHN'S, NEWFOUNDLAND.

**SAMUEL LANGLEY,**  
**COMMISSION MERCHANT, AUCTIONEER,**  
AND  
**BROKER,**

ST. JOHN'S, NEWFOUNDLAND.

**CUSTOM HOUSE FORMS, &c.**

FOR SALE

*At the Office of the "Morning Courier,"*

THE FOLLOWING

**BLANK FORMS,**

NEATLY PRINTED ON GOOD PAPER.

**C**USTOM HOUSE ENTRIES & WARRANTS  
SHIPS' ARTICLES Charter Parties  
COLONIAL BONDS  
BILLS OF LADING  
BILLS OF EXCHANGE—in books of 6, 12  
and 24 sets each  
PROMISSORY NOTES—in Books of 1, 2 and 3  
quires  
MERCHANTS' ORDER BOOKS—1, 2 and 3  
quires each  
FISH RECEIPTS—in Books of 1, 2, and 3 quires  
each  
APPRENTICES INDENTURES, &c., &c. &c.

M  
Is Prin  
Offic  
B

B  
Is neat

AN  
SOCIET

PO

BUSINE

POWE

BILLS

Law

CIRC

T

N,  
ERS.  
DLAND.  
Y,  
NEER,  
c.  
ourier,"  
R.  
RANTS  
es  
A 6 12  
2 and 3  
2 and 3  
3 quire-  
&c. &c.

THE  
**MORNING COURIER,**

Is Printed and Published by JOSEPH WOODS, at his  
Office, in Mr. R. O'DWYER'S Brick Buildings,  
Beck's Cove, Water Street, every WED-  
NESDAY and SATURDAY morning,

WHERE EVERY DESCRIPTION OF

**BOOK AND JOB PRINTING**

Is neatly executed at the shortest notice the nature  
of the work will admit of—viz.

**ANNUAL AND SPECIAL REPORTS;  
SOCIETIES' CONSTITUTIONS & BYE LAWS, SERMONS,**

AND ALL OTHER SPECIES OF

**PAMPHLETS.**

**POSTING AND HAND BILLS.**

**BUSINESS, DIRECTION, INVITATION, AND OTHER**

**CARDS.**

**POWERS OF ATTORNEY, DECLARATIONS.**

**BILLS OF LADING, BILLS OF EXCHANGE.**

AND ALL KINDS OF

**Law & Commercial Blanks,**

**CIRCULARS, CATALOGUES, NOTICES,**

**Tabular and Rule Work**

OF EVERY VARIETY,

**BILL HEADS, &c. &c.**

**The ALMANAC for 1851**

Will be embellished with elegantly executed Engravings of the following Public Buildings :—

- The Custom House.
- The Colonial Building.
- The Market House.
- The Bank of British North America.

H  
F  
L  
C  
P  
P  
S  
F  
P  
P  
W  
P  
P  
C  
P  
M  
V



**HER MAJESTY'S MINISTERS.**

**First Lord of the Treasury—Right Hon. Lord John Russell.**

**Lord Chancellor—Lord Cottenham.  
Chancellor of the Exchequer—Right Hon. Sir Charles Wood, Bart.**

**President of the Council—Marquis of Lansdowne.  
Privy Seal—Earl of Minto.**

**Secretary of State, Home—Sir George Grey, Bart.  
Foreign—Viscount Palmerston.  
Colonies—Earl Grey.**

**First Lord of the Admiralty—Earl of Auckland.  
President of the Board of Control—Sir John Cam Hobhouse, Bart.**

**President of the Board of Trade—Right Hon. Henry Labouchere.**

**Woods and Forests—Earl of Carlisle.  
Paymaster of the Forces—Right Hon. T. B. Macaulay.**

**Postmaster General—Marquis of Clanricarde.  
Chancellor of Duchy of Lancaster—Lord Campbell**

*(The above form the Cabinet.)*

**Field Marshal Commander of the Forces—Duke of Wellington.**

**Master General of the Ordnance—Marquis of Anglesea.**

**Vice President of the Board of Trade and Paymaster General—Earl Granville.**

**Secretary at War—Right Hon. Fox Maule.**

**Master of the Mint—Right Hon. R. L. Sheil.**

**Secretary of the Admiralty—H. G. Ward, Esq.**

1851

y execu-  
g Public

merica.

Joint Secretaries of the Treasury—Henry Tufnell, Esq. and John Parker, Esq.

Home Under Secretaries—Sir Denis LeMarchant, Bart., and S. M. Phillipps, Esq.

Foreign Under Secretaries—Right Hon. E. J. Stanley, and H. Unwin Addington, Esq.

Colonial Under Secretaries—Benjamin Hawes, Esq. and Herman Merrivale, Esq.

Attorney General—Sir John Jervis.

Solicitor General—Sir John Romilly.

Judge Advocate General—Right Hon. W. G. Hater.

Lord Advocate of Scotland—Rt. Hon. A. Rutherford.

#### LAW COURTS.

*Chancery*—High Chancellor, Lord Cottenham.

*Queen's Bench*—Chief Justice, Right Hon. Lord Deaman.

*Common Pleas*—Chief Justice, Right Hon. Sir Thomas Wilde.

*Exchequer*—Chief Baron, Right Hon. Sir Frederick Pollock.

*Admiralty*—Judge, Right Hon. Stephen Lushington, L.L.D.

#### THE QUEEN'S HOUSEHOLD.

Mistress of the Robes—Duchess of Sutherland.

Lord Chamberlain—Earl Spencer.

Lord Steward—Earl Fortescue.

Master of the Horse—Duke of Norfolk.

#### IRELAND.

Lord Lieutenant of Ireland—Earl of Clarendon.

Lord Chancellor—Right Hon. M. Brady.

Secretary of Ireland—Right Hon. Sir W. Somerville, Bart.

Attorney General—J. H. Mouahan, Esq.

Solicitor General—J. Hatchell, Esq.

**File-Tex**  
**Single Copy Pamphlet Cover**

**Grade V**

**Made in all Sizes**

**MacMILLAN OFFICE APPLIANCES COMPANY**

