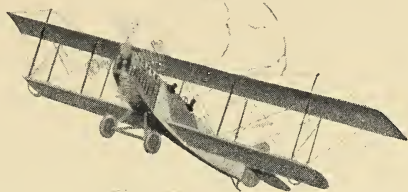


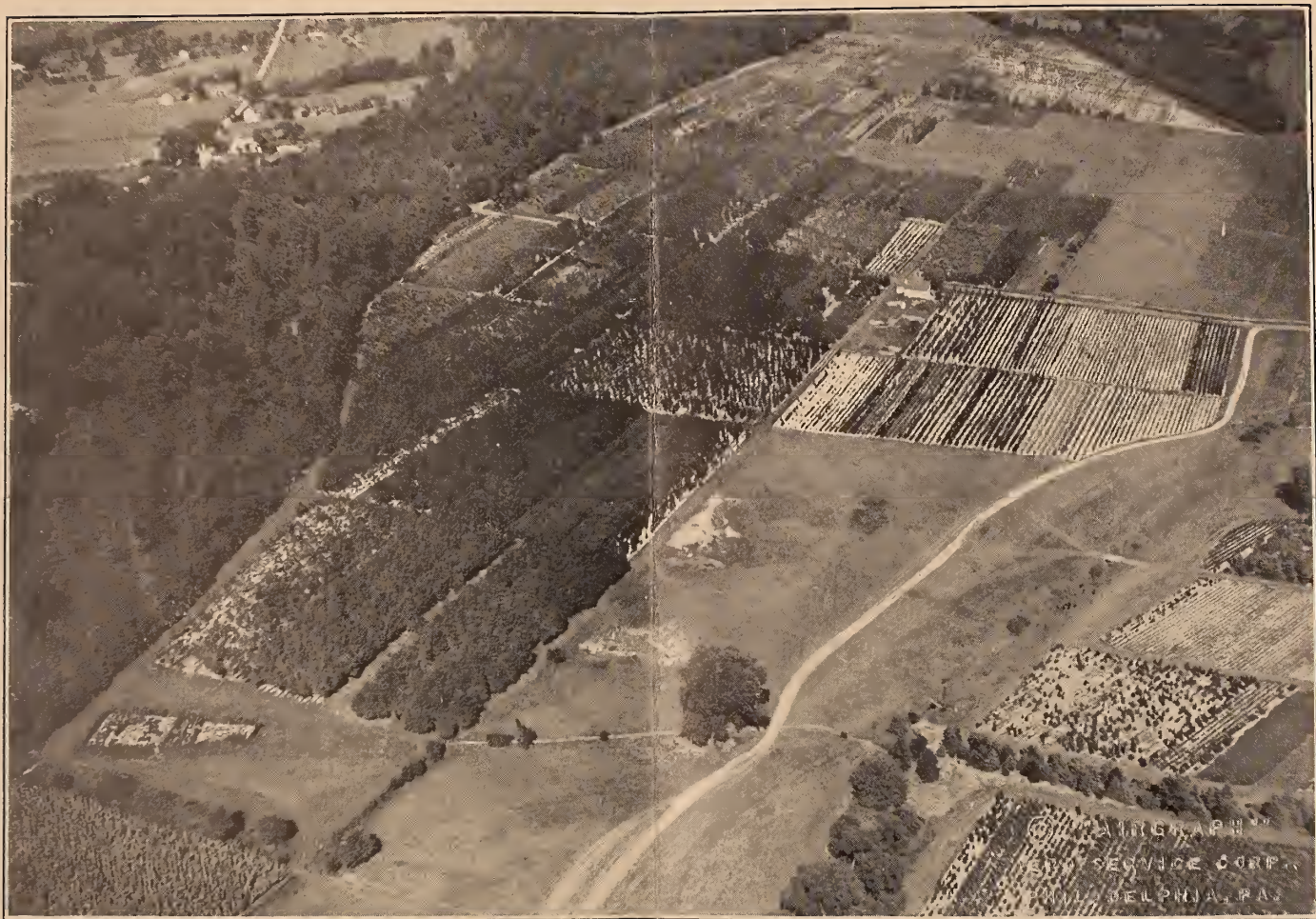
Historic, Archive Document

Do not assume content reflects current scientific knowledge, policies, or practices.



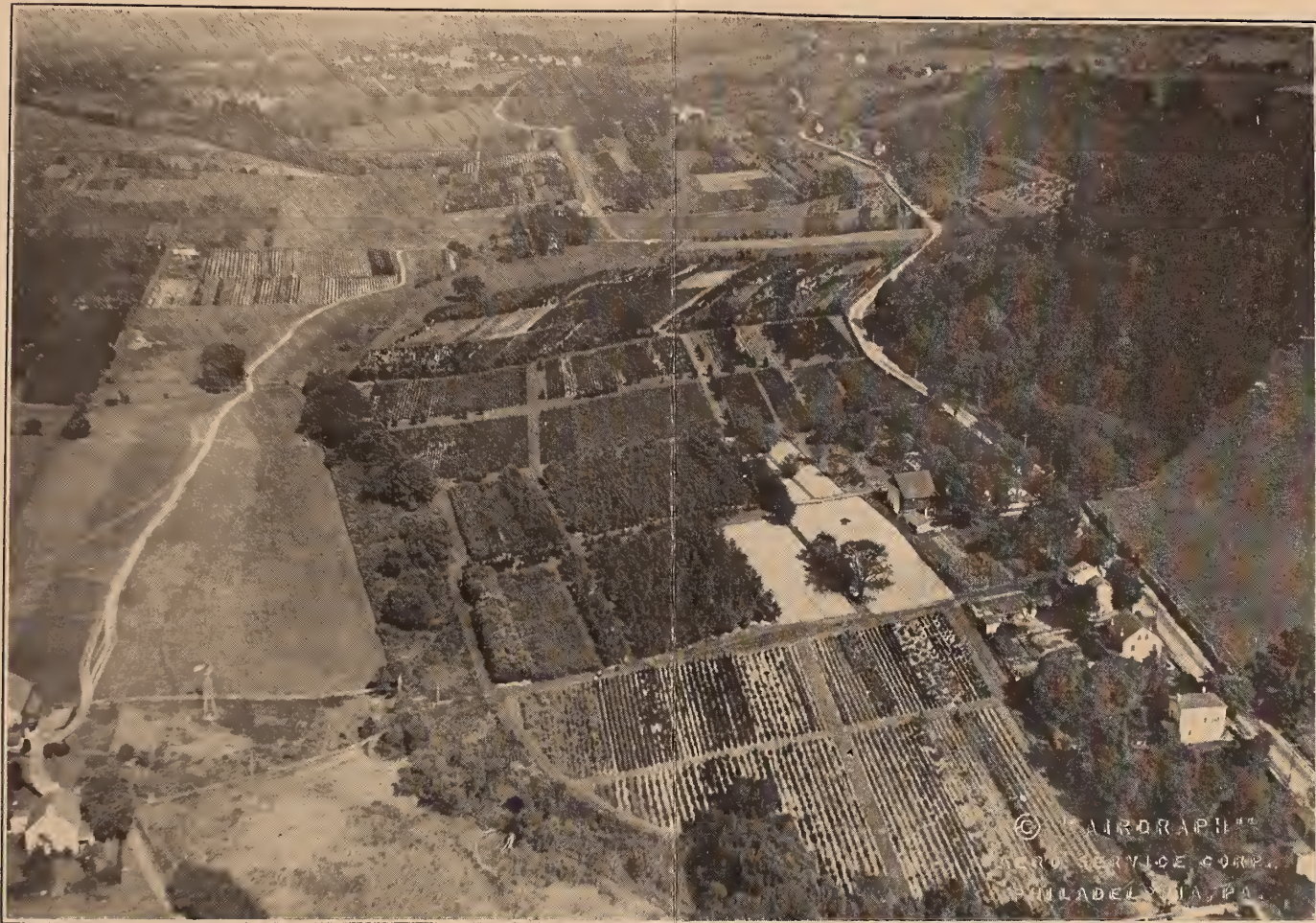
*Andorra
Nurseries
from the
Clouds*





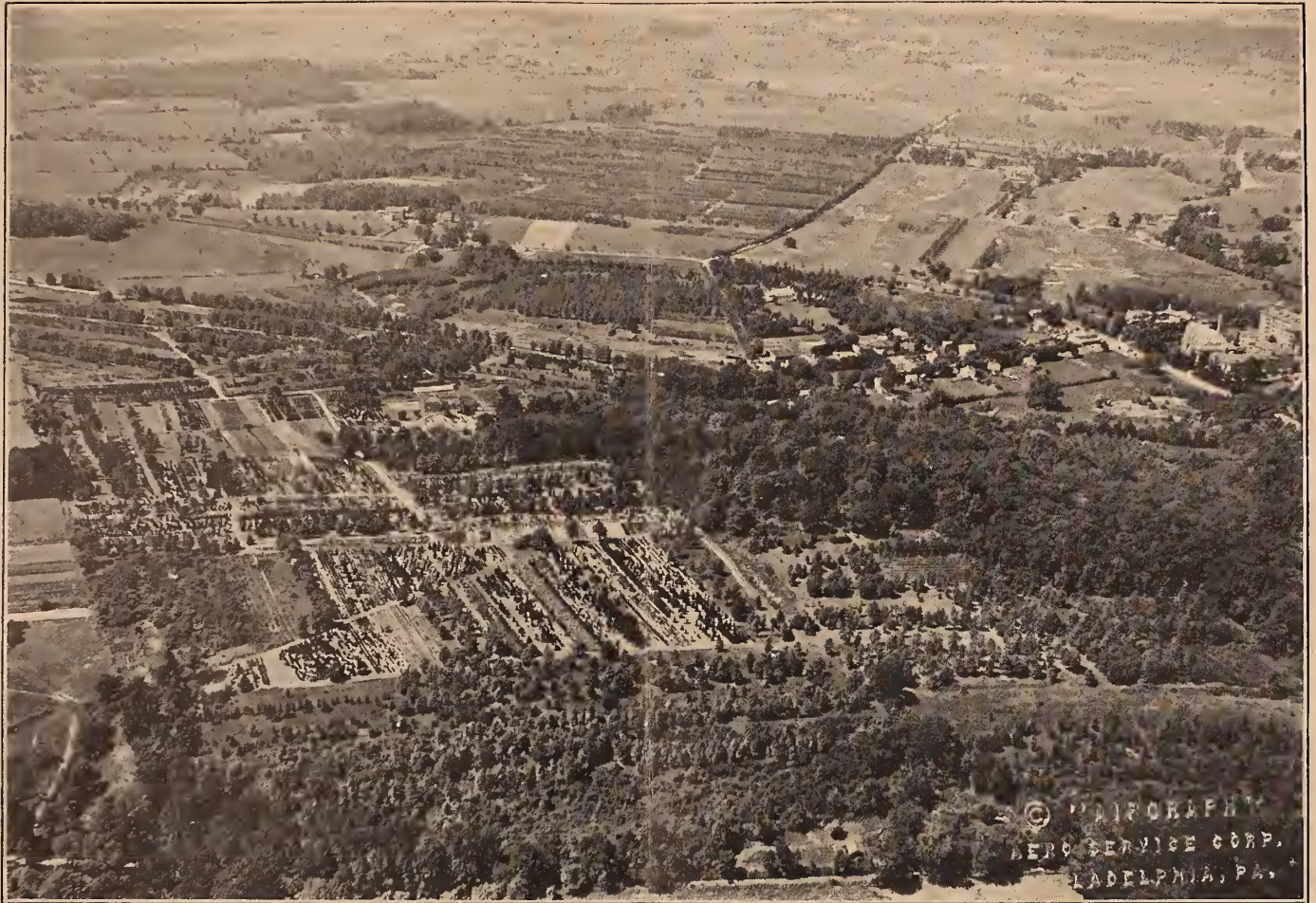
ANDORRA NURSERIES, SPRING MILL VALLEY SECTION, NORTH

View extending up the Spring Mill Valley, east from the Schuylkill River. It was down this valley that the Colonial Army under the Marquis Lafayette moved September 14, 1777, crossing the river at Spring Mill, after skirmishes with the British under General Howe at Barren Hill, preparatory to encampment at Valley Forge.



ANDORRA NURSERIES, SPRING MILL VALLEY SECTION, SOUTH

The Spring Mill Section is located on the Ridge Road, the direct highway between Philadelphia and Reading, and can be reached from the Main Line residential section of Philadelphia over the newly completed bridge at Conshohocken, or from Germantown and Chestnut Hill, via Stenton Avenue and West on City Line to the Wissahickon Drive.



ANDORRA AND WHITEMARSH SECTIONS, ANDORRA NURSERIES (Established 1886)

Fourteen miles from the center of Philadelphia, in the Whitemarsh and Spring Mill Valleys and stretching from the northern entrance of the Wissahickon Drive west to the Schuylkill River at Spring Mill, extend the eleven hundred acres of the Andorra Nurseries.

