

UNIT \_\_\_\_\_ No. \_\_\_\_\_

DATE TAKEN \_\_\_\_\_

WHERE TAKEN \_\_\_\_\_

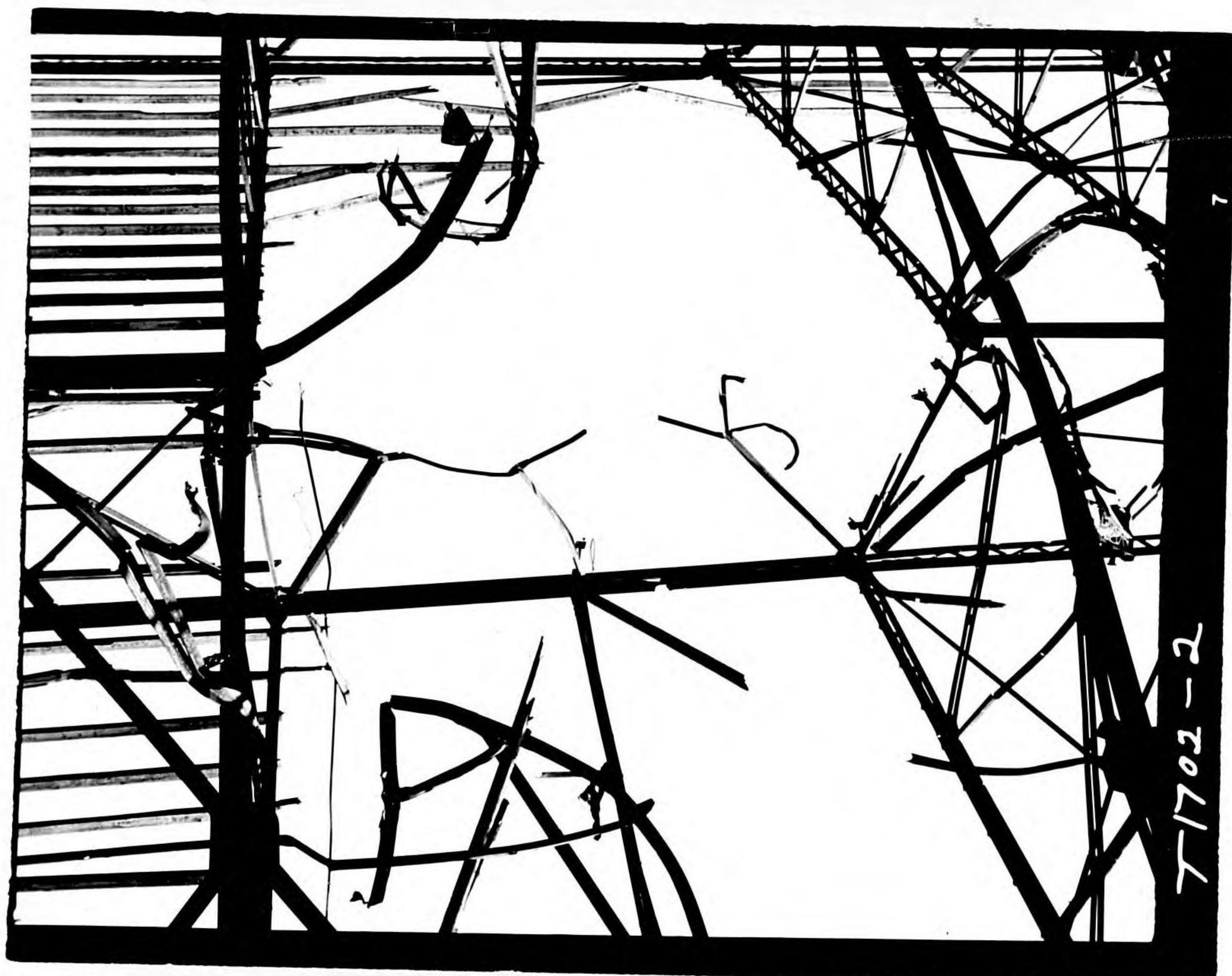
**GIVE COMPLETE STORY OF PICTURE**

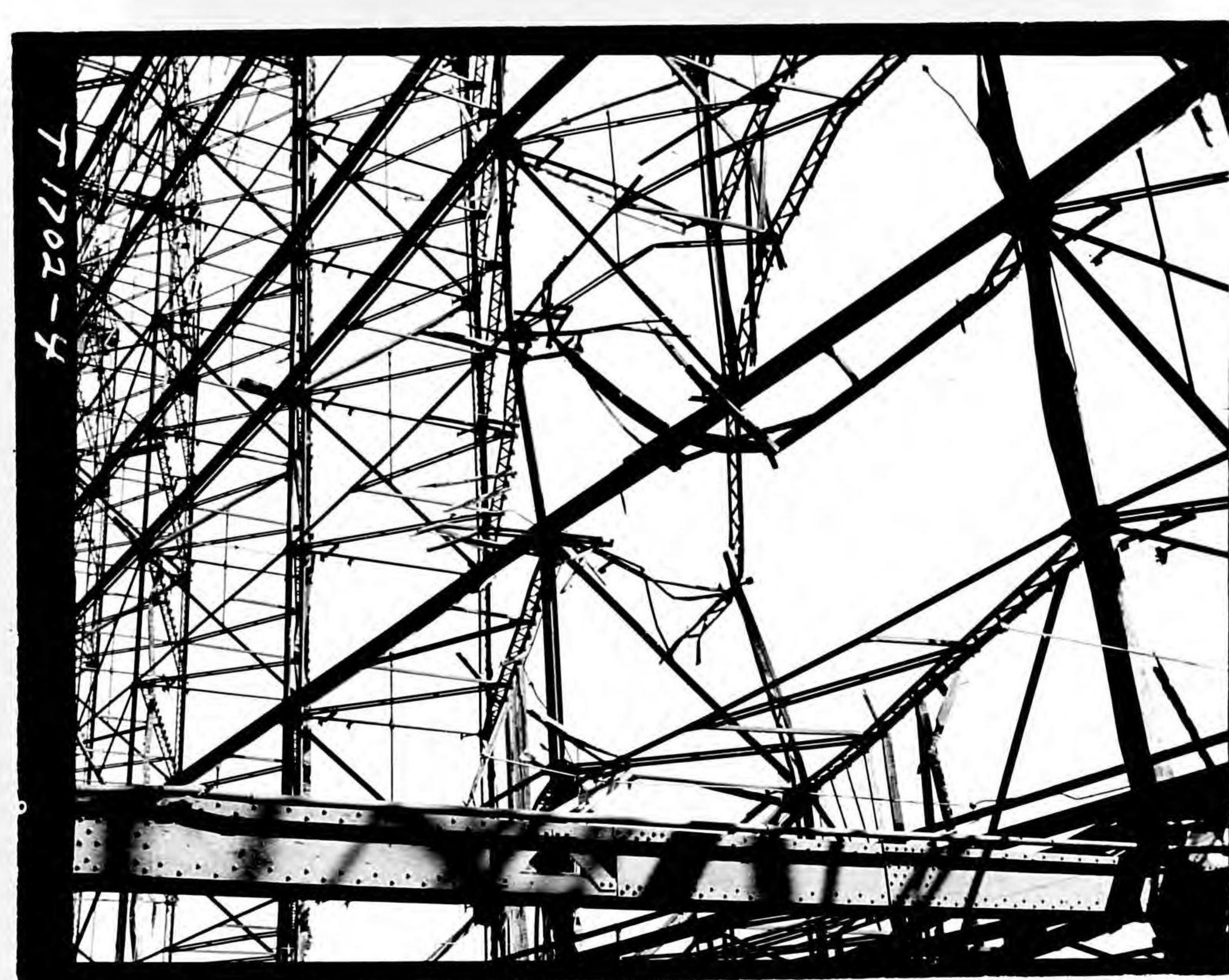
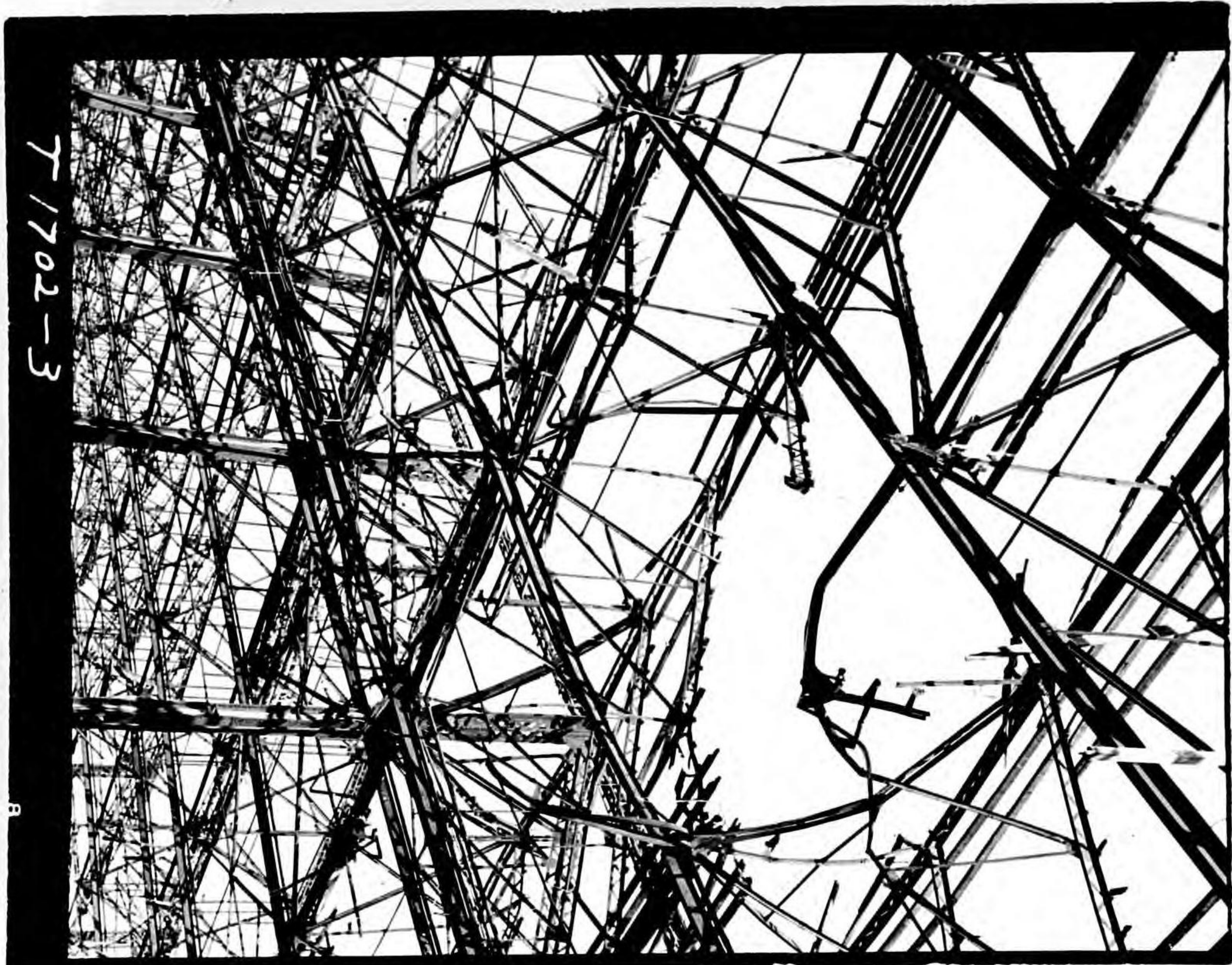
Include following where applicable:  
Names, with initials or first names, rank and hometown; DETAILS of occasion or action; ALTITUDE flown and FOCAL LENGTH of lens (in all aerial photos).

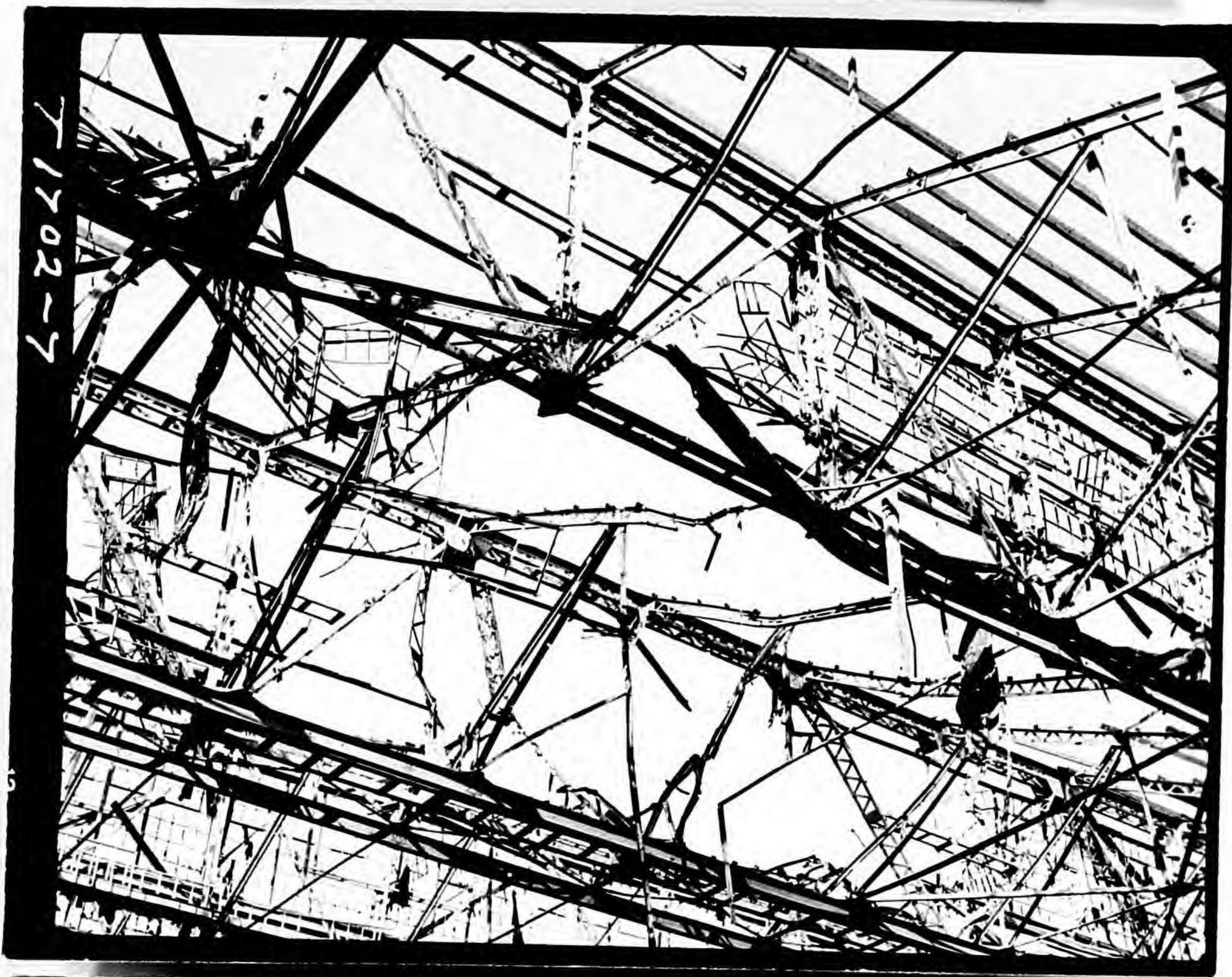
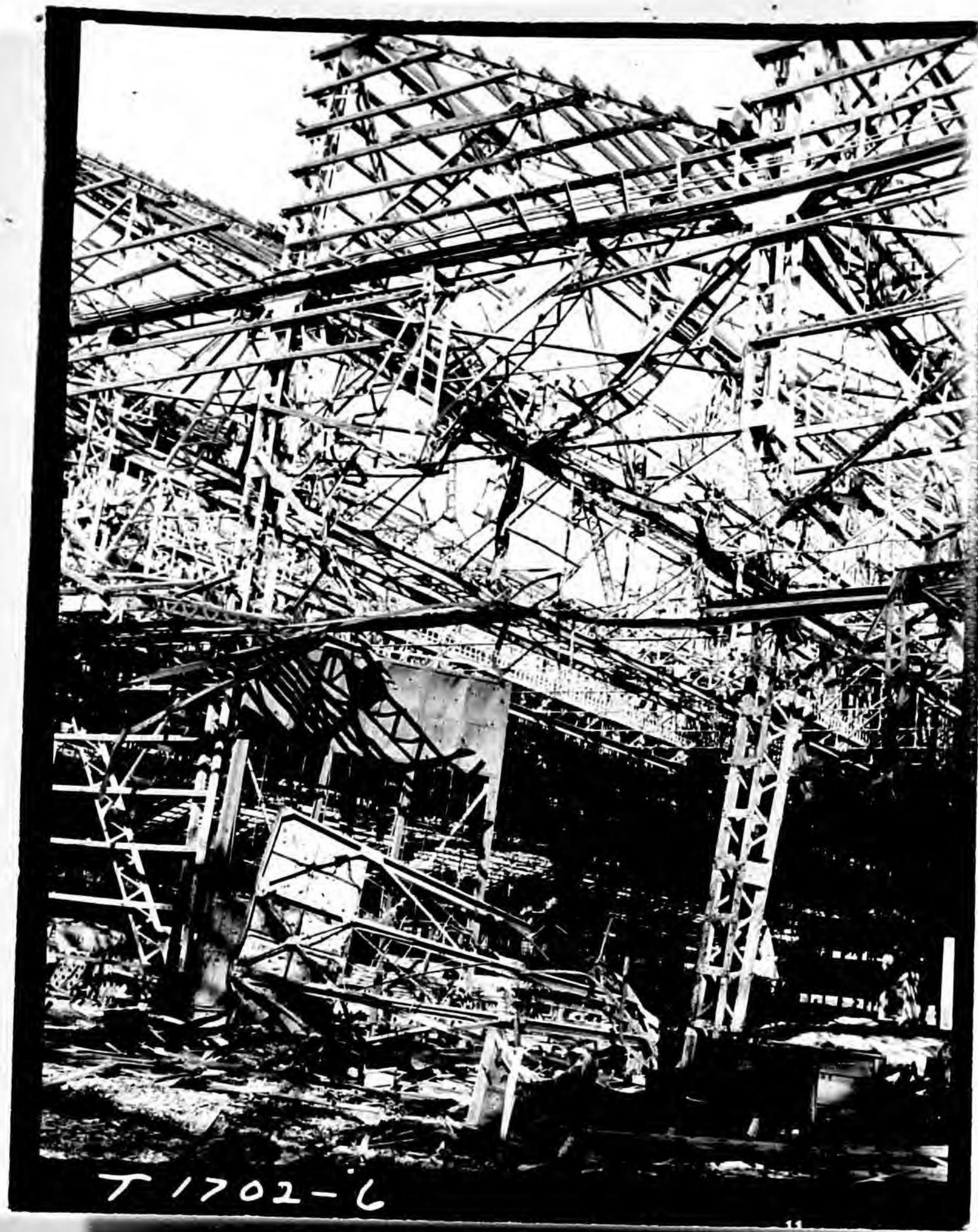
**OFFICIAL U. S. NAVY PHOTOGRAPH.**

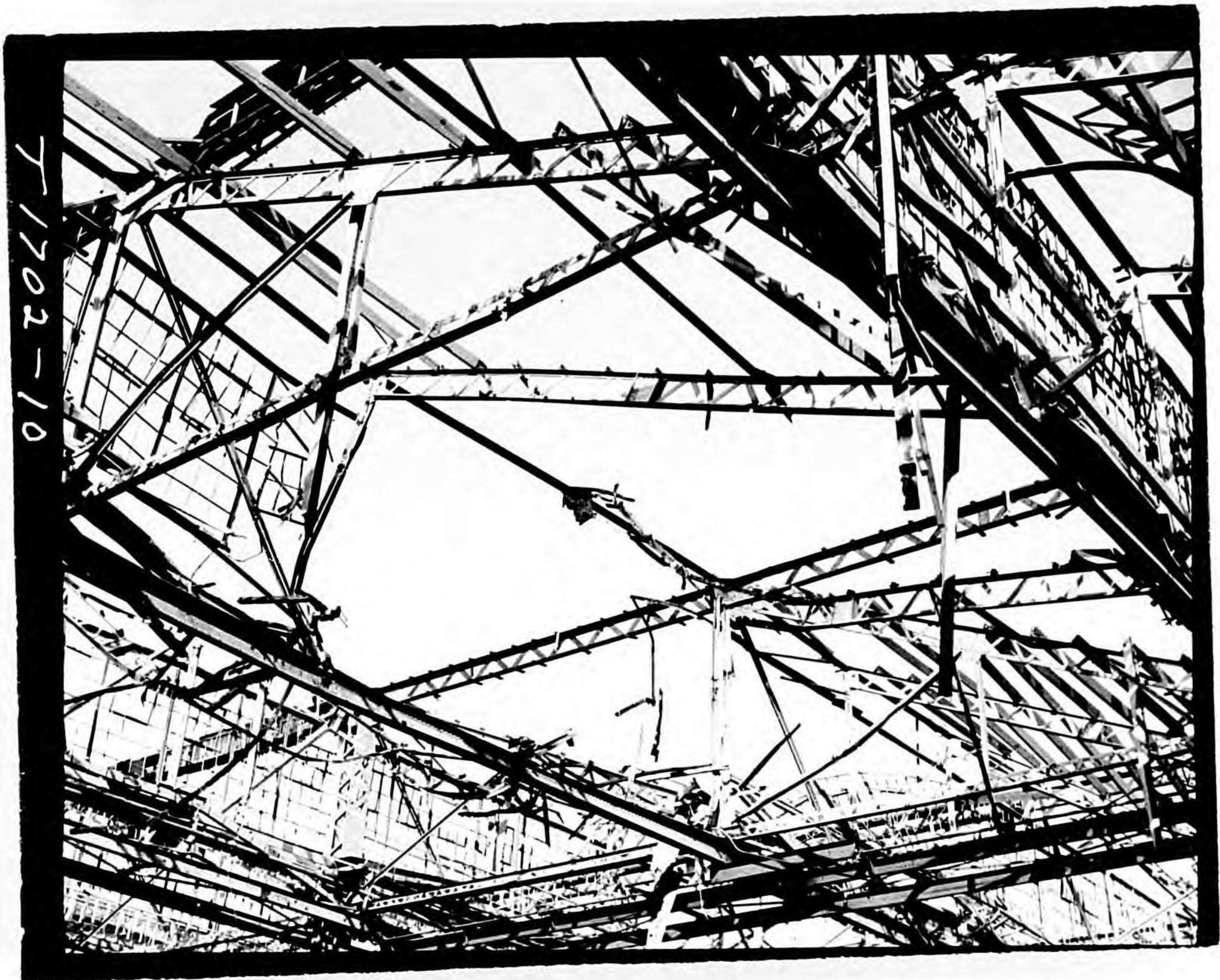
T-1702

Prints + Neg

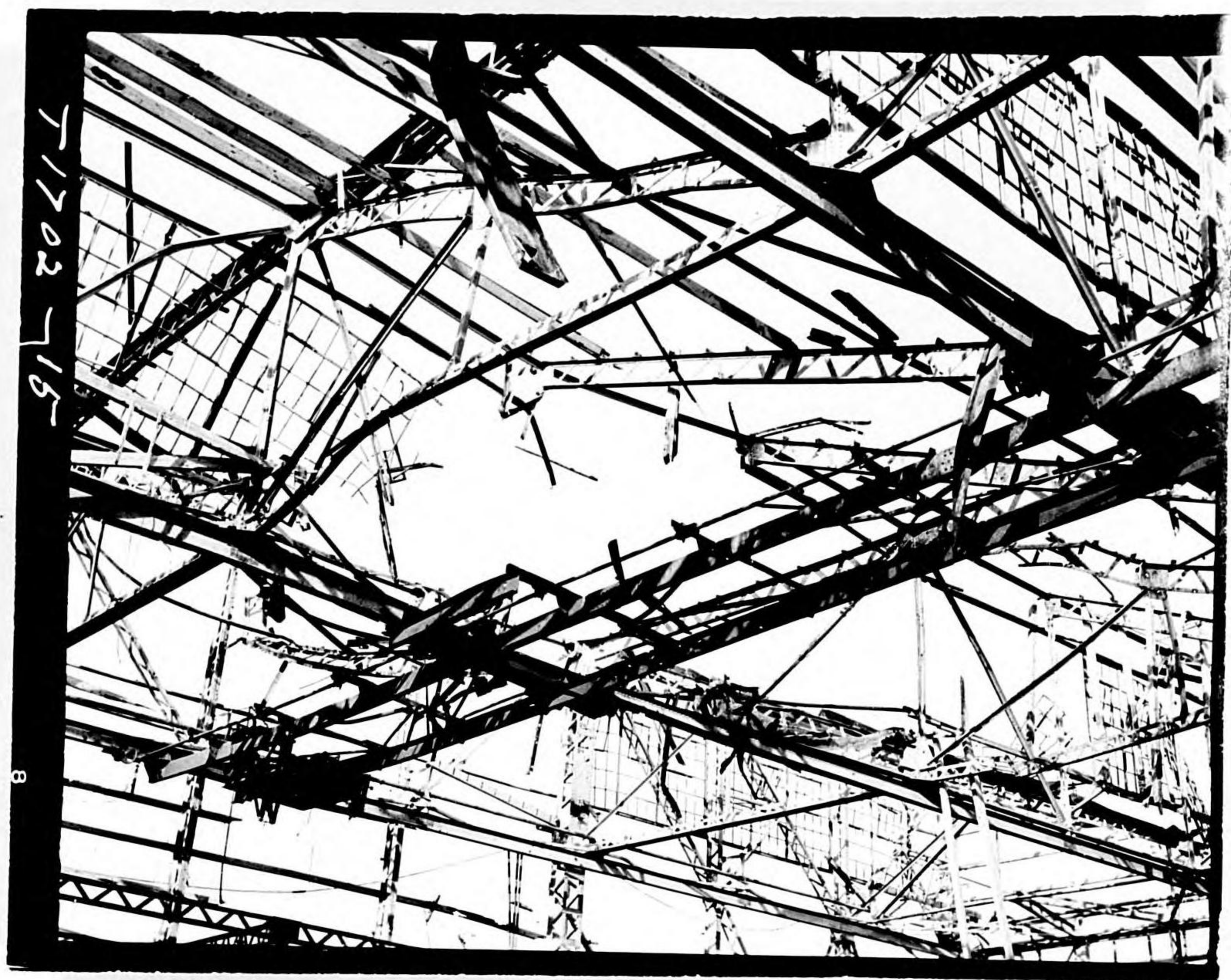












U. S. STRATEGIC BOMBING SURVEY  
PHYSICAL DAMAGE DIVISION TEAM NO. 3

TARGET NO. 90.25 - 1702

PHOTO	BLDG. NO.	PHOTO NOTES BOMB NO.
1	2	8
2	2	7
3	2	6
4	2	9
5	2	4
6	1	1,2
7	1	2
8	1	1
9	3	10
10	3	12
11	3	15?
12	3	17
13	3	17
14	3	28
15	3	22



959 Doc (4)

Photo Titles -1702

Photo no		Title
1.	7	Bldg 2, Bomb 8; Damage to Roof Steel
2	6	Bldg 2, Bomb 7; Damage to Roof Steel
3.	5	Bldg 2, Bomb 6; Damage to Roof Steel; Bent Hoist Runway
4	8	Bldg 2, Bomb 9 Damage to Roof Steel
5	4	Bldg 2, Bomb 4 Damage to Roof Steel
6	1	Bldg 1, Bombs 1 & 2 Damaged Exterior Column, Roof Steel
7	3	Bldg 1, Bomb 2 Damaged Roof Steel
8.	2	Bldg 1, Bomb 1 Col. cut, lower chord of ext. stiffening truss cut.
9.	9	Bldg 3, Bomb 10 Ext. Col. cut; Roof Steel damaged
10	10	Bldg 3, Bomb 12 Roof Steel Damaged; Horizontal members intact (Image reversed)
11.	11	Bldg 3, Bomb 15 Damaged Roof steel; Bent Crane runway
12.	12	Bldg 3, Bomb 17 Col. destroyed, view of damage & debris
13	13	Bldg 3, Bomb 17 Detail of destroyed Col.
14	15	Bldg 3, Bomb 28 Roof Damage, Heavy Members Intact
15.	14	Bldg 3 Bomb 22 Bomb hit above crane, Roof dam- age, crane not knocked down



# 1702 Photo

	OLD	NEW	
	1	7	✓
	2	6	✓
	3	5	✓
	4	8	✓
	5	4	✓
	6	1	✓
	7	3	✓
	8	2	✓
	9	9	✓
	10	10	✓
	11	11	✓
	12	12	✓
	13	13	✓
	14	15	✓
	15	14	
#			
2			
3			
4			
5			
6			
7			
8			
9			
10			
11			
12			
13			
14			
15			