

## Historic, archived document

Do not assume content reflects current scientific knowledge, policies, or practices.



# Let's All Dig In For **VICTORY**

GROW ANOTHER CROP THIS FALL



LIBRARY

SEP 17 1943

AUG 17 1943 ★

U. S. Department of Agriculture

Plant "*The South's Best*" — **STECKLER SEEDS**

*Summer and Fall Catalog, 1943*

## **STECKLER SEED CO.**

INCORPORATED

512 Gravier St.

NEW ORLEANS 3, LA.

# *Dig in Your Garden or Dig "Fox Holes"*

Which would YOU rather do?—So would the BOYS over there, but they have no choice—it's "Fox Holes" for them.

Let's back them up by raising all the vegetables we can for use fresh and pack the surplus in glass. Let's save the commercial packs in tins for our boys at the fronts, and for our hungry Allies.

**For certain results plant "The South's Best"  
—STECKLER SEEDS. Send your order TODAY!**

## **SATISFACTION GUARANTEED** *...or Your Money Refunded*

All seeds listed in this catalog are sold subject to meeting YOUR APPROVAL on arrival. You have the privilege of examining them and if you do not find them exactly as represented you are not obligated to keep them. You MUST be absolutely satisfied, or you may return the seed, and we will refund every cent of your money including the freight.

We cannot guarantee a crop. Success with the crop is contingent on numerous conditions over which we have no control. With respect to this point, all our seeds are sold according to the standard non-warranty of the American Seed Trade, as follows: "Steckler's Seed Company gives no warranty, express or implied, as to description, quality, productiveness, or any other matter of any seeds, bulbs, or plants it sells, and will not be responsible for the crop." If the goods are not accepted on these terms, they are to be returned at once.

### **ALL PRICES SUBJECT TO CHANGE WITHOUT NOTICE**

THE POSTAGE TO FOREIGN COUNTRIES must be added to the cost of the goods selected in this price list, or the order will be reduced to allow for the postage. These rules will also apply to orders from the United States where no postage allowance is made for mailing, or we will send by express.

### **PLEASE TAKE NOTE OF NEW FOREIGN PARCEL POST RATES**

**BRITISH HONDURAS, CUBA, NICARAGUA**—Postage rate 14c lb. Limit weight 22 lbs.

**HAITI**—Postage rate 21c lb. Limit 44 lbs.

**UNION OF SOUTH AFRICA**—Postage rate 14c lb. Limit weight 11 lbs.

**ARGENTINA, COSTA RICA, REP. OF HONDURAS**—Postage rate 14c lb. Limit weight 22 lbs.

**BOLIVIA**—Postage rate 44c for first pound, 14c for each additional pound or fraction thereof. Limit weight 11 lbs.

**DOMINICAN REPUBLIC**—Postage rate 22c for first pound, 14c for each additional pound or fraction thereof. Limit weight 44 lbs.

**MEXICO**—Postage rate 71c per lb. Limit weight 44 lbs.

**EL SALVADOR**—Postage rate 71c. Limit weight 44 lbs.

**PANAMA**—Postage rate 39c for first pound, 14c for each additional pound or fraction thereof. Limit weight 50 lbs.

**CANAL ZONE**—Postage rate 14c lb. Limit weight 50 lbs.

**GUATEMALA**—Postage rate 55c for first pound, 14c for each additional pound or fraction thereof. Limit weight 44 lbs.

**VENEZUELA**—Postage rate 57c for first pound, 16c for each additional pound. Limit weight 11 lbs.

**BRAZIL**—Postage rate 47c for first pound, 14c for each additional pound. Limit weight 22 lbs.

**ECUADOR**—Postage rate 55c for first pound, 14c for each additional pound. Limit weight 44 lbs.

**COLOMBIA**—Postage rate 47c for first pound, 14c for each additional pound or fraction thereof. Limit weight 44 lbs.

**PERU**—Postage rate 55c for first pound, 14c for each additional pound or fraction thereof. Limit weight 22 lbs.



# Steckler Seed Co.

INCORPORATED

**Seed Growers—Seed Merchants**

**New Orleans, La.**



## ORDER BLANK

Date..... 194....

For the enclosed \$.....please send  
the following order.

Name.....

Street Address..... Box Number..... Rural Route.....

Post Office..... State.....

Express Office..... Freight Office.....

All gardeners of experience know that success with seed depends largely upon weather conditions and proper cultivation, so in accordance with the universal custom of the Seed Trade, STECKLER SEED CO., Inc., give no warranty, express or implied, as to description, quality, productiveness, or any other matter of any Seeds, Bulbs, Plants they send out, and they will not be in any way responsible for the crop.

### IMPORTANT!

List Remittance Here

Dollars Cents

Draft or Check		
Money Order .....		
Cash .....		
Postage Stamps (Send 3c Stamps)		
Total Amount .....		

When goods are wanted C. O. D. 25% of the amount due must accompany the order. No Plants are sent C. O. D.  
**NOTE:** If cash or stamps are sent by mail REGISTER THE LETTER.

QUANTITY	NAME OF VARIETY	AMOUNT	
	CUSTOMERS LIVING IN LOUISIANA PLEASE INCLUDE 1% SALES TAX WHEN REMITTING		
	(OVER)	TOTAL	

# BETTER SEED MEANS BETTER GARDENS



# Stringless beans are best for "Snaps"

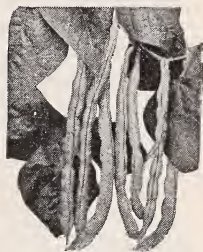
## STECKLER'S GARDEN BEANS

Culture. Plant up to Sept. 20th. Sow 1½ to 2 inches deep, 3 to 4 inches apart, in rows 2½ to 3 feet apart. Cultivate often until plants bloom. Picking often insures longer bearing. Two pounds will plant 100 feet of row, 80 lbs. (bushel) to the acre.

### DWARF OR BUSH GREEN PODDED

Height of bush 15 to 25 inches. All varieties marketed as green beans except Red Kidney which are left to mature.

	Postpaid		Not Prepaid	
	Lb.	5 lbs.	15 lbs.	60 lbs.
(10c packets)			Peck	Bu.
Black Valentine .....	\$.40	\$1.70	\$3.65	\$12.00
Burpee Stringless .....	.50	2.25	4.75	18.00
Giant Stringless .....	.50	2.25	4.75	18.00
Bountiful .....	.50	2.25	4.75	18.00
Asgrow Black Valentine Stringless .....	.40	1.70	3.70	12.75
Tendergreen .....	.50	2.25	4.75	18.00



Bountiful

### BEANS FOR DRYING

	Postpaid		Not Prepaid	
	Lb.	5 lbs.	15 lbs.	60 lbs.
(10c packets)			Peck	Bu.
White Kidney .....	\$.40	\$1.70	\$3.65	\$12.00
Red Kidney .....	.40	1.70	3.65	12.00
White Navy .....	.40	1.70	3.65	12.00



Giant Stringless

### BUSH WAX BEANS

	Postpaid		Not Prepaid	
	Lb.	5 lbs.	15 lbs.	60 lbs.
(10c packets)			Peck	Bu.
Curries Rust Proof .....	\$.40	\$1.70	\$3.65	\$12.00
Davis White Kidney Wax (Stgls.) .....	.40	1.70	3.65	12.00
Pencil Pod Wax .....	.50	2.10	4.10	14.40
Surecrop Wax .....	.50	2.10	4.10	14.40
Improved Golden Wax .....	.50	2.10	4.10	14.40



Surecrop Wax

### BUSH LIMA BEANS

	Postpaid		Not Prepaid	
	Lb.	5 lbs.	15 lbs.	60 lbs.
(10c packets)			Peck	Bu.
Fordhook .....	\$.50	\$2.10	\$4.25	\$15.00
Henderson .....	.40	1.75	3.75	13.00
New Calico Bush Butter or Jackson Wonder .....	.50	2.10	4.10	14.40
Burpee Imp. Bush .....	.50	2.10	4.25	15.00
Baby Fordhook .....	Sold Out			



Henderson Bush Lima

### SNAP BEANS—POLE OR RUNNING

	Postpaid		Not Prepaid	
	Lb.	5 lbs.	15 lbs.	60 lbs.
(10c packets)			Peck	Bu.
Black Valentine .....	\$.40	\$1.70	\$3.70	\$12.30
Imp. Ky. Wonder or Old Homestead .....	.50	2.10	4.50	15.40
Striped Creaseback .....	.50	2.10	3.90	13.40
White Cornfield .....	.50	2.10	3.90	13.40
White Creaseback .....	.50	2.10	3.90	13.40
Yard Long .....	.65			
Ideal Market .....	.40	1.70	3.70	12.30
McCaslan .....	.50	2.10	3.90	13.40

### POLE LIMA BEANS

	Postpaid		Not Prepaid	
	Lb.	5 lbs.	15 lbs.	60 lbs.
(10c packets)			Peck	Bu.
Carolina or Sewee .....	\$.50	\$2.10	\$4.00	\$14.00
Southern Willow Leaved Butter .....	.50	2.25	4.75	16.20
Spotted Butter or Florida Pole .....	.50	2.10	4.25	15.00
Large White Lima .....	.50	2.10	4.25	15.00

### WINDSOR BEANS

English—Long variety. Edible condition 75 days. Plant two beans every 6 inches and 2½ feet between rows. Strong upright grower and withstands low temperature. Planted during October and November. Ready to pick during April and May. English—Pkt. 10c; lb. 45c; 5 lbs. \$1.80, postpaid. Not prepaid, 10 lbs. \$2.50; 100 lbs. \$23.00.

## NITRAGIN

**BEANS**  
String, Wax, Kidney  
½ bu. ea. .... \$ .25  
1 bu. ea. .... .35  
1½ bu. ea. .... .50

**GARDEN SIZE**  
Garden Peas and  
Beans, Sweet Peas  
and Lupines  
Enough for 6 lbs.  
seed. Retail Price  
10c each.

Write for Prices in Quantity Lots—State Quantity Wanted



# Pure-bred Cabbage



Detroit Dark Red

## STECKLER'S GARDEN BEETS

Culture. Planted from July to October. Rows 18 to 24 inches apart. Rich sandy loam is preferable, but well fertilized soil will produce fine beets. One ounce to 50 feet of row, 5 to 6 pounds per acre.

(10c packets)	Oz.	Postpaid		
		¼ lb.	Lb.	5 lbs.
Chicago Early Blood Turnip.....	\$.25	\$.65	\$2.00	\$9.50
Crosby Early Egyptian .....	.20	.65	1.85	8.00
Detroit Dark Red .....	.25	.65	2.00	9.50
Early Wonder .....	.25	.65	1.85	8.00
Fireball .....	.25	.65	1.85	8.00
Eclipse .....	.25	.65	1.85	8.00
Swiss Chard .....	.20	.50	1.50	7.25



Crosby's Egyptian

## STECKLER'S STOCK BEETS

(10c packets)	Oz.	Postpaid		
		¼ lb.	Lb.	5 lbs.
Long Red Mangel .....	\$.15	\$.45	\$1.65	\$7.50
Klein Wanzleben .....	Sold Out			

## STECKLER'S BROCCOLI

(10c packets)	Oz.	Postpaid		
		¼ lb.	Lb.	5 lbs.
Italian Green Sprouting Calabrese	\$.40	\$1.25	\$4.00	

## STECKLER'S CABBAGE

Culture. Plantings begin in July and continued all through the fall months for a winter crop. When plants are 4 to 6 inches high transplant. Set the early varieties 18 inches apart in rows 2½ to 3 feet apart and the late varieties 2 feet apart in 3½ to 4 foot rows. 1 ounce of seed will produce 1500 plants; ½ pound to the acre.



Copenhagen Market

(10c packets)	Oz.	Postpaid		
		¼ lb.	Lb.	5 lbs.
All Head Early .....	\$.50	\$1.75	\$6.00	\$29.00
Chinese PeTasi Imported .....	.35	.90	3.00	14.00
Copenhagen Market .....	.65	2.20	7.50	36.50
Superior Large Late Flat Dutch....	.55	1.85	6.50	31.20
Early Drumhead Savoy .....	.60	2.00	7.00	
Danish Ballhead Short Stem.....	.60	2.00	7.00	
Mammoth Red Rock .....	.55	1.75	6.00	29.00
Select Early Jersey Wakefield.....	.50	1.55	5.25	25.25
Golden Acre .....	.65	2.20	7.50	36.50
Special Chas. Wakefield .....	.50	1.60	5.50	26.50
Special Succession .....	.55	1.75	6.00	29.00
Stein's Early Flat Dutch.....	.50	1.60	5.50	26.50
Surehead .....	.50	1.60	5.50	26.50
Glory of Enkhuizen.....	.65	2.20	7.50	36.50
Wis. All Season (Yellow Resistant) .65	2.20	7.50	36.50	
Marion Market (Resistant Copen.) .65	2.20	7.50	36.50	
Original Louisiana Copenhagen.....	Sold Out			
Wis. Hollander No. 8.....	.65	2.20	7.50	36.50



Steins Early Flat Dutch



Early Jersey Wakefield

## FROSTPROOF CABBAGE PLANTS

These are strong, open field-grown plants. We ship millions of these frostproof plants direct from our growing stations year after year to satisfied and loyal customers. If you have not tried them, plan to do so this year.

Be sure to mention shipping date on your order. We will ship as near that date as weather at growing station permits. Shipments start about November 1. No order filled for less than 100 plants of the same variety.

Varieties: Charleston Wakefield, Copenhagen Market, Stein's Early Flat Dutch.

Postpaid Prices		
100 plants.....	75c	500 plants.....\$2.50
		1,000 plants.....\$4.00

Write for quantity delivered prices.

## STECKLER'S COLLARDS

Culture. Planted during July to September. An old standby for the South. One ounce will sow 200 feet of row; 6 ounces per acre.

(10c packets)	Oz.	Postpaid		
		¼ lb.	Lb.	5 lbs.
Georgia or Southern .....	\$.15	\$.35	\$.85	
Cabbage Collards .....	.15	.35	.85	
Louisiana Sweet .....	.20	.40	1.00	



Wisconsin All Season

Write for Prices in Quantity Lots—State Quantity Wanted



# is one of our Specialties

## STECKLER'S BRUSSELS SPROUTS

Culture. Planted July to September. 5 ounces per acre.

(25c packets)	Oz.	¼ lb.	Lb.	5 lbs.
Brussels Sprouts	.....\$1.85			

## STECKLER'S CARROTS

Culture. Plant during July, August and September. Ground should be well broken, prepared and rich to allow the plant to penetrate. One ounce will sow 100 feet of row, 3 to 4 pounds per acre.

(10c packets)	Oz.	¼ lb.	Lb.	5 lbs.
Danvers	.....\$ .40	\$1.20	\$3.75	\$18.25
Early Half Long Chantenay	..... .40	1.35	3.90	18.50
Imp. Long Orange	..... .40	1.20	3.75	18.25
Large White Belgian	..... .20	.60	1.75	7.50
Oxheart or Guerande	..... .50	1.40	4.00	19.20
Imperator	..... .50	1.40	4.00	19.20

## STECKLER'S CRESS

(20c packets)	Oz.	¼ lb.	Lb.	5 lbs.
Broad Leaved	.....\$ .35	\$.85	\$3.00	
Water Cress	..... 1.10	3.00	10.00	

## STECKLER'S EGG PLANTS

Planted June to August.

(10c packets)	Oz.	¼ lb.	Lb.	5 lbs.
Black Beauty	.....\$ .50	\$1.35	\$4.25	\$20.50
Large Purple or N. O. Market	..... .50	1.45	4.75	22.80
Imp. New York Spineless	..... .50	1.35	4.25	20.50
Florida High Bush	..... .50	1.45	4.75	22.80

## STECKLER'S CARDOON

(10c packets)	Oz.	¼ lb.	Lb.	5 lbs.
Cardoon	.....\$ .55	\$1.60	\$5.50	

## STECKLER'S CHICORY

(20c packets)	Oz.	¼ lb.	Lb.	5 lbs.
Chicory or Witloof	.....\$ .55	\$1.75	\$6.00	

## STECKLER'S ENDIVE

Planted September and October.

(10c packets)	Oz.	¼ lb.	Lb.	5 lbs.
Italian Ribbed (Panaclier)	.....\$ .20	\$.40	\$1.25	\$5.50
Full Heart Batavian	..... .20	.40	1.25	5.50

## STECKLER'S CUCUMBERS

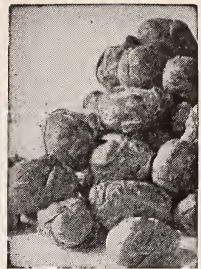
Planted July to August.

(10c packets)	Oz.	¼ lb.	Lb.	5 lbs.
Davis Perfect	.....\$ .25	\$.65	\$2.00	\$9.00
Early Fortune	..... .25	.65	2.00	9.00
Improved Early White Spine	..... .25	.65	2.00	9.00
Japanese Climbing	..... .20	.60	1.75	
Steckler's Imp. Long Green	..... .30	.75	2.50	12.00
West India Gherkin	..... .30	.70	2.25	10.70
Staysgreen	..... .25	.65	2.00	9.00
Snow or Heinz Pickling	..... .25	.65	2.00	9.00
Clark's Special	..... .25	.65	2.00	9.00
Straight Eight	..... .30	.75	2.50	12.00
A & C	..... .30	.75	2.50	12.00

## STECKLER'S CAULIFLOWER

Culture. Planted July, August and September. Requires rich soil and an abundance of moisture. Cultivated same as cabbage. Heads must be protected from sun to get the white head. One ounce will produce 2000 plants; ½ pound per acre.

(25c packets)	Oz.	¼ lb.	Lb.	5 lbs.
Early Italian Giant	.....	Sold Out		
Late Italian Giant	.....	Sold Out		
Large Algiers	.....	Sold Out		
Extra Early Snowball	.....\$3.00	\$10.00	\$35.00	



Brussels Sprouts



Danver's



Black Beauty



Steckler's Improved Long Green

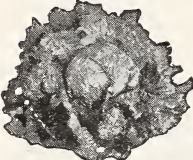


Snowball Cauliflower

Descriptive Catalog on Request.



Giant Pascal



Iceberg Lettuce



Big Boston Lettuce



Chinese Mustard



London Flag Leek

# Plant Plenty of Vegetables

## STECKLER'S CORN SALAD

Culture. Planted during August and September. A hardy winter salad. 2 ounces will plant 100 feet of drill.

			Postpaid	
(25c packets)	Oz.	¼ lb.	Lb.	5 lbs.
Corn Salad .....	\$.60	\$1.90	\$6.50	

## STECKLER'S CELERY

Planted June to September.

			Postpaid	
(10c packets)	Oz.	¼ lb.	Lb.	5 lbs.
Celeriac, Turnip Rooted .....	\$.45	\$1.50	\$5.00	
Giant Pascal .....	.45	1.50	5.00	
Golden Self Blanching .....	.70	2.25	8.00	
Golden Plume .....	.65	2.00	7.00	
White Plume .....	.45	1.50	5.00	

## STECKLER'S CHERVIL

Planted October and November.

			Postpaid	
(10c packets)	Oz.	¼ lb.	Lb.	5 lbs.
Chervil .....	Sold Out			

## STECKLER'S FENNEL

Planted October and November.

			Postpaid	
(10c packets)	Oz.	¼ lb.	Lb.	5 lbs.
Florence Fennel .....	\$.25	\$.60	\$1.75	

## STECKLER'S KALE OR BORECOLE

Planted August and September.

			Postpaid	
(10c packets)	Oz.	¼ lb.	Lb.	5 lbs.
Dwarf Siberian .....	\$.20	\$.50	\$1.50	

## STECKLER'S KOHLRABI

Planted August and September.

			Postpaid	
(10c packets)	Oz.	¼ lb.	Lb.	5 lbs.
Early White Vienna .....	\$.60	\$1.75	\$6.00	

## STECKLER'S LEEK

Planted October and November.

			Postpaid	
(20c packets)	Oz.	¼ lb.	Lb.	5 lbs.
Large London Flag .....	\$1.00	\$3.00	\$10.00	
Giant Musselburgh .....	1.00	3.00	10.00	

## STECKLER'S LETTUCE

Culture. Planted from September throughout the fall. Requires rich soil, plenty of moisture. When leaves are 2 to 3 inches long, transplant in rows 15 to 18 inches apart and 8 to 10 inches apart in the row. One ounce will sow 150 feet, 2 to 3 pounds per acre.

			Postpaid	
(5c packets)	Oz.	¼ lb.	Lb.	5 lbs.
Grand Rapids .....	\$.25	\$.65	\$2.00	\$ 9.50
Improved Iceberg .....	.25	.70	2.25	10.75
Imp. Royal Cabbage .....	.25	.65	2.00	9.50
Large Salamander .....	.25	.65	2.00	9.50
Paris White Cos .....	.25	.65	2.00	9.50
New York or Wonderful Cabbage.....	.30	.80	2.75	
Sel. Big Boston.....	.25	.65	2.00	9.50
Chicken .....	.25	.65	2.00	9.50
White Boston .....	.25	.65	2.00	9.50
Florida Iceberg .....	.35	.90	3.00	

## STECKLER'S MUSTARD

Planted September to December.

			Postpaid	
(10c packets)	Oz.	¼ lb.	Lb.	5 lbs.
Chinese Large Cabbage Leaved.....	\$.25	\$.65	\$2.00	
Southern Curled .....	.20	.40	1.25	
Florida Broad Leaf.....	.25	.60	1.75	
Tendergreen .....	.20	.50	1.50	

## STECKLER'S OKRA

Planted July and August.

			Postpaid	
(5c packets)	Oz.	¼ lb.	Lb.	5 lbs.
Dwarf Green Prolific .....	Sold Out			
French Market Dwarf Prolific.....	\$.10	\$.25	\$.60	\$2.25
Tall Growing .....	.10	.25	.60	2.25
White Velvet .....	.10	.25	.60	2.25

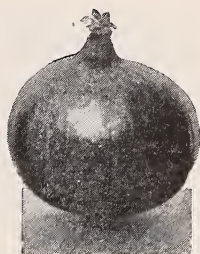
Write for Prices in Quantity Lots—State Quantity Wanted



# To Eat Fresh and to Can

## STECKLER'S ONIONS

	Oz.	Postpaid		5 lbs.
		¼ lb.	1 lb.	
(10c packets)				
Crystal Wax Bermuda .....	\$.75	\$2.00	\$7.00	
Yellow Bermuda .....	.75	2.00	7.00	
Danvers Yellow Globe .....	.60	1.75	6.00	
Red Creole .....	.45	1.25	4.50	
Red Wethersfield .....	.60	1.75	6.00	
Yellow Prizetaker .....	.75	2.25	8.00	
Riverside Sweet Spanish Yellow....	.75	2.10	7.50	
White Silverskin .....	.75	2.25	8.00	

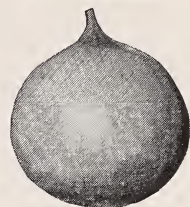


Red Wethersfield

## BERMUDA ONION PLANTS

Sturdy, healthy plants ready to ship about November 1st. Grow onions this easy way. You can get a much earlier crop of fully matured onions, or early green onions. Yellow Bermuda and Crystal Wax only.

Express Collect prices—6000 plants, (1 crate) \$7.00. NO PLANTS SHIPPED C.O.D.



Riverside Sweet Spanish

## STECKLER'S ONION SETS

		Postpaid	
		Lb.	3 lbs.
Red Wethersfield .....	\$.35	\$ .85	
White Silverskin .....	.35	.85	
Yellow Danvers .....	.35	.85	

Write for prices on larger quantities.

## STECKLER'S PARSLEY

Planted August to October.

	Oz.	Postpaid		
		¼ lb.	Lb.	5 lbs.
(5c packets)				
Hamburg Curled .....	\$.15	\$.40	\$1.10	\$5.00
Double Curled .....	.15	.40	1.10	5.00
Plain Leaved .....	.15	.40	1.10	5.00



Little Marvel

## STECKLER'S PARSNIPS

Planted September to November.

	Oz.	Postpaid		5 lbs.
		¼ lb.	Lb.	
(10c packets)				
Hollow Crown or Sugar.....	\$.20	\$.35	\$1.75	

## STECKLER'S GARDEN PEAS

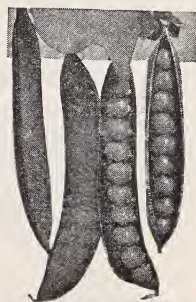
Culture. Planted from August to December. Sow in double rows and the vines will support each other. Rows should be 2½ to 4 feet apart, and seed planted 1½ to 2 inches deep, 6 to 8 inches apart. One pound will plant 50 feet of row: 1½ bu. per acre.

### Wrinkled Varieties

	Lb.	Postpaid		Not prepaid	
		5 lbs.	Peck	Bu.	Bu.
(10c packets)					
American Wonder .....	.35	\$1.45	\$3.30	\$2.50	
Carter's Imp. Telephone.....	.35	1.45	3.30	12.50	
Gradus or Prosperity.....	.35	1.45	3.30	12.50	
Thos. Laxton .....	.45	2.00	4.00	15.50	
Little Marvel .....	.45	2.00	4.00	15.50	
Laxtonian .....	.40	1.75	3.90	14.85	
Laxton Progress .....	.40	1.75	3.90	14.85	

### Smooth Varieties

Early Alaska .....	\$.40	\$1.50	\$3.40	\$12.85	
Early Washington .....	.40	1.50	3.40	12.85	
Extra Early First and Best.....	.40	1.50	3.40	12.85	
Melting Sugar Dwarf .....	.40	1.50	3.40	12.85	
Large White Marrowfat .....	.40	1.50	3.10	11.25	
Mammoth Pod Extra Early.....	.40	1.50	3.40	12.85	
Creole .....	.40	1.50	3.40	12.85	

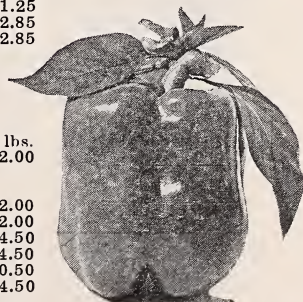


Carter's Improved Telephone

## STECKLER'S PEPPERS

Planted July and August.

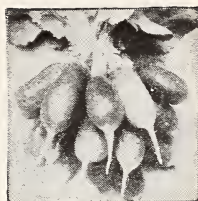
	Oz.	Postpaid		
		¼ lb.	Lb.	5 lbs.
(10c packets)				
Chinese Giant .....	\$.40	\$1.30	\$4.50	\$22.00
Steckler's Tobacco (hot) .....	.40	1.30	4.50	
Long Red Cayenne (hot) .....	Sold Out			
Ruby Giant .....	.30	.75	2.50	12.00
Royal King .....	.30	.75	2.50	12.00
World Beater .....	.35	1.00	3.00	14.50
Ruby Giant .....	.35	1.00	3.00	14.50
California Wonder .....	.40	1.25	4.25	20.50
Perfection .....	.35	1.00	3.00	14.50



California Wonder

Descriptive Catalog on Request





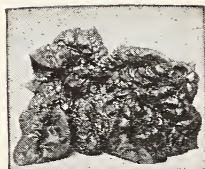
French Breakfast



Crimson Giant



Salsify



Flanders Spinach



Zucchini

# Spinach and Squash

## STECKLER'S RADISHES

Plant in August and September.

(5c packets)	Oz.	Postpaid		
		¼ lb.	Lb.	5 lbs.
Brightest Scarlet or Three Quarter Long .....	.15	\$.30	\$.90	\$4.25
Chinese Rose .....	.15	.30	.90	4.25
Cooper's Sparkler White Tip.....	.15	.30	.90	4.25
Crimson Giant Turnip .....	.15	.30	.90	4.25
Early Deep Scarlet Turnip.....	.15	.30	.90	4.25
Early Long Scarlet Short Top Imp. ....	.15	.30	.90	4.25
French Breakfast .....	.15	.30	.90	4.25
White Icicle .....	.15	.30	.90	4.25
Scarlet Half Long French.....	.15	.30	.90	4.25
Long Black Spanish .....	.15	.30	.90	4.25
Cincinnati Market .....	.15	.30	.90	4.25

## STECKLER'S ROQUETTE OR ROCKET SALAD

(10c packets)	Oz.	Postpaid		
		¼ lb.	Lb.	5 lbs.
Roquette .....	.35	\$1.00	\$3.50	

## STECKLER'S WHITE SHALLOTS

Planted August to March. For home consumption and North-ern markets. About 6 bushels per acre in 4-foot rows.

The quantity to be expected from an acre, if planted in field culture, 4-foot rows, would be from 50 to 60 barrels, but if planted, as is done near New Orleans, in 2-foot rows, 100 to 125 barrels, if planted in August and September. If planted later, they do not multiply so well.

	Postpaid		Not Prepaid	
	1 lb.	3 lbs.	10 lbs.	25 lbs.
White Shallots .....	\$.35	\$.85		

Write for prices on larger quantities

## STECKLER'S SALSIFY OR OYSTER PLANT

Planted July to November.

(10c packets)	Oz.	¼ lb.	Lb.
Sandwich Island .....	\$.50	\$1.40	\$4.50

## STECKLER'S SPINACH

Culture. Planted from September to March in rows 16 to 20 inches apart, covering seed one inch deep. When leaves are 1 inch wide, thin to 6 to 8 inches apart in the row. Requires rich soil and cool weather. One ounce will sow 100 feet of row; 8 to 10 pounds per acre.

(5c packets)	Oz.	Postpaid			Not Prepaid		
		¼ lb.	5 lbs.	10 lbs.	25 lbs.	100 lbs.	
Broad Leaved .....	\$1.10	\$.30	\$.85	\$4.00	\$7.00	\$16.00	\$58.00
Flanders .....							
New Zealand .....							
Nobel Giant Leaved ..	.10	.30	.85	4.00	7.00	16.00	58.00
Bloomdale Savoy ..	.10	.30	.85	4.00	7.00	16.00	58.00
Old Dominion .....	.10	.30	.85	4.00	7.00	16.00	58.00
Viroflay .....	.10	.30	.85	4.00	7.00	16.00	58.00

## STECKLER'S SORREL

Planted September to December.

(10c packets)	Oz.	¼ lb.	Lb.
Broad Leaved .....	\$.45	\$1.60	\$5.25

## STECKLER'S SQUASH

Planted August to November.

(5c packets)	Oz.	Postpaid		
		¼ lb.	Lb.	5 lbs.
Early White Bush or Patty Pan....	.15	\$.40	\$1.15	\$5.25
Long Yellow or Summer Crookneck ..	.15	.45	1.25	5.50
Cocozelle or Italian Green Striped ..	.15	.45	1.25	5.50
Zucchini .....	.15	.45	1.25	5.50
Giant Summer Straight Neck.....	.15	.45	1.25	5.50
Table Queen .....	.20	.50	1.35	6.00

## NOTICE

If you are a large truck grower, shipper of vegetables, plantation owner, write us giving a list of your requirements. We will quote you our lowest quantity prices, with no obligation to buy. Write today and save money on quality seed.

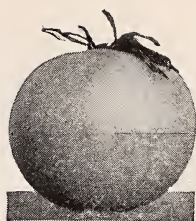
Write for quantity prices.

# Are High in Vitamins

## STECKLER'S TOMATOES

Culture. Planted during July and August. Soil should be well broken and fertilized. Rows should be 4 to 5 feet apart and the plants set about 3 feet apart in the row or 2 feet if staked. One ounce will produce 1500 plants, 4 to 6 ounces will furnish sufficient plants for an acre.

(10c packets)	Oz.	Postpaid		
		¼ lbs.	Lb.	5 lbs.
Louisiana Red .....	\$.45	\$1.45	\$5.00	\$23.00
Early Detroit .....	.35	1.10	3.75	16.25
Greater Baltimore .....	.30	.95	3.25	15.00
Gulf States Market .....	.30	1.00	3.50	15.50
June Pink .....	.30	1.00	3.50	15.50
Livingston Globe .....	.30	1.00	3.50	15.50
Norton Wilt Resistant .....	.30	.90	2.90	13.80
Ponderosa Crimson .....	.45	1.45	5.00	
Red Rock .....	.25	.75	2.50	12.00
Spark's Earliana .....	.40	1.25	4.00	19.20
New Stone .....	.25	.65	2.25	
Marglobe .....	.40	1.30	4.00	19.20
Louisiana Pink .....	.40	1.40	4.50	
Red Oxheart .....	.50	1.75	7.50	
Break O' Day .....	.40	1.40	4.50	
New Pritchard .....	.40	1.30	4.25	
Brimmer .....	.50	1.70	5.75	
Louisiana Gulf States .....	.50	1.50	5.50	25.00
Louisiana Dixie .....	.50	1.50	5.50	25.00
Rutgers .....	.40	1.30	4.00	19.20
Dwarf Champion .....	.40	1.30	4.00	19.20



Louisiana Pink



Oxheart



Marglobe



Early Purple Top Strap-leaved



Amber Globe Turnip

## STECKLER'S TURNIPS

Culture. Sow from July to October for fall and winter, in rows 18 inches apart. Plants should be thinned to 4 to 5 inches apart. Can also be sown broadcast. One ounce will sow 200 feet of row; 2 pounds per acre, or if broadcast 4 to 5 pounds per acre.

(5c packets)	Oz.	¼ lb.	Lb.	5 lbs.
Amber Globe .....	\$.15	\$.40	\$1.25	\$5.75
Early Purple Top Strap Leaf .....	.15	.40	1.25	5.75
Extra Early Purple Top Milan .....	.20	.50	1.50	
Extra Early White Egg .....	.15	.40	1.25	5.75
Imp. Purple Top Rutabaga .....	.25	.60	1.75	8.25
Victory Neckless Rutabaga .....	.25	.60	1.75	8.25
Long Cow Horn .....	.15	.40	1.25	5.75
Purple Top White Globe .....	.20	.50	1.50	7.00
Purple Top Yellow Aberdeen .....	.20	.50	1.50	7.00
Seven Top .....	.10	.30	.60	2.75
Japanese (Shogoin) .....	.25	.60	1.75	8.25
Early White Flat Dutch .....	.20	.45	1.35	6.25

**An excellent assortment of early, medium and late turnips**

1. Extra Early White Egg.
2. Purple Top Strap Leaf.
3. Purple Top Rutabaga.
4. Purple Top Globe.
5. Early White Flat Dutch.
6. Japanese Shogoin.
7. Seven Top.

**7 Varieties—one ounce each \$1.05**

## PRESERVING MASON JARS

Ball's round, clear crystal glass jars, finest for home canning.

	Doz.
1 Pint .....	\$1.00
1 Quart .....	1.10
½ Gal. ....	1.40

F.O.B. New Orleans

DESCRIPTIVE CATALOGUE ON REQUEST.

# SUMMER AND FALL PLANTING GUIDE

(Based on the needs of)

Vegetable	Amount Seed to Plant	Linear Feet of Row	Planting Dates
Tomatoes	¼ oz.	200	June 10-July 10—North Louisiana, South Louisiana
Mustard	2 oz.	200	July 1-on
Collards	1 oz.	100	July 10-August 10 (South Louisiana only)
Cabbage	1 oz.	100	July-August
	¼ oz.	50	September
Broccoli	1 oz.	100	July 10-August 10
Cauliflower	1 oz.	100	July 10-August 10
Cucumber.....	1 pkt.	50	August 10-20
Radishes	½ oz.	50	August 20-October 20
	½ oz.	50	August 10-September 10
Lettuce	¼ oz.	50	October
Snap Beans (Bush)	1 lb.	100	September 1
Snap Beans (Pole)	½ lb.	100	August 15-20
Carrots	1 oz.	100	July-September
English Peas	1 lb.	100	September 1 (South Louisiana)
Turnips	2 oz.	200	July-November
Beets	1 oz.	50	July-November
Onions	1 oz.	100	September-October
Shallots	1 lb.	100	September-December
Lima Beans (Bush)	¼ lb.	50	August 10-20
Swiss Chard	½ oz.	100	July-September
Irish Potatoes	14 lbs.	200	September 1-10 in South Louisiana—August 15 in North Louisiana
Rutabaga	1 oz.	100	July 10-August 10
Spinach	3 oz.	100	Oct. 20-February
Okra	2 oz.	100	July 1-15
Squash	½ oz.	50	July 15-August 15



## MORTON'S SUGAR CURE

All in one easy operation you salt, sugar-cure, and impart the curative and flavoring properties of smoke to the meat. This one convenient product enables you to do the entire job all at the same time. 2½-lb. can 25c; 10-lb. can \$1.15. Postpaid, 40c, \$1.30.





# FOR A VICTORY GARDEN

(a family of five)

How to Plant	Depth to Cover Seed
Sow on row in hills. Thin to one plant 2 feet apart	1/8 in.
Sow in rows. Make frequent plantings	1/8 in.
Sow on row. Thin to one plant 18 inches to 2 feet apart	1/8 in.
Sow in row. Thin to one plant	1/8 in.
Sow in seed bed. Transplant six weeks later	1/8 in.
Same as cabbage	1/8 in.
Sow in row. Thin to one plant 2 feet apart	1/8 in.
Make plantings 2 to 3 feet apart. Thin to one plant to hill	1/2 in.
Make plantings every 10 days, planting 10 feet at a time	1/8 in.
These radishes develop slowly but will stand cold	1/8 in.
Sow in seed bed. Transplant for head lettuce. Sow on row—green lettuce	1/8 in.
Sow on row, 2 inches apart	1/2 in.
Sow on row, 2 inches apart. In the drill or hills 18 inches to 2 feet apart	1/2 in.
Sow on row. Plants should stand 2 inches apart in rows	1/8 in.
Sow on row. Plants should stand 1 inch apart in row	1/2 in.
Sow on row. Plants should stand 2 inches apart	1/8 in.
Sow on row. Plants should stand 2 to 4 inches apart	1/4 in.
Sow in seed bed. Transplant 8 weeks later, 2 inches apart in row	1/8 in.
Plant sets 4 to 6 inches apart	1 in.
Sow on row. Plants should stand 6 to 8 inches	1/2 in.
Sow on row. Plants should stand about 12 inches apart	1/4 in.
Plant on row 10 inches apart	4 in.
Thin 3 to 4 inches apart	1/8 in.
Sow on row. Thin as larger plants are ready for use	1/8 in.
Plant from 2 to 3 feet apart on row	1/4 in.
Plant in hills 2 to 3 feet apart and thin to one to two plants per hill	1/2 in.

## MORTON'S SAUSAGE SEASONING

In one convenient package you get all of the seasoning ingredients needed to make sausage that is always good. The salt, spices, sage, peppers and other seasoning ingredients are all properly blended in exactly the right proportions—there is no guesswork, no disappointment. 10-oz. can, 30c. Postpaid, 40c.

## MORTON'S TENDER QUICK

Especially prepared for making a pumping pickle to pump around the bones of hams and shoulders and large joints of other kinds of meat; and also for curing loins, backbone, spareribs, etc., and for curing beef, lamb and game. 2½-lb. can, 50c. Postpaid, 65c.



# SUMMER AND FALL PLANTING GUIDE FOR A VICTORY GARDEN

(Based on the needs of a family of five)

Vegetable	Amount Seed to Plant	Linear Feet of Row	Planting Dates	How to Plant	Depth to Cover Seed
Tomatoes	¼ oz.	200	June 10-July 10—North Louisiana, South Louisiana	Sow on row in hills. Thin to one plant 2 feet apart	1/8 in.
Mustard	2 oz.	200	July 1-on	Sow in rows. Make frequent plantings	1/8 in.
Collards	1 oz.	100	July 10-August 10 (South Louisiana only)	Sow on row. Thin to one plant 18 inches to 2 feet apart	1/8 in.
Cabbage	1 oz.	100	July-August	Sow in row. Thin to one plant	1/8 in.
	¼ oz.	50	September	Sow in seed bed. Transplant six weeks later	1/8 in.
Broccoli	1 oz.	100	July 10-August 10	Same as cabbage	1/8 in.
Cauliflower	1 oz.	100	July 10-August 10	Sow in row. Thin to one plant 2 feet apart	1/8 in.
Cucumber	1 pkt.	50	August 10-20	Make plantings 2 to 3 feet apart. Thin to one plant to hill	1/2 in.
Radishes	½ oz.	50	August 20-October 20	Make plantings every 10 days, planting 10 feet at a time	1/8 in.
	½ oz.	50	August 10-September 10	These radishes develop slowly but will stand cold	1/8 in.
Lettuce	¼ oz.	50	October	Sow in seed bed. Transplant for head lettuce. Sow on row—green lettuce	1/8 in.
Snap Beans (Bush)	1 lb.	100	September 1	Sow on row, 2 inches apart	1/2 in.
Snap Beans (Pole)	½ lb.	100	August 15-20	Sow on row, 2 inches apart. In the drill or hills 18 inches to 2 feet apart	1/2 in.
Carrots	1 oz.	100	July-September	Sow on row. Plants should stand 2 inches apart in rows	1/8 in.
English Peas	1 lb.	100	September 1 (South Louisiana)	Sow on row. Plants should stand 1 inch apart in row	1/2 in.
Turnips	2 oz.	200	July-November	Sow on row. Plants should stand 2 inches apart	1/8 in.
Beets	1 oz.	50	July-November	Sow on row. Plants should stand 2 to 4 inches apart	1/4 in.
Onions	1 oz.	100	September-October	Sow in seed bed. Transplant 8 weeks later, 2 inches apart in row	1/8 in.
Shallots	1 lb.	100	September-December	Plant sets 4 to 6 inches apart	1 in.
Lima Beans (Bush)	¼ lb.	50	August 10-20	Sow on row. Plants should stand 6 to 8 inches	1/2 in.
Swiss Chard	½ oz.	100	July-September	Sow on row. Plants should stand about 12 inches apart	1/4 in.
Irish Potatoes	14 lbs.	200	September 1-10 in South Louisiana—August 15 in North Louisiana	Plant on row 10 inches apart	4 in.
Rutabaga	1 oz.	100	July 10-August 10	Thin 3 to 4 inches apart	1/8 in.
Spinach	3 oz.	100	Oct. 20-February	Sow on row. Thin as larger plants are ready for use	1/8 in.
Okra	2 oz.	100	July 1-15	Plant from 2 to 3 feet apart on row	1/4 in.
Squash	½ oz.	50	July 15-August 15	Plant in hills 2 to 3 feet apart and thin to one to two plants per hill	1/2 in.



## MORTON'S SUGAR CURE

All in one easy operation you salt, sugar-cure, and impart the curative and flavoring properties of smoke to the meat. This one convenient product enables you to do the entire job all at the same time. 2½-lb. can 25c; 10-lb. can \$1.15. Postpaid, 40c. \$1.30.



## MORTON'S SAUSAGE SEASONING

In one convenient package you get all of the seasoning ingredients needed to make sausage that is always good. The salt, spices, sage, peppers and other seasoning ingredients are all properly blended in exactly the right proportions—there is no guesswork, no disappointment. 10-oz. can, 30c. Postpaid, 40c.

## MORTON'S TENDER QUICK

Especially prepared for making a pumping pickle to pump around the bones of hams and shoulders and large joints of other kinds of meat; and also for curing loins, backbone, spareribs, etc., and for curing beef, lamb and game. 2½-lb. can, 50c. Postpaid, 65c.



# They Make Poor Land GOOD ... Good Land Better

## FIELD SEEDS



**NITRAGIN  
on  
ALFALFA**  
The wonderful nodules enrich the soil and insure a big crop.

## NOTICE

On account of unsettled market conditions on field seeds, we have not priced any large quantities. Write us for prices. We are large handlers of Vetch, Rye Grass and Austrian Winter Peas. In fact, field seeds of all kinds. We can save you money.

**INOCULATOR PRICES**  
When Ordering, Always Specify Name of Seed

**NITRAGIN**  
The Original Legume Inoculator

### Alfalfa, All Clovers

Size	Retail
½ bu. each.....	\$ .30
1 bu. each.....	.50
2½ bu. each.....	1.00

### Vetch, Austrian Peas, Canadian Peas, Beans

1½ bu. each.....\$ .50

### Lespedeza

Small (Inoculates up to 50 lb. seed).....	\$ .35
Large (Inoculates up to 100 lbs. seed).....	.50

**PERSIAN CLOVER**—A very valuable new clover for the South. Furnishes splendid grazing for cattle from December until June, and yields 2 to 3 tons of rich nutritious hay per acre, which can be easily cut and cures very quickly. Is a splendid soil builder, and will thrive on clay or loamy soils. Sow 6 to 8 pounds per acre from September to November, and cover lightly. Reseeds itself even when closely grazed. Makes an upright growth 2 to 3 feet high. Will stand wetter lands than most clovers. Seed should be inoculated with NITRAGIN. See page —. Price: Lb. 60c; 5 lbs. \$2.50 postpaid. Write for prices on larger quantities.

**SWEET CLOVER OR MELILOTUS**—Also known as Bokhara Clover. As a land-builder it has few equals. It is fine for raising bees and to build up your poor land. Sow 12 pounds per acre in February planting. Lb. 40c; 5 lbs. \$1.50, postpaid.

**YELLOW BLOSSOM SWEET CLOVER**—The Yellow Blossom type is very similar to that of the White Blossom. For those who wish to use Sweet Clover for pasture, hay and bee purposes, we would advise the use of the Yellow Blossom type. Lb. 25c; 3 lbs. 65c, postpaid. Write for prices on larger quantities.

**HAIRY PERUVIAN ALFALFA**—Tall, vigorous growing and will live as long as any type where the winters are not too cold and where there is summer moisture. Gives you more cuttings than any other type and after each cutting it recovers rapidly. Considered superior for the South. Sow during September and October in thoroughly prepared, well drained soil, broadcast or in drills at the rate of 15 to 20 pounds per acre. Seed should be inoculated with NITRAGIN. Prices: Lb. 50c; 5 lbs. \$2.25, postpaid. Write for prices on larger quantities.

**RED CLOVER**—Sow in the fall or spring. 12 to 15 lbs. to the acre. Largely used in combination with other grasses and clovers for permanent pastures. Prices: Lb. 60c; 5 lbs. \$2.50, postpaid. Write for prices on larger quantities.

**WHITE DUTCH CLOVER**—This clover does well in the Central South. Most all permanent lawn and pasture mixtures should have some White Clover. By itself it makes good grazing for cattle and sheep. Lb. 90c; 5 lbs. \$4.00, postpaid. Write for prices on larger quantities.

**ALSIKE CLOVER**—Also called Swedish Clover. Best clover for wet lands. Lb. 50c; 5 lbs. \$2.00, postpaid. Write for prices on larger quantities.

**FANCY BERMUDA**—Most valuable grass for the South. Grows on all kinds, from heaviest clay to the lightest sand and furnishes abundant pasturage. Bermuda withstands drought and scorching summer sun. Sow 5 to 10 pounds per acre (2 pounds per 1,000 sq. ft. for lawns), March 1 to September 1 in lower South. Seed will not germinate in cold ground. 20 to 30 days to germinate. Seeds frozen by U. S. Govt.

**HULLED BERMUDA**—Germinates in a week with proper moisture conditions, almost as quick as Rye Grass. Seeds frozen by U. S. Govt.

**CARPET GRASS**—Carpet Grass is one of the most valuable pasture grasses for the lower South. It grows on poor sandy soils better than Bermuda and does well on most any soil with a fair amount of moisture. Seeds frozen by U. S. Govt.

**STECKLER'S FIELD RYE (Abruzzi)**—Lb. 20c; 5 lbs. 85c, postpaid.

**STECKLER'S WHEAT (Red May)**—Lb. 20c; 5 lbs. 85c, postpaid.

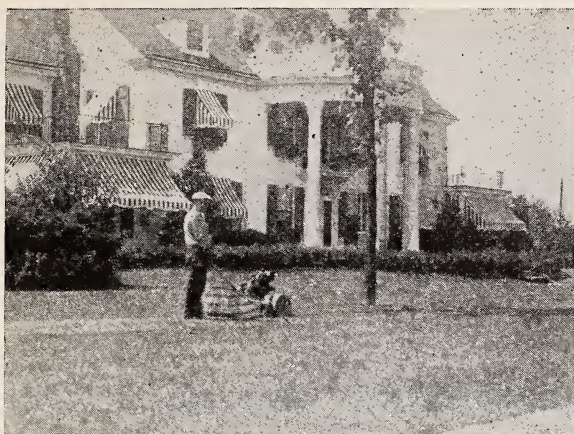
**GIANT BUR CLOVER**—The South's greatest cover crop and soil building legume. Lb. 50c; 5 lbs. \$2.00, postpaid. Write for prices on larger quantities.

**STECKLER'S BARLEY (Bearded)**—Lb. 20c; 5 lbs. 90c, postpaid. Write for quantity prices.

**OATS (Texas Red Rust Proof)**—Peck 35c; bu. \$1.35; 4 bu. sack \$5.00, not prepaid.

**STECKLER'S RAPE (Dwarf Essex)**—Lb. 35c; 5 lbs. \$1.25, postpaid. Write for quantity prices.

# THE MOST BEAUTIFUL LAWNS IN THE SOUTH are made with STECKLER'S WINTER LAWN GRASS SEED



Lawn of Winter Grass

stands repeated mowing on lawn or golf green. Sow 10 lbs. per 1,000 sq. ft. (50x20 ft.) for lawn; 50 lbs. per acre for pasture. Prices: Fancy Seed, lb. 30c; 5 lbs. \$1.00, postpaid. Not prepaid, 10 lbs. \$1.50; 25 lbs. \$3.50; 50 lbs. \$6.25; 100 lbs. \$12.00; 1,000 lbs. \$11.50.

## ITALIAN RYE GRASS AMERICAN GROWN

The winter grass for all the South. Superior to foreign grown Italian and English Rye Grass seed. Our fancy seed is heavier and more plump, full of vitality, quick to start and strong in growth. It is a fast-growing annual grass with long flat leaves, growing in tufts if left uncut. It is valuable to dairymen for winter and spring grazing, but its great use is for winter and spring lawns.

Scratch seed in Bermuda sod for green lawn until the Bermuda comes out again in summer. By itself it makes a delightful green lawn, in sun or shade, all fall, winter and spring. It



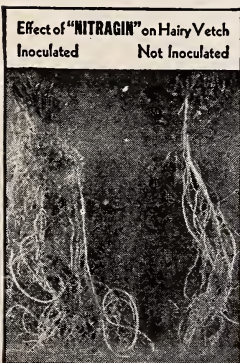
## AUSTRIAN WINTER PEAS DOUBLES YOUR CORN and COTTON YIELDS

Rapidly climbing to the top as the leading soil-builder and winter crop throughout the entire South, because of its large, heavy growth on practically all soils and its ability to resist winter freezes. Matures two weeks ahead of Vetch and makes a splendid temporary pasture in late winter. Furnishes grazing for your livestock, and decays rapidly when plowed under.

Sow Austrian Winter Peas during September and October, in drills, at the rate of 30 pounds per acre and cover 2 inches. May also be sown broadcast and disked in. Sowing the seed broadcast in cotton middles and straddling the rows with a two-horse cultivator with the disk hillers or plows is a very good method of covering. Lb. 25c; 5 lbs. 75c, postpaid. Not prepaid: 10 lbs. 90c; 25 lbs. \$2.00; 50 lbs. \$3.80; 100 lbs. \$7.25; 1,000 lbs. \$70.00.

## HAIRY VETCH An Outstanding and Reliable Soil Builder

Poor soil can soon be made rich with it. Planted combined with small grain, such as Oats and Rye or seeded alone makes splendid winter and spring pasturage. Stands severe winters without injury, grows on practically all types of soil. Vetch is usually turned under in early April. A good crop is equivalent to 250 pounds or more of Nitrate of Soda and valuable humus is put into the soil. Planted September to December, sow 20 to 25 pounds per acre alone, 15 pounds with small grain. Inoculate with NITRAGIN C. Prices: Lb. 35c; 5 lbs. \$1.40; postpaid. Not prepaid: 10 lbs. \$1.80; 25 lbs. \$4.15; 50 lbs. \$7.75; 100 lbs. \$14.50. Write for prices on larger quantities.



## COMMON VETCH

Common Vetch prefers sandy loam, well drained, but will produce a good crop on most any other soil where water does not stand. When planted alone it requires 30 to 40 lbs. to the acre, half that quantity is sufficient when sown with small grain. Seed should be inoculated with Nitragin. Prices: Lb. 25c; 5 lbs. 75c, postpaid. Not prepaid, 10 lbs. 90c; 25 lbs. \$2.00; 100 lbs. \$7.25. Write for prices on larger quantities.



# Plant This Year a Steckler Prize Winning Flower Seeds

Loads of Beautiful Flowers

Flower seeds are something that everyone is interested in because hidden within their tiny coats are the qualities which, after they sprout, and grow, and flower, reveal colorings and characteristics almost unbelievable.

Nothing will give you so many blooms for such a long time as these annuals.

There is no excuse for your not having some flowers around your house when it just takes a few packets of seed, sunshine and rain to have them in all their beauty.

Our seeds are tested and sent to you in big full-measure packets. The instructions are on every packet for planting each kind of seed.

**ALYSSUM (Madwort)**—Splendid little annual for edging and bedding. Sow July-November. Height 6 to 9 inches.

**Little Gem**—Dwarf, compact grower thickly covered with small white flowers. Pkt. 10c; ½ oz. 45c; oz. 75c.

**Violet Queen**—Similar to Little Gem, but carries an abundance of delicate, lilac-colored blooms. Pkt. 10c; ½ oz. 60c.

**ANTIRRHINUM (Snapdragon)**—For exquisite beauty few flowers equal the modern Snapdragons. They make glorious massed beds and borders, and are extremely well adapted for cutting. Sow August-November. Height 2 to 3 feet.

**Crimson King**—Rich crimson, semi-tall sort. Very good for bedding. Pkt. 20c.

**Canary Bird**—A very fine variety of giant yellow blooms. Pkt. 15c.

**Loveliness**—Rose pink, giant flowered. Pkt. 20c.

**Snowflake**—Pure snow-white blooms. Tall, large flowering. Pkt. 20c.

**Pinkie**. Clear rose of the Majus. Grandiflorum type and rust proof. Pkt. 20c.

**Shasta**. Pure white, a very desirable variety and rust proof. Pkt. 20c.

**Rust Resistant California Giant Mixture**. This mixture of rust proof Snapdragons is the best all around type, equally fine for border or for cutting. Pkt. 20c; oz. \$2.00.

**AQUILEGIA (Columbine)**—Long-spurred Hybrids Mixed. Few perennials rival the Aquilegia with their odd-shaped flowers. Prefer partly shaded location. Sow during October-November. Height 2 ½ feet. Pkt. 25c; oz. \$3.00.

**ARMERIA (Thrift, Sea Pink)**—Dwarf-growing perennials with grassy leaves and a tufted habit of growth. The flowers are borne in globular heads during March to May, and the plants are suitable for edgings to borders. Pkt. 15c.

**BALSAM (Lady-Slipper)**—Greatly improved strain, with large, waxy, camellia-like blooms in soft and brilliant shades and combinations. Sow the seed during July and August in a well drained soil. Delight in a sunny location. Height 2 feet. **Mixed**—Improved. Camellia-flowered. Very double and beautiful colors. Pkt. 10c; oz. 75c.

**Camelia Flora Alba**—Pure white flowers, used for bouquets. Pkt. 10c; oz. 80c.

**CALENDULA (Pot Marigold)**—One of our most desirable fall flowers. They are of easy culture, very prolific bloomers, and produce a splendid effect in beds and massed borders. Highly prized as cut flowers. Sow August-October. Height 1 to 1 ½ feet.

**Radio**—Distinct from any other Calendula. The petals are large and double flowers instead of being flat, forming almost a globe shaped flower. It is rich golden orange in color, blooms freely. Pkt. 10c; oz. 50c.

**The Ball**—It has fine stems, immense double flowers of brilliant glistening orange. Great favorite. Pkt. 10c; oz. 75c.

**Orange King**—Outer petals are slightly imbricated, while those of the center are curved like those of a peony. Color glowing orange. Pkt. 10c; oz. 50c.

**Sensation**—Vigorous growth, flowers borne on stout stems, blooms are flat, brilliant orange with a scarlet sheen and full yellow center. Pkt. 10c; oz. 75c.

**Lemon Queen**—Sulphur yellow, double blooming. Pkt. 10c; oz. 75c.

**Chrysantha**—Large double buttercup yellow flowers, flowers incurved, extremely popular. Pkt. 10c; oz. 75c.

**Orange Shaggy**—New orange colored Calendula, grows 18 inches high. Pkt. 10c; oz. 75c.

**CALLIOPSIS**—A lovely and graceful annual for beds and borders. The small, daisy-like flowers, in striking shades of crimson, orange, and gold, carried on thin, wiry stems. Height 1 ½ feet. Sow July-October. Pkt. 10c; oz. 50c.

**COREOPSIS LANCEOLATA**—Large flowered, golden yellow, splendid cut flowers. Pkt. 10c; oz. 75c.



Aquilegia



Rust Resistant  
California Giant



Calendula, Chrysantha



# "Garden Beautiful"

**CANDYTUFT**—These delightful annuals may be grown with splendid success in fall. They furnish your beds and borders with masses of colors, and are highly prized for cutting. Sow September-November. Height 1 foot.

**Coronaria**—Hyacinth flowered white. A very fine variety.

Pkt. 10c; oz. \$1.00.

**Umbellata**—White. Pkt. 10c; oz. 75c.

**Umbellata**—Pink. Pkt. 10c; oz. 75c.

**Umbellata**—Crimson. Pkt. 10c; oz. 75c.

**Umbellata**—Rose Cardinal. Pkt. 10c; oz. 75c.

**Umbellata**—Purple. Pkt. 10c; oz. 75c.

**Mixed All Colors**—Pkt. 10c; oz. 75c.

**CANTERBURY BELLS**—These old-fashioned favorites are much admired for their beautiful, large, bell-shaped flowers in shades of white, rose, and blue. Very showy in mixed borders. Sow during October-November. Height 2 feet. Single Annual Mixed—Pkt. 10c; oz. \$1.50.

**CARNATION**—Few flowers surpass in beauty of form or delicious fragrance the richly hued Carnation. Easily grown from seed, and will produce fine, large blooms if planted in good, rich, well-cultivated soil. Sow during October-November. Height 15 inches.

**Dianthus Caryophyllus Margaritae Robustus**—Fl. pl. Semi High Double Margaret Carnation. Dwarfish habit. The flowers are much variegated, occasionally producing yellow ones. Pkt. 10c; oz. \$1.50.

**COSMOS**—Delightful annuals with ornamental, feathery, fresh green foliage and large, artistic flowers produced freely throughout the season. Effective as a background for borders and excellent for cutting. Sow during August and September. Height 4 feet.

**Bipinnata Hybrida**—White, yellow and mixed. A very showy annual similar in shape to the Bright Eye Daisy or Coreopsis, but taller and more brilliant in color. Oz. 60c.

**Early Double**—Forms a perfect bush, bearing attractive double flowers of good size on long stems, making a wonderful cut flower. Oz. \$2.00.

**Early Klondyke Orange Flare**—Long stemmed bright orange blooms. Early and long blooming. Pkt. 10c; oz. 95c.

**Sensation Finest Mixed**—Mammoth size flowers, 4 to 5 inches in diameter, with broad, heavy fluted petals carried on very long strong stems. Mixture contains white and shades of rose and pink. Pkt. 10c; oz. \$1.00.

**CYNOGLOSSUM (Amabile)**—Also called the "Chinese Forget-Me-Not." A splendid annual of upright bushy growth, producing small single flowers resembling very much a Forget-Me-Not in shape and color.

**Blue**—A lively plant producing sprays of brilliant blue Forget-Me-Not-like flowers. Grows easily and blooms for a long season. 18 to 24 inches high. Pkt. 10c; oz. 50c.

**Pink**—Similar to above, but bearing lovely pink blossoms. Pkt. 15c.

**CORNFLOWER (Ragged Robin)**—Old fashioned garden favorite. Show to best advantage when massed.

**Double Mixed**—Pkt. 10c; oz. 65c.

**BELLIS PERENNIS**—Finest double mixed variety; 4 inches high. October till January. Sold out.

**DAISY SHASTA (Alaska)**—Highly improved strain with very large and broad overlapping petals of the purest white color. Pkt. 10c; ½ oz. 70c.

**DIANTHUS or PINKS**—This group embraces some of our most beautiful and best-loved flowers for bedding and borders. They are unsurpassed for striking colors and profuse blooming. The fragrant, often delicately fringed flowers are of fine velvety texture. Do best in a sunny location. Sow July-November. Height 1 foot.

**Chinensis**—Chinese Pink. Single. A beautiful class of annuals of various colors which flower very profusely in early Spring and Summer. Pkt. 10c; oz. 65c.

**Heddewiggii**—Japan pink. Double. This is the most showy of any of the annual pinks. The flowers are very large and of brilliant colors. Pkt. 10c; oz. 90c.

**GAILLARDIA (Blanket Flower)**—Mixed. Planted in early spring and will continue to bloom from early summer to November, excellent for beds, borders or for cutting. Pkt. 10c; oz. \$1.00.

**GERBERA (Transvaal Daisy)**—Hybrids. Dainty plants with graceful, elegant, marguerite-like flowers in delightful shades of red, cerise, salmon, orange, yellow, and white, carried on long, slender stems. Furnish artistic material for indoor decoration. Start seed in flats during September, October, and November. Height 15 inches. Succeeds well in the South. Sold out.

**GLOBE AMARANTH (Bachelor's Button)**—A distinct and showy everlasting flower with pretty, small, clover-like blossoms in purplish red, pink, and white shades. Splendid for massing in beds and borders. Delightful cut-flower. Sow July and August. Height 2 feet. Pkt. 10c; oz. 75c.

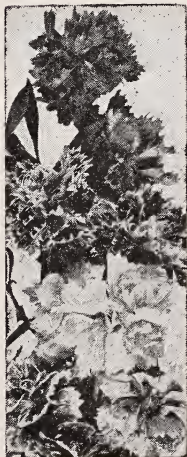
**Separate Colors**—Red, Pink, White. Pkt. 10c; oz. \$1.00.



Canterbury Bells,  
Annual



Cosmos,  
Orange Flare



Dianthus

# Petunias Are Indispensable



Petunia, Fringed



Larkspur  
Giant Imperial



Marigold  
Yellow Supreme



Marigold  
Tall African

**GYPSOPHILA (Baby's Breath)**—Easy to grow annuals of extremely delicate and fairy-like growth. Greatly admired for their myriads of small, dainty, star-shaped blooms, forming a charming misty effect. Fine bed and border plants, and indispensable for combining with other cut-flowers. Sow during September, October and November. Height 1½ feet.

White—Pure white. Pkt. 10c; oz. 50c.

Pink—A very soft pink. Sold out.

**HOLLYHOCK**—This dignified and stately perennial adorns many a well-planned garden. Unequaled as a background for other flowers, planting among shrubbery, or against houses, fences, or the like. Sow during October-November. Height 5 to 7 feet. Mixed Annual. Pkt. 10c; oz. \$1.00.

**LARKSPURS (Annual Delphiniums)**—With their finely cut foliage and tall, graceful, floral spikes of double blossoms, Larkspurs provide beautiful, stately backgrounds for mixed borders, and are also wonderful for planting in large, solid beds. Thrive well in almost any well-drained soil but prefer a sunny location. Sow during October-November for early spring blooming.

Double Stock-flowered (Height 3½ feet)

White—Double showy white flowers, borne on long stems. Pkt. 10c; oz. 85c.

Dark Blue—Annual, long erect spikes of dark blue, beautiful blossoms. Pkt. 10c; oz. 85c.

Bright Carmine—Long erect spikes of fiery carmine flowers, very lovely and effective. Pkt. 10c; oz. 85c.

Apple Blossom—Very attractive spikes in pink blooms. Pkt. 10c; oz. 85c.

Miss California—Rich deep pink on salmon ground, very long stems and exceptionally long row of flowers. Pkt. 15c.

Giant Imperial—Mixed colors; very showy. Pkt. 10c.

**LOBELIA (Erinum)**—Lobelia. A very graceful plant with white and blue flowers. Half foot. October till March. Pkt. 10c; ½ oz. \$1.00.

**LUPINS**—Few flowers give such a glorious display in the garden as Lupins. They are very prolific bloomers and carry graceful, long-stemmed, pea-shaped flower-spikes in delightful shades of white, rose, and blue. Sow September, October and November. Height 1½ feet.

Mixed—Free flowering, easily grown annual, with long graceful spikes of rich and various colored pea shaped flowers; prefers a little shade. Pkt. 10c; oz. 75c.

White—Same as above, pure white flowers. Pkt. 10c.

Blue—Same as above but blue flowers. Pkt. 10c.

Roseus—Rose colored flowers, long stems. Pkt. 15c.

**MARIGOLD**—These well-known, hardy, free-flowering annuals enjoy a well-deserved popularity. The African group averages 3 feet in height and has uniformly large, densely double flowers in yellow and orange shades. The French type is dwarf in growth, more bushy, and with striped flowers in yellow and bronze shades. Both are excellent for beds and borders and bloom profusely. Sow July to October.

**Tagetes Erecta**—African or Tall Growing Marigold. Very showy annual for borders with bright yellow flowers. Two and a half feet high. Pkt. 10c; oz. 75c.

**Tagetes Patula**—French or Dwarf Marigold. Covered with yellow and brown flowers. One and a half feet high. Pkt. 10c; oz. 70c.

**Dixie Sunshine**—Large ball-shaped flowers composed of dozens of tiny five petaled florets, gracefully interlocking, daintly fringed in effect. Brilliant golden yellow. Pkt. 15c.

**Tall African All Double Yellow**—Exactly the same as the Tall African Marigold in size, but a lovely yellow color. Pkt. 15c; oz. \$1.25.

**Tall African All Double Orange**—Exactly like the tall African Marigold in size, deep orange. Pkt. 15c; oz. \$1.25.

**Guinea Gold**—A distinct type growing 2 to 2½ feet tall, brilliant orange flushed with gold, an early blooming sort, loosely ruffled flowers. Pkt. 10c; oz. 75c.

**Yellow Supreme**—Fluffy well rounded blooms with frilled petals of rich lemon yellow. Unsurpassed as a cut flower. Vigorous growing and free branching with foliage which is practically free from that objectionable Marigold odor. Pkt. 10c; oz. \$1.00.

**Gigantea Sunset Giants**—Large flowers, produced in profusion, of delicate fragrance. Flowers are loosely formed, full centered, with broad heavy petals. Sunset Giants is a mixture ranging from deep orange through golden orange, deep golden yellow, light yellow, lemon yellow and a delightful new shade of primrose. Pkt. 15c; oz. \$1.00.

**Crown of Gold**—A gold medal winner for 1937. First known Marigold with odorless foliage. Flower centers are of short curled quilled petals with a collar of flat guard petals on outside. Color is orange; flowers double. Pkt. 10c.

**French Tall Single Ferdinand**—A very gay type of Marigold, single flowering, with a neat, round, crested center of dainty tubular florets in an arresting shade of golden yellow, surrounded by a single row of broad, mahogany-red guard petals. Flowers medium size but extremely showy. Plants are tall, growing 20 to 24 inches. Pkt. 15c.



# for Modern Garden Beauty

**NASTURTIUM**—Unequaled for easy culture, brilliancy of blooms, and general excellence. Sow during months of September and October.

**Dwarf Mixed**—Blossoms red, yellow and salmon, used with leaves as salad. Seed pods while young and succulent picked and used as capers. Pkt. 10c; oz. 25c;  $\frac{1}{4}$  lb. 65c; lb. \$2.00.

**Tall Mixed**—Same as above, makes an excellent screen for unsightly places. Pkt. 10c; oz. 25c;  $\frac{1}{4}$  lb. 65c; lb. \$2.00.

**Golden Gleam**—A double sweet scented Nasturtium, golden yellow blooms with stiff, long stems. This is a distinct and new variety of Nasturtiums and being offered for the first time. Pkt. 10c; oz. 25c;  $\frac{1}{4}$  lb. 65c.

**Double Gleam Hybrids**—A wide assortment of colors, sweet scented foliage fresh green. Pkt. 10c; oz. 25c;  $\frac{1}{4}$  lb. 60c.

**Double Scarlet Gleam**—Flowers are fiery orange scarlet and almost three inches across and are uniformly well formed. Pkt. 15c; oz. 25c;  $\frac{1}{4}$  lb. 65c.

**MATRICARIA (Fever Few)**—Double white. A perennial bearing small double white flowers, good for cutting. Pkt. 10c;  $\frac{1}{2}$  oz. 50c.

**NEMOPHILLA INSIGNIS**—Blue. Makes a very effective front row to bed or border, also popular for pots. December to April. Pkt. 10c; oz. 60c.

**GIANT PANSY**—The exquisite beauty of the Pansies is well known to every lover of flowers. They are dwarf, compact growers with large, conspicuous blooms of velvety texture in an unusual, striking range of colors and combinations. One of the finest plants for beds and borders; also delightful for indoor decoration in low bowls.

**Large Trimardeau**—Mixed. This is the largest variety in cultivation, the flowers are well formed, generally three-spotted, quite distinct; the plants grow compact. October to March. Sold out.

**Roggli's Gt.**—Mixed. A very early variety of finest and rarest flowers and coloring. Very large blooms and is planted from October to March; grows about 8 inches high. Pkt. 50c.

**PETUNIA**—For freedom of bloom, variety of color and effectiveness, these annuals have no equal. Extremely hardy, unaffected by heat, drought, or rain. Planted extensively for bedding, bordering and give an excellent display in porch and window boxes. Sow from July to October. Height 1 to 2 feet.

**Dainty Lady**—Single Fringed. An entirely new color in Petunias. A delicate golden yellow color. Plants are compact, semi-dwarf and free. Pkt. 75c.

**Hybrida**—Mixed. Splendid mixed hybrid varieties. Plants are of spreading habit; about 1 foot high. Pkt. 10c; oz. \$1.00.

**Rosy Morn**—A very pleasing clear pink with a broad white throat. A splendid sort for porch boxes, pots and beds. Grows 1 foot. Pkt. 15c; oz. \$2.00.

**Giants of California**—Mixed. Very large flower and colors embrace every conceivable shade. Pkt. 25c.

**Theodosa**—Enormous single ruffled flowers of a beautiful shade of rose pink, with golden yellow veined center. Very popular. Pkt. 35c.

**Rose of Heaven**—Rich, brilliant and effective rose color. Pkt. 20c.

**Balcony**—Mixed. Single large flowering, makes an effective display over a long season. Pkt. 25c;  $\frac{1}{4}$  oz. 75c.

**Hollywood Star**—Novelty with five-pointed star-shaped flowers of rose pink with creamy yellow in throat. Plants grow rather bushy at first, then growing rank towards end of season. Early blooming and very prolific. Pkt. 35c.

**Miniature Ruffled Betsy Ross**—Red and White, with the white blending to golden and the red blending to very deep red in the throat. Blooms are 2  $\frac{1}{2}$  inches in diameter, well ruffled with a good open throat. Uniform and compact in growth; unsurpassed for bedding purposes. Pkt. 50c.

**Giants of California Supreme Florist Strain**—One of the most striking of Petunias in various shades of pink, rose and salmon rose, all with light, richly veined throats, and many striped or combining two or more rose shades in one bloom. Blooms extra large, heavily ruffled. Pkt. 75c.

**Purple**—One of the best rich velvety purple Petunias. Free blooming and compact. Pkt. 15c; oz. \$1.85, postpaid.

**PHLOX**—These marvelous annuals flourish in all their glory throughout the late summer and fall. The long-stemmed clusters of showy, round flowers are unsurpassed for their wide range of colors and beautiful shades. Particularly attractive in massed beds. Sow July to October.

**Perennial Mixed**—A mixture from a celebrated collection. Seed slow in germinating. Sold out.

**Drummondii Grandiflora Alba**—Pure white, some with purple or violet eyes. Sold out.

**Drummondii**—Mixed. Their various colors and length of flowering, with easy culture, make them a favorite with everyone. One foot high. April. Pkt. 20c; oz. \$4.00.

**Fiery Scarlet**—Easy culture and a favorite. One foot high. Pkt. 25c.

**Flesh Pink**—Same as above, but a beautiful shade of pink. Pkt. 25c.

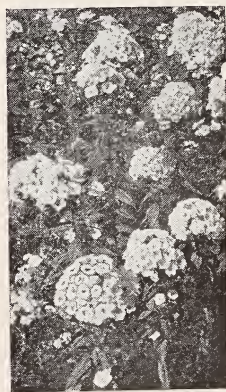
**Star Mixed**—Dwarf-habit, attractive star shaped flowers; a novel variety. Pkt. 25c.



Gleam Nasturtiums



Pansies



Drummondii Phlox

WRITE FOR PRICES ON QUANTITY LOTS.



# Enjoy Magnificent Sweet



Shirley Temple



Stocks

**PYRETHRUM (Golden Feather)**—Ornamental, golden-leaved annuals for borders and edging. Dwarf bushy growers, with finely cut foliage. Sow August to November. Height 1 foot. Pkt. 10c; oz. 90c.

**POPPY**—Especially desirable for massing in beds.  
**Wild Rose**—Pink, very showy, single blossoms; annual, 2 to 3 feet high. Pkt. 10c; ½ oz. 45c.  
**Flanders**—Very showy. Single red blossoms; annual, 2 to 3 feet high. Pkt. 10c; oz. 50c.  
**Shirley**—Single Mixed. The range of colors extending from pure white through the most delicate shades of pale pink, rose and carmine to crimson, white edged, shaded and striped. Pkt. 10c; oz. 50c.  
**Double Shirley Mixed**—Mixed. A very fine mixture of white, pink and old rose shades, desirable. Pkt. 10c; oz. 50c.  
**California Poppy**—Single. A very free flowering plant, good for masses. Does not transplant well. One foot high. Yellow color. Pkt. 10c; oz. 50c.

**SALVIA (Scarlet Sage)**—Well known decorative bedding plants.  
 Can be grown as an annual as it flowers freely from seed the first year. Two to three feet high. February to April. Pkt. 25c.  
**Bonfire**—Dazzling scarlet. Dwarf, compact grower. Height 1½ feet. Sold out.  
**Harbinger**—The finest and most striking of all bedding Salvias. The plants are of symmetrical, dwarf, and compact growth and are covered with a blazing scarlet blanket of flowers. Height 1 foot. Sold out.  
**Blue Beard, Blue Bedder**—Wonderful, clear, dark blue flowers on long, wiry stems. Plant compact, with closely set branches. Fine for borders. Height 3 feet. Pkt. 25c.

**SOLANUM (Jerusalem Cherry)**—Ornamental plant with attractive berries. Useful pot plant for winter decorations. November to February. Pkt. 10c.

**STOCKS**—By virtue of their delightful fragrance, brilliancy and diversity of colors, profusion and duration of blooms, Stocks deserve a place in every garden. Particularly showy massed in beds. Sow September to November for early spring blooming.  
**Large-Flowering Ten Weeks**—Fine dwarf compact growers. Height 1 foot.  
**Canary Yellow, Blue Dark, Rose Pink, Scarlet**—Pkt. 10c; ¼ oz. 70c; ½ oz. \$1.25.  
**Mixed Colors**—Pkt. 10c; ¼ oz. 25c; ½ oz. 60c.  
**Double Giant Imperial Bismarck**—Early-flowering Stocks of branching habit. Fine cut-flowers. Height 2 feet.  
**Canary Yellow, Old Rose, Fiery Red, Silvery Lilac**—Pkt. 15c; ¼ oz. 90c.  
**Mixed Colors**—Pkt. 15c; ¼ oz. 65c.

**SWEET PEAS**—The range of color, combined with the exquisite beauty of form of the flowers and the gracefulness of the long stems, makes this the most popular of our annual flowers.

**Early-Flowering Spencer**—These magnificent Sweet Peas are ideal for late fall and winter blooming in the Lower South. Plant during August, September, and October.

	Pkt.	Oz.	¼ lb.	Lb.
Mrs. Hoover—Rich indigo blue.....	.10	\$.30	\$.90	\$3.25
Zvolanek's Salmon—Orange Salmon ..	.10	.30	.90	3.25
Glitters—Brilliant Cerise .....	.10	.30	.90	3.25
Harmony—Mauve lavender .....	.10	.30	.90	3.25
Snowstorm—Pure White .....	.10	.30	.90	3.25
Oriental—Cream .....	.10	.30	.90	3.25
Zvolanek's Pink—Rich Pink.....	.10	.30	.90	3.25
Zvolanek's Rose—Rose Pink.....	.10	.30	.90	3.25
Red Cross—Dazzling Scarlet .....	.10	.45	1.25	4.00
Shirley Temple (New)—Delightful Soft Rose Pink.....	.10	.45	.90	3.25
Spencer's Extra Early Christmas Flowering Mixed .....	.10	.25	.75	2.75

**LATE SPENCER (Orchid-Flowered)**—Hardy, vigorous growers, seldom winter-killed in the South. Sow during October and November and they will commence blooming in March.

	Pkt.	Oz.	¼ lb.	Lb.
Avalanche—Glistening White .....	\$.10	\$.20	\$.60	\$2.00
Ecstasy—Blush Pink .....	.10	.20	.60	2.00
Jubilee—Scarlet Cerise .....	.10	.20	.60	2.00
Magnet—Bright Cream Pink.....	.10	.20	.60	2.00
Charming—Rose Cerise .....	.10	.20	.60	2.00
Late Spencer or Orchid-flowered Mixture—Unsurpassed for rich- ness and brilliancy.....	.10	.20	.60	2.00

DESCRIPTIVE CATALOGUE ON REQUEST.



Inoculate Sweet Peas with Nitragin . . . 10c Garden size will inoculate 1 ounce.

# Peas in your Flower Garden

**DWARF SWEET PEA MIXTURE**—A dwarf grower with large, waved flowers. Very popular bedder. Height 1 foot. Pkt. 10c; oz. 25c; ¼ lb. 90c; lb. \$3.25.

**SWEET WILLIAM** (*Dianthus Barbatus*)—Free-flowering, hardy biennial for early spring blooming. Sweetly fragrant. Sow September to November. Height 1½ feet. Annual Mixed—Pkt. 10c; oz. \$1.00.

**TORENIA FOURNIERI**—Lovely blue flowers with three large spots of darkest blue and a bright yellow throat. Blooms during summer and fall and makes fine beds and borders. Sold out.

**TITHONIA** (*Mexican Sunflower*) (*Fireball*)—Large, single flowers, orange vermilion color and especially desirable for planting among shrubbery. February to March. Pkt. 15c; oz. \$1.75.

**VIOLA CORNUTA** (*Tufted Pansies*)—Mixed Colors. Produces beautiful, pansy-like blossoms. Ideal for edging or for planting in rock-gardens. Sow August to November. Height 6 inches. Sold out.

**MAMMOTH VERBENAS**—Free-flowering, graceful annuals of spreading growth, with somber, dark green foliage covered with glorious, large, umbrella-shaped trusses of single flowers in a delightful range of soft and brilliant colors. Magnificent bedding plants. Sow July to October. Height 1 ft. White—Pure white verberna of more or less fragrance. One and a half feet high. Pkt. 10c.

**Hybrida**—Hybridized Verberna. Their long flowering and great diversity of color makes them valuable for every garden however small. All colors mixed. One and a half feet high. Pkt. 10c; oz. \$1.00.

**Scarlet**—Brilliant scarlet-red flowers of great size, flowers freely during summer. Pkt. 10c.

**Beauty of Oxford Hybrids**—Colors shade from clear rose pink to rose red. Bright and vivid. Pkt. 20c.

**Verberna Hybrida Grandiflora Crimson Glow**—Pkt. 15c.

**QUEEN ANNE'S LACE**—Hardy annual, large, loosely formed terminal clusters of tiny white flowers, used for cutting. Pkt. 10c; ½ oz. 40c.

**VINCA**—Free-flowering bedding plants of sturdy, bushy growth, with luxuriant, dark green, glossy leaves and large, single, round, five-petaled flowers in pink and white shades. Sow July to August. Height 2 feet.

**Pure White**—Pkt. 10c; oz. \$1.50.

**Rosea**—Rose Pink—Pkt. 10c; oz. \$1.50.

**Mixed**—Pkt. 10c; oz. \$1.50.

**ZINNIAS**—Zinnias, in varied forms and colors, today claim a prominent place among the preferred annual garden flowers. For fall blooming, sow during July, August and September. In 6 to 7 weeks the plants will begin to bloom; the flowers increase in size and beauty of color as the plants mature. They delight in a sunny location provided with rich soil and abundant moisture.

**Giant Dahlia-flowered**—Resemble the decorative dahlia because of their unusual depth, open and graceful growth, and curled petals.

**Canary Bird**—Primrose-yellow.

**Crimson Monarch**—Crimson-red.

**Dream**—Distinct deep lavender.

**Exquisite**—Light rose, darker center.

**Oriole**—Bright orange and gold.

**Polar Bear**—Large; pure white.

Prices on above: Pkt. 10c; ½ oz. 50c; oz. 90c.

**Mixed**—A very fine Dahlia-like flower, double, of finest blooms. Pkt. 10c; ½ oz. 50c; oz. 80c.

**California Giants**—The enormous flowers are flat and of symmetrical form.

**Orange King**—Orange scarlet.

**Rose Queen**—Striking bright rose.

**Scarlet Gem**—Deep scarlet.

**Orange Queen**—Golden orange.

**Purity**—Best white.

Prices on above: Pkt. 10c; ½ oz. 50c; oz. 90c.

**California Giants Mixture**—Every color available is represented. Pkt. 10c; ½ oz. 50c; oz. 80c.

**Lilliput Zinnias**—Elegant, small-flowering type with attractive, round, almost globular-shaped blooms resembling the pompon dahlias. Very prolific bloomer.

**Canary**—Yellow.

**Scarlet Gem**—Deep scarlet.

**Orange**—Golden Orange.

**Pink**—Deep flesh pink.

Prices on above: Pkt. 10c; ½ oz. 65c; oz. \$1.00.

**Mixed Colors**—Pkt. 10c; ½ oz. 50c.

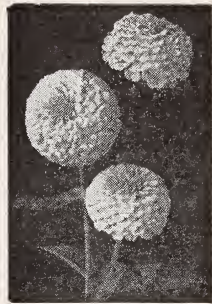
**Fantasy Finest Mixed**—Delicate lacy petaled flowers, rounded, medium sized with a wide range of beautiful colors, a really beautiful variety. Pkt. 15c.

**Fantasy Star Dust**—Flowers of medium size, shaggy petaled color is a rich deep golden yellow, free flowering, early blooming. Pkt. 10c.

**Lilliput Pastel Mixture**—Pkt. 10c; oz. \$1.00, postpaid.



Sweet William



Zinnia, Lilliput



## GOOD NEWS!

Vigoro, the complete, 11-element plant food is now available in handy tablet form for house plant and window box use. Order a box—24 tablets 10c.

**VIGORO TABLETS**

*A Product of Swift*



# Create Outdoor Beauty for



Amaryllis



Freesia



Ambassador

**AMARYLLIS (Giant-Flowered)**—New Hybrids. See illustration.) This selection of giant bloomers in wonderfully varied and brilliant colorings has been made from thousands of seedlings produced from hand hybridized flowers by an expert grower. This giant flowered strain is a mixture with the colors ranging from the darkest red through striped and light shades. Each 35c; 12 for \$3.50, postpaid.

**CALLA LILIES**—Highly decorative pot-plants with large, showy, funnel-shaped flowers.

**Godfrey's Everblooming**—Best pearl-white Calla Lily for amateurs. It is easily grown, and blooms most prolifically. Strong roots. Each 20c; 6 for 95c; 12 for \$1.70; 100 for \$12.00, postpaid.

**Elliottiana**—Extremely showy, with large, lustrous, golden yellow flowers, contrasting beautifully with the dark green leaves profusely spotted silvery white. Each 30c; 6 for \$1.45; 12 for \$2.65, postpaid.

**CHINESE SACRED LILY (Joss Flower or Flower of the Gods)**—Valued for its abundance of bloom and marvelously rapid growth. The flowers are white with a yellow cup in the center and very fragrant. Each 10c; 6 for 65c; dozen, \$1.00.

**CREOLE EASTER LILY**—This majestic and charming Lily is a product of Louisiana, and is the finest of all Easter Lilies. It is a strong grower, with extra-heavy stems and attractive, dark green foliage. The gigantic, pure white flowers are of unusually heavy texture. Bulbs may be planted during the months of October, November and December. Well-grown plants produce 15 to 20 snowy white blooms to the stalk. Medium bulbs: Each 20c; 6 for \$1.10; 12 for \$2.00. Large bulbs: Each 35c; 6 for \$1.85; 12 for \$3.50.

**LILIUM REGALE**—Free blooming, trumpet shaped, delicately scented white blooms, tinted with pink. Each 25c; 6 for \$1.20.

**CROCUS**—Our mixtures are made of good sized bulbs of named sorts and are very satisfactory for outdoor planting and excellent for rock gardens. Mixed, all colors—60c doz.; \$4.50 per 100.

**HYACINTHS—DUE TO WAR CONDITIONS, NO HYACINTHS THIS YEAR.**

**FREESIAS**—Beautiful clusters of fragrant white flowers, popular for pot culture, flowering in winter and spring. Readily forced. Plant four to six in a pot, giving plenty of water and cool location.

	6	12	100
Purity Refracta—Pure white	\$.20	\$.35	\$2.75
Rainbow Mixed—Lovely mixture	.30	.50	3.25

**GRAPE HYACINTHS**—Charming dwarf plants producing hyacinth-like heads of droopy bell-shaped flowers. Do well in any garden soil with proper drainage. Admirably adapted for naturalizing.

**Heavenly Blue**—Largest and finest blue. 6 for 35c; 12 for 60c; 100 for \$3.25.

**IRIS**—There is no trick to growing Iris. They do extremely well in any location, whether it be in full sun or semi-shade and do well in any garden soil, and do not need any amount of attention.

	Dutch Iris	3	6	12	100
<b>Wedgewood</b> —Earliest of all, large blue blooms	.....	\$.25	\$.45	\$.75	\$4.25
<b>White Excelsior</b> —Pure white	.....	.25	.40	.70	4.25
<b>Yellow Queen</b> —Best of all yellows	.....	.25	.40	.70	4.25
<b>Imperator</b> —Brilliant blue, extra early	.....	.25	.40	.70	4.25
<b>Blue Horizon</b> —Lovely blue, similar to above	.....	.30	.45	.75	4.50

	Beautiful German Iris	3	6	12	100
<b>Ambassador</b> —Lavender, falls purple	.....	\$.40	\$.70	1.10	\$1.10
<b>Gold Imperial</b> —Chrome yellow	.....	.40	.70	1.10	1.10
<b>Opera</b> —Reddish purple, falls violet	.....	.40	.70	1.10	1.10
<b>Susan Bliss</b> —Deep rose pink	.....	.40	.70	1.10	1.10
<b>White Knight</b> —Pure white	.....	.40	.70	1.10	1.10

**PEARL CHIPS**—Highly polished chips, color fast. Ideal for growing bulbs in water. Mixed colors. 25c lb. postpaid.

## BULB BOWLS

Glazed dark blue, green, light blue and yellow. 6-in. 35c each; 7-in. 40c each; 8½-in. 50c each; 10-in. 60c each. Postpaid.





# Your Home Plant Bulbs

**JONQUILS**—Highly prized for their delightful fragrance. Splendidly adapted for planting borders and for naturalizing.

	1	6	12	100
Single—Sweet scented rich yellow..	\$.10	\$.50	\$.85	\$6.00
Double—Rich yellow fragrant.....	.10	.50	.85	6.00

**LILIUM CANDIDUM (Madonna Lily)**—Popular old fashioned lilies with waxy white petals and heavy yellow stamens. Delightfully fragrant. Prefer sandy soil and sunny location. Each 35c; 6 for \$1.90; 12 for \$3.50.

**NARCISSUS**—The cheerful, bright blooms of the Daffodils or Narcissus will greet you with joy this spring. They are easily grown. Excellent for outdoors, for early spring beds, borders, and lawn, or for naturalized plots. Do well in pots or boxes in the house during the winter. Their graceful form, beautifully shaped trumpets and cups, and the long, straight stems have made them favorites for cut-flowers.

**Culture.** For outdoors, plant 6 to 8 inches apart at a depth of 4 to 5 inches, in deep, well-worked soil. If your soil needs enrichment. Bonemeal is an excellent and safe fertilizer to use. For home-decoration, plant three or four bulbs in each pot. They should be well watered and stored in a cool, dark place for several weeks while developing root-growth.

	1	6	12	100
Emperor—Primrose perianth, rich full yellow trumpet .....	\$.10	\$.50	\$.90	\$6.00
Paper Whites—Pure white, fragrant beautifully formed flowers	.06	.30	.50	3.50
King Alfred—Golden yellow perianth and trumped, fringed.....	.15	.80	1.50	11.00
Grand Soleil d'Or—Yellow paper white .....	.10	.55	1.00	7.50
Sir Watkins—Primrose perianth, golden yellow cup .....	.10	.55	1.00	7.50

Mrs. E. H. Krelage—Known as the White King Alfred. Pure white .20 1.10 1.95 14.00

**Ixias**—Small plants with clusters of single star shaped, two colored flowers on long stems. In mixed colors. 6 for 35c; 12 for 60c; 100 for \$4.25, postpaid.

**Anemones**—Mixed. Spring flowering with large beautiful blooms. Roots should be soaked over night in lukewarm water before planting. Plants prefer partial shade. 6 for 40c; 12 for 60c; 100 for \$4.65, postpaid.

**Oxalis**—Mixed. Small plants with clover-like foliage and single blooms. Mixed. 6 for 35c; 12 for 60c; 100 for \$4.65, Postpaid.

**Scillas**—Small bell-shaped blooms on long spikes. Plant prefers sunny location and well drained soil. 6 for 30c; 12 for 75c.

**RANUNCULUS**—Dwarf spring flowers deserving more extensive use. The blooms are fully double and appear in many bright colors and combinations.

	1	6	12	100
Mixed—All colors .....	\$.08	\$.40	\$.65	\$4.25

**SNOWDROPS (Galanthus)**—Everybody knows the Snowdrop, with its little white bells coming through the snow very early in the Spring. Especially attractive if planted with Scilla. Height five inches.

	6	12	100
Pure White .....	\$.50	\$.80	\$5.25

**DARWIN TULIPS**—Combine immense size with perfection of bloom. The beautifully outlined, deep, cup-shaped flowers, with petals of unusually heavy substance, are carried on stiff, erect stems, 2 or more feet high.

**Culture.** In the South, Tulips should not be planted until November or December, when the weather and soil are more uniformly cool. Plant 5 to 6 inches deep, 6 inches apart. Use bonemeal as a fertilizer, two to three handfuls to a square yard, thoroughly mixed with the soil.

	3	6	12	100
Blue Aimable—Bright Violet purple shaded steel blue, large.....	\$.45	\$.60	\$1.00	\$6.25
Clara Butt—Salmon rosy pink.....	.30	.45	.75	5.00
Farncombe Sanders—Fiery rose scarlet with white center.....	.40	.50	.85	5.75
Pride of Haarlem—Bright rose, suffused with purple, large.....	.40	.50	.85	5.75
Wm. Pitt—Glowing salmon scarlet	.45	.60	1.00	6.25
Yellow Giant—Deepest yellow.....	.45	.60	1.00	6.25
Zwanenburg—Pure white .....	.50	.70	1.20	7.00
Darwin Mixed—Large blooms, superb mixture .....	.30	.45	.75	5.00



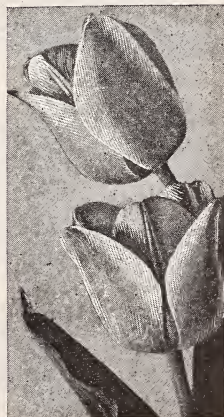
King Alfred



Paper Whites



Anemones



Tulips

*"For Those Who Want the Best"*

# ROSES

All Varieties  
Grafted, 35c each; 3 for \$1.00, postpaid.  
Own Root, Bush Varieties Only  
25c each; 5 for \$1.00, postpaid.

## STECKLER'S EVERBLOOMING BUSH ROSES

All two-year field grown vigorous plants

Set out roses early in a well prepared bed. The soil must be well drained and well fertilized. Apply fertilizer to the top of the soil. Plant early for the best results. Vigoro is the perfect rose fertilizer.



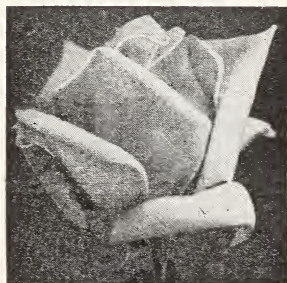
Kaiserin Auguste Viktoria



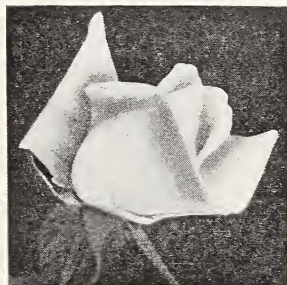
Set No. 3  
10-12 rose bushes  
for season

**ACME  
SCIENTIFIC  
ROSE  
SPRAY**

A spraying system for rose and flower garden protection. A size for every user.



Luxemburg



Pink Radiance

## BUSH VARIETIES

### WHITE HARDY GARDEN ROSES

**KAISERIN AUGUSTA VICTORIA (H. T.)**—Pure white, with shadings of primrose-yellow.

**WHITE MAMAN COCHET**—A sport from Maman Cochet, with creamy-white flowers faintly tinged with blush.

### YELLOW HARDY GARDEN ROSES

**SUNBURST**—The color is orange-copper or golden-orange and golden-yellow; edge of petals lighter, all intense shades, extremely brilliant in effect. It is the yellowest of all Roses in the everblooming class.

**LUXEMBOURG (T.)**—Pale, lemon-yellow, deepening in the center of its perfectly formed fragrant flower. Moderate growth and bloom. One of the hardiest and most beautiful Tea Roses; best in autumn.

**LADY HILLINGDON (T.)**—Buds of remarkable quality and elegance, of good size, opening into handsome flowers of clear apricot yellow. Plant relatively hardy, of much vigor, and with an autumn-blooming habit.

### PINK HARDY GARDEN ROSES

**RADIANCE (H. T.)**—Brilliant rose-pink buds, opening to well-formed shining flowers with lighter tints on the reverse of the petals; globular in shape and very fragrant. The plant makes splendid growth, has wonderful blooming qualities.

**MRS. CHARLES BELL**—It may be described as a shell-pink Radiance, and is a sport of that well-known Rose. It has no characteristics which make it distinct from Radiance except that it is shell pink.

**MAMAN COCHET**—This is the famous Pink Cochet. Light pink shaded with salmon-yellow, outer petals splashed with bright rose; extremely large and full.

**ANTOINE RIVOIRE (H. T.)**—Called by the trade Mrs. Taft. Rosy-flesh on yellow ground.

**BRIARCLIFF (H. T.)**—Bud one-third longer than Columbia, very large, long pointed flower  $4\frac{1}{2}$  inches across, high center, lasting, moderate fragrance, deep rose-pink at center, passing to lighter on outer petals.

**CECILE BRUNNER (Sweetheart Rose)**—H. Poly. Small buds; blush shaded light salmon. Prolific.

### RED HARDY GARDEN ROSES

**ETOILE DE HOLLANDE (H. T.)**—Deep velvety crimson.

Vigorous. Probably the best deep red rose for the South.  
**GRUSS AN TEPLITZ (H. T.)**—Bright crimson, fiery-red center cup-shaped; semi-double; flowers in clusters; so free in bloom as to present a blaze of scarlet.

**FRANCIS SCOTT KEY**—Giant, wonderfully shaped, extremely double flowers of brilliant crimson. Especially fine in dry seasons and late in autumn.

**RED RADIANCE (H. T.)**—An even better Rose than its parent, Radiance, in habit, bearing big, globular flowers of deep rose-red on strong, individual canes which are freely produced all summer until frost.

**E. G. HILL (H. T.)**—A new Red Rose, originated by Mr. E. G. Hill. Color is a dazzling scarlet shading to deeper red. Originator claims it never turns purple. Undoubtedly a fine new red rose.

**ETOILE DE FRANCE (H. T.)**—Color a lovely shade of clear, red-crimson velvet; very fragrant.

**TEMPLAR (H. T.)**—Bud medium size; flower medium size, double globular, very lasting. Vigorous, abundant and continuous bloomer. A new forcing Rose which is making its way into the garden. Clear bright red, of exceedingly double form and with fine strong stems. Few thorns. Perfumed.

**AMERICAN BEAUTY**—The well-known red forcing Rose.

Test your soil for acidity.



# Roses Over the Garden Wall

## HARDY CLIMBING ROSES

**CLIMBING AMERICAN BEAUTY (H. W.)**—Same color, size and fragrance as American Beauty, with the addition of the climbing habit. Good foliage and better blooming qualities.

**DR. W. VAN FLEET (H. W.)**—Flowers when open run four inches and over in diameter. The center is built high, petals beautifully undulated and cupped. The color is a remarkable delicate shade of flesh-pink on the outer surface, deepening to rosy-flesh in the center.

**MARECHAL NIEL (N.)**—This is the old standby yellow Rose in the South, where it is hardy; indeed it will bloom in any garden. Immense deep golden-yellow flowers with the deepest, richest tea fragrance of all Roses.

**PAUL'S SCARLET CLIMBER (H. W.)**—Vivid scarlet, shaded crimson, makes a brilliant display for a long period of time in the garden. A wonderful climbing Rose.

**CLIMBING RED RADIANCE (Cl. H. T.)**—Exactly like the bush variety of the same name except that it is of climbing habit.

**CLIMBING WHITE AMERICAN BEAUTY (H. W.)**—A hardy disease-resistant variety; vigorous growth and great freedom of bloom.

## TRI-COLORED ROSES (Bush)

**PRESIDENT HOOVER (H. T.)**—The Rose of wonderful colors. It is remarkable for its vigorous growth and beautiful colorings. A blend of orange and pink, varying in tone from coppery-red in the bud, to glowing orange-yellow at the base of the petals, suffused with vivid rose pink.

**TALISMAN**—It is a combination of shadings of gold, apricot, yellow, deep pink and old rose. The bud is long, well formed and develops into full double flowers. The plant is a strong grower, with glossy green foliage and free flowering.



Paul's Scarlet Climber

## FERTILIZERS AND PLANT FOODS

PRICES ON FERTILIZERS ARE F. O. B. NEW ORLEANS EXCEPT WHERE NOTED

**VIGORO VICTORY GARDEN FERTILIZER**—A complete plant food. Recommended highly for lawns, gardens, flowers, shrubbery, and trees. Clean, odorless, and easy to apply. 5 lbs. 50c; 10 lbs. 80c; 25 lbs. \$1.40; 50 lbs. \$2.25. Quantity prices freight paid: 100 lbs. \$3.50; 2,000 lbs. (ton) \$60.00.

**SHEEP MANURE (Wizard Brand)**—Pulverized. Natural concentrated weedless manure. Supplies humus and plant food to the soil. 2 lbs. 20c; 5 lbs. 45c; 10 lbs. 60c; 25 lbs. \$1.00; 50 lbs. \$1.50; 100 lbs. \$2.50.

**FINE RAW BONE MEAL**—10 lbs. 50c; 25 lbs. \$1.00.

**HYPONEX**—Food, drink and medicine for plant life. With Hyponex, plants grow luxuriantly and develop sturdy growth regardless of the poorness of the soil. No greenhouse, small or large, should ignore the extra results which can be obtained by the use of Hyponex. 3 oz. 25c; 1-lb. can \$1.00.

**MILORGANITE**—Milorganite contains all the elements needed to promote plant growth, contains more iron, magnesium, copper, manganese, zinc, boron, etc., than ordinary fertilizers. Easy to use—high in purity—easy to apply even on a windy day. It does not blow away nor cling to vegetation. 25 lbs. \$1.00; 50 lbs. \$1.75; 100 lbs. \$3.00.

**SUPERPHOSPHATE 20%**—Beneficial to all crops. Apply 300 to 500 lbs. per acre. 10 lbs. 40c; 25 lbs. 55c.

**ALUMINUM SULPHATE**—Used to change your soil to acid reaction and broadcasted over surface at rate of 1 to 2 pounds to each square yard of ground. Use Aluminum Sulphate for Azaleas to make them beautiful. 5 lbs. 25c; 25 lbs. 90c; 50 lbs. \$1.50; 100 lbs. \$2.50.

**MANGANESE SULPHATE**—1 lb. 15c; 10 lbs. \$1.00, not prepaid.

**NITRATE OF SODA**—Provides nitrogen in a form that is immediately available to plants. For forcing vegetables, flowers, fruit, etc. Use with care. 500 lbs. per acre. For liquid fertilizer use one ounce to a gallon of water. 100 lbs. \$2.50. (For food crops only.)

**SULPHATE OF IRON (Copperas)**—1 lb. 10c; 5 lbs. 40c; 10 lbs. 75c.

**ADCO**—Mixed with leaves, cuttings, vines, weeds, straw, cornstalks, etc.—in fact almost any nonwoody vegetable material—ADCO turns it into true organic manure, fully equal to plant food and fertilizing power in the old fashioned kind, but clean, sanitary, odorless and free from weeds. 7 lb. bag \$1.00, not prepaid; 25 lb. bag \$2.25, not prepaid.

FERTILIZER SCARCE. WRITE FOR PRICES ON LARGER QUANTITIES.

**PEAT MOSS**—You, too, can have a beautiful lawn and garden if you use Peat Moss, nature's finest soil conditioner. This miracle maker of humus puts millions of tiny soil sponges to work, providing soft, loose, fertile soil that allows air circulation and the penetration of the sun's rays. It stores plant food that would otherwise be washed away and wasted. ½ bale \$2.00; standard bales \$3.75 per bale; F.O.B. New Orleans.

**SERVALL**—Two grades, fine and coarse. Per bale \$1.35; 3 bales \$4.00; F.O.B. New Orleans.



# Plant Fruit Trees

## Grape Vines, Budded Fruit and Nut Trees

Orders taken for December, January and February delivery. Recommend shipments by express.

**FINE APPLES**—Apples are fast increasing in favor here in the South and every home orchard should have several varieties for a full season's supply.

Early Red Bird, Early Harvest, and Delicious—3 to 4 ft. 75c each; \$7.50 per dozen.

**APRICOT**—Fruit of the Apricot is similar in shape to the Peach, except that it is not downy and is almost perfectly smooth. 3 to 4 ft. 90c each; \$9.00 per dozen.

**CHERRY**—Well known favorite—Early Richmond. 3 to 4 ft. \$1.00 each; \$9.00 per dozen.

**FIGS**—Plant figs where they will not be disturbed and in rich soil, heavily manured.

Brunswick or Madonna—4 to 5 ft. 75c each; \$7.50 per dozen.

Lemon or May—3 to 4 ft. 65c each; \$6.50 per dozen.

Celeste—2 to 3 ft. 50c each; \$5.50 per dozen. 4 to 5 ft. 75c each; \$7.50 per dozen.

Japanese or Violet—3 to 4 ft. \$1.00 each; \$10.00 dozen.

**MULBERRIES**—They form economic food for poultry and swine and to keep birds away from other fruit. 4 to 5 ft. \$1.75 each; \$7.50 per dozen.

**ORANGE TREES**—In planting an orange grove, it is poor business to plant cheap trees. Orange trees to prove vigorous and prolific should have large, well formed root systems and strong, clean, healthy tops one or two years old. Our trees are grown on loose sandy loam lands, which permits the root systems to develop properly.

Louisiana Sweet, Washington Navel, Mandarin, Satsuma and Duncan Grape Fruits—3 to 4 ft. 85c each; \$8.50 per dozen.

**KUMQUATS**—The smallest of the citrus fruits. 3 to 4 ft. 85c each; \$8.50 per dozen.

**PEACHES**—The most popular fruit tree planted in the South and by far the most satisfactory and easiest grown. No orchard is complete without several popular peaches. Belle of Georgia, Chinese Cling, Elberta, J. H. Hale, Crawford's Early, Mayflower and Best May—3 to 4 ft. 65c each; \$6.50 per dozen.

**PEARS**—Favorites of any home orchard where a variety of fruits is desired. From the small sugar, juicy varieties to the large hard-cooking kind, our soils are adapted to their culture. The "Pineapple" variety is practically blight proof and is well adapted for growing in blight regions. Leconte, Bartlett, Kieffer's Pineapple or Sand Pears—4 to 5 ft. 85c each; \$8.50 per dozen.

**POMEGRANATE**—Spanish Ruby—Fruit very large. 3 to 4 ft. \$1.00 each; \$10.00 per dozen.

**PERSIMMONS (Tane-Nashi) (Japanese)**—Large, smooth, conical, orange to bright red and of highest quality. Vigorous and productive. 3 to 4 ft. 75c each; \$7.50 dozen.

**PLUMS**—Wide choice in following varieties: Abundance, Kelsey, Burbank and Bruce—4 to 5 ft. 75c each; \$7.50 per dozen.

**QUINCE**—Not difficult to grow and have an abundance of fruit. Always a paying crop. 3 to 4 ft. \$1.00 each; \$10.00 per dozen.

**PECANS**—In deep alluvial soils 70 feet apart each way, requiring 9 trees to an acre. In sandy, poor soils, 50 feet apart each way, requiring 17 trees to an acre. Our trees are very fine and true to kind and variety.

### A Real Money Crop

Stuart, Van Deman, Success, Frottscher's	Eggshell	Schley
Each	Per 10	Per 100
4 to 5 ft.....	\$1.00	\$ 8.50
5 to 6 ft.....	1.10	9.50
6 to 7 ft.....	1.50	12.00
7 to 8 ft.....	2.00	18.00
8 to 9 ft.....	2.50	24.00
9 to 10 ft.....	3.50	32.50

**FINEST GRAPES—FOR ALL PURPOSES**—White Niagara, Scuppernon, Campbell Early, Concord and Heribmont (McKee)—50c each; \$5.00 per dozen.

### STECKLER'S STRAWBERRY PLANTS

Ready October 10th

Missionary, Klondyke, Aroma, Lady Thompson

No. of Plants	25	50	100	1000
Prepaid	\$ .50	\$ .85	\$1.25	
Not Prepaid				\$4.50
<b>Everbearing Progressive</b>				
Prepaid	.85	1.35	2.25	
Not Prepaid				12.00



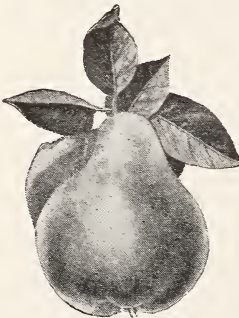
Early Harvest



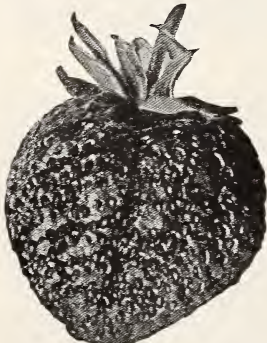
Elberta Peach



Bartlett Pears



Quince



Strawberry

# TRY SOME OF THESE



**PLANTABS**—Concentrated, Complete, Balanced Plant Food Tablets—Now contain Vitamin B<sub>1</sub> in proper, effective, measured amount. Postpaid, 30 tablets 25c; 75 for 50c; 200 for \$1.00; 1,000 for \$3.50.



Made from soft and select hides. Used for driving, household and gardening. Gives full protection and comfort. Ladies' sizes only. Small, medium and large.

\$1.00 per pair.

## SEEDERS

**CYCLONE**—Easily adjusted. Sows any seed. \$2.50 postpaid.

**CAHOON**—For broadcasting alfalfa, grains, etc. Bag and hopper holds about 22 quarts of seed. \$4.65 postpaid.

**PEERLESS GLAZING POINT**—The most durable, reliable and cheapest in the market. Made of steel wire, two points, they never bend in the middle when driven or work out by wear. Sold in boxes of 1,000 which will glaze 500 lights of glass. \$1.00 per 1,000, postpaid.

**POTS (Flower)** F.O.B. New Orleans. Red Clay Pots—We pack these carefully, but will not be responsible for breakage.

	Each	12	100
2 1/2 in.....	\$.02	\$.23	\$1.40
3 in.....	.03	.29	1.90
4 in.....	.04	.40	3.00
5 in.....	.06	.70	4.60
6 in.....	.09	.95	6.35
7 in.....	.15	1.65	12.00
8 in.....	.23	2.40	
9 in.....	.30	3.00	
10 in.....	.42		
12 in.....	.85		

11/16" x 4" - 5" - 6" - 8"

Wooden—For pots, painted.

	100	1000		100	1000
4-in. ....	\$.30	\$2.25	6-in. ....	\$.40	\$2.75
5-in. ....	.35	2.45	8-in. ....	.45	3.35

11/16" x 3 1/2"

Tree, Copper Wired—3 1/2 in. 100, 35c; 1000, \$2.45.

**Copper**—Indestructible. Tree and shrubbery, copper wired. Small, 30c doz.; 100, \$1.85.

**Perma Labels**—Improved type, all one piece all metal labels. 100, 75c; 500, \$3.25; 1,000, \$6.00.

**Stylus Pencil**—For marking Copper and Perma Labels, 40c each.

# ROOTONE

Reg. U. S. Pat. Off.

**ROOTS CUTTINGS—GERMINATES SEEDS—STIMULATES BULBS—KILLS FUNGI—STOPS WILT AND DAMPING OFF—INCREASES PLANT GROWTH**

Safe—Simple—Sure

1/4 oz. pkg. 25c; 2 oz. \$1.00; 1 lb. can \$5.00. Booklet on request

**RAFFIA**—Its principal use is for tying vines, flowers, asparagus and celery bunches and for grafting. Natural color is a light straw. 1 lb. 60c; 5 lbs. \$2.50, postpaid.

## SHEARS

Snap Cut .....	\$2.25
Hy-Power .....	1.50
Ladies' 7 in. ....	1.65
Professional Type .....	4.80

## GRASS SHEARS

157—EZY-Cut .....	1.50
57—EZY-Cut .....	1.45

## HEDGE SHEARS

No. 415—8 in. ....	1.75
No. 415—6 in. ....	1.35
No. S43—8 in. ....	3.25

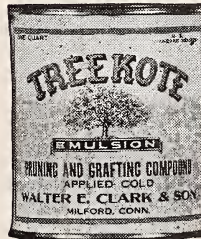
## FLOWER HOLDER

No. 615—Cut and Hold.....	1.75
---------------------------	------

## WATER'S TREE PRUNERS

F.O.B. New Orleans Only

8-ft. ....	\$2.50
10-ft. ....	3.00
12-ft. ....	3.50



**TREEKOTE EMULSION** is applied cold to all types of tree grafting and tree injury. It meets every requirement of tree surgeons, protects wound from weather conditions, insects and fungi. Treekote adheres firmly, forms a protective coating to all surfaces, and is not affected by

the hottest weather—easy to apply, economical to use. 1 pint can 35c; 1 quart can 60c; 1 gallon can \$1.75, F.O.B.



Oldest and best brand on the market. 1 lb. cake 50c; 1/2 lb. 30c; 1/4 lb. 20c; 5 lbs. \$2.25; 10 lbs. \$4.00. Postage extra.

## SOIL SOAKER

**SOIL SOAKER** for deep soaking, the water method approved by agricultural colleges and nurseries now available for home use. Equipped with regular hose connection for attaching to hose or pipe.

No. 0—12 ft., each.....	
No. 1—18 ft., each.....	\$1.90
No. 2—30 ft., each.....	2.90



# A FEW OF OUR GARDEN SUPPLIES

Descriptive Catalogue on Request



**ARNOLD'S VICTORY SPRAYER**—All plastic, usual cartridges may be used with excellent results. Price \$1.00.

Nic-O-Spray Cartridges 35c each—12 for \$4.00

Arsen-O-Spray Cart. ....25c each—12 for 3.00

Funguspray Cartridges...25c each—12 for 3.00

Sulph-O-Spray Cart.....25c each—12 for 3.00

Vitamin B<sub>1</sub> Cartridges. 25c each—12 for 3.00



**LAMOTTE IMPROVED SOIL TESTKIT** — A pocket size kit designed for the amateur gardener which enables you to test your own soil. Some plants need alkaline and some need acid. This testkit enables you to determine whether your soil is alkaline or

acid. This kit is complete with soil handbook and full instructions. Each, \$2.00 postpaid.

## DESTROY MOLES WITH MOLOGEN



Destroys them quickly. Semi-powdered form—easy to use. No odor or gases. Harmless to soil or grass. ½ lb. can, 50c.



Repels dogs and ants—kills many soil insects—rids the home of ants.

Handy shaker cans—  
Patents Pending Price, 50c.

## FUME-OGEN

## TRANSPLANTONE

Reg. U. S. Pat. Off.

The vitamine-Hormone stimulant. One ounce makes 1,000 gallons solution. Most effective form of Vitamin B<sub>1</sub>. Use on all kinds of flowering plants, shrubs, seedlings, trees and vegetable plants when planting.

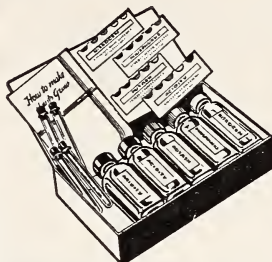
1 oz. 50c; 3 oz. \$1.00; 1 lb. \$4.00.

## FRUITONE

REG. U. S. PAT. OFF.

The hormone spray. Stops pre-harvest drop of fruits. Contains the same chemicals found by the U. S. Dept. of Agriculture to be most effective. Holds fruit on the tree to maturity of size and color.

2 oz. \$1.00 (makes 25 gal. spray); 12-oz. can, \$5.00; (makes 150 gal. spray).



## THE SUDBURY HOME GARDENERS SOIL TEST KIT.

This simple practical easy-to-use kit is your best insurance of gardening success. Made by the maker of professional

field test kits used by nurserymen, growers and greenkeepers throughout the country. Tests for nitrogen, phosphorus, potash and acidity. It will make at least three separate tests for each element. No technical skill required. Results of tests are apparent immediately. The Sudbury Home Gardeners' Soil Test Kit, complete with instructions and data on plant needs, \$2.00.

## VITAMIZE your garden

### VITAMIN B-1

Add this vital growth factor to your regular garden routine and your flowers will respond amazingly with vigorous, new healthy growth.

### Thompson's VITAMIN B-1 PELLETS AND SHAKE-A-DROP BOTTLE



Thompson's research laboratories make it easy to apply B-1. Just dissolve pellet in Shake-A-Drop Bottle, shake into sprinkling can and apply. Fool-proof, no guess-work. Box of 100 Pellets (makes 2000 gals.), Shake-A-Drop Bottle and full directions

\$1  
25¢

Trial box of 10 Pellets and Shake-A-Drop Bottle . . .

WHY, JANE, TOMATOES ALREADY! HOW COME?

EASY... I USE HOTKAPS!

## How Hotkaps help you grow Earlier, Hardier Vegetables, Flowers

Do as successful market growers do: Place patented Germaco HOTKAPS—strong little hothouses—over seeds (or over plants when transplanting). Completely protect from destructive frosts, storms, insects—maintain perfect mulch. Increase yield from 18 to 51 per cent, ripen plants three weeks earlier. Quick, easy to set, instructions on package. 25 Hotkaps 50c; 250 for \$3.50. Setter free. Beat everyone with first vegetables, flowers. Buy Germaco HOTKAPS from us today. MARKET GROWERS: GERMACO HOTKAPS help you have sure crops, highest out-of-season prices, bigger profits. 1000 for \$11.



Send for FREE FOLDER



# POULTRY REMEDIES AND SUPPLIES

## PICKPASTE

### for Cannibalism

Pickpaste is blood-colored and mixes thoroughly with blood. It is repulsive to fowls. A few tastes of it usually teaches birds not to pick at one another, unless the habit has been permitted to become firmly established. Pickpaste is greaseless and adheres well to wounds. It is antiseptic and protects the wounds from dirt. It sticks well to skin and feathers but washes readily from the hands. Pickpaste can be obtained in convenient 6 oz. jars for 60c, or 65c, postpaid.

## ACIDOX

The ACIDOX system was developed to meet an insistent demand for simple medicinal aid to help reduce weight loss and death loss from coccidiosis.

	Each	Postpaid
4-oz. bottle .....	\$.50	\$.60
12-oz. bottle .....	1.00	1.15

## PHEN-O-SAL

For fowls of all ages. Widely used for simple diarrhea and other bowel troubles. Used before worming. In tablet form. May be used in metal containers. For young chicks figure one tablet per chick. For older birds figure two tablets per bird as an average treatment for the drinking water.

25 tablets 30c; 125 tablets \$1.15, or postpaid, 35c and \$1.25.

## TALCIMIZED SODIUM FLUORIDE

It kills both old and young lice, including the young which hatch from the eggs present on the fowl at time of treatment.

	Each	Postpaid
Small size (for 40 chickens)...	\$.35	\$.40
Large size (twice as much)....	.60	.70



**DON SUNG**—Absolutely guaranteed to put your hens in good condition and make them lay more eggs.

Box, 45 tablets, 50c; large size box, 135 tablets, \$1.00, postpaid.



### For Chick Diarrhea

Avicol should be in the very first water the little chicks drink. And it will pay you to keep it in the drinking water for all the flock, old and young.

60 tablet size 50c; 180 tablet size, \$1.00, postpaid.

## GIZZARD WORM CAPSULE

Worms do not have to rob a pullet of a lot of food to lower production. Take advantage of the fact that you can now worm your laying flock with the Gizzard Capsule whenever necessary to reduce infestation.

	One Env. of 10	One Can of 50	One Can of 100
Size			
Adult (six months and older) .....	\$0.15	\$0.75	\$1.25
Pullet (four to six months of age) ..	.10	.50	1.00
Chick (three to four months of age) ..	.10	.40	.75

## FOWL POX VACCINE

Used in the prevention of pox and its various forms such as sorehead, cankers, wet pox and diphtheritic roup on all fowls. 100 dose size 85c; 500 dose \$3.35, postpaid.

## CAN-PHO-SAL

Spray and inhalant for respiratory disturbances. Used as a medicated spray or fumes. Also for individual treatments. Use for making ointment. A 16-ounce bottle diluted with water makes 2½ gallons of non-inflammable medicated spray.

Bottle Size	Bird Size	No. in Case	Retail Each
2 oz.	125	12	\$.65
4 oz.	250	12	.90

## PRATT'S POULTRY REGULATOR

Builds up vitality, promotes sound digestion, sharpens appetite, and puts birds into condition for heavy egg laying.

18 oz. pkg. 25c; postpaid, 40c.

## Group-Over GROUP-OVER

—The overnight remedy. This famous remedy gives complete, prompt and positive results.

Postpaid, 55c and \$1.10.

**BLACK LEAF 40**—Kills poultry lice. Simply paint the perches. It works while the chickens sleep. 1 oz. 36c; 5 ozs. \$1.05; 1-lb. tin \$2.50; 2-lb. tin \$3.70; 5 lbs. \$6.90; 10-lb. tin \$11.65, postpaid.

**"BLACK LEAF" WORM POWDER**—A flock treatment for round and pin worms in poultry. ¼ lb., 100 bird size, 75c; 1½ lbs., 600-bird size, \$2.90, postpaid.

**"BLACK LEAF" WORM PELLETS**—If you prefer individual dosing, use "Black Leaf" Worm Pellets. The uncoated pellets are odorless and tasteless, containing "shockless" nicotine made from the powder and highly effective. For 2 to 4-pound chickens give one-half the easily broken adult size tablet. Adult size, doz., 15c; 25, 25c; 50, 45c; 100, 85c; 500, \$3.50; 1,000, \$6.50, postpaid.

## GERMOZONE

Germozone twice a week in the drink destroys disease germs taken in with the food or water. Corrects and prevents diarrhea and bowel troubles. Also cures roup, colds, cankers, swelled head and such disorders.

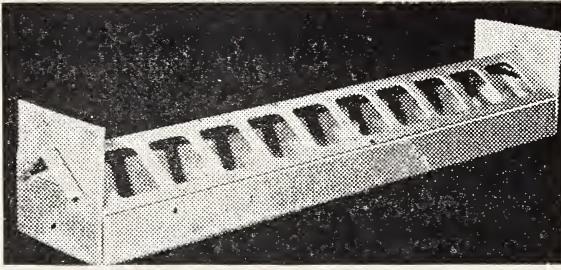
Lee's Germozone Liquid Each Postpaid  
4-oz. bottle....\$.40 \$.50  
12-oz. bottle.... .75 .90  
32-oz. bottle  
(not mailable) 1.50 1.60



# POULTRY EQUIPMENT

**ADMAT**  
CHICK FEEDER  
**ADMAT**

**ECONOMICAL—SANITARY—  
PRACTICAL**

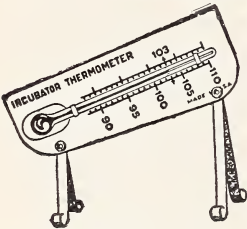


Admat Chick Feeders are made from high grade wood pulpboard. They are so inexpensive they can be used for one hatch of baby chicks, and then be discarded.

18 in. 15c at store; 20c postpaid.

**WOODEN CHICK FEEDERS**—Similar to the galvanized, with reel. 12 to 18 in. long. 60c postpaid.

## THERMOMETER



No. 523

Large brooder thermometer. White enamel.

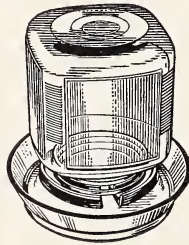
No. 523, 50c, postpaid.

Small dial brooder thermometer; 4½ inch back. White enamel.

No. 414, 40c, postpaid.



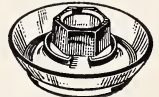
## CRYSTAL GLASS CHICK FOUNTS



**ONE GALLON  
CAPACITY**

Complete with base  
At store 80c, or  
\$1.00 prepaid

**FEATURES:** Visible water supply at all times . . . safe for medicines . . . rust-proof and noncorroding . . . labor-saving . . . sanitary and easy-to-clean . . . bubbling water attracts attention of chicks . . . promotes greater water consumption.



**QUART JAR . . . all-glass Mason pan (base). Easy to clean and handle.**  
At store 15c, or  
25c prepaid

**FOR HOME MADE BROODERS**—Lamp bowl made of glass with ordinary house burner and chimney, similar to the household lamp without a foot. Furnishes sufficient heat to take care of 50 chicks. Holds one pint oil. No. 2 burner. Price at store 45c; postpaid, 55c



**STECKLER'S  
DAY OLD  
CHICKS**

**NONE BETTER**  
We guarantee 100% live chicks. We can furnish most all breeds. Write for prices. Last season we sold over 150,000 chicks to satisfied customers.

## LAMPS AND BURNERS

**NO. 83 LAMP WITH NO. 3 ZENITH BURNER AND WICK. \$2.35 postpaid.**

**NO. 82 LAMP WITH NO. 2 HUDSON BURNER WITH WICK, \$1.85 postpaid.**

Ideal for home made brooders.

**AGICIDE DUST**—Contains Rotenone—Controls sucking and chewing insects, such as Cabbage Worms, Bean Beetle, Tarnish, Potato Bugs and Aphids (plant lice) which destroy fruits, vegetables and flowers. 5 lb. pkg. \$1.25, or Postpaid \$1.35.



# STECKLER'S INSECTICIDES ARE THE BEST

**ACME GARDEN GUARD**—A garden insecticide and fungicide for use as a dust. No water, no mixing, no muss.

For use on cabbage, cauliflower, tomato plants, melon vines, currants and gooseberries and other vegetables, flowers and shrubs of many kinds. Price: 1 lb. sifter-carton 40c; 4 lb. bag \$1.35 postpaid

**ACME PARIS GREEN**—A rich, emerald color and of fine, fluffy physical character. Containing 55% arsenious oxide, it will give quickest control where extreme measures are necessary.

For use on potatoes, cotton, tobacco, also to mix with Arsenate of Lead for fruit tree spraying where quick results are necessary. Price:  $\frac{1}{4}$  lb. 25c; lb. 50c; 5 lbs. \$2.35 postpaid.

**ACME APHIS SPRAY**—An improved nicotine spray combining a soft fish oil soap with Black Leaf 40, suitable for the control of all kinds of aphids (plant lice), thrip, leaf hopper and many more hardy insects infesting rose bushes, flowers, shrubs, vines, bushes and trees. Mixes easily with any kind of water. Complete directions found with every package. Price: 3 oz. collapsible tube 35c postpaid.



**BLACK LEAF "40"**—Excellent for killing plant lice. 1 oz. bottle 36c; 5 oz. bottle \$1.05; 1 lb. \$2.50; 2 lbs. \$3.70; 5 lbs. \$6.90; 10 lbs. \$11.65 postpaid.

**RED ARROW GARDEN SPRAY**—Kills many varieties of both sucking and chewing insects on vegetables, flowers, fruits. Red Arrow is a highly concentrated pyrethrum extract, containing soap. Non poisonous. Use as directed. Will not injure foliage. Oz. 35c; 4 oz. \$1.00 postpaid.

**APHINE**—Spray for green, black and white fly, red spider, thrip, mealy bug, white and brown scale. Prices: 40c per  $\frac{1}{2}$  pint; 65c per pint; \$1.00 per quart; \$3.00 per gallon postpaid.

**ACME LIME SULPHUR**—A standard 33° Beaume lime and sulphur converted into a dry powder but having all the effectiveness of the liquid product when dissolved in water.

For use in dormant spraying against scale, peach blight, leaf curl and twig borer. Summer spraying against scab, soot, blotch, red spider and mite. Mailable. Price: 36c lb.; 5 lbs. \$1.50, postpaid.

**DUSTING SULPHUR**—20c per lb. 3 lbs. for 45c. Write for prices on larger quantities.

**NEW EVERGREEN SPRAY**—New, simplified insect control—kills both chewing and sucking insects. Deadly pyrethrum content; harmless to plants, men, and animals. Easy to use. Leaves no poisonous residue. Oz. 35c; 6 ozs. \$1.00; 16 ozs. \$2.00 postpaid.

**ELECTRIC SPRAY, WETTABLE SULPHUR**—Rust mite, red spiders, black spots and fungous diseases. Full directions on package. 4 lb. pkg. 60c, postpaid.

**ACME BAIT-M**—An effective insecticide bait which will throw a ring of protection around shrubs, flowers and plants in garden and lawn.

For use against snails, cutworms, sowbugs, grasshoppers, and many other insects which migrate along the ground. Price: lb. 40c; 3 lbs. 85c postpaid.

**ACME ARSENATE OF LEAD**—The most favored arsenical insecticide found on the American market. It is safest to use on tender foliage and sticks well on the leaves. Recommended for fruit trees, vegetables, bushes and tobacco. Can be used as dust or spray. Price:  $\frac{1}{2}$  lb. 20c; lb. 35c; 4 lbs. 85c postpaid.

**ACME BORDEAUX MIXTURE**—Prevents large losses caused by blight, rot, mildew, scab, anthracnose and certain other fungous diseases. It stimulates plant growth and greatly increases the harvest. Almost every kind of vegetable, fruit and shrub can be greatly improved by the early use of Bordeaux Mixture. Price: lb. 35c; 4 lbs. 85c postpaid.

**FISH OIL SOAP**—Destroys lice on house plants, mealy bugs, scale on palms and San Jose scale. Lb. 40c postpaid.

**TOBACCO DUST**—If dusted on the foliage it destroys rose lice, cabbage and turnip fleas. Lb. 20c; 5 lbs. 50c; 10 lbs. 90c; 50 lbs. \$2.00, not prepaid.

**TOBACCO STEMS**—Boil down to strong solution or strew around plant root for leaf eating insects, aphids, etc. Prices: 25c per lb., postpaid; \$2.50 per bale (about 100 lbs.), not prepaid.

**CALCIUM ARSENATE**—Used for boll weevil in cotton.  $\frac{1}{2}$  lb. 15c; 1 lb. 25c; 4 lbs. 55c, postpaid. Write for quantity prices.

**VOLCK**—Recommended for plants of all kinds for the destruction of scale insects. White fly, red spider, and other insects. Highly recommended for insects on citrus fruits of all kinds. Prices:  $\frac{1}{2}$  pint, 40c; quart 80c; gallon \$2.25 postpaid.

**ACME KOPFER QUEEN LIQUID MILDEW SPRAY**—For controlling mildew, leaf spots and black spot on rose bushes, flowers and many other kinds of foliage. Stainless—leaves a thin film of copper, preventing fungus attack, without any drawback of unsightly residue. 8 ozs. 35c each; pint, 60c; quart, 90c.

**POMO-GREEN with Nicotine**—Control diseases, leaf eating insects, aphids, etc., with one material. This can be either dusted or sprayed on. 1 lb. can 80c; 5 lbs. \$3.10 postpaid.

**SNAROL**—An insecticide bait to combat snails, cutworms, sow bugs and grasshoppers. Price: 1 lb. 25c;  $2\frac{1}{2}$  lbs. 50c; 6 lbs. \$1.00.

## "DOGZOFF"

If you are bothered with dogs, cats or rabbits, "Dogzoff" is the spray you need. It is a most efficient animal repellent and one spraying will last from three to four weeks. Not poisonous to plants and will not injure animals. Not offensive to humans. Its use is guaranteed to keep these animals from any place where they are not wanted.

"Dogzoff" is applied with any small insect sprayer and one application does the work. "Dogzoff" will save its cost many times over around the garden and home. Season's supply, 60c postpaid.

# TRI-GEN

Reg. U. S. Pat. Off.

The all-purpose spray

### ROSE GARDEN SPRAY TREATMENT

Positive protection against all Insects and Diseases

TRI-GEN gives complete protection against all plant insects and diseases, including black-spot, mildew, aphid (plant lice), slug worms, caterpillars, etc.

The stimulating value of TRI-GEN promotes vigor and growth, healthy green foliage, with resulting luxuriant blooms.

Especially recommended for roses, asters, snapdragons, carnations, hollyhocks, delphiniums, phlox, chrysanthemums, zinnias, golden glo, dahlias, and many other plants. Small kit (makes 16 quarts) prepaid \$1.50

Protects 12 to 20 roses for season.

Medium kit (makes 64 quarts) prepaid 4.00

Protects 50 to 80 roses for season.





## PLANT STECKLER SEEDS

*Can or  
Dry*

*Your Winter's  
Supply*

