

CA2 ALID 15
1961C15

ALBERTA LEGISLATURE LIBRARY



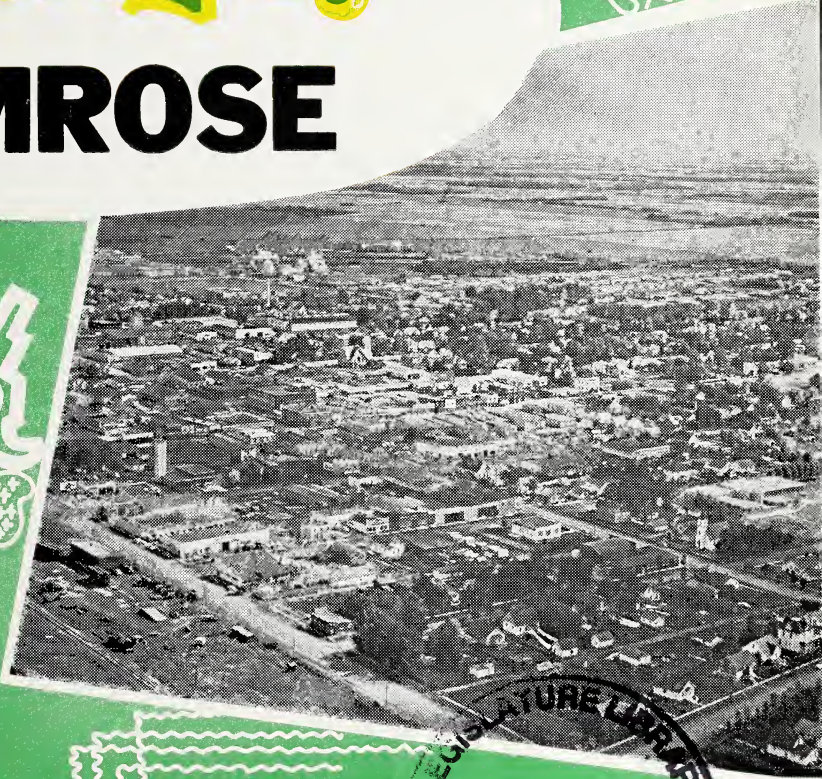
3 3398 00409 3471




Survey of

DEC 4 1961

CAMROSE



Prepared By
INDUSTRIAL DEVELOPMENT BRANCH
DEPARTMENT OF INDUSTRY & DEVELOPMENT
Government of the Province of Alberta



Digitized by the Internet Archive
in 2017 with funding from
Legislative Assembly of Alberta - Alberta Legislature Library

City of Camrose

(Revised, May 1961)

1. LOCATION

Section 2-47-20-W4 in Census Division No. 10. This location is 26 miles east of Wetaskiwin on Highway No. 13 and on the Edmonton-Camrose-Drumheller-Calgary line of the C.N.R.; the Camrose-Tofield line of the C.N.R.; the Edmonton-Camrose-Alliance line of the C.N.R.; the Camrose-Vegreville line of the C.N.R., and the Edmonton-Saskatoon-Winnipeg line of the C.P.R.

2. ALTITUDE

2,430 feet. Latitude - 53/01. Longitude - 112/50.

3. TEMPERATURE

Mean summer temperature - 53° F.

Mean winter temperature - 18° F.

Mean yearly temperature - 36° F.

4. RAINFALL

Average rainfall - 12.10 inches.

Average snowfall - 45.8 inches.

Average total precipitation - 16.2 inches.

5. GEOLOGY

The area is underlain by non-marine rocks of the Edmonton Formation (Upper Cretaceous) which consist of bentonitic sandstone, shales, thin seams of bentonite and coal seams. The Edmonton Formation is underlain by marine shales of the Bearpaw Formation also of Upper Cretaceous Age. There is a thin cover of clay and boulders at the surface which was deposited by the last glacier to cover this area. Glacial meltwaters were channeled through a deep valley a few miles south of Camrose (Dried Meat Lake) and this channel contains a large quantity of glacial gravel on high level benches on the valley sides.

6. SOIL

Camrose is in the black soil zone.

Climate

Annual precipitation averages between 17 and 19 inches and droughts are rare. Evaporation is lower and hot winds less frequent than in other zones.

Vegetation

Grassland which has been partially invaded by woodlands (mainly deciduous trees) often referred to as a parkland.

Soil Profile

The normal profile has a very black to very dark brown surface (A) horizon that averages about 12 to 14 inches in depth. The (B) horizon is brown to dark brown and the lime layer (Bca) is usually found 30 to 40 inches below the surface.

Fertility

Soils in this zone are the most fertile in the province and they have in their surface foot 3 to 4 times as much nitrogen and organic matter as there is in the average brown or grey wooded soil. Every precaution should be taken to see that they are not allowed to deteriorate.

Land Use

A high percentage of the zone is arable. Wheat of fairly good quality can be grown but mixed farming, including the use of fertilizer when needed is most desirable from the standpoint of both profit and permanence.

7. HISTORY

The City of Camrose was originally the Hamlet of Sparling, so named after the Rev. Dr. Sparling of Winnipeg. It was incorporated as the Village of Sparling on May 4th, 1905, and was incorporated as the Town of Camrose on December 11, 1906. Camrose was incorporated as a city on January 1, 1955.

In June 1905 the railway grade was completed between Wetaskiwin and Sparling and a mixed train operated between Wetaskiwin and the village three times weekly.



Camrose city hall is located in the downtown area

The first school was opened in the Presbyterian Church in 1905 and the first school building was opened on May 24, 1907.

The first church service was conducted in a shack by the Rev. Thomas Philips, a Methodist minister, and the first church to be built in the area was of the Lutheran faith.

Prior to the arrival of the railway all goods had to be freighted from Wetaskiwin by oxen and horses which took three days.

Camrose had electricity in 1911 when a steam electric plant was erected. This plant was taken over by the Calgary Power Company in 1929.

8. LIVING CONDITIONS

The city lies in the valley through which flows Stoney Creek on its way to join the Battle River. The main streets are wide and kept clean. New modern stores show the prosperity of the district. The residential area is well treed and the homes have flowers and vegetable gardens. Excellent facilities for both winter and summer sports are available. Camrose is noted for its outstanding skiers. Modern schools offer courses in grades 1 to 12. The Camrose Lutheran Junior College offers first year university courses. Fifteen churches supply the spiritual needs of the community. There are 1,700 houses within the city limits, the average rent ranging from \$75 to \$100 per month.

Value of building permits:

1956	\$ 958,670	1959	\$2,081,410
1957	\$1,277,300	1960	\$2,179,700
1958	\$1,247,250		

About 85% of the homes are owner occupied.



Main street in Camrose is busy, well surfaced

9. ADMINISTRATION

The city is governed by a mayor elected for a two year term and eight aldermen, four elected each year for a two-year term. The city clerk and his staff carry out the policies set by the council. The Camrose Industrial Advisory Committee assists the city council in planning for industrial development.

10. LAWS AND REGULATIONS

The National Building Code of Canada has been adopted by the city. The electrical installation must comply with the Alberta Electrical Protection Act. Sanitary installations must comply with the Provincial Health Regulations. Gas installation must comply with the City By-Law. The police force consists of a Police Chief and ten Constables.

11. FIRE PROTECTION

There is a full time fire chief and 26 volunteer firemen who are paid for weekly practices and by the hour for fire fighting. All fire personnel are St. John's Certificate holders. There are 82 fire hydrants with a static pressure of 62 lbs. The water supply is adequate for any emergencies. Camrose has one of the best Civil Defence Units in Alberta directed by a paid co-ordinator with permanent headquarters next to the Agricultural Building.



Camrose's excellent public services include this modern firehall and equipment

Equipment: 1 Chev. La France triple combination 500 GPM pumper with 200 gal. booster tank, 1 Ford Bickle Seagrave auxiliary unit with a 250 GPM pump and a 300 gal. booster tank, 1 three ton Ford hose and ladder truck, 1 La France 500 GPM trailer pumper, all of recent make with a total of 5500 feet 2½ inch hose, 2850 feet 1½ inch hose, plus ladders, tools, helmets, coats, hand extinguishers, self-contained masks, first aid inhalator (2 persons), automatic telephone service, 24 hour alarm system and radiation equipment owned by the fire department. 1 three ton Ford La France 625 GPM pumper with 500 gal. booster tank, 1 100,000 gal. elevated tank, 1 140,000 gal. reservoir with 500 GPM gasoline fire pump, two 500,000 gal. reservoirs.

Total storage of sweet water - 1,240,000 gal.

12. TAX STRUCTURE

	Net Assessment	
	1960	1961
Land, 100% of value	\$1,391,200	\$1,430,635
Improvement, 100% of fair value	6,457,860	7,322,740
Business	237,840	280,680
Electric Light & Power	233,800	233,800
Total Assessment	\$8,320,700	\$9,267,855

Mill Rate: Municipal 26½; School 30½; Hospital 3¼. Total 60 mills

13. AREAS

Area of city - 1,870 acres.

Streets and lanes - 126 acres.

Public parks and playgrounds - 55 acres.

Miles of roads, streets and lanes:

	Bituminous	Bit. Surface	Gravel	Imp. Earth	Total
Streets and roads	4.87	9.30	16.0	2.95	33.12
Lanes and alleys			12.7		12.7
				Total	45.82

All streets and lanes are either bituminous surface or gravelled. The city owns a 50 acre gravel pit located 10 miles south of the city. The pit has a 20 foot strata of clean gravel. There are 14 miles of asphalt sidewalk and 22 miles of cement sidewalk.

14. SEWER AND WATER MILEAGE

Storm sewers - 4.60 miles.

Sanitary sewers - 24.9 miles.

Water mains - Supply 9.12 miles. Distribution 15.71 miles.

Newly enlarged sewer and water system to accommodate population of 25,000.

15. POWER

Three phase 60 cycle electric power is supplied under a ten year franchise by Calgary Power Ltd. Rates effective as of January 1, 1958.

Domestic Service

Available only for lighting, cooking, domestic power and ordinary uses in houses and apartments used exclusively for residential purposes.

First 20 KWH or less per month - \$2.30 gross minimum. Subject to 30c prompt payment discount making a \$2.00 net minimum.

All over 20 KWH used per month - 1½c net per KWH.

Note: Discount of 30c applies to all monthly bills paid within 10 days of date rendered. Connection charge of new customers - \$1.00.

Reconnection charge - \$4.00.

Commercial Service

Available where other rates listed do not apply.

Service charge - First 500 watts of installed capacity - 60c per month.

Each additional 250 watts of installed capacity - 20c per month.

Energy charge - First 50 KWH per month per KW of installation - 6c per KWH.

Next 150 KWH per month per KW of installation - 2c per KWH.

All over 200 KWH per month per KW of installation - 1½c per KWH.

Discount - nil.

Minimum charge - \$1.25 per month.

Minimum deposit - twice minimum.

Reconnection charge - \$2.50.

Power Service

A.C., available for motors, rectifiers, commercial heating apparatus, etc., in commercial establishments.

Service charge - \$1.00 per month per kilovolt-ampere (KVA) of installation, (one motor horsepower or one kilowatt in heating apparatus to be considered equivalent to one KVA).

Energy charge - First 100 KWH per month per KVA of installation - 3½c per KWH.

Over 100 KWH per month per KVA of installation - 1½c per KWH.

Discount - nil.

Minimum charge - \$3.00 per month.

Minimum deposit - \$2.00 per HP, with minimum of \$6.00.

Reconnection charge - \$6.00.

Industrial Service

Special rates for specific large industrial loads will be quoted upon request.

There are three sources of power to take care of any emergency as follows:

Bow River Basin Hydro Plants via Calgary and Wetaskiwin.

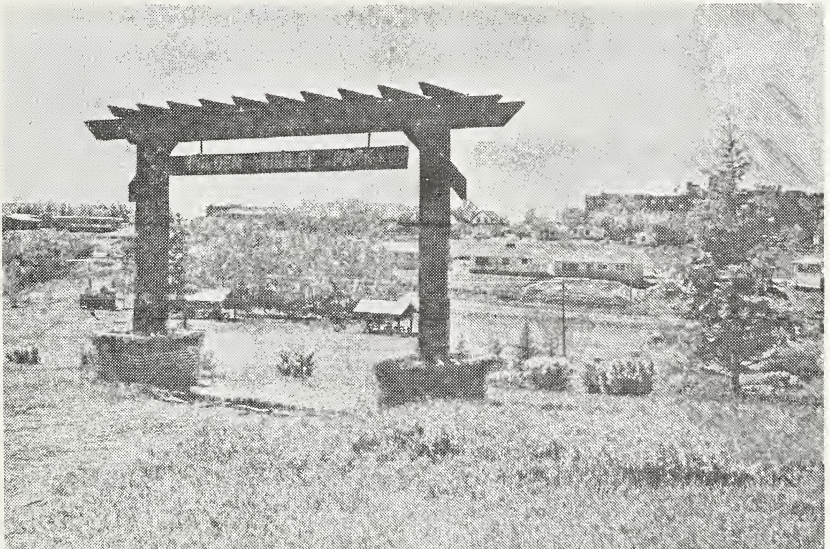
From Wabamun via Wetaskiwin or Tofield.

From Vegreville via Holden.

16. WATER

Water is supplied to the city under a franchise by Calgary Power Ltd. The city has sufficient water to meet the demand of industry as well as residential purposes. Water is now piped from Dried Meat Lake. It is filtered through 2,000 feet of sand and gravel and comes from underground streams, through the gravel bed into the supply main, and from there into two water reservoirs of 500,000 gallons each. In addition there is a third ground reservoir of 130,000 gallons and an elevated tank of 100,000 gallons.

Water Analysis	Parts per Million
Total Solids	228
Ignition Loss	88
Hardness	180
Sulphates	96
Chlorides	13
Alkalinity	15



A delightful picnic and recreation spot in the city is the Golden Jubilee Park

Nature of Alkalinity - Bicarbonate of Lime and Magnesium.

Nitrates .4

Nitrites trace

Iron .2

Remarks: This water is chemically suitable.

Rates

First 200 cu. ft. or less used per month - \$2.75.

Next 4800 cu. ft. used per month - 55c per 100 cu. ft.

Over 5000 cu. ft. used per month - 50c per 100 cu. ft.

Minimum monthly water rate - \$2.75.

Industries using large quantities of water can secure rates from the Company.

17. GAS

Natural gas is supplied to the city under franchise by Northwestern Utilities Ltd.

General Rate - Rate No. 1

Available to all customers.

First 20 therms or less - \$3.00 per month.

All additional therms - 4.3c per therm.

Minimum monthly charge - \$3.00.

When accounts are not paid on or before the due date the charge per therm, other than the first 20 therms, shall be increased by 0.3c and the gross rate so arrived at shall apply.

Optional Rate - Rate No. 2

Available on annual contract to all customers whose annual consumption is more than 11,900 therms.

Fixed charge - \$20.00 per month.

Plus commodity charge - 2.5c per therm.

Minimum monthly charge - \$20.00.

When accounts are not paid on or before the due date the charge per therm shall be increased by 0.2c and the gross rate so arrived at shall apply.

Optional High Load Factor Rate - Rate No. 3

Available on annual contract to all customers whose annual consumption is more than 100,000 therms and whose total consumption during the six meter reading periods ending in May, June, July, August, September and October, is not less than 40 per cent of their total consumption during the year.

Fixed charge - \$20.00 per month plus 22c per month per therm of maximum 12 hour demand.

Commodity charge for all consumption - 1.5c per therm.

Minimum monthly charge - fixed charge.

The maximum 12 hour demand shall be the greatest amount of gas in therms delivered in any 12 consecutive hours during the current billing period of the preceding eleven billing periods as determined by the company by measurement. The maximum 12 hour demand of a new customer of gas shall be estimated by the company. Provided that the company may with the approval of the Board of Public Utility Commissioners, take into consideration in determining the fixed charge the effect of the customer's demand for gas upon the company's peak load.

General Conditions Affecting Rate No. 2 and Rate No. 3

These rates are available only on annual contract which shall continue from year to year thereafter until either party shall give the other party at least thirty days prior to the expiration of any such year, a written notice of desire to terminate same, whereupon at the expiration of such year, it shall cease and determine.

18. L. P. GAS

Heat value - 135,000 to 140,000 b.t.u. per gal, at 60° F.

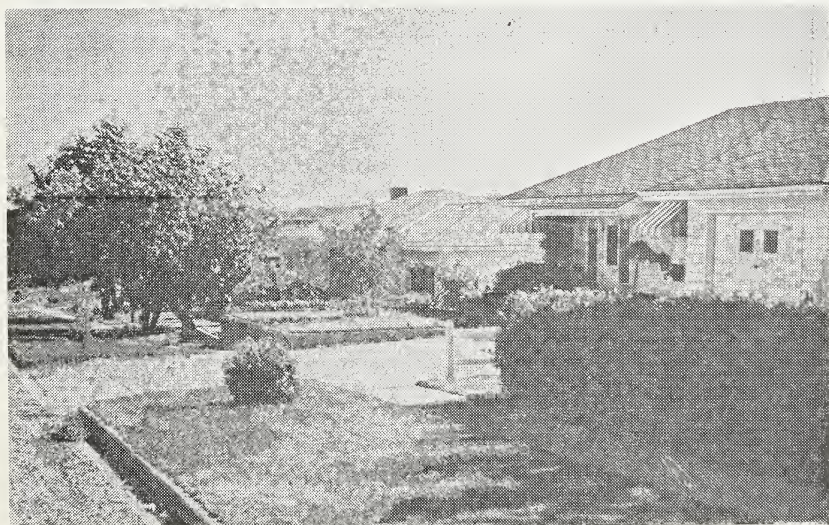
100 lb. cylinder - \$6.50

Bulk - 15c per gal.

Storage capacity - 42,000 gal.

Two bulk trucks - 1300 gal. each.

Three service trucks.



A view of one of the residential areas in the city

19. DIESEL FUEL

Heat value - 160,000 to 164,000 b.t.u. per gal. at 60° F.

Summer grade - 17c per gal.

Winter grade - 15c per gal.

Total storage capacity - 100,000 gal.

20. COAL

Coal is secured from a strip mine 5 miles east of the city. Sub-bituminous, heat value - 8,970 b.t.u.

Prices f.o.b. mine per ton: Lump \$5.00; Egg \$4.75; Stoker \$3.50; Nut \$3.50; Slack \$1.25; Rice \$2.25.

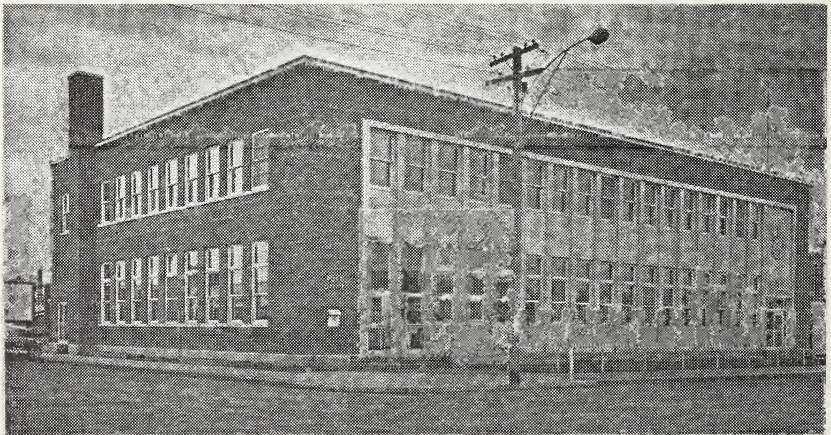
21. LOCAL RESOURCES

Wheat, oats, barley, rye, flax, grass, rape seed and legume seed, coal, oil and gas, sand and gravel, honey, straw, horses, cattle, sheep, hogs, poultry, eggs, and dairy products.

22. GOVERNMENT OFFICES AND SERVICES

Federal: Post Office, Department of National Defence - Reserve Army Unit, Customs Office, R.C.M.P. Detachment, Department of Veterans Affairs - District Office, Dominion Veterinary.

Provincial: Court House, Police Magistrate, Liquor Store, Alberta Government Telephones, Treasury Branch, Department of Public Works, Superintendent of Schools, Dairy Branch, Camrose School Division No. 20, District Agriculturist, District Home Economist, Fish and Game Warden, Poultry Branch, Driver Training Branch, Electrical Inspector, Gas Inspector, Rosehaven Old Folks Home, East Central Alberta Health Unit, Oil Conservation Board.



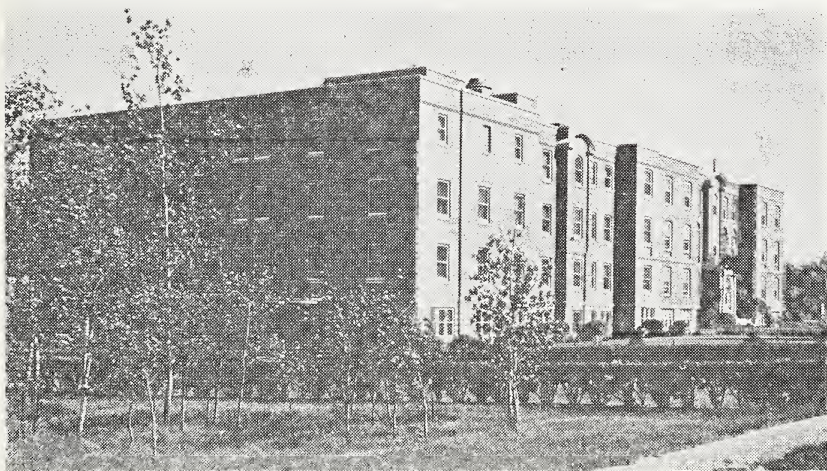
The Post Office is located in Camrose's federal building

Municipal: City Hall, housing Council Chamber, City Office, City Clerk and staff; City Police; Fire Hall; Municipal Library; Recreation Director; Public Works Superintendent; Building Inspector and Licence Officer; City of Camrose School Division No. 1315; Camrose Roman Catholic Separate School District No. 60; Camrose Municipal District No. 63; Camrose School Division No. 20.

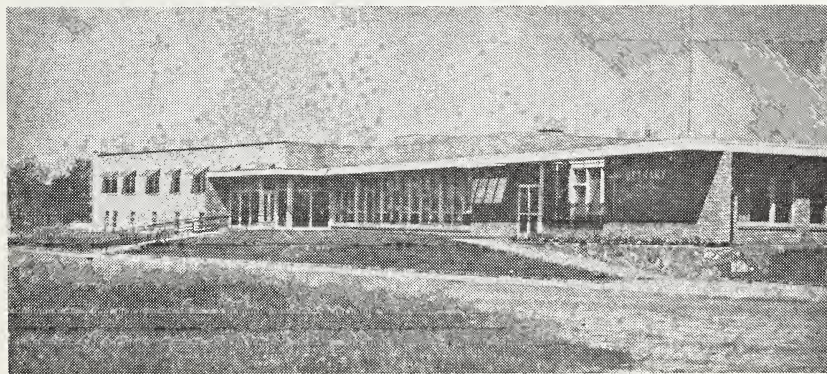
23. HEALTH SERVICES

The St. Mary's Hospital is operated by the Sisters of Charity. There are 100 beds and 18 bassinets with operating room, case room and emergency ward. The staff consists of a matron, 18 graduate nurses, 10 nurses aides, lab. technician, cooks, etc. Rates for public wards per day: Residents \$1.80; Non-residents \$13.00.

Bethany Home and Hospital has 100 beds, 50 of which are reserved for chronic patients.



A modern hospital serves people of Camrose and district



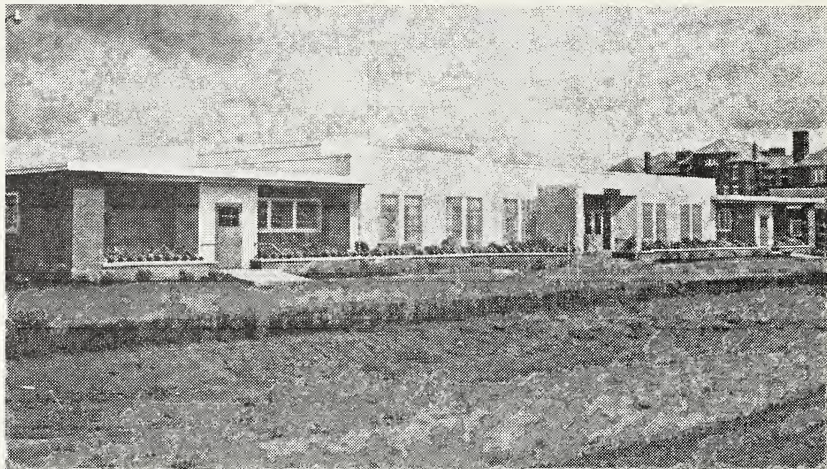
A portion of the Bethany hospital located in Camrose

Rosehaven Provincial Mental Hospital for the aged has 500 beds.

East Central Alberta Health Unit No. 10, with offices at Camrose, is responsible for medical examinations of pre-school and school age children. The staff consists of a doctor, three registered nurses, two steno technicians, one lab. technician and one sanitary inspector.

Stoney Creek Lodge, a Provincial Senior Citizens' Home has 50 beds.

Other health services: 9 doctors, 4 dentists, 2 chiropractors, 6 veterinary surgeons, 5 drug stores, 3 optometrists, 1 dental laboratory, 1 dental mechanic, 2 sanitary inspectors, 2 ambulance services, 2 funeral parlors.



This is one of three units of the Provincial Mental Hospital



A Senior Citizens' Home was erected by the Alberta Government in Camrose

24. PROFESSIONAL AND SKILLED SERVICES

(excluding Health Services)

Chartered Accountants	2	Barristers	4
Barbers	7	Beauty Parlors	4
Watch Repairs	4		

25. TRANSPORTATION

C.N.R. - Camrose to Edmonton, Camrose to Ryley, Camrose to Vegreville, Camrose to Alliance, Camrose to Calgary via Alix, and Camrose to Calgary via Stettler.

C.P.R. - Camrose to Edmonton via Wetaskiwin and Camrose to Winnipeg.

Sunburst Motor Coaches - Camrose to Edmonton via Wetaskiwin, Camrose to Edmonton via Hay Lakes, Camrose to Macklin, Saskatchewan, Camrose to Alliance, and Camrose to Alix.

Two Taxi Stands - five cabs.

Camrose Transfer - Daily truck service to and from Edmonton and Hardisty.

Hi-Way 13 Transport Ltd. - Daily truck service to and from Edmonton and Hardisty.

Licensed Airport.

26. NEWSPAPERS

Camrose Canadian (weekly); Camrose Booster (weekly).

27. COMMUNICATIONS

Local radio station CFCW with 10,000 watts, Canadian National Telegraphs, Canadian Pacific Telegraphs, Alberta Government Telephones, Post Office - Divisional, Nearest Television Stations are at Edmonton CFRN-TV, CBXT-TV and Red Deer CHCA-TV.

Radio reception is also good in the city and district from Edmonton and Red Deer Stations.

28. FINANCIAL FACILITIES

Bank of Montreal, Royal Bank of Canada, two branches of Canadian Imperial Bank of Commerce, Provincial Treasury Branch, Toronto-Dominion Bank, Credit Union, Industrial Acceptance Corporation Ltd., Niagara Finance Co. Ltd., and Crescent Finance Co.

29. HOTELS

	No. of Rooms	Single Rates	Licensed Premises
Alice	52	\$2.25 up	yes
Arlington	42	\$2.00 up	yes
Windsor	26	\$1.50 up	yes

30. MOTELS

	Units	Rating	Rates
Johnson's Motel	14	4 star	\$4.50 up
Star Dust Motel	12	4 Star	\$4.50 up
Edora Motel	10	4 star	\$4.50 up

One trailer park with electric lights, water and sewer. Rates - \$20.00 and \$25.00 per month.

31. CHURCHES

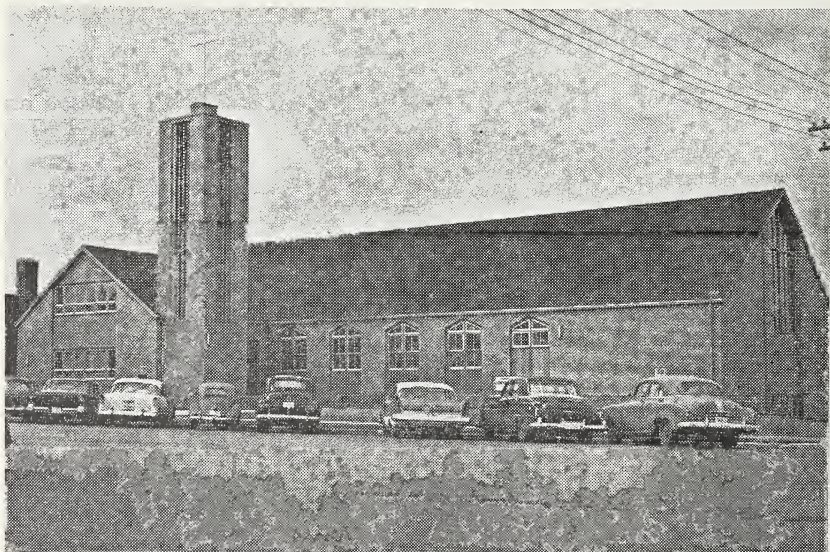
Roman Catholic, Greek Catholic, United Church, Anglican, Baptist (2), Pentecostal, Grace Lutheran, Evangelical, Church of God, Bethel Lutheran, Mission Covenant, Salvation Army, Jehovah's Witness, Seventh Day Adventist, Church of the Nazarene.

32. LODGES

Masonic, Knights of Columbus, V.A.S.A., Scandinavian, O.O.R.P., D.E.S., I.O.O.F., L.O.O.M., L.O.B.A., B.P.O.E., I.O.D.E., W.O.T.M., Rebekah Lodge.

33. SERVICE CLUBS

Rotary, Kinsmen and Kinettes, Canadian Legion, Chamber of Commerce, Junior Chamber of Commerce, Business and Professional Women's Club, Lions and Lionesses, Ladies' Auxiliary to the Canadian Legion.



Fine churches serve all denominations in the city

34. SOCIETIES

Three Home and School Associations, Camrose Agricultural Society, Canadian National Institute for the Blind, Canadian Red Cross, Fish and Game Association, Old Timers' Association, Camrose Historical Society, St. John's Ambulance, Camrose Swimming Club, Toastmasters, Camrose Light Horse Improvement Society, Horticultural Society, Camrose Public Library Board, Camrose Flying Society, Camrose Camera Club, Camrose Touchdown Club.

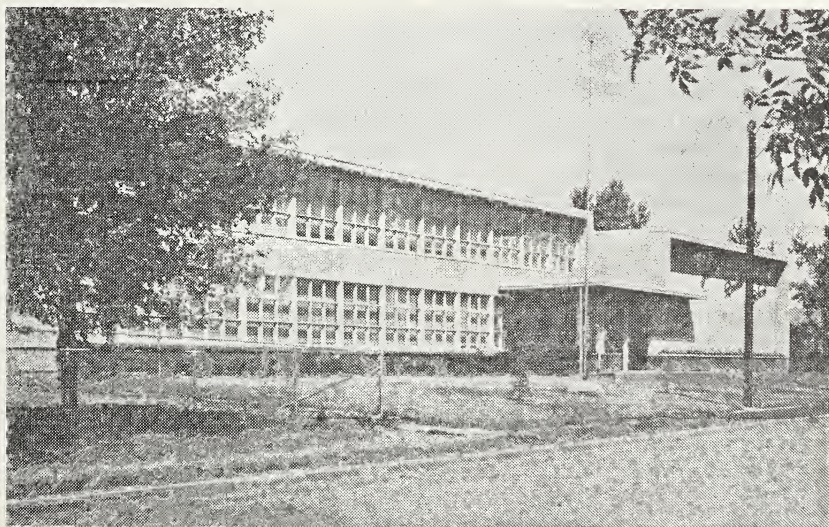
35. EDUCATION

The City of Camrose School District No. 1315 teaches grades 1 to 12 along with the following optional subjects: complete Commercial course, French, Art, Music, Drama, Home Economics and Shop. The school population is made up as follows:

	Grades	No. of Teachers	No. of Pupils
Elementary	1 - 6	17	601
Jr. High	7 - 9	10	296
High	10 - 12	11	242

The Camrose School Division No. 20 teaches grades 1 to 9 with a staff of nine teachers and 225 pupils. Optional subjects are Home Economics and Shop. The school division headquarters in the city include a complete office staff of secretary and stenographers, also a well equipped service garage servicing all the school buses in the division.

The Camrose Separate School District No. 60 teaches grades 1 to 12 along



One of the modern schools serving city and district pupils

with the following optional subjects: Typing, Art, French, Drama, Home Economics and Shop. The school population is made up as follows:

	Grades	No. of Teachers	No. of Pupils
Elementary	1 - 6	6	200
Jr. High	7 - 9	3	75
High	10 - 12	4	55

Camrose Lutheran College teaches grades 10 to 12, first year University and Commercial courses. Total enrollment 215 pupils with a staff of 14 teachers. Residential School.

Alberta Bible Institute teaches senior matriculation courses and religious instruction. Residential School.

Canadian Lutheran Bible Institute offers a short course in theological instruction for prospective teachers and missionaries. Residential School.

36. THEATRES AND HALLS

	Seating Capacity	Stage	Music
Bailey Theatre	450	yes	piano
Kam Theatre	475	no	no
Kar-Vue Drive-In Theatre	375 cars		
Exhibition Grandstand	1500	yes	no
Skating Arena	3000	no	bandstand
Anglican Hall	100	no	piano
Elks' Hall	600	yes	piano & Hi-Fi
United Church Hall	500	yes	piano & P.A. System
Canadian Legion Club House	150	no	piano
John Russell School Auditorium	300	yes	piano
High School Auditorium	400	yes	piano
Lutheran College Auditorium	150	yes	piano
Moose Hall	150	no	piano
City Auditorium	1800	yes	piano
Oddfellows' Hall	100	no	piano
Charlie Killam Gymnasium	1000	yes	piano

37. CULTURAL ACTIVITIES

Camrose Public Library with over 10,000 books. There is a Librarian in attendance from 2:00 to 6:00 p.m. except on Wednesday, and 2:00 to 9:00 p.m. on Friday. Reading room in connection. This library is supported by the city with the usual provincial government grants under the Library Act.

Camrose Historical Society and Museum.

Extra curricular subjects at High School in music, drama, art or various crafts.

Music appreciation: School band - 40 instruments; Jubilee City Band - 30 instruments.

Lutheran College Choir.

Several qualified music and voice teachers have trained many outstanding pupils.

Craft Centre (permanent quarters).

Camrose Chapter S.P.E.B.S.Q.S.A. - 48 members.

Camrose Overture Concert Association.

Cultural Activities Co-ordinator taking in Recreation Commission of eight members co-ordinating all cultural activities including: art, drama, leathercraft, woodwork and ceramics.

A public recreation program is operated by a duly appointed recreation board at council levels who employ a full time director and activity specialists including indoor and outdoor activities. A recreation centre is operated the year around for all ages. The recreation program covers playgrounds, swimming pools, all major sports, youth clubs, adult clubs, crafts, library, pre-school programs, senior citizens club. Summer resorts are but a short drive from the city. Camrose Recreation Board has sponsored several national events in the athletic field.

38. YOUTH ACTIVITIES

Boys: Boy Scouts, Wolf Cubs, Air Cadets, Sea Cadets, Boys' Club, Gun Club, 4H Clubs.

Girls: C.G.I.T., A.Y.P.A., Brownies, Explorers, Gun Club, Calf Club, 4H Clubs, Kaydettes.

39. SPORTS

Hockey (senior, junior, midgets and mites), skating, baseball (senior, junior and pony league) softball (ladies' and men's), curling (ladies' and men's), golf, skiing, badminton, tennis, rifle shooting, swimming.

Facilities: Covered arena with artificial ice for hockey and skating, covered artificial ice curling rink (6 sheets) open air hockey and skating rinks with club house (2), ski jump, baseball diamonds. Agricultural Building (badminton, boxing, wrestling and basketball, etc.), golf course (9 holes), swimming pool, wading pool (2), seven Kinsmen playgrounds operated by the City of Camrose, rifle range, tennis court, Jubilee Park (covered picnic facilities).

40. FAIRS

One of the best laid out and equipped exhibition grounds in the province. Class B Fair sponsored and directed by Camrose Agriculture Society, which also sponsors an annual sale for cattle and swine each fall and spring.

41. HISTORIC SITES

Telegraph House on the north half Sec. 32-48-21-W4 is on the east side of Little Hay Lake. It was the terminal of the first telegraph service in Alberta,

established about 1885. Duhamel Church, built in 1888, one of the first in Alberta.

42. CO-OPERATIVES

Northern Alberta Dairy Pool, Alberta Poultry and Egg Producers, Rural Telephone Co-ops, Rural Electrification Co-ops, Alberta Wheat Pool, United Grain Growers, Alberta Wheat Pool Seed Division, Camrose Saving and Credit Union, Camrose Artificial Breeding Association Ltd.

43. INDUSTRY AND BUSINESS

Type of Industry or Business	No. of Establishments	Producer or Manufacturer	Wholesale	Retail	Type of Industry or Business	No. of Establishments	Producer or Manufacturer	Wholesale	Retail
Accountants	2	—	—	—	Concrete Ready-Mix	1	1	1	1
Advertising	3	—	—	—	Cold Storage Lockers	2	—	—	2
Ambulance	2	—	—	—	Creameries	2	2	2	2
Association (Auto)	1	—	—	—	Dairy Snack Bars	2	—	—	2
Auctioneer	2	—	—	—	Dentists	4	—	—	—
Auction Market	1	—	—	—	Dental Mechanic	1	1	1	1
Auto Accessories	2	—	2	2	Department Stores	6	—	—	6
Auto Camps	1	—	—	—	Doctors	9	—	—	—
Auto & Truck Dealers	10	—	—	10	Drugs	5	—	—	5
Auto Body	2	2	—	2	Draperies	1	—	—	1
Auto Electric	1	—	—	1	Egg Grading Station	2	—	2	2
Auto Radiators	2	—	—	2	Electrical Appliances	7	—	1	6
Auto Paint	2	—	—	2	Electrical Contractors	4	—	—	—
Bakeries	3	3	5	3	Farm Machinery	7	—	—	7
Banks	6	—	—	—	Finance Company	3	—	—	—
Barbers	7	—	—	—	Florist	2	—	—	2
Beauty Parlors	4	—	—	—	Flour Mill	1	1	1	—
Blacksmith	4	4	—	4	Flour Mill (pancake)	1	1	1	—
Books & Stationery	2	—	—	2	Funeral Parlors	2	—	—	—
Bowling Alleys	2	—	—	—	Furniture	4	—	—	4
Breakfast Foods	1	1	1	—	Garages & Service Stations	25	—	—	25
Butchers	5	—	—	5	Gardening (landscaping)	1	—	—	—
Building Contractors	7	—	—	—	Gas Companies	1	1	1	1
Building Supplies	6	—	—	6	Greenhouses	1	1	1	1
Cartage Delivery	3	—	—	—	Grain Elevators	5	total cap. 200,000 bushels	—	—
Chiropactor	2	—	—	—	Groceries	8	—	1	7
Clinics (medical)	1	—	—	—	Hardware	5	—	—	5
Cleaners & Dyers	3	3	—	3	Hatcheries	2	2	2	—
Clothing (men's)	8	—	—	8	Hotels	3	—	—	—
Clothing (women's)	9	—	—	9	Insurance Agents (life)	10	—	—	—
Clothing (children's)	6	—	—	6	Insurance Agents (gen.)	4	—	—	—
Coin Wash	1	—	—	1	Investment Dealers	1	—	—	—
Coal Dealers	3	2	2	3	Implements Farm	6	—	—	6
Coal Mines	2	2	2	2	Jewellers	3	—	—	3
Commercial Signs	2	2	—	2					
Concrete Blocks	1	1	1	—					

Type of Industry or Business	No. of Establishments	Producer or Manufacturer	Wholesale	Retail
Laundries	2	2	—	2
Law Offices	3	—	—	—
Livestock Dealers	1	—	—	—
Lumber Yards	5	—	—	5
Machine Shops	3	3	—	3
Mail Order Offices	2	—	—	2
Milk Distributors	2	—	1	2
Motels	3	—	—	—
Music Stores	1	—	—	1
Needlecraft	1	1	—	1
Oil & Gas				
Well Servicing	3	—	—	—
Optometrist	3	—	—	—
Painters & Decorators	4	—	—	—
Paint Shop	1	—	1	1
Plumbers & Gas Fitters	4	—	—	—
Photographers	1	1	—	1
Pool Hall	2	—	—	—
Piano Tuner	1	—	—	—
Pipelines	1	—	—	—
Pipe Manufacturer	1	1	1	—
Printers	3	3	3	3
Propane Gas Dist.	2	—	2	2
Radio Stations	1	—	—	—
Radio Repairs	4	—	—	—
Real Estate Agents	5	—	—	—

Type of Industry or Business	No. of Establishments	Producer or Manufacturer	Wholesale	Retail
Restaurants	8	—	—	—
Sash & Door	1	1	1	1
Scrap Metal Dealers	1	—	—	—
Second Hand Store	2	—	—	2
Seed Cleaning	2	—	2	1
Sewing Machine Agents	1	—	—	1
Sheet Metal	3	3	—	3
Shoe Repairs	3	—	—	3
Shoe Stores	2	—	—	2
Sign Writers	2	2	—	—
Steam Bath	2	—	—	—
Stationery & Office Supplies	2	—	2	2
Sporting Goods	5	—	—	5
Tailors	4	4	—	4
Taxi	2	—	—	—
Tire Repairs	2	2	—	2
Theatres	3	—	—	—
Trailer Camps	1	—	—	—
Variety Stores	3	—	—	3
Vacuum Cleaners	1	—	—	1
Valve Manufacturers	1	1	1	—
Veterinarians	4	—	—	—
Vulcanizing	3	3	—	3
Water Softener	2	—	—	2
Welding & Machine Shops	5	5	—	5
Woodworking	5	5	1	5

44. SITES

Excellent industrial and residential sites served with all utilities can be purchased from the city and from private owners at a reasonable cost.

45. INDUSTRIAL DEVELOPMENT

Camrose Tubes Limited located on 65 acres in the northeast section of the city manufactures large diameter steel pipe, up to 42". This is one of the largest plants of its kind in the world, employing a maximum of 350 employees.

The Alberta Wheat Pool Seed Division specializes in processing and cleaning of grass and legume seed. The 10 million pounds of seed handled each year is exported to all parts of the world, only a small portion being used locally. It employs between 18 and 40 persons.

Camrose Transit Mix Limited has a capacity of 500 yards per day and keeps four transit mix trucks and six employees busy.

Brager Transport operates heavy industrial equipment in a sand, gravel, crushing and excavating business. It operates six trucks from a 100 acre gravel pit and employs 10 men.

Magcobar, a plant processing bentonite and barite used in oilfield drilling and foundry work, is situated 26 miles southeast of the city. The capacity is 200 tons per day, employing 14 persons. The product is exported all over Canada.

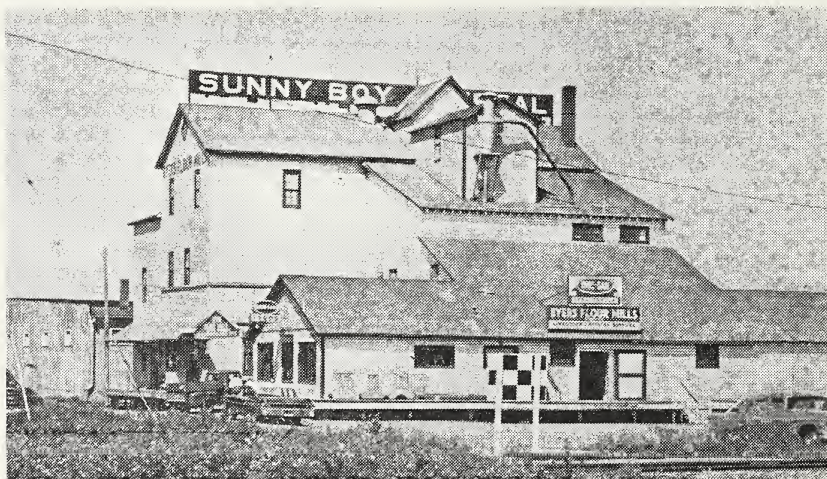
Ness' Dairy employs 15 to 16 persons and has three trucks distributing bottled white and chocolate milk and cream in the city. The milking herd averages 100 head of Holstein cattle.

Northern Alberta Dairy Pool with its new \$400,000 plant processes milk and cream, manufactures butter oil, powdered and skim milk, powdered buttermilk, plastic cream and cream concentrate. It retails bottled milk and cream with two trucks serving the city, and wholesale butter, cream, white and chocolate milk, ice cream and a complete line of fountain sundries to the cafes and hotels. Two other trucks are kept busy with farm milk pickups throughout the district keeping the plant running to its capacity of 10,000 lbs. of fluid milk per hour. Twenty-three are on the payroll.

Camrose Collieries Ltd. is a strip coal mine operation. The coal field is five miles east of the city on Highway 13. The present capacity is 1,000 tons per eight hour shift. The registered name is Camcoal.

Camrose Electric Controls Ltd. manufactures safety valves for oil and gas lines.

Byers Flour Mills Ltd. is a large industry in the Camrose area. This firm produces flour, breakfast cereal, pancake flour, feed, etc. "Sunny Boy" breakfast cereal, known throughout Canada, is produced at this mill. It has 20 employees on the payroll.



Camrose Sunny Boy Cereal plant is known throughout Alberta

Imperial Lumber Sash and Door factory manufacturers all sizes and shapes of custom made windows and doors. It employs four or five workmen in a well-equipped plant.

Newsom Concrete Products plant is a new and completely efficient concrete block producing operation. Its complete production can be absorbed in the territory tributary to and serviced by Camrose.

Camrose is in the heart of the densely populated area of the province, approximately 31% of the population lives within a 50 mile radius. 61% of this is farm population, 21% non farm but rural, and 18% is in urban areas. There are 42% of all farms in the province located in this area. Almost half of all oats and barley acreage sown in the province is grown in the vicinity as well as 29% of the wheat acreage. Field crop production for cash sale is relatively important in the Camrose district. Livestock and poultry is growing in importance for a farm cash income with cattle being 37%, hogs 47% and poultry 45% of the provincial population total. The City of Camrose is believed to be the largest hog shipping centre in Canada. The progress toward mechanization in this district is outstanding. There are 1.1 autos per farm and an average of one combine (grain) per farm. More than 70% of the farms are electrified. The net effective buying income of this district as of 1956 was \$63,933,000 averaging \$4,409.00 per family.

46. TRADING AREA

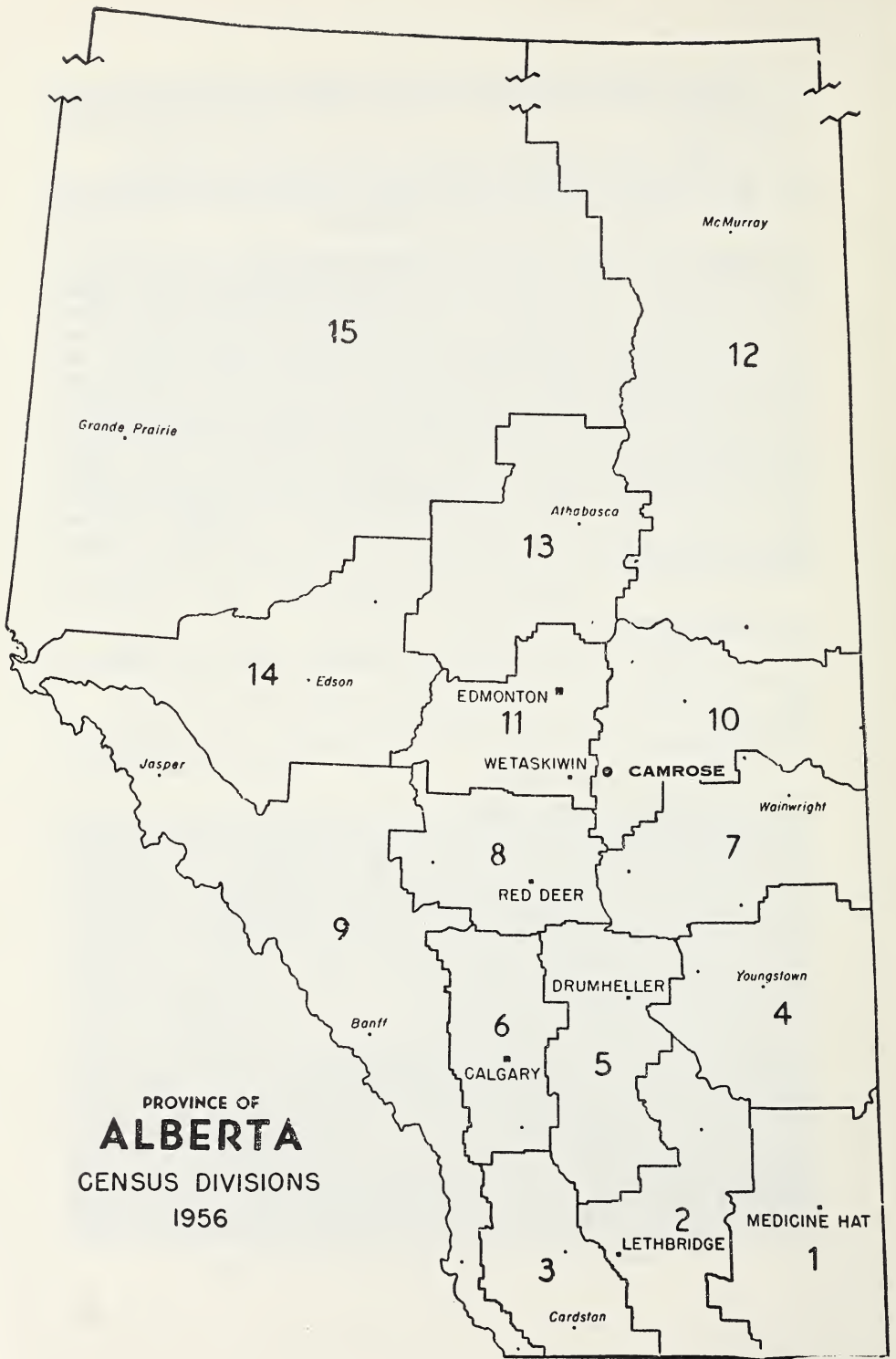
On the north 25 miles; on the west 18 miles; on the south 35 miles; on the east 120 miles.

47. POPULATION

Trading population - 60,000.

City population, 1956 - 5,743.

City population, 1961 - 6,924.



PROVINCE OF
ALBERTA
 CENSUS DIVISIONS
 1956

THE
BY AGS

THE
BY AGS

