

DINES TELLS HIS STORY OF SHOOTING!

WANT AUTOS DECORATED IN HUGE PARADE

Number of Cars Increases
As Date For Celebration
Draws Nearer

The two winning floats that brought the three first prizes to Glendale in yesterday's Tournament of Roses at Pasadena will be entered in the Greater Glendale Parade that is to be held Saturday, January 5, to celebrate the passage of the \$10,000,000 building goal during 1923 and to boost the passage of the sewer bonds at the election to be held on January 8, according to an announcement this morning by L. H. Myers, chairman of the parade committee.

L. W. Chobe, the designer of the two floats, the Glendale Fairyland float and the Elks' Charity float, has agreed to spray the flowers and to maintain them in the freshest possible condition for Saturday's big procession.

In the commercial division of the parade it is suggested that the firms entering cars or trucks decorate them in the most appropriate manner possible, as the advertising effect will, it is claimed, be an important feature of the display of such vehicles as they make their way through the business and the residence sections of the city.

Decorations on Cars
Decorations on the automobiles entered in the citizens' division, Mr. Myers states, is optional, but it is desired that as many flags as possible be flown from the cars in this group, not only from patriotic motives but also to add color to the long line of cars that will be in the parade.

Every day sees the list of entrants increasing, as the people of Glendale realize the scope of the project that will mark one of the high lights in the city's history, the attainment of the mark set for Glendale's progress in 1923, and the determination of its residents to place their city in the list of those who are building for the future on a solid foundation of modern civic utilities.

MERCURY CLIMBS AFTER ICY SNAP

Region From Great Lakes to
Rockies Sees Relief
From Cold Wave

CHICAGO, Jan. 2.—Temperatures were slowly climbing today after the promised and gusty entrance of winter hand in hand with the New Year.

Over the west and northwest from the Rockies to the Great Lakes the snow and ice-trimmed reason made up for its tardiness and with drops as wide as 70 degrees set marks close to last year's coldest days.

Minnesota saw it ten above, with a slow rise in prospect. In Chicago the mercury had reached 22 today and was still climbing, after receding to five below New Year's day, but one degree above the coldest of the previous winter.

Italians Protest On Immigration Ruling

WASHINGTON, Jan. 2.—The Italian government has filed a formal protest with the state department against the proposal of Secretary of Labor Davis to reduce the number of immigrants arriving in the United States from countries bordering on the Mediterranean sea, it was announced today.

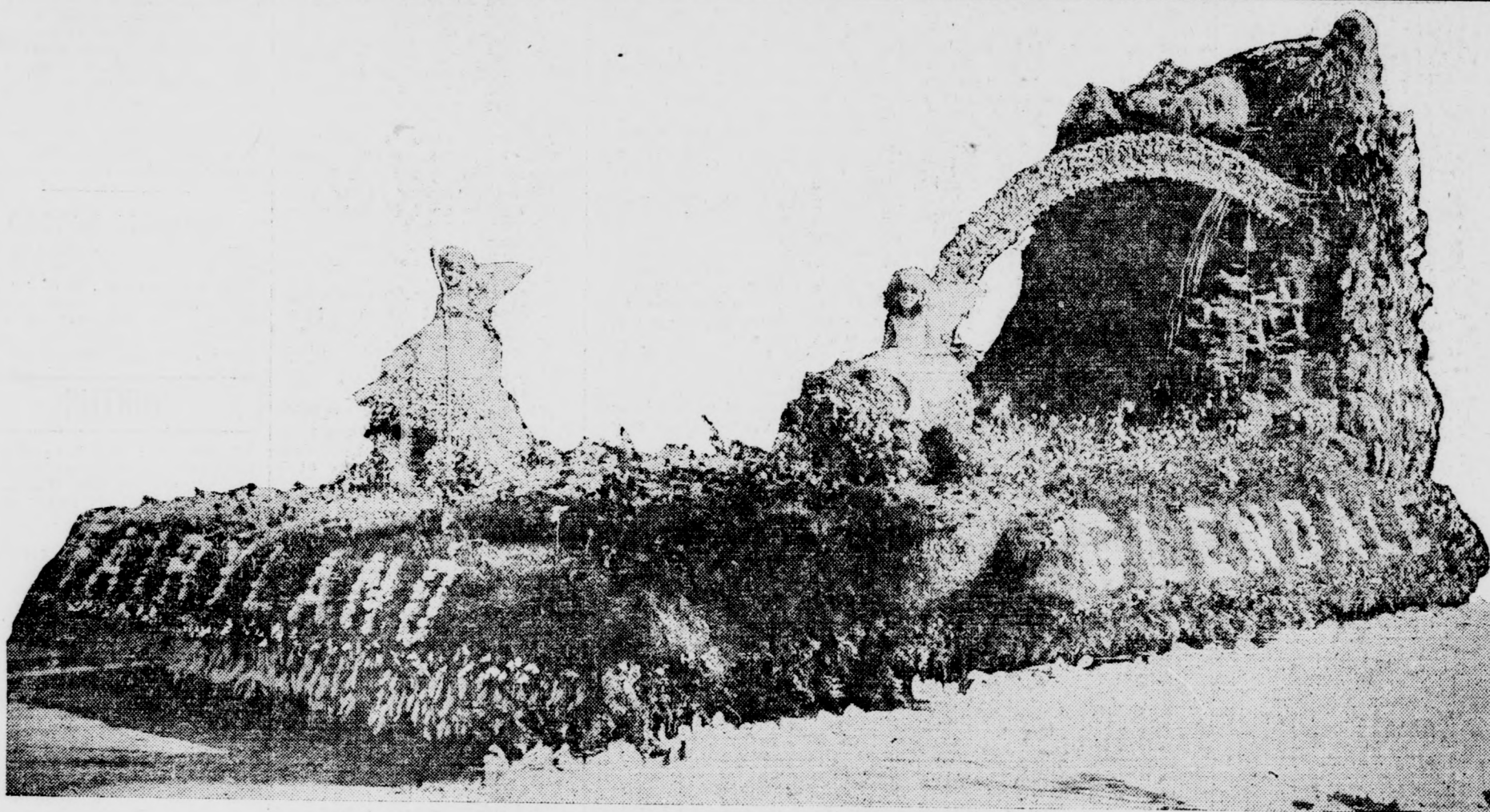
Denies Reports That Shenandoah Is Unfit

WASHINGTON, Jan. 2.—Reports that Captain Frank R. McCreary, commander of the Shenandoah, had declared the airship unfit for its proposed polar flight were officially denied this afternoon by the navy department. Announcement was made that McCreary had flatly denied having given the purported interview.

WEDDING DATE SET

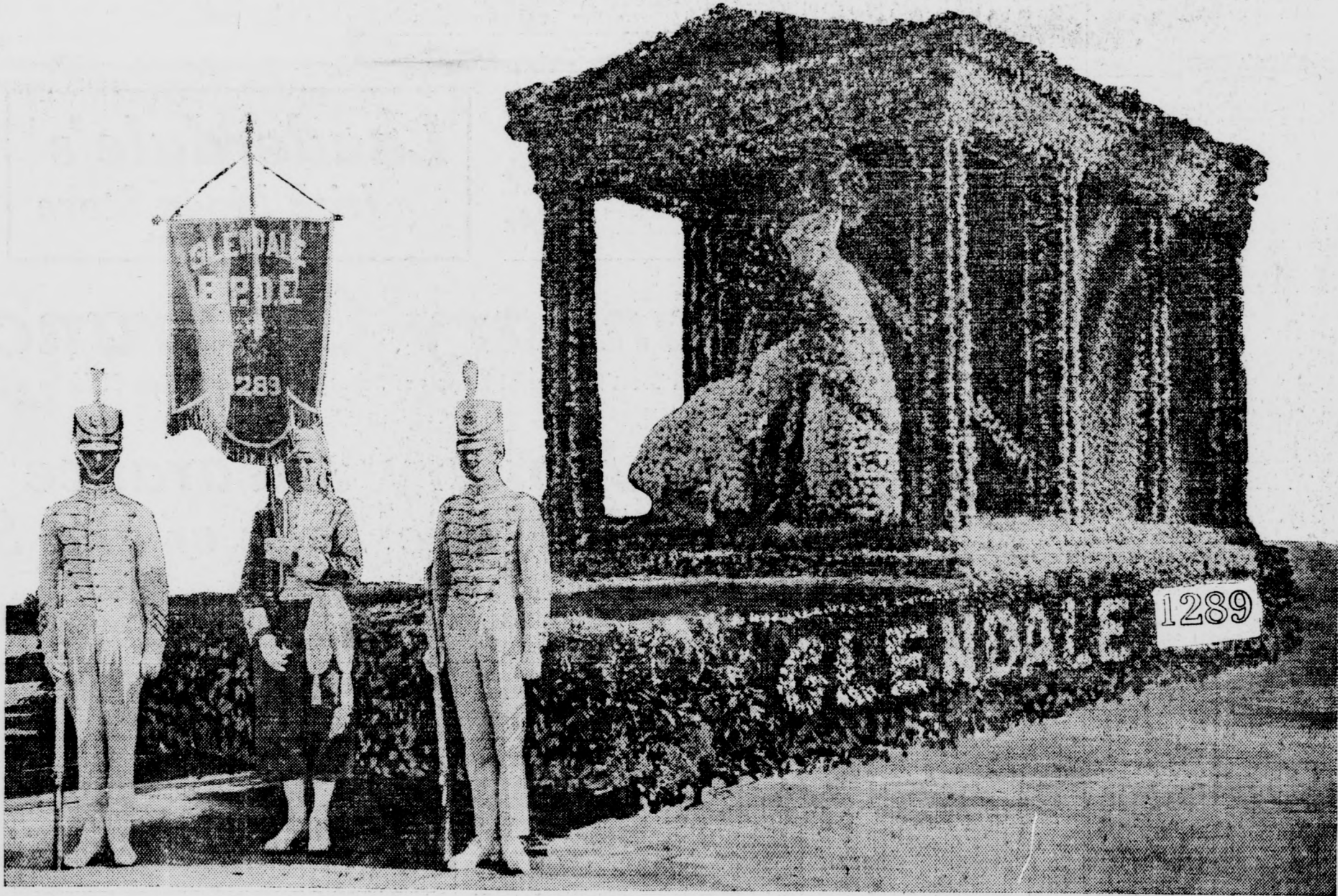
TOKIO, Jan. 2.—The date of the wedding of Prince Regent Hirohito was definitely set today for January 27.

Glendale's Fairyland Display in Parade



Copyright 1924, Keystone Photo Service.

Here's Local Elks' Prize Winning Float



Copyright 1924, Keystone Photo Service.

Order Your Copies Now Of Big New Year Edition

Going, going, going! Thousands of extra copies of The Glendale Evening News New Year's edition already have been sold and only a limited number remain—at 10 cents per copy, wrapped and ready for mailing. The postage is 5 cents extra.

With advance orders for more than 1200, there were nearly 800 copies sold over the counter yesterday. Today the sales continued and soon the supply of the seventy-two pages of Progress and Prosperity will be exhausted. Many splendid compliments were paid The Glendale Evening News for its most representative and complete New Year's number, by far the biggest and best newspaper ever printed in Glendale.

FAVOR PROMOTION

WASHINGTON, Jan. 2.—Secretary of War Weeks today recommended to President Coolidge the promotion of Colonel William P. Burnham of Scranton, Pa., to the rank of brigadier general. Colonel Burnham at present is commanding officer of the Presidio of San Francisco.

THREE KILLED

CHICAGO, Jan. 2.—Moonshine celebrated the New Year by killing three persons in Chicago, according to reports today to police.

FAMOUS AUTHOR DIES

LONDON, Jan. 2.—Rev. S. Barling Gould, famous author and composer of "Onward Christian Soldiers," died today.

KILLING FROSTS VISIT SO. CALIF.

Fruit Growers Fight to Save
Groves as Cold Snap
Hits Southland

LOS ANGELES, Jan. 2.—Southern California was visited by "killing frosts" during the night and early today, it was revealed in reports to the local United States weather bureau, but fruit growers fought the cold with smudge pots in their groves and saved most of the citrus fruit, it was claimed.

The damage is believed to have been considerable in several sections, according to Colonel H. B. Hersey, in charge of the weather bureau here. He said the use of smudge pots prevented it from being worse. Colonel Hersey said extreme precaution would have to be taken again tonight, as killing frosts are predicted.

City Wins Two First Prizes at Pasadena's Tournament of Roses Through Artistic Creations of L. W. Chobe, Local Man

By KATHERINE V. SINKS
Of The Evening News Staff.

Gorgeously costumed in beautiful California flowers, Glendale attended the thirty-fifth annual Tournament of Roses in her sister city, Pasadena, yesterday, and captured first prize for civic entries and also the first sweepstakes prize in the great pageant-parade.

Glendale won still more honors in the division comprised of Elks' lodge entries, the Glendale lodge, No. 1289 being awarded first prize.

This inspiring attainment for "The Fastest Growing City in the United States" on the first day of the new year recalls to the minds of long-time residents Glendale's participation in Tournaments of past years, and stirs the imagination of newcomers concerning any previous honors.

Way Back in 1911
In the big special New Year's edition of The Glendale Evening News yesterday there was an account of the first entry Glendale ever made in the Pasadena Tournament. That was in 1911 and Glendale made a splendid beginning of her nationally-known re-

CHAUFFEUR FOR ACTRESS HAD NO REASON TO FIRE, DECLARES WOUNDED MAN

Millionaire's Son, Host to Mabel Normand
and Edna Purviance, Denies He Attempted
Violence; Police Continue Inquiry

By WILLIAM G. CAYCE
For The International News Service.
LOS ANGELES, Jan. 2.—"The man that shot me was full of hop!"

Such was the statement today of Courtland S. Dines, scion of a well known Denver family, who was shot and seriously wounded last night by H. A. Greer, alias Joe Kelly, chauffeur for Mabel Normand, at Dines' apartment in North Vermont avenue, while Miss Normand and Edna Purviance, another well known film actress, were present.

Gasping for breath on his cot at the receiving hospital, Dines told his story of the shooting exclusively to International News Service. One bullet from Greer's weapon pierced Dines' body, entering his chest and coming out in his back, and another nipped his ear.

Denies Threatening
"I understand he has told the police I threatened him with a bottle," Dines said. "I never thought of such a thing. There was no fight and not even a party was in progress in my apartment last night. Miss Purviance and I had been out celebrating the advent of New Year's the night before, but Miss Normand was not in our party. Yesterday afternoon Miss Normand called and said she was coming over. We told her to come ahead, and she did. When she arrived we all were feeling pretty low and we all had a drink. We sat around and talked for a while. After a while Mabel remembered she was to see some friends off on a train. I told her she was in no condition to be seen at the station, but she would not listen to me and telephoned her companion, a Mrs. Edith Burns, to send Greer after her at once. Before the chauffeur arrived we had another drink.

Denies Engagement
"When the chauffeur arrived, Miss Normand was sitting on a divan and I again advised her not to try to go to the station. "She is going with me," the chauffeur said. "Edith said to bring her."

"You know how erratic Mabel is. I was at a party at the Coronado hotel some time ago when she broke her shoulder because she would not listen to reason. Again I warned her not to go. "With that, Greer whipped out a gun and plugged me through the lung, I thought. He has said I tried to hit him with a bottle. Such a thing never entered my mind. Miss Normand is only a friend of mine. Why should I fight over her? She has been going around with Edna and me for the last six months. And there is nothing serious between Miss Purviance and myself, either. We are just good friends—that is all."

In his story of the shooting to the police, Greer maintained that Miss Normand was to be taken to the hospital on Thursday to be operated upon for appendicitis. Greer also maintained that Mrs. Edith Burns, Miss Normand's companion, told him that Miss Normand had telephoned her that she was being kept at Dines' apartment against her will and that he rushed to her assistance, claiming that when he arrived at Dines' apartment both Dines and Miss Normand were in the living room and that Miss Purviance was in a bedroom. On the other hand, Miss Normand claims she was not in the living room with Dines when he was shot.

Police Not Satisfied
Captain Cline declared today he was not satisfied with Greer's story that he went to Dines' apartment, believing Dines was plying Miss Normand with liquor and preventing her from leaving. Cline planned to question Edith Burns, Miss Normand's companion, today. Mrs. Burns, Greer claims, sent him to Dines' apartment after Miss Normand had told him she was being kept there against her will.

Dines' fever, which rose this morning, was brought down by a treatment and his pulse was restored to normal. His physicians stated while Dines' condition was serious, it could not be considered dangerous.

During the time last night that Miss Normand and Miss Purviance were in the office of Assistant Captain of Detectives Herman Cline, both repeatedly asked to be allowed to go into the emergency hospital—which is in the same building—and see Dines. This permission was denied them, however, until Cline and members of the homicide squad questioned Kelley in the presence of the two young women.

Words of Love
When, though, shortly after midnight the police told Miss Normand and Miss Purviance that (Continued on Page 3)

FOIL REBELS IN TAMPICO ATTACK

Mexican Troops Halt Drive
On Rich Oil Region By
Revolutionists

For International News Service.
MEXICO CITY, Jan. 2.—An attempt by rebels under former Governor Lopez de Lara, of the state of Tamaulipas, to seize Tampico, Mexico's greatest oil port, failed, it was announced by the war department today.

Lopez de Lara started his movement against the federals twenty-five miles west of Tampico. The federals routed the revolutionaries at El Cerro hacienda.

Lopez de Lara was reported in flight toward the United States border.

Defend Oil Fields
A division of picked troops will be organized, equipped with rifles, airplanes and machine guns acquired from the United States government, to control the Tampico oil fields. It will be under personal command of former Minister Plutarco Elias Calles.

This army will co-operate with the federal forces under General Eugenio Martinez Gonzales. All three armies are to converge upon the rebel stronghold at Vera Cruz. It is officially confirmed that the Mexican government is seeking purchase of four American built cruisers for use against the rebel war craft in Vera Cruz harbor.

HOLIDAY LIQUOR TAKES BIG TOLL

New Year Celebration Takes
Twelve Lives in Wet
Orgy in Gotham

NEW YORK, Jan. 2.—Twelve dead, 241 ill, some critically—that was New York's toll from holiday "hoop" drinking, a survey revealed today. Police said the figures were double those of last year, embracing the toll of both Christmas and New Year's.

Some observers insisted it had been the wettest holiday celebration in years—even before prohibition.

William Anderson, official of the state anti-saloon league, contended, however, that the New Year celebration was "quite dry." Arrests were few, only four persons being charged with a liquor law violation since New Year's eve.

\$100,000 Loan to Fall Explained by McLean

WASHINGTON, Jan. 2.—The \$100,000 loan which E. B. McLean, Washington newspaperman, made to former Secretary of the interior Albert B. Fall, in 1921, had no connection with the date of any oil transactions, according to a statement made by McLean today through his attorney, former Attorney General A. Mitchell Palmer.

Man, Eight Children, Die in Burning Home

OIL CITY, Pa., Jan. 2.—A man and eight of his grandchildren were burned to death in a fire which destroyed the home of Claude Emminger, near Tylersburg, Clarion county, yesterday, according to word reaching here today.

The Herald of Values
Unusual



**First Floor
January Clearance of
SILKS**

Messaline Silks
\$1.45

A good line of colors—36 in. wide.

**\$2.75 Crepe de Chines
\$1.95**

Our standard quality—40 in. wide, good range of colors, popular for so many things.

**\$3.50 Flat Crepe
\$2.85**

Suitable for dresses, underwear, etc., good line of colors, 40 in. wide.

**Corduroy, yard
85c**

Our regular quality, good standard colors. Reduced for clearance.

**One Lot of Fancy
Woolens**

Ranging in price from \$1.00 to \$6.50, at

1/2 Price
While they last

**Japanese Crepe, yard
25c**

This comprises 35c crepes in all good colors.

**40c Ginghams, yard
29c**

These include our better 32-inch ginghams in a full line of checks, plaids and stripes—beautiful color combinations.

**65c Fancy Madras
Shirtings
49c**

32 inches wide in very pleasing patterns, stripes in new pattern, good colors.

**75c Fancy Turkish
Towels
49c**

These are in fancy design in pink, blue and yellow, also white with colored borders—heavy quality.

**"Hope" Muslin
17c**

A well known brand of bleached muslins, 36 inches wide.

Limit, 10 yds. to a customer.

Dress Trimmings
40c Quality 25c yd.
60c Quality 35c yd.
Colored bandings in silk and wool, 1/4 to 2/4 inch widths.

**Lisle Bloomers
75c**

Made in white or pink, double gusset and fancy knee.

**95c to \$1.50 Ribbons
65c**

Taffeta Dresden ribbons in floral designs, plaids and Roman stripes, seven inch widths, a good assortment of colors and patterns. Very special.

January SALES

Store
hours
8:30 to 6
every
day

Webb's

Phone
Open 3:30
Private
Branch
Exchange

Brand at Wilson

Sale Starts Thursday,
January 3rd—9 A. M.

JANUARY—A MONTH OF VALUES

—A MONTH OF OPPORTUNITIES

Important sales features in every department in our store. Sales of Apparel. Sales of White. Sales of China and Home Utilities. You will be well repaid, for the reductions are very drastic, as our stocks are large and must be reduced at once.



Clearance of Furs, Dresses, Coats and Children's Wear

Sale of Better
DRESSES

Very Special
\$24.75

—Included are chiffon velvets, charmeuse and satin canton dresses of the better kind, dresses that usually sell as high as \$42.50. These are all new models and many were bought at a saving to be used for this January sale. The reductions are large and represent a decided saving.

\$24.75



Children's Dresses

Sizes 13, 15, 17-year, for the larger girls. French flannel, velour and fine velvets are used in these garments, which are stylishly modeled for dress or for sports wear. The sport dresses are unusually attractive in combinations of green and white and all red flannel. Velvets are of fine quality, attractively made and trimmed with braid or metal buttons. Our January Clearance Sale brings these garments to you at about 1/2 regular price—\$11.95.



**Children's Rain Capes
at \$1.50 and \$2.50**

Fine quality, guaranteed
Fine quality guaranteed rainproof capes. Attached hood, plaid lined three button cape, with armholes; colors, navy, black and red. Very special value at \$1.50. Sizes 6 to 14. Hood attached, good fitting and full sweep. Regular \$4.50 values at \$2.50. Sizes 4 to 14.

**Children's Coats
at \$10.00 and \$16.75**

Fur trimmed or self trimmed, in fine velour, bolivia or in sport materials, well tailored and good linings. Sizes 6 to 14. Formerly sold as high as \$19.50. Very special, \$10. All our better grades of fur trimmed and sport coats, stylish misses' models. Values to \$29.50. Sizes 6 to 16 years. Very special, \$16.75.

January Clearance of COATS—FUR TRIMMED Coats at \$39.50

Fur trimmed with wolf, squirrel or fox collars, crepe lined and warmly interlined. Included also in this lot are a few untrimmed coats of fine material that were formerly more than twice this price. Special, \$39.50. Colors, navy brown or grey.

Fur Trimmed Coats, \$79.50

On this rack you will find luxurious fur-trimmed coats that are regularly sold at \$100 and \$125. The materials are high lustre Bolivia, Fashona, Ormandale and Lustrona, and the furs of wolf, fox, viatka and beaver. All are new models and at a saving of about 1/2 price.

Special, \$79.50

Colors are kit fox, black, brown, and taupe.

INFANTS' WEAR REDUCED

A broken assortment of white outing gowns and petticoats, slightly soiled from handling, finished with braid or crochet edge. Reg. \$1.00 and 85c values at 59c.

\$2.95 AND \$2.75 ROMPERS AND CREEPERS AT \$2.25

Sizes 1 to 4 years. Imported chambray and crepes, one and two color combinations, trimmed with ruffles or dainty touches of hand work in colors.

69c BABY CREEPERS AT 53c

AT 53c
Blue and pink, sizes 1 and 2 only, of good quality of chambray, white piping trim.

98c ROMPERS AND CREEPERS AT 83c

Sizes 1 to 3, a broken assortment of colored chambray in peg-top styles, trimmed with piping and large pearl buttons.

\$1.25 AND \$1.50 INFANTS' MUSLINS AT 89c

LIN SLIPS AT 89c
Good soft quality of nainsook, button front, suitable for plain slips or gowns for baby. Braid or dainty embroidery trim.

CHILDREN'S MUSLIN DRAWERS

A broken assortment, sizes 1 to 12 yrs. Made of good quality of muslin, trimmed with embroidery or lace edge. Reg. price 39c, 45c, at 29c. Reg. 50c, 59c, 65c, at 39c.

CHILDREN'S COLORED DRESSES

Wash dresses of ginghams and crepes, some trimmed with touches of hand embroidery, with and without bloomers. Sizes 2 to 5 years. Reg. prices, \$1.98 and \$2.85, at \$1.19.

A broken assortment of white outing gowns and petticoats, slightly soiled from handling, finished with braid or crochet edge. Reg. \$1.00 and 85c values at 59c.

CHILDREN'S SWEATERS

All-wool colored sweaters, button fronts and slip-over styles. Prices \$2.98 to \$3.45, at \$2.85.

A CLEAN UP OF CHILDREN'S HATS

Tailored hats for small boys and girls, chinchilla, Duvetyn and some Astrakan trim. Formerly priced \$1.25 to \$2.50, at 98c.

INFANTS' BATH ROBES

Good warm robes, white downy materials, trimmed with pink or blue, some have attached hoods. Regular \$1.98 values, at \$1.49.

BABY BUNTINGS

Of white double faced eiderdown, button across bottom, pink or blue trim, and attached hoods. Reg. \$3.50, at \$2.85.

SLEEPING GARMENTS

A broken assortment of colored sleepers with feet slightly soiled. Sizes 1 to 8 years. Prices 85c to \$1.25, at 59c.

Millinery Dept., 2nd Floor

BEAUTIFUL NEW SPRING HATS

Individual Styles and Exclusive Models at

\$10⁰⁰



These hats comprise the new straw and silk taffeta combinations so popular. The colors are the season's best and comprise grey, rose, new blue, changeables and wonderful new black hats, with burnt peacock trimmings; others flower trimmed.

JEWELRY DEPT.

offers the following exceptional values in very desirable items, all at big reductions, some at

Half Regular Price

\$1.00 Cuff Links 50c
Cuff links for men and boys. Enamel tops, colors to match shirts.

\$1.00 Bar Pins 50c

Bar Pins of white metal, set with brilliants.

\$6.00 Cordeliers \$3.00

Cordeliers with metal and stone set pendants, a great variety of attractive colors.

\$1.50 Red Beads \$1.00
Red beads, one of the most popular colors, graduated.

\$3.95 Leather

Pouch Bags \$2.95
Black and brown genuine leather Hand Bags, pouch shape.

SECOND FLOOR

SPECIALS

\$9.50 Georgette

Blouses

\$4.95

Broken sizes, white and colored Georgette Blouses, lace trimmed.

\$5.00 Silk Bloomers

\$2.95

Van Ralste and odd silk Bloomers in flesh glove silk, broken sizes.

\$12.00 Wool Sweaters

\$7.50

Wool tuxedo Sweaters in dark colors, some with brushed wool collars.

Ladies' Tuxedo Fiber

Silk Sweater Coats

\$9.95

In buff, black, navy and brown.

January Clearance Prices

DRAPERY DEPT.

First Floor

75c to 85c Draperies

49c

A mixed lot of Draperies, consisting of madras, figured Draperies, two-tone Draperies, linen finish cretonnes.

Curtain Marquisette

yard

17 1/2 c

In white, ivory or Egyptian.

45c Marquisesettes

33c

High grade plain and figured Marquisesettes. A good assortment. Will make delightful curtains for bedroom and breakfast room.

Silkoline, yard

23 1/2 c

Standard quality, plain and colored

\$1.95 to \$2.25

Silk Gauze, yard

\$1.59

This is the season's most popular curtain fabric.

\$1.25 to \$2.00

Silk Drapery

89c

Store Hours 6:30 to 6:00 every day
Webb's Phone-Glen. 3200 Private Branch Exchange

Brand at Wilson

Sale Starts Thursday,
January 3rd—9 A. M.

January SALES

Our First Big
Sale in the New
Downstairs
Store

Phone-GLENDALE 3200
Webb's Store Hours 6:30 to 6:00 Every Day
BRAND at WILSON
DOWNSTAIRS STORE

Don't Miss This
Money-Saving Opportunity! Come
Early



A Column of Values

Downstairs Store

A lower level store that has items of interest to the thrifty housewife.

Plain Color Gingham
yard
15c

A representative line of colors, and 27 inches wide.
32-inch Gingham, yd.
19c

Plaids and checks in all good color combinations.
Cotton Challies, yard
18c

Good patterns, 36 inches wide, not seconds, but good first quality merchandise.
American Prints, yd.
10c

Light and dark patterns—a real buy.
Genuine Windsor Crepes, yard
25c

White, colors and fancy patterns, in good assortments.
40c Devonshire Cloth yard
27c

Short lengths, in plain and fancy stripes in light and dark colors.
30c English Prints
21c

Short lengths, and a good variety of patterns, both light and dark colors.
Mail Carrier Blue Shirtings, yard
19c

A regular item everyone knows. Short lengths. A value.
Cotton Crash, yard
12½c

Red border, 17-inch Crash.
Cotton Crash Toweling
19c

19 Inches wide, red border, white.
Pure Linen Crash, yd.
20c

Natural colors in blue, red and white borders.
Bleached Linen Crash yard
25c

A real good quality and extra good value.
Outing Flannel, yard
17c

White and light colors in checks and stripes—a good heavy quality. Really an excellent value.
30c Outing Flannel, yd.
21c

36 inches wide, extra heavy, 30c quality, in good patterns.

Wash Cloths

Colored and White

7 for 25c

Limit, 50c worth to a customer
Bleached Sheets
Good quality Seamless Sheets—
Size 63x90 \$1.29
Size 72x90 1.39
Size 81x90 1.49

Bleached Pillow Cases
39c

42x36—45x36 sizes,
35c Cannon Cloths
25c

This is a real value—similar to Indian Head.
45c Indian Head, Yd.
29c

44 inches wide—real Indian Head, short lengths.
Heavy Brown 48-inch Sheeting, yard
25c

Short lengths, a regular 40c value.
9x4 Extra Heavy Sheeting
60c

This sheeting sells at 75c a yd. Short lengths.
Unbleached Sheets
\$1.05

Size 80x90
Good heavy quality "Utility" Sheets.

Unbleached Pillow Cases
29c

42x36 size only.
\$1.50 Ladies' Black Silk Hose, pair
\$1.29

In all sizes—imitation seam.
Bungalow Aprons
97c

Ladies' bungalow aprons of Scout percales. A good range of patterns and colors.
Misses' Black Cotton Hose, pair
25c

Sizes 6½ to 9½.
Gingham and Scout Percale House Dresses
\$1.95

Rick Rack and bias trimmings, \$2.50 values.
Brown Muslin, yard
15c

Good Quality
A limited supply of this number.
Turkish Towels each
18x36 Size.
25c

DOWNSTAIRS
Blanket and Drapery Dept.

\$4.95 and \$5.50

Comforts
\$3.95

15 pure cotton filled comforts, size 54x81—

\$3.25 to \$3.50 Staple

Cotton Blankets, pair
\$2.59

Size 66x80—and 70x80—in either grey or tan.

50c Figured Bungalow Nets
29c

An extra good item.
Curtain Rods, each
7½c

12 dozen only—sizes 18 to 30; finished with large ball ends.
325 Yards Bold Figured Swiss for Curtains, yard
16½c

Colors blue or rose.
300 Yards 95c Cretonnes, yard
39c

Heavy Rep cretonnes, 36 in. wide. The best value ever offered in cretonnes in Glendale.

Downstairs Crockery and China Dept. Clearance

Silk Lamp Shades and Standards—½ PRICE

Only 20 lamps to choose from, consisting of fancy high grade shades in all the newest styles and color combinations, beautifully trimmed, fitted with high grade standards. Shades from \$15 to \$40; standards \$10 to \$25. Consisting of floor and table styles. While they last—



½ PRICE

40-Piece Set White Dishes

\$3.95

Only a limited number of sets of white dishes comprising 40 pieces, sold at \$5.95 regularly. Only one set to a customer.



\$3.95

\$19.95 Congoleum Rugs, 9x12

\$15.00

15 Congoleum Rugs, 9x12 size, in good range of carpet patterns, slightly imperfect. Reg. price, \$19.95. While they last, sale price—

\$15.00 each

\$1.25 to \$2.00

Earthenware Teapots 75c

250 earthenware teapots in plain ware and fancy decorated. Large, medium and small sizes. Colors, black, brown. Regularly sold \$1.25, \$1.50, \$2.00.

Special Clearance Sale 75c Each

\$6.00 to \$6.50

Coffee Percolator \$5.00

Only 15 in 5, 6, 7-cup size; high grade made, high nickel finish, ebony handle, improved style. Complete with gas plate.

Clearance Sale Price \$5.00

59c-75c Creamer and Sugar Sets

49c

White decorated china creamers and sugar sets in several patterns and colorings. Regularly sold at 59c to 75c.

Sale Price, 49c Set

India Blue Cup and Saucer

35c

Separate cups and saucers of white ware, fancy blue patterns, two size cups, worth 50c.

Clearance Sale Price 35c Each

10c Glass Tumblers 25c Set

Set of 6

2 barrels of glass tumblers, of light and heavy style, plain and fancy. Regular value 16c each.

Clearance Sale Price 25c Set of 6

\$5.00 Pyrex Pie Dishes with Metal Stands \$2.95

Stand \$2.95

Fancy Pyrex dishes, pie dishes, casseroles with nickel and silver stands, in wide range of patterns to choose from, \$5 values.

Clearance Sale Price \$2.95

\$1.98 to \$3.00

Bowls and Jardinieres \$1.50

100 glass bowls of colored fancy glass and earthenware jardinieres, new merchandise, first quality. Too wide range for description.

Clearance Sale Price \$1.50

\$6.00

Fruit Sets

\$3.95

Glass bowl and candlesticks to match, bowls having black base filled with imitation fruit and colors to match bowl and candlesticks. Regular \$6.00 set.

Clearance Sale, \$3.95

DOWNSTAIRS SHOE DEPARTMENT

January Clearance Prices On

1500 PAIRS STRAPS, PUMPS, OXFORDS

Styles and sizes for everyone. Our greatest shoe sale—and we have had some big ones. You will find—

Fancy Strap Pumps in satin and patent.

Patent Cross Straps.

Patent Cut-Outs.

Black and brown satin Cut-Outs.

Sport Oxfords.

All Style Heels—Turn and Welt Soles.

The Price For One Pair



1500 Pairs
Pumps and Oxfords

\$2.95
Pair

DOWNSTAIRS STORE

Offers 3 Lots of New

SPRING HATS

at Greatly Reduced Prices

NEW SPRING

HATS at

\$5.95



Of Fulle silks and changeable silks. The colors are grey, rose, blue, tan and black, with flower trimming, and some with silver cloth facing.

NEW SPRING

HATS at

\$6.95

These are of straw and silk combinations; clever models with straw flower trimming, tans, changeable moire trimming, small shapes, turbans, pokes—the very latest creations.

1 Lot of Trimmed and Untrimmed

HATS at

\$1.00



A final clearance of all winter hats in our downstairs store.

Instantaneous HEAT

Absolutely Odorless

Will Heat Two Large Rooms for

3/4c an Hour

Hawk Space Heater

\$10.75

ELWOOD GAS APPLIANCE CO.
The Home of the Occidental Gas Range
227 East Broadway Corner Louise St.

VOTERS IN FAVOR OF SEWER BONDS

Precinct Workers' Report At Meeting Show Sentiment Endorses Project

Sentiment in favor of the sewer bond issue is strong in practically every precinct in the city, according to the reports turned in by the precinct captains and their workers at the luncheon that was held at noon in the First Methodist church today. All the precinct captains told of the progress that has attended their canvass shown that the number of voters in favor of the bond issue will be sufficient to put the project over with a sweeping majority, basing their conclusions on the answers given to the questions put to them by the workers.

In order to insure the voters reaching the polls on election day, January 8, a committee, headed by M. Walters, of Barnum & Walters, 200 East Broadway, will arrange a schedule for the automobiles that have been placed at the disposal of the Glendale Realty Board's sewer committee for the election, and by this means every supporter of the bonds will be taken to the polls to cast his or her vote. Mr. Walters will announce the schedule at the luncheon that is to be held at the First Methodist church on Friday of this week.

In view of the fact that the polls open at 6 a. m. and remain open until 7 p. m., an effort will be made to have all commuters who work in Los Angeles cast their votes early in the morning, and it is also urged that as many voters as can arrange to do so cast their votes early in the day, so that the bond workers may know where their strongest efforts will be needed during the afternoon.

The office of each precinct captain will be the headquarters of that particular precinct on election day, and voters should save the list of precinct captains' names that is published daily in The Glendale Evening News in case they have to communicate with the captains on any point in connection with the bond election.

Every automobile owner and every householder is urged to obtain the stickers that are to be had at the Glendale Realty Board's office and to display them prominently on their cars and on their houses. J. M. Boland, 218 West Broadway, also has a supply of these stickers for those who desire them.

WANT FULL TIME HEALTH OFFICER

Exchange Club Endorses Plan of Dr. Kellogg, Speaker at Luncheon

The Glendale Exchange club today noon at its weekly luncheon at the Egyptian Village went on record favoring a full-time health officer for Glendale, following an address by Dr. W. H. Kellogg, member of the State Board of Health and director of hygiene at the state laboratory at Berkeley and professor of preventative medicine of the University of California.

Dr. Kellogg outlined how a city like Glendale may secure the benefits of science along public health lines, pointing out the scientific advancement of the last three years and stressing the absolute necessity of the city of Glendale having a public health officer on full time pay.

It was following this talk by Dr. Kellogg that the club endorsed the plan to establish the full time health office here. Dr. G. Kaemmerling is now employed by the city as health officer on part time pay.

Plans for changing the luncheon date of the Exchange club from Wednesday noon to Tuesday noon were discussed today, with the result that sentiment was shown in favor of the change. Definite decision as to the change probably will be made at the luncheon next week.

Music was furnished today by Leland T. Abbott, who sang "On the Road to Mandalay" and "O, Sole Mio," accompanied by Mrs. Abbott at the piano.

Highway Improvement Will Cost Million

TOKIO, Jan. 2.—The one probable adoption of plans for highway improvement in road district No. 25 to cost \$492,000 has been made by the county board of supervisors.

Six and a half miles of the highway will be of new construction. The entire highway which will connect Bakersfield with Taft, Maricopa and Fellows, will be eighteen feet wide. Elimination of three miles of dangerous curves will be managed by the building of three and a half miles of state highway, and the ill-fated turn known as "Death's Curve," will be remedied.

Arson Squads Guard Schools After Fires

SAN FRANCISCO, Jan. 2.—Arson squads were guarding San Francisco's 130 schools today, following the burning of schools recently in Oakland, Alameda and other central California cities, which have been terrorized by an alleged giant arson plot.

In schools where pupils sleep, special patrols will be made at night, Fire Chief Thomas Murphy announced today.

PROPOSE STREET WIDENING PLANS

Engineer Dupuy's Recommendation on Central Ave. Read to Council

In connection with the proceedings of the city relative to the widening of Central avenue from Lexington avenue south to San Fernando road, the following letter from City Engineer Ben S. Dupuy was read to the City Council this morning:

It deals with the situation relative to the Congregational church at the corner of Wilson and Central avenues. After considering the matter, the council instructed City Attorney Ray L. Moorow to make the proceedings conform with the recommendations of the city engineer.

The letter follows: "I have checked the proposed widening of Central avenue, north of Broadway, and find that Central north of Broadway is dedicated sixty feet in width. The distance from the property to the curbing on the east side being uniformly fourteen feet and the curb and sidewalk on the west side being the entire property that has not been dedicated to the city. The curb on the west side varies from 33.6 feet at Broadway to 32.3 feet at Lexington, from the center line of the dedicated street, sixty feet in width.

"I believe it is the intention to have the roadway 70 feet in width between curbs south of Broadway with a distance of 15 feet from the curb to the property line on each side. North of Broadway I recommend that the distance from the curb to the property line on the east side be established at fourteen feet, the width between curbs at seventy feet, and the distance from the west line and the curb twelve feet. This will make the dedicated street north of Broadway, ninety-six feet in width, set sidewalks on the east side uniformly ten feet back and set the sidewalk eight feet, 4 1/2 inches back at Broadway, ten feet, 7 1/2 inches at Lexington, and ten feet back at Wilson, adjacent to the Congregational church.

"The distance from the curb to the inside edge of the sidewalk between Broadway and Wilson, on the west side is fourteen feet, and from Wilson to Lexington is thirteen feet at the present time.

"I also recommend that the distance from the curb to the property line in front of the Congregational church be reduced to nine feet, and that none of the land upon which the front of the church is located be included in the condemnation. This will make a three foot jog in the property line at the Congregational church, leaving the front of the church extending three feet into the 96-foot street. This will make it necessary to change the entrance and cut off all of the steps that are at present located outside of the main walls of the building."

A protest by property owners on

PARKERS RETURN FROM LONG TRIP

Arrive Home After Absence Of Four Months; Glad To Reach City

Arriving home at 8 o'clock last night via the Southern Pacific from New Orleans, Mr. and Mrs. A. M. Parker of 135 North Louise street declare that Glendale is the best place they have seen in all the 10,000 miles they have traveled since they left on September 1 of last year.

Completing the long trip on New Year's day, they were just four months on the road. In that time they traveled the length and breadth of the United States, visiting relatives and friends in many places and revisiting spots precious in memory.

Mr. and Mrs. Parker left Glendale for San Francisco and continued on up to Portland, Seattle, Victoria and Vancouver, B. C., and by way of Lake Louise to Minneapolis, which they reached on September 12.

There they spent some time, then went on to Waterloo, Iowa, where they visited for three weeks with their son and family, Mr. and Mrs. Herbert Parker, who formerly lived in Glendale.

It was a beautiful time of year, Mr. Parker states, the leaves turning and a hint of autumn in the air. One could not have found a better month than September to rekindle memories of years in the east.

From Waterloo they went on to Marshalltown, their old home, and from there to Chicago, where they stayed two weeks, visiting Mr. Parker's cousin, Miss Grace Leach.

They then went on to Cuba, New York, where they spent the two weeks around Thanksgiving, having their turkey with Mr. Parker's sister and family, Mr. and Mrs. J. C. Leggett, Mr. Leggett being a prominent lawyer and banker.

From Cuba they made side trips to Buffalo and other points, including Angelica, a quaint and beautiful town, where his father and mother were married seventy years ago.

On December 1 they went on to Cincinnati, where they spent the time until December 28 with their eldest son and family, Mr. and Mrs. Lawrence Parker. It was on this latter date that they left for New Orleans, where they stopped at the famous Mont Leon hotel, in the French quarter.

Mr. Parker states that he has no definite business plans as yet but hopes to be active in the life and growth of the city he is now satisfied is growing faster than any other in America.

Use News Want Ads for results.

Central avenue north of Lexington against widening was received, but as the proceedings do not include this territory, no action was taken on it.

"Glendale Said It With Flowers"

AT PASADENA and Won Sweepstake Prize and Two Firsts

All Glendale is proud of the two wonderful prize-winning floats in the Rose Tournament Tuesday, and we certainly are proud, for we furnished

ALL THE FLOWERS

used in both the Glendale Floats

No order too small or too large

for the

GLENDALE FLORIST

Phone Glen. 1155 120 So. Brand

News Want Ads For Profitable Results

MID-WINTER SALES



Don't get excited over a mere price! Reserve your enthusiasm for what the price buys. In the midst of "sale" prices everywhere, opportunities here are unique because the fashions they involve are unusual.

The Fashion Center

202 South Brand

TONIGHT AT 6 O'CLOCK

We Will Have a Large Supply of

Tournament of Roses Books at 25c Each

(They are 35c in Los Angeles)

We Now Have a Big Selection of City of Glendale and B. P. O. E.

Float Post Cards

ROBERTS & ECHOLS DRUG STORE

Phone Glen. 195—We Deliver

102 E. Broadway Glendale, California

January Sale of High Grade Men's and Boys' Wear, Including Hart Schaffner & Marx and Clothcraft Clothing

SALE STARTS THURSDAY, JAN. 3

HART SCHAFFNER & MARX SUITS

Regular \$40.00, now.....\$29.75
Regular \$45.00, now.....\$33.50
Regular \$50.00, now.....\$36.00
Regular \$55.00, now.....\$41.50
Regular \$60.00, now.....\$43.50
Regular \$65.00, now.....\$48.00

CLOTHCRAFT SUITS

Regular \$25.00, now.....\$18.50
Regular \$30.00, now.....\$22.50
Regular \$35.00, now.....\$27.50
Regular \$40.00, now.....\$29.75
Regular \$45.00, now.....\$33.50



Copyright 1923 Hart Schaffner & Marx

25% off OVERCOATS 25% off

We have a large and varied assortment of plain, colored and fancy plaid back, all wool overcoats, ranging in price from \$20.00 to \$125.00. During this sale we will allow a discount of 25% off any overcoat in stock.

SHIRTS

Reg. \$2.00, now.....\$1.45
Reg. \$2.50, now.....\$1.85
Reg. \$3.00, now.....\$2.15
Reg. \$3.50, now.....\$2.45
Reg. \$4.00, now.....\$2.95
Reg. \$5.00, now.....\$3.75
Corresponding Reduction On All Shirts Over \$5.00

HATS

Reg. \$5.00, now.....\$3.75
Reg. \$6.00, now.....\$4.25
Reg. \$7.50, now.....\$5.45
Reg. \$8.00, now.....\$6.00
Reg. \$12.50, now.....\$9.00

WOOL AND FLANNEL OUTING SHIRTS

in plain grey and khaki and fancy plaid colors
Reg. \$4.50 and \$5.50 now.....\$2.95
Reg. \$6.00 and \$7.00, now.....\$4.85

BATH ROBES AND DRESSING GOWNS LESS 25%

SWEATERS
Reg. \$6.00, now.....\$4.75
Reg. \$7.50, now.....\$5.25
Reg. \$8.50, now.....\$6.75
Reg. \$10.00, now.....\$7.50
Reg. \$12.50, now.....\$8.50
Reg. \$15.00, now.....\$10.50
Reg. \$20.00, now.....\$14.50

UNDERWEAR UNION SUITS
Reg. \$2.00, now.....\$1.45
Reg. \$2.50, now.....\$1.85
Reg. \$3.00, now.....\$2.25
Reg. \$3.50, now.....\$2.85
Reg. \$4.50, now.....\$3.25
Reg. \$5.00, now.....\$4.00
Reg. \$6.00, now.....\$4.75

Boys' Department

BOYS' SUITS
Complete with 2 pairs of knickers and belt to match

BOYS' BLOUSES AND SHIRTS
Kaynee Quality Sizes 4 to 15
Reg. up to \$1.50, now 70c each, 3 for \$2.00

LESS 25%
COVERALLS AND OVERALLS
Regular \$1.25, Special 75c Each

BOYS' CAPS
Reg. \$1.50 and \$1.75 Now 95c

BOYS' BELTS
Regular 75c to \$1.50 clearance 50c Each

BOYS' SKULL CAPS
Fancy colors, some with roll edges in Glendale school colors.
Reg. 35c and 50c Now 20c each

BOYS' SWEATERS
All wool, pullover and coat style
Reg. \$5.50, now.....\$3.85
Reg. \$6.50, now.....\$4.25
Reg. \$9.00, now.....\$6.75

WASH SUITS
Kaynee Quality All 1/2 Price

WEBB'S MEN'S SHOP

Telephone 3200

105 South Brand, at Broadway Open Saturday Evening

**ZANTIPPE FINDS
ROUTE TO EGYPT**

August September's Kinship
to Foreigners Proven
By Discovery

Professor Xavius Zantippe, in-famous scientist and presidential candidate on the Mead ticket, has made the crowning discovery of his career, to-wit:
A non-water route to Egypt, via Tujung.



Although this great scientific work will not be published until after the learned professor's death, he has been persuaded to allow the newspapers to print portions therefrom, and the following is quoted as an example of the professor's style:

Zantippe's Style
"Noting in the general sociology, archaeological and meteorologic lay-out of Tujung a condition peculiarly comparable with that of ancient Egypt, it dawned on me that there must at some remote time have been a connection between these two great states, and I therefore dispatched to the scene my black slave, Percy Pop-Eye, with full powers to arbitrate or excavate, as the case might be.
"Mr. Pop-Eye at first tried ar-

**Agreement For Sewers Is
Trade Benefiting Both
Cities Making Contract**

The agreement and contract between the City of Los Angeles and the City of Glendale, providing for a sewer connection to the Los Angeles sewer system, really represents a trade between the two cities.

Glendale wanted to build a sewer system but had no place to dispose of the sewage without building an independent outfall sewer to the ocean at a great cost and a fight with the beach cities about getting a place to dispose of the sewage into the ocean.

Los Angeles already had an ocean outlet for disposal of sewage and is building a disposal plant, a submerged outlet into the ocean a mile from the shore, and a larger outfall sewer from the city of Los Angeles to the ocean for which \$12,000,000 bonds have been voted. Los Angeles also needs further extensions of this main intercepting and outfall sewer but has no funds at present to build them. One of these is the proposed line up the San Fernando valley serving the territory naturally draining into this valley, including Glendale.

Each city had something to trade. Glendale offers to build the section of the San Fernando intercepting outfall sewer from Sixth and Utah streets to Aviation drive near Doran street, as her part of a trade for the use of the outfall sewer from Sixth and Utah streets to the ocean, the use of the Los Angeles sewage disposal plant, the submerged ocean outfall and the right to discharge sewage into the ocean.

Both cities are benefited by the trade. Los Angeles gets the needed extension up San Fernando valley without waiting for another bond issue. Glendale gets a chance for the immediate construction of a sewer system, a permanent solution for sewage disposal, a saving in cost over a possible separate disposal plant and its operation and maintenance, or a saving in cost of constructing an independent outfall to the ocean.

A few have raised the question, "Why should Glendale build a

sewer large enough for Van Nuys, Lankershim and the other territory up the San Fernando valley above Glendale?" Then why should Los Angeles give up a part of its outfall capacity, sewage disposal capacity and ocean outfall privileges to Glendale? If Glendale would only agree to build a sewer to Sixth and Utah streets, of a size to carry only the ultimate sewage flow of Glendale, then Glendale would not have had anything to trade. If the ocean were at Sixth and Utah streets, then Los Angeles would not have had anything to offer in the trade. Glendale builds only a certain intercepting and outfall sewer for the use of the whole system to the ocean and the use of the disposal works.

The upper San Fernando valley communities included in the corporate limits of Los Angeles are helping pay for the Los Angeles outfall sewers and will also have to pay, either upon another bond issue on the whole city or by improvement district methods, to extend the San Fernando intercepting outfall sewer from Aviation drive before they can use it.

Glendale will derive the greatest immediate benefit from the trade, as it will be the largest territory in population served by this sewer that can immediately use the sewer upon completion of its sewer system. The trade does not limit the amount of sewage from Glendale except that when the capacity of the sewer is reached, neither city shall make further connections. The designed capacity is sufficient to provide for a growth for the entire valley for thirty to forty years and perhaps a longer period.

This is a good trade for Glendale and the agreement should be ratified by the voters on January 8, 1924.

WHERE HE BELONGS



INVENTS PIPE

Corrugated pipe for steam lines has been designed by a Polish inventor.

FINGERNAIL GROWTH

A Swiss scientist has figured that a man grows 27 yards of fingernails in 50 years.

SAVES SOAP SCRAPS

A dish washing mop in which is a bag to hold scraps of soap has been patented.

**New Year Issue
Of News Weighed
Over Five Tons**

For those who like "figgers," the story of the New Year's edition of The Glendale Evening News is more than interesting.

Slightly over 10,000 copies of the 72-page issue were printed, containing more than 110,000 lines of type, 8 point face, 12 ems wide. It took five and one-half tons of white print paper, 70 inches wide and 60 miles long to complete the edition. If the pages had been printed end upon end on the highway they would have advertised Glendale from here to San Francisco.

But in the printed form on paper The Glendale Evening News is being sent by readers to all parts of the globe and it is estimated that the January 1 record of this city's achievements will be read by no less than 50,000 people.

**St. Mark's Will Hold
Annual Parish Meet**

The annual parish meeting of St. Mark's Episcopal church will be held Thursday, January 3, in the Guild hall, when the reports of the officers of the church, covering the past year, will be submitted and the election of the vestry will be held. The business meeting will be preceded by dinner, which will be served at 6:30 o'clock.

Dr. Charles S. Reifsmeyer, who was scheduled to deliver an address on Japan, has been forced to cancel all of his speaking dates, and his place will be taken by Rev. Arthur Cotter of the McKinley Industrial Home at Gardena, who will speak on China.

PVT. SCHNEIDER HERE

Private W. A. Schneider of the United States marine corps detachment at the naval destroyer base in San Diego visited his father, William Schneider, ye host at Glendale Tavern, 1120 South San Fernando road. And there

**JOY REIGNS AS
OLD YEAR DIES**

Happy Mourners Exhibit
Hilarity in Streets
Of Glendale

By GIL A. COWAN
Of The Evening News Staff.

New Year's eve in Glendale is becoming quite celebrated.

Why, the writer remembers the day when—

Well, to make a long story short, there was nothing doing.

But as the years wear on and the city grows larger, with its effervescent youth finding less cause to bubble forth on other occasions, New Year's eve seems to offer that opportunity.

As the Old Year passed out and the New Year was born the crowds from the theatres and cafes began to "cut loose" and let the town folk know of the fact.

Lots of Noise
Barking, snapping, banging exhausts of motor cars, a thousand and one horns and bells, joined in the bazoo and babble of voices, indicated that no small part of the populace was awake.

The all-night restaurants were jammed with hilarious youngsters, who had neither the price nor inclination to be among those present at the dinner dance places.

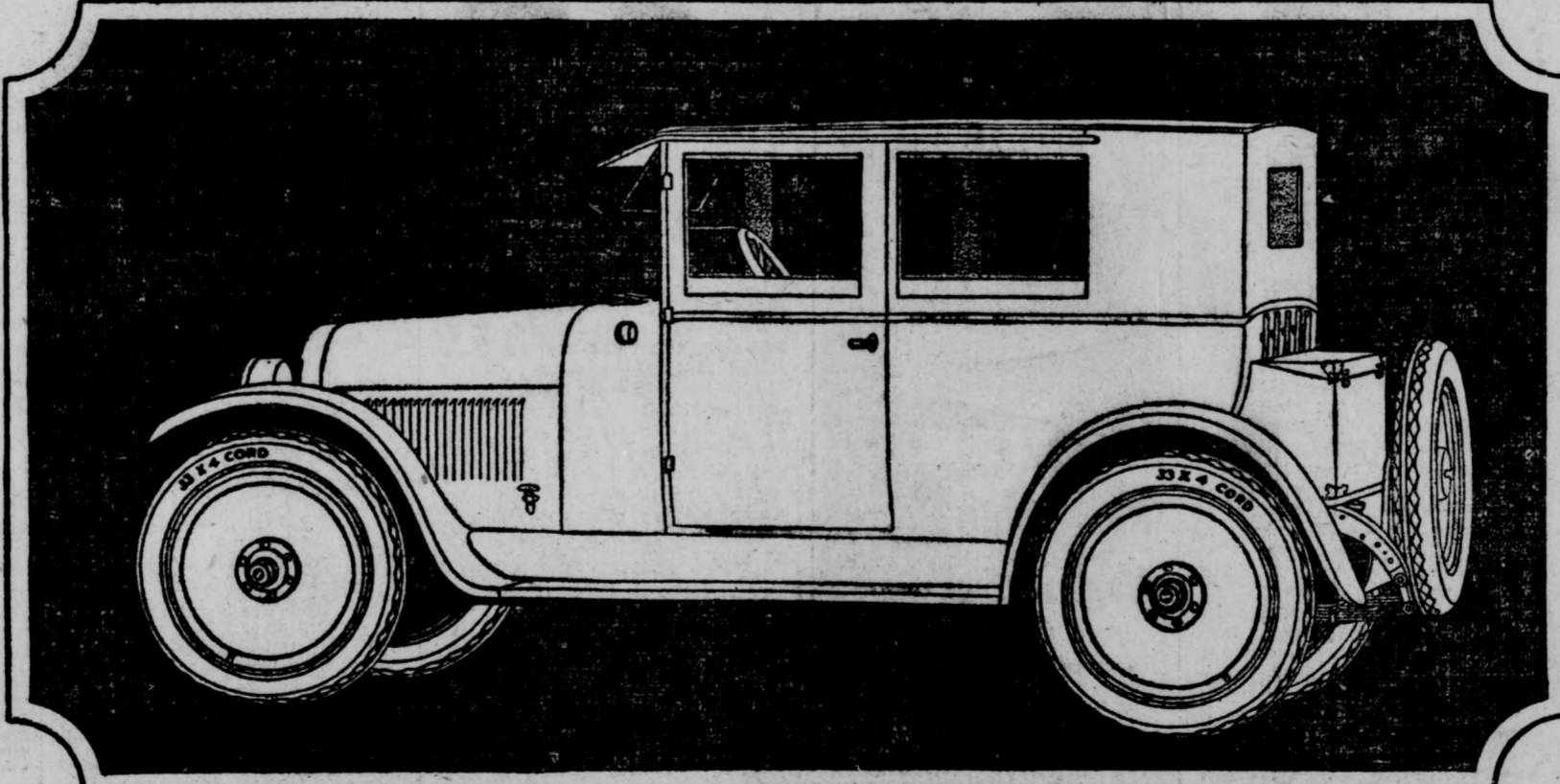
Indeed, it reminded the writer of a New Year's eve in San Antonio, Tex., some six or seven years ago, although there was lacking considerable of the liquid cheer which the old days boasted.

Slightly Moist
At the same time it appeared slightly moist in Glendale, perhaps due to the rainfall of the evening. Be that as it may, the celebration was harmless and happy, although we can believe that few good resolutions were long-lived.

And so the New Year passes on into a twelve-month life of work with its rewards.

Let's go!
was such a crowd there that ye host's son had to aid in their entertainment.

NASH



A Great Value
at This Low Price

\$1515

f. o. b. Glendale

Four-Cylinder Carriole

Five Passengers

Five Disc Wheels and
Nash Self-Mounting Carrier
\$25 additional

Ranks First By Comparison!
The Nash Four Carriole

Examine this car thoroughly from tires to top! Study its points of superiority. You'll realize how impressively it stands out as the leader of its price class.

Start with the body. Mark its smart sweeping lines; its all-metal panel construction; its beautiful color combination.

Observe the smartly-fashioned trunk at the rear guarded by nickel bars.

Notice that the broad double-catch doors of the car are rendered weather-proof and air-tight by mohair storm strips lined with rubber tubing.

Heavy coiled springs in the deep cushions pro-

vide unusual riding comfort. And the seating arrangement allows you plenty of room.

Frosted silver-finish fixtures and a score of convenient appointments reflect Nash thoughtfulness and good taste.

But of even greater appeal than the car's striking beauty is its smooth, responsive behavior. Under all road conditions it travels as briskly and as quietly as a car with more than four cylinders.

Once you've inspected and driven the Carriole you will favor it above all others in its field. **Test it out today!**

**Unusually Attractive
Time-Payment Plan**

New Models

SIX PRICES UNCHANGED

Roadster	\$1475
Five-Passenger Touring	1475
Seven-Passenger Touring	1645
Sport Car	1920
Victoria (Enclosed)	2282
Five-Passenger Sedan	2338
Four-Door Coupe	2385
Seven-Passenger Sedan	2495

Delivered Here

FOUR PRICES UNCHANGED

Roadster	\$1125
Five-Passenger Touring	1145
Sport Car	1435
Carriole (5-Pass. Enclosed)	1515
Sedan	1695

Delivered Here

**NASH SALES
COMPANY,
INC.**

Glendale and San Fernando
Valley Dealers

Sales Rooms and Service
Station at 112 S. Maryland
Near Broadway

Glendale, Calif.
Phone Glendale 1678

Nash Sales Company, Inc., 112 So. Maryland, near Broadway.

Open Evenings Till Nine

The Gateway GLENDALE'S NEWEST THEATER SAN FERNANDO ROAD & BRAND BLVD.

MEET ME AT THE GATEWAY, 6:45 AND 9:00

TODAY ONLY

VAUDEVILLE

also —The Better Kind

A Feature of Vital Importance

"IS DIVORCE A FAILURE?"

TOMORROW—THURSDAY

THE GREATEST MYSTERY PLAY EVER FILMED

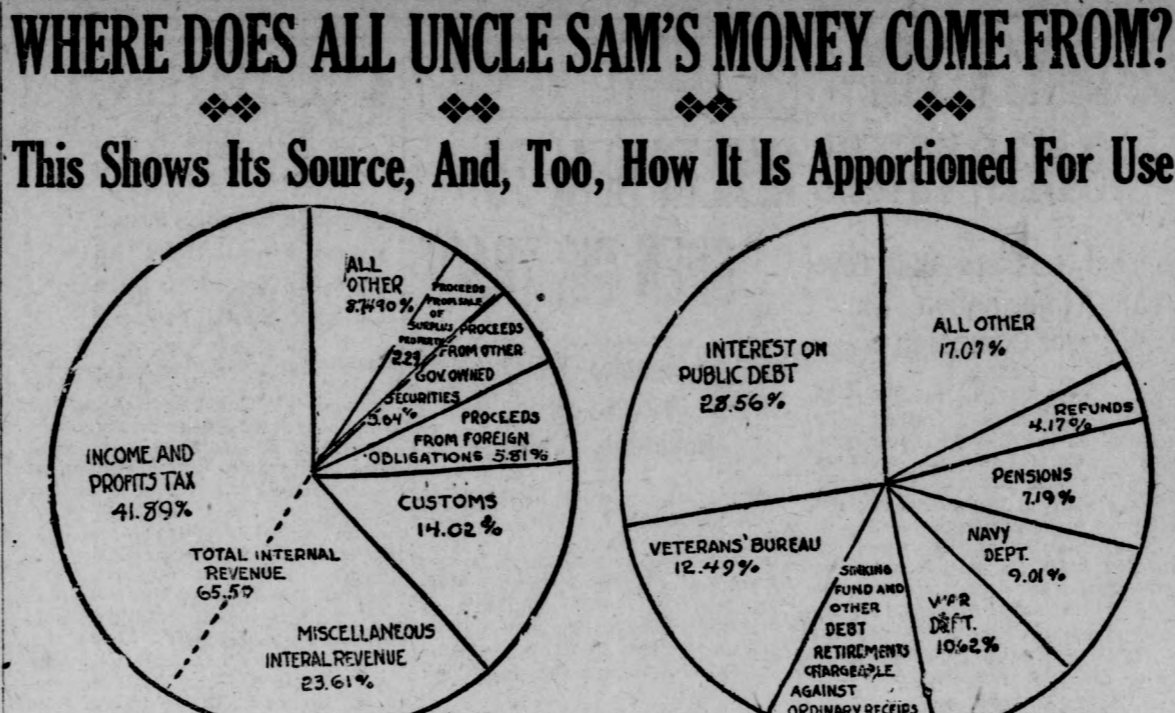
"THE ACQUITTAL"

BURBANK

VOTE ON SCHOOL BONDS DECISIVE

Era of Development Seen As Expenditure of \$120,000 Is Authorized

Carrying of the \$120,000 school bond election by an overwhelming majority presages for Burbank a new era of development, in the opinion of realtors. While the vote cast was not large, it was decisive, 175 for to 7 against being registered on the \$100,000 grammar school issue, and 172 for and 8 against on the \$20,000 high school issue.



Glendale Theatre

Wm. A. Howe, Lessee and Sole Manager

MATINEE, 2:30 EVENING, 7:00 AND 9:00

THE WORLD'S SWEETHEART

MARY PICKFORD

More Delightfully Beautiful and More Wonderful Than Ever Before, In

"ROSITA"

WITH HOLBROOK BLINN A SPANISH ROMANCE An Ernst Lubitsch Production A United Artists Picture

TRADE MARK

Robinsons

Semi-Annual Sale

of Manhattan and Wilson Bros.' Fine Madras and Other Plain and Colored Shirts

Begins Thursday, (Tomorrow)

Largest Stock Choicest Selection

\$3.00 Shirts Reduced to.....\$2.25
 \$3.50 Shirts Reduced to.....\$2.65
 \$4.00 Shirts Reduced to.....\$3.15
 \$5.00 Shirts Reduced to.....\$3.85
 \$6.00 Shirts Reduced to.....\$4.85
 \$7.00 Shirts Reduced to.....\$5.45
 \$8.00 Shirts Reduced to.....\$6.15
 \$10.00 Shirts Reduced to.....\$7.65

Robinsons 114 S. Brand Open Sat. Eve.

All of Her Sons Die From Violent Causes

PHOENIX, Jan. 2.—That Gov. married four times and all of her sons the victims of violent deaths before they reached the age of 25—this was the tragic story heard by the judicial settlement of the \$35,000 estate of Mrs. Frances E. Sinclair of Skaneateles.

The first steps are now being taken to relieve the situation, the outlying districts being canvassed to see what additions will be necessary, states J. J. King of the school board.

With such a decided vote cast, it is obvious to anyone that the obstructionists are in a non-workable minority, and progress along many lines will follow this surprising vote.

Kent Buys Corner
 Another important development is seen in the acquisition by Roy L. Kent of Glendale of the valuable C. E. Talley corner of San Fernando boulevard and Tujunga avenue at a price of \$46,500.

ZANTIPPE FINDS ROUTE TO EGYPT

August September's Kinship to Foreigners Proven By Discovery

(Continued from Page 1)

the great mystery that has baffled science is therefore solved. The resemblance between the Tujungans and the Egyptians is made clear. And at one and the same time it is proved that Hon. August September is a direct lineal descendant of King Tut, thus automatically eliminating him from the presidential race, as the constitution is explicit regarding aliens and Mr. September is unable to produce proof that he or any of his ilk ever took out naturalization papers.

WASHINGTON, D. C., Jan. 2.—One-fifth of the revenue of the United States goes for the support of its army and navy.

More than one-fourth—28 per cent—goes to pay interest on its public debt, the bill for wars.

GIRLS' CLUB WILL MEET AT CHURCH

Christian Circle Will Hold Big Rally Thursday In New Quarters

The beautiful new Glendale Presbyterian church, at the corner of East Harvard and South Louise streets, has been selected by the Christian Circle club, and the announcement of this new place of meeting carries with it an invitation to all Glendale girls to attend a big rally Thursday night.

Mrs. Wolff's Body To Rest In Native Soil

ATLANTA, Ga., Jan. 2.—The body of Mrs. E. P. McDowell Wolff, one of the South's most prominent women, founder of the Children of the Confederacy in the South and the Children of the American Revolution, who died in Sao Paulo, Brazil, November 18, now is on its way to America for burial, according to cablegrams reaching relatives of hers in Atlanta.



MISSIONARIES TO TALK AT CHURCH

Workers In China Field Will Tell Experiences At Prayer Meeting

A rare opportunity will be offered to the people of Glendale this evening at the Glendale Presbyterian church. Dr. and Mrs. Howard Taylor of the China Inland Mission will be present and speak at the prayer meeting.

HEALTHIEST VILLAGE

LONDON, Eng., Jan. 1.—Everington, in East Yorkshire, stakes its claim as the healthiest village in England, according to its vicar, the Rev. Maistre. Rev. Maistre says he has not had a funeral in his parish of 300 inhabitants for over three years.

1924

Let's make 1924 a banner year for permanent buildings in Glendale—the fastest growing city in America. We are prepared to do our part by supplying you with the best material for permanency known to the building trades—wet mix poured Concrete Hollow Tile.

CONCRETE BRICK & TILE

440 So. San Fernando Rd., Glendale, Calif. Phone Glendale 2440

High Sierras Lacking Snow This Season

NORTHFORK, Jan. 2.—There is less snow in the higher levels of the Sierra National Forest than ever before according to M. A. Benedict, forest supervisor.

ARTIFICIAL LUMBER

Attempts are being made to make an artificial lumber from the hemp waste of cordage factories.

SAYS ZANGWILL'S VIEW ON U. S. SUPERFICIAL

SPRACUSE, N. Y., Jan. 2.—Israel Zangwill, noted Jewish writer and lecturer, who has been caustically criticizing the United States, "doesn't know what he's talking about," according to Mrs. Joseph Mazell of this city, cousin of Zangwill.

Autos Stop in Road At Scientists Command

PARIS, FRANCE, Jan. 1.—The editor of the Paris newspaper, La Liberté, says he has seen a French electrical engineer bring to a halt on the streets any car designated by the apparatus took his visitor to a balcony overlooking the street and asked him to choose an automobile on which to experiment.

RELATIVES KILLED AT SAME RAIL CROSSING

MONTEREY, Ind., Jan. 2.—Four years ago the wife and two children of Albert Fauststitch were killed when they were struck by an Erie railroad train, while walking along the tracks near here.

Fanset DYE WORKS

None Better

COURT SHOP NO. 1, 233 EAST BROADWAY, PH. GLEN. We Own and Operate Our Own Cleaning Plant.

BURIED AFTER 12 YEARS

PITTSBURG, Kan., Jan. 2.—Unburied for more than twelve years since her death which occurred accidentally on August 12, 1911, the body of Mrs. Mary W. Everheim has at last found a final resting place. It has been interred in a Pittsburg cemetery when relatives at last compromised and settled the bickerings over a burial place, which has kept the body in an undertaker's receiving vault since 1911.

VALVE TREE AT \$450

ST. PAUL, Minn., Jan. 2.—Mr. and Mrs. Michael Kellner of this city are asking \$450 for a tree which adorns the front yard of their home, in a suit filed by them Friday in Ramsey county district court against the Thompson Yards, Inc. The suit was filed by T. A. Alexander as their attorney.

Movie-Struck Warned Away From Hollywood

LOS ANGELES, Jan. 2.—"Don't try to break into the movies in Hollywood."

That is the nucleus of a sticker printed by the Hollywood Chamber of Commerce, and it will be broadcast throughout the nation to discourage romantic girls and boys, who, according to reports, really should be in grammar or high school.

CUTS-SORES VICKS VAPORUB

Cleanse thoroughly—then, without rubbing, apply—

VICKS VAPORUB

Over 17 Million Jars Used Yearly

WATCH FOR THE OPENING OF GLENDALE'S NEWEST INDUSTRY AT 226 SOUTH BRAND BLVD.

BERKELEY, Calif., Jan. 2.—"Synthetic" men who will result from the process of gland transplantation are an impossibility, in the opinion of Dr. T. C. Burnett, associate professor of physiology at the University of California.

"New men cannot be made from old men, nor can a man be made over out of various factors from other people," he said, in contradicting the prophecy of Dr. Max Thorek, made in a lecture before the Royal Surgical Academy of Rome, that synthetic men would be a result of this process.

Happy New Year

New Pianos \$6 DOWN \$6 per Month

We can now sell you a good piano on the above unusual terms. Our arrangements with large eastern manufacturers enable us to offer for sale 1000 pianos on this plan. Why rent any longer? You can own your piano in a short time without feeling it.

The Piano Exchange

FRANK E. BROWN, Mgr.

112 West Broadway