

F

279

C4C5





CHARLESTON, S. C.

ILLUSTRATED.

INDELIBLE PHOTOGRAPHS.

Copyright, 1892, by A. Wittemann, 67 & 69 Spring Street, New York.



CHARLESTON HARBOR



ST. MICHAEL'S CHURCH, SEEN FROM WASHINGTON SQUARE.

NEW YORK.



SOUTH BATTERY.



BUST OF GILMORE SIMMS—SOUTH BATTERY.



CITY HALL

FRANCIS H. BROWN, PHOTOGRAPHER
123 N. 3rd St. PHILADELPHIA, PA.



Custom House.



CATHEDRAL CHURCH, 1690-1880.



EAST BATTERY



St. Philip's Church

Pitt Street - Wilmington, Delaware



VIEW FROM ST. MICHAEL'S STEEPLE.



LOWEY MARKET.



St. Philip's Church, (S.C.)

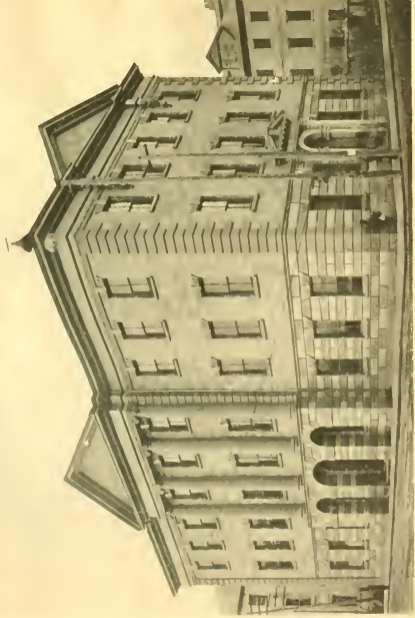


HALL OF GERMAN ARTILLERY
GUARD HOUSE AND CITADEL.

CHARLES DE LIOWARD
MASQUÉ TOWER



FRONT VIEW.



COURT HOUSE.



ENGLISHTOWN FROM ST. MICHAEL'S STREET.



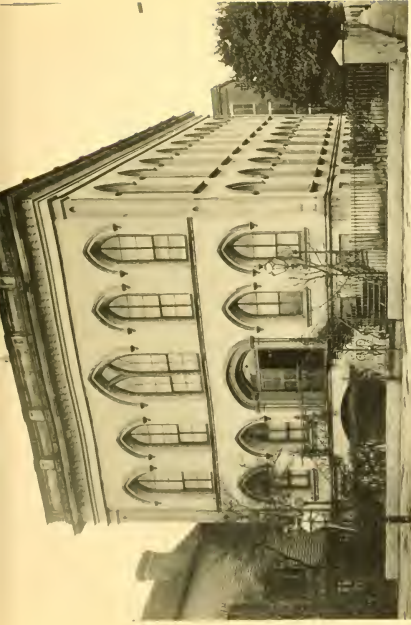
TRAMP STEAMER LOADING COTTON AT KERR'S WHARF.



KING STREET.



Wool Processing, East Bay, Sydney.



FURNACE AND WAREHOUSE, 100 SOUTH STREET.



COR. FURNACE AND WAREHOUSE, 100 SOUTH STREET.
MURKIN AND BROTHERS' OFFICE.



FORT MONROE MEMORIAL—SOUTH BATTERY
TO THE COURAGE OF FORT MONROE FOR THE YEAR 1870



GRANT MONUMENT, METHODIST CHURCH

1905





SOUTH BATTERY.



CENTENARY M. E. CHURCH - WENTWORTH STREET



AUSTIN EVE'S CABIN



DEWEY RESIDENCE

BROAD STREET.

TRINITY BUILDING

CALHOUN STREET
TOWARD
KING STREET



HIGH SCHOOL



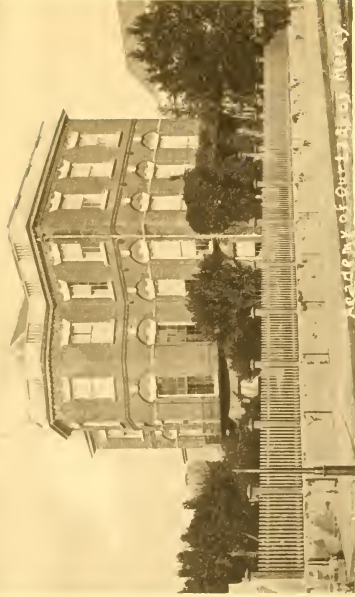
WILSON MANUFACTURING, COTTON AND GRAIN BLDG.



OLD HOUSE EAST BAY AND SOCIETY STREETS



PEIRCE'S ACADEMY.



Academy of Our Lady of Mercy



Scotch Presbyterian Church



SECOND PRESBYTERIAN CHURCH WALDEN VERMONT



ORPHEUS HOUSE.



CHARLESTON COLLEGE



CHARLESTON COLLEGE- MAIN ENTRANCE.



DEBRIS OF EARLY 19TH CENTURY INTERIOR OF BAKER RESIDENCE, 130 YEARS OLD,
LANSDOWNE, S. C.



CHARLESTON HOTEL



FORT SUMTER.



IN CHARLESTON HARBOR.



FORT MCPHERSON, SULLIVAN'S ISLAND.



GRAY, OF OSCEOLA, THE SENTINEL CITY,
AT FORT McCLYDE AND FORT TOLSON





CONFEDERATE MONUMENT - MONROVIA, MISSISSIPPI.



A RICEFIELD AND LIVELY



*Small
 woman's portrait
 Keesville*



WILSON ELLIS
 OFFICE BLDG. 1918

A. H. HARRIS
 OFFICE BLDG. 1918

W. H. HARRIS
 OFFICE BLDG. 1918

X 1 2 2





LIBRARY OF CONGRESS



0 014 418 543 2 ●