

## **Historic, Archive Document**

Do not assume content reflects current scientific knowledge, policies, or practices.



62.09

GORDON

AIN SLEY

LIBRARY

RECEIVED

★ MAR 14 1932

U. S. Department of Agriculture

CAMPBELL  
CALIFORNIA

---

GLADIOLUS  
BULBS AND SEEDS

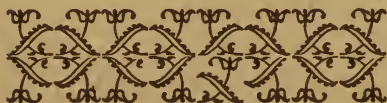
DAHLIAS  
Unusual Bulbs and  
Tuberous Plants...

---

❖ Water Lilies ❖

---

CATALOG FOR  
SPRING • 1932



## TERMS OF SALE—1932

**ORDER EARLY.** Send in your orders as soon as possible after receiving catalog to insure prompt delivery. All orders are acknowledged and shipped as soon as received, as far as possible. For bulbs that require late planting, we will advise date when delivery will be made. All bulbs should be planted immediately after receiving them.

**DELIVERY.** GLADIOLUS will be ready for shipment in December and usually can be supplied until June 1. DAHLIA TUBERS are ready for delivery in March.

**OTHER ITEMS** in this catalog supplied from Dec. 1 until June 1 unless otherwise specified.

**SUBSTITUTIONS.** Kindly state a second choice unless your order is sent early. When no substitution is desired, please make notation on the order blank.

**ORDER BLANKS.** Better and quicker service can be given when the order is plainly written on our special order blanks.

**TERMS.** Remittance should accompany order in the form of bank draft, postal or express money order, or personal check.

**POSTAGE** on delivery charges is paid on all orders of \$2.00 and over. Orders of less than \$2.00, please send 25c to cover postage and packing.

**PRICES.** At prices quoted herein 6 bulbs will be supplied at the dozen rate and 25 at the 100 rate. Less than 6 at an increased rate of 10 per cent over dozen price, except when offered otherwise. As three bulbs of a single variety are very effective when planted together, you may order  $\frac{1}{4}$  dozen of any bulbs of the same value, providing the order is for complete dozen lots. For example, you may group together:

	Per Doz.	
Gladiolus—"Betty Joy" .....	1.00	} 3 bulbs each for 1.00
"    —"Golden Frills" .....	1.00	
"    —"Henry Ford" .....	1.00	
"    —"Purple Glory" .....	1.00	
OR		
Lilium—"Krameri" .....	5.00	} 3 bulbs each for 5.00
"    —"Leichtlini" .....	5.00	
"    —"Speciosum Magnificum" .....	5.00	
"    —"Speciosum Rubrum" .....	5.00	

### DO NOT GROUP TOGETHER BULBS OF DIFFERENT PRICE

Special attention is called to the various collections of Dahlias, Gladiolus, and other bulbs offered at reduced rates.

**GUARANTEE.** All bulbs, plants and seeds are guaranteed to be true to name and in a good growing condition, but I cannot be responsible for results obtained due to soil, climatic, and other conditions beyond my control. Every order receives most careful attention, but mistakes sometimes occur.

**ADJUSTMENTS.** Satisfactory adjustments will be cheerfully made where any error on our part has occurred, if we are notified promptly.

#### MEMBER:

- American Dahlia Society*
- American Gladiolus Society*
- American Iris Society*
- American Peony Society*
- American Horticultural Society*
- Oregon Lily Growers Society*
- British Iris Society*
- British Gladiolus Society*
- Dahlia Society of San Francisco*
- California Gladiolus Society*
- Fellow Royal Horticultural Society*



*Betty Nuthall*

*Gladiolus*

*Jack London*

## TO MY FRIENDS AND CUSTOMERS

**T**HIS, my 1932 Spring Catalog, heralds a noteworthy expansion in the scope and possibilities of my business. Heretofore, this has been largely confined to the rarer and more unusual sorts of bulbs and tuberous rooted plants, and to Holland bulbs for Fall planting. Lovers of fine Gladiolus and Dahlias will be interested to learn that I have acquired the retail bulb and seed business of the Chageda Gardens at San Leandro, California, formerly conducted by Mr. Charles Davis. This purchase includes a choice collection of Gladiolus and Dahlia bulbs, and of Dahlia seeds, produced by a grower well known for the excellence of his stock. In the opening pages you will find listed only the newer creations that have exceptional merit. This will, of course, supplant my former limited offerings in these groups.

Following the Gladiolus and Dahlia sections is an enlarged and revised price list of rare and unusual bulbs and plants as well as seeds of gladiolus. This contains as many illustrations as space permits, many of which have been reproduced from photographs made at my own trial grounds. It is my hope to introduce and popularize as many of these plants as possible. Most of them are real floral gems, which would be hailed with enthusiasm by flower lovers if only they were better known. Cultural requirements are very simple.

Some of the species I offer were formerly found in American catalogs before the embargo on bulb importations; others are entirely new in this country, the stock being grown from seeds imported from many parts of the world. Names and descriptions have been carefully checked for scientific accuracy, and an effort will always be made to maintain this standard. It will be noted that prices on some items have been favorably revised, owing to larger stocks being available. I am constantly growing new sorts from seed, all of which will find a place in future catalogs as soon as large enough to sell. I am confident that my offerings will include a larger number of species than are found in any other catalog in this country.

Enclosed with this catalog is a folder, listing seeds of Dahlias, Iris, Lilies, Perennials, Annuals, and Miscellaneous Bulbs. Please note the prize offer on best Dahlias grown from our seeds.

This is a **SPRING CATALOG**. I will offer a wonderful variety of bulbs for Fall planting in a separate catalog, ready September first. A post card will bring it to you.

# GLADIOLUS

Gladiolus have grown in popularity to such an extent in the last few years that they are now seen in nearly every garden, and no flower will give more pleasure in return for the little care they require. The bulbs may be planted from January until July in California and in other localities as soon as the ground can be worked in the Spring. For early planting full sunlight is desirable, while for late planting a location that is partially shaded during the heat of the day should be selected.

Wonderful improvements in the newer introductions of Gladiolus were noted at the shows this past season; the new varieties in Blues and Violets being much better than the older introductions of the same colors which did not have such clear shades.

**AVE MARIA** (Pfitzer). A blue, nearly as light as Heavenly Blue. Seven or eight blooms open at once on a perfect spike. L. .50 each, 3 for \$1.25; M. .25, 3 for .60; S. .15, 3 for .35.

**BERTY SNOW** (Mair). Large flowers of beautiful lavender. Excellent substance and placement. Eight open at once. Fine exhibition and cut flower. A prize winner. .20 each; 3 for .50; 12 for \$1.50; 25 for \$2.50.

**BETTY JOY** (Bill). Soft, creamy white, flushed La France pink. Strong grower, long flower spikes with 6 to 10 perfect flowers open at one time. Delicately beautiful. .10 each, \$1.00 doz.

**BETTY NUTHALL** (Salbach 1928). Considered by many growers to be the best of Mr. Salbach's introductions. Light coral color blooms of great size, with pale orange throat markings and feathering of carmine. The plants are tall and vigorous in growth, the spikes gracefully carrying six to eight blooms open at a time. It is a good producer, large bulbs usually throwing from two to three separate stalks. Large, .20 each, \$2.00 doz.

**BLUE PEACOCK** (Salbach 1932). The only Salbach introduction of the year. A blue with deep colorings but nearer to true blue than Veilchenblau. A velvety blue blotch overlaid with cream gives the



Giant Nymph

peacock eye for which the flower was named. Large wide open florets, all well placed on the spike. Five or six open and many buds. \$5.00 each.

BREAK O' DAY (Bill). Clear pink blooms with darker throat lines on a good willowy spike. A leading early cut flower variety and very popular. .50 doz.

BYRON L. SMITH (Kunderd). A large wide-open lavender pink with the blooms well placed. .50 doz.

CANBERRA (Errey). A pure deep yellow of one shade on exceptionally tall spikes with 8 or more open at one time. Large, .30 each, \$3.00 doz.

CARMELITA (Diener). A very odd flower of smoky pink, blotched and striped with steel blue. Yellow and slate lip. .50 each, \$5.00 doz.

CATHERINE COLEMAN (Coleman). Tall spikes of large flowers of geranium pink. .15 each, \$1.00 doz.

CHARLES DICKENS (Pfitzer). Clear glowing violet-purple with a velvety blotch on lower petal. Excellent substance, fine placement. Seven or eight open. Awarded first prize in purple class American Gladiolus Society show, 1931. .15 each; 3 for .35, 12 for \$1.00, 25 for \$1.75.

CORYPHEE (Pfitzer). New European variety which has been a consistent winner. Large rose pink florets well placed on a good spike. 8 to 10 open at once. Large, .35 each, \$3.50 doz.

DOROTHY SIMPSON (Salbach 1928). Large beautifully ruffled lilac. Blotch of pale amber with heart-shaped inset of soft purple. From five to six well placed blooms open at one time. Very heavy substance. .20 each, 3 for .50, 12 for \$1.75, 25 for \$3.00.

DR. MOODY (Kinyon). An early variety with clear lavender florets without throat markings. Early, and many open at once. .20 each, \$2.00 doz.

E. J. SHAYLOR (Kunderd). Ruffled. Deep rose pink blooms on a strong spike and one of the best and most satisfactory for the home garden. .50 doz.

ELF (Diener). Lemon yellow when in bud. Open flowers pure white, lip delicate lemon. Large flowers. .15 each, \$1.50 doz.

EMILE AUBRUN (Lemoine). Rose and orange shades with gray overtone. Scarlet and rose blotch on lower petals. .10 each, \$1.00 doz.

GERALDINE FARRAR (Diener). Winner of the first prize for the best blue variety at the American Gladiolus Society convention in New York. A pale lavender with a deep violet spot on the lip. .25 each, \$2.50 doz.

GIANT NYMPH (Coleman). A vigorous growing variety of light rose pink, with creamy yellow throat. Tall and stately. .10 each, .75 doz.

GLADYS PLATH (Diener). An orchid flowering, mallow purple, dark near the edges with a white stripe through each petal. Large crimson spot on the lip. .15 each, \$1.50 doz.

GOLD EAGLE (Austin). A lovely clear yellow which does not burn, fleck or fade in the hottest sun. Vigorous grower, and one of the best listed. .75 doz.

GOLDEN FRILLS (Kunderd). A heavily ruffled prim hybrid of heavy substance. Rich daffodil yellow with a carmine tongue. .10 each, \$1.00 doz.

GOLDEN MEASURE (Kelway). A pure yellow with a golden sheen, which is thoroughly reliable. It is a standard florists' variety and is satisfactory in all sections. .75 doz.

HEAVENLY BLUE (Pfitzer). Large clear delicate lavender blue of great refinement and elegance. Reverse of petals much darker. Long graceful spike, many open. Blooms out to the very tip. Large .20 each, \$2.00 doz.

HELEN WILLS (Salbach). One of the best white gladiolus ever introduced, and named in honor of America's best woman tennis player. A clean, large white, shading to soft canary yellow on the lower petals. Tall, vigorous, and of wonderful substance. A coming cut flower for the florist trade. .15 each, \$1.25 doz.

HENRY FORD (Diener). A clear, dark rhodamine purple shading into deeper tones near the center. Excellent propagator. .10 each, \$1.00 doz.

J. A. CARBONE (Diener). Orange salmon, very iridescent, darker shading toward the outer edge of the petals. Yellow center. Fine, long, well built spikes. Each .25, doz. \$2.50.

JACK LONDON (Diener). Light salmon penciled vermilion. Canary yellow throat also penciled. Perfect bloom. .10 each, \$1.00 doz.



GORDON AINSLEY    ::    ::    CAMPBELL, CALIFORNIA



*Dahlia—Jersey's Beauty*

**KING TUT** (Davis). A splendid novelty in a gigantic flower of Venetian pink blended with peach red with fine throat markings. Flowers are wide open on a tall, straight spike. .25 each, \$2.50 doz.

**LA PALOMA** (Dusinberre). A clear orange grandiflora prim with many florets open at one time on tall spike. It does not burn. .50 each, \$5.00 doz.



Gold Eagle

**LAVENDER BRIDE** (Bride). Large open smoky lavender. Tall. .20 each, 3 for .50, 12 for \$1.50.

**LONDON SMOKE** (Diener). Corinthian red shading into bordeaux on the outer edges of the petals. Fine light stripe running through the center of each petal. Lip speckled ruby. .25 each, \$2.50 doz.

**LOS ANGELES** (Houdyshel). Called the "Cut and Come Again" glad, due to its wealth of bloom spikes. A graceful, clear bright pink with darker throat. Wonderful variety, featured in all catalogs. .50 doz.

*Page Six*

**MARMORA** (Errey). A magnificent flower of grayish lavender color, with an old rose blotch. Many flowers open at a time, and each is of great size. .25 each, \$2.50 doz.

**MING TOY** (Kunderd). One of the most popular glads in our Trial Grounds. An apricot yellow touched with bittersweet orange. A grand primulinus with excellent habits. .50 per doz.

**MINUET** (Coleman). A real aristocrat in clear lilac lavender on strong, sturdy spikes with many florets open at once, and exceptionally well placed. .15 each, \$1.50 doz.

**MISS DES MOINES** (Prestgard). Lovely clear pale lilac shading deeper at tips of petals. Medium .20 each, 3 for .50. Large .40 each, 3 for \$1.00.

**MME. SULLY** (De Groat). Ivory white with carmine blotches in throat. Very distinct and beautiful. .10 each, \$1.00 doz.

**MOTHER MACHREE** (Stevens). Rated as the best "Smoky" variety on the market. Tall, straight spikes carrying 6 to 8 wide open florets of a soft lavender and subdued orange with an overcast of gray. Edges of petals show a salmon pink. .60 each, \$6.00 doz.

**MRS. J. K. ARMSBY** (Diener). A great many large flowers opening at one time of a coral pink with a cream throat, speckled ruby. .15 each, \$1.50 doz.

**MRS. TRUXTON BEALE** (Diener). Ground color begonia rose striped with flame. .10 each, \$1.00 doz.

**MRS. H. E. BOTHIN** (Ruffled—Diener). Light geranium pink, heavily ruffled. Flame scarlet center. Strong, well-built spikes. .10 each, \$1.00 doz.

**MRS. LEON DOUGLAS** (Diener). This is rapidly becoming one of the leading florist varieties because of the exceptional perfection of the large blooms which are begonia rose striped with flame. Flowers of great size are gracefully carried on a long spike. .10 each, \$1.00 doz.

**MRS. FRANK PENDLETON** (Kunderd). Flushed salmon pink with rich maroon blotch on lower petals. A very popular variety. .10 each, .75 doz.

**MRS. F. C. PETERS** (Fischer). Fine rosy lilac blossoms with soft crimson blotch; slightly ruffled and many opened at one time. Tall, vigorous and fine. Large. .20 each, \$2.00 doz.

MR. W. H. PHIPPS (Diener). Beautiful La France pink, overlaid light salmon rose. Lower petals faintly streaked and dotted ruby. Flowers are enormous, ten or more being open at one time. The plant is tall and flower spike long. .15 each, \$1.50 doz.

MRS. NEWELL VANDERBILT (Ruffled—Diener). Light salmon pink, heavily ruffled. Throat sulphur yellow, mottled and striped with crimson. Large. .25 each, \$2.50 doz.

MRS. VAN KONYNENBURG (Pfitzer). Tall, clear light blue, and probably the best ever introduced. Wonderful propagator, and one of the best sellers. .15 each, \$1.50 doz.

MRS. JOHN R. WALSH (Ruffled—Diener). Heavily ruffled, flesh pink. Three lower petals flame shading into dark ruby at the throat. Very large flowers. .25 each, \$2.50 doz.

NIMROD (Errey Bros.). Very dark rich crimson. Its deep velvety coloring makes this flower an outstanding gladiolus. .15 each, 3 for .35, 12 for \$1.00, 25 for \$1.75. Bulblets, 100 for .50.

O. D. BALDWIN (Salbach 1929). Deep rich velvety red, dark cherry blotch. Wide open well placed blooms. A larger and improved Martha Washington. .25 each, 3 for .60, 12 for \$2.00, 25 for \$3.50.

ORCHID, THE (Sprague). A little gem, and a decided novelty. Lavender pink on pale flushed frosted surface. Edges ruffled. The name "Orchid" is most fitting. Large .10 each, \$1.00 doz.

PEARL OF CALIFORNIA (Kingsley). The size, color and form of this flower are all that could be desired. A tall, graceful spike bears from 26 to 32 buds with 8 to 12 open at one time. The color is clear, soft La France pink, blending to a rosy white throat. .15 each, \$1.50 doz.

PFITZER'S TRIUMPH (Pfitzer). This is unquestionably one of the largest and finest gladiolus ever introduced. The enormous Amaryllis-like flowers are bright flaming salmon with cherry blotch in the throat. .15 each, \$1.50 doz.

PICARDY (Palmer). A most sensational flower of delicate apricot pink. This fine new gladiolus has many large blooms open at the same time. The individual florets are all extremely large, slightly ruffled and of heavy wax-like substance. Large, \$10.00 each.

POLA NEGRI (Diener). Apricot with yellow lip, shading into old rose and salmon on the outer edges. Very lovely combination of colors. .10 each, \$1.00 doz.

PRIMROSE PRINCESS (Salbach). Tall growing spike of rich primrose yellow. Well placed, and many are open at one time. .10 each, \$1.00 doz.

PURPLE GLORY (Kunderd). A velvety purple with darker throat. .10 each, \$1.00 doz.

REAH (Salbach). Rich mallow purple shading to mallow pink in center. Deep velvety blotch, almost black, in throat. Large wide open blooms. .15 each, 3 for .35, 12 for \$1.25.

RICHARD DIENER (Diener). A gorgeous bloomer of geranium pink with a yellow throat. .10 each, \$1.00 doz.

ROSE ASH (Diener). Strong stemmed, popular variety with good blooms of a rose shade suffused with a curious combination of blue, yellow and gray. One of the best. .75 doz.

SALBACH'S PINK. A glowing geranium pink with lip and throat of soft carmine. Petals are slightly recurved. Good size and substance and a fine spike. .50 each, \$5.00 doz.

SARABAND (Salbach). A very unusual flower, rich as an oriental rug. Coloring a velvety oriental brownish red, shading to red-purple. Straw yellow blotch. .15 each, 3 for .25, 12 for \$1.25.

SCARLET BEDDER (Salbach). A glowing scarlet grandiflora Prim, that is not too red to cut well with other Primulirus. Very popular. .50 per doz.

SCARLET PRINCEPS (Kunderd). Also known as "Virginia." An extraordinarily distinct and massive spike, with blooms of a rich scarlet, shading deeper in the throat. Massive blooms closely set. Winner of many awards. .50 doz.

SCARLET WONDER (Cowee). Immense, brilliant red. .25 each, \$2.50 doz.

SIR THOMAS LIPTON (Salbach 1929). Large salmon rose, heavily flaked smoky steel. Growth vigorous. The tips of this gladiolus make a beautiful basket for a room with mahogany and old rose, old blue or taupe hangings. .15 each, 3 for .35, 12 for \$1.25.

SOUVENIR (Gravereau). An early, pure yellow prim of great merit. Probably the finest bright yellow of the type. .50 doz., \$3.50 per 100.

TENNYSON (Kingsley). A velvety brownish oxblood red with cream blotch in throat. Six to eight open. L. \$5.00, M. \$3.00, S. \$2.00.

VEILCHENBLAU (Pfizer). A large flowering violet blue, rather dark. .15 each, \$1.50 doz.

WHITE BUTTERFLY (Primulinus—Kunderd). Pure white. .10 each, \$1 doz.

YOSEMITE (Diener). Geranium red shading into rose. Light stripe runs through the center of each petal. Lip pale lemon yellow. Very large and open flowers. \$1.00 each, \$10.00 doz.

## GLADIOLUS COLLECTIONS

### "FRIENDSHIP COLLECTION"

This collection of Gladiolus has made more friends for my bulbs than almost any other collection in my catalog.

6 BETTY JOY, 6 GOLD EAGLE, 6 GIANT NYMPH, 6 HELEN WILLS, 6 MRS. F. C. PETERS, 6 THE ORCHID.

Blooming size bulbs, all properly labeled .....2.25  
Half-size collection, 3 each of above varieties 1.25

### "U. S. A. COLLECTION"

Twelve each blooming size Gladiolus in beautiful shades of red, white and blue .....3.25  
Half size collection, 6 each .....1.75

### "ECONOMY COLLECTION"

Six each of 12 named varieties, each properly labeled, 72 blooming size bulbs—a garden full of flowers .....4.25  
Half size collection, 3 each (36 bulbs) .....2.25

### "OUR DOLLAR MIXTURE"

We consider this the finest mixture put out by any dealer. All large bulbs, of excellent varieties. NO TWO ALIKE IN A DOZEN. Will give you a wealth of bloom to cut. This is our most popular seller in glads. 1.00 per dozen, 7.00 per 100.

### "OUR SIX BITS MIXTURE"

A mighty fine assorted run of large bulbs. Just the thing for that corner of your garden. Very satisfactory as cut flowers. .75 per dozen, 4.50 per 100, 35.00 per 1,000.

### "OUR FLORISTS' MIXTURE"

Designed for the florist trade, and guaranteed to furnish splendid crops of bloom. These are assorted so some will bloom early and some late, in same planting. 3.50 per 100, 25.00 per 1,000.

## NEW HYBRID GLADIOLUS SEED

*Saved from Flowers of Separate Colors*

I have had so many requests for Gladiolus seed saved from flowers of separate colors that a few of the most sought after shades are listed herewith for the first time. Every effort has been made to keep the colors pure, but do not expect to grow all one color of Gladiolus from seeds saved from one shade of flowers, for that would be impossible. However, there is a much better chance of growing a "Blue" Gladiolus from seed saved from blue flowers, than from "mixed seed."

### GROWING GLADIOLUS FROM SEED

Where there is no frost Gladiolus seed may be sown in the open. Plant in the early Spring in rows about one foot apart; cover with half an inch of sandy soil. Water and cultivate the same as for any other seed. Many will flower the first season. Lift the bulblets in the fall and handle the same as for other Gladiolus bulbs. In colder climates the seeds should be sown in shallow boxes in coldframes or greenhouses. A good sandy soil mixed with one-third leaf-mold should be used.

**BLUE SELECTED GLADIOLUS SEED MIXTURE.** Seed saved from the finest blue, lavender and violet varieties, including many of the newer introductions. Packet, about 200 seeds 1.00  
Half packet ..... .50

**ROSE SELECTED GLADIOLUS SEED MIXTURE.** Saved from the best rose-shaded Gladiolus. Packet, about 200 seeds ..... .50  
Half packet ..... .25

**RED SELECTED GLADIOLUS SEED MIXTURE.** None but the seed saved from the best red Glads goes into this mixture. Packet, about 200 seeds ..... .50  
Half packet ..... .25

**YELLOW SELECTED GLADIOLUS SEED MIXTURE.** Saved from such varieties as Gold Eagle, Golden Frills and other fine yellows. Packet, about 200 seeds ..... .50  
Half packet ..... .25

**"BABY" GLADIOLUS SEED (Fall Delivery)**  
This seed is saved from the miniature Spring type or "baby" Gladiolus. These early Glads should become very popular with the florists in the East, where they can be grown in greenhouses. Mixed seed, per packet of about 200 seeds .....1.00  
Half packet ..... .50

## GLADIOLUS SPECIES

The greater part of the improved garden forms of Gladiolus are derived indirectly from South African species, of which there are over a hundred now known, which are unique both in shape and color.

### FOR SPRING PLANTING

	Each	Doz.
<b>DRACOCEPHALUS</b> (The Dragon Head). Hooded green flowers, striped yellow .....	.25	2.50
<b>PRIMULINUS</b> (Maid-of-the-Mist). A little wild yellow "Glad" growing about the foot of Victoria Fall, in Africa .....	.15	1.50
<b>PSITTACINUS</b> (The Parrot Glad). Another hooded species with red, green and yellow flowers. Rare and seldom seen in this country. ....	2.50	
<b>QUARTINIANUS</b> . Tall species with large flowers of red and yellow that blooms late in summer .....	.25	2.50
<b>SAUNDERSI</b> . Large bright scarlet blossoms with white blotch in throat. Not easy to grow, but well worth the effort if successful .....	10.00	



Gladiolus Byzantinus

### WILD GLADIOLUS COLLECTION

#### FOR SPRING PLANTING

3 Dracocephalus .....	.75
3 Primulinus .....	.45
3 Quartinianus .....	.75
Total Value	1.95
Above collection for .....	1.65
One each of above three species for .....	.65



Gladiolus cardinalis elegans

### FOR FALL PLANTING

	Each	Doz.
<b>ANGUSTUS</b> . White marked purple; 2 to 3 feet 1.50		
<b>BYZANTINUS</b> (Turkish Corn Flag). Native of Asia Minor, about 2-3 feet high and is hardy except where winters are severe. Color is purple or wine color. Blooms in May. ....	.50	5.00
<b>CALLISTUS</b> . Pale pink with carmine markings. ....	2.50	
<b>CARDINALIS ELEGANS</b> . The "Superb Gladiolus." Long sprays of carmine red and salmon colored flowers with white throat. This is one of the most beautiful of all the wild Glads and is very rare in this country. Blooms from May to the end of June; 2 feet .....	.75	
<b>COMMUNIS</b> . This dainty little wild Glad comes from Central Europe and is hardy in most of the Eastern states. 1 1/2 to 2 feet tall, blossoms rich mauve or deep lavender. Blooms here in May. Supply limited. ....	1.00	
<b>CUSPIDATUS</b> . Creamy-pink with carmine throat. ....	1.50	
<b>LEICHTLINI</b> . Flowers orange and red. Very beautiful and graceful. ....	.50	
<b>TRISTIS CONCOLOR</b> (The Fragrant Glad). Height 3 to 4 feet. A most interesting species from the Cape. The flowers which are rather large considering the slender stems, are cream with brown spots. A sweet fragrance is noted after sunset. ....	.35	3.50



Gladiolus tristis concolor

### WILD GLADIOLUS COLLECTION

#### FOR FALL PLANTING

3 Byzantinus .....	1.50
3 Cardinalis elegans .....	2.25
3 Tristis concolor .....	1.05
Total Value	4.80
Above collection for .....	4.35
One each of above three species for .....	1.55

## SEEDS OF SOUTH AFRICAN GLADIOLUS SPECIES

Each Spring I receive seeds of a number of wild Gladiolus from a collector friend in South Africa. Some of these species are most interesting in their unusual form and coloring. A few of the commoner species are the parents of the large flowering forms of Gladiolus. Many of these wild types are very fragrant and, with their unique shapes and exotic color combinations, furnish endless possibilities for Gladiolus breeders.

Some species bloom quickly from seed as in the case of *G. Maculatus*, which bloomed last summer after being planted for only six months. Other species require one or two seasons to bloom. It takes a long time to order and receive seeds from South Africa. After my supply has been sold, it will be months before another lot is received; therefore, order early. No responsibility is assumed for this Gladiolus seed in regard to it being "true to name" or its "fertility," for I have no control over it. However, I will say that all seed from this source that I have sown during the past two seasons has germinated very satisfactorily. The descriptions of the following species have been supplied by the collector. If possible, kindly give second and third choice in case some species have been sold out.

**Alatus**—A peculiar type, should be useful in hybridizing. Large flowers, terra-cotta with green or yellow on lower segments. Sweet scented. 6 in. to 1 ft. high.

**Angustus**—Very branched, of the "Painted Lady" type with very long narrow perianth tube.

**Blandus**—Typical "Painted Lady" coloring. 1 1-2 ft.; up to 20 blooms on a stem, often branched.

**Brevifolius**—Blooms late autumn, small flowers, dainty pink and white, sometimes blue.

**Callistus**. 3 ft. high, flowers well spaced out on stem, pale pink or white with deeper throat markings. Manner of growth reminds one of *Primulinus* Hybrids.

**Cardinalis**—The "Superb Gladiolus." Long sprays of large carmine-red flowers with white throat markings outlined in dark red. Likes moist shady spots.

**Carmineus**—Flowers in autumn and the long leaves come later. Very intense red. Large flowers on short stem.

**Crassifolius**. Flowers late. Flowers smaller and deeper pink than *G. Stanfordiae*.

**Cuspidatus**—More delicate than *G. Blandus*, flowers yellow with carmine throat markings, 1 ft. upper segments narrow and very waved.

**Debilis**—A very pretty spring-flowering species, 1 1-2 to 2 ft. high on thin wiry stems, blossoms white, very prettily marked with deep carmine.

**Formosus**. Flowers cream, blotched with purple, height 1 to 1 1-2 ft.

**Gracilis**—The earliest to bloom, 1-2 ft. high, very graceful, flowers blue, marked with yellow on the lower lip.

**Hirsutus**—Large deep pink blossoms, striped white. Sweetly scented. Very robust and handsome.

**Leichtlini**—Spikes 4 ft.; flowers orange and red.

**Odoratus**—New species, winter blooming, large flowers marked brown or mauve. Sweetly scented by day.

**Orchidiflorus**—Very attractive, resembles *G. Alatus* in shape, having upper segments elongated and turned over, flowers soft bronze, sometimes marked with purple. Sweetly scented.

**Psittacinus**—Height 5 ft., large flowers on strong stems, red flecked with orange.

**Stanfordiae**—Flowers autumn, plants make nice clumps of foliage with many sprays of pink and white flowers.

**Tristis**—Height 4-6 ft., very thin stems, flowers 10-20 in a spray, pale yellow, mottled brown. Very sweet-scented after sunset. Flowers mid-summer.

**Villosus**—Flowers with *G. Gracilis*. Pink, somewhat smaller.

PACKET OF 25 SEEDS .....	1.00
Half packet, 12 seeds .....	.50



GLADIOLUS, by F. F. Rockwell. Recommended as "the best brief guide on gladiolus growing." It tells how to plant, fertilize, and cultivate; how to grow from seed or bulblets; how to harvest and cure; how to handle for cut flowers; and every other detail needed for success with this popular flower. 45 illustrations, 79 pages .....\$1.00

Sent FREE as a premium with an order for \$10.00 worth of bulbs from this catalog at single or dozen rates, if asked for at the same time.

# DAHLIAS

Dahlias grown in California are without doubt the best obtainable on account of the long growing season. Our gardens are in full bloom from early July until October, a wonderful blaze of color. Many are prize-winning introductions.

Dahlias are the most prolific of all summer flowers, producing as they do numerous blossoms which, if disbudded, will be gigantic in size. Owing to a recent acquisition, details of which are noted elsewhere in this catalog, and of which I am justly proud, more than ten acres of the finest introductions of Dahlias are now available for your selection. The mild California days are a great benefit to Dahlias, inducing the formation of strong tubers of perfect quality.

In planning the Dahlia garden, a pleasing effect may be obtained by grouping certain colors together, which may be followed out according to individual taste.

Our Dahlia tubers are priced to fit every purse. Some of the finest standard varieties will be found listed this season at very low prices. For some attractive Dahlia Collection bargains, turn to page 18 in this catalog.

FULL DIRECTIONS FOR PLANTING THE TUBERS AND CARING FOR THE PLANTS WILL ACCOMPANY EACH ORDER.

## TYPES OF DAHLIAS

Dahlias are divided into the following types as classified by the American Dahlia Society:

1. FORMAL DECORATIVE. Double flowers, full to the center; outer petals usually flat and inner ones rounded; regular in arrangement.
2. INFORMAL DECORATIVE. Fully double flowers, often irregular in arrangement and with long, twisted or pointed petals.
3. CACTUS. Fully double flowers with long narrow petals, which are rolled or curved more than half their length.
4. SEMI-CACTUS. Fully double flowers; half-way between the Cactus and the Informal Decorative.
5. PEONY. Semi-double flowers, with yellow center; the outer petals are unusually broad and flat, while the inner ones twist and curl around the center.
6. POMPON. These are fully double miniature Dahlias having a diameter of less than two inches.
7. SINGLE. This type has only one row of petals surrounding an open yellow center.

NOTE: Pompon and single Dahlias are not included with the other types but are listed separately.

## DAHLIA GREEN PLANTS

These are rooted cuttings, taken from tubers which have been started early in the greenhouse. They are ready for shipment after APRIL FIRST, and will bloom about the same time as tubers that have been planted three weeks earlier. They require the same care as any other plant and if this is given them, they will produce more and better flowers and just as good tubers as if grown from tuber stock. They are less liable to carry disease. The clumps of tubers are easier to divide the following spring and the cost of DAHLIA GREEN PLANTS is just half as much as for tubers of the same variety.

DAHLIA GREEN PLANTS are shipped to all parts of the United States. They are packed in ventilated packages and shipped EXPRESS PREPAID for orders of \$10 or over. (Orders for less than \$10 are shipped EXPRESS COLLECT). These green plants are not satisfactory to ship by parcel post.

DAHLIA GREEN PLANTS are supplied in varieties where the tubers sell for \$1 or over. The price is exactly one-half the price of the tubers. Send in your order for DAHLIA GREEN PLANTS as early as possible as only a limited quantity is available. A list of varieties of DAHLIA GREEN PLANTS of NEW INTRODUCTIONS, not included in our general list of Dahlias, will be mailed on request.

A. A. STYVERS (Boston). C. This is an immense flower with incurved petals. The color is amber, shaded salmon rose. Splendid cut flower. \$5.00.

AIMEE HODGENS (Boston) HC. Extra early bloomer. Golden bronze, under petals red. Strong, straight stems. \$7.50



Cactus Type

AL KORAN (Davies). D. Golden yellow. Big, bold flower with long, wavy petals, which stands very erect on long rigid stem. The plant is a tall, vigorous grower. .50

ALTAMONT (Kemp) D. Rose-pink deepening to American Beauty Rose toward center. Flower is larger than average, fully double, petals slightly curled. Keeps well when cut. \$1.00.

AMBASSADOR (Broomall). S. C.. One of the best. Color a soft amber pink and salmon with yellow center. .75.

AMUN RA (Seal). D. Golden copper deepening to a rich reddish bronze. A sensational dahlia of great size that is unsurpassed for exhibiting and very useful for cutting. .50

BALLET GIRL (Boston). Solid orange or orange edged white, sometimes on the same bush. .50.

BARBARA WEAR (Seal) D. A fine cut flower of blended pink and lavender on long, stiff stem. \$2.00.

BASHFUL GIANT (Marena) D. A rich apricot bloom with golden shadings, often winner as the "largest flower in the show." .75

BEAR CLAWS (Staats). An immense cactus of rich true carmine. The blooms are made up of many large long claw-shaped petals, well incurved. The plant is tall and the stems good. A very free bloomer. .50.

BIG BEN (Dothy). HS. Raspberry red of one shade and one of the largest of the show dahlias. Stems are fine and the blooms are always perfect. .50

BLACK JACK (Westilius). D. Deep maroon, almost black. One of the darkest of all dahlias and a robust grower. The flowers are large and stems good. Decidedly attractive. .75

CANARY (Boston). D. An extra early canary yellow. Free bloomer on long stems. Tall grower. \$1.50

CHAMPAGNE (Boston). Dull, golden champagne. An entrancing color and an irresistible dahlia in every way. Large flower, extra long stem, lasts a long time on the bush as well as when cut. .50

CIGARETTE (Boston). C. A bi-color flower in scarlet and white on cane stiff stems. .50

COLOR SERGEANT (Lyndora Garden). D. Color is a deep salmon bronze. A new eastern dahlia of great beauty. \$2

CONQUISTADOR (Ballay) Hyb. Cactus. Awarded gold medal for best dahlia at the San Leandro flower show. The flowers are a beautiful soft creamy yellow shading to a glowing pink at the base of the petals. \$2.50

CORAL (Cactus). Color as name suggests. .50.

COQUETTE (Fisher & Masson). D. Giant flower, red and gold, the face of the petals being velvety red at the base blending and shading to golden sunset color at points. Reverse of petals gold. \$2.00

DADDY BUTLER (Boston). H. C. Rosy carmine with reverse of petals lighter. Large free blooming and an excellent keeper. .50

DAHLIAMUM (Ballay). Hyb. Cactus. Clear bright yellow. This dahlia much resembles a chrysanthemum, hence its name. Excellent cut flower. \$2.00

DOROTHY STONE (Fisher & Masson). D. Huge exhibition rose pink. \$3.00.

EAGLE ROCK JEWEL (Broomall-Success). D. Cream overlaid shell-pink. Good stems. \$2.00



EDNA FERBER (Fisher & Masson). H. C. Color coral, shading to old gold at base of petals, which are long and wavy. One of the best sellers. \$1.50

EL GRANADA (Boston). True bright orange with a yellow reverse. Hybrid cactus with all good qualities, most lovely color, largest size, stands the warmest sunshine unusually well. .75

ELLINOR VANDEVEER (Seal). Glowing rose pink. An exceptionally beautiful dahlia of good size and with all the other qualities necessary to place it in the highest class. .75

EL REY (O & C). D. Rich golden and salmon shade which blends well with other flowers. \$2.50

EMMA MARIE (Dahliadel). H. C. Color, clear pink with a creamy white center. Large. Splendid keeper. .50

FAITH GARIBALDI (Boston). D. Clear rose pink. A gold medal dahlia that has won many prizes. In our garden it has been a model of perfection. Flowers are large and well formed, the stems long and stout, the bushes loaded with bloom. .75

FLAMING METEOR (Barker). I. D. The color is a flaming orange-scarlet deepening to burnt orange at center. The flower is large, of good depth, splendid form and unexcelled keeping qualities. Stems long, tough and cane-like. .75

FORT MONMOUTH (Kemp). H. C. Rich claret color, with brightness unusual in the darker tones. Flowers frequently 13 inches in diameter. \$3.50

FORT WASHINGTON (Rindfleisch-Jost). D. A splendid mahogany-red which does not fade, borne on extra long stems of great strength. \$1.50

FRANCESCA (Davis) D. A huge flower, tanned rose with distinct violet suffusion, touched with gold. Petals long narrow and artistically twisted. Stems are long and rigid. \$1.50

F. W. BUTLER (Boston). D. This dahlia has frequently won prizes of various flower shows for largest and best blooms. Color is golden orange, flaked bronze. Excellent for cutting and exhibition. \$15.00

GLADYS SHERWOOD (Broomall). H. C. Clear white. One of the favorites. .50

GORGEIOUS ELIZABETH (Boston) P. Brilliant red, tipped gold. One of the finest Peony dahlias. .75

HALVELLA (McWhirter) D. Beautiful shade of rose pink, flowers of large size on stiff stems. A late bloomer, but prolific at the time when you want flowers. .35.

HARRY MAYER (Europe). D. A splendid pale rosy purple which is held well above the foliage on long, stiff stems. Fine form and good grower. 1.00

HATHOR (Seal). D. A distinctive dahlia of a vivid flame color with tones of orange and crimson showing. Large bloom on perfect stems. The richness of the color and free growing habit makes it one of the best of the newer varieties. \$1.50

IVORY (Boston). D. A large exquisitely beautiful broad-petaled ivory white. The flower is full and deep, does not burn and keeps indefinitely. Fine stem. \$3.50.

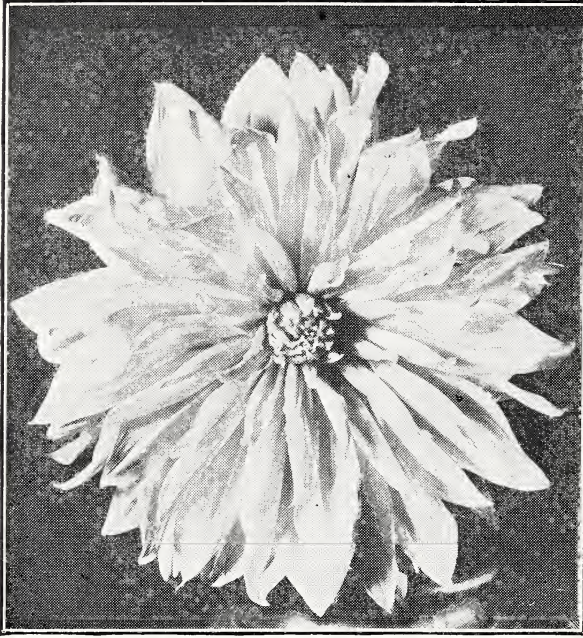
JACK O'LANTERN (Reed). D. A good decorative with wide twisted petals of brilliant orange-red shading darker near the center. Center petals are tipped gold. \$1.00



Semi-Cactus Type

JANE COWL (Downs). I. D. One of the few graceful giants. It is an immense glistening, bronzy buff and old gold, with just enough twist to the broad petals to make it beautiful. Free blooming and fine for cutting and show purposes. .50.

JEAN HARE (Fisher & Masson). H. C. Beautiful golden yellow, which changes to an apricot buff late in the season. \$1.50



Peony Type

**JERSEY'S BEACON.** D. Chinese scarlet with a much paler reverse. Very large. .50

**JERSEY'S BEAUTY** (Waite). D. This salmon rose pink dahlia is one of the best cut flowers in the garden. The blooms are of good size and fine substance and the stems are long and tough. .50

**JERSEY'S CAPRICE.** D. An autumn shade, best described as apricot buff. Flowers large on strong stems. .75.

**JERSEY'S IDEAL.** D. Dark lavender-pink and one of the best in its color. Free bloomer. \$1.00.

**JERSEY'S KING.** D. Begonia-rose with a distinct form, the petals being broad, and rounded at the tips. .50.

**JERSEY'S MASTERPIECE** (Waite). An immense strawberry bloom suffused gold at the base of the petals. Excellently formed and on stems of great strength. Thick, leathery foliage which is very attractive. \$1.50.

**JIM MOORE.** (Loller). D. A golden yellow bloom suffused salmon with good size and form. \$3.00.

**JOVE** (Ballay). D. A giant dahlia. Bronze with old rose and gold. Has been a winner in many flower shows. \$1.50.

**JOY** (Boston). F. D. A beautiful clear silvery lavender without a trace of white. An immense flower. \$3.00.

**KATHLEEN NORRIS.** (Fisher & Masson). D. True rose pink, later deepening to mellow pink and paler in the young central petals. Petals are broad and overlapping, with twisted ends, filled to the center. \$4.00.

**KEMP'S VIOLET WONDER** (Kemp). D. A rich Naphthaline violet, lightening to a bluish violet and paler at the tips of petals. Lavender reverse. A fine, deep flower of great size and perfect form. \$2.50.

**KING TUT** (Seal). D. Rich, dark velvety crimson burgundy. Extra large. \$1.00.

**KITTY DUNLAP** (Boston). D. A very free blooming dahlia of American Beauty rose. The stems are long and stiff. .75.

**LADY LYNDORA** (Lyndora Gardens). D. Color, pink and white. \$1.50

**MAE SADLER REID** (Pelicano). D. An exceptionally large blossom of mahogany red, deepening to a dull maroon. The petals are broad and flat and the flowers have great depth. Blooms till late fall and flowers never show center. \$1.50.

**MARGARET MASSON** (Fisher & Masson). D. A beautiful eastern dahlia that does well in California. Silvery pink. .75.

**MARGARET WOODROW WILSON** (Fisher & Masson). D. Creamy white with a slight lavender suffusion. Large flower with broad petals slightly rolled. The plant is low growing and branching. .75

**MARIPOSA** (Boston). H. C.. One of the favorites. Pure light pink with a touch of mauve. Good center. .75

MARMION (Mastick). I.D. An immense pure golden yellow with bronze suffusion on reverse of petals. Form perfect, prolific bloomer. Long canelike stems holding blossoms well above foliage. .75

MEADOW LARK (Burns) D. A fine large flower with shading of buff and straw, reverse darker. .75

MINNIE EASTMAN (Eastman) H.C. Splendid hybrid cactus. A brilliant flame color bloom with undershavings of deep yellow. Stems are long and firm and a sturdy grower with glossy foliage. \$2.00

MRS. ALFRED B. SEAL (Seal). I.D. A beautiful old rose decorative. The flowers are huge, of great depth and substance. Strong tall bushes with excellent stems. \$4.00

MRS. CROWLEY (Broomall). D. Brightest salmon pink shading to yellow at the base of the petals. Good sized flower on strong stems. Attractive in the outside row of the garden. .50

MRS. CARL SALBACH (Salbach). D. Large flower of lavender tints on pink, sometimes with a touch of white at the center. One of the best for cutting. .50

MRS. ELEANOR MARTIN (Pelicano). D. Mulberry or violet rose. Something new in color. In a sunny climate the violet tone will be more pronounced. It is a very handsome dahlia with perfect stem and habit of growth. \$1.00

MRS. I. DE VER WARNER (Maraen). D. Considered the best of the standard orchid pinks. .50

MRS. JOHN T. SCHEEPERS (Maraen). D. Lovely canary yellow, changing to old rose and pink on outer petals, and as season advances it takes on deeper tones. .50

MY MARYLAND (Downs). H. C. A delicate pink suffused lavender, each petal tipped ivory. Splendid stem and foliage. \$1.50

NANAQUAQUET (Richards). D. Orchid pink. Good for cutting. \$2.00

NICHU (Boston). D. Pale yellow. An improved Yellow King which is vigorous in growth and free in blooming. Resembles in appearance the Yellow Turner chrysanthemum. .75

NOBILIS (Doolittle). D. Combination of white and red. .75

OLD HICKORY (Dahliadel). D. Madder red with apricot suffusion and the blooms are held well on cane stems. \$2.00

PAUL MICHAEL D. One of the largest of the California decoratives and best described as "California Gold." It has a faint tint of old rose, with a perfect center and wire stems. .50

PEPPER'S DELIGHT (Decorative). A true pink for cutting. \$1.50

PIERROT (Stredwick). C. An attractive deep amber, distinctly tipped white. .50

POP STEWART (Fisher & Masson). D. Lilac pink. Large size on good stems. \$1

PRIDE OF CALIFORNIA (Lohrmann) D. Called the "American Beauty Dahlia." Grown very largely for cut flowers. Crimson red, with a dark, full center. .35.

QUEEN OF THE GARDEN BEAUTIFUL (Decorative). Clear yellow with good stems. One of the best sellers. .75

REGAL (Boston). D. Bronze heavily suffused with dull old rose. This is doubtless one of the largest dahlias grown. The flowers retain their large size even in the late fall. The stems also remain strong and straight through the whole season and the plant is a free bloomer. \$2.50.



Informal Decorative Type

REGENT (Boston). D. Lavender pink. large flower with numerous long incurved petals completely covering the center. .50

ROBERT TREAT (Mueller). D. Deep bright rose. A beautiful eastern prize winner. Flower is large and it blooms most freely on good stems. .75

ROMAN EAGLE (Fisher & Masson). D. A typical autumn shade of flaming brilliant burnished copper. .75

ROOKWOOD (Boston). D. A deep cerise rose, with petals that curl and crinkle. \$1.00

ROSE FALLON (Harding). D. Deep old rose bloom. Perfect form and straight stem. .75

SAGAMORE (Badette). Golden amber shading deeper at the center. Another popular eastern variety that has won many prizes. The color is very good and the bloom is very beautiful. .50

SALBACH'S WHITE (Salbach). Large ivory white decorative dahlia. Keeps well and does not burn. Awarded gold medal by the Dahlia Society of California. \$1

SANHICAN'S BLUEBIRD (Fisher & Masson). D. One of the nearest things to a blue Dahlia we have seen. Violet blue. Splendid for cutting. \$1.00

SANHICAN'S GEM (Fisher & Masson) D. Old rose shade thickly suffused with amber. Petals are staghorn type. \$1.00

SEAL'S CALIFORNIAN (Seal). D. Bright golden yellow at center, shading lighter toward outer petals and tips tinted bronze pink. \$2.50

SUSAN G. TEVIS (Boston). F. D. The color of this stately flower is a deep shade of lilac with a silvery sheen. The plant is unusually vigorous and the foliage dark and rich. The large blooms are supported on exceptionally long and strong stems. .75

TOMMY ATKINS (Boston). D. Bright scarlet. A new and very brilliant shade. The refined but irregular formation of the large flower is very striking. Stem is the best possible and the blooms are freely produced. .50

TRENTONIAN (Fisher & Masson). D. Reddish copper and gold, described by the originator as "Indian skin." Flower has a velvety appearance unusual in this color blending. This variety is a strong grower and produces immense blooms on very strong stems that are good for all purposes. .50

TRYPHINNIE (Seal). D. Shell pink with darker reverse. Large flower on strong stem. Good keeper. .50

## SINGLE DAHLIAS



Single Dahlia

Single Dahlias are prolific bloomers. For mass planting in beds or borders they are very satisfactory. Excellent for cut flowers.

SEPARATE COLORS: Pale Pink, Golden Brown, Rich Purple, Buff, Bright Orange, Yellow or Lavender. Each .50, doz. \$5.00

UNION JACK. Red, with white stripes. Each .50

### ENGLISH BEDDING SINGLE DAHLIAS

The plants bloom in 12 weeks from planting and are literally covered with bloom until frost. The bush is dwarf, not exceeding two feet in height and requires little care. They can be planted in beds 12 inches apart or in attractive hedges along a drive. The flowers are similar to the single Dahlia except the bloom is smaller and is carried on long rigid stems which make an excellent cut flower with a wide range of color from white to darkest maroon.

MIXED COLORS: Dozen \$2.25; 25 for \$4.25; 100 for \$12.75.

PLEASE NOTE: Pompons, Singles and English Bedding Dahlias should be planted as soon as received. The tubers are small and may dry out if exposed to the air.

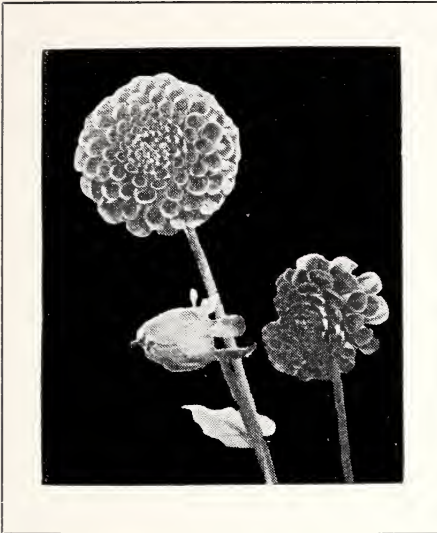
## POMPON DAHLIAS

You can plant nothing better in your garden to produce a wealth of cut flowers for the home, over a long period, than Pompon Dahlias.

They are very easy to grow, can be planted quite closely together, and may be used with annuals and with shrubbery in the border or the foundation planting.

One of the most popular uses of Pompon Dahlias is in a hedge, which quickly makes a growth of foliage and for several months is covered with a mass of bloom, furnishing outside beauty and material for cutting. Plant one foot apart for a hedge, staggering the plants in a double row.

*IMPORTANT: Tubers of Pompon Dahlias should be planted as soon as received.*



	Each		Each
AIMEE. A wee bronze .....	.50	JOHNNY PEPPIN. Small crimson ..	1.00
AMBER QUEEN. Golden bronze ....	.35	KLEIN DOMITEA. Orange, buff ....	.35
ATOM. Tiny orange .....	.35	LILIAS. Cream, suffused mauve .....	.50
BACCHUS. Bright scarlet .....	.35	LITTLE BEESWING. Gold and red ..	.35
BOBBY. Plum color .....	.35	LITTLE DAVID. Deep orange .....	.35
CHEERFULNESS. Orange, red tint ..	.35	LLOYD HICKMAN. Rose pink .....	.50
CORA MAY. Salmon, rose eye .....	1.00	LOLITA. Yellow, brown eye .....	.50
DANDY. Small, perfect orange .....	.35	MARS. The best brilliant red .....	.35
DARK EYE. White, tipped lav. ....	.35	NELLIE FRASER. Pink and lav. ...	.35
DARKEST OF ALL. Maroon .....	.50	ORANGE. As named .....	.50
ELIZABETH. Gold, edged brown ....	.35	PEGGY ANN. Yellow, edged red .....	1.00
EVA SALBACH. Brilliant red .....	.35	PHYLLIS. Yellow, tipped red .....	.50
GANYMEDE. Amber tinted lav. ....	.35	ROSEBUD. White, edged pink .....	.35
GENE. Light gold, brown cent. ....	.50	SAN TOY. White, edged carmine ....	.35
GEORGE IRELAND. Tiny mauve ..	.50	SNOWCLAD. Good white .....	.35
GIRLIE. Rosy lilac .....	.50	SUNNY DAYBREAK. Apricot to	
GLOW. Flaming old rose .....	.35	red .....	.50
GRUSS AUS WIEN. Amber .....	.35	SUNSET. Bright orange .....	.35
HAZEL. Buff tinted brown .....	.50	SUZANNE. Lavender, new .....	1.00
HELEN ANITA. Lav. white eye .....	.30	TAKA'S PURPLE. Carmine sheen ..	.35
IDEAL. Clear yellow .....	.50	TOMMY KEITH. Red, tipped white ..	.35
JOE FETTE. The standard white ....	.35	TOM THUMB. Smallest garnet red ..	.35
JOHNNIE. Dark red .....	.50	YELLOW GEM. Best clear yellow ..	.35

COLLECTION D-33: One dozen Pompon Dahlia Tubers, each different, each with name attached and of our selection—\$2.25. (50 tubers for \$8.75; 100 for \$15.75).



DAHLIAS, by F. F. Rockwell. Learn to know the different types of Dahlias and their uses in your garden, how to plant and grow them, what fertilizers to use, how to control pests, how to harvest and store the tubers, grow for exhibition, and how to propagate and hybridize. Brief and practical. 65 illustrations, 80 pages .....\$1.00

*Sent FREE as a premium with an order for \$10.00 worth of bulbs from this catalog at single or dozen rates, if asked for at the same time.*

## DAHLIA COLLECTIONS

We grow most varieties of the newer Dahlias and are always anxious to have our friends improve the strains they are growing. To this end we are making up six assortments of Dahlia Tubers and Dahlia Plants of the very best varieties, to fit any sized pocketbook. They are wonderful values—not discarded stock—but the best we grow.

- COLLECTION D-32: One tuber each of six fine Exhibition Dahlias of giant size, each labeled with name and with a regular catalog value of \$3.75 or more, if bought separately—Prepaid .....\$1.75
- COLLECTION D-36: One tuber each of six new giant Exhibition Dahlias each with name and each having a value of from \$1.00 to \$2.50 per tuber in our catalog—Prepaid .....\$4.25
- COLLECTION D-37: One tuber each of ten of the newest introductions, each labeled with name, and the ten with a total catalog value of \$18 or more. A splendid assortment—Prepaid .....\$8.50
- COLLECTION D-39: One Green Plant each of 10 new varieties of Exhibition Dahlias, each with name and a saving of half. Sent express collect. \$4.25
- COLLECTION D-40: One Green Plant each of 15 of the latest introductions of Giant Exhibition Dahlias, including one plant of Kathleen Norris, one of Francesca, one of Jane Cowl, and one of Mrs. A. B. Seal. Sent express prepaid .....\$12.75

### Special Dahlia Collection D-38

Choose one of each of any 12 of the following varieties and we will let you make up your own collection. It is possible to order 12 tubers from this list with a regular price of \$9.50—all for \$4.25. We want to encourage the growing of better dahlias, hence we make this liberal offer to you.

ORDER COLLECTION D-38 choosing 12 tubers of the following varieties for \$4.25, sent prepaid:

- AL KORAN
- CHAMPAGNE
- EMMA MARIE
- ELLINOR VANDERVEER
- FRANCESCA
- HALVELLA
- JANE COWL
- JERSEY'S BEAUTY
- KITTY DUNLAP
- MARMION
- MEADOW LARK
- MRS. CARL SALBACH
- MRS. I. DE VER WARNER
- NOBILIS
- QUEEN OF THE GARDEN
- BEAUTIFUL
- ROBERT TREAT
- ROMAN EAGLE
- ROOKWOOD
- SAGAMORE
- TOMMY ATKINS



Formal Decorative Type

1932

# Ainsley's Superior Flower Seeds

## DAHLIA SEEDS

Many growers of cut flowers are today growing their Dahlias from seed instead of bulbs, and find the percentage of doubles very high and colors good.

This is a great saving of both investment and labor, and since all new varieties are produced from seed, many new and improved varieties are found in a seedling bed.

Dahlias will usually bloom from seed about two or three weeks later than tubers planted at the same time. Usually they make large clumps of tubers in the Fall.

### CULTURAL INSTRUCTIONS

Obtain some good garden soil and pulverize it quite fine. If too heavy add sand. Fill a box with about 3 inches of soil and press down level. With the edge of a board press rows about 1-2 inch deep. Sow the seeds in these rows. Sift sand over the seed until the surface is level and press down firmly. Water carefully and keep box in warm moist place.

Dahlia seed will show the first plants in about 4 or 5 days, and while growing require no more care than other tubers or plants.

As soon as the plants have the first pair of rough leaves, prick them out with the point of a penknife, and transplant into 3-inch pots, or into another box, if you have no pots. Grow them thus until it is warm enough to put into the ground. Never put Dahlias into the ground until the soil is warm.

#### XXX GRADE

##### DAHLIA SEED MIXTURE

Our XXX (three X) grade of seed is, in our opinion, the best value you can obtain for your money, either from us or other growers. It is a formula mixture, each packet containing seeds from 15 parents which we have tested for years and are known to throw a large percentage of double flowers. The seed parents used are strong growing plants with insect resisting foliage, of the newer type. The pollen parents used this year were varieties of special merit such as Jane Cowl, Kemp's Violet Wonder, Kathleen Norris, Marmion, Francesca, etc. Packet of 100 seeds, \$5.00; half packet (50 seeds), \$3.00

**SPECIAL TRIAL PACKET of 35 Seeds of XXX MIXTURE for \$2.00.**

#### XX GRADE

##### DAHLIA SEED MIXTURE

Made up of the best of the standard varieties, such as Jersey's Beauty, Mariposa, Amun Ra, Mrs. I. de Ver Warner, etc. The proportion we use is about 70 per cent decorative and 30 per cent hybrid cactus. Will give plenty of splendid flowers of a wide range of colors. Packet of 100 seeds, \$2.00

#### X GRADE

##### DAHLIA SEED MIXTURE

Our one X grade is saved from named varieties only, and gives good results. It is intended for use where the gardener wants to plant in quantity for flowers only, and for this reason we call it our "Florists' Mixture." The repeat orders we receive on it convince us that it gives satis-

faction where cut flowers are wanted. Packet of 100 seeds, \$1.00; packet of 1000 seeds, \$9.00

#### HYBRID SHOW

##### DAHLIA SEED MIXTURE

The increasing popularity of this type of Dahlia has caused us to grow it separately, although it often reverts to the old ball type, and many come as decorative. It furnishes an interesting experiment. Packet of 50 seeds, \$1.00

#### ENGLISH BEDDING

##### SINGLE DAHLIA SEED MIXTURE

Plants bloom in 12 weeks from planting and are literally covered with single blooms until frost. The bush is dwarf, not exceeding two feet in height and requires little care in growing. They can be planted in beds or as a hedge 18 inches apart, and the fact they do not need disbudding or staking increases their popularity. The flowers are similar to the single Dahlia except they are smaller. Stems are long and strong, making them a splendid cut flower. Range of colors is from white to darkest maroon, with many shades in the same flower in some of them. Per packet, .50

#### POMPON

##### DAHLIA SEED MIXTURE

Seed harvested from the smaller and most popular new varieties. We grow nearly all the best ones, featuring many of the new varieties in our gardens. A packet of this seed will give you a splendid bed of pompoms. We grow them entirely separate from the larger Dahlias, and use every possible means to induce cross pollenization between the smaller types. Packet of 50 seeds, \$1.00; 500 seeds for \$5.00.

SEE NEXT PAGE FOR CASH PRIZE OFFERS

---

# Gordon Ainsley

CAMPBELL, CALIFORNIA

## CASH PRIZES

FOR THE BEST DAHLIAS GROWN FROM "AINSLEY DAHLIA SEED"

\$25.00 in Cash to the winner of FIRST PRIZE in the 1932 AMERICAN DAHLIA SOCIETY SHOW, for the best ONE-YEAR-OLD SEEDLING, with the understanding that the exhibitor purchases the Dahlia seed from us.

\$25.00 in Cash to the exhibitor who is awarded FIRST PRIZE for the best ONE-YEAR-OLD SEEDLING in the 1932 show, held by THE DAHLIA SOCIETY OF SAN FRANCISCO, with the same provision that the winning Dahlia is grown from seed purchased from us.

### IN ADDITION TO THESE CASH PRIZES

\$10.00 orders for bulbs or seeds will be presented to the winners of FIRST PRIZE FOR THE BEST ONE-YEAR-OLD SEEDLING, offered by any other OFFICIAL DAHLIA SHOW held in 1932, providing the prize-winning Dahlia was grown from "Ainsley Dahlia Seed" purchased this year. Winners of these \$10.00 PRIZE ORDERS will be allowed to select any BULBS, PLANTS or SEEDS listed in this catalog to the value of \$10.00. PRIZE CERTIFICATES, signed by an official of the show should be forwarded to us as soon as possible after the award has been made, so that prizes may be selected in time for shipment at the proper season.

Only one \$10.00 order will be awarded to the same person. When competing for any of these prizes, we must be notified at least ten days prior to the exhibit, stating name of show and where it will be held.

## DAHLIA SEED OF KNOWN PARENTAGE

All our seed is saved under the name of the variety, whether we sell it in mixture or not. For those specialists who want to plant seeds and keep the record of parentage we offer the following varieties of seed bearing parents. Pollen parents of these have been Jane Cowl, Elite Glory, Marmion, Jersey's Beauty, Francesca, Color Sergeant and others of a newer type, which usually transmit a heritage of strength, form and color.

PRICE ON SEED OF FOLLOWING VARIETIES: 15 SEEDS, ONE VARIETY, 50c

Albert Ward	George Walters	Mariposa	Robert Treat
Al Koran	Gorgeous	Marmion	Roman Eagle
Ambassador	Grizzly, The	Meadow Lark	Rosa Nell
Amun Ra	Halvella	Myrbeerb	Sagamore
Bear Claws	Harry Mayer	Mr. Crowley	Screamer
Big Ben	Jean Chazot	Mrs. Carl Salbach	Seal of Connecticut
Black Diamond	Jean Kerr	Mrs. Edna Spencer	Sierra
Black Jack	Jersey's Beacon	Mrs. I. De Ver Warner	Silverhill Park
Black Pearl	Jersey's Beauty	Mrs. John T. Scheepers	Sole Mio
Caroline Wintjen	Jersey's Caprice	Mrs. Langtry	Sunmaid
Champagne	Jersey's Ideal	Norman Lewis	The Bluebird
Dr. Tennis	Jersey's King	Oberon	Tom Lundy
El Granada	Jessie K. Prescott	Pride of California	Tommy Atkins
Ellinor Vandervee	Les Amours Des Madame	Queen of the Garden	Tryphinnie
Elsie Oliver	Margaret Woodrow	Beautiful	Wizard of Oz
F. T. D.	Wilson	Regent	Yuban

SPECIAL OFFER—One packet (15 seeds) each of 10 named parents, our selection, for \$3.00

PRICE ON SEED OF FOLLOWING VARIETIES: 15 SEEDS, ONE VARIETY, \$1.00

Alice Whittier	Edna Ferber	Jersey's Ideal	Pansy G. White
Altamont	Elite Glory	Jersey's Masterpiece	Pimlico
Andrea Erickson	El Rey	Jim Moore	Pepper's Delight
Angela Mia	Flaming Meteor	Jove	Pop Stewart
Barbara Redfern	Fort Washington	Kemp's Violet Wonder	Regal
Barbara Wear	Francesca	King Midas	Salbach's White
Bueno	Frank Miller	King Tut	Sanhican's Bluebird
Charles G. Reed	Gorgeous Elizabeth	Lady Lyndora	Siskiyou
Charlotte Lafrenz	Grace Ricords	Laura Weber	Sunny Jim Rolph
Chemar's Eureka	Harry Mayer	Mae Sadler Reid	Susan G. Tevis
Color Sergeant	Hathor	Marian Broomall	Tommy Atkins Sport
Conquistador	Ishbell	Minnie Eastman	Treasure Island
Coquette	Ivory	Miss New York	Valeska
Dorothy Stone	Jack O' Lantern	Mrs. Alfred B. Seal	Vivandery
Dr. John H. Carman	Jean Hare	Mrs. Eleanor Martin	Watching Prince
Eagle Rock Beauty	Jersey Beacon	Nanaquaque	Yellow Beauty

SPECIAL OFFER—One packet (15 seeds) each of 10 named parents, our selection, for \$5.00



## SEED OF NAMED VARIETIES OF POMPONS

Packet of 50 seeds \$1.00; 500 seeds for \$5.00

Aimee	Darkest of All	Grass Aus Wein	Orange
Amber Queen	Dawning	Ideal	Peggy Ann
Annie Doncastor	Dewdrop	Joan	Phyllis
Atom	Dr. Jim	Joe Fette	San Toy
Baccus	Elizabeth	Johnnie Peppin	Snow Clad
Bobby	Eva Salbach	Klein Domitae	Sunny Daybreak
Charming	Gene	Lilias	Sunset
Cheerfulness	George Ireland	Little David	Suzanne
Cora May	Girlie	Lolita	Taka's Purple
Dandy	Glow	Nellie Fraser	Topsy
Dark Eye	Goldie	Mars	Yellow Gem

SPECIAL OFFER—One packet (25 seeds) each of 10 named parents, our selection, for \$3.00

BE SURE TO ORDER A SECOND AND THIRD CHOICE if your order is placed after harvest, as many of our customers order a year in advance of the crop to insure a supply, and some varieties produce few seeds even when hand fertilized. Expect NOTHING from Dahlia Seed and be surprised with results, rather than plant with the idea that each plant will be a winner. We again urge the amateur to consider planting our XXX Grade Mixture, which gives by far the best chance, as we select the varieties from ten years of experience.

## IRIS FROM SEED

Those who find it difficult to establish some of the rarer Iris species will be interested in the following list of seeds. Iris seeds may be sown in the Spring, in flower pots or in shallow wooden boxes or "flats." Any good garden soil will serve. Some will not germinate until the following Spring; therefore, be patient, and do not discard the plantings prematurely.

	Per Pkt.		Per Pkt.		Per Pkt.
Aurea (Spuria)	.25	Intermedia—Mixed	.25	Pseudacorus gigantea	.25
Bracteata	.15	Kaempferi—Mixed	.25	Sambucina	.35
Bulleyana	.15	Lacustris	.50	Siberica—Varied	.25
Bucharica	.35	Longipetala	.35	Setosa	.35
Chrysofor	.35	Macrosiphon	.35	Spuria (Branin Hybrids)	.50
Chrysographes	.35	Milesi	.50	Alice Eastwood	.50
Chrysophylla	.25	Missouriensis	.25	Hattie Branin	.50
Dichotoma	.50	Monnieri	.15	Golden State	.50
Douglasi	.25	Monspur	.25	Mary Nulty	.50
Ensata	.35	Nepalensis	.35	Susiana	.50
Foetidissima	.15	Ochroleuca	.15	Tectorum	.35
Forresti	.50	Orientalis	.25	Tenax	.25
Germanica—Mixed	.15	Purdyi	.25	Unguicularis (Stylosa)	.35
Gracilipes	.35	Pumila	.15	Versicolor	.15
Hartwegi australis	.15	Pseudacorus	.15	Warei	.25
				Wilsoni	.50

## LILIES FROM SEED

Growing Lilies from seed is very interesting, and in some instances, it is more satisfactory than planting the bulbs. It requires from two to three years to obtain a flowering size bulb from seed. Some varieties of Lily seed germinate very quickly, while others remain in the ground one year before making any sign of growth. Therefore, care should be taken in not destroying the boxes or beds containing Lily seeds. The seeds may be grown either in the spring or the fall, in same manner as suggested for growing Gladiolus seed. When the seedlings are large enough to handle, they may be transplanted to a permanent location.

	Per Pkt.		Per Pkt.		Per Pkt.
Amabile	.15	Humboldtii magnificum	.35	Pomponicum	.50
Auratum	.15	Japonicum	.15	Regale	.15
Auratum platyphyllum	.15	Kelloggi	.35	Roezli—Yellow	.35
Bolanderi	.25	Martagon	.15	Roezli—Red	.35
Callosum	.15	Martagon album	.35	Rubellum	.15
Cernuum	.35	Maximowiczii (Leichtlini)	.25	Rubescens	.35
Columbianum	.35	Medeoloides	.35	Sargentiae	.35
Cordifolium	.35	Monadelphum (Colchicum)	.50	Speciosum magnificum	.50
Concolor	.35	Pardalium	.15	Speciosum melpomene	.50
Croceum	.35	Parviflorum	.35	Superbum	.50
Davuricum	.15	Farryi	.50	Princeps	.25
Elegans—Orange	.35	Philadelphicum	.50	Tenuifolium	.15
Giganteum himalaicum	.50	Philippinense formosanum	.35	Washingtonianum	.15
Henryi	.35	Pyrenaicum aureum	.35	Willmottiae	.50
Humboldtii	.25				

**SEEDS OF BULBOUS AND TUBEROUS ROOTED PLANTS**

Growing bulbous plants from seed is a most fascinating pursuit, if one has the patience to wait one to three years for flowers. There is no particular difficulty attached to this work. It is only essential to bear in mind that the seeds of most bulbs are slower to germinate than those of annuals, often taking from six weeks to a year to break ground. A good method for growing these seeds in small lots is to prepare some good potting soil, and sow them in pots. These should not be subjected to severe cold, or allowed to dry out at any time. Seeds should be covered twice their own depth, preferably sifting the soil over them, and pressing down with a smooth block of wood. A mulch of peat will help to conserve moisture at the surface.

Many of the seeds in the following list are grown in our trial garden. Others are obtained from collectors and botanical gardens in foreign countries. Many bulbs can be obtained only by growing from seed on account of importation restrictions. The greatest care is taken to supply the very best seed, true to name. However, no responsibility is assumed for the results obtained. Orders will be filled when the seed is ready, or when received from foreign sources, usually in March or April. If possible, kindly give second and third choice in case some items have been sold out. Packets usually contain from 25 to 100 seeds each, according to the value. Very rare varieties have from 6 to 12 seeds per packet.

	Per Pkt.		Per Pkt.
ACHIMENES—Mixed .....	.25	Friiled—Mixed .....	.30
AGAPANTHUS umbellatus—Blue .....	.20	Evansiana—Light pink .....	.35
Umbellatus albus—White .....	.25	Frau Helene Harms—Yellow, double .....	.35
ALBUCA major—White and green .....	.25	Lloydii—For hanging baskets. Mixed .....	.30
Minor—Yellow and green .....	.25	Narcissiflora—Mixed .....	.35
ALLIUM azureum—Deep sky blue .....	.25	Pearcei—Yellow .....	.35
Cernuum—Pink .....	.25	BELAMCANDA sinensis (Blackberry Lily)—	
Ciliatum—White .....	.25	Iris family. Orange, spotted red .....	.25
Cyanum—Blue, dwarf .....	.25	BIDENS dahlioides—Cosmos-like tuberous	
Falcifolium—Deep rose, dwarf .....	.25	rooted plant, with maroon flowers .....	.25
Flavum—Yellow, South Africa .....	.25	BLETILLA hyacinthina—Chinese terrestrial	
Moly—Sulphur yellow .....	.20	orchid; amethyst-purple .....	.25
Neapolitanum—White, good cut flower .....	.20	BLOOMERIA crocea—Golden yellow; like a	
Ostrouskianum—Purple .....	.25	Brodiaea or Allium .....	.25
Peninsulare—Deep pink .....	.25	BOUSSINGULTIA baselloides (Mignonette	
Roseum—Pale rose, tall .....	.25	Vine)—White, fragrant; tuberous root .....	.25
Schoenoprasum—Light purple .....	.25	BRODIAEA coccinea—Scarlet, green tips .....	.25
Snowball—Snow white, tall .....	.25	Coronaria—Purple, wax-like .....	.15
Sphaerocephalum—Lilac-purple, very tall .....	.25	Ixioides—Golden yellow .....	.25
ALSTROEMERIA—Mixed .....	.30	Laxa—Violet-purple .....	.25
AMARYLLIS belladonna major—Pink, fragrant	.35	Multiflora—Violet .....	.15
(See also Hippeastrum.)		Terrestris—Violet .....	.25
ANEMONE de Caen—Single mixed .....	.20	Vulbilibis—Rose-pink; twining stem .....	.25
St. Brigid—Double and semi-double mixed .....	.25	BULBINELLA robusta—Eremurus-like plant	
His Excellency—Vivid scarlet .....	.35	from South Africa; golden yellow flowers .....	.25
ANOMATHECA—See Lapeyrouisia.		CALLA—See Zantedeschia.	
ANTHOLYZA aethiopica—Orange .....	.25	CALOCHORTUS albus—Pearly white .....	.15
ANTIGONON leptopus (Queen's Wreath)—		Catalinae—Lilac .....	.25
Pink .....	.25	Citrinus—Lemon-yellow, brown eye .....	.15
ARISAEMA draconitium—Bright green .....	.25	Kennedyi—Flame-colored .....	.25
Griffithii—Rich purple, green veins; fine .....	.35	Leichtlini—Cream, banded green .....	.25
Himalayan species—Mixed .....	.25	Luteus—Yellow .....	.25
Speciosa—Dark purple .....	.35	Maweanus—Lavender and white, dwarf .....	.20
Triphyllum (Jack-in-the-Pulpit)—Purple and		Plummerae—Lilac-purple, very showy .....	.25
green .....	.20	Splendens—Deep purple .....	.25
Wallichiana—Brown, striped white .....	.35	Venustus—White or lilac, red spot on each	
ARISTEA capitata—Deep blue .....	.25	segment, yellow center .....	.15
Lucida—Wedgewood blue .....	.25	Venustus El Dorado—Fine hybrids, many	
ARUM italicum—White, tinged green .....	.20	colors mixed .....	.25
Maculatum—Cream, spotted purple .....	.25	Vesta—Hybrids, many colors mixed .....	.25
Pictum—Purplish black .....	.20	CAMASSIA leichtlini—Sky blue .....	.25
ASCLEPIAS curassavica—Scarlet .....	.25	CANNA—Mixed .....	.25
Sulphurea—Primrose yellow .....	.25	CHIONODOXA luciliae—Blue and white .....	.25
Tuberosa—Orange .....	.25	CHLIDANTHUS fragrans—Yellow .....	.25
ASPHODELINE lutea (King's Spear)—Yellow	.25	CHLOROGALUM pomeridianum — Native	
BABIANA—Cape Irid, similar to Sparaxis.		bulb; many feathery white flowers on tall	
Cream .....	.30	stems .....	.25
Stricta—Blue shades mixed .....	.25	CHRYSOBACTRON hookeri — Asphodel-like	
White .....	.30	plant from New Zealand. Golden yellow	
Yellow—Dwarf .....	.30	flowers .....	.25
BEGONIA—Tuberous rooted.		CLIVIA miniata—Amaryllis-like; orange .....	.35
Single—White, pink, scarlet or mixed .....	.25	COLCHICUM autumnale—Crocus-like; fall	
Double—White, pink, yellow, scarlet or		blooming. Mauve or purple .....	.25
mixed .....	.25	COMMELINA coelestis (Sky Flower)—Blue .....	.25
		Coelestis alba—White .....	.25

	Per Pkt.		Per Pkt.
CONVALLARIA majalis (Lily of the Valley).....	.25	Leucantha—Mauve .....	.25
COOPERIA drummondii (Rain Lily)—White .....	.15	Leucantha—White .....	.25
Pedunculata—White; larger .....	.25	Maculata—Orange and yellow shades, red eye .....	.25
CORYDALIS tuberosa—Lilac-pink; fern-like foliage .....	.25	Micrandra—Old rose, black eye .....	.25
CRINUM longifolium—White .....	.35	Polystachya—White, tinged red .....	.25
Moorei—Pink .....	.35	Scariosa—Mauve, yellow eye .....	.25
List of other varieties on request subject to crop		Spectabilis .....	.25
NOTE: Crinum seeds should be planted immedi- ately after they are ripe, as they do not keep long in storage.		Viridiflora—Light green, black eye .....	.25
CROCUS iridiflorus (byzantinus)—Lilac .....	.25	Mixed .....	.20
CYCLAMEN Crinum King—Crimson .....	.25	IXIOLIRION pallasii (montanum)—Pretty Al- pine bulbs, allied to Alstroemeria. Umbels of blue flowers .....	.30
Hederaefolium—Rose-pink .....	.25	LACHENALIA (Cape Cowslip)—A lovely group of Cape bulbs, allied to Scilla. Great diversity of form and coloring.	
Magnificum—White with carmine eye .....	.25	Aurea—Deep orange .....	.25
Perle von Zehlendorf—Dark salmon .....	.25	Glaucina—White, red, yellow or bluish .....	.25
Rose von Marienthal—Soft pink .....	.25	Orchoides—White, yellow, red or blue .....	.25
CYRTANTHUS mackeni—White .....	.35	Pendula—Yellow and red, tips red-purple .....	.25
O'Brieni—Red .....	.35	Pustulata—White, tinged red .....	.25
Parviflorus—Scarlet, tall .....	.35	Reflexa—Creamy yellow, well opened .....	.25
DICENTRA chrysantha—Golden yellow .....	.25	Roodiae—Deep blue .....	.25
DIERAMA pulcherrima—Cape Irid, like a very tall Ixia. Graceful racemes of nodding, bud- like flowers in shades of pink .....	.25	Tricolor—Yellow, green and red-purple .....	.25
DIOSCOREA batatas (Cinnamon Vine)— Spikes of cinnamon-scented white flowers .....	.25	Unicolor—Purple .....	.25
ERANTHIS hyemalis (Winter Aconite)—Yel- low .....	.25	Unifolia—White, tinged red or blue .....	.25
EREMURUS bungei perfectus—Golden orange .....	.25	Mixed—Several species .....	.20
Himalaicus—Snowy white .....	.25	LAPEYROUSIA—Cape Irid, related to Free- sia.	
Olgae—Pale lilac .....	.25	Cruenta—Rose-carmine .....	.25
Turkestanicus—Brown, edged white .....	.25	Cruenta alba—White .....	.30
Hybrids—Mixed .....	.25	Juncea—Rose-pink .....	.25
FREESIA Aurora—Yellow .....	.25	LATHYRUS tuberosus—Tuberous rooted per- ennial, allied to the Sweet Pea. Rose, frag- rant .....	.25
Rainbow—White, yellow, salmon and lilac, mixed .....	.15	LEUCOCORYNE ixioides odorata—Closely al- lied to Milla biflora. Native of Chile. Flow- ers light blue, fragrant .....	.25
FRITILLARIA biflora (California)—Chocol- ate .....	.25	LIBERTIA grandiflora—New Zealand Irid, like Moraea. Fine white flowers .....	.25
Cirrhusa (India)—Purple and old gold .....	.35	LILIUM—See separate list in this folder.	
Delphinensis (tubaeformis) (Europe)—Wine- purple, spotted yellow .....	.25	MILLA biflora (Mexican Star Flower)—Pure white. Intensely fragrant in evening .....	.25
Imperialis (Crown Imperial) (Asia)—Mixed .....	.25	MORAEA—This genus is found principally in South Africa, and replaces Iris in that re- gion. Resembles Iris closely.	
Lanceolata (Checker Lily) (California)— Purple, checkered greenish yellow .....	.25	Iridioides johnsoni—White, marked with li- lac and yellow; tall .....	.20
Lilacea (California)—White, veined green .....	.25	Polystachya—Lilac .....	.25
Meleagris (Guinea Hen Flower) (Europe)— Mixed .....	.25	Spathacea—Yellow, marked purple .....	.25
Pudica (California)—Yellow .....	.25	Tripetala—Clear blue .....	.25
Recurva (California)—Scarlet and yellow .....	.25	Villosa—Purple, blue-black marks .....	.25
Seropsis (India)—New introduction. Color unknown as yet. Try it .....	.25	MUSCARI armeniacum (Grape Hyacinth)— Deep cobalt blue; large .....	.20
GALANTHUS nivalis (Snowdrop)—White, tipped green .....	.25	Heavenly Blue—Sky blue .....	.15
GALTONIA candicans (Giant Summer Hy- acinth)—White, bell-shaped flowers; tall .....	.20	NARCISSUS bulbocodium citrinus (Hoop Pet- ticoat Daffodil)—Clear yellow, dainty .....	.35
Princeps—White, marked green; shorter .....	.25	Cyclamineus—Yellow, reflexed .....	.35
GEISSORHIZA hirta—Cape Irid, allied to Ixia. Bright red .....	.25	King Alfred—Pure yellow, very large .....	.35
GLADIOLUS—See Spring Catalog.		Poeticus—White, scarlet eye .....	.25
GLORIOSA superba (Climbing Lily)—Lily- like flowers, red and yellow .....	.35	Triandrus albus (Angels' Tears Daffodil)— Creamy white .....	.35
GLOXINIA—Mixed .....	.25	Giant Flowering—Mixed .....	.25
HEDYCHUM gardnerianum (Garland Lily)— Yellow .....	.25	Short Cupped Varieties—Mixed .....	.25
Hybrids—Indian strain, mixed .....	.25	NERINE—Mixed Hybrids .....	.50
HEMEROCALLIS—Pale yellow, gold and or- ange, mixed .....	.25	NOTHOSCORDUM fragrans—Tropical Ameri- can bulb, allied to Brodiaea. Umbels of white flowers, on tall stems. Delicate fra- grance .....	.15
HEXAGLOTTIS virgata—Cape Irid, resem- bling a Tigridia or Homeria in shape. Bright yellow .....	.25	NYPHAEAE (Water Lily).	
HIPPEASTRUM johnsoni—Crimson, striped white .....	.35	Bissetti—Clear pink .....	.25
Hybrids—Mixed .....	.35	Dentata superba—Pure white .....	.25
HOMERIA collina aurantiaca—Cape Irid, very like the "Peacock Iris" (Moraea glaucopsis) in habit and shape of flower. Bright red .....	.20	George Huster—Rich crimson. Hybrid .....	.30
HYACINTHUS amethystinus—Light blue .....	.25	Sturtevanti—Bright red .....	.25
Azureus—Muscari-like; blue, fragrant .....	.25	Zanzibarensis azurea—Bright blue .....	.30
Candicans—See Galtonia.		Mixed .....	.25
Orientalis (Dutch Hyacinth)—Mixed .....	.25	ORNITHOGALUM lacteum—White; large spike .....	.25
IPOMOEA digitata—Tuberous rooted vine, deep pink morning-glory-like flowers .....	.25	Pyramidale—White, green stripe on reverse .....	.25
IRIS—See separate list in this folder.		Thyrsoides (Chincherinchee)—White; fine .....	.25
IXIA incarnata (Clanwilliam Bluebell) .....	.25	Thyrsoides aureum—Golden yellow .....	.25
		Thyrsoides kewense—Pale yellow .....	.25
		OSTROWSKIA magnifica (Giant Bell-flower) —Pale blue; tuberous rooted .....	.25

	Per Pkt.		Per Pkt.
PANCRATIUM maritimum (Sea Daffodil)— Pure white, fragrant .....	.15	TIGRIDIA pavonia rosea—Rose-pink, center mottled .....	.25
PARADISEA liliastrum (St. Bruno's Lily)— Spikes of snowy white flowers .....	.25	Mixed Hybrids—Cream, yellow, orange, sal- mon, crimson, scarlet and lavender .....	.25
PHLOMIS tuberosa—Tuberous-rooted plant, allied to Salvia. Spikes of rose-purple flow- ers .....	.25	TRICYRTIS hirta (Japanese Toad Lily)— White, shaded violet. Leaves and stems downy .....	.30
PHORMIUM tenax (New Zealand Flax)—A noble plant, grown for its giant, Iris-like foliage. 6 to 9 feet .....	.25	TRILLIUM ovatum (Wake Robin)—Snowy white suffused pink .....	.25
PUSCHKINIA libanotica—Pretty Scilla-like bulb. Bluish white flowers; dwarf .....	.25	TRITOMA (Red Hot Poker)—Hybrids, mixed TRITONIA—Cape Irid, related to Sparaxis.	.25
RANUNCULUS French mixed—White, yellow, rose and scarlet .....	.15	Crocata—Flame-scarlet, dwarf .....	.25
ROMULEA rosea—Crocus-like Cape Irid. Red- lilac flowers with yellow throat .....	.25	Deusta—Orange .....	.25
ROSCOEAE cauleoides—Allied to Hedychium. Tuberous root. Flowers soft yellow, like a Gladiolus .....	.25	Lineata—White to pink; Gladiolus-like .....	.25
SCILLA campanulata (Wood Hyacinth)— Mixed .....	.15	Securigera—Copper red .....	.25
Italica—Pale blue, fragrant .....	.25	Squalida—Deep pink .....	.25
Nutans (English Bluebell)—Mixed .....	.25	TULIPA kaufmanniana (Water Lily Tulip) —Creamy white, splashed carmine on re- verse; yellow center; dwarf .....	.25
Peruviana—This is erroneously called "Cub- an Lily" or "Peruvian Hyacinth" by many dealers. It is a native of the Medi- terranean region. Fine, large spikes of blue flowers, in various shades. Distinct Sibirica (Siberian Bluebell)—Rich blue .....	.15	Sprengerii—Scarlet, yellow margin, brown eye .....	.25
SISYRINCHIUM bellum—Like a miniature Iris, with regular, 6-parted flowers. Blue Iridifolium—Primrose yellow .....	.25	Sylvestris—Yellow, fragrant .....	.25
Striatum—Bright yellow, striped darker ..	.25	Species mixed .....	.25
SPARAXIS Ariadne—White, outside violet ..	.15	Breeders mixed—Tall, late; largest sorts ..	.20
Fire King—Brilliant scarlet, yellow eye ..	.15	Cottage Mixed—Tall, graceful sorts .....	.20
Grandiflora alba—White .....	.20	Darwin mixed—Similar to Breeder group ..	.20
Grandiflora atropurpurea—Rich purple .....	.25	URGINEA maritima (Medicinal Squill)—Scil- la-like. White flowers with brown keels ..	.25
Jeanette—Soft rose, white eye .....	.15	VELTHEIMIA viridifolia—Broad, glossy dark green foliage, with wavy edges. Flowers Tritoma-like, coral pink .....	.35
Tricolor—Red, yellow and black .....	.25	WACHENDORFFIA thyrsoiflora—South Afri- can streamside evergreen. Foliage Tigridia- like. Flowers yellow and russet, on tall stems .....	.25
Tubiflora—Light yellow; distinct species ..	.25	WATER LILY—See Nymphaea.	
SPARONIA—Hybrid between Sparaxis and Tritonia. Mixed .....	.35	WATSONIA angusta—Orange-scarlet .....	.25
SPREKELIA formosissima (Jacobean Lily)— Fine dark crimson flowers .....	.20	Beatrice—Deep orange; evergreen .....	.25
STENANTHIUM robustum—Panicles of creamy white flowers .....	.20	Longifolia—Varies from pink to orange; fo- liage narrow, evergreen .....	.25
STREPTANTHERA cuprea—Closely allied to Sparaxis. Prevailing color combination is tango red, with purple zone and yellow eye; somewhat variable. Mixed .....	.25	Marginata—Rose-red .....	.30
		Meriana—Varies from rose to white .....	.25
		Pillansi—Orange .....	.25
		Versfeldi—White .....	.25
		ZEPHYRANTHES ajax—Golden yellow .....	.25
		Candida—White .....	.20
		Carinata—Rose; large .....	.35
		Texana—Yellow and copper .....	.30
		ZYGADENUS fremonti—California bulb allied to Camassia. Spikes of cream-colored flow- ers, with segments yellow at base .....	.25

## SEEDS OF ANNUALS AND PERENNIALS

The following seeds are offered as a result of my acquiring the retail business of Chageda Gardens. They are all fresh and of the best quality, and will give uniformly satisfactory results with proper care.

I offer a mixture of California wild flower seeds, for broadcasting in waste places. These will make a brilliant display through the spring and summer, with a minimum of care, and will self-sow and come up year after year, if weeds are kept down. 10 cents per packet; 50 cents per ounce.

Following the name of each plant will be found initial letters, designating its general character. "A" stands for "annual," "B" for "biennial," "P" for "perennial," "H" for "hardy," "HH" for "half-hardy," and "T" for "tender."

	Per Pkt.		Per Pkt.
ABRONIA (HHP)—Trailing rocky plant; pink .....	.10	AMARANTUS (TA)—A group of tropical an- nuals used in masses, for the brilliant ef- fects of their colored foliage and catkin- like spikes of red or purple flowers.	
ACHILLEA "The Pearl" (HP)—Pure white ..	.15	Abyssinicus—Drooping red spikes .....	.10
ACROCLINIUM (HA)—Everlasting. Double white, rose or mixed .....	.10	Caudatus (Love-lies-bleeding)—Blood red ..	.10
AGATHEA—See Felicia.		Tricolor splendens (Joseph's Coat)—Leaves of many colors; for bedding .....	.10
AGERATUM (HHA)—Blue or snow-white ..	.10	AMMOBIUM alatum (HA)—Everlasting; white .....	.10
AGROSTIS nebulosa (Cloud Grass) (HA)— Good for dry bouquets .....	.15	ANCHUSA italica (HP)—Gentian blue .....	.15
ALONSOA (TA)—Showy scarlet flowers. Al- lied to Antirrhinum .....	.10	Capensis (HA)—Like a large Forget-me- not .....	.10
ALYSSUM (HA)—Fragrant flowers; white, yellow, lavender or mixed .....	.10		

# GORDON AINSLEY    ::    ::    CAMPBELL, CALIFORNIA

	Per Pkt.
Blue Bird (HA)—Rich indigo blue .....	.25
ANTIRRHINUM (Snapdragon) (HP).	
Medium Tall Varieties—Amber Queen, Crimson Queen, Golden Queen, silver-pink, orange-scarlet, clear yellow, pure white, or in mixture .....	.10
Giant Varieties—Apple Blossom (rose and white), Canary Bird, Copper King, Old Gold, Snowflake, the Rose, or in Mixture .....	.25
AQUILEGIA (Columbine) (HB).	
Chrysantha—Yellow .....	.15
Coerulea—Blue and white .....	.15
Long-spurred Hybrids—Blue, pink, or mixed .....	.25
Long-spurred Hybrids—Orange and scarlet shades; new .....	.35
Mrs. Scott Elliott Strain—Long-spurred hybrids, mixed .....	.25
ARCTOTIS grandis (HHA)—Daisy-like; white, reverse lilac-blue, blue center .....	.10
ARGEMONE (Mexican Poppy) (HHA)—Creamy whitet to rich yellow, mixed .....	.10
ARMERIA formosa (Sea Pink) (HP)—Bright pink .....	.15
ASTER (Michaelmas Daisy) (HP)—These are not to be confused with the "Asters" sold by florists, which resemble Chrysanthemums. The latter will be found under Callistephus.) They are native plants, blooming in the fall, with masses of single flowers ranging from white to purple. Mixed .....	.10
BARTONIA aurea (HA)—Bright yellow .....	.10
BELLIS perennis (English Daisy) (HP)—Double pink, red, white or mixed .....	.10
BROWALLIA (TA)—Shades of blue, white center, mixed .....	.10
CALENDULA (Cape Marigold) (HHA)—Shades of orange, yellow and cream, mixed .....	.10
Sensation—Orange, golden yellow center .....	.25
Radio—Petals curled and twisted; new .....	.25
CALLIOPSIS (Annual Coreopsis) (HHA)—Shades of yellow, marked brown, mixed .....	.10
CALLISTEPHUS (China Aster) (HA)—This is the "Aster" of florists, not to be confused with the true botanical Aster, or Michaelmas Daisy.	
California Giant—Peach blossom, light blue, deep rose, dark purple, white or mixed .....	.15
American Beauty—Mixed .....	.10
Pompon—Mixed .....	.10
Single—Mixed .....	.10
CAMPANULA medium (Canterbury Bell) (HB)—Pink, blue or mixed .....	.10
Calycanthema (Cup and Saucer)—Pink, blue, white or mixed .....	.15
CARDIOSPERMUM halicacabum (Balloon Vine) (TA)—Dainty vine. White flowers, followed by balloon-like green pods .....	.10
CELOSIA (TA)—Allied to Amaranthus.	
Chitsei (Chinese Woolflower)—Yellow and red, mixed .....	.10
Cristata (Cockscomb)—Dwarf mixed .....	.10
Plumosa (Ostrich Plume)—Yellow, red or mixed .....	.15
CENTAUREA cyanus (Cornflower) (HA)—Blue, pink, white or mixed .....	.10
Imperialis (Sweet Sultan) (HHA)—Rose, lavender, purple, white or mixed .....	.10
CHEIRANTHUS allioni (Alpine Wallflower) (HBB)—Brilliant orange .....	.10
CHRYSANTHEMUM carinatum (Painted Daisy) (TA)—Brilliant colors, mixed .....	.15
Shasta Daisy (HP)—Hybrid between C. maximum and C. leucanthemum. Large single white flowers, 5 inches across. (The variety "Alaska") .....	.10
CINERARIA (HHA)—Mixed hybrids .....	.10
CLARKIA (HA)—Double salmon, scarlet, pink or mixed .....	.10
COIX lacryma-Jobi (Job's Tears) (TA)—A tall ornamental grass, bearing hard, bony seeds, which are strung into necklaces like beads in the East Indies, where it is a native .....	.10
COREOPSIS lanceolata grandiflora (HP)—An improved strain of the well-known single .....	.10
Flore pleno—Double; new; very attractive .....	.25
COSMOS (HHA)—One of the most useful late flowers, blooming until frost.	
Early Giant Single—Mixed .....	.10
Early Crested—Many come double. Mixed .....	.20
Late Giant Single—Mixed .....	.10
Late Crested—Many come double. Mixed .....	.15
DELPHINIUM (HP)—Perennial larkspurs, in many lovely shades of blue and purple. Several crops per season, if flowers are cut.	
Wrexham Hollyhock—Fine English hybrids .....	.50
Vanderbilt Hybrids—Lighter shades prevail .....	.50
Chageda Hybrids—Our own selection of the best English strains .....	.50
Ajaxis (Annual Larkspur) (HA)—Very attractive in masses. Dark blue, light blue, carnine, lilac, white or mixed .....	.15
DIANTHUS caryophyllus (Carnation) (HP). Chabaud's Giant Improved—Rose, white, yellow, crimson, red or mixed .....	.15
DOLICHOS lignosus (Australian Pea Vine) (HHP)—Vigorous vine; pink pea-shaped flowers .....	.10
ESCHSCHOLTZIA (California Poppy) (HHP) Fine mixed, many colors .....	.15
Ramona—Fruited, coppery gold, pink shading .....	.25
FEIJICIA amelloides (Blue Marguerite) (HHP)—Sometimes known as Agathe coelestis. Sky blue .....	.10
GAILLARDIA grandiflora "Dazzler" (HP)—Fine new strain; very choice .....	.25
GERBERA (Transvaal Daisy) (HHP)—Mixed .....	.50
GEUM (HP)—Showy flowers, like little roses, on long stems; good for cutting.	
Mrs. Bradshaw—Bright scarlet .....	.15
Lady Strathdene—Large, yellow .....	.25
Orange Queen—Hybrid between the above .....	.25
GOETIA (HA)—Covered with brilliant, satiny flowers until frost. Double mauve, crimson, carnine or mixed .....	.10
GYPSOPHILA elegans (HP)—White. Good filler in bouquets. Sometimes called "Baby's Breath" .....	.10
HEILCHRYSUM (Strawflower) (HA) — A very popular "everlasting." Double gold, canary, orange, salmon, violet, white or mixed .....	.10
IBERIS (Candytuft) (HA)—Lavender, rose, lilac, white or mixed .....	.10
IMPATIENS (Balsam) (TA)—Mixed .....	.10
LATHYRUS latifolius (Perennial Pea) (HP) — A good hardy climber, with pea-shaped flowers. Red, pink, white or mixed .....	.15
LOBELIA Crystal Palace—Fine blue bedder ..	.10
LUPINUS hartwegi (HA)—Rose, dark blue, sky blue, white or mixed .....	.10
Polyphyllus (HP)—Rose, blue, white or mixed .....	.10
MYOSOTIS palustris (Forget-me-not) (HP)—Pink, blue, white or mixed .....	.10
PANSY (Viola tricolor) (HHP). Giant Trimardeau—Large; many colors mixed .....	.15
Chageda Mixture—Best selection from leading strains .....	.25
Masterpiece Mixture—Remarkable for size and color. Fruited, appearing double .....	.25
Swiss Giant—New strain, with large flowers, long stems, and unusual colors .....	.50
PETUNIA (HHA)—A wonderful selection below.	
Ruffled Monster—Mixed .....	.50
Double Ruffled Monster—Mixed .....	1.00
Giants of California—Giant flowers; dwarf habit .....	.35
Burbank's Blue—Shades of blue and purple .....	.25
Howard's Star—Purple with white star .....	.15
Hybrida pendula—Trailing; for baskets. Pink, blue, white or mixed .....	.20
Rosy Morn—Fine single pink bedder; dwarf .....	.25
Prolific Purple—Royal purple bedder; dwarf .....	.25
PENSTEMON barbatus (Chelone) (HP)—Coral red .....	.10

GORDON AINSLEY :: :: CAMPBELL, CALIFORNIA

	Per Pkt.
RUDBECKIA (Cone Flower) (HA)—Semi-double golden yellow flowers on long stems; good for cutting .....	.10
SALPIGLOSSIS (HHA)—Closely related to Petunia, and of similar habit, but taller. Color range is quite different, with many bizarre combinations of brilliant shades. Mixed .....	.15
SCABIOSA (Mourning Bride) (HA)—Fine, improved strain of this old favorite. Rose, flesh, azure, scarlet, black, white or mixed ..	.10
STOCK (Matthiola incana) (HA). Beauty of Nice—Delightfully fragrant. Many are double. Old rose, lavender pink, flesh pink, crimson, lavender, violet, canary, white or mixed .....	.15
SWEET PEA (Lathyrus odoratus) (HHA). Early flowering Giant Spencer—These are planted largely by florists, for early cut flowers. Will bloom about four weeks earlier than standard sorts.	
All White—One of the best wavy whites .....	.15
Ball Rose—Sparkling rose .....	.15
Blue Bird—One of the best violet-blues .....	.15
Burpee's Orange—The best clear orange .....	.25
Chevalier—Strong growing rose .....	.15
Columbia—Salmon pink, white wings .....	.15
Fair Maid—Blush pink and salmon, white ground .....	.15
Giant Rose—New, mammoth rose .....	.25
Glitters—Very popular cerise-scarlet .....	.15
Grenadier—Fine, new glowing scarlet .....	.25
Harmony—Standard lavender, long stems .....	.15
Hercules—Giant pure pink .....	.15
Illumination—An excellent salmon-cerise ..	.15
Imperial Pink—New. Gigantic clear pink ..	.25
Miss Louise Gude—Brilliant pink show type	.15
Mrs. Kerr—Best salmon; large, wavy .....	.15
New Blue—Large deep blue .....	.15
Orange King—New. Deepest glowing orange	.25
Pink Cherokee—New. Pink-salmon on cream	.25
Rose Dore—Rose pink suffused orange .....	.15
Snowstorm—Improved long stemmed white ..	.15
Spring Song—Exquisite cream pink. New ..	.25
The Beauty—Unusual shade; fiery rose ..	.15
Torch—An excellent salmon-rose .....	.15
True Blue—Good stem; large flower .....	.15
Vulcan—Glistening scarlet; sunproof .....	.15
White Harmony—Fine pure white. New .....	.25
Zvolanek's Rose—A giant exhibition rose-pink .....	.15
Offer No. E-81. One packet each of nine of above varieties of our selection .....	1.00
Offer No. E-82. CHAGEDA MIXED EARLY SPENCERS, in excellent selection of varieties. Packet 15c; 1-2 oz. 40c; 1 oz. 75c; 1-4 lb. \$2.50; lb. ....	7.50
<b>STANDARD GIANT SPENCERS</b>	
For Spring and Summer Bloom	
Blue and Purple	
Commander Godshal—A beautiful rich, violet blue.	
Royal Purple—Rich purple; one of the finest varieties.	
Deep Pink Or Rose	
Apple Blossom Spencer—Standard light rose; wings primrose flushed rose.	
Hawlmarm Pin—Rose pink flushed and shaded with salmon.	
Lavender	
ASTA OHN SPENCER—Rich lavender; one of the best; flowers large.	
Hawlmarm Lavender—Splendid large lavender.	
Light Pink	
Blanche Ferry Spencer—Large flowers, pink and white.	
Countess Spencer—A lovely clear pink, shading deeper at the edge.	
Elegance—Blush lilac, suffused pink.	
Elfrida Pearson—Large shell pink.	
Hercules—Giant pure pink.	
Picture—Pale pink suffused apricot.	
Mary Pickford—Dainty cream pink, suffused salmon.	
Maroon	
Warrior—Rich maroon flushed bronze.	
Orange and Salmon	
Barbara—Superb self-colored salmon.	
Guinea Gold—Splendid glowing orange, shaded gold. Packet 15c.	
Helen Lewis—Orange pink; wings orange salmon.	
Primrose Or Light Yellow	
Dffodil—The best yellow yet introduced. Packet 15c.	
Dobbie's Cream—Deep primrose.	
Scarlet	
Defiance—New. A beautiful orange scarlet; a fine large flower. Packet 25c.	
Fiery Cross—Large; intense orange scarlet.	
King Edward Spencer—Rich, crimson scarlet; large.	
White	
Constance Hinton—One of the largest varieties; flowers white; black seeded.	
King White—Gigantic flowers; pure white.	
Snowball—Undoubtedly the finest pure white variety. Packet 25c.	
White Spencer—Pure white; large size.	
Price, any of the above varieties, except where noted, 10c per packet; 40c per oz.; \$1.25 per 1-4 lb.	
Chageda Giant Spencers	
Mixed—A very well blended mixture of the above sorts, and some of the newer ones, not yet introduced. Packet 10c; 1 oz. 30c; 1-2 lb. \$1.00; 1 lb. \$3.00.	
Offer No. E-80. Collection of GIANT SPENCER SWEET PEAS—One packet of 12 named varieties of our selection \$1.00.	
Per Pkt.	
TAGETES (Marigold) (HHA)—A very desirable flower in any garden. Needs no description.	
Tall African—Golden Ball, Lemon Ball or mixed .....	.10
Dwarf French—Golden Ball .....	.10
VERBENA (HHP)—Beautiful bedding plants, giving a gorgeous display throughout the summer. Treat as annuals in cold climates. Pink, scarlet, blue, yellow, white or mixed .....	.10
Hybrid Giants—Extra large and fine. Mixed ..	.15
VIOLA cornuta (Tufted Pansies)—A sheet of color throughout the season. Blue, yellow, white or mixed .....	.10
ZINNIA (TA)—Gorgeous summer bloomer.	
Dahlia Flowered—Choice mixture .....	.25
Giants of California—Very large .....	.25
Pompon—Miniaures; fully double. Fine bedders. Salmon-rose, scarlet, canary, white or mixed .....	.15

Postage paid on all seed orders of \$1.00 or over

**MISCELLANEOUS BULBS,  
TUBERS AND RARE PLANTS**

**ACHIMENES**

Profuse blooming tuberous plants for greenhouse or conservatory. Closely allied to Gloxinias and require same culture. Three or more should be planted in a pot. They flower in the summer months for a period of 8 to 10 weeks. The tubers are very small.

	Each	Doz.
<b>GALATEA.</b> Large deep lavender .....	.35	3.50
<b>MAGNIFICA.</b> Beautiful violet .....	.30	3.00
<b>PURITY.</b> Large pure white .....	.25	2.50
<b>PURPLE QUEEN.</b> Fine rich purple .....	.30	3.00
<b>SUPREME.</b> Lavender with light center .....	.35	3.50
Superfine mixture .....		2.00

Collection of 3 each variety; 15 good strong tubers for 3.25



**Acidanthera Bicolor**

**ACIDANTHERA**

**BICOLOR.** Lovely fragrant flower; creamy white with chocolate blotch on the inside. Native to South Africa. About 15 inches high. Very rare. Grows outside with protection. Supposed to be the intermediate link between Gladiolus and Ixia. Our exhibits of Acidanthera at the California Flower Festival created a great deal of interest, thousands of flower-lovers seeing it in bloom for the first time. Supply limited.

	Each	Doz.
Large bulbs .....	.75	7.50
Medium size bulbs .....	.50	5.00

**ACONITUM (Monkshood)**

Lovely hooded flowers blooming from midsummer to late fall. Grow in either sun or shade. The tubers are poisonous. Delivery from late fall to early spring.

	Each	Doz.
<b>AUTUMNALE.</b> Large dark blue flowers .....	.40	4.00



**Agapanthus Umbellatus**

**AGAPANTHUS (African Lily)**

**UMBELLATUS (Blue Lily of the Nile).** Lovely Summer and Fall flowering plant of the Lily family, bearing a large number of beautiful flowers in umbels, on long stems. Has long blooming period. Desirable for indoor decoration. Requires protection where winters are severe. Can be grown in tubs for conservatory or terrace.

	Each	Doz.
Strong root divisions .....	.75	7.50
Medium size divisions .....	.35	3.50
Established plants in tubs, \$3.00; \$4.00; \$5.00; \$10.00; \$15.00; \$20.00; \$25.00 and \$50.00. Shipped express charges collect.		

**UMBELLATUS ALBUS.** Same as above, but having white flowers. Strong divisions .....1.00 10.00

**AGLAONEMA**

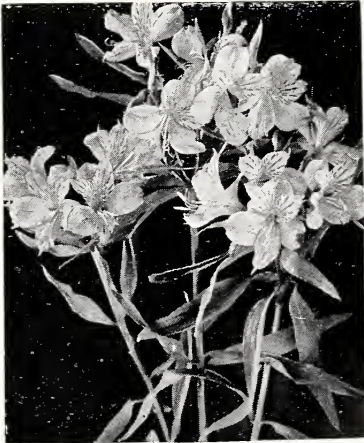
**COSTATUM.** A dwarf-growing Aroid suitable for the conservatory or window garden. Very compact heart-shaped leaves of dark, shining green, with white midrib and scattering blotches ..... 1.00



**Agapanthus Umbellatus Albus**



Allium



Astroemeria Aurantiaca



Astroemeria Pulchella

## ALLIUM

A large family of plants that have until recently, been little known. However, through the efforts of The American Horticultural Society and from the many articles appearing frequently in their official Bulletin, "The National Horticultural Magazine," a great deal of interest in this group of bulbs has been aroused. The flowers are borne in large umbels and are very beautiful, the blooms often being very fragrant. Clumps of a dozen or more bulbs will form pleasing patches of color in the border. Excellent for naturalizing or for the rock garden. Once established, no further care is required and in a short time will form large colonies. Following is a list of species suitable for both Spring and Fall planting. Should you desire to obtain a complete collection, order all species now and those requiring Fall planting will be shipped at the proper time.

	Each	Doz.
<b>BREVISTYLUM</b> (Alpine Onion). Erect umbels of showy deep rose flowers with stems a foot tall. Requires moist humus soil .....	.35	3.50
<b>CERNUUM</b> . Native. Wide flat foliage and nodding heads of clear pink flowers. Very fine. Height 10 to 12 inches .....	.20	2.00
<b>CYANEUM</b> . Dwarf form with pendant heads of light blue in May and June .....	.35	3.50
<b>DESERTICOLA</b> (Desert Onion). Blooms in early Spring. Large umbels of white flowers; petals marked with dark midrib .....	.20	2.00
<b>HELLERI</b> . Crimson-pink flowers, in flat umbels .....	.15	1.50
<b>MUTABILE</b> . Pretty clusters of white flowers, 6 inches high .....	.15	1.50
<b>PULCHELLUM</b> . Lovely heads of rose; blooming in late Summer .....	.25	2.50
<b>RUBY GEM</b> . Beautiful rose shade; very rare ....	.30	3.00
<b>THIBETICUM</b> . Dwarf. Flowers lilac-mauve. Blooms in early Summer. Rare type, fine for rock garden .....	.30	3.00
<b>VALIDUM</b> . Grows in large clumps 1 to 2 feet high, with showy rose colored flowers. Moisture loving .....	.30	3.00

1 each of above 10 species labeled, 2.25 postpaid

1 each of 6 species, our selection, labeled, 1.00

## ALOCASIA

Tropical plants suitable for patio or water gardens. Hardy only in the far South. Otherwise use only as Summer bedding plants.

	Each	Doz.
<b>INDICA</b> . Fine subject for its stiff, arrow-like leaves; deep reddish-purple and lead-green color .....	1.00	10.00
<b>MACRORHIZA</b> . Tall green leaves. Very erect and dignified. ....	.75	7.50

## ALPINIA (Shell Flower)

Tuberous plant, semi-tropical; same climatic requirements as Alocasia. The green leaves have a spicy odor when crushed.

	Each	Doz.
<b>FORMOSANA</b> . Pure white flowers, slightly veined crimson. Dainty but striking. Strong divisions .....	1.00	10.00
<b>NUTANS</b> . Mottled yellow-orange flowers suggest sea-shells. Strong divisions. ....	1.00	10.00



## ALSTROEMERIA (Peruvian Lily)

Many lovely spikes of golden yellow, orange and various shades of pink to rose flowers; some beautifully spotted. Excellent as cut flowers and keep for a long time. Require rich soil, and plenty of moisture, with good drainage.

	Each	Doz.
AURANTIACA. Beautiful shade of orange with brown spots .....	.25	2.50
CHILENSIS. Mixed shades of pink, rose and orange, some of which are spotted brown. ....	.50	5.00
LUTEA. Lovely golden yellow .....	.30	3.00
PULCHELLA (A. psittacina) (The Parrot Lily). Crimson, splashed green and mahogany. Height 1 1-2 to 2 feet. Very colorful and rare .....	.75	7.50

## AMAR-CRINUM

HOWARDI. A true bigeneric hybrid produced by crossing Crinum Moorei on Amaryllis Belladonna. Soft pink flowers on stems three feet tall are freely produced during the summer months. Requires the same culture as the various Crinums or Amaryllis. Stock limited. ....

## AMARYLLIS

BELLADONNA MAJOR. Fine pink trumpet-shaped flowers in August. Fragrant. (Also see Hippeastrum). ....

## AMOMUM (Elettaria)

CARDAMOMUM. Decorative for its foliage only. Is of particular interest for the thick, leathery leaves which, when crushed, give out a pleasing "gingery" odor. Semi-tropical. Requires considerable moisture .....

## AMORPHOPHALLUS

RIVIERI. A curious and interesting Aroid, which blooms without soil or moisture when the bulb is 4 years old. Flower resembles a gigantic reddish Calla and appears before the leaves on stems rising 3 to 4 feet high; the flower is soon followed by interesting massive-looking foliage which is supported on a thick prettily marked stem.

	Each	Doz.
Strong flowering 4 year old bulbs .....	10.00	110.00
Strong 3 year old bulbs .....	4.50	50.00
Strong 2 year old bulbs .....	2.75	30.00

## ANEMONE JAPONICA

Lovely fall flowers in many colors. The blooms are similar in shape to the Spring flowering DeCaen type, but are much taller. They bloom from September until late November.

	Each	Doz.
PRINCE HENRY. Rich pink .....	.30	3.00
QUEEN CHARLOTTE. Silvery pink, like a La France rose, semi-double .....	.30	3.00
WHIRLWIND. White, semi-double .....	.30	3.00

## ANTHERICUM LILIAGO

(ST. BERNARD'S LILY)

Pure white flowers of the Lily family. Long grassy leaves. Require sun and a rich, damp soil. Fall and spring delivery .....

## ANTIGONON (Queen's Wreath)

LEPTOPUS. A tuberous-rooted climbing vine bearing coral-pink flowers in great profusion during the late summer and early fall months. Requires full sun and the warmer the better. Strong tubers .....

## APIOI

TUBEROSA (Tuberous-rooted Wisteria). Clusters of rich deep purple flowers which have a delicious violet fragrance. Good for trellises ....



Amaryllis Belladonna Major



Anemone (Wind Flower)



Arum Italicum



Begonia—Double



Begonia Crispa



Begonia Narcissiflora

**ARISAEMA**

Each Doz.

**TRIPHYLLUM.** Unique Aroid for shady nooks. (Jack-in-the-Pulpit). Flower in May, followed by attractive berries in late Summer ..... .25 2.50

**ARISTEA**

Fibrous-rooted Irids, much prized in South Africa, where they are native. Beautiful blue flowers on tall stems, 2 to 6 feet. Habit of *Moraea iridioides*, but much larger. Stock limited.

Each

**CAPITATA.** Deep blue; 6 feet ..... 1.00  
**LUCIDA.** Wedgewood blue; 2 feet ..... 1.00

**ARRHENATHERUM**

Each Doz.

**BULBOSUM VARIEGATUM.** Dwarf form of ribbon grass with white and green leaves. Propagates from small bulbs ..... .40 4.00

**ARUM**

Plants properly belonging under this heading will be found in the Fall catalog. Many genera of Aroids are commonly listed as "Arums" for trade purposes, some of these being *Amorphophallus*, *Sauromatum*, *Dracunculus*, *Zantedeschia*. These will be found in my catalog under their correct names. (See cut of *Arum italicum* on preceding page.)

**ASCLEPIAS**

Each Doz.

**TUBEROSA.** Umbels of bright orange colored flowers in midsummer. Requires sunny situation and rich, moist soil ..... .35 3.50

**BEGONIA (Tuberous Rooted)**

Begonias are among the most beautiful of all summer flowering plants. They are in constant bloom, when well cared for, from early July until cut down by frost in the fall.

Our Begonias are grown from seed imported directly from England, and are without exception of the finest stock offered anywhere in this country. It is impossible to describe adequately the exquisite refinement of form, the many interesting varieties or types and the gorgeous colors.

Begonias are adapted to use in window boxes, as pot-plants in conservatory, sunroom or terrace; or, as bedding plants in a partly shaded location. An ideal spot is under oak trees or in the rock garden where they will be shaded during the heat of the day.

We offer many distinct types of Begonias, all of which are of entirely different formation. Each type contains a full range of colors from pure white, delicate pink and rose to the most brilliant reds and scarlets; also pastel shades of salmon, apricot and soft yellow. The autumn tones of orange and golden bronze are in great demand for table decorations at dinners or parties during the harvest season. They should be arranged in low bowls or trays previously filled with moist moss and ferns. Also much used as dinner favors or corsage bouquets.

**CULTURAL REQUIREMENTS**

Begonias are so easy to grow that anyone can grow them to perfection when the culture is fully understood. The tubers are ready to send out in January and can be supplied as late as the last of April. Should they be procured early, no sign of growth will be noticeable and they should be stored and left undisturbed until the first of April, when the tubers will show a pink swelling in the center. They should then be planted in shallow wooden boxes, placed in a greenhouse or cold-frame, to be later planted in beds outside after all danger of frost has passed. If flower pots are used, place 1 tuber in a 5" pot, or 3 tubers in a 7" pot, which will give a better effect and is more satisfactory. Be sure not to pot the tubers too deep; they should be placed so that the top of the crown is slightly above the soil. Water very lightly at first, until active growth has started, increasing the supply of moisture as the plant de-

velops, but at no time should they be overwatered. This can be overcome to a great extent by providing good drainage. An ideal soil for Begonias is 1-3 well-decayed leaf mold, 1-3 rich garden loam and 1-3 sharp sand. Do not mix stable or other manure with the soil, but use as top dressing, when planted in beds outside (which should be slightly raised).

For the potted plants, weak liquid manure should be given twice a week when the first flower buds make their appearance. To get best results, all the first lot of buds should be picked off, which will make stronger plants and larger flowers.

Should Begonias be grown in the conservatory or green house, care must be taken to shade them from the hot sun, just enough to prevent scorching. Atmosphere must be kept moist by sprinkling sides and floor, also syringing the plants on bright mornings. To dampen foliage when days are cloudy may cause mildew.

**STORING BEGONIA TUBERS**

As the plants cease to bloom, moisture should be gradually decreased until foliage turns yellow and falls off, after which time they must start to dry out.

When fully dry, the pots may be stored away on their sides in a dark place where the temperature is low, but never below freezing. The tubers may also be lifted, cleaned of soil and thoroughly dried, then stored in boxes in Holland peat, sawdust or very dry sand. Should be kept dry until planting time again. Colors: Pink, red, rose, white, yellow, orange scarlet or mixed.

	Each	Doz.
<b>GIANT SINGLE.</b> Flowers are of mammoth size, often six inches across. Colors as above .....	.20	2.00
<b>GIANT DOUBLE.</b> So double that they often have the appearance of round balls of velvet-like petals. Colors as above .....	.25	2.50
<b>CRISPA.</b> An extra fine strain of single Begonia with fluted and ruffled edges. Colors same as singles .....	.25	2.50
<b>GIANT CRISTATA.</b> The most beautiful of all. Large, ruffled edge blooms with solid crested center. Called the doubled ruffled Begonia. Colors same as singles .....	.25	2.50
<b>FRAU HELENE HARMS.</b> Dwarf and compact, with perfect crown of double yellow flowers. Very free blooming. Fine for bedding or borders .....	.50	5.00
<b>NARCISSIFLORA.</b> The male blooms of this type resemble a large trumpet Daffodil. Mixed pastel shades. Supply limited .....	.35	3.50
<b>PEARCEL.</b> The original parent of all yellow tuberous Begonias. Sulphur yellow flowers on long stems .....	.35	3.50
<b>PENDULA.</b> Splendid for growing in hanging baskets or as individual specimens in pots where the branches drooping over the edge produce masses of attractive showy flowers. Choicest colors, mixed .....	.50	5.00
<b>SUTHERLANDI.</b> Slender and graceful, bright wine-red stems, leaves green with red veins and margins; flowers numerous, coppery red .....	.35	3.50

**BELAMCANDA (Blackberry Lily)**  
(Synonym: *Pardanthus*)

	Each	Doz.
<b>SINENSIS.</b> Large orange flowers, spotted brown, which last for only a short time. Belongs to the Iris family. The clusters of round, shining black seeds are said to resemble blackberries .....	.25	2.50

**BILLBERGIA**

	Each	Doz.
<b>NUTANS.</b> Tropical plant with long spikes of rose and green flowers edged with green. Can be grown outside where warm or make ideal subjects for pot plants or hanging baskets. Require abundance of moisture during growing season, during the summer months. Sprinkling the foliage is also beneficial, but very little water is needed during the winter .....	1.00	10.00



Begonia Pendula



Belamcanda Sinensis



Canna



Chlidanthus Fragrans



Clivia Miniata



Convallaria Majalis

### BLETILLA

**HYACINTHINA.** Beautiful Chinese terrestrial orchid, deep rosy lilac. Requires semi-shade with moist, well drained soil. Easy culture in temperate climates. Strong tubers ..... 1.00 10.00

Each Doz.

### BOUSSINGAULTIA (Madeira Vine)

**BASELLOIDES.** Rapid growing vine; heart shaped leaves of light green with racemes of feathery flowers, delightfully fragrant. Commonly called "Mignonette Vine" ..... .20 2.00

Each Doz.

### FANCY-LEAVED CALADIUM

Splendid ornamental foliage, dying down through the winter. The leaves arrow-shaped, marked with bright colors, red, green, yellow, purplish and sometimes a transparent white. Prefer a moist and half-shaded place with rich soil. They are fine for house plants and window boxes.

Fancy-leaved mixed varieties, 2.00 per doz.

Collection of 1 each of 12, fancy-leaved Caladiums, all labeled separately, our selection, 2.75

### CALADIUM ESCULENTUM

(See Colocasia)

### CANNA

Cannas have always been in demand and now with the wonderful new colorings and the improved size of flowers, they are even more popular. The large, handsome, ornamental foliage and beautiful spikes of bright flowers make the cannas ideal for mass plantings, backgrounds, borders or hedges. They may now be obtained in heights varying from 3 to 6 feet, and in colors of rose, orange, to pure white. Also some foliage is bright green and some a rich bronze.

Mixed colors ..... 1.00

Doz.

1 each of 12 named varieties; full range of colors, but our selection ..... 1.50

### CHLIDANTHUS

**FRAGRANS.** Sometimes called "Delicate Lily." The name doubtless refers to the clear rich yellow flowers, which resemble a miniature Amaryllis. Very fragrant. Hardy when well mulched ..... .25 2.50

Each Doz.

### CLIVIA (Imantophyllum)

**MINIATA.** Amaryllis-like plants with handsome evergreen foliage and large umbels of flowers of bright scarlet with yellow throat. A native of South Africa and named for a duchess of Northumberland and member of the Clive family. Make excellent house plants; spring flowering ..... 1.00 10.00

### COLOCASIA

**ANTIQUORUM ESCULENTA.** (Elephant's Ear). Grand tropical plant. A favorite for specimens on the lawn. Height 3 to 4 feet ..... .35 3.50

**ANTIQUORUM ILLUSTRIS (Black Caladium).** Subtropical foliage plant. Leaves blotched velvety black ..... .75 7.50

**MONORRHIZA NIGRA.** Leaves velvety green on purple stems ..... .75 7.50

### CALLA PALUSTRIS

The native wild Calla of the Eastern States. For marsh and aquatic gardens. Pure white ..... .25 2.50

(For other Callas, see Zantedeschia)

## CONVALLARIA MAJALIS

LILY OF THE VALLEY

For forcing, the pips are to be preferred, being grown under conditions tending to promote vigorous and early blooming. Twelve to eighteen pips may be planted in a 6-inch pot with all the fibrous roots carefully preserved, and keeping the crowns above the soil. Place them in a temperature of about 80 degrees, cover the crowns with loose moss and keep them constantly moist with tepid water. Doz. 100

Selected crowns for forcing ..... .65 4.75  
 Clumps of several crowns or buds best for planting outside .....3.50

## COOPERIA

	Each	Doz.
<b>DRUMMONDI.</b> (Evening Star). Native of Texas. Pure white flowers, very fragrant, blooming in the evening. Culture similar to <i>Zephyranthes</i> ..	.35	3.50
<b>PEDUNCULATA</b> (Prairie Lily). Similar to Drummondii, but larger and blossoms for a longer period .....	.50	5.00



Cooperia

## CRINUM

Although Crinums are tropical plants, they do well in this climate when given some protection. Plant with about two-thirds of bulb projecting above ground level except campanulatum, which should be covered. In cold climates, must be taken inside in winter. May be planted in tubs or large pots.

	Each	
<b>AMABILE.</b> Immense, dark green leaves. Stems purplish red; many glossy pink flowers; very fragrant	1.50	
<b>AMERICANUM.</b> Beautiful plant producing umbels of large lily-like white flowers .....	.75	
<b>ASIATICUM.</b> Large species, forming a magnificent rosette of dark green leaves. Clusters of fragrant white flowers .....	1.50	
<b>CAMPANULATUM.</b> Vigorous plant with wavy-margined strap-shaped leaves. Spikes of lovely bell-shaped flowers, rose-red .....	1.25	
<b>C. E. HOUDYSHEL.</b> Hybrid. The nearest to a red flower. One bulb will often bloom four or five times in one year .....	2.00	
<b>CAPENSE ROSEA.</b> Pink. Hardy. ....	.50	
<b>CAPENSE ALBA.</b> Same with white flowers .....	.50	
<b>EMPRESS OF INDIA.</b> Large plant, produces freely all summer umbels of drooping flowers, deep rose-colored or striped flesh pink .....	2.00	
<b>ERUBESCENS.</b> Flowers reddish outside, white inside. Native of Tropical America. Lovely plant for the conservatory or greenhouse .....	.50	
<b>FIMBRIATULUM.</b> Pure white with pink stripes through center of petals .....	.50	
<b>GIGANTEUM.</b> Considered one of the most beautiful species. Large pure white flowers with vanilla-like fragrance. Handsome, rich green foliage .....	1.50	
<b>J. C. HARVEY.</b> Hybrid. Flowers rosy-pink; large with drooping habit. Very fragrant. Blooms several times during a year .....	1.50	
<b>KIRKI.</b> Large white flowers with a reddish-purple stripe down the center of each petal on the outside, which shows through and gives the flower a pink tinge on the inside. The very beautiful wavy-edged leaves form a perfect rosette. The entire plant has a very rich tropical appearance .....	.50	
<b>KUNTHIANUM.</b> Native of New Granada. Flowers dull white, tinged rose-red, produced abundantly .....	.50	
<b>MOOREL.</b> From Africa. Does best in partial shade. The whole plant is of a very beautiful form, flowers clear pink .....	.50	
<b>MRS. BOSANQUET.</b> Hybrid. Large cup shaped blossoms of deep, glowing rose. One of the finest Crinums .....	3.00	
<b>POWELLI.</b> A very popular and beautiful hybrid with pink flowers resembling a lily; hardy .....	.50	
<b>POWELLI ALBUM.</b> Same with white flowers .....	.50	



Crinum Asiaticum

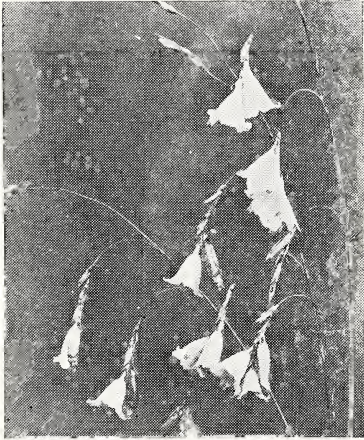


Crinum—C. E. Houdyshel

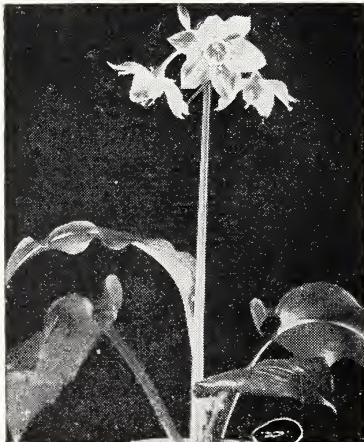
(Continued on next page)



Cyrtanthus



Dierama



Eucharis Grandiflora

	Each
<b>PEDUNCULATUM.</b> White, tinged green. The bulb grows nearly on top of the ground on large root-stock .....	2.00
<b>SCABRUM.</b> Leaves light green with wavy edges. Flowers white with rose keels .....	1.25
<b>VIRGINICUM.</b> Large flower of white and soft rosy pink .....	1.00

Collection of 6 choice Crinums, all different and labeled separately, our selection, \$2.50 (Priced .50 each.)  
 Special collection of 12 choice Crinums, all different and labeled separately, our selection, \$7.50. (Priced .50 to 1.50 each.)

## CYCLAMEN

One of the most beautiful flowers that blossom at Christmas. Are noted for their bright colored flowers and variegated foliage. Plant from March to Sept. Plant one bulb in a 5 or 6-inch pot so that one-third of the bulb is above the soil. Our Cyclamen bulbs are of the very best strain, and have a wide variety of colors.

	Each	Doz.
<b>PERLE OF ZEHLENDORF.</b> Dark salmon .....	.35	3.50
<b>ROSE OF ZEHLENDORF.</b> Light salmon .....	.35	3.50
<b>ROSE OF MARENTHAL.</b> Soft pink .....	.40	4.00
<b>BLOOD RED.</b> .....	.35	3.50
<b>BRIGHT RED.</b> .....	.35	3.50
<b>WHITE WITH CARMINE EYE.</b> .....	.45	4.50
Mixed Varieties .....		2.50

## CYPELLA

<b>HERBERTI.</b> Tigridia-like bulb from Argentina. Large yellow flowers. Stock limited .....	.75	7.50
--	-----	------

## CYRTANTHUS

Amaryllis-like bulbous plants from the Cape, with pendulous funnel-shaped flowers. Stock limited

	Each
<b>APRICOT.</b> Apricot pink .....	1.00
<b>MACKENI.</b> White .....	1.00
<b>PARVIFLORUS.</b> Scarlet .....	1.00
<b>O'BRIENI.</b> Clear red .....	1.00

All of these bloom better when established.

## DELPHINIUM

	Each	Doz
<b>ENGLISH HYBRIDS.</b> Selected strain of this English introduction. Spikes tall and large in diameter. Florets are large, the colors running in all shades of blue and lavender, some doubles ..	.50	5.00
<b>BELLADONNA.</b> Light blue, large size; a great improvement over the old variety .....	.25	2.50
<b>BELLAMOSUM.</b> A dark blue hybrid of the above ..	.25	2.50
<b>SINENSE.</b> Dwarf blue flowers .....	.30	3.00
<b>SINENSE ALBUM.</b> Dwarf white flowers .....	.30	3.00
<b>SINENSE TOM THUMB.</b> Miniature blue flowers ..	.35	3.00

## DICENTRA (Bleeding Heart)

<b>CANADENSIS</b> (Squirrel Corn). White, tipped rose. ....	.25	2.50
<b>EXIMIA</b> (Fringed Bleeding Heart). Pink .....	.25	2.50
<b>FORMOSA</b> (Dutchman's Breeches). Rose-purple. ....	.25	2.50
<b>SPECTABILIS.</b> Long raceme of heart shaped rosy pink flowers, with fern-like foliage. It thrives in a shaded position. Ideal for planting among ferns .....	.70	7.00

## DIERAMA (Wedding Bells)

	Each	Doz.
<b>PULCHERRIMA.</b> A lovely species of Sparaxis from the Cape of Good Hope. Height about 6 feet. Dainty bell-shaped, rose-colored flowers hang on slender stems, which arch gracefully ....	.50	5.00

## DIOSCOREA (Cinnamon Vine)

	Each	Doz.	100
<b>BATATAS.</b> A rapid growing summer climber with bright green glossy foliage and spikes of cinamon-scented white flowers. This is the Yam of commerce ....	.15	1.50	8.00

**ERYTHRINA (Coral Plant)**

**CRISTA-GALLI.** Interesting flowering plant for the garden, growing from 4 to 6 feet high and producing long spikes of large crimson pea-shaped flowers from late September until frost. The roots may be stored in the cellar the same as Dahlias. Strong roots. .... .75

**EUCHARIS (Bethlehem Lily)**

**GRANDIFLORA.** Recommended exclusively for indoors and requires to be well established for good production of flowers. Very fragrant white Narcissus-like flowers ..... 1.00 10.00

**EUCOMIS (Pineapple Lily)**

**PUNCTATA.** Half-hardy Cape bulb producing rosettes of long leaves and a strong scape or stock, bearing a raceme of whitish flowers in the Summer, which are crowned with a crest of leafy bracts similar in shape to the topknot on a pineapple. It is from this leafy crown that the name is suggested. In warm climates let the bulbs remain where planted in the open. Treat as a houseplant in the East ..... 1.50



Eucomis Punctata

**GALTONIA (Cape Hyacinth)**

**CANDICANS.** Native Cape bulb having large handsome white flowers. Stems 3 to 5 feet in height gracefully surmounted with from 20 to 30 bell-shaped flowers ..... .25 2.50

**GLORIOSA (Glory Lily)**

**SUPERBA.** A gorgeous Lily-like plant, climbing from 5 to 8 feet high, with orange-scarlet flowers. Should be grown in a greenhouse or conservatory. Early Spring or Fall delivery ..... 1.00 10.00  
**ROTSCHILDIANA.** Similar to the above, but with much larger flowers. Gorgeous red and yellow, turning all red with age ..... 2.00 20.00



Galtonia Candicans

**GLOXINIA**

One of our handsomest summer blooming tuberous-rooted plants. It makes a very fine pot plant, requiring about the same cultural directions as Begonia. One bulb to a 4-inch pot. The colors range through pink, scarlet, violet and white bordered. .... Each Doz.

**BRILLIANT.** Carmine-scarlet ..... .50 5.00  
**BRUNHILDE.** Giant flowered, pure white ..... .40 4.00  
**CORONA.** Indigo; magnificent ..... .45 4.50  
**CYCLOPS.** Brilliant carmine with broad white margin. Spotted throat ..... .35 3.50  
**EMPEROR FREDERICK.** Vivid scarlet with white band ..... .50 5.00  
**EMPEROR WILLIAM.** Deep violet with white margin ..... .45 4.50  
**MAUVE PRINCESS.** White with mauve margin ..... .40 4.00  
 Mixed Varieties, large bulbs ..... 3.00  
 Spotted Hybrids ..... .35 3.50

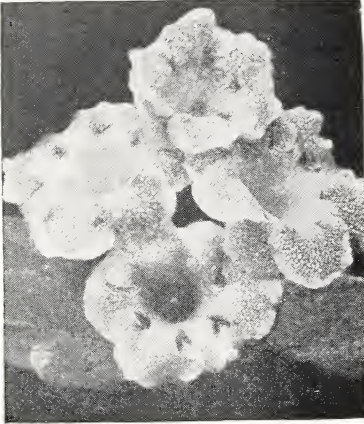
**HEDYCHIUM**

(GINGER LILY)

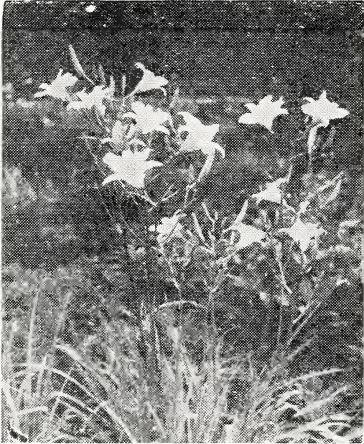
**CHRYSOLEUCUM.** Similar to Coronarium except flowers have a yellow blotch in center of the largest petal ..... .50 5.00  
**CORONARIUM.** Canna-like growth; waxy white flowers with a rich fragrance; fall blooming ..... .50 5.00  
**FLAVUM.** A very attractive variety bearing large clusters of delicate, creamy yellow flowers. Splendid for a contrast with the other sorts ..... .75 7.50  
**GARDNERIANUM.** Tall, with deep green foliage and yellow flowers ..... 1.50 15.00



Gloriosa Rothschildiana



Gloxinia



Hemerocallis



Hippeastrum—Diener's Hybrids

## HELICONIA

**BIHAL.** Purplish stems, yellow flower spikes. Each  
tender. Resembles a banana plant. .... 1.00

## HELLEBORUS (Christmas Rose)

Large pure white flowers from early fall until January. Bloom freely when well established. They are related to the peony. Require a semi-shaded location and rich loamy soil. Each Doz.  
**NIGER (Christmas Rose).** ..... 1.00 10.00  
**ORIENTALIS (Lenten Rose).** Mixed hybrids ..... 1.50 15.00

## HEMEROCALLIS (Day Lily)

Hemerocallis have long been favorites in our gardens and are always included in any list of the most popular hardy plants. All of the varieties of Hemerocallis are desirable and beautiful. The tall, graceful, grass-like foliage is very handsome and sets off the charming lily-like flowers very effectively. They look particularly well naturalized along streams or on moist banks, and will thrive most luxuriantly in shade.

Collection of six strong roots, each labeled, our selection, for ..... \$1.50

## HIPPEASTRUM

Under this heading properly belong a great majority of the plants commonly included under the name "Amaryllis," which has been used as a horticultural catch-all by most dealers, in the belief that lovers of plants might not recognize their favorites under their correct names. However, it is our belief that this practice has resulted in much confusion, and we have adopted the policy of offering all bulbs and plants listed in this catalog as nearly as possible under their correct botanical names, always giving references to the commonly used ones where it seems advisable.

The only true Amaryllis, strictly so-called, is Amaryllis Belladonna, native to South Africa, which has quite different requirements from the Hippeastrums, being more hardy, and requiring a season of absolute rest before flowering. Most of the Hippeastrums are practically evergreen, and require to be kept in a condition of active growth all the year around. This necessitates artificial heat in winter; or at least protection from temperatures lower than 45 degrees F., at which point growth will practically cease. In California and the extreme South, they may be grown in the open if given a southern exposure and perfect drainage, but the leaves are very impatient of frost, and the plants receive a severe setback as soon as cold weather approaches. Under these conditions, growth will resume about April, at which time the flower buds appear. However, this method is not recommended for any but frostless regions, pot culture being more satisfactory, and producing flowers over a greater period of time.

Any good potting soil will serve very well, a suitable one being composed of loam lightened with leaf-mold and sand, when the soil is inclined to be heavy. 6- or 8-inch pots may be used, setting the bulbs on the surface, with only the root-callus at the base covered. When bulbs are received in an artificially ripened state, lacking roots or leaves, the pots may be set in a dark place for about a month to induce the formation of roots before top growth starts. If green plants are received, they should be potted with great care, to avoid injury to the fleshy roots. Under these conditions, they will form additional new root fibers, and take hold immediately. Water should be sparingly given at all times, using just enough to keep the soil moist, but never soggy or sour. Heat is essential, as Hippeastrums are all natives of South and Central America, where tropical conditions prevail.

**DIENER'S EVERBLOOMING MAMMOTH HYBRIDS.** As the name implies, these are the result of a long period of hybridization and selection, with a view to securing flowers of great size at frequent intervals. Flowers a foot across are not uncommon, and the color range runs from white, faintly marked red or pink, through many shades and combinations of pink, vermilion and orange.

(Continued on next page)



Some will be fragrant. Flowers have fine lasting qualities, especially if anthers are removed as soon as they open.

	Each	Doz.
Mammoth bulbs .....	1.25	12.00
Large bulbs .....	.75	8.00
Medium bulbs .....	.50	5.00

**ADVENUM var. MINIATUM.** This belongs to a group characterized by narrow foliage, more slender growth than the typical species, and by a tendency to be deciduous, and take a brief period of rest before blooming. Resembles Sprekelia in its habits. Flowers funnel-shaped, three or four in an umbel on a stem about ten inches tall. Color, deep blood-red, with green throat. Very distinct and interesting, and is much hardier than the others, thriving in the open in California. Bulbs may be fully covered with soil. Will not endure winter temperatures below 20 degrees F. Each, .75; Dozen, 7.50.

**EQUESTRE.** A very beautiful orange-scarlet species, sometimes called "Barbados Lily." In Florida, where tulips do not do well, this is freely used as a substitute, giving brilliant color effects. Each, .35; Dozen, 3.50.

**EQUESTRE var. FLORE PLENO.** A very fine variety of Equestre with large double flowers, borne on long stems. They are excellent keepers as cut flowers, being fully equal to Darwin or Breeder tulips for ornamental value in the house. These deserve to be much better known. Each, 1.00; Dozen, 10.00.

**JOHNSONI.** An old-fashioned flower, known to our grandfathers, and still one of the very best. Fine, large, deep, scarlet flowers, with a white stripe through the center of each perianth segment. Each, .50; Dozen, 5.00.

Following is a list of plants of the Amaryllis family that are frequently offered in catalogs under the name "Amaryllis": Chlidanthus fragrans, Crinum of various species, Lycoris squamigera (as Amaryllis Halli), Sprekelia formosissima, Sternbergia lutea, Vallota purpurea. We offer all of these under their correct names, either in the Spring or Fall catalogs.



Hippeastrum Equestre Flore Pleno



Hippeastrum Advenum



Hymenocallis Calathina

## HOSTA

### FUNKIA (Plantain Lily)

The Plantain Lilies are among the easiest plants to manage; their broad massive foliage makes them attractive subjects for the border even when not in flower. They succeed equally well in sun or shade.

<b>COERULEA.</b> Lovely blue flowers 1 1-4 to 3 ft. high .....	.40	4.00
<b>FORTUNEI.</b> Pale lilac; blue green foliage .....	.35	3.50
<b>LANCEOLATA.</b> Valuable by reason of its late flowering, lilac flowers in September; 2 feet .....	.35	3.50
<b>VARIEGATA.</b> Fine blue flowers. Ovate leaves with margins deep green and creamy white center. One of the finest .....	.40	4.00

## HYMENOCALLIS (Spider Lily)

Each Doz.

**GALVESTONENSIS.** White flowers, bright green foliage, which dies down in the late fall. The bulbs should be dug in the fall and planted in the spring .....

### ISMENE GROUP (Peruvian Daffodil)

<b>CALATHINA.</b> A grand summer flowering bulb, producing with great freedom large amaryllis-like pure white, fragrant blossoms .....	.25	2.50
<b>SULPHUR QUEEN.</b> Lovely hybrid form of the above. Pale yellow flowers. Very rare .....	2.00	

## HYPOXIS (Star Lily)

**HIRSUTA** (Sometimes known as Erecta). A pretty little bulbous plant of the Amaryllis family, native to the Eastern and Central states. Grows 6 to 10 inches tall, with slender, grassy foliage covered with fine hairs. Flowers star-shaped, yellow, in umbels. Thrives in a moist, semishady location. Each, .15; Dozen, 1.50.

## ISMENE

(See Hymenocallis)



Iris—Alcazar



Iris—Crimson King



Iris—Isolene

## IRIS

Very few flower lovers realize the wonderful variety of forms and colors that may be found under this heading. The genus *Iris* contains several hundred species, found in all parts of the world, with the possible exception of South America and Australasia, where it is represented by *Moraea*, *Libertia*, and other *Iris*-like genera. A great many rare sorts are listed here, as well as the very best of the more familiar ones, such as the *Pogoniris* or *Germanica* group, which will be found first in the list hereunder.

### POGONIRIS (*Germanica*) GROUP

Those who are familiar only with the old-fashioned "flags" sometimes called Bearded *Iris* or *Iris Germanica*, have a real treat in store for them in the newer hybrids and improved forms. Many of these are enormous, with flowers eight or ten inches across, rivaling the finest orchids in beauty of tints, which range through blue, purple, lavender, pink, maroon, yellow, buff, white, and every conceivable combination of these colors. Most of them are very fragrant, and all are fine as cut flowers. Do well in any soil, with full sun. Need no summer watering, preferring a season of drought between blooming periods. When blooming, and while leaf growth is in progress, water is needed.

	Each
<b>ALCAZAR.</b> S. bluish violet; F. rich purple with bronze veined throat. ....	.20
<b>AFTERGLOW.</b> Buff gray to rich yellow .....	.25
<b>AMBASSADEUR.</b> S. smoked bronze; F. purple .....	.25
<b>ARCHEVEQUE.</b> S. deep violet-purple; F. purple .....	.35
<b>BALBOA.</b> Rich reddish lilac bicolor .....	.35
<b>BLACK PRINCE.</b> S. lavender violet; F. dark velvet purple. Orange beard. A fine late flower. 24 in. ....	.25
<b>CATERINA.</b> A tall, branched, light violet self. A fine vigorous flower .....	.25
<b>CHELLES.</b> S. yellow; F. striped bronze .....	.25
<b>CHERUBIN.</b> S. pale mauve; F. pinkish lilac .....	.25
<b>CLARENCE WEDGE.</b> S. heliotrope, tinged yellow; F. purple red. Orange beard .....	.35
<b>CLUNY.</b> S. pale lilac; F. slightly deeper. Tall and vigorous .....	.25
<b>COTTAGE MAID.</b> S. silvery blue; F. white tipped violet .....	.20
<b>CRIMSON KING.</b> Deep rosy crimson .....	.35
<b>CRUSADER.</b> Clear blue violet .....	.35
<b>DARIUS.</b> S. rich canary yellow; F. lilac, margined white. Very choice. 24 inches .....	.25
<b>DEJAZET.</b> S. bronze rose; F. reddish violet .....	.25
<b>DR. BERNICE.</b> S. coppery-bronze; F. velvety crimson Beautiful large flowers .....	.35
<b>DON QUIXOTE.</b> Lavender, overlaid yellow .....	.20
<b>DORA LANGDON.</b> S. honey yellow; F. pale rose; early .....	.35
<b>EDITH COOK.</b> S. yellow; F. striped bronze .....	.25
<b>EDWARD MICHELL.</b> Large red purple, ruffled .....	.25
<b>ELDORADO.</b> A very distinct and striking blend of bronze, heliotrope and violet purple. Low growing and very floriferous .....	.25
<b>FAIRY.</b> White, delicately shaded soft blue .....	.20
<b>FRO.</b> S. mustard yellow; F. oxblood red .....	.30
<b>GYPSY QUEEN.</b> S. old gold, shaded smoked pearl; F. black maroon, veined light yellow. Late flowering .....	.25
<b>HER MAJESTY.</b> S. lovely rose pink; F. bright crimson tinted darker. A most beautiful variety .....	.25
<b>HIAWATHA.</b> S. pale rosy lavender; F. purple .....	.25
<b>HONORABILIS.</b> S. golden yellow; F. rich mahogany brown .....	.20
<b>IRIS KING.</b> S. coppery yellow; F. garnet, edged yellow .....	.25
<b>ISOLENE.</b> S. silvery lilac flushed yellow; F. purplish old rose. Large striking-flower of unusual coloring....	.25
<b>JACQUESIANA.</b> S. bright coppery crimson; F. rich maroon. Very handsome. ....	.25
<b>JEANNE d'ARC.</b> A very dainty white long blooming plicata with light lavender frilled edges. 30 in .....	.20
<b>JUNIATA.</b> Clear blue .....	.25
<b>LENT A. WILLIAMSON.</b> S. lavender violet; F. velvety pansy violet, large flowers .....	.25

(Continued on next page)

	Each
LORD GREY. S. cloudy rose fawn; F. red .....	.25
LORELEY. S. light yellow; F. ultramarine bordered with cream. One of the most popular types .....	.20
MADAME CHEREAU. White, edge of petals blue. Frilled .....	.35
MADAME CHOBOUT. Apricot yellow, veined brown .....	.35
MAUVINE. Pink mauve of uniform shade .....	.25
MIDWEST. Red purple, ruffled edge .....	.35
MITHRAS. S. yellow; F. violet carmine .....	.25
NAVAJO. S. honey yellow; F. deep maroon .....	.20
MONSIGNOR. S. violet; F. crimson purple .....	.25
MONTEZUMA. S. deep golden yellow, dotted brown; F. yellow and white, dotted brown. Unique coloring. 18 inches .....	.25
MOTHER OF PEARL (Sturt.) A very popular Iris which is well named. Miss Sturtevant not only knows how to breed fine irises but how to name them. 4 ft. .....	.35
MRS. ALAN GRAY. Mauve and violet .....	.25
MRS. NEUBRONNER. A small flower of deepest golden yellow. Orange beard .....	.20
NIBELUNGEN. S. fawn; F. violet purple with fawn margin .....	.25
NUEE D'ORAGEE. S. dove color; F. bronze purple. Very large .....	.20
OPERA. S. coppery brown shot with purple; F. wine red penciled with gold .....	.35
ORIFLAMME. S. dark lavender; F. violet. Large, well branched stalk. ....	.25
OSION. S. canary yellow; F. light claret-red. Very showy .....	.25
PAR DE NEULLY. Deep violet blue, yellow beard, large flower, vigorous grower .....	.25
PARISIANA. S. netted and dotted lilac purple on cream white; F. cream white edged with lilac purple. Large flower .....	.25
PERFECTION. S. light lavender violet; F. dark velvety violet and black. Orange beard .....	.25
PLUMERI. S. coppery rose; F. velvety claret .....	.25
PRINCESS BEATRICE. S. lavender; F. lavender flushed mauve .....	.35
PRINCESS VICTORIA LOUISE. S. pale yellow; F. rich violet edged cream .....	.25
PROSPER LAUGEIR. S. light bronze with pink flush; F. velvety crimson yellow center .....	.25
PROSPERO. Large violet bicolor .....	.25
QUAKER LADY. Smoky lavender yellow .....	.20
QUEEN ALEXANDRA. S. fawn shot with lilac; F. lilac .....	.25
QUEEN CATERINA. Pale violet .....	.25
QUEEN OF MAY. S. soft lilac-rose; F. purplish lilac .....	.25
RHEIN NIXE. S. white; F. deep violet-blue with white edge .....	.25
RICARDI FONCE. S. light violet; F. deeper .....	.35
RUBELLA. Lilac and purple .....	.20
SANTA BARBARA. Large bright blue self .....	.50
SAPPHO. Lilac blue .....	.20
SHASTA (Mohr-Mitchell 1927). Magnificent white .....	2.00
SHERWIN-WRIGHT. Small bright golden yellow of good form. Vigorous growth .....	.20
SINDJKHA. Deep lavender and buff .....	.35
SOLEDAD. S. pale yellow; F. amber yellow .....	.35
SOUV DE MME. GAUDICHAU. Rich purple .....	.35
TAMERLANE. Pale violet and deep purple .....	.20
THUNDER CLOUD. Deep grayish lavender .....	.25
VICTORINE. S. white mottled dark blue; F. dark violet blue .....	.25
VIRGINIA MOORE. A bright yellow self of large size; falls slightly veined. Height 30 in. ....	.25
WYOMISSING. S. creamy white; F. deep rose at the base, shading to a flesh colored border .....	.35



Iris—Princess Beatrice



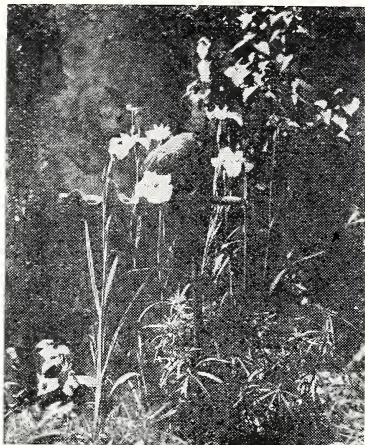
Iris Spuria Aurea



Iris—Alice Eastwood

Collection of one each of eight bearded Iris, our selection, all good varieties .....1.50

(Continued on next page)



Iris Kaempferi



Iris Chrysographes



Iris Fimbriata

### WILD POGONIRIS TYPES

These wild forms of bearded iris should be useful for hybridizing work, or interesting to those concerned in making a collection of Iris types and species.

	Each
ALBICANS. Lovely white flowering iris. Very early and blooms for a long time .....	.25
AMAS. Very large, broad-petaled type from Asia Minor .....	.35
BILJOTTI. Low growing, dark blue iris from Asia Minor .....	1.25
CENGIALTI. Small, lavender Iris from Northern Italy .....	.75
COMO. Lovely pallida from Northern Italy .....	2.00
FLORENTINA ALBA. White with gray tone. Blooms in midseason .....	.25
ISTRIA. Beautiful white species with green tinge. Collected in Italy, near Fiume .....	5.00
NEPALENSIS. A blackish-purple form of Kochii .....	.35
PALLIDA DALMATICA. Similar to above, but larger .....	.35
SYRACUSE. Fine large-flowered form of albicans collected from Sicily .....	7.50
TROJANA. Fine strain of imported stock .....	.50
TROJANA SUPERBA. Tall form of Trojana .....	.75
VARIEGATA. Strong growing wild form of the true species .....	1.00
VIOLACEA GRANDIFLORA. S. rich blue; F. violet blue .....	.25

### INTERMEDIATE HYBRIDS

These hybrids are a cross between the tall bearded Iris Germanica and the dwarf Iris pumila. As a result they are of medium height (12 to 24 inches) and flower after the early dwarfs and before the tall bearded, thus filling in the gap between these two types. They are free flowering, vigorous growers and very hardy.

	Each	Doz.
BLUE BOY. S. bright clear blue; F. dark blue .....	.30	3.00
DOROTHEA. S. pearl gray; F. light blue .....	.35	3.50
FRITJOF. S. lavender; F. purple shaded lavender .....	.30	3.00
GERDA. S. creamy yellow; F. deeper with golden veins. Very beautiful .....	.35	3.50
HALFDAN. Lovely creamy white flower with golden veined throat and yellow beard. Fragrant .....	.30	3.00
HELGE. Citron-yellow with pearl-colored center .....	.35	3.50
INGEBORG. Large pure white with golden veined throat .....	.30	3.00
WALHALLA. Fine large flower with light blue standards and rich violet-purple falls .....	.30	3.00
QUEEN FLAVIA. Primrose yellow .....	.25	2.50
ZUA. Unique flower of uniform soft gray; curiously crinkled petals. Fragrant .....	.50	5.00
ZWANENBURG. A Pogonocyclus hybrid, but included in this section on account of the similarity to the other "intermediates." S. cream colored blotched pale violet; F. light yellow, splashed olive-brown .....	.50	5.00

Collection of one each of the ten fine hybrid Iris listed above, all separately labeled, \$3.00. Collection of any five, our choice, \$1.75.

Collection of one each of 6 varieties, our choice, for \$1.25

### IRIS PUMILA

(DWARF BEARDED IRIS)

A miniature race of Iris similar in form to the tall bearded type. These lovely little gems are early bloomers, appearing soon after the Ungicularis or winter-blooming iris have gone. Especially good for the rockery. Every iris lover should have a few at least.

	Each	Doz.
ATROVIOLACEA. Rich velvety red purple .....	.25	2.50
BRIDE. Early white, fragrant .....	.25	2.50
BRIDESMAID. Creamy white with bronze markings .....	.35	3.50
CANARY BIRD. Straw yellow, orange beard .....	.35	3.50
CYANEA. rich deep blue .....	.25	2.50
DITON-PURPLE. Clear violet-purple .....	.30	3.00
EXCELSA. Lemon yellow with orange beard .....	.50	5.00
FORMOSA. Dark blue .....	.35	3.50
LA FIANCEE. White .....	.30	3.00
PRAIRIE GEM. Yellow .....	.35	3.50
ROYAL PURPLE. Rich purple .....	.35	3.50

(Continued on next page)

**CRESTED DWARF IRIS**

	Each	Doz.
<b>CRISTATA.</b> Tiny wild species from North Carolina. Clear lavender with gold tinge. Will grow in any location, but prefers some shade and a good covering of leaf mold .....	.35	3.50
<b>CRISTATA ALBA.</b> A lovely white form of the above. Very scarce .....	2.50	
<b>GRACILIPES.</b> Dainty little Japanese crested iris. Pale lavender flowers, touched with orange. Likes part shade with a well drained soil mixed with leaf mold and plenty of moisture .....	2.00	
<b>WATTI.</b> Very rare and unique Iris from the Himalayas. Similar in growth to a dwarf bamboo. Flowers white or lightly tinged. Hardy in Southern California but should be protected well in cold frames during winter in other states .....	3.50	

**IRIS SPURIA**

This group contains a greater variety of shades than found in most other species of beardless iris, ranging from almost white, and cream to deep rich yellow and from pale lavender to blue-purple. They grow from 2 to 5 feet tall and are desirable to plant along streams or around pools or ponds. They are exquisite cut flowers and when cut keep well.

	Each
<b>AUREA.</b> Tall, deep yellow, one of the finest .....	.75
<b>A. J. BALFOUR.</b> Fine, tall blue hybrid of Monspur. Very scarce. ....	1.50
<b>DOROTHY FOSTER.</b> Beautiful violet standards with fall striped lighter. Medium height .....	2.50
<b>JUNO.</b> Lovely blue-purple flower of the Monspur type. Quite hardy .....	1.00
<b>LORD WOLSELEY.</b> Large, handsome flower similar to Juno but not quite as tall .....	.75
<b>MONNIERI.</b> Rich, golden yellow, similar to Aurea, but quite hardy. Prefers moist situation .....	.50
<b>MONSPUR.</b> Tall, blue-purple. A cross between "Monnieri" and "Spuria" types .....	.25
<b>MRS. A. W. TAIT.</b> Handsome, soft porcelain blue .....	.25
<b>NOTHA.</b> Fine, pale lavender .....	.25
<b>OCHRAUREA.</b> Elegant flower, in two shades of yellow. A cross between "Ochroleuca" and "Aurea" ....	1.00
<b>OCHROLEUCA.</b> Flowers white and gold. Very tall .....	.25
<b>OCHROLEUCA SULPHUREA.</b> Yellower than above ....	.75
<b>SPURIA.</b> Lavender-blue .....	.75

Collection of ten of these stately Iris, full range of colors including deep cream, white and yellow, golden yellow, pale lavender to blue-purple. All different and labeled separately. Our selection, \$4.50. Five, all different, our selection, \$1.50

**BRANIN HYBRIDS**

I am pleased to be able to offer for the first time the following collection of Spuria Hybrids originated by Mrs. Jenima Branin, one of our most ardent Iris lovers. Mrs. Branin has been working for a number of years with these beautiful "Butterfly Iris," until she has now produced quite a number of new varieties, with larger flowers and loveliest shades yet introduced.

	Each
<b>ALICE EASTWOOD.</b> Magnificent ochroleuca hybrid. Beautiful shade of rich yellow .....	10.00
<b>GOLDEN GATE.</b> Tall bold flower of golden yellow ....	12.50
<b>MARY NULTY.</b> Lovely pure white flower, very tall ....	12.50
<b>NELLIE STUART.</b> Beautiful tall flower. Fine shade of blue .....	12.50

(Continued on next page)



Iris Foetidissima



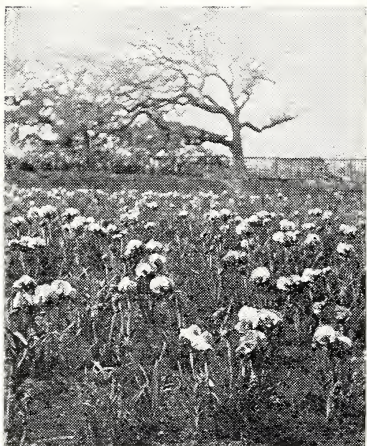
Iris Unguicularis



Iris Fulva



Iris Susiana



Iris Susiana—In Field



Iris Hoogiana

## IRIS KAEMPFERI (Japanese Iris)

(Synonym: *Iris laevigata*)

As these magnificent Iris become better known they gain in popularity and a field of them in bloom or a few specimens artistically arranged in the water garden is truly a lovely sight. These Iris are the last to bloom. Coming into flower the first part of June and continuing for two to three weeks, they fill in a period when flowers of this attractive type are particularly welcome. They have proved hardy in a number of states, but should be covered with straw in the Northern and Eastern states to prevent danger from freezing and thawing.

### Recent Introductions

	Each	Doz.
TARTAR PRINCE. Rosy-crimson, white veins, blue halo .....	.60	6.00
CHUTSAI. Hortense violet, veined white, inner petals phlox purple .....	.60	6.00
ISPAHAN. Phlox purple veined white .....	.70	7.00
KHA KHAN. White suffused blue, purple stigmas .....	.55	5.50
MONGOL KHAN. Deep rosy-red, extra large .....	.75	7.50
REFSIME. Blue veined white .....	.65	6.50
SADARABAD. White overcast with pale phlox pink .....	.75	7.50
TEMPLE FLOWER. Ivory white, heavily blended with soft bluish-violet. Veined white .....	.70	7.00

### Standard Varieties

APOLLO. Single. Pure white, pink center .....	.30	3.00
AZURE. Double. Immense flower, exquisitely wavy. Mauve-blue with darker halo around the yellow blotch at base of petals .....	.35	3.50
BLUE JAY. Double. Sky blue, distinct white lines on each petal .....	.40	4.00
CATHERINE PARRY. Double. Blue, overlaid rosy-red; high tufts in center, almost triple .....	.35	3.50
CLARICE CHILDS. Single. Petunia-violet; conspicuous yellow center surrounded with blue cast. Large .....	.50	5.00
DORRIS CHILDS. Double. Pearl-white, deeply veined rosy plum. Center petals deep plum edged white .....	.50	5.00
ELEANOR PARRY. Double. Claret-red, flamed white and blue. Compact, medium sized flower .....	.40	4.00
FASCINATION. Double. Blue, lightly veined white, pink tinge. Beautiful variety .....	.40	4.00
GOLD BOUND. A fine double, pure white; creamy glow at the gold-banded center .....	.35	3.50
GRANITE. Single. Purple, spotted and flaked white. Lilac center .....	.30	3.00
INDO. Single. Broad, wavy petals of great size; color dark rich blue, slightly veined. Yellow blotch is unusually bright .....	.35	3.50
LA FAVORITE. Large, fine; white freely veined blue, and a rich purple center .....	.40	4.00
MARS. Single. Reddish purple, striped and blotched white .....	.30	3.00
MT. HOOD. Double. Light blue, shaded darker. Bright orange center .....	.35	3.50
PYRAMID. Double. Violet-purple veined white in center of each petal .....	.35	3.50
RED RIDING HOOD. Single. Amaranth veined and suffused white .....	.30	3.00
ROSE ANNA. Double. Ivory white, heavy ruby-red veins, conspicuous yellow blotch, stigmas dark plum .....	.40	4.00
SHADOW. Single. Self color, reddish purple. Very large and fine blossoms .....	.35	3.50
TEMPLETON. Double. Light violet mottled reddish pink and white; of exceedingly fine form .....	.75	7.50
T. S. WARE. Double. Reddish violet flowers of large size, beautifully veined white, center white with lemon-yellow marking .....	.35	3.50
Mixed colors, both single and double varieties. Splendid assortment .....	2.50	

Collection of ten of these beautiful Japanese Iris, each labeled, our selection from the above list, for \$3.00. Five, all different, our selection, for \$1.75.

(Continued on next page)

MISCELLANEOUS ASIAN SPECIES

	Each
<b>CHRYSOGRAPHES.</b> Chinese species introduced by E. H. Wilson. The color is rich purple with gold lines on petals and gold dots in throat. Very rare .....	1.00
<b>DELAVAYI.</b> Interesting tall blue species from Western China. Scarce .....	1.00
<b>EPAULETTE.</b> A hybrid of two distinct Chinese species, Bulleyana and Chrysographes. Supply limited .....	2.50
<b>FIMBRIATA (Japonica).</b> Native to Central China. The flower stems, which usually appear in February, are much branched and the individual flowers are so numerous that the display continues for some weeks .....	.50
<b>FORRESTI.</b> Clear yellow flowers about 15 inches tall. Discovered by George Forrest in N. W. Yunnan .....	1.00
<b>FOETIDISSIMA, or GLADWYN,</b> has fine evergreen foliage. The flowers are not pretty but in the late fall the seedpods open out to show rows of scarlet seeds of much beauty. They are much prized as winter decorations .....	.25
<b>MILESI.</b> Flowers reddish purple with darker mottlings. The branching stems grow from 2 to 3 feet in height .....	5.00
<b>TECTORUM.</b> The well known Roof Iris; flat blue-purple flowers with a conspicuously fringed white crest .....	.50
<b>TECTORUM ALBA.</b> The exquisite white form of the preceding .....	2.00



Iris Stolonifera



Iris—Aspasia

IRIS UNGUICULARIS

(IRIS STYLOSA) WINTER BLOOMING

The plants start blooming in the fall and bloom throughout the winter. They grow wild in Algeria, Greece, and Asia Minor. The foliage is grass-like and the flowers are borne on stem-like parts, really elongated perianth tubes, 8 to 16 inches long. The flower is one of great refinement and is delightful in the house. Plant preferably from June to December.

	Each
<b>STYLOSA.</b> Lilac blue with grassy evergreen foliage .....	.25
<b>STYLOSA MARGINATA.</b> A form of bluer hue and somewhat broader foliage than above. Makes a very rank growth .....	.25
<b>STYLOSA ALBA.</b> A white form. Dozen \$2.50 .....	2.50
<b>STYLOSA SPECIOSA.</b> A violet form, narrower foliage and somewhat smaller flower and shorter perianth tube .....	.75
<b>QUEEN ELIZABETH.</b> A dwarf form, violet and white. Very floriferous .....	1.00

PACIFIC COAST SPECIES

	Each	Doz.
<b>BRACTEATA.</b> Dwarf, golden yellow .....	.25	2.50
<b>CHRYSOPHYLLA.</b> Slender, light yellow flowers .....	.30	3.00
<b>DOUGLASIANA.</b> Flowers blue and cream. Mixed only .....	.25	2.50
<b>GORMANI</b> Dwarf, narrow leaves and lovely soft yellow flowers .....	.75	7.50
<b>HARTWEGI.</b> Yellow, very dwarf .....	.25	2.50
<b>HARTWEGI.</b> Blue shades .....	.25	2.50
<b>LONGIPETALA.</b> Light blue, similar in growth to Japanese Iris. Makes a dense group with erect foliage and tall, stiff stems. Prefers moist situation .....	.35	3.50
<b>MACROSIPHON.</b> Blue-purple flowers with white stripe. Fragrant .....	.50	5.00
<b>PURDYI.</b> Low growing with beautiful cream colored flowers, lined purple. Lovely in groups.....	.40	4.00
<b>TENAX.</b> Tiny, reddish purple flowers. Likes moist soil .....	.25	2.50
<b>TENUIS.</b> Wide leaved woodland iris. White flowers, with purple and gold markings. Give light soil mixed with leaf mold .....	.50	5.00



Iris—Charon

Collection of ten of these lovely woodland Iris, all different and labeled separately, but our selection, \$2.00. Five, all different, our selection, \$1.00.

(Continued on next page)

## AMERICAN SPECIES AND VARIETIES



Iris—Turkoman



Iris—Theresa Schwartz



Iris—English

	Each
CACIQUE (Berry). Beautiful fulva hybrid, prune-purple shade .....	2.00
DOROTHY K. WILLIAMSON. Hybrid of fulva and foliosa. Velvety purple .....	.50
FOLIOSA. Lovely species from the South, but hardy in most states. Bright blue flowers among heavy foliage. Fine for rock garden .....	.50
FULVA. Copper colored iris, native to the Southern States. Requires part shade in moist location .....	.75
FULVALA. Cross between Iris Fulva with Lamanca. Similar to Fulva, but more coppery .....	3.00
HEXAGONA. A fine species, bearing bright lilac flowers marked with yellow on a tall stem .....	.50
MISSOURIENSIS. Pale violet with delicate markings. Native to the Rocky Mountain region. Requires moisture in growing season .....	.40
PRISMATICA. (Cubeseed Iris) Flowers about 18 in. tall, pale lavender shade.....	.35
PSEUDACORUS. A water loving species with bright yellow flowers on long stem. Fine for water gardens. Asian species, naturalized in the Eastern states .....	.30
PSEUDACORUS GIGANTEA. Similar to the preceding, but larger .....	.75
PURPUREA. Natural hybrid of Hexagona and Fulva. Handsome, rich purple .....	1.25
SAGAMORE (Berry). A fine tall Fulva hybrid, on the order of Cacique, but larger and redder.....	15.00
SAMBUCINA. Rosy-copper, with orange tinge. Named on account of its odor, which resembles that of Elder (Sambucus) .....	1.00
SAVANNARUM. Tall blue native from the Florida swamps. Hardy in Southern California and other mild climates .....	1.00
VERSICOLOR. Violet blue Iris found along watersides in some of the Southern states. Will grow in any good garden soil, but especially fine for water garden. Per dozen, \$3.50 .....	.35
VIRGINICA. The wild swamp Iris of Indiana. Sub-species of I. Versicolor and similar in appearance .....	.75

The following list of Iris are Spring bloomers, and are delivered in the Summer and Fall. They are included here to make the Iris series complete in one book, as there are many tie-ins between the various hybrids.

## PALESTINE HYBRID IRIS

(ONCOCYCLUS AND REGELIA GROUP)

FOR SUMMER AND EARLY FALL DELIVERY

This group contains the most curious, yet beautiful of all Iris. Their flowers are strikingly veined on white, soft violet-purple or brown ground. To grow this type of Iris successfully where winters are severe or summers subjected to occasional rains, it is necessary to dig the roots each season after the leaves have died down (about the end of June) wash, and dry off for a day or two and then store in a box of very dry sand until time to replant. Tobacco dust added to the sand is used as a protection against aphids.

The planting should be done a few weeks before the ground freezes, three or four inches deep and then covered with a mulch of straw or dried leaves, to prevent heaving. A light frost will not injure the roots, but will kill the new growth. Therefore, the roots should be kept bone dry after planting, inasmuch as growth starts very readily upon the addition of moisture, if the temperature is mild.

### Oncocyclus Type

	Each
SUSIANA (Mourning Iris). Enormous flowers of grayish white veined black-maroon .....	2.00

### Regelia Types

HOOGIANA. Soft uniform blue .....	1.00
KOROLKOWI. Native of Turkestan. Silver-gray, veined blackish purple. Very odd .....	2.00

(Continued on next page)



	Each
STOLONIFERA. Beautiful bronze and steel blue .....	1.50
FLECTA. Pale lavender standards with light purple falls .....	1.50
FRIGA. A wonderful, large hybrid. Standards violet, lined purple; falls rich purple lined white .....	2.00
HEBE. Violet-blue veined on pale ground, falls pearly-gray violet veined .....	1.50
VAGA. Purple, blue and bronze .....	2.00

### Regelio-Cyclus Hybrids

ASPASIA. Reddish lavender, veined darker .....	1.50
BEATRIX. Pale violet, dark veined, falls soft pearly-gray with dark violet veins .....	2.00
CHARON. Bronze, veined gold and brown .....	1.50
HECATE. Lilac-rose, falls on creamy ground brown feathered .....	1.50
HERA. Beautiful flower shot with ruby, bronze and blue .....	1.50
IRENE. Flushed with pale lavender and veined with lavender-purple. Falls, silvery gray, prominently veined with dark lavender-purple .....	1.50
ORESTES. Self-colored dark bronze with purple hue .....	2.50
OSIRIS. S. Cream heavily flushed lilac purple; F. veined rich purple over white brown .....	1.50
PSYCHE. White veined violet. Brown blotch in throat .....	2.00
SATURNUS. Pale lilac-violet, falls gray, violet veined .....	1.50
TURKOMAN. S. Warm reddish-brown shot with violet; F. Ruby-purple with vivid royal blue beard. A very desirable variety .....	1.50

### Pogono-Cyclus Hybrids

The following group of Iris are the result of crosses between various Oncocyclus and Regelia types with the tall Iris Germanica. They are quite interesting and with care are not difficult to grow. A sunny situation is necessary.

	Each
CARMELO (Mohr). A Korolkowi x Germanica seedling of medium size and blue-violet shade .....	.50
CONGRES. Deep reddish bicolor .....	10.00
DORAK (Foster). Gigantic flower with light violet standards and falls darker violet, beautifully veined .....	1.50
GIRAN (Foster). Beautiful wine colored flower with handsome veining .....	2.50
HAMADAN (Foster). A uniform shade of rich violet, with white throat overlaid with purple veins and with a black beard .....	1.00
IBPALL (Foster). A hybrid of Iberica x Pallida. Deep red-violet, veined purple .....	.50
NAZARINE (Foster). A seedling of Pallida x Iberica. A beautiful purplish-violet hybrid .....	.50
NEFERT. Soft blue without markings .....	1.00
PARVAR. Dark variety with black violet standards and falls, with a velvety sheen. .....	2.50
SHIRAZ. Standards are soft uniform bright violet shade. Falls are a deeper shade .....	2.50
WILLIAM MOHR. Soft velvet, beautifully veined bright manganese violet .....	2.50
ZWANENBURG. S. Cream colored, blotched pale violet. Falls, light yellow, splashed olive-brown .....	.50



Iris Bucharica



Iris Reticulata



Lilium Auratum

### BULBOUS IRIS--HOLLAND TYPE

One of the most satisfactory groups to grow, being particularly hardy in most states, but should be well covered during the winter, with straw or leaves, in the East.

The orchid-like flowers are of great beauty, having many different shades and blendings of color, and if cut in the bud will keep for a long time in water. For best effect they should be planted in clumps of 25 or more bulbs or are very satisfactory placed in a long row in the hardy border. Plant in September, six inches apart and two to three inches deep. They bloom soon after the daffodil season.

	Doz.	100
ADRIAN DACKER. Early rosy lavender, extra large .....	2.00	12.00
ALBERT CUYP. White, pale lemon falls .....	1.50	7.50
ANTON MAUVE. Lovely uniform shade of soft blue .....	1.50	7.50

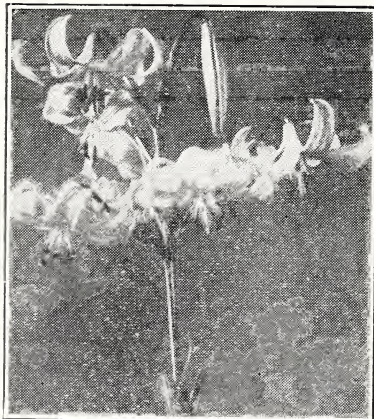
(Continued on next page)



*Lilium Batemanniae*



*Lilium Henryi*



*Lilium Martagon*

	Doz.	100
DAVID BLESS. Early, light blue; very large	2.00	12.00
DAVID HARING. Tall, large white, golden center. Fine flower	2.00	12.00
FRANS HALS. Creamy white and pearl blue	1.00	6.00
HART NIBBRIG. Clear, deep blue	1.25	6.75
and finest yellow variety	3.00	20.00
HOBBEMA. Pale blue, yellow falls	1.50	7.50
THERESA SCHWARTZ. Light lilac and creamy white. Beautiful	2.00	12.00
WHITE EXCELSIOR. Large pure white with yellow blotch	2.00	12.00
YELLOW QUEEN (New). Magnificent pure yellow. Tall, strong grower. The best of the very few yellow Iris yet introduced of the Holland type	2.50	15.00

Collection of 100 bulbs in five named varieties, in shades of light and dark blue, blue and yellow, white and yellow, white and lilac and pure yellow. 100 large bulbs for \$10.00. Fifty large bulbs for \$5.50.

### ENGLISH TYPE

	Doz.
FRANS HALS. Porcelain blue on white	1.75
GRAND LILAS. White and lavender	1.50
JOHN DUCKER. White flushed rosy purple	2.00
MONT BLANC. Pure white	1.75
PRINCE OF WALES. Rich deep blue	2.00
PRINCESS DAGMAR. Creamy-white, reddish mauve spots	1.75
ROSA BONHEUR. White, splashed dark carmine	1.50
PERLE des JARDINS. Pearl, flamed light blue	2.00

### BULBOUS IRIS—RARE SPECIES

- BUCHARICA.** Native of Bokhara, height 1 1-2 to 2 feet. Soft yellow flowers with deeper yellow on the lip of the falls. The foliage is unique, resembling a miniature corn stalk, with flowers at the top and at the axil of each leaf. Requires some protection. Each .....1.00
- HISTRIODES (Reticulata Type).** Bright blue with a yellow ridge in center. Each .....1.00
- HISTRIO (Reticulata Type).** Similar to above. Name means "actor" in Latin. Each .....1.00
- JUNCEA.** Native of North Africa. Fragrant yellow flowers similar to the Holland and English in form. Each .....1.00
- PAVONIA.** (Peacock Iris). SEE MORAEA.
- PERSICA.** A dwarf species of the Juno type from Asia Minor; the color is white, tinged sea-green; purple blotch on falls. Requires protected location with heavy mulch or to be grown in pots indoors. Each .....1.25
- RETICULATA.** A pretty little dwarf bulbous Iris. The name being Latin for "Little Net," which describes the appearance of the outside of the bulb. The flowers are blue, tall and something like a Spanish Iris in shape. These bulbs are very small. Each .....1.00
- SISYRINCHIUM.** Light blue, dainty flowers, that last only half a day, like a Tigridia. Each ..... .50
- VARTANI (Reticulata Type).** Pale lilac, darker veins. Almond scented and earliest to bloom. Each .....1.50



**IRISES,** by F. F. Rockwell. A handy guide which will bring you success with irises and show new uses and effects possible in your garden. Describes the dwarf, early, German, Japanese, Siberian, water, crested, Spanish, English, Dutch and other types; tells the best soil; what fertilizers to use; how to plant; and what care is necessary. Tells how to propagate stock for your own use. 54 illustrations, 80 pages. \$1.00.

Sent FREE as a premium with an order for \$10.00 worth of bulbs from this catalog at single or dozen rates, if asked for at the same time.

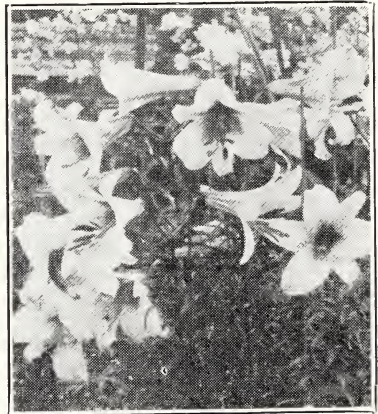
LILIUM (Lily)

Lilies are without doubt among the most beautiful of the summer flowers. They would be cultivated more generally but for the notion they are hard to grow. Some of the rarer species are, it is true; but unless one goes in for Lilies to the extent of making a hobby of them, these can all be left to the collector and there will be quite enough species remaining to keep the garden well supplied with beautiful blooms without special care.

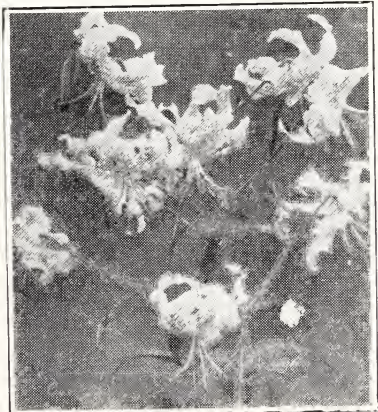
	Each	Doz.
AMABILE. Grenadine red; spotted black .....	.50	5.00
AURATUM (Gold-Banded Japan Lily). Undoubtedly one of the finest. Its large graceful fragrant flowers are a delicate ivory-white color, thickly studded with chocolate-crimson spots and striped through the center a golden yellow; 3 to 5 feet. July to September .....	.25	2.50
AURATUM PLATYPHYLLUM. Also called "Macranthum." This is a robust growing form; the stem is stouter and attains a greater height; the leaves are much broader; enormous flowers, white, richly spotted yellow .....	.35	3.50
Larger size .....	.50	5.00
BATEMANNIAE. Strong stems with 5 to 10 flowers of a reddish orange color. July-August. 3 to 4 feet .....	.40	4.00
BROWNI. A vigorous grower with large trumpet-shaped flowers of clear white, veined outside with purplish maroon .....	1.00	10.00
CERNUUM. A deep lilac-pink, spotted wine color. Very fragrant .....	.75	7.50
COLCHICUM (Szovitzianum). A beautiful lemon-yellow Lily, produced in pyramidal clusters. June. 4 to 5 feet .....	1.25	12.50
CONCOLOR. Red Star Lily. Erect flower, deep scarlet. Dwarf. Suitable for rock-gardens. June, July .....	.35	3.50
CROCEUM. Orange Lily. Bright orange, erect flowers. June, July .....	.35	3.50
HANSONI. Most desirable; not particular in its cultural requirements and extremely handsome in flower; does well in light loam. 4 to 5 feet. Blossoms 2 inches across, bright orange, spotted with brown, wavy texture. Admirable for pot culture. June. ....	.75	7.50
HENRYI. A Himalayan Lily that has become very popular. It has the same form and appearance as the speciosum varieties, but the flowers are a bright orange-yellow. Easily grown and permanent. ....	.40	4.00
Extra large size .....	.75	7.50
KRAMERI. Unique for its color and grows from 2 to 4 feet high. The funnel-shaped, finely formed flowers are 6 inches or more in length and as much across, of a beautiful clear pink color, often shaded blush .....	.50	5.00
LEICHTLINI. An uncommon kind from Japan. Pale yellow, purple spots. Very graceful. August .....	.50	5.00
MARTAGON DALMATIUM (Turk's Cap Lily). A handsome Lily, bearing clusters of purple, wax-like flowers. Thrives best in partial shade. June. 5 feet. ....	.40	4.00
PHILIPPINENSE. White with reddish brown exterior. ....	1.25	12.00
POMPONICUM. A brilliant red Turk's Cap Lily, like Chalcedonicum, but with flowers more loosely arranged. June. 3 to 4 feet .....	1.50	15.00
PYRENAICUM (Yellow Turk's Cap Lily). Easy cultivation, many small yellow flowers, dotted brown. Reflexed petals. June. 3 feet. ....	.75	7.50
REGALE. Absolutely hardy, and excellent for forcing. It has been predicted that this will become the Easter Lily of the future, and being so hardy, may be grown outdoors. White, suffused with pink, with canary-yellow center. Delightful perfume, like Jasmine, and lacking the heavy, oppressive odor of most Lilies. Blooms out-of-doors early in July. Medium size. ....	.25	2.50
Strong bulbs, 5 to 6 inches in circumference ....	.30	3.00
Giant bulbs, 6 to 7 inches in circumference .....	.40	4.00



Lilium Philippinense



Lilium Regale



Lilium Speciosum Album

(Continued on next page)



Lilium Speciosum Magnificum

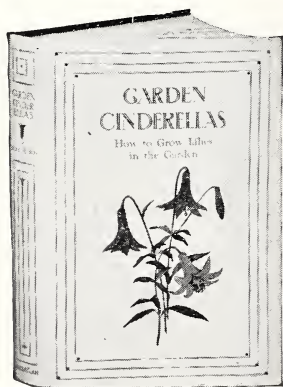


Lilium Tigrinum Flore Pleno

	Each	Doz.
<b>SPECIOSUM MAGNIFICUM.</b> Magnificent large flowers of rich carmine-crimson. Large size .....	.50	5.00
<b>SPECIOSUM ALBUM.</b> Large, white flowers of great substance, with a greenish band running through the center of each petal. Large size .....	.75	7.50
<b>SPECIOSUM RUBRUM.</b> White, suffused rose, pink, spotted crimson, green band through center of petals. Large size. ....	.50	5.00
<b>SARGENTIAE.</b> Milk white flowers with yellow throat .....	1.25	12.50
<b>SULPHUREUM.</b> Large flowers of pale yellow, outside streaked claret red .....	2.00	20.00
<b>TENUIFOLIUM.</b> Small, slender lily, bright scarlet flowers with recurved petals. One of the prettiest little lilies in cultivation. Early June. 12 to 18 inches. ....	.35	3.50
<b>THUNBERGIANUM (Elegans).</b> Hardy, dwarf Lilies with large, erect flowers of various shades of yellow, orange and red. 1-2 to 2 feet. June and July. Mixed colors. ....	.25	2.50
<b>TIGRINUM SIMPLEX (The well known Single Tiger Lily).</b> Of easy culture and worthy of general planting on account of stateliness .....	.25	2.50
<b>TIGRINUM FLORE PLENO (The Double Tiger Lily).</b> .....	.35	3.50
<b>UMBELLATUM erectum.</b> Splendid form; rich red .....	.35	3.50
<b>UMBELLATUM Grandiflorum.</b> Orange red; very fine .....	.35	3.50
<b>UMBELLATUM incomparabilis</b> .....	.25	2.50
<b>UMBELLATUM Sappho</b> .....	.25	2.50
<b>UMBELLATUM Mixed.</b> Yellow, orange and crimson shades .....	.35	3.50
<b>WILLMOTTIAE.</b> One of the finest, although little known. Graceful habit, slender foliage and vivid orange-red flowers. July-August. 2 to 4 feet .....	2.00	20.00

### EASTERN LILIAM SPECIES

<b>CANADENSE.</b> Beautiful, dainty native lily. Graceful and charming .....	.25	2.50
<b>CANADENSE flavum.</b> Yellow Canada lily .....	.30	3.00
<b>CANADENSE rubrum.</b> Red Canada lily .....	.30	3.00
<b>CAROLINIANUM.</b> A showy lily with slender stems, bearing orange red flowers, spotted maroon. Requires a well-drained situation. July-August. 2 to 3 feet .....	.50	5.00
<b>GRAYI.</b> A native lily with deep red flowers. One of the finest for planting in shady places. Small rich red flowers, spotted maroon. July. 3 to 4 feet .....	.25	2.50
<b>PHILADELPHICUM.</b> A handsome native lily with yellow, cup-shaped flowers, spotted maroon and shaded orange at ends of petals. Good for naturalizing. July. 3 feet. Large bulbs .....	.30	3.00
<b>SUPERBUM.</b> Flowers bright reddish orange, conspicuously spotted; easily grown and permanent. 3 to 4 feet. ....	.35	3.50



### ONE OF THE BEST BOOKS ON LILY CULTURE

**GARDEN CINDERELLAS (Lilies)**, by Helen M. Fox. Expert information on growing lilies by a gardener whose knowledge is proven by her own success. Tells the name of every lily in cultivation, its native home, season of blooming, propagation methods, and every other detail needed for success. Beautifully illustrated in color and half-tone. 51 illustrations, 269 pages. \$5.00

Sent FREE as a premium with an order for \$50.00 worth of bulbs from this catalog at single or dozen rates, if asked for at the same time.



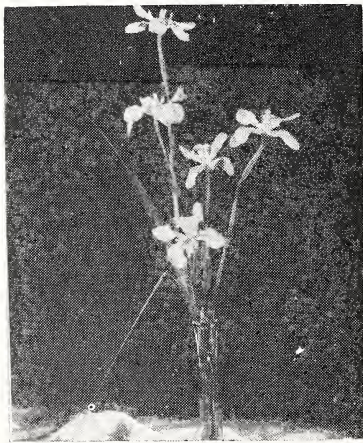
*Lilium speciosum rubrum*



Mertensia Virginica



Montbretia Hybrid



Moraea Bicolor

## LIRIOPE

**GRAMINFOLIA.** Low-growing lilies with tufts of dark green foliage. In the summer, the lilac, grape-hyacinth-like flowers are borne in spikes above the leaves and last for several weeks. Will grow in sun or shade, moist or dry. Each. .... .50

## MARICA

**GRACILIS** (The Flag Lily). This plant belongs to the Iris family. It grows in clumps or tufts, with dark green foliage that bends at the tips. The flower stalks are like the leaves, and the flowers are produced from the edges, near the tips. Flowers white, blue and brownish within. Each. .... .75

## MARANTA

**ARUNDINACEA VARIEGATA** (Arrow-Root) Canna-like foliage variegated with white. For summer bedding or pot culture in cold regions. 3 feet. Each. .... .75

## MERTENSIA

**VIRGINICA** (Virginia Bells). Porcelain-blue, turning pink with age. Grows 1 to 2 feet high. Has panicle of flowers in short, pendent clusters. Fine to naturalize with yellow daffodils. Each. .35. Doz. ....3.50

## MILLA (Mexican Star Flower)

**BIFLORA.** Umbels of waxy white, intensely fragrant star-shaped flowers, two inches across. Very desirable. Each, .50. Doz. ....5.00

## MONTBRETIA (Tritonia)

Montbretias are of easy culture, preferring a light loamy soil well enriched with leaf mold but no manure or chemical fertilizer should touch the roots. Resembles miniature Watsonias in appearance.

### Standard Varieties

	Each	Doz.
<b>CALIFORNIA.</b> Deep golden yellow, rounded petals, a very free bloomer .....	.10	1.00
<b>FIRE KING.</b> Large glowing scarlet-red, extra fine .....	.10	.75
<b>RAYON D'OR.</b> Rich golden flowers, large spikes loaded with golden yellow blossoms .....	.10	.75
<b>TALISMAN.</b> Beautiful dark scarlet .....	.10	1.00
<b>WESTWICK.</b> Orange red with yellow eye, fine large petaled flower .....	.10	1.00

### Giant Hybrid Montbretias

	Each	Doz.
<b>GOLDFINCH.</b> The branching heads of flowers are of good size, bright yellow with small maroon blotches at center, outer petals heavily shaded brilliant cherry-scarlet, very decorative .....	.30	3.00
<b>HIS MAJESTY.</b> Scarlet shading to gold. One of the finest Montbretias in existence .....	.35	3.50
<b>JAMES COEY.</b> Flowers very large and open, of perfect form with smooth broad petals, rich deep vermilion-scarlet with golden-orange lustre, center yellow with crimson blotches, very handsome, height, 3 1-2 feet. Award of Merit, Haarlem and R. H. S. ....	.20	2.00
<b>LEMON QUEEN.</b> Creamy yellow, pale center, deep orange buds. Very decorative .....	.20	2.00
<b>MARJORIE.</b> Large open flowers, orange-yellow, with crimson center, a beautiful flower, perfectly flat when fully open, height, 3 feet .....	.20	2.00
<b>POCAHONTAS.</b> Rich coppery scarlet, with golden lustre. Center orange with small blood-crimson blotches; flowers large and handsome, height, 3 feet .....	.30	3.00
<b>QUEEN ALEXANDRA.</b> A choice variety with erect habit of growth, chrome-yellow with carmine blotch at base of petals, late flowering, height, four feet. Award of Merit, R. H. S. and Haarlem 1926 .....	.20	2.00
<b>UNA.</b> Rich apricot with carmine blotch; good substance and size .....	.20	2.00

## MORAEA

Each    Doz.

- BICOLOR.** Yellow flower with a purple blotch. Resembles Japanese Iris ..... .75
- GLAUCOPIS (Peacock Iris).** A little gem. White flowers, with rich blue eye-spot on three of the petals. .... .35    3.50
- IRIDIOIDES JOHNSONI.** Charming plants native to the Cape of Good Hope, are allied to the Iris and require the same treatment. The flowers resemble the Iris somewhat but the standards are absent. In color they are white, shading to a light golden yellow in the center and with occasional touches of purple ..... .25    2.50
- IRIDIOIDES (The typical form).** Quite different from the above. Forms flat, fan-shaped tufts of leaves like Marica which lie at an angle. Stems bear offsets like strawberry plants. Flowers like Johnsoni ..... .50    5.00



Moraea Glaucopis

## NEMASTYLIS

- ACUTA.** Beautiful sky-blue flowers with broad overlapping segments, grass-like foliage ..... .50    5.00

## NERINE

Cape bulbs of the Amaryllis family. Very closely related to Amaryllis belladonna, but of more dwarf habit. Culture is exactly the same, forming leaves in the winter, resting dry in summer and blooming in the fall, before leaves start.

Each    Doz.

- CURVIFOLIA, var. FOTHERGILLI MAJOR.** A magnificent plant for house or conservatory. Intense, shining scarlet. By artificial light the crystalline cells of the petals sparkle like jewels. Flowers freely ..... 1.50    15.00
- SARNIENSIS (The Guernsey Lily).** A lovely plant for greenhouse or conservatory, producing heads of red flowers before the leaves ..... .25    2.00
- MIXED HYBRIDS.** Beautiful shades in orange, pink and salmon ..... 1.75    17.50



Nerine Sarniensis

## OPHIOPOGON

Each    Doz.

- JABURAN.** This plant resembles the Liriope in leaf and habit of growth, but it is a more robust plant with white flowers. Excellent for shady locations and growing in pots or boxes .... .35    3.50

## OXALIS

Most of these Oxalis flower from October until Christmas, and later. Easily grown, requiring only a good, somewhat peaty soil, with considerable light, for their successful growth. Pretty evergreen plants adapted for border, window boxes or hanging baskets.

Doz.    100

- DEPPEL.** Pure white ..... .50    3.50
- LASIANDRA.** Rosy-pink, cut foliage ..... .50    3.50
- SHAMROCK.** Clover-like foliage ..... .50    3.50

## PANCRATIUM

Each    Doz.

- MARITIMUM (Sea Daffodil).** An old-world representative of the Spider Lily and Ismene group. Pure white Ismene-like flowers, and gray-green daffodil-like foliage. Fragrant ..... .20    2.00

## PARADISEA (St. Bruno's Lily)

Each

- LILIASTRUM.** Related to the St. Bernard Lily. Pure white, grows as high as one foot. Sturdy. .... .35



Nerine Hybrid



Double Tuberosa



Schizostylis Mrs. Hegarty



Sternbergia Lutea

## POLIANTHES TUBEROSA TUBEROSE

These are highly prized on account of their intensely fragrant, waxy white flowers, whose odor is much like that of orange blossoms. A few flower spikes in a vase will fill a room with their delicious perfume in a short time. Their ornamental value is considerable, as the flowers are of good substance and lasting qualities, and about 1-2 inches across, forming a pleasing element in any mixed floral arrangement. The name "tuberosa" was not applied from any fancied resemblance to the rose, but on account of the tuberous rootstock. Do well in a warm, sunny situation out of doors, but should be lifted and stored in winter, as they are tender. Natives of Mexico.

	Each	Doz.
SINGLE.....	.10	1.00
DOUBLE.....	.15	1.50

## RICHARDIA

(See Zantedeschia)

## SAUROMATUM

Each Doz.

**VENOSUM** (Syn. Simlense) Monarch of the East. This unique bulb was becoming very popular when horticultural restrictions prohibited importations into this country. In a dry state it will, in any ordinary living room temperature, throw up a flower stalk, bearing a narrow, calla-like flower, red with yellow spots. This is accomplished without planting. The same bulb can then be planted outdoors when the weather warms up and will produce a beautiful green foliage plant. This plant was formerly listed as *Arum cornutum*, which is the trade name, the above being botanically correct. Large bulbs.....1.00 10.00  
Second size ..... .50 5.00

## SCHIZOSTYLIS (Kaffir Lily)

**COCINEA**. Native to South Africa. Beautiful flowers of crimson scarlet, blooming during the autumn months. Prefers full sun and requires plenty of water from June to flowering season. Can be grown in pots for the conservatory ..... .50

**MRS. HEGARTY**. Hybrid of merit. This variety is a strong grower with well expanded flowers of fresh, clear pink .....1.00

## SPIRAEA (Astilbe)

Beautiful, feathery house plant of delicate shades. Can also be used for outdoor planting. Each

<b>AMERICA</b> . Lilac-rose, handsome foliage .....	.75
<b>GLADSTONE</b> . Finest white, large flowers .....	.75
<b>QUEEN ALEXANDRA</b> . Beautiful pink, strong grower and free bloomer .....	.75

## SPREKELIA

Each Doz.

**FORMOSISSIMA** (Jacobean Lily). Brilliant flowers of dark crimson, with narrow reflexing and spreading petals. Native of Mexico. .... .25 2.50

## STERNBERGIA

Each Doz.

**LUTEA**. Dwarf yellow flowers resembling a Crocus, blooming during August and September in great profusion. Each bulb produces 4 or 5 flowers ..... .25 2.50

## STRELITZIA

**REGINAE** (Bird of Paradise Flower). Beautiful flowers, which resemble birds about to take flight; gayly colored in deep blue and orange. A lovely subject for the conservatory or patio. The foliage is banana-like. Very rare. Small plants. Each ..... \$2.50



GORDON AINSLEY    ::    ::    CAMPBELL, CALIFORNIA



*Tigridia Pavonia Hybrids*



Tigridia Pavnion Canariensis



Tigridia Hybrids



Vallota Purpurea

**THALIA**

Each Doz.

**DIVARICATA.** A magnificent native ornamental bog plant which may be grown in the North as easily as a Canna. The enormous leaves with red midribs, resemble a Banana and are 2 to 4 feet tall. The purplish flowers are borne on central stems 6 to 10 feet tall. An excellent plant for the South ..... .50 5.00

**TIGRIDIA**

Sometimes called Mexican Shell Flower; one of the most showy of summer flowering bulbous plants; blooms from midsummer until frost, grows about 2 feet high and produces large, wide-open triangular blossoms often four to six inches across. The colors and markings are very brilliant combinations of yellow, scarlet and pink. Clumps of them, planted in the border, are most gorgeous. The culture is the same as for gladiolus. Each Doz.

- PAVONIA CANARIENSIS.** Light yellow with scarlet spots. .... .30 3.00
- PAVONIA ROSEA.** Rose with white spots ..... .40 4.00
- PAVONIA SPECIOSA.** Scarlet red with yellow spots ..... .30 3.00
- Mixed Hybrids.** First size ..... .15 1.50
- Second size. .... .10 .75

**TRITOMA (Torch Lily)**

(KNIPHOFIA)

Showy decorative plants, bearing flower spikes from golden yellow to orange scarlet. An excellent plant for the perennial border. Each Doz.

- PFITZERI.** Beautiful flame red; 3 to 4 feet high. A prolific bloomer ..... .30 3.00
- RUFA.** Orange yellow; tall slender flowers and foliage ..... .25 2.50
- Dwarf Hybrids,** 12 to 18 inches high. Golden yellow to deep orange. Very desirable for low positions in the rock garden ..... .25 2.50

**TRITONIA**

**ROSEA.** A very lovely species, bearing in summer dainty spikes of pretty rose colored star-shaped flowers. A charming little plant, distinct and very free flowering; it is well worth growing for table decorations, being very light in its habit .25 2.50

**VALLOTA (Scarborough Lily)**

Each Doz.

**PURPUREA.** A native of South Africa and one of the most attractive of the Amaryllis family. Many flowers of bright red color. Same culture as Amaryllis. Very scarce ..... .75 7.50

**VELTHEIMIA**

Each

**VIRIDIFOLIA.** Cape bulb. Many long glossy green leaves, wavy on the edge. From the center of these leaves appears a stout stem 1-2 feet high, topped with a dense spike of 25 or 30 flowers of a delicate old rose shade. Requires a shady location. ....3.50

**WACHENDORFFIA**

Each Doz.

**THYSIFLORA.** A streamside evergreen plant of the Lily family. (Was formerly included in the suppressed family Haemodoraceae, or "blood-root" family, as evidenced by its scarlet roots.) Flowers yellow and russet, Star-shaped, on tall stems. Foliage Tigridia-like, in dense clumps. Thrives in any moist situation. ....1.00 10.00

## XANTHOSOMA

Sub-tropical aroids of great beauty. They are hardy in the lower south, and make attractive plants for summer bedding in the northern states. Decorative for their foliage only. Require a rich soil.

	Each	Doz.
<b>BATAVIENSE.</b> Dark green leaves, with veins and ribs showing purple on under surfaces .....	1.00	10.00
<b>MARSHALLI.</b> Quick grower. Green leaves, dark stems .....	.50	5.00
<b>SAGITTIFOLIUM.</b> Large leaves of pale green. Good border plant .....	.75	7.50
<b>TRILOBA.</b> Plain green leaves and green stems. Leaves three-lobed. Distinct variety .....	.75	7.50

## ZANTEDESCHIA (Calla Lily)

The so called **RICHARDIA** or Calla Lilies strictly speaking are all "Zantedeschia" after Francisco Zantedeschia, an Italian botanist. The only true "Calla" being *C. Palustris*, a native species of some of the eastern states.

These desirable plants are of easy culture, which can be used with good effect for outdoor planting, in mild climates, or are suitable for potted plants.

	Each	Doz.
<b>AETHIOPICA (The Lily of the Nile).</b> The large white Calla. Tall .....	.25	2.50
<b>ALBO-MACULATA.</b> Ivory-white, leaves arrow-shaped, spotted white. ....	.30	3.00
<b>ELLIOTTIANA.</b> Yellow Calla. Finest, rich golden yellow flowers, medium height, large bulbs ...	.35	3.50
Medium size bulbs .....	.25	2.50
<b>REHMANNI.</b> Pink Calla. Low growing. Leaves elliptical or oval, differing from the usual form. Flowers rose-pink .....	1.00	10.00

## ZEPHYRANTHES

Lovely dwarf bulbous flowers, members of the Amaryllis family. Many of the species are native to the southern states and Mexico, where the long dry periods followed by heavy rains have given these bulbs a very unusual and happy gift of blooming when they have had a good watering after a rest of a few weeks.

A great deal of interest in Zephyranthes has been noticed this past season. They are most satisfactory and respond quickly and gracefully to the little care they require.

	Each	Doz.	100
<b>AJAX.</b> Beautiful golden-yellow flower of the Crocus type. ....	.45	4.50	35.00
<b>ANDERSONI.</b> Copper-yellow crocus type. ....	.75	7.50	
<b>ATAMASCO.</b> White. Native of Virginia swamps. ....	.20	2.00	
<b>CANDIDA (Summer Crocus).</b> Pure white, crocus-shaped flowers with rush-like foliage. Quite hardy. Blooms in the Fall .....	.50	3.00	
<b>LONGIFOLIA.</b> Yellow-bronze crocus type. ....	.50	5.00	
<b>ROSEA (Fairy Lily).</b> Lovely rose-pink flowers. ....	.10	.75	5.00
<b>TEXANA.</b> The flowers are of the crocus type. Golden-yellow inside the petals and a beautiful copper-bronze outside .....	.30	3.00	
<b>TREATIAE.</b> Lily-shaped flowers of pure white, turning pink with age; flat foliage. ....	.10	.75	



Zantedeschia Aethiopica



Zephyranthes Rosea



Water Lily (Nymphaea)



**THE BOOK OF BULBS**, by F. F. Rockwell. With this complete and practical book you can get the utmost in beauty from every kind of bulbous plant. Clearly written by one who knows; illustrated with 187 beautiful photographs and instructive drawings. Includes tulip, daffodils, hyacinths, lilies, crocuses, glads, dahlias, peonies, irises, begonias, and scores of other beautiful but not-so-well-known bulbs. We recommend it as the best and most complete bulb book. 187 illustrations, 264 pages .....

Sent FREE as a premium with an order for \$20.00 worth of bulbs from this catalog at single or dozen rates, if asked for at the same time.

# WATER LILIES

No garden is complete without a water garden or lily pool, and nothing is more beautiful than the fragrant tropical blooms of these improved Water Lilies, with their wax-like petals of so many colors and shades. Water Lilies should be planted in the Spring in the full sun. The pool should be 18 inches to 3 feet deep. In large pools the tubers may be planted in PINE boxes, 2 feet square and one foot deep, one tuber to box. A miniature lily pool can be made with very little trouble by sinking a half-barrel into the lawn, covering the bottom with about eight inches of good garden soil mixed with one-fifth of well rotted cow manure. Cover with one inch of sand and level off well. Plant tubers so the crown is just out of the sand. Fill with water carefully, not disturbing tubers. Do not run too much fresh water into the pool; only enough to take care of evaporation. A few gold fish should be kept in the tub to keep down mosquito larvae.

**AMABILIS.** Delicate pink, free bloomer. Flowers open wide and petals turn out at tips. Each \$10.00.

**ANDREANA.** Beautiful apricot rose, gradually fading to red on last day of opening. Good bloomer. One of the best for tub culture. Each \$1.50.

**ATTRACTION** (New French variety). Blossoms are garnet red and very showy. Flowers 6 to 8 inches across. Each \$7.50.

**COMANCHE.** Very beautiful combination of orange and glowing amber red. Largest and finest of all varieties having apricot tints. Each \$5.00.

**CALIFORNIA.** Largest dark blue Lily grown. Leaves are large with scalloped edges and blotched with dark mahogany spots, sepals light green with mahogany stripes, petals dark blue with pointed tips, stamens bright yellow tipped with dark blue. Each \$5.00.

**CAERULEA.** "Blue Lotus of the Nile." Flowers light blue, fading to nearly white at the base. Stamens yellow; sepals marked with black lines and dots. Each \$1.50.

**ESCARBOUCLE.** Brilliant crimson carmine with bright yellow centers. Free bloomers. Each \$5.00.

**GLORIOSA.** Flowers deep carmine rose, 4 to 6 inches across. Each \$3.00.

**GLADSTONE.** Finest white Lilies in cultivation. Flowers concave and broad. Flowers 8 inches across. Each \$2.00.

**JAMES BRYDON.** Cerise rose blooms. Most popular of the red varieties. Each \$2.50.

**MARLIACEA ALBIDA.** Large white flowers; stamens light yellow, petals flushed pink; fragrant. Each \$1.00.

**METEOR.** Very large flower, deep red, streaked with pure white, sepals lined with red. Each \$10.00.

**MRS. EDWARD WHITAKER.** Flower is a deep lavender blue, lightening as the blossom matures. Open the entire day. Each \$5.00.

**PENNSYLVANIA.** Blue Lily with yellow stamens; sepals marked on outside with black lines and dots. Each \$3.00.

**PANAMA-PACIFIC.** A new variety. Buds are bronze green spotted with a reddish brown; when fully opened the flower is a rich rosy purple. Each \$5.00.

**PYGMAEA HELVOLA.** Canary yellow flowers, 1 to 2 inches across. Each .75.

**PAUL HARIOT.** Large, light yellow flowers shaded to copper. Leaves spotted brownish red. Each \$2.50.

**SUNRISE.** Flowers light cream yellow with ruffled petals. Very fine. Each \$5.

**TUBEROSA ROSEA.** Rosy-pink flowers. Very fragrant. Each \$1.50.

**TUBEROSA RICHARDSONI.** Pure white flowers. Very large and quite double. Each \$1.00.

**VIRGINALIS.** A French novelty. Enormous flower, pure white; yellow stamens. Early and late blooming. Each \$15.00.

**WM. STONE.** Petals royal purple changing to purple blue with pointed tips; stamens golden yellow tipped with purple. Sepals brownish green. Each \$2.00.



**GARDEN POOLS: LARGE AND SMALL**, by Ramsey and Lawrence. Nothing else can add so much to your garden as a pool, even if it is only a transformed wash tub in the tiniest garden space. How to have one is fully explained in this new book. Its text is so complete and its illustrations are so numerous and practical that you can easily find the type of pool that fits in your garden and learn all about designing, planting and caring for it. 41 illustrations, 122 pages. ....\$2.50.

Sent FREE as a premium with an order for \$25.00 worth of bulbs from this catalog at single or double rates, if asked for at the same time.



*"The Golden Trowel"*



**SWEEPSTAKE PRIZE**

Awarded for  
Best General Display of Bulbs  
Grown West of the Rocky Mountains  
Seventh Annual California Flower Festival  
San Leandro, California  
1931