

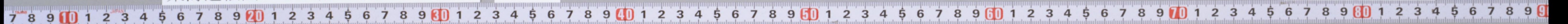


東海道繪圖卷第五 江流亭
金屋亭

1-6
-1

東海道繪圖 10軸 寄別1-6-1 05-001

国立国会図書館



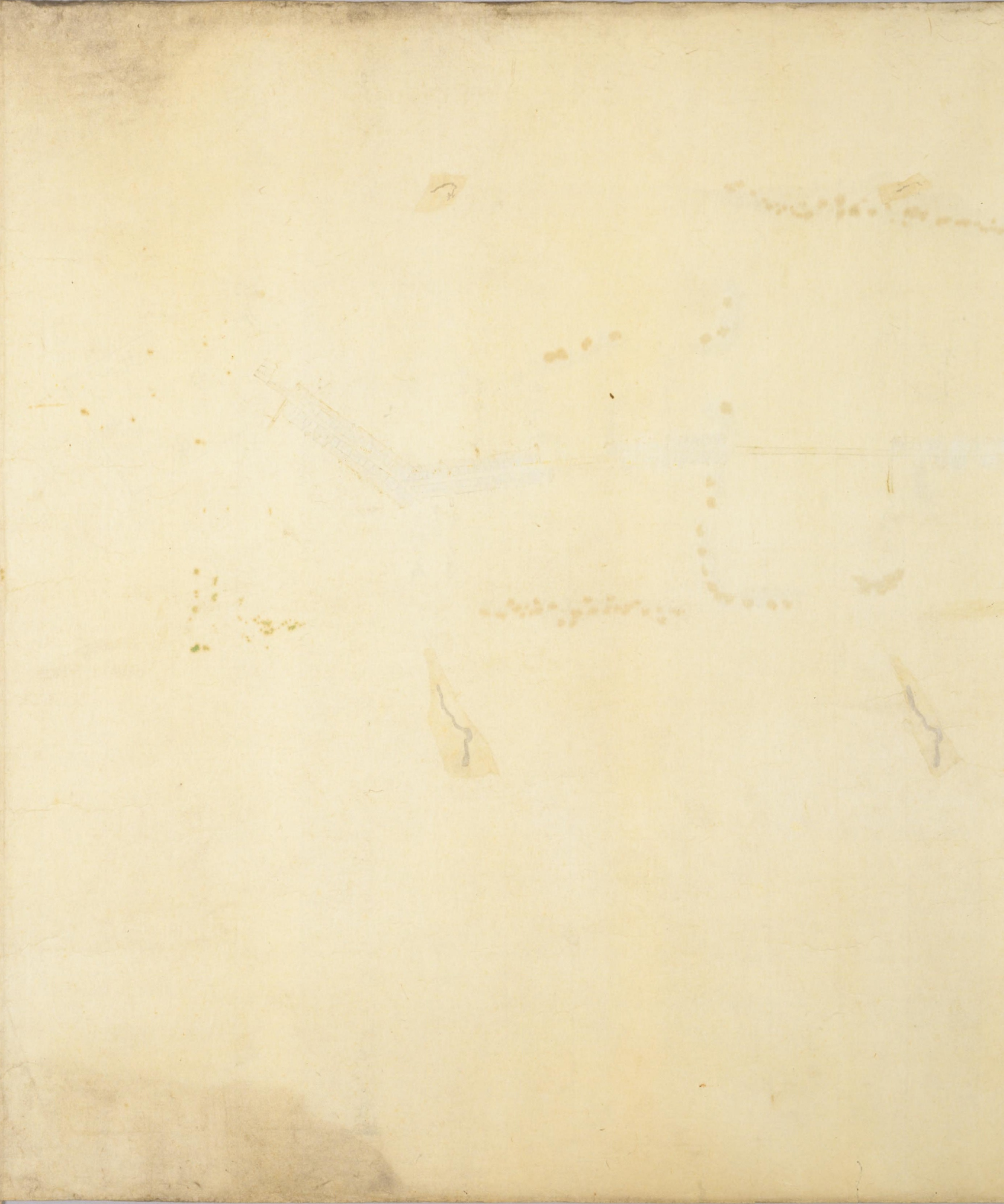


東海道繪圖卷第五

江尻引
全屋

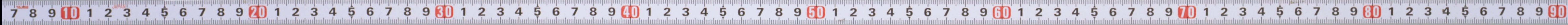
33

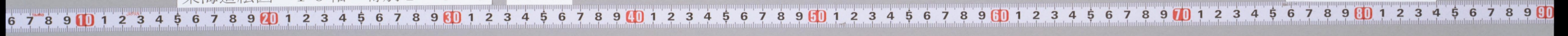
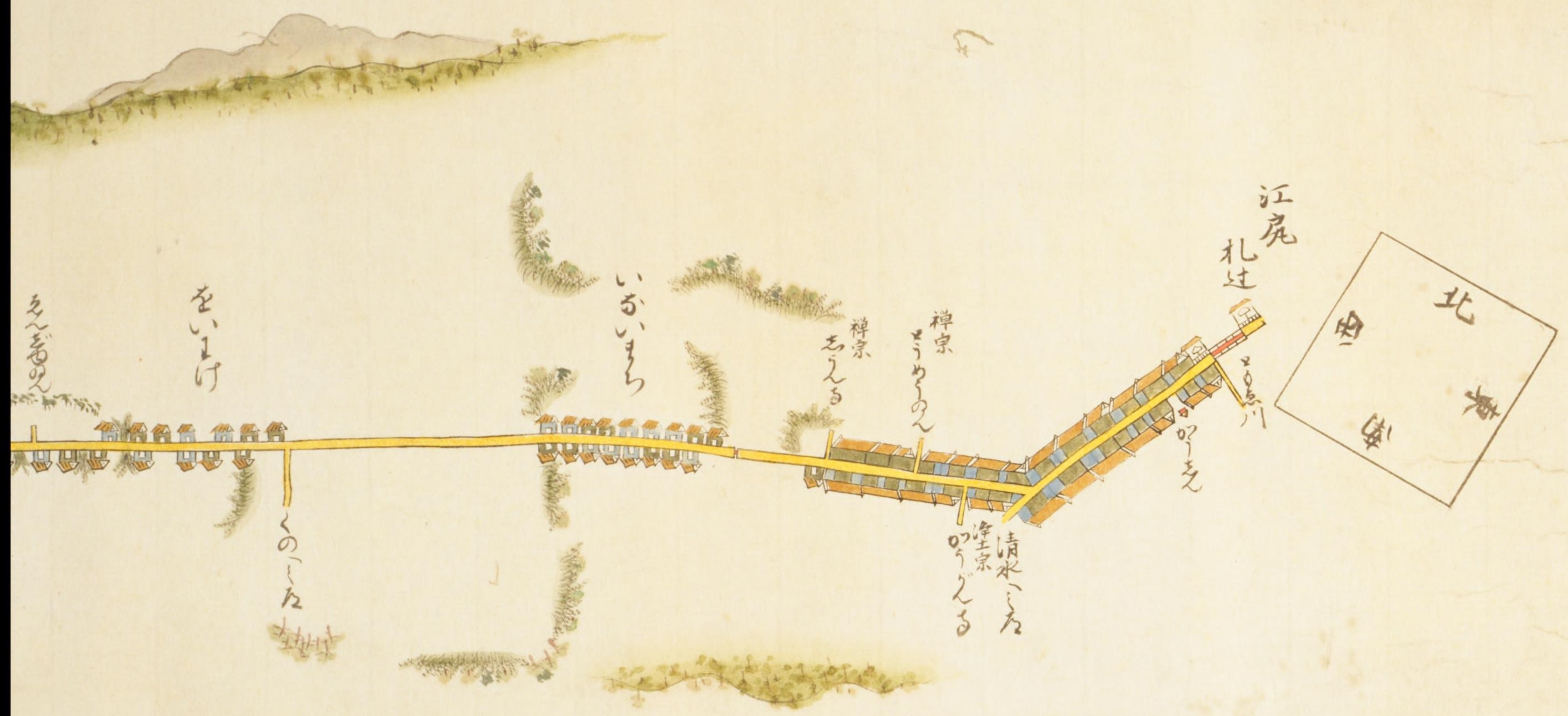
1-6
-1

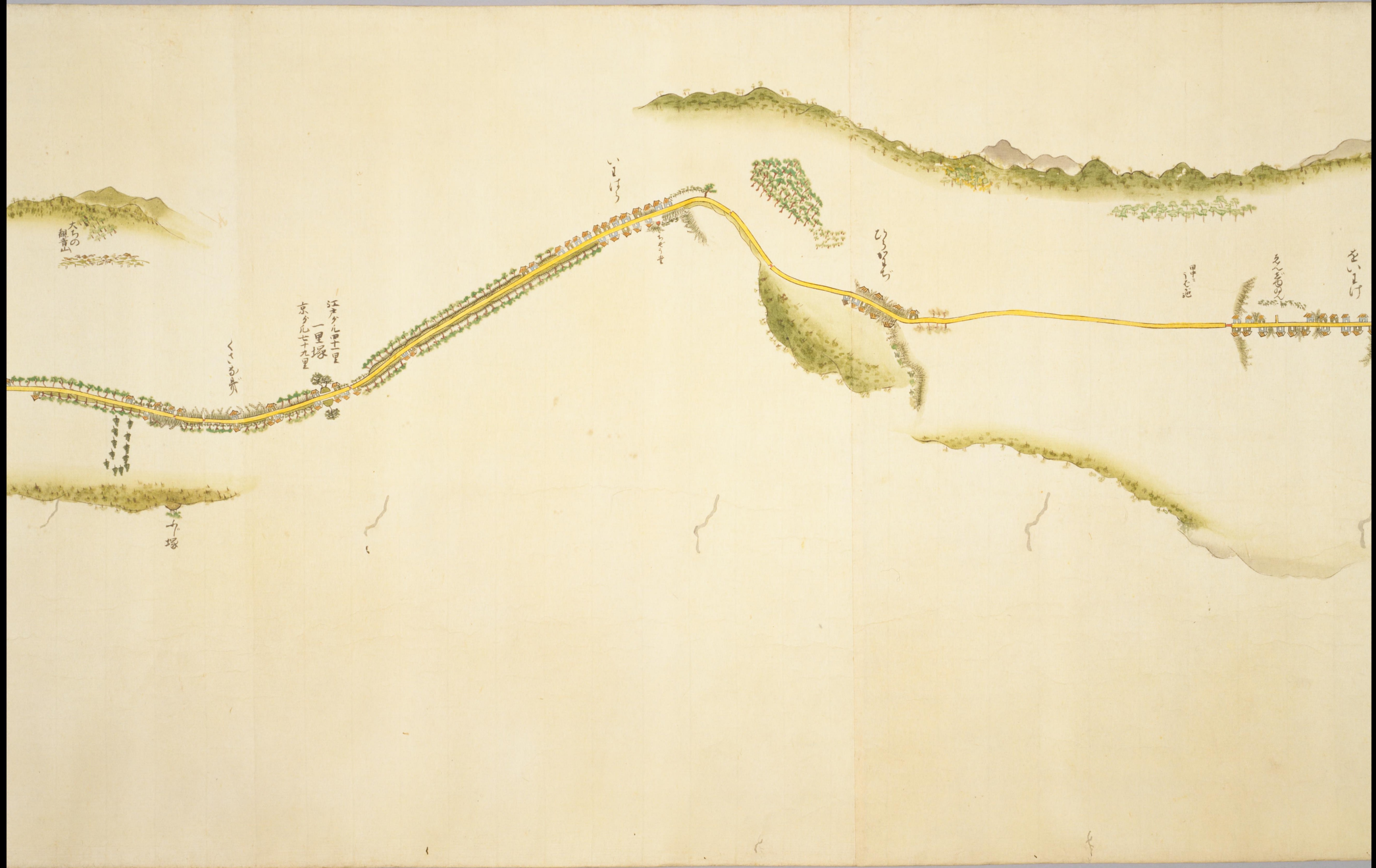


東海道繪圖 10軸 寄別1-6-1 05-002

国立国会図書館







大らの
観音山

江戸から十里
一里塚
京から七十九里

くまの
貴

十塚

い
しけ

ら
うせ

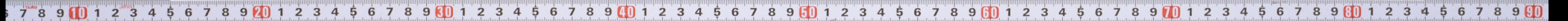
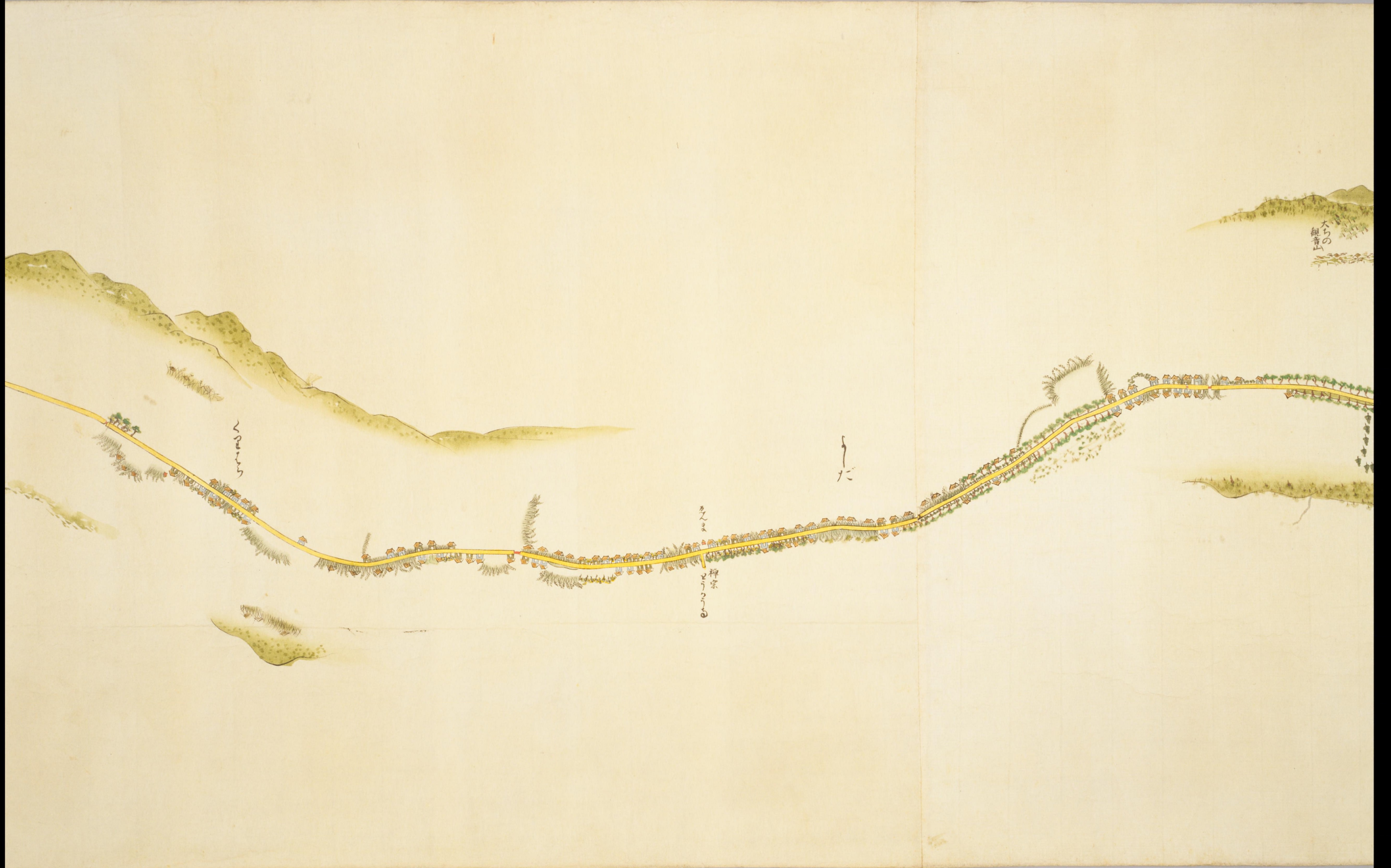
ひ
ろ
ら

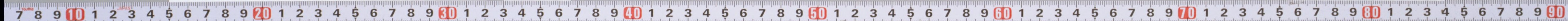
田
中
池

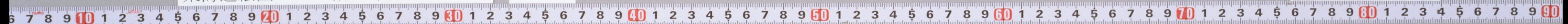
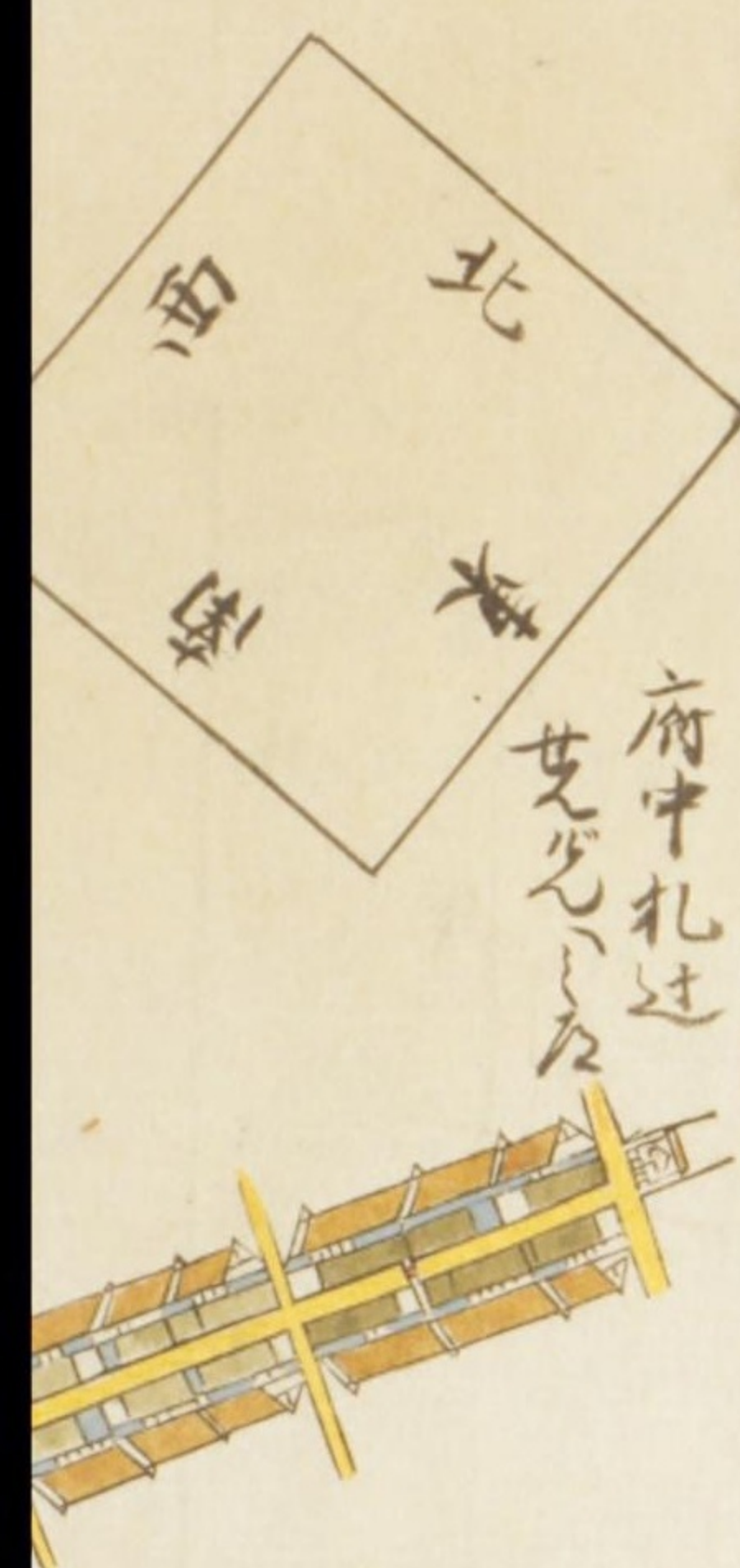
え
ん
の
い

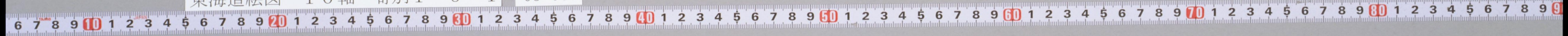
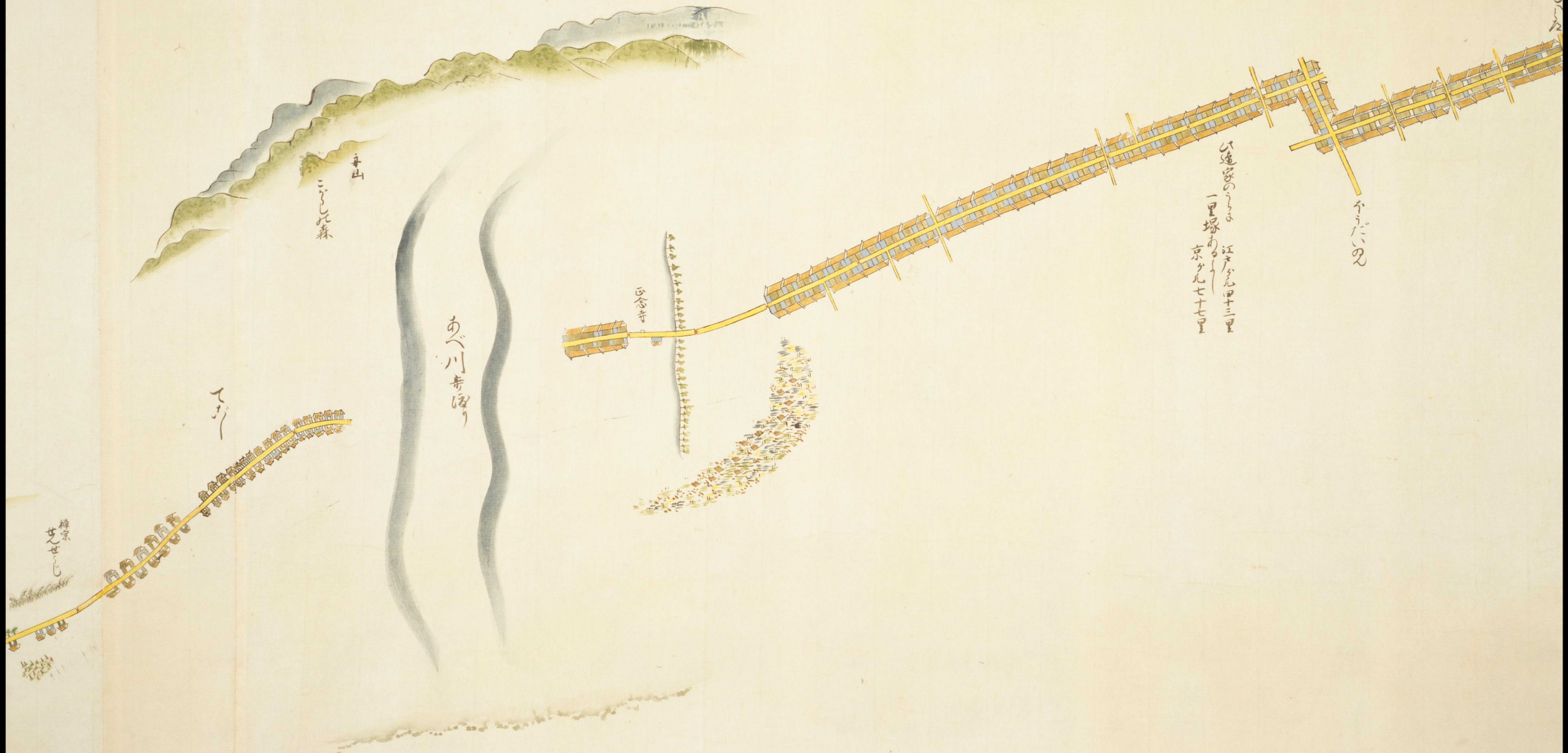
を
い
け

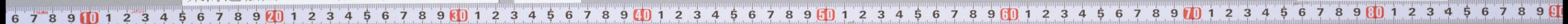
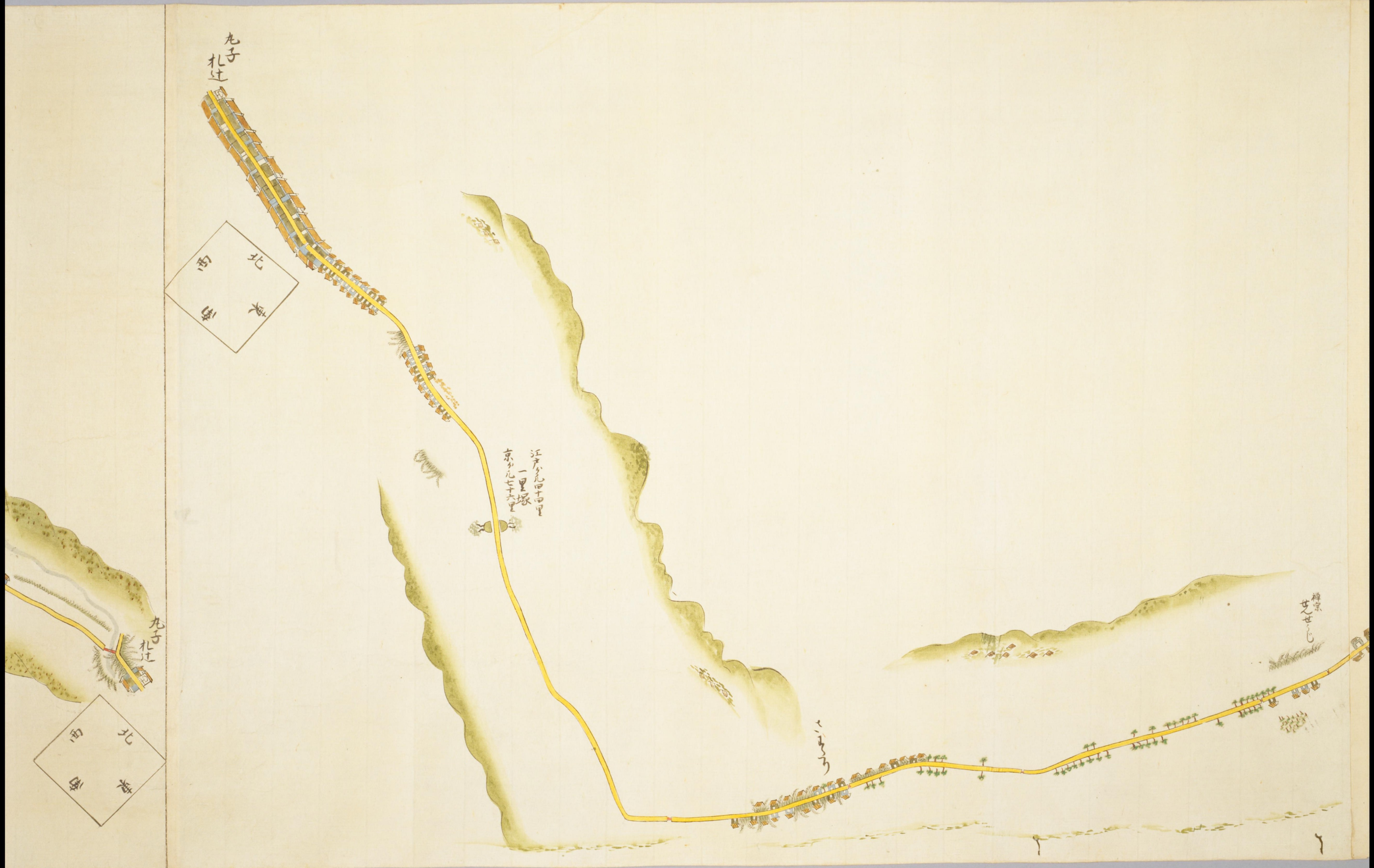


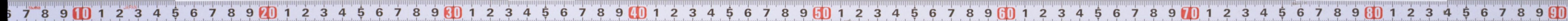
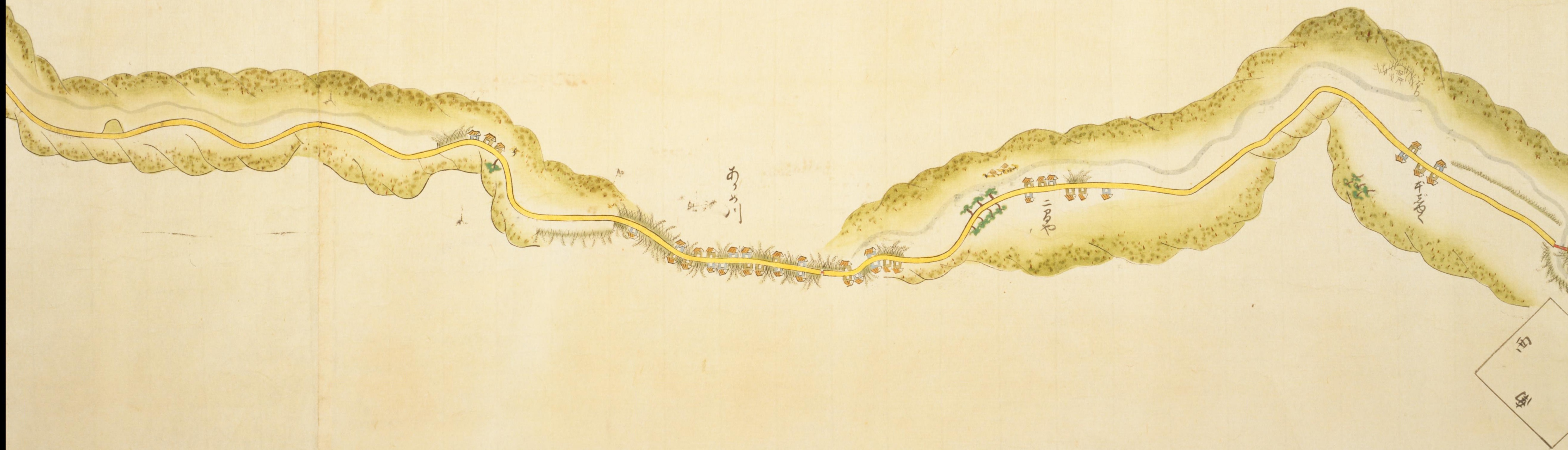


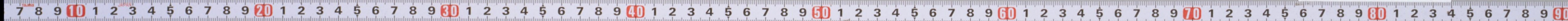


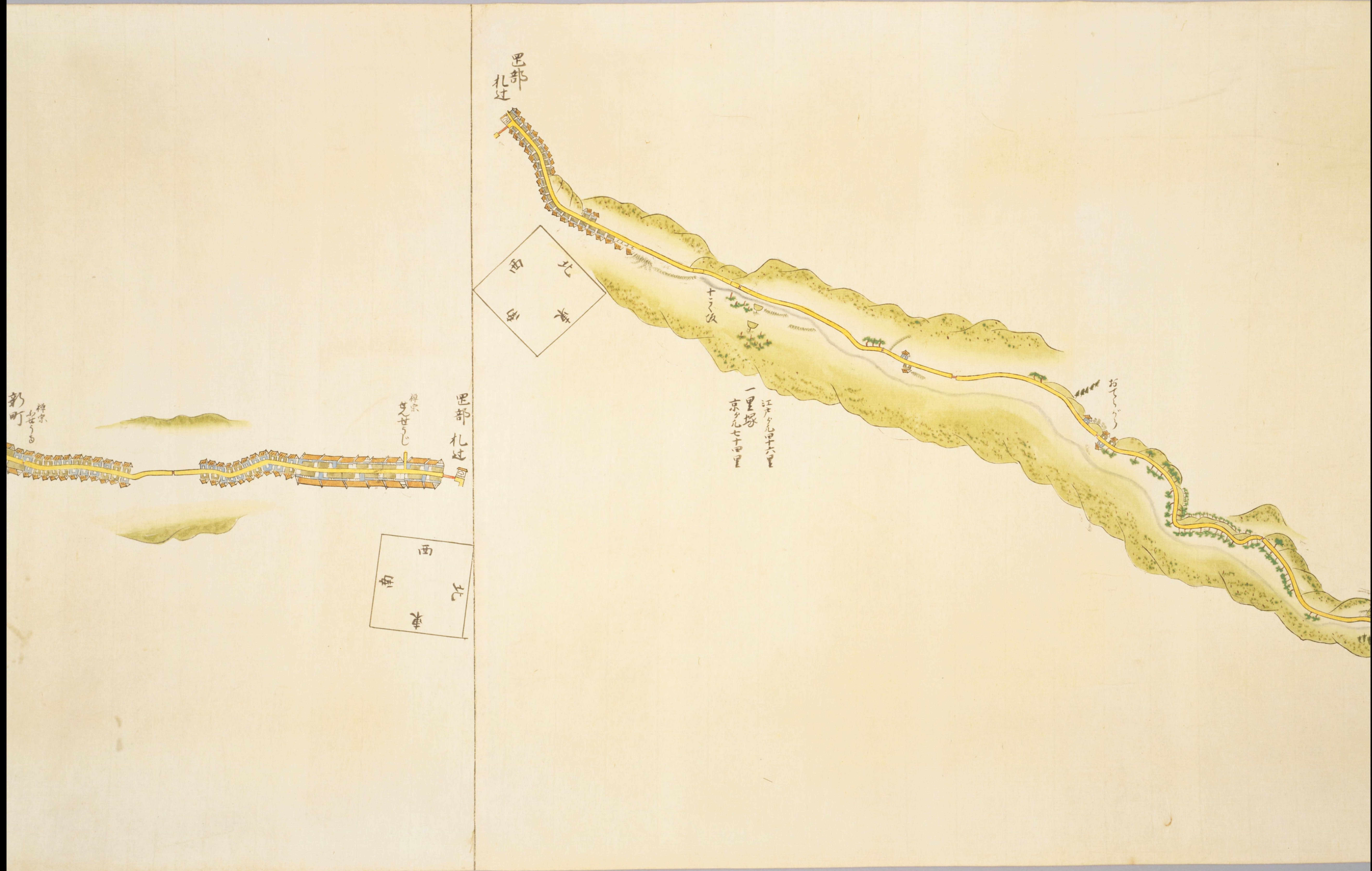












巴部
札辻

北
西
東
南

十二里

江戸より十六里
一里塚
京より七十里

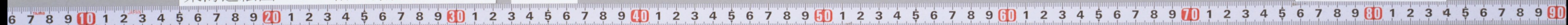
おてし

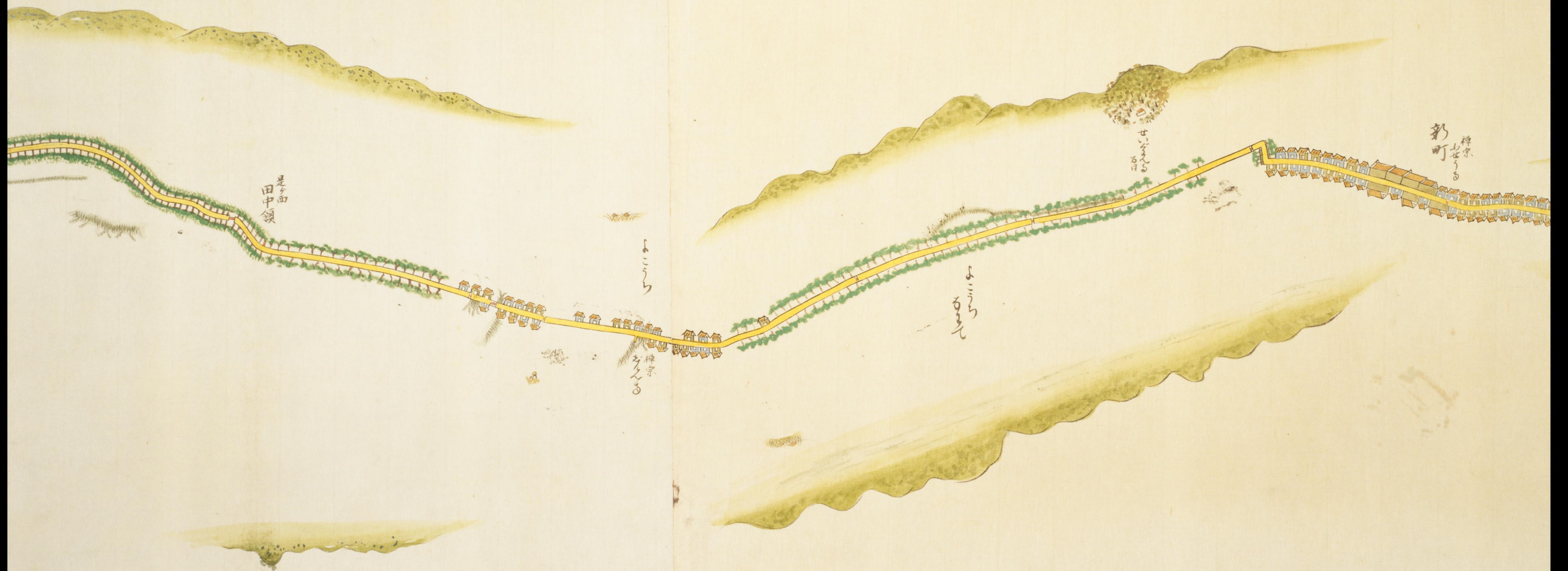
巴部
札辻

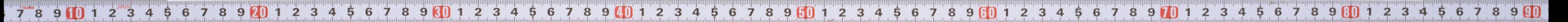
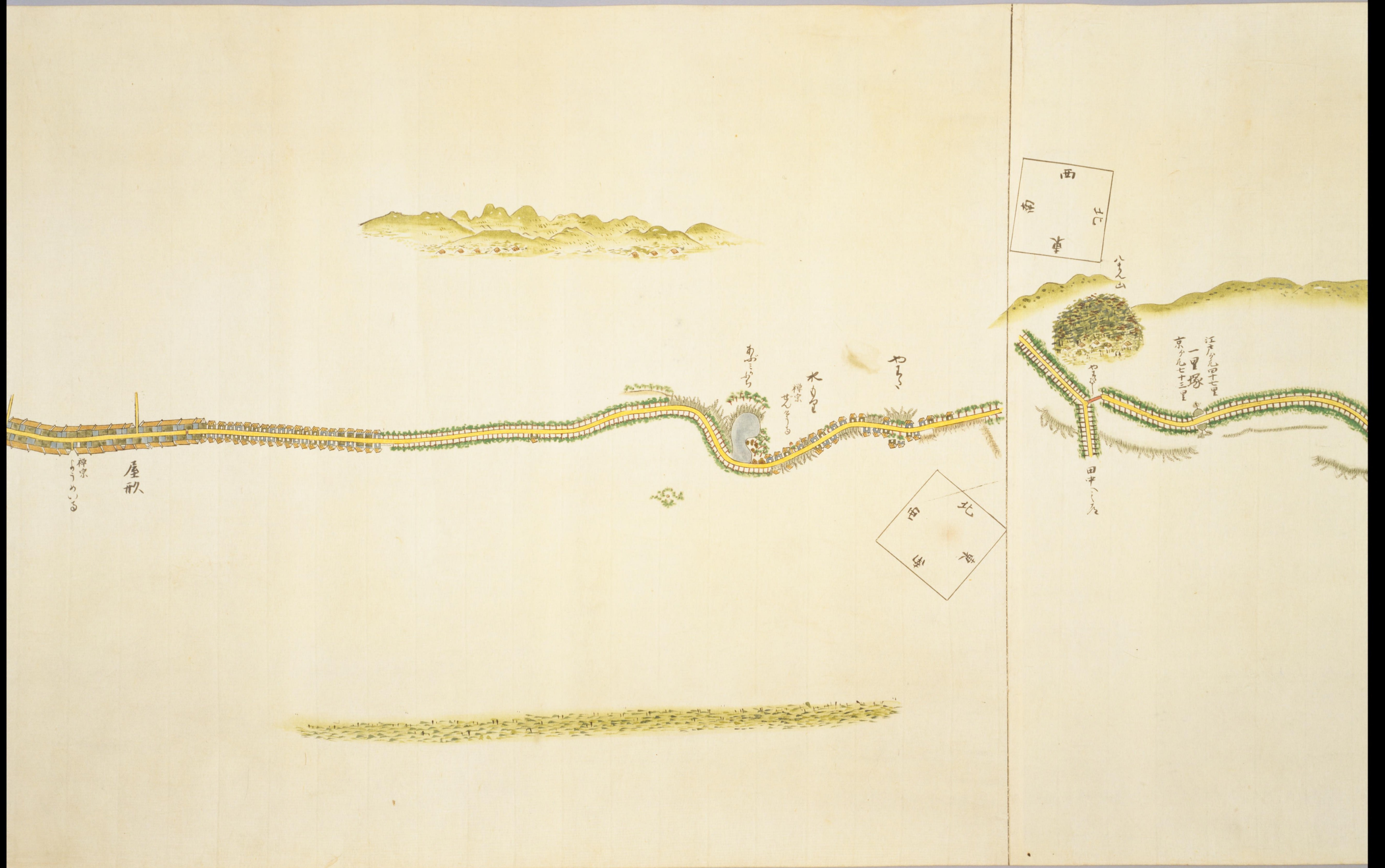
北
西
東
南

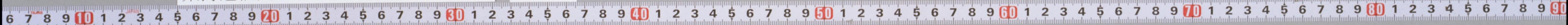
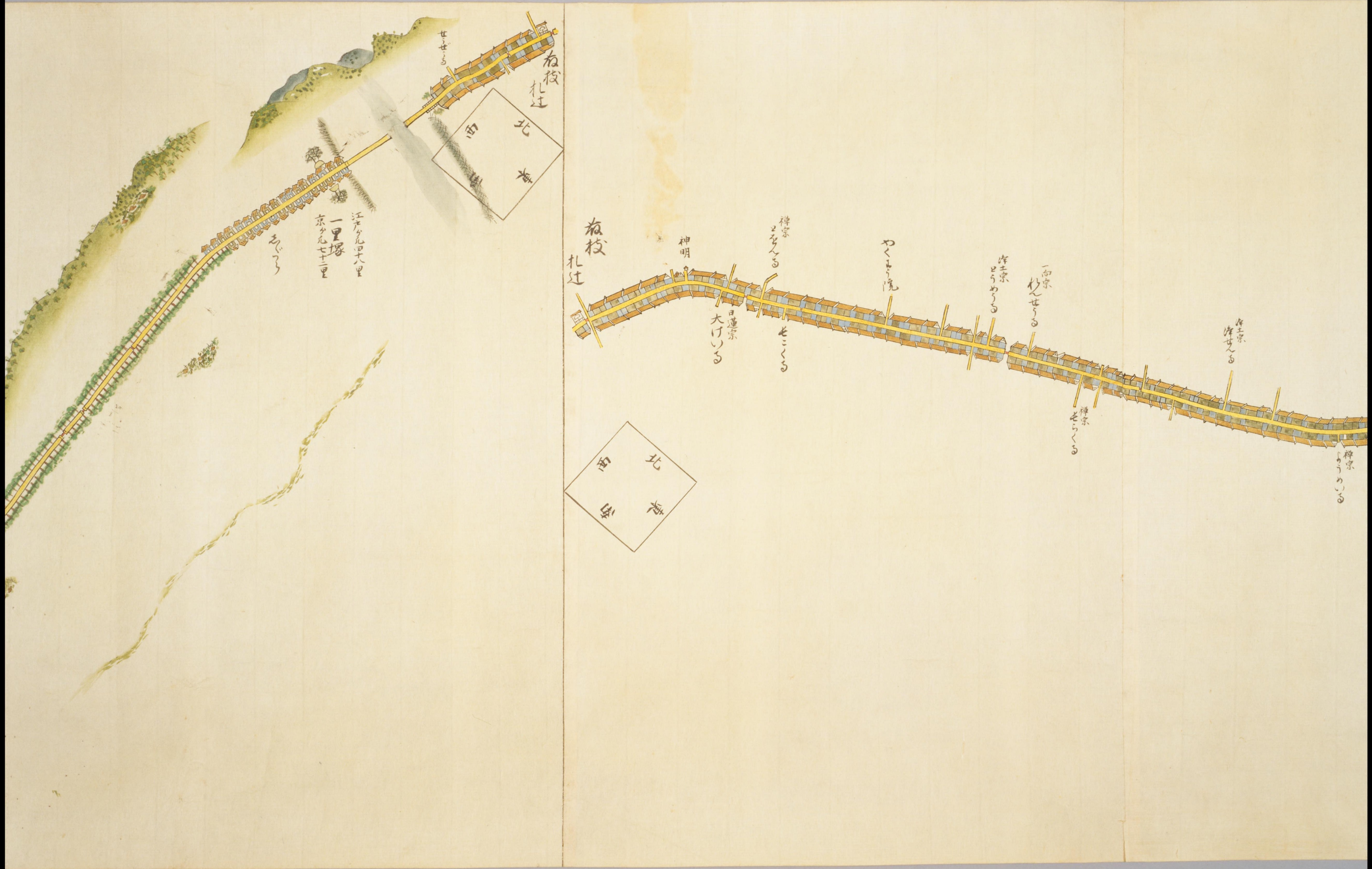
御所
女中

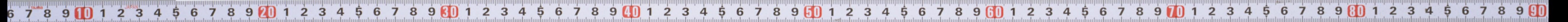
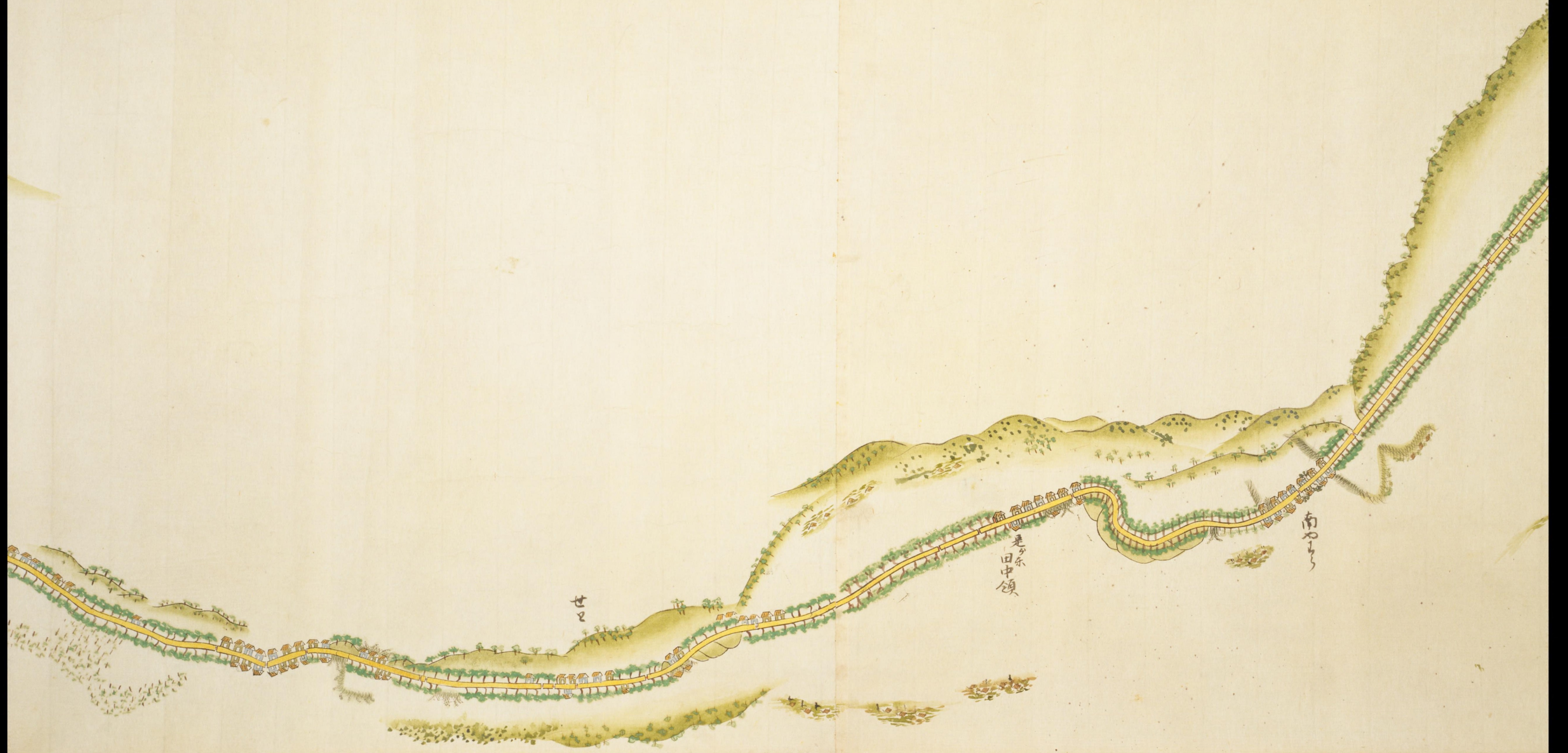
新町
御所

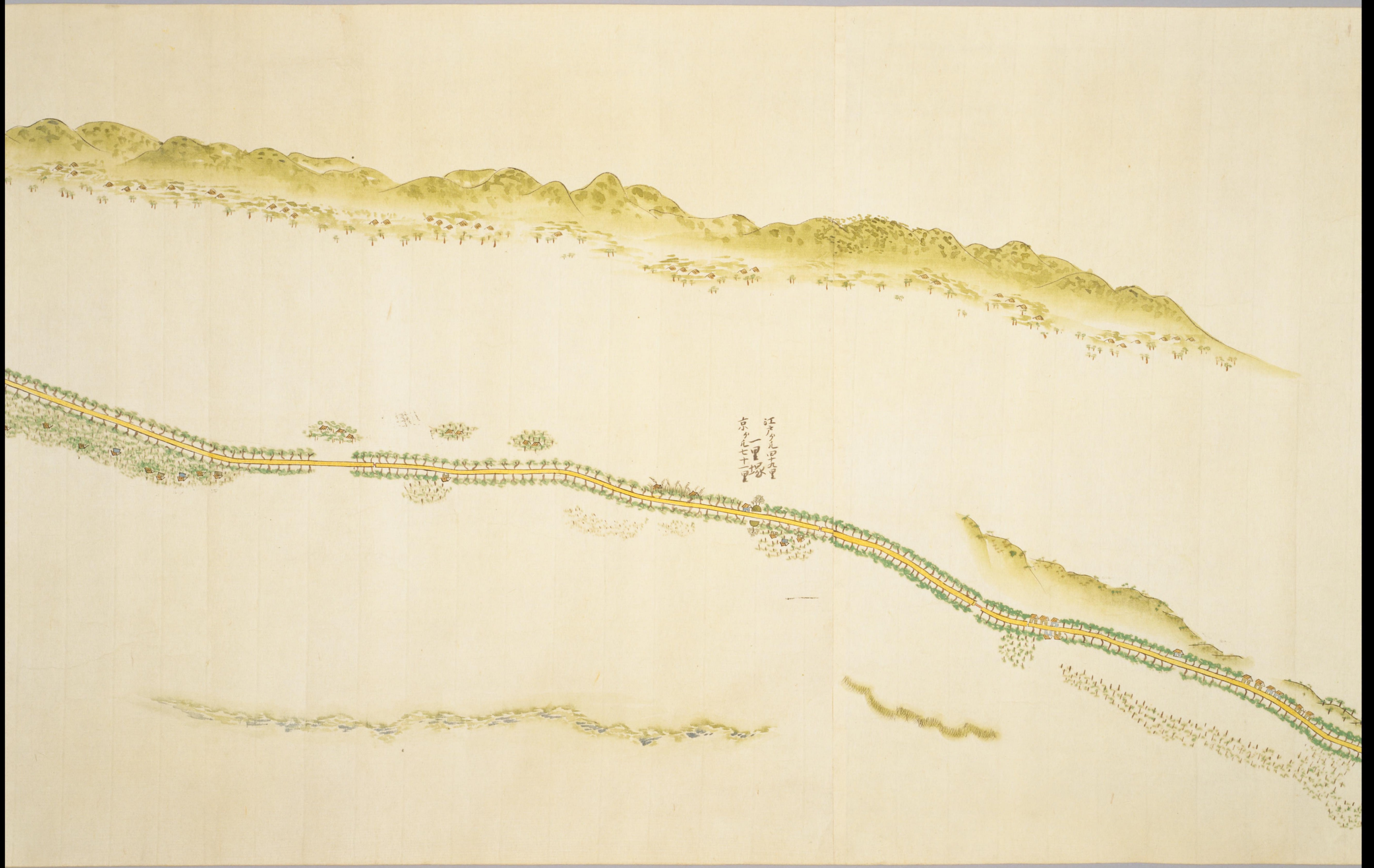






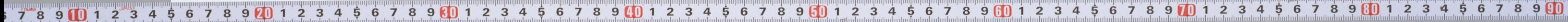
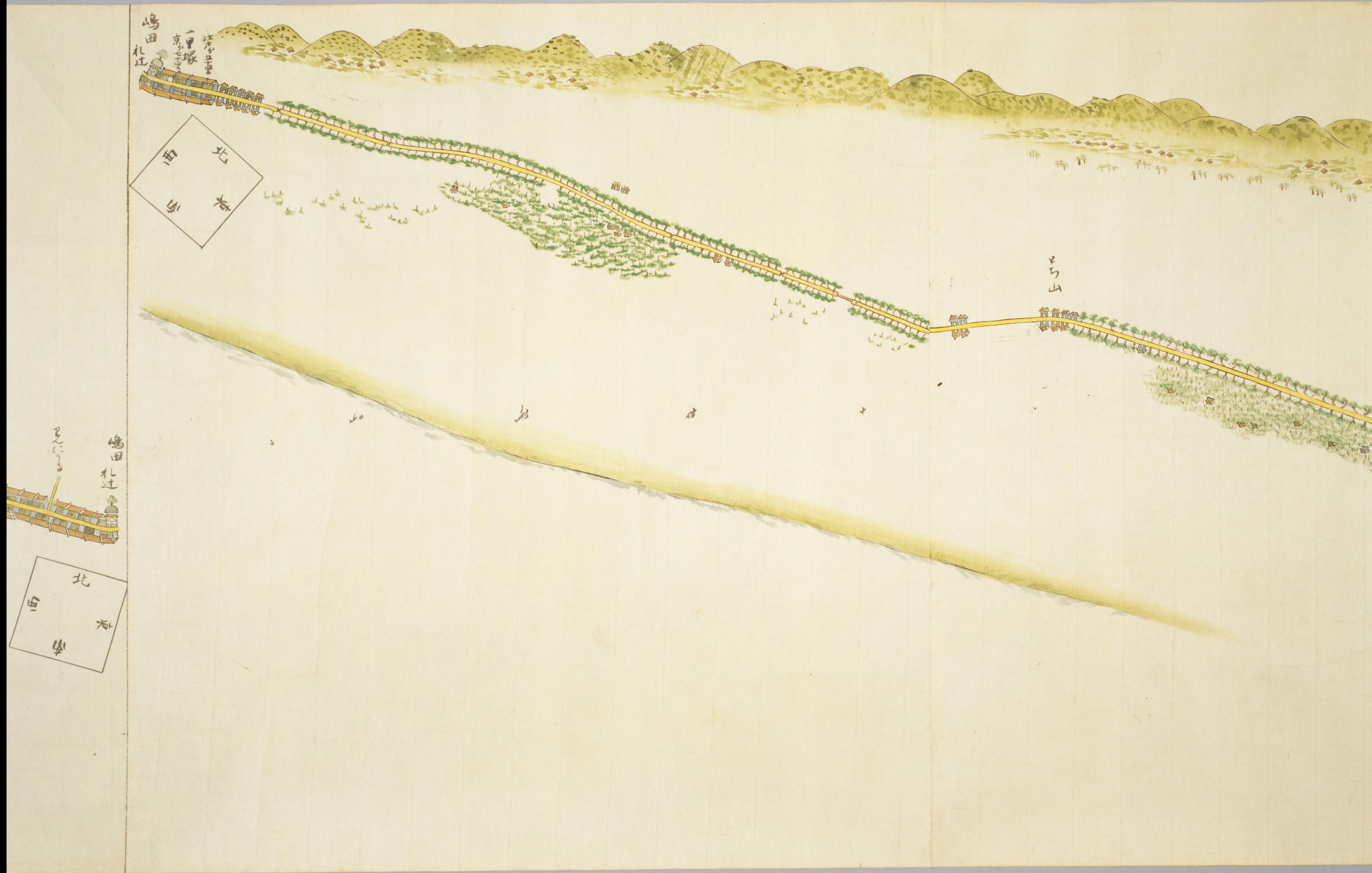


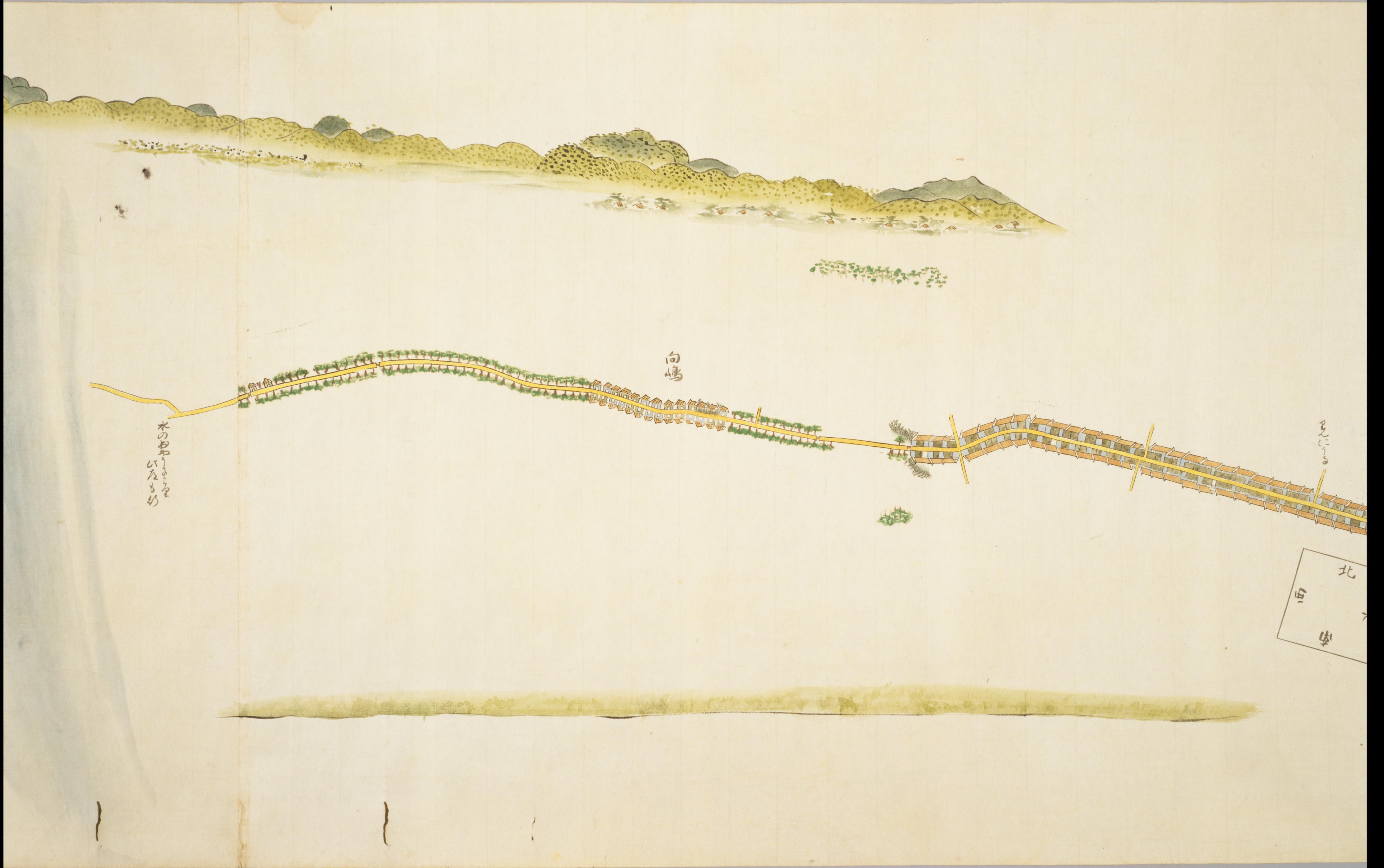
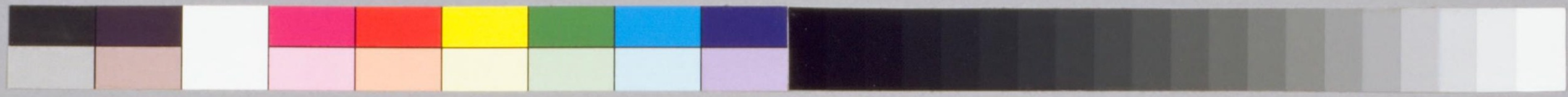




江戸分中九里
京九一里塚





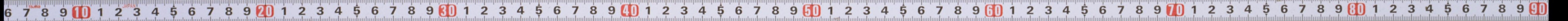


向嶋

水のわき
いんもつ

もんじり

北
西
東





金屋
札辻

大井川歩流り

水の
おろし
は
な
ま
ゆ

