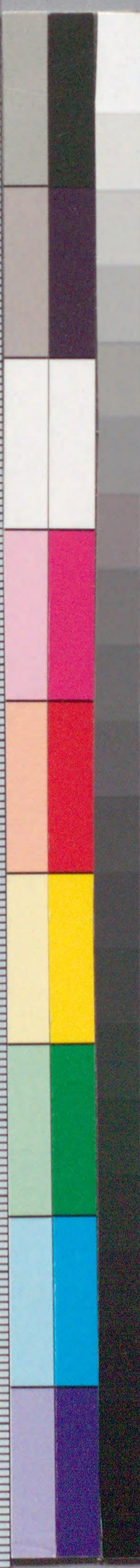
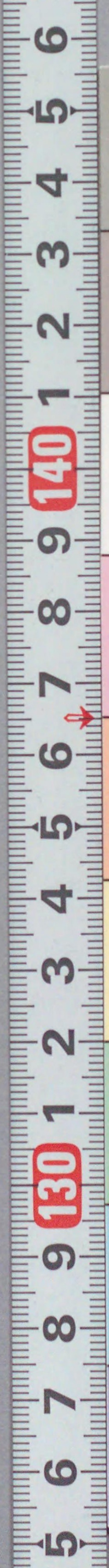




207
780

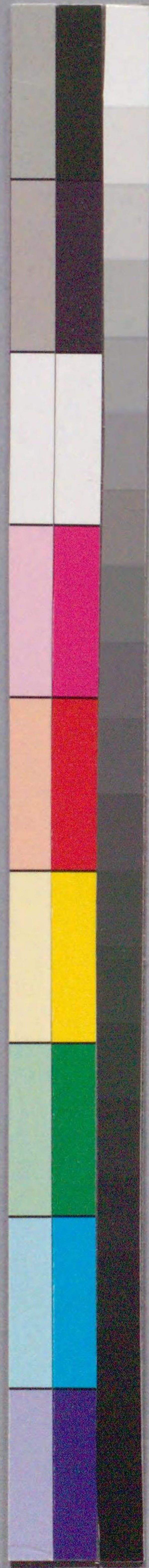
通人料理かしくの献立
全

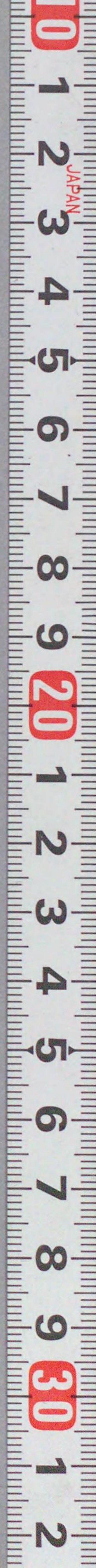
茶書館藏



国立国会図書館 通人料理かしくの献立 前編3巻後編3巻 207-780

ガラス使用





0 1 2 3 4 5 6 7 8 9 20 1 2 3 4 5 6 7 8 9 30 1 2





尾花
六三郎
再二子の六三郎
芳火は苦辛も勇朝比奈に比ま
智の楠公は忠臣後継成て名は蒲原の如

墨相



西施の美よ
小町の相
情厚しととも舌刀の為に命落し黄泉の
鬼とあり貞操と顕は是六三郎
妻於菊とりし

墨筆右門の養子
六三郎鐘成





松平貞右
尼

筆右門

花子源のあれお菊が
妹あり曹軍幼子のうち遠国別
縁の
魂の
影が
縁を
六三が

女とある於園の
一別以未であり
まは家根舟のえ
衆會



越前三国

兩降山の山賊天狗大良が
首級まき閣藏が
同徒

和野の旧臣野山左門が子野山
五郎美助今海賊の首徒
徳の閣藏四國の沖中に
匿れ財を奪身か金
羅をまきひ常遊里に
通ひ村雲の大身といふ

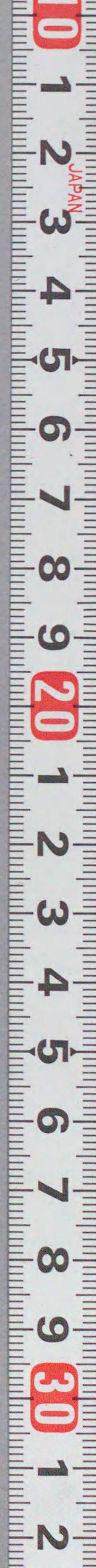


0 1 2 3 4 5 6 7 8 9 20 1 2 3 4 5 6 7 8 9 30 1 2

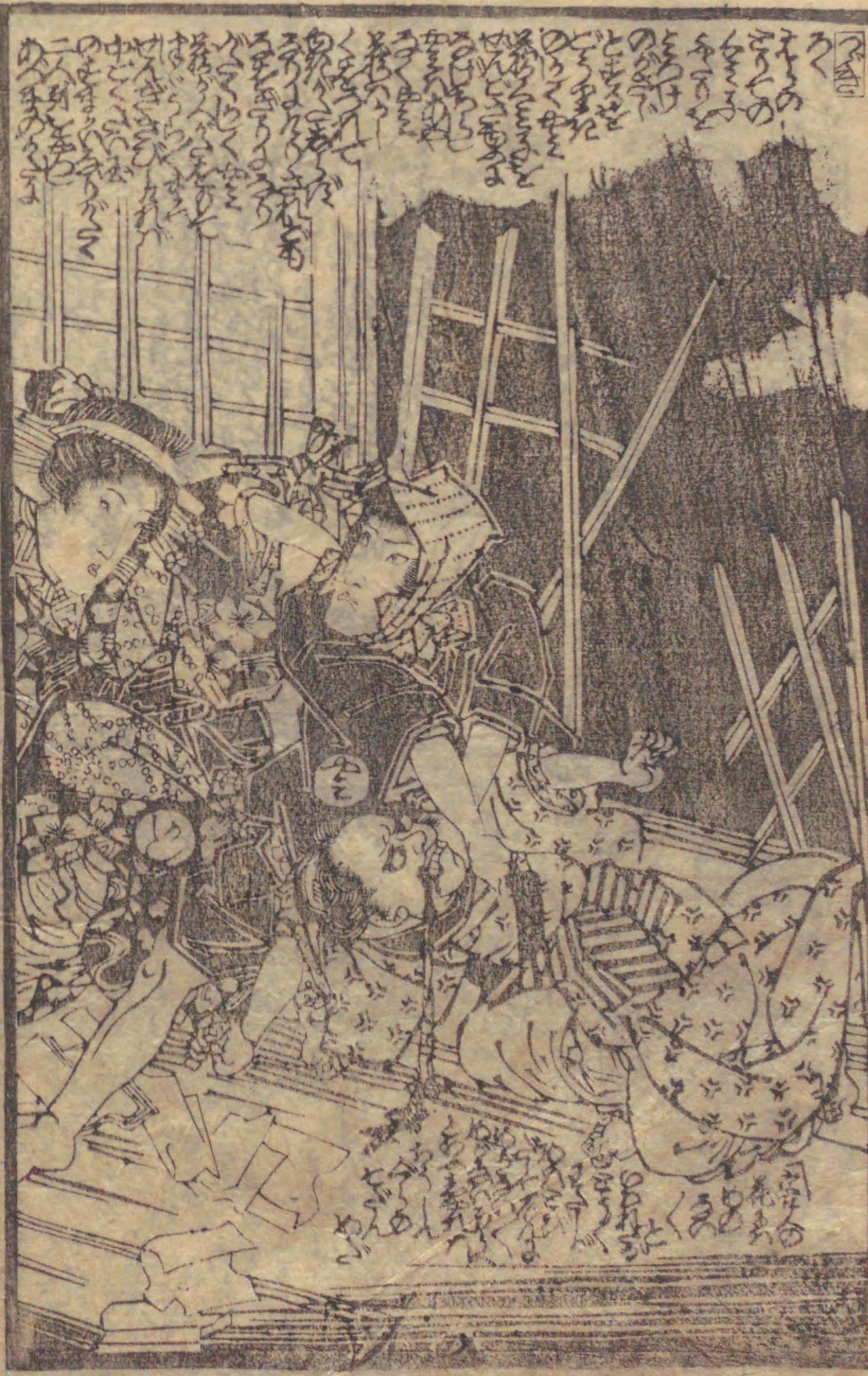
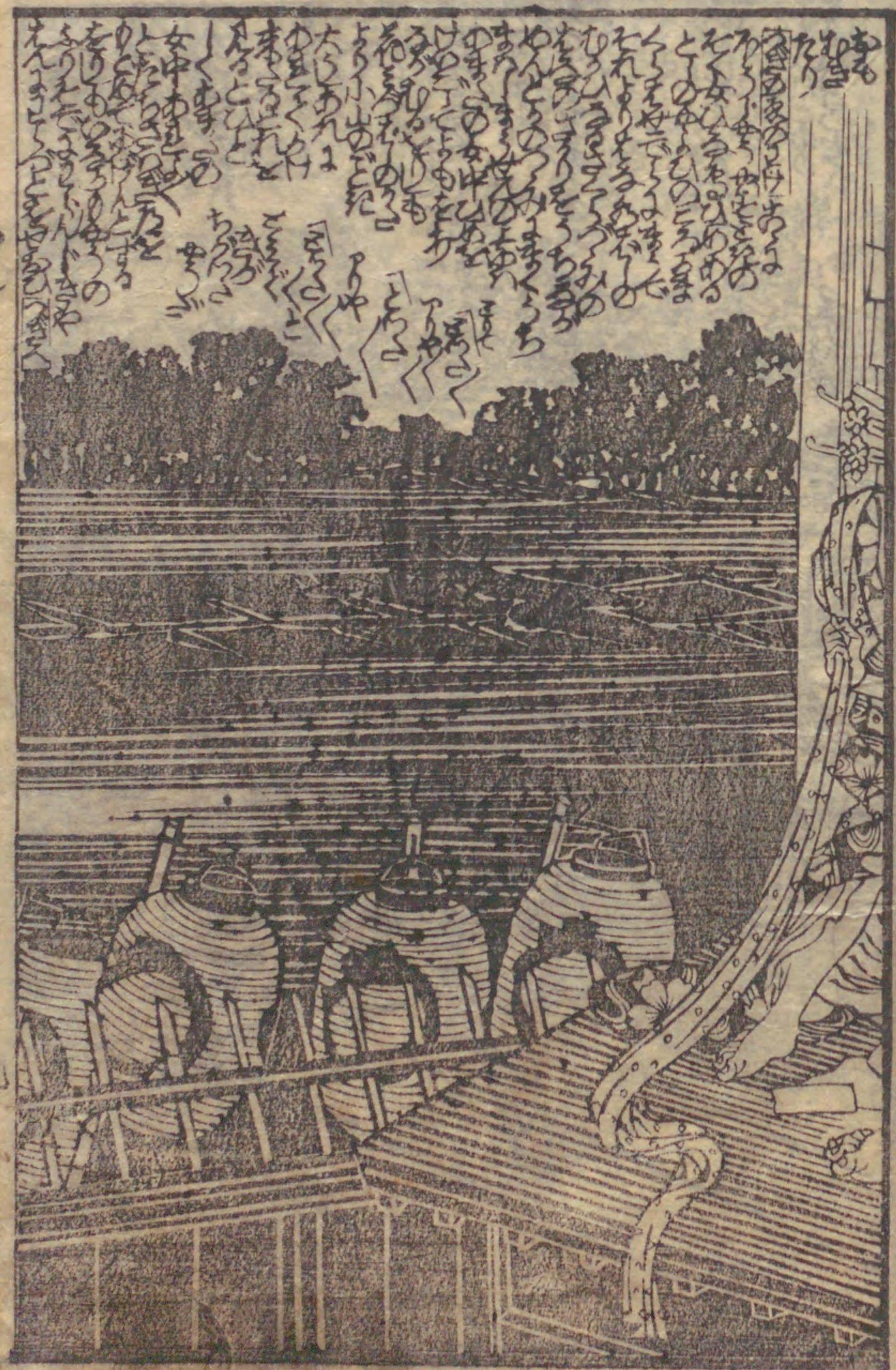


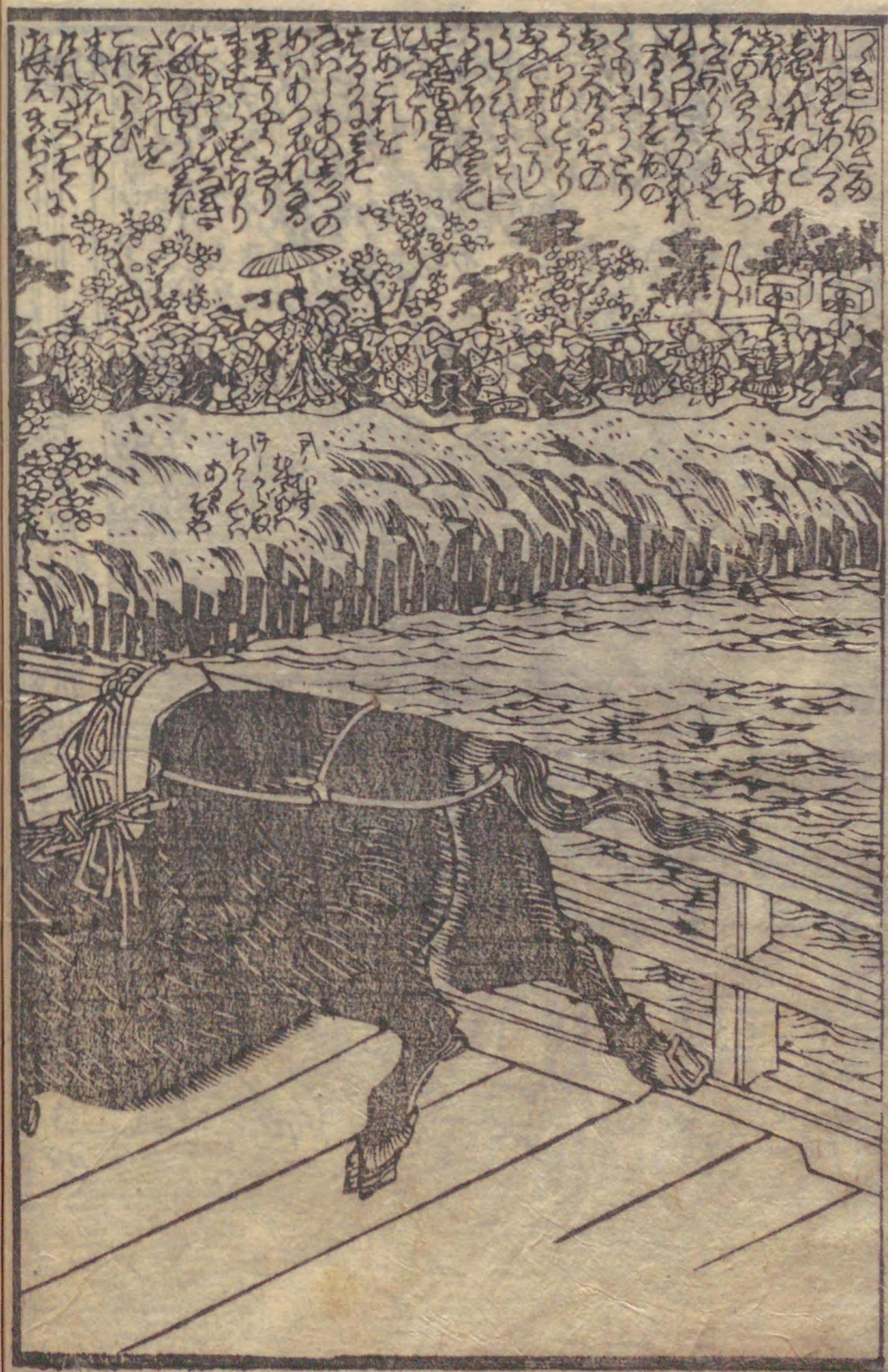
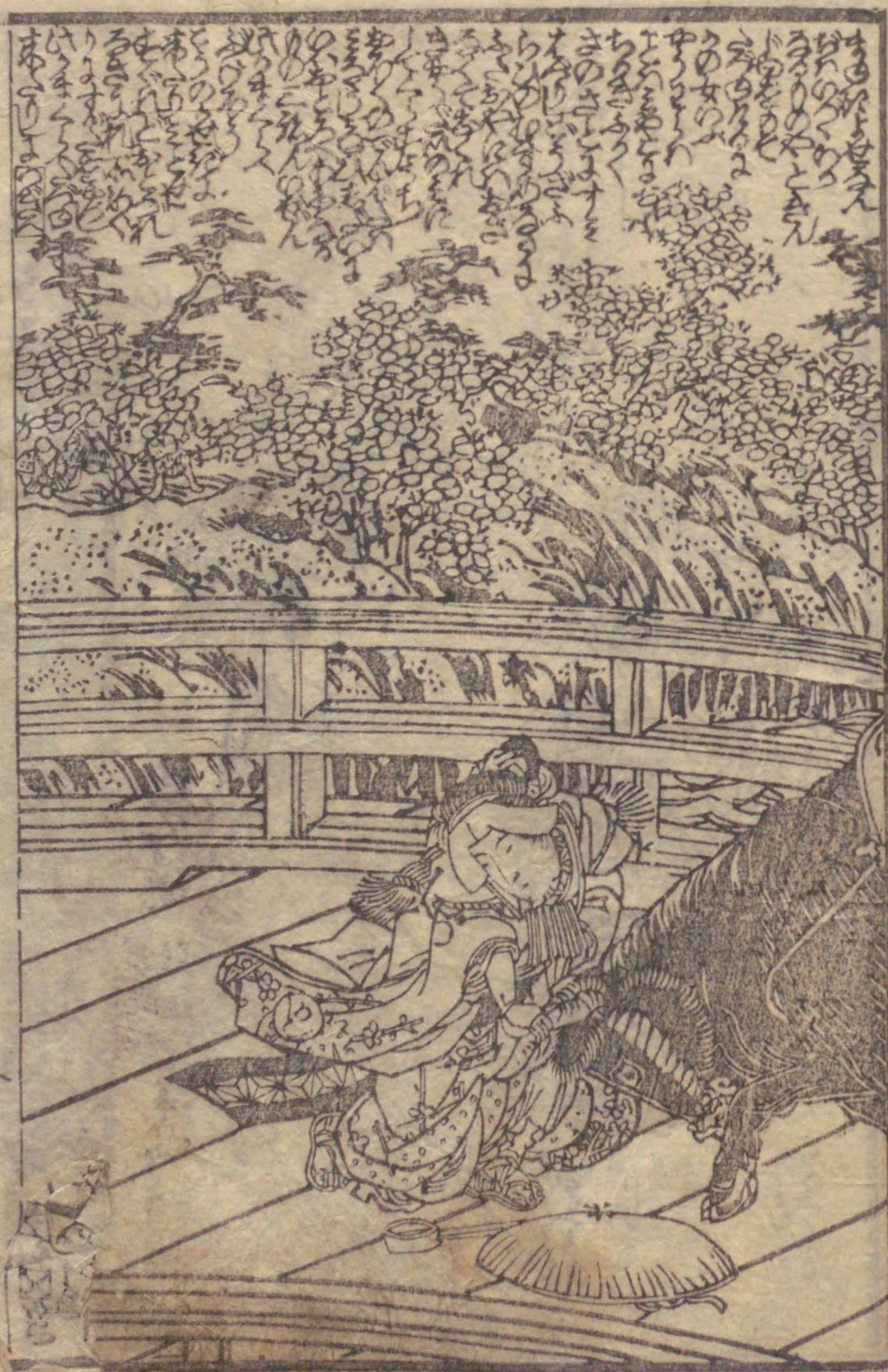
Vertical columns of handwritten Japanese text in kuzushiji script, surrounding the illustration. The text is dense and fills most of the page area.

貳









0 1 2 3 4 5 6 7 8 9 20 1 2 3 4 5 6 7 8 9 30 1 2

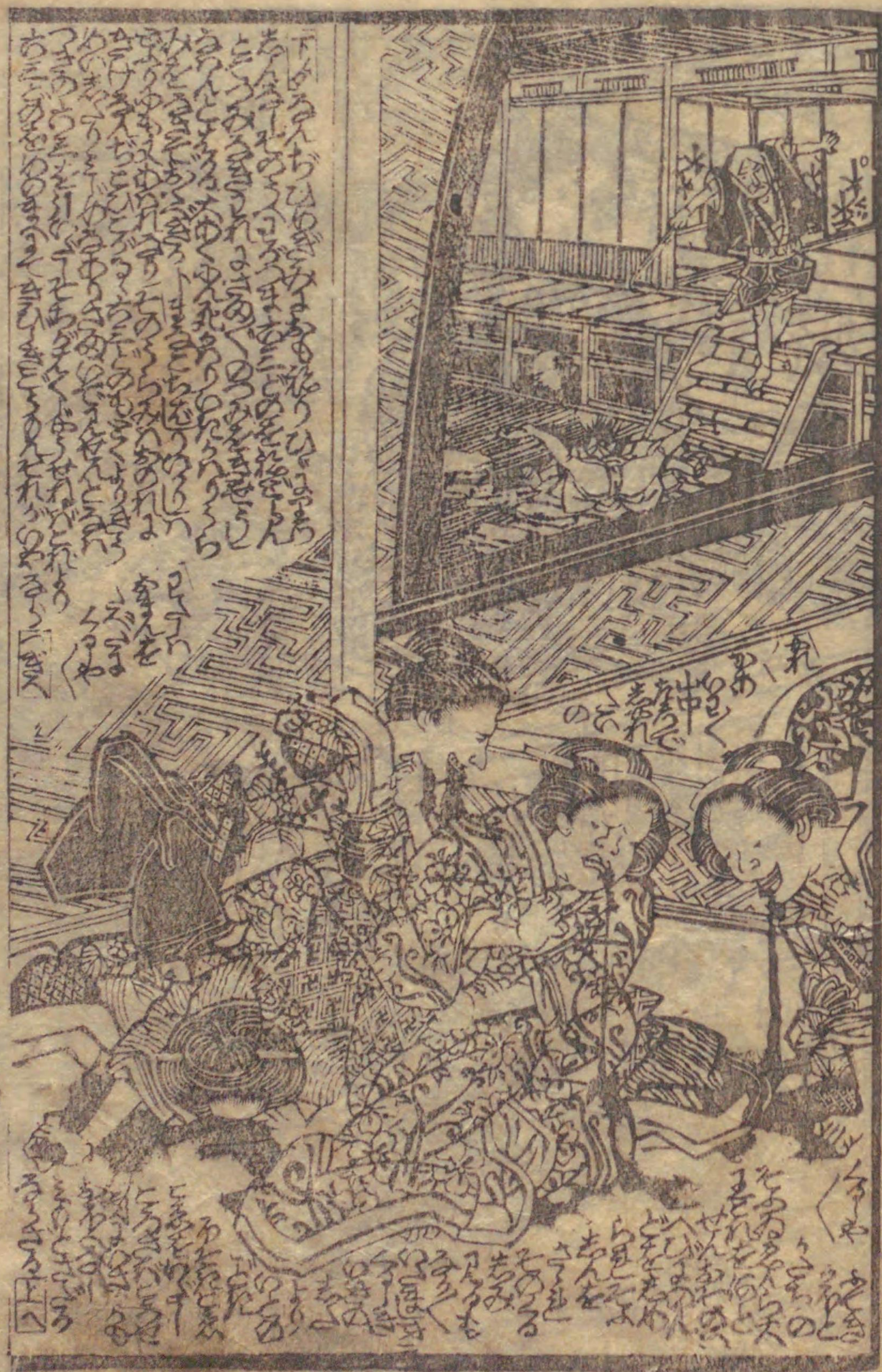
Handwritten text in vertical columns, likely a narrative or commentary, surrounding the illustration of a woman.

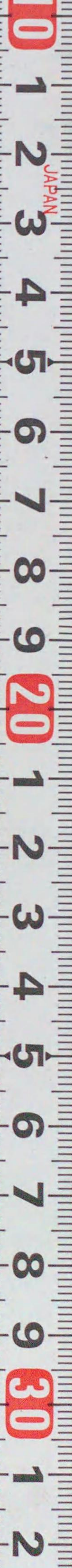
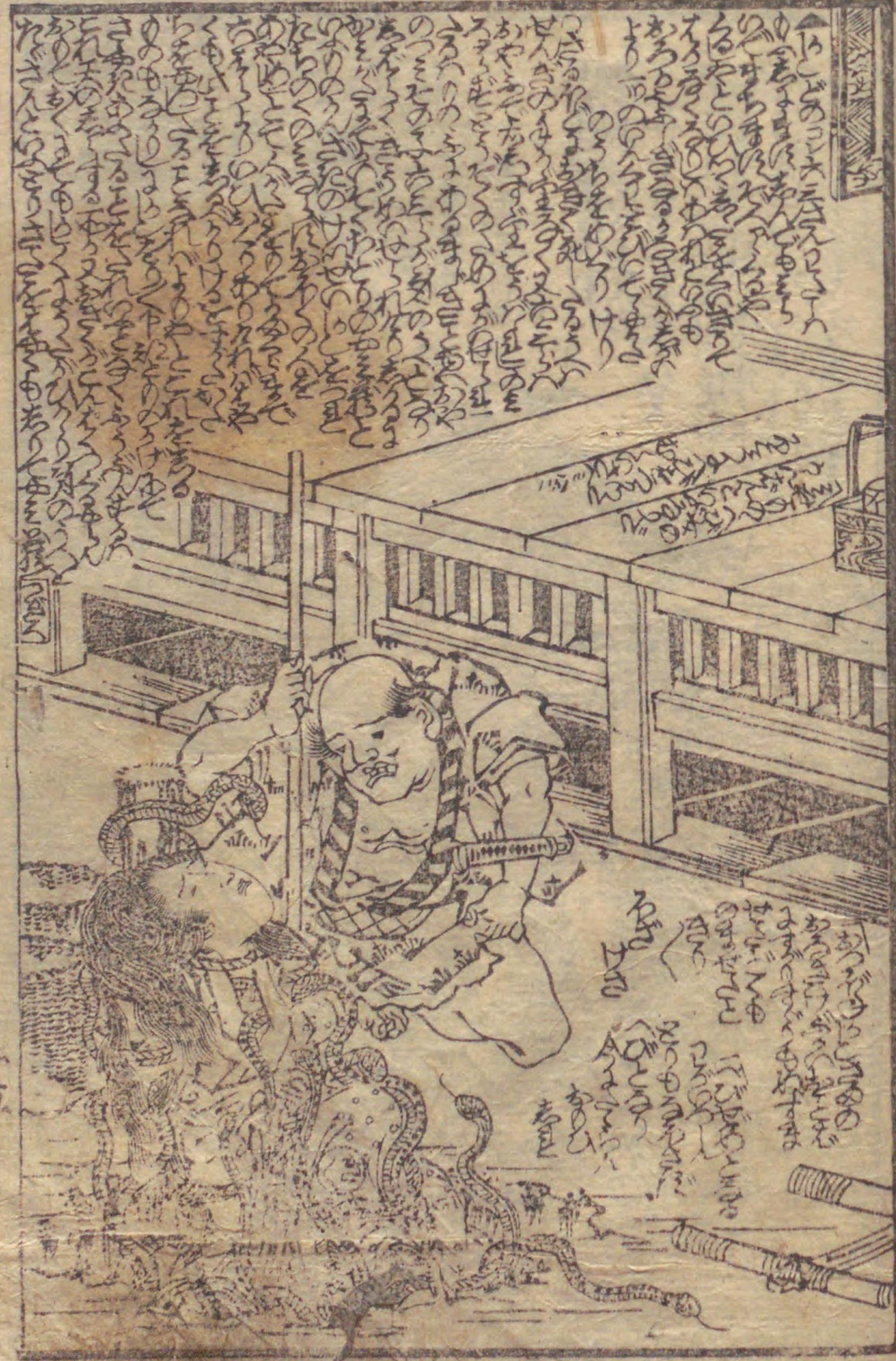


Handwritten text in vertical columns, continuing the narrative or commentary from the top illustration.











芝神
和泉屋市兵衛板

全部六冊
文政亥春

新編
繡像
稗史

後編



0 1 2 3 4 5 6 7 8 9 20 1 2 3 4 5 6 7 8 9 30 1 2

Handwritten text in a cursive style, likely a form of shorthand or a specific dialect, surrounding the illustration of a woman.



Handwritten text in a cursive style, surrounding the illustration of a seated man.





Handwritten text in a cursive style, likely a chapter introduction or a section header, located above the illustration on the left page.



Handwritten text in a cursive style, located above the illustration on the right page.

Handwritten text in a cursive style, located below the illustration on the right page.

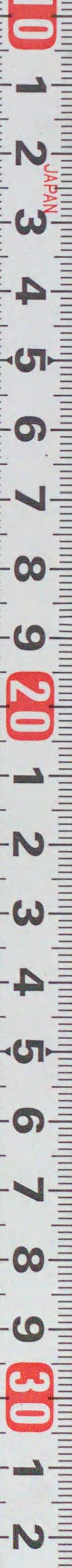


0 1 2 3 4 5 6 7 8 9 20 1 2 3 4 5 6 7 8 9 30 1 2





Handwritten text in a cursive script, likely a form of Japanese calligraphy, filling the pages around the illustration. The text is arranged in vertical columns, with some lines crossing the gutter between the two pages.



0 1 2 3 4 5 6 7 8 9 20 1 2 3 4 5 6 7 8 9 30 1 2



七

七

Handwritten Japanese text in vertical columns, likely a chapter introduction or commentary. The text is densely packed and covers most of the page area.



七五



Handwritten text on the right edge of the illustration, possibly a title or a specific note related to the scene.

七六



六卷



Handwritten Japanese text in vertical columns, likely a commentary or a list of items related to the illustration above.

三つ葉のつた

Handwritten Japanese text in vertical columns, located at the top of the right page.



Handwritten Japanese text in vertical columns, located at the bottom of the right page.



Handwritten Japanese text in vertical columns, likely a commentary or a story related to the illustration. The text is written in a cursive style (sōsho).



Handwritten Japanese text in vertical columns, likely a commentary or a story related to the illustration. The text is written in a cursive style (sōsho).

0 1 2 3 4 5 6 7 8 9 20 1 2 3 4 5 6 7 8 9 30 1 2



Handwritten text in a cursive Japanese style (sōsho) is written vertically on the right page, interspersed with the illustration. The text appears to be a commentary or a narrative related to the scene depicted.



かきまき

Handwritten text in a cursive Japanese style (sōsho) is written vertically on the left page, interspersed with the illustration. The text appears to be a commentary or a narrative related to the scene depicted.

0 1 2 3 4 5 6 7 8 9 20 1 2 3 4 5 6 7 8 9 30 1 2

Handwritten text in a cursive script, likely a form of shorthand or a specific dialect, surrounding the illustration on the left page.

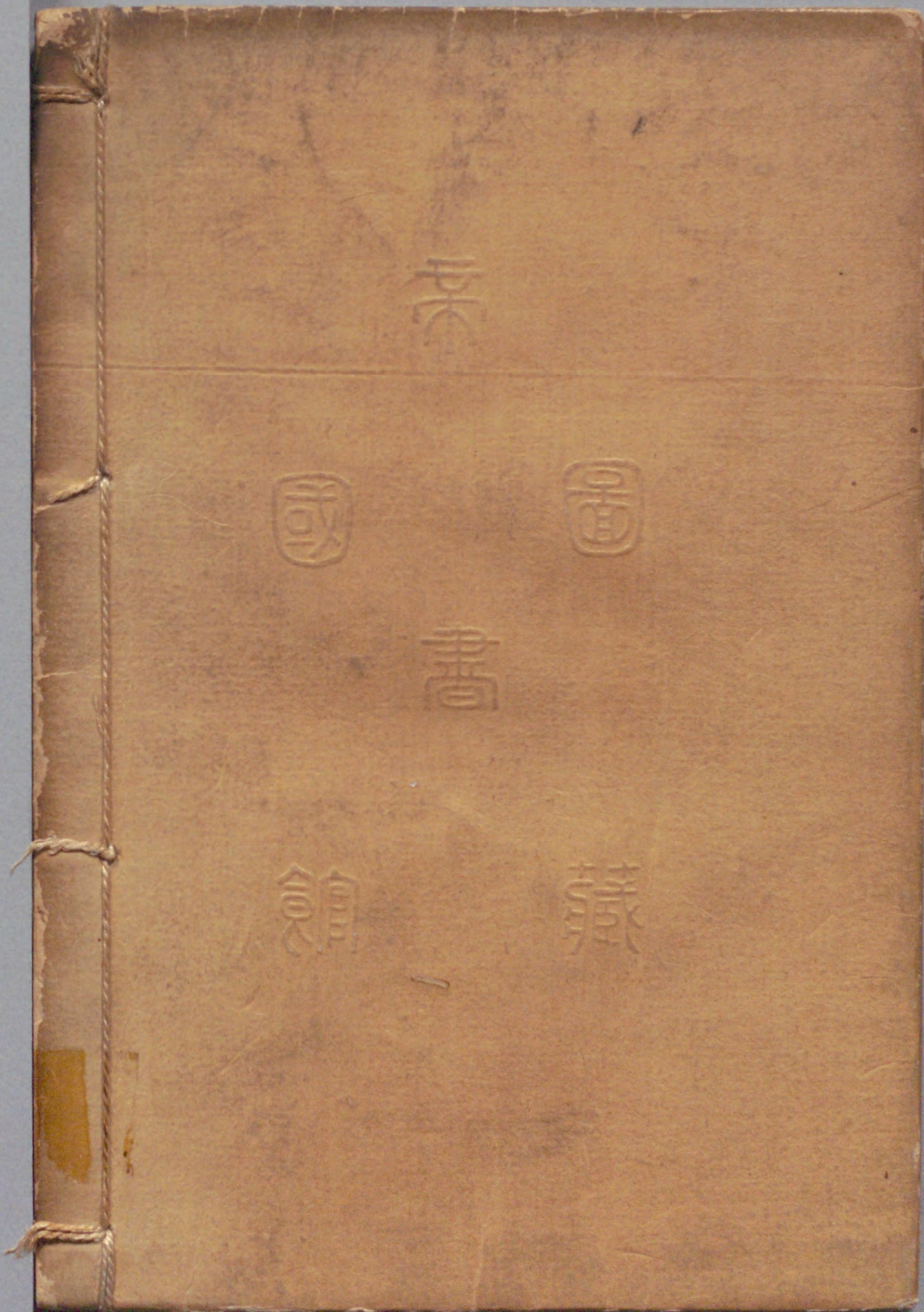


Handwritten text in a cursive script, likely a form of shorthand or a specific dialect, surrounding the illustration on the right page.



207
780





国立国会図書館 通人料理かしくの献立 前編3巻後編3巻 207-780

ガラス使用