

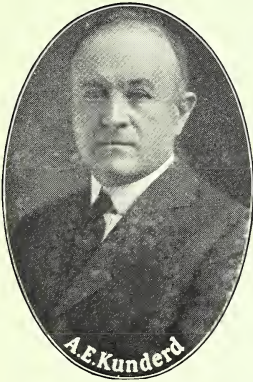
## **Historic, Archive Document**

Do not assume content reflects current scientific knowledge, policies, or practices.



62.25

LIBRARY  
RECEIVED  
★ JAN 14 1928 ★  
Library



Kunderd  
Select Peony List  
"and"  
Fall Catalog  
1927



THE  
"COL. LINDBERGH"

A. E. KUNDERD  
Goshen, Indiana

## Special Information and Terms

Prices quoted in this catalog include all packing and delivery charges and are the lowest possible consistent with good quality.

SHIPMENT will be made by Express, prepaid, or by Parcel Post as requested, or as seems to me most advisable.

ORDERS—You will want your Peonies just as early as they are ready to ship, and to avoid any possible delay you should place your order immediately upon receipt of this catalog. Orders will be filled in the order in which they are received as near as possible.

TERMS—**Cash with order.** Remittance to be made by P. O. Money Order, Express Money Order, Check or Bank Draft. We cannot accept C. O. D. Orders.

LABELING—All Peony and Iris roots will be properly labelled with wood labels wired securely to the roots.

GUARANTEE—I guarantee all Peony and Iris stock sent out to be true to name and will cheerfully replace any that proves to be otherwise, or refund the purchase price.

Peonies may not produce typical blooms until the second or third year. Many fine varieties throw single or semi-double flowers the first year, and if not properly cared for may do so the second year, so withhold your decision until you have seen normal blooms.

Iris prices quoted in this catalog will prevail until the issue of my new Fall Catalog 1928, which will be issued about August 1st each year. Orders for Iris will be accepted for Spring, Midsummer or Fall delivery.

Orders for Peonies will be accepted at any time to be filled for Fall or Spring delivery.

## PEONIES

Of all our many beautiful flowers none excel the Peony. This is perhaps our most desirable and showy Perennial. There are no glads when Peonies bloom, and no Peonies when the glads come into their splendid glory, so neither can rival the other. Each is a king in its season. The same can also be said of the Iris. In recent years many magnificent new varieties have been introduced, both by European and American originators. For about as long as I have been interested in the Gladiolus I have also been collecting and growing the best of the older and most of the desirable new varieties. During these years I have visited many of the foremost American Peony growers, such as T. C. Thurlows Sons, E. J. Shaylor, Good & Welch, Lee R. Bonnewitz, and many others, to study and buy their finest productions.

In addition, I have attended most of the American Peony Society's great annual shows where may be seen "the world's best" in prime condition. The past season I made two different trips and spent almost a week at Mr. A. M. Brand's Peony Farms where I saw this famous originator's great collection of the choicest productions from all over the world as well as his own very large and superior collection of "new creations." From this experience I have selected the following varieties as including most of the choicest, and an unexcelled collection. While a few of the varieties listed, such as Umbellata Rosea and Edulus Superba, are not rated among the highest scoring varieties, yet the must be included in any moderate sized collection as none of the other *Chinensis* Peonies can take their place among the early flowering varieties. There is at its season, no flowering plant of such gorgeous appearance as the Peony and no other flower is more easily grown and permanent. For landscape planting, or planting by themselves, either en masse or as single specimens, nothing can add more beauty and attractiveness to the home surroundings nor value to your lawns and gardens. Grow at least a few dozen or a dozen choice varieties and enjoy the beauty and pleasures which no other flower in its season can give. If you will study the collections offered in this catalog you will find many very attractive offers and no doubt something suited to your own particular purpose. The offer of large sized clumps, in many beautiful kinds which I made last season, is now discontinued.

This offer was made to reduce large stocks in order that my own personal time might be devoted to the "creation" of the Gladiolus, and a few other subjects to which I wanted to devote my attention. I have now, however, an efficient staff of assistants whom I am certain will be able to give you every assistance and satisfactory service, including any helpful advice as to your possible needs in laying out of plans, planting, etc. If you are a beginner and wish our aid in making selections, laying out of your grounds, or any other help in beginning to build up a fine collection of Peonies, we are at your service free of charge.



The Gladiolus  
Girls ~  
1914



Marie Kunderd



Pauline Kunderd

As  
they are  
to-day

(See opposite page  
for New Peonies  
named for them.)

## A FEW CHOICE KUNDERD PEONY SEEDLINGS OFFERED HERE FOR THE FIRST TIME

This year I am introducing a few distinct and outstanding new Peonies of my own origin which I believe have merit and which I believe will meet the approval of my patrons. As I have grown a rather good sized stock of the first two of the varieties named below, I decided to offer them at a very moderate price in order to get them more widely known and to enable my friends to buy these two beautiful varieties as soon as possible. I believe they are equal in beauty and attractiveness to many recent introductions offered at much higher prices.

### MARIE KUNDERD

An unusual form and type of peony. Flowers large and of a wide and deep cup form, much like a high built double water lily. Petals loosely placed but full double to the center showing no seed carpels nor pollen anthers. Color pure white when well established but like most peonies, requires three to four years to bring to full perfection and must be well grown to develop its beauty of size and form. Plant and stem of medium height, buds beautifully pointed like rose buds, and comes into bloom rather late. If you will grow this peony well I believe you will be very highly pleased with this very unusual and distinct new variety. Each only \$20.00.

### PAULINE KUNDERD

Another very unusual and beautiful Peony. Plant of medium height and comes into bloom early midseason. Flowers full double showing no carpels nor pollen. Color of a very delicate flesh pink on a white ground and has a distinct crown of lightly tipped pink petals about midway between the center and the outer edge of the blossom. Holds its color unusually well in the sun. Does not develop an unsightly crown in the center as do a number of otherwise fine peonies, and in addition has an odor equal to the choicest of roses. Lateral buds develop very beautiful long stemmed, rose formed flowers of great attraction. Mr. Lee R. Bonnewitz, Ex-President of the American Peony Society, considers this peony entitled to a rating of 90% to 95%.

Each \$20.00. This and the above, one fine plant each, for only \$35.00.

### COL. LINDBERGH

An early and beautiful deep dark red of elegant form and loosely double. The form of the main and lateral flowers is similar to a wide and shapely water lily and on young plants shows an attractive mingling of golden anthers. As the plants become older the blooms become more fully double and of distinct and beautiful form. A rich deep rose red in color and a very showy and beautiful cut flower or landscape variety. Each \$20.00. The above three varieties, one fine plant each for \$50.00.

### EARLY JUNE

Here is a Peony in color and blooming period about midway between Umbellata Rosea and Edulis Superba, "the Decoration Day Peony." It generally comes into bloom with Umbellata Rosea making it of great value as a first early flowering variety. A strong vigorous grower above medium height, which supports its large and attractive blooms much better than do most other varieties. No doubt will become very valuable as a first early Peony and also for its attractive appearance as a landscape variety. Color, a very distinct and attractive rose pink. Each \$10.00. One strong plant each of the above four new varieties for \$55.00.

### DISTINCTION

A tall strong plant with a very attractive large single flower of rich deep showy purple red. A variety of striking appearance which stands out very clearly among hundreds of other kinds. I believe this will become very popular among the single deep red varieties both for the garden and landscape purposes. Each only \$3.00. One strong plant of each of the above five distinct new Peonies for \$57.00.

### BLUSHES OF CREAM

Blushes of Cream (not pink), describes this very beautiful seedling. It is of the flat Rose type with considerable yellow anthers interspersed among the petals, especially towards the center. The deep cream or softest sulphur yellow, makes this flower of great beauty and refined appearance. Medium late. Only a few advance orders can be booked now for delivery fall 1928. Each \$20.00.

### GOLDEN HEARTS—(Jap)

A beautiful Japanese variety with fine wide blushed guard petals and a wonderful golden yellow center. A magnificent variety. Each \$20.00, but not to be delivered before fall of 1928. Only a few advance orders can be booked this season.

## INTRODUCING A NEW RACE IN THE PEONY WORLD

A coming new and extraordinary race of distinct and early flowering Peonies.

With this announcement I am introducing to the floral world a new and altogether different race of early flowering Peonies.

For about eighteen years now I have been collecting all the older and recent early flowering Chinese Peonies, both doubles and singles, and crossing and recrossing these among themselves in order to obtain as many early flowering varieties as possible. With these as a foundation, I began crossing on the old red Peony, *Off. Rubra*, etc., of our Grandmother's gardens (and Grandfather's, too), in the hope of producing much earlier flowers, both doubles and singles, for our northern climate, and for Memorial Day purposes.

How well I have succeeded may be realized from reading the letter following, from Dr. J. H. Neely, the foremost originator of Oriental Poppies and one of the closest students of plant life and the laws of hybridization, and the science of color in flowers, in America. It is only rarely that the flower loving public is enabled to come into the possession of something new and entirely distinct, something epoch making so to say, such as was my introduction of the Ruffled Gladiolus. In producing this new and early flowering strain of Peonies I believe I have succeeded in "creating" as marvelous an achievement as was my Ruffled Gladiolus and one that is destined to become as famous as have these Ruffled Gladioli in the floral world. Beautiful, perfect doubles, as well as marvelously formed singles now appear in this extraordinary new race. Of these it will not be possible as yet to offer only about two of the single flowering kinds in only a few plants of each, both Poppy Reds, at \$25.00 each, for delivery fall of 1928. Later on I shall be able to offer from time to time, still other, both double and single varieties in a number of beautiful colors and shades. Some of the singles of this new race will easily equal in regal beauty and marvelous coloring the choicest of Tree Peonies and Oriental Poppies. I believe the appearance of this new race of Peonies will prove another "Epoch making event in Horticulture" and afford the gardening public a "new creation" unsurpassed by any other flower.

*A. E. Kunderd.*

Mr. A. E. Kunderd, Goshen, Indiana.

Paulding, Ohio, June 3, 1927

Dear Mr. Kunderd—The Peony bloom left by Mr. Ream is still in fair condition. Was in fine shape when I reached Paulding from Springfield, Wednesday noon. I was amazed and delighted with the flower. I have been telling Mr. Ream you would find your flowers either *Officinalis* or else *Chinensis* without a blend. That has been the experience of other breeders, but in this case the foliage is distinctly *Officinalis*, while the petals are anything else. Even the Carpels or seed carriers are true to the *Officinalis* Type.

Having seen this bloom and studying it carefully I take back all my opinions and admit that you have not only succeeded, but have opened up a new field of adventure that leads, God only knows where. With this and your other half bloods worked back and forth new colors will doubtless be evolved as well as an early flowering habit now unknown.

Very truly yours,

J. H. NEELEY



# PEONIES

## GENERAL LIST OF VARIETIES

**ACHILLE** (Calot)—A delicate flesh color, fading to pure white. Early and very fragrant. Rose type. A very fine variety. Worthy of a place in any garden. Each **.75**

**AKSARBEN**—An extra fine, tall, deep double red. Very good. Much like Karl Rosenfeld. Each **\$1.00**

**ALBERT CROUSSE** (Crousse)—Large full convex blooms of soft sea shell pink; perfect form. The petals are so compact and perfectly arranged, that it is one of the notable and outstanding characteristics of this flower. It is a tall, erect plant, that blooms freely late in the season and is very fragrant. The blooms are extra large and last well, making it splendid both as a cut-flower and as a landscape variety. This variety is one of those varieties which no description can do justice. It has an added grace that must be seen to be admired. Each **\$1.00**

**AVALANCHE** (Crousse)—Very large, compact, globular, rose type, milkwhite, shaded ivory, wide center petals, tinged lilac, edged with a minute line of carmine. Fragrant. Very strong, vigorous, tall grower, very free bloomer. Mid-season. Unsurpassed by any other white peony. Each **\$1.00**

**BARONESS SCHROEDER** (Kelway)—This is one of the best of the Kelway productions. It is usually classed as a pure white, but it quite often opens a soft, delicate baby-pink fading to white as the flower becomes fully developed. It is a large, full globular flower of the rose type. The petals have wonderful substance and fine form. It has a very sweet rose fragrance that is most pleasing. The plant is of strong upright growth with a distinctive light green foliage. The well formed buds as well as the profuse blooms that open in late mid-season are carried up well on good strong stems. The form and quality of this flower are about as near perfection as could be desired. It is truly one of the Aristocrats of the Peony world and few good judges would select a list of the best dozen varieties without including Baroness Schroeder. Each **\$1.50**

**CANDIDISSIMA** (Calot)—Full, double, rose type. Pure white, with sulphur center; carpelodes in center tipped green. Fragrant. Tall, vigorous, free bloomer. Early. Each **.75**

**CHAS. McKELLIP** (Brand)—This is a large loosely built semi-rose type flower of a rich crimson red color. The irregular rich crimson petals of the center, are mingled with golden stamens and surrounded with a row of silken guard petals. It has a charm peculiarly its own. A splendid mid-season red. Each **\$1.50**

**CHERRY HILL** (Thurlow)—Semi-rose type; Early. A very dark deep garnet color unlike any other that we have seen. This is a tall growing variety that stands out distinct in any collection. The flowers are medium large and are borne on long stems which carry up well and the flowers have a glossy, silken sheen that makes it very beautiful. This variety is very popular and in great demand. My stock is limited. Each **\$5.00**

**CHESTINE GOWDY** (Brand)—This is a striking specimen of the cone shaped peony. The broad outer petals are silvery pink. These enclose a zone of fine irregular shaped closely set petals of a deep rich cream, which in turn surround a prominent cone of broad pink petals, splashed and tipped with crimson. Its varied coloring has repeatedly caused it to be singled out for special admiration from a group of the finest varieties. This is a late variety with a delicate fragrance. (Originators description). Each **\$1.50**

**COURONNE D'OR** (Calot)—Large, flat, semi-rose type. Pure white, with a ring of yellow stamens around a tuft of center petals, tipped carmine. Medium tall, splendid grower, free bloomer. Late. One of the best white varieties. Each **\$1.00**

**DUCHESS DeNeMOURS** (Calot)—A medium early white of the Crown type that opens in a globular cup form that is very distinct and beautiful. The color is a clear white, with a collar of creamy white petals with a greenish reflex that lights up the entire flower; gradually changes to a pure white without spot or blemish. It is a vigorous bloomer and fragrant. In all of the Peonies there is none so exquisitely chaste and beautiful as this variety in a half open bud state, in growth it is entirely distinct, being upright and branching. Another one of the older varieties which has stood the test of time and is yet without a peer in its class. Each **\$1.00**

**EDULIS SUPERBA** (Lemoine)—Large, loose, flat crown. Bright, mauve-pink, collar mixed with lilac. Fragrant. Extra fine, Early. Strong upright, free bloomer. One of the best commercial pinks for Decoration Day. Each, **.50**

**ENCHANTRESS** (Lemoine)—A very large, rose type bloom having globular, compact form. Very late and delightfully fragrant. Color a creamy white, guards and central petals flecked crimson. This flower has a greenish reflex that is very pleasing. It is a tall erect growing plant, very vigorous. Was awarded the prize for the best six blooms in the show at the National Peony Show at DesMoines. A prize that only a real Peony can win. Each **\$5.00**

**ETTA** (Terry)—Rose type. Late. It is a uniform shade of hydrangea-pink. Very fragrant. A vigorous grower of medium height. Blooms at the same time as Livingstone. Each **\$1.50**

**EUGENE VERDIER** (Calot)—This is a very large flower of the Crown type, of a very delicate hydrangea-pink. Outer guard petals lilac-white. Very erect with a medium height, and having good strong stems; a free bloomer and very fragrant. A fine variety. Each **\$2.00**

**EUGENIE VERDIER** (Calot)—Large, medium compact, flat, semi-rose type. Pale hydrangea-pink, collar lighter, center deeper flecked crimson. Fragrant. Tall, medium, erect, free bloomer. Mid-season. Very distinct from Eugene Verdier with which it is often confused. Extra fine variety. Each **\$1.00**

**FELIX CROUSSE** (Crousse)—Rose type. Late midseason. A large clear brilliant red that has stood the test of years and is still one of the foremost Peonies grown, both for garden plantings and for commercial use. The guard petals are quite prominent and when the central petals are fully developed it might almost be classed as a Bomb type. Very popular. Each \$1.00

**FESTIVA** (Donkalaer)—Large, full, double, rose type. Creamy white with crimson spots in the center. Fragrant. Dwarf grower. Late bloomer. Often sold as Festiva Maxima, and sometimes as Edulis Alba. Each \$1.00

**FESTIVA MAXIMA** (Meillez)—A rose type. Early. A pure white with center petals flecked with carmine. This is no doubt the most popular Peony in the world today. A well established plant of this variety standing four and a half feet high and literally covered with a wealth of bloom spreading over a circle eight feet in diameter and the blooms many of them eight to ten inches in diameter is a rare sight to behold, yet this is within the range of possibilities with this wonderful variety and we know of no other that can excel it in all of the points of excellence. This variety would sell readily at \$50 each if the stock was not so plentiful. Choose this one first then add such other varieties as you can use later. Good Strong Div. \$1.00

**FLORAL TREASURE** (Rosenfield)—Syn. for Delicatissima. Early mid-season; Rose type. Very large full flowers of clear even pink shading lighter toward the center; a very delicate color. Very fragrant and a good grower having good long stems which bear up the big handsome blooms almost seven inches across. Very fine for cut flowers. Each .75

**FRANCIS WILLARD** (Brand)—A very large Peony that opens in a perfectly formed semi-rose type flower. Petals of varying sizes form a very large rounded flower, often having a raised cup shaped center enclosing golden stamens; as the petals grow they develop a cup shaped center in which occasional petals are marked with carmine. On first opening the flower is suffused with a delicate blush and changes to a creamy white. The plant itself is ideal of strong healthy growth having sturdy stems and a heavy dark green foliage. It is a late midseason variety that is very fine. Although delicate in appearance it is of good substance and an excellent cut flower. One of the world's very best Peonies. Each \$2.50

**GENERAL CAVAINAC** (Calot)—Very large, globular, compact, semi-rose type. Light violet-rose, edged lighter, center splashed crimson. Tall, erect, free bloomer. Late. Each .75

**GENERAL HOOKER** (Terry)—Large, compact, flat, semi-rose type. Uniform dark Tyrian rose, slightly tipped silver. Medium tall, free bloomer. Mid-season. Very good. Each \$1.50

**GEORGIANA SHAYLOR** (Shaylor)—Rose type; midseason. Very large bloom with wide petals. A flesh pink shading to almost white in the center. Very good in every way. Each \$5.00

**GERMAINE BIGOT** (Dessert)—A pale lilac rose with lighter flesh colored tints in the

center. Petals broad and the guards and center splashed crimson. Growth strong erect of medium height. A very fine variety. Each \$1.50

**GIGANTEA** (Calot) (Syn. Lamartine)—Very large rose type. Color a delicate rose pink center shaded darker, guards and collar tipped with white. A tall free bloomer having a spicy fragrance. Medium. Early. Very fine. Each \$1.00

**GLOIRE DE CHAS. GOMBAULT** (Gombault)—Crown type. Midseason. Medium sized globular flowers produced in the greatest profusion, every stem bearing one or more tri-colored blooms. Guards and crown a light rose flaked with rose red. A collar of creamy white petals widening toward the center forming the crown. This flower has the odor of a lemon. This was one of the most popular varieties in my fields during the past season. Very unique and beautiful. Each \$1.00

**GOLDEN HARVEST** (Rosenfield)—Bomb type. Mid-season. A very striking variety producing large tri-colored blooms. The guard petals are blush pink, the center of the flower is of a creamy white overlaid and tipped with carmine. The combination of colors that make up the body of this flower may be said to include cream, gold, white, pink, salmon, peach and apricot, the total effect of the flower being a creamy pink. Strong, but very pleasing fragrance. Each .75

**GRACE D. BRYAN** (Rosenfield)—Rose type. Very late; a very large brilliant pink; very double and fragrant. A strong grower and a fine free bloomer. Extra fine. Each \$1.50

**GRANDIFLORA** (Richardson)—Rose type; very late; This is a very large late pink that one must have to prolong the season. Color a bright shell pink overlaid with a delicate and salmon pink that is very pleasing. It is fragrant and fine. This is decidedly the best in its class. The plant is tall, erect and a very vigorous grower. Each \$1.50

**GROVER CLEVELAND** (Terry)—Rose type; late. Very large and full. Dark crimson red. A strong and vigorous grower. Extra. One of Terry's best. One of the very best late reds. Each \$1.50

**HENRY AVERY** (Brand)—The plant is of medium height and mid-season in blooming; flowers large. General color effect, pinkish creamy white. Guard petals are large and prominent enclosing a large ball of large rose type petals of the same color as the guards. Between the guards and the center petals is a collar of the deep bright yellow petals. This collar gives the flower a very striking appearance as the petals are a real deep yellow. Fragrance very delicate and distinguished. If you are looking for something very refined you will not be disappointed with Henry Avery. Each \$7.00

**JAMES KELWAY** (Kelway)—Semi-rose type. Early midseason. Opens a dainty flesh pink fading to white, and the golden stamens almost concealed in the large rounded petals of translucent texture reflect a golden glow that is very effective. A tall vigorous plant that produces flowers of immense size. In addition to its other charms it is surpassingly fragrant which places it in the front rank of desirable peonies. One of the best. Each \$1.50

**JEANNOT** (Dessert)—One of the very finest of the recent introductions. The high built globular rose type flower with a cupped center is a delicate shade of flesh pink with a very delicate suffusion of lavender shading to a salmon pink at base of petals. Plant is vigorous and upright in growth with slender but strong stems. Blooms late and is one of the most delicately colored peonies ever produced. Very choice.  
Each \$12.00

**JOHN M. GOOD** (Good & Welch) (1921)—A late midseason variety that produces wonderful large full flowers of purest white. The blooms are a true rose type with large imbricated petals that build up into a symmetrical globular form that is almost perfect. It has ideal habits, tall and vigorous and very upright. The center stems grow taller than the outer ones, forming a dome shaped plant as perfect as the blooms themselves. The stems are strong and support the immense large blooms perfectly. The foliage is a distinctive light green in color. Like many other fine varieties this variety is not at its best until the third or fourth year. This variety was selected from a number of choice seedlings produced by the late John M. Good as his masterpiece, and was given the honor to bear the name of one of the best judges of Peonies that ever lived. Every Peony connoisseur in the country will want this one. Each \$100.00

**JUDGE BERRY** (Brand)—This very large flower is a semi-rose type and the petals are long and open back flat forming a perfect disc-like flower. Its season is early mid-season. On opening, the color is a soft light pink changing to white and white flushed pink making a delicate pink and white effect. It is a medium tall variety, and a free and reliable bloomer. One of the most desirable peonies. Each \$5.00

**KARL ROSENFELD** (Rosenfeld)—A large semi-rose type flower of a rich velvety crimson; has a perfect ball-like form when fully open. The plant is a tall, strong, upright grower and a very prolific bloomer. The foliage is a rich dark green and very heavy. Blooms in midseason. A splendid variety that should be in any first class collection. Each \$1.00

**KELWAYS GLORIOUS** (Kelway)—Rating 9.8. The blooms are a very large full rose-type. They open a very delicate flesh pink and change to a very pure iridescent white. The guard petals are tinted pink and slightly streaked with carmine on the back. The central petals are long and lacinated in well developed blooms forming a high globular flower with a cupped center. Plant is medium tall, upright in growth, with stems that support gracefully the mammoth large blooms. A good landscape plant that blooms in mid-season. It is a free and reliable bloomer and usually blooms on young plants. Undoubtedly one of the best of many good varieties from Kelway.  
Each \$18.00

**KELWAYS QUEEN** (Kelway)—A large globular rose-type flower similar in form to Solange with incurved petals in true rose form. Color, a deep flesh pink with the center petals sometimes flaked carmine and a tinting of carmine, deep down in the petals that live up the bloom wonderfully. Mid-season. Very fragrant. The plant is a strong grower of medium height and upright with distinctive stems and broad rounded foliage of a characteristic green

color. The plant is free flowering and each true stem produces a flower that opens up well. A very fine variety. Each \$12.50

**LA COQUETTE** (Crousse) Large, globular high crown. Guards and crown light pink, collar rose-white, center flecked carmine. Strong, erect, medium height, free bloomer. Fragrant. Mid-season. Each \$1.00

**LADY ALEXANDRA DUFF** (Kelway)—Outer petals pale rose, gradually shading lighter toward the center to a rosy white, some carmine markings; semi-rose type. Probably the most famous peony in the world, and for years sold at \$25.00 a root; it is excellent for landscape and cut flower purposes. The main blooms are double, and the side blooms are usually single or semi-double, and somewhat resemble delicate pink water lilies. A very choice and beautiful peony. Each \$4.00

**LA FEE** (Lemoine)—A very large compact, globular crown type bloom that is delightfully colored, airy, and beautiful. The flower opens in a globular rose-type form with guards and center of soft mauve-rose, then develops into a crown type showing a narrow collar of lighter petals. It is very fragrant. The plant is tall, vigorous and has long willow stems that support the flowers with a plume like air. It is well named La Fee (The Fairy), and is one of the most graceful and refined flowers imaginable. Each \$10.00

**LA PERLE** (Crousse)—Rose type. Mid-season. Very large compact globular flowers. Color white overlaid with lilac with a blushed white or pearl like center that remains in the bud form until the flower is well developed. An upright grower and a free bloomer. It is very fragrant and is one of the very good peonies that has not been given the prominence that it merits.  
Each \$1.00

**LA TULIPE** (Calot)—Semi-rose type. Late mid-season. Enormous large flowers of a delicate blush-white shading to ivory-white with red marking on the guard petals which make the buds look like Bizarre tulips before they open. C. S. Harrison says, "This is one of the finest. First, a ball interlaced with green, red and light pink; finally it opens a globe of softest blush, with streaks of carmine. A glorious flower. It seems to sit in a chalice of veined marble, emitting a delightful fragrance. Gradually it fades to a purest white and holds its freshness and beauty until the petals fall." A splendid keeper, and a tall vigorous grower. Each \$1.00

**LE CYGNE** (Lemoine)—Rose type. Mid-season. Sturdy growing pure white. This variety was appropriately named "The Swan". The buds are of a creamy white and as the flowers open they have a greenish luminosity toward the center which changes to a pure white as the flower develops. The flower is a perfect rose type. Very large globular flowers with broad imbricated petals, that are shorter toward the center of the flower. The plant is of ideal growth, medium tall and with good stiff, rigid stems. Foliage a very rich dark green. Very fragrant and deserving the place that it holds at the head of the list as rated by the members of the American Peony Society, as being the most perfect plant and flower of all of the hundreds of varieties which they listed in their symposium. 9.9 Each \$10.00

**LIVINGSTONE** (Crousse)—Rose type. Late. Very large compact flower. The petals are imbricated, uniform and the color is a lilac-rose with silvery tips. The center petals are flecked with carmine. The plant growth is vigorous and of medium height. A free bloomer and a splendid cut flower variety. One of the best of the late blooming varieties. Each **\$1.00**

**LONGFELLOW** (Brand)—A bright crimson with a cherry tone and without the violet hues which are sometimes objectionable. This is probably the brightest of all of the red Peonies and should be in every first class collection. The flower is a compact semi-rose type of medium size; it holds its color well in the sun and is without a peer in its class. A tall vigorous growing plant blooming in a late mid-season. This is the one bright red that is sure to attract attention, and which every one will want. Each **\$4.00**

**LORA DEXHEIMER** (Brand)—Semi rose type. Early mid-season. Color intense flaming crimson shading darker at base of petals. This is another of Brand's good reds, and is a fit companion to Longfellow and Mary Brand. Each **\$2.00**

**LORD KITCHENER** (Renault)—A very large loose bomb-type flower of a bright cherry red. The broad guard petals are prominent and reflexed. The center petalage is typical bomb-type. A very free bloomer, on a plant of medium tall growth and good habits. As a landscape plant it is a brilliant and pleasing variety, blooming in early mid-season and lasts well as a cut flower. Very popular. Each **\$2.00**

**LOUIS VAN HOUTTE** (Calot)—A very fine shapely bloom of semi-rose type. Medium to large sized flowers. Color a bright violaceous-red of dazzling effect. An old favorite that is still worthy of a place in any collection. Each **\$1.00**

**LOVELINESS** (Hollis)—Large flat rose type blooms. Late. Opens a delicate hydrangea pink changing to a lilac or blushed white when fully open. Fragrant. The growth is medium tall and upright with good strong stems. A very delicate and beautiful flower that has been well named. Blooms at about the same time as Tourangelle and Jeannot and is a suitable companion for them in delicate coloring. One of the finest. Each **\$3.00**

**MADAME CALOT** (Meillez)—Rose type. Early. Large convex bloom of hydrangea pink, center shaded slightly darker with a sulphur tint in the collar. This variety has many good qualities; first, it blooms early; it blooms every year and never fails; it produces more flowers than any other variety and is the most fragrant. An old variety that should be in every collection. Each **\$1.00**

**MADAME DUCEL** (Mechin)—A typical bomb-type flower of perfect form coming in mid-season. The guard petals are broad and prominent surmounted by a chrysanthemum like center of narrow, compact, incurved petals. The whole flower is a light mauve-rose color with a silvery reflex. A vigorous upright grower of medium height, and having good strong stems, is very prolific. The flowers last well making it a splendid variety for landscape effect, also for cut flowers. Each **\$1.00**

**MADAME DE VERNEVILLE** (Crousse)—An early white with a very sweet fragrance, of the bomb type. I can best describe this variety by telling you that it is the same color as Festiva Maxima and has the form of Monsieur Jules Elie, combining the qualities of two of the best peonies in the world. What more need be said? Plant has plenty of vigor but grows only to medium height. Each **\$1.50**

**MADAME EMILE GALLE** (Crousse)—Rose type, late mid-season, large flat open flowers. The color is about the daintiest color imaginable. The petals are imbricated and silken. Color a sea-shell pink with touches of heliotrope and lavender. This is probably the most etherially beautiful of all peonies. Not a new one but it is scarce and rare. Visitors always rave over this variety. It is a medium tall and strong grower with good stems and a very reliable bloomer. Each **\$1.00**

**MADAME EMILE LEMOINE** (Lemoine)—A very large flower having large flat saucer-shaped blooms as large as a dinner plate that are produced in such profusion that they almost hide the plant from view. Color on first opening a glossy-white overlaid with a sheen of tender satiny pink covered with minute lilac dots, becoming almost pure white with age. M. Lemoine must have thought this was his masterpiece, else he would not have named it for his wife. It is one of the most popular flowers in any collection. A strong grower, a free bloomer, and fragrant. Each **\$1.50**

**MADAME JULES DESSERT** (Dessert)—A very large flower having large saucer shaped blooms as large as a dinner plate. In general effect the color is a delicate flesh pink shading to a creamy white, with golden stamens mingled with the large broad, imbricated petals in a manner that is very hard to describe, but which is very pleasing. This variety has a charm that must be seen to be appreciated. A sturdy plant, but a slow grower. The price is not too high, and it is not likely to be cheaper for a long time. Each **\$3.00**

**MADAME LEBON** (Calot)—Very large, compact, globular, rose type. Cherry-pink to aniline-red. Fragrant. Buds very tight, open slowly; tall, strong grower. Late. Each **\$1.00**

**Mlle. LEONIE CALOT** (Calot)—A late, mid-season variety, perfect rose type. Color a delicate rose-white with soft lilac pink center and specked with heliotrope-pink. A very delicate and charming color. There is nothing to which we can compare the beauty of this most delicate and refined flower. Extra fine. Each **\$1.00**

**MAGNIFICENT** (Brand)—Perfectly formed, semi-rose type flower of large size. The petals are broad and more symmetrically placed in the true rose form than most peonies. The color is a rich dark velvety red, with a bluish tone that makes it very distinctive. It is a profuse and reliable bloomer on a plant of medium height and faultless habits. A strikingly distinct and beautiful red, blooming in mid-season. Each **\$4.00**

**MARIE CROUSSE** (Crousse)—A large bomb-type flower, mid-season, enormous, very full globular flowers on long stems. Color a soft salmon pink, shaded a glossy

satiny lilac. A very fresh and beautiful color. A sort that is very rare and in the voting contest it stood nine out of a possible ten. Very choice. Each \$2.00

**MARGUERITE GERRARD** (Crousse)—This flower opens in semi-rose type form with broad petals blooming in clusters. Color, a delicate hydrangea-pink, changing as the flower ages to a creamy white. Many of the central petals have small dark flecks of dark carmine on the tips. Fragrant and a free bloomer in late mid-season, a strong grower and of medium height and of a spreading habit. Splendid for landscape planting. Each \$1.00

**MARTHA BULLOCK** (Brand)—A prize peony named for Ex. President Roosevelt's mother. It has mammoth cup shaped blooms often nine to twelve inches in diameter. The largest of all of the good peonies. In color it is a silvery shell-pink at the edges shading to a deep rose pink in the center, making a color effect that is very beautiful, but hard to describe. The plant itself seems to realize the beauty of its flowers, since it puts forth a strong stiff stem which supports these large mammoth blooms proudly above the foliage. A fine landscape variety and one of the greatest show flowers. A well grown vase of these will attract attention in any show. Stock of this variety is not plentiful. Each \$10.00

**MARY BRAND** (Brand)—A vivid crimson with a silken sheen that gives it a wonderful brilliance. It is a semi-rose type, blooming in mid-season. The golden stamens are scattered through the center of irregularly fringed petals. The description of an individual flower gives but a slight idea of the beauty of a growing plant. The single flowers are often immense; many of the strong stems bear three or four large blossoms. The plant which is of medium height is often a mass of crimson blood probably the best dark red peony in cultivation for lasting effect both as a cut flower and in the garden. Very fragrant and usually blooms the first year. Each \$3.00

**MILTON HILL** (Richardson)—This is a very late bloomer and one of the finest peonies. Its flowers are very large, delicately colored and of the finest texture. The broad petals are slightly incurved and open in globular or cupped form, developing to a large flat flower of perfect rose shape. It is a pale lilac rose with opalescent tints of a delicate salmon pink. It might well be described as a delicate flesh color. The plant is strong medium height with sturdy stems and is very desirable for either landscape or garden. A very delicate, beautiful and refined flower. Should be in every first class collection. Each \$5.00

**MONSIEUR DUPONT** (Calot)—Semi-rose type, mid-season, a very large well built flower with a cup shaped bloom of ivory white, central petals splashed with huge drops of carmine and lit up with golden stamens at the base of the petals. The carmine blotches on Monsieur Dupont are larger and more showy than on any other variety where such spots occur. You may add to the six points of excellence which this flower possess, the indefinable point of charm which but few flowers possess. Should be in every well selected collection. Each \$1.00

**MONSIEUR JULES ELIE** (Crousse)—Next to Festiva Maxima, this is the highest rated of all of the older varieties. It may well be called the King of all pink peonies. It is truly a sensational flower. Its enormous very full flowers are of a well developed bomb type. The guards are large and prominent and the center is an immense ball of imbricated petals, incurved like a huge chrysanthemum. In color it is a clear, pale lilac rose with a silvery sheen. An early bloomer with a pleasing fragrance. On young and well established plants it will produce blooms nine inches in diameter and as much as ten inches in height. A strong vigorous grower and is one that should be in every collection. Each \$1.00

**MONSIEUR MARTIN CAHUSAC** (Dessert) A large massive well formed flower of a semi-rose type, very full petalage, and is outstanding on account of its rich, dark coloring and its distinctive foliage. A perfectly full flower of a dark purple garnet with an almost black reflex showing a few bright, golden stamens. It is of medium height, strong and vigorous, having sturdy upright stems. The foliage is a dark rich green, veined red. It blooms in early mid-season and is said to be the darkest red peony grown. It is at least one of the best of the dark reds and, although it is an old standard variety, the price is increasing and there is not stock enough of it to supply the demand. Each \$2.50

**MONT BLANC** (Lemoine)—Rose type, early mid-season, very large compact globular bloom having lacinated petals which gives the flower a lacy effect. The color is a milk white with the center slightly tinted rose. Very fragrant. The plant is of medium height and the stems, while strong, are not always strong enough to bear up the mammoth large blooms. One of the finest peonies in existence. Each \$3.00

**MRS. A. M. BRAND** (Brand 1925)—This is a beautiful pure white of immense size. The form of the flower is exquisite. The stems are of good length, strong, clean and of a light green color. The foliage of the plant is light green glossy and free from disease. In every respect this is a great flower. At the National Peony Show two years ago, this variety was awarded the American Peony Society Gold Medal. At the Peony Show held in Minneapolis last summer, this variety won first prize in the class of seedlings. (Originators description.) Each \$50.00

**MRS. EDWARD HARDING** (Shaylor)—A large pure white flower of semi-rose type, having close set petals of fine quality and a pleasing form. The color is of the clearest white, suffused with a delicate golden reflection from the concealed stamens. The plant has ideal habits, is strong grower with vigorous upright stems. This is the much talked of seedling that won the prize at the National Peony Show in Cleveland, Ohio, in 1918. There is not stock enough to supply the demand. Each \$15.00

**MRS. JOHN M. KLEITSCH** (Brand)—A pure lavender pink of great size. This is the flower that at the St. Paul National Show was shown in the bud. It did not open until the second day, and after the judging was over, when it did open, it was the wonder of all who beheld it. Many said that it was as great a flower as Solange, but of a different color. Lavender

pink; self color. Petals broad and very perfect and of great substance. (Originators description). Each **\$50.00**

**MRS. ROMAINE B. WARE** (Brand)—This is a beautiful shade of pink. The flower has much the color and general conformation of Sarah Bernhardt. The bloom has a peculiar and pleasing form. There is a beautiful rose bud effect in the center of the flower. We consider this very fine. (Originators description). Each **\$50.00**

**MYRTLE GENTRY** (Brand)—Here is another beautiful peony of a delicate salmon pink, carrying much of the color of Tourangelle. We believe this flower excels Tourangelle in beauty, while it is easily as large and a much more regular and profuse bloomer. The stems are strong and hold the flower well erect. The beauty of Myrtle Gentry lies not only in the beautiful coloring, but in the form of the flower, its great broad, rose-like petals and in the wonderful arrangement of the petals. Here is a peony that is truly fragrant. It was awarded the American Peony Society's Silver Medal at the St. Paul National Show. At the Minneapolis show last summer it received second prize in the class of seedlings. (Originators description). Each **\$50.00**

**NYMPHAE** (Thurlow)—A large creamy white flower of a semi-rose type, it has large incurved silken petals that are lacinated and the yellow stamens in the center reflect a golden light through the whole flower. It is a tall growing flower with good stems and very fragrant. A profuse mid-season bloomer that can be depended upon to furnish a display of fine blooms each year. Each **\$5.00**

**OLD SILVER TIP** (Brand)—Semi-rose type, late mid-season, soft madder-red, with silver tipped petal giving it a decided silvery sheen. Old Silver Tip is a wonderfully profuse bloomer and splendid for landscape planting. Each **\$1.00**

**OPAL** (Pleas)—This flower is of true rose-type without stamens or markings, and the petals are long pointed, and symmetrically imbricated and just enough incurved to make a cup shaped flower of great beauty. It opens a dainty baby pink changing to an opalescent French-white and reveals a delicate bud like center similar to Madame Emile Galle. The plant is medium tall with good habits and medium strong stems. A free and reliable bloomer in late mid-season. Very delicate. Each **\$2.00**

**PHILOMELE** (Calot)—Anemone type, mid-season, guards or primary petals bright violet rose. Anemone center of petaloids or narrow golden yellow petals changing to cream or amber yellow. As the flower develops a crown appears of bright rose edged dark crimson. Has the true honey fragrance; very strong upright grower and fine bloomer. Very distinct. Each **\$1.00**

**PHOEBIA CAREY** (Brand)—This is a late blooming variety that is very beautiful and thoroughly reliable. It is a full rose type and the color is a soft rose-pink tinted lavender, shaded deeper toward the center. Petals are very broad cup shaped of finest texture. A tall strong grower with an abundance of light green foliage. Delightfully fragrant and lasts well when cut. One of the most desirable of all the Brand Peonies. Stock is always scarce. Each **\$6.00**

**PHYLLIS KELWAY** (Kelway)—Semi-rose type, mid-season. Color a light pink shading to flesh pink in the center. Outer petals are very large and broad and open in flat cupped form with a center of narrower petals loosely arranged and filled with golden stamens. This is a better flower than you would imagine from the description. The color is very unique and beautiful and it is a strong grower with good strong stems that hold the flowers up well. Worth the price. Each **\$8.00**

**PRESIDENT TAFT** (Blaauw)—A very large semi-rose type flower that blooms in the late mid-season. The color is what may be called a hydrangea pink flecked with carmine, the outer guard petals are striped with carmine and in bud it very much resembles La Tulipe. This is classed as a semi-rose type, but there are so few stamens showing in it, that it might almost be called rose type. As a cut flower it has no superior, as an exhibition flower, it has probably won more prizes than any other. It is a wonderful strong grower and is one of the largest of the peony family. With a little extra feeding and disbudding, individual flowers may be grown twelve inches in diameter. Under ordinary culture I have seen blooms eight to ten inches in diameter. A wonderful large flower that is fragrant and has quality. Don't miss this one or you will regret it. Each **\$2.00**

**PRESIDENT ROOSEVELT** (Warnaar)—A semi-rose type, mid-season, a deep brilliant red. This variety was purchased in England under number and named in Holland for our Ex. President. A medium tall erect growing plant with slender but strong stems. Good for either landscape purposes or as a cut flower variety. Each **\$1.00**

**PRIMEVERE** (Lemoine)—Bomb type, mid-season, large full blooms in clusters on tall stems; outer petals white, center petals deep sulphur yellow. This is probably the nearest approach we have to a yellow in the Chinese section of peonies. Very fragrant, and holds the yellow color better when kept from the sun. Each **\$2.50**

**PULCHERIMA** (Guerin)—A semi-rose type, mid-season, blushed white with center petals flecked pink. Very pretty. Each **\$5.00**

**QUEEN VICTORIA** (Whitley)—A globular, bomb type flower with the center built up of creamy white petals not fully transformed. Guard petals are flaked with crimson. This may be classed as a pure white as the flaking is not prominent. A very prolific bloomer and very fragrant. The plant is of medium height and it multiplies very fast. This is one of the older varieties that you will want for cut flowers. Each **\$5.00**

**RACHEL** (Terry)—A semi-rose type, early mid-season, flowers of medium size, and produced in great profusion on a plant of medium height having good upright stems and good foliage. In color it is a bright garnet red, shaded darker. It is a very uniform grower making it splendid for landscape work. Each **\$1.00**

**RAOUL DESSERT** (Dessert)—This is a very high globular flower of rose type, having a cupped center. The color is a mauve shaded carmine pink, and silvery tipped. The flowers are perfect in form and it is very fragrant. It is a medium tall, strong, upright grower with good

strong stems. This is one of Dessert's finest productions. In the same class as Therese. Should be in every first class collection. Each \$8.00

**RICHARD CARVEL** (Brand)—A bomb type, early, immense globular flowers and the color is all one shade of crimson, guard petals very large and prominent, center petals gathered into a very tall and immense central dome, tall very stout stems and a very profuse and dependable bloomer. What Jules Elie is to the pink class, this variety is to the early blooming reds. A single plant of this variety on your lawn, is very attractive and delightful. It is beautiful and lasting. Its delightful fragrance adds to its graces and makes it valuable as a cut flower. Probably the best early red. Each \$4.00

**ROSA BONHEUR** (Dessert)—This is a very large, compact, rose type flower, with a very delicate color and fine texture that places it well up in the list among the very best in the world. The broad imbricated petals are slightly lacinated giving it a fringed effect. The color is a light violet rose, and the guard petals are flecked crimson. It is a full rose type and very large, similar to Sarah Bernhardt. Blooms in late mid-season. This is another of the aristocrats that scores 9.0, in the symposium. Each \$4.00

**SARAH BERNHARDT** (Lemoine)—This variety stands out among all other peonies and is almost in a class by itself. It is one of the strongest growers, if not the strongest grower of all of the peony family. It is a refined, beautiful flower of the semi-rose type, blooms in late mid-season. The flowers are of remarkable size, full and double, of unusual perfection of form; extremely large petals that are imbricated and twisted into a large hemisphere of beauty that rivals description. The color has been described as an apple blossom pink with each petal tipped with silver, giving the appearance of being a distinct border of white. Fragrance agreeable. Some one has said, "I wish all peonies were like Sarah Bernhardt; it always blooms; it is the queen of them all. It has no faults." Each \$2.50

**SARAH CARSTENSON** (Terry)—This fine variety is probably Terry's best production. The flowers are of medium size, rose type with wide imbricated outer petals, a band of narrow irregular petals surrounding a ball center. The color is a soft violet rose, shading to a lighter flesh color and flaked with deeper rose pink. When well developed, this might almost be called a crown type as the central petals develop into a well formed crown and the crown petals are splashed with rose red. The plant growth is medium with strong upright stems, that support the blooms in good form. A slow propagator, and stock very scarce. Each \$5.00

**SARAH K. THURLOW** (Thurlow 1921)—A large rose type flower with broad incurved outer petals of flesh pink streaked with crimson; central petals broad and graduated toward the center forming convex flower of great beauty. The central petals are a soft blush pink, deeper than the guard petals, with an opalescent, salmon shading, in the center. Fragrant, medium tall, upright grower with stems that support the flowers well. Late mid-season. The color and form of the flower resembles Tourangelle. One of Thurlow's best introductions. Each \$20.00

**SEA FOAM** (Peterson)—An early creamy white that changes to a pure white with age. It is highly perfumed, globular in form, very prolific and has good stems for a cut flower variety. Each \$7.5

**SHAYLORS DREAM** (Shaylor)—This is a peony that is not always appreciated, owing to its variable habits. On young plants that are not well established the flowers sometimes come single. On well established plants the blooms are very large and semi-double with fine texture and exquisitely beautiful. The outer petals are a light flesh pink and the central petals are a creamy white, long and irregularly fringed and show a reflected golden tint from conspicuous yellow stamens. A strong vigorous plant of desirable habits. Each \$6.00

**SISTERS ANNIE** (Brand)—This is a beautiful flower of a deep flat semi-rose type. The stems are tall and strong. The ground color is a delicate sea shell pink, heavily suffused with deep rose. The edges of the petals are fringed. Blooms in early mid-season. Each \$1.00

**SOLANGE** (Lemoine)—This is one peony which catalog writers have vied with each other in attempting to describe, and which none have been able to do justice. It is a medium late bloomer, and does not always open up well, but when it does it is perfect rose type of medium large size and the formation of the flower is as perfect as any peony that grows, more perfect than a well grown rose. Various terms have been used in trying to describe the color as follows: Havana brown, fried butter, orange salmon, creamy white, reddish brown, tea shade, etc. I shall suffice to call it a good rich cream color fading to an ivory white as the flowers develop. The plant is a fairly strong grower but it does not increase, as some varieties do and the demand is such that it is not likely to be any cheaper than it is at present. Protect it from the hot rays of the sun and give it plenty of water, and you will get blooms that will reward you for the extra care you have given them. Each \$5.00

**SOUVENIR DE LOUIS BIGOT** (Dessert)—This is a very beautiful and distinct pink variety of the rose type, has very large convex blooms with fringed petals. Color bengal rose, slightly tinted carmine at the base, changing to a salmon pink with a silvery reflex as the flower becomes older. A fine free bloomer coming in mid-season. There is a fiery brilliancy glowing from the heart of this flower that makes it wonderfully attractive. This is a very distinct variety and is decidedly the best of its color. Should be in every first class collection. Each \$6.00

**STEPHANIA** (Terry)—A free flowering variety that produces an abundance of large loose blooms of the semi-rose type. The color is a pure white with golden stamens showing among the central petals that reflect a golden tint to the very fine silken petals. Blooms in mid-season and is fragrant. Each \$2.00

**THE GEM** (Pleas)—One of the tallest growing peonies. It stands erect well over four feet high and is of the same shade of red as Richard Carvel, a rich dark crimson, flowers of full round rose type and an excellent keeper. The extra long stems make it a splendid cut flower variety. This variety does best on well established plants about three years old. Each \$2.00

**THERESE** (Dessert)—Rating 9.8. This is one of the three highest rating peonies. This is one variety that it does not take an expert to appreciate and yet the experts do appreciate it. Go where you will to the peony shows or to the peony fields, and you are sure to find Therese surrounded by a group of enthusiastic admirers. It is a large, flat, full rose type flower of a light violet rose color shading to a lighter shade in the center. The plant is a strong vigorous upright grower with good strong stems that bear up the immense blooms well. A free mid-season bloomer, having delicate fragrance. Has no bad traits and the price is very reasonable. Each **\$4.00**

**TOM THUMB** (Terry)—Dwarf plant loaded with medium sized flowers. Color a light rose pink, center finely fringed, beautiful and fragrant. Each **\$1.00**

**TOURANGELLE** (Dessert)—A large full rose type flower that opens in flat form, and then develops higher with a cupped center. Its color is an opalescent pearly white, suffused with a shade of delicate salmon and La France pink. In color and texture, this is one of the most delicate of all peonies. The blooms come late and are very fragrant. The plant is medium tall and healthy and yet it has an effeminate growth that is in keeping with the delicacy of the flower which it bears. The stems are slender and willowy, and droop gracefully

under the weights of the large flowers. One of the very finest in any collection. Each **\$3.00**

**UMBELLATA ROSEA** (Dessert)—A medium sized flower of a modified rose type, having broad cupped guard petals of a violet rose color surrounding a center of narrow petals of amber white among which some are of the same violet rose color as the guard petals. This variety blooms very early and has uniform habits and stands up well making a splendid landscape variety. Good strong divisions. Each **\$5.00**

**WALTER FAXON** (Richardson)—A medium sized pink flower of the semi-rose type, globular in form with a cupped center. In color it is a soft coral pink shading lighter at the end of the petals and a deeper rose pink at the base of the petals. The concealed golden stamens add a salmon reflex through the pink of the petals. It is a medium tall and vigorous plant, blooming in mid-season. A very unique color. One of the much talked of varieties that is in great demand. Each **\$5.00**

**WILLIAM F. TURNER** (Shaylor 1916)—A very dark or garnet red having a velvety sheen; of the semi-rose type and blooms in early mid-season. Very large loosely built flowers of a very dark rich red color, that make them very popular. Plant has good habits and bears up well. Each **\$3.50**

## JAPANESE AND SINGLE PEONIES

**AUREOLIN**—This beautiful variety comes very near being the long sought yellow peony. The single row of guard petals are broad sulphur yellow that hold their yellow color well. It is very beautiful. Each **\$3.50**

**CURIOSITY** (Dessert & Mechin)—Large flowers of the anemone type; color a violet red, the center petaloids are of the same color and tipped with yellow. A strong upright grower and the flowers are about uniform in height which makes it an excellent variety for landscape effect. Each **\$7.50**

**CATHEDRAL** (Jap) (Syn. Hana-No-Soto) This variety has been classed as a Japanese type but really is what should be called an anemone type. It has heavy guard petals of violet or rose pink and the center is filled with finer petals or petaloids of a lighter shade of pink that harmonizes very beautifully with the guards. It is an upright and very uniform grower and lasts well. One of the very best for landscape effect. This variety was a universal favorite in the field this season. Each **\$2.50**

**DEPARTING SUN** (Jap)—A true Japanese type, broad guard petals of a rich crimson, short filiform petals of claret frosted with good, a strong uniform upright grower that is unexcelled for landscape effect. It is also splendid as a cut flower. One of the best of its type. Each **\$5.00**

**FUYAJO** (Jap)—One of the most distinct and desirable of all of the Japanese varieties. The single row of outer petals are a dark rich mahogany red, surrounding a full center of almost fully transformed broad

flat petaloids of the same dark red as the outer petals, veined on the reverse side and tipped with golden brown. Carpels a uniform light green. The plant is very tall and vigorous, with attractive foliage slightly ruffled and veined red. A very desirable variety. Each **\$10.00**

**JAP. No. 230**—This is a Japanese variety that I received from a private collection without a name and I have been unable to identify it. It is a bright crimson red with golden yellow stamens in the center. It is a very uniform sturdy grower and if it has a name, I am quite sure the price of it would be much higher than I am listing it. If it is not a named variety I am sure that it is more worthy than many varieties that have been named. It was another of the favorites in the field this season. Each **\$2.00**

**MIKADO** (Barr)—The guards of velvety crimson form a large and well developed cup or chalice enclosing a filigree cushion of crimson petaloids edged and tipped with gold. This is without doubt among the best of the Japanese type, which are so popular. Each **\$2.00**

**OPHIR**—Large flower with pinkish guard petals with large full golden yellow center. Each **50c**

**SNOW WHEEL**—A large sized flower with broad waxy guard petals of clear white. Center of loose filamentous petals tipped with a golden yellow. Each **\$2.00**

**VESTA**—A strong and vigorous plant with a good sized flower of purplish red. Each **\$1.00**



## SOME EXTRAORDINARY PEONY COLLECTIONS

<b>COLLECTION NO. 1—(For Beginners)</b> .....		<b>\$ 3.25</b>
Edulus Superba, pink .....	\$ .50	
Felix Crousse, red .....	1.00	
Festiva Maxima, white .....	1.00	
LaTulipe .....	1.00	
Umbellata Rosea, pink .....	.50	
<b>Total retail value</b> .....	<b>\$ 4.00</b>	
<b>COLLECTION NO. 2—(For the Connoisseur)</b> .....		<b>7.50</b>
Baroness Schroeder, white .....	1.50	
Festiva Maxima .....	1.00	
Mons. Jules Elie, pink .....	1.00	
President Taft, pink .....	2.00	
Richard Carvel, bright red .....	4.00	
<b>Total retail value</b> .....	<b>\$ 9.50</b>	
<b>COLLECTION NO. 3—(For the Market Gardener)</b> ....		<b>5.00</b>
Edulus Superba, pink .....	.50	
Umbellata Rosea, pink .....	.50	
Queen Victoria, white .....	.50	
Pulcherima, cream .....	.50	
Floral Treasure, pink .....	.75	
Felix Crousse, red .....	1.00	
Golden Harvest, pink .....	.75	
Grover Cleveland, red .....	1.50	
Candidissima, white .....	.75	
Gigantea, pink .....	1.00	
<b>Total retail value</b> .....	<b>\$ 7.75</b>	
<b>COLLECTION NO. 4—(For the Landscape Artist)</b> ....		<b>27.50</b>
One each of 41 varieties listed at \$1.00 and under		
<b>Total retail value</b> .....	<b>\$ 37.75</b>	
<b>COLLECTION NO. 5</b> .....		<b>200.00</b>
This is one for the advanced Connoisseur or "Peony Fan" who will have nothing worth less than \$5.00.		
John M. Good .....	100.00	
Kelways Glorious .....	18.00	
Kelways Queen .....	12.50	
Martha Bullock .....	10.00	
Mrs. A. M. Brand .....	50.00	
Mrs. Edward Harding .....	15.00	
Phoebe Carey .....	6.00	
Shaylors Dream .....	6.00	
Souv. D'Louis Bigot .....	6.00	
Fuyajo .....	10.00	
<b>Total retail value</b> .....	<b>\$233.50</b>	



## THE IRIS

I doubt if one person in 10,000 has a clear conception of the great variety of beautiful new Iris which have been brought into existence by specialists, both in America and in foreign countries in recent years. Thousands of beautiful kinds are appearing and among them are such gorgeously beautiful flowers as can hardly be excelled by the orchid. In fact the Iris is often spoken of as "the poor man's orchid" by way of comparison, and I doubt if the Iris suffers much by such comparison, so far as regal colorings are concerned. In contrast with the orchid, which is difficult to grow and can only be successfully grown by experts in greenhouses or in tropical climates, the Iris can be as easily grown as a weed by anyone and almost anywhere. It is "as hardy as an oak" and a prolific multiplier.

It is suitable for any purpose for which almost any other flower can be used and is far more showy and beautiful than most of them. Very effective for mass and border planting, in isolated positions and as single specimens in many situations. Iris are becoming very popular and are growing in great favor in the finest gardens. The following list comprises most of the best of the older favorites and a choice selections of the best newer varieties. Order a choice collection and beautify your home surroundings. See our special collection offers on page 16.

**A. E. KUNDERD** (Fryer)—Bronzy yellow tinged with magenta; F. magenta red tinged with bronze, reticulated with yellow from center to base. Conspicuous orange beard. Fragrant. Glory strain. Each 50c

**AFTERGLOW** (Sturtevant)—A greyish lavender, shading to a rich yellow through the center. Three to four feet. Each \$.50

**ALBERT VICTOR** (Barr)—S. soft blue; F. beautiful lavender. Large and fine. Forty inches. Pallida type. Each \$.25

**ALCAZAR** (Vilmorin)—S. Light bluish violet; F. deep purple with bronze veined throat. Each \$.35

**AMBASSADEUR** (Vilmorin) S. lavender; F. deep reddish violet, with a rich orange beard. Three to four feet. Each \$1.00

**ANNA FARR** (Farr)—White edged blue. One of the finest frilled whites. Mid-season. Three feet. Each \$.75

**ANTONIA ANTONETTE** (A. E. K. 1926)—A new seedling of my own that has proven very popular and is undoubtedly one of the finest Iris ever produced. It is a very delicate pink, very faintly tinted lavender. Solid color, very tall plant. The flowers hold up well as cut flowers and the color is strikingly beautiful under artificial light. Each \$2.50

- ARCHEVEQUE** (Vilmorin)—S. rich violet purple; F. bright velvety crimson. Very beautiful. Early. Each \$3.35
- ASIA** (Yeld)—S. silvery lavender; F. reddish purple; lighter towards the margin. Beard a bright golden yellow. Fine. Each \$3.00
- AUREA** (Jacques)—S. & F. finest chrome yellow. Large perfect form; the best of all yellows. Each \$3.35
- AUTUMN KING**—A large purple Iris that blooms in June and again in September. The color of S. Lavender violet F. Pleroma violet. 30 to 36 inches. Each \$1.00
- B. Y. MORRISON** (Sturtevant)—S. pale lavender F. velvety purple with lavender border. Medium tall. Each \$1.00
- CAMELOT** (Bliss)—Standards and Falls; creamy white edged with pale violet. Three feet. Each \$5.50
- CELESTE** (Lemoine)—Azure blue; self color. Very fine. Each \$3.30
- CHESTER J. HUNT** (Farr)—S. blue; F. marine blue. 30 inches. Each \$5.50
- CLUNY** (Vilmorin)—S. soft lilac blue; F. darker blue. Early. 39 inches. Each \$3.35
- CRUSADER** (Fos.)—S. bluish; F. violet blue. Very fine. Each \$3.75
- DARIUS**—S. rich canary yellow; F. lilac with paler edges. Each \$2.25
- DR. ANDRIST** (Fryer)—S. bronze yellow; F. velvety plush of maroon red. Orange beard, delightfully fragrant. Each \$5.50
- DR. BERNICE**—S. Copper bronze; F. rich crimson. Very beautiful. Each \$2.25
- E. L. CRANDALL** (Farr)—S. white bordered with deep blue; F. same widely margined blue at base. Each \$5.50
- FAIRY** (Kennicott)—A tall white suffused soft blue. Orange beard; very sweet scented. Very fine and delicate. Each \$2.25
- FLAVESCENS** (De Candolle)—A delicate shade of sulphur yellow; sweet scented flowers; fine for massing and as cut flowers. 30 inches. Each \$2.25
- FLORENTINA** (Syn. Silver King)—White flushed lavender. Early. Very fragrant and fine. Two feet. Each \$2.25
- FRYER'S GLORY** (Fryer)—F. golden bronze; S. rich red maroon. Very beautiful. Each \$5.50
- HELDGE** (Stenophila)—A lemon yellow with pearly shadings. Each \$2.25
- HER MAJESTY** (Perry)—S. rose pink; F. rose pink veined darker. Each \$3.35
- IRIS KING** (G. & K.)—S. clear, deep lemon yellow; F. rich maroon bordered yellow. Very beautiful. One of the best. Each \$3.30
- ISOLENE** (Vilmorin)—S. silvery lilac flushed yellow; F. purplish old rose. A large striking flower of unusual coloring. 36 inches. Each \$5.50
- JACQUESIANA** (Lemoine)—S. coppery crimson; F. deep reddish purple. Each \$5.50
- JEANNE D'ARC** (Verdier)—A tall delicate white bordered with light lavender with frilled edges. Each \$2.25
- JUNIATA** (Farr)—A clear tall violet blue, darker than Dalmatica. One of the tallest of the bearded iris. Each \$3.35
- KATHRYN FRYER** (Fryer)—S. large yellow; F. bright velvety purple, lighter edge. Yellow beard. Fragrant. Each \$7.75
- KHEDIVE**—Beautiful soft lavender; Falls a little deeper, with distinct orange beard. Each \$2.25
- KOCHII** (Syn. Atropurpurea)—S. & F. A rich claret purple. Early. Each \$2.25
- LENT A WILLIAMSON** (W.)—S. lavender violet; F. deep violet purple; beautiful golden beard. One of the very best. Each \$5.50
- LOHENGRIN** (G. & K.)—A soft shade of cattleya-rose. Tall and fine. Each \$3.30
- LORD OF JUNE** (Yeld)—S. pale lavender blue; F. rich aniline-blue. Massive flowers of perfect form. One of the best. Each \$1.00
- LORELEY** (G. & K.)—S. light yellow; F. ultramarine blue, cream bordered. Each \$2.25
- MADAME CHEREAU**—White frilled with a picotee border of violet blue. Very pretty; 32 inches. One of the best. Each \$2.25
- MONSIGNOR** (Vilmorin)—S. rich satiny violet; F. rich crimson purple with lighter margin. Very large. Each \$2.25
- MOTHER OF PEARL** (Sturtevant)—A clear pearly lavender color with a golden beard; sweet scented. This is undoubtedly one of the most delicately colored and beautiful irises in existence. Grows four feet tall and is very floriferous. Extra fine. Each \$1.00
- MRS. KIMBALL**—S. heliotrope tinted with bronze; F. reddish purple with a lighter border, reticulated white. Orange beard. Fragrant. Each \$2.25
- MRS. W. E. FRYER** (Fryer)—S. white shaded heliotrope; F. purple crimson bordered a lighter shade; reticulated with white. Orange beard. 32 inches. Each \$5.50
- MT. PENN** (Farr)—S. lavender rose; F. crimson lilac; deep orange beard. Each \$3.75
- NAVAJO** (Farr)—S. light bronzy yellow; F. deep maroon heavily veined creamy white; stigmas yellow; deep orange beard. Extra fine. Each \$5.50
- NIBELUNGEN** (G. & K.)—S. fawn yellow; F. violet purple bordered fawn color. A very fine iris. Each \$2.25
- ORIFLAMME** (Vilmorin)—S. dark lavender; F. hortense violet. Stalks well branched; 30 inches. Very fine for massing. Each \$5.50
- PALLIDA DALMATICA**—S. delicate lavender; F. clear deep lavender. Flowers, large and fine. A very strong grower. 40 inches. Each \$2.25
- PAULINE** (Farr)—A rich rosy lilac; darker than Dalmatica; its silken petals form a delightful contrast to its golden beard. Each \$3.35
- PERFECTION** (Barr)—S. light blue; F. dark velvety violet. A dark richly colored flower. Exceptionally beautiful and showy. Each \$3.35

PHYLIS BLISS (Bliss)—S. & F. pale rosy lavender. Large and fine. Each \$2.00

PRINCESS VICTORIA LOUISE—S. primrose yellow; F. rich plum color bordered cream. Each \$3.35

QUAKER LADY (Farr)—S. smoky lavender with yellow shading. F. same, overlaid with orange buff. Stigmas yellow; yellow beard. Grand. Each \$3.30

QUEEN OF MAY (Salter)—A beautiful lavender pink. Vigorous and fine. Each \$2.25

REMBRANDT (Barr)—S. & F. soft lilac blue. Each \$2.25

RHEIN NIXE—S. Pure white; F. deep violet blue with white edge. Each \$2.25

SHERWIN WRIGHT—S. & F. A rich deep yellow. Very floriferous. Each \$2.25

SPECIAL NO. 2—A fine seedling from Mr. Fryer. S. A bronze lemon wine shade. F. dark purple of striking appearance. Each \$3.35

SUNSET (Denis)—S. like cloth of gold; F. same suffused violet blue; a strong grower and sweet scented. Very fine. Each \$1.00

THORBECKE (Dessert)—S. blushed white; F. purple. Each \$5.50

VIOLACEA GRANDIFLORA—S. rich blue; F. violet blue; tall and fine. Each \$3.55

W. J. FRYER (Fryer)—S. large yellow; F. maroon with yellow borders; center overshadowed violet. 30 inches. Each \$7.75

WYOMISSING (Farr)—S. creamy white suffused soft rose; F. deep rose shading to flesh color at the border. Each \$3.35

W. F. CHRISTMAN—S. white tinged violet; F. purple reticulated white with lighter border. Yellow beard. Fragrant. Fine. Each \$3.35

REGELIO-CYCLUS IRIS—A new and very beautiful early flowering race of Iris, produced by crossing Regelia Iris with Oncocyclus Iris. This is a very beautiful Iris and blooms soon after the tulips are gone and before most of the large flowering Iris come into flower. The flowers are of very striking appearance and showy. Must be planted in well drained soil and sunny situation. After the foliage has died down in July, lift the roots (or rhizomes), and cure them well for a month or two and re-plant. Replanting can be done at any time in the fall before the ground freezes up, but it is important that the rhizomes be taken up each year in order that they shall produce fine flowers.

The mixture I am offering this season contains only four varieties, and in somewhat unequal proportions so that in a dozen roots, only one or several varieties may be found. Multiplies very rapidly.

Each \$2.25 Doz. \$2.50

## SPECIAL IRIS COLLECTIONS

COLLECTION NO. 1 One rhizome of each of the 65 varieties listed (Value \$34.75), for \$29.48

COLLECTION NO. 2 One rhizome of each of the 62 varieties listed at \$1.00 or less (Value \$27.25) for \$23.17

COLLECTION NO. 3 One rhizome of each of the 56 varieties listed at \$.75 or less (Value \$21.25) for \$18.07

COLLECTION NO. 4 One rhizome of each of the 51 varieties listed at \$.50 or less (Value \$17.50) for \$14.88

COLLECTION NO. 5 One rhizome of each of the 38 varieties listed at \$.35 or less (Value \$11.00) for \$9.35

COLLECTION NO. 6 One rhizome of each of the 21 varieties listed at \$.25 (Value \$5.25) for \$4.47

SPECIAL OFFER If your order amounts to \$10.00, and is accompanied by a remittance in full, I will include one Antonia Antonette free.

For an order amounting to \$15.00, I will include one Antonia Antonette and one Mother of Pearl free.

For an order amounting to \$25.00 or more I will include one Mother of Pearl, one Ambassadeur, one Lord of June and one Antonia Antonette free.

These special offers do not apply to the collection offers above, they apply to all orders for single rhizomes or where ordered by the dozen or hundred.

### PRICES IN QUANTITY

One dozen of a variety for 10 times the single price.

One hundred of a variety for 7 times the dozen price.

Six sold at the dozen rate.

Fifty at the one hundred rate.



**EARLY FLOWERING TULIPS**

Picotee, Creamy white, edged pink ..... .50 4.00  
 Cottage Tulips, Extra choice mixed ..... .50 4.00  
 This class of tulips come into bloom some weeks ahead of the "Breeder", "Cottage" or "Darwin's", and are desirable for plant-

ing, either in small groups, in borders or for formal bedding.  
 Per 10 Per 100  
 Single Flowered, Extra fine mixture ..... \$ .35 \$3.50  
 Double Flowered, Extra fine mixture ..... .40 3.75

**AMERICAN GROWN NARCISSI (DAFFODILS)**

As Narcissi (Daffodils) bulbs may not be imported, we offer only the very best American grown bulbs and in the largest size of Single-Nosed bulbs. Single-Nosed or round bulbs are sure to produce one good strong flower from each bulb, and they will grow into larger bulbs each year and will not require transplanting so soon as Double Nosed bulbs which cost more money.

The Narcissus is very hardy, and a nice planting of these good varieties in the Hardy border will give you a wealth of bloom for a number of years without transplanting.

Per 10 Per 100  
**EMPEROR**—Primrose perianth. Trumpet deeper yellow ..... .90 8.00  
**GLORY OF LEIDEN**—Perianth and trumpet both deep yellow ..... .90 8.00  
**KING ALFRED**—Perianth and trumpet deep yellow. Extra large ..... 2.00 180.00  
**HORSFIELDII**—Perianth, White trumpet rich yellow ..... .90 8.00  
**PRINCEPS**—Perianth, Yellow trumpet deeper yellow ..... .75 7.00

**JONQUILS (SWEET SCENTED)**

Per 10 Per 100  
**CAMPERNELLE RUGULOSUS**—Rich yellow ..... \$ .75 \$6.00

**POETAZ**

**ELVIRA**—White perianth and yellow cup tinged orange \$ .90 \$7.00

**CROCUS—"Harbringers of Spring"**

Planted in pots for house culture, in beds, clumps, or lines in the garden, or scattered in the grass of the lawn. They are perfectly reliable everywhere.

Per 10 Per 100  
 Blue and Purple shades ..... \$ .35 \$3.00  
 Yellow shades ..... .35 3.00  
 White shades ..... .35 3.00  
 Striped and Variegated ..... .35 3.00  
 Extra Fine Mixture ..... .35 3.00

**SNOWDROPS**

Dainty little bells which come into bloom in March and April. They are very attractive because of their blooming season and daintiness of flower.  
 Per 10 \$.45 Per 100 \$4.00

**SCILLA SIBERICA**

An early spring flower giving a star effect, each bulb throwing two or more spikes. Ideal for naturalizing and fine for cutting. Siberica sky blue.  
 Per 10 \$.35 Per 100 \$3.00

**GRAPE HYACINTHS**

(Muscari)

Strong erect trusses of miniature Hyacinths. Their dainty little bells resembling Lily of the Valley bells. Very good for naturalizing. Heavenly blue (Bright Sky-Blue).  
 Per 10 \$.55 Per 100 \$3.00

**FREESIAS**

For house, conservatory, and greenhouse culture only. Improved Purity Superflora. Pure white.



## REGAL LILY (*Lilium Regale*)

This wonderful, new, hardy lily was discovered growing in Northern China by Prof. E. H. Wilson of the Arnold Arboretum, Boston, and was introduced by him into the United States in 1908, and is still little known to the general public. A very exhaustive treatise on the Regal Lily, by David Griffiths, Horticulturist of The Department of Agriculture, Washington, D. C., may be had by addressing The United States Department of Agriculture, Washington, D. C., and asking for Department Bulletin No. 1459.

I quote from the above bulletin as follows: "We have here the anomaly of a market offering only a few hundred thousand bulbs of all sizes and a prospective demand in a very short while for a dozen millions if the bulbs were offered."

To the commercial grower it is comforting to know, in these days of apparent overproduction, that we are not likely to have an over supply of Regal Lily bulbs for number of years at least.

To the connoisseur who likes to have the best in his gardens and to know something of their history—You should read the very interesting story of Prof. Wilson's trip to Thibet in quest of the Regal Lily, published in the COUNTRY GENTLEMAN of October, 1925, in which he tells of having seen it growing wild by the hundreds of thousands exhaling its wonderful perfume, giving the air a delightful odor for miles around.

"Throughout an indefinite past, generations of the Regal Lily had lived unseen save by rude peasants of a rude land. But a few white men had passed that way when first I made the discovery and none had noted my Royal Lady. This had been preserved for me. \* \* \* \* \* The air in the cool of the morning and the evening was laden with delicious perfumes exhaled from every blossom. For a brief season this Lily transforms a lonely semi-arid region into a veritable fairy-land."

In his quest for the lily Prof. Wilson met with a very serious accident in which he nearly lost his life. After telling of the accident he adds: "Notwithstanding the accident, I got my Regal Lily and brought the bulb safely to Boston. The bulbs were encased in clay packed in charcoal, shipped at silk rates and reached Boston a few days after myself." . . . .

Note:—Mr. Wilson's entire story is very interesting and you can read it in your Library in the issue above referred to.

The Regal Lily grows to a height of two to four feet or more, and has as many as twelve or more massive blooms open at a time. Color is a delicate creamy white with canary yellow in the throat and a pinkish tint on the outside of the petals. It blooms in July and increases rapidly both by bulb offsets and from seed. It is very easy to grow from seed and usually blooms the second year.

**REGAL LILY BULBS YET VERY SCARCE**

I have but a limited amount of bulbs to offer and these will be sent to the first to order them. I am able to produce very fine hardy bulbs here in Northern Indiana and offer bulbs of excellent quality for delivery during the months of October and November.

Send your orders now to be sure of having it filled as the supply will not equal the demand.

Blooming sized Bulbs .....	Each	\$ .15	Dozen	\$1.50
Medium sized Bulbs .....	Each	.35	Dozen	3.50
Medium large Bulbs .....	Each	.50	Dozen	5.00
Largest sized Bulbs .....	Each	.70	Dozen	7.00
Regal Lily Seed for Fall planting, 100 seeds, 25c, 1000, \$1.50				

The seed can also be very successfully grown in the spring. Full directions printed on each package.

**LILIUM TIGRINUM**

(Single Tiger Lily)

This is the oldest and best known of all lilies. The tall hardy spikes loaded with bright orange lilies with black spots; blooms freely outdoors in midsummer. Very showy and fine.

Each .....	25c.	Dozen	\$2.50
------------	------	-------	--------

**LILIUM TIGRINUM FL. PL.**

(Double Tiger Lily)

Color and markings same as the single. Plant not quite so tall, but also very reliable and hardy.

Each .....	25c.	Dozen	\$2.50
------------	------	-------	--------

**LILIUM CANDIDUM**

The beautiful white Madonna Lily. This is one of the choicest of hardy lilies, blooms in June. Should be planted in September.

Large blooming Bulbs .....	Each, 50c; 3 for \$1.25; 12 for \$4.50
----------------------------	--



Largest Size

Medium Large

Medium

Blooming Size



*J. C. Grossman & Co. Inc.*  
IF YOU ARE A MEMBER PLEASE HAND THIS TO SOME FRIEND

**Special Offer**

Garden & Home Builder  
(yearly rate \$3.00)

and membership in American Gladiolus Society  
(annual dues \$2.00)

**BOTH for only \$4.00**

Garden & Home Builder is the most reliable, timely and complete guide for the garden. Each month it covers the garden work for that month.

The A.G.S. will send you its monthly magazine, devoted solely to Gladiolus. **This combined, unusual service will aid with every problem of your garden.**

"I hereby apply for membership in the American Gladiolus Society, and inclose \$2.00 as annual membership dues, \$1.00 of which is for a year's subscription to the 'American Gladiolus Society Monthly Bulletin.'"

Mail this application and \$2.00 to

**JOHN C. DAVIS, Sec. and Treas., 77 South Ave., Rochester, N. Y.**

or if you desire to subscribe for Garden & Home Builder send \$4.00

Name \_\_\_\_\_

Street and No. \_\_\_\_\_

City or Town \_\_\_\_\_

State \_\_\_\_\_

Amateur or Professional \_\_\_\_\_

**BECOME A MEMBER OF THE AMERICAN GLADIOLUS SOCIETY**

OVER

# The Gladiolus, The King of Flowers

---

Would you like to know more about growing Gladiolus? Would you like to know how to make them bloom like your neighbors? Wouldn't it please you to be able to produce these long spikes with many flowers open, such as you see at the flower shows or in your florist's show windows? Would it be interesting to you to know what new varieties are being created; their color, size, and price?

There are no secrets in all these. If you will become a member of the American Gladiolus Society, you will receive its beautiful 32-page monthly "Bulletin," which explains all these things and teaches you how to grow them as good as the professional. The "Bulletin" will also teach you the best varieties and proper colors to grow for different effects and purposes.

Why have nearly four thousand amateurs joined the Society in the past five years? They are "in search of knowledge," and the best place to find it is in the columns of the A. G. S. Official "Bulletin," any issue of which is worth the full cost of membership.

Garden & Home Builder is published in a 20-acre garden—a vast experimental station. Here every new plant, new spray and insecticide, and new cultural method is tested. The results come to you each month in this reliable, fully illustrated periodical. It helps with every phase of garden work in every kind of a garden.

This magazine has been enlarged, its policy broadened, its name changed to Garden & Home Builder,—to help with the house as well as with the garden. With more garden material than ever, this is the best garden and home magazine published.

## *SPECIAL OFFER:*

Garden & Home Builder

and

Membership in the A. G. S.

} \$4.00

## DO'S AND DON'TS FOR SUCCESS WITH PEONIES

Much has been written on this subject and lengthy suggestions made (many of which are useless and worse), but for success it is only necessary to carefully follow a few simple directions.

First of all, do not manure your soil for a year before planting, nor for a year after planting, and never cover plants with manure over winter. Use leaves, grass clippings, and similar materials for this purpose.

Spade your ground deeply and pulverize thoroughly. Any good garden soil is suitable. Set plants so the crown (where eyes and roots connect) will be covered about three inches (four inches is a little deep and two inches a little shallow).

When planting, set plants so that the bark side of the plants, or roots (instead of the cut edge surface), lean against the ground. This will enable the new roots to grow downward and your plants to build a healthy new crown, instead of the old roots and crown forming the center and resulting in a weak plant.

About December when the ground is well frozen over, cover the plants as above directed. This is not to keep the roots from freezing, but to keep the freezing and thawing from heaving them out of the ground.

The second year you can begin to feed your plants with well-rotted manures and other fertilizers, applied around the plants and worked into the ground, but never over the plants. Never cut away the tops before September 10th, as this very greatly injures their root growth. The tops are the lungs of your plants and are necessary to develop the next year's flowers.

A. E. KUNDERD

---

## SEEDS

Seeds for Fall planting also many rare new novelties will be found listed in my Annual Gladiolus Catalog, which is issued about January 1, each year. If you do not have a copy write me and a copy will be mailed to you, **free**.

