

GHQ/SCAP Records (RG 331, National Archives and Records Service)

Description of contents

- (1) Box no. 2865
- (2) Folder title/number: (5)
Ogaki Tekkosho K.K.
- (3) Date: Nov. 1946 - Sept. 1950

(4) Subject:

Classification	Type of record
9230, 9621	z

(5) Item description and comment:

Gifu

(6) Reproduction: Yes No

(7) Film no.

Sheet no.

(Compiled by National Diet Library)

TOKAI-HOKURIKU
INFORMATION:

O.D. // *[Signature]*
OCT. - 5 1950

Quand

GENERAL HEADQUARTERS
SUPREME COMMANDER FOR THE ALLIED POWERS
Economic and Scientific Section
APO 500

HBO/MWH/RAS/yy
27 September 1950

387.6(27 Sep 50)ESS/IND

MEMORANDUM FOR: Reparations Agency, Tokyo

SUBJECT: Transmittal of Reconversion Permit.

1. Reference is R.A.R. No. 969 (MS), 21 August 1950, subject: Supplementary Application for Conversion of Ogaki Plant, Ogaki Iron Works Co., Ltd. (Code No. 09-13).

2. The attached Reconversion Permit for the Ogaki Plant, Ogaki Iron Works Co., Ltd. (Code No. 09-13) is transmitted for your action.

3. This permit is issued subject to any and all directives affecting reparations plants which have been issued or may hereafter be issued by the Supreme Commander for the Allied Powers. Reports will be rendered as required by current directives and instructions.

FOR THE CHIEF, ECONOMIC AND SCIENTIFIC SECTION:

1 Incl PAUL S. FUJII
Reconversion Permit. Acting Chief, Industry Division
(dup)

Cys furnished:
CA Sec (dup)
CHS
G-2 Maj Price (Recon Perm only)
CPC (Recon Perm only) (dup)

MEMO FOR RECORD:

The above ltr is self-explanatory.

Mr. R.A. Steele:
26-7842

P. S. F.

check
AJ
66+4=70

CA Sec Copy

GENERAL HEADQUARTERS
 SUPREME COMMANDER FOR THE ALLIED POWERS
 Economic and Scientific Section

27 September 1950

Date

SUBJECT: Reconversion Permit for Reparations Plant R.A.R. No. 969(MS)

TO: **Ogaki Iron Works Co., Ltd. (09-13)**

1. In accordance with Memorandum from the Supreme Commander for the Allied Powers to the Japanese Government, dated 22 November 1946 (SCAPIN-1355), the Ogaki Iron Works Co., Ltd. is permitted to produce at their Ogaki Factory located at 450, Imajima, Nishi-mura, Anagaki the following additional items:

gun, Cifu Pref.

<u>Item</u>	<u>Maximum Quantity</u>
1. Agricultural Implements	Unlimited
2. Wood Working Machines	"
3. Machines for Sawing	"
4. Repair of Various Machines	"
5. Machine Tools	"
6. Carts	"
7. Miner's Truck	"

(Nothing Follows)

2. The temporary use of the following additional reparations machinery is authorized:

See attached list of four (4) items.

(Nothing Follows)

3. A program will be immediately initiated to substitute non-reparations machinery for reparations machinery in temporary use.

4. The acquisition of material, parts and sub-assemblies as well as the disposition of finished products and the establishment of sales prices will be in accordance with the regulations of the Japanese Government.

5. This permit is issued subject to any and all directives affecting reparations plants which have been issued or may hereafter be issued by the Supreme Commander for the Allied Powers. Reports will be rendered as required by current directives and instructions.

FOR THE CHIEF, ECONOMIC AND SCIENTIFIC SECTION:

PAUL C. FEJII
 MAJOR GENERAL, USAF
 Acting Chief, Industry Division

incl 1

List of the Desired Reparation Designated
Machinery and Equipment According to this Application

<u>Name of items</u>	<u>Name of Mfg. Co.</u>	<u>Type and Dimension</u>	<u>Inventory No.</u>	<u>Operation or Idle</u>	<u>No. of Items</u>	<u>Remarks</u>
<u>Machine Tools</u>						
Lath	Self made	12' - 0"	09-13-4	Idle	1	
Drilling machine	"	20"	09-13-32	"	1	
Planer	Daikatsu Shokai & Co.	10' - 0"	09-13-78	"	1	
	Total				3	
<u>Secondary Metal forming and shaping machines</u>						
Disc grinder	Unknown	Dia. 350 mm	09-13-280	"	1	
	Total				1	
	Grand total				4 set	

Inventory completed
No adjustments necessary

List of inventoried Machines

Name of Plant K.K. Ogaki Tekkocho, Ogaki Kojo.

Date. 15 Oct 1948.

Inventory No.	Name of machine	Remarks
09-13-1	Back sawing machine	U
2	"	"
3	Lathe	S
4	"	"
5	"	"
6	"	U
7	"	"
8	"	"
9	"	"
10	"	"
11	"	S
12	"	"
13	"	"
14	"	"
15	"	"
16	"	U
17	"	"
18	"	"
19	"	"
20	"	"
21	"	"
22	"	S
23	"	"
24	"	"
25	"	"

<i>In. entry No.</i>	<i>Name of Machine</i>	<i>Remarks</i>
26	<i>Lathe</i>	<i>S</i>
27	<i>"</i>	<i>"</i>
28	<i>"</i>	<i>"</i>
29	<i>"</i>	<i>"</i>
30	<i>"</i>	<i>"</i>
31	<i>"</i>	<i>"</i>
32	<i>Drilling machine</i>	<i>"</i>
33	<i>"</i>	<i>"</i>
34	<i>"</i>	<i>"</i>
35	<i>"</i>	<i>"</i>
36	<i>Lathe</i>	<i>"</i>
37	<i>"</i>	<i>"</i>
38	<i>"</i>	<i>"</i>
39	<i>"</i>	<i>"</i>
40	<i>"</i>	<i>"</i>
41	<i>"</i>	<i>"</i>
42	<i>"</i>	<i>"</i>
43	<i>"</i>	<i>"</i>
44	<i>"</i>	<i>"</i>
45	<i>"</i>	<i>"</i>
46	<i>"</i>	<i>"</i>
47	<i>"</i>	<i>"</i>
48	<i>"</i>	<i>"</i>
49	<i>"</i>	<i>"</i>
50	<i>"</i>	<i>"</i>
51	<i>"</i>	<i>"</i>
52	<i>Threading machine</i>	<i>"</i>
53	<i>Lathe</i>	<i>"</i>
54	<i>"</i>	<i>"</i>

<i>Inventory No.</i>	<i>name of machine</i>	<i>Remarks</i>
55	Milling machine	S
56	"	"
57	Lathe	"
58	"	"
59	"	U
60	"	S
61	Turret Lathe	"
62	"	"
63	"	"
64	Lathe	"
65	"	"
66	"	"
67	"	"
68	"	"
69	"	"
70	"	"
71	"	"
72	"	"
73	"	"
74	"	"
75	"	"
76	"	"
77	Plano miller	"
78	Planer	"
79	Shaper	"
80	"	"
81	"	U
82	"	"
83	"	S

<i>Inventory No.</i>	<i>Name of machine</i>	<i>Remarks</i>
84	Planer	S
85	Shaper	"
86	"	"
87	"	"
88	Planer	U
89	"	S
90	"	"
91	"	"
92	Milling machine	"
93	"	"
94	"	"
95	"	"
96	Bench Milling machine	"
97	Gear Chamfering machine	U
98	Gear Cutting machine	"
99	Milling machine	S
100	Slotter	U
101	"	S
102	"	"
103	"	U
104	Radial Drilling machine	"
105	"	"
106	Drilling machine	S
107	"	"
108	Boring machine	"
109	Hack Sawing machine	"
110	Milling machine	"
111	"	U
112	Grinding machine	"

<i>Inventory No.</i>	<i>Name of Machine</i>	<i>Remarks</i>
113	Grinding Machine	U
114	Lathe	S
115	"	"
116	Grinding Machine	"
117	"	"
118	Drilling Machine	"
119	"	"
120	Lathe	U
121	"	"
122	"	"
123	"	"
124	"	S
125	"	U
126	"	"
127	"	S
128	"	"
129	"	"
130	"	"
131	"	U
132	"	S
133	"	"
134	"	U
135	"	S
136	"	"
137	"	"
138	"	"
139	"	"
140	"	"
141	"	"

<i>Inventory No.</i>	<i>Name of Machine</i>	<i>Remarks</i>
142	Lathe	S
143	"	"
144	"	"
145	"	"
146	"	"
147	"	"
148	"	U
149	Boring machine	"
150	Lathe	S
151	Bench Lathe	"
152	"	"
153	"	"
154	"	"
155	"	"
156	"	"
157	"	"
158	"	"
159	"	"
160	"	"
161	"	"
162	"	"
163	"	"
164	"	"
165	"	"
166	"	"
167	"	"
168	"	"
169	"	"
170	"	"

<i>Inventory No.</i>	<i>Name of Machine</i>	<i>Remarks</i>
171	Bench Lathe	S
172	"	"
173	"	"
174	"	"
175	Direct Current Generator	"
176	Gear Cutting Machine	"
177	Grinding Machine	U
178	"	S
179	Hack Sawing Machine	"
180	"	"
181	Lathe	"
182	"	"
183	"	"
184	Milling Machine	"
185	Lathe	U
186	"	S
187	Universal Lathe	"
188	"	"
189	Lathe	"
190	"	"
191	"	"
192	"	U
193	"	"
194	"	"
195	"	S
196	"	"
197	"	"
198	"	"
199	Direct Current Generator	"

Inventory No.	Name of Machine	Remarks
200	Bending Machine	S
201	Electric Welding Machine	"
202	Gear Tooth Testing Machine	"
203	Hardness Testing Machine	U
204	"	"
205	"	S
206	Air Compressor	U
207	Milling Machine	S
208	Bench Lathe	"
209	"	"
210	"	"
211	"	"
212	"	"
213	"	"
214	"	"
215	"	"
216	"	"
217	"	"
218	"	"
219	"	"
220	"	"
221	"	"
222	"	"
223	"	"
224	"	"
225	"	"
226	Shaper	"
227	"	"
228	Milling Machine	"

<i>Inventory No.</i>	<i>Name of Machine</i>	<i>Remarks</i>
229	Milling Machine	\$ U
230	"	S
231	"	"
232	"	"
233	"	U
234	"	S
235	"	"
236	Bench Lathe	"
237	"	"
238	"	"
239	"	"
240	"	"
241	"	"
242	Drilling Machine	U
243	"	"
244	Transformer	"
245	"	"
246	"	"
247	"	"
248	"	S
249	"	U
250	"	"
251	"	"
252	"	"
253	"	"
254	"	"
255	"	S
256	"	"
257	"	"

<i>Inventory No.</i>	<i>Name of Machine</i>	<i>Remarks</i>
258	Transformer	S
259	"	"
260	"	"
261	"	"
262	"	U
263	"	"
264	Switch Board	"
265	Electric Motor	S
266	"	"
267	"	"
268	"	"
269	"	"
270	Alligator Shear	U
271	Electric Motor	"
272	"	"
273	Disc Grinder	S
274	"	"
275	"	"
276	"	U
277	Electric Motor	S
278	Disc Grinder	"
279	"	"
280	"	"
281	Electric Motor	"
282	Disc Grinder	"
283	"	U
284	"	S
285	"	"
286	Electric Motor	"

Inventory No.	Name of Machine	Remarks
287	Disc Grinder	S
288	Electric Motor	"
289	Disc Grinder	"
290	Blower	"

Total U Machine	66.
" EX "	0.
" CPC "	0.
" SP "	0.
" S "	124.

Grand Total 290.
190

Sign. *J. P. Chassi*
Title. Director & Factory Manager.

1. plant Code number 09~13.
2. Plant name.
K.K. Ogaki Tokkosho, Ogaki Kajo.
3. Plant address.
480, Imajuku, Mikimura, Ampachigun,
Gifu pref.
4. plant Category.
Aircraft Industry.
5. plant of Establishment.
October 1st, 1906.

6. Product. (Monthly)

Description	Quantity	Amount.	No. of Employees
-------------	----------	---------	------------------

Pre-war

Machine tools.	30 set.	¥212,500.-	431
----------------	---------	------------	-----

War time.

Machine tools.	20 set.	¥220,000.-	
parts of air-craft bodies		¥180,000.-	875.

(during 13 months
from August 1944
till end of war.)

Present.

Agricultural machines

(oil presses, straw-
twisting machines,
straw softening mach.
etc) 75 set \$187500.-

Woodworking machines
(wood lathes saws, etc) 3 set \$45000.-

56.

Parts of vehicles
(wheels, etc.) 3000. \$195000.-

7. Date of reconversion permit (if any)
December 18 st. 1945.

8. No. of Assembly

<u>Pre-war.</u>	431.
<u>War time.</u>	875.
<u>Present.</u>	56.

9. Manager and Custodian

Director & Factory Manager.

Yutaka Ohashi

K. K. OGAKI TEKKOSHO

480 Imajuku, Mikimura
Ampachi Gun, Gifu Pref.

09-13

AIRCRAFT

ESTABLISHED : October 1, 1906

PRODUCTS

Pre-war : Machine Tools
Wartime : Machine Tools
Parts for aircraft bodies

Present : Agricultural Machines;
Woodworking Machines
Parts for vehicles

PRESENT STATUS: Operating 66 out of 290
Machines

*Not evaluated
all items not up to
824 Aug*

K. K. OGAKI TEKOSHO

09-13

Manager and custodian : Yutaka Ohashi

Employment

Pre-war	:	431
War-time	:	875
Present	:	56

Equipment classification

Total	:	290
Class I	:	136
Class II	:	143
Class III	:	11

Number of maintenance employees: 10

Number of guards: 5

TOTAL: 20

Approximate time required for dismantling and packing: 445 days

Recommended port for shipment: Nagoya

Total number of buildings: 44

Number of buildings released from reparations custody: 41

Ogaki Factory

INVENTORY SHEET

CODE NO.	TYPE	CL	LOC.TION	Stor age	Auth Use	SP	SP	CPC: Use O.F.	Temp Use	EX	Grand Tot.	Change Ref
09-13-1	Hack Sawing Machine		Ogaki Factory		✓							
09-13-2	Hack Sawing Machine		Ogaki Factory		✓							
09-13-3	Lathe		Ogaki Factory	✓								
09-13-4	Lathe		Ogaki Factory	✓								
09-13-5	Lathe		Ogaki Factory	✓								
09-13-6	Lathe		Ogaki Factory	✓	✓							
09-13-7	Lathe		Ogaki Factory	✓	✓							
09-13-8	Lathe		Ogaki Factory	✓	✓							
09-13-9	Lathe		Ogaki Factory	✓	✓							
09-13-10	Lathe		Ogaki Factory	✓	✓							
09-13-11	Lathe		Ogaki Factory	✓	✓							
09-13-12	Lathe		Ogaki Factory	✓	✓							
09-13-13	Lathe		Ogaki Factory	✓	✓							
09-13-14	Lathe		Ogaki Factory	✓	✓							
09-13-15	Lathe		Ogaki Factory	✓	✓							
09-13-16	Lathe		Ogaki Factory	✓	✓							
09-13-17	Lathe		Ogaki Factory	✓	✓							
09-13-18	Lathe		Ogaki Factory	✓	✓							
09-13-19	Lathe		Ogaki Factory	✓	✓							
09-13-20	Lathe		Ogaki Factory	✓	✓							
09-13-21	Lathe		Ogaki Factory	✓	✓							
09-13-22	Lathe		Ogaki Factory	✓	✓							
09-13-23	Lathe		Ogaki Factory	✓	✓							
09-13-24	Lathe		Ogaki Factory	✓	✓							
09-13-25	Lathe		Ogaki Factory	✓	✓							
09-13-26	Lathe		Ogaki Factory	✓	✓							
09-13-27	Lathe		Ogaki Factory	✓	✓							
09-13-28	Lathe		Ogaki Factory	✓	✓							
09-13-29	Lathe		Ogaki Factory	✓	✓							
09-13-30	Lathe		Ogaki Factory	✓	✓							
09-13-31	Lathe		Ogaki Factory	✓	✓							
TOTAL				18	13							

DECLASSIFIED E.O. 12065 SECTION 3-402/NNDG NO. 775013

INVENTORY SHEET

CODE NO.	TYPE	CL	LOCATION	Stcr age	Auth Use	SP	SP	CPC	Use O.F.	Temp Use	EX	Grand Tot.	Change Ref
09-13-32	Drilling Machine		Ogaki Factory	✓									
09-13-33	Drilling Machine		Ogaki Factory	✓									
09-13-34	Drilling Machine		Ogaki Factory	✓									
09-13-35	Drilling Machine		Ogaki Factory	✓									
09-13-36	Lathe		Ogaki Factory	✓									
09-13-37	Lathe		Ogaki Factory	✓									
09-13-38	Lathe		Ogaki Factory	✓									
09-13-39	Lathe		Ogaki Factory	✓									
09-13-40	Lathe		Ogaki Factory	✓									
09-13-41	Lathe		Ogaki Factory	✓									
09-13-42	Lathe		Ogaki Factory	✓									
09-13-43	Lathe		Ogaki Factory	✓									
09-13-44	Lathe		Ogaki Factory	✓									
09-13-45	Lathe		Ogaki Factory	✓									
09-13-46	Lathe		Ogaki Factory	✓									
09-13-47	Lathe		Ogaki Factory	✓									
09-13-48	Lathe		Ogaki Factory	✓									
09-13-49	Lathe		Ogaki Factory	✓									
09-13-50	Lathe		Ogaki Factory	✓									
09-13-51	Lathe		Ogaki Factory	✓									
09-13-52	Threading Machine		Ogaki Factory	✓									
09-13-53	Lathe		Ogaki Factory	✓									
09-13-54	Lathe		Ogaki Factory	✓									
09-13-55	Milling Machine		Ogaki Factory	✓									
09-13-56	Milling Machine		Ogaki Factory	✓									
09-13-57	Lathe		Ogaki Factory	✓									
09-13-58	Lathe		Ogaki Factory	✓									
09-13-59	Lathe		Ogaki Factory	✓									
09-13-60	Lathe		Ogaki Factory	✓									
09-13-61	Turret Lathe		Ogaki Factory	✓									
09-13-62	Turret Lathe		Ogaki Factory	✓									
TOTAL				30	1								

DECLASSIFIED E.O. 12065 SECTION 3-402/NNDC NO. 775013

INVENTORY SHEET

CODE NO.	TYPE	CL	LOCATION	Stor age	Auth Use	SP	SP	CPC	Use O.F.	Temp Use	EX	Grand Tot.	Change Ref
09-13-63	Turret Lathe		Ogaki Factory	✓									
09-13-64	Lathe		Ogaki Factory	✓									
09-13-65	Lathe		Ogaki Factory	✓									
09-13-66	Lathe		Ogaki Factory	✓									
09-13-67	Lathe		Ogaki Factory	✓									
09-13-68	Lathe		Ogaki Factory	✓									
09-13-69	Lathe		Ogaki Factory	✓									
09-13-70	Lathe		Ogaki Factory	✓									
09-13-71	Lathe		Ogaki Factory	✓									
09-13-72	Lathe		Ogaki Factory	✓									
09-13-73	Lathe		Ogaki Factory	✓									
09-13-74	Lathe		Ogaki Factory	✓									
09-13-75	Lathe		Ogaki Factory	✓									
09-13-76	Lathe		Ogaki Factory	✓									
09-13-77	Plano Miller		Ogaki Factory	✓									
09-13-78	Planer		Ogaki Factory	✓									
09-13-79	Shaper		Ogaki Factory	✓									
09-13-80	Shaper		Ogaki Factory	✓									
09-13-81	Shaper		Ogaki Factory		✓								
09-13-82	Shaper		Ogaki Factory		✓								
09-13-83	Shaper		Ogaki Factory	✓									
09-13-84	Planer		Ogaki Factory	✓									
09-13-85	Shaper		Ogaki Factory	✓									
09-13-86	Shaper		Ogaki Factory	✓									
09-13-87	Shaper		Ogaki Factory	✓									
09-13-88	Planer		Ogaki Factory		✓								
09-13-89	Planer		Ogaki Factory	✓									
09-13-90	Planer		Ogaki Factory	✓									
09-13-91	Planer		Ogaki Factory	✓									
09-13-92	Milling Machine		Ogaki Factory	✓									
09-13-93	Milling Machine		Ogaki Factory	✓									
09-13-94	Milling Machine		Ogaki Factory	✓									
TOTAL				27	3								

DECLASSIFIED E.O. 12065 SECTION 3-402/NNDG NO. 775013

INVENTORY SHEET

CODE NO.	TYPE	CL.	LOCATION	Str age	Auth Use	SP	SP	CPC	Use O.F.	Temp Use	EX	Grand Tot.	Change Ref
09-13-95	Milling Machine		Ogaki Factory	✓									
09-13-96	Bench Milling Machine		Ogaki Factory	✓									
09-13-97	Gear Chamfring Machine		Ogaki Factory		✓								
09-13-98	Gear Cutting Machine		Ogaki Factory		✓								
09-13-99	Milling Machine		Ogaki Factory	✓									
09-13-100	Slotter		Ogaki Factory		✓								
09-13-101	Slotter		Ogaki Factory	✓									
09-13-102	Slotter		Ogaki Factory	✓									
09-13-103	Slotter		Ogaki Factory		✓								
09-13-104	Radial Drilling Machine		Ogaki Factory		✓								
09-13-105	Radial Drilling Machine		Ogaki Factory		✓								
09-13-106	Drilling Machine		Ogaki Factory	✓									
09-13-107	Drilling Machine		Ogaki Factory	✓									
09-13-108	Boring Machine		Ogaki Factory	✓									
09-13-109	Hack Sawing Machine		Ogaki Factory	✓									
09-13-110	Milling Machine		Ogaki Factory	✓									
09-13-111	Milling Machine		Ogaki Factory		✓								
09-13-112	Grinding Machine		Ogaki Factory		✓								
09-13-113	Grinding Machine		Ogaki Factory		✓								
09-13-114	Lathe		Ogaki Factory	✓									
09-13-115	Lathe		Ogaki Factory	✓									
09-13-116	Grinding Machine		Ogaki Factory	✓									
09-13-117	Grinding Machine		Ogaki Factory	✓									
09-13-118	Drilling Machine		Ogaki Factory	✓									
09-13-119	Drilling Machine		Ogaki Factory	✓									
09-13-120	Lathe		Ogaki Factory		✓								
09-13-121	Lathe		Ogaki Factory		✓								
09-13-122	Lathe		Ogaki Factory		✓								
09-13-123	Lathe		Ogaki Factory		✓								
09-13-124	Lathe		Ogaki Factory	✓									
09-13-125	Lathe		Ogaki Factory		✓								
TOTAL				17	14								

DECLASSIFIED E.O. 12065 SECTION 3-402/NNDC NO. 775013

INVENTORY SHEET

CODE NO.	TYPE	CL	LOCATION	Stcr age	Auth Use	SP	SP	CPC	Use O.F.	Temp Use	EX	Grand Tot.	Change Ref
09-13-126	Lathe		Ogaki Factory		✓								
09-13-127	Lathe		Ogaki Factory	✓									
09-13-128	Lathe		Ogaki Factory	✓									
09-13-129	Lathe		Ogaki Factory	✓									
09-13-130	Lathe		Ogaki Factory	✓									
09-13-131	Lathe		Ogaki Factory	✓	✓								
09-13-132	Lathe		Ogaki Factory	✓									
09-13-133	Lathe		Ogaki Factory	✓									
09-13-134	Lathe		Ogaki Factory	✓	✓								
09-13-135	Lathe		Ogaki Factory	✓									
09-13-136	Lathe		Ogaki Factory	✓									
09-13-137	Lathe		Ogaki Factory	✓									
09-13-138	Lathe		Ogaki Factory	✓									
09-13-139	Lathe		Ogaki Factory	✓									
09-13-140	Lathe		Ogaki Factory	✓									
09-13-141	Lathe		Ogaki Factory	✓									
09-13-142	Lathe		Ogaki Factory	✓									
09-13-143	Lathe		Ogaki Factory	✓									
09-13-144	Lathe		Ogaki Factory	✓									
09-13-145	Lathe		Ogaki Factory	✓									
09-13-146	Lathe		Ogaki Factory	✓									
09-13-147	Lathe		Ogaki Factory	✓									
09-13-148	Lathe		Ogaki Factory	✓	✓								
09-13-149	Boring Machine		Ogaki Factory	✓	✓								
09-13-150	Lathe		Ogaki Factory	✓									
09-13-151	Bench Lathe		Ogaki Factory	✓									
09-13-152	Bench Lathe		Ogaki Factory	✓									
09-13-153	Bench Lathe		Ogaki Factory	✓									
09-13-154	Bench Lathe		Ogaki Factory	✓									
09-13-155	Bench Lathe		Ogaki Factory	✓									
09-13-156	Bench Lathe		Ogaki Factory	✓									
TOTAL				26	5								

DECLASSIFIED E.O. 12065 SECTION 3-402/NNDC NO. 775013

INVENTORY SHEET

CODE NO.	TYPE	CL	LOCATION	Stor age	Auth Use	SP	SP	CPC	Use O.F.	Temp Use	EX	Grand Tot.	Change Ref
09-13-157	Bench Lathe		Ogaki Factory	✓									
09-13-158	Bench Lathe		Ogaki Factory	✓									
09-13-159	Bench Lathe		Ogaki Factory	✓									
09-13-160	Bench Lathe		Ogaki Factory	✓									
09-13-161	Bench Lathe		Ogaki Factory	✓									
09-13-162	Bench Lathe		Ogaki Factory	✓									
09-13-163	Bench Lathe		Ogaki Factory	✓									
09-13-164	Bench Lathe		Ogaki Factory	✓									
09-13-165	Bench Lathe		Ogaki Factory	✓									
09-13-166	Bench Lathe		Ogaki Factory	✓									
09-13-167	Bench Lathe		Ogaki Factory	✓									
09-13-168	Bench Lathe		Ogaki Factory	✓									
09-13-169	Bench Lathe		Ogaki Factory	✓									
09-13-170	Bench Lathe		Ogaki Factory	✓									
09-13-171	Bench Lathe		Ogaki Factory	✓									
09-13-172	Bench Lathe		Ogaki Factory	✓									
09-13-173	Bench Lathe		Ogaki Factory	✓									
09-13-174	Bench Lathe		Ogaki Factory	✓									
09-13-175	Direct Current Generator		Ogaki Factory	✓									
09-13-176	Gear Cutting Machine		Ogaki Factory	✓									
09-13-177	Grinding Machine		Ogaki Factory	✓	✓								
09-13-178	Grinding Machine		Ogaki Factory	✓									
09-13-179	Hack Sawing Machine		Ogaki Factory	✓									
09-13-180	Hack Sawing Machine		Ogaki Factory	✓									
09-13-181	Lathe		Ogaki Factory	✓									
09-13-182	Lathe		Ogaki Factory	✓									
09-13-183	Lathe		Ogaki Factory	✓									
09-13-184	Milling Machine		Ogaki Factory	✓									
09-13-185	Lathe		Ogaki Factory	✓	✓								
09-13-186	Lathe		Ogaki Factory	✓									
09-13-187	Univesal Lathe		Ogaki Factory	✓									
TOTAL				29	7								

DECLASSIFIED E.O. 12065 SECTION 3-402/NNDC NO. 775013

INVENTORY SHEET

CODE NO.	TYPE	CL.	LOCATION	Stor age	Auth Use	SP	SP	CPC	Use O.F.	Temp Use	EX	Grand Tot.	Change Ref
09-13-188	Univesal Lathe		Ogaki Factory	✓									
09-13-189	Lathe		Ogaki Factory	✓									
09-13-190	Lathe		Ogaki Factory	✓									
09-13-191	Lathe		Ogaki Factory	✓									
09-13-192	Lathe		Ogaki Factory		✓								
09-13-193	Lathe		Ogaki Factory		✓								
09-13-194	Lathe		Ogaki Factory		✓								
09-13-195	Lathe		Ogaki Factory	✓									
09-13-196	Lathe		Ogaki Factory	✓									
09-13-197	Lathe		Ogaki Factory	✓									
09-13-198	Lathe		Ogaki Factory	✓									
09-13-199	Direct Current Generator		Ogaki Factory	✓									
09-13-200	Bending Machine		Ogaki Factory	✓									
09-13-201	Electric Welding Machine		Ogaki Factory	✓									
09-13-202	Gear Tooth Testing Machine		Ogaki Factory	✓									
09-13-203	Hardness Testing Machine		Ogaki Factory		✓								
09-13-204	Hardness Testing Machine		Ogaki Factory		✓								
09-13-205	Hardness Testing Machine		Ogaki Factory	✓									
09-13-206	Air Compressor		Ogaki Factory		✓								
09-13-207	Milling Machine		Ogaki Factory	✓									
09-13-208	Bench Lathe		Ogaki Factory	✓									
09-13-209	Bench Lathe		Ogaki Factory	✓									
09-13-210	Bench Lathe		Ogaki Factory	✓									
09-13-211	Bench Lathe		Ogaki Factory	✓									
09-13-212	Bench Lathe		Ogaki Factory	✓									
09-13-213	Bench Lathe		Ogaki Factory	✓									
09-13-214	Bench Lathe		Ogaki Factory	✓									
09-13-215	Bench Lathe		Ogaki Factory	✓									
09-13-216	Bench Lathe		Ogaki Factory	✓									
09-13-217	Bench Lathe		Ogaki Factory	✓									
09-13-218	Bench Lathe		Ogaki Factory	✓									
TOTAL				25	6								

DECLASSIFIED E.O. 12065 SECTION 3-402/NNDG NO. 775013

INVENTORY SHEET

CODE NO.	TYPE	CL.	LOCATION	Storage	Auth Use	SP	SP	CPC	Use O.F.	Temp Use	EX	Grand Tot.	Change Ref
09-13-219	Bench Lathe		Ogaki Factory	✓									
09-13-220	Bench Lathe		Ogaki Factory	✓									
09-13-221	Bench Lathe		Ogaki Factory	✓									
09-13-222	Bench Lathe		Ogaki Factory	✓									
09-13-223	Bench Lathe		Ogaki Factory	✓									
09-13-224	Bench Lathe		Ogaki Factory	✓									
09-13-225	Bench Lathe		Ogaki Factory	✓									
09-13-226	Shaper		Ogaki Factory	✓									
09-13-227	Shaper		Ogaki Factory	✓									
09-13-228	Milling Machine		Ogaki Factory	✓	✓								
09-13-229	Milling Machine		Ogaki Factory	✓	✓								
09-13-230	Milling Machine		Ogaki Factory	✓	✓								
09-13-231	Milling Machine		Ogaki Factory	✓	✓								
09-13-232	Milling Machine		Ogaki Factory	✓	✓								
09-13-233	Milling Machine		Ogaki Factory	✓	✓								
09-13-234	Milling Machine		Ogaki Factory	✓	✓								
09-13-235	Milling Machine		Ogaki Factory	✓	✓								
09-13-236	Bench Lathe		Ogaki Factory	✓	✓								
09-13-237	Bench Lathe		Ogaki Factory	✓	✓								
09-13-238	Bench Lathe		Ogaki Factory	✓	✓								
09-13-239	Bench Lathe		Ogaki Factory	✓	✓								
09-13-240	Bench Lathe		Ogaki Factory	✓	✓								
09-13-241	Bench Lathe		Ogaki Factory	✓	✓								
09-13-242	Drilling Machine		Ogaki Factory	✓	✓								
09-13-243	Drilling Machine		Ogaki Factory	✓	✓								
09-13-244	Transformer		Ogaki Factory	✓	✓								
09-13-245	Transformer		Ogaki Factory	✓	✓								
09-13-246	Transformer		Ogaki Factory	✓	✓								
09-13-247	Transformer		Ogaki Factory	✓	✓								
09-13-248	Transformer		Ogaki Factory	✓	✓								
09-13-249	Transformer		Ogaki Factory	✓	✓								
09-13-250	Transformer		Ogaki Factory	✓	✓								
TOTAL				22	10								

DECLASSIFIED E.O. 12065 SECTION 3-402/NNDG NO. 775013

INVENTORY SHEET

CODE NO.	TYPE	CL	LOCATION	Stor age	Auth Use	SP	SP	CPC	Use O.F.	Temp Use	EX	Grand Tot.	Change Ref
09-13-251	Transformer		Ogaki Factory		✓								
09-13-252	Transformer		Ogaki Factory		✓								
09-13-253	Transformer		Ogaki Factory		✓								
09-13-254	Transformer		Ogaki Factory		✓								
09-13-255	Transformer		Ogaki Factory	✓									
09-13-256	Transformer		Ogaki Factory	✓									
09-13-257	Transformer		Ogaki Factory	✓									
09-13-258	Transformer		Ogaki Factory	✓									
09-13-259	Transformer		Ogaki Factory	✓									
09-13-260	Transformer		Ogaki Factory	✓									
09-13-261	Transformer		Ogaki Factory	✓									
09-13-262	Transformer		Ogaki Factory		✓								
09-13-263	Transformer		Ogaki Factory		✓								
09-13-264	Switch Board		Ogaki Factory		✓								
09-13-265	Electric Motor		Ogaki Factory	✓									
09-13-266	Electric Motor		Ogaki Factory	✓									
09-13-267	Electric Motor		Ogaki Factory	✓									
09-13-268	Electric Motor		Ogaki Factory	✓									
09-13-269	Electric Motor		Ogaki Factory	✓									
09-13-270	Alligator Shear		Ogaki Factory		✓								
09-13-271	Electric Motor		Ogaki Factory		✓								
09-13-272	Electric Motor		Ogaki Factory		✓								
09-13-273	Disc Grinder		Ogaki Factory	✓									
09-13-274	Disc Grinder		Ogaki Factory	✓									
09-13-275	Disc Grinder		Ogaki Factory	✓									
09-13-276	Disc Grinder		Ogaki Factory		✓								
09-13-277	Electric Motor		Ogaki Factory	✓									
09-13-278	Disc Grinder		Ogaki Factory	✓									
09-13-279	Disc Grinder		Ogaki Factory	✓									
09-13-280	Disc Grinder		Ogaki Factory	✓									
09-13-281	Electric Motor		Ogaki Factory	✓									
09-13-282	Disc Grinder		Ogaki Factory	✓									
TOTAL				21	11								

DECLASSIFIED E.O. 12065 SECTION 3-402/NNDC NO. 775013

INVENTORY SHEET

CODE NO.	TYPE	CL.	LOCATION	Stor age	Auth Use	SP	SP	CPC	Use O.F.	Temp Use	EX	Grand Tot.	Change Ref
09-13-283	Disc Grinder		Ogaki Factory		✓								
09-13-284	Disc Grinder		Ogaki Factory	✓									
09-13-285	Disc Grinder		Ogaki Factory	✓									
09-13-286	Electric Motor		Ogaki Factory	✓									
09-13-287	Disc Grinder		Ogaki Factory	✓									
09-13-288	Electric Motor		Ogaki Factory	✓									
09-13-289	Disc Grinder		Ogaki Factory	✓									
09-13-290	Blower		Ogaki Factory	✓									
09-13-291	Internal Combustion Engine		Ogaki Factory										90-129 (dropped)
TOTAL				224	66	0	0	0	0	0	0	290	

DECLASSIFIED E.O. 12065 SECTION 3-402/NNDC NO. 775013

Company & Plant Name: Ogaki Plant, Ogaki Tetsukasho Co., Ltd.

Address of Plant: No.480, Imajuku, Miki-mura, Anpschi-gun, Gifu-pref.

Name	Quantity	
	Not in operation	In operation
Outside Micrometers	52	16 ⁶⁸
Inside Micrometers	10	2 ¹²
Thread Micrometers	2	0
Vernier Calipers	21	15
Depth Gauges	0	3
Universal Protractors	2	0
Dial Indicators	18	4
Surface Plates	11	2
2 H.P. Alternating Current Motors	8	0
5 H.P. Direct " "	5	0
1 H.P. Direct " "	10	0
Vertical Attachment	2	0
Circular Tables	1	1
Machine Vice	2	2
Line Shaft	19	5
Box Block	6	0
Screw Jack	30	0
Vice	27	0
Straight Edge	5	0
Surface Gauge	20	11
Shaft Coupling	17	4

<u>Name</u>	<u>Quantity</u>	
	<u>Not in operation</u>	<u>In operation</u>
Shell Reamers	2	0
End Mill Cutter	1	0
Taper Reamers	125	0
Shell End Mills	3	0
Plug Gauges	175	0
Snap Gauges	62	0
Bellows Gear Cutters	5	0
Lathe Centers	150	0
Drill Chuck	1	0
Screw Plug Gauges	22	0
Set files	46	0
Files	505	0

-2-

Name	Quantity	
	Not in operation	in operation
Pully	66	31
Hanger	35	10
Weigh Beam	1	0
Steel Rules	17	15
Round Dies	130	0
Drills	1,263	0
Reamers	23	0
Metal saws	10	0
Outside Calipers	60	42
Inside Calipers	70	42
Wire Gauges	2	1
Drill Sockets	29	10
Thickness Gauges	15	2
Screw Pitch Gauge	0	1
Radius Gauges	9	3
Hand Taps	552	0
Bit Holder	0	1
Plain Cutters	18	0
Gear Hobs	6	0
Side Cutters	12	0
Angular Cutters	11	0
Bits	70	0
Center Drills	141	0
Dighead Chasers	27	0

Code No.

Name

Quantity

*Copy of 129 - serial 09-13-291 EX
from up area*

Substitute gas engine

1 set

09-13-292

Alternating current motor

1

293

"

1

294

"

1

295

"

1

296

"

1

297

"

1

298

"

1

299

"

1

300

Direct current motor

1

301

"

1

302

"

1

303

"

1

304

"

1

305

"

1

306

"

1

307

"

1

308

"

1

309

"

1

310

"

1

311

"

1

312

"

1

313

"

1

314

"

1

315

Plug gage

1 set (29 Items)

*X This serial
antiquated
See later inventory*

Inclosure I

Code No.	Name	Quantity
09-13-291 EX	Substitute gas engine	1 set
292	Alternating current motor	1
293	"	1
294	"	1
295	"	1
296	"	1
297	"	1
298	"	1
299	"	1
300	Direct current motor	1
301	"	1
302	"	1
303	"	1
304	"	1
305	"	1
306	"	1
307	"	1
308	"	1
309	"	1
310	"	1
311	"	1
312	"	1
313	"	1
314	"	1
315	Plug gage	1 set (29 Items)

Inclosure I

Code No.	Name	Quantity
09-13-291 EX	Substitute gas engine	1 set
292	Alternating current motor	1
293	"	1
294	"	1
295	"	1
296	"	1
297	"	1
298	"	1
299	"	1
300	Direct current motor	1
301	"	1
302	"	1
303	"	1
304	"	1
305	"	1
306	"	1
307	"	1
308	"	1
309	"	1
310	"	1
311	"	1
312	"	1
313	"	1
314	"	1
315	Plug gage	1 set (29 Items)

Inclosure I

Code No.	Name	Quantity
09-13-291 BX	Substitute gas engine	1 set
292	Alternating current motor	1
293	"	1
294	"	1
295	"	1
296	"	1
297	"	1
298	"	1
299	"	1
300	Direct current motor	1
301	"	1
302	"	1
303	"	1
304	"	1
305	"	1
306	"	1
307	"	1
308	"	1
309	"	1
310	"	1
311	"	1
312	"	1
313	"	1
314	"	1
315	Plug gage	1 set (29 Items)

Inclosure 1

Code No.	Name	Quantity
09-13-291 KX	Substitute gas engine	1 set
292	Alternating current motor	1
293	"	1
294	"	1
295	"	1
296	"	1
297	"	1
298	"	1
299	"	1
300	Direct current motor	1
301	"	1
302	"	1
303	"	1
304	"	1
305	"	1
306	"	1
307	"	1
308	"	1
309	"	1
310	"	1
311	"	1
312	"	1
313	"	1
314	"	1
315	Plug gage	1 set (29 items)

Inclosure I

Code No.	Name	Quantity
09-13-291 XI	Substitute gas engine	1 set
292	Alternating current motor	1
293	"	1
294	"	1
295	"	1
296	"	1
297	"	1
298	"	1
299	"	1
300	Direct current motor	1
301	"	1
302	"	1
303	"	1
304	"	1
305	"	1
306	"	1
307	"	1
308	"	1
309	"	1
310	"	1
311	"	1
312	"	1
313	"	1
314	"	1
315	Plug gage	1 set (29 Items)

Inclosure I

Code No.	Name	Quantity
09-13-291 BX	Substitute gas engine	1 set
292	Alternating current motor	1
293	"	1
294	"	1
295	"	1
296	"	1
297	"	1
298	"	1
299	"	1
300	Direct current motor	1
301	"	1
302	"	1
303	"	1
304	"	1
305	"	1
306	"	1
307	"	1
308	"	1
309	"	1
310	"	1
311	"	1
312	"	1
313	"	1
314	"	1
315	Plug gage	1 set (29 Items)

Inclosure I

Code No.	Name	Quantity
09-13-316	Plug gage	1 set (19 Items)
317	"	1 set (27 Items)
318	Pyrometer	1
319	"	1
320	"	1
321	Direct current ammeter	1
322	Alternating current ammeter	1
323	Micrometer	44
"	Thread micrometer	2
"	Universal test dial indicator	1
"	Dial indicator	21
"	Speed indicator	2
"	Test bar	1
324	Snap gage	62
325	Sliding rheostat	4
326	Condenser	26
327	Holder of dial indicator	14
328	Vernier height gage	1
329	Micrometer	24
"	Inside micrometer	10
330	Main shaft	2
331	Line shaft	4

Code No.	Name	Quantity
09-13-316	Plug gage	1 set (19 Items)
317	"	1 set (27 Items)
318	Pyrometer	1
319	"	1
320	"	1
321	Direct current ammeter	1
322	Alternating current ammeter	1
323	Micrometer	44
"	Thread micrometer	2
"	Universal test dial indicator	1
"	Dial indicator	21
"	Speed indicator	2
"	Test bar	1
324	Snap gage	62
325	Sliding rheostat	4
326	Condenser	26
327	Holder of dial indicator	14
328	Vernier height gage	1
329	Micrometer	24
"	Inside micrometer	10
330	Main shaft	2
331	Line shaft	4

Code No.	Name	Quantity
09-13-316	Plug gage	1 set (19 Items)
317	"	1 set (27 Items)
318	Pyrometer	1
319	"	1
320	"	1
321	Direct current ammeter	1
322	Alternating current ammeter	1
323	Micrometer	44
"	Thread micrometer	2
"	Universal test dial indicator	1
"	Dial indicator	21
"	Speed indicator	2
"	Test bar	1
324	Snap gage	62
325	Sliding rheostat	4
326	Condenser	26
327	Holder of dial indicator	14
328	Vernier height gage	1
329	Micrometer	24
"	Inside micrometer	10
330	Main shaft	2
331	Line shaft	4

Code No.	Name	Quantity
09-13-316	Plug gage	1 set (19 Items)
317	"	1 set (27 Items)
318	Pyrometer	1
319	"	1
320	"	1
321	Direct current ammeter	1
322	Alternating current ammeter	1
323	Micrometer	44
"	Thread micrometer	2
"	Universal test dial indicator	1
"	Dial indicator	21
"	Speed indicator	2
"	Test bar	1
334	Snap gage	62
325	Sliding rheostat	4
326	Condenser	26
327	Holder of dial indicator	14
328	Vernier height gage	1
329	Micrometer	24
"	Inside micrometer	10
330	Main shaft	2
331	Line shaft	4

Code No.	Name	Quantity
09-13-316	Plug gage	1 set (19 Items)
317	"	1 set (27 Items)
318	Pyrometer	1
319	"	1
320	"	1
321	Direct current ammeter	1
322	Alternating current ammeter	1
323	Micrometer	44
"	Thread micrometer	2
"	Universal test dial indicator	1
"	Dial indicator	21
"	Speed indicator	2
"	Test bar	1
324	Snap gage	62
325	Sliding rheostat	4
326	Condenser	26
327	Holder of dial indicator	14
328	Vernier height gage	1
329	Micrometer	24
"	Inside micrometer	10
330	Main shaft	2
331	Line shaft	4

Code No.	Name	Quantity
09-13-316	Plug gage	1 set (19 items)
317	"	1 set (27 items)
318	Pyrometer	1
319	"	1
320	"	1
321	Direct current ammeter	1
322	Alternating current ammeter	1
323	Micrometer	44
"	Thread micrometer	2
"	Universal test dial indicator	1
"	Dial indicator	21
"	Speed indicator	2
"	Test bar	1
324	Snap gage	62
325	Sliding rheostat	4
326	Condenser	26
327	Holder of dial indicator	14
328	Vernier height gage	1
329	Micrometer	24
"	Inside micrometer	10
330	Main shaft	2
331	Line shaft	4

Code No.	Name	Quantity
09-13-316	Plug gage	1 set (19 Items)
317	"	1 set (27 Items)
318	Pyrometer	1
319	"	1
320	"	1
321	Direct current ammeter	1
322	Alternating current ammeter	1
323	Micrometer	44
"	Thread micrometer	2
"	Universal test dial indicator	1
"	Dial indicator	21
"	Speed indicator	2
"	Test bar	1
324	Snap gage	62
325	Sliding rheostat	4
326	Condenser	26
327	Holder of dial indicator	14
328	Vernier height gage	1
329	Micrometer	24
"	Inside micrometer	10
330	Main shaft	2
331	Line shaft	4

List of new inventoried machines

Company & plant name: Ogaki plant Ogaki Tetsukosho Co. Ltd.
 Address of plant No. 480, Imajuku, Mikimura, Aoyachi gun. Gifu pref.

Code No.	Name	Quantity	Remark
0913-291	Substitute gas engine	1 set	(E.X.)
292	Alternating current motor	1	
293	"	1	
294	"	1	
295	"	1	
296	"	1	
297	"	1	
298	"	1	
299	"	1	
300	Direct current motor	1	
301	"	1	
302	"	1	
303	"	1	
304	"	1	
305	"	1	
306	"	1	
307	"	1	
308	"	1	

⑦

2
I

(1)

Code No.	Name	Quantity	Remark
09-13-309	Direct current motor	1	
310	"	1	
311	"	1	
312	"	1	
313	"	1	
314	"	1	
315	Plug gage	1 ^{set}	(29 Items)
316	"	1 ^{set}	(19 Items)
317	"	1 ^{set}	(27 Items)
318	Pyrometer	1	
319	"	1	
320	"	1	
321	Direct current ammeter	1	
322	Alternating current ammeter	1	
323	Micrometer	44	
"	Thread micrometer	2	
"	Universal test dial indicator	1	
"	Dial indicator	21	
"	Speed indicator	2	
"	Test bar	1	

Code No.	Name	Quantity	Remark
09-13-324	Snap gage	62	
325	Sliding rheostat	4	
326	Condenser	26	
327	Holder of dial indicator	14	
328	Vernier height gage	1	
329	Micrometer	24	
"	Inside micrometer	10	
330	Main shaft	2	
331	Line shaft	4	

F. Satake.

F 4.13

Monthly Production report
of Industrial facilities

File No: 111
 To: Gifu Mil. Gov.
 From: _____
 Date: 31 May 49.

1. Name of facility: K.K. Ogaki Tekkosho, Ogaki-cho
2. Location: No. 480 Imayasu Miki-mura, Amate-gun, Gifu-ken
3. Name of president or manager: Mr. Yutaka Okashi.
4. Reconversion permit No: Gifu prefectural order sho-2498
 Dated: 18 Dec, 1945.
5. Name and Address of parent Co.: None
6. Present Capitalization in Yen: ¥4,000,000
7. No. of Employees: No. 46
8. Machinery and Equipment in plant

Description	Quantity	Condition
Lathes	155	25 in use
Drilling machines	12	4 " "
Boring machines	2	1 " "
Grinding machines	6	3 " "
Milling machines	21	3 " "
Gear Hopping machines	2	1 " "
Planers	6	1 " "
Shapers	10	2 " "
Slotting machines	4	2 " "
Metal Sawing machines	5	2 " "
Gear tooth Chamfering Machine	1	1 " "
Industrial Machines	17	4 " "
Electrical Machines	35	15 " "
Precision measuring Machines	4	2 " "

9. Present stock of Raw materials supplied and Unfinished goods.

Description	Quantity	Condition
Materials		
Steel	0.4 ton	
Special steel	34.0 ton	
Pig iron	0.5 ton	
Scrap pig-iron	3.0 ton	
Unfinished goods:		
Agricultural Machines	20. st	

10. Acquisition of Raw material
- | Description | Quantity | Source |
|-------------|----------|--------|
| None | | |

11. Present stock of fuel:

Description	quantity
Coke for forging	5.0 ton
Charcoal	0.3 ton

12. Fuel needed monthly:

Description	quantity
Coke for forging	7.5 ton
Coke for casting	5 ton
Charcoal	300 kg
Wood	80 packages

13. Products:

Description	quantity
Agricultural machines	10 set
Repairs	36 set

14. Prices:

Description	unit	Price
Agricultural machine	1 set	¥ 2,700-
Repairs	1 set	¥ 350-

15. Disposition of finished goods:

Description	quantity	Source of Sale
Agricultural machines	5 set	Kawanami-mura A.A. etc.
Repairs	1 set	Takigami Kogyo Co. Ltd.

16. Present stock of finished goods:

Description	quantity	Condition
Agricultural machines	70 set	
wood working machines	3 set	

17. Remarks:

Signed: Yutaka Ohashi
 Title: Director and Factory Manager

F 4.13

Monthly Production report
of Industrial facilities

File No: 111
 To: Gifu Mil. Gov.
 From: _____
 Date: 30 Apr. 49

1. Name of facility: K. K. Ogaki Tekkosho, Ogaki-kojy
2. Location: No. 480 Imajuku Maki-mura Ampati-gun, Gifu-ken
3. Name of president or manager: Mr. Yutaka Ohashi.
4. Reconversion permit No: Gifu prefectural order sho-2478
 Dated: 18 Dec. 1945.
5. Name and Address of parent Co.: None
6. Present Capitalization in Yen: ¥4,000,000
7. No. of Employees: No. 46
8. Machinery and Equipment in plant

Description	quantity	Condition		
		25	in	use
Lathes	165	4	"	"
Drilling Machines	12	1	"	"
Boring Machines	2	3	"	"
Grinding Machines	6	3	"	"
Milling Machines	21	1	"	"
Gear Hopping Machines	2	1	"	"
Planers	6	2	"	"
Shapers	10	2	"	"
Slotting Machines	4	2	"	"
Metal Sawing Machines	5	1	"	"
Gear tooth Chamfering Machine	1	4	"	"
Industrial Machines	17	15	"	"
Electrical Machines	35	2	"	"
Precision Measuring Machines	4			

9. Present stock of Raw materials Supplied and Unfinished goods
- | Description | quantity | Condition |
|-----------------------|----------|-----------|
| Materials | | |
| Steel | 0.5 ton | |
| Special steel | 35.0 ton | |
| Pig iron | 0.5 ton | |
| Scrap pig-iron | 3.0 ton | |
| Unfinished goods: | | |
| Agricultural Machines | 20. set | |

10. Acquisition of Raw Material
- | Description | quantity | Source |
|-------------|----------|--------|
| None | | |

11. Present stock of fuel:

Description	quantity
Coke for forging	2 ton
Charcoal	0.5 ton

12. Fuel needed monthly:

Description	quantity
Coke for forging	2.5 ton
Coke for Casting	5 ton
Charcoal	300 kg
Wood	80 packages

13. Products:

Description	quantity
Agricultural Machines	40 set
Repaires	25 set

14. Prices:

Description	Unit	Price
Agricultural Machine	1 set	¥ 3,700.-
Repaires	1 set	¥ 4,200.-

15. Disposition of finished goods:

Description	quantity	source of Sale
Agricultural Machines	43 set	Minami Hirono-ura
Repaire	25 set	Nippon-Shokki Co.

16. Present stock of finished goods:

Description	quantity	Condition
Agricultural Machine	65 set	
wood marking Machines	3 set	

17. Remarks:

Signed: _____
 Title = Director and Factory Manager.

Monthly Production report
of Industrial facilities

File No.: 111
 To: Gifu Mil. Gov.
 Thru: _____
 Date: 31. Mar. 49.

1. Name of facility: K.K. Ogaki Tekkocho, Ogaki kojy.
2. Location: NO. 480 Imajuku, Mibi-mura, Ampati-gun, Gifu-ken.
3. Name of president or manager: Mr. Yutaka Ohashi.
4. Reconversion permit No: Gifu prefectural order sho-2.478
 Dated: 18. Dec. 1945
5. Name and Address of parent Co: None.
6. Present Capitalization in yen: ¥ 4,000,000.
7. No. of Employees: No. 46.
8. Machinery and Equipment in plant.

Description	quantity	Condition
Lathes	165	25 in use
Drilling machines	12	4 " "
Boring machines	2	1 " "
Grinding machines	6	3 " "
Milling machines	21	3 " "
Gear Hopping machines	2	1 " "
Planers	6	1 " "
Shapers	10	2 " "
Slotting machines	4	2 " "
Metal Sawing machines	5	2 " "
Gear tooth Chamfering machines	1	1 " "
Industrial machines	17	4 " "
Electrical machines	35	15 " "
Precision Measuring Machines	4	2 " "

9. Present stock of Raw materials Supplied and Unfinished goods:

Description	quantity	Condition
Materials		
Steel	0.6 ton	
Special steel	36.0 ton	
pig iron	0.5 ton	
Scrap pig-iron	4.0 ton	
Unfinished goods:		
Agricultural machines	20 set.	

10. Acquisition of Raw material

Description	quantity	Source
None.		

11. Present stock of fuel:

Description	Quantity
Coke for forging	3.0 ton
Charcoal	0.5 ton

12. Fuel needed monthly:

Description	Quantity
Coke for forging	2.5 ton
Coke for casting	5 "
Charcoal	300. kg
Wood	80. Pakings

13. Products:

Description	Quantity
Agricultural machines	50 set.
Repairs	22 set.

15. Disposition of finished goods:

Description	Quantity	Source of Sale
Agricultural machines	50 set.	Musubi-mura.
Repairs	22 set.	Shinto Tokokuho Co. Ltd.

14. Prices:

Description	Unit	Price
Agricultural machine	1 set.	¥ 2,700.-
	1 set.	¥ 4,000.-

16. Present stock of finished goods:

Description	Quantity	Condition
Agricultural machine	68 set.	
Wood marking machines	3 set.	

17. Remarks:

Signed: Yutaka Ohashi
 Title: Director and Factory Manager

Monthly Production report
of Industrial facilities

File No. : 111
 To : Gifu Mil. Gov.
 Thru : _____
 Date : 28. Feb. 49.

1. Name of facility: K.K. Ogaki Tekko-sho, Ogaki-kojyo.
2. Location: No. 480 Imajuku, Miki-mura, Anpachi-gun, Gifu-ken.
3. Name of president or manager: Mr. Yutaka Ohashi.
4. Reconversion permit No: Gifu prefectural order dho-2478
 Dated: 12 Dec. 1945
5. Name and address of parent Co.: None.
6. Present Capitalization in yen: ¥1,000,000.
7. No. of Employees: 46.
8. Machinery and Equipment in plant.

Description	quantity	Condition
Lathes	165	25 in use
Grinding machines	12	4 " "
Boring machines	2	1 " "
Grinding machines	6	3 " "
Milling machines	21	3 " "
Gear hobbing machines	2	1 " "
Planers	6	1 " "
Shapers	10	2 " "
Slotting machines	4	2 " "
Metal sawing machines	5	2 " "
Gear tooth Chamfering machines	1	1 " "
Industrial machines	17	4 " "
Electrical machines	35	15 " "
Precision measuring machines	4	2 " "

9. Present stock of Raw materials supplied and Unfinished goods:

Description	quantity	Condition
Materials		
Steel	1.0 ton	
Special steel	36.5 ton	
pig iron	0.5 ton	
Scrap pig-iron	3.0 ton	
Unfinished goods:		
Agricultural machines	20, set.	

10. Acquisition of Raw material

Description	quantity	Source
None		

11. Present stock of fuel:

Description	quantity
Coke for forging	4.0 ton
Charcoal	0.5 ton

12. Fuel needed monthly:

Description	quantity
Coke for forging.	2.5 ton
Coke for casting.	5 "
Charcoal	300. Kg.
Wood.	80. Pakings

13. Products:

Description	quantity
Agricultural machines	50. set.
Repairs.	22. set.

15. Disposition of finished goods:

Description	quantity	Source of Sale
Agricultural machines	50. set.	Musubi-mura.
Repair	22. set.	Suito Tekkocho Co. Ltd.

14. Prices:

Description	Unit	Price
Agricultural machine	1 set.	¥ 2,900.-
Repair	1 set.	¥ 4,000.-

16. Present stock of finished goods:

Description	quantity	Condition
Agricultural machine	68. set.	
Wood marking machines	3. set.	

17. Remarks:

Signed: Yutaka Chashi
 Title: Director and Factory Manager.

File
F.V. 13

APPLICATION FOR PERMISSION
FOR CARRYING OUT EX-MACHINERY.

To: Commander, Gifu Military Government Team
Thru: Gifu Prefectural Government, Commercial &
Industrial Section.

Date: February 1st, 1949.

Name and Address of Applicant:

K.K. Ogaki Tekkosho, Ogaki Kojo,
480, Imajuku, Mikimura, Ampachi-gun, Gifu-pref.

Description of Machinery:

1. Code No.: 09-13-291 EX
2. Kind of machine: 1 set Substitute Gas Internal Combustion Engine
3. Accessories: a) 1 set Wooden fuel Gas Generator
b) 1 set Cooling Water Tank.

The above machine was installed and has been in use since December 1948 after getting your approval, but owing to poor quality of the fuel, its output is found too small to drive entire machinery in the plant, and for this reason, we herewith wish to apply for your permission for carrying the complete set of the engine into the building which is exempted from reparation.

K.K. OGAKI TEKKOSHO, OGAKI KOJO

Signed: Tajiro Satake

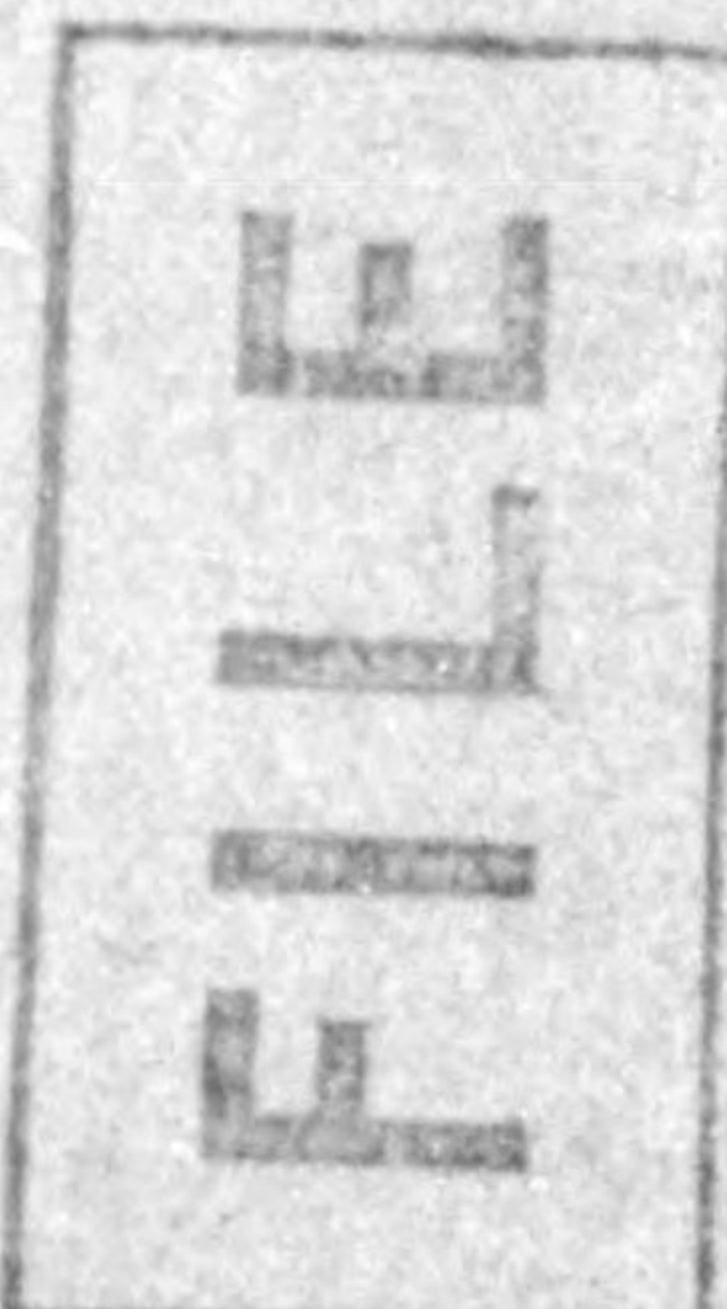
Title: Superintendent.

File
F 4.13HEADQUARTERS
GIFU MILITARY GOVERNMENT TEAM
APC 25, Unit 2 (Gifu, Honshu)

RR/NA/tt

004

8 February 1949

SUBJECT: Permission to Remove One Exempt Machine from Reparation
Factory**THRU:** Commerce and Industry Section
Gifu Prefectural Government**TO:** K.K. Ogaki Tekkosho
480, Imajuku, Miki-mura, Ampachi-gun,
Gifu Prefecture

1. Ref. K.K. Ogaki Tekkosho Letter, dated 1 February 1949, requesting permission to remove machine No. 09-13-291 EX from the reparations area.

2. You are hereby authorized to remove machine number 09-13-291 EX from the reparations area.

3. Upon removal, the appropriate adjustments will be made in your records to delete this item from the list of machinery and equipment located in the reparations area.

SIDNEY T. MICHON
Major, Infantry
Commanding

Monthly Production report
of Industrial facilities

File No: 111
 To: Gifu Mil. Ger.
 Thru: _____
 Date: 31. Jan. 49.

1. Name of facility: K.K. Ogaki Tekkocho, Ogaki Kojiyo.
2. Location: No. 480 Imajuku, Miki mura, Ampati-gun, Gifu-ken.
3. Name of president or manager: Mr. Yutaka Ohashi.
4. Reconversion permit No.: Gifu prefectural order Sho-2478
 Dated: 18 Dec. 1945
5. Name and address of parent Co.: None.
6. Percent Capitalization in yen: 44,000,000.
7. No. of Employees: no. 46.
8. Machinery and Equipment in plant.

Description	quantity	Condition		
		25	in	use
Lathes	165			
Drilling machines	12	4	"	"
Boring machines	2	1	"	"
Grinding machines	6	3	"	"
Milling machines	21	3	"	"
Gear Hopping machines	2	1	"	"
Planers	6	1	"	"
Shapers	10	2	"	"
Slotting machines	4	2	"	"
Metal sawing machines	5	2	"	"
Gear tooth Chamfering machines	1	1	"	"
Industrial machines	17	4	"	"
Electrical machines	35	15	"	"
Precision Measuring machines	4	2	"	"

9. Present stock of Raw materials Supplied and Unfinished goods:

Description	quantity	Condition
Materials:		
Steel	1.6 ton	
Special steel.	36.8 ton	
pig iron	0.5 ton	
Scrap pig-iron	4.0 ton	
Unfinished goods:		
Agricultural machines	20. set	

10. Acquisition of Raw material:

Description	quantity	Source
None		

11. Present stock of fuel:

Description	Quantity
Coke for forging	4.5 ton
Charcoal	0.5 ton

12. Fuel needed monthly:

Description	Quantity
Coke for forging	2.5 ton
Coke for casting	5 "
Charcoal	300 Kg
Wood	80 Pakangs

13. Products:

Description	Quantity
Agricultural machines	50 set
Repairs	18 set

15. Disposition of finished goods:

Description	Quantity	Source of Sale
Agricultural machines	52 set	Iligun
Repairs		Taiwan-fuki Co.

16. Prices:

Description	Unit	Price
Agricultural machine	1 set	₱ 2,700.-
Repair	1 set	₱ 4,200.-

16. Present stock of finished goods:

Description	Quantity	Condition
Agricultural machine	68 set	
Wood marketing machine	3 set	

17. Remarks:

Signed: Yutaka Chasui
 Title: Director and Factory Manager

File
F4.13HEADQUARTERS
GIFU MILITARY GOVERNMENT TEAM
APO 25, Unit 2 (Gifu, Honshu)

RR/WA/hn

004

27 December 1948

SUBJECT: Buildings and Land Released from Reparations Custody**THRU:** Commerce and Industry Section
Gifu Prefectural Government**TO:** K.K. Ogaki Tekkosho
Ampachi-gun Gifu-Pref.

1. In order to clarify released areas from non-released areas in reparations facilities, those buildings housing reparations items may be considered as being under reparations custody, and land on which buildings housing reparations equipment are located may also be considered as being under reparations custody.

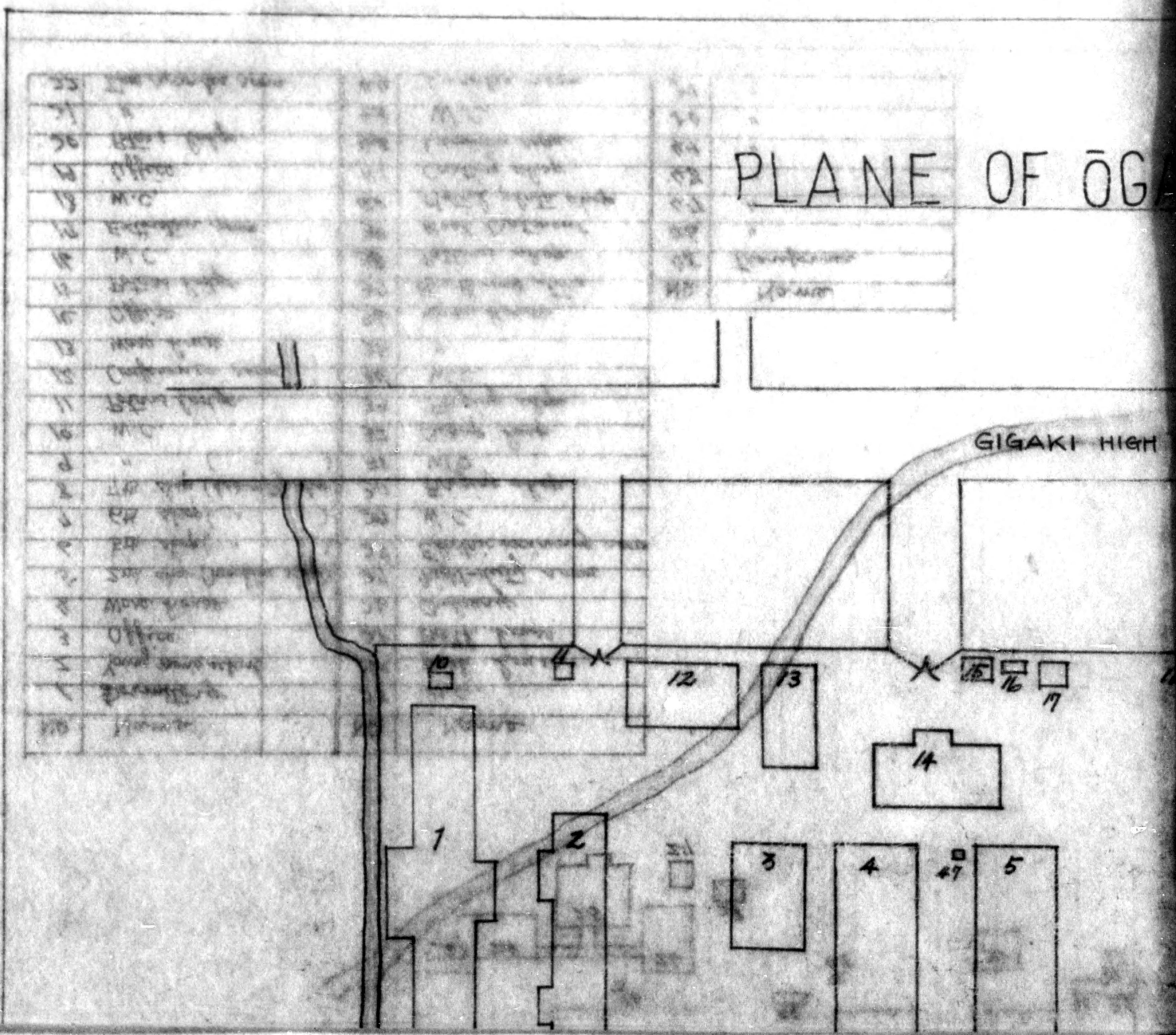
2. The following buildings and the land on which they are situated are under reparations custody:

Building # 6, Machine shop
Building # 7, Machine shop
Building #20, Guard house
Building #28, Electric apparatus housing

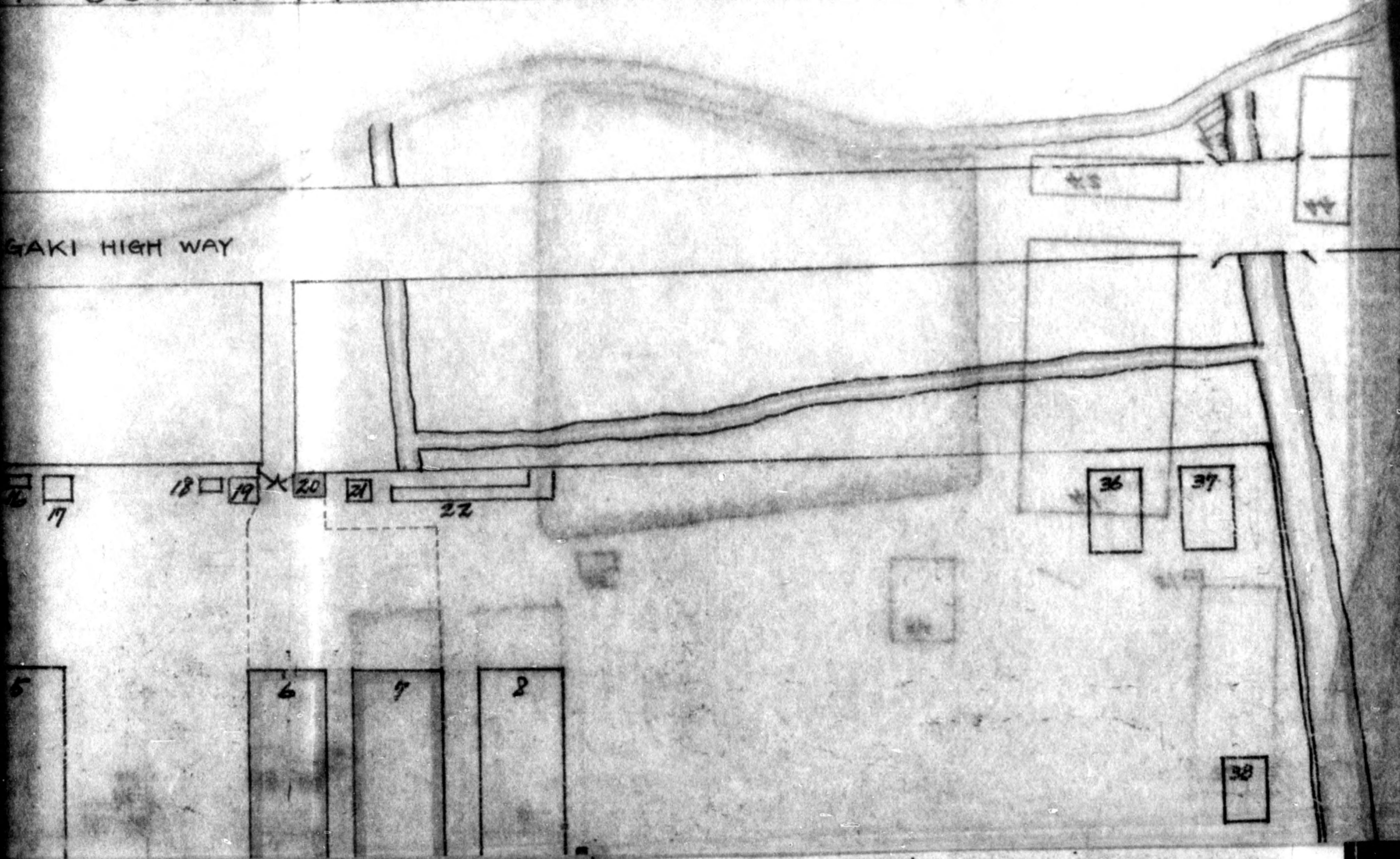
3. All land on which reparations buildings are located plus land adjacent to such buildings (as indicated on your plant layout,) in under reparations custody.

4. The nomenclature of the above locations has been derived from the plant layout submitted on 10 December 1948.

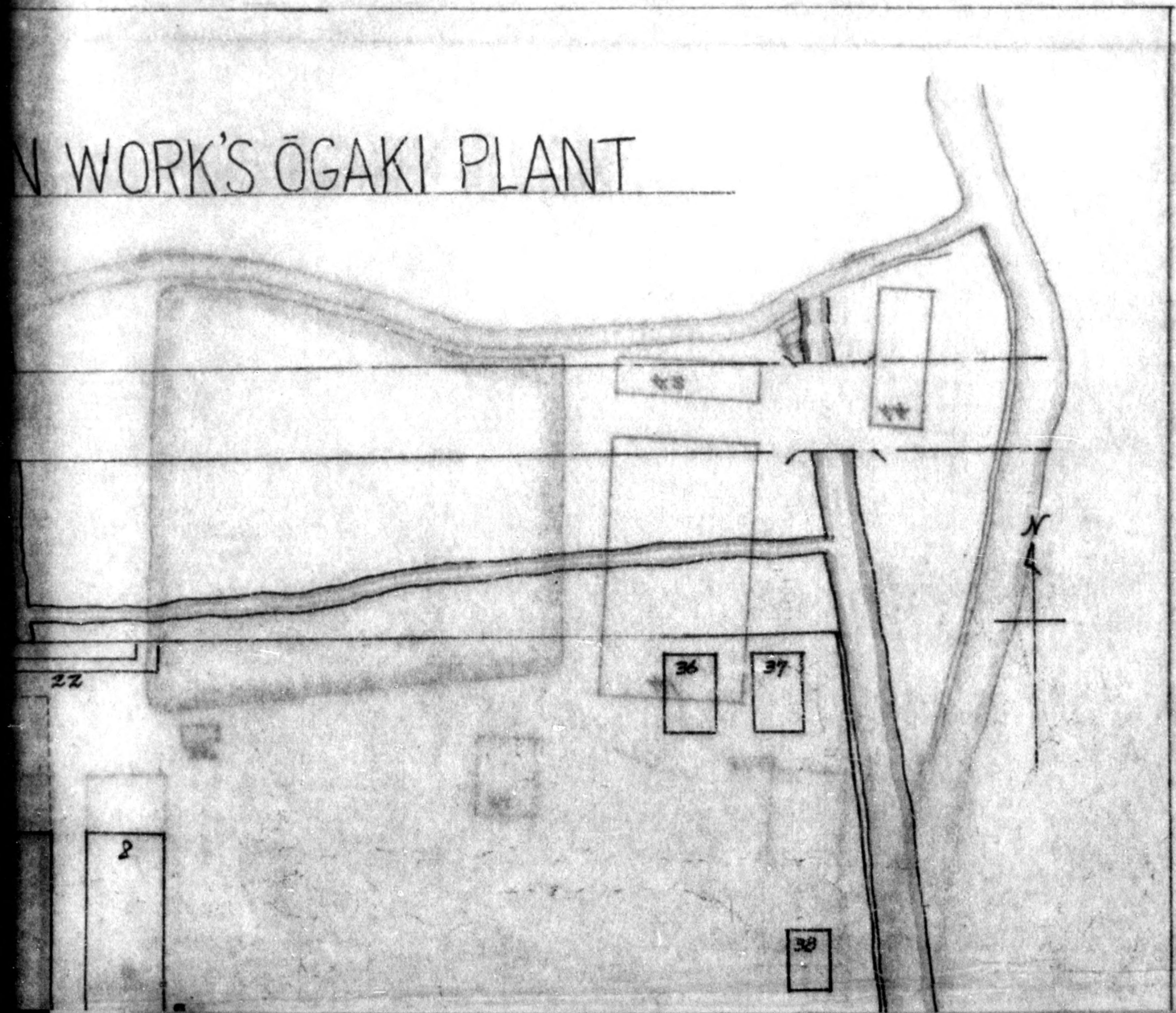
ALAN C. YOUNG
Colonel, Infantry
Commanding

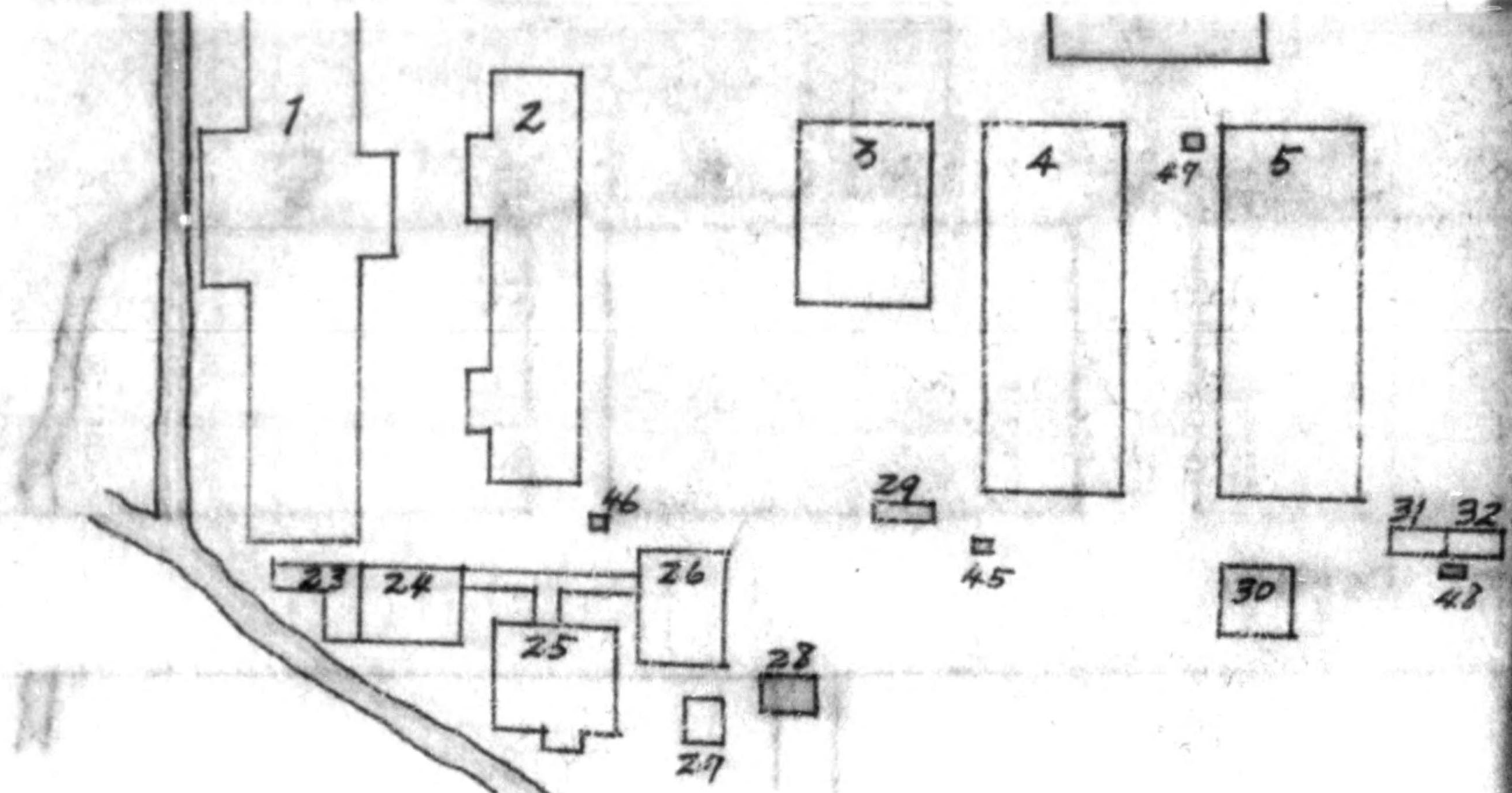


OF ŌGAKI IRON WORK'S ŌGAKI PLANT



N WORK'S ŌGAKI PLANT

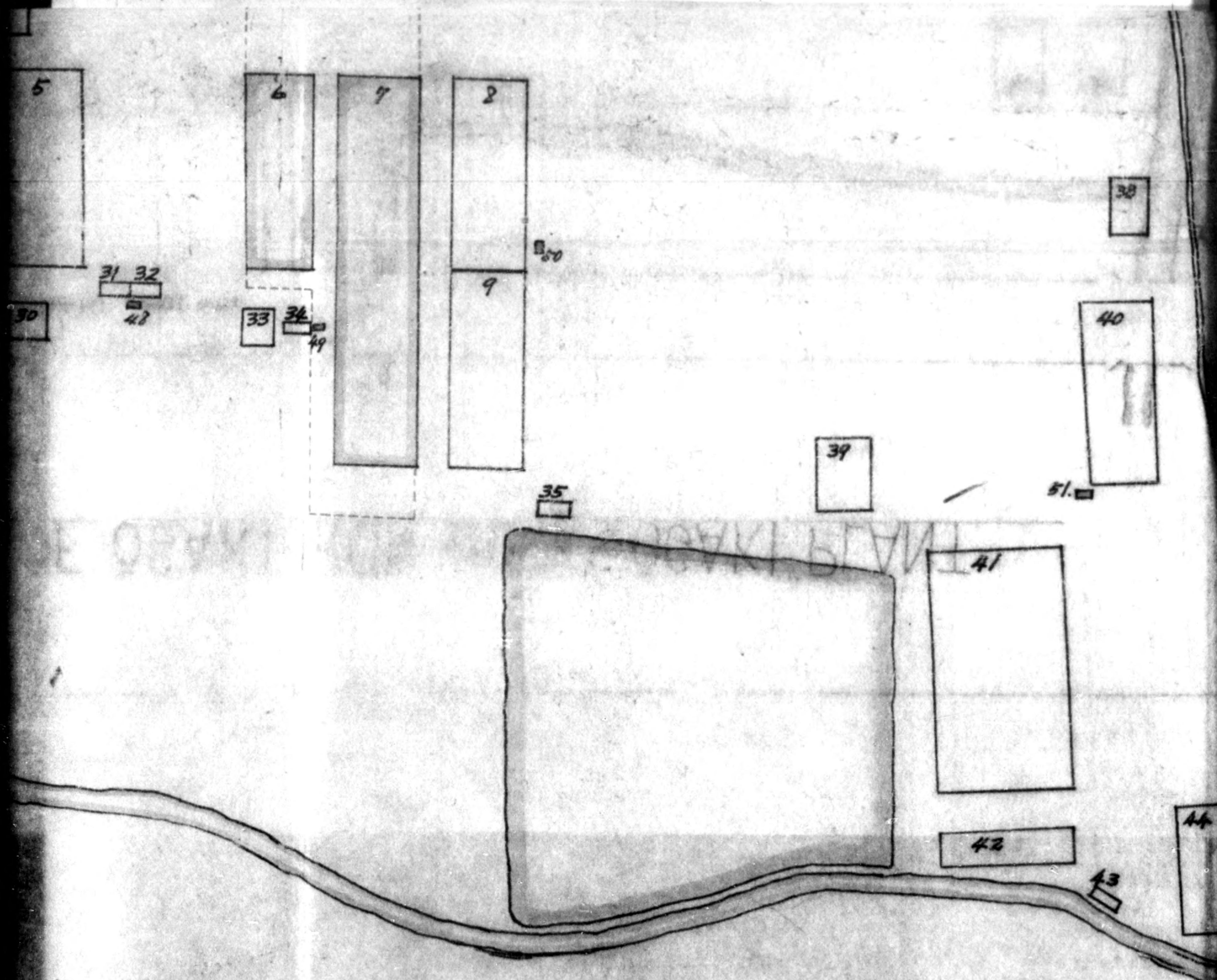


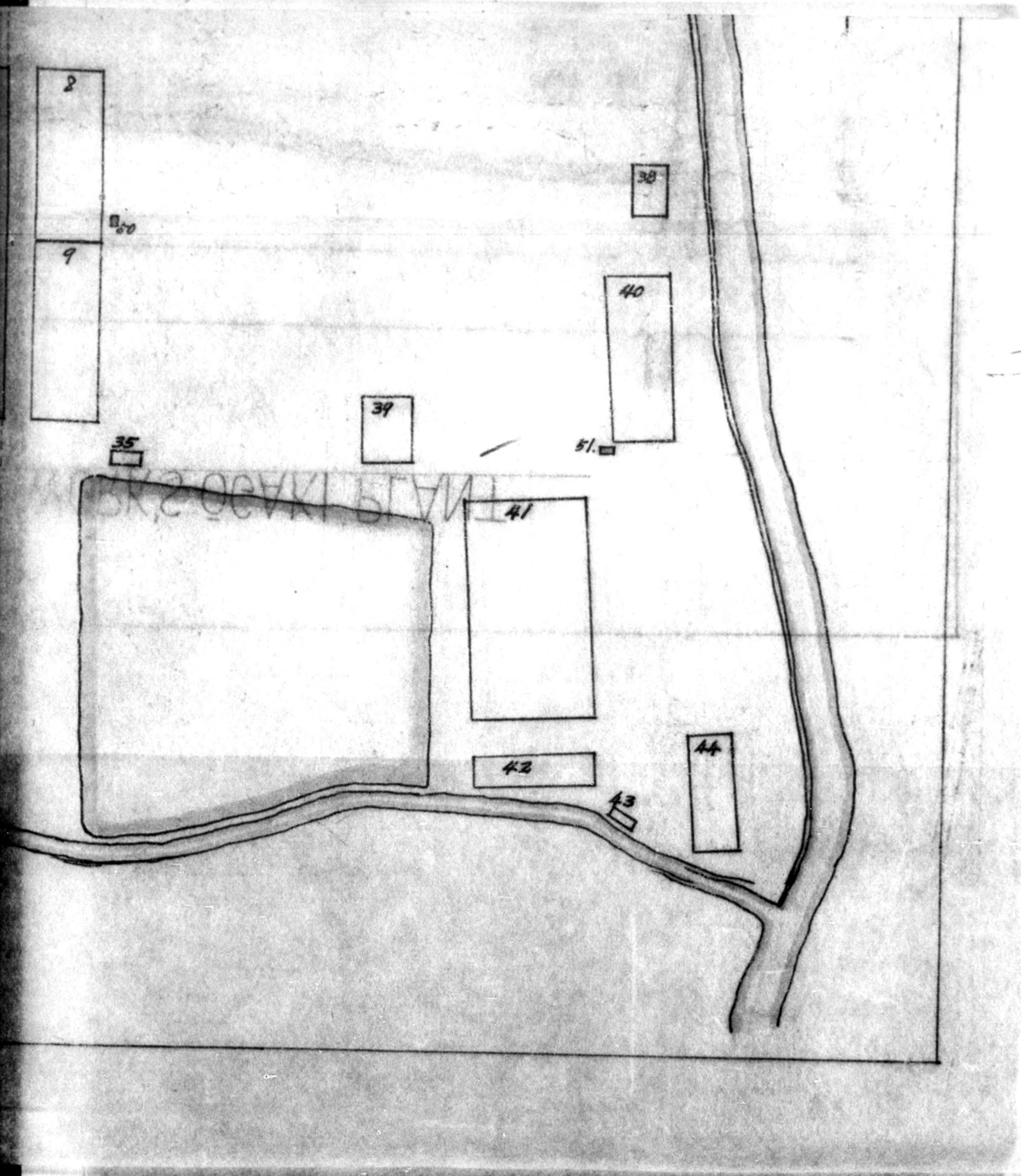


NO.	Name	NO.	Name
1	Dormitory	23	W.C.
2	Young men's school	24	Wash house
3	Office	25	Bath house
4	Ware house	26	Cookery
5	2nd shop (Machine shop)	27	Night-duty room
6	5th shop (")	28	Electric rewinding room
7	6th shop (")	29	W.C.
8	7th shop (Assembly shop)	30	Forging shop
9	" (")	31	W.C.
10	W.C.	32	Scrap heap
11	Potars lodge	33	Forging shop
12	Conference room	34	W.C.
13	Ware house	35	"
14	Office	36	Ware house
15	Potars lodge	37	Miscellaneous store
16	W.C.	38	Pattern shop
17	Extinction room	39	Heat treatment
18	W.C.	40	Metal plate shop
19	Office	41	Casting shop
20	Potars lodge	42	Lumber room
21	"	43	W.C.
22	Time recorder room	44	Lumber room

NO.	Name
45	Transformer
46	"
47	"
48	"
49	"
50	"
51	"

STATE OF ...





F4.13

HEADQUARTERS
GIFU MILITARY GOVERNMENT TEAM
APO 25, Unit 2 (Gifu, Honshu)

NA/RR/tt

004

1 December 1948

SUBJECT: Permission to Install Exempt Machine

THRU: Commerce and Industry Section
Gifu Prefectural GovernmentTO: K.K. Ogaki Tekkosho
Miki-mura, Ampachi-gun, Gifu Prefecture

1. You are hereby authorized to install one internal combustion engine and its attachments.
2. The code number 09-13-291 EX will be painted on the engine and its attachments.

SIDNEY T. WIXON
Major, Infantry
Commanding

C-O-P-Y

*See Review
File F4.13
na*

BASIC: Ltr, Hq Eighth Army, APO 343, dtd 6 Nov 48, Subj: "Transmittal of a Field Trip Report."

AG 333.5

2nd Ind

KBF/fak/ss

Hq Tokai-Hokuriku Mil Govt Region, APO 710, 12 Nov 48

TO: Commanding Officer, Gifu Mil Govt Team, APO 25

Attention is invited to paragraph 6, Inclosure #1 for your information and such corrective action as is necessary.

BY ORDER OF COLONEL DUMONT:

1 Incl:
n/c

/s/t/ MARION S. BELL
Capt, Inf
Adjutant

C-O-P-Y

C-O-P-Y

HEADQUARTERS EIGHTH ARMY
United States Army
Office of the Commanding General
APO 343

ACMGEM 333.5

6 Nov 1948

SUBJECT: Transmittal of a Field Trip Report

TO: Commanding General
I Corps
APO 301

Transmitted herewith for your information is a report of a field trip made by Mr. Eldon C. Grafton, Reparations Section, General Headquarters, Supreme Commander for the Allied Powers, to Gifu Prefecture.

BY COMMAND OF LIEUTENANT GENERAL WALKER:

1 Incl:
Report of Inspection
dated 1 Nov. 48

/s/ S. R. Mohn
for R. SCHAFER
Lt. Col., AGD
Asst. Adjutant General

AG 333 - BA

1st Ind

ABH/mo

Hq I Corps, APO 301,

TO: CO, Tokai-Hokuriku Mil Govt Region, APO 710

Forwarded for your information and such corrective action as is necessary.

BY COMMAND OF MAJOR GENERAL SWING:

1 Incl:
n/c

/s/t/ WILLIAM A. FRANKS
Capt, AGD
Ass't Adjutant General

C-O-P-Y

C-O-P-Y

GENERAL HEADQUARTERS
 SUPREME COMMANDER FOR THE ALLIED POWERS
 REPARATIONS SECTION

CFH/CCT/ECG/dms
 1 Nov 48

MEMORANDUM FOR: Chief, Reparation Section

SUBJECT: Inspection of Ogaki Tekkosho KK, Ogaki Kojo, Code
 #09-13 (A/C), on 11 Oct 48

1. Inspection party:

Mr. E. C. Grafton, Reparations Sec, GHQ
 Mr. S. Yokota, Interpreter, Gifu MG Team
 Mr. S. Takewaka, Gifu Prefectural Government
 Mr. C. Unckawa, Gifu Prefectural Government
 Mr. T. Satake, Plant Custodian and Engineer
 Mr. U. Ohashi, Plant Manager

2. These notes in addition to Reparations Inspection Check Sheet and Recap. Summary, herewith.

3. Subject plant is primarily a machine tool plant; was about 70% converted to aircraft production during wartime, making small parts for airplane wings, fuselage, and landing gear for Kawasaki Kokuki KK. Entire plant placed in reparations custody as aircraft plant. This company operates one other factory (at Kagamigahara, Gifu Ken) not in reparations custody.

4. Subject plant now operating under reconversion permit; making wheels and axles for mining cars, straw rope twisting machines, and small flour grinding mills. Has total of 66 items marked "U" (of 290 total) and considered to be in "authorized use." No evidence of authorization for official "authorized use" classification; stated to be on verbal authorization of Lt. Houseworth, formerly of GMGT.

5. This plant was not included in list of aircraft plants to be evaluated.

6. Subject plant consists of 44 buildings, all but 2 of which are stated to have been released from reparations custody by letter, GMGT, 3 Nov 47, signed by "C.E. Geiser, Major, TC, Exec," and reading "all buildings not required for housing of reparations machines" to be released. Inspection reveals that following "released" buildings still contain reparations equipment:

C-O-P-Y

C-O-P-Y

Bldg #28 - 3 items (substation)
Bldg # 5 - 39 items (machine tools in use)
Bldg # 9 - 33 items (machine tools in storage)

Area reported to be retained in custody is not fenced from, or otherwise clearly defined and guarded from that portion reported to have been released from custody. Recommend clarification of "released" and "retained" areas, and return to reparations custody of those released buildings presently containing reparations equipment.

7. Plant custodian states that no "exempt" equipment is included in that portion of plant considered to remain in reparations custody. Buildings considered to be "released" contain considerable equipment without reparations identification markings.

8. Plant engineer-custodian states that foundry, forge, and heat treatment shops of this plant were never completed; that such work was done for this company by Okamoto Kogyo KK, and other companies in the area.

9. This inspection reported to, and noted by, Mr. Rosevear, Reparations Officer, Gifu MG Team.

For the Chief, Field Operations Division:

E. C. GRAFTON
Field Engineer
Field Operations Division

3 Incls
1. C/S (orig only)
2. Rep Inv (orig only)
3. PIC (Orig only)

cc: MG Sec, 9th A

C-O-P-Y

HEADQUARTERS
GIFU MILITARY GOVERNMENT TEAM
APO 25, Unit 3 (Gifu, Honshu)

RE/NA/hn

004

26 October 1948

SUBJECT: Confirmation of Items in Authorized Use

THRU: Commerce & Industry Section, Gifu Pref.

TO: Ogaki Tekkosho K.K.
Ogaki City, Gifu Prefecture

F4.13

1. Since verbal authorization to operate 66 machines was received by you prior to 31 March 1948, you are permitted to retain these machines in an authorized use status. This communication will serve as the written authority substantiating the verbal authority already given.

2. The following items are recognized by this headquarter to have been in authorized use prior to 31 March 1948:

09-13-1	Hack Sawing Machine	09-13-100	Slotter
09-13-2	" " "	09-13-103	Slotter
09-13-6	Lathe	09-13-104	Radial Drilling Machine
09-13-7	"	09-13-105	Radial Drilling Machine
09-13-8	"	09-13-111	Milling Machine
09-13-9	"	09-13-112	Grinding Machine
09-13-10	"	09-13-113	" "
09-13-16	"	09-13-120	Lathe
09-13-17	"	09-13-121	"
09-13-18	"	09-13-122	"
09-13-19	"	09-13-123	"
09-13-20	"	09-13-125	"
09-13-21	"	09-13-126	"
09-13-59	"	09-13-131	"
09-13-81	Shaper	09-13-134	"
09-13-82	"	09-13-148	"
09-13-88	Planer	09-13-149	Boring Machine
09-13-97	Gear Champing Machine	09-13-177	Grinding Machine
09-13-98	Gear Cutting Machine	09-13-185	Lathe

09-13-192	Lathe	09-13-249	Transformer
09-13-193	"	09-13-250	"
09-13-194	"	09-13-251	"
09-13-203	Hardness Testing Machine	09-13-252	"
09-13-204	" " "	09-13-253	"
09-13-206	Air Compressor	09-13-254	"
09-13-229	Milling Machine	09-13-262	"
09-13-233	" "	09-13-263	"
09-13-242	Drilling Machine	09-13-264	Switch Board
09-13-243	" "	09-13-270	Alligator Shear
09-13-244	Transformer	09-13-271	Electric Motor
09-13-245	"	09-13-272	" "
09-13-246	"	09-13-276	Disc Grinder
09-13-247	"	09-13-283	" "

52 66
 3. These items in authorized use will have "U" painted on them after the inventory code number, or in some other conspicuous place.

FRANK C. SRITZ
 Lt. Col., Infantry
 Commanding

GIFU
MILITARY GOVERNMENT TEAM
APO 25, Unit 2 (Gifu, Honshu)

Mr Rosevear

File F4.13
NA/ct
lw

004

1 October 1948

SUBJECT: Removal of Reparations Machinery from Authorized Use

THRU: Commanding Officer
Tokai-Hokuriku Mil Govt Region
APO 710TO: Commanding General
Eighth Army
APO 343

1. Reference: Par. 4f, OD No. 21, Headquarters Eighth Army, dated 30 March 1948.

2. It has been determined that the following machines located in the Ogaki Tekkocho K.K. (09-13), previously authorized for "U" marking, are in use only for the testing and maintenance of stored machinery:

09-13-277-U
09-13-281-U
09-13-286-U

3. This headquarters has instructed the Gifu Prefectural Government to take proper measures to remove subject machines from authorized use and delete the "U" marking.

FRANK C. SKITZ
Lt. Col., Infantry
Commanding

GIFU
MILITARY GOVERNMENT TEAM
APO 25, Unit 2 (Gifu, Honshu)

Mr. Rosevear
File F4.13
NA/te
lw

004

1 October 1948

SUBJECT: Removal of Machinery from Authorized Use

TO: Commerce and Industry Section
Gifu Prefectural Government

1. It is requested that proper steps be taken to remove the following machinery from authorized use status in the Ogaki Tekkosho Plant (09-13):

09-13-277
09-13-281
09-13-286

2. Subject machines are being used only to maintain stored machinery.
3. The "U" marking should be deleted from subject machines.

FRANK C. SEITZ .
Lt. Col., Infantry
Commanding

Copy

~~Very~~
+ File F4.13
waAPPLICATION FOR PERMISSION
FOR RECONVERSION OF
DESIGNATED REPARATION PLANT.

To: Ministry of Commerce and Industry

From: K.K. Ogaki Tekkosho, Ogaki Kojo.

480, Imajuku, Mikimura, Ampachigun,
Gifu-Pref.

Date: September 1948.

1. Name of Plant: K.K. Ogaki Tekkosho, Ogaki Kojo
(Ogaki Iron Works Ltd, Ogaki Plant)
2. Location of Plant: 480, Imajuku, Mikimura, Ampachi-gun,
Gifu-Pref.
3. Name of Products of the Plant:

1) Already permitted and under production:

- a) Woodworking machines
- b) Saws
- c) Agricultural implements
- d) Repairs of various machines.

2) Newly planned for production:

Manufacturing and finishing of parts of
vehicles, machines and tools (Chiefly vehicles)

4. Experience of production planned:

Five years from 1927 to 1931, in small size carriages.

5. 1939 - 1945 Production:

<u>Year</u>	<u>Products</u>	<u>Quantity</u>
1939	Machine tools	352
1940	"	295
1941	"	316
1942	"	296
1943	"	256
1944	"	180
	Parts of aircraft bodies	500,000
1945	Machine tools	70
	Parts of aircraft bodies	1,800,000

6. Scale of monthly production during period of desired permission:

2,000 pieces Parts of vehicles (Wheels, axles and axle-boxes)

7. Period of Desired Permission:

From date of permission till the time of reparation removal.

8. Plan and Location, to Continue the Production after Reparation Removal:

Production will be continued till the removal takes place, and thereafter, production will be newly planned.

9. Scale of Proposed Changes in Physical:

Present machine-tools and electric machines will be used without any change.

10. Estimated Expenses for Reconversion:

Not applicable.

11. Name or Location, to which products are to be delivered:

Source of sale: a) Daido Sharyo Kogyo K.K., Anjo, Anjo-machi, Hekkaigun, Aichi-Pref.

b) Coal mines at various places.

Destination: a) Kyushu

b) Hokkaido

Signed:

Title:

Yutaka Chashi
Director & Factory Manager

LIST OF MACHINES NOW IN USE.

Registered No.	Name of Machines	Class	Capacity	Remarks
09-13-149	Boring machine	1	63.5 m/m	Dia of bar.
104	Drilling machine	1	36"	
105	" "	1	48"	
242	" "	1	10"	
243	" "	1	10"	
98	Gear cutting & finishing machine	2	20"	
97	Gear tooth chamfering machine	1	8"	
113	Grinding machine	1	38"	
112	" "	2	20"	
276	Disc grinder	1	14"	
283	" "	1	10"	
6	Lathe	2	5 ft.	
7	"	2	5 ft.	
8	"	2	4.5 ft.	
9	"	2	4.5 ft.	
10	"	2	4.5 ft.	
16	"	1	6 ft.	
17	"	1	6 ft.	
18	"	1	6 ft.	
19	"	1	6 ft.	
20	"	1	6 ft.	
21	"	1	6 ft.	
120	"	1	24 ft.	
121	"	2	12 ft.	
122	"	2	8 ft.	
123	"	2	8 ft.	
125	"	1	6 ft.	

Registered No.	Name of Machines	Class	Capacity	Remarks
09-13-126	Lathe	1	6 ft.	
131	"	1	8 ft.	
134	"	2	6 ft.	
148	"	2	8 ft.	
185	"	2	4 ft.	
193	"	2	8 ft.	
194	"	2	8 ft.	
111	Milling machine	1	710x250 m/m	Working area of table.
229	" "	1	850x350 "	"
233	" "	1	800x450 "	"
88	Planer	1	10 ft.	
100	Slotter	2	5"	
1	Hack sawing machine	1	10"	
2	" " "	1	10"	
81	Shaper	1	24"	
82	"	1	26"	
270	Hand alligator shear	1	8"	
203	Hardness tester	1	0 - 120'	Shore's
204	" "	1	0 - 140'	"
271	Electric motor	1	10 HP	
272	" "	1	10 HP	
✓ 277	" "	1	10 HP	
✓ 281	" "	1	10 HP	
✓ 286	" "	1	10 HP	
244	Transformer	1	10 KVA	
245	"	1	20 KVA	
246	"	1	20 KVA	
247	"	1	30 KVA	
249	"	1	50 KVA	

Registered No.	Name of Machines	Class	Capacity	Remarks
09-13-250	Transformer	1	30 KVA	
251	"	1	20 KVA	
252	"	1	20 KVA	
253	"	1	20 KVA	
254	"	1	20 KVA	
260	"	1	20 KVA	
261	"	1	20 KVA	
262	"	1	5 KVA	
263	"	1	5 KVA	
264	Switch board	1	3,500 V 700 ampere.	
281	Slotter	1	8"	
177	Grinding machine	1	15.75"	Dia. of table
206	Air compressor	2	100 lbs.	
Total		69 sets.		

COPY

Gifuken Shirei 20-Sho-2478

To Yutaka Ohashi,

Director,

K.K. Ogaki Tekkoso,

Imajuku, Mikimura, Ampschigun.

The undersigned hereby permit you to convert the plant
for manufacture of civil commodities as applied for on
November 15, 1945.

Date: December 18, 1945.

Gihei Nomura

Governor of Gifu Prefecture.

F4.13

2 Sept 48

Memo for File:

Subject: Ogaki Tekkosho (09-13)

1. Mr. Ohashi stated he was tooling Mining Cart wheels on contract for Daido Sangyo in Nagoya. Contract calls for 1000 pair, of which 200 pair are completed. He is doing it on the strength of the provision in his conversion permit which allows him to repair machinery.

2. Telephone conversation with Major Morgan, Tokai-Hokuriku Mil Govt Region, resulted in decision to permit such operations in view of the high priority given mining machinery.

3. Advised Mr. Takewaka, Com & Ind Sect, that:

a. Ogaki Tekkosho will be permitted to complete the current contract.

b. A request for enlargement of conversion permit should nevertheless be submitted to SCAP thru the Japanese Government.

c. Ogaki Tekkosho people should inform this office before accepting future contracts of this nature.

Monthly production report
of Industrial facilities

File No: 111
 To: Gifu Mil. Gov.
 Thru: _____
 Date: 30 Dec.

1. Name of facility: K. K. Ogaki Tekkocho, Ogaki Kojo.
2. Location: No 480 Imajuku, Niki mura, Ampati-gun, Gifu-ken.
3. Name of president or manager: Mr. Zutatea Ohashi.
4. Reconversion permit No: Gifu prefectural order sho-2498
 Dated: 18 Dec. 1945
5. Name and Address of parent Co.: None.
6. Present Capitalization in yen: ¥4,000,000.
7. No. of Employees:
8. Machinery and Equipment in plant:

Description	Quantity	Condition
Lathes	165	25 in use
Drilling machines	12	4 " "
Boring machines	2	1 " "
Grinding machines	6	3 " "
Milling machines	21	3 " "
Gear Hopping machines	2	1 " "
Planers	6	1 " "
Shapers	10	2 " "
Slotting machines	4	2 " "
Metal Saws	5	2 " "
Gear tooth chamfering machine	1	1 " "
Industrial machines	17	4 " "
Electrical machines	35	15 " "
Precision measuring machines	4	2 " "

9. Present stock of Raw materials supplied and Unfinished goods:

Description	Quantity	Condition
Materials:		
Steel	2.0 tm	
special steel	37.0 ["]	
pig soon	0.5 ["]	
scrap pig-iron	5.0 ["]	
Unfinished goods:		
Agricultural machine.	20, set.	

10. Acquisition of Raw material:

Description	Quantity	Source
None		

11. Present stock of fuel:

Description	Quantity
Coke for forging	5.0 ton
Charcoal	2.5 "

12. Fuel needed monthly:

Description	Quantity
Coke, for forging.	2.5 ton
Coke, for casting.	5 "
Charcoal.	300 Kg
Wood.	80 Pakings

13. Products:

Description	Quantity
Agricultural machines	52. set
Repaire	20. "

15. Disposition of finished goods:

Description	Quantity	Source of sale.
Agricultural machines	52. set	Shimaniyama Agricultur Janso Co,
Repaire	20. "	Taikoboki Co,

14. Prices:

Description	Unit	Price
Agricultural machine		2,700.-
Repaire		4,000.-

16. Present stock of finished goods:

Description	Quantity	Condition
Agricultural machine	70. set	
Wood working machine	3. "	

17. Remarks:

Signed: Tojiro Satake
 Title: Supaintendent

Monthly production report
of Industrial facilities

File No.: 111
To: Gifu Mil. Gov.
Thru:
Date: 1. Dec.

1. Name of facility: K. K. Ogaki Tekkasho, Ogaki Kogyo.
2. Location: No. 480 Imajuku, Miki-mura, Ampaki-gun, Gifu-ken.
3. Name of president or manager: Mr. Zutaka Ohashi.
4. Reconversion permit No: Gifu prefectural order Iho-2478.
Dated: 13 Dec. 1945.
5. Name and Address of parent Co.: None.
6. Present Capitalization in yen: ¥4,000,000.
7. No. of Employees:
8. Machinery and Equipment in plant:

Description	Quantity	Condition
Lathes	165	25 in use
Drilling machines	12	4 " "
Boring machines	2	1 " "
Grinding machines	6	3 " "
Milling machines	21	3 " "
Gear Hopping machines	2	1 " "
Planers	6	1 " "
Shapers	10	2 " "
Slotting machines	4	2 " "
Metal Saws	5	2 " "
Gear Tooth Chamfering machine	1	1 " "
Industrial machines	17	4 " "
Electrial machines	35	15 " "
Precision measuring machines	4	2 " "

9. Present stock of Raw materials supplied and Unfinished goods:

Description	Quantity	Condition
Materials:		
Steel	2.4 ton	
Special steel	37.	
Pig iron	1.	
Scrap pig-iron	8.	
Unfinished goods:		
Agricultural machine	20, set	

10. Acquisition of Raw material:

Description	Quantity	Source
None		

11. Present stock of fuel:

Description	Quantity
Coke for forging	0.5 ton
Charcoal	1.

12. Fuel needed monthly:

Description	Quantity
Coke, for forging.	2.5 ton
Coke, for casting.	5 "
Charcoal.	300 kg
Wood.	80 Pakings

13. Products:

Description	Quantity
Agricultural machines	40. set.
Repairs	21. "

15. Disposition of finished goods:

Description	Quantity	Source of sale
Agricultural machines	30. set	Maramiya Co.
Repairs	21. "	Taikoboki Co.

14. Prices:

Description	Unit	Price
Agricultural machine	1 set	¥ 2,700.-
Repairs	1 "	¥ 4,000.-

16. Present stock of finished goods:

Description	Quantity	Condition
Agricultural machine	70. set.	
Wood working machine	3. "	

17. Remarks:

Signed: Tojiro Satake
 Title: _____

Monthly production report
of Industrial facilities

File No.: 111
 To: Gifu Mil. Gov.
 Thru: _____
 Date: 1. Nov.

1. Name of facility: K. K. Ōgaki Tekkōsha, Ōgaki Kōgyō.
2. Location: No. 480 Imajuku, Miki-mura, Ampati-gun, Gifu-ken.
3. Name of president or manager: Mr. Zutaka Ohashi.
4. Reconversions permit No: Gifu prefectural order Shō-2478.
 Dated: 13 Dec. 1945.
5. Name and Address of parent Co.: Nike.
6. Present Capitalization in yen: ¥4,000,000.
7. No. of Employees: No. 45.
8. Machinery and Equipment in plant:

Description	Quantity	Condition
Lathes	16	25 in use
Drilling machines	12	4
Boring machines	2	1
Grinding machines	6	23
Milling machines	21	3
Gear Hopping machines	2	1
Planers	6	1
Shapers	10	2
Slotting machines	4	2
Metal Saws	5	2
Gear tooth Chamfering machine	1	1
Industrial machines	17	4
Electrical machines	35	15
Precision measuring machines	4	2

9. Present stock of Raw materials Supplied and Unfinished goods:

Description	Quantity	Condition
Materials:		
Steel	3. Ton	
Special steel	37. "	
Pig iron	2. "	
Scrap pig-iron	12. "	
Unfinished goods:		
Wood working machines	20 set	

10. Acquisition of Raw material:

Description	Quantity	Source
None.		

11. Present stock of fuel:

Description	Quantity
Coke for forging	1 ton
Charcoal	1 "

12. Fuel needed monthly:

Description	Quantity
Coke, for forging	2.5 ton
Coke, for casting	5 "
Charcoal	300 kg
Wood	80 Pakings

13. Products:

Description	Quantity
Agricultural machines	45 set
Repaire	30 set

15. Disposition of finished goods:

Description	Quantity	Source of sale
Agricultural machines	45 set	Abata Co.,
Repaire	30 "	Takoboki Co.,

14. Prices:

Description	Unit	price
Agricultural machine	1 set	¥ 2,700.-
Repaire	"	¥ 4,300.-

16. Present stock of finished goods:

Description	Quantity	Condition
Agricultural machine	60 set	
Wood working machines	3 "	

17. Remarks:

Signed: Tejise Satake.
 Title: _____

Monthly production report
of Industrial facilities

File No.: 111
 To: Gifu. Mil. Gov. Team
 Thru: _____
 Date: 5. ~~Sept.~~ Sep. '45

1. Name of facility: K. K. Ozaki Tekkoshu, Ozaki Kogyo.
2. Location: No. 480 Imajuku, Miki-mura, Ampati-gun, Gifu-ken.
3. Name of president or manager: Mr. Zutaka Ohashi.
4. Reconversion permit No: Gifu prefectural order Sho-2478.
 Dated: 13 Dec. 1945.
5. Name and Address of parent Co.: None.
6. present Capitalization in yen: ¥4,000,000.
7. No. of Employees: 10.57.
8. Machinery and Equipment in plant:

Description	quantity	Condition
Lathes	16	20 in use
Drilling machines	12	4
Boring machines	2	1
Grinding machines	6	2
Milling machines	21	3
Gear Hopping machines	2	1
planers	6	1
Shapers	10	2
Slotting machines	4	1
Metal saws	5	2
Gear tooth Chamfering machine	1	1
Industrial machines	17	4
Electrial machines	35	17
precision measuring machines	4	2

9. Present stock of Raw materials supplied and Unfinished goods:

Description	quantity	Condition
Materials:		
Steel	37.0 ton	
Special steel	4.0	
pig iron	55.0	
Scrap pig-iron		
Unfinished goods:		
Woodworking machines	20 set	

10. Acquisition of Raw material:

Description	quantity	Source
None		

11. Present stock of fuel:

Description	Quantity
Coke, for forging	1.0 ton
Charcoal	2.5 "

12. Fuel needed monthly:

Description	Quantity
Coke, for forging	2.5 ton
Coke, for casting	5 "
Charcoal	300 kg
Wood	20 Packings

13. Products:

Description	Quantity
Agricultural machines	45. set
wood working machines	1. "
Repair	5. "

15. Disposition of finished goods:

Description	Quantity	Source of sale
Agricultural machines	45.	Kawanami
wood working machines	1.	Mori Kengai Co.,
Repair	5	Taitei bo Co.,

14. Prices:

Description	Unit	Price
Agricultural machine		¥ 2,700.-
Wood working machines		¥ 15,000.-
Repair		¥ 6,300.-

16. Present stock of finished goods:

Description	Quantity	Condition
Agricultural machine	5-8 set	
wood working machines	4 "	

17. Remarks:

Signed: Yajiro Satake
 Title: _____

Monthly production report
of Industrial facilities

File No.: 111
 To: Gifu Mil. Gov.
 Thru: _____
 Date: 1. Oct.

1. Name of facility: K. K. Ogaki Tekkoshu, Ogaki Kogyo.
2. Location: No. 480 Imajuku, Miki-mura, Ampaki-gun, Gifu-ken.
3. Name of president or manager: Mr. Zutaka Ohashi.
4. Reconversion permit No: Gifu prefectural order Sho-2478.
 Dated: 13 Dec. 1945.
5. Name and Address of parent Co.: None.
6. Present Capitalization in yen: ¥2,000,000.
7. No. of Employees: No. 45.
8. Machinery and Equipment in plant:

Description	Quantity	Condition
Lathes	165	20 in use
Drilling machines	12	4 " "
Boring machines	2	1 " "
Grinding machines	6	2 " "
Milling machines	21	3 " "
Gear Hopping machines	2	1 " "
Planers	6	1 " "
Shapers	10	2 " "
Slotting machines	4	1 " "
Metal Saws	5	2 " "
Gear tooth Chamfering machine	1	1 " "
Industrial machines	17	4 " "
Electrial machines	35	17 " "
Precision measuring machines	4	2 " "

9. Present stock of Raw materials Supplied and Unfinished goods:

Description	Quantity	Condition
Materials:	3.8 ton	
Steel	37.0 "	
Special steel	4.0 "	
Pig iron	45.0 "	
Scrap pig-iron		
Unfinished goods:		
Wood working machines	20 set	

10. Acquisition of Raw material:

Description	Quantity	Source
None		

11. Present stock of fuel:

Description	Quantity
Coke for Forging	1.0 Ton
Charcoal	1.5 "

12. Fuel needed monthly:

Description	Quantity
Coke, for forging.	2.5 ton
Coke, for casting.	5 "
Charcoal.	300 Kg
Wood.	80 Packings

13. Products:

Description	Quantity
Agricultural machines	35 set
Wood working machines	0 "
Repair	12 "

15. Disposition of finished goods:

Description	Quantity	Source of Sale
Agricultural machines	33 set	Masudagunshifu
wood working machines	1 "	Nikkō Co.,
Repair	12 "	Taikabōshi Co.,

14. Prices:

Description	Unit	Price
Agricultural machine	1 set	¥ 2700.-
wood working machines	1 "	¥ 1300.-
Repair	1 "	¥ 1000.-

16. Present stock of finished goods:

Description	Quantity	Condition
Agricultural machines	60 set	
wood working machines	3 "	

17. Remarks:

Signed: Tajiro Satake
 Title: Superintendent

Monthly production report
of Industrial facilities

File No.: 111
 To: Gifu Mil. Gov. Term
 Thru: _____
 Date: 31 July '48

1. Name of facility: K. K. Ozaki Tekkasho, Ozaki Kogyo.
2. Location: No. 480 Imajuku, Miki-mura, Ampati-gun, Gifu-ken.
3. Name of president or manager: Mr. Zutaka Ohashi.
4. Reconversion permit No: Gifu prefectural order Sho-2478.
 Dated: 18 Dec. 1945.

5. Name and Address of parent Co.: None.
 6. Present Capitalization in yen: ¥4,000,000.

7. No. of Employees: No. 64.

8. Machinery and Equipment in plant:

Description	Quantity	Condition
Lathes	16.5	20 in use
Drilling machines	12	4
Boring machines	2	1
Grinding machines	6	2
Milling machines	21	3
Gear Hopping machines	2	1
Planers	6	1
Shapers	10	2
Slotting machines	4	1
Metal Saws	5	2
Gear Tooth Chamfering machine	1	1
Industrial machines	17	4
Electrical machines	35	17
Precision measuring machines	4	2

9. Present stock of Raw materials supplied and Unfinished goods:

Description	Quantity	Condition
Materials:		
Steel	3.8 ton	
Special steel	37.0 "	
Pig iron	4.0 "	
Scrap pig-iron	60.0 "	
Unfinished goods:		
Woodworking machines	2 set	

10. Acquisition of Raw material:

Description	Quantity	Source
<u>None.</u>		

11. Present stock of fuel:

Description	Quantity
Coke, for forging	0.2 ton
Charcoal	0.5 "

12. Fuel needed monthly:

Description	Quantity
Coke, for forging.	2.5 ton
Coke, for casting.	5 "
Charcoal.	300 kg
Wood.	80 Packages

13. Products:

Description	Quantity
Agricultural machines	45 set
Woodworking machines	1 "
Repairs	18 "

15. Disposition of finished goods:

Description	Quantity	Source of Sale
Agricultural machines	35	Yoto-gun Agricultural A.
Woodworking machine	1	Nakashima Works.
Repair	18	Teiko Boki Co. Ltd.

14. Prices:

Description	Unit	Price
Agricultural machine		¥ 2,700
Woodworking machine		¥ 17,000
Repair		¥ 5,500

16. Present stock of finished goods:

Description	Quantity	Condition
Agricultural machines	58	
Woodworking machines	4	

17. Remarks:

Signed: Tejito Satake
 Title: Representative

Monthly production report
of Industrial facilities

File No.: 111
To: Gifu Mil. Gov. Team
Thru:
Date: 2 July '48

1. Name of facility: K. K. Ogaki Tekkasho, Ogaki Kogyo.
2. Location: No. 480 Imajuku, Miki-mura, Ampati-gun, Gifu-ken.
3. Name of president or manager: Mr. Zutaka Ohashi.
4. Reconversion permit No: Gifu prefectural order Sho-2478.
Dated: 13 Dec. 1945.
5. Name and Address of parent Co.: None.
6. Present Capitalization in yen: ¥4,000,000.
7. No. of Employees: 64
8. Machinery and Equipment in plant:

Description	Quantity	Condition
Lathes	16	20 in use
Drilling machines	12	4 " "
Boring machines	2	1 " "
Grinding machines	6	2 " "
Milling machines	2	3 " "
Gear Hopping machines	2	1 " "
Planers	6	1 " "
Shapers	10	2 " "
Slotting machines	4	1 " "
Metal Saws	5	2 " "
Gear Tooth Chamfering machine	1	1 " "
Industrial machines	17	4 " "
Electrial machines	35	17 " "
Precision measuring machines	4	2 " "

9. Present stock of Raw materials supplied and Unfinished goods:

Description	Quantity	Condition
Materials:		
Steel	3.8 ^{ton}	
Special steel	37.0	
Pig iron	4.0	
Scrap pig-iron	60.0	
Unfinished goods:		
Woodworking machines	3	

10. Acquisition of Raw material:

Description	Quantity	Source
None		

11. Present stock of fuel:

Description	Quantity
Coke, for forging	1.0 ton
Charcoal	1.2

12. Fuel needed monthly:

Description	Quantity
Coke, for forging	2.5 ton
Coke, for casting	5
Charcoal	300 kg
Wood	80 Pakings

13. Products:

Description	Quantity
Agricultural machines	65
Repairs	15

15. Disposition of finished goods:

Description	Quantity	Source of Sale
Agricultural machines	60	Obata Co., etc.
Repairs	15	Taico Boki Co., Ltd.

14. Prices:

Description	Unit	Price
Agricultural machine	per set	2,700
Repairs		2,000

16. Present stock of finished goods:

Description	Quantity	Condition
Agricultural machines	48 set	
Working machines	4	

17. Remarks:

Signed: Tajiro Satake
 Title: Superintendent

Monthly production report
of Industrial facilities

File No.: 111
To: _____
Thru: _____
Date: June 1948

1. Name of facility: K. K. Ozaki Tekkasho, Ozaki Kogyo.
2. Location: No. 480 Imajuku, Miki-mura, Ampati-gun, Gifu-ken.
3. Name of president or manager: Mr. Zutaka Ohashi.
4. Reconversion permit No: Gifu prefectural order Sho-2478.
Dated: 13 Dec. 1945.

5. Name and Address of parent Co.: None.
6. Present Capitalization in Yen: ¥4,000,000.
7. No. of Employees: 76

8. Machinery and Equipment in plant:

Description	Quantity	Condition
Lathes	16	20 in use
Drilling machines	12	4 " "
Boring machines	2	1 " "
Grinding machines	6	2 " "
Milling machines	21	3 " "
Gear Hopping machines	2	1 " "
Planers	6	1 " "
Shapers	10	2 " "
Slotting machines	4	1 " "
Metal saws	5	2 " "
Gear tooth Chamfering machine	1	1 " "
Industrial machines	17	4 " "
Electrial machines	35	17 " "
precision measuring machines	4	2 " "

9. Present stock of Raw materials Supplied and Unfinished goods:

Description	Quantity	Condition
Materials:		
Steel	4.0 ton	
Special steel	37.0 "	
Pig iron	4.0 "	
Scrap pig-iron	60.0 "	

Unfinished goods:

Agricultural machines	20 set
Woodworking machines	3 "

10. Acquisition of Raw material:

Description	Quantity	Source
None.		