

# AIRCRAFT ACTION REPORT

RESTRICTED  
(Reclassify when filled out)

## CONFIDENTIAL

### I. GENERAL

(a) Unit Reporting **VC-97** (b) Based on or a **USS MAKASSAR STRAIT(OVR-91)** (c) Report No. **5**  
 (d) Take off: Date **13 April 1945** Time (LZT) **1000** (Zone); Lat. **25-26N** Long. **128-22E**  
 (e) Mission **D.S.G. IN SHINA** (f) Time of Return **1410** (Zone) **ITEM**

### II. OWN AIRCRAFT OFFICIALLY COVERED BY THIS REPORT.

TYPE (a)	SQUADRON (b)	NUMBER			BOMBS AND TORPEDOES CARRIED (PER PLANE) (f)	FUZE, SETTING (g)
		TAKING OFF (c)	ENGAGING ENEMY A/C (d)	ATTACKING TARGET (e)		
<b>F4U-2</b>	<b>VC-97</b>	<b>4</b>	<b>0</b>	<b>4</b>	<b>1600 rds. 50 cal. ammo. 6 (5" HB Rockets)</b>	<b>Inst.</b>

### III. OTHER U. S. OR ALLIED AIRCRAFT EMPLOYED IN THIS OPERATION.

TYPE	SQUADRON	NUMBER	BASE	TYPE	SQUADRON	NUMBER	BASE
<b>None</b>							

### IV. ENEMY AIRCRAFT OBSERVED OR ENGAGED (By Own Aircraft Listed in II Only).

(a) TYPE	(b) NO OBSERVED	(c) NO. ENGAGING OWN A/C	(d) TIME ENCOUNTERED	(e) LOCATION OF ENCOUNTER	(f) BOMBS, TORPEDOES CARRIED; GUNS OBSERVED	(g) CAMOUFLAGE AND MARKING
<b>None</b>			(ZONE)			
			(ZONE)			
			(ZONE)			

(h) Apparent Enemy Mission(s) \_\_\_\_\_  
 Did Any Part of \_\_\_\_\_  
 (i) Encounter(s) Occur in Clouds? \_\_\_\_\_ If so, Describe Clouds \_\_\_\_\_  
(YES OR NO) (BASE IN FEET, TYPE AND TENTHS OF COVER)  
 Time of Day and Brilliance \_\_\_\_\_  
 (j) of Sun or Moon \_\_\_\_\_ (k) Visibility \_\_\_\_\_  
(NIGHT, BRIGHT MOON; DAY, OVERCAST; ETC.) (MILES)

### V. ENEMY AIRCRAFT DESTROYED OR DAMAGED IN AIR (By Own Aircraft Listed in II Only).

(a) TYPE ENEMY A/C	(b) DESTROYED OR DAMAGED BY:				(c) WHERE HIT, ANGLE	(d) DAMAGE CLAIMED
	TYPE A/C	SQUADRON	PILOT OR GUNNER	GUNS USED		
<b>None</b>						

# AIRCRAFT ACTION REPORT

RESTRICTED  
(Reclassify when filled out)  
**CONFIDENTIAL**

REPORT No. **5**

## VI. LOSS OR DAMAGE, COMBAT OR OPERATIONAL, OF OWN AIRCRAFT (of those listed in II only).

(a) TYPE OWN A/C	(b) SQUADRON	(c) CAUSE: TYPE ENEMY A/C, TYPE GUN, OR OPERATIONAL CAUSE	(d) WHERE HIT, ANGLE (List armor, self-sealing tanks, equipment hit)	(e) EXTENT OF LOSS OR DAMAGE, (Give Bureau serial number of planes destroyed)
1		<b>None</b>		
2				
3				
4				
5				
6				
7				
8				
9				
10				
11				
12				
13				
14				

## VII. PERSONNEL CASUALTIES (in aircraft listed in II only; identify with planes listed in VI by Nos. at left).

(a) NO.	(b) SQUADRON	(c) NAME, RANK OR RATING	(d) CAUSE	(e) CONDITION OR STATUS
		<b>None</b>		

## VIII. RANGE, FUEL, AND AMMUNITION DATA FOR PLANES RETURNING

•(a) TYPE A/C	(b) MILES OUT	(c) MILES RETURN	(d) AV. HOURS IN AIR	(e) AV. FUEL LOADED	(f) AV. FUEL CONSUMED	(g) TOTAL AMMUNITION EXPENDED				(h) NO. OF PLANES RETURNING
						.30	.50	20MM	MM	
<b>M-2</b>	<b>62</b>	<b>58</b>	<b>4.2</b>	<b>217</b>	<b>180</b>		<b>4600</b>			<b>4</b>

## IX. ENEMY ANTI-AIRCRAFT ENCOUNTERED (Check one block on each line).

CALIBER	NONE	MEAGER	MODERATE	INTENSE
HEAVY — Time-fused shells, 75mm and over	<b>X</b>			
MEDIUM — Impact-fused shells, 20mm-50mm	<b>X</b>			
LIGHT — Machine gun bullets, 6.5mm-13.2mm	<b>X</b>			

## X. COMPARATIVE PERFORMANCE, OWN AND ENEMY AIRCRAFT (use check list at left).

SPEED, CLIMB,  
at various altitudes

SPEED, CLIMB,  
at various altitudes  
 TURNS  
 DIVES  
 CEILINGS  
 RANGE  
 PROTECTION  
 ARMAMENT

# AIRCRAFT ACTION REPORT

RESTRICTED  
(Reclassify when filled out)

## CONFIDENTIAL

(OMIT THIS SHEET IF NO ATTACK WAS MADE)

REPORT No. 5

### XI. ATTACK ON ENEMY SHIPS OR GROUND OBJECTIVES (By Own Aircraft Listed in II Only).

- (a) Target(s) and Location(s) See below (FOR SHIPS INCLUDE ALL IN AREA UNDER ATTACK) (b) Time Over Target(s) 1045-1245 (Zone) ITM
- (c) Clouds Over Target 1/10 coverage at 3000 feet (BASE IN FEET, TYPE AND TENTHS OF COVER)
- (d) Visibility of Target Hazy but good (CLEAR, HAZY, PARTIALLY OBSCURED BY CLOUDS, ETC.) (e) Visibility 10 (MILES)
- (f) Bombing Tactics: Type \_\_\_\_\_ Bomb Sight Used \_\_\_\_\_ (LEVEL, GLIDE OR DIVE) (TYPE)
- Bombs Dropped per Run \_\_\_\_\_ Spacing \_\_\_\_\_ Altitude of Bomb Release \_\_\_\_\_ (NUMBER) (FEET) (FEET)
- (g) Number of Enemy Aircraft Hit on Ground: Destroyed 1 Probably Destroyed \_\_\_\_\_ Damaged \_\_\_\_\_

(h) AIMING POINT	(i) DIMENSIONS OR TONNAGE	(j) NO A/C ATTACKING (k) SQUADRON	(l) BOMBS AND AMMUNITION EXPENDED, EACH AIMING POINT	(m) NO HITS On Aiming Point	(n) DAMAGE (None, slight, serious, destroyed or sunk)
1 Camouflaged emplacements	See below	4 VF VF-97	1000 rds. 50 cal. 8 R.P.'s	See below	Unobserved
2 Camouflaged Tony Small buildings	See below	4 VF VF-97	1500 rds. 50 cal. 10 R.P.'s	See below	Destroyed
3 buildings	See below	4 VF VF-97	2100 rds. 50 cal. 6 R.P.'s	2 R.P.'s See below	3 burned
4					
5					
6					
7					
8					

(o) RESULTS: (For all hits claimed on ship targets and for land targets of special interest, draw diagram, top or side view or both, as appropriate, showing type and location of hits. For all targets give location and effect of hits, and identify by numbers above. Use additional sheets if necessary).

**Target 1:** Located in TA's 5332 S,T,X,Y., each of which lettered areas was 200 yds. X 200 yds. Hits in area, damage unobserved.

**Target 2:** Located in TA5433 B. No rocket hits observed, but destroyed by 50 cal.

**Target 2:** Located in TA9033 (1000 yds. X 1000 yds.) More definite location could not be obtained.

**Ref:** Air Support Charts, Okinawa, of 64th Engr. Top. Bn. USAFOPBC, of December 1944.

(p) Were Photographs Taken? No Photographs of Damage, When Taken, Should Be Attached By Staple.

**Photos attached were taken by photo plane on 12 April 1945**

# AIRCRAFT ACTION REPORT

RESTRICTED  
(Reclassify when  
filled out)  
**CONFIDENTIAL**

REPORT No. 5

**XII. TACTICAL AND OPERATIONAL DATA.** (Narrative and comment. Describe action fully and comment freely, following applicable items in check list at left. Use additional sheets if necessary.)

## ENGAGEMENT WITH ENEMY

### OWN AIRCRAFT

Disposition  
Altitudes  
Speeds  
Approach Tactics  
Use of Cover, Deception  
Angles of Attack and  
Their Effectiveness  
Distance of Opening Fire  
Defense Tactics and  
Their Effectiveness

### ENEMY AIRCRAFT

Method of Locating, Distance  
Disposition  
Altitudes  
Speeds  
Approach Tactics  
Use of Cover, Deception  
Angles of Attack  
Distance of Opening Fire  
Defensive Tactics

### COMMENTS AND RECOMMENDATIONS

Own Weaknesses  
Enemy Weaknesses  
Offensive Tactics, Own  
" " , Enemy  
Defensive Tactics, Own  
" " , Enemy  
Flexible Gunnery, Own  
Escort Tactics  
Fighter Direction  
Use of Radar  
Night Fighting  
Recognition, Aircraft

## ATTACK

### OWN TACTICS

Method of Locating Target  
Approach to Target  
Altitudes, Speeds  
Approach  
Dive  
Pull-Out  
Dive Angle  
Strafing  
Retirement  
Defensive Tactics  
Use of Jamming

### DEFENSE, ENEMY

Evasive Tactics, Ships  
Concealment  
Searchlights  
Night Fighter Tactics  
Use of Jamming

### COMMENTS AND RECOMMENDATIONS

Bombing Tactics  
Torpedo Tactics  
Effectiveness of  
Bombs, Torpedoes  
Selection of Targets  
Fuzing  
Strafing Tactics  
Defensive Tactics  
Use of Radar  
Reconnaissance  
Photography  
Briefing

## OPERATIONAL

Navigation  
Homing  
Rendezvous  
Recognition, Ships  
Communications  
Flight Operations  
Search and Tracking  
Base Operations  
Maintenance

**Lt. John H. ANDREWS, USNR, led this flight of four FM-2's against targets on Ie Shima.**

**Targets attacked were as given on the preceding page.**

**As against the camouflaged emplacements, each of the fighters strafed and fired 2 rockets. Hits were observed, but the nature of the target made assessment of the damage impossible.**

**The camouflaged Tony was hit by strafing and accounted destroyed. No rockets hit.**

**The small buildings, mentioned as the third target, were hit by both rockets and strafing, and three of them were assessed as destroyed.**

**Pilots in this flight made 40 degree strafing and rocket attacks, averaging 6 runs per target, 2 rockets per run.**

# AIRCRAFT ACTION REPORT

RESTRICTED  
**CONFIDENTIAL**

REPORT No. 5

**XIII. MATERIAL DATA.** (Comment freely on performance or suitability, following check list at left.  
Use additional sheets if necessary).

**ARMAMENT**

Guns, Gunsights  
Turrets  
Ammunition  
Bombs, Torpedoes  
Bomb Sights  
Bomb Releases

**COMMUNICATIONS**

Radio, Radar  
Homing Devices  
Visual Signals  
Codes, Ciphers

**RECOGNITION**

IFF  
Signals  
Battle Lights  
Procedures

**PROTECTION**

Armor; Points and Angles  
of Fire Needing Further  
Protection  
Leak Proofing

**EMERGENCY EQUIPMENT**

Parachutes  
Life Belts, Life Rafts  
Safety Belts  
Emergency Kits  
Rations, First Aid

**NAVIGATIONAL EQUIPMENT**

Compasses  
Driftsights  
Octants  
Automatic Pilots  
Charts  
Field Lighting

**INSTRUMENTS**

Flight  
Power Plant

**OXYGEN SYSTEM**

**CAMOUFLAGE AND  
DECEPTION DEVICES**

**STRUCTURE**

Airframe  
Control Surfaces  
Control System  
Dive Flaps  
Landing Gear  
Heating System  
Flight Characteristics  
At Various Loadings

**POWER PLANT**

Engines  
Engine Accessories  
Propellers  
Lubricating System  
Starters  
Exhaust Dampers

**HYDRAULIC SYSTEM**

**ELECTRICAL SYSTEM**

Auxiliary Plant  
Lights

**FUEL SYSTEM**

**FLIGHT CLOTHING**

**MAINTENANCE**

**BASE FACILITIES**

Plane Servicing Equipment  
Personnel Facilities

**No Comments.**

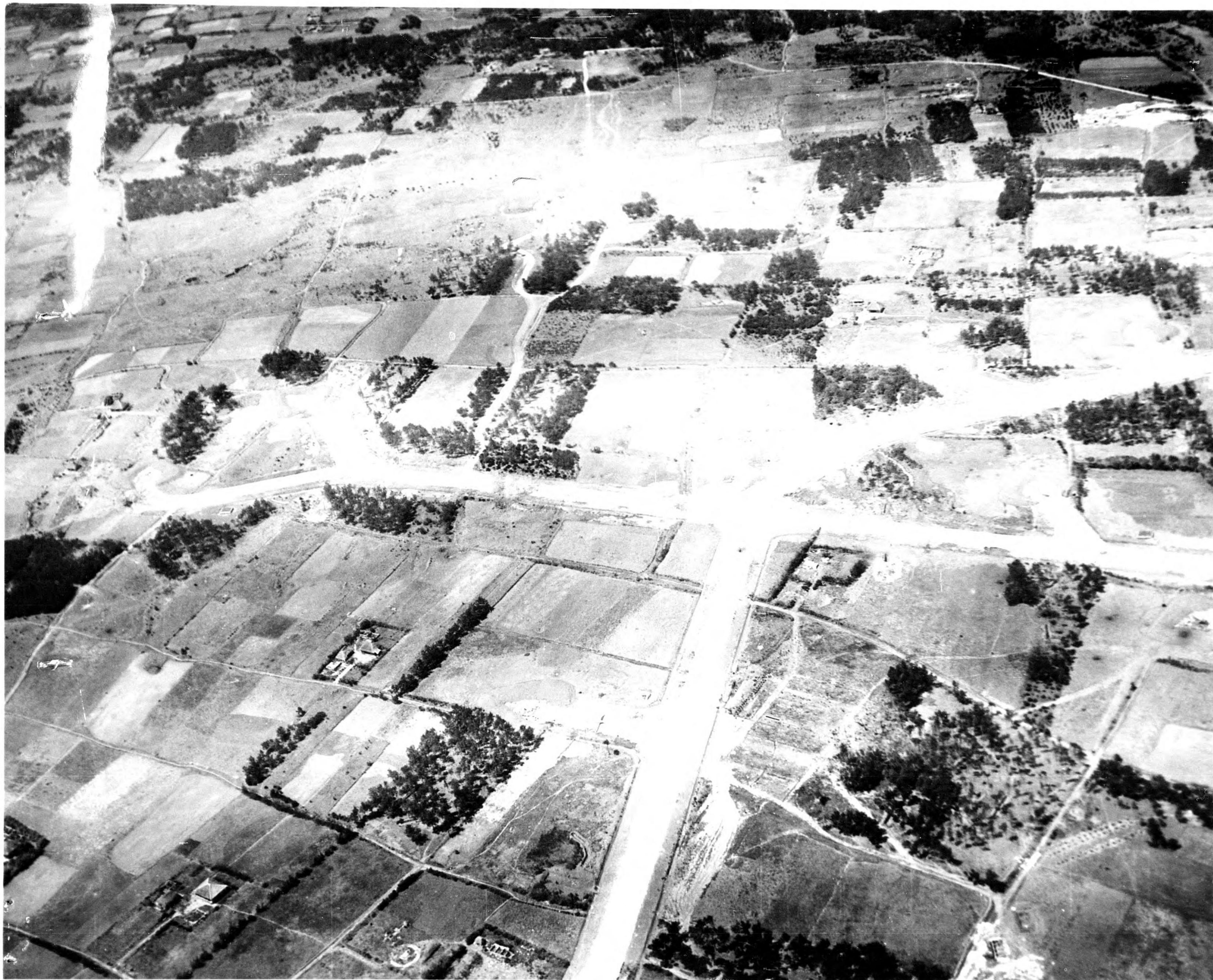
REPORT PREPARED BY:

APPROVED BY:

**W. H. BRADEN, Jr. Lt., USNR, AGI Officer**  
SIGNATURE RANK AND DUTY

**N. T. WHITTIER, Lt. Comdr., USNR**  
SIGNATURE RANK AND DUTY  
**Commanding Officer**

**13 April 1945**  
DATE



I E SHIMA 4.12.45 REVETMENTS SHOWING DAMAGED AIRCRAFT



I E SHIMA AIRFIELD 4-12-45 SHOWING DAMAGE DONE TO FIELD BY JAPS