

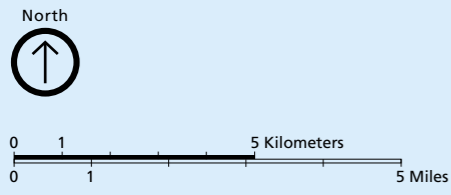
**Pictured Rocks National Lakeshore** consists of two zones. The Lakeshore Zone is federal land managed by the National Park Service (NPS). The Inland Buffer Zone is a mixture of federal, state, and private ownership. Please respect the rights of private landowners.

- Lakeshore Zone (NPS)
- Inland Buffer Zone (mixed ownership)
- Wilderness within Lakeshore Zone (NPS)

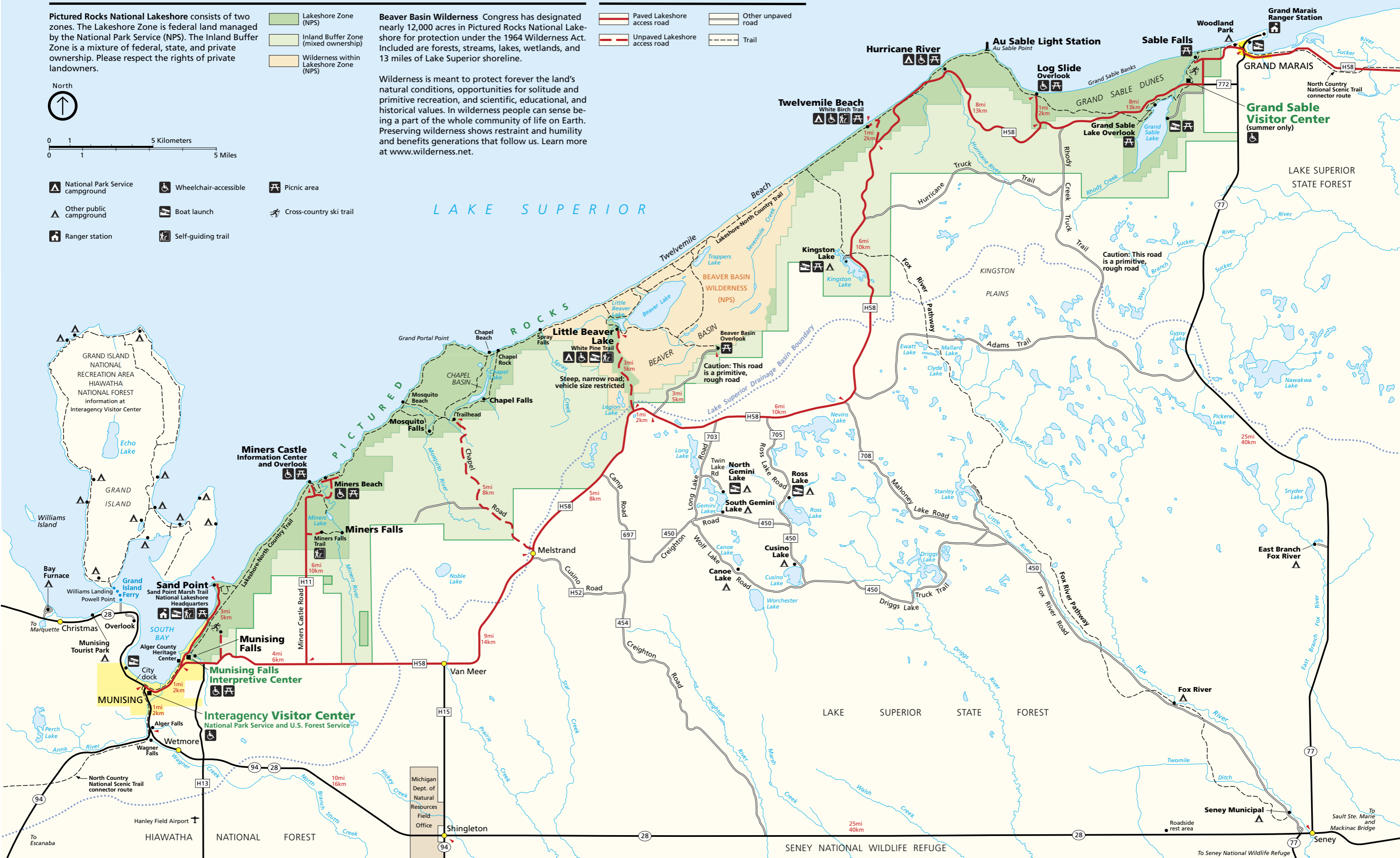
**Beaver Basin Wilderness** Congress has designated nearly 12,000 acres in Pictured Rocks National Lakeshore for protection under the 1964 Wilderness Act. Included are forests, streams, lakes, wetlands, and 13 miles of Lake Superior shoreline.

Wilderness is meant to protect forever the land's natural conditions, opportunities for solitude and primitive recreation, and scientific, educational, and historical values. In wilderness people can sense being a part of the whole community of life on Earth. Preserving wilderness shows restraint and humility and benefits generations that follow us. Learn more at [www.wilderness.net](http://www.wilderness.net).

- Paved Lakeshore access road
- Unpaved Lakeshore access road
- Other unpaved road
- Trail



- National Park Service campground
- Other public campground
- Ranger station
- Wheelchair-accessible
- Boat launch
- Self-guiding trail
- Picnic area
- Cross-country ski trail



SENEY NATIONAL WILDLIFE REFUGE

To Seney National Wildlife Refuge