

C
Sa225H
1915/16

UNIVERSITY OF MINN. LIBRARY

ST. BENEDICT'S COLLEGE & ACADEMY



St. Joseph, Minn.

~~1914-15~~
~~1915-16~~

UNIVERSITY OF MINN. LIBRARY

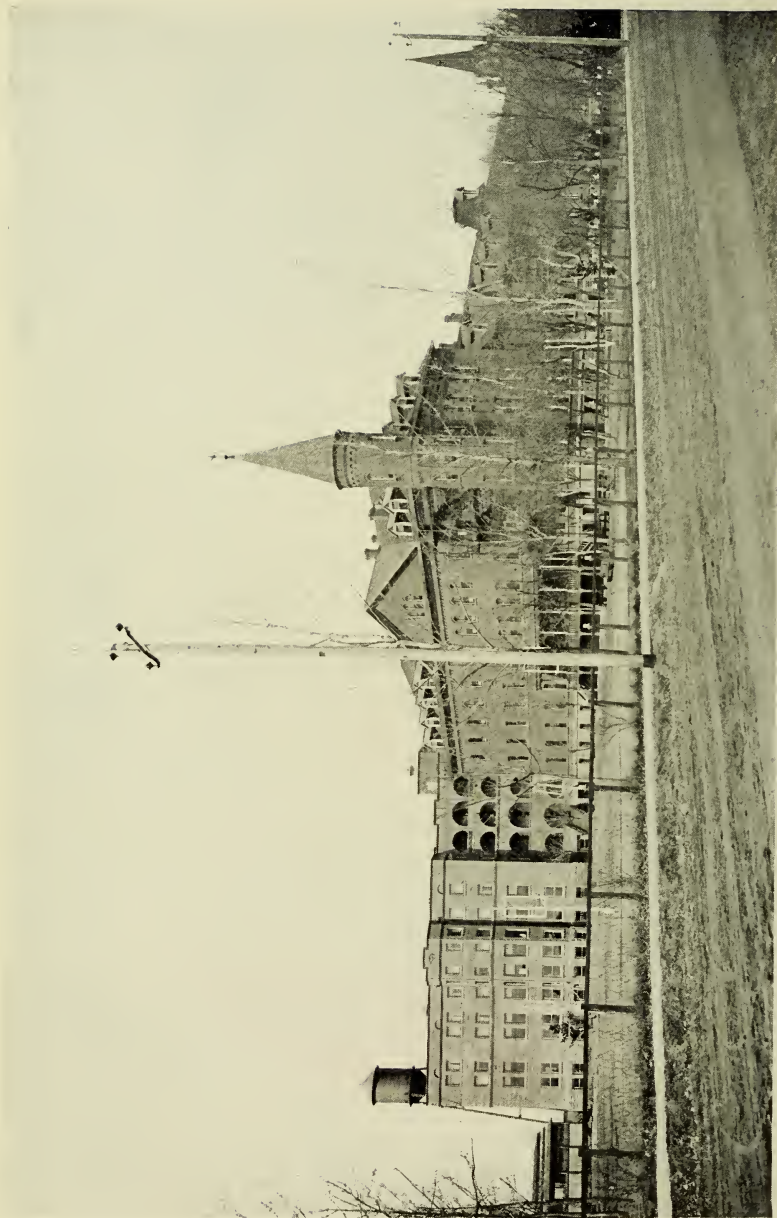
GEORGE S. HARRIS

UNIVERSITY OF ILLINOIS LIBRARY



Digitized by the Internet Archive
in 2014

<https://archive.org/details/annualyearbook1915stbe>



ST. BENEDICT'S COLLEGE AND ACADEMY

U. I. O. G. D.

Thirty-third Annual Year-Book

St. Benedict's College and Academy



A Boarding School for Girls

Conducted by the Sisters of St. Benedict





UNDER THE IMMEDIATE DIRECTION OF
RIGHT REVEREND JOSEPH F. BUSCH, D. D.
BISHOP OF ST. CLOUD

CALENDAR 1915-1916

							1915																				
JANUARY							FEBRUARY							MARCH							APRIL						
S	M	T	W	T	F	S	S	M	T	W	T	F	S	S	M	T	W	T	F	S	S	M	T	W	T	F	S
..	1	2	..	1	2	3	4	5	6	..	1	2	3	4	5	6	1	2	3
3	4	5	6	7	8	9	7	8	9	10	11	12	13	7	8	9	10	11	12	13	4	5	6	7	8	9	10
10	11	12	13	14	15	16	14	15	16	17	18	19	20	14	15	16	17	18	19	20	11	12	13	14	15	16	17
17	18	19	20	21	22	23	21	22	23	24	25	26	27	21	22	23	24	25	26	27	18	19	20	21	22	23	24
24	25	26	27	28	29	30	28	28	29	30	31	25	26	27	28	29	30	..
31
MAY							JUNE							JULY							AUGUST						
S	M	T	W	T	F	S	S	M	T	W	T	F	S	S	M	T	W	T	F	S	S	M	T	W	T	F	S
..	1	1	2	3	4	5	1	2	3	1	2	3	4	5	6	7
2	3	4	5	6	7	8	6	7	8	9	10	11	12	4	5	6	7	8	9	10	8	9	10	11	12	13	14
9	10	11	12	13	14	15	13	14	15	16	17	18	19	11	12	13	14	15	16	17	15	16	17	18	19	20	21
16	17	18	19	20	21	22	20	21	22	23	24	25	26	18	19	20	21	22	23	24	22	23	24	25	26	27	28
23	24	25	26	27	28	29	27	28	29	30	25	26	27	28	29	30	31	29	30	31
30	31
SEPTEMBER							OCTOBER							NOVEMBER							DECEMBER						
S	M	T	W	T	F	S	S	M	T	W	T	F	S	S	M	T	W	T	F	S	S	M	T	W	T	F	S
..	1	2	3	1	2	..	1	2	3	4	5	6	1	2	3	4
5	6	7	8	9	10	11	3	4	5	6	7	8	9	7	8	9	10	11	12	13	5	6	7	8	9	10	11
12	13	14	15	16	17	18	10	11	12	13	14	15	16	14	15	16	17	18	19	20	12	13	14	15	16	17	18
19	20	21	22	23	24	25	17	18	19	20	21	22	23	21	22	23	24	25	26	27	19	20	21	22	23	24	25
26	27	28	29	30	24	25	26	27	28	29	30	28	29	30	26	27	28	29	30	31	..
..	31

FRANKLIN 50-591.

							1916																					
JANUARY							FEBRUARY							MARCH							APRIL							
S	M	T	W	T	F	S	S	M	T	W	T	F	S	S	M	T	W	T	F	S	S	M	T	W	T	F	S	
..	1	1	2	3	4	5	1	2	3	4	1	
2	3	4	5	6	7	8	6	7	8	9	10	11	12	5	6	7	8	9	10	11	2	3	4	5	6	7	8	
9	10	11	12	13	14	15	13	14	15	16	17	18	19	12	13	14	15	16	17	18	9	10	11	12	13	14	15	
16	17	18	19	20	21	22	20	21	22	23	24	25	26	19	20	21	22	23	24	25	16	17	18	19	20	21	22	
23	24	25	26	27	28	29	27	28	29	26	27	28	29	30	31	..	23	24	25	26	27	28	29	
30	31	30	
MAY							JUNE							JULY							AUGUST							
S	M	T	W	T	F	S	S	M	T	W	T	F	S	S	M	T	W	T	F	S	S	M	T	W	T	F	S	
..	1	2	3	4	5	6	1	2	3	1	2	3	1	2	3	4	5
7	8	9	10	11	12	13	4	5	6	7	8	9	10	2	3	4	5	6	7	8	6	7	8	9	10	11	12	
14	15	16	17	18	19	20	11	12	13	14	15	16	17	9	10	11	12	13	14	15	13	14	15	16	17	18	19	
21	22	23	24	25	26	27	18	19	20	21	22	23	24	16	17	18	19	20	21	22	20	21	22	23	24	25	26	
28	29	30	31	25	26	27	28	29	30	..	23	24	25	26	27	28	29	27	28	29	30	31	
..	30	31	
SEPTEMBER							OCTOBER							NOVEMBER							DECEMBER							
S	M	T	W	T	F	S	S	M	T	W	T	F	S	S	M	T	W	T	F	S	S	M	T	W	T	F	S	
..	1	2	1	2	3	4	5	6	7	1	2	3	4	1	2	
3	4	5	6	7	8	9	8	9	10	11	12	13	14	5	6	7	8	9	10	11	3	4	5	6	7	8	9	
10	11	12	13	14	15	16	15	16	17	18	19	20	21	12	13	14	15	16	17	18	10	11	12	13	14	15	16	
17	18	19	20	21	22	23	22	23	24	25	26	27	28	19	20	21	22	23	24	25	17	18	19	20	21	22	23	
24	25	26	27	28	29	30	29	30	31	26	27	28	29	30	24	25	26	27	28	29	30	
..	31	

FRANKLIN 50-591.

CALENDAR
1915-16

Entrance Registration and Classification Wednesday, Sept. 1, 1915
Second Semester begins - - Wednesday, Jan. 19, 1916
Commencement - - - - Wednesday, June 7, 1916

VACATIONS

Thanksgiving Day only - - Thursday, Nov. 25, 1915
Christmas Vacation begins - Friday morning, Dec. 17, 1915
School re-opens - - - Tuesday morning, Jan. 4, 1916
Easter Vacation begins - Wednesday morning, April 19, 1916
School re-opens - - Wednesday morning, April 26, 1916

In applying for Year-Book or Information, address

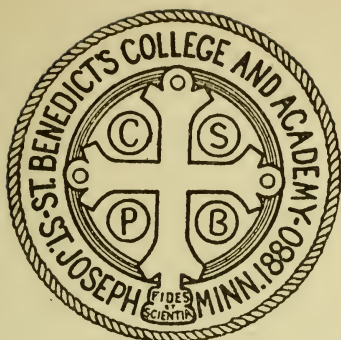
SISTER DIRECTRESS

St. Benedict's College and Academy

St. Joseph, Stearns County, Minnesota



EAST CAMPUS



ST. BENEDICT'S College and Academy, conducted by the Sisters of St. Benedict, is situated in a healthful and pleasant locality, eight miles from St. Cloud and four miles from St. John's University. St. Benedict's was founded in 1880 and incorporated as an educational institution March 23, 1887.

RAILWAY AND TELEPHONE CONNECTIONS

The main line of the Great Northern Railroad passes through St. Joseph, and connections with various lines of railroad can be made at St. Cloud. Pupils coming for the first time will be met by a Sister at any station in St. Cloud, if timely notice is sent to the College. The St. Benedict's office of the Northwestern Telephone Exchange Company is within the building. There is also a telegraph office, through which communication may be held with all outside points.

BUILDINGS

The building is constructed of brick on a basement of stone. It is really made up of six buildings erected at different times to meet the increasing demands. Two large and absolutely fireproof buildings with all modern conveniences have recently been completed. Noticeable features of this institution are its sanitary drinking fountains, electric elevator, numerous baths, shower baths, open fireplaces,

and perfect ventilation. A power house furnishes steam heating, hot water, and electric light for all the buildings.

The buildings are amply protected by outside fire escapes. Canvas fire escapes, chemical fire extinguishers, and standpipes with fire hose attached, are distributed on every floor. There is also a plug in the College yard. A night watch makes regular rounds of the buildings several times each night.

GROUNDS

Extensive and beautiful grounds surround the buildings, where pupils have ample advantages for healthful exercise. Shady seats are provided at various points, and croquet grounds, basket ball, and tennis are included in the school grounds. In winter, there are good opportunities for skating. Broad loggias and verandas, on the south side of the house, give shelter and opportunity for exercise in stormy weather, or rest on warm afternoons.

Long walks to the Mill Stream Farm, and rambles in the woods, are pleasant themes to the girls who now roam there, and also to those who have long since bidden adieu to St. Benedict's.

PRIVATE ROOMS AND DORMITORIES

The private rooms are perfectly heated, and full of light and sunshine. They have mahogany finish, with furniture to correspond. All of the rooms have hardwood floors, tinted walls, clothes closets, set bowls with running water, hot and cold, and some of them private baths. For the safety of property, chafing dishes, or other portable heating appliances, may not be used in the rooms. Pupils care for their rooms and are held responsible for their condition.

In the dormitory, each pupil has a separate curtained alcove containing bed, wash-stand, and chair. Closely connected with the sleeping apartments are numerous baths plentifully supplied with hot and cold water.

LIBRARY AND READING ROOMS

A library is open to the school without extra charge. A full supply of the standard reference books, dictionaries, and encyclo-

pedias furnish necessary information upon the subjects talked about in the class room. It is open to pupils for consultation at stated times. There are, also, sectional or branch libraries, located in various departments, selected with a special view to the particular wants of the pupils and members of these departments.

Separate reading rooms provide opportunity to read books, current periodicals, and journals amid quiet surroundings.

ASSEMBLY HALL

The assembly hall is a spacious auditorium that serves for large assemblies, and as a study-hall for the advanced pupils. A stage with scenery and stage settings, at one end, is well arranged for dramatic performances, recitals, and lectures.

THE LABORATORIES

No pains have been spared to secure a physical laboratory worthy of the name, and, as a result, the institution has a collection of instruments for illustrating the laws of sound, light, electricity, heat, and magnetism, as well as the principles of mechanics.

The chemical laboratory is equipped for all the experiments necessary to make the study of chemistry practical and interesting.

The botanical laboratory has all the necessary equipments for good class work.

MUSEUM

The museum cabinets contain a collection of geological, mineralogical, and zoölogical specimens. The department is supplemented by a complete natural cabinet, the value of which cannot be overestimated in the grades, nor in the high schools. Valuable discipline in observation is gained and the class instruction is made more definite and comprehensive by seeing the specimens.

HEALTH AND COMFORT

Special care is taken to preserve the health of the pupils. Our table is supplied with every variety of wholesome food. The drinking

water is pure and unusually healthful. Playground, gymnasium, and recreation halls afford ample opportunity and incentive for healthful exercise.

Rooms are set apart, and arranged especially for the comfort of the sick, or those requiring rest or temporary relief from study. A separate building furnishes complete isolation in case of contagious disease. A trained nurse is charged with the supervision of the health of the pupils, and the House Physician is within easy call. Physician's fees and medicine bills must be paid by the pupils, and hospital rates are charged for nursing during prolonged illness.

RELIGIOUS TRAINING

The institution, as distinctly Catholic, offers every opportunity to obtain a thorough knowledge of Christian Doctrine; therefore, religious instruction forms an organic part of the curriculum.

Pupils of all denominations are received, but, for the sake of uniformity and the preservation of discipline, all pupils are required to be present at the public religious exercises.

THE LEAGUE OF THE SACRED HEART

The League of the Sacred Heart has for its representatives all the Catholic pupils.

The pious practices of this confraternity effect much good among the members, and the monthly General Communion, which it ordains, is a powerful factor in training them to become dutiful children of the Church.

THE SODALITY OF THE BLESSED VIRGIN

The Sodality of the Blessed Virgin has for its members Catholic young ladies who, by exemplary deportment, have proved themselves worthy to become the children of Mary.

SOCIAL TRAINING

A series of talks is given throughout the year upon polite forms and the requirements of good breeding. Individual faults are pri-



THE NEW CHAPEL.

vately and kindly pointed out. One evening of almost every week is devoted to social functions of some kind, under the direction of the faculty. These consist of educational plays, musical programs, literary entertainments, lectures with stereopticon, and receptions by the different classes. These occasions have as their object the cultivation of social life, as well as recreation and pleasure.

Lectures on various subjects are given from time to time during the year, and are a permanent feature of the school.

THE SHAKESPERE DRAMATIC CLUB

This club adds to the interest of the school by giving literary plays and entertainments at various times during the scholastic year. Any advanced pupil of the elocution class may become a member of this club.

ST. BENEDICT'S ALUMNAE ASSOCIATION

The St. Benedict's Alumnae Association was organized by the Class of 1914. The objects of this Association are to form a bond among the graduates; to perpetuate in the hearts of the graduates the memory of their Alma Mater; and to promote the interests of St. Benedict's.

The following generous gifts of the Alumnae Association have been recorded:

Bust of Jupiter, and furnishing of stage equipment.

TO PARENTS AND GUARDIANS

When a pupil is placed under our care, it is assumed that certain results in the development of her physical, mental, and spiritual nature are desired. After the experience of many years in educational work, we feel justified in saying that it is impossible to attain these ends unless parents and guardians co-operate with us in our system of training, and, by respecting our regulations and requirements, enable us to accomplish the work.

Parents are earnestly requested to co-operate with the teachers

in avoiding interruptions in school exercises, and to promote habits of regular attendance. The presence of all pupils the last day preceding and the first day following any vacation is especially requested. The best work in school depends upon the regular attendance of every pupil at every recitation. Absences interferé not only with school progress, but make the attainment of satisfactory results difficult, if not impossible. Attendance at the Commencement exercises is required by all.

Since the interests of all pupils must be considered, a girl whose influence upon others proves harmful, or whose general demeanor after a fair trial shows her to be out of harmony with her environment, will not be allowed to remain in the school. Girls who cannot learn to be courteous in speech and amenable to the general discipline of the school, or who prove themselves repeatedly untrustworthy, are not suitable members of our household. For new pupils, a testimonial of good conduct from the last school attended is required.

SPECIAL REMARKS

Direct correspondence is permitted only with relatives and friends, with the approval of the Directress.

Pupils are required to write at least once a week to parents or guardians.

All letters written or received by pupils below the Senior Academic Class are subject to inspection; as are also books and packages brought to the school, addressed to the pupils while at school, or which they wish to send away. Anything objectionable will neither be delivered nor forwarded.

No young lady is allowed to have any book, paper, or magazine that is not approved by the authorities of the College.

Dentistry, shopping, and dressmaking ought to be attended to as far as possible before coming to school, so as not to interfere with the regular school work of the pupil.

Pupils are received only under the condition that they are willing to conform to the rules of this institution.

REPORTS AND STANDINGS

Regular reports of deportment, scholarship, and attendance will be sent to parents or guardians three times during the year.

75 is the passing mark.

The standing of pupils is classified as follows:

75-80, passed.

80-90, passed with credit.

90-100, passed with honor.

Class standings in the school are determined in the following manner: One-third from daily recitations, one-third from daily application, and one-third from written tests.

Students, who have maintained an average class standing of 90 per cent in any subject, and whose deportment reaches the 95 per cent standard, will be advanced in that subject without examination.



THE COLLEGE
AND
THE ACADEMY

DEPARTMENTS OF THE
SCHOOL

1. Collegiate Department
2. Normal Department
3. Music Department
4. Art Department
5. Expression Department
6. Domestic Science Department
7. Academic Department
8. Commercial Department
9. Preparatory Department
10. Primary Department

COLLEGIATE DEPARTMENT

REQUIREMENTS FOR ADMISSION TO THE FRESHMAN CLASS

The purpose of St. Benedict's College is the higher education of women. In order to attain this end, the work has been outlined for four years of college work, in conformity with the best educational standards.

Applicants for admission to the Freshman class of the College Course must, by presenting diplomas or certificates, furnish evidence that they have completed the preparatory requirements. Number of credits required for admission are fifteen year-credits in high school subjects. English 4, Mathematics 2, History 2, Language 2, Science 2, Elective 3.

The term credit means not less than five recitations of forty minutes each, per week, for a period of thirty-six weeks, or a total of one hundred twenty hours.

Applicants having deficiencies not exceeding one year-credit may be admitted upon condition that they take examination in the conditioned subjects at some appointed time.

COLLEGIATE COURSE

<i>Freshman Year</i>	<i>Sophomore Year</i>	<i>Junior Year</i>	<i>Senior Year</i>
Religion	Religion	Religion	Religion
English	English	English	Philosophy
Logic	Philosophy	Philosophy	Science
Psychology	Mathematics	History	Major Study
Mathematics	History	Science	First Minor
History	Latin	Major Study	Second Minor
Latin	Greek	First Minor	
Greek	Science	Second Minor	
Science	French		
French	German		
German			

RELIGION

- I. Present Organization and Status of the Church.
- II. Origin and Development of the Church.
- III. Exercise of Teaching and Ruling Authority.
- IV. Work of Sanctification.

ENGLISH

- I. Formal Rhetoric.
- II. General Survey of English Literature.
History of American Literature.
- III. Eighteenth Century Literature.
Comparative or World Literature.
- IV. History of the English Language.
Comparative Philology, Old and Middle English.

LATIN

- I. Livy I, II, XXI, XXII.
Latin Composition based on Livy's Text.
- II. Horace.
Selections from odes, epodes, satires and epistles. The
life and literary art of Horace.

GREEK

- I. Course for Beginners.
Prose Composition.
- II. History and Epic Poetry.
Anabasis and Iliad.
Sight Reading.
- III. Historical Prose.
Xenophon and Herodotus.
Composition.
- IV. Lysias, Plato, Homer.
Orations, Apology, Odyssey.
Composition.



FRENCH

- I. Collegiate Course for Beginners.
Composition and Sight Reading.
- II. French Literature.
Composition and Advanced Composition.

GERMAN

- I. Grammar.
Conversation.
Composition.
- II. History of German Literature.
Selections from Schiller, Goethe, Lessing.

HISTORY

- I. Ancient History (to Fifth Century).
Oriental Nations—Greece and Rome.
- II. Mediæval History.
Fall of Roman Empire.
Rise of Papacy.
Mohammedanism.
Crusades.
Feudalism (to Fifteenth Century).
- III. Modern European History.
The Renaissance (Fifteenth Century to Present Day).
- IV. Political and Constitutional History of United States.
Sociology.

PHILOSOPHY

- I. a. Logic { Reasoning.
Method.
- b. Psychology { Knowledge.
Feeling.
Acting and Willing.
- II. a. Ethics { Fundamental.
Applied.
- b. Theodicy—Existence and Nature of God.

- III. a. Epistemology { Certitude.
Criteria of Knowledge.
- b. Cosmology { Substance.
Origin and Evolution.
- IV. a. Rational Psychology { The Soul.
Substantiality.
Spirituality.
- b. History of Philosophy { Ancient.
Mediæval.
Modern.

MATHEMATICS

- I. College Algebra.
Plane Trigonometry.
- II. Plane and Solid Analytical Geometry.

SCIENCE

- I. Advanced General Chemistry.
- II. Qualitative Analysis.
- III. Quantitative Analysis.
- IV. Food Analysis.

PHYSICS

- I. General Physics.
- II. Advanced Course in Mechanics, Heat, Sound, Light,
Electricity, and Magnetism.

NORMAL DEPARTMENT

This department offers three courses, the normal art course, the normal music course, and the normal training course.

Applicants for any of these courses are required to present a diploma from a four-year high school, be at least seventeen years of age, and register at the beginning of the first semester.

NORMAL ART COURSE

This course is designed to prepare young women for positions as teachers of drawing in the public schools. The work covers two years.

First Year

Drawing (Object and Life)
Colored Crayons
Design
Stenciling and Block Printing
Modelling in Clay
Elementary Manual Training
Paper Folding
Construction Work
Weaving, etc.
Art History, etc.
Psychology

Second Year

Drawing (Object and Life)
Water Color
Design
Composition
Mechanical Drawing
Lettering
Embroidery and Crochet
Leather
History of Education
Pedagogy

Throughout the course, opportunity will be given for visiting drawing lessons in the grades.

Second year students will be given practice teaching in the grades.

Certificates are granted by the State Department of Public Instruction to the graduates of this department. These certificates permit the students to teach in the State of Minnesota.

NORMAL MUSIC COURSE

This course is designed to fit young women to become teachers of music in the public schools. The work outlined covers a period of two years.

First Year

Rote Songs
Ear Training
Sight Singing
The Child Voice
Accompanying
Harmony
Psychology
Observation of Class-room work

Second Year

Ear Training
Methods
Chorus Conducting
Library Reading
History of Music
Harmony
Analysis of Form
Practice Teaching

Certificates are granted by the State Department of Public Instruction to graduates of this department. These certificates permit the students to teach in the State of Minnesota.

NORMAL TRAINING COURSE

The purpose of the Normal Training Course, which extends over a period of one year, is to qualify students to fill positions as teachers.

First-grade Certificates are granted by the State Department of Public Instruction to Normal Training students who successfully complete the course. These certificates permit the students to teach in the rural and semi-graded schools of the State of Minnesota.



SEWING ROOM



CLASS ROOM

DEPARTMENT OF MUSIC

Practice Period—40 Minutes

The aim of this department is to provide the best facilities for pupils who wish to pursue any branch of music. The department offers regular courses of study, ranging from the elementary to the advanced grades. The courses are carefully arranged and the time required for their completion depends upon the ability and previous preparation of the students, and partly upon the number of daily practice periods devoted to the study.

COURSES OF MUSIC

The Preparatory Course.

The Academic Course.

The Teachers' Certificate Course.

The Graduating Course.

The Preparatory Course includes the first, second, third, and fourth grades.

The Academic Course includes the fifth, sixth, seventh, and eighth grades. Study of elementary harmony.

The Teachers' Certificate Course: Ninth and tenth grades. History of Music. Harmony. Analysis. Musical Literature.

Graduating Course: Analysis. Counterpoint. Musical Literature. Composition. Psychology.

Musicals and recitals are a part of the year's program.

REQUIREMENTS FOR TEACHERS' CERTIFICATE

Each pupil who is working for a Teachers' certificate, is required to finish the Teachers' Certificate Course, as outlined in our catalog; to present credits for two years' work in the high school department; to give one public recital.

REQUIREMENTS FOR GRADUATION

Each pupil who is working for a diploma is required to complete the graduating course, as outlined in our catalog; to present a diploma from a four-year high school; to give one public evening recital.

VOICE CULTURE

The course of instruction in singing is thorough and systematic. The method used is based upon the Italian School of Voice and German Methods, with their deep, elastic breath control, voice-placing, accent, phrasing and distinct enunciation.

NORMAL MUSIC COURSE

This course is designed to fit young women to become teachers of music in the public schools. The presentation of a diploma from a four-year high school is required for admission. The course covers a period of two years. For outline and further information, see "Normal Department," Page 19.

DEPARTMENT OF ART

This department offers two courses, the Normal Art Course, and the Academic Course.

NORMAL ART COURSE

This course is designed to prepare young women for positions as supervisors of drawing in the public schools. The presentation of a diploma from a four-year high school is required for admission. The work covers two years. For outline and further information, see "Normal Department," Page 19.

ACADEMIC COURSE

The work of this department covers a period of four years, and includes antique and life study, portraits, still life, illustration, china painting, decorative design, perspective, anatomy, and industrial art.

The Academic diploma must be accompanied by a high school diploma.

Special work may be taken by pupils not desiring a diploma. Talks on art subjects will be given from time to time.



ART STUDIO



LIBRARY

DEPARTMENT OF EXPRESSION

The aim of this department is to develop beauty, power, and flexibility of the speaking voice. Pupils will be trained in the reading of short stories, monologues, and the literary forms peculiar to to-day, as well as the best of classic literature, prose and poetry.

The regular work of this department is divided into two parts: a preparatory and an advanced course. The preparatory course covers a period of two years and is so arranged that it may be taken together with the regular high school course. The advanced course covers a period of two years, and is open to those who have finished High School English in addition to the elementary course of this department.

PHYSICAL CULTURE

Regularity and system are required in physical training, as in other work, and it ranks in dignity and importance beside any other work in the school. Pupils are taught to overcome habits leading to curved spine, drooping shoulders, narrow chests, etc. Special attention is given to proper sitting, standing, and walking. Connected with the gymnasium are dressing rooms and shower baths.

DOMESTIC SCIENCE DEPARTMENT

ELEMENTARY COURSE

The purpose of this department is to provide for the domestic side of a young woman's education. This department includes household arts, cooking, and sewing.

The principles of cookery, its chemistry, the use of and care of kitchen utensils, the manufacture and preservation of food materials are studied and pupils receive a theoretical, systematic, and practical training. Instruction is given by recitations and lectures, and work is done in a well-equipped kitchen, with individual utensils and cooking apparatus. Each pupil has actual experience in preparing, cooking, and serving of all foods. At stated intervals the pupils of this department prepare a dinner which they serve in the Domestic Science Dining Room.

The work is outlined for a three years' course. The subjects pursued are: English, Food Study, Physiology, Hygiene, Cooking, Serving, Dietetics, Laundry Work, Home Nursing and Emergencies. The work is so arranged that it can be taken together with the regular high school course.

The course in sewing includes hand and machine work, elements in dressmaking, mending, selection of materials, embroidery, etc. Oversight in sewing and mending is given without extra charge.

The requisites for graduation from this department are:

Previous or concurrent graduation from a four-year high school course;

Two year-credits in domestic science;

Two year-credits in sewing.

The first year-credit in domestic science and the first year-credit in sewing will be accepted toward graduation from our academic department.

Pupils presenting a diploma from a four-year high school, upon entering this department, may complete the course in two years.



ACADEMIC DEPARTMENT

The Academic or High School Department offers two courses of study, each covering a period of four years. The requisites for graduation are fifteen year-credits, or fifteen State certificates in high school subjects. Pupils are required to present certificates from the various schools or submit to entrance examination.

Certificates from recognized schools will be accepted when the latest one has been obtained within two years of its presentation.

Pupils in the Academic Department are required to study English. Those desiring to take up a branch which is not in the course they have selected are permitted to do so, provided the subject taken for the one omitted does not interfere with the course followed.

A special course may be selected by students who wish to give considerable time to Music or Art; their studies are arranged with a view to their needs, and credits obtained count toward graduation.

The Academy is accredited to the State Universities of Minnesota, North Dakota, South Dakota, Iowa, The Catholic University of America, Washington, D. C., and any College affiliated with The Catholic University of America, Washington, D. C.

CLASSICAL COURSE

The Recitation Period—40 Minutes

FIRST YEAR

<i>First Semester</i>	<i>Second Semester</i>
English I	English I
Latin Grammar	Latin Grammar
Algebra I	Algebra I
American History	Civics

SECOND YEAR

English II	English II
Caesar	Caesar
Ancient History	Ancient History
Plane Geometry	Plane Geometry

THIRD YEAR

English III	English III
Cicero	Cicero
Mediæval History	Modern History
Physics	Physics

FOURTH YEAR

English IV	English IV
Virgil	Virgil
Physiography	Higher Algebra
Chemistry	Chemistry

Electives: Solid Geometry, Geology, Botany

SCIENTIFIC COURSE

The Recitation Period—40 Minutes

FIRST YEAR

First Semester

English I
German or French
Algebra I
Physiology

Second Semester

English I
German or French
Algebra I
Botany

SECOND YEAR

English II
German or French
Ancient History
Plane Geometry

English II
German or French
Ancient History
Plane Geometry

THIRD YEAR

English III
German or French
Mediæval History
Physics

English III
German or French
Modern History
Physics

FOURTH YEAR

English IV
German or French
Physiography
Chemistry

English IV
German or French
Higher Algebra
Chemistry

Electives: Solid Geometry, Geology, Civics

COMMERCIAL DEPARTMENT

This department offers young women an opportunity of acquiring a thorough business knowledge, and prepares them for securing positions that will enable them to be self-supporting.

BOOKKEEPING COURSE

With moderate ability and diligent application, the work outlined in this course should be completed within one year. Pupils admitted to this course must have completed the eighth grade. The subjects pursued are:

Commercial Arithmetic	Commercial Law
Commercial Spelling	English
Commercial Correspondence	Bookkeeping
Commercial Geography	Penmanship

SHORTHAND AND TYPEWRITING COURSE

The pupils desiring to take this course must have completed the bookkeeping course or have at least one year's work in the high school department. The subjects pursued are:

Stenography	Rhetoric
Typewriting	Spelling

A certificate is given to students completing this course.



ONE OF THE DINING ROOMS



ONE OF THE DINING ROOMS

PREPARATORY DEPARTMENT

This department includes the fifth, sixth, seventh, and eighth grades.

A simple course in American Literature is given in order to foster a love of good books; the lives of the most important writers are read carefully, selections from their writings are read and some of the finest committed to memory.

THE CURRICULUM

The pupils of the preparatory department are carefully instructed in:

Christian Doctrine	Elements of Physiology and Hygiene
Sacred History	United States History
Arithmetic	Reading
Grammar	Writing
Geography	Spelling

In addition to these studies, instruction is given in singing, physical culture, and drawing.

PRIMARY DEPARTMENT

This department consists of the first, second, third, and fourth grades.

The ability to perform simple work in addition, subtraction, multiplication, and division, easy fractions, to read readily, to spell common words, to write legibly from dictations, and some knowledge of Geography, is required for promotion.

In addition to these studies, instruction is given in singing, physical culture, and drawing.

CLASS OF 1915

ACADEMIC DEPARTMENT

Janet Cochrane Atkins
Anna Gertrude Braun
Rose Catherine Bruener
Grace Estherbrook Clement
Anna Catherine Coughlin
Myrn Kathleen Devine
Muriel Anne Felker
Albina Florence Franta
May Elizabeth Knupp
Julia Hortense Kraker .
Denver Catherine McCloskey
Genevieve Marie Noonan Teresa Ledvina McDonnell
Stella Julia Nordick
Patricia Bernedette Reddin
Mary Josephine Schmitt
Genevieve Cecil Simmer
Florence Josephine Stangl
Leonette Joan Stans
Loretta Margaret Tracy
Frances Anna Vetter
Fern Ethel Way
Catharine Marie Weibeler
Catherine Josephine Wenner

MUSIC DEPARTMENT

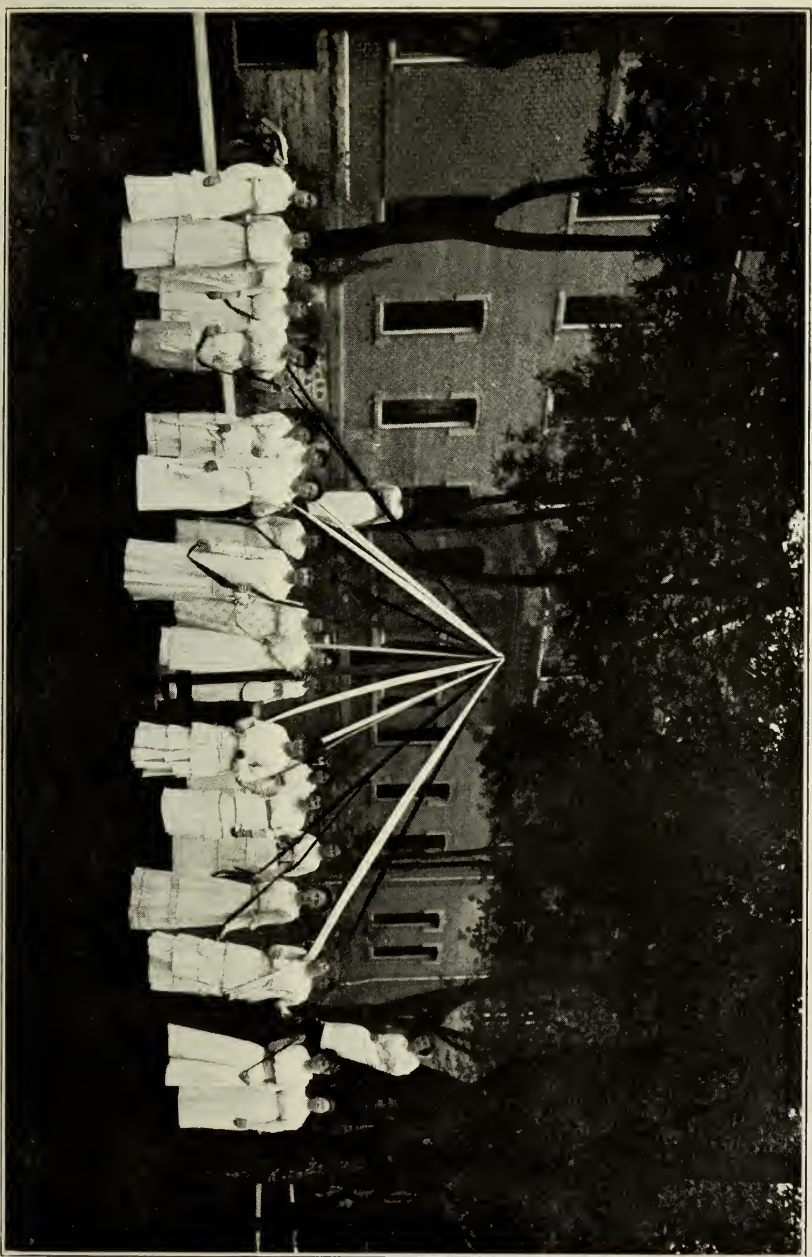
Diploma: May Elizabeth Knupp
 Marjorie Redmond
Certificate: Esther Marie Grinnell

DOMESTIC SCIENCE DEPARTMENT

Anna Gertrude Braun
Frances Anna Vetter
Catharine Marie Weibeler

STENOGRAPHIC DEPARTMENT

Albina Florence Franta
Mary Catherine Malley
Lillian Cecilia Simons



MAY-POLE DANCE—CLASS OF 1915

“JUDITH OF BETHULIA”

A Biblical Drama in Four Acts.

November 22, 1914.

CAST OF CHARACTERS.

Judith, a rich widow of Bethulia	- - -	Catherine Nangle
Holofernes, Chief-Captain of the Assyrians	- -	Esther Muller
Ozias	} Patriarchs of the Beleagured City of Bethulia	} Genevieve Shaefer Margaret Grant Margaret Wollmering
Charmis		
Chabris		
Salome	} Noble Ladies of Bethulia	} Janet Atkins Julia Kraker
Rachel		
Bagoas, Captive and Slave to Holofernes	- -	Elizabeth Hickey
Marah, Handmaid and Companion to Judith		Edwina Borgerding
Abner	} Captains of Holofernes' Army	} Esther Leary Catherine Wenner Theresa McDonell Theresa Utecht
Hada		
Elika		
Lamech		
Atha, an archer	- - - - -	Muriel Felker
Arab Dancing Girl	- - - - -	Janet Atkins
Angels, Attendants, Musicians, and People of Bethulia.		

ACT I. Scene: A Street in Bethulia.

ACT II. Scene I, The Tent of Holofernes.

Scene II, A Secluded Wood near the Tent of Holofernes.

ACT III. Scene: The Tent of Holofernes.

ACT IV. Scene: A Garden in Bethulia.

Music furnished by the pupils of St. Cecilia's Conservatory

GRADUATION RECITAL

By MAY ELIZABETH KNUPP.

June 7, 1915.

PROGRAM.

- Duo—Concerto in G Minor, Op. 25 *Mendelssohn*
Second Piano, IRENE WENNER
- Rhapsody Op. 27 *Brahms*
- Phrehiera Op. 36 *Strakosch*
- Boquet De Melodies Russes, Op. 56 *Kullak*
- Reading—"The Soul of the Violin" *Merrill*
JANET ATKINS
- Venezia E Napoli *Liszt*
- Sonata Op. 27 *Beethoven*
- Etude De Concert Op. 36 *MacDowell*
- Duo—"Polka De La Reine" *Raff*
Second Piano, IRENE WENNER
-

LAWN FETE.

June 5, 1915.

PROGRAM.

"Come and trip it as we go,
On the light fantastic toe."

- "The Dainty Shepherdess" Collegiates
- "Maid of the Mist" Janet Atkins
- "In the Starlight" Collegiates and Senior Academics
- "May-Pole Dance"—Braiding of the Cherry and the Cream
Senior Academics

Followed by

Alma Mater Luncheon in honor of Senior Academics



RESTING

CLASS DAY EXERCISES

June 8, 1915.

PROCESSIONAL

SALUTATORY..... Julia Kraker

PIANO DUET—"Polonaise" *Chopin*

DENVER McCLOSKEY, CATHERINE WEIBELER

CLASS POEM..... Fern Way

CLASS PROPHECY..... Rose Bruener

VIOLIN SOLO—"Adoration"..... *Felix Borowski*

FERN WAY

Piano, MAY KNUPP

ORATION—"Responsibilities of a Student"..... Janet Atkins

CLASS WILL..... Muriel Felker

PIANO DUET *Selection*

CATHERINE WENNER, GENEVIEVE SIMMER

VALEDICTORY..... Anna Braun

CLASS SONG..... Words by May Knupp

Music by Catherine Wenner

RECESSIONAL

Pianist, Esther Grinnell

COMMENCEMENT PROGRAM

Wednesday Afternoon, June Ninth, at 2:30 o'Clock.

"THE DAUGHTER OF PILATE."

A Roman Drama in four acts.

PROGRAM.

ACT I.

Scene: Pontia's reception room with balcony overlooking Jerusalem
"Even if Caiphas declares Him guilty, I will induce my father never to pronounce the sentence upon Him."

ACT II.

Scene I. Same as in Act. I.
"Let not the sin of the father descend upon the child."

Scene II. The same.
"Every doubt is dispelled. I believe."

ACT III.

Scene: The Imperial garden in Rome, near the royal palace.
"For this very night I fear to be thrown into prison for refusing to marry Agrippina's hateful son, and I am suspected a Christian."

ACT IV.

Scene: Prison in the Palatine Palace.
"Thus dies Pontia, the first Christian maiden in Rome!"

Address—

Presentation of Gold Medals and Diplomas

By

The RIGHT REVEREND JOSEPH F. BUSCH, D. D.

CHARACTERS.

Pontia, Pilate's Daughter	Katherine Nangle
Corina, smaller sister of Pontia	Isabelle Peters
Claudia Proclea, mother of Pontia	Fern Way
Agrippina, Empress of Rome	Janet Atkins
Miranda } Smaller Children of Empress Agrippina {	Loretta Golla
Octavia } {	Loretta Watters
Octavia, Noble Roman Lady	Julia Kraker
Cornelia, Roman Augur's Wife	Genevieve Shaefer
Roxana, Singer	Esther Muller
Petronilla, Jewish Maiden	Muriel Felker
Tullia, Daughter of Jairus	Margaret Grant
Salome, Daughter of Herodias	Marie G. Peters
Ruth } Jewish Girls {	Elizabeth Hickey
Miriam } {	Janet Atkins
Orpah } {	Martha Borgerding
Herald	Catherine Weibeler
Ethelinda, British Slave	Rose Bruener
Flamentina, a Vestal	Edwina Borgerding
Pamphilius, a Keeper of Palentine Prison	Margaret Wollmering
Roman Matrons, Vestal Virgins, Angels, Slaves, etc.	

PROGRAM MUSIC

Duo—Rhapsodie Hongroise No. 12 *Liszt*
 First Piano, ESTHER MULLER,
 Second Piano, CATHERINE WENNER.

ACT I.
 ACT II.

Duo—"Concerto in G Minor" *Mendelssohn*
 First Piano, MAY KNUPP
 Second Piano, IRENE WENNER

ACT III.

Bandittenstreiche Overture *Suppe*
 First Piano, CATHERINE WENNER, BERNICE BLANCHETT
 Second Piano, ESTHER MULLER, DENVER McCLOSKEY

ACT IV.

Piano Solo—"Callirhoe" *Chaminade*
 MATHILDA HOFFMAN

MISCELLANEOUS ENTERTAINMENTS, LECTURES AND RECITALS

- Sept. 6 Autumn Corn Roast.
- Sept. 13 Musicale, Harp and Vocal, Mrs. Wade and Miss Gilbert.
- Sept. 20 Program. Music and Elocution Classes.
- Sept. 25 Trip to St. John's University.
- Sept. 27 Debate: "Resolved, That great ambitions have done more harm than good."
"The Vision of Fair Women." Collegiates and Graduates.
- Oct. 4 Gymnasium Exhibition. Drills and Folk Dances.
- Oct. 11 Recital. Music and Elocution Classes.
- Oct. 18 An evening in the woods. Marshmallow Roast, Sub-graduates.
Literary Charades and Games, Graduates.
- Oct. 25 Pantomime, "Chaucer's Sleeping Boy Minstrels." Farce: "The Truth About Jane," Collegiate Department.
- Nov. 1 "Ye Olde Tyme Dinner." Guests of Honor: the Collegiate and Academic Departments. Hostesses: the Sub-graduates.
- Nov. 8 Program. Music and Elocution Classes.
- Nov. 15 Roman Drama: "Judith of Bethulia."
- Nov. 22 St. Cecilia's Day. Festival Greetings.
- Nov. 29 Recital. Music and Elocution Classes.
- Dec. 7 Stereopticon views and lecture on Armenia and Turkey, Reverend Ph. Salmone.
- Dec. 6 Reading and Singing. Elocution and Vocal Classes.
- Dec. 8 Vocal and Instrumental Music Program.
- Dec. 13 "The King's Daughters." Complimentary program for Venerable Sister Directress.



BASKET BALL TEAM—SENIOR ACADEMICS

- Jan. 11 "Judith of Bethulia," presented at the new Cathedral Auditorium, St. Cloud.
- Jan. 16 "Merchant of Venice," Francis O'Donnell.
- Jan. 17 Miscellaneous Selections, Francis O'Donnell.
- Jan. 24 Recital, Elocution Pupils.
- Feb. 7 Basket-ball Game, Collegiates vs. Graduates.
- Feb. 14 Musical Recital, Piano and Vocal, Monsieur and Madame Vontom.
- Feb. 16 Promenade, Collegiates and Academics.
- Feb. 21 Musical Recital, Pupils of St. Cecilia's Conservatory.
- Feb. 28 Recital, Elocution Pupils.
- Mar. 7 Debate, "Resolved, That woman should have equal suffrage with man," Collegiates and Graduates.
- Mar. 14 Sacred Concert, Pupils of St. Cecilia's Conservatory.
- Mar. 17 Graduation Recital, Marjorie Redmond.
- Mar. 17 Visit of The Most Reverend Archbishop John Ireland and The Right Reverend Bishop James Trobec.
- Mar. 21 Recital, Elocution Class.
- Mar. 30 Program complimentary to our Bishop, The Right Reverend Joseph F. Busch, D. D.
- May 13 Festal Luncheon, Sub-graduates.
- May 16 "Little Folks' Party." Guests of Honor: the Sub-graduates. Hostesses: The Academics.
- May 30 Piano Recital, Esther Grinnell.
- June 5 Lawn Fete and Alma Mater Luncheon.
- June 6 Baccalaureate Sermon, Reverend Alcuin Deutsch, O. S. B.
- June 7 Graduation Recital, May Knupp.
- June 8 Class Day Exercises.
- June 9 Commencement Exercises.

NAMES OF STUDENTS

Albrecht, Carol	Minnesota
Alzheimer, Elizabeth	Minnesota
Aschenbrenner, Gladys	Minnesota
Ascher, Helen	Minnesota
Astlin, Mary	Washington, D. C.
Atkins, Janet	Minnesota
Barr, Frances	Minnesota
Barrett, Olive	Minnesota
Bauer, Viola	South Dakota
Bement, Ethel	Minnesota
Bergman, Catherine	Minnesota
Berning, Adelbert	Minnesota
Biebl, Marie	Minnesota
Blanchett, Bernice	Minnesota
Borgerding, Edwina	Minnesota
Borgerding, Martha	Minnesota
Botz, Philomine	Minnesota
Braegelmann, Helen	Minnesota
Braun, Albertha	Minnesota
Braun, Anna	North Dakota
Bretz, Adeline	Minnesota
Bretz, Angeline	Minnesota
Bretz, Genevieve	Minnesota
Brown, Marion	Minnesota
Bruener, Rose	Minnesota
Burfield, Regina	Minnesota
Buttweiler, Alma	Minnesota
Carl, Clara	Minnesota
Christian, Helen	Minnesota
Christian, Ruth	Minnesota
Clement, Blanche	Minnesota
Clement, Grace	Minnesota

Coughlin, Catherine	South Dakota
Coy, Marguerite	Iowa
Crever, Clara	Minnesota
Cummings, Izola	Minnesota
Cushing, Ethel	Wisconsin
Czech, Marie	Minnesota
Davenport, Imogene	Minnesota
DePlazes, Dorothy	North Dakota
DePlazes, Rose	North Dakota
Devine, Myrn	Minnesota
Diedrich, Mildred	Minnesota
Diekmann, Julia	Minnesota
Dimond, Sara	Minnesota
Dobmeyer, Mary	Minnesota
Doffing, Marguerite	Minnesota
Dougherty, Mary	Wisconsin
Drenckhahn, Vivian	Minnesota
Eckert, Catherine	Minnesota
Empson, Florence	Minnesota
Ess, Marie	Minnesota
Fandel, Hortense	Minnesota
Farley, Helen	Minnesota
Feiden, Hildegard	Minnesota
Felker, Muriel	South Dakota
Feneis, Anna	Minnesota
Feneis, Elizabeth	Minnesota
Fitzgerald, Margaret	Wisconsin
Flynn, Anne	Minnesota
Foster, Helen	Minnesota
Fowler, Aileen	Minnesota
Franta, Albina	Minnesota
Friedman, Rufina	Minnesota
Gable, Mary	Minnesota
Galvin, Mae	Minnesota
Gelting, Agnes	Minnesota

Gergen, Florence	North Dakota
Gertken, Agatha	Minnesota
Gertken, Cecilia	Minnesota
Getter, Isabelle	Minnesota
Girgen, Margaret	Minnesota
Goduto, Anna	Minnesota
Golla, Loretta	Minnesota
Grant, Margaret	Minnesota
Green, Rose	Wisconsin
Grinnell, Esther	Minnesota
Grinnell, Sophia	Minnesota
Groetsch, Elizabeth	Minnesota
Gully, Annie	Minnesota
Hannen, Gertrude	Minnesota
Hannon, Cecilia	Minnesota
Hardmann, Esther	Minnesota
Harren, Anna	Minnesota
Heintz, Theresa	Minnesota
Hendricks, Grace	Minnesota
Henlein, Anna	North Dakota
Hens, Otilia	Minnesota
Herbers, Veronica	Minnesota
Hickey, Elizabeth	Iowa
Hilbert, Irene	Minnesota
Hilbert, Marguerite	Minnesota
Hilger, Elizabeth	Minnesota
Hoeschen, Lucille	Saskatoon, Canada
Hoeschen, Ruth	Saskatoon, Canada
Hoffmann, Mathilda	Iowa
Horan, Hildegard	Minnesota
Hulwi, Sophia	Wisconsin
Jacoby, Gertrude	Minnesota
Jourdan, Josephine	Minnesota
Jung, Agnes	Minnesota
Justen, Frances	Minnesota



STUDENT'S ROOM



GYMNASIUM

Kahl, Agnes	Minnesota
Kappahn, Lena	Minnesota
Kapsner, Agnes	Minnesota
Kavanagh, Jane	Minnesota
Kavanagh, Margaret	Minnesota
Kavanagh, Mary	Minnesota
Keating, Loretta	Wisconsin
Kessler, Hildegard	Minnesota
Kiess, Josephine	Minnesota
Klein, Louise	Minnesota
Klasen, Frances	Minnesota
Knupp, May	South Dakota
Kockler, Pauline	Minnesota
Kotschevar, Anna	Minnesota
Kraker, Julia	Minnesota
Kraker, Lidwina	Minnesota
Kroll, Mary	Minnesota
Kruse, Rita	Minnesota
LaFramboise, Alma	South Dakota
Landwehr, Eleonore	Minnesota
Lauermann, Hildegard	Minnesota
Leary, Esther	Minnesota
Lord, Ellen	Minnesota
Loso, Imelda	Minnesota
Lynch, Clara	Minnesota
Lynch, Grace	Minnesota
McCann, Anna	Minnesota
McCloskey, Denver	South Dakota
McDonald, Helen L.	Minnesota
McDonell, Theresa	North Dakota
McIntyre, Grace	Minnesota
McGoey, Myrtle	Minnesota
McMahon, Ruth	North Dakota
Macke, Dorothy	Minnesota
Malley, Mary	Minnesota

Maloney, Celestia	North Dakota
Maloney, Mary	South Dakota
Mariani, Mary	Minnesota
Maron, Marie	Minnesota
Martini, Caroline	Minnesota
Mertes, Clara	Minnesota
Meyer, Anna	Minnesota
Meyer, Helen	Minnesota
Miller, Blanche	Minnesota
Misho, Cecilia	Minnesota
Mondloch, Mary	Minnesota
Morgan, Hazel	Minnesota
Muggli, Zitta	Minnesota
Muller, Esther	Minnesota
Muyres, Anna	Minnesota
Nangle, Katherine	Minnesota
Nickols, Anna	Minnesota
Noonan, Edna	Minnesota
Noonan, Florence	Minnesota
Noonan, Genevieve	South Dakota
Nordick, Stella	Minnesota
Novak, Louise	Minnesota
O'Donnell, Genevieve	Minnesota
O'Donnell, Marie	Minnesota
Opitz, Eleanora	South Dakota
Oster, Irene	Minnesota
Pancratz, Gertrude	Minnesota
Peck, Mathilda	Minnesota
Peters, Frances A.	Minnesota
Peters, Isabelle	Minnesota
Peters, Marie G.	Minnesota
Peters, Marie	Minnesota
Peyton, Catherine	Minnesota
Peyton, Inez	Minnesota
Peyton, Irene	Minnesota

Pinault, Dorothy	Minnesota
Rambur, Katherine	North Dakota
Rambur, Rose	North Dakota
Reddin, Patricia	Wisconsin
Redmond, Marjorie	Montana
Reis, Mary	Minnesota
Rennie, Mary	Minnesota
Rennie, Theresa	Minnesota
Ringwelski, Rose	Minnesota
Roeder, Aurelia	Minnesota
Rohrenbach, Frances	Minnesota
Ronayne, Letitia	South Dakota
Ronayne, Patricia	South Dakota
Ryan, Barbara	Minnesota
Ryan, Leonora	Minnesota
Schmidt, Hildegard	Minnesota
Schmitt, Mary	Minnesota
Schmieg, Helen	Minnesota
Schoemer, Anna	Minnesota
Schoemer, Helen	Minnesota
Schroeder, Eleanora	Minnesota
Schroeder, Rose M.	Minnesota
Schroeder, Rose	Minnesota
Schweich, Anna	Minnesota
Seivert, Leona	South Dakota
Selden, Kathryn	Minnesota
Shaefer, Genevieve	Minnesota
Simmer, Genevieve	Minnesota
Simonet, Loretta	Minnesota
Simons, Lillian	Minnesota
Skinner, Blanche	Minnesota
Smith, Ruth	Minnesota
Snyder, Flournoy	Minnesota
Stangl, Florence	Wisconsin
Stans, Leonette	Minnesota

Stauduhar, Mary	Illinois
Steckler, Frances	North Dakota
Steckler, Rose	North Dakota
Strand, Mary	Minnesota
Sweeney, Mary	Minnesota
Swenson, Lauretta	Minnesota
Tavis, Mary	North Dakota
Tew, Catherine	Minnesota
Tew, Mary	Minnesota
Thornton, Hazel	Minnesota
Thornton, Marion	Minnesota
Thulen, Agnes	Minnesota
Tracy, Loretta	Iowa
Uptegrove, Ione	Minnesota
Uptegrove, Irene	Minnesota
Utecht, Teresa	Minnesota
Vetter, Frances	South Dakota
Viktor, Emma	Iowa
Vogel, Florence	Minnesota
Vye, Marion	Minnesota
Waldron, Lyndall	Minnesota
Waletich, Emma	South Dakota
Walsh, Alice	New Mexico
Walsh, Drusilla	New Mexico
Walsh, Gladys	New Mexico
Walz, Evalyn	Minnesota
Walz, Katherine	Minnesota
Walz, Rose	Minnesota
Watters, Clara	Minnesota
Watters, Loretta	Minnesota
Way, Fern	North Dakota
Weber, Mary	Minnesota
Weibeler, Catharine	Minnesota
Weibeler, Helen	Minnesota
Welle, Augusta	Minnesota



Weyrens, Elfrieda	Minnesota
Wenner, Catherine	Minnesota
Wenner, Irene	Minnesota
Williams, Jeanette	Minnesota
Wissing, Stella	Minnesota
Wohnick, Albina	Minnesota
Wolf, Margaret	North Dakota
Wolkerstorfer, Anne	Minnesota
Wolking, Magdalene	Minnesota
Wollmering, Margaret	Minnesota
Yanz, Magdalen	Minnesota
Zitzelsberger, Theresa	North Dakota

REGULATIONS FOR WARDROBE

No uniform is required. For school wear, dress of any color, material to suit the season. A better dress for Sundays. An inexpensive white dress for special occasions. Dresses must not be low in the neck; sleeves must reach to the wrists or lace sleevelets may be worn with short sleeves.

Shoes must have rubber heels. Every pupil must be provided with a head wrap and sweater-jacket of any color; also a suit for gymnasium, consisting of a white middy blouse, full bloomers of navy blue material, and black tennis slippers.

Each pupil should be supplied with a long-sleeved apron, to be worn in the dormitory or private room, while arranging alcove in dormitory, or room. Children under twelve years of age should be supplied with four long-sleeved aprons.

Each pupil should be furnished with two veils (to be procured at the College), towels, all other toilet necessaries, etc.; sufficient supply of plainly made underclothes, three changes of heavy underwear for the winter season, kimona, and all facilities for mending and sewing, as needles, thimbles, thread, scissors, cotton for darning; one pair of rubbers; carpet rug for bedside; one double woolen blanket.

Table Service: Glass, four napkins, a napkin-ring, a silver knife, fork, teaspoon, and soup-spoon. The napkin-ring and silver should have the initials of pupil engraved on it.

Each article of clothing is marked with a number procured at the College.

The Institution will not hold itself responsible for the loss of jewelry brought by the pupils.

TERMS FOR THE SCHOLASTIC YEAR OF FORTY WEEKS

September 1 to June 7.

PAYABLE IN ADVANCE

Board and tuition, including bed and alcove in dormitory, payable by all	\$172.00
Rooms, according to size and location, \$60, and	100.00
Rooms with private bath	120.00
Piano, organ, stringed instruments, two lessons a week	50.00
For each additional practice period	10.00
Pipe organ, two lessons a week	100.00
For each additional practice period	20.00
Voice training, two lessons a week	50.00
Thoroughbass and harmony, private lessons, each	1.00
Art needlework, private lessons, each50
Painting in oil, water colors, each, two lessons a week	40.00
Drawing, two lessons a week	30.00
Painting on china, two lessons a week	40.00
Elocution, two lessons a week	40.00
Typewriting	20.00
Laboratory charges (physics and chemistry)	8.00
Lessons in cooking, including material	30.00
Graduation fee, Collegiate and Academic Departments	10.00
Certificate fee, Academic Department	2.00
Two veils (black veil, 40c; white veil, 60c)	1.00
Board and lodging for visitors, per day	1.00

Dresses and white petticoats must be laundered at an additional expense of pupil, with the exception of the dresses and aprons for children under twelve years of age.

The scholastic year of forty weeks is divided into two equal semesters of twenty weeks each; the first begins on the first of September, and the second on the nineteenth of January.

Terms for board, tuition, and room are payable in advance—September 1st, January 4th, and April 26th.

Pupils will be received at any time and charged from the date of admission to the end of the term. No deduction is made for partial absence.

A deposit of Five Dollars is required in order to secure a room. This deposit is forfeited in case the applicant withdraws; otherwise it is credited on the first payment.

Should a pupil leave the institution the balance of the amount paid in advance on board, tuition and room, will be refunded.

Each pupil must provide her own guitar, mandolin, banjo, and violin. Tuition in music, art, and elocution includes one period daily practice. Pupils are required to take two lessons per week, each lesson lasting forty minutes.

On entrance, a deposit should be made to cover the immediate expenses.

Stationery and notions, as well as all extras to be served in the dining room, must be paid for in cash.

Remittances should be made by draft, check, postoffice money order or express order, payable to St. Benedict's College.

A deduction of ten per cent is made on board and tuition for more than one pupil from the same family.

No money or other articles will be furnished to any student by the Directress unless an equivalent sum has been placed in the office.

Business matters of all kinds connected with the school must be transacted at the office.

All unnecessary damage to furniture, books, and defacing of the building will be charged to the student.

Express charges on packages should invariably be paid.

No pupil will be graduated who owes a debt to the institution.

A social as well as a business reference is required from strangers making application for the entrance of pupils.

All communications of inquiry, advice and business should not be made through the pupils, but directly to the

SISTER DIRECTRESS,

St. Benedict's College and Academy,
St. Joseph, Stearns County, Minnesota.

St. Benedict's College and Academy

ST. JOSEPH, MINN.

Application for Admission

To be filled out and returned to Sister Directress

Date.....191.....

Full Name and Address of Applicant.....

.....

Age

School Last Attended.....

Grade or Course Pursued

Course of Study Desired

Extras to be Taken

Church Connection

Source of Information Concerning St. Benedict's.....

.....

Financial References

Social References

Full Name and Address of Parents or Guardian.....

.....

Business.....

A list of credits and a letter of honorable dismissal from school last attended are to be presented on date of registration. It is understood that the applicant agrees to the Regulations of the Catalogue.

UNIVERSITY OF ILLINOIS-URBANA



3 0112 110850390