

Historic, Archive Document

Do not assume content reflects current scientific knowledge, policies, or practices.

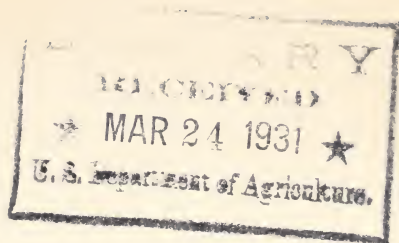
BEAUTY *from* BULBS

SUPPLEMENT

John Scheepers, Inc.

522 Fifth Avenue
New York City

62.61



SUPPLEMENT TO
BEAUTY *from* BULBS

NEW EDITION OF THE LEADING VARIETIES OF BULBS SUITABLE FOR OUTDOOR AND INDOOR CULTURE AND OF PROVEN MERIT FOR AMERICAN GARDENS, TO BE USED IN CONNECTION WITH OUR BOOK ENTITLED "BEAUTY FROM BULBS"



"And I doe wish all Gentlemen and Gentlewomen, whom it may concerne, to bee as careful whom they trust with the planting and re-planting of these fine flowers, as they would be with so many jewels."

—PARKINSON. PARADISUS, 1629.



PUBLISHED BY

JOHN SCHEEPERS, INC.

522 Fifth Avenue, New York City
(Guaranty Trust Company, corner 44th Street)

DISPLAY AND EXPERIMENTAL GARDENS IN
BROOKVILLE, LONG ISLAND, N. Y.

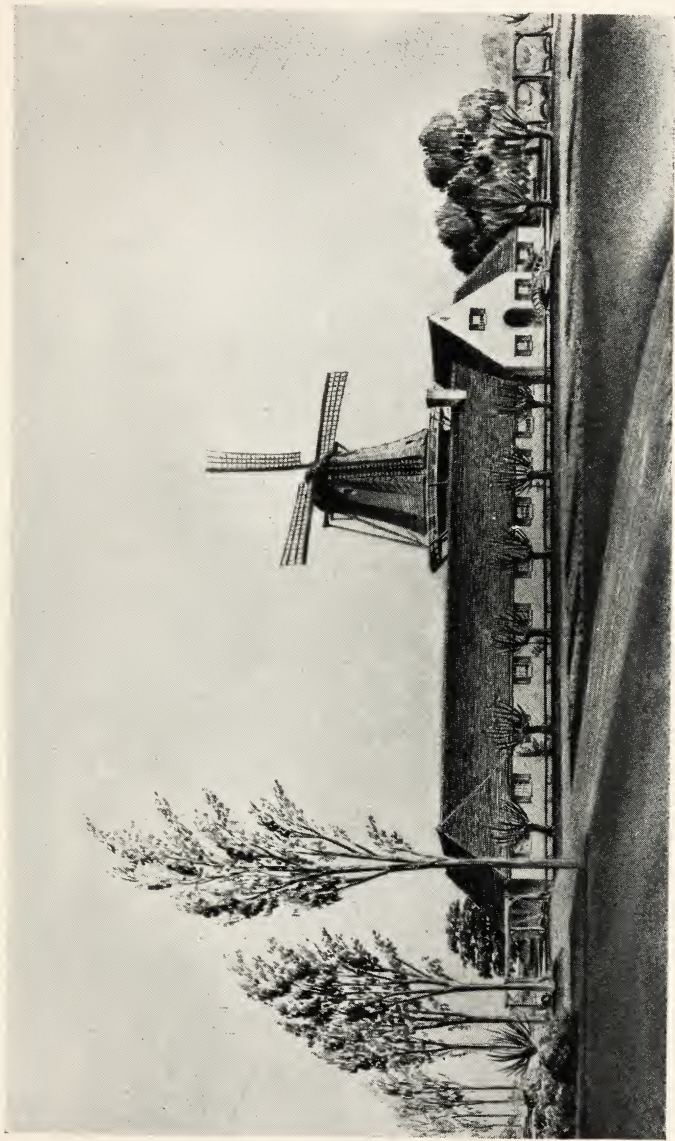
COPYRIGHT 1931

WE PRESENT in the conservative lists of Gladioli, Dahlias, Lilies, Montbretias, etc., given in this book, only the very choicest varieties, selected with utmost care during flowering time.

Though these lists may be short, they represent the best in the Gladiolus, Dahlia, Lily and Montbretia world.

In this belief we submit them to the most discriminating gardeners.

*“Now let the Gard’ner mark with care
The kind of stocks and what these stocks will bear.”*



Architect's Sketch of our New Administration Building at the Display Gardens, Brookville, Long Island.

The Gladiolus

*"All that Nature did omit
Art, playing Nature's second part, supplied."*

—SPENCER.

NO flowers are more valuable in the mid-summer and autumn gardens than the Gladioli; their uses are unlimited. The great range of their colors enables them to bear a part in any scheme of color, and by careful selection of proper varieties and proper timing of planting they may be brought into bloom at any time from June to November in the garden and from November to June they may be had in bloom under glass.

Gladioli will give satisfactory results in any good garden soil. The depth of planting for the corms differs with the character of the soil. The lighter the soil the deeper the corms should be set, and in dry seasons this deep planting is of great advantage, as it insures a cool and more or less moist environment for the roots. Deep planting has the further advantage of very largely doing away with the necessity of staking. In heavy, moist soils, however, there is danger in too deep planting, as the soil may become too wet and cause the young shoots and even the corms (bulbs) to rot.

The general method is to plant in rows from $1\frac{1}{2}$ feet to 4 feet apart, depending upon the method of cultivation to be employed. Dig a trench 5 inches deep and 2 inches wide at the bottom. Place the corms (bulbs) on the bottom of the trench 3 inches to 5 inches apart and then fill the trench with soil.

They like plenty of air and sunshine under which conditions they will grow to perfection. In dry seasons they should be thoroughly watered; a little sprinkling

in the evening is of only slight benefit; give them a thorough soaking so that the soil is wet 5 inches deep and then leave them alone for a week.

Cultivate after every rain or watering; keep the surface of the soil loose and open; give the nitrogen a chance to get into the soil where things are growing.

Do not plant Gladioli in the same patch many years in succession. New ground each year is best. Do not use horse manure as fertilizer. Ground fertilized with old cow manure the previous year is best.

Unpack the bulbs as soon as received and give them a thorough airing; keep in a good dry cellar until ready to plant.



*Among the meadows of the countryside,
From city noise and tumult far away,
Where clover-blossoms spread their fragrance wide
And birds are warbling all the sunny day,
There is a spot which lovingly I prize,
For there a fair and sweet old-fashioned country garden lies.*

—J. R. HAYES

Our New Gladiolus Introductions

IT is again our pleasure to offer this season one new variety of Gladioli. This variety has been greatly admired by everyone who has seen it. It has gone through last summer's most trying conditions with flying colors and has withstood the severest tests. We can recommend it to the most critical gardeners.

MRS. JOHN W. DAVIS (*Midseason*). A very rare shade of light orange-yellow. A very fine, distinct Gladiolus of outstanding beauty. Five to seven flowers open at one time; slightly ruffled. Strong and graceful grower. Each, \$5; \$45 for 10.

GLADIOLI Art Shades

AUTUMN FASCINATION (*Herbst-Zauber*) (*Late*). Beautiful warm salmon-copper color. The artistically colored flowers are very large and of exquisite form. Several blooms open at one time on tall, straight stem. One of the latest to flower. \$3.25 for 10; \$30 per 100.

DESDEMONE (*Late*). Immense flowers of ashy rose, striped violet, large dark red blotch edged with ivory-white. Scarce. \$4.25 for 10; \$40 per 100.

EMILE AUBRUN (*Midseason*). An unusual variety from Australia of most distinct and striking color, being an indescribable blending of salmon, orange and bronze, with slaty overtone. Center blotched cherry-red. Good sturdy spike and flowers large and well placed. Fascinating. \$2.75 for 10; \$25 per 100.

JOHN T. PIRIE (*Midseason*). An exceptionally colored variety and very beautiful. A mahogany-brown sort of shade with remarkable yellow-bordered, dark mahogany-brown throat. In a class by itself and should be in every worth while collection. \$1.50 for 10; \$12.50 per 100.

MARMORA (*Midseason*). A sensational exhibition variety. Its color is a lavender-gray with a Petunia-colored blotch in the throat. The flower is of immense size with many blooms open at one time, one of the most beautiful. \$7.25 for 10; \$70 per 100.

MOTHER MACHREE (*Midseason*). This is without question one of the most outstanding varieties. It has the softest and most luminous smoky colorings and it seems to reflect the shades of sunset. Perfect in form of flower, growth, arrangement and length of spike. Winner of the greatest honors at the various Gladiolus Shows. Each, \$4; \$37.50 for 10.

PRINCE OF INDIA (*Midseason*). Color varies from light to deep smoky gray, many of the petals being zoned and banded and freely penciled with dark slaty blue, mottled with white. A most remarkable mixture of colors and one of great beauty. Scarce. \$4 for 10; \$37.50 per 100.

SARABAND (*Midseason*). Very large, wide open flower of rich velvety bordeaux with straw-yellow blotch, feathered bordeaux. A fine new variety of very unusual color which is in great demand. \$2.25 for 10; \$20 per 100.

Blue and Lavender Shades

AIDA (*Early*). A most striking Gladiolus of finest dark blue. This variety can be depended upon as a clean and very vigorous grower. Truly an exhibition variety and the best in this color group. \$7.75 for 10; \$75 per 100.

AVE MARIA. A perfectly formed flower. The color is of a most exquisite shade of light blue. The perfect stem carries 7 to 8 blooms open at the same time. A variety which will be a favorite when better known. Each, \$2.50; \$22.50 for 10.

BERTIE SNOW. Large flowers of a beautiful lavender-pink, of Scotch origin. Of excellent substance and placement with eight or more open at one time. A most suitable exhibition variety. \$5.25 for 10; \$50 per 100.

BYRON L. SMITH (*Early*). One of the best; refined lavender-pink on white ground. Color equal to a very choice *Cattleya Orchid*; many blooms open at one time; extremely effective and fine as a cut flower. \$1.25 for 10; \$10 per 100.

CAPTAIN BOYNTON (*Midseason*). Exceptionally fine lavender variety. Large blooms of good substance, many open at one time, and well placed on a strong, straight spike. Color white, brushed with lavender. Maroon blotch on lower petals. A prize-winning exhibition variety. \$1.25 for 10; \$10 per 100.

DR. ELKINS (*Midseason*). A true sport from "Mrs. Frank Pendleton." Same large and showy flower, but the original rose-pink has changed to white and the large throat blotches to a fine shade of lilac-blue. A distinct and classy flower and a decided acquisition. \$1.50 for 10; \$12.50 per 100.

GERALDINE FARRAR (*Midseason*). Pale lavender-violet with deep violet spot on lip. It has four side spikes on the main stem and brings two extra spikes from the bottom, out of the same eye, which is different from any other variety. It has made a deep impression upon all who have seen it. \$2.75 for 10; \$25 per 100.

HEAVENLY BLUE (*Midseason*). Aniline-blue. Some years ago we did not dare to think of *Gladioli* with such a tender heliotrope-lilac color as that of "Heavenly Blue." It has a very long spike with often more than ten blooms open at the same time. A very beautiful variety that should be in every collection. For the first time available at a moderate price. \$4.75 for 10; \$45 per 100.

JANE ADDAMS (*Midseason*). A very beautiful new lavender variety. A more refined and better grower than the variety "Byron L. Smith," but of similar color. \$4.25 for 10; \$40 per 100.

KATHERINA (*Midseason*). Wonderful grayish light blue, lower petals a little deeper blue with small brownish-red spot. \$1.50 for 10; \$12 per 100.

KIRCHHOFF'S VIOLET (*Early*). Color is a true violet-blue with darker throat markings. A most beautiful Gladiolus. \$3.25 for 10; \$30 per 100.

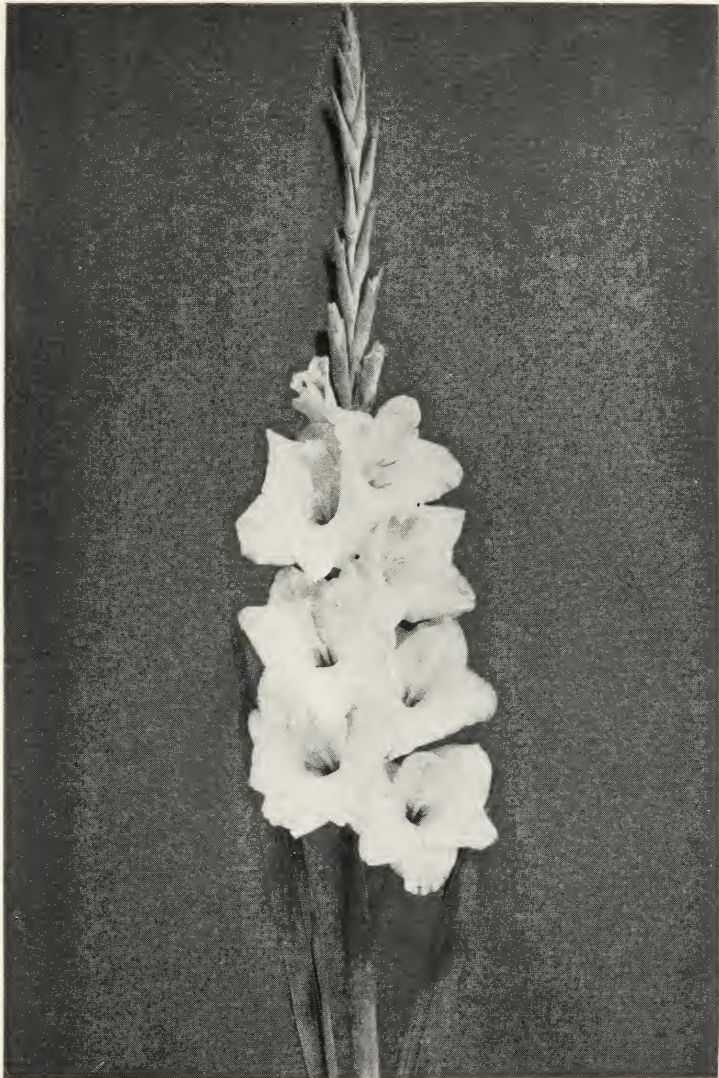
LOUISE (*Late*). The lavender queen among the Gladioli. Velvety wine-colored blotch toward the center. Large well opened Orchid-like flower. \$1 for 10; \$7.50 per 100.

MARY FREY (*Early*). Probably the earliest of all good lavender Gladioli. Color is a clear, refined lavender with a ruby blotch in throat. Florets are well arranged and carried on a strong spike. \$4 for 10; \$37.50 per 100.

MINUET (*Late*). Self colored lavender, rich, very large flower of heavy substance. Experts who have seen this variety agree that it will become the leading variety in this color. \$4.25 for 10; \$40 per 100.

MR. MARK (*Midseason*). Lobelia-violet suffused Saccardo's violet; throat barium-yellow with a blotch of amaranth-purple. This is one of the best of those commonly known as light blue varieties. Very popular as a cut flower variety. \$1.25 for 10; \$10 per 100.

MRS. FREDERICK C. PETERS (*Late*). Beautiful shade of rose-lilac, with crimson blotch bordered white on lower segment; resembles an Orchid in color. Flowers of large size and many open at one time on a strong stem. Awarded First Class Certificate of Merit by the Massachusetts Horticultural Society and other High Awards. \$1.05 for 10; \$8 per 100.



GLADIOLUS MINUET

MRS. VAN KONIJNENBURG (*Midseason*). Matchless aniline-blue; grows five feet tall carrying beautiful blooms, many open at one time, well placed. Superior to any blue variety so far introduced. Awarded Certificate of Merit wherever shown. A magnificent variety of which we have now sufficient stock, to offer it at a more reasonable price if purchased with other varieties. \$3.25 for 10; \$30 per 100.

MURIEL (*Early*). One of the finest and best blues under cultivation today; beautiful light blue with small darker spot. \$1.40 for 10; \$11.50 per 100.

ORCHID (*Early*). The Orchid is a wonderful flower. When arranged with a background of green it looks much like a Cattleya Orchid, as it is like an Orchid in both form and color. The flowers range in natural spread of petals from five to eight and one-half inches, with four or five open at one time, with peculiar lasting power as a cut flower when worn as a corsage bouquet and therefore kept out of water. It has lacinated edges and beautiful ruffling, but leaves to the imagination the exquisite Orchid coloring—lavender-pink upon the paler flushed, frosted surface. \$1.25 for 10; \$10 per 100

ORCHID LADY (*Midseason*). Beautiful large flowers of a clear Orchid-lavender with creamy throat. The flowers are of immense size with many open at one time. Splendid spike. A truly outstanding variety. \$4.75 for 10; \$45 per 100.

REVEREND EWBANK (*Early*). Charming variety of light porcelain-blue. Very much admired and wanted as varieties of this color are rare. Early planted bulbs will sometimes produce crooked stems which is avoided by late planting. \$1.50 for 10; \$12.50 per 100.

SWEET LAVENDER (*Early*). Exceedingly lovely lavender-pink with distinct deeper blotch on the lower segment,

making a very pretty combination. Should be planted in company with a soft yellow variety. Flowers well placed on good straight stem. \$1.25 for 10; \$10 per 100.

VEILCHENBLAU (*Midseason*). True violet-blue which has been greatly admired at the recent exhibitions. Beautiful wide-open flowers are artistically placed on tall stem. Should be in every worth while collection. The winner of many prizes at the recent National Gladiolus Show. \$4.75 for 10; \$45 per 100.

Violet and Purple Shades

ANNA EBERIUS (*Midseason*). Deep rhodamine-purple, shading into very deep bordeaux center. Large blooms, many open at one time, well placed on tall spike. A grand variety. \$1 for 10; \$7.50 per 100.

BARON HULOT (*Midseason*). Royal purple; still the best variety in just this color. \$1.40 for 10; \$11.50 per 100.

CHARLES DICKENS (*Midseason*). This variety won the Highest Awards at the various important European Flower Shows. Color is a violet-purple, very long gracious spikes, five feet high, with from ten to twelve flowers open at a time. A splendid Gladiolus. \$2.75 for 10; \$25 per 100.

DUCHESS OF YORK (*Early*). Tall, erect-growing purple-blue, very much the color of "Baron Hulot," with larger florets. \$1.25 for 10; \$10 per 100.

ELKHART (*Midseason*). Very clear, light violet-purple, deeper in throat. An extraordinarily rich color, unusually fine and choice. One of our favorites. \$2.25 for 10; \$20 per 100.

PAUL PFITZER (*Midseason*). A most attractively colored Gladiolus of brilliant velvet-purple. A most vigorous and healthy grower. Florets are perfectly placed. A fine exhibition variety. \$5.25 for 10; \$50 per 100.

REAH (*Midseason*). A rich mallow-purple shading to pink in the center with a deep velvety almost black blotch in the throat. A very unique and outstanding variety. \$3.25 for 10; \$30 per 100.

VIOLET GLORY (*Midseason*). Flowers are large of a rich deep violet with deeper markings in throat. \$1.75 for 10; \$15 per 100.

Pink, Rose-Pink and Salmon Shades

AMERICAN BEAUTY (*Late*). Brilliant American Beauty color. Throat creamy yellow striped with ruby. Flowers are very large and have several open at one time on strong tall spike. \$1.25 for 10; \$10 per 100.

ANNIE LAURIE (*Late*). A new variety of exceptional merit. White, flushed pink, semi-ruffled, the ruffling of a very fresh carmine-pink, slight marking of same color in throat. Total effect a dainty, delicate pink. Like its namesake. "The fairest that e'er the sun shone on." \$1.50 for 10; \$12.50 per 100.

ANTHONY B. KUNDERD (*Midseason*). Tall, large, intensely-ruffled flower of delicate, deep cream color. Overspread finest blush-pink. Entire lower petals beautiful primrose-cream flushed pink at edges. \$1.40 for 10; \$11.50 per 100.

APRICOT GLOW (*Early*). A most outstanding color. The large flowers which are carried on a tall, graceful stem are of clear apricot. Placement of flowers is ideal. \$3.25 for 10; \$30 per 100.

BREAK O'DAY (*Early*). Massive spikes with several flowers open at one time. The color is a soft La France-pink flushed over a cream ground and shading deeper at tip of petals. There is a zone of martius-yellow on lower petals with delicate central lines of Brazil red. One of the best extra early varieties. \$1 for 10; \$7.50 per 100.

CORYPHÉE (*Midseason*). The color of this variety is the purest pink imaginable. Perfect, large, well formed flowers, 8-10 in number are carried on an excellent spike. Perhaps the most refined color in a Gladiolus. Plant late to prevent crooked stems which early planting sometimes develops. This splendid variety received the highest awards at the various American and European Gladiolus Shows. Each, \$1.50; \$11.25 for 10.

DR. NELSON SHOOK (*Early*). A giant in plant and flower. The color is a deep tyrian rose. A wonderful exhibition variety, it has received the highest awards wherever exhibited. \$2.75 for 10; \$25 per 100.

E. J. SHAYLOR (*Early*). A beautiful pure deep rose-pink, ruffled variety; awarded Certificate of Merit by the Royal Horticultural Society of England; a tall very strong plant with large blooms; very choice. \$1 for 10; \$7.50 per 100.

EUGENE LEFÈBRE (*Midseason*). A very attractive variety of French origin. The color is a deep rose with very prominent deeper throat blotch bordered white. The flowers are well placed, large, with six or more blooms open at one time. A strong and vigorous grower. \$2.75 for 10; \$25 per 100.

EVELYN KIRTLAND (*Midseason*). Beautiful variety; the flowers, of strong substance, are a fine shade of rosy pink, darker at the edges, fading to shell-pink in the center, with brilliant small scarlet blotches on the lower petals. It is difficult to describe adequately the beauty of this variety; the entire flower shows a glistening, sparkling luster. Wide open, somewhat reflexed, slightly fluted and many open at one time. Very large flower spike; straight but slender and bending gracefully. \$1 for 10; \$7 per 100.

FREDERICK CHRIST. A beautiful color combination of La France pink and yellow, one of the most harmoni-

ous combinations in a Gladiolus. The large flowers are carried on a tall erect spike with many blooms open at one time. An outstanding novelty. Each, \$2; \$18.50 for 10.

GIANT NYMPH (*Early*). A giant in growth with florets of light rose-pink with creamy yellow throat. A very fine exhibition variety. \$1 for 10; \$7.50 per 100.

GLORIANA (*Early*). Golden salmon with clear yellow throat. One of the most beautiful colorings we have ever seen in a Gladiolus. Very scarce. \$1.75 for 10; \$15 per 100.

HALLEY (*Early*). Very early delicate salmon-pink. Large, well opened flowers, nicely placed on long graceful spike. \$1 for 10; \$5 per 100.

HELEN JACOBS (*Early*). Large clear jasper pink, lower petals straw colored with crimson stippling. Six to eight flowers open at one time are carried on a strong tall stem. A fine exhibition variety. Each, \$5; \$47.50 for 10.

JENNY LIND (*Midseason*). Pure, soft apricot-pink, throat pale yellow, blending perfectly. Many blooms open at one time. Beautifully tinted; exceedingly refined and attractive variety. \$1.25 for 10; \$10 per 100.

KATHERINE COLEMAN (*Midseason*). Rare and exceedingly choice new variety of a very rich coral-pink with throat markings of American Beauty tinge. Very tall, slender spike that is always erect with eighteen or more buds; as many as eight open at once. A fine cutting and exhibition variety. \$2.75 for 10; \$25 per 100.

LONGFELLOW (*Midseason*). One of the most beautiful varieties ever introduced. Entire flower of the clearest La France pink, prominent lighter midrib. Flowers large, wide open, of good form and always perfectly

placed. Spike tall and slender, always straight. Fine for cutting and on exhibition it will win in competition with the best. \$1.50 for 10; \$12.50 per 100.

LOS ANGELES (*Midseason*). Delicate pink with cerise feathering in throat. Produces several spikes. Good cut flower variety. \$1 for 10; \$7.50 per 100.

MARIETTA (*Early*). This beautiful variety is a delicate shade of light salmon with pale orange tinge, lower petals frequently shading to a clear deep burnt-orange. The flowers are five to six inches in diameter, well placed on a straight spike. A grand variety of vigorous and clean growth. Rapid and prolific producer. \$1.75 for 10; \$15 per 100.

MARSHALL FOCH (*Late*). A sensation wherever exhibited. Do not confuse with the variety Le Maréchal Foch. Many giant flowers open at one time on very strong stem and plant. Almost a self-color; one of the finest salmon-pinks. Winner of a great many awards. \$1.25 for 10; \$10 per 100.

MRS. DR. NORTON (*Midseason*). Exceptionally and delicately beautiful color; pale flesh-pink with primrose center, tinted rosy on lower petals. \$1 for 10; \$7 per 100.

MRS. E. H. MAYTAG (*Midseason*). An outstanding novelty, greatly admired by all visitors to our trial gardens. The flowers are well placed with six or more open at one time. The color is an exquisite shade of soft salmon-pink. Slightly ruffled. A very strong and graceful grower. Each, \$2.50; \$22.50 for 10.

MRS. F. PENDLETON, JR. (*Early*). Very large, well expanded flower; salmon-pink, heavily blotched with blood-red in throat. Always a spectacular variety. \$1 for 10; \$5 per 100.

MRS. HARRISON WILLIAMS (*Early*). Light coral-pink darkening toward edges, yellow throat with crimson

feathery markings. Flowers are delicately ruffled, well placed. Good strong grower. A very beautiful novelty. Our exclusive introduction. Each, \$1.50; \$12.50 for 10.

MRS. H. E. BOTHIN (*Late*). Light Geranium pink, heavily ruffled. Flame scarlet center. Strong, well built spike; one of the loveliest color combinations and generally admired. Belongs in any worth while collection. \$1 for 10; \$7.50 per 100.

MRS. LEON DOUGLAS (*Midseason*). Ground color Begonia rose striped with flame and brilliant scarlet. Lip pale lemon slightly speckled with ruby. This exceptional variety produced as many as seven spikes, each extra long, carrying many of the largest blooms, all well open, and well set; one of the aristocrats of the show halls. \$1.05 for 10; \$8 per 100.

MRS. P. W. SISSON (*Midseason*). Very fine ruffled light pink. This variety won highest honors at recent flower shows. \$1.75 for 10; \$15 per 100.

MRS. WILLIAM H. HOFFMAN (*Midseason*). A very refined flower, ruffled. Color is a buff pink shading darker towards the edges. Throat is yellow with crimson feathery markings. Flowers are well placed, six open at one time. A very strong and graceful grower—should be in every collection. Our exclusive introduction. Each, \$1.50; \$12.50 for 10.

MR. W. H. PHIPPS (*Late*). La France pink overlaid with light rose-salmon, lighter toward the center. Lower petals very faintly striped and speckled with ruby. The flowers are enormous and of unusual substance. A masterpiece. Still considered one of the most wonderful Gladioli under cultivation today. Our Mr. John T. Scheepers considers this the finest all around Gladiolus for the garden. \$1.50 for 10; \$12.50 per 100.

OSALIN (*Early*). A fine variety very much admired in our experimental gardens the past few seasons. Of outstanding beauty and merit. Especially attractive under artificial light. A lovely coral pink with soft orange markings in the throat. \$2.25 for 10; \$20 per 100.

PEARL OF CALIFORNIA (*Midseason*). Strong, upright grower, flowers of excellent quality, measuring five inches in diameter on long spike which contains 26 to 32 buds, with 8 to 12 open at a time, appearing like a large bouquet. Of the clearest, softest La France pink blending to a rosy white throat. \$3.75 for 10; \$35 per 100.

PHAENOMEN (*Early*). Beautiful combination of the softest salmon-pink and the finest yellow. Comparable with the Cottage Tulip Rosabella as to color. A long spike produces lovely colored, well formed blooms, well set, many of which are open at one time. Exceptionally fine, artistically colored, delicately beautiful variety that we recommend very highly. Certificated wherever shown. \$2.25 for 10; \$20 per 100.

PRINCE OF WALES (*Early*). Very beautiful, early flowering variety, producing large blooms of delicate apricot-pink suffused salmon. \$1 for 10; \$7.50 per 100.

REMEMBRANCE. Geranium pink deepening to Rose Dorée at the outer edges, the throat is blotched with Pomegranate purple slightly ruffled, very beautiful color. \$1.25 for 10; \$10 per 100.

RICHARD DIENER (*Late*). Pure Geranium pink with a slight sprinkling of ruby on creamy yellow center. Large, flaring blossoms, rivaling an Orchid in beauty. The acme of perfection in coloring. \$1.25 for 10; \$10 per 100.

RITA BECK (*Late*). A Fischer variety of great merit. Very strong, sturdy, heavy textured blooms of large

size; very clear La France pink. Many florets open at a time. Stock limited. \$5.25 for 10; \$50 per 100.

ROSE GLORY (*Midseason*). Very large and beautifully ruffled variety of purest rose-pink, deeper in throat. Very fine. \$1.25 for 10; \$10 per 100.

SWEET ROSE (*Midseason*). Clear deep rose-pink, with Cherry throat. Flowers are of fine substance. Very vigorous grower. \$1.75 for 10; \$15 per 100.

TARO (*Midseason*). The large flowers carried on strong spikes are of an American Beauty Rose shade. An outstanding variety. \$1.25 for 10; \$10 per 100.

VANITY FAIR (*Midseason*). Very tall, healthy growing variety of clear rose pink with a deeper throat blotch. Many florets open at one time. A most suitable exhibition Gladiolus. \$2.75 for 10; \$25 per 100.

WILLIAM G. BADGER (*Midseason*). Very tall. Large flowers of a fine salmon-pink, throat creamy with ruby markings. \$1.25 for 10; \$12.50 per 100.

Orange and Yellow Shades

BETTY NUTHALL (*Early*). One of the most outstanding introductions from California. The flower spikes are long and graceful, carrying from six to eight large well expanded blooms open at one time. Some blooms have measured six inches across. The color is a warm light coral, with pale orange markings in throat, feathered carmine. For the first time offered at moderate price. \$5.50 for 10; \$50 per 100.

CALIFORNIA CANARY (*Early*). Very tall, light golden yellow to canary with rich amber-yellow on two lower petals. From 18 to 20 flowers on a spike with 6 to 8 open at one time. Well placed. A very fine cut flower. \$4 for 10; \$37.80 per 100.

E. I. FARRINGTON (*Midseason*). A very beautiful variety. Its color is of the clearest yellow and nicely ruffled. Fine spike with florets perfectly placed. \$6.25 for 10; \$60 per 100.

GOLDEN DREAM (*Midseason*). A clear deep golden yellow of splendid substance. Very tall spike with many flowers open at one time. A very distinctive variety. \$2.50 for 10; \$22.50 per 100.

GOLDEN GLORY (*Midseason*). A large richly colored yellow with beautiful throat blotched red. Ruffled and very choice. \$1.75 for 10; \$15 per 100.

GOLDEN MEASURE (*Midseason*). The great incomparable true golden yellow, without question one of the most magnificent yellow Gladioli under cultivation; gigantic spike carrying enormous wide open flowers of fine form. Excellent in every way. \$1 for 10; \$7.50 per 100.

HOMESTAKE (*Late*). Ground color is a rich pinard yellow, veined cornelian red, the lines getting somewhat heavier toward the edges. The general effect is a deep, rich orange flower. A very choice and exquisite variety. \$5.25 for 10; \$50 per 100.

LA COURONNE (*Early*). Creamy yellow, lower petals shading to deep yellow at the base, blotched and stippled brilliant scarlet. Of outstanding merit and very distinct. One of the showiest and most pleasing of the blotched varieties. Very early. \$2.25 for 10; \$20 per 100.

LOYALTY (*Midseason*). A magnificent Gladiolus having large heavily ruffled flowers of deep golden yellow carried on a strong tall spike. Each, \$1; \$9.50 for 10.

MARY CAPEN (*Early*). A most beautiful orange colored Gladiolus which is greatly admired by all who have seen it. Tall and vigorous grower with five to six flowers open at one time. Each, \$2.25; \$20 for 10.

NANCY HANKS (*Midseason*). Very rich Peach red to orange-pink with prominent grenadine tongue. Wide open flowers much on the order of Alice Tiplady but larger and taller. \$1.25 for 10; \$10 per 100.

ORANGE WONDER (*Midseason*). A strong, vigorous growing Gladiolus of an unusual bright orange color. Flowers are very large and well placed. A very fine novelty. \$7.75 for 10; \$75 per 100.

POLLYANNA (*Midseason*). Almost a self color of rich, clear, golden yellow. Many finely waved blooms wide open and well placed. A variety of great promise. \$1.25 for 10; \$10 per 100.

PRIMROSE PRINCESS (*Midseason*). Extra large flower of finest primrose-yellow. A very fine novelty. \$4 for 10; \$37.50 per 100.

SEÑORITA (*Midseason*). One of the outstanding Gladioli of recent years. The color is orange shading to salmon. The lower petals are bright orange with prominent carmine tongue and penciling. The flower is very large and open. It will command admiration wherever shown. "Gardening Illustrated" in an article of September 22, 1928, calls it "one of the most outstanding Gladioli of recent introduction." Each, \$1; \$9.75 for 10.

SIDNEY PLUMMER (*Late*). Beautiful soft yellow, suffused delicate pink. Rich amber lip, amaranth-purple tongue. Large flowers, well placed on tall strong spike. Slightly ruffled. One of the outstanding varieties as a cut flower or in the garden. \$1 for 10; \$7.50 per 100.

SUNNYMEDE (*Midseason*). Rare shade of orange-yellow with deep red blotch. This is a fine distinct Gladiolus, desirable in every way, the artistically colored flowers being attractively placed on a tall spike several open at one time. Makes unusual combinations with soft lavender, pink and paler yellow sorts. \$1.50 for 10; \$12.50 per 100.

Red and Scarlet Shades

CARDINAL PRINCE (*Early*). A magnificent self-colored cardinal red. Flowers are large and of splendid form and placement. Six to eight blooms open at a time. Strong and vigorous grower. \$1.25 for 10; \$10 per 100.

CRIMSON GLOW (*Midseason*). Very large flowers wide open, of the finest form, exceedingly well placed on very tall spike; a beautiful glowing crimson, of a deep tone, earliest and most beautiful of all in this color. \$1 for 10; \$7.50 per 100.

DR. F. E. BENNETT (*Midseason*). Deep Peach red overlaid with flame scarlet. Lip speckled ruby and white. Most fiery red imaginable. The flowers are of very large size, many opening at one time, exceptionally well placed on tall stem. Most perfect red under cultivation today. \$1.25 for 10; \$10 per 100.

KING GEORGE. A most attractive exhibition variety coming to us from Scotland. Color is a very refined dark red with darker edges and a creamy blotch in throat. Strong and vigorous grower. A variety which will become very popular. \$5.25 for 10; \$50 per 100.

MRS. FRANCIS KING (*Early*). Bright salmon-rose shaded scarlet; velvety crimson blotch on lower petals. An older variety than many, but still a great favorite among the brighter colored Gladioli. \$1 for 10; \$5 per 100.

PERSIA (*Midstream*). The interest displayed the past few seasons where this Gladiolus appeared was little short of sensational. A remarkably colored Gladiolus of extremely deep red of the mahogany tone, so dark as to appear almost black, the buds appearing perfectly black. Add to this a wonderful over-spread of the most velvety sheen that glistens like the sparkling dew. Texture is very heavy, the florets appearing

as made of heavy velvet. One of the most beautiful and the darkest variety in cultivation. \$1.50 for 10; \$12.50 per 100.

PFITZER'S TRIUMPH (*Midseason*). When this irresistibly beautiful variety was exhibited we believed that perfection and finish had been reached. Blooms as big as an *Amaryllis*, more than six to seven inches in diameter, of a bright salmon-orange color and small velvet red blotch. Indeed a brilliantly colored and startling exhibition variety. Certified wherever shown. The most perfect in this color and well named in honor of the man who has brought us so many wonderful varieties. \$4.25 for 10; \$40 per 100.

PYTHIA (*Midseason*). Another Kunderd variety that is unique. A gigantic red with many blooms open at a time. Extremely showy. \$1.50 for 10; \$12.50 per 100.

QUEEN OF THE NIGHT. A very fine variety. Its color is of the darkest maroon, so dark as to give it an almost black appearance. Very fine tall spike. \$4.25 for 10; \$40 per 100.

ROSALIND (*Early*). Dark, aniline-red with deeper colored throat. A very distinct variety, one of Kunderd's best introductions. \$1.75 for 10; \$15 per 100.

SCARLANO (*Early*). A brilliant, striking flower of rich orange-red, large ruffled finely formed bloom. \$1 for 10; \$7.50 per 100.

SCARLET PRINCEPS (*Syn. Virginia*) (*Early*). A beautiful soft Raspberry red, shading to Begonia rose in throat. Large wide open flowers well placed. A charming self color. \$1 for 10; \$7.50 per 100.

SCARLET WONDER (*Late*). Giant-flowered, rich, glowing scarlet-red self color. An introduction of great merit. \$1.25 for 10; \$10 per 100.

VIRGINIA (*See SCARLET PRINCEPS*).

White and Cream Shades

ALBATROSS (*Midseason*). Unquestionably the finest white *Gladiolus* under cultivation. Color is of the purest white without any markings or blotches. A wonderful exhibition variety. Each, \$1.50; \$12.50 per 100.

CARMEN SYLVA (*Midseason*). One of the best of the white varieties. A pure white except for slight violet markings deep in the throat. Tall, slender stem always straight; flowers well arranged on the spike. \$1 for 10; \$7.50 per 100.

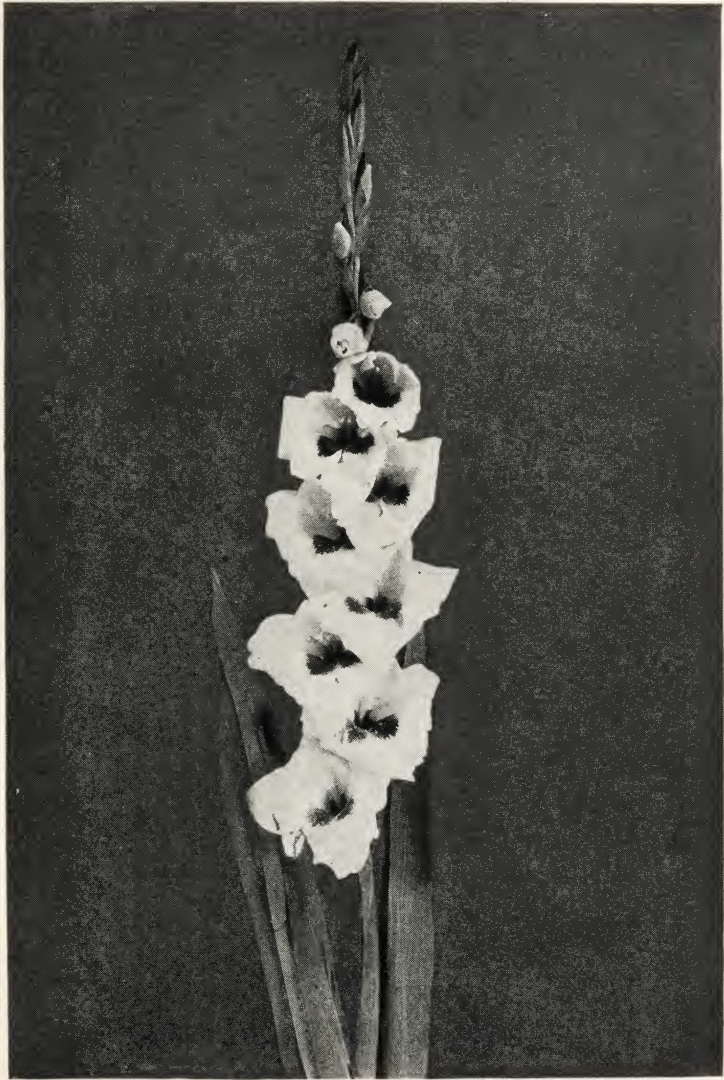
EUROPE (*Midseason*). Perfectly formed pure white, produces a magnificent spike; lovely cut flower. \$1.75 for 10; \$15 per 100.

FERN KYLE (*Early*). A large, ruffled flower of creamy white color. Vigorous grower. Creates a sensation wherever exhibited. \$1 for 10; \$10 per 100.

HELEN WILLS (*Early*). A most beautiful, very elegant, clean, large white, shading to soft canary on lower petals. Tall, vigorous and of wonderful substance. Six to eight flowers open at one time and carried on a fine tall spike. One of the finest of the white varieties. \$4 for 10; \$37.50 per 100.

HENRY C. GOEHL (*Midseason*). Flowers large and well opened, with broad segments of solid white slightly flushed with pink. A deep crimson blotch on the lower segments. Good spike with well placed flowers, five to seven open at one time. \$1.50 for 10; \$12.50 per 100.

HOLLYHOCK (*Midseason*). Very tall ruffled creamy white with a very conspicuous carmine blotch in the throat. The flower surprisingly resembling a Hollyhock. A very novel and attractive variety. \$2.25 for 10; \$20 per 100.



GLADIOLUS MADAME MOUNET SULLY

IDAMAE (*Early*). Very large wide open ivory white, lower petals overlaid yellow with delicate rose penciling in throat. Very popular. \$1.75 for 10; \$15 per 100.

MADAME MOUNET SULLY (*Early*). This is an extraordinarily attractive variety that stands forth most prominently in any collection. The flowers, of finest texture, many open at one time, closely set on a good stalk, are of a milky white, with a large orange blotch. Very early. \$4.25 for 10; \$40 per 100.

MARY PICKFORD (*Early*). A grand flower and spike of most delicate creamy white, throat finest soft sulphur-yellow, stem and calyx also white; worthy of a great name; awarded First Class Certificate by the Royal Horticultural Society of England and other Horticultural Societies. \$1 for 10; \$7.50 per 100.

MRS. F. C. HORNBERGER (*Late*). We have grown a good many white Gladioli but never have we seen a more beautiful creation than this variety. It is positively one of the finest ever produced and will rank as a leading white. Nicely ruffled, wide open, perfectly placed bloom of remarkable texture with 28 buds to the spike. Strong, sturdy, and very vigorous grower. A genuine thrill is in store for you when you see this variety. \$2.50 for 10; \$22.50 per 100.

PUREST OF ALL (*Midseason*). A very fine pure snow-white variety; large flowers well placed on excellent spike. Many blooms open at one time. Certified wherever exhibited. Should be in every collection. \$1.50 for 10; \$12.50 per 100.



"Life is the gift of nature but beautiful living is the gift of wisdom."

Superior Mixtures of Gladioli

DURING the growing season in our trial gardens, it will some times occur that name-labels will become misplaced or that we cannot be absolutely certain of the names of varieties. We place all such fine sorts together and sell this choice stock as a Special Mixture of named varieties. This is especially valuable material for the cutting garden. \$8 per 100; \$75 per 1000.



*In the morning sweet with blossoms
and gold of sun everywhere, and the blue
of sky until the rose red waning at the
day's end and the twilight softly steals down
upon it*

*A thrush singing its exquisite vesper
Service that fills our hearts with wistful
gratitude who hear it there*

*The still house awaiting our incoming
from the Garden*

*The pleasant lights of familiar rooms
and flowers in crystal jars*

*The dusk that falls silvery and silent
over all the earth spaces*

*Lily fragrance on the damp atmosphere
that drifts in through the open casement
Peace without, Rest within
It is night in my garden*

—FLORENCE VAN FLEET LYMAN

Choicest Gladioli

"Primulinus Hybrids"

THIS race, graceful as Orchids, has become extremely popular; in exquisite shades of all colors, from terra-cotta, through bronze, red, copper, rose, pink, saffron, buff, yellow, lavender to white, this great variety is difficult to describe.

Smaller of flower, wiry of stem, dainty of form, they lend themselves particularly for artistic arrangement, and their decorative value is great, be they used as cut flowers for baskets, vase or other decoration.

Very showy displays can be made in the garden by planting in masses of distinct colors or groupings of pastel shades; their butterfly-like flowers airily set on slender strong spikes in a range of colors brilliant and beautiful, create lovely effects.

The hooded feature of some *Primulinus* gives a suggestion of modesty and reserve; their colors are a constant delight and the arrangement of the flowers on the stalk is artistic to the highest degree; they are valuable also for their earliness, daintiness and great variety.

The allurements, the subtle shades and the fine complexion of these glorious things, of these lovely forms, will presently make every garden lover a *Gladiolus* grower.

A few have been selected and named; others equally beautiful are offered in separate colors and in mixture. The open faced, closely set varieties we prefer.

Choicest Varieties of Primulinus

ADA DE POY. Very beautiful *Primulinus* hybrid of clear apricot with bronze shadings. Very long spikes of well placed florets with six or more open at a time. Slightly ruffled. A very refined exhibition and cut flower. \$1.75 for 10; \$15 per 100.

AFLAME. Begonia rose shading to bright orange flame near the edge. The back of the petals is lighter. Flowers are very large, six inches or more across, six or more blooms are open at the same time. A truly wonderful variety. \$6.50 for 10; \$62.50 per 100.

ALICE TIPLADY. Large-flowering Primulinus; beautiful orange-saffron, many flowers open at one time; extremely decorative, also very beautiful if grown under glass. Wide open flower; winner of hundreds of awards. \$1 for 10; \$5 per 100.

CATALINA. Bright rosy pink Primulinus with pale lemon-yellow throat. The pink is most intense at the outer edges of petals and becomes more delicate toward the center of the flower, blending gradually with the yellow. Spikes are tall and graceful. A very beautiful Gladiolus. \$1.05 for 10; \$8 per 100.

ETHELYN. Very fine orange-yellow. Choice and distinct. Rating 92 out of a possible 100. \$1 for 10; \$7.50 per 100.

GOLDEN FRILLS. Deep rich Daffodil yellow with pink lines on lower petals; intensely ruffled and one of the most beautiful of the newer introductions. \$1.50 for 10; \$12.50 per 100.

LILAC WONDER. This variety fills a strong demand for a strong growing lilac colored Primulinus. Its graceful form and pleasing lilac color make it admired by all who have seen this variety grow in our Exhibition Gardens. \$2.50 for 10; \$22.50 per 100.

MAIDEN'S BLUSH. Unquestionably one of the finest pink Gladioli of the Primulinus type. It is a strong grower, bearing medium to large flowers of a most exquisite shade of maiden's blush pink. Delicate, dainty, beautiful. The blooms are set close and artistically on long, slender, wiry stems, that lend themselves to a gracefulness seldom seen in a Gladiolus. A profuse

bloomer, and most effective in the garden. Very decorative for cutting. A remarkably rapid propagator. \$1 for 10; \$5 per 100.

MISS CALIFORNIA. The large flowers are of a clear hermosa-pink with amber-yellow lip, stippled carmine deep in throat. Five or more flowers are open at one time and of perfect placement. Tall and vigorous grower. The winner of many awards in Grandiflora Primulinus classes. \$4.25 for 10; \$40 per 100.

MISSION BELLS. A most beautiful Gladiolus of a rich orange-pink color. Spikes are tall and graceful with many flowers open at one time. A variety which should be in every collection. \$1.25 for 10; \$10 per 100.

MRS. JOHN T. SCHEEPERS. A Primulinus of great merit. The color is clear light salmon-pink, very delicately veined. We have grown this seedling for six years—our introduction for 1929—and have carefully tested it and we find it one of the most satisfactory in the Primulinus class. \$5 for 10; \$47.50 per 100.

ORANGE QUEEN. Large-flowering variety similar in form to the very desirable "Alice Tiplady"; blooms wide open, not "hooded." An entirely new color; warm apricot-orange. Well placed, six to eight open at one time on tall slender spike. So distinct from other Primulinus, both in color and substance, that it cannot be praised too highly. Striking in its effect. Strong vigorous grower. \$1.25 for 10; \$10 per 100.

PATRICIA CARTER. Tall rugged plant with fine spike having five or six perfectly placed flowers open at one time. The color is a most beautiful tone of softest light shrimp pink with no markings. One of the most refined and beautiful colors ever given to a flower. An outstanding variety which belongs in every collection. \$5.25 for 10; \$50 per 100.

PRIM PICOTEE. We consider this variety as one of the most interesting and unusual novelties in the *Gladiolus* family. The color can be described as a bright red having a distinct border of yellow. Petals of each floret are very long and narrow. A most delightful *Gladiolus* for table decoration. \$3.25 for 10; \$30 per 100.

ROSE LUISANTE. Brilliant pink with yellow throat; good size flower, very fine. This unusual, soft colored, most desirable variety is always much admired; most effective for cutting, its delicate pastel shades charmingly harmonizing with most any other color. \$1.15 for 10; \$9 per 100.

ROSE MIST. Unusual *Primulinus*. Old rose, edged with pallid neutral grey. Distinct and wonderful variety. Large flowers, four to five open at one time on artistic spike, 40 inches long. \$2.50 for 10; \$22.50 per 100.

SALMON BEAUTY. Very large-flowering of a rich salmon with yellow throat. Awarded Certificate of Merit by Massachusetts Horticultural Society and winner of many other high awards. \$1 for 10; \$7 per 100.

SCARLET BEDDER. Very large-flowered *Primulinus* of clear scarlet-red. Blooms are wide open and of magnificent color. The best red *Primulinus* yet introduced. We believe that owing to its high quality, it will become one of the most popular *Primulinus*. \$2.05 for 10; \$18 per 100.

SHELL PINK. Tall, large-flowered, rose-pink with beautiful slightly mottled white throat. Very choice. Winner of many awards. \$1.25 for 10; \$10 per 100.

SOUVENIR. Large flowers well placed on a tall graceful spike, of a beautiful rich canary-yellow; the best yellow of this type. \$1 for 10; \$7.50 per 100.

SWEETHEART. This is an exceptionally beautiful variety, and one that is admirably adapted for any use a

Gladiolus can be put to. The color is a light cream, with golden yellow shading on the lower petals, overlaid with faint rose feathering well down in the throat. A bunch of these dainty flowers held up to the light presents one of the sweetest color combinations imaginable. The golden yellow of the lower petals reflecting on the cream ground of the upper ones imparts a golden halo that radiates through the whole spike, producing an effect of glorious beauty. The flower is wide open, four inches and over in diameter, and well placed on the spike. A strong, healthy grower. \$2 for \$10; \$18 per 100.

WHITE BUTTERFLY. First class all white, with soft, creamy white throat. Especially fine, artistically arranged beautiful cut flower on slender stem. Exceedingly popular. \$1.25 for 10; \$10 per 100.

Superior Mixtures

OUR special Exhibition Collection of finest Improved Primulinus, containing the most beautiful forms and all pastel shadings that will harmonize lovely together in superfine mixture. \$10 per 100; \$95 per 1000.

GENERAL mixture of fine Primulinus in separate shades, carefully graded. \$8 per 100; \$75 per 1000.



*Food and raiment are for the body, but flowers! flowers are for both body and soul. * **

Without flowers my body could live, but I know my soul would starve.

—WILL SNYDER.

*"A door may open anywhere;
Upon a wood or path or lawn
Or crowded street or road, or there
Where none pass by from dawn to dawn;
But, if you'd have a mind at peace,
A heart that cannot harden,
Go find a door that opens wide
Upon a little garden."*

—E. M. BOULT

MONTBRETIAS

Montbretias

MONTBRETIAS are graceful, sparkling flowers of the mid-summer and autumn, reflecting the colors of the advancing year and lending a charming gaiety and lightness to the borders.

For the best effect the bulbs, more correctly called "corms," should be set only a few inches apart, and in groups of not less than a dozen, near the front of herbageous borders or shrubbery. Thus planted the sheaves of narrow leaves and slender, arching stems strung with brilliant flowers, like miniature Gladioli, have the appearance of little fountains of bright color—rose, scarlet, yellow, orange, red, often marked with brown. They flower for many weeks, and a border where blue and white flowers predominate set at intervals with such gay patches of color, is delightful indeed.

Their long lasting qualities make Montbretias most admirable for cutting, so that it is well to have a few hundred bulbs set out in some by-place where the graceful stems may be copiously cut for house and piazza decoration.

These Cape bulbs may with entire safety be left in the open ground over the winter, and merely covered with a light mulch. They may be set out in the spring as early as we plant Gladioli, and should be put in the ground at least five inches deep.

As with Gladioli, a quantity of these bulbs might well be planted in pint berry or wire baskets, early and at various times, kept in frost-proof cellar or frame, to be later plunged basket and all into vacant spaces in the borders or other parts of the garden.

We produce this stock ourselves and offer the choicest varieties only.

If thou wouldst attain thy highest, go gaze upon a flower.
—SCHILLER.

The Choicest Varieties of Montbretias

Earlham, Large-Flowered, Hybrid Montbretias

THESE are the magnificent new Montbretias which have attracted so much attention the past few years at the Royal Horticultural Society's shows in late summer and autumn and received many awards. They are a completely new race of flowers and result from hybridization carried out most successfully by Mr. Sidney Morris of Earlham Hall, Norwich, England. They represent an enormous advance on the ordinary Montbretias in commerce, being generally much taller and more robust in growth, and having flowers of great size and beauty, some of them measuring 3 to 4 inches or more in diameter. They make first class border plants and are of great decorative value for cutting.

AURORA. Very large flower, pure orange-yellow. Tall. 10 corms \$5.75; 100 corms, \$55.

GEORGE HENLEY. A very beautiful and vigorous variety, tall-growing, with flowers of great size and substance. The color is chrome-yellow with a tinge of red in the eye of the flower. 10 corms, \$2; 100 corms, \$18.

GOLDFINCH. This variety produces a branching head of flowers of good size, bright yellow with small maroon blotches at center, outer petals heavily shaded brilliant cherry-scarlet; very decorative. 10 corms, \$2.75; 100 corms, \$25.

HENRY VIII. The largest of all Montbretias. Flowers two to three inches in diameter. Bright orange with darker markings. 10 corms, \$4.25; 100 corms \$40.

HIS MAJESTY. Widely expanded flowers remarkable for their great size, are of a pronounced rich yellow in the

center, shading to brilliant scarlet, with three segments heavily covered towards their tips with a rich crimson. The last word in Montbretias. First Class Certificate. 10 corms, \$3.25; 100 corms, \$30.

JAMES COEY. Flowers very large and open, of perfect form, with smooth broad petals, rich deep vermilion-scarlet with golden-orange luster, center yellow with crimson blotches, very handsome; height 3½ feet. 10 corms, \$5.25; 100 corms, \$50.

JOAN OF ARC. Flowers very large, broad-petaled and smooth, glowing deep golden color, with slight crimson markings in center, reverse of petals flushed orange. Height 3 feet. 10 corms, \$7.75; 100 corms, \$75.

LEMON QUEEN. Color creamy yellow, pale center and deep orange buds, a very attractive flower of great decorative value. 10 corms, \$1.75; 100 corms, \$15.

MARJORIE. Large open flowers, orange-yellow, crimson center, a beautiful flower, perfectly flat when fully open. Height 3 feet. 10 corms, \$2.05; 100 corms, \$18.

NIMBUS. One of the most distinct in its class. Flowers golden with a distinct crimson ring around the base. 10 corms, \$4.25; 100 corms \$40.

POCAHONTAS. Rich coppery scarlet, with golden luster. Center orange with small blood-crimson blotches; flowers large and very attractive, height 3 feet. 10 corms, \$3.25; 100 corms, \$30.

PRINCESS. Brilliant ruby-scarlet flowers of fair size, yellow center with small crimson blotches, very effective. Height 2½ feet. 10 corms, \$5.25; 100 corms, \$50.

PRINCESS MARY. A very beautifully shaped flower, pale yellow petals with red tips, and three of the petals bright crimson on reverse side. 10 corms, \$4.25; 100 corms, \$40.

QUEEN ADELAIDE. Deep orange shaded with red on outer side of the petals, strong grower, flowers 4 inches in diameter. 10 corms, \$4.25; 100 corms, \$40.

QUEEN ALEXANDRA. Flowers large and beautiful, chrome-yellow with carmine blotch at base of petals, late flowering. Height 4 feet. Award of Merit. 10 corms, \$2.75; 100 corms, \$25.

QUEEN CHARLOTTE. Of free branching habit, flowers orange-scarlet, center shading to primrose with ruby markings. Height 2½ feet. 10 corms, \$4.25; 100 corms, \$40.

QUEEN OF SPAIN. Flowers of large size, brilliant deep golden orange, reverse of petals golden apricot with small crimson and purple calyx, very brilliant and effective. 10 corms, \$4.75; 100 corms, \$45.

UNA. Flowers rich apricot with carmine blotch, well shaped, of good substance. Height 2½ feet. 10 corms, \$2.75; 100 corms, \$25.

Davison, Large-Flowered, Montbretias

GEORGE DAVISON. Pale orange-yellow, tinted with deeper orange externally. Award of Merit. Very large flowers on three foot stems. 10 corms, \$1.25; 100 corms, \$10.

HEREWARD. Pale orange-yellow, resembling the variety George Davison, but nearly one month later. The flowers have the shape of Martagon Lilies. 10 corms, \$1.25; 100 corms, \$10.

KING EDMUND. Rich golden yellow, deeper externally and chocolate spotted at the throat. A sturdy, vigorous plant, flowers opening quite flat. 10 corms, \$1.25; 100 corms, \$10.

LADY HAMILTON. Yellow suffusing with a richer color until it becomes apricot. The flowers are more trumpet shaped than other varieties and peculiarly graceful. 10 corms, \$1.75; 100 corms, \$15.

LORD NELSON. Deepest in color, purple stems and crimson-scarlet flowers of fine substance, size and finish; 3 feet. 10 corms, \$2.05; 100 corms, \$18.

PROMETHEUS. Award of Merit; a magnificent flower four inches in diameter; deepest orange with showy crimson ring around the eye; most distinct. 10 corms, \$11; 100 corms, \$100.

ST. BOTOLPH. Large clear yellow flowers, suffused with ruddy orange outside. The flowers open quite flat. \$2.75 for 10; 100 corms, \$25.

STAR OF THE EAST. First Class Certificate; Award of Merit. One of the finest Montbretias ever raised; flowers pale orange-yellow, with lemon-yellow eye, expanding quite flat and held erect. The flowers are much larger than any other variety in this class, best blooms measuring five inches in diameter. The size, vigor, color and habit are magnificent and unequalled. 10 corms, \$9.25; 100 corms, \$90.

WESTWICK. Distinct orange-red with clear yellow eye, surrounded with circle of maroon. 10 corms, \$2.75; 100 corms, \$25.

GENERAL mixture of fine Montbretias comprising all Earlham Seedlings, 100 corms, \$26.

GENERAL mixture of fine Montbretias from named varieties carefully graded. 100 corms, \$10; 1000 corms, \$95.

*If eyes were made for seeing,
Then beauty is its own excuse for being.*

—EMERSON.

DAHLIAS

The Choicest of all Dahlias

ANDREA ERICSON (*Informal Decorative*). A splendid new fluffy white Dahlia. Its large flowers are produced on excellent strong stems. In appearance it is like a pure white "Fort Monmouth." Extra strong, field-grown tuber, \$10. Extra strong, well-rooted, pot-grown plant, \$5.

ANTARTICA (*Decorative*). This is a pure white of large size, very free flowering, with an excellent habit of growth. The long, sturdy stems carry the flowers erect at all times. For a white Dahlia, the foliage is exceptionally rugged and healthy. We can recommend this Dahlia highly as both an exhibition and cutflower variety. Extra strong, field-grown tuber, \$7.50. Extra strong, well-rooted, pot-grown plant \$3.75.

ASBURY PARK (*Formal Decorative*). Very large and vigorous growing variety. It is no trouble to get 12 inch blooms, even when not disbudded it is over 10 inches. The color is a light coral pink and it is one shade throughout the entire flower. This variety won many prizes for the past two seasons and it scored 95 in a rigorous test. Stems are very stiff and blooms are usually produced at a pleasing angle to the stem. A remarkable disease and insect resisting grower. Extra strong, field-grown tuber, \$15. Extra strong, well-rooted, pot-grown plant, \$7.50.

CAPTAIN COSTE (*Informal Decorative*). This Dahlia is easily one of the best new Dahlias of the year. It is an exhibition flower of the type we only see every few years. The flowers are always large and bold, many going over 12 inches. The stems are very stout and the large flowers are borne on the side and well above the foliage. The color is a clear empire yellow and looks yellow under artificial light. It has the most

robust foliage we have ever seen in a Dahlia of this color group and is a strong and vigorous grower. Extra strong, well-rooted, pot-grown plants only, \$7.50.

CARDINALIS (*Decorative*). Winner as best undisseminated seedling at Trenton in an extra strong class. It is a brilliant Cardinal-Red. Splendid formation, and the flowers are borne on strong upright stems. Extra strong, field-grown tuber, \$10. Extra strong, well-rooted, pot-grown plant, \$5.

CHEMARS EUREKA (*Decorative*). A beautiful Dahlia almost pure white, the tips of the center petals being lavender. An excellent exhibition variety. Extra strong, field-grown tuber, \$5. Extra strong, well-rooted, pot-grown plant, \$2.50.

COLOR SERGEANT (*Decorative*). A most pleasing color. The deep salmony bronze flowers are of large size. Stems are perfect. A clean and upright grower. Extra strong, field-grown tuber, \$3.50. Extra strong, well-rooted, pot-grown plant, \$1.75.

DOROTHY STONE (*Decorative*). This is a beautiful rose-pink, that was a rival for Kathleen Norris two years ago. We know many who prefer this variety. The foliage is tough in texture. Extra strong, field-grown tuber, \$5. Extra strong, well-rooted, pot-grown plant, \$3.

DR. JOHN CARMAN (*Decorative*). This is an exceptionally strong and vigorous grower. Almost a true American Beauty Rose in color. Stems are excellent and the foliage is strong and tough. Extra strong, field-grown tuber, \$5. Extra strong, well-rooted, pot-grown plant, \$2.50.

ELIZA L. SHEPARD (*Informal Decorative*). A beautiful flower of bright golden apricot orange, evenly blended. The flowers are large and carried on splendid stems. Extra strong, field-grown tuber, \$10. Extra strong, well-rooted, pot-grown plant, \$5.

FORT MONMOUTH (*Informal Decorative*). This mammoth, richly-colored variety was prominent in every show, where it has received many awards both as to size and quality. The color is a rich crimson maroon with a brightness unusual in the darker tones and a faint tinge of bluish violet at lips of petals. Extra strong, field-grown tuber, \$7.50. Extra strong, well-rooted, pot-grown plant, \$3.75.

HELEN IVINS (*Decorative*). A beautiful Orchid-lavender Decorative that was very much admired the past season. The flowers are large and deep and borne on splendid stems. Extra strong, field-grown tuber, \$5. Extra strong, well-rooted, pot-grown plant, \$2.50.

JANE COWL (*Informal Decorative*). A massive deep Decorative with petals curled and twisted. Color a glistening bronzy buff and old gold blending to a deeper shade toward center of flower, reverse of petals a pale flesh color, giving the blossom as a whole a warm glow. A stem of unusual strength holds this giant beauty erect over a plant of ideal growth, foliage thick and leathery, insect resisting. Received many Highest Awards. Extra strong, field-grown tuber, \$3. Extra strong, well-rooted, pot-grown plant, \$1.50.

JERSEY'S BEAUTY (*Decorative*). The most distinctive and the finest pink Dahlia in existence; real pink, not lavender or lilac. A variety of supreme merit and one that is really perfect. No other Dahlia, so far introduced, can measure up to it; it is the standard by which to judge all others—perfect in form, color, stem, keeping qualities, in every way. A magnificent grower making no superfluous wood. Every shoot runs away and carries a perfect flower that can be cut with a long stem. Unbeaten for lasting qualities, whether cut with one or seven foot stems, the blooms never go back on you. Unequaled for planting in clumps in borders. Introduced by us. Extra strong, field-grown tubers, \$7.50 for 10.

JERSEY'S BUTTERCUP (*Formal Decorative*). The color of this Dahlia is picric yellow throughout September, but earlier in the season the outer florets are tinged with amber. It makes a wide spreading bush and is covered with bloom throughout the season. It is not a very large blooming variety, but with disbudding can be grown to good size. It is one of the best cutflower varieties we have seen, stems are slender and stiff and adapt themselves nicely for decorative work. Extra strong, field-grown tuber, \$10. Extra strong, well-rooted, pot-grown plant, \$5.

JERSEY'S GLORY (*Decorative*). The flowers are large and of good form, well placed on the stem. The color is best described as a yellow hue of orange. The stems are long and stiff, but sometimes arch gracefully. It is a robust grower and the flowers are produced very freely; the leaves are thick and leathery in texture. The long stems branch freely from the base and the stems may be cut as those of Jersey's Beauty. A splendid exhibition variety as well as a fine cut flower. Extra strong, field-grown tuber, \$5. Extra strong, well-rooted, pot-grown plant, \$2.50.

JERSEY'S MASTERPIECE (*Decorative*). Strawberry-pink suffused gold at base of the florets. This is a bold and upstanding variety, possessing all the attributes of an exhibition variety. The flower has almost the same formation as the old favorite "Insulinde" but the color is more beautiful. The stems are strong and stiff and the foliage is thick in texture, and very resistant to the attacks of insects. The flowers are large and very freely produced. Extra strong, field-grown tuber, \$3. Extra strong, well-rooted, pot-grown plant, \$1.50.

JERSEY'S METEOR (*Formal Decorative*). A strong and vigorous grower, the color of which is a light salmon-orange. Strong, robust foliage and a splendid exhibition flower of practically a new color shade. Good strong stem holding bloom erect. Extra strong, field-

grown tuber, \$10. Extra strong, well-rooted, pot-grown plant, \$5.

JERSEY'S TRIUMPH (*Decorative*). This Dahlia is a seedling with the same parents as Jersey's Beauty and is identical with it in habit of growth, so much so, that they can not be distinguished apart before they bloom. The color is different and is a real autumn shade of bright copper flushed with salmon-bronze. We predict a great future for this variety as a cut flower. Extra strong, field-grown tuber, \$7.50. Extra strong, well-rooted, pot-grown plant, \$3.75.

KATHLEEN NORRIS (*Decorative*). The most sensational Dahlia of the 1928 season. A bloom of gigantic proportions of a true rose-pink, later deepening to mallow-pink, but paler in the young central petals. Broad overlapping petals with twisted ends, filled to the center. The first two leaves on the thick stem are 14 inches from the flower, one can easily visualize what an exhibition variety this is. Foliage dark green and leathery, positively insect proof. Great bloomer and excellent keeper. Extra strong, field-grown tuber, \$10. Extra strong, well-rooted, pot-grown plant, \$5.

KATHERINE COLE (*Decorative*). At the last New York show this beautiful Dahlia was exhibited under number, and won the prize for the best keeping variety. In color it is a beautiful combination of light pink and cream. Imagine an "Eagle Rock Beauty" on a "Jersey's Beauty" stem; this would give you a fair idea of the beauty of this flower. The foliage is thick and leathery. Stock very limited. Extra strong, field-grown tuber, \$10. Extra strong, well-rooted, pot-grown plant, \$5.

MABLE S. DOUGLAS (*Informal Decorative*). This is one of the largest of the new Dahlias and came near being the sensation of the New York show, where it won first in one of the seedling classes. In color it is a clear pastel lavender. Its large flower might easily make

it popular for the largest bloom classes, as it is one of the flowers that will measure much larger than it looks, on account of the graceful curl of the long petals. Exceptionally good and the foliage and habit of growth are excellent. Extra strong, field-grown tuber, \$10. Extra strong, well-rooted, pot-grown plant, \$5.

META SCAMELL (*Informal Decorative*). This variety classed as a Hybrid Cactus when introduced is nearer a Decorative in our estimation. The flowers are large, pale amaranth-pink in color, petals twisted at the end, which gives the flower a pleasing formation. Extra strong, field-grown tuber, \$5. Extra strong, well-rooted, pot-grown plant, \$2.50.

SHAWNEE'S PEACH (*Decorative*). The flowers are gigantic, easily attaining 10 inches. Color is a ripe Georgia Peach. Extra strong, field-grown tuber, \$15. Extra strong, well-rooted, pot-grown plant, \$7.50.

SHAWNEE'S SUNBURST (*Decorative*). The color of the Dahlia is a blending of red, orange and yellow. The stems are excellent and it is a free bloomer. Extra strong, field-grown tuber, \$6. Extra strong, well-rooted, pot-grown plant, \$3.

SPIRIT OF ST. LOUIS (*Decorative*). The flowers of this Dahlia are large and may be described as American Beauty rose in color. Plants are medium in height and the stems strong and well able to hold the large flowers erect. Extra strong, field-grown tuber, \$5. Extra strong, well-rooted, pot-grown plant, \$2.50.

TARRYTOWN (*Decorative*). An exquisite bronze, shading a little darker towards the edges of large broad petals, a truly Decorative variety, an excellent grower with leathery foliage, strong stems, which hold the flowers up straight. Extra strong, field-grown tuber, \$7.50. Extra strong, well-rooted, pot-grown plant, \$3.75.

TREASURE ISLAND (*Formal Decorative*). This is one of the brightest and best of the Autumn shades, the

color being apricot with gold and rose suffusion. The habit of the plant is ideal, being strong and vigorous and the stems perfect. Extra strong, field-grown tuber, \$5. Extra strong, well-rooted, pot-grown plant, \$2.50.

WALDHEIM SUNSHINE (*Hybrid Decorative*). This giant Dahlia is one of the very best Hybrid Decoratives. A true deep yellow that will show up yellow under artificial light. The reflex is darker and there is rich golden suffusion around the beautiful, full high center. The bush growth is ideal, the strong erect stems hold the flowers facing upright. Extra strong field-grown tuber, \$5. Extra strong, well-rooted, pot-grown plant, \$2.50.

WATCHUNG SUNRISE (*Decorative*). Originator's description: "Strong, healthy plant, carrying its golden blooms suffused with pink, far above the perfect green foliage. A profuse bloomer and particularly early. I have yet to see an unhealthy plant of Watchung Sunrise." Awarded gold medal, American Dahlia Society, 1927. Extra strong, field-grown tuber, \$5. Extra strong, well-rooted, pot-grown plant, \$2.50.

WATCHUNG WONDER (*Decorative*). This spectacular Dahlia created a sensation at recent shows. Royal-scarlet with a touch of gold at center of flower, with now and then a tiny petaloid of gold to enhance its beauty. Extra strong, field-grown tuber, \$10. Extra strong, well-rooted, pot-grown plant, \$5.

YELLOW BEAUTY (*Decorative*). A seedling of Jersey's Beauty, having the same splendid stem, perfect form and habit of growth, the color being a pure empire-yellow. We believe that "Yellow Beauty" will become as famous in the Yellow class as its parent became in the Pink. Extra strong, field-grown tuber, \$5. Extra strong, well-rooted, pot-grown plant, \$2.50.

LILIES

Beautiful Lilies

For Garden and Woodland

When the yellow lily flowers in the meadows, and the red, in dry land and by wood paths, then, methinks, the flowering season has reached its height.—THOREAU

SO that you may succeed with these inspiring plants and to obviate disappointments, we offer of the host of varieties, the limited few that will succeed in American Gardens under ordinary care, selected after many years of experimenting and careful study.

NO VARIETIES OTHER THAN THOSE APPEARING IN THIS LIST SHOULD BE PLANTED IN SPRING

There are many other exquisite kinds with which we succeed, but they should *only* be planted in the *autumn*.

For full description of these please consult our book entitled "Beauty From Bulbs," May Edition.

Lilium Auratum

AURATUM WILD COLLECTED BULBS. While in so many gardens *Lilium Auratum* does exceedingly well, even with a degree of permanency, in some gardens it seems capricious in its nature and some do not seem to have good success with it.

To those of you who have had this experience we would suggest that you try our WILD COLLECTED BULBS and plant them in deep soil. These collected bulbs, as different from the "Cultivated Bulbs" generally offered, seem to succeed remarkably well and produce good heads of flowers on strong spikes the first season after planting. They are particularly desirable for mass effects, or distributed through the shrubbery or perennial borders.



LILIUM AURATUM PLATYPHYLLUM



They are collected in the Mountain Regions of Japan in their native habitat. We suggest the planting of these WILD COLLECTED BULBS in closely set clumps, the beds somewhat raised and protected with wire of a quarter inch mesh against moles and their followers, the field mice. This close planting causes a natural shading of the young shoots.

We offer these WILD COLLECTED BULBS at \$39.75 per 100.

AURATUM. The white, golden-rayed, crimson-spotted Lily. Special stock, \$12 for 10; \$26 for case of 25; \$49 for case of 50; \$98 per 100. A smaller size bulb; \$6 for 10; \$56 per 100.

AURATUM MACRANTHUM (*Platyphyllum*). This is a robust growing form; the stem is stout and attains a great height; the leaves are broad and of wonderful texture; the blooms are always large and often exceed 12 inches in width; enormous flowers, white, richly spotted yellow. Undoubtedly the choicest and hardiest of all, and in our opinion, superior to the type, of grand, sturdy, thriving habit, and wonderful foliage. We have no hesitation in calling it the King of Lillies. Special stock, \$12 for 10; \$26 per case of 25; \$49 per case of 50; \$98 per 100. A smaller size bulb of high quality, \$8 for 10; \$76 per 100.

LILIUM BAKERIANUM (*Syn. Lowii*). A rare and exquisite Lily from upper Burma, very scarce in cultivation. It bears pendulous almost bell-shaped flowers, creamy white ribbed with delicate green and more or less spotted with crimson in the throat. The ends of the petals reflex most gracefully. Flowers are 3 inches long, 3½ inches wide at the mouth and are borne 2 to 4 on a stem. Height 3 to 4 feet. This Lily will do exceedingly well for summer culture, however, bulbs must be taken up and stored in a frost-proof place for the winter. Stem rooting. June-July flowering. Extra heavy bulbs. Each, \$4; \$38 for 10.

BATEMANNIÆ. Clear glowing apricot flowers, from 3 to 4 inches in diameter, on stems about 3 feet high, borne from four to six in a terminal umbel or cluster; free of spots; is at its best early in August. Extra selected bulbs, \$6 for 10; \$55 per 100.

ELEGANS ALICE WILSON. Dwarf Japanese Lily having large upright cup shaped flowers of a clear lemon-yellow shade; thrives in ordinary garden soil, preferring light loam, peat and leaf mold. Splendid for rock gardens and for naturalizing. Stem roots; plant 8 or 9 inches deep in sunny situation among dwarf shrubs or Funkia; June flowering. Extra heavy bulbs, \$4.50 for 10; \$42.50 per 100.

ELEGANS IN VARIETY. The number of forms and varieties is legion, varying in color from pale lemon-yellow to rich orange-brown, embracing various tints of orange to almost red and from soft apricot to approaching crimson; varying also in flowering season; a copious planting of these in mixture through a colony of Funkia or in the border, produces a most effective display, continuous for a considerable period. Stem-roots; plant 8 or 9 inches deep, in sunny situation; June-July flowering. Extra selected bulbs, \$4 for 10; \$38 per 100.

HENRYI. An invaluable garden plant, vigorous in its growth, failing but very seldom. One of the best border Lilies, reaching over 8 feet and more in height when established, and bearing more than twenty flowers of a rich, deep, orange-yellow. Fine foliage. Does well in both light and heavy loam, but prefers soil with a mixture of peat. Plant very deep, 10 inches. A partially shaded place, sheltered from high winds, suits it best. It is a beautiful Lily to grow under glass, where it has produced flowers measuring over 8 inches in diameter. Stem-roots. August-September flowering. Special stock, \$10 for 10; \$24 for

case of 25; \$47 for case of 50; \$92 per 100. A smaller size, good flowering bulb may be had at \$6.50 for 10; \$62.50 per 100.

Every year we have a few exceedingly large specimen bulbs which we offer in limited number at \$32.50 for case of 25; \$63 for case of 50.

JAPONICUM (*formerly listed as Kramerii*). This is one of the few pink Lilies of our gardens, and a very lovely thing it is. The flowers are carried horizontally on stems 3 feet high. Somewhat capricious in its requirements. The soil generally advised for it is a light loam, but an amateur who grows Lilies with great success says that the color is finest in peat. It is a Lily so beautiful and of a color so lovely and unusual that it is worth taking pains with. It roots from the stem as well as from the bulb, and therefore should be planted rather deep, fully eight inches. It has been known to give as many as seven blooms to a stem, though one and two flowers to a stem the first year is usual. The funnel-shaped, finely formed flowers are six inches or more in length, and as much across, of a beautiful clear pink color, often shaded blush. Extra selected bulbs, \$5.50 for 10; \$52.50 per 100.

REGALE (*The Regal or Royal Lily*). One of the most beautiful, and one of the hardiest Lilies in cultivation — "Lilium Regale" is truly a royal Lily, worthy of a place in every garden; it is a lover of loam and sunshine.

A vigorous grower with sturdy stems, 4 to 6 feet high, densely covered with long, linear-lanceolate foliage. Center of flower flushed with yellow, shading to white at the outer edges; externally the flowers are streaked with brown on the "ribs," shaded through the almost translucent petals with a delightful pearly tint; the contrast between the rich wine color of the reverse of the petals and the gold shading of the throat is extraordinarily beautiful.

The Regal Lily is very floriferous and, when thoroughly established, bears as high as eighteen and twenty flowers during the season. Like most all other Lilies, especially the stem-rooting varieties, they should be planted deep—at least 9 inches, should have good drainage, and when growing they should be watered copiously with liquid manure as they are gross feeders. They succeed in any good rich garden soil.

In the herbaceous border, planted in clumps of 5 to 25 bulbs, they are especially attractive among the Delphiniums and other July flowering perennials. Where these magnificent Lilies are planted in quantity, the air in the cool of the morning and in the evening is laden with delicious perfume, exhaled from every blossom. On account of the great demand for bulbs of Regale Lilies, millions have been grown from seed and consequently many inferior types are produced.

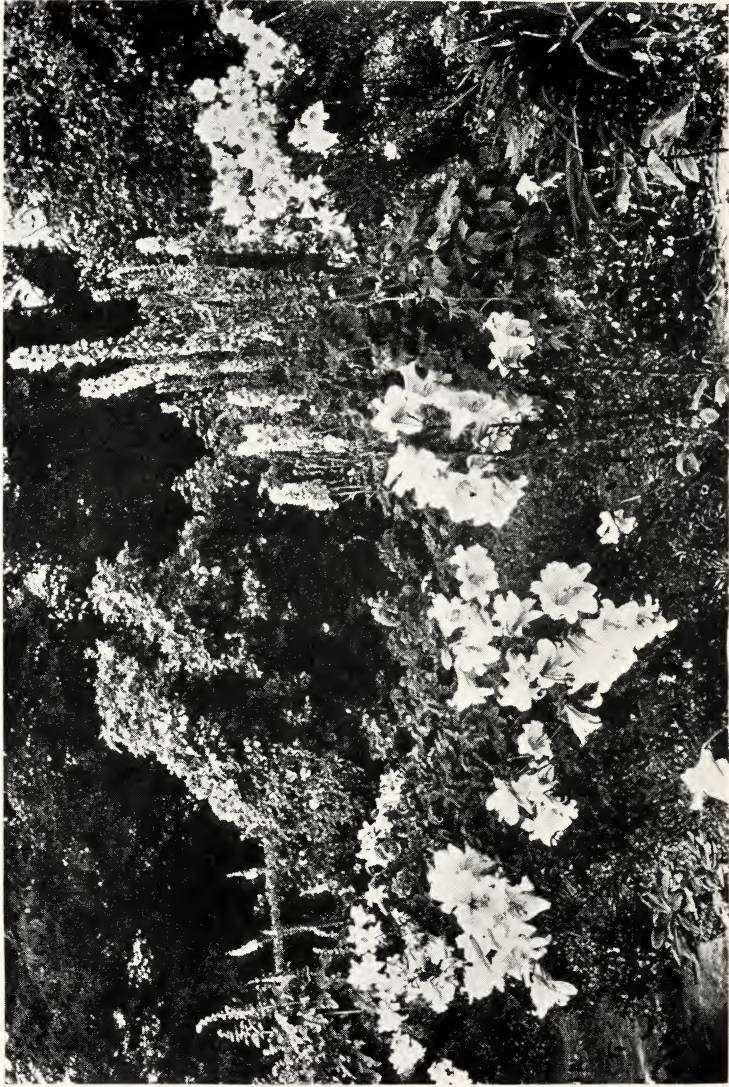
We grow our own Regal Lilies carefully selected as to finest type. Extra heavy bulbs, \$10 for 10; \$98 per 100. Every spring we have a few hundred enormous bulbs which we offer at \$16 for 10; \$157.50 per 100.

RUBELLUM. A beautiful Japanese Alpine species, somewhat like a small *Lilium Japonicum*, but with a much better constitution; it flowers the end of May, bearing one to four flowers of a beautiful clear rosy-pink, both inside and out; anthers are orange-yellow; sweet-scented. It thrives best planted among the roots of low-growing shrubs. Also a most suitable Lily for rock garden culture. Extra selected bulbs, \$5.50 for 10; \$52.50 per 100.

SPECIOSUM. Originally a native of Korea, deservedly one of the greatest favorites as a border plant, of daring as well as beautiful form. The petals are well rolled back and are handsomely spotted, often branded with distinct color. The style is thrown out in a curved line of much grace and strength. The stamens boldly diverge from it. The anthers are conspicuous



LILIUM REGALE



LILIAM REGALE WITH DELPHINIUMS

for their size and color and extremely delicate poise. In addition to all these attractive qualities it has a strongly waved outline to the petals, which adds much to its beauty. It flowers through the late Summer into Autumn. To see the plants growing impresses one with a feeling of vigor and well being. Must be planted deep, because it forms an unusually strong mass of stem-roots.

The cultivation of this Lily lays no great tax on the resources or ingenuity of the planter, and its requirements once understood, it may be relied upon to prosper, sending up its flowering stems year after year in increasing numbers; while *Speciosum* will grow in limy soil, there can be no doubt that it is more at home in ground that is free from lime, and it may be grown to perfection in a rich, open, woodland soil overlying a stiff, sandy loam, into which its long roots can wander as they please.

On the richness of the top-soil depends the growth of the stem and flowers, and it is no exaggeration to say that one cannot mulch this Lily too much.

It opens its flowers so late in the season that it is probably best to plant *Lilium Speciosum* in full sunshine. Plant 10 or 12 inches deep, possibly among ground shading shrubs making sure as to drainage.

SPECIOSUM ALBUM KRÆTZERI. This true variety as offered by us is very scarce. Beautiful, snow-white flowers with a golden green stripe through the center of each petal, and anthers of a coppery tint. Alike in the form of flower and in the way of growing, this Lily is one of the most beautiful we have. We believe there is no other Lily that has such purity of color. Stem-roots, August flowering. Extra selected bulbs, \$15 for 10; \$145 per 100.

SPECIOSUM ALBUM NOVUM. This form is distinct from the "Krætzeri." Flowers are large of the purest white with beautiful golden-yellow anthers. Stem-

roots. August flowering. Extra selected bulbs, \$10 for 10; \$24 for case of 25; \$47 for case of 50; \$92 per 100. Smaller, good flowering bulbs, \$55 per 100.

SPECIOSUM MAGNIFICUM. Rich ruby-carmine, margined white; stout of substance and broad of petal. This variety stands out prominently on account of its vigorous growth as well as the size and depth of coloring of the blooms. Stem-roots, August flowering. Special stock, \$11 for 10; \$25 for case of 25; \$49 for case of 50; \$98 for case of 100. A smaller, high quality bulb, \$55 per 100.

Every year we receive a limited number of exceedingly large specimen bulbs, one of which will produce several strong flowering spikes. We offer them at \$14 for 10; \$32.50 for case of 25; \$62.50 for 50.

SPECIOSUM MELPOMENE. The delicate beauty of the lighter colored flowers makes this variety most desirable. Deep carmine-crimson, intensified by a narrow margin of white. Stem-roots, August flowering. Special stock, \$11 for 10; \$25 for case of 25; \$49 for case of 50; \$98 for case of 100. A smaller, high quality bulb, \$55 per 100.

Every year we receive a limited number of exceedingly large specimen bulbs, one of which will produce several strong flowering spikes. We offer them at \$14 for 10; \$32.50 for case of 25; \$62.50 for 50.

SULPHUREUM. (*Also called Wallichianum var. superbum*). A magnificent Lily from upper Burma, very amenable to cultivation. With ordinary care and attention it will flower year after year. In our northern sections it had better be grown in deep pots, where it will attain a height of six feet and more, plunging the pots out of doors or in frames for blooming in late summer and autumn. The trumpet shaped flowers 9 inches long, of great substance and deliciously fragrant, are creamy white with a flushed rose tinge on



LILIUM SPECIOSUM MELPOMENE



the outside; the interior is suffused with rich yellow. It seems difficult to convey a suggestion as to the beauty and delicacy of this rare and beautiful Lily. The latest to flower outside, often later than September. Stem-roots. Extra selected bulbs, \$3.50 each; \$35 for 10. A smaller, high quality bulb, \$2 each; \$18 for 10; \$175 per 100.

TIGRINUM SPLENDENS. The finest form of Tiger Lily with the richest color. The large shapely flowers are of a rich dark salmon-orange spotted with glossy black. This Lily is very robust in habit and of easy culture. Stem-roots; late fall or early spring planting, 10 inches deep; August-September flowering. Extra selected bulbs, \$4 for 10, \$35 per 100. A smaller, good flowering bulb, \$3 for 10; \$25 per 100. Every year we receive a limited number of exceedingly large specimen bulbs. We offer them at \$23 per case of 25; \$45 per case of 50; \$85 per case of 100.

TIGRINUM FLORE PLENO. The double form. The only example of a double Lily we have. Extra selected bulbs, \$4 for 10; \$35. per 100.

Lilies in Pots for Special Occasions or for Filling in the Garden

We grow at our Experimental Station in Brookville, L. I., a complete assortment of Lilies in pots, covering varieties which we do not recommend for Spring planting and also such varieties as we usually receive too late from abroad for outdoor planting in fall, and others.

It is felt that by making these arrangements we are supplying a long felt demand.

These Lilies can be used for plunging into available spaces in the garden, or for some special occasions, such as garden parties, weddings, etc., where the addition of these is desirable. The growing plants can be furnished in any stage of their growth or in bud or full bloom

for immediate effect. The following varieties of Lilies can be supplied: *Lilium Auratum*, *Lilium Batemanniaë*, *Lilium Candidum*, *Lilium Hansonii*, *Lilium Henryi*, *Lilium Japonicum*, *Lilium Regale*, *Lilium Speciosum Album*, *Lilium Speciosum Magnificum*, *Lilium Speciosum Melpomene*, *Lilium Sulphureum*, *Lilium Tenuifolium*, *Lilium Testaceum*, *Lilium Umbellatum*.

Owing to the perishable nature of this material, it can only be delivered within easy trucking distance of New York, as shipping by express might cause damage to the growing plants.

Advise us as to your special requirements and we will gladly quote prices.



*"All still and Lily-scented,
The garden seemed to say:
'Oh, weary one, come, enter
And cast your cares away.'
For tall and white the Lilies
Like guardian angels stood,
To ward away the evil
And encompass the good.
To turn away thoughts world-wise,
To want and see and hear
The God-like, silent message
Of things that bless and cheer."*

—LYMAN



Our Trade Mark "SSS" appearing on
our cases of Lily bulbs stands for
"SCHEEPERS' SPECIAL STOCK"

JAPANESE IRISES

New Japanese Irises

American Collection

The following beautiful Japanese Irises are remarkable for their dissimilarity and should be in every garden. They are American seedlings of exceptional merit. No two alike.

AGNES REED. Single. Falls—mulberry-purple with halo of royal purple. Standards—hematoxin-violet shading lighter at base. Each, \$1.50; \$12.50 for 10.

BETTIE F. HOLMES. Double. Beautiful variety of exquisite form. Very large pure white. We consider this the best white Japanese Iris. Limited Stock. Our introduction. Each, \$2; \$17.50 for 10.

BETTY JEAN CHILDS. Single. White faintly splashed and veined Phlox-purple or the new beautiful shade of Orchid color; petaloids deeper shade. Each, \$1.50; \$12.50 for 10.

CATHERINE PARRY. Double. Blue overlaid rose-red, high tufts in center; almost triple. Each, \$1.25; \$10 for 10.

CHUTSAI. Single. Hortense violet, beautifully veined white, inner petals being a delightful phlox-purple. A beautiful novelty. Each, \$1.50; \$12.50 for 10.

CLARICE CHILDS. Single. Petunia-violet, conspicuous yellow center surrounded with blue cast. Large. Each, \$1.50; \$12.50 for 10.

DAISY HERRINGTON. Single. Pinkish-blue, veined purple. Each, \$1.50; \$12.50 for 10.

DORIS CHILDS. Double. Pearl-white deeply veined rosy plum. Center petals deep plum edged white. Each, \$1.50; \$12.50 for 10.

ELEANORE PARRY. Double. Claret-red, flamed white and blue. Compact medium size flower. Each, \$1.50; \$12.50 for 10.

FANNY HAMLET CHILDS. Double. Violet-purple, mottled and splashed white. Each, \$1.50; \$12.50 for 10.

FASCINATION. Double. Blue lightly veined white, pink tinge. Each, \$1.50; \$12.50 for 10.

FRANCES E. CLEVELAND. Semi-double. Blue, very large. Each, \$1.50; \$12.50 for 10.

JEANETTE PARRY. Single. White suffused with lines of bluish violet, petaloid stigmas amethyst-violet. Each, \$1.25; \$10 for 10.

JOHN LEWIS CHILDS, 2ND. Single. White lightly veined blue. High center petals delicate mauve and blue. Each, \$1.50; \$12.50 for 10.

JOSEPHINE HEYWOOD. Single. Blue with purple sheen. Anyone fond of this shade will like this variety. It is the favorite color of the mother of Mrs. Scheepers and was therefore named after her. Each, \$1.50; \$12.50 for 10.

KHA KHAN. Single. An outstanding introduction. The very large flowers are white, suffused blue, with purple stigmas. Each, \$1.50; \$12.50 for 10.

MARJORIE PARRY. Double. Delicate light mauve, tufted center, extra fine. Each, \$1.50; \$12.50 for 10.

MRS. J. ALEXANDER HAYDEN. Double. White ground edged and shaded pale violet. Stigmas white slightly edged and tipped pale violet. Each, \$1.25; \$10 for 10.

PAINTED LADY. Single. This variety is indeed well named. Very unusual color. No stripes or pencilings as in other bicolors, but a fine white overlaid light phlox purple, fading to almost white with age. Each, \$1.50; \$12.50 for 10.

ROSE HEYWOOD SCHEEPERS. Double. Mauve-gray, overlaid blue. Each, \$1.50; \$12.50 for 10.

SUBOTAL. Single. A very beautiful and outstanding variety of a very refined rosy-red. Each, \$1.50; \$12.50 for 10.

VIOLET HERRINGTON. Double. Bradley's violet, white veins, tufted center. Large dwarf. Each, \$1.50; \$12.50 for 10.

Collection of one of each of the preceding 22 varieties for \$30.



*"Come into the garden, friend, for we adore it
and wish to share its treasures with thee;
We feel did thee know its secrets and charm,
it would make thy world-worn soul care
free.*

*Ah! friend, keep in time with its melody and
sweet moods, for we assure thee of quiet
influences eyes cannot see,*

*For, friend, a garden close is a place of delight
filled with fragrance and beauty wondrous
lovely.*

*And, friend, at the twilight's holy hush may
your heart, with our hearts, breathe its
perfume in prayer;*

*Beseech we receive its blessing, "that peace which
the world cannot give," nor care,*

*For, friend, a garden is ever the gift and a bene-
diction from God*

*For He, too, found peace at the cool of the eve
as He walked over its dew pearled sod."*

—LYMAN

DELPHINIUMS

Delphiniums

Perennial Hardy Larkspur

*What a desolate place would be a world without a flower!
It would be a face without a smile, a feast without a welcome.
Are not the flowers the stars of earth, and are not our stars the
flowers of Heaven.—MRS. BALFOUR.*

In Separate Named Varieties from the Finest English Sources

ADVANCEMENT. This marks an achievement in Delphinium creation. There is often 5-6 ft. of solid bloom. Colors of striking beauty. Each, \$5.

WATKIN SAMUEL. A group distinguished by enormous tapering spikes, beautiful florets, with striking centers. Each, \$5.

BLUE QUEEN. Azure-blue with blackish brown center. Single. 4 ft. Each, \$1.50.

CLIVE GREAVES. Rich porcelain-blue flowers of good size and form, on a long, tapering spike of imposing stature. Unique and distinct. 5 ft. Each, \$5.

CONSTANCE. A lovely blue single, white eye. Each, \$1.50.

COUNTESS COWLEY. Light blue and mauve, semi-double flowers of wonderfully fine form. Eye is black; magnificent spikes. 5 ft. Each, \$3.

EDWARD BROMET. The purplish blue ground is rich and the white eye extremely large. The individual pips are of enormous size and are well set on massive spikes. 5 ft. Each, \$2.50.

GLORY. Mauve, shaded rose. Stout, sturdy plant with white eye. 4 ft. Each, \$1.50.



WATKIN SAMUEL'S HOLLYHOCK-FLOWERED DELPHINIUMS
OFFERED EXCLUSIVELY BY US

GREAT STRIDES. Pale blue, shaded pinkish mauve. Prominent white eye. Each, \$3.

HAPPY THOUGHT. Medium blue, shaded Pansy-violet. 5 ft. Each, \$3.

LADY BEATRIX STANLEY. An exceptionally rich blue with white eye. Single. A spike of fine form. 4-5 ft. Each, \$1.50.

MARION CRAN. A pale azure-blue. Single. Distinct black eye. Each, \$1.50.

MILLICENT BLACKMORE. A lovely variety. Spikes are of perfect form, pips very large and splendidly placed. Blue and mauve with large black center. Each, \$2.50.

MRS. A. J. WATSON. Deep mauve shade with black center, enormous spikes. 7 ft. Each, \$2.

MRS. NORMAN HOLDEN. Large semi-double flowers of mauve and blue with large black eye. A splendid variety. 5 ft. Each, \$3.

MRS. SHIRLEY. Beautiful variety. Lovely lilac-mauve. White and sulphur eye. 5-6 ft. Each, \$2.

MRS. TOWNLEY PARKER. Sky-blue single. White eye. Each, \$1.50.

NORAH PHILLIPS. A gorgeous effect of deep blue and purple florets on a tapering spike of 6 feet. Each, \$5.

R. A. PILKERTON. Extra large, well formed, semi-double flowers. Color, rich violet, edged dark blue. Eye is brown and spike well formed. 5 ft. Each, \$3.

THE BISHOP. Bright royal blue, large and conspicuous white center. An outstanding variety. 5 ft. Each, \$3.

THE SHAH. A deep rosy lavender self with dark eye. Large semi-double flowers are circular in form and consist of several rows of petals. Spikes extra long and finely proportioned. 5 ft. Each, \$3.

CHOICEST SEEDLINGS FROM MR. WATKIN SAMUEL'S
FAMOUS "WREXHAM" OR OFTEN CALLED
"HOLLYHOCK" DELPHINIUMS OF
WHICH WE ARE THE EXCLUSIVE
INTRODUCERS

WATKIN SAMUEL SELECTED VARIETIES. Strong field-grown clumps. \$3.50 each; \$38 per dozen.

During the flowering season these wonderful Watkin Samuel Wrexham Delphinium Hybrids may be seen in their full magnificence in our new display gardens in Brookville, Long Island, where selections of individual varieties may be made. Upon request we shall be glad to send privilege cards admitting correspondents and their friends to visit these gardens.

Delphiniums of Other Superb Strains

For many years we have also been experimenting with the finest productions from such famous European and other Specialists as Blackmore & Langdon of Bath, England, and other world famous growers.

As the result of most careful selection we have a strain of Hybrid Delphiniums which we list under the name of *Superior English Hybrids* and which we consider the finest available, next best to the celebrated Watkin Samuel strain.

The varieties are of exceptional merit; during the flowering season they are expertly examined and studied, only the best retained, selected as to form and color, and the balance discarded. This best stock we have decided to offer under the title of:

SUPERIOR ENGLISH HYBRIDS. \$1.50 each; \$15 per dozen;
\$100 per 100 extra strong, field-grown clumps, young,
healthy, clean stock.

Delphinium Bella Donna

(Pfitzer's Improved Strain)

The flowers of this hardy Larkspur are posed like a sky-blue butterfly on a slender stiff stem away from the main stalk. They are of an exquisite, heavenly turquoise-blue.

The habit of growth of this plant is very graceful. Planted with Lilies such as the Madonna Lilies, or in front of the much taller and formal Delphinium Hybrids, they create a most lovely effect.

One of our best blue cut flowers, perfectly hardy, and established plants produce a number of spikes, giving three crops during the season. The true, unmixed variety. Extra heavy clumps, \$7.50 for 10; \$65 per 100.



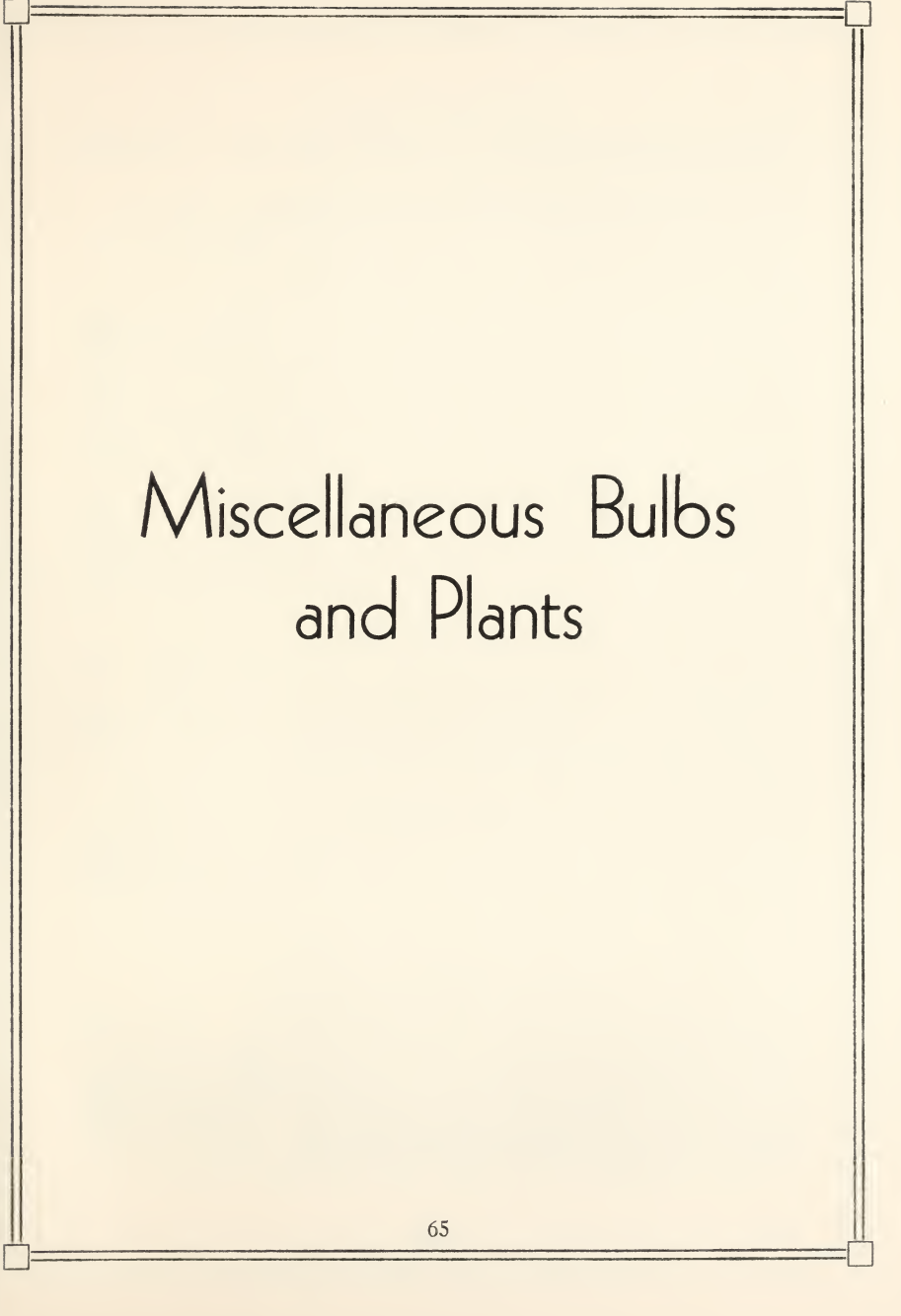
Seed

As a rule we do not sell seed of any kind; but due to the great demand for these choice plants and the limited stock available, we distribute packages of seed collected by Mr. Watkin Samuel from his finest Exhibition plants in his private garden in Wrexham, Wales.

The price of this finest of all handpicked Delphinium seed is \$6 per package of hundred seeds. It is respectfully urged that reservations be made at the earliest possible.

*Once in a garden sweet and fair
I rid myself one day of care;
I tossed it from me beyond the wall,
Afar from sight and beck and call.
For I could not endure the thing
When all the clove was blossoming;
So God be thanked it came to me
In that quick way to set me free
And life is different as I go
About the house and garden row,
For care's away, and I am free
To be with things best loved by me.*

—LYMAN.



Miscellaneous Bulbs and Plants

Miscellaneous Bulbs and Plants

How the universal heart of man blesses flowers. They are wreathed round the cradle, the marriage altar and the tomb.

—MRS. CHILD.

English Tuberous Rooted Begonias

Our Begonias have been carefully selected at flowering time. They can be supplied in separate colors or mixed and are well adapted for either pot culture or bedding.

SUPERB SELECTED SINGLE BEGONIAS. Colors, white, pink, rose, carlet, yellow, orange and salmon. Extra selected tubers, \$6 for 10; \$55 per 100.

SUPERB SELECTED DOUBLE BEGONIAS. Colors, white, pink, rose, scarlet, yellow, orange and salmon. Extra selected tubers, \$6 for 10; \$55 per 100.

Caladiums

ESCULENTUM (*Elephant's Ear*). Heaviest bulbs. \$6 for 10.

For Fancy Leaved Brazilian Caladiums please consult our Forcing Bulb Division of this book.

Calla Lillies

ELLIOTTIANA (*The Golden Yellow Calla*). Extra large bulbs, 3 inches and over, \$7.50 for 10; \$68 per 100.

Dicentra Spectabilis

(*Syn. Dielytra spectabilis*)

The "Lyre Flower," "Bleeding Heart," or "Locks and Keys." A very graceful pot-plant for room decoration, and valuable for cutting. The elegant pendant branches are loaded with heart shaped bright rose colored flowers, and furnished with graceful delicate green foliage. Extra heavy clumps. \$9 for 10; \$85 per 100.

Galtonia Candicans

(Hyacinthus candicans)

The Cape Hyacinth is a valuable summer flowering bulb with long slender leaves and a candelabra like arrangement of thirty or so pure white bell shaped blossoms borne on a scape from 3 to 4 feet tall. Distributed about the borders in groups or massed against shrubbery they are very effective, giving lines of definition and strength to the riotous growth of summer flowers. Planted with Gladioli they form an elegant contrast. They last a long time in bloom.

In every way they may be treated like Gladioli, but south of Philadelphia the bulbs may be left out of doors over the winter with a light covering and will increase and give better results every year. Extra selected bulbs, \$2 for 10; \$15 per 100.

Ismene Calathina

(Peruvian Daffodil)

One of the best of our summer flowering bulbs, bearing clusters of large, fragrant Lily-white flowers resembling an Amaryllis. Extra selected bulbs, \$4.50 for 10; \$40 per 100.

Tigridia Pavonia Hybrids

Known also as the "Tiger" or "Shell Flower," few garden or conservatory plants can compare with them for brilliancy. Colors vary from yellow and white to brilliant scarlet; all being deeply blotched and speckled with crimson and maroon. \$2.75 for 10; \$25 per 100.

Tritoma

TRITOMA PFITZERII (*Red Hot Poker or Torch Lily*).

Splendid for late summer and early fall, producing plants from 3 to 4 feet high, bearing flower spikes of a rich orange-scarlet shading; very effective. \$3.50 for 10; \$30 per 100.

TRITOMA RUFA. A very dainty yellow flower. A constant bloomer from June until frost. I should like to say that I consider this one of the most valuable plants in the garden. It lights up the perennial border with its three feet high, artistically formed, airy, dainty light yellow flowers, appearing again and again from summer until late fall. I do not see how any garden can be complete without it. Very fine for cutting. \$5.50 for 10; \$50 per 100.

TRITOMA HYBRIDS. A new strain of hybrids, ranging from straw white through various yellow and orange shades. They bloom continuously from early Summer until frost. \$5.50 for 10; \$50 per 100.

Tuberoses

DOUBLE PEARL. Extra large bulbs, size 8 inches. \$2 for 10; \$15 per 100.

MEXICAN SINGLE EVERBLOOMING. Flowers from July until late Fall. \$1.50 for 10; \$12 per 100.

ZEPHYRANTHES ATAMASCO. The true "Zephyr Lily." Very attractive, pure white flowers. \$1.25 for 10; \$10 per 100.

ZEPHYRANTHES CARINATA (*Rosea*). Soft rose-pink with white center, very beautiful. \$1.75 for 10; \$15 per 100.



GOLD MEDAL OFFERED BY
HER MAJESTY, QUEEN WILHELMINA OF THE NETHERLANDS
AWARDED TO
JOHN SCHEEPERS, INC.



Gold Medal

OFFERED BY PRESIDENT COOLIDGE FOR HORTICULTURAL

ACHIEVEMENT

AWARDED TO JOHN SCHEEPERS, INC.

RARE AND CHOICE BULBS AND ROOTS
FOR GROWING UNDER GLASS,
IN WINTER GARDENS OR LATH HOUSES

THE finest specialties for forcing for exhibition purposes, for general use indoors, for late fall, winter and spring flowering, and for growing in Southern sections out of doors or in lath houses.



*For me there is no rare thing
Than while the winter's lingering
To taste the blessedness of spring.*

—CHARLOTTE FISKE BATES

*The Lord God planted a garden
In the first white days of the world,
And He set there an angel warden
In a garment of light unfurled.*

*So near to the peace of Heaven,
That the hawk might nest with the wren,
For there in the cool of the even
God walked with the first of men.*

*And I dream that these garden-closes
With their shade and their sun-flecked sod
And their lilies and bowers of roses,
Were laid by the hand of God.*

*The kiss of the sun for pardon,
The song of the birds for mirth,—
One is nearer God's heart in a garden
Than anywhere else on earth.*

—DOROTHY FRANCES GURNEY

*Rare and Choice Bulbs and Roots
for growing under Glass,
in Winter Gardens or Lath Houses*

Achimenes

A charming family of plants with brilliantly colored elegant flowers making a very pleasing decoration in the greenhouse from early summer onwards. May be grown in pots or hanging baskets. Pot in rich light soil in spring (10 bulbs to a 5 inch pot) and plunge in gentle bottom heat. Eleven fine named varieties. \$15 per 100.

Agapanthus Umbellatus

(Blue Lily of the Nile)

These "African Lilies" are favorite plants for the cool conservatory or the terrace garden, but their handsome foliage and large heads of blue flowers deserve a much wider use. Fine ornamental plant, producing, when established, clusters of from twenty to thirty bright blue flowers carried on long stalks.

Established plants in tubs, \$15.00 to \$50.00 each.

Amaryllis Hippeastrum

We are offering a strain of Hybrids grown in Southern California producing flowers of surpassing beauty. They are the result of hybridizing between the finest types, extending over a period of many years. They range in color from the pure white ground color with its markings of rose, red, etc., to rich orange, scarlet, cherry, bright red, crimson, maroon, mottled, striped, etc. The flowers are of enormous size. For the spring exhibitions, or for house and conservatory decoration they are invaluable.

We offer extra heavy flowering bulbs of this Special Strain at \$18.00 for 10; \$175.00 per 100.

EXHIBITION VARIETIES, from \$5 to \$25 each.

Anemones

ST. BRIGID. A very lovely and distinct strain, of graceful habit and producing large flowers mostly semi-double with finely divided petals, of the most brilliant colors, all showing a handsome blue-back central blotch; greatly prized for cutting. These Anemones like a cool and not too dry soil. Splendid Mixed Seedlings, containing rich and brilliant colors. \$10 per 100.

DE CÆN. The single-flowering strain covering a wide range of brilliant colors. \$10 per 100.

SUPERIOR MIXTURE. We consider this the finest strain of single flowering Anemones as yet raised. The plants are taller in growth than the St. Brigid and more single. They contain many fine shades of blue, white, and scarlet. \$12 per 100.

Begonias

Tuberous-Rooted Begonias for Hanging Baskets
for summer and fall flowering

For finest effect we suggest that you plant three tubers of one variety to each basket; use natural leaf-mould; water frequently with a fine rose spray. Protect against sun and draft.

Collection of finest named varieties. \$30.00 for 10; \$295.00 per 100.

Mixed Seedlings in harmonious color shades. \$6.25 for 10; \$60 per 100.

Tuberous-Rooted Begonias for fall and winter
flowering

Collection of finest named varieties. \$35.00 for 10; \$345.00 per 100.

Caladiums

(Fancy-leaved Brazilian)

There is an increased demand for these plants, so easy to grow and so valuable and useful for decorative work.

For conservatory use during the Summer, they are peerless. For best results, we suggest that the bulbs be started in flats containing a mixture of leafmould and sand, in a temperature of 65 to 70 degrees. After the roots have formed they can be transplanted into suitable pots. Would suggest that the first leaves be cut back, as this will tend to produce a more compact and bushy plant.

Our collection is known to be the finest in existence, from which we offer ten fine named varieties, carefully selected as to color combinations. Extra selected bulbs. \$5 for 10; \$45 per 100.

Callas

These highly decorative plants are becoming increasingly popular.

ÆTHIOPICA (White Calla). Heaviest roots, \$16 for 25; \$30 for 50; \$58 per 100.

ELLIOTTIANA (Golden Yellow Calla). Extra large finest selected corms, \$18 for 25; \$34 for 50; \$68 per 100. Special stock for exhibition, stock limited, \$75 per 100.

GODFREY (Devoniensis). White; smaller flowers than *Æthiopica* but more profuse bloomer. Heaviest roots, \$16 for 25; \$30 for 50; \$58 per 100.

Dicentra Spectabilis (*Dielytra spectabilis*)

The Lyre Flower, Bleeding Heart, or "Locks and Keys." A very graceful pot plant for greenhouse and room decoration, and valuable for cutting. The elegant pendant branches are loaded with heart shaped bright rose-colored flowers, and furnished with graceful delicate green foliage. Extra heavy forcing clumps, \$9 for 10; \$85 per 100.

Retarded stock—extra heavy clumps. \$15 for 10.

Eucharis Amazonica

Eucharis in the Greek means—very grateful; it is at times known as the “Amazon Lily” or the “Star of Bethlehem,” the latter name being also applied to the Ornithogalums.

The variety Amazonica is used for forcing and decorative purposes; the flowers are of a chaste white about four inches across, six pointed, borne upon stems twelve to eighteen inches above the foliage, which is evergreen and handsome at all times. Like the Calla and other old fashioned plants, of recent years it has been regaining popularity, but stock is scarce. Specimen plants, \$3.50 each.

Freesias

White Varieties

ELDER'S GIANT WHITE. This new Freesia was another of our exclusive introductions. Large waxy white flowers of great substance, well over two inches in diameter of pleasing fragrance. A splendid keeper of healthy, upright growth produced on strong stems with bright green foliage.

Greenhouse grown, carefully cured stock, selected by Mr. Elder especially for us as his original introducers:

SIZE NUMBER ONE

Extra large bulbs, \$18 per 100.

SIZE NUMBER TWO

Large bulbs, \$15 per 100.

California field-grown stock, extra large bulbs, size number one, \$12 per 100.

PURITY. Only the Finest Improved Type of this Freesia is offered by us—we give you the choice of three sizes—recommending the medium size bulb as usually the most satisfactory for earliest forcing.

PURITY NUMBER ONE

\$7.50 per 100; \$18 per bag of 250; \$68 per 1,000

PURITY NUMBER TWO

\$6.50 per 100; \$15 per bag of 250; \$58 per 1,000.

PURITY NUMBER THREE

\$5 per 100; \$12 per bag of 250; \$45 per 1,000.

Colored Varieties

BUTTERCUP. Extra fine, large flowering yellow. One of the earliest. \$15 per 100.

DOROTHY SCHEEPERS. Salmon-pink, deepening as it matures; very large wide open flower, tall grower; requires good support and an even temperature with plenty of light. An exceedingly beautiful Freesia. \$25 per 100.

GOLDEN DAFFODIL. This variety is in our opinion the best yellow Freesia and the earliest of all to bloom; may be had in flower easily before Christmas without undue forcing. Extra strong and vigorous grower. It is a deep golden yellow with light bronzy markings on outside. Received highest honors wherever exhibited. \$12 per 100.

JUNE MICHELSON. Fine rose-pink with yellow blotches. Attractive and distinct. Splendid grower. \$10 per 100; \$24 per bag of 250; \$90 per 1,000.

KATHERINE WATKINS. The flower of this variety is not so large but it is the Freesia "Par Excellence" for color. Beautiful salmon-buff; from four to six buds open at one time; grows nearly two feet tall. A great keeper, highly fragrant. A wonderful flower. \$28 per 100.

MARIE LOUISE FISCHER (True). Dark violet-blue, of the shade of the Marie Louise Violet; tall, strong, healthy

grower, making large, wide-open flowers; a very fine variety. There is another variety that has just appeared on the market under the same name, very inferior as to color. We offer exclusively our original true introduction. \$24 per 100.

MENDOTA. Giant yellow; desirable in every way. \$10 per 100.

MRS. MARC PETER. Deep rose-salmon with orange blotches giving a fine color effect; lovely salmon-pink with lively shadings. Special Selected Stock. \$15 per 100.

MRS. CHAS. PIKE. Remarkably fine large white flower, wide open, with a one and one half inch band of reddish lavender running around its edge. Strong grower. Carries from eight to ten buds. Very fragrant. Splendid keeper. \$25 per 100.

WISTARIA. A very fine lavender Freesia, which has created a sensation in European exhibitions. \$25 per 100.

Through the co-operation of our clients, it has been possible for us to carefully study results obtained in the forcing of Freesias in various localities. The consensus of opinion is that best results are obtained from early September plantings. Earlier plantings are not always satisfactory. October and later plantings have proven on the whole very satisfactory although the stems are somewhat shorter. We would recommend that Freesia bulbs be taken from the package immediately upon arrival, laid out on trays and allowed to remain in a dry, airy place for a period of at least two weeks before planting.

NOTE: In some localities the water contains matter injurious to the proper development of the Freesia plant. We recommend the use of rain water.

Fritillaria Imperialis
(*Crown Imperials*)

A very charming group of Lily-like plants. The old fashioned Crown Imperials are a splendid addition to the forcing bulb family. Very effective grown in pots.

MAXIMA. Red. Special Stock for forcing in pots. \$10 for 10; \$25 for 25; \$49 for 50; \$97.50 per 100.

MAXIMA. Golden Yellow. Special Stock for forcing in pots. \$10 for 10; \$97.50 per 100.

Gladioli—Southern Stock
(*For late fall and winter flowering*)

Plant from August first on.

ALICE TIPLADY. Fine large flowering Primulinus; beautiful orange-saffron, wide open flower; many open at one time. \$15 per 100.

E. J. SHAYLOR. Fine deep rose-pink; large ruffled blooms on tall spike. \$15 per 100.

LOS ANGELES. Delicate pink with cerise feathering in throat. Produces several spikes. Good cut flower variety. \$25 per 100.

MRS. F. PENDLETON, JR. Salmon-pink, heavily blotched with blood red in throat. Always a spectacular variety. \$15 per 100.

MRS. FREDERICK C. PETERS. Large rose-lilac with crimson blotch bordered white. \$15 per 100.

SOUVENIR. Large flowers well placed on a tall graceful spike, of a beautiful rich canary yellow. The best yellow of this type. \$15 per 100.

VIRGINIA. Extremely effective, brilliantly colored variety. Large scarlet self color, often called "The Scarlet Princeps." \$15 per 100.

Gladiolus Colvillei

Dwarf early varieties invaluable for pot culture or for growing in boxes for cutting during the winter months and early spring.

APOLLO. Salmon, scarlet blotch, \$9 per 100.

FIERY KNIGHT. Brilliant crimson. \$9 per 100.

PEACHBLOSSOM. Delicate pink, very charming in color and marking. \$9 per 100.

ROSY GEM. Beautiful rosy pink. \$9 per 100.

THE BRIDE. Very lovely pure white, \$9 per 100.

South African Species

TRISTIS. A beautiful species. Novel and pretty for earliest forcing. Very lovely, sweet scented, lemon-yellow flowers on tall, wiry stems. The ideal cut flower. \$18 per 100.

Gloriosas

(The Climbing Lily of South Africa)

This interesting plant should be started in sphagnum moss until growth is observed; then place in its permanent pan in a mixture of leaf mould and sandy soil, using three bulbs to an eight inch pan. Place the bulbs in such a position that the growth will face towards the edge of the pan. Will flower in about four months. This is also a very beautiful plant for outdoors in Southern California and Florida.

ROTHCHILDIANA. Scarlet and gold; a splendid plant for pot culture. \$3.50 each; \$34 for 10.

SUPERBA. Fine crimson and yellow. \$3.50 each; \$34 for 10.



DETAIL IN ONE OF OUR EXHIBITS AT THE INTERNATIONAL FLOWER SHOW
RECEIVED GRAND SWEEPSTAKES AWARD AND GOLD MEDAL



GOLD MEDAL
A RECOGNITION MOST COVETED BY HORTICULTURISTS
AWARDED US FOR MERIT

Gloxineas

AWARDED NUMEROUS GOLD MEDALS

The Gloxinia is one of the most beautiful of all flowering bulbs for greenhouse culture and house decoration. In the hands of the hybridist a race far superior in decorative value to the original tropical American species has been evolved. The large well shaped flowers are held boldly erect, and their velvety texture, brilliant colors and handsome markings are always much admired.

We have been fortunate enough to secure a very fine collection of English varieties, flowers much larger than the usual type, some as much as $4\frac{1}{2}$ inches across. These make plants of correct type and habit, fine foliage covering the pots, flower spikes upright, free growers and free flowering; wonderful exhibition specimens, prize winners wherever exhibited.

A fine collection of assorted colors for general use, \$10 for 10, \$95 per 100.

Helleborus

NIGER. The Christmas Rose. Beautiful single white; flowers in midwinter. Comes into flower naturally about Christmas. Extra heavy clumps, \$13 for 10; \$125 per 100.

Hyacinths (French)

ROMAN. White. Size 15 centimeters and over. \$29 per 100.

ROMAN. Light pink. Size 15 centimeters and over. \$18 per 100.

VIRGINIA. A new introduction that has proved its unusual value. It blooms at the same time as the white Roman Hyacinth but it furnishes a taller spike and the flowers are about twice as large, while the

color is a most refined porcelain blue with a white cross in the center. Invaluable for early cutting. \$30 per 100.

Specially Treated or Prepared Hyacinths for Early Forcing

By a special process of artificial ripening, these bulbs will produce flowers three weeks or more in advance of the Dutch Hyacinths and they are therefore invaluable for Early Forcing.

We offer in this class ONE GREAT SPECIALTY, a Roman variety named NIMROD, which flowers the earliest of all.

NIMROD. Delicate rose, beautiful flower. Resembling a large Roman Hyacinth. \$15 per 100.

Other varieties in this class that have proven eminently satisfactory are the following:

LADY DERBY. Fine rose-pink. One of the finest for forcing.

L'INNOCENCE. Large, pure white.

SCHOTEL. Beautiful Forget-me-not blue.

Above varieties \$28 per 100; \$80 per case of 300 bulbs, 100 of each.

These bulbs are delivered in early August; they should be immediately potted and put in a dark cool place to encourage thorough root action.

Do not begin to force a Hyacinth until the top growth is at least two inches out of the bulb.

*"Not a tree
A plant, a leaf, a blossom, but contains
A folio volume. We may read, and read
And read again, and still find
Something New."*

Cynthella Hyacinths
(*Miniature Hyacinths*)

This attractive class of Hyacinths for growing in pots, pans, or boxes, and so valuable for cutting, we offer in the three varieties which our many years experience has convinced us to be the most satisfactory.

ARGENTINE ARENDSSEN. Snow white.

LAURA. Violet blue.

NIMROD. Delicate rose. \$15 per 100.

For our Prize Winning Exhibition Hyacinths please consult our last, or the next, edition of our book "Beauty from Bulbs."



*"God made the Flowers to beautify
The earth, and cheer man's careful mood:
And he is happiest who hath power
To gather wisdom from a flower
And wake his heart in every hour
To pleasant gratitude."*

—WORDSWORTH

*Iris*es

WITH the advent of the beautiful newer varieties of bulbous Irises and the fact that these glorious flowers may be had in bloom from December until spring, adapting themselves so easily to forcing under glass, this class of bulbs has become of great importance.

They make fine pot plants and, with their tall stems, are invaluable as cutflowers for room or table decoration, much sought after for their artistic form and lovely coloring.

Quantities of these Irises should also be planted in deep pans, or deep boxes with wired bottoms, the pots or pans at least six inches deep, for plunging in the borders in spring. For Florida and Southern California for winter flowering they are also exceptionally valuable plants.

FILIFOLIA IMPERATOR. Dark violet and azure blue with yellow central streak. May be had in bloom very early. Special Stock, \$15 per 100.

STYLOSA (*Unguicularis Cærulea*). Light blue. These make splendid pot plants producing from late November on flowers in profusion, as fragrant as the violet. We furnish these in good strong clumps, large enough to go in a six inch pot. \$65 per 100.

TINGITANA WEDGEWOOD. The earliest to flower. Standards blue, falls beautiful pale blue with a yellow blotch; large flowers on very tall spike; free flowering. Received Highest Honors wherever exhibited. In our opinion the finest, most satisfactory and valuable of all forcing Irises. Also invaluable for Southern Florida and California. Special Stock, \$29 per 100.

*For brilliant plants to charm the eye
What plant can with the Iris vie?*

—ANON

Iris Hollandica

(*Dutch Irises*)

A. BLOEMAARD. Standards dark purplish blue, falls lighter blue; a very large, fine, early flowering variety on tall stem. Special Stock, \$12 per 100.

ADRIAAN BACKER. Uniform purple lilac. Special Stock, \$12 per 100.

POGGENBEECK. Standards and falls of a uniform dark blue, a great and distinct improvement; very fine flower on tall stem. Special Stock, \$12 per 100.

THERÈSE VAN DUYLL-SCHWARTZE. Standards pale cornflower blue, falls of the purest white with very narrow orange stripe. An excellent cutflower. Special Stock, \$12 per 100.

WHITE EXCELSIOR. This is one of the best and finest varieties for forcing with Wedgewood and Yellow Queen. The color is of a uniform pure white; the falls are very broad, the entire flower being of fine form and substance, carried on a tall stem. Very early. Special Stock, \$12 per 100.

YELLOW QUEEN. Here is one of the best yellows, excellent for early forcing. Thin wiry stems carry fine blooms of which the standards are pale yellow, while the small rounded falls are golden yellow. Splendid keeper. Special Stock, \$12 per 100.

Iris Hispanica

(*Spanish Irises*)

Spanish Irises are bearing somewhat smaller flowers than those of the Dutch group. They are especially valuable on account of their later flowering.

The varieties offered here are in our opinion the finest in this collection.

CAJANUS. Very fine canary-yellow with orange-yellow blotches on the falls. \$9 per 100.

KING OF THE BLUES. Very fine deep blue. A very strong and vigorous grower. \$9 per 100.

KING OF THE WHITES. Flowers are of the purest white with small orange blotch on the falls. \$9 per 100.

PRINCE HENRY. Flowers are large of a beautiful bronze. \$9 per 100.

Ixias

(*Corn "Lilies"*)

Beautiful bulbous plant with most showy and attractive flowers; extremely useful for cutting and for bouquets. They like a compost well mixed with charcoal.

Extra selected forcing bulbs in 10 finest varieties. \$8.50 per 100.

Lachenalias

(*Cape Cowslips*)

Very beautiful greenhouse plants flowering in early Spring, with curiously spotted leaves and handsome flower spikes. A very fine effect is obtained by planting *Lachenalias* in hanging baskets for greenhouse decoration.

\$35 per 100.

A Rare Novelty

Leucocoryne Ixioides Odorata

(*Glory of the Sun*)

Description by our collector:

"This lovely bulbous plant was quite one of the most beautiful of the many beautiful things I saw on my recent plant collecting expedition in Chile and the Andes, 1927-1928, and of all the things I secured and sent home, it promises to be one of the most valuable as a garden plant. The bulb is about the size of a Snow-drop bulb, and the foliage is thin and insignificant. The flowers appear after the leaves, and are carried on

erect wiry stems 18 inches high. They closely resemble the flowers of *Chionodoxa lucillæ* (*Glory of the Snow*)—the same size or even larger, the same beautiful blue color shading to a white center, but they are elegantly carried in a loose umbel or head of from three to six or seven on a tall wiry stem; above all they are deliciously fragrant with a powerful almond scent. The plant has extraordinary charm and grace of habit, and is absolutely first rate as a cut flower, lasting a week or more in water. There is probably still a great deal more to learn about the culture of the plant. As to hardiness, I should place it about on the level with the *Ixias*. It *might* be grown in the open in very favorable localities, if given a warm, well drained border at the foot of a south wall, and it will be well worth experimenting with in this way. Its chief use, however, will almost certainly be for the same treatment as *Freesias*, growing it in pots in a cool or temperate greenhouse for winter and spring flowering. Bulbs planted here in October are coming into flower at the end of February in a temperature of 50 to 60 degrees. Growers have flowered *Leucocoryne* very successfully under normal *Freesia* treatment. The after treatment should be the same as for *Freesias*, drying off completely when growth has finished, and the pots should be kept quite dry in a sunny greenhouse or frame in order to mature the bulbs with as much sun-roasting as possible!"—Clarence Elliott.

Our stock of bulbs is limited and we advise you to place orders early. \$9 for 25; \$17 for 50; \$33 per 100.

*"I placed it in the earth—this bulb of mine—
And from its narrow prison-house of night
It struggled forth to reach the air and light;
And as it rose and blossomed to the sight,
Its absolute perfection seemed divine!"*

—ISIDORE G. ASCHER, in "105 Sonnets."

Lilies for Forcing

LILIES may be had in flower every day in the year. For a special event—a wedding perhaps—or any social function, you can now depend upon having them exactly for the day wanted.

There are two classes—those that may be forced gradually and naturally, which we shall call “fresh” Lilies, and those that have been “retarded,” that is, placed in cold storage.

We list below the choicest dependable varieties for your consideration and selection.

AURATUM MACRANTHUM (*Platyphyllum*) (*Fresh*). The grand, sturdy, large flowering plant, that will produce its wonderful blooms, white, richly spotted with yellow, easily under proper forcing conditions. We recommend this as superior in every way to the type. Special Stock, \$26 per case of 25; \$49 per case of 50; \$98 per 100.

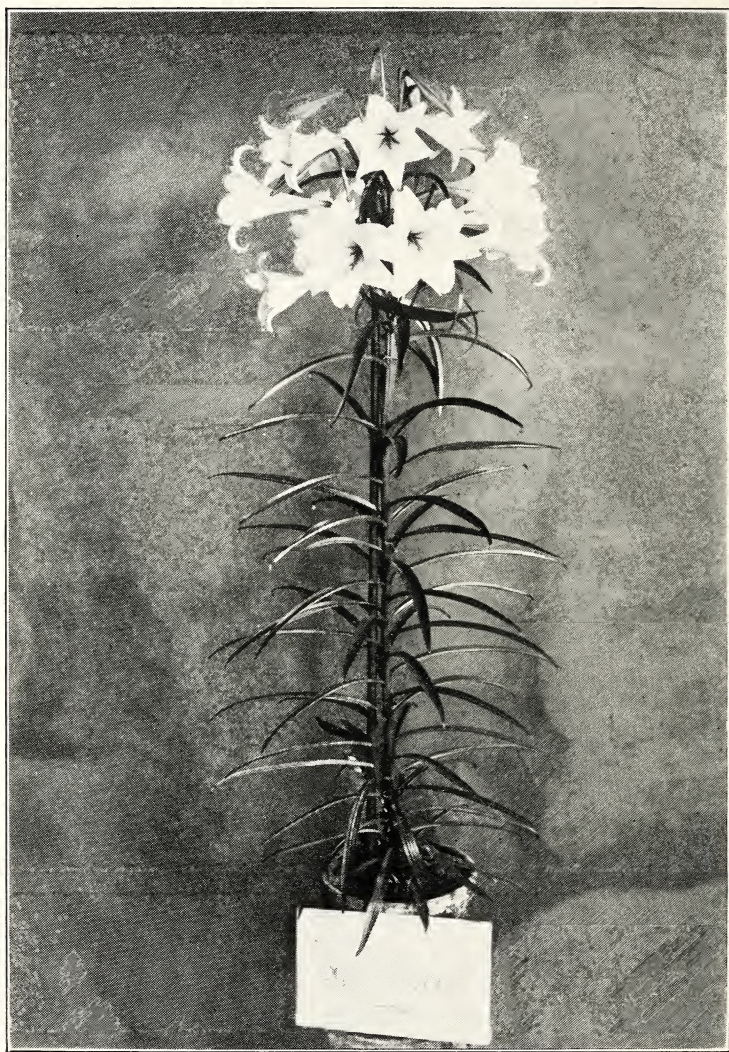
BATEMANNIÆ (*Fresh*). Glowing apricot self color. For growing in pots, takes four months to flower. Extra selected bulbs, \$15 for case of 25; \$28 for case of 50; \$55 per 100.

CANADENSE. Broad, funnel shaped, drooping flowers, varying from yellow to orange, spotted inside; graceful and pretty. Splendid to grow in quantity for table decoration or for cut flowers. Extra selected bulbs, \$47.50 per 100.

CANDIDUM (*Fresh*). From Northern France. For growing in pots, pans or tubs for plunging in the borders, in vacant places or in combination with other plants, or to advance the flowering season. Special Stock, \$15 per case of 25; \$28 per case of 50; \$55 per 100.



SCHEEPERS' LILIUM HARRISII
AWARDED FIRST PRIZE IN STRONG COMPETITION
INTERNATIONAL FLOWER SHOW, NEW YORK CITY



OUR SPECIAL STOCK OF LILIUM FORMOSUM

CROCEUM (*Fresh*). The true variety. Bright orange flowers, which are carried upright. Very decorative. Extra selected bulbs, \$8 for 10; \$75 per 100.

FORMOSUM (*Fresh*). Our prize winning type. Single-nosed bulbs. \$23 for 25; \$45 for 50; \$85 per 100. Special Stock \$30 for 25; \$58 for 50; \$115 per 100.

Every year we receive a few Extra Specimen bulbs which we offer in limited number at \$15 for 10.

FORMOSUM (*Retarded*). Special Stock. \$32 for 25; \$61 for 50; \$120 per 100. A smaller good flowering size, \$23 for 25; \$45 for 50; \$85 per 100.

GIGANTEUM (*Fresh*). Size 11 to 13 inches. \$21 for 25; \$39 for 50; \$75 per 100.

GIGANTEUM (*Retarded*). Special Stock. \$24 for 25; \$45 for 50; \$85 per 100.

HANSONII (*Fresh*). In every way most desirable, being not particular in its cultural requirements and extremely handsome in flower. The stem reaches a height of 4 to 5 feet, carrying blossoms 2 inches across, regularly reflexed, the petals being of a soft orange-yellow, spotted more or less with brown. Extra selected bulbs, \$12 for 10; \$115 per 100.

HARRISII (*Fresh*). Our well known pure strain, which we have successfully used for seventeen years. Size 11 inches, single-nosed bulbs, \$23.50 for 25; \$45 for 50; \$85 per 100. Special Stock, \$35 for case of 25; \$70 for case of 50. Every year we receive a few Extra Specimen bulbs which we offer in limited number at \$20 for 10.

HENRYI (*Fresh*). The orange-yellow speciosum. We cannot say too much of this fine Lily. Very free flowering producing a large number of soft orange-yellow reflexed flowers, well set off by deep green foliage. One of the easiest to force producing a won-

derful tall flowering plant. Extra selected bulbs, \$24 for case of 25; \$47 for case of 50; \$92 per 100. Every year we have a few exceedingly large specimen bulbs which we offer in limited number at \$32 for case of 25; \$62.50 for case of 50.

HENRYI (*Retarded*). Fine light orange-yellow. Special Stock. \$28 for case of 25; \$52 for case of 50; \$98 per 100. A limited number of Extra Specimen bulbs at \$14 for 10.

JAPONICUM (*Fresh*). This lovely "pink" Lily does well grown in pots or pans. We usually put two bulbs in a seven inch pot, using a deep flower pot. Delivery November-March. Special Stock, \$15 per case of 25; \$28 per case of 50; \$52.50 per 100.

REGALE (*Fresh*). Undoubtedly one of the finest Lilies for forcing. For growing in pots or pans for cutflowers or for house decoration; for plunging in the borders in vacant places or to advance the flowering season. November-March delivery. Special Stock, \$28 for 25, \$100 per 100. Extra Special Stock, only a limited number of these bulbs annually available, \$40 per case of 25; \$78 per case of 50.

REGALE (*Retarded*). One of the most beautiful Lilies for growing in pots for various purposes. For plunging into places in the garden to extend the flowering season into October, pot the bulbs in May, June and July. These retarded bulbs require but a few weeks to flower. Special Stock, \$30 for case of 25; \$58 for case of 50; \$115 per 100. Extra Special Stock of which we have only a limited number to offer annually. \$45 for case of 25; \$89 for case of 50.

SPECIOSUM ALBUM KRÆTZERI (*Fresh*). The true variety as offered by us is very scarce. Beautiful, snow-white flowers with a golden green stripe through the center of each petal, and anthers of a coppery tint.

Alike in the form of the flower and in the way of growing, this Lily is one of the most beautiful we have. Extra selected bulbs, \$37.50 for case of 25; \$74 for case of 50. A smaller but good flowering bulb. \$65 per 100.

SPECIOSUM ALBUM NOVUM (*Fresh*). This form is distinct from Krætzeri. Flowers are large of the purest white and beautiful golden yellow anthers. Extra heavy, selected bulbs, \$24 for case of 25; \$47 for case of 50; \$92 for case of 100. Smaller, strong flowering bulbs, \$55 per 100.

SPECIOSUM ALBUM (*Retarded*). Glistening snow-white. For growing in pots for plunging in vacant places in the borders to extend the flowering season into October, pot the bulbs in late April. For late fall, winter and early spring flowering, pot up from June first on, not later than September first. Special Stock, \$24 for case of 25; \$47 for case of 50; \$92 per 100. Smaller, strong flowering bulbs, \$58 per 100.

SPECIOSUM MAGNIFICUM (*Fresh*). (*Rubrum Improved*). Rich, ruby-carmine, margined white; stout of substance and broad of petal. This variety stands out prominently on account of its vigorous growth as well as the size and depth of coloring of the blooms. For early June flowering. Extra heavy, selected bulbs, \$24 for case of 25; \$47 for case of 50; \$92 for case of 100. Smaller, strong flowering bulbs, \$55 per 100.

Every year we have a few exceedingly large specimen bulbs of which we offer a limited number at \$32.50 for case of 25, \$62.50 for case of 50.

SPECIOSUM MAGNIFICUM (*Retarded*). Rich, ruby-carmine with white margin. For growing in pots for plunging in various parts of the flower garden to extend the flowering season into October, pot the bulbs in May. For late fall, winter and early spring flowering, pot the bulbs from June first on, not later than September first. Special Stock. \$26 for case of

25; \$51 for case of 50; \$98 per 100. Smaller good bulbs, \$55 per 100.

Every year we have a few exceedingly large specimen bulbs of which we offer a limited number at \$35 for case of 25, \$65 for case of 50.

SPECIOSUM MELPOMENE (*Fresh*). The delicate beauty of the finer colored flowers makes this variety most desirable. Deep carmine-crimson, intensified by a narrow margin of white. For early June flowering. Special Stock, \$24 for case of 25; \$47 for case of 50; \$92 for case of 100. Smaller, strong flowering bulbs, \$55 per 100.

Every year we have a few exceedingly large specimen bulbs of which we offer a limited number at \$32.50 for case of 25; \$62.50 for case of 50.

SPECIOSUM MELPOMENE (*Retarded*). Deep carmine-crimson intensified by a narrow margin of white. For growing in pots for plunging in the borders to extend the flowering season into October, pot the bulbs in May. For late fall, winter and early spring flowering, pot the bulbs from June first on, not later than September first. Special Stock, \$26 for case of 25; \$51 for case of 50; \$98 per 100. Smaller good flowering bulbs, \$58 per 100.

Every year we have a few exceedingly large specimen bulbs of which we offer a limited number at \$35 for case of 25, \$65 for case of 50.

SULPHUREUM (*Retarded*). A splendid Lily with large tubular creamy yellow flowers, which have a rich yellow throat. Exceedingly beautiful. This Lily does very well from retarded bulbs; pot the bulbs from June first on, not later than October first. Extra selected bulbs \$35 for 10; \$78 for case of 25. A smaller bulb, \$20 for 10; \$175 per 100.

TESTACEUM (*Fresh*). This beautiful Lily is also known as "Excelsum" and as the "Nankeen" Lily. One of

the choicest Lilies. The dull apricot tone, set off by orange anthers, puts it in a color class by itself. There is a tender warmth that must be allowed for when thinking of the color of this charming Lily. It is the most graceful of all.

Extra heavy, selected bulbs, \$38 for 10; \$375 per 100. Smaller but strong flowering bulbs, \$24 for 10; \$235 per 100.

TIGRINUM SPLENDENS (*Retarded*). The best form of Tiger Lily with the finest color. The large shapely flowers are of a soft salmon-orange spotted with glossy black. This Lily is very robust in habit and of easy culture. Very attractive forced. Special Stock, \$55 per 100. Extra Special Stock, enormous bulbs producing several strong spikes, \$23 for case of 25; \$45 for case of 50; \$85 per 100.

UMBELLATUM GRANDIFLORUM (*Fresh*). A very free-flowering variety of easy culture. Carries large umbellate heads of light orange-red flowers. Extra selected bulbs, \$5 for 10; \$45 per 100.

UMBRELLATUM SPLENDIDUM (*Fresh*). A magnificent variety growing 2 to 2½ feet high, with large umbellate heads of brilliant vermilion-orange flowers shading to a rich coppery crimson tone. As a forcing plant, the color effect is most striking and unusual. The flowers are unspotted or nearly so, and the points of the petals slightly reflexed. Extra heavy, selected bulbs, \$10 for 10; \$95 per 100.

For other rare and beautiful Lilies see our 1931 Fall Edition of "Beauty from Bulbs," available in May.

Lilies of the Valley ***("Excellent")***

Retarded from cold storage for delivery at any time of the year, to flower twenty-one days from "potting up."

The celebrated "Excellenta" strain is so well known to flower show exhibitors and judges alike and to those who wish the maximum result, that it requires no introduction, nor comment, ALWAYS having carried off FIRST PRIZE in any competition.

Shrewd users have learned by experience that our Excellenta strain proves the more economical considering the high percentage of perfect blooms and the superiority of the flowers.

In view of the fact that only a limited quantity of this fine stock is available, we would urge you to make your reservations very early covering your requirements for the entire year. We are always sold out early in the season; if you reserve the total quantity that you believe you will need for the year, you can give us later the specific shipping dates or make changes in your reservation; we find that we always have demand for any portion of a reservation that later may not be wanted.

Case of 100 pips, \$14; case of 250 pips, \$21; case of 500 pips, \$41.00.

We handle no other Lilies of the Valley but our "Excellenta" strain and we are the exclusive distributors of this special stock.

Muscari

(Grape Hyacinths)

BOTRYOIDES ALBUS. Pure white. Excellent for forcing. Extra heavy bulbs, especially selected for forcing purposes. \$5 per 100; \$45 per 1,000.

HEAVENLY BLUE. Bright clear blue. The best for forcing. Extra heavy bulbs, especially selected for forcing purposes. \$5 per 100; \$45 per 1,000.



Narcissi "French"

Our bulbs are the finest available successfully produced in Southern California for early forcing and must not be confused with bulbs produced elsewhere which, while delivered early, take much longer to flower, and do not seem to bloom as early and as satisfactorily.

CAMPERNELLE, SINGLE. The sweet Campernelle; very floriferous; excellent for mass cutting; fine for decorative effects. \$12 per 100.

GLORIOSA. Bunch flowered, pure white with orange cup; sweet scented. \$18.00 per 100.

GRAND SOLEIL D'OR. The yellow counterpart of the Paperwhite. Yellow with orange cup. Not so strongly scented as the Paperwhite. Special Stock, \$23 per 100.

PAPERWHITE GRANDIFLORA. The pure white, sweet scented, very early bunch-flowered Narcissi. The true type. Our Special Stock, size 15 centimeters and over, \$12 per 100.

Narcissi "Dutch"

We offer only the finest and best varieties for forcing for general use, for special occasions and for flower shows, in **HEAVIEST TOP-SIZE** bulbs, carefully selected for utmost result.

Our **SPECIAL STOCK** Narcissi have been awarded the Highest Awards at important flower shows.

Yellow Trumpets

EMPERIOR. Rich, full, yellow trumpet; deep primrose perianth. \$21 per 100.

KING ALFRED. Remarkably handsome, unrivaled in size and beauty. Large, bold, golden yellow flower with

deeply frilled mouth, elegantly recurved. Of splendid lasting quality. The ideal cut flower. Our SPECIAL STOCK has proved superior to any other, flowering before Christmas. \$47.50 per 100. Extra heavy bulbs, \$30 per 100.

OLYMPIA. Bold, large, yellow trumpet; pale yellow perianth. An enormous flower, splendid in every way. Special Stock, only limited quantity available, \$37.50 per 100.

TRESSERVE. Beautiful light yellow Trumpet Daffodil, extra large flower; splendid exhibition variety. Fine for forcing. Special Stock, only limited quantity available, \$47.50 per 100. Extra heavy bulbs, \$30 per 100.

VAN WAVEREN'S GIANT. One of the largest of all Trumpet Daffodils; flowers of huge dimension; bright yellow trumpet with primrose perianth of campanulate form. Very tall and vigorous grower. Special Stock, only limited quantity available, \$47.50 per 100.

Bicolor Trumpets

(Perianth white, trumpet yellow)

GLORY OF SASSENHEIM. Bold bicolor variety, fine and early, an easy and good variety for forcing. Special Stock, \$30 per 100. Extra heavy bulbs, \$21 per 100.

ROBERT SYDENHAM. Immense, beautiful exhibition variety. Special Stock, only limited quantity available, \$47.50 per 100.

SPRING GLORY. Long chrome-yellow trumpet with reflexed brim; clear white perianth. Very large flower of beautiful form. Special Stock, only limited quantity available, \$47.50 per 100. Extra heavy bulbs, \$30 per 100.

Incomparabilis Varieties

(Large chalice-cupped)

CROESUS. The widely opened and glowing orange cup of this Daffodil against its very slightly reflexed perianth of creamy white with a tinge of lemon-yellow gives it a central glow which can never pass unnoticed. A most attractive and striking Daffodil. An almost scarlet rim enhances the rich orange of the cup and the bold fluting of the cup is a part of its beauty. \$12.50 for 10; \$115 per 100.

LUCIFER. Large, handsome white perianth; cup intense glowing orange-red; splendid variety. Extra heavy bulbs, \$15 per 100.

SIR WATKIN. Bold, handsome flower; sulphur perianth, yellow cup, tinged bright orange. Extra heavy bulbs, perianth. Extra heavy bulbs. \$19 per 100.

WHITEWELL. Extra fine, large flower; perianth broad, creamy white; large, chrome-orange cup, much expanded. Extra heavy bulbs, \$25 per 100.

Barrii

(Short-cupped Daffodils)

BATH'S FLAME. Yellow perianth, deep yellow cup with a broad edge of orange-red. The petals are very long, giving the flower a distinct and outstanding character. Extra heavy bulbs, \$50 per 100.

BRILLIANCY. Very large flower. Perianth deep golden-yellow; golden-yellow cup, edged scarlet, \$40 per 100.

EARLY SURPRISE. This is not only a very early Daffodil but startling in color; a faintly greenish white perianth, segments rather pointed and apart, yet rather flat has a deep cup, charmingly fluted and frilled.

of clear yellow, with a $\frac{1}{4}$ inch ribbon-like edge of most vivid orange-scarlet. A dazzling flower, \$21 per 100.

LADY MOORE. Broad perianth, ivory-white, large yellow cup with red edge, splendid forcer. Exceedingly beautiful. Extra heavy bulbs, \$47.50 per 100.

Leedsii

(Eucharis-flowered Daffodils)

LORD KITCHENER. Flower of great size with very broad, flat, pure white perianth of firm substance; crown very large, of a delicate pale primrose, well open at the mouth and elegantly crimped at the brim. Extra heavy bulbs, \$30 per 100.

SIRDAR. A grand flower with broad, imbricated, silvery white perianth and large, bold, straight crown of a delicate cream color, deeply fluted and elegantly frilled at the mouth. Very tall grower. A wonderful exhibition variety, \$15 per 100.

Cyclamineus

(Cyclamen-flowered)

FEBRUARY GOLD. Beautiful golden yellow, exquisite novelty, very floriferous; aroused much comment in one of our recent New York exhibits. Extremely valuable for table decoration and individual vase work. This is undoubtedly one of the finest and most artistic varieties. Extra heavy bulbs, \$14 for 10; \$135 per 100.

Poetaz

(Tazetta Hybrids)

EARLY PERFECTION. An improved Elvira, handsomest of all the white and yellow Poetaz varieties; can be forced to bloom early in January. Extra heavy bulbs. \$25 per 100.

ELVIRA. Three to four large flowers of great substance, borne on long, graceful stem; broad white petals and a golden yellow cup edged orange; delicately fragrant. Splendid forcer. Extra heavy bulbs, \$17.50 per 100.

LAURENS KOSTER. Very handsome variety; perianth white with deep yellow cup. Extra heavy bulbs, \$17.50 per 100.

Poeticus

GLORY OF LISSE. The best variety for forcing; free-flowering. Large, snow-white perianth; cup rimmed red. Extra heavy bulbs, \$15 per 100.

ORNATUS. Pure white perianth; broad cup, margined scarlet; good early forcer. Extra heavy bulbs, \$12.50 per 100; \$115 per 1,000.

Jonquilla and Jonquil Hybrids

ODORUS RUGULOSUS (*Giganteus*). Bearing rich yellow fragrant flowers (two to four on a stem) with broad imbricated perianth and straight wrinkled cup, foliage erect and rush-like; a fine showy variety. Extra heavy bulbs, \$15 per 100.

Nerines

The most beautiful and easiest grown of Autumn flowering bulbs for the greenhouse. Few plants can compare with Nerines for their brilliant and attractive colors, which form a pleasing contrast to prevailing tints for that season of the year. The flowers are produced in umbels of 6 to 24 blooms, and are borne on stout stems varying in height from 1 to 2 feet. In color they range from dark red, vivid crimson, cerise and scarlet to salmon, coral-rose, pink, blush and white as well as shades of mauve.

The varieties we offer are mostly new seedlings, comprising many new colors and forms; they are free

bloomers, and in some cases of taller growth, and with larger flowers than any of the older types.

Our Nerines have been awarded several Gold Medals at leading exhibitions. Flowering pot plants, each \$4.00.

Special Exhibition collections assembled by arrangement.

Oxalis

(*Wood sorrel*)

LARGE FLOWERING. We have a very fine strain of these Oxalis. Flowers are large, and they may be had in blossom, by successional plantings, from October until May. We have four colors—Lavender, Pink, White and Yellow. \$12 per 100.

BERMUDA BUTTERCUP. Bright sunny yellow. \$12 per 100.

Ornithogalums

THYRSOIDES. A beautiful species from South Africa; tall spikes of umbellated flowers measuring three to four inches across. White with brown eye. Lasts many weeks in flower. \$25 per 100.

Ranunculus

(*Scheepers' Supreme Strain*)

This strain is undoubtedly the most beautiful of all Ranunculus. Light, feathery, poppy-like flowers are artistically carried on elegant, wiry, tall stems. There is a great variety of beautiful pastel shadings, and of wonderful forms. Absolutely different from any other Ranunculus and far superior. Only limited stock available, \$29 per 100.

Scillas

SCILLA CAMPANULATA BLUE. Porcelain blue candelabra shaped bells. May be forced the same as Hyacinths. Excellent for cutting. Extra heavy forcing bulbs, \$6.75 per 100.

SCILLA CAMPANULATA ROSEA. This is a soft lilac-rose form of this type. Extra heavy forcing bulbs, \$7 per 100.

SCILLA CAMPANULATA WHITE. The pure white form. Extra heavy forcing bulbs, \$7 per 100.

SCILLA SIBIRICA. Spring Beauty. A glorified Scilla Sibirica blue. The color is a much clearer blue; the plant produces taller stems with five to six flowers from one bulb. An exceedingly fine novelty. \$20 per 100; \$175 per 1,000.

Sparaxis

A race of Cape bulbs with large flowers, remarkable for exceptional brilliancy of color. The varieties offered are mixed forms of Sparaxis tricolor. \$12 per 100.

Spireas

(Fresh Stock. Fall Delivery.)

CLARA BUTT. Lovely pure pink shaded apricot.

DEUTSCHLAND. Extra fine white.

GLADSTONE. White.

GLORIA SUPERBA. Bright pink.

PEACH BLOSSOM. Deep pink.

PRINCESS MARY. Rose.

QUEEN ALEXANDRA. Light pink.

RHINELANDER. Deep rose-pink.

RUBENS. Rosy Red.

\$5 per case of 5 extra heavy clumps, \$9 per case of 10 extra heavy clumps. Special Stock. \$15 per case of 10 heaviest clumps.

Spireas

(Retarded from Cold Storage)

(Delivery at any time)

By a special process of cold storing we are able to furnish Spirea clumps so that you may have them in flower at any time of the year. It is necessary to select only the very heaviest clumps with many strong flowering eyes, which will produce many flower spikes. Our prices are based upon delivery of such superior quality only. We are the original introducers of retarded Spireas.

DEUTSCHLAND. White.

GLADSTONE. White.

GLORIA SUPERBA. Bright pink.

PEACH BLOSSOM. Deep pink.

PRINCESS MARY. Rose.

QUEEN ALEXANDRA. Light pink.

RHINELANDER. Deep rose pink.

\$9 per case of 5 extra heavy clumps. \$16 per case of 10 extra heavy clumps. Special Stock, \$20 per case of 10 clumps.

Tritonias

The flowers of Tritonias resemble Freesias excepting that they grow much larger. The bulbs should be potted in fall and kept for several weeks in a cool dark place before they are gradually brought into heat. They do

not grow very rapidly, and should not be kept very warm; they are usually ready to flower in March. Plant them with the tops slightly protruding from the earth; it is well to set six or eight bulbs in a six inch pot or pan.

CARDINALIS. A rich deep red. \$15 per 100.

CROCATA. The orange form. \$15 per 100.

CROCATA ALBA. White. \$15 per 100.

CROCATA SALMON KING. Fine salmon-pink flowers.
\$25 per 100.

Tuberose

(Retarded, from Cold Storage)

By a special process of cold storing we are able to furnish these Tuberose for late fall and early winter flowering. The bulbs of our "Retarded" stock will bloom within two months after potting. A valuable acquisition.

EXCELSIOR. True Double Pearl. Special Stock. \$28 per 100.

French Tulips for Early Forcing

CLUSIANA. The "Ladies' Tulip." Such a lovely and artistic flower. Glistening white with a carmine flame on each petal; erect, wiry stems, twelve inches and more tall; glaucous leaves. This tulip, so easily grown, is delightful for pot and pan work; invaluable for cutting and for shipping. Lasts longer cut than any other Tulip and travels a long distance better than any other flower. Invaluable for table decoration. Blooms easily and early without much forcing from bulbs the size of a marble; a quantity can thus be grown in limited space. \$9 per 100; \$22 per bag of 250; \$85 per 1,000.

For other Tulips see our Fall 1931 Edition of "Beauty from Bulbs."

Watsonias

We offer a collection of Mrs. J. H. Bullard's celebrated Hybrid Watsonias, fine named varieties, in shades of Lavender, Mauve, Orange, Pink, Red, Salmon, Scarlet and White.

One each of ten named varieties.....\$ 5.00

Ten each of ten named varieties.....\$40.00

Mixed, \$3 for 10; \$25 per 100.

For the newer sorts of Mrs. J. H. Bullard's Hybrid Watsonias of which we have the exclusive stock, we refer to our special Price List of Watsonias, which will be mailed upon request.

"Wrexham" or "Hollyhock-Flowered" Delphiniums

We offer selected clumps of the celebrated Watkin Samuel strain for forcing in the greenhouse. Plants can be supplied in limited quantity after December 1st. Extra selected plants suitable for forcing, \$100 per 100.



*Mid-summer blooms within our quiet garden-ways;
A golden peacock down the dusky alley strays;
Gay flower petals strew*

—Pearl, emerald and blue—

*The curving slopes of fragrant summer grass;
The pools are clear as glass
Between the white cups of the lily-flowers;
The currants are like jewelled fairy-bowers;
A dazzling insect worries the heart of a rose,
Where a delicate fern a filmy shadow throws,
And airy as bubbles the thousands of bees
Over the young grape-clusters swarm as they please.*

* * *

*The air is pearly, iridescent, pure;
These profound and radiant noons mature,*
—EMILE VERHAEREN

“So now, in conclusion, do I recommend you, and me, and all of us, to the keeping of a happy and humble spirit, such as the love of a garden ought surely to engender.”—

—In a Yorkshire Garden,
REGINALD FARRER

