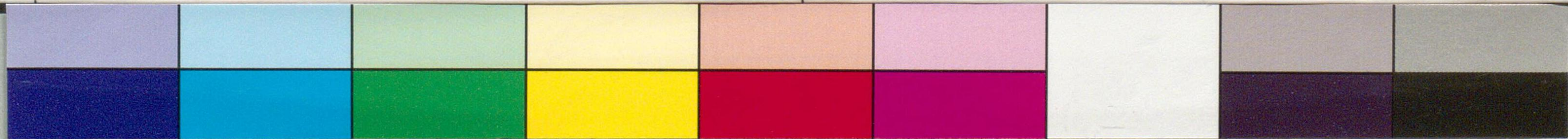
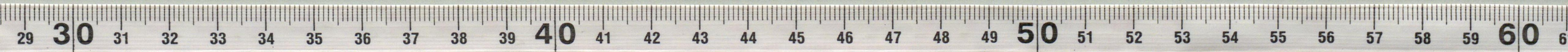
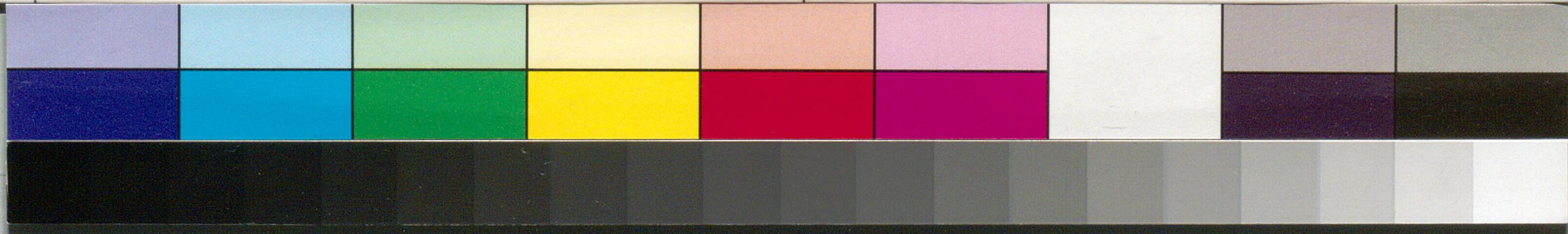
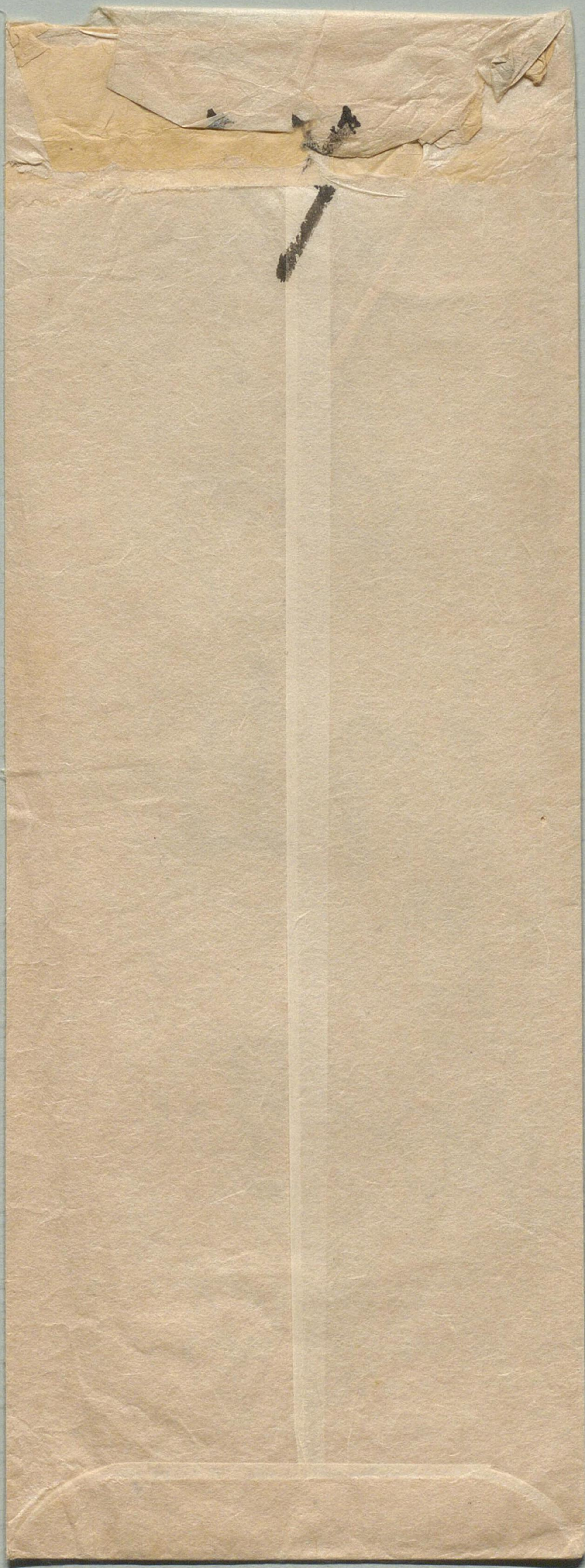


尾崎
三良
子
解

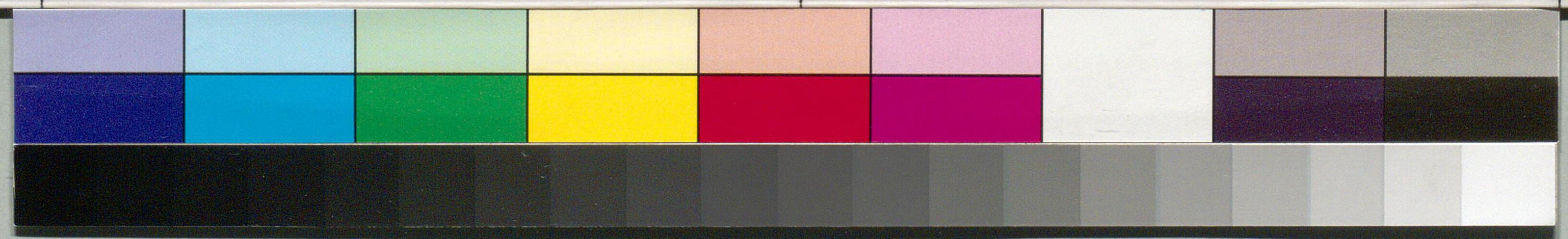
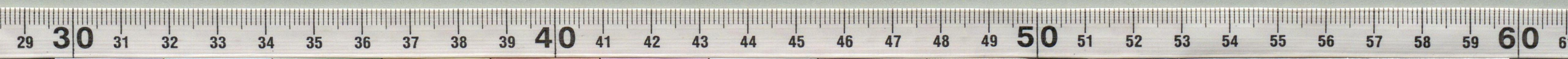
尾崎三良





国立国会図書館 尾崎三良関係文書 75-62

Handwritten text on a piece of aged paper, possibly a document or letter, written in a cursive script. The text is oriented vertically and appears to be in a historical or regional script, possibly Japanese or Chinese characters.



国立国会図書館 尾崎三良関係文書 75-62

相見難出相見多

心多并多

心多并多

心多并多

心多并多

心多并多

心多并多