

62,183

Miss Newman

ARP NURSERY COMPANY

TYLER, TEXAS

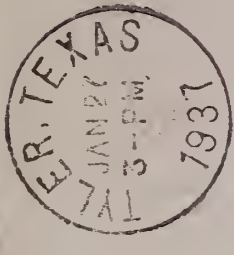
The Home of Better Rooted Trees



Pecans—Plums—Apples—Roses
Peaches—Grapes—Pears—Figs

Over 30 Years Nursery Experience

MORE Low Priced Trees
Money Saving Specials
Varieties to Choose From



SECTION 562 P. L. & R.



RECEIVED
FEB 2 1937
U. S. DEPARTMENT OF AGRICULTURE

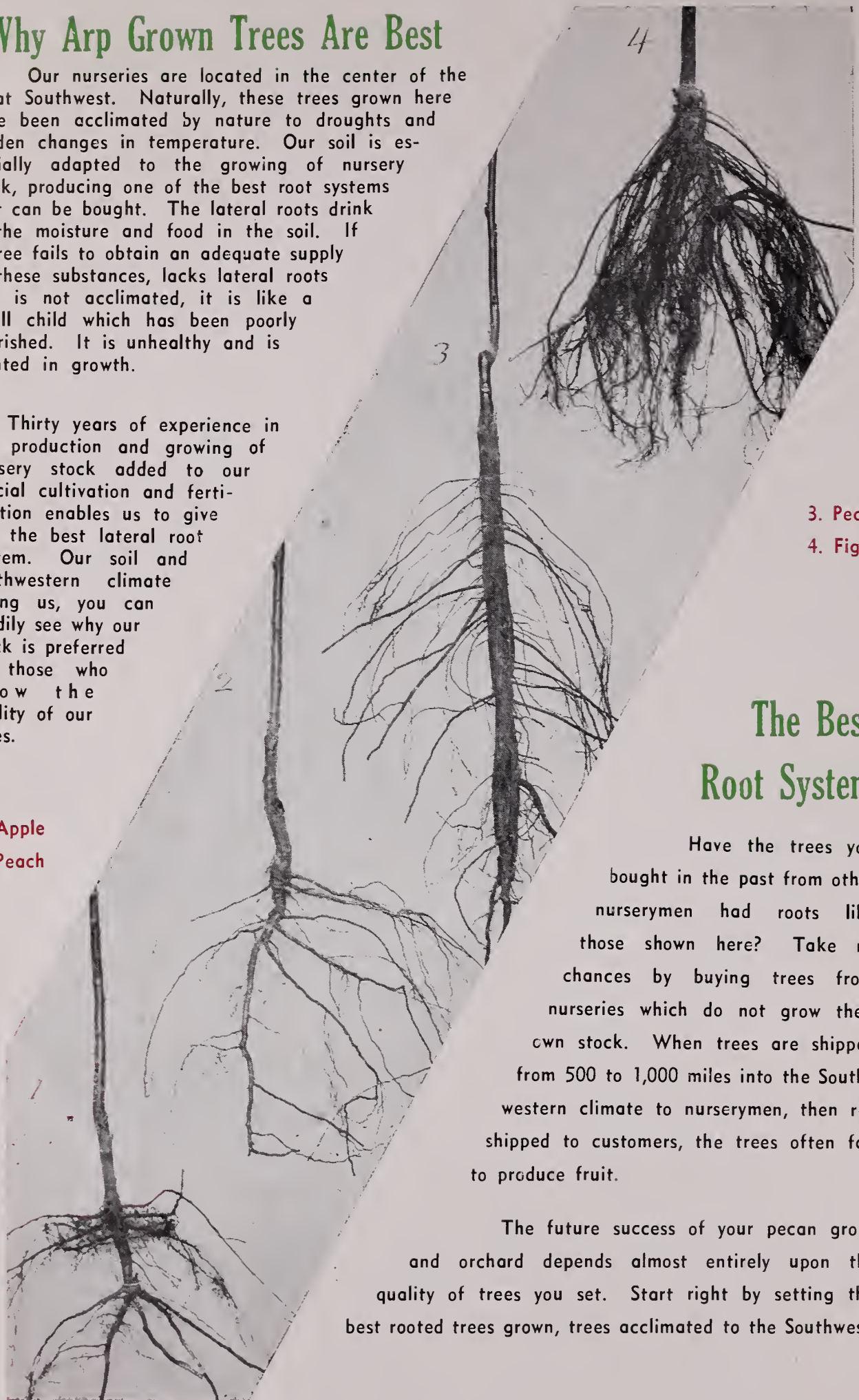
U. S. Department of Agriculture
Bureau of Plant Industry
Fruit and Vegetable Crops & Diseases
Washington, D. C.

Why Arp Grown Trees Are Best

Our nurseries are located in the center of the great Southwest. Naturally, these trees grown here have been acclimated by nature to droughts and sudden changes in temperature. Our soil is especially adapted to the growing of nursery stock, producing one of the best root systems that can be bought. The lateral roots drink in the moisture and food in the soil. If a tree fails to obtain an adequate supply of these substances, lacks lateral roots and is not acclimated, it is like a small child which has been poorly nourished. It is unhealthy and is stunted in growth.

Thirty years of experience in the production and growing of nursery stock added to our special cultivation and fertilization enables us to give you the best lateral root system. Our soil and Southwestern climate aiding us, you can readily see why our stock is preferred by those who know the quality of our trees.

- 1. Apple
- 2. Peach



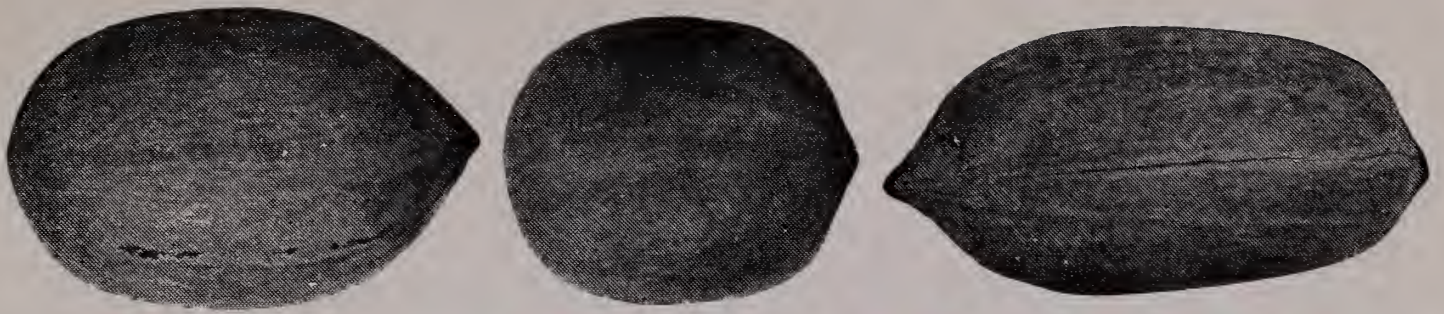
- 3. Pecan
- 4. Fig

The Best Root System

Have the trees you bought in the past from other nurserymen had roots like those shown here? Take no chances by buying trees from nurseries which do not grow their own stock. When trees are shipped from 500 to 1,000 miles into the Southwestern climate to nurserymen, then re-shipped to customers, the trees often fail to produce fruit.

The future success of your pecan grove and orchard depends almost entirely upon the quality of trees you set. Start right by setting the best rooted trees grown, trees acclimated to the Southwest.

Arp Nursery Company, Tyler, Texas



PLANT PECANS

The Most Profitable Agricultural Investment

SIZE OF TREES

In our opinion, a thrifty, well rooted tree is the first consideration in setting pecan trees. The size of the well-rooted tree is governed by its age. A well-rooted tree three to five feet, usually has a two or three year old root system with a one year graft or bud growth. Trees well-rooted five to eight feet usually have a three to four year old root system with one or two year graft or bud growth. Trees well-rooted eight feet up, usually have a four to five year old root system with two or three year graft or bud growth. We have found that trees from three to ten feet, with a good lateral root system and a reasonable amount of tap root, are being transplanted with the best success. Therefore, we do not recommend a certain size, but we do suggest when selecting sizes that you take into consideration that the larger and older trees will begin bearing earlier than the smaller ones.

Varieties

In planting commercial orchards, two to five varieties should be used. Varieties selected should be governed by your location. For East Texas, Louisiana, Arkansas and Eastern Oklahoma, we advise planting Stuart, Success, Schley, Delmas, Money Maker and Burkett; for Central Texas and Western Oklahoma, Stuart, Success, Schley, Delmas, Burkett, Halbert and Texas Prolific; for Coastal sections, Stuart, Success, Money Maker; for West Texas and New Mexico, Halbert, Burkett, Texas Prolific, with a small per cent of Success, Schley, Delmas and Stuart.

PRICE LIST of Paper Shell Pecan Trees

(F. O. B. OUR SHIPPING POINT)

VARIETIES

Stuart, Success, Delmas, Schley, Money Maker, Burkett, Texas Prolific, Halbert

SIZE OF TREES	PRICE EACH	10 to 49 TREES	50 to 99 TREES	100 to 499 TREES
2 to 3 feet.....	.65	.55	.50	.40
3 to 4 feet.....	.70	.60	.55	.45
4 to 5 feet.....	.80	.70	.60	.50
5 to 6 feet.....	\$1.00	.90	.80	.60
6 to 7 feet.....	\$1.25	\$1.10	\$1.00	.75
7 to 8 feet.....	\$1.50	\$1.35	\$1.25	\$1.00
8 to 10 feet.....	\$2.00	\$1.75	\$1.50	\$1.25

For quantities of 500 or more trees, write us for special prices, giving varieties and sizes wanted.

The Home of Better Rooted Trees



PEACHES

Arp Nursery Company grows a large stock of Peaches. We budded this season nearly one-fourth million trees in all the leading varieties as listed below. Our stock is clean and first class in every respect. Our supply of 2-year-old trees (2-year roots and 1-year tops, Dormant Buds), and the one year June Buds, are good. If you are setting a commercial orchard this season, do not fail to write for our quotations first.

Varieties

MAYFLOWER—Semi-cling, good early peach, ripens May 1.

VICTOR—Semi-cling, well known, ripens May 1.

EARLY WHEELER—Semi-cling, large, commercially good, ripens May 25.

ARP BEAUTY—Semi-cling, high flavored, ripens June 1.

LATE ARP BEAUTY—Semi-cling, large, good seller, ripens June 15.

MAMIE ROSS—Semi-cling, very popular, ripens June 10 to 15.

CARMAN—Semi-cling, juicy, good market, ripens June 15.

HILEY BELLE—Freestone, prolific bearer, ripens middle of June.

SLAPPY—Freestone, yellow and delicious, ripens June 20.

ELBERTA—Freestone, old and well known, ripens July 7.

BELLE OF GEORGIA — Large, red, all-round peach, ripens July 15.

CHINESE CLING — Juicy and sweet, widely known, ripens middle of July.

J. H. HALE—Freestone, large and golden, ripens July 20.

AUGBERTA—Freestone, like Elberta, good market, ripens August 7.

OLD MIXON CLING — Large, yellowish and delicious, ripens August 1.

LEMON CLING—Large, oblong, yellow flesh, a good August peach.

HEATH CLING—Large, creamy, firm flesh, ripens last of August.

HENRIETTA—Cling, yellow and large, ripens last of August.

RED INDIAN—Cling, old time Indian peach, ripens in August.

YELLOW INDIAN—Cling, popular in home orchards, ripens in August.

STENSON OCTOBER—Cling, white, the latest well known variety.

GENERAL LEE—Cling, consistently good white peach, ripens August 1.

ELBERTA CLING—High quality, like Elberta in ripening.

MONEY MAKER—A heavy bearer and good marketing peach.

TEXAS KING—Large and fast growing, preferred by many.

Prices of Peach Trees

F. O. B. Our Shipping Point

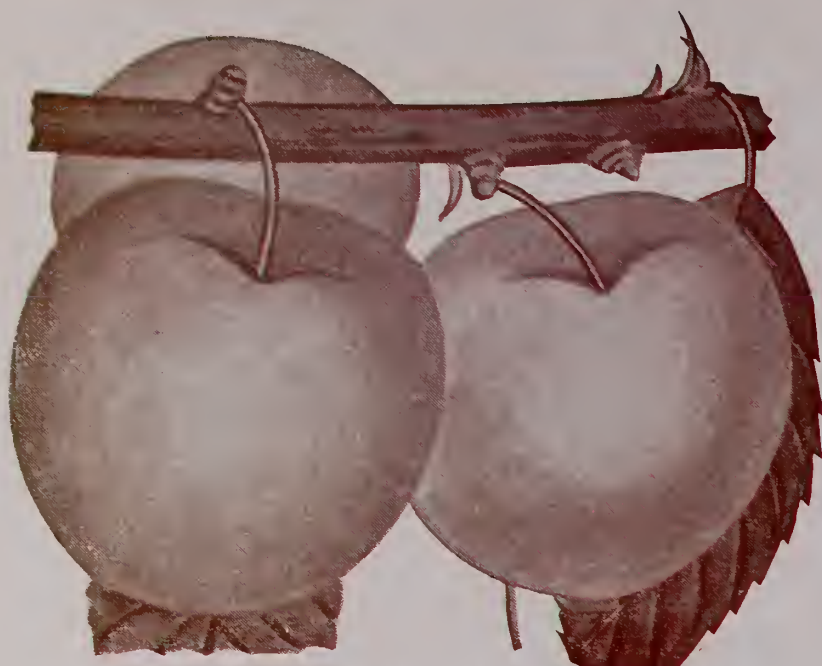
SIZE OF TREES	Price Each	Price Each	Price Each
	Lots of 1 to 25	Lots of 25 to 100	Lots of 100 to 500
18 to 24 Inches.....	.15	.12½	.10
2 to 3 Feet.....	.20	.15	.12½
3 to 4 Feet.....	.25	.17½	.15
4 to 5 Feet.....	.35	.25	.20
5 to 7 Feet (2-Years).....	.40	.30	.25

If interested in larger quantities for commercial planting, write us for special prices, giving varieties and number of trees wanted.

PLUMS

Varieties

- SIX WEEKS—May, large, profitable to grow.
 COMPASS CHERRY—June, a plum-cherry cross, medium size.
 BRUCE—June, large and firm for shipping, good flavor.
 RED JUNE—June, very red, grows in clusters.
 GOLD—July, one of the best, all good qualities.
 AMERICA—July, fast growing, fine for commercial use.



BURBANK—July, old favorite variety, bears well. BLUE DAMSON—July, hardy, prolific, extensively preserved. WICKSON—August, very large fruit, old and popular plum. GOLDEN BEAUTY—September, heavy bearing preserve fruit. FRANCES—June, a handsome yellow plum, ripens early. WILD GOOSE—June, an old favorite preferred for home use. ALASKA—A good growing but very scarce variety.

Prices on Plums

(F. O. B. Our Shipping Point)

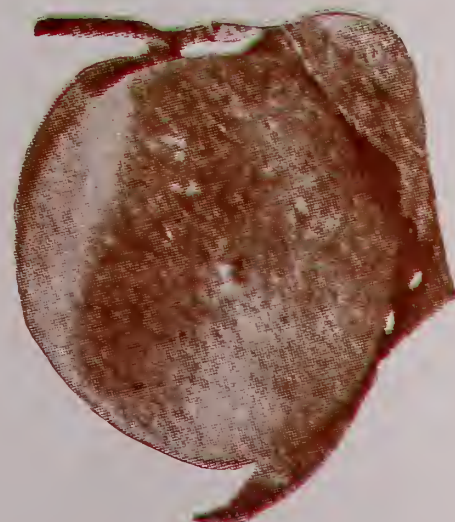
Add Plums to Peach List for Advantage of Quantity Prices

SIZE OF TREES	Price Each	Price Each	Price Each
	Lots of 1 to 25	Lots of 25 to 100	Lots of 100 to 1,000
18 to 24 Inches.....	.20	.17½	.15
2 to 3 Feet.....	.25	.20	.17½
3 to 4 Feet.....	.30	.22½	.20
4 to 5 Feet.....	.40	.30	.25
5 to 7 Feet (2-year).....	.50	.40	.30

APRICOTS

Varieties

- EARLY GOLDEN—Medium size, yellow, freestone, rich and juicy.
 CLUSTER—Medium, golden yellow, delicious flavor, good bearer.
 MOORPARK—Large, yellow with green flesh, separates readily from the seed.
 ROYAL—Popular variety, good market demand.



Prices of Apricots

(F. O. B. Our Shipping Point)

18 to 24 Inches—20c each; 2 to 3 Feet—25c each; 3 to 4 Feet—35c each
 4 to 5 Feet—50c each; 5 to 7 Feet—65c each

APPLES

Varieties

- RED JUNE—Ripens early, good for table or market, flesh white.
 YELLOW TRANSPARENT—June, bears young, large, hardy grower.
 JONATHAN—September, fine flavor, sure bearer, most popular.
 MAMMOTH BLACK TWIG—November, hardy trees, bear well.
 WINESAP—September to October, old variety, keeps well.
 ARKANSAS BLACK—October, excellent flavor, medium size.
 DELICIOUS—Late fall, crisp flesh, dark red, juicy, best quality.
 YELLOW DELICIOUS—Golden with red cheeks, good to cook or market.



Prices of Apples

(F. O. B. Our Shipping Point)

SIZE OF TREES	Price Each	Price Each	Price Each
	Lots of 1 to 9	Lots of 10 to 99	Lots of 100 & Up
3 to 4 Feet.....	.35	.30	.25
4 to 5 Feet.....	.45	.40	.35

PEARS

Varieties

- BARTLETT—Fruit yellow, juicy, delicious flavor, successful in most sections; ripens July to August.
 GARBER—Fruit large, yellow, red cheeks, choice variety for the South; ripens in August.
 KEIFFER—Fruit very large, grown successfully in all sections; ripens in September.



Prices of Pears

(F. O. B. Our Shipping Point)

SIZE OF TREES	Price Each	Price Each	Price Each
	Lots of 1 to 9	Lots of 10 to 99	Lots of 100 & Up
3 to 4 Feet.....	.35	.30	.25
4 to 5 Feet.....	.45	.40	.35

GRAPES

Varieties



MOORE'S EARLY—Fruit large, black, has good flavor, fine market grape, good for home planting; vine vigorous; ripens in June.

NIAGARA — Fruit large, greenish white, large cluster, good quality, successful in nearly all sections; ripens first of July.

CONCORD—Fruit large, black, the best known of all varieties, one of the best for home or market; ripens in July.

CARMAN—Vine very thrifty, does well on any kind of soil, grapes large, compact cluster, a fine eating grape, one of the best varieties; ripens about August 10th.

DELAWARE—Fruit small, compact cluster, juicy with a sweet delicious flavor, standard variety for table and market use; ripens last of August.

Prices of Grapes

(F. O. B. Our Shipping Point)

	Each	Lots of 12 to 24	Lots of 25 to 100
1 Year Plants— (well rooted and branched).....	.20	.15	.12
2 Year Plants— (well rooted and branched).....	.25	.20	.15

FIGS

Varieties

MAGNOLIA—Fruit large, pale violet, flavor excellent; bears on one year stem. The leader for commercial orchards in the Coast Belt Section.

CELESTIAL—Fruit medium size, delicious flavor, a good bearer; one of the best varieties for Texas (North of Coast Section), Oklahoma, Arkansas and similar climates.

BROWN TURKEY—Oblong, Red flesh, dark brown, delicious, prolific.

Prices of Figs

(F. O. B. Our Shipping Point)

SIZE OF TREES	Price Each Lots of 1 to 9	Price Each Lots of 10 to 99	Price Each Lots of 100 & Up
2 to 3 Feet.....	.35	.25	.20
3 to 4 Feet.....	.50	.35	.25
4 to 5 Feet.....	.60	.45	.35

ROSES

Your choice of 58 of the leading varieties of everblooming Roses, all budded on Multiflora Japonica root stock, no variation of prices on any varieties.

Varieties

RED—American Beauty, Ami Quinard, Chas. K. Douglas, E. G. Hill, Etoile de France, Etoile de Holland, Hollywood, John Russell, Lord Charlemont, Margaret McGredy, McGredy's Scarlet, Patience, Paul Neyron, Red Radiance, Sensation, Frances Scott Key.

YELLOW—Autumn, Joanna Hill, Julien Potin, Lady Hillingdon, Luxembourg, Mrs. Lovell Swisher, Mrs. Pierre S. DuPont, Padre, Pres. Herbert Hoover, Roslyn, Talisman.

POLYANTHIA—Baby Doll (TipTop), Cecile Brunner, Ellen Poulsen, Golden Salmon, Pink Polly.

PINK — Betty Uprichard, Columbia, Countess of Ilchester, Dainty Bess, Dame Edith Helen, Edith Nellie Perkins, Frank W. Dunlop, Jonkheer J. L. Mock, Mme. Butterfly, Mev. G. A. Van Rossem, Pink Cochet, Pink Pearl, Pink Radiance, Willowmere, Wm. F. Dreer.

WHITE — American Beauty, Antoine Rivoire, Caledonia, Kaiserine Augusta Viktoria, Killarney.

CLIMBERS—Kaiserine Augusta Viktoria, Meteor, Paul's Scarlet, Red Radiance, Talisman.

RUGOSA—F. J. Grootendorst—red.

Prices of Roses

(F. O. B. Our Shipping Point)

	Each	Per Dozen	Lots of 100
Budded (2-Year Old Plants) No. 2	.25	2.00	.12½
Budded (2-Year Old Plants) No. 1½	.35	3.00	.17½
Budded (2-Year Old Plants) No. 1	.50	4.00	.25

