

Historic, archived document

Do not assume content reflects current scientific knowledge, policies, or practices



R
430
G51

Euphorbia see if same as *Euphorbia glaberrima* 103/10
Eralo of whom ~~103/10~~ (maer o glassum, etc) 106/10

Alouca of night (~~103/10~~) (*Chalardonia*) 105/6

Grapholitia oculana of whom (*Bullina*) 105/22

Culana of whom ~~105/22~~ (*Grapholitia* or *pentana*) 105/22
see page 1869-70

Orobacna of whom (*Stromentalis*) 115/10

Evannidaris of night (*Kyrena*) 115/16.

Mucro of whom (*Regione*) 117/11

Dulnicia of whom (*Spere*) (*Guama*) 117/11

hamonclis of whom (*penphelia*) 117/13

hieroglyphica of whom (*Euglypha*) 103/1

basilava of whom ~~103/1~~ (*par or gya*) 105/2

Stulta of Bois of whom ~~105/2~~ (*Penonea lisa*) 105/7

~~105/7~~ *len yrr hoglossum* of whom 105/10 (*eculus*)

eculus of whom *Euphorbia glaberrima* 105/10

Lacina of whom (*pseudolhyala expulatrix*) 73/15

monula of whom (*Fraxanaria*) 73/21. *Euclea quacati*.

~~Callacoe~~ *clunaris* of whom (*Karsa viridis*) 73/22 *Callachora*

clunaris of whom (*Copia costali*) 73/23

archivis of whom (*Pnephos ingans*) ~~76/4~~ 76/4

auradelus of whom (*Crambus*) 77/5

peronca of whom (*Teras galiccolana*) 77/9.

marginata of whom (*Lygraphocia anigera*) 77/25.

duchogramma of whom (*Scopolosoma renulenta*) 77/9.

Callalacia of whom ~~77/14~~ (*Gnophocla cressonana*) 77/14

antiopone of whom (*Epicone depontanata*) 50/12

bulula of whom ~~52/14~~ *var blandana* 52/14

antithesia of whom (*numbalana*) 52/15

Phoessa of whom (*rimbosa*) 52/20

formosana of whom (*Lophocana formosana* of whom) 52/22.

formosana of whom " " 52/22.

Sericinellus of night & of whom (*Crambus*) ~~53/4~~ 53/4

quig-clius of whom (*Crambus*) 53/5

densaria of whom (*Remonia*) ~~53/11~~ 53/11

nubiculana of whom (*Ancylorhexa*) ~~53/15~~ 53/15

Lozogramma of whom (*defugaria*) ~~53/32~~ 53/32

Exatima of whom (*Semicaea*) 53/25

Smilacris of whom (*pannonica*) 53/32 (*junilana*)

jenlana of whom (*Smilacris*) 53/34

Casuarina of whom (*Melanoma*) 53/35.

feruginea of whom (*Crocota*) 53/35

onionids how spell & of whom (synth no) 82/26 84/2
Durocheina of whom Peroté (peropatalis) 85/14
exsuccatus of whom (arambus) 88/9
inimicus ♀ right via ~~via~~ (Monoleuca) 88/15
melaleuca ♀ right. (Tortrix) 88/3.
Oultonii of whom (Pterogyia) ~~88~~ 87/6
dubilaria ♀ of whom (Scalotia) 87/11
Rheum aptera ♀ right ♀ of 11 sub (Larv. trita) 88/7
runiculata of whom (Rheum ~~runica~~ aptera) 88/9.
Retrophora ♀ right spell (populata) 88/18
~~Retrophora~~
Lecontei of whom (Callimorpha) 91/15

Cytosia of whom (elegans) 92/5

Saccatella of whom (Lionelia) 94/3
boreata of whom (Sarcia) 94/12
pseudolemaecia of whom ~~runica~~ (runica-stalae) 99/21

diversata of whom (Carepeta) 96/11
ferruginea of whom (Euclea) 96/17
rufipolia ♀ of whom (Leptochus) 96/21

bursaria of whom (Cateron) 98/24

gemmatella ♀ of whom (Alonca) 100/7



Plate LXXI. (71)

1. ♀	<i>Catocala</i> (Schr)	<i>formosa</i> (G&P P&S.P. 6/8 27. pl 4 fig 5. 71 75.	114. 39.
2. ♀	do	<i>boeia</i> do . 22 fig 1.	do 116. 39.
3. ♀	do	<i>gracilis</i> (Edwards)	709. 115. 39.
4. ♀	do	<i>neogama</i> (S&A pl 88) P&S.P. 4. 27	709. 115. 39.
5. ♀	<i>Apateia</i> (Part)	<i>angulica</i> (Gr)	709. 76. 39.
6. ♂	<i>Argemone</i> (Swep)	<i>alcolaria</i> (Swen)	709. 129. 39.
7. ♀	<i>Catocala</i> (Schr)	<i>subnata</i> ♂ (Gr)	709. 116. 39.
8. ♀	<i>Plusia</i> (Coh)	<i>arcuata</i> (Gr)	709. 110. 39.
9. ♀	<i>Cidaria</i> (Tril)	<i>atracolorata</i> (Gr) ♀	709. 138. 39.
10. ♀	<i>Catocala</i> (Schr)	<i>piatrix</i> (Gr)	709. 116. 39.
11. ♀	<i>Aechthya</i> (Clem)	<i>punctipennis</i> (Clem) (Ill. M. Walsh)	160. 39.
12. ♀	<i>Aechthya</i> (Swen)	<i>zoni</i> (S&A) <i>Gortyna</i> (Harr) <i>sandax</i> (Swen)	709. 99. 39.
13. ♀	<i>Eustixis</i> (Hüb)	<i>popula</i> (Hüb) 5472	709. 60. 39.
14. ♀	<i>Sisyra</i>	<i>incana</i>	
15. ♀	<i>Sisyra</i>	<i>incana</i> (Schr) (Swen)	709. 73. 39.

Sisyra of Grote how sp. 11/14



T. Flower

Plate LXXII (72)

1	J. Platynotia (Pack)	parthenos (Harr)	coll of M. Grote	N.Y.	h 62.	59.
2	S. Leprosia (Gr)	varifasciata (M)	" "	N.Y.	h 41.	59.
3	Haemorrhagia (GHR)	gracilis. (GHR)	Sevia, Fal "	N.Y.	h 41.	59.
4	S. Endropia (Guen)	texturaria ♀ (GHR)	coll of M. Grote	N.Y.	h 129.	59.
5	Batis (Lat et Smet)	elascopalis (Muls)	" "	N.Y.	h 125.	59.
6	Parorgyia (Pack)	obliquata ♀ (GHR)	" "	N.Y.	h 71.	59.
7	10. v. (Smet & V)	flavidalis ♀ (Guen)	" "	N.Y.	h 125.	59.
8	Parorgyia (Pack)	varianca ♂ (GHR)	" "	"	h 71.	59.
9	"	parallia. ♀ (GHR)	" "	"	h 71.	59.
10	"	virtonii. ♀ (GHR)	" "	"	h 71.	59.
11	"	leucophaea ♀ (Guen)	" "	"	h 71.	59.
12	Batis (Smet, et)	citrina. (GHR)	" "	"	h 125.	59.
13	"	foeda. (GHR)	" "	"	h 125.	59.
14	Catocala (Muls)	serena. (GHR)	" "	"	h 116.	59.
15	"	heliozani. (GHR)	" "	"	h 116.	59.
16	"	heliozani ♀ (GHR)	" "	"	h 116.	59.
17	Batis (Smet, Lat)	ventralis (GHR)	" "	"	h 125.	59.
18	"	stularia (GHR)	" "	"	h 125.	59.
19	"	signatalis. (GHR)	" "	"	h 125.	59.

is Batis of Smet on of Lat. 72/7. V.
ask Grote.



- 4 ♀ *Pantana* (Walk) *minista* (Gerr) *Duga rose* (Oels) Guk, 724 h 79 26.
 2 ♀ " " *angusii* (Gr) " " " " " " 79 29.
 3 ♀ *Helmota* (Gr) *cupulata* (Gr) " " " " " " 136 29.
 4 ♀ *Helmota* (Gr) *elaborata* (Gr) " " " " " " 136 19.
 5 ♀ *Haplax* (Hub) *albopunctata* (Gr) " " " " " " 140 29.
 6 ♀ *Baxteria* (Hub) *albavittata* (Gerr) NY, p. 135 28.
 7 ♀ *Diphthera* (Sch) *gracilis* (Gr) NY, p. 46 28.
 8 ♀ *Diphthera* (Sch) *clavata* (Gr) NY, p. 59 28.
 9 ♀ *Scorpaena* (Curtis) *distorta* ♂ & ♀ " " " " 143 28.
 10 ♀ " " " " " " " " " " 143 28.
 11 ♀ *Scorpaena* (Curtis) *basalis* (Hub) *ploderata* (Herr) (over *aperta*) " " " " 143 28.
 12 ♀ *Scorpaena* (Curtis) *communis* (Gr) " " " " " " 125 28.
 13 ♀ *Rales* (Fret Lat) *gracilis* (Gerr) " " " " " " 125 28.
 14 ♀ *Catantop* (Walk) *subjecta* (Walk) ♀ Guk " " " " " " 60 28.
 15 ♀ *Pseudotyphania* (Grote) *exultatrix* (Gerr) *Lacania* " " " " " " 125 28.
 16 ♀ *Eupithecia* (Clerk) *maculata* ♀ Gr " " " " " " 125 28.
 17 ♀ *Crocota* (Gerr) *maculata* " " " " " " 13 28.
 18 ♀ *Crocota* (Gerr) *maculata* ♀ (Gerr) " " " " " " 13 28.
 19 ♀ *Crocota* (Gerr) *maculata* ♀ Gr " " " " " " 61 28.
 20 ♀ *Crocota* (Gerr) *maculata* ♀ (Gerr) " " " " " " 171 28.
 21 ♀ *Euclea* (Hub) *quercus* (Part) *monitor* " " " " " " 72 28.
 22 ♀ *Parasa* (Munro) *viridis* (Packard) *Chlorocla* " " " " " " 72 28.
 23 ♀ *Septicula* (Wern) *Hyden* *sagmella* (Wern) *Cat leaf miner* " " " " " " 127 28.
 24 ♀ *Calalega* (Hub) unnamed *leaf grape & leaf poplar* " " " " " " 132 28.
 25 ♀ *Calosper* (Fret) *costalis* (F. & M.) *Pyralis* *unidentaria* Chicago p. 125 28.
 26 ♀ unnamed *on Paulonia imperialis* " " " " " " 171 28.
 27 ♀ unnamed *on Golden rod* " " " " " " 171 28.

Figures marked 28. Taken by permission of Mr. Loeb, from the initials in the proceedings of the Entomological or Philocephala.

Lacania of whom (*Pseudotyphania exultatrix*) 73/18
monitor of whom (*Euclea monitor*) 73/21
Calosper of whom (*Parasa viridis*) 73/22
Chlorocla of whom (*Calosper costalis*) 73/25

Crocota is this right or is *Crocota* 73/18
monitor 73/21 of whom



S. S. Cur.

Plate LXXIV (74)

1. <i>Eurygaster</i> (Deh)	<i>rosaria</i> (Grt)	Penn	p 129 x	58
2. <i>J. Boarmia</i> (Fied)	<i>sulphurea</i> (Pack)	Penn	p 175	58
3. <i>J. Antephone</i> (Pack)	<i>sulphurea</i> (Pack)	Penn	p 175	58
4. <i>J. Mamestra</i> (Ock)	<i>laudabilis</i> (Guen)	Penn	p 101	58
5. <i>J. Stucardia</i> (Pack)	<i>aurata</i> (Pack Long)	(Penn)	<i>erecta</i> var	11 a p 60 58
6. <i>J. o. o. o.</i>	<i>chrydota</i> (Gr) ♀			penn p 75 58
7. <i>J. unnamed</i> ?				Penn p 175 58
8. <i>J. Callima</i> (Clam)	<i>argentivinctella</i> (Clam)			Penn p 160 58
9. <i>J. erolia</i> (Grt)	<i>pallida</i> (Pack)			penn p 68 58
10. <i>J. Arctia</i> (Sch)	<i>brachii</i> (Grt)			Penn p 68 58
11. <i>J. Arctia</i> (Sch)	<i>figurata</i> (Grt)			penn p 63 58
12. <i>J. Epucollis</i> (Sch)	<i>virginialis</i> (Pack)	<i>Arctia</i> (Sch)		Penn p 65 58
13. <i>J. do</i>	do	do	do	do do
14. <i>J. Arctia</i> (Sch)	<i>nevadensis</i> (Grt)			Penn p 65 58
15. <i>J. Melipotis</i> (Sch)	<i>missa</i> (Grt)			penn p 104 58
16. <i>J. dichotoma</i> (Guen)	<i>umbellata</i> (Guen)	In Hitt		penn p 95 58
17. <i>J. Callidapteryx</i> (Gr)	<i>hyppentalis</i> (Gr)		do	penn p 85 58
18. <i>J. Monoleuca</i> (Gr)	<i>summitaria</i> (Grt)			penn p 72 58
19. <i>J. Platysmia</i> (Hy)	<i>californica</i> (Walk)		<i>Euryale</i> (Bous)	penn p 88 58
20. <i>J. Tarache</i> (Houb)	<i>metallica</i> (Grt)		<i>delicta</i> (Grt)	penn p 116
21. <i>J. do</i>	do	do	do	do do

delicta sp. of whom 74/20 of
 4 121. 58



G. Platero

Plate LXXV (75)

1. *Lilophonta* (Burm) *ella* ♂ (Senn) *Lapara* (Walk) p. 53. Pl.
2. *L. de* — *de* — *de* ♀ *de* — *de* — *de* — pa 53. Pl.
3. *Sphinx* — (Senn) *uscitosa* (Lam) ————— pa 51. Pl.
4. *Eryx* — (Hüb) *cyathris* (Walk) ————— p 48. Pl.
5. *Sivakula* (Burm) *obscura* (ab) — *avici* (Walk) p 53. Pl.
6. *Cergus* — (Hüb) *labruscae* (Senn) *Philampelis* (Harr) p. 14. Pl.
7. *Callopus* — (Hüb) *bian* (Senn) *Sphinx* (Senn) p. 22. Pl.
- } *Macroglossa* (G&C) —
8. *Xanthosetia* (S&P) *allicomana* (Lam) PE&P. p. 5. 137. *Tentrix* (Lam) p. 138. Pl.
9. *Aborica* — (ab) — *quinquecaudata* (Padings) PE&P. 1. 277. Pl. 55. Pl.



F. Hübner

1. *J. Phloros* (Walk) *venosa* (Walk) ? *Clonocha* (Hüb) pa p. 97. 58.
2. *J. theinotica* (Hüb) *temais* (Grun) pa p. 97. 58.
3. *J. Phytaria* (Grun) *pudosa* (Grun) pa p. 96. 58.
4. *J. Buephos* (Hüb) *inimica* (Pa k) *archeiris* pa p. 113. 58.
5. *J. Eusphelates* (Pa k) *spinataria* (Pa k) (R. L. S. S.) pa p. 13. 58.
6. *J. Chalc* (Grun) *aguelus* (S. Clem) pa p. 128. 58.
7. *J. Sorytales* (Grun) *vilencata* (Pa k) pa p. 133. 58.
8. *J. Botia* (S. S.) *reversalis* (Grun) *Mecyra* ka p. 126. 58.
9. *J. Synectis* (Grun) *graphica* (Grun) pa p. 112. 58.
10. *J. Plusia* (Grun) *albicola* (Grun) ka p. 110. 58.
11. *J. Lypanthecia* (Grun) *sqwarina* (Grun) *Anthecia* (Bd.) ka p. 107. 58.
12. *J. Xyleutes* (S. S.) *ambrosii* (Grun) *Soraiso Xystus* ka p. 93. 58.
13. *J. Plusiodonta* (Grun) *compressipennis* (Grun) pa p. 111. 58.
14. *J. Staganis* (Grun) *pa p. 131. 58.*
15. *J. H. p. 94. 58.*
16. *J. unnamed* ? (coll. of M. Redings) ka p. 170. 58.
17. *J. Catocala* (Sch) *relicta* (Walk) ka p. 116. 58.
18. *J. unnamed* ? ka p. 173. 58.
19. *J. Lyganthecia* (Grun) *Packardii* (Grun) *anthecia* (Grun) ka p. 108. 58.
20. *J. Anisochia* (Steph) *oparsella* (Grun) ka p. 145. 58.
21. *J. inarta* (Hüb) *conligera* (Grun) pa p. 107. 58.

Archeiris of whom 76/9^{sa} *Plusia*
Mecyra of whom 76/8^{sa} *Plusia*



F. M.

- 1 *Thelcteria* Zell pupula (Zell) Pa p. 188 75
- 2 *Pterichroma* (Step) dorsisignata Clem pa p. 121 75
- 3 *Sorotauca* (Step) purpurana (Wm) *Tortua* (Linn) pa p. 138 75
- 4 *Sorotauca* (Step) frontellata (Wm) pa p. 138 75
- 5 *Nambus* (Wab.) uratellus — pa p. 129 75
- 6 *Senecoris* (Fret) gratiana (Clem) pa p. 141 75
- 7 *do do do do do do*
- 8 unnamed ; p. 175 pa p. 175 75
- 9 *Terus* (Fret) gallicus (Wm) Pa p. 141 75
- 10 *Brachyoma* (Wm) unipunctata (Wm) pa p. 128 75
- 11 *Clasigma* (Wm) albula (Rob) pa p. 175 75
- 12 *Dasydera* (Kam) newmanella (Clem) p. p. 167 75
- 13 *Uretila* (Wm) unnamed (Fret) Colorado Pa p. 161 75
- 14 *Terus* (Linn) tapetre a (Horr) Pa p. 149 75
- 15 *Senecoris* (Fret) mutabiliana (Clem) pa p. 141 75
- 16 *Sorotaphes* (Wm) flavicostella (Clem) Pa p. 154 75
- 17 *Deschida* (Linn) longicauda (Clem) pa p. 135 75
- 18 *Ulyptis* (Cock) willifrons Gr pa p. 104 75
- 19 unnamed (Wilson) virginia pa p. 175 75
- 20 *Ingerona* (Linn) crocotaarica (Wm) (Southern Bar) Pa p. 128 75
- 21 *Salvatoria* (Fret) unialis Gr pa p. 108 75
- 22 *Eryra* (Fret) longis (Bily) Georgia p. 110 75
- 23 *Eryra* (Fret) somocrea (Wm) (on leaf of *Senecoris*) Georgia p. 110 75
- 24 *Stobia* (Pack) ribearia (Fitch) Pa p. 129 Utopia
- 25 *Lycopanthesia* (Cock) uscyra (Wm) (Utopia) (Bdu) Ind. p. 108 75
- 26 *do do marginata do do do do*
- 27 *Seneptheca* (Wm) unguiculata (G&R) Ind. p. 124 75
- 28 *S. tetraeis* (Wm) coloradaria (G&R) p. 129 75
- 29 *S. Cedaria* (Fret) comatula (G&R) p. 135 75
- 30 *S. Drepanodes* (Wm) puber (G&R) p. 85 75
- 31 *do do varus* (G&R) p. 85 75
- 32 *do do aquosus* (G&R) p. 85 75
- 33 *do* unnamed ; Ind. p. 175 75
- 34 *S. Tortrix* (Linn) pallida (Pack) *Lore* (Linn) p. 130 75
- 35 *Endropia* (Wm) vinosaria (G&R) p. 129 75
- 36 *do* *Endropia* (Wm) aryalaria (G&R) p. 129 75
- 37 *do* *Endropia* (Wm) vinosaria (G&R) p. 129 75
- 38 *S. Lili-tua* (Lell) agrimonella (Clem) pa p. 135 75
- 39 *Hamabryas* (Clem) basitellata (Clem) pa p. 157 75
- 40 *do* *Endropia* (Fret) pallidaria (G&R) p. 129 75
- 41 *do* *Endropia* (Fret) subtricolor (G&R) p. 129 75
- 42 *do* *Endropia* (Fret) tibularia (G&R) p. 129 75

Figures from the Col. Hession by permission. Spec marked G&R from the foot

Auratellus of whom (Gravies) p. 77/3
Porosa — of whom (Terus) p. 77/9
Lycopanthesia of whom p. 77/25
Ellipter of whom — p. 77/24
Marginato of whom p. 77/26

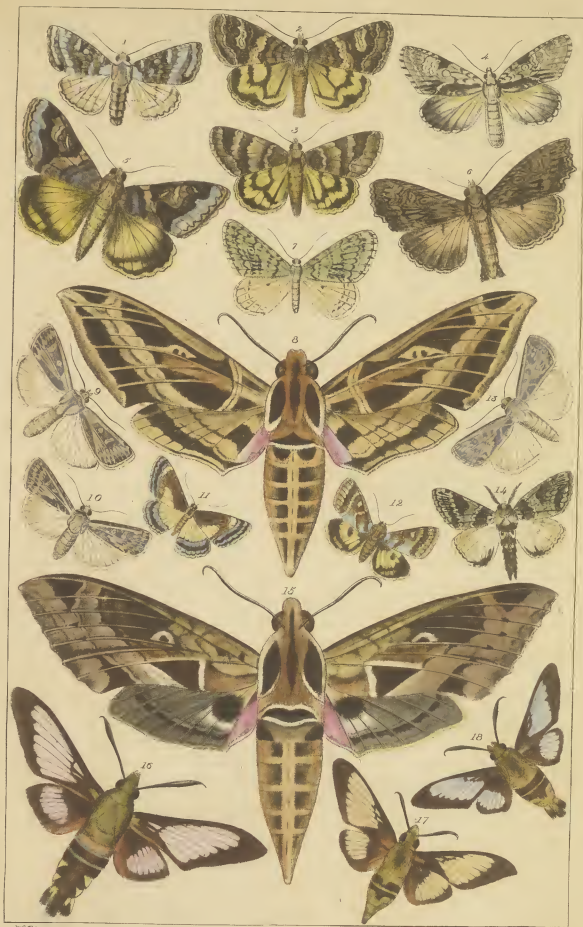


J. Flower

Plate LXXVIII (78)

- 1 ♂ *Mamestra* (Ck) *br. leghamii* (G&R) p. 10. 54.
 2 ♀ *S. m. da* (Guen) *hudsonica* ♂ (G&R) p. 113. 54.
 3 ♂ *do do do* ♀ (G&R) p. 113. 54.
 4 ♂ *Aeromyza* (Ck) *junonalis* (G&R) p. 98. 54.
 5 ♀ *Uelia* (Hub) *nigrescens* ♀ (G&R) p. 118. 54.
 6 ♀ *Xylophasia* (Sleph) *vulgaris* ♂ (G&R) p. 110. 54.
 7 ♂ *Scaphura* (Swils) *geminata* ♂ (G&R) p. 124. 54.
 8 ♂ *S. Lupo* (Hub) *linnei* (G&R) *Sphinx ulis* (L) *cram* *Philampelus* Harr ♀
 G&R p. 146. 54.
 9 ♀ *Agrotis* (Ck) *quadridentata* ♂ (G&R) p. 103. 54.
 10 ♀ *do do do do* ♀ *do do do*
 11 ♀ *Heliozoma* (G) *cyadata* ♀ (G&R) p. 36. 54.
 12 ♀ *Heliothis* (Ck) *spinosa* ♂ (Guen) p. 107. 54.
 13 ♀ *Agrotis* (Ck) *ocatorosa* ♀ (G&R) p. 103. 54.
 14 ♀ *Catocalys* Pack) *apicalis* ♂ (G&R) p. 82. 54.
 15 ♀ *Philampelus* (Harr) *posticatus* ♂ ♀ (see *Grossmole*) p. 46. 54. (not in G&R)
Sphinx ycaon (cram) *Phalus* *lycaon* (Hub) *kenora* (Hub) *satalidia* Harr
 16 ♀ *Haemoria* *hazua* (G&R) *frondensis* (G&R) *desia* (Fab) *Sphinx* *lema* p. 41. 54.
 17 ♀ *do do do do* *neffaloensis* (G&R) ♀ " " "
 18 ♂ *do do do do* *do do do do* (G&R) ♂ " " "

from Mess Grole & Robinson by permission of M. Grole



J.C. Ferrer.

Plat. LXXXIX 79)

1. *Acanyeta* (Ock) *noctivaga* ♂ (GWR) p. 18. 58.
 2. *Acanyeta* (Ock) *texana* ♀ (GWR) p. 103. 57.
 3. *Acanyeta* (Ock) *cinerea* ♀ (GWR) microcaelia (GWR) 95.
 4. *Acanyeta* (Ock) *afflicta* ♀ (GWR) p. 97. 56.
 5. *Raphia* (Scub) *pratensis* ♀ (GWR) p. 105. 58.
 6. *Raphia* (Scub) *abrupta* ♀ (GR) p. 105. 58.
 7. *Scopelosoma* (Curtis) *matkari* ♀ (GWR) dichogramma p. 98. 58.
 8. *Scopelosoma* (Ock) *fulvipes* ♂ (GR) p. 102. 56.
 9. *Scopelosoma* (Curtis) *repulenta* ♂ (GWR) dichogramma p. 98. 58.
 10. *Sontyna* (Ock) *curvata* ♂ (GWR) p. 99. 58.
 11. *Lochmaeus* (Doub) *maritimus* ♀ (GWR) p. 24. 58.
 Heterocampa (Doub) *subalbicans*
 12. *Notolenta* (Ock) *stragula* ♂ (GR) p. 51. 58.
 13. *Notolenta* (Ock) *basisticta* ♂ (GWR) p. 51. 58.
 14. *Otenuche* (Kirby) *rossi* ♂ (Gr) p. 59. 58.
 15. *Prophraea* (Pack) *vermiculata* ♂ (Gr) p. 59. 58. *Calliccia*
 16. *Lappanthracia* (Guen) *arcifera* (Guen) *Anthracia* (Sds) p. 107. 58.
 17. *Arctia* (Scrib) *anna* (Gr) p. 63. 58.
 18. *Arctia* (Scrib) *peraphone* (Gr) p. 63. 58.
 19. *Arctia* (Scrib) *naia* (Guen) var decorata (Saunders) p. 63. 58.

From Mr. Gate by permission in B. Ent. Soc. Philadelphia

Subalbicans of whom 79/11

maritimus of whom *Lochmaeus* *maritimus* 79/11

dichogramma of whom (*Scopelosoma* *repulenta*) 79/9.

calliccia of whom *Prophraea* *vermiculata* 79/14

LXXIX. 79.



Plat LXXX (50)

1	<i>N. Noctua</i> (Linn)	<i>brunneicollis</i>	♂ (Gr)	p. 104. ♂♂	
2	♂	<i>do do</i>	<i>alternata</i>	♀ (Gr)	p. 104. ♂♂
3	♂	<i>do do</i>	<i>cupida</i>	♀ (Gr)	p. 104. ♂♂
4	♂	<i>do do</i>	<i>vitifera</i>	♀ (Gr)	p. 104. ♂♂
5	♂	<i>Nemophila</i> (Stål)	<i>geometrica</i>	(Gr)	p. 59. ♂♂
6	♀	<i>Synela</i>	<i>Guon howlandi</i>	♀ (Gr)	p. 113. ♂♂
7	♂	<i>Colostasy</i> (Gr)	<i>Uplonoides</i>	♂ (Gr)	p. 82. ♂♂
8	♂	<i>Alypia</i> (Hüb)	<i>melingsii</i>	♂ (Gr)	p. 57. ♂♂
9	♂	<i>Amphidasy</i> (Trot)	<i>Cupidaria</i>	♂ (Gr)	p. 130. ♂♂
10	♀	<i>Helioconampa</i> (Doub)	<i>Uplonoides</i>	♀ (Gr)	p. 83. ♂♂
11	♂	<i>Leucocampa</i> (Gr)	<i>karadoxus</i>	♂ (Gr)	p. 109. ♂♂
12	♂	<i>Epione</i> (Hüb)	<i>Aquilonata</i>	♂ (Gr)	p. 127. ♂♂ <i>Antiqua</i>
13	♀	<i>Heliocheilus</i> (Gr)	<i>karadoxus</i>	♀ (Gr)	p. 109. ♂♂
14	♀	<i>Calyptra</i> (Lep)	<i>bilineata</i>	♀ (Gr)	p. 85. ♂♂ <i>Edaphoxys</i> (Grote)
15	♀	<i>Lygranthacia</i> (Gr)	<i>brevis</i>	♀ (Gr)	(var) p. 107. <i>Anthaxia</i> (Bois)
16	♂	<i>do do do do</i>	<i>do do do do</i>	♂ (Gr)	do p. 107. <i>do do</i>
17	♀	<i>Guleucyptera</i> (Gr)	<i>camatilis</i>	♀ (Gr)	p. 108. ♂♂
18	♀	<i>Lygranthacia</i> (Gr)	<i>noctis</i>	♀ (Gr)	p. 108. ♂♂ <i>Anthaxia</i> (Bois)
19	♀	<i>do do do do</i>	<i>hackerdi</i>	♀ (Gr)	p. 115. ♂♂ <i>do do</i>
20	♂	<i>do do do do</i>	<i>moctua</i>	♂ (Gr)	p. 108. ♂♂ <i>do do</i>
21	♀	<i>Catocala</i> (Sch)	<i>clintoni</i>	♀ (Gr)	p. 114. ♂♂
22	♂	<i>do do do do</i>	<i>subnata</i>	♂ (Gr)	p. 116. ♂♂
23	♂	<i>Hebealus</i> (Linn)	<i>gracilis</i>	♂ (Gr)	p. 94. ♂♂
24	♂	<i>do do do do</i>	<i>funcher</i>	♂ (Gr)	p. 94. ♂♂

from Mr. Erskine's permission in P^r Ent Soc Phila adificia

Antiqua of whom p. 80/12



Plate LXXXI. (81)

1. *Liatana* (Walk) *perspicua* (LVR) p. 50 56.
 2. *Platyserura* (Pack) *purcella* (Pack) (GFR) p. 54 55.
 ♀ *curva* Pack PeS.F. 3. 373. (Lar. Pl. 164)
 3. *Catocala* (Schr) *ponderosa* ♀ (GFR) p. 115 54.
 4. *— de — de praeclara* ♂ (GFR) p. 115 54.
 5. *— de — de scutellans* ♂ (GFR) p. 115 54.
 6. *— de — de tralercula* ♂ (GFR) p. 114 54.
 7. *Melipotis* (Hub) *pallescens* ♀ (GFR) p. 115 54.
 8. *Silomia* (Hub) *katania* (GFR) p. 128 54.
 9. *Casylophes* (Pack) *utona* — (Pack) p. 82 54.
 10. *Crocota* (Hub) *treatii* — (Gr) p. 61 54.
 11. *Crastonia* (Hub) *agricola* — (Gr) p. 117 54.
 12. *Pachardis* (Gr) *ocellata* — (Gr) p. 73 54.
 13. *Coionula* (Blatt) *pandora* — (Becke) p. 85 54.
 14. *Estelia* (Hub) *pulcherrima* (Gr) p. 118 54.
 15. *Plusia* (Och) *formosa* (Gr) p. 95 54.

From M. G. G. by permission



Plate LXXXII. (82)

- 1. *Callimorpha* (Lat) *contigua* (Doub) Saunders Canada p. 62 89.
- 2. *Archa* (Sch) *aria* (Saunders) — do — do p. 63 89.
- 3. *do* — do — do — do — do p. 63 89.
- 4. *Plusia* (Och) *melucorum* (Guen) — do — do p. 111 89.
- 5. *Cucullia* (Och) *intermedia* (Speyer) — do — do p. 106 89.
- 6. *Microrcaea* (Guen) *fragilis* (Guen) — do — do p. 97 89.
- 7. *Hydracia* (Och) *lorca* — Guen — do — do p. 99 89.
- 8. *Plusia* (Och) *aerocides* (Guen) — do — do p. 108 89.
- 9. *Pyrrhia* (Hüb) *angulata* (Guen) — do — do p. 108 89.
- 10. *Crampus* (Guen) *talidiformis* (Guen) — do — do p. 106 89.
- 11. *Trionophora* (Saunders) *rubrunceum* (Guen) — do — do p. 105 89.
- 12. *Nomophila* (Hüb) *noctuelle* (S.V.) — do — do p. 12. 89.
- 13. *Cyphodactylus* (Zett) *Schlagerei* — do — do p. 148 89.
- 14. *Ditula* (St) *blandana* (Clem?) — do — do p. 139 89.
- 15. *Antithesia* (St) *numbatana* (Clem) — do — do p. 139 89.
- 16. *Crassa* (Hüb) *sulphurana* (Clem?) — do — do p. 139 89.
- 17. *unimoda* (?) Canada p. 176 89.
- 18. *Hadena* (Trot) *liquicolor* (Guen) — do — do p. 100 89.
- 19. *Laphrogyna* (Guen) *insignata* (Doub?) — do — do p. 100 89.
- 20. *Phaenicia* *rimosa* (Beet?) — do — do p. 106 89.
- 21. *Gluphisia* (Bdr) *trilineata* (Pack) — do — do p. 80 89.
- 22. *Joplocama* *formosana* — do — do p. 143 89.
- 23. *Mamestra* (Och) *tubens* (Guen) — *Hadena* (Trot) do — do p. 106 89.
- 24. *Laocampa* (Hüb) *rufipera* (Linne) — do — do p. 106 89.
- 25. *Hadena* (Trot) *levis* (Trot) (peak) *Agrotis* (Och) do do p. 103 89.

From Collections of Mr G. G. Saunders by his permission

- ✓ *Ditula* (St) of whom (*blandana*) 82/14
- ✓ *Antithesia* of whom (*numbatana*) 82/15
- ✓ *Phaenicia* of whom (*rimosa*) 82/20
- ✓ *Joplocama* of whom (*formosana*) 82/22
- ✓ *formosana* of whom (*Joplocama*) 82/22.

LXXX. II. 81.



S. Flower

- 1 *Allyria* (Hub) *langstonii* (Cooper) Saunders Canada p. 56 F.
- 2 *Crampus* (Fab) *sexscotatus* (Fr) do do p. 126 F.
- 3 *Anchylus* (Trot) *argonyx* (cata Fr. do do p. 143 F. (Can Ent 8/20)
- 4 *Crampus* (Trot) *sericinellus* ? do do p. 126 F.
- 5 do do *vulgivagellus* ? (Clem) do do p. 126 F.
- 6 do do *subrotellus* (Vetter) do do p. 126 F.
- 7 *do* do *interrupta* (Guen) do do p. 126 F.
- 8 *unnamed* ? Canada p. 176 F. (Saunders)
- 9 *unnamed* ? Canada p. 176 F. (Saunders)
- 10 *Catocalpa* (Hub) *annulata* (Walk) do do p. 136 F.
- 11 *Nemoria* (Hub) *dorsaria* ? do do p. 131 F.
- 12 *S. leptodes* (Guen) *rubrolinaria* (Pack) do do p. 131 F.
- 13 *unnamed* ? Canada p. 176 F. (Saunders)
- 14 *unnamed* ? Canada p. 176 F. (Saunders)
- 15 *Anchylopera* (Steph) *nubiculana* ? (Saunders. Canada p. 140 F.
- 16 *unnamed* ? — Canada p. 176 F.
- 17 *unnamed* ? Canada p. 176 F.
- 18 *Eurymima* (Guen) *ulconaria* (Guen) Saunders Canada p. 135 F.
- 19 *Citaria* (Trot) *shuttleffi* Saunders Canada p. 135. p. 176 F.
- 20 *unnamed* ? Canada p. 176 F. (Saunders)
- 21 *do* do do do do do
- 22 *do* do do do do do
- 23 *Cloaca* (Curtis) *dorsata* (Pack) *fulvoharia* (Dunoi). Lar feeds on pine.
Saunders Canada p. 136 F.
- 24 *Eufidonia* (Pack) *notataria* (Pack) *fulvoharia* (Trot) p. 122 F.
Saunders Canada
- 25 *Melipotis* (Hub) *limbolaris* (Geyer) Saunders Canada p. 113 F.
- 26 *Eriopus* (Trot) *monophora* (Guen) do do p. 110 F.
- 27 *Eperixis* (Hub) *semilaris* (Hub) do do p. 123 F.
- 28 *Sericaris* (Trot) *permindana* (Clem) *exarctata* do do p. 143 F.
- 29 *Leptina* (Guen) *ophthalma* (Guen) Saunders Canada p. 95 F.
- 30 *Phthalapteryx* (Steph) *intestinata* (Guen) do do p. 135 F.
- 31 *Chorodes* (Guen) *transversata* (Drury) do do p. 127 F.
- 32 *Lozogramma* *defluata* (Walk) do do p. 133 F.
- 33 *Anchylopera* (Steph) *spiraejoliata* (Clem) do do p. 140 F.
- 34 *Smicrotes* *peritana* (R&S 1860.)
Saunders Canada p. 142 F.
- 35 *Melanoma*. (Guen) *Casuarina* (Pack) Canada p. 129 F.
- 36 *Liphthera*. (Ck) *diversans* (Guen) *Charadra* (Walk. Can. p. 97 F.
- 37 *Chorodes* (Guen) *transversata* (Drury) Canada p. 127 F.
- 38 *Crocota*. (Hub) (Trot) *rubicundaria* (Hub) do *perrogata* p. 62 F.
- 39 *Pantographa* (Ledbury) *limata* (GHT) (p. 16 fig 7. *limbata* not his) Can. p. 126 F.

Specimens mostly from collection of Mr. Wm. Saunders of London, Ontario, Canada.

- Sericinella* *iprigit* of whom (Graminea) 83/4
- vulgivagellus* do do do do 83/5
- dorsaria* (*Nemoria*) of whom 83/11
- nubiculana* of whom (*Anchylopera*) 83/15
- Lozogramma* of whom (*Alpharia*) 83/32
- exarctata* of whom (*Sericaris*) 83/28
- melicaris* of whom (*Permindana*) 83/34
- peritana* of whom (see *Smicrotes*) 83/34
- Casuarina* of whom see (*Melanoma*) 83/35
- perrogata* of whom (*Crocota*) 83/38

Crampus of whom 83/38
of whom is ? 83/16



Plate LXXXIV. (84)

1	<i>S. nymphaea</i> (Ck) rosea (Harvey)	Saunders, Canada	p. 177, 75.
2	unnamed? (Ins. Co. on willow?)	do do	p. 177, 75.
3	<i>Hadena</i> (Wet) <i>ellata</i> (Walk)	do do	p. 105, 75.
4	<i>Orthosia</i> (Ck) <i>valla</i> (Gr&K) (pl. 60/17)	do do	p. 104, 75.
5	<i>Cabera</i> (Tred) <i>erythronaria</i> (Guen)	do do	p. 177, 75. (82)
6	unnamed?	do do	p. 177, 75.
7	<i>Orthosia</i> (Ck) <i>eurou</i> (Gr&K)	do do	p. 177, 75.
8	<i>parrygia</i> (Pack) unnamed	do do	p. 177, 75.
9	<i>Hadena</i> (Tred) <i>bridgmanii</i> (Gr&K)	do do	p. 177, 75.
10	<i>Cosmia</i> (Ck) <i>ornata</i> (Guen) (Lar oak July 20)	do do	p. 177, 75.
11	<i>apressonata</i> ^{pl. 60/17} <i>annula</i> (H)	do do	p. 177, 75.
12	unnamed?	do do	p. 177, 75.
13	<i>Leptina</i> (Guen) <i>scabridagyi</i> (Guen)	do do	p. 177, 75.
14	unnamed?	do do	p. 177, 75.
15	unnamed? (Callia Cayenne moth in Texas by Dr Lenoëcum)	do do	p. 177, 75.
16	unnamed?	Saunders, Canada	p. 177, 75.
17	unnamed?	do do do	p. 177, 75.
18	<i>Heliothila</i> (Hüb) <i>harveyi</i> (Gr)	do do	p. 177, 75.
19	<i>Ufeus</i> (Gr) <i>plicatus</i> (Gr)	do do	p. 95, 177, 75.
20	<i>Caripeta</i> (Walk) <i>angustiorata</i> (Walk) (Lar on pine)	do do	p. 177, 75.
21	<i>Heliothila</i> (Hüb) <i>commoides</i> (Guen)	do do	p. 95, 177, 75.
22	<i>Plusia</i> (Ck) <i>stomatella</i> (Gr)	do do	p. 111, 177, 75.
23	<i>Agrotis</i> (Ck) <i>barja</i> (Gr)	do do	p. 105, 177, 75.
24	unnamed?	do do	p. 177, 75.
25	unnamed?	do do	p. 177, 75.
26	<i>Lithophane</i> (Hüb) <i>orinda</i> (Gr)	do do	p. 177, 75.
27	unnamed?	do do	p. 177, 75.
28	unnamed?	do do	p. 177, 75.

Specimens from Mr Wm Saunders London Ontario Co. Canada

Upressonata of whom 84/11
annula of whom 84/26

Many of these specimens were hastily written & therefore should be renamed before publication.



Plate LXXXV. (35)

1	unnamed ?	from Coll of M Saunders Canada	p. 178. 59.
2	<i>Badania</i> (Beh)	<i>chalcidioria</i> (Hul)	do do p. 178 59.
3	<i>Tortrix</i> (Lin)	<i>metalucaria</i> (Walt) ♂	do do p. 178 59.
4	unnamed ?	do do	p. 178 59.
5	unnamed ?	(Oak or Oak)	do do p. 178 59.
6	<i>Corycia</i> (Dip.)	<i>semitarata</i> (Walk)	do do p. 178 59.
7	<i>Sobophora</i> (Curt)	<i>vernata</i> (Pack)	do do p. 178. 59.
8	unnamed ?	do do	p. 178. 59.
9	<i>Crambus</i> (Fab)	<i>excucalus</i> (Zeller)	do do p. 129. 178 59.
10	<i>Calliostira</i> (Hul)	<i>argenti-linea</i> (Walk)	do do p. 110 178. 59.
11	<i>Leptostia</i> (Guen)	<i>concinna macula</i> (Guen)	do do p. 110 59.
12	unnamed ?	(from Michigan)	do do p. 178 59.
13	unnamed ?	do do	p. 178. 59.
14	unnamed ?	(from Midincocum Texas)	do do p. 178 59.
15	<i>Tritotapha</i> (Gr)	<i>chrysellus</i> (Gr)	do do p. 178. 59.
16	do	do do	p. 178 59.
17	<i>Linckenia</i>	<i>peripictalis</i> (Hul)	do do p. 178 59.
18	<i>Molouca</i> (Guer)	<i>semitarsata</i> (Walk) (Lincoecum Texas)	do do p. 72 59.
19	<i>Lagoa</i> (Karr)	<i>crispata</i> (Pack)	do do p. 72 59.
20	unnamed ?	from Michigan	do do p. 178 59.
21	unnamed ?	from Lincoecum Texas.	do do p. 178 59.
22	<i>Phidonia</i> (Fret)	<i>femularia</i> (Walt) (Lincoecum Texas)	do do p. 133. 178 59.
23	do	do do	p. 133. 178 59.
24	unnamed ?	(Lincoecum Texas)	do do p. 178 59.
25	unnamed ?	do do	p. 178. 59.
26	<i>Psycho</i> (Beh)	<i>confederata</i> (Guer) <i>Haloceticus</i> (Pack) <i>flavus</i> Pack	do p. 75 59.
27	unnamed ?	(Lincoecum Texas)	p. 178 59.
28	<i>Tornus</i> (Morr)	<i>roliginosus</i> (Morr) (Texas)	p. 178 59.
29	unnamed ?	(Michigan)	p. 178 59.
30	<i>Enicactis</i> (Karr)	<i>eglanensis</i> (Clem) <i>Andria</i> (Sch) (Lincoecum Texas)	(68)
31	unnamed ?	Ind.	p. 178 59.
32	<i>Anapera</i> (Clem)	unnamed (Lincoecum Texas)	p. 174 59.
33	unnamed ?	(Lincoecum Texas) <i>Nov</i>	p. 178 59.
34	<i>Lepidryas</i> (Gr)	<i>glavens</i> (Gr) <i>Euscirrhopterus</i> } from Lincoecum Texas	p. 57. 59.
35	unnamed ?	(Lincoecum Texas)	p. 178 59.
36	<i>Crocota</i> (Hul)	(do do) unnamed	p. 61 59.
37	unnamed ?	(do do)	p. 178 59.
38	do	(do do)	p. 178 59.
39	<i>Cathena</i> (Walk)	<i>tenuifascia</i> (Harvey) (Lincoecum)	p. 178 59.
40	<i>Remigia</i> (Guen)	<i>latipes</i> ♂ (Guen) (Texas Pecan nut)	p. 178 59.
41	<i>Remigia</i> (hexastylis) (Harvey)	(Texas pecan nut)	p. 117. p. 178. 59.
42	<i>Remigia</i> (Guen)	<i>latipes</i> (Guen) (do do do)	p. 117. p. 178 59.

40 3 in letter from Midincocum called Pecan nuts

metalucaria of which 85/3
excucalus of which 85/4
linckenia of which 85/4
semitarsata of which 85/3



G. S. Davis

Plate LXXXVI (86)

- 1 ♀ *Helio campa* (Doubled) *elongata* ♀ (G&R) p. 84 JS
 2 ♀ *Latana* (Walk) *integerrima* ♀ (G&R) p. 80 JS.
 3 ♀ do do *brunnea* ♀ (G&R) p. 84 JS.
 4 ♀ unnamed ♂ (see p. 106) (JR) p. 179 JS.
 5 ♀ *Orasteria* (W) *mandula* ♀ (G&R) p. 117 JS.
 6 ♀ *Enopla* (Guen) *texonaria* (G&R) p. 139 JS.
 7 ♀ *Galleria* (Fab) *concaea* (Fab) (186) (JS) p. 130 JS.
 8 L.P. *Utetheisa* (Hüb) *bella* (Hüb) *leucophaea* (G&R) (JS) p. 61 JS.
 (Hüb. *ornatrix* a var. (in seed pods of *Crotalaria*)
 9 *Lixneria* (Butl) *exemita* (Hüb) *Sphinx* *seraida* (Harr) (JS) p. 81 JS.
 10 ♀ ~~*Sphinx*~~ ~~*unnamed*~~ (loc.) — ~~JS~~.
 11 ♀ *Harrisimomna* (Gr) *exallata* (Harr) (H) p. 47 JS.
 } *grammophora* (Guen) *taesignata* (Doell) on mountain ash.
 12 ♀ *Sphinx* (Linn) unnamed ♂ p. 52 JS.

- 10 ♀ *Sphinx* (Linn) *unnamed* from Mt. Walter on Ash loc page 52 JS
 11 ♀ *Harrisimomna* (Gr) *sexguttata* (Harris) loc page 77 JS
grammophora (Guen) *taesignata* (Doell) on mountain
 12 ♀ *Sphinx* *unnamed* loc page 52



- | | | | | |
|-------|--|-----------------------------|--------|----------|
| 1. ♀ | <i>Ageria</i> (Coh) <i>haruspica</i> (Fr) | coll of Mr Saunders | Canada | p 179 |
| 2. ♀ | <i>Catocala</i> (Sch) <i>crataegi</i> (Sam) | do | do | p 116 |
| 3. ♀ | <i>Catocala</i> (Sch) <i>polygama</i> (Guen) | do | do | p 179 25 |
| 4. ♀ | <i>Hyperomacula</i> (Zell) <i>multispunctella</i> (Clem) | do | do | p 162 25 |
| 5. ♀ | <i>Grapholitha</i> (Zell) <i>fasciata</i> (Clem) | do | do | p 163 25 |
| 6. ♂ | <i>Parorgyia</i> (Pack) <i>dentonii</i> ♂ | do | do | p 71 25 |
| 7. ♀ | unnamed (Lac. no 840 <i>dux</i> spec ⁿ) | do | do | p 179 25 |
| 8. ♀ | unnamed ♀ | do | do | p 179 25 |
| 9. ♀ | <i>Pecullia</i> (Coh) <i>asteroides</i> (Guen) | do | do | p 106 25 |
| 10. ♀ | unnamed ♀ | do | do | p 179 25 |
| 11. ♀ | unnamed ♀ | do | do | p 179 25 |
| 12. ♀ | <i>Scotosia</i> (Stoph) <i>dubitata</i> | do | do | p 125 25 |
| 13. ♀ | unnamed ♀ | do | do | p 179 25 |
| 14. ♀ | unnamed ♀ | do | do | p 179 25 |
| 15. ♀ | <i>Heliophila</i> (Hüb) <i>pseudorygus</i> (Guen) | coll of Mr Saunders | Canada | p 95 25 |
| 16. ♀ | unnamed ♀ | do | do | p 179 25 |
| 17. ♀ | unnamed ♀ | do | do | p 179 25 |
| 18. ♀ | unnamed ♀ | do | do | p 179 25 |
| 19. ♀ | <i>Cithonia</i> (Hüb) <i>sepioides</i> (Fr) | from a sketch by Mr Sanborn | Mass. | p 89 25 |
| 20. ♀ | unnamed ♀ | coll of Mr Saunders | Canada | p 179 25 |
| 21. ♀ | do do do | do do do | do | p 179 25 |
| 22. ♀ | <i>Leucisota</i> <i>leucisota</i> (Cler) | do | do | p 69 25 |

16. *dentonii* = *dux* ✓ *Parorgyia* 87/6
 17. *dubitata* of which ✓ *Scotosia* 87/12



F. Storer

11
12
13
14
15
16
17
18
19
20
21
22
23
24
25
26
27
28
29

1	<i>I. unnamed</i> ?	from collection of Mr Saunders, Canada	p. 100
2	<i>I. do</i>	do do do do	p. 180 75
3	<i>I. Cedarix</i> (Trel.) <i>hirsellinata</i> (Guen)	do do	p. 135 74.
4	<i>I. unnamed</i> ? (from H. Lindeum, Texas)		p. 130 75.
5	<i>I. Pterophorus</i> (Guen) <i>unnamed</i> do do		p. 161 74.
6	<i>I. unnamed</i> ?	from Mr Saunders, Canada	p. 180 75.
7	<i>I. unnamed</i> ?	do do do do	p. 180 75
8	<i>I. Phegalis</i> (Luh.) <i>strigataria</i> (Minot)	do do do do	p. 180 74
9	<i>I. Rheumaptera</i> (Hüb.) <i>lacustrata</i>	do do do do	p. 180 ..
10	<i>I. Celyria</i> (Hüb.) <i>designata</i> (Hüb.)	do do do do	p. 180 75.
11	<i>I. Semiothis</i> (Hüb.) <i>notata</i> (Pack) (var)	do do do do	p. 180 75.
12	<i>I. do do do do do do do do</i>		p. 180 75
13	<i>I. do do do do do do do do</i>		p. 180 75.
14	<i>I. do do do do do do do do</i>		p. 180 75.
15	<i>I. Semiothis</i> (Hüb.) <i>sp. unnamed</i>	do do do do	p. 180 75.
16	<i>I. Euphydryx</i> (Pack) <i>bilineata</i> (Pack)	<i>foliolyptaria</i> (Lesq)	do do p. 85 75
17	<i>I. Cedarix</i> (Trel.) <i>latitipargata</i> (Trank)	do do do do	p. 180 75
18	<i>I. Pterophora</i> (Hüb.) <i>populata</i> (Guen)	do do do do	p. 180 75.
19	<i>I. Tortrix</i> (Guen) <i>disopunctaria</i> (Clem)	do do do do	p. 138 75
20	<i>I. Grapholitha</i> (Trel.) <i>costimaculana</i> (Clem)	do do do do	p. 143 75
21	<i>I. unnamed</i> ?	do do do do	p. 150 75
22	<i>I. unnamed</i> ?	do do do do	p. 150 75
23	<i>I. Apatela</i> (Hüb.) <i>superans</i> (Guen)	do do do do	p. 180, 95 75
24	<i>I. unnamed</i> ?	do do do do	p. 180 75.
25	<i>I. Abrostola</i> (Cn.) <i>ovalis</i> (Guen)	do do do do	p. 180 75
26	<i>I. Lithophane</i> (Hüb.) <i>unnamed</i> ?	do do do do	p. 180 75
27	<i>I. Hadena</i> (Ck.) <i>pratensis</i> (Guen)	do do do do	p. 180 75
28	<i>I. Lithophane</i> (Hüb.) <i>unnamed</i> ?	do do do do	p. 180 75
29	<i>I. unnamed</i> ?	do do do do	p. 180 75
30	<i>I. Lithophane</i> (Hüb.) <i>valcinareu</i> (Tr)	do do do do	p. 180 75
31	<i>I. Hadena</i> (Ck.) <i>gemina</i> (Hüb.) var <i>rossica</i> (Hüb.)	do do do do	p. 180 75

Rheumaptera of whom, flight of Hüb. (*lacustrata*) 88/9
lacustrata of whom (*Rheumaptera*) 88/9
~~*Pterophora* of whom (*populata*) 88/18~~



Revero

- 4 ♀ Tortrix (Linn) Caryana (Rob) Saunders Canada p. 181 58
 2 ♀ Cordylophora (Hell) nigrididoides (Zuer) do do p. 181 58
 3 ♀ unnamed ♀ do do do p. 181 58
 4 ♀ Megachyia (Gr) deceptri calis (Zeller) do do p. 181 58
 5 ♀ Pyrausta (Walk) ophisalis (Walk) do do p. 123 58
 6 ♀ Tortrix (Linn) purilana (Robinson) unifasciata (Clem) Saunders Canada p. 138 58
 7 ♀ Tortrix (Linn) alisellana (Robinson) do do p. 185 58
 8 ♀ Cataclysta (Walk) annuata (Grav) do do p. 142 58
 9 ♀ Teras (Frat) nigrolina (Col) Saunders Canada p. 141, 161, 58
 10 ♀ unnamed ♀ do do p. 181 58
 11 ♀ Megachyia (Gr) deceptri calis (Zeller) do do p. 181 58
 12 ♀ Phalaena (Guen) carduidactylus (Riley) do do p. 161 58
 13 ♀ Botis (Lef Gr) socialis (Gr) (Gr) unicum Texas p. 125, 181 58
 14 ♀ Botis (Lef Gr) socialis (Gr) Saunders Canada p. 125, 181 58
 15 ♀ Botis (Lef Gr) flavidissimalis (Gr) Lincecum Texas p. 181 58
 16 ♀ unnamed ♀ (very common) Lincecum Texas p. 181 58
 17 ♀ Crocidophora (Ged) serotissima Zeller Saunders Canada p. 181 58
 18 ♀ Grapholitha (Gr) formosana (Clem) do do p. 143 58
 19 ♀ unnamed ♀ do do p. 181 58
 20 ♀ unnamed ♀ Lincecum Texas p. 181 58
 21 ♀ unnamed ♀ Saunders Canada p. 181 58
 22 ♀ do ♀ do do p. 181 58
 23 ♀ do ♀ C. Lodge. N.Y. p. 181 58
 24 ♀ do ♀ Saunders Canada p. 151 58
 25 ♀ Remigia (Guen) helvagei (Gr) Saunders Canada p. 123 58
 26 ♀ Alfeu (Gros) unnamed ♀ do do p. 123 58
 27 ♀ unnamed ♀ do do p. 118, 181 58
 28 ♀ Agrotis (Lef) venerabilis (Walk) do do p. 103 58
 29 ♀ unnamed ♀ do do p. 181 58
 30 ♀ Leptina (Guen) ophthalmica (Guen) do do p. 181 58
 31 ♀ Agrotis (Lef) C. nigrum Linn do do p. 181 58
 32 ♀ Plusiodonta (Guen) compressipalpis (Guen) Lincecum Texas p. 111, 121 58
 33 ♀ unnamed ♀ Saunders Canada p. 151 58
 34 ♀ Homocidena (Bou) benesignata (Harvey) do do p. 112 & 181 58
 35 ♀ Homocidena (Gr) badistrega (Gr) (Honey's oak) do do p. 105 & 181 58

83
 Homocidena
 Botis
 Cataclysta
 Cordylophora
 Crocidophora
 Grapholitha
 Megachyia
 Phalaena
 Pyrausta
 Tortrix
 Teras
 Plusiodonta
 Homocidena
 Homocidena
 Homocidena



F. H. Guerin

1. *S. nemophila* (Stph) ciconia (G&R) ♂ G&R fig. in pl. p. 63. 55
2. *S. arctia* (Schr) ? achaea (G&R) ♀ do p. 63. 55.
3. *S. arctia* (Schr) dahurica (Bd) ♂ do p. 63. 55.
4. *S. arctia* (Schr) obliquata (G&R) ♂ ~~arctia~~ p. 63.
- 5
45. *S. lygia* (Hub) depressa (G&R) ♀ p. 57.
5. *S. Skidea* (G&R) obliquata (Bd) ♀ ~~arctia~~ p. 55.
6. *S. Alcyia* (Hub) torquini (G&R) ♂ ♀ p. 59. 54.
7. *S. Nemophila* (Stph) caespitosa (G&R) ♂ G&R p. 65. 55.
8. *S. unnamed* ♀ from a Crocker Kansas p. 181. 55.
9. *S. Botis* (Lat in G&R) cinerosa (G&R) ♂ p. 125. 55.
10. *S. arctia* (Schr) ? achaea (G&R) ♂ p. 63. 55.
11. *S. unnamed* ♀ in xxxvi/4. Ind. p. 181. 55.
12. *S. Alcyia* (Hub) sacramento (G&R) ♀ p. 57. 55.
13. *S. Alcyia* (Hub) marginosa (G&R) ♀ p. 57. 55.
14. *S. Calymonpha* (Lat) unnamed (from Crocker Kansas) p. 65. 55.
15. *S. homophysa* (Lad) albolineata (G&R) ♀ p. 163. 55.
16. *S. Botis* (Lat in G&R) diffusa (G&R) ♂ p. 125. 55.
17. *S. melipotis* (New) jucunda (Hub) from a Crocker Kansas p. 181. 55.
18. *S. Botis* (Lat in G&R) unimaculata (G&R) *Asopia* (G&R) ♀ p. 123. 55.
19. *S. Dryocampa* (Harr) { *alba* (G&R) (Missile Hull rubicunda (Lar) p. 51. 55.
var
20. *S. Sabatara* (Trask) confagui (Trask) *Asopia* (G&R) *unimaculata* (G&R) p. 124. 55.
21. *S. arctia* (G&R) unnamed from a Crocker Kansas p. 125. 151. 55.
22. *S. Stypocomete* (Zell) multipunctata (Clem) p. 145. 55.
23. *S. unnamed* ♀ from L. sinuatum Texas p. 181. 55.
24. *S. Steliosoma* (Stph) congrua (Trask) (Florida Mr. Long p. 67. 55.
25. *S. Chironodes* (Guen) claudiana (G&R) (bred 206, Cuba La Hul L.C. p. 127. 55.
26. *S. Calymonpha* (Lat) rubicosta (Clem) (A Crocker Kansas) p. 62. 55.

Principally from Mess Gode & Robinson collections and Mr Crocker
Texas.



W. H. Edwards

plate XCI (91)

- 7 ♂ *Agrotis* (Och) *murcanula* ♀ (G.R.) p. 103. 58.
 2 ♀ do do *repentis* ♂ do p. 103. 58.
 3 ♀ do do *violaris* ♂ do p. 103. 58.
 4 ♂ do do *genicula* ♂ do p. 103. 58.
 5 ♀ do do *callaris* ♀ do p. 103. 58.
~~6~~
 6. *Hydracca* (Luen) *sera* ♂ do p. 99. 58.
 7 ♂ *Xanthia* (Och) *ralla* ♂ do p. 105. 58.
 8 ♂ *Gortyna* (Och) *speciosa* do do p. 99. 58.
 9 ♂ *Xanthia* (Och) *pita* ♂ do p. 105. 58.
 10 ♂ *Gortyna* (Och) *purpurascata* ♀ do p. 99. 58.
 11 ♂ *unamed* ♀ from L. Sincum Texas p. 102. 58.
 12 ♂ *Lithophane* (Hüb) *capax* ♀ (G.R.) p. 106. 58.
 13 ♂ *Botis* (Lat Tr) *posticata* ♂ do p. 126. 58.
 14 ♀ do do *coloradensis* ♀ do p. 125. 58.
 15 ♂ *Xyrisia* (Och) *bethunei* ♂ do p. 106. 58.
 16 ♀ *Botis* (Lat Tr) *generosa* ♂ do p. 125. 58.
 17 ♂ do do *insularis* ♂ do p. 126. 58.
 18 ♂ do do *murculenta* ♀ do p. 125. 58.
 19 ♂ *Callimorpha* (Sat) *lecontei* ♂ *dandelion* (Saunders) p. 62. 58.
~~20 ♂ *Limnitis* (Fussula)~~
 20 ♂ *Parorgyia* (Pack) *paratilla* (G.R.) (on Rose Md. Aug. p. 182. 58.
 21 Co. do do do do do
 22 ♂ *Limnitis* (L.) *ursula* (Fal. & Cr.) on Willow Mo. p. 24. Edw. p. 31. 58.
 23 ♂ *Agrotis* (Luen) *memosaria* (Luen) (on Fever few) (June 189) p. 131. 58.
 24 ♂ *Sphinx* (Linn) *unamed* (M. Walker Sep. 2. 58) p. 52. 58.

These from — M. G. & Robinson copied by permission

91 / 19 219 Lecontei (Callimorpha) from whom

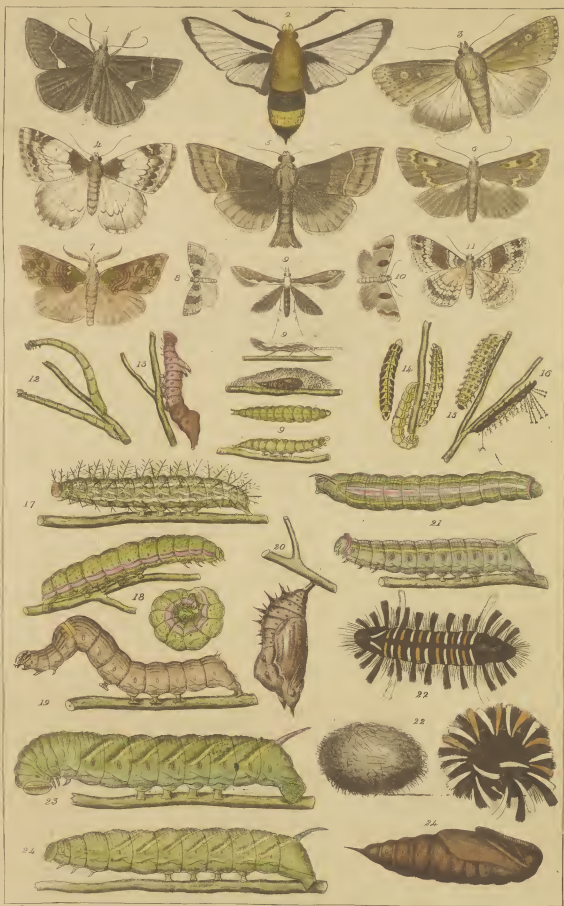


J. Flower

Plate XCII (92)

1. *J. Bomolocha* (Hüb.) *torenta* (G.) (M. Solier DC Aug.) p. 122 JG.
2. *J. Sesia* Fab. *thetis* (GHR) ———— p. 41 JG.
3. *J. unnamed* fm Coll of M. Solier DC Aug. NEW p. 134 JG.
4. *J. malanthia* (G.) *rupeicollata* (Guen) (N. Hamp. CR Dodge) p. 124 JG.
5. *J. unnamed* ? fm Coll of M. Solier DC Aug. ———— p. 182 JG.
6. *J. do do do do* ———— p. 182 JG.
7. *J. Plisiodonta* (Guen) *compressifacies* (Guen). NY. ———— p. 111 JG.
8. *J. unnamed* ? fm NY ———— p. 182 JG.
9. *J. P. Phlella* (Sch.) *lambifemella* (Glen) on Cabbage. Md. *Cerostoma* ^(G.) *brassicella* (Fitch) p. 181 JG.
10. *J. unnamed* ? (coll of M. Solier DC Aug.) ———— p. 182 JG.
11. *J. unnamed* ? (CR Dodge New Hampshire) ———— p. 182 JG.
12. *L. unnamed* ? (on flower of Golden rod Md. Sep.) ———— p. 182 JG.
13. *L. notodontia* unnamed. (oth) on lullow Sep 17 by M. Linton NY. p. 81 JG.
14. *L. unnamed* flower of Golden rod Md. Sep 9 Oct. ———— p. 182 JG.
15. Young Lar of *Platysmia* (G.) *cecropia* (Hüb.) Md. JG. — p. 87 JG.
16. Young Lar of *Atheronia* Haw. *regalis* (Hüb.) (on Sunnatch) Aug. Md. 1887. JG.
17. *L. Grapha* (Hüb.) *comma* (Karr)
 Specimen discolored in Alcohol 1 not coll Edw. pa 18 edw 26 JG
18. *L. unnamed* ? on Cabbage Md. Sep. ———— p. 182 JG.
19. *L. Coelocampa*
19. *L. Calocala* (Sch.) unnamed on Mahonia Oct. JG. p. 116 JG.
20. pup. *Varissa* (F.) *antiopa* (S. & L. Harr) DC. p. 20 Edwards p. 29 JG.
21. *L. Haemorrhagia* (GHR) *frühe* (Karr) on *Saurastinus* DC. (*Sesia* Grav) p. 41 JG.
22. *L. Euclyptus* (Karr) *egae* (Harr) (on milk weed. *Asclepias*) Aug. Md. p. 69 JG.
23. *L. Sphinx* (Guen) unnamed fm M. Walter DC. ———— p. 52 JG.
24. *Pupa Spinea* (Wm.) unnamed do do do ———— p. 52 JG.

✓
Phlella notodontia
Cerostoma brassicella
Sesia thetis
Grapha comma
Calocala



J. H. Cress

Plate XCIII (93)

- | | | | | | | |
|------|--------------------|---------|-----------------------|------------|------------------------------|------------------|
| 1 ♀ | <i>Scaphisoma</i> | (Coz) | <i>lineolata</i> | (Pack) | Massachusetts | p. 80 78. |
| 2 ♀ | <i>Agrotis</i> | (Ock) | <i>sauvica</i> | (Hub) | <i>inermis</i> (Harr) | Mass. p. 102 79. |
| 3 ♀ | do | (do) | <i>messoria</i> | (Har) | <i>cochranii</i> (Riley) | Mass. p. 103 79. |
| 4 ♀ | <i>Heterogenia</i> | (Knock) | <i>shurtleffi</i> | ♀ (Pack) | ----- | Mass. p. 73 78. |
| 5 ♀ | <i>Packardia</i> | (Gr) | <i>elegans</i> | (Pack) | <i>Cyrtosia</i> | Mass. p. 73 78. |
| 6 ♀ | <i>Cidaria</i> | (W) | <i>diversilineata</i> | Hub | ----- | Mass. p. 136 78. |
| 7 ♀ | do | do | do | do | ----- | Mass. p. 135 78. |
| 8 ♀ | <i>Cidaria</i> | (Trot) | <i>populata</i> | (Si?) | ----- | Mass. p. 135 79. |
| 9 ♀ | <i>Samia</i> | (Hub) | <i>columbia</i> | (Smith) | ----- | Mass. p. 87 78. |
| 10 ♀ | <i>Cisthene</i> | (Walk) | <i>subtycla</i> | (Walk) var | <i>Lycoprepia</i> | Mass. p. 60 79. |
| 11 ♀ | <i>Drepanodes</i> | (Guen) | <i>varius</i> | (Grk) | (P) | Mass. p. 85 79. |
| 12 ♀ | <i>Atula</i> | (St) | <i>landana</i> | ♀ (Clem.) | ----- | Mass. p. 182 79. |
| 13 ♀ | <i>Tortrix</i> | (Linn) | <i>alcidana</i> | (Maesch) | ----- | Mass. p. 138 78. |
| 14 ♀ | <i>Grygia</i> | (Ock) | <i>nova</i> | (Fitch) | <i>antiqua</i> (Linn) | Mass. p. 70 78. |
| 15 ♀ | <i>Arctia</i> | (Sch) | <i>quenseli</i> | (Geyor) | var of <i>speciosa</i> Sandb | Mass. p. 63 78. |
| 16 ♀ | do | do | do | do | do | do |

{ no 3 coll of Mr Riley all the rest from
Mr. Sanborn of Boston Mass etc

v 93, 5 *Cyrtosia* of whom (*elegans*)



J. Planch.

Plate XCIV (94)

1. <i>Saracha</i> (Hub.) <i>truncatoides</i> (Guen.) <i>acornalis</i> (Sch.)	Sarborn Mass	p. 118-55
2. <i>unnamed</i> ?	do do	p. 121
3. <i>la</i> (Hub.) <i>ovata</i> (in apple bark) (Sch.)	do do	p. 182-75
4. <i>la</i> (Hub.) <i>ovata</i> (in apple bark) (Sch.)	do do	p. 140
5. <i>la</i> (Hub.) <i>ovata</i> (in apple bark) (Sch.)	do do	p. 114-34
6. <i>la</i> (Hub.) <i>ovata</i> (in apple bark) (Sch.)	do do	p. 132-75
7. <i>Anarta</i> (Hub.) <i>leucocycla</i> (Diff.)	do do	p. 104-75

7. <i>Anarta</i> (Hub.) <i>melanopa</i> (Pack)	do do	p. 104-75
8. <i>Isa</i> (Pack) <i>textata</i> (Pack) (June)	do do	p. 73-75
9. <i>Pachorbia</i> (Fr.) <i>fusca</i> (Pack) <i>Cyrtosis</i> (Pack)	do do	p. 73-75
10. <i>Collophora</i> (Zell.) <i>pubescens</i> (Cm.) (June)	do do	p. 152-25
11. <i>unnamed</i> ?	do do	p. 109-75
12. <i>Pachorbia</i> (Fr.) <i>ultravioletata</i> (Pack) <i>Cyrtosis</i> (Pack) (Loct)	do do	p. 73-75
13. <i>Carvia</i> (Sw.) <i>bonata</i> New Hampshire	do do	p. 101-75
14. <i>Nelephana</i> (Fr.) <i>Lucii</i> (Fr.)	Sarborn Mass.	p. 130-75
15. <i>unnamed</i> ? (from Medford Massachusetts)	do do	p. 182-75
16. <i>Sarvia</i> (Sw.) <i>unnamed</i> (taken amongst June)	do do	p. 128-75
17. <i>do</i> do do do do do do	do do	p. 130-75
18. <i>unnamed</i> ? (from Medford Massachusetts)	do do	p. 102-75
19. <i>unnamed</i> ?	do do	p. 85
20. <i>Lomacodes</i> (Lal.) <i>Y inversa</i> (Pack)	do do	p. 73-75
21. <i>Pseudolimnias</i> <i>nevicostatus</i> (Fr.) C. Knab, U.S.	do do	p. 73, 152-75
22. <i>Coatrix</i> (Sw.) <i>melaleucana</i> (Hub.)	do do	p. 135-75
23. <i>unnamed</i> ?	do do	p. 152-75
24. <i>do</i> ?	do do	p. 152-75
25. <i>Marmostyrax</i> (Pack) <i>Stingulata</i> (Munot) (Main Aug)	do do	p. 182-75
26. <i>Agrotis</i> (C.) <i>Sarva</i> (Hun) (Mount Washington New Hamp.)	do do	p. 102-75
27. <i>Coatrix</i> (Sw.) <i>unnamed</i> Col. & Mr Sarborn Mass.	do do	p. 138
28. <i>do</i> <i>pubescens</i> (Sw.) (<i>Sarva</i> <i>pubescens</i> ?) on Cranberry Aug Mass.	do do	p. 144
29. <i>do</i> <i>pubescens</i> (Sw.) (<i>Sarva</i> <i>pubescens</i> ?) on Summit of Mt Washington	do do	p. 110-75
30. <i>Blasia</i> (Sch.) <i>epigaea</i> (Fr.) Sarborn Mass	do do	p. 111-75
31. <i>Trachea</i> (Hub.) <i>unnamed</i> ? New do do	do do	p. 118, 121-75
32. <i>Cidaria</i> (L.) <i>pubescens</i> (Sw.) (Cm.)? Mount Washington	do do	p. 135-75
33. <i>Agralis</i> (Cm.) <i>occulta</i> (Hub.) (Sarborn Mass.)	do do	p. 102-75
34. <i>Cidaria</i> (Hub.) <i>pubescens</i> (Sw.)? Mount Washington Sarborn	do do	p. 131-75

all on heads from Collection of Mr Sarborn Boston Massachusetts

Saccolia of whom (Iron-bia) 9/3. 11/6. 9 wheel:
loncata of whom (Vansia) 9/18
 present in 2000

pedalimasodes of whom (*nevicostatus*) 9/21.



F. H. W.

1872

Plate xCV (95)

- 1 ♂ unnamed. collection of Dr Palmer Chickasaw nation p. 182 JS
- 2 ♀ Conchylis Treit agassizii (uff Rob) ? do do do p. 182 JS
- 3 ♀ unnamed ? do do do p. 182 JS
- 4 ♀ unnamed (affinis 657 fig 11.) do do do p. 182 JS
- 5 ♀ Acroloithus (Clem) unnamed prob. Texas. p. 58 JS
- 6 ♀ Cirrhololina (Gr) deducta (Morrison) (prob Texas) p. 116 JS
- 7 ♀ Eucyrtura (Harvey) phasma (Harvey) p. 65 JS
- 8 ♀ Synedra (Guen) hawlandii (Gr) p. 115 JS
- 9 ♀ melipotia (Hurr) choreifascia (Harvey) p. ? JS
- 10 ♀ Archia (Sch) persephone (Gr) p. 63 JS
- 11 ♀ unnamed ? p. 182 JS
- 12 ♀ Conchylis (Tr) yunquemaculana (Rob) p. 112 JS
- 13 ♀ Gortyna (Och) nitida (Hull) (Hull & Stalows) p. 99 JS
- 14 Pap. Sphinx (Swinn) chersis (Hal) cinerea (Harr) p. 50 JS
- 15 ♀ Sarcia ? (Hal) unnamur. (Mcl) (Edw^o) p. 41 JS
- 16 C. las. nobis (C) myops (S^{ell}) Smenanthus (Sat) (in M Edwards) p. 47 JS
- 17 ♀ do do do do do do p. 47 JS
- 18 ♀ Lemniscodes ? unnamed (in M Edwards) p. 73 JS
- 19 ♀ do ? do (do) p. 70 JS
- 20 ♀ do ? do (do) p. 73 JS
- 21 ♀ Orapta (Kirby) comma (Harr) (♀ half size) p. 18 Edw. 24 JS
- 22 ♀ do do do do (♂ full size) do Edw. 24 JS
- 23 ♀ red Sphegta (Germ) modesta (Harr.) Smenanthus Lat, (in M Edwards) p. 47 JS
- 24 ♀ (unnamed) do do do do do do
- 25 ♀ (unnamed) do do do do do do
- 26 ♀ Meridamia (Clem) inscripta (Harr) (Clem) (Old specimen) p. 47 JS
- 27 ♀ do do do do (Young Sp) p. 47 JS
- 28 ♀ Sphinx (Linn) cordus (Cramer) p. 46 JS

Probably all new of the State

examined specimens

= 12

?



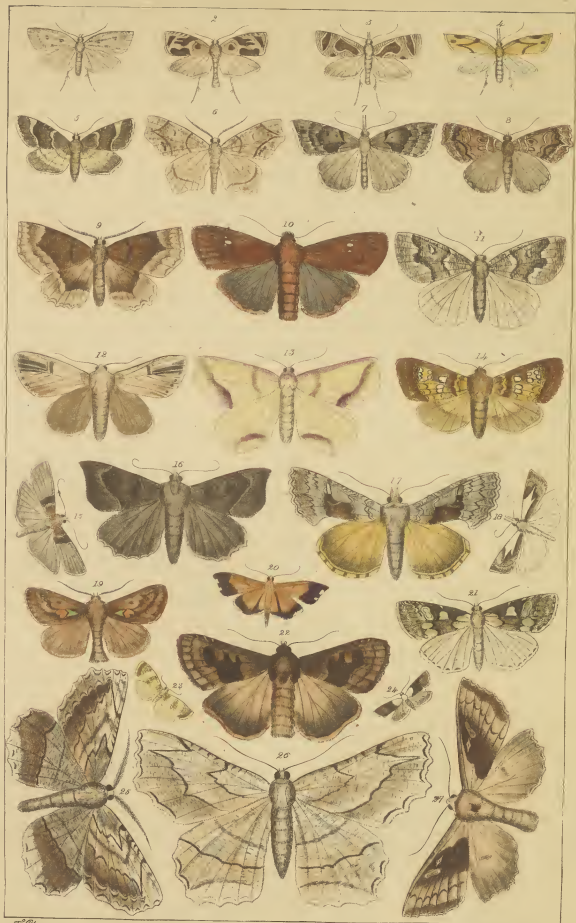
Plate XCVI. 1961

1	unnamed ♀	Collection of Mr Saunders	Canada	183 78.
2	do ♀	do	do	183 78.
3	do ♀	do	do	183 78.
4	do ♀	do	do	183 78.
5	Asopia (Ehrh) olivaris (Guen)	do	do	183 78.
6	Asopia (Ehrh) olivaris (Guen)	do	do	183 78.
7	Asopia (Ehrh) olivaris (Guen)	do	do	183 78.
8	Asopia (Ehrh) olivaris (Guen)	do	do	183 78.
9	Asopia (Ehrh) olivaris (Guen)	do	do	183 78.
10	Asopia (Ehrh) olivaris (Guen)	do	do	183 78.
11	Asopia (Ehrh) olivaris (Guen)	do	do	183 78.
12	Asopia (Ehrh) olivaris (Guen)	do	do	183 78.
13	Asopia (Ehrh) olivaris (Guen)	do	do	183 78.
14	Asopia (Ehrh) olivaris (Guen)	do	do	183 78.
15	Asopia (Ehrh) olivaris (Guen)	do	do	183 78.
16	Asopia (Ehrh) olivaris (Guen)	do	do	183 78.
17	Asopia (Ehrh) olivaris (Guen)	do	do	183 78.
18	Asopia (Ehrh) olivaris (Guen)	do	do	183 78.
19	Asopia (Ehrh) olivaris (Guen)	do	do	183 78.
20	Asopia (Ehrh) olivaris (Guen)	do	do	183 78.
21	Asopia (Ehrh) olivaris (Guen)	do	do	183 78.
22	Asopia (Ehrh) olivaris (Guen)	do	do	183 78.
23	Asopia (Ehrh) olivaris (Guen)	do	do	183 78.
24	Asopia (Ehrh) olivaris (Guen)	do	do	183 78.
25	Asopia (Ehrh) olivaris (Guen)	do	do	183 78.
26	Asopia (Ehrh) olivaris (Guen)	do	do	183 78.
27	Asopia (Ehrh) olivaris (Guen)	do	do	183 78.

Specimens from Collection of Mr Hm Saunders Ontario to Canada

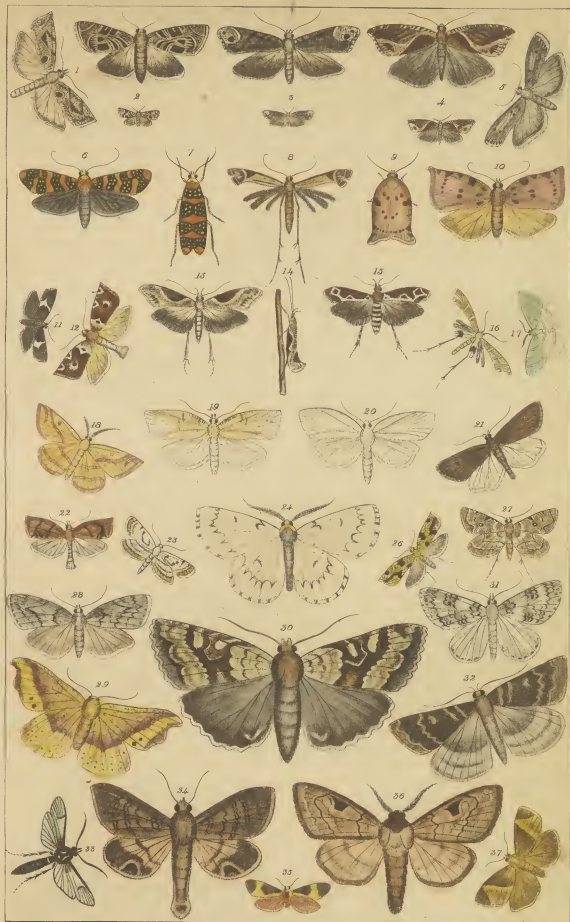
9
 10
 11
 12
 13
 14
 15
 16
 17
 18
 19
 20
 21
 22
 23
 24
 25
 26
 27
 28
 29
 30
 31
 32
 33
 34
 35
 36
 37
 38
 39
 40
 41
 42
 43
 44
 45
 46
 47
 48
 49
 50
 51
 52
 53
 54
 55
 56
 57
 58
 59
 60
 61
 62
 63
 64
 65
 66
 67
 68
 69
 70
 71
 72
 73
 74
 75
 76
 77
 78
 79
 80
 81
 82
 83
 84
 85
 86
 87
 88
 89
 90
 91
 92
 93
 94
 95
 96
 97
 98
 99
 100

1
 2
 3
 4
 5
 6
 7
 8
 9
 10
 11
 12
 13
 14
 15
 16
 17
 18
 19
 20
 21
 22
 23
 24
 25
 26
 27
 28
 29
 30
 31
 32
 33
 34
 35
 36
 37
 38
 39
 40
 41
 42
 43
 44
 45
 46
 47
 48
 49
 50
 51
 52
 53
 54
 55
 56
 57
 58
 59
 60
 61
 62
 63
 64
 65
 66
 67
 68
 69
 70
 71
 72
 73
 74
 75
 76
 77
 78
 79
 80
 81
 82
 83
 84
 85
 86
 87
 88
 89
 90
 91
 92
 93
 94
 95
 96
 97
 98
 99
 100



1.	<i>S. unnamed</i> ♀	from collection, M. Saunders	Mass	p. 184 '85
2.	<i>S. Somnera</i> (Steph.) Saund. & (Walsb.) Guen. M. S.	do	do	p. 162 '85
3.	<i>Pentstemon</i> (Sp.) <i>altissimus</i> (Riley) <u>Grape</u>	do	do	p. 160 '85
4.	<i>S. (Anisopleura)</i> (Steph.) <i>fragrans</i> (Riley) <u>Strawberry</u>	Mo do	do	p. 160 '85
5.	<i>S. Pempelia</i> (Hüb.) <i>rossulariae</i> (Pack.) <u>Soosberry</u> & <u>Currant</u>	M. do	do	p. 150 '85
6.	<i>Ala. (s.) complexa</i> (Clem.) <i>paratoplera</i> (<u>Chilanthus</u>)	Mo do	do	p. 57 '85
7.	do do do do	do	do	do
8.	<i>S. Pterophorus</i> (Graf.) <i>curvidactylus</i> .	<u>Walnut</u>	do	p. 161 '85
9.	<i>S. Tortrix</i> (Linn.) <i>rylegana</i> (Grote)	<u>Walnut</u>	do	p. 161 '85
10.	do do do do	do	do	p. 161 '85
11.	<i>unnamed</i> ♀	from M. Saunders	Canada	p. 162 '85
12.	do do ♀	do do do	do	p. 162 '85
13.	<i>S. cheni</i> (Zeller) <i>unnamed</i>	(Riley) Missouri	do	p. 157 '85
14.	do do do <i>gallaeoides</i> (Riley)	do (Golden rod)	do	p. 157 '85
15.	do do do do	do do	do	p. 157 '85
16.	<i>S. Pterophorus</i> (Graf.) <i>curvidactylus</i> (Fitch) <u>Grape</u>	do	do	p. 161 '85
17.	<i>Apateles</i> (Guen.) <i>rufivora</i> (Riley) Mo	<u>Waspberry</u>	do	p. 158 '85
18.	<i>Camatorus</i> (Guen.) <i>gracilis</i> (Fue)	<u>Chickweed</u>	do	p. 152 '85
19.	<i>Cenopsis</i> (Zuer) <i>pellitana</i> (Robinson)	Coll of M. Saunders	Canada	p. 138 '85
20.	do do do do do do do do	do do do do do do	do do do do	p. 138 '85
21.	<i>unnamed</i> ♀	do do do do	do do do do	p. 138 '85
22.	<i>S. Tortrix</i> (Linn.) <i>brunneatana</i> (Robinson)	do do	do do	p. 132 '85
23.	<i>Olistogoma</i> (Guen.) <i>albivittis</i> (Cob)	do do	do do	p. 117, 115, 116 '85
24.	<i>Catorax</i> (Gr.) <i>catenaria</i> (Gr.) ? <u>basaloid</u> ♀	do do	do do	p. 131 '85
25.	Sept. out.			
26.	<i>Trioxys</i> in <i>Sulphurea</i> (Clem.)	Saunders	Canada	p. 138 '85
27.	<i>Hydrocampa</i> (Guen.) <i>emma</i> (G. Harvey)	do do	do do	p. 136 '85
28.	<i>Heliantha</i> (L.) <i>curvipes</i> (L.)	do do	do do	p. 170 '85 118 '85
29.	<i>Dryocampa</i> (L.) <i>postica</i> (L.)	(Walsb.) (L.)	do	p. 85 '85
30.	<i>Hadana</i> (Sch.) <i>emilia</i> (Bois)	(Pavon 704)	Memphis, Tenn.	p. 101 '85
31.	<i>unnamed</i> ♀	Saunders	Canada	p. 164 '85
32.	<i>Pseudoglossa</i> (Grote) <i>luteocincta</i> (Feyer)	do	do	p. 23 '85
33.	<i>Altagia</i> (Zell) <i>fulvipes</i> (G. & R.)	do	do	p. 53 '85
34.	<i>Dryops</i> (Guen.) <i>fulvipes</i> ♂ (Linn.)	do	do	p. 163 '85
35.	<i>Desmetia</i> (Walk.) <i>unipuncta</i> (L.)	do	do	p. 67 '85
36.	<i>Choristoneura</i> (L.) <i>peruviana</i> (L.)	do	do	p. 162 '85
37.	<i>Leucocodes</i> (Linn.) <i>reclutans</i> (G. & R.)	do	do	p. 60 '85

v
 2. *unnamed* (Pterophorus) ♀ when 97/8
 v
 1. *unnamed* (Ala.) — of whom 97/6
 v
 1. *unnamed* (Catorax) — 97/24.

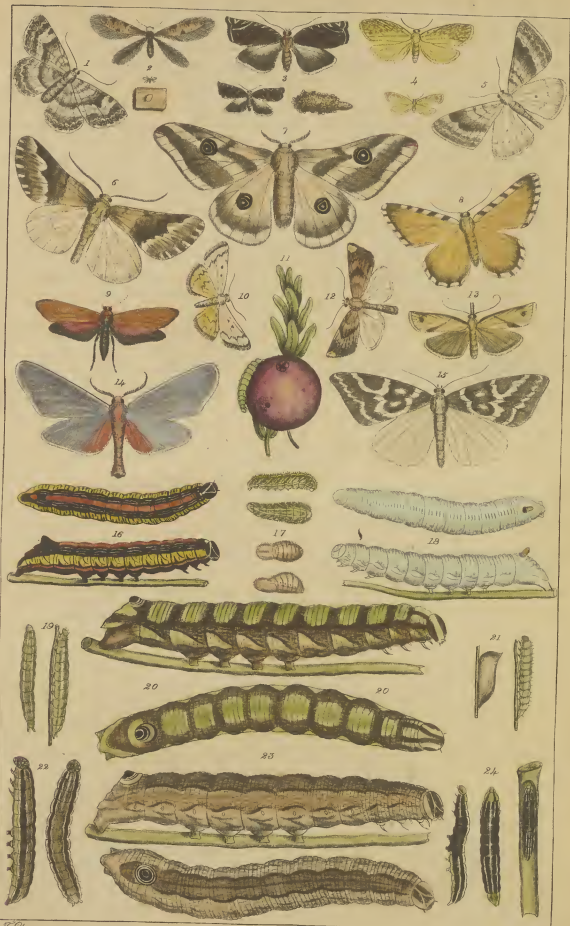


A. Stevens

- 1 ♀, unnamed Collection of C. R. Dodge Connecticut p. 185 39
- 2 ♀, do cocoon on Apple tree bark. p. 185 39.
- 3 ♀, Eptiphophora (Duf.) caryana (Fitch) in Kercobryrul. envelope. Ma. Aug. p. 185 39.
- 4 ♀, *Stictix* (Swain) oxycozana Pack. larva on a vine in orange grove Cranberry by Lt. Goodale N. Jersey p. 185 39.
- 5 ♀ unnamed ? (Arizona Dr. Palmer) p. 185 39.
- 6 ♀ do do p. 185 39.
- 7 ♀ Saturnia (Sch.) gabona (Clem) (from Arthur Scott no larva del norte Texas) p. 88 39.
- 8 ♀ *Mameopteryx* (Pack) tessellata (Pack) (from Arizona, Dr. Palmer. p. 185 39.
- 9 ♀, *Anatolemis* (Pack) grisei (Pack) (Dr. Palmer Arizona. p. 54 39.
- 10 ♀ unnamed ? (do do) p. 186 39.
- 11 ♀ unnamed ? on fruit Cranberry 15 Aug. Dr. Goodale v. Sitkaville Kurum, ton. U.S. p. 172 39.
- 12 ♀, unnamed ? from Thos R. Dodge Conn. p. 185 39.
- 13 ♀ *Syrich* (Swain) pilana (Moesch) New Hampshire p. 185 39.
- 14 ♀ unnamed ? from Dr. Palmer Arizona (Yucca) p. 185 39.
- 15 ♀ *Toryodes* (Swain) trilinearia (Pack) (Dr. Palmer Arizona) p. 185 39.
- 16 ♀ *Cecilia* (Ck.) consociifera (G. M.) on Soldado Aug. N.H. CRD p. 33, 106 39.
- 17 ♀ *Spaena* (Ck.) Saundersii (Swain) ? (in willow June 10 Canada p. 42 39.
- 18 ♀ (young) *Thyrus* (Swain) abbotti (Swain) on Grape C. M. p. 42 39.
- 19 ♀ unnamed ? Canada on willow p. 172 39.
- 20 ♀ (old) *Thyrus* (Swain) abbotti ♀ on Grape July. C. M. p. 42 39.
- 21 ♀ unnamed ? Canada on willow p. 172 39.
- 22 ♀ *Lucania* (Ck.) extranea (Pack) (unipuncta) Kans. p. 98 39.
- 23 ♀ *Thyrus* (Swain) abbotti (Swain) ♂ (var) 20 C. July. p. 42 39.
- 24 ♀ (young) *Gortyna* (Ck.) nitela (Aly) (found in stalk of wheat) p. 99 39.

Cecilia consociifera
+
Stictix oxycozana
red insect on Pa. etc
+
Thyrus extranea

19 18 39
2 18 39
3 18 39
4 18 39



at
ab

J. Flower

1962
1962

Plate XCIX (99)

- 1. *A. Lacalla* (Och) *convexipennis* ♂ (G&R) p. 105 Pl.
- 2. *A. Hemileuca* (Walk) *grosi* (Koff) p. 85 Pl.
- 3. *A. cecropia* (Cov) *morula* ♀ (G&R) p. 98 Pl.
- 4. *A. Mamestra* (Cov) *distincta* ♂ (G&R) p. 105 Pl.
- 5. unnamed? *Palma* Colorado new p. 105 Pl.
- 6. *A. Antae* (Walk) *punctistriga* (Walk) (Md) p. 92 Pl.
- 7. *A. Mamestra* (Cov) *subjecta* ♂ (G&R) Headma Cov p. 105 Pl.
- 8. *A. Archibolina* (Gr) *incandescens* (Gr) (St Palmer Colorado) p. 185 Pl.
- 9. *A. pseudoharis* (G&R) *cyllantherina* ♂ (Bois) p. 88 Pl.
- 10. *A. Archibolina* (Gr) *deducta* (Mor) (St Palmer Colorado) p. 105 Pl.
- 11. unnamed? (Cov) bud worm of Iowa p. 172 Pl.
- 12. *A. Thyreus* (Swain) *abbotti* (Swain) (from a sketch by M. S. Entom) p. 172 Pl.
- 13. *A. Lapara* (Walk) *bombycoides* (Walk) Elberta (Harr) harrisi (Clem) p. 82 Pl.
- 14. *A. Platycurva* Pack *purcula* (Pack) ♀ (on *pinus* *trabus*) p. 84 Pl.
- 15. *A. Parris* (Sch) *oleacea* (Bdw) (in N Hampshire CR Doage) p. 7. Pl.
- 16. *A. unnamed?* Sphinx on Poplar New York. Central p. 53 Pl.
- 17. unnamed on Oak p. 172 Pl.
- 18. unnamed on Oak p. 172 Pl.
- 19. *A. Cressona* (G&R) *juglandis* (Sw) maculipes (Sw) p. 45 Pl.
- 20. *A. Lacalla* (Och) *intermedia* (S. Feyer) p. 106 Pl.

Exhibitor: Emersonal
Museum



S. Flower.

Plate C. (100)

- 1 ♀ *Anchylopera* (Steph) *vacciniana* (Pack guide) p. 140 55.
 2 ♀ *Sitocollis* (Zell) *curvicaucata* (Pack d) p. 146 55.
 3 ♀ do do *hidycansella* (Pack do) p. 146 55.
 4 ♀ *Aglossa* (Zell) *cuprealis* (Pack do) p. 123 55.
 5 ♀ *Leptosticta* (How) *roborella* (Pack do) p. 144 55.
 6 ♀ *Lyonetia* (Hub) *saccatella* (Pack?) p. 145 55.
 7 ♀ *Lophonia* (Hub) *colonnella* (Sinn Curtis) 354 p. 150 55.
 8 ♀ *Lithosia* (Zell) *casta* (Sinn) Pack guide p. 60 55.
 9 ♀ do do *geminatella* do do p. 146 55.
 10 ♀ *Agrochis* (Coch) *scandens* (Riley) 1st rep. p. 103 55.
 11 ♀ *Alysius* (Hub) *ochromaculata* (Hub) p. 56 55.
 12 ♂ P. *Tinea* (Sinn) *granella* (from *Curtis medicat*) p. 148 55.
 13 ♀ *Catocala* (Sinn) *catenaria* (Guen) *Levea* ♀, *Bassabis* Pack fig p. 132 55.
 14 ♂ *Megopteryx* (Guen) *unnamed* (Pack fig) p. 85 55.
 15 ♀ *Xanthoptera* (Guen) *semivivacea* (Guen) do do p. 110 55.
 16 ♀ *Pterophorus* (Guen) *periscelidactylus* (Sinn) (do do) p. 160 55.
 17 ♀ *Stamatopis* (Hub) *grataria* (Fall) (riley) p. 133 55.
 18 ♀ *Pteris* (Sch) *rara* (Sinn) (Europe sketch ^{Edw} 75) p. 7 55.
 19 ♀ *Lagoa* (Harr) *crispata* (Guen) (Pack fig) p. 73 55.
 20 ♀ *Acronycta* (Coch) *acris* var *umbricosa* (Pack fig) p. 97 55.
 21 ♀ *Gamalecampa* (Guen) *filamentaria* (Guen) (Pack fig) p. 135 55.
 22 ♀ *Catocala* (Coch) *ultronia* (Hub) (do) p. 116 55.
 23 ♀ *Cotioptera* (Zell) *unnamed* (do) p. 178 55.
 24 ♀ *Argyrota* (Guen) *crocataria* (Guen) (do) p. 126 55.
 25 ♀ *Figured erroneously by n Packera as a miltava unnamea*
 { See Packard page 238
 26 ♀ *Lemnitis* (Coch) *desipus* (Sennars Sketch) p. 23 55, Edw 31

Figures not reliable as to color, as the coloration was made from printed descriptions of Fr Packard's notes

1 *Geminatella* of whom (*Lithosia*) p. 100/2
 1 *roborella* of whom (*Lepidoptera*) p. 100/5



Schöner

Plate Cl. 101

- 1 S.P.J. *Tinea* (Linn) *sarcitella* (Gaverna) nestle from Curtis, '99 p. 149. '99
- 2 S.P.J. *Incurvum* (Haw) *acrifoliella* (Fitch) (Frax ¹) p. 150 '99
- 3 S.P.J. *Xylophus* (Linn) *pomotellus* (Fitch) Chaetochilus Stp 1/148 '99.
- 4 S. *Aphomia* (Hüb) *colomilla* ♂ (Linn) from Curtis. — p. 150 '99
see C/7, bottom figure
- 5 S. *Tinea* (Linn) *helionella* (Linn) (from Berge) — p. 148. '99
- 6 S. do do *crucella* (493 Harr) (from Berge) — p. 148 '99.
- 7 S. ~~*Pachia* (W. W. W.) *glycerum* (Linn) (Hüb)~~
- 7 L. *Pachia* (W. W. W.) *anona* (Scud) *glycerum* (Edw) p. 27. Edw 33. '99
- 8 L. *Cidaria* (Treat) *diversimaculata* (Hüb) fm Pack guide p. 135 '99.
- 9 S. *Asiocampa* (Curtis) *americana* ♀ (Harr) — p. 93 '99.
- 10 S. *Xystus* (Gr) *robiniac* ♀ (P. P. K.) Xyletus (Hüb) — p. 93. '99.
- 11 S. do do do ♂ do do do — p. 93 '99.
- 12 S. *Parorygia* (Pack) *achalina* ♀ (Sw a p. 77) — p. 57. '99.
- 13 S. do do do do ♂ (do) — p. 57. '99.
- 14 Pap do do do (do) — p. 57. '99.
- 15 S. do do do do (do) — p. 57. '99.
- 16 S. *Agrota* (Fab) *pyri* (Harr 335) — p. 55. '99.
- 17 S. *Leucophaea* (Linn) *argenteimaculata* (G. R.) *Sthenopsis* (Pack) p. 96 '99.
fm Packard.
- 18 L. in all C/13 } *Calocera* (Gr) *catenaria* (Lore) Basalis Gr Harr p. 151 w '99.
Zenone Bois
- 19 Egg cluster of *Asiocampa* (Curtis) *americana* (Harr. (see p. 9)) p. 92. '99.

} Figures taken from woodcuts on the plates mentioned
 } as none of the figures mentioned could be procured



F. Flourens

Plate CII (102)

- 1 *Sycomonpha* (Harr) *minata* (Pack) fm Dr Smart South Calif p 58 75
- 2 *Syneda* (Swm) *divergens*. (Bekr) from Dr Smart, So Calif p. 113 75
- 3 *Syptina* (Swm) *ophthalma* (Swm) Rev. Cyrus Thomas, Ill. — p 95 75
- 4 *Hemecophila* (Steph) *petrosa* (Walk) fm Dr Smart So Calif — p 62 75
- 5 *S* do do do do do — p 62 75
- 6 *Agrotis* (Coh) *unnamed* ? do do — p 103 75
- 7 *Aplodes* (Swm) *unnamed* ? do do — p 135 75
- 8 *Haemorrhagia* (B&R) *unnamed* ? *Sesia* (Fab) do do new p 41 75
- 9 *Gastrophysa* (Coh) *unnamed* ? do do — p 93 75
- 10 *S* *unnamed* ? do do —
- 11 *Espantheria* (Hes) *reducta* (Gr) do do — p 64 75
- 12 *S* *unnamed* ? do do new p 185 75
- 13 *Palyzamia* (Grote) *gloueri* (Strecker) — p 56 75
- 14 *Tortrix* (Linn) *paucidana* (Rob) Rev^o Cyrus Thomas, Ill p 134 75
- 15 *Calocala* (Schr) *ultronia* (Hub) Dr Schott, LC. — p 116 75
- 16 *S* *unnamed* ? Rev^o Cyrus Thomas, Ill — p 185 75
- 17 *Locha* (Pack) *hylaenus* (Lomovj) var fm Dr Schott LC. — p 52 75
- Sphinx* ^{juv} *pruni* (SvA p 32)

delus p 2

x

ill



Plate CIII (103)

- 1 ♀ *Euglyptia* (Hub) *hieroglyphica* (Roctus) (exam) L^o Palmer low Calif
 p 118 ♂♀.
- 2 ♀ *Halisidola* (Hub) *caryae* (Clem) (aff) L^o Palmer Lower California } p 69 ♂♀.
 3 ♀ *Algieria* (Fab) unnamed ♀ New do. do. do. Mexico } p 58 ♂♀.
- 4 ♀ *Gonophaea* (Walk) *vermiculata* (GFR) Callalaca L^o Smart low Cal. } p 57 ♂♀.
- 5 ♀ unnamed ♀ fm L^o Palmer Arizona & Mex low } p 150 ♂♀.
- 6 ♀ do do do do (common) } p 186 ♂♀.
- 7 ♀ *Gloria* (Pack) *arizonensis* (Pack) (Palmer Arizona or Mex. } p 88 ♂♀.
 (= this C. Pandora. Plate ?)
- 8 ♀ *Hemileuca* (Walk) unnamed (taken June by L^o Palmer Ariz & Mex. } p 88 ♂♀.
- 9 ♀ unnamed ♀ New do do do } p 186 ♂♀.
- 10 ♀ unnamed ♀ (resembles *Druya* pl XIV. p. ciliated antennae ?
 L^o Palmer Arizona or Mex. } p 186 ♂♀.
- 11 ♀ unnamed New do do do do } p 186 ♂♀.
- 12 ♀ *Heliothis* (Och) *lutescens* (L.) do do do } p 106 ♂♀.
- 13 ♀ *Catocala* (Sch) *arizonae* (Gr) do do do } p 113 ♂♀.
- 14 ♀ unnamed ♀ New do do do do } p 186 ♂♀.
- 15 ♀ unnamed ♀ do do do do } p 186 ♂♀.

All on this plate from borders of New Mexico or Arizona, except no 4

Euglyptia hieroglyphica f. *variosa* (Clem) L^o Palmer 103.1

variosa
lutescens
arizonae
vermiculata



F. Leu

CIV (104)

1	unnamed ?	on Sycamore Md July	p. 186 50
2	<i>Lobesia</i> (Curtis)	on <i>Fraxinus</i> (Curtis) <u>Bombard</u> (Curtis) <u>lucida</u> (Pilsb.)	p. 180 50
3	<i>Acrotis</i> (Curtis)	on <i>Fraxinus</i> (Curtis) <u>lucida</u> (Pilsb.)	p. 188 50
4	unnamed ?	on <i>Salix poplar</i>	p. 186 50
5	unnamed ?	Oak minor	p. 186 50
6	<i>Heterocampa</i>	<i>lineolata</i> (Harvey) <u>Tennessee</u>	p. 85 50
7	<i>Hypocropha</i>	<i>monilis</i> (Fab) <u>for Smart</u> So Calif	p. 118 50
8	<i>Hypocropha</i>	(Karr) <u>Palmeri</u> (Pack) do do Utah	p. 84 50
9	unnamed ?	<u>for Smart</u> So Cal	p. 100 50
10	unnamed ?	on <i>Curtis Knoxville</i> <u>Tenn</u> <u>MW</u>	p. 100 50
11	<i>Catocala</i> (Sch)	<i>lineella</i> (Gn) do do	p. 115 50
12	unnamed ?	(US) (see p. 186)	p. 116 50
13	unnamed ?	(<u>from M Curtis Knoxville Tenn</u>)	p. 100 50
14	<i>Catyma</i> (Cock)	<i>nitida</i> (Guér) (<u>from Ohio</u>) <u>for Cur</u>	p. 94 50
15	<i>Anthidia</i> (Kear)	<i>teratophora</i> (Hb) (US)	p. 155 50
16	<i>Attacus</i> (Linn)	<i>pernyi</i> (Guér) <i>Anthracis</i> <u>pernyi</u> Guér <u>Menville</u> rev. et mag de Zool 1858 297 p. 6 1) (Pack guide 2 p.) as taken on Oak by M Akhurst Brooklyn	p. 88 50
17	unnamed ?		
18	unnamed ?	from <u>for Smart</u> South California	p. 186 50
19	unnamed ?	(<u>from US</u>)	p. 180 50
20	<i>Pelochia</i> (Linn)	<i>occidens</i> Riley <u>ms</u> on <i>Judas tree</i> (N. Hodar) Md July	p. 186 50 p. 185

Pelochia *occidens*

4
x

Heterocampa *lineolata*

Hypocropha *monilis*

Catyma *nitida*

Anthidia *teratophora*



F. Steyer

- 1 ♂ *Phryganidea* (Pack) *californica* (Pack) (in Mr Slocker k. 75 75
 in Boston Nat. hist. Soc.
- 2 ♀ *Parorgyca* (Pack) *harrisi* (Pack) (Harr coll. in Boston Soc. Nat. Hist.) (47)
 75
~~*Phryganidea* (Pack) *harrisi* (Pack)~~
- 3 ♀ *Synsaccula* (Harr) *spomaco* (Emery, *Trans. Ent. Soc. Lond.* No 522) in Harr Coll.
 13 S R. Hist. p. 41 59
- 4 ♀ *Cyclosa* (West) *aurivitta* (G&H) (Texas) in Boston Nat. Hist. Soc. p. 57 54
- 5 ♀ *Kalisidota* (Hull) *edwardsii* (Pack) (Calif.) do do do do p. 70 76
- 6 ♀ *Cyclosa* (West) *imitata* (Stricker) (Texas) do do do do p. 57 74
- 7 ♀ *Perigonia* (Bois) *lucra* (Fab) do do do do p. 42 74
- 8 ♀ *Calosymbicus* (Gr) *astylus* (West) (Harr) *Smoranthus* (Lat) p. 47 74
 (in Bost. Soc. Nat. Hist.)
- 9 ♀ *Phlopus* (Cram) (Hull) *titus* (Hull) (see Bost. Soc. Nat. Hist.) p. 42 74
 10 " " *titus* (Hull)
- 10 ♀ *Eupyrroglossum* ? *cecalus* ? p. 42 74
 { specimen in cabinet of Boston Soc. Nat. Hist. & labelled as from California
 { *Euprosopernis* (G&H) *phaelon* (G&H) is ment^d as *macroGLOSSA* of Bois
- 11 ♀ *Oelophus* (Hull) *titus* (Cram) (Hull) Bost. Soc. Nat. Hist. fig. 11 p. 62 74
macroGLOSSA *annulosum* (Swain) & *M. balteata* (Hull),
 (no. 333)
- 12 ♀ *Sphinx* ? *unnamed* sp. from (Harr) Coll. in Bost. Nat. Hist. Soc. p. 47 74
- 13 ♀ *Eumecurus* (Gr) *aristii* (Hull Gr) *Smoranthus* (Lat) p. 47 74
 ? Harr coll. Nat. Hist. Soc. coll.
- 14 ♀ *Scherura* (Lamb) *cauliculus* No. 44. in Harr Cabinet. Coll. of Bost.
 Soc. Nat. Hist. (in Mr Sanborn)
 see fig. 105. fig. 12 (75)

Basellara of whom & what. (*Parorgyca*) 105/2
~~*Phryganidea* (Pack) *californica* (Pack)~~
Eupyrroglossum ? *cecalus* ? of whom & 105/10
caecus ? *Eupyrroglossum* ? of whom 105/10
Euprosopernis ? *phaelon* ? of whom & 105/10
~~*Basellara* (Pack) *californica* (Pack)~~ 105/10



J. B. S. 1850

2188
1870
1122

Plate CVI. 106.

- 1 ♀ *Cisrocampa* (Curtis) *californica* ♂ (Packg) Bos Soc Nat Hist 1849
- 2 ♀ do do do ♀ do do do do do do 1849
- 3 ♀ *Tucosoma* (Gr) *chiridota* ♀ (Gr) *graty pteryx* of Harv coll no 27 p 79A
- 4 ♀ *Inguva* (Gard) *oculatrix* (Guen) (no 162) Boston Soc Nat Hist. p. 187 58.
- 5 ♀ unnamed ♀ from California do do do do do do p. 187 58.
- 6 ♀ unnamed ♀ (labelled, *aneresens*?) Packg mss) Boston Soc. Nat Hist 1860. p. 187 58. X
- 7 ♀ *Crocota* (Hub) *quinaria* (Gr) do do do do do do 187 58.
- 8 ♀ *Prothymia* (Hub) *rosalba* (Gr) Pack mss) do do do do do do 187 58.
- 9 ♀ unnamed ♀ Tortrix do do do do do do 187 58.
- 10 ♀ *Prothymia* (Hub) *cocane fasciata* (Gr) Harv coll) do do do do do do 187 58.
- 11 ♀ unnamed ♀ from Prof Parker Grinnell Iowa. New do do do do do do 187 58. X
- 12 ♀ *Botis* (Lal. Jr) *octomaculata* (Linn) *Ennychia glomerata* (Walk) do do do do do do 187 58.
- 13 ♀ *Simacodes* (Lal) unnamed ♀ do do do do do do 187 58.
- 14 ♀ *Mamestra* (Ch) *adjuncta* (Guen) Collection of M. Sanborn Mass. p. 101 58.
- 15 ♀ unnamed ♀ do do do do do do 187 58.
- 16 ♀ unnamed ♀ do do do do do do 187 58.
- 17 ♀ do ♀ do do do do do do 187 58.
- 18 ♀ *Peprumia* (Linn) *quadricaria* (Lus) *Unomonia* Sandborn. p. 118 58.
- 19 ♀ *Noctua* (Linn) *cupida* Gr. do do do do do do 187 58.
- 20 ♀ *Xanthia* (Sch) *tegata* ? (Esper) (Gr) do do do do do do 187 58.
- 21 ♀ *Agrotis* (Ch) *prosvia* (Sb) do do do do do do 187 58.
- 22 ♀ *Mamestra* (Ch) *umbrosa* (Guen) do do do do do do 187 58.
- 23 ♀ *Eny* & *E. Excus* (Hus) *immaritima* (Hub) (on Sycamore July 1870) do do do do do do 187 58.
- 24 ♀ unnamed ♀ (on Sycamore Md) do do do do do do 187 58. X
- 25 ♀ unnamed ♀ *gratula* (Hub) found on Elm 20 Aug. p. 20. Edw 28 58. X
- 26 ♀ *Lagoa* (Harv) *opercularis* (Sv) p. 53) on Plum. Virginia p. 72 58.
- 27 ♀ unnamed ♀ found on Maybanc CR Lodge Aug 26 do do do do do do 187 58. X
- 28 ♀ *P. P. P. P.* (Sch) *otocacca* (Bux) on No Edwards do do do do do do 187 58.
- 29 ♀ *P. P. P. P.* (Kirby) unnamed ♀ do do do do do do p. 20 Edw 28 58.
- 30 ♀ *P. P. P. P.* (Sch) *rapae* (Linn) do do do do do do p. 7. Edw 13 58.

Unomonia
Simacodes
Ennychia
Unomonia
Unomonia
Unomonia



J. Flower.

Plate CVII. (107)

1. *I. Apalala* (Hub) *superans* (Guen) Sprague Boston p 97. 75.
2. *I. Holodonta* (Cob) *stragula* (G) Sanborn do p 81. 75
3. *I. Gontyna* (Cob) *causala* (Fr) do do p 99 75
4. *I. Therona* (Hub) *verridaria* (Hul) do do p 187 75.
5. *I. unnamed* ? Larva taken June 10. Jas. July 2. Sprague Boston p 187. 75.
6. *I. Rhodophora* (Guen) *florida* (Guen) Alaxia (West), Saunders, Can. p 106 75.
7. *I. Gaslopaaha* (Cob) *american* (Carr) Sanborn Mass. p 42 75.
8. *I. Parorgyia* (Pack), unnamed Aug 8. do do p 77 75.
9. *I. unnamed* ? from Fore island beach on Golden rod Sep. p 187. 75.
10. *I. Leucania* (Cob) unnamed ? July 13. p 98 75.
11. *I. Callomorpha* (Lat) (aff) *clymenis* (Esp) (Mr. Huleg brodd Texas) p 62. 75.
12. *I. Calocala* (Soh) *abbreviata* (Gr) 29th J Curtis Knoxville Tenn p 116 75.
13. *I. Tortrix* (Linn) unnamed ? p 138 75.
14. *I. Lygranthaeca* (G&R) *salurata* (G) ? coll of Mr Sanborn Mas p 105 75.
15. *I. unnamed* ? do do do do p 187. 75.
16. *I. Allucus* (Linn) *hernexi* (Guen) Anthracae ^{see CVI/6} ♂ (Akhurst. Brook yn) p 88 75.
17. *I. unnamed* ? (bica Md Sep) p 187 75.
18. *I. unnamed* ? (in Currant Saunders. Canada) p 187. 75.

*Diagrams of the
larvae*

*Fig. 1. Larva taken
on Golden rod
Sep.*

*Fig. 2. Larva taken
on Golden rod
Sep.*

*Fig. 3. Larva taken
on Golden rod
Sep.*

*Fig. 4. Larva taken
on Golden rod
Sep.*

*Fig. 5. Larva taken
on Golden rod
Sep.*

*Fig. 6. Larva taken
on Golden rod
Sep.*

*Fig. 7. Larva taken
on Golden rod
Sep.*

*Fig. 8. Larva taken
on Golden rod
Sep.*

*Fig. 9. Larva taken
on Golden rod
Sep.*

*Fig. 10. Larva taken
on Golden rod
Sep.*

*Fig. 11. Larva taken
on Golden rod
Sep.*

*Fig. 12. Larva taken
on Golden rod
Sep.*

*Fig. 13. Larva taken
on Golden rod
Sep.*

*Fig. 14. Larva taken
on Golden rod
Sep.*

*Fig. 15. Larva taken
on Golden rod
Sep.*

*Fig. 16. Larva taken
on Golden rod
Sep.*

*Fig. 17. Larva taken
on Golden rod
Sep.*

*Fig. 18. Larva taken
on Golden rod
Sep.*

Limacodes (Lat)



J. Storer

Plate VIII (108)

1. ♀. unnamed? Larva see 20/34 on oak Md. p. 188 54.
- 2 ♀♀ unnamed? L. on *Aralia nudiflora* Md. p. 188 54.
- 3 SP. *Unarsia* (Zell) *pruinella* (Clem) Larva on terminal twigs of peach. Md. p. 162 54.
- 4 ♀♀. unnamed? Larva in terminal shoots of Hickory Md. p. 188 54.
- 5 ♀ *Telechia* (Zeller) *gallae solidaginis* (var) Riley Missouri p. 157 54.
- 6 ♀ *Olivii* (Hal) *chalcidionia* (Hal) Wilmington Pa. p. 185 54.
- 7 ♀ *Limonestis* (Fr) *disparis* (God) from log of M. Riley 3^d rep. 154. p. 23 54.
- 8 ♀♀ *penathina* (Fr) *julesca* (Riley) hat site on oak 2/30 p. 110 54.
- 9 ♀ *Cedarici* (Fr) *diversilobata* (Hal) ^{Md.} p. 135 54.
- 9X ♀ *Homohadena* (Fr) *badistigma* (Fr) ^{Md.} p. 105 54.
- 10 ♀♀ *Achaitodes* (Guen) *zeae* (Harr 189) on stalk of Elder L.G. p. 49 54.
- 11 ♀♀. *Plusia* (Och) *brassicae* (Riley 2 Rep. 110. p. 110 54.
- 12 ♀♀. *Apatela* (Hal) *apusciana* (Guen) ^{acronycta} (Clem) *populi* Riley 2 Rep. 119. p. 97 54.
- 13 ♀ *Amplyperia* (Och) *pyramidoides* (Guen) Riley 3 Rep. 72 p. 11 54.
- 14 ♀♀ *Eupithecia* ^{h. bicarnea}
- 14 ♀♀ *Eupithecia* (Pack) *rhoearia* (Fitch) *Atraxas* *ellopica* ^{Am Ent 2/14} p. 139 54.
- 15 ♀♀. *Laphrogma* (Guen) *frugiperda* (S&A) ^{Prodenia} (Guen) *autumnalis* Riley 3 Rep. 113. p. 100 54.
- 16 ♀ *Callimorpha* (Lat) *fulvicosta* (Clem) Riley Rep. 3/133 p. 62 54.
- 17 ♀♀. *Xylina* (Och) *cinerea* Riley 3^d rep. 134. p. 106 54.
- 18 ♀ *Pycnomorpha* (Harr) *epimenis* (Harr) (Riley 3 Rep. 63) p. 57 54.
- 19 ♀♀ *Mutilla* (Fr) *chalcidon* (Doubl) p. 17. Eduw 24 54.
- 20 ♀. *Tortrix* (Linn) unnamed? U.S. p. 188 54.
- 21 ♀♀ *Xyleutes* (Hal) *robiniae* (Harr) Am Ent 2/127 p. 93 54.
- 22 ♀♀ *Grapholitha* ^{Xyl.} *scutellana* (Hr Acad Canada) p. 128 54.
- 23 ♀♀. *papilio* (L) *philonor* (S&A p. 2.) ^{Penthina} (Fr) *Carpocapsa* (Zinn) ^{Ph. 1.} Eduw. 9. 54.

(*livia* 4th night sheet (Chalcedonia) 108/6
~~*Grapholitha* *scutellana* of *scutellana* *scutellana*~~ 108/52
scutellana of whom *Grapholitha* (Linn) see Pack 1867.70) 105/2

32
Museum of the University of Cambridge



H. H. H. H.

Plate CIX (109)

- 1 ♂ *Catocala* (Schr) *arizonae* (Gib) (N.C. 10^o Schott. p. 116 58.
 2 ♂ do do *arizonae* (Gib) *arizonae* & *new Mex.* L. Palmer p. 116 78
 3 ♂ *Antiraea* (Kul) *Sama mai* (Thoreville) *Attacus* (Kul) G. p. 86 58.
 4 ♂ *Lyperota* (Sch) *abalcionalis* (Walk) Carpenter Helligs Island - p. 122 6.
 5 ♂ unnamed? from L. Palmer Utah p. 118 58.
 6 ♂ unnamed? from Texas p. 118 58.
 7 ♀ unnamed? Calif. Md. Cal. p. 118 58.
 8 ♀ ~~XXXXXXXXXX~~ (Linn) unnamed on Calif. Md. Cal. p. 173 58.
 9 ♀ unnamed? caterpillar on *Scarus geranium* injures flowers buds - p. 73 58.
 10 ♂ *Cucubia* (Cob) *ultracincta* Guen. (Linton authority) on Ragweed Md. Oct. p. 267 58.
 11 ♀ *Trixia* ? Linn *malivora* (De Baron) apple leaf folder p. 135 58.
 12 ♀ unnamed? on Rose buds. Md. June p. 118 58.
 13 ♂ *Pamphila* (Fr) *ethlius* (Cram) *elythus* (Bois) *Gonoloba* (Bois) p. 35. Edu 58.
 C.K. Lodge on *Canna indica* insect in S. Carolina



Tongue, and
Eggs

Plate CX. 110

1 ♂ *Attacus* (Linn) *atlas* (Linn) *Saturnia* (Sch w) ~~~~~ p. 55 Jw
habitat India China &c.



J. Flower

Attacus atlas ^{Linnaeus} *Linnaeus* *Linnaeus*
(*Saturnia*)

Plak. CXI. III.

1. *S. Attacus* (Linn) *laetitia* (Suwra Menardi?) *Deckerbia* p. 64 79
 (habitat Senegal. G.M.)
2. *S. Agria* (Wb) *tau* (Linn) European. p. 88 79
3. *S. poridomena* (Walk) *virginia* (Sahl) *Attacus* (Sch) Europe p. 88 79
Salurnia Sch from Bergestigere.
4. *S. Salurnia* (Sch) *spini* (Schr) (*B. pavonia media* L) Europe (Berge) p. 88 79
5. *S. do do carpinii* (Schr) (*B. pavonia minor* L) Europe (Berge) p. 88 79
6. *S. do do do do do do* { Europe (Berge) p. 88 79
calophaea



Plate CXXI. 112

1. Saturnia (S-h) robusta (Blanch) polytrixana (Walk) p. 5055
2. I. Atacus (Sinn) unnamed? rubescens? Valdivia, (Phil. Sm. inst) p. 86 75.
? 3. I. Saturnia (Sch) - pyra Berg (B Pavonia major (Sinn) Europe p. 88 55.

1. From Professor Baird Smithsonian Institute 6 75.



Plate CXIII. 113

1. L. Anthracina (Hub) paphia (Hub) Phalaena (Linn) attacus (Linn) p 56 57
(Cress) a. Mytila (Drury)
Jussch. moth (of Hindostan) Bughy, Burbhoon hills c. c. 8
see Catalogue East India house 7/58.



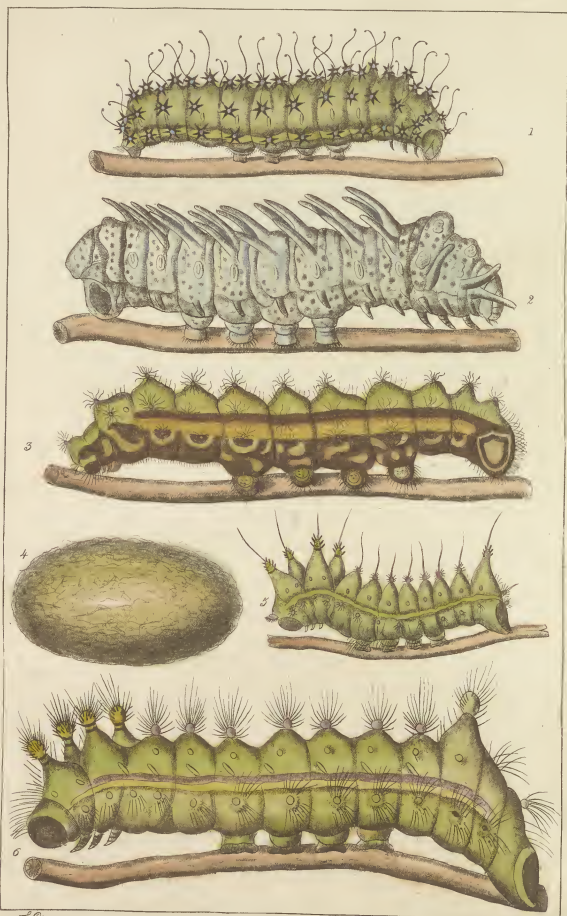
F. Leveque

Antheraea (Hüb.) *paphia*. Cels.
Phalaena. *Alleaus paphia* Linn.
Attacus mytilus Guenée.

Natseh (Hondos). Bughy (Purboon hills). Hotsura (Makralles) Honkwa. Magellan.
 Catalogue East India House. 2. 354.

Plate CXIV. 114.

1. ♀ *Saturnia* (Sch) *paronia* major (Linn) (from *Triglypon* *des* world 257.) p. 88 75.
2. ♀ *Alluaea* (Linn) *allas* (Linn) *Saturnia* (Sch) in India etc. p. 88. 72
3. ♀ *Antheraea* (Hüb) *assama* (Koefer) *Saturnia* (Sch) in India p. 86 74
see Cat. Mus. Brit. Mus. Hist. Nat. London 1811
4. ♀ *Antheraea* (Hüb) *yama* mai (Gueron Menerville) p. 86 74
see Cat. East India house 2/398. Am Ent. 2/34
5. (♂) Young Larva of *Actias* (Seach) *selene* (MacLay) *Trophaea* Hüb. p. 88 74
hab. India. Cat. Lepidop. East India house 2/400 p. 14/3.
6. ♀ adult r do do do do do p. 85 72



T. Savary

Plate CXV. 115

1	<i>Filonea</i> (Fert.) <i>lanini</i> Minot	Collection of M. Linton				p. 135 78
2	<i>Beszia</i> (Fab) <i>uniformis</i> (G&K)	do	do	do		p. 131 78
3	<i>Filonea</i> (Fert.) <i>bicoloraria</i> (Minot)	do	do	do		p. 133 78
4	<i>Clorica</i> (Curtis) <i>pulcherrima</i> (Minot)	do	do	do		p. 130 78
5	<i>Depressaria</i> (Hew.) <i>ontariella</i> (Belburn)	do	do	do		p. 144 78
		<i>hexacana</i> (S&J)				
6	<i>Tortricella</i> (Pack) <i>bifidalis</i> (Grote)	do	do	do		p. 79 78
7	<i>Herminia</i> (Fab) <i>meridialis</i> (Guen)	do	do	do		p. 123 78
8	<i>Panographa</i> (Hub) <i>decoralis</i> (Hub)	do	do	do		p. 122 78
		<i>hyponal'ca</i> <i>elegantalis</i> (Fitch)				
9	<i>Schoerdes</i> (Guen) <i>transversata</i> (Bruny)	do	do	do		p. 127 78
10	<i>Orobancha</i> <i>stramentalis</i> (Hub)	do	do	do		p. 126 78
11	<i>Hadena</i> (Och) <i>decolorator</i> (Brauer)	do	do	do		p. 106 78
12	<i>Lagoa</i> (Larr) <i>crispata</i> (Pack)	do	do	do		p. 72 78
13	<i>Mamestra</i> (Ck) <i>habitans</i> (Walk)	do	do	do		p. 101 78
14	<i>Hypona</i> (Schr) <i>sestralis</i> (Fab. Guen)	do	do	do		p. 122 78
15	<i>Catecata</i> (Schr) <i>parta</i> (Guen)	do	do	do		p. 116 78
16	<i>Hypona</i> (Schr) <i>evanidalis</i> (Rob)	do	do	do		p. 122 78
17	<i>Elopiina</i> (Fert) <i>juvillana</i> (Guen)	do	do	do		p. 129 78
18	<i>Phelosamia</i> (Gr) <i>vicini</i> (Bow)	<i>Samia</i> (Hub) Sp. fm Thores	Thores	Manville		p. 86 78
19	<i>Cucubia</i> (Ck) <i>intermedia</i> (Speyer)	do	do	do		p. 166 78

All on plate except *Phelosamia* from the collection of Mr J. A. Linton of Albany N. York N. mostly mentioned in Entomological Contributions in 23rd annual report of the N. Y. S. Ent. Nat. Hist. for 1869.

115 10. *Orobancha* of whom (*stramentalis*)
~~45 76~~ *evanidalis* of whom (*Hypona*)



G. S. Severo

2 v 18
3/19

Plat. CXXVI 116.

- 1. *S. crastenia* (Houb) carulea (Gr) ----- p 117. 48.
- 2. *S. Tarache* (Houb) *terminimaculata* (Gr) ♂ ----- p 119. 50.
- 3. *Xylomyges* (Swz) *aurialis* (Gr) ----- p 100. 33.
- 4. *Agrothacia* (Hb) *thoreau* ♀ (Gr. Grate Bull Buffard) Nat hist Soc 1/13
p 108. 50.
- 5. *Stenanthacia* (Hb) *Lucigrammet* (Gr)
- 6. *Agrotis* (Swz) *farinosa* (Gr) B.B. Soc Nat hist. S. 1/98 ----- p 102. 45.
- 7. *Hadena* (Ck) *aurantior* (Gr) do do do do 1/109 ----- p 108. 45.
- 8. *Herlothia* (Ck) *californicum* (Gr) ----- p 108. 45.
- 9. *S. Tarache* (Houb) *flavipennis* (Gr) ----- p 119. 49.
- 10. *Ufeus* (exst) *purpurata* (Gr) var (B.B. Soc Nat hist 1/102) ----- p 119. 49.
- 11. *Agrotis* (Ck) *atropensis* (Gr) do do do do 1/97 ----- p 102. 35.
- 12. *Xanthoptera* (Swz) *rosalba* (Gr) (Desc. N. Am Noct 1/298) ----- p 110. 35.
- 13. *Agrotis* (Ck) *senatilis* ♂ (Gr) B.B. Soc Nat Hist Soc 1/100 ----- p 103. 4.
- 14. *Agrotis* (Ck) *unnama* ♀ ----- p 97. 35.
- 15. *Agrotis* (Ck) *auricularis* (Gr) B.B. Soc Nat Hist Soc 1/46 ----- p 101. 35.
- 16. *Tomia* (Ck) *orena* (Swz) (See page on lar) ----- p 120. 35.
- 17. *Agrotis* (Ck) *mimallonis* (mole) B.B. Soc Nat hist Soc 1/98 ----- p 102. 35.
- 18. *Parva* (Gr) *auripennis* (Gr) do do do 1/126 ----- p 118. 35.
- 19. *Ommatobola* (Gr) *linteris* (Gr) do do do 1/126 ----- p 119. 35.
- 20. *Pholometra* (Gr) *serotacernis* ♂ (Gr) (Swz N. Am Noct 3/359) ----- p 119. 29.
- 21. *Spilometra* (Gr) *lunifera* (Gr) B.B. Soc Nat hist Soc 1/127 ----- p 124. 35.
- 22. *Ansilonche* (Lod) *evanida* ♂ (Gr) do do do 1/112 ----- p 124. 35.

8 resembles fig 117/3 of Swz. fig in Bull. Buffard Soc Nat hist. Houlton



J. Flower

Plate CXVII. 117.

1. *C. bicinctus* (Sinn.) pulchellus (Var) ^N Haydens Exp. p. 94 59
~~2. *C. bicinctus* (Sinn.) *var. pulchellus* (Hayden) P. S. P. 11/117. p. 157 59~~
~~3. *IPJ Bellis* (Sinn.) *var. communis* (Sinn.) P. S. P. 11/117. p. 151. 59. 151. 59.
var. communis (Sinn.) P. S. P. 11/117. p. 151. 59. 151. 59.~~

~~3. *S. unnamed* ♀ Larva feeds on currant p. 186 59.~~
~~4. *S. leucophaea* (Wasm.) *var. glandulifera* (Riley) 4th Rep 155 (Lar. feeds on currant) p. 158 59~~
~~5. *S. tortrix* (Sinn.) *var. candelabra* (Riley) 4th rep. 66 (Lar. webs on Apple foliage) p. 135 59.~~

~~6. *S. Lygranthecia* (G&R) *marginata* (Haw) *Anthracis* Bois p. 103
 Sns. Common Autumn 9th 1875 p. 100~~
~~7. *IPJ Bucculatrix* (*Lidax*) *hemigona* (Riley) 4th rep. 49. Lar. feeds on Currant p. 166 59~~
~~8. *S. unnamed* ♀ (From M. Klier's Mayport Florida) p. 155 59~~
~~9. *S. Lygranthecia* (G&R) *parkardi* (Dr.) from Haydens expedition p. 105 59~~
~~10. *H. acrobasis* (Zeller) *juglandis* LaBaron *Physcia* Riley 4th rep. 42
 Walnut p. 126 59.~~

~~11. *H. Barzama* (Wasm.) *vulnificata* (G.)
 3. Lar. feeds in Slab of *Pentstemon virginica* June 20 p. 188 59
 Sns August (Arrow root)~~
~~12. *S. Eucellia* (Hbst) *virginialis* (Bois) (See also p. 76/2) p. 62 59~~
~~13. *S. Pempylia* (Hus) *hammondi* Riley 4th rep. 44 *Stenonitica* (Hbst) p. 126 59
 upper foliage~~
~~14. *S. unnamed* ♀ Larva on Strawberry & whorlberry p. 168 59
 June July. Sns. Sep~~
~~15. *S. unnamed* ♀ on Solidago June 15. Ma p. 189 59~~
~~16. *S. unnamed* ♀ on Wild cherry May Ma p. 189 59~~
~~17. *Sp. Papia* (L) *phisoron* (L) p. 3. Edu. p. 92 59~~
~~18. *ISC prunella* (Riley) *zuccasella* (Riley) 5th rep 150 118 59
 (Sns. found in seed vessels of Yucca)~~
~~19. *Coc. S. unnamed* ♀ Caterpillar found in large, hollow round balls on plants of *Cornus sericea* (L.) *var. sericea* 119 59
 Fern. Sns p. 189. 59. (on end leaves) 73~~

fulcrum of whom *H. Barzama*, 117/1
~~*var. communis* (Sinn.)~~ 117/11
 communis of whom (*var. communis*) 117/13



J. H. Storer

24

h 178

unfurnished & names not right

- 1 *Notia leucascles* ?
- 2
- 3
- 4 *Lithophara helalia* ?
- 5
- 6
- 7
- 8
- 9 *Tenalia peltuaria*
- 10 *Polypticia atricornis*
- 11 *Lithophara picealis*
- 12 *Tenalia jocosa*
- 13 *Stimia nigeron*
- 14 *Lithophara signata*
- 15 *Scladrium granosum*
- 17 *Suctopora denticata*
- 18
- 19.
- 20 calcipular on chondrichy. in Sep.
21. *Antiblemma canalis*.
23. *Catocala vesodua* ?
- 24 *Ugratia phlogopitrona*

CXVIII



Plate A.

- 1 L. Papilio (L.) turnus (L.) (Say) Pan. Ryd. 187. Edwards 11. 1885
- 2 L. do de glaucus ♀ (L.) BHL 22 Rhyssalus Turnus Edw 11 1885
- 3 L. do de marcus (L.) as Rhyssalus 1. Edw. 9. 1885.
- 4 L. do de palamedes (Gorys) as Rhyssalus of BHL 3. Edw 11 1885
- 5 L. P. Teneas (Swain) delia (BHL) see Xanthidia delia = BHL 19, Edw 18 1885
- 6 L. P. Teneas (Sch) monuste (BHL) see Chlorones BHL 16 Edw 12. 1885-7.
- 7 L. P. Teneas (Swain) delia (Cram BHL) see Xanthidia delia of BHL 19, Edw 18 1885
- 8 L. P. Teneas (Swain) nicippe (Cram) BHL see Xanthidia nicippe BHL 20 Edw 19. 1885.
- 9 L. P. Conas (F) caesia (Stoll) BHL p 22 Edwards 15. 1885.
- 10 L. P. Phryxan (Gott) alis (Cram) see Phryxan (F) in merica of BHL 16 Edw 25 1885.
- 11 L. P. Taminelis (F) unisaria of SVA 19/x in Papilio Edw 31. 1885.
- 12 L. P. do do do (of BHL p 53 as taminelis) Edw 31 1885.
- 13 L. P. Lycæna (Fab) composita (Gott) see Argus composita of BHL 136 Edw 48 1885.
- 14 L. P. Lycæna (Fab) pseudargiolus (SVA) see Argus hendersonii BHL 36 Edw 48. 1885.
- 15 L. P. Lycæna (Fab) composita (Gott)
- 16 L. P. dancus (Lat) benice (Cram) see BHL p 34 Edw 19. 1885.
- 17 L. P. do do do do see SVA Papilio gelyppus B, VII, Edw 14. 1885.
- 18 L. P. Apalura (F) cellis (BHL p 56.) Edw. 32. 1885.
- 19 L. P. Apalura (F) clyton (BHL p 57) Edw 32. 1885.
- 20 L. P. Thecla (F) m. album (BHL 25) see Thecla psyche also BHL 27. Edw 30 1885
- 21 L. P. Thecla (F) psyche (BHL 27) see also T. m. album BHL 25. Edw 30 1885
- 22 L. P. Thecla (F) motya (BHL p 64. Edwards 63. 1885)
- 23 L. P. Thecla (F) portlandia (F) see Saturus portlandia of BHL 58. Edw 35 1885
- 24 L. P. Salyrus (Vrse) alopus (F) BHL p 29 Edw. 33 1885
- 25 L. P. Neonympha (West) uncoratus (F) see Saturus uncoratus BHL 63. Edw 33. 1885.
- 26 L. P. Neonympha (West) uncoratus (F) see Saturus uncoratus BHL 63. Edw 33. 1885.
- 27 L. P. Neonympha (West) uncoratus (F) see Saturus uncoratus BHL 63. Edw 33. 1885.
- 28 L. P. Neonympha (West) uncoratus (F) see Saturus uncoratus BHL 63. Edw 33. 1885.
- 29 L. P. Neonympha (West) uncoratus (F) see Saturus uncoratus BHL 63. Edw 33. 1885.
- 30 L. P. Neonympha (West) uncoratus (F) see Saturus uncoratus BHL 63. Edw 33. 1885.
- 31 L. P. Neonympha (West) uncoratus (F) see Saturus uncoratus BHL 63. Edw 33. 1885.
- 32 L. P. Neonympha (West) uncoratus (F) see Saturus uncoratus BHL 63. Edw 33. 1885.
- 33 L. P. Neonympha (West) uncoratus (F) see Saturus uncoratus BHL 63. Edw 33. 1885.
- 34 L. P. Neonympha (West) uncoratus (F) see Saturus uncoratus BHL 63. Edw 33. 1885.
- 35 L. P. Neonympha (West) uncoratus (F) see Saturus uncoratus BHL 63. Edw 33. 1885.
- 36 L. P. Neonympha (West) uncoratus (F) see Saturus uncoratus BHL 63. Edw 33. 1885.
- 37 L. P. Neonympha (West) uncoratus (F) see Saturus uncoratus BHL 63. Edw 33. 1885.
- 38 L. P. Neonympha (West) uncoratus (F) see Saturus uncoratus BHL 63. Edw 33. 1885.
- 39 L. P. Neonympha (West) uncoratus (F) see Saturus uncoratus BHL 63. Edw 33. 1885.
- 40 L. P. Neonympha (West) uncoratus (F) see Saturus uncoratus BHL 63. Edw 33. 1885.

(Copied from Boisduval's Icones, or Smith and Albot, merely for reference, & comparison, as both these works are out of print and exceedingly scarce 1885)

CU.



Pl. 13.

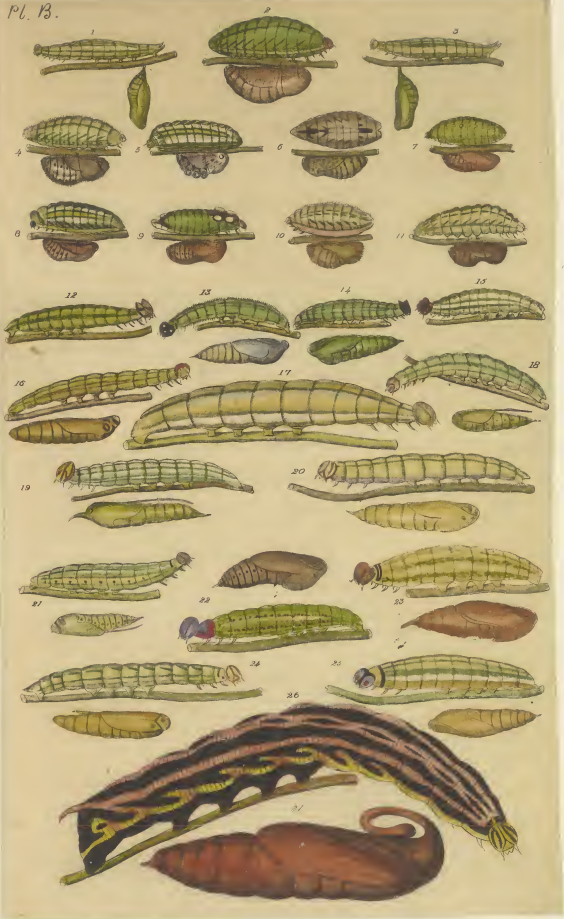


Plate C.

1. L.P. *Melospilus* *lucanans* (Linn) *Choreocampa* (as sp.) *Sphinx* (Linn.)
Smith & Abbott Tab XXXIII. p. 46. 58.
2. L.P. *Alysiid* (Hub) *octomaculata* (Hub) *Sph.* Tab XLV. ~~~~~ p. 47. 58
3. S.P. *Pronuptivus* (Hub) *gaurai* (S&A) *S&A* Tab XXXI ~~~~~ p. 49. 58
Pterogon (Hub) *juvencula* (Stecher)
4. J.F. *Enyo* (Hub) *legabois* (Pack) *S&A* Tab XXX. ~~~~~ p. 52. 58
5. L.P. *Sphinx* (Linn) *kalmiae* (S&A) *S&A* Tab XXXVII ~~~~~ p. 57. 58
6. J.P. *Hezmaria* (Dalm) *diffinis* (Harr) *Sesua* (S&A) *Sphinx* (Linn) ~~~~~ p. 41. 58
fusiformis (S&A) XLIII (S&A)
7. L.P. *Elema* (Clem) *compararum* (S&A) *S&A* Tab XLII. *Sphinx* (Linn) ~~~~~ p. 52. 58.
8. S.P. *Duflo* (Hub) *velis* (Linn) *S&A* Tab XL) *Phaeonictus* (Harr) ~~~~~ p. 46. 58.
9. L.P. *Thygethanis* (Harr) *ruficornis* (S&A) *Microdia* (Pack) *Linn.* (Linn)
acuta (Hub) *Sphinx* (Harr) *antli.* *S&A* Tab XXXIV ~~~~~ p. 49. 58

The larvae of: on these plates were copied from Smith & Abbott as the work was exceedingly rare and out of print many of these insects are not figured in other works

P.6.C.



Plate D

- noveboracensis* *Luc*
1. *L. Adelta* (Soh) chocantula, SVA fig 195 Tab. XCVIII Phalaena *SVA chocantula* } p. 118. 58.
 2. *L. Homoptera* (Bois) calycanthale, Bull. pag 207 Tab. CIV. p. calycanthale p. 111. 58.
 3. *L. Catecala* (Soh) cessens, SVA fig 177 Tab. LXXXIX. cessens p. 111. 58.
 4. *L. Taphrogyna* (Guen) frugiperda SVA fig 179 Tab. XCVI. frugiperda P. 100. 58.
 5. *L. Alana* (West) gaura SVA fig 197 Tab. XCIX. Rhodophora Guen. p. 106. 58.
 6. *L. Catecala* (Soh) amasa SVA fig 179 Tab. XCVI. amasa p. 113. 58.
 7. *L. Catecala* (Soh) medea SVA fig 181. Tab. XCI. medea p. 116. 58.
 8. *L. Lophodonta* (Pack) angulosa Pack SVA fig 105. p. LXXXIII, notodonta } p. 114. 58.
 9. *L. Catecala* (Soh) negama SVA fig 175 Tab. LXXXVIII. negama p. 116. 58.
 10. *L. Xylomyges* (Guen) phylotarsa SVA fig 193. Tab. CVII. phylotarsa } p. 100. 58.
 11. *L. Chloridea* (Wes) rhaxia SVA fig 199. Tab. C. rhaxia p. 107. 58.
 12. *L. Corana* (Soh) furcula SVA fig 181. Tab. LXXXI. furcula p. 84. 58.
 13. *L. do do do* do do do do do do p. 84. 58.
 14. *L. Homoptera* (Seph) unitaria (H. Sph) Phalaena unitaria SVA p. 130. 58.
 15. *L. Amphitalys* (Sph) unitaria (H. Sph) Phalaena unitaria SVA fig 201. Tab. CI.
 16. *L. Epimacia* (Kub) horaria (Soh) Phalaena leucodansaria SVA fig 203. Tab. CII. } Bronhia ca Luc p. 130. 58.
 17. *L. Sorpe* (Kub) virida (Kub) Phalaena virida SVA fig 103. Tab. LII. } Eustrocha Soh p. 92. 58.
 18. *L. Gualbata* (Soh) americana (arr) Phalaena viridifolia SVA fig 101. Tab. LI. } p. 92. 58.
 19. *L. Parorgyia* (Pack) leucophaea (SVA) orgyia Phalaena } SVA Tab. LXXVIII. 185. 58. 70.
 20. *L. Arctia* (Soh) placentalis (Halk) SVA fig 129. Tab. LXXV. placentalis p. 50. 58.
 21. *L. Hyphantria* (Harr) cunea (L. rug) SVA fig. P. purclausema fig 138. Tab. LXX. } Spilosoma Stem 58. p. 65. 58.
 22. *L. Sciraptes* (Pack) esche. SVA esche SVA fig 135. Tab. LXXVIII. } Arctia Soh p. 66. 58.

All figures on this plate Copied from Smith & Abbell as they are the best of the present and very scarce

PL. D

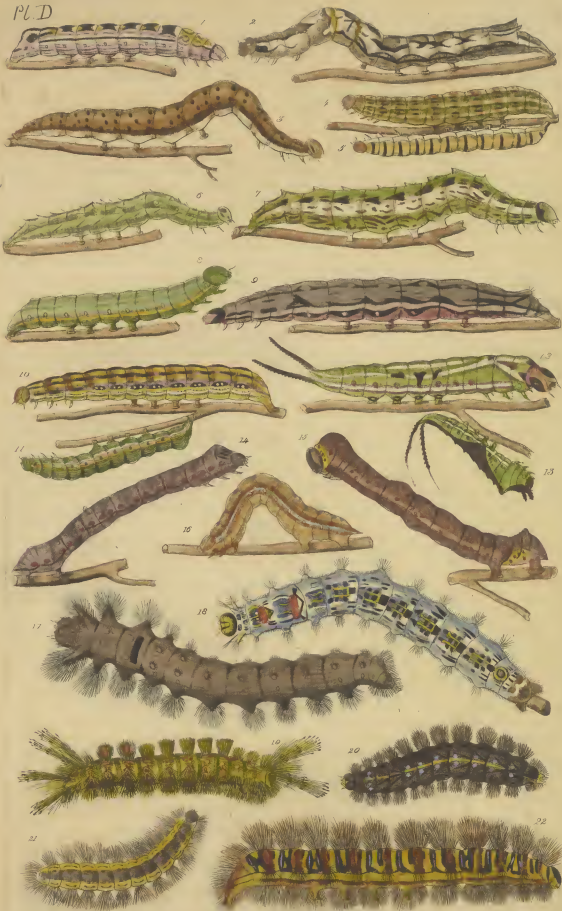


Plate II.

- ✓ 1 *J. Neomyiophya* (West) *uncolatus* (S&A) fig 25 Tab. XIII S&A. Eduw 33 p 26 ♂♂
- ✓ 2 *J. Thecla* (Fr) *javanicus* (S&A) ♂ fig 27, Tab XIV S&A. Eduw 39 p 24 X ♂♂
- 3 *J. do do do ♀ do do do do do*
- ✓ 4 *J. Lycæna* (Fr) *argiolus* S&A ♀ fig 29, sub XV S&A. see *Pseudargiolus* of B&W. Eduw 47 p 32 ♀♀
- ✓ 5 *do do do ♂ do do do do do*
- ✓ 6 *J. Pamphila* (Fr) *otho* S&A fig 31 Tab XVI S&A. Edwards 52 p 38 ♂♂
- ✓ 7 *do do do do do do do do do*
- ✓ 8 *J. Pamphila* (Fr) *arcus* S&A fig 40, Tab XXIII S&A ♀. Eduw 53 p 37 ♂♂
- ✓ 9 *J. Pamphila* (Fr) *reticulatus* (S&A) fig 33 Tab XVII S&A. Eduw 54 p 40 ♂♂
- ✓ 10 *J. Pamphila* (Fr) *arcus* S&A fig 45 Tab XXIII S&A ♂. Eduw 53 p 37 ♂♂
- ✓ 11 *J. Pamphila* *Tellus* (S&A) fig 33 Tab XVII S&A. Eduw 54 p 40 ♂♂
- ✓ 12 *J. Xanthochla* *jacunda* (B&W) ♂ see *Terius jacunda* Eduw 18 p 11 ♂♂
- ✓ 13 *J. Xanthochla* *delio* B&W ♂ see *Terius delio* Eduw 18 p 11 ♂♂
- ✓ 14 *J. Xanthochla* *delio* B&W ♀ do do do do do
- ✓ 15 *J. Thecla* (Fr) *fulvæ* B&W see *Thecla Calanus* (H&B) B&W p 29. Eduw 39 p 29 X ♀♀
- ✓ 16 *J. Thecla* (Fr) *aparcus* S&A see *Thecla strigosa* of H&B
- ✓ 17 *J. do do do do do do do do do*
- ✓ 18 *J. Thecla* (Fr) *lycaropus* (S&A) see *Thecla strigosa* of H&B Eduw 39 p 31 ♂♂
- ✓ 19 *J. do do do do do do do do do*
- ✓ 20 *J. do do do* *ansæ* var Bois 32 see also *T. iris* of Bois do do
- ✓ 21 *J. do do do* *moyses* (H&B) see *T. titus* (Fr) B&W *Propæ* p 34 Eduw 42 p 30 ♂♂ ♀
- ✓ 22 *J. do do do do do do do do do*

Figures from Smith & Abbott or B&W's accounts for comparison &c

Xanthochla E/13.16 of whom.

Pl. II



Plate IV

1. ♀ *Ischa* (*Is*) *poas*. (Hüb., ♀ (1842) 35.) *Edw* 41. 76 30.
- 2 ♀ do do do do ♂ do do do do
3. ♀ *Lycæna* (*Is*) (see *Argus pseudoptera* 15. 15. 35.)
Edw 45. 76 31.
4. ♀ *Chrysophanus* (*Is*) *epixanthus* (Btl.) see *Chrysophanus epixanthus* 1,
 Btl. 38. *Edw* 45. 76 32.
- 5 ♀ *Lycæna* (*Is*) *pseudargyrea* (R. & S. 36 see also *Argyria* 34a 29, xv
reclusa dem. var. ♀, *Edw*. *Ischa* 4, 1842 *Edw* 47, 76 32
6. ♀ do do do do do do do do
7. ♀ *Lycæna* (*Is*) *conspicua* (Godt) 137 L as *Argus* p. 36. *Edw* 48. 76 31.
- 8 ♀ *Pamphila* (*Is*) br. lat. (1842 as *Heperia* p. 15) *palatka* *Edw* 48. 76 32.
 76 33
9. ♀ *Fenisea* (942) *larquinus* (*Is*) see *Prionomallus pratagi* Btl. 37.
Chrysorhanus (Loub.) *Edw* 52. 76 32.
- 10 ♀ *Lycæna* (*Is*) *pseudargyria* Btl. 36 see also *argyria* 34a 29, xv
 suis la *philæus* ♀ *poas* *Edw* 47. 76 32
- 11 ♀ *Melipotis* (*Is*) *similia* (Hew.) (see Btl. p. 46.) *Phycodes* (Loub.)
hypocis (Loub.) *Edw* 28. 76 33.
- 12 ♀ *Neonympha* (*Is*) *arcolatus* (1842) as *Satyrus* Btl. 63. *Edw* 33
 76 36.
- 13 ♀ *Eunamus* (*Is*) *caesus* (Btl. p. 73) *Heperia* ♀ *goneloba*
Edw 58. 76 35
- 14 ♀ *Pamphila* (*Is*) *insulenta* (Hüb.) as *poas* 1. ♀ *Palatka* *Edw* 53. 76 30
 76 31.
- 15 ♀ *Pamphila* (*Is*) *arpha* (Btl. as *Heperia* 68) ♂ *Edw* 54. 76 37.
- 16 ♀ do do do do do do do do
- 17 ♀ do do *Zabulon* (1842 p. 76. as *Heperia*) see also *goneloba* in note
 by Edwards p. 53. *Edw* 50. 76 40
- 18 ♀ *Pamphila* (*Is*) *brotus* (Btl. as *Heperia* 75) ♂ *Edw* 52. 76 38.
- 19 ♀ do do do do do do do do
- 20 ♀ *Pamphila* (*Is*) *cernes* Btl. p. 76 *Heperia* see also *Zabulon* in note
 page 17. *Edw* 50. 76 40.
- 21 ♀ *Pamphila* (*Is*) *otho* 34a/31, XVI as *Papilio* see also *Heperia* *Otho* Btl.
 77. *Edw* 52. 76 38
- 22 ♀ do do do do do do do do
- 23 ♀ *Pamphila* (*Is*) *cernes*. * Btl. p. 76. see *Argos*. Bd 43. ♂
 see also *Zabulon* in note *Edw* 53. 76 40
- 24 ♀ do do do do do do do do
- 25 ♀ *Pamphila* (*Is*) *Ethlius* (Cram.) see *Eulamus* *lynthus* Btl. 75
goneloba *Edw* 54. 76 35.
- 26 ♀ *Pamphila* (*Is*) *phylæus* (Druy) *Heperia* *phylæus* Btl. 78
ethlius (*Is*) *Edw* 52. 76 40.

All the figures on this plate are copied from *Parideval* & *Lecointe*
Lycidoptera et chenille mostly for the sake of comparison
 as this work is out of print & very rare.



Plate G

1. ♀ Pamphila (F), furon ♂ Edwards 52 Hesperia (Lat) 38 39.
 2 ♀ do do do ♀ do do do do do do
 3 ♀ do do maculata ♀ Eduw 54 (Coll of GPK) Hesperia (Lat) 38 37 -
 4 ♀ do do delaware Eduw o Hesperia Lat - Eduw 54 38 38
 5 ♀ Phyciodes (Wob) carlota (Reak) Melitaea (F) Eduw 26 75 17
 6 ♀ Pamphila (F) delaware ♀ Eduw 54 is logan Eduw Hesperia Eduw 54 38 38
 7 ♀ do do fusca (GPK) Eduw 55 38 39.
 8 ♀ Phyciodes (Wob) harrisii (Soud) Melitaea ♀ (fm M Saunders) Eduw 55 38 17.
 9 ♀ Amblyscirtus (Speyer) annand o Melitaea or Phyciodes ♀ (f) Eduw 55
 10 ♀ Lycama (Fab) lucia (Kirby) (Harr 27) Eduw 47. J.S. 31.
 11 ♀ Colias (F) bielo dice ♀ Gottl see B74 21. light variety Eduw 16. 28 16.
 12 ♀ Thecla (F) stojosa (Harr) see also Thecla (Soud ne Harr) Eduw 39 38 29X
 13 ♀ Papilio (L) asterias (F) variety calverleyi (Grate) Eduw 10 28 1
 14 ♀ Pamphila (F) beckius (Heib) Hesperia (Lat) wamsutteri Harr 31. Eduw 53 38 10
 15 ♀ Pamphila (F) zabulon (Btl see also Hesperia (Lat) cernes B74 176.
zabulon. B74 764. cernes. B74 576. Eduw p. 574 53. 28 40.

G



Plate 13 Group

Plate H

1. *J. Pyrgus* (West) *lesellata* (Soud) Cilus Bul celus West 66 36 36
2. *J. Pamphila* (F.) *myrtis* (Edwards ♂ 52.) 38 39.
3. *J. de* *de* *de* ♀ *de* *de*
4. *J. de* *de* *uncas* Edw 51. 38 40.
5. *J. Thanaos* (Bt) *juvenalis* (F.) SWA 41/XX 1 B&L 65 Edw 57. 38 36.
nisiomades (see Weid)
6. *J. Neomorphel* (West) *gemma* (B&L 62 as *Salixrus*) Edw 33. 38 26.
7. *J. Hieris* (Sch.) *prolificae* (B&L 17) var *vernalis* Edw Edw 13 33.
8. *J. Mellaea* (F.) *thalcedor* (Loub.) Edw. 24 38 1
9. *J. argyrus* (F.) *boisducati* (Somm in B&L) Edw 33. 38 15
10. *J. (opaeodes* (Speyer) *procris* (Edw) *leucura* (Sat) uaco var Edw 49 38.
11. *J. Salixrus* (West) *pegala* (F.) Edw 35. 38 27.
12. *J. Salixrus* (West) *nephela* (Kirb.) Edw 35 27.
13. *J. Thanaos* (West) *borealis* (G&K) *nymphalidea* (Fab) Edw 35 28 28
14. *J. Mellaea* (Fab) *phaon* Edw 26.) 38 17.
15. *J. Thecia* (F.) *acallia* Edw 60. 38 28.
16. *J. Lycaena* (Fab) *pembina* Edw. 45 38 32.
17. *J. Thecia* (F.) *caeta* Edw 42. 38 29 X
18. *J. Thecia* (F.) *ivus* (Godt) *henrici* (S&K) Edw 41 38. 29 X

H



Plate I

- 1 *S. Pyrgus* (West) *centaurea* (Kumb) *Hesperia ruralis* (Edw)
76. *nyancta* (Edw) Edw 56. 38. 31.
- 2 *S. Pamphila* (F) *fontana* (Edw) ♀ *Hesperia conspiciua* Edw 52. 34. 40
- 3 *S. do do mandan.* unnamed by Edwards, ♀ 55. 40
- 4 *S. Thecla* (F) *calanus* (Hub) ♂. *falax* 138L 29. Edw 39. 35. 29x.
- 5 *S. Cotias* (F) *philodice* (God) 737L 21. Edw 16. 33. 11. (diff. colored variety)
- 6 *S. Thecla* (F) *calanus* (Hub) ♂. *falax* 138L 29. Edw 39. 35. 29x.
- 7 *S. Thecla* (F) *poetas* (Hub) 139L 25. Edw 41. 39. 30. (from Texas)
- 8 *S. Trias* (Swain) *mexicana* (Bos n 3) Edw 18. 33. 1. (from Texas)
- 9 *S. Lycopha* (F) *scudleri* (Edw 47) 38. 52.
- 10 *S. Pamphila* (F) *napa* (Edw n 18) *lacotah* (Edw) Edw 51. 35. 40.
- 11 *S. Amblyscirtus* (Keyer) *samoset* (Scad) *memoria* (Edw) ♀ *speria memoria* (Edw)
Edw 41. 38. 20.
- 12 *S. Pyrgus* (West) *nicara* ♂ Edw 56. 35. 36.
- 13 *S. Pamphila* (F) *napa* (Edw n 19) *lacotah* (Edw) Edw 51. 35. 40
- 14 *S. Pterostichus* *rapae* (Linn) ♂ ♀ from European work Edw 44. 38;
- 15 *S. Pamphila* (♂) *calanus* (Bos) as *carus*. 76 *Hesperia holomela* (Edw)
Edw 50. 33. 36.
- 16 *S. do do maculata* (Edw ♀) *Hesperia* Edw 52. 35. 40.
- 17 *S. do do viator* ♂ (Edw) 54, 38. 40
- 18 *S. Limenitis* (F) *proserpina* ♂ said to be a var. of *L. unsula* Stoll; X
on y. Edw. note 31. 38. 23.



Plate K.

1. *Colias* (♂) *betula* (Edw. 18. 1891)
2. *Chionobas* (Bois pulla (Hub) *calceol* (Hub) Edw 37 1892.
3. *Sheela* (♂) *stygosa* (Harr) *leparops* (Seud) Edw 39 1893.
4. *Chionobas* (Bois) *semidea* (Say) *cono* (Ba) Edw 37 1892.
5. *Argynnis* (♂) *aphrodite* (♂, ♂) Edw 20 1891.
6. *Chionobas* (Bois) *borax* (Esp. *bootes* (Hub) Edw 37. 1892.
7. *Amblyscirtes* (Speyer) *cos* (Edw 35 1890 Texas 0 90)
8. *Argynnis* (♀) *aphrodite* (♀) Edw. 20 1891.
9. *Lycæna* (♀) *Lygdamus* (Doub) Edw 16 1891
10. *Amblyscirtes* (Speyer) *minor* (♂) Edw) *hesperia*? Edw 35 1890
11. *Argynnis* (♀) *calceol* (♀) Edw 20 1891.
12. *Ampiphila* (♂) *peckius* (Kirby) *wamsutta* (Harr) Edw 33 1890

K



Plate I

- 1 ♀ *Colias (F.) alexandra* ♂ Edu 17 1910
2 ♀ do do do ♀ do do
3 ♂ *Apatura (F.) maia* ♂ Edu 25 1925
4 ♀ *Colias (F.) behrii* ♀ Edu 18 1910
5 ♀ *Argynnis (F.) callippe* (Bris ♂) Edu 21 1916
6 ♀ do do *hesperis* (Edu ♂ 22) 1916
7 ♀ do do *atlantis* (Edu ♀ 21) 1915
8 ♀ do do *no-komis* (Edu 19) 1916

All on plate copied by permission from Mr. Edwards
Bulletin of North America



Plate M

1. *I. Colias* (F) *christina* ♂ Eduw 16. 59. 10
2. " " " " ♀ " "
3. *I. Colias* (F) *chippewa* ♀ de Kodora Eduw 17. 59. 11.
4. *I. Argynnis* (F) *halcyon* Eduw 21. 59. 16.
5. *I. Anthracaris* (Bd) *sara* (Bd) Eduw 14. 59. 5.
6. *I. Colias* (F) *chippewa* ♂ Eduw. 17. Kodora Eduw 17. 59. 11
7. *I. Argynnis* (F) *monticola* (Bchr ♀) Eduw 22. 59. 10
8. *I. Colias* (F) *chrysomelas* (Eduw Canor) Eduw 16. 59. 11.
9. *I. Thecla* (F) *caela* (Eduw ♀) Lotho (Eduw) w. 42. 59. 29x
10. *I. Parnassius* (F) *minithus* (L. sub) Eduw. 12. 59. 7.
11. *I. Thecla* (F) *acadica* B & C Eduw 40. 59. 29.

Specimens mostly from Mr Edwards

M



Plate No.

1. *S. Pamphila* (F) phylacus. ♂ (Aurug) *Hesperia vitellius*. L. Palma
Border of Arizona & Mex. Edw 32. 33. 40
2. *S. Piris* (Schr) rapae (L) ♀, from Europ. Edw 14. 397.
3. *S. Phycodes* (Drab) phuca. (Edw 26.) *Melipotis* JG. 1.
- ~~4. *S. Lymanore* (Mun)~~
5. *S. Cystineura* (Bois) amynone (Mun) Edw 27. ♀. (Guatemala Palmer)
6. *S. Nafta* (Mab) comma (Harr) fm Harris pipe. Edw 28. 35 14.
7. *S. Savina* (Swain) Lisa (Bdu) Edw 19. 35 12 (Cramer)
8. *S. Colias* (F) ulusa. fm Europe Edw 16. ♀ 35 10.
9. *S. Corias* (F) curthome (Bd) Edw 15. 35 10 (or Palmer. Arizona)
10. *S. Charis* (Mst. nemesis (Edw 33. 29 28 de de
11. *S. Thanaos* (Bdu) fumoralis (Scud) Edw 37. 35 35 (Texas)
- ~~11. *Eudacus* (Swain) simplicius~~
12. *S. Eudamus* (Swain) simplicius (Stoll) *curycles* (Lat) Edw 37. 35 38
13. *S. Pygus* (West) canus. Edw 35. 38. 36.
14. *S. Lycæna* (F) gya. Edw 38. 39. 31.
15. *S. Copacodes* (Spoger) arene (Edw 49. 38.
16. *S. Lanais* (Lat) benecice (Cram) *geppus* v. a 13/vii. Edw 19. 33 13
17. *S. Eodes* (Bdu) punctata Edw 27. 38 17.
18. *S. L. arua* (F) exilis Edw 48. 35 31.



S. Severo

Plate C

- 1 ♀ *Melittaea* (F) *aricia* (Houb) Edw 24, 59, 17. (Smart S Calif)
 2 ♂ *Chrysophanus* (Goub) *helioides* (Goub) Edw 24 *Polyommatus* Lat
 79, p. 33.
 2 ♀ *Melittaea* (F) unnamed fm 10th Smart South California Edw 24 59 17
 1 ♀ *Physciodes* (Doub) *batesii* (reab) Edw 26 59 17 *Encasia* (reab)
 1 ♂ *Physciodes* (Doub) *pratensis* (Behr) ♀ *campetris* (Behr) *fuschella* (Behr)
 Edw 26 59 17
 1 ♂ *Physciodes* (Doub) *myiella* (Edw 26.) *epula* 13d *collensa* Behr
 Edw 26 59 17
 7 ♀ *Argynnis* (F) *heliois* (Edw 28.) 59. 16.
 8 ♂ *Thacla* (Fab) *svira* Edw 40 59. 31.
 9 ♀ *Melittaea* (F) *tharos* (array) 13rd 47. *pharos* (Harr) Edw 26 59 17
 10 ♂ *Graeta* (Hrb) *comma* (Harr) Edw 28. 59 18
 11 ♂ *Thacla* (F) *melinus* (Hrb) Edw 39. 59. 30. (So California)
 12 ♀ *Vanessa* (F) *californica* (Bois) Edw 29. 59. 20.
 13 ♀ *Pyraonis* (Doub) *coryae* (Hrb) Edw 30 59. 21. (California)
 14 ♀ *Pieris* (Sch) *napa* (L) dim. var *halleda* (Scud) Edw. 13 59 7.
 15 ♀ *Pamphila* (F, comma L) *color* var (Scud) Edw 50 59 37.
 16 ♀ *Pieris* (Sch) *napa* (L) dim. var *halleda* & *napa* var *castoria* Reak
 Edw. 13 59 7.



Plate P

1. *L. Colias* (*L. aurea* Thoms) (Bois) Edw 16. J.S. 10 (South California D. Smart)
2. *do do do do do do do*
3. *do occidentalis* (Scud) Edw 17. J.S. 10 (Brit Am)
4. *L. Calceolus* (Bdw ♀) var. *nus* L. (*L. Marcellina* Cram) (♀ *eubula* Cram) Edw 15. J.S. 8
5. *L. Gneptha* (Hüb.) *zephyrus* (Edw 29) 25-18 (California)
6. *L. Lancis* (Lal) *berenicis* (Cram) *gurgus* S.A. B/W. Edw 19. J.S. 13.
7. *L. Melilaea* (L. Th.Kra) Edw 25. J.S. 17.
8. *L. Hyparchoia* (*L.*) *indigila* (Edw 38. J.S. 2c.)
9. *L. Phycodes* (Loub) *mytila* (Edw 26) *collinax* (Bohr) *Malitosa* California Edw. 26. J.S. 17. J.S. 28?
10. *L. Lamenias* (West) *nais* (Edw 27) *sp. fm New Mexico - 8th letter. 95.*
11. *L. Lamenitis* (*L.*) *meridomeris* (Edw 32. J.S. 23.)
12. *L. Mytila* (Edw) *caruce* (Edw 27.) *Phycodes* J.S. 17.

P



J. Sowers

Plate G

1. *J. Phycoides* (Doub.) *carlota* (Reak.) Melitaea (Edw) Eduw 26. 28. 17
2. *J. Lomonius* (West.) *palmerii* (Edw 38) JG. 28
3. *J. Thymelicus* (Spicer) *garita* (Reak.) Hesperia houschicki (Parker)
Edw 49. JG. 40
4. *J. Chrysophanus* (Doub.) *americana* (D'urbani) phidias. B&L Eduw 43. 79. 32.
(Sat. is variety)
5. *J. Melitaea* (F.) *alicia* (Doub.) Eduw 24. JG. 17.
6. *J. Phoebora* (Spicer) *catullus* (Cram) Sea 47/xxiv. Kosperia Eduw 58. JG. 35.
4. nixonoides
7. *J. Melitaea* (F.) *alicia* (Doub.) Eduw 24. JG. 17
8. *J. Papilio* (L.) *turnus* (L.) glauco var B&L 9. Eduw 11. JG. 3.
9. *J. Synchloe* (Boid.) *adjunctrix* (Scud.) lacinia (Edw Texas.) Eduw 27. JG. 11.
10. *J. Caenonympha* (West.) *california* (West.) californius (B&L) Eduw 33. JG. 17.
11. *J. Thecla* (F.) *halesus* (Cram) dolichos (Hul.) Juanita (Scud.) Eduw 38. JG. 24x
12. *J. Neonympha* (West.) *gemma* (Hul.) B&L as Satyris 62 Eduw 33. JG. 26.
13. *J. Anthocharis* (Bdo.) *sara* (Bdo.) Eduw 14. JG. 8. yellow variety
14. *J. Thecla* (F.) *halesus* (Cram) dolichos (Hul.) Juanita (Scud.) Eduw 38. JG. 29
15. *J. Anthocharis* (Bely) *ussonides* (B&L) Eduw 12. JG. 8

Q



J. Planché

Plate R.

1. ♀ *Colias* (*F.*) *edwardsii* (Behr) ♀ Edw. see p. 15 J.S. 11.
(accidental y omitted in report (Edw))
2. ♂ *do do do* ♂ *do do*
3. ♀ *Anthocharis* (Bdv) *reakirtii* ♀ Edw 15 J.S. 8.
4. ♀ *Imenitis* (*F.*) *lorquini* ♂ Edw 32 (Calif. + Arizona) J.S. 24.
5. ♂ *Anthocharis* (Bdv) *reakirtii* ♂ Edw 15 J.S. 8.
6. ♂ *Anthocharis* (*F.*) *cethura* (*F.*) ♀ *Cooperii* (Behr) *angelina* (Bdv) } Edw. 14 }
} J.S. 8
7. ♀ *Colias* (*F.*) *eurytheme* (Bdv) ♀ Edw. 15. J.S. 10
8. ♂ *Anthocharis* (Bdv) *cethura* (*F.*) ♂ Edw 14. J.S. 8.
9. ♂ *Anthocharis* (Bdv) *serra* (Bdv) ♂ Edw 14 J.S. 8.
10. ♀ *Colias* (*F.*) *eurydice* (Bdv) ♀ *hammi* var Edw. 15. J.S. 11.
11. ♂ *Anthocharis* (*B.*) *serra* (Bdv) ♂ Edw 14. J.S. 8.
12. ♀ *Tortrix* (Swain) *mexicana* (Bel) Keilig brodt Texas Edw 18 J.S. 12
13. ♂ *Calcedryas* (Bdv) *cubile* (L) 1842 24. ♀ var. 872 9/11. Edw 15. J.S. 8
14. ♂ *Synchlora* (Bdv) *atjuncta* (Scud) *lucania* Edw Texas Edw 27 J.S. 11

R



Plate B.

- 1 *S. Selysii* (West) charon (Edw 35. JS. 27.
- 2 *S. Erbia* (Linn) *Episoclea* (Butler) *rhodii* (Edw) (col. Mon. Mus.) Edw. 74
34 27.
- 3 *S. Erbia* (Dahl) *callias* (Edw 34. JS. 27.
- 4 *S. Chrysophanus* (Doub) *helloides* (B&W) Edw 43. JS. 32.
- 5 *S. Chironobas* (B&W) *chryxus* (West) *baygote* (Edw) (alae Scud.)
Edw 36. JS. 27.
- 6 *S. Physicodes* (Lout) *camillus* (Edw 26. JS. 17.
- 7 *S. Chrysophanus* (Doub) *virginianus* Edw 42. JS. 32.
- 8 *S. Chrysophanus* (Doub) *sinus* Edw 44. JS. 32.
- 9 *S. Callidryas* (B&W) *phreca* (L.) (Texas & Ill.) Edw 15. JS. 8.
- 10 *S. do do do* ♀ (do do) do do
- 11 *S. Hipparchia* (West) *reungii* Edw 35. JS. 26.
- 12 *S. Melitaea* (F) *rubigena* (Zehr, Edw 24. JS. 17.

S



J. Shaw

Plate. I.

1. *J. Pamphila* (F) *hanna* (Scud), *Hesperia* Edw 58. 39 40.
2. *J. do do Ethlius* (Cram), *Agnethus* (Bull 75)
Hesperia goniloba Edw 58 39 40
3. *J. Thanaos* (Bdw) *lucilius* (Linné), *J. nelsoni* (Edw) Edw 56. 39 39
4. *J. Thanaos* (Bois) *ausoniades* (Linné) Edw 56. 39 39.
5. *J. Thanaos* (Bdw) *icelus* (Linné) Edw 56. 39 39.
6. *J. Pamphila* (F) *ceruus* (Bdw 76) see also *Zabulon* Edw 50.
arogas. Bull. *ahaton* (Harr) Edw 50. 53. 39 40
7. *J. Thanaos* (Bdw) *persius* (Sua) ♀ *nisoniades* Edw 57. 39 39
8. *J. Thanaos* (Bois) *martialis* (Scud) ♀. Edw 57. 39. 39.
9. *J. Argynnis* (F) *hulena* (Edw) Edw 23. 39. 16.
10. *J. Thanaos* (Bdw) *briza* ♀ (Bull 66) *nisoniades* Edw 56. 39 39.
11. *J. Argynnis* (F) *leto* ♂ (Behr) Edw 20 39 16.
12. *J. do do do ♀ do do do*
13. *J. Thanaos*. (Bois) *persius* ♂ (Scud) *nisoniades* Edw 57 39 39
14. *J. do do martialis* (Sua) Edw 57. 39. 39.
15. *J. do do lucilius* ♀ (Linné) Edw 56. 39. 39.

all from Collection of Mr Sinter, except 2. 8. 11. & 12.
Ent. contributions in 23 Am. Rev. N.Y. Nat. cabinet Nat history 1869.

T



S. Raven

1. *Papilio* (L.) *dawnus* (Ba) Edw. 11, ♀♂, (Hayden exp. d. Aug 40)
 2. *Pimpla* (F.) *nana* (Edw. 50) *dacota* (Edw.) *indiguiti* (West) 7440
 3. *Pyrus* (West) *erictorum* (Ba) Edw. 55 ♂♂, 36. *alba* (Edw. 55)
 4. *Pyrus* (West) *tesellata* (Scud) *ocia* (Ba) *ocia* (West) Edw. 56 ♀♂, 56.
 5. *Fidonia* *functaria* (SwR) *ausaria* (Zettl) ♂, ♀, 123
 6. *Urogonis* (F.) *nevadensis* ♂ Edw. 21. 78. 16.
 7. *Salix* (West) *whitneyi* (Edw. 35.) *hofmani* (Stueker) 78 2. ♀
 8. *Parnassius* (Lat) *clochus* (Men) Edw. 12. 75 4. (Hayden expedition)
 9. *Paris* (Sch) *bakerii* (Edw. 12.) 75 7. ♀ (Hayden Exped.)
 10. *Lycana* (F.) *fea* (Edw. 48) 78 31. (do do)
 11. *Lemonias* (West) *norma* (Zettl) ♀. *lumata* (Behr) Edw. 3. 75 23
 12. *Parnassius* (Lat) *smithersi* (Houl) Edw. 12 75 7.
 13. *Militaria* (F.) *hofmanni* (Behr) *whitneyi* (Behr) Edw. 26. 78 17.

note 1) 5. not a butterfly or moth. if the antennae should be correct 5. *Edw.* 11, ♀♂

U



W. Leach

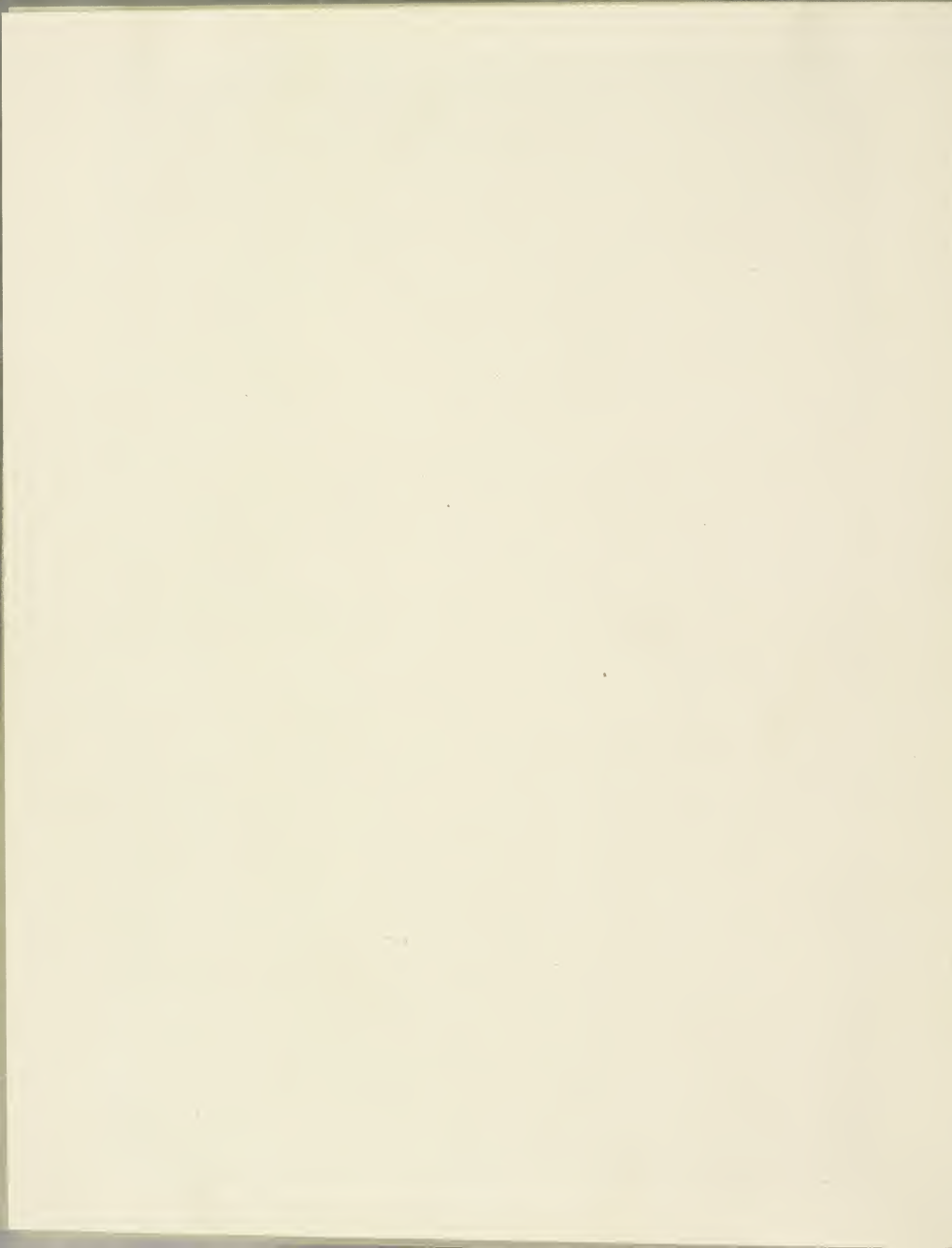
Plate V.

1. *I. Thecla* (Fr) *sglvinus* (Bd) Edw 40 T. 31.
2. *I. Piris* (Sch) *beckeri* (Edw 12) ♂ T. 7. (Whetor expedition)
3. *I. Lycaena* (Fr) *missa* (Edw 47) ♂ T. 32.
4. *I. Pieris* (Sch) *manipia* (Feeder) law (Sud) nironia (Bd)
5. *I. Teucra* (Fr) *melissa* (Edw 47) ♀ T. 32 (Whetor Expedition)
6. *I. Porcellus* (Lat) *eversmanni* (Munich) Edw. 12, T. 7.
7. *I. Saturnus* (West) *ariane* (Bd) Edw 38 T. 27.
8. *I. do* — *do* — *do* ♀ *do* *do* (*do*)
9. *I. Lycaena* (Fr) *glaucon* (Edw 46) T. 32 (*do*)
10. *I. Lytheus* (Fr) *carinata* (Cam) Edw. 37. T. 26.

*As per plate 10
 show of house
 Snake Tails*



J. L. Levee



Book taken apart. Leaves deacidified.
Some illustrations attached to new
back sheets. Lead whites converted.
Polyester film album leaves constructed
and post bound linen buckram album
constructed. December, 1979.

Carolyn Horton & Associates
490 West 22nd Street
New York, N.Y. 10011

