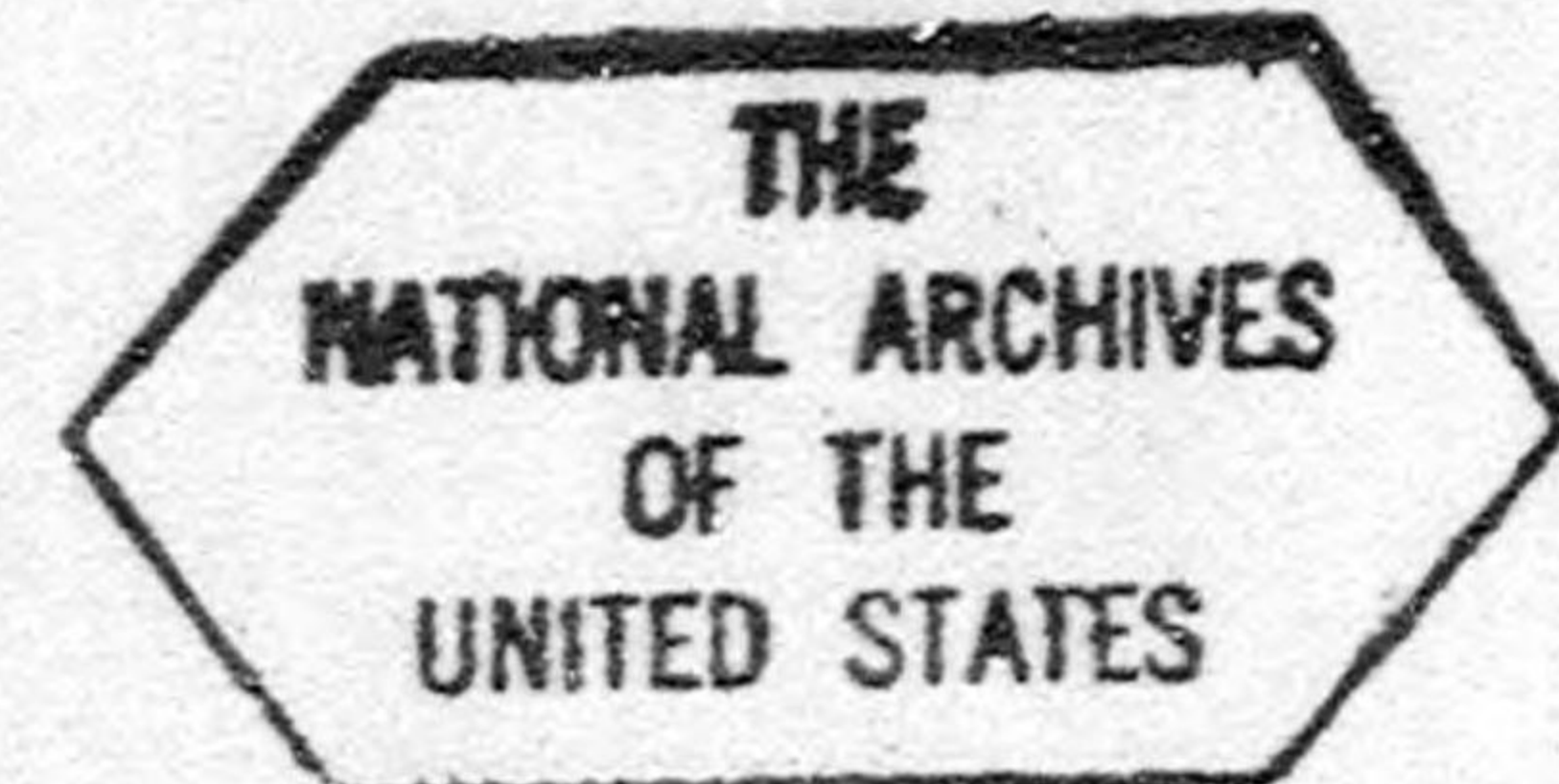


GHQ/SCAP Records(RG 331)
Description of contents



- (1) Box no. 2061
- (2) Folder title/number: (105)
Jitsugyo-No-Nihon Sha

(3) Date: ?

(4) Subject:

Classification	Type of record
340	c

(5) Item description and comment:

(6) Reproduction: Yes No

(7) Film no.

Sheet no.

THE LIST OF LEADING OFFICER AND STAFF OF THE JITSUGYO-NO-NIHON SHA CO. LTD.

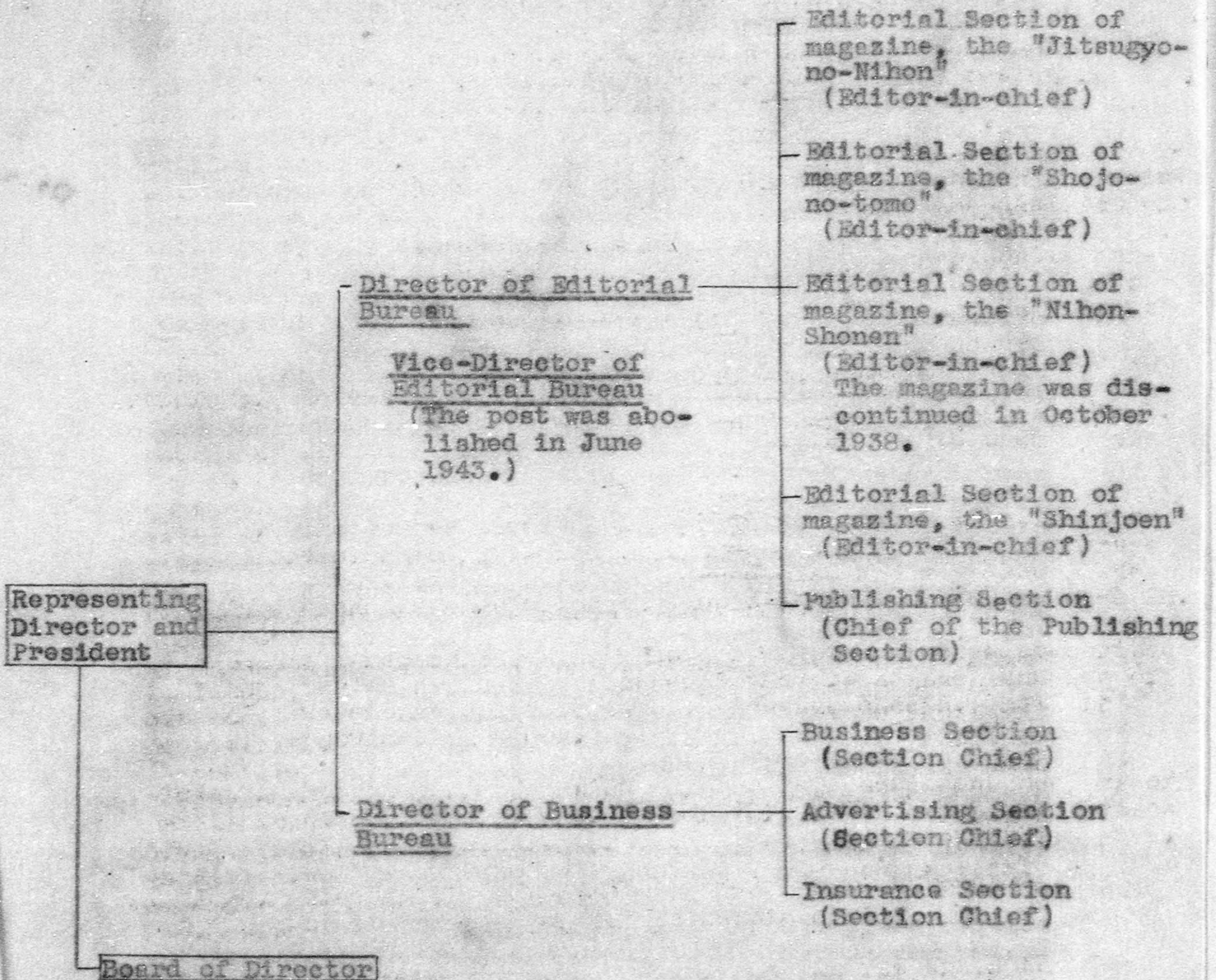
From July 1937
To December 1941

Position	Name	Date of Assumption	Date of Retirement	Present Professtion	Present Address	Remarks
Representing Director & President	GIICHI MASUDA ✓	Dec. 1, 1929	April 20, 1946	None	77, Wakamatsucho, Shinjuku-ku, Tokyo	
Director	OTOIMON OE	Dec. 1, 1929	Aug. 4, 1945		Died	
"	HIDEMICHI OGURA ✓	Dec. 1, 1929	July 30, 1942	None	579 Ogigatani, Kamakura City	
"	TADASHI UMEYAMA ✓	June 24, 1934		Representing Director & Standing Director of the Jitsugyo no-Nihan Sha	75, Yakuojicho, Ichigaya, Shinju-ku, Tokyo.	
"	YOSHIHIKO MASUDA	Dec. 24, 1937		Representing Director & President	74, Yakuojicho, Ichigaya, Shinju-ku, Tokyo.	
Auditor	KANNOSUKE ARIMOTO	June 25, 1934	Dec. 22, 1941	None	1481, Kitagata, Ukitamura, Jodogun, Okayama Pref.	
"	EIICHI TERAZAWA	Dec. 24, 1937	Dec. 24, 1942	Director	362, 4-chome, Kitazawa, Setagaya-ku, Tokyo.	

Position	Name	Date of Assumption	Date of Retirement	Present Profession	Present Address	Remarks
Director of Editorial Bureau	HIDEMICHI OGURA ✓	April 1936	July 1942	None	579, Ogigatani, Kamakura City	
Vice-Director of Editorial Bureau	IHEI NINOMIYA	April 1936	Sept. 1943 June		Died	This post was abolished in June, 1943.
Editor-in-chief of the "Jitsugyo-no-Nihon"	EIICHI TERASAWA ✓	Oct. 1931	Sept. 1945	Director of Editorial Bureau	362, 4-chome, Kitazawa, Setagaya-ku, Tokyo.	
Editor-in-chief of the "Shojo-no-tomo"	MOTOI UCHIYAMA ✓	Sept. 1931	Sept. 1945	Chief of Publishing Section	493, Honancho, Suginami-ku, Tokyo.	
Editor-in-chief of the "Nihon-Shonen"	IHEI NINOMIYA	Dec. 1933	Oct. 1938		Died	The magazine was discontinued on Oct. 1938. Since April, 1936, took the post of Vice-Director of Editorial Bureau concurrently
Editor-in-chief of the "Shinjoen"	MOTOI UCHIYAMA ✓	Sept. 1936	Nov. 1940	Chief of Publishing Section	493, Honancho, Suginami-ku, Tokyo	took the post of Editor-in-chief of the "Shojo-no-tomo" concurrently
"	YUICHI KAMIYAMA ✓	Nov. 1940		Editor-in-chief of the "Shinjoen"	428, 1-chome, Nishida-machi, Suginami-ku, Tokyo	
Chief of Publishing Section	HIDEMICHI OGURA ✓	April 1936	July 1942	None	579, Ogigatani, Kamakura City	took the post of Director of Editorial Bureau concurrently
Director of Business Bureau	OTOJMON OBI	April 1936	July 1942		Died	
Chief of Business Section	TADASHI UMEYAMA ✓	April 1936	July 1942	Representing Director & Standing Director	75, Ya juokicho, Ichigaya, Shinjuku, Tokyo.	

Position	Name	Date of Assumption	Date of Retirement	Present Profession	Present Address	remarks
Chief of Advertising Section	SADANOBU YOSHIDA	April 1936	Dec. 1942	Chief of Social Welfare Section	c/o Kimura Apartment house, 146, 1-chome, Nishi Ogikubo, Suginami-ku, Tokyo.	
Chief of Insurance Section	OTOIMON OE	April 1936	July 1942		Died	Took the post of Director of business bureau con- currently.

SET UP OF JITSUGYO-NO-NIHON SHA (From July 1937
To Dec. 1941)



DIVISION OF DUTIES OF
THE JITSUGYO-NO-NIHON SHA

From July, 1937
To December, 1941

President

1. The President represents the company and presides over its general management.

Editorial Bureau

2. Director of Editorial Bureau is in charge of the Bureau, and decides various policies concerning publication and magazine editing.
3. Vice-Director of Editorial Bureau assists Director of the Bureau.
4. Section Chief of Editorial Bureau, i.e. editor-in-chief of each magazine and chief of publication section, executes each duty under the direction of Director of Editorial Bureau.

(Note) The planning conference with regard to each publication and editing is composed of Director and Vice-Director of Editorial Bureau and members of each section.

Business Bureau

5. Director of Business Bureau presides the Business Bureau and is in charge of the execution of business affairs of the company.
6. Section Chief of Business Bureau shares the following works under the direction of the Bureau Director:
 - (1) Chief of Business Section is in charge of account, purchasing and selling.
 - (2) Chief of Advertising Section is in charge of advertising contact as well as of public relations.
 - (3) Chief of Insurance Section is in charge of fire insurance agency.

(Note)

During the whole period designated by the government, the Jitsugyo-no-Nihon Sha was a joint-stock company as today. However, the actual management of the Company was still in the hand of the President as in the time of his own management. Thus, the status of joint-stock company meant nothing but to show the company's capital structure. The officers like directors and auditors, except the President, were nominal title holders who were elected as such

only to abide legal requirements; accordingly, officers' meeting was almost completely nominal, too. There was a clear line of demarcation between works of editing and business. Editing Bureau never meddled into Business Bureau, and the latter had nothing to do with the planning of the former. Both Directors of Editing and Business Bureaus confined their works in the matter of their own interest, and the coordination between these two bureaus was made possible only by the supervision of the President.