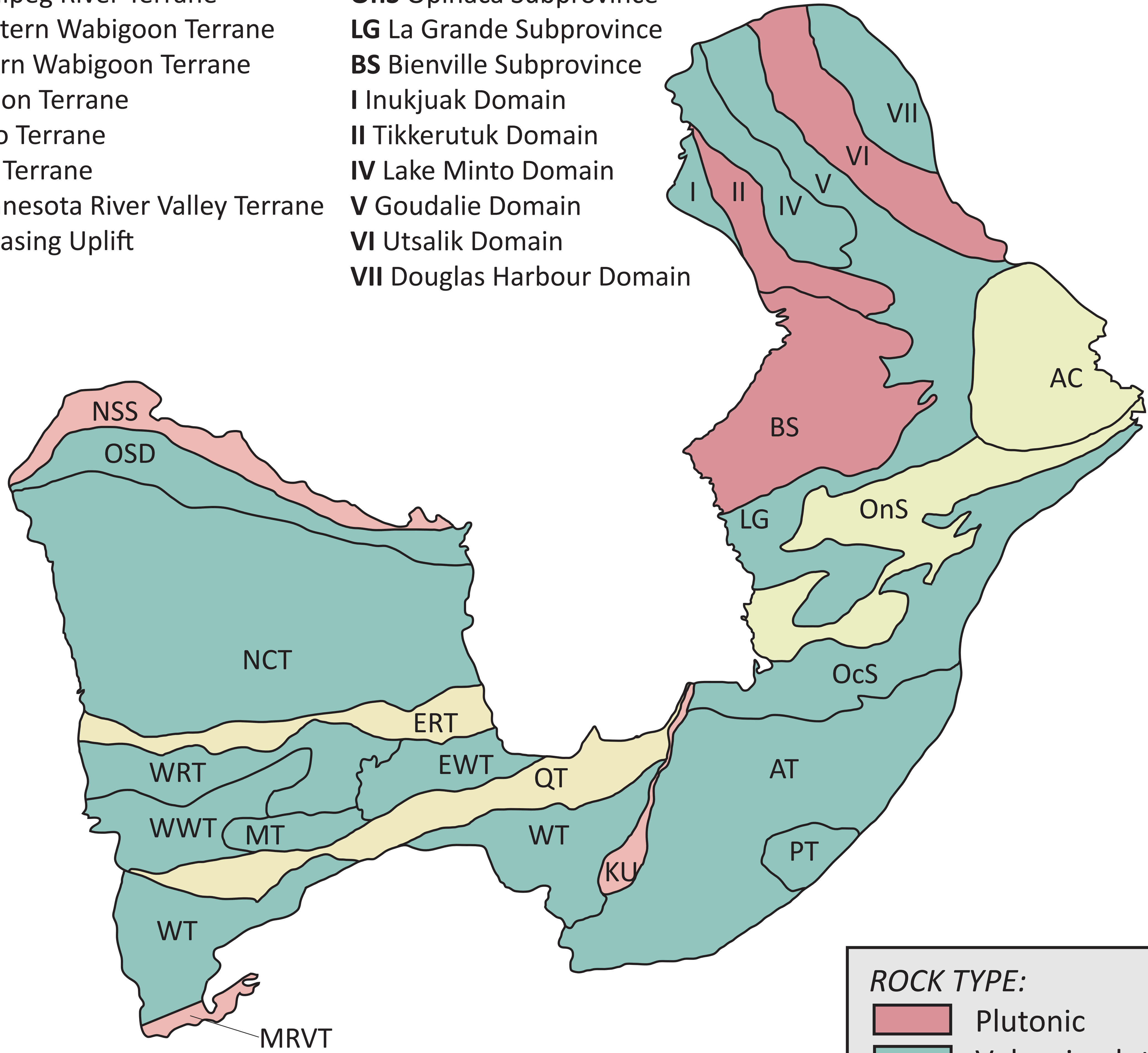


ARCHEAN SUBPROVINCE

- NSS** Northern Superior Superterrane
- OSD** Oxford-Stull Domain
- NCT** North Caribou Terrane
- ERT** English River Domain
- WRT** Winnipeg River Terrane
- WWT** Western Wabigoon Terrane
- EWT** Eastern Wabigoon Terrane
- MT** Marmion Terrane
- QT** Quetico Terrane
- WT** Wawa Terrane
- MRVT** Minnesota River Valley Terrane
- KU** Kapuskasing Uplift

- AT** Abitibi Terrane
- PT** Pontiac Terrane
- OcS** Opatca Subprovince
- AC** Ashuanipi Complex
- OnS** Opinaca Subprovince
- LG** La Grande Subprovince
- BS** Bienville Subprovince
- I** Inukjuak Domain
- II** Tikkerutuk Domain
- IV** Lake Minto Domain
- V** Goudalie Domain
- VI** Utsalik Domain
- VII** Douglas Harbour Domain



ROCK TYPE:

	Plutonic
	Volcanic-plutonic
	Metasedimentary
	High-grade gneiss