



国立国会図書館 其昔忍振摺 4巻 207-783



ガラス使用

其昔忍戾

摺

二

大

207
783



天保十九年辰年
 長嶋町五丁目
 大野屋惣八
 松亭主人題

一
 此の書は筆のあはれり何処より足らぬ筆の心むすべし評判のよふ
 井今未あまもゆふ年のもまももごめあかしくけし仁葉も揃ぬ
 文章の顔赤木の戯れも美善勸め悪兵懲るて古人の技を失るるも
 長諸才子の編冊子只一日の戯場の換も空の諸君告められたる
 こと此作を幕の朝任言三建目以前の古きりこととせらるるは願ふ

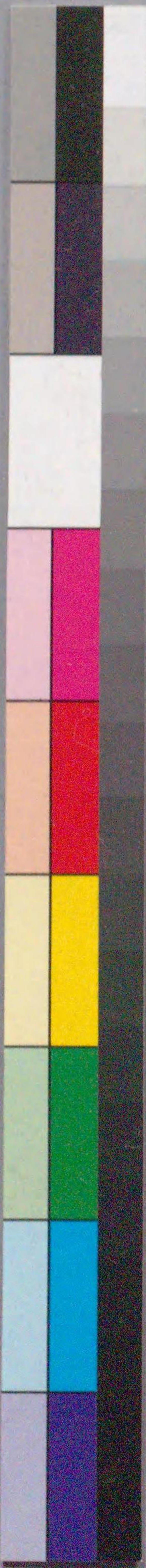
降春雨
 且々老々
 且々老々
 且々老々

天保十九年辰年

長嶋町五丁目

大野屋惣八

松亭主人題





破落戸
 絹賣の治郎作
 信夫屋の跡をたぐり日夜
 遊興嬉樂を究むる國

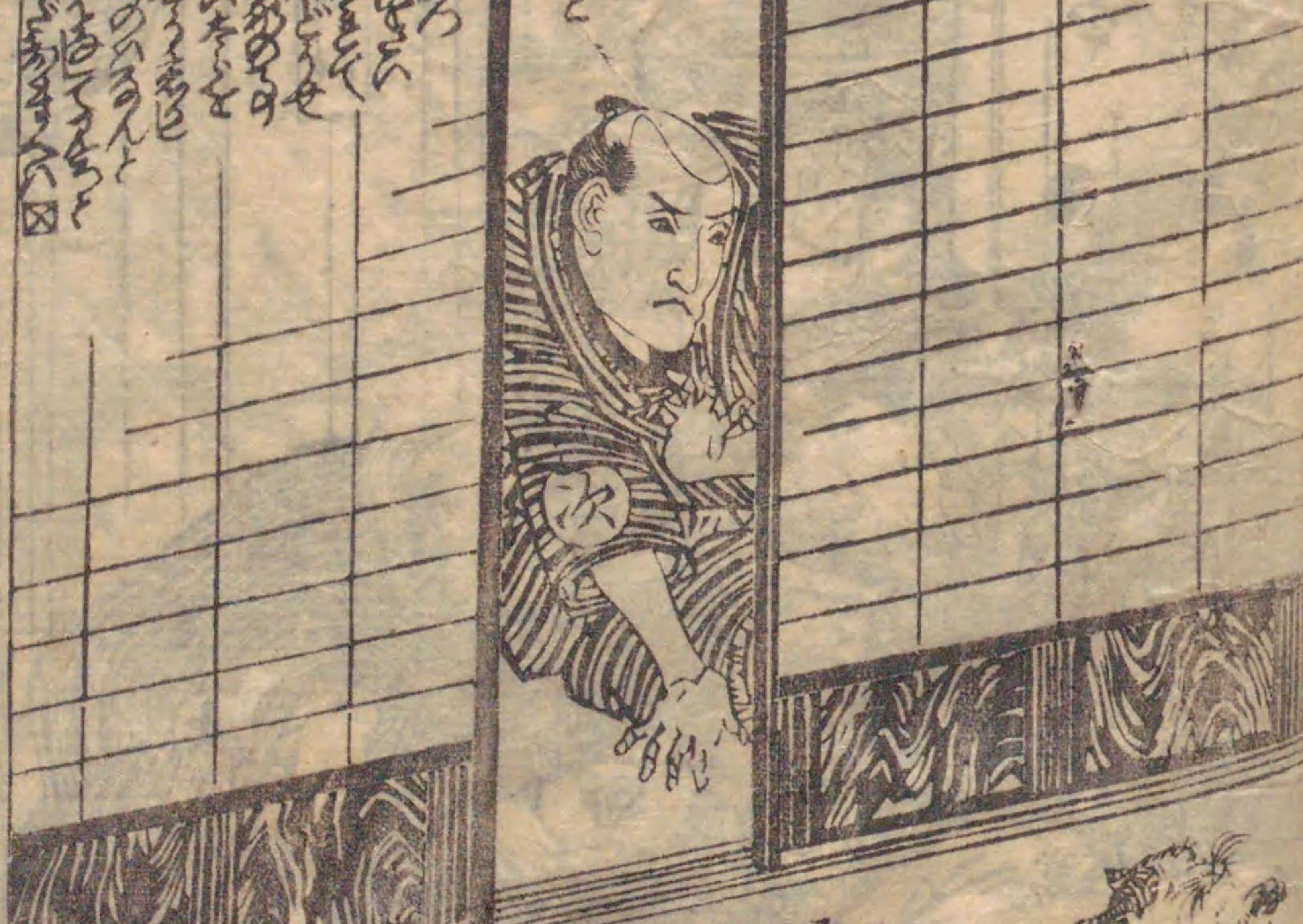
積累
 其人数

俱に身乃
 おろし
 名後の
 知れし

不義の富貴を
 浮き雲の如く
 正路の貧賤を
 山嶽の動



Handwritten text in vertical columns at the top of the left page, likely a preface or introductory text.



Handwritten text in vertical columns at the bottom of the left page, continuing the narrative.

Handwritten text in vertical columns at the top of the right page.



Handwritten text in vertical columns at the bottom of the right page.





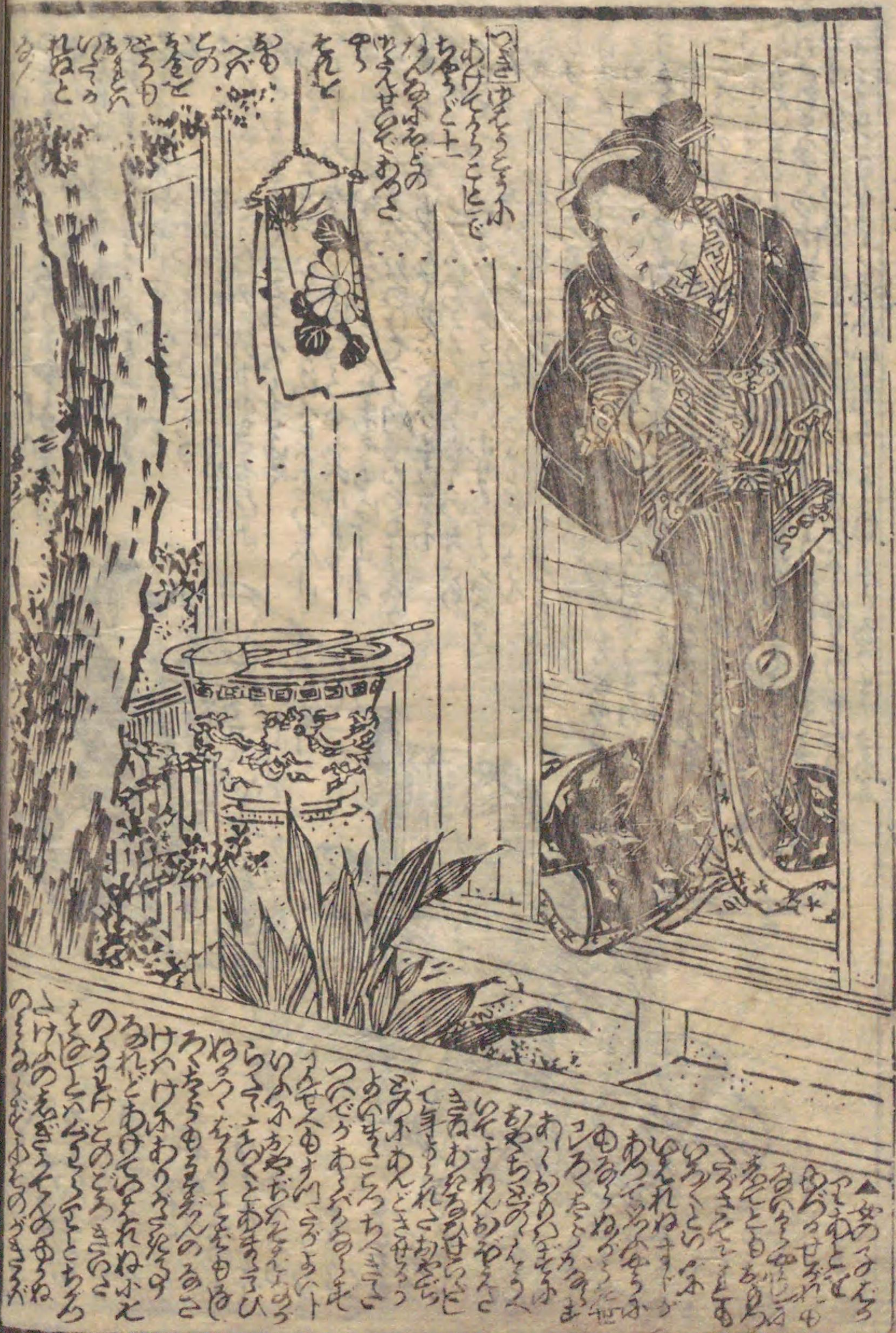
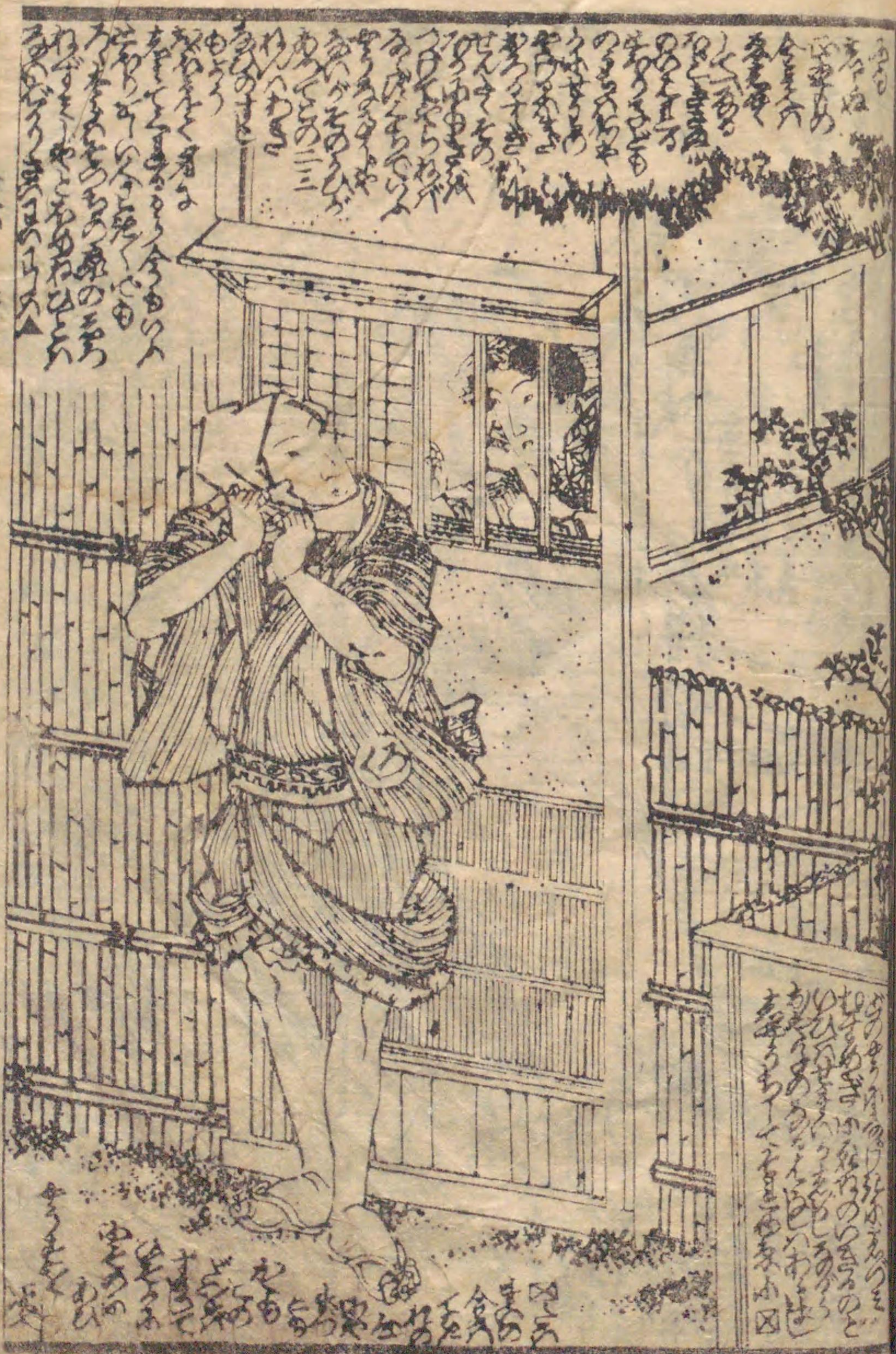
其昔

全部四角の金
上下の二層の
金櫃の入り口
は、







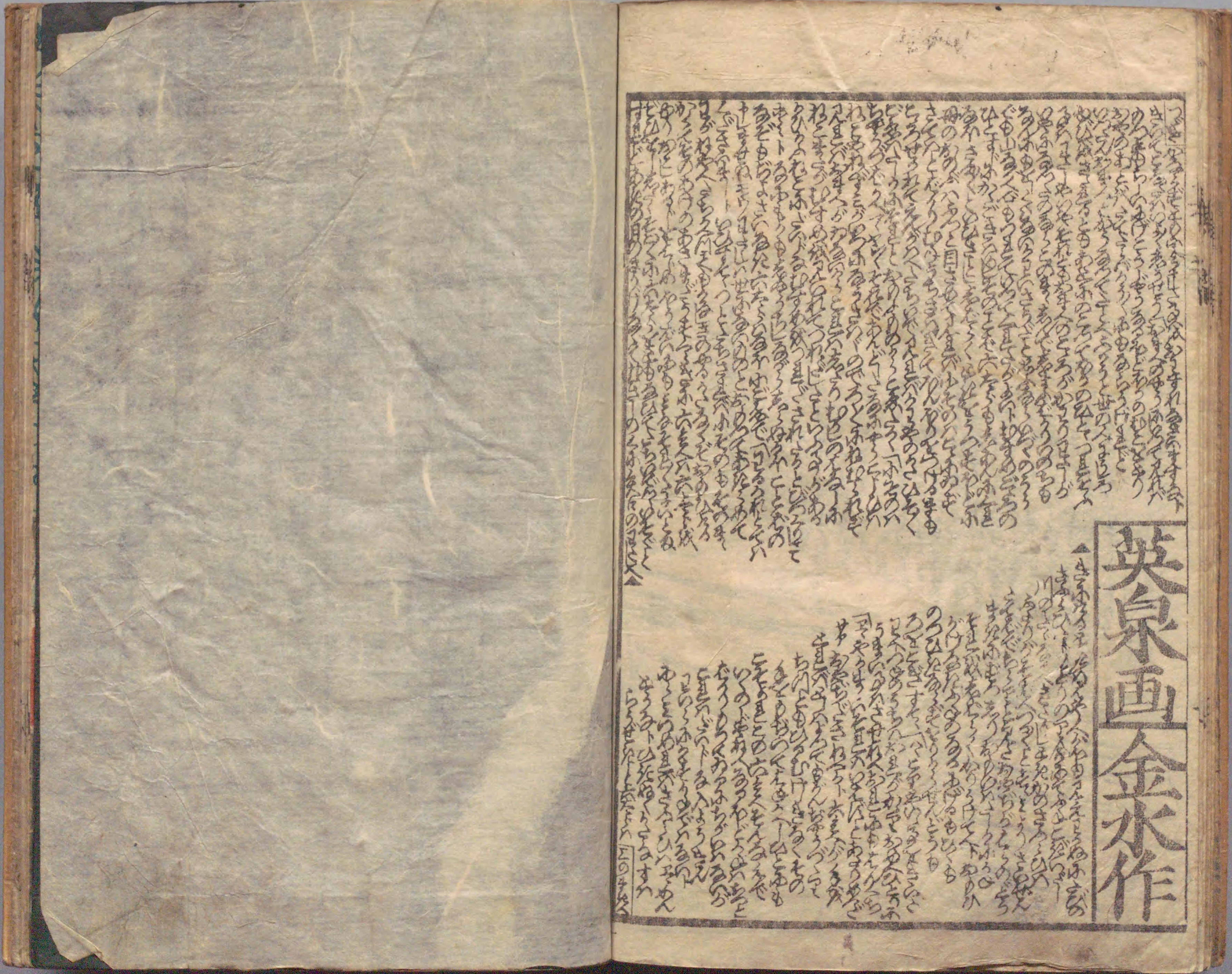
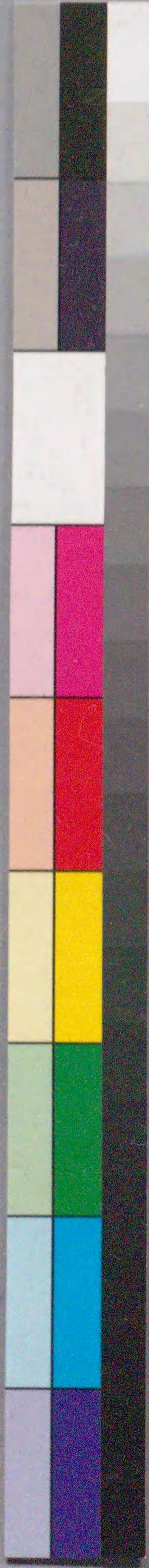




其昔

其昔





英泉画 金水作

Handwritten text in vertical columns, likely a commentary or description related to the painting mentioned in the title.







Handwritten text in vertical columns, likely a chapter introduction or a long poem. The text is densely packed and covers most of the page area.



Handwritten text in vertical columns, continuing the narrative or poem from the left page.

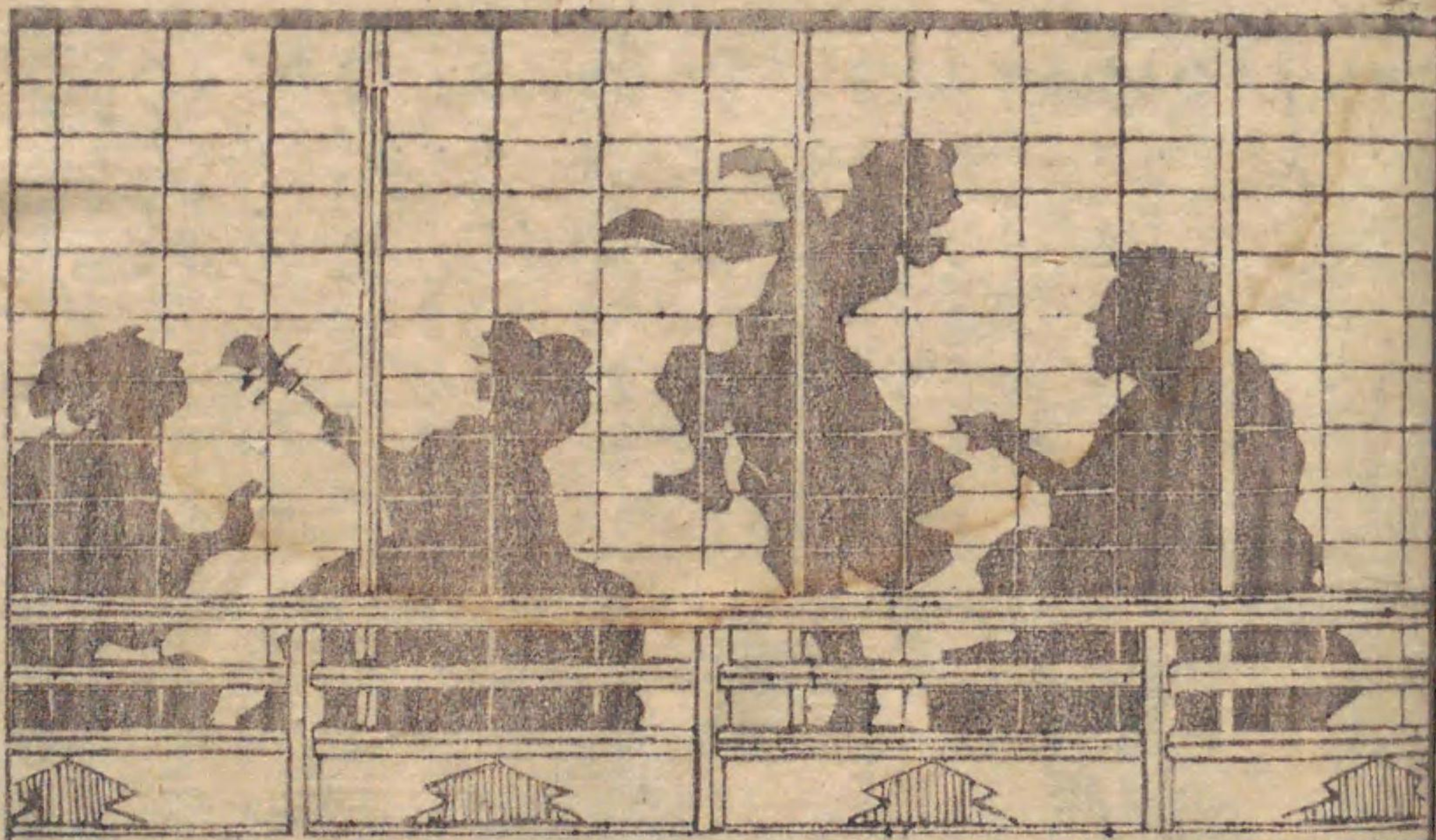


Handwritten text in vertical columns, located below the illustration on the right page.









Handwritten Japanese text in vertical columns, likely a play script or commentary. The text is densely packed and covers most of the page area below the illustration.

Handwritten Japanese text in vertical columns, continuing the script or commentary from the previous page. The text is densely packed and covers most of the page area above the illustration.



Handwritten Japanese text in vertical columns, continuing the script or commentary. The text is densely packed and covers most of the page area below the illustration.







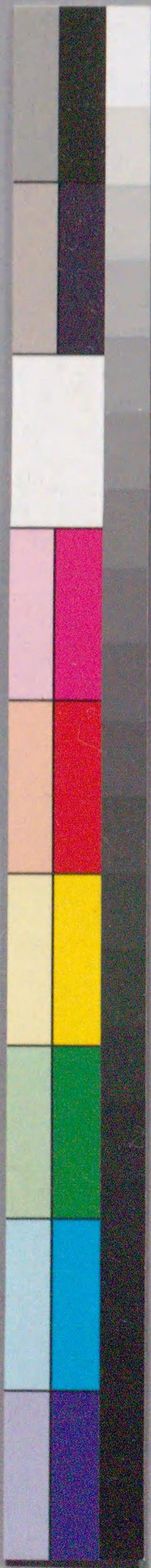
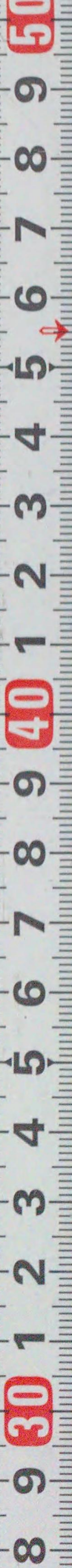




207
783

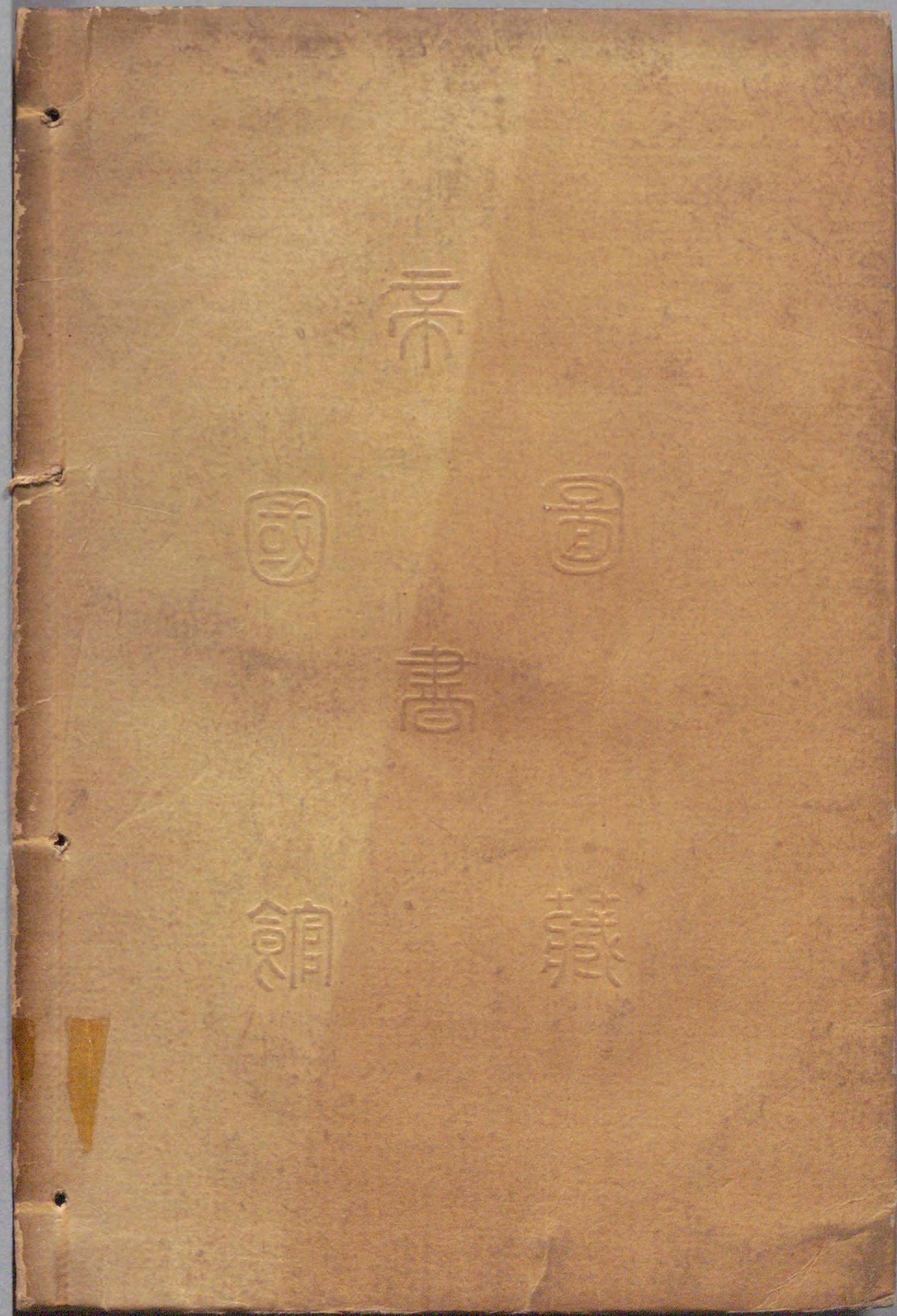


207
783





国立国会図書館 其昔忍振摺 4巻 207-783



ガラス使用

