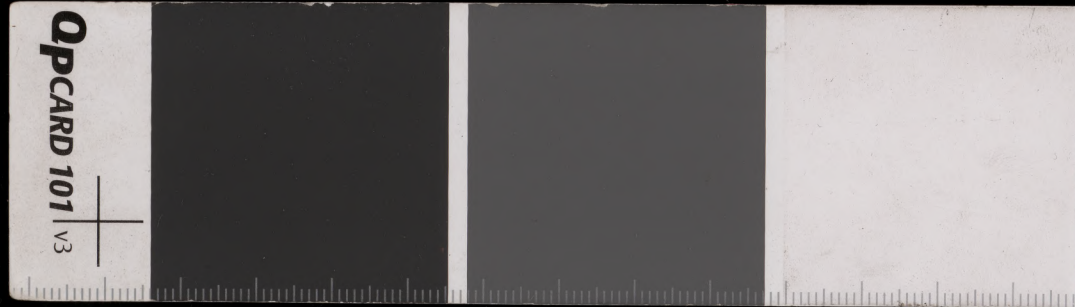


၅၅၅

ဟံသာဝတီပြည်သူ့အဖွဲ့အစည်းတို့၏ အဖွဲ့ဝင်များသည် ဤနေ့တွင် အစည်းအဝေး ပြုလုပ်ခဲ့ကြောင်း သိရပါသည်။





Handwritten Burmese script on a palm leaf manuscript. The text is arranged in approximately five horizontal lines across the length of the leaf. The script is a traditional form of Burmese writing, likely used for religious or historical records. The leaf shows signs of age, including some staining and wear at the ends.

Handwritten Burmese script on a palm leaf manuscript. The text is arranged in approximately 10 horizontal lines. The script is a traditional form of Burmese, likely used for religious or historical records. The leaf shows signs of age, including some dark spots and a horizontal crease across the middle. The text is densely packed and covers most of the length of the leaf.

Handwritten text in Burmese script on a palm leaf manuscript. The text is arranged in approximately five horizontal lines. The script is a traditional form of Burmese, likely from the 19th or early 20th century. The leaf shows signs of age, including some dark spots and a small hole. The text appears to be a continuous passage, possibly a religious or historical record.

Handwritten Burmese script on a palm leaf manuscript. The text is arranged in approximately five horizontal lines across the length of the leaf. The script is a traditional form of Burmese, likely used for religious or historical records. The leaf shows signs of age, including some dark spots and wear at the ends.

Handwritten Burmese script on a palm leaf manuscript. The text is arranged in approximately five horizontal lines across the length of the leaf. The script is a traditional form of Burmese writing, likely used for religious or historical records. The leaf shows signs of age, including some dark spots and a slightly uneven texture.

၈၈

Handwritten Burmese script on a palm leaf manuscript, consisting of approximately 10 lines of text.

Handwritten Burmese script on a palm leaf manuscript. The text is arranged in approximately 10 horizontal lines, written from left to right. The script is a traditional form of Burmese, likely used for religious or historical records. The leaf shows signs of age, including some dark spots and a hole near the center. The text is densely packed and covers most of the length of the leaf.

Handwritten Burmese script on a palm leaf manuscript. The text is arranged in approximately five horizontal lines across the length of the leaf. The script is a traditional form of Burmese writing, likely used for religious or historical records. The leaf shows signs of age, including some dark spots and a slightly uneven texture.

Handwritten Burmese script on a palm leaf manuscript. The text is arranged in approximately five horizontal lines. The script is a traditional form of Burmese, likely used for religious or historical records. The leaf shows signs of age, including some staining and a small dark hole near the center. The text is densely packed and covers most of the length of the leaf.

Handwritten text in an ancient script, likely Burmese, inscribed on a palm leaf. The text is arranged in approximately 10 horizontal lines across the length of the leaf. The script is dense and cursive, with some characters appearing to be ligatures. There are two distinct circular holes or indentations on the leaf, one located roughly in the middle and another towards the right side. The leaf itself is aged and shows some texture and discoloration.

Handwritten Burmese script on a palm leaf manuscript. The text is arranged in approximately 10 horizontal lines. The script is a traditional form of Burmese, likely used for religious or historical records. The leaf shows signs of age, including a prominent dark hole in the middle section and some fraying at the edges. The characters are finely etched into the surface of the dried leaf.

Handwritten Burmese script on a palm leaf manuscript strip. The text is arranged in approximately five horizontal lines. A significant portion of the middle section is obscured by a large, irregular hole in the leaf. The script is finely etched into the surface of the dried leaf.

ဟောသောတရားတော်တို့ကို
အားတော်ဖြင့် နားထောင်
သောတရားတော်တို့ကို
အားတော်ဖြင့် နားထောင်
သောတရားတော်တို့ကို
အားတော်ဖြင့် နားထောင်