

F 566
.S72

SOUVENIR
OF THE
COPPER COUNTRY
UPPER PENINSULA
OF
MICHIGAN

F566
.S72



Class F 566

Book .S72

Copyright N^o _____

COPYRIGHT DEPOSIT.

LIBRARY of CONGRESS

Two Copies Received

FEB 5 1904

Copyright Entry

Dec. 19-1903
CLASS 7-898
XXc. No.
COPY B

FORWARDED BY
SERIALS TO

1903



THE simple beauty of the Copper Country of Michigan, the vastness of its enterprises and the activity of its marts are impressive in their very nature. Their pictures are more pleasing when left unmarred by wordy descriptions. Scenes may be absorbed and grasped by the eye which no language can describe.

This book is a simple collection of pictures, characteristic of scenes which are familiar to those acquainted with the Copper Country. The effort has been put forth to make it as comprehensive as possible.

The winning of the copper from the earth constitutes the dominant industry of the district, and is deserving of first place in a representation of the Copper Country. All features of the industry are shown—in the depths of the mine; on the surface, where the world's most massive machinery furnishes power to actuate the air drills and operate the hoisting cables; in the mills and smelters, where the metal is refined into copper bullion; along the wharves, where ships are laden with the product, to carry it to lower lake ports, whence it is distributed throughout the world.

Historic points of interest are given. There is a picture of the old Cliff Mining Camp, one of the earliest, and, in its day, one of the most populous and prosperous communities in the Upper Peninsula. To-day almost every house that was ever erected there is standing, most of them dating back nearly half a century, but the place is deserted—hundreds of houses with bare walls staring out through bleak windows, and scarcely a dozen souls to inhabit them. The old mine workings are abandoned for more profitable deposits of mineral.

Pictures are given which show the natural beauty of the Copper Country. Pleasing views are so bountifully bestowed by nature that it is a difficult task to choose the most impressive. But enough are given to create a taste for more—a taste that can be gratified to its fullest only by rambling among the vales and hills, through the forests and along the banks of the quiet streams and the shores of the mighty Unsalted Sea.

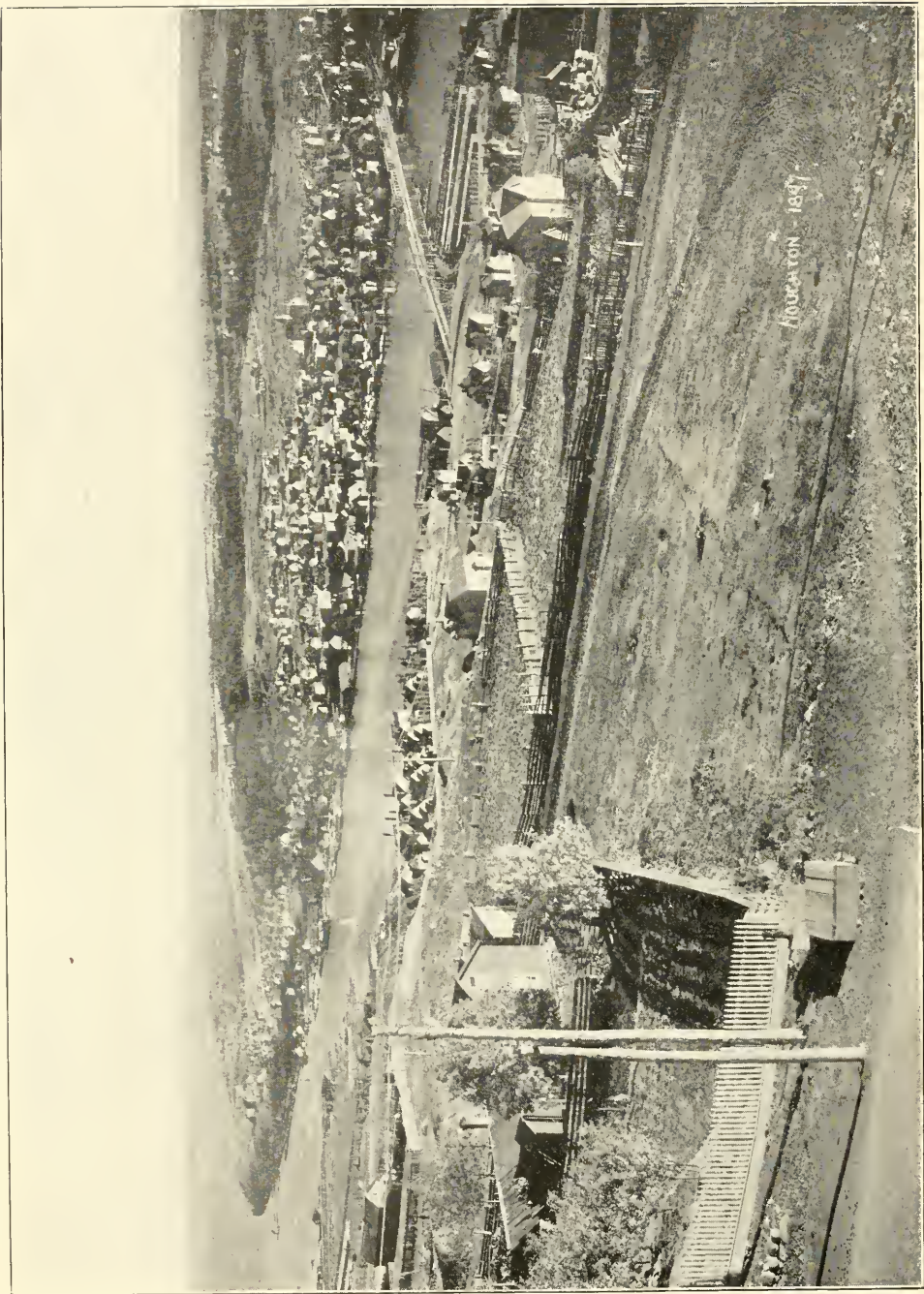
The new South Range is thoroughly pictured. This is the young giant which in the last five years has forged forward and wrought from the ground which was the rooting place for an unbroken forest a group of copper mining camps that stand to-day close rivals to the older camps which have been half a century in the making.

Such pictures constitute within themselves a story of beauty, power and pathos which no words can enhance. Those responsible for the book have drawn from its preparation a wealth of pleasure. Courtesies have been extended from all sources, in recompense for which the sincerest expression of appreciation is now extended. May those into whose hands the book shall come glean from it all the subtle meaning and all the stirring thoughts which its pictures are capable of inspiring. It will then be an epic, indeed—a poem, a song, a burst of harmony beyond the power of words to utter.

B. E. TYLER,

Publisher,

Houghton, Mich.



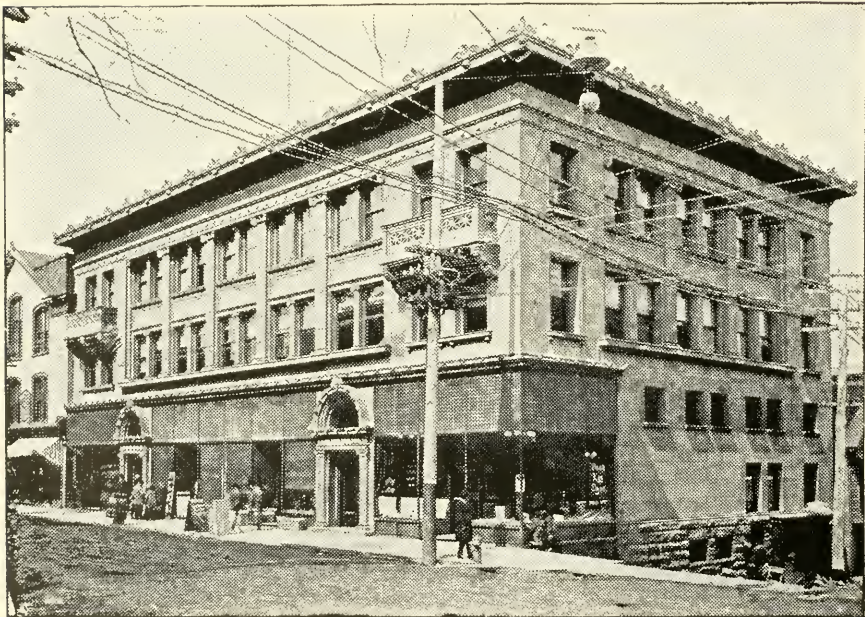
Houmaton - 1937



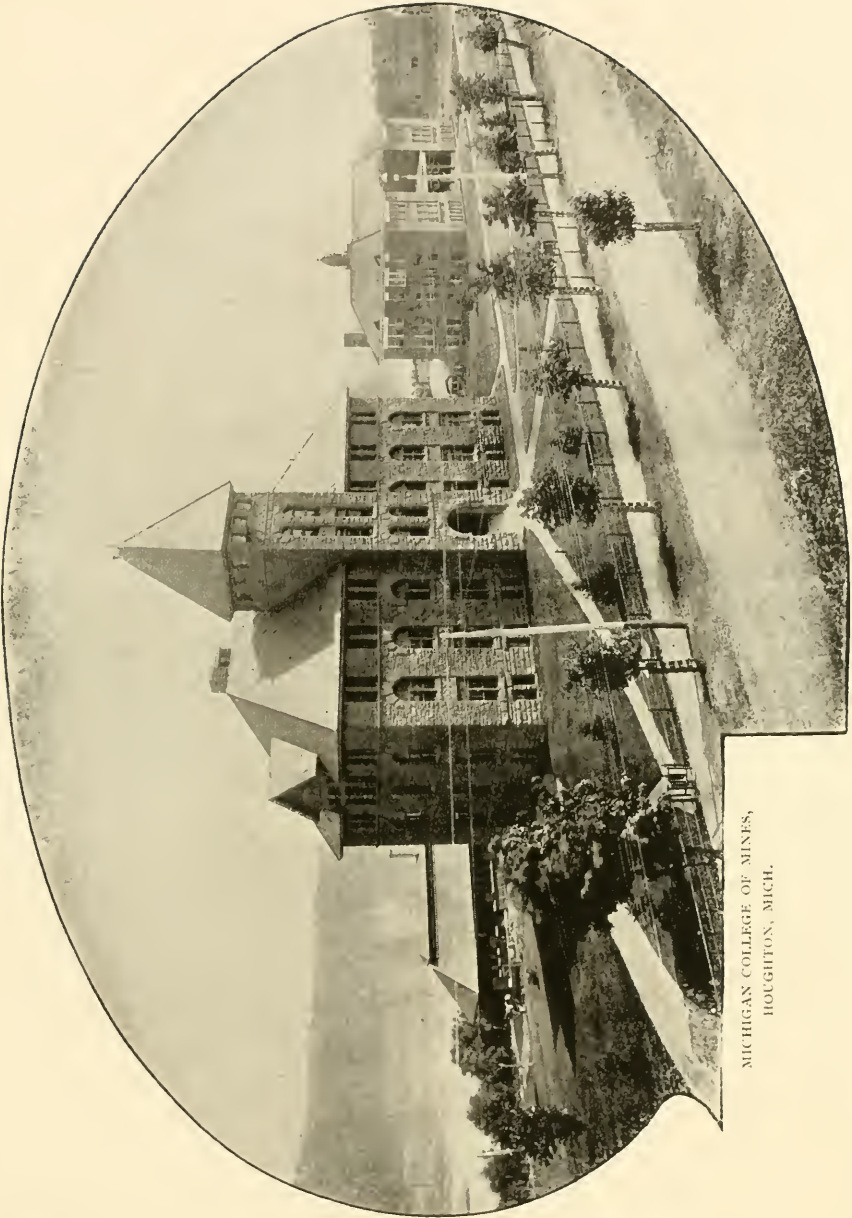
ASSAYERS MICHIGAN COLLEGE OF MINES.



HOTEL DEE, HOUGHTON, MICH.



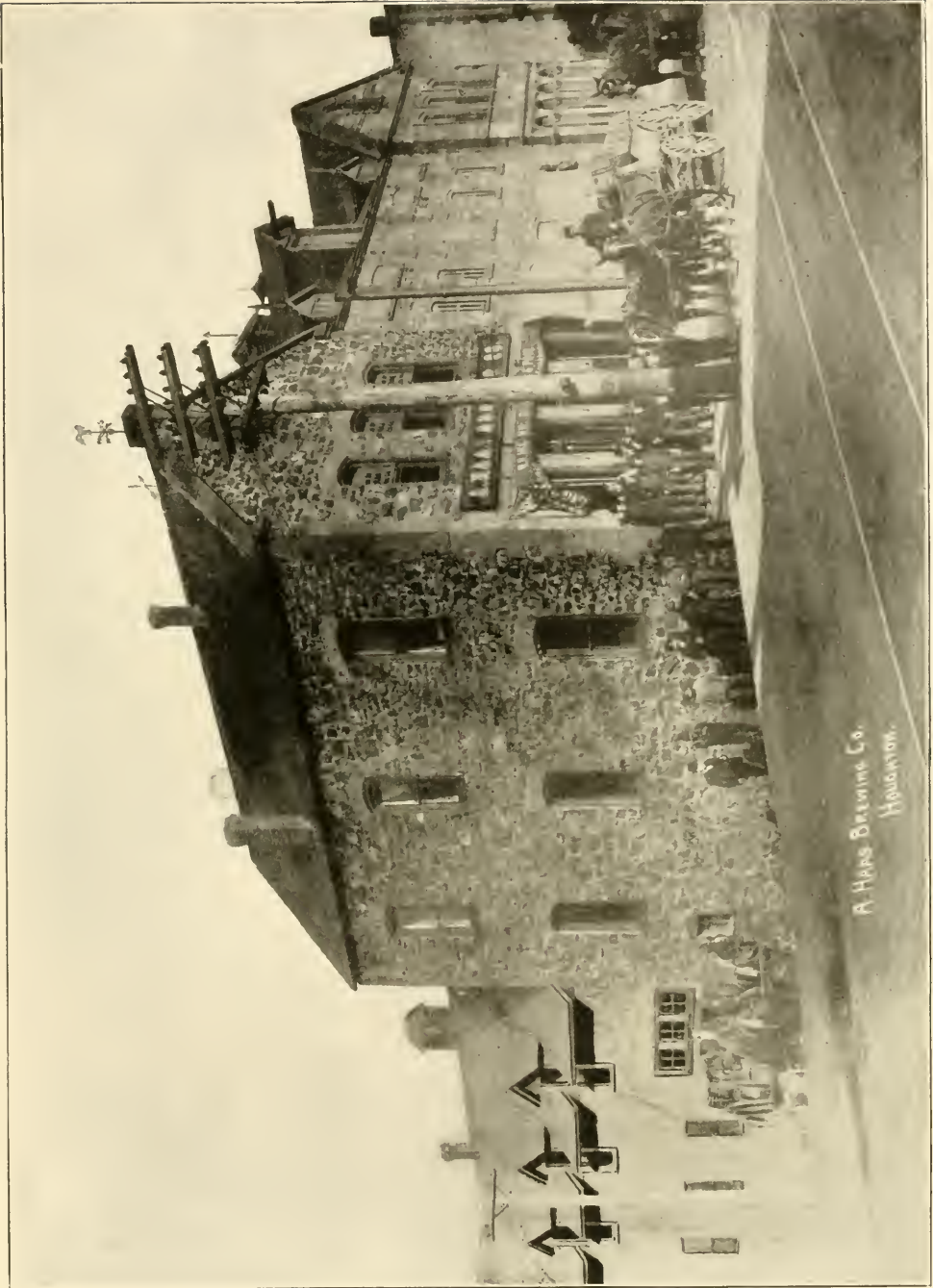
SHELDEN-DEE BUILDING, HOUGHTON, MICH.



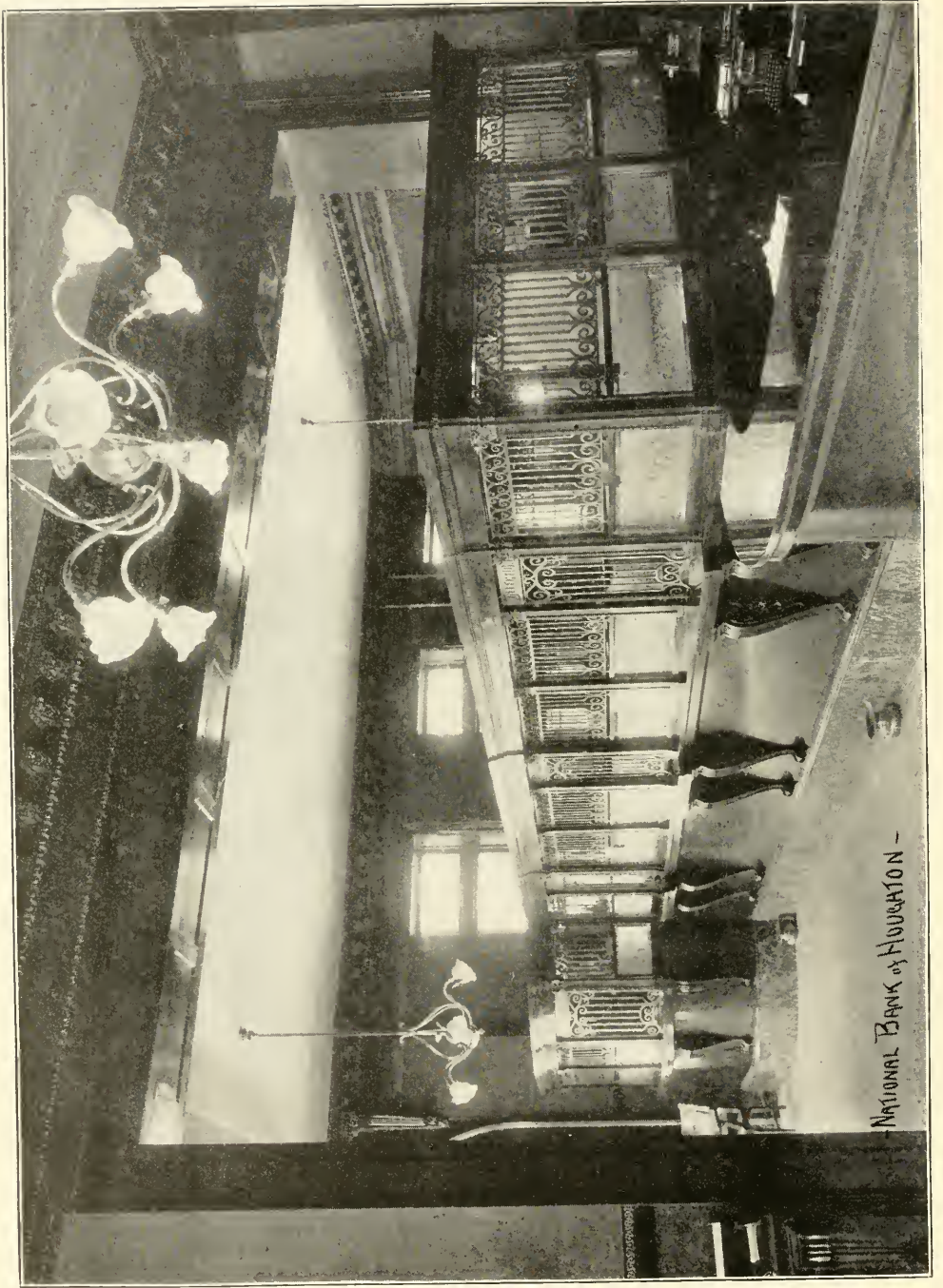
MICHIGAN COLLEGE OF MINES,
HOUGHTON, MICH.



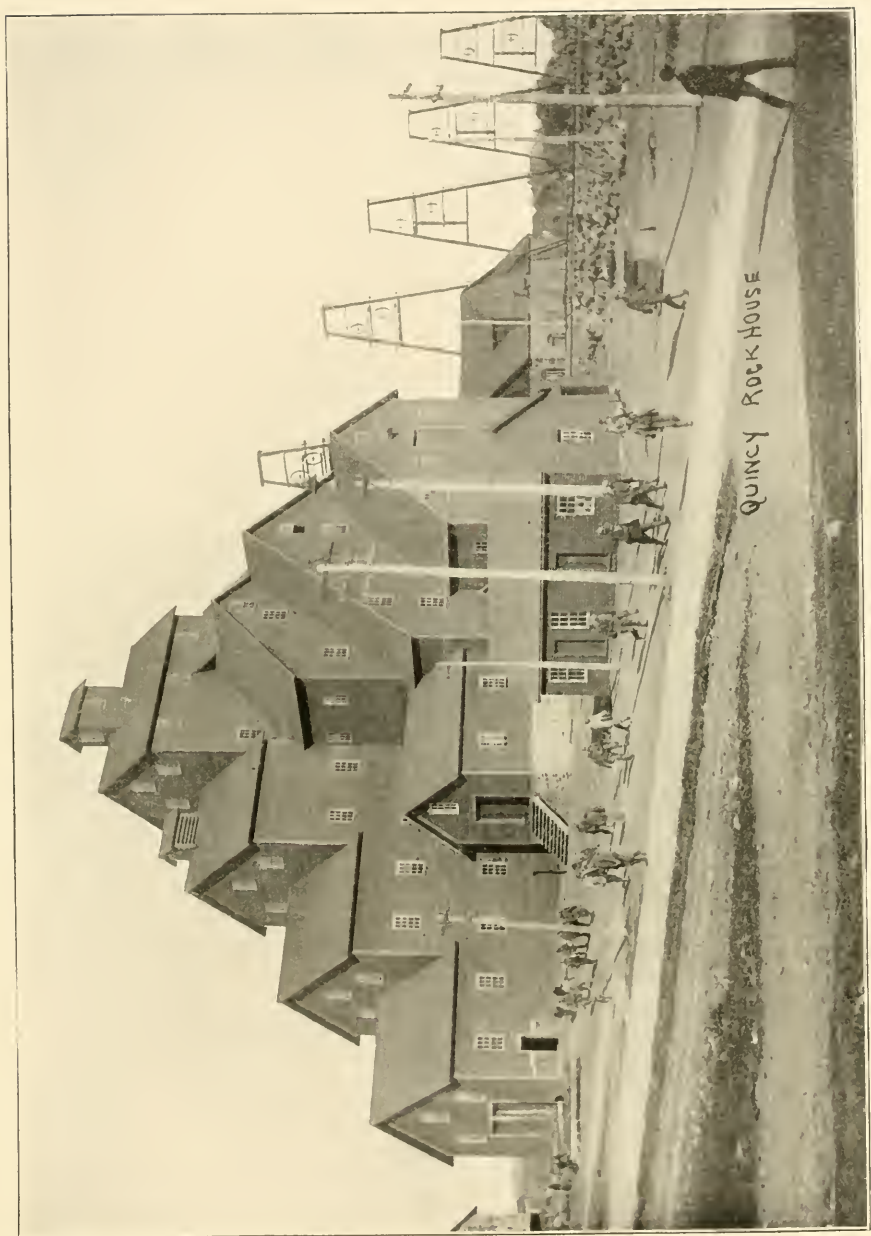
DOUGLAS HOUSE, HOUGHTON, MICH.

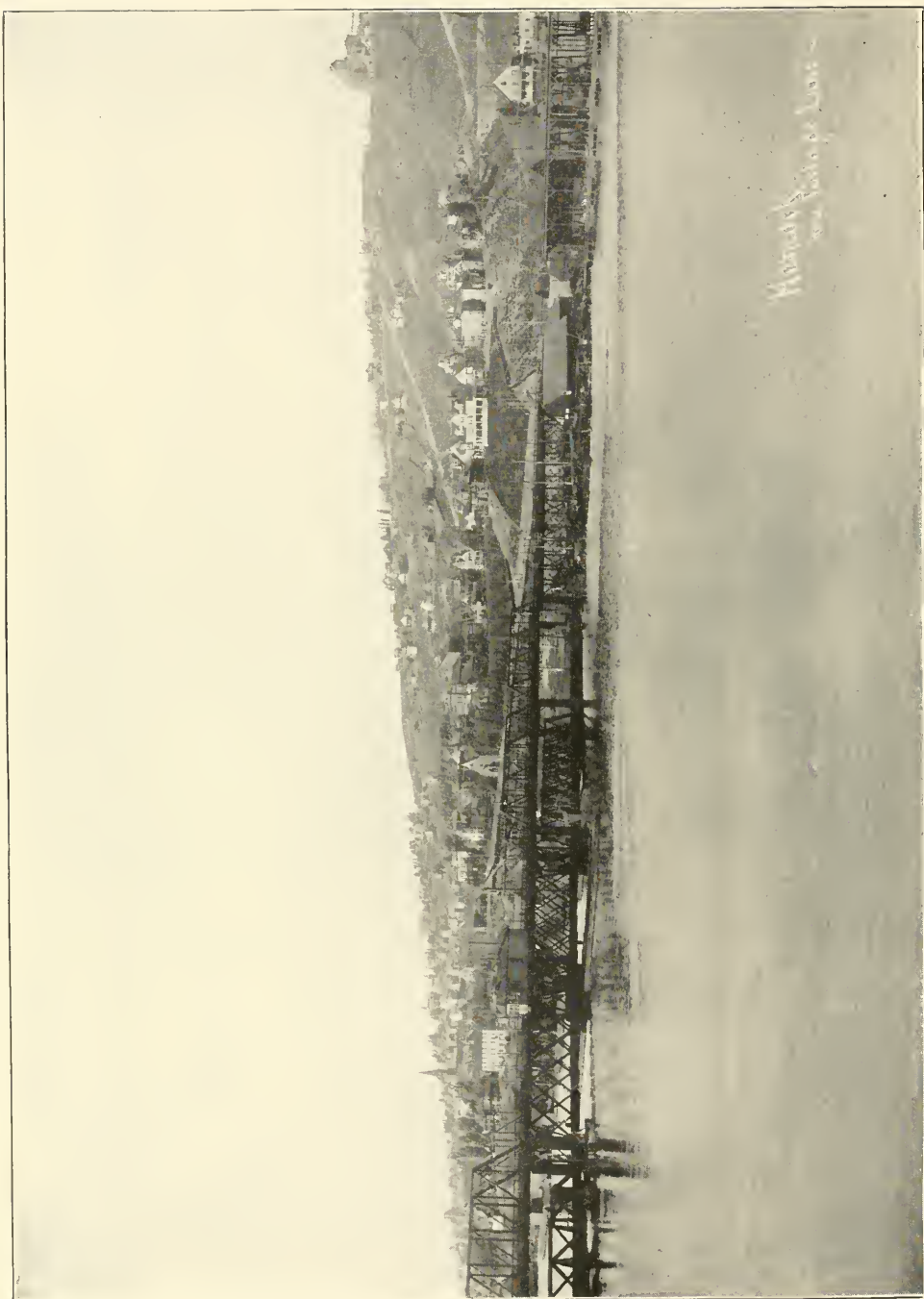


A. Hays Besant Co.
Houston.

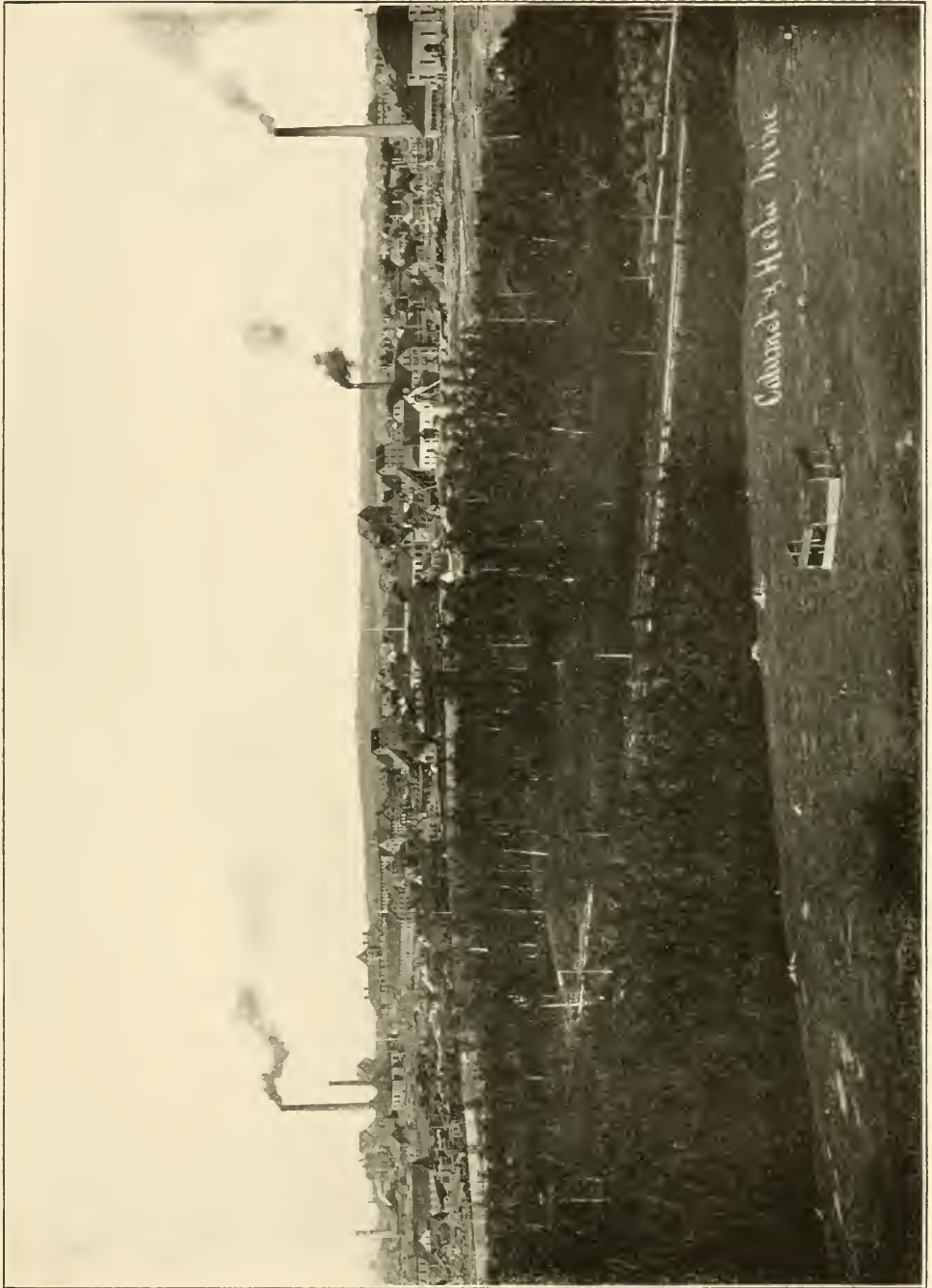


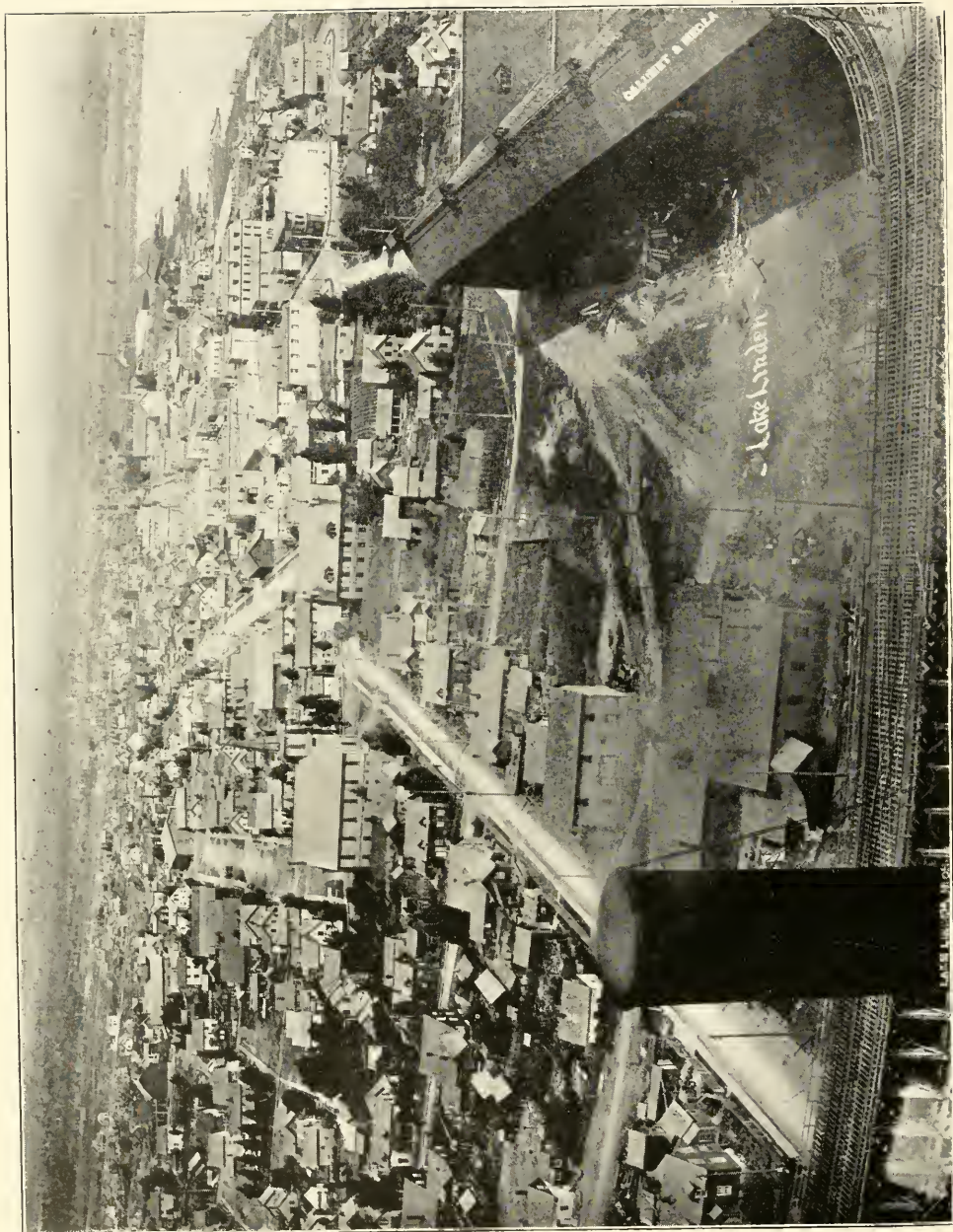
NATIONAL BANK OF HOUGHTON -



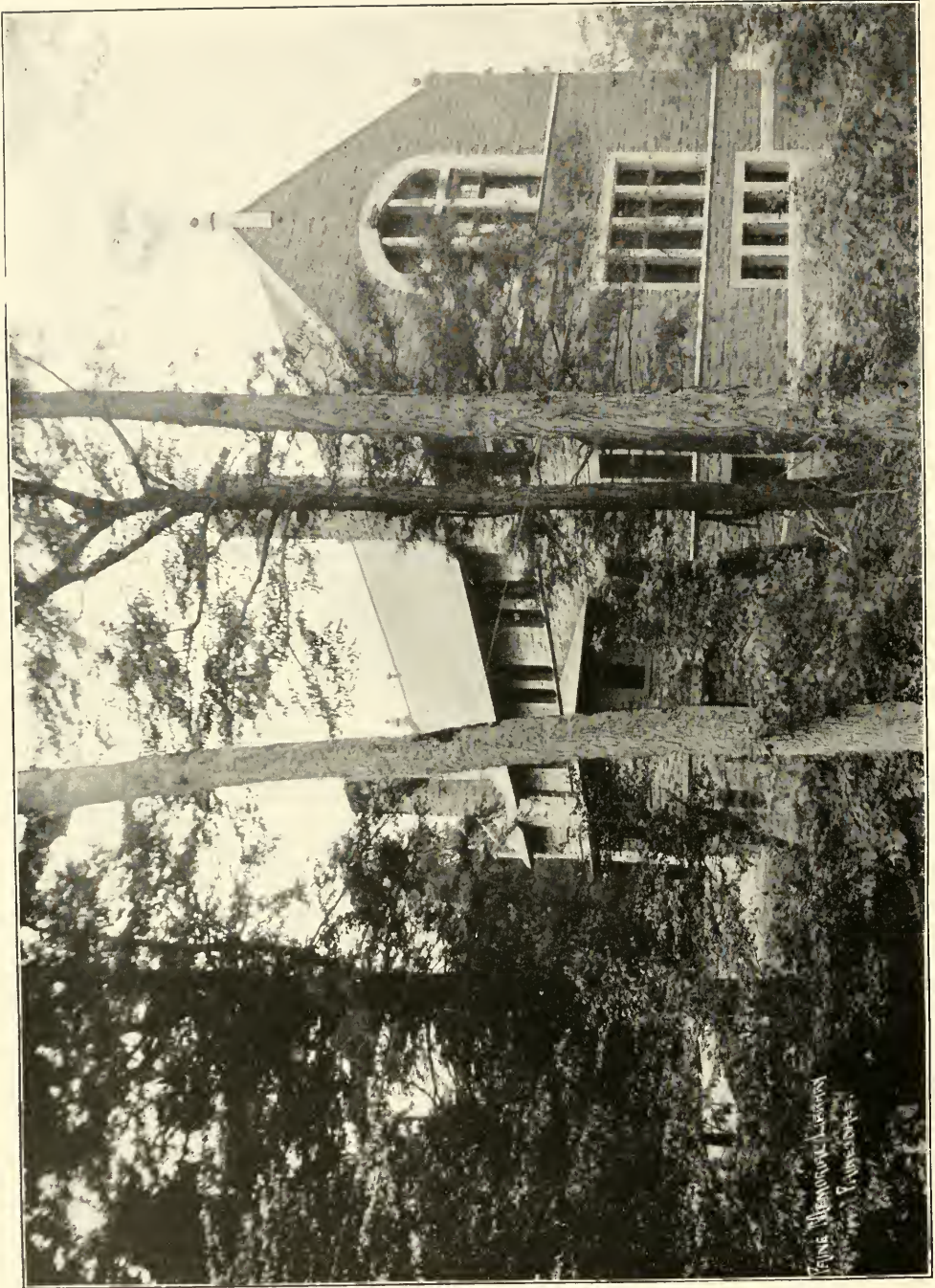


Wichita Falls, Texas



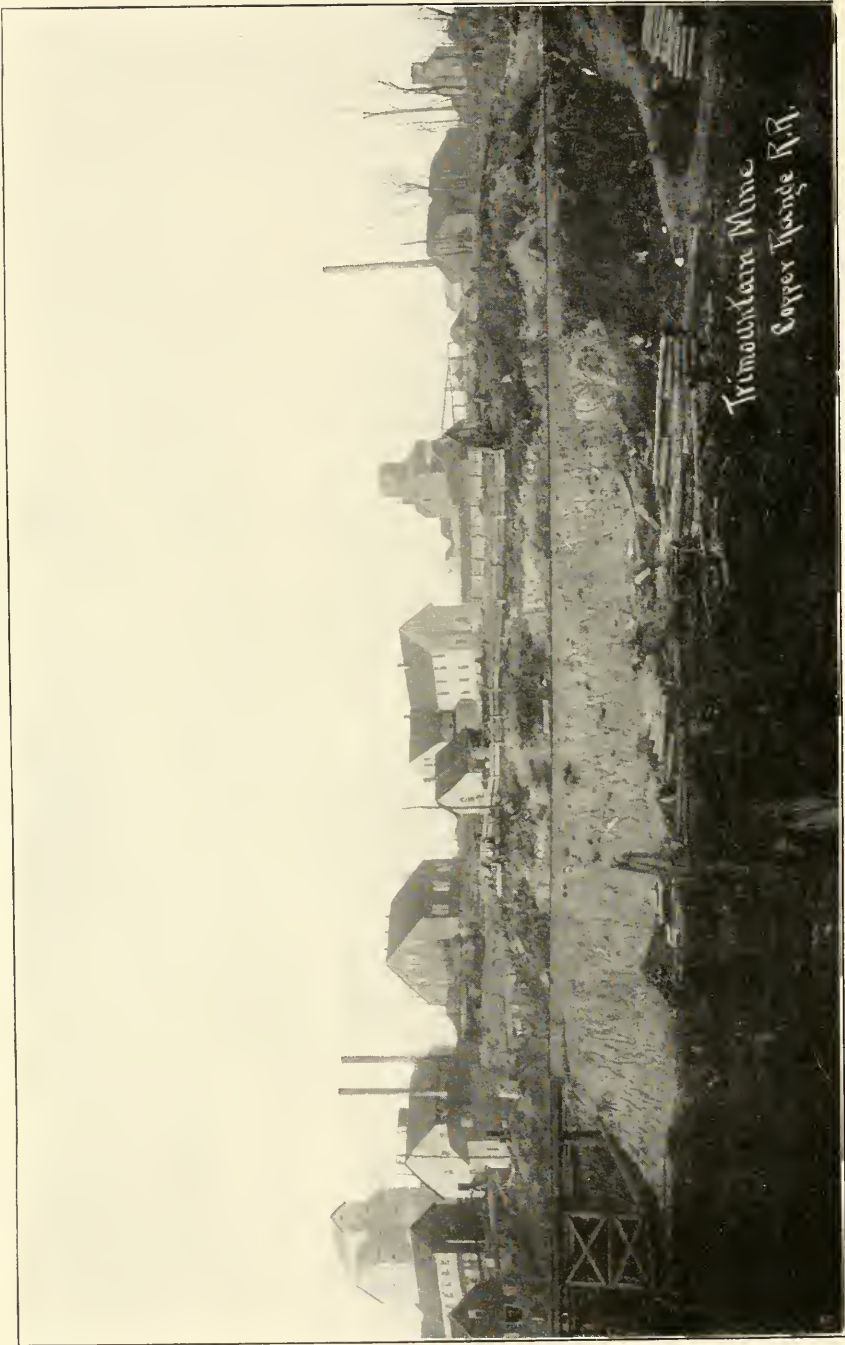






FINE MEMORIAL LIBRARY
BY THE PRESIDENT

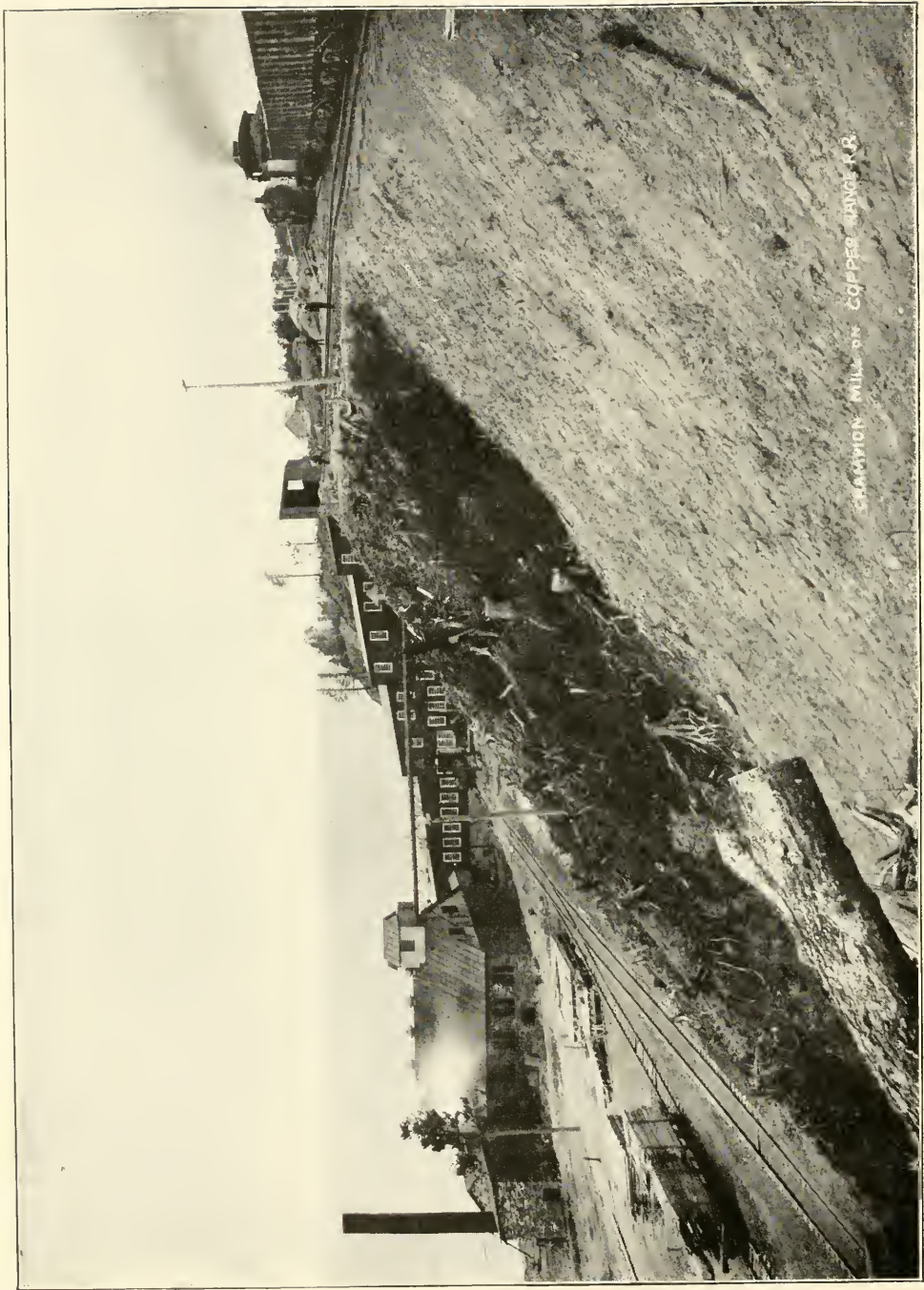




*Simonsville Mine
Copper Range R.R.*



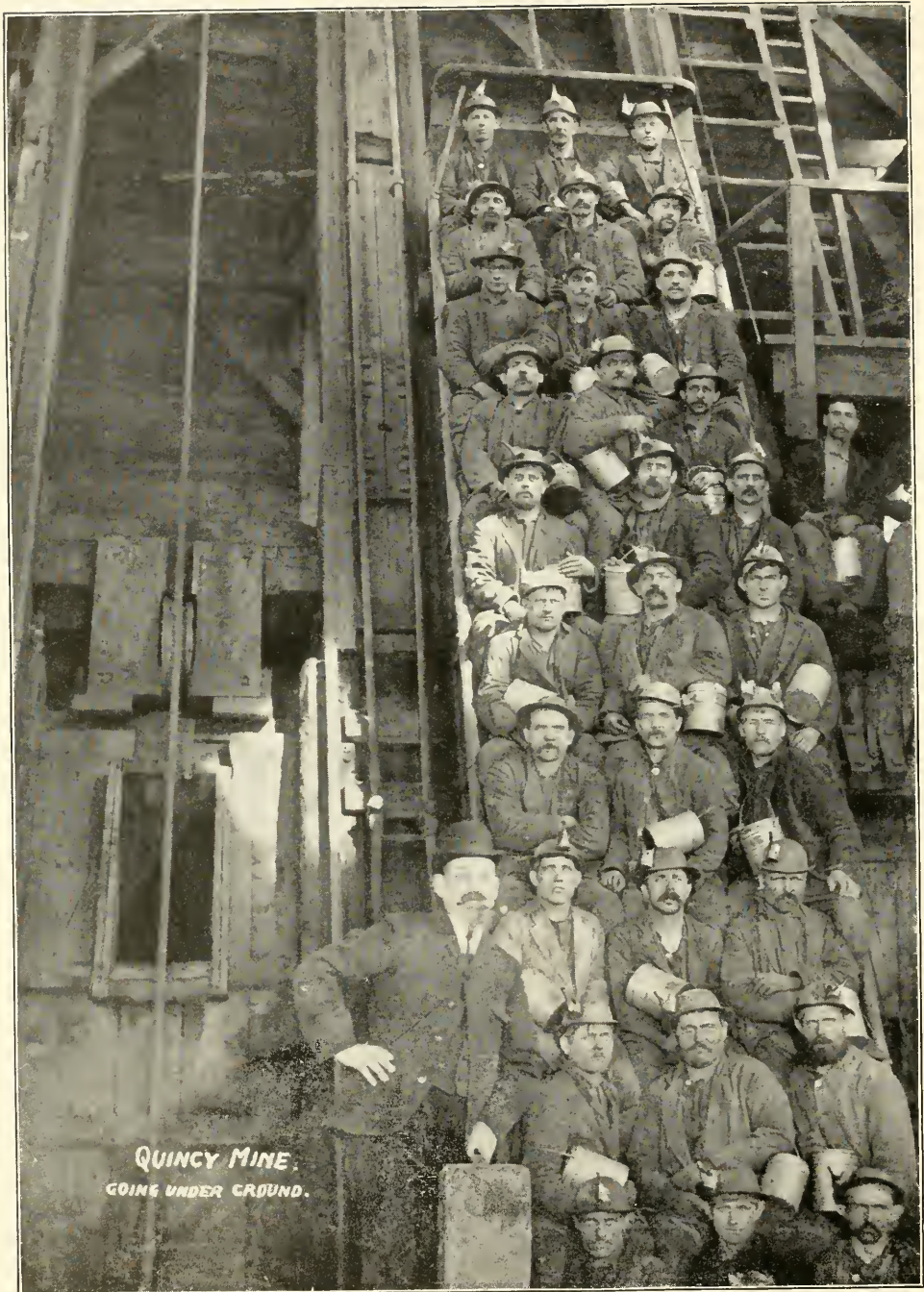
QUINCY SMELTERS HANCOCK



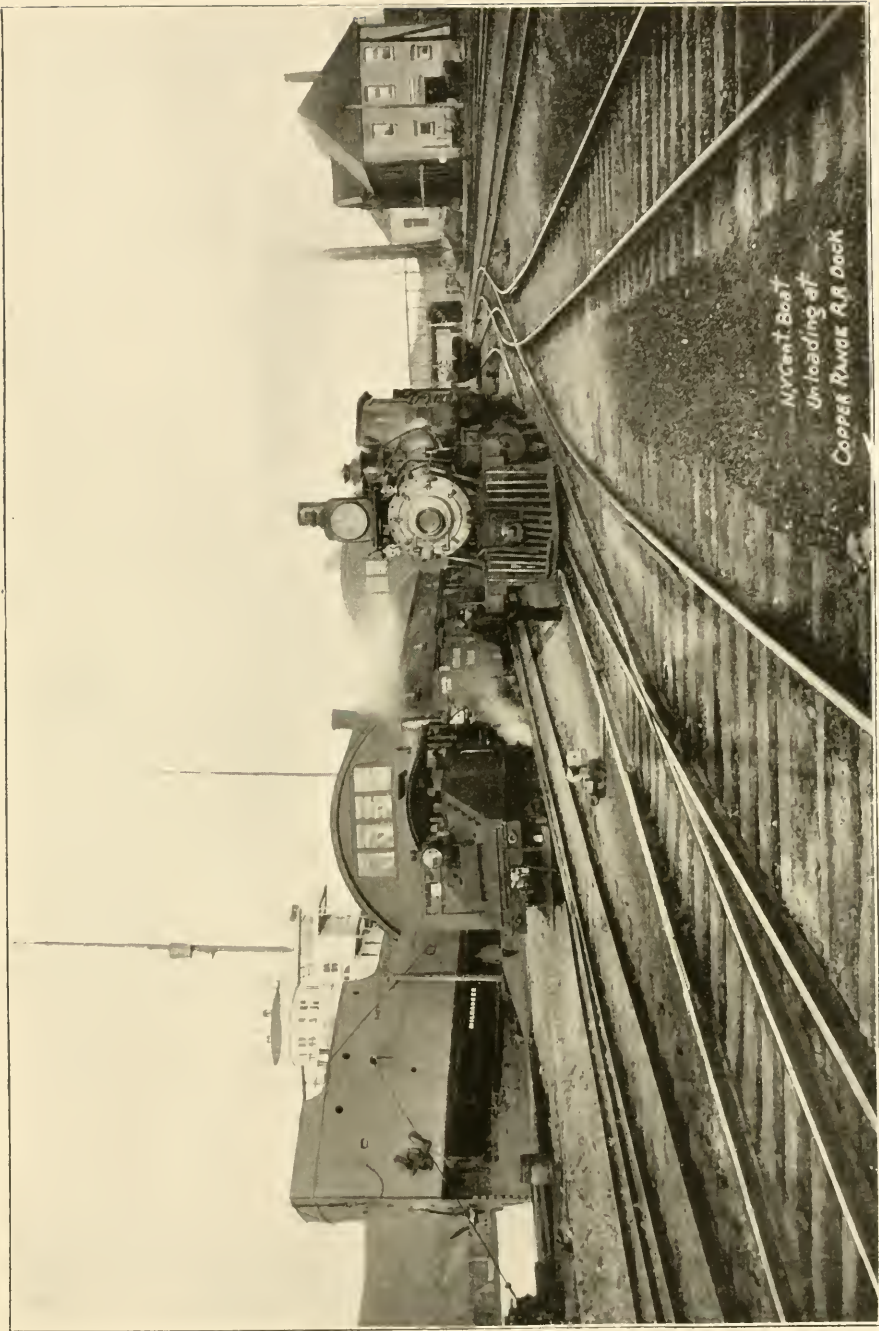
STATION MILLS ON COPPER RIVER, A.B.

STUDENTS N.C.M.
JACKSONVILLE, FLORIDA.





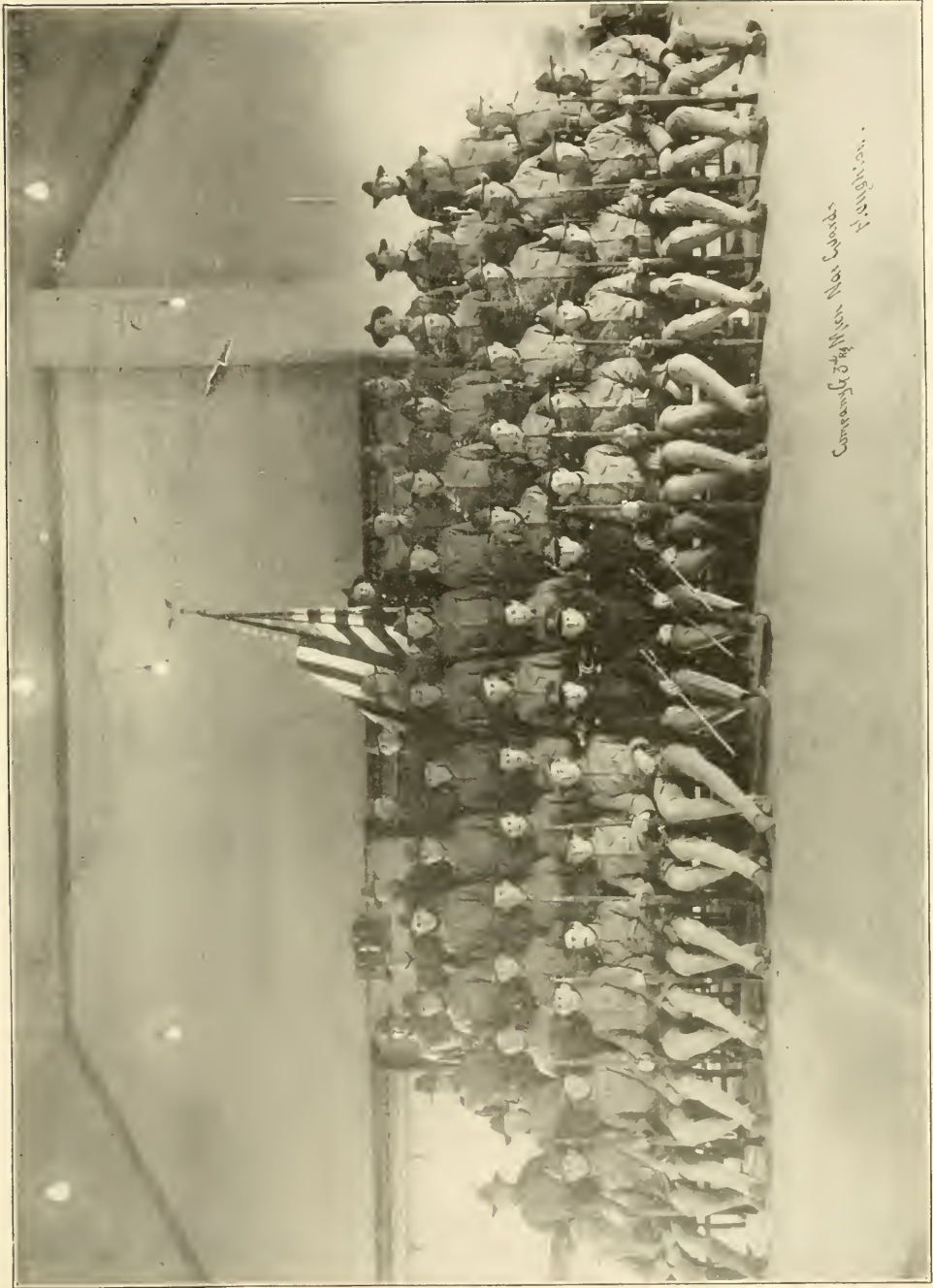
QUINCY MINE.
GOING UNDER GROUND.



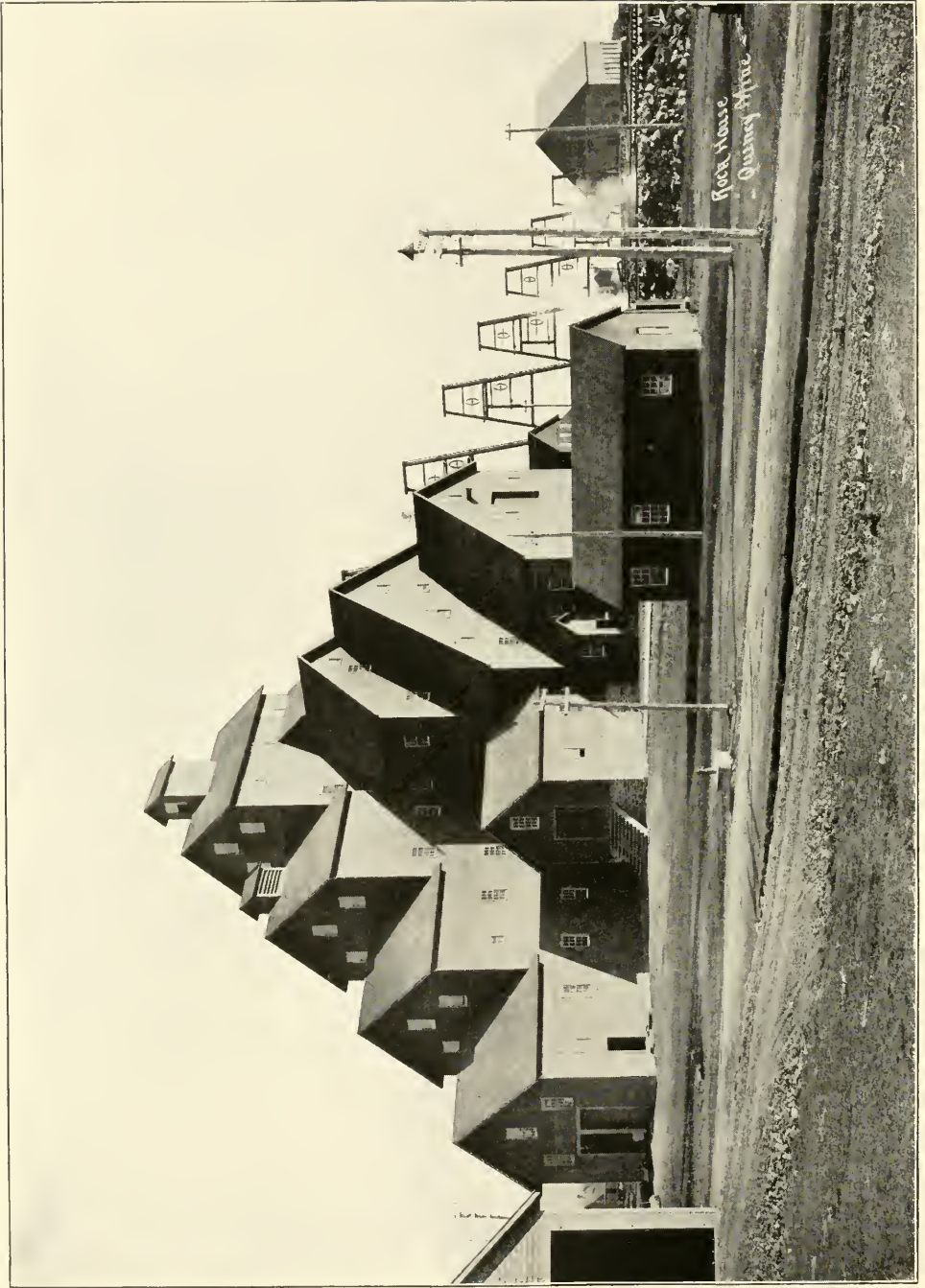
*NYCent Boat
Unloading at
Copperlands R.R. Dock*



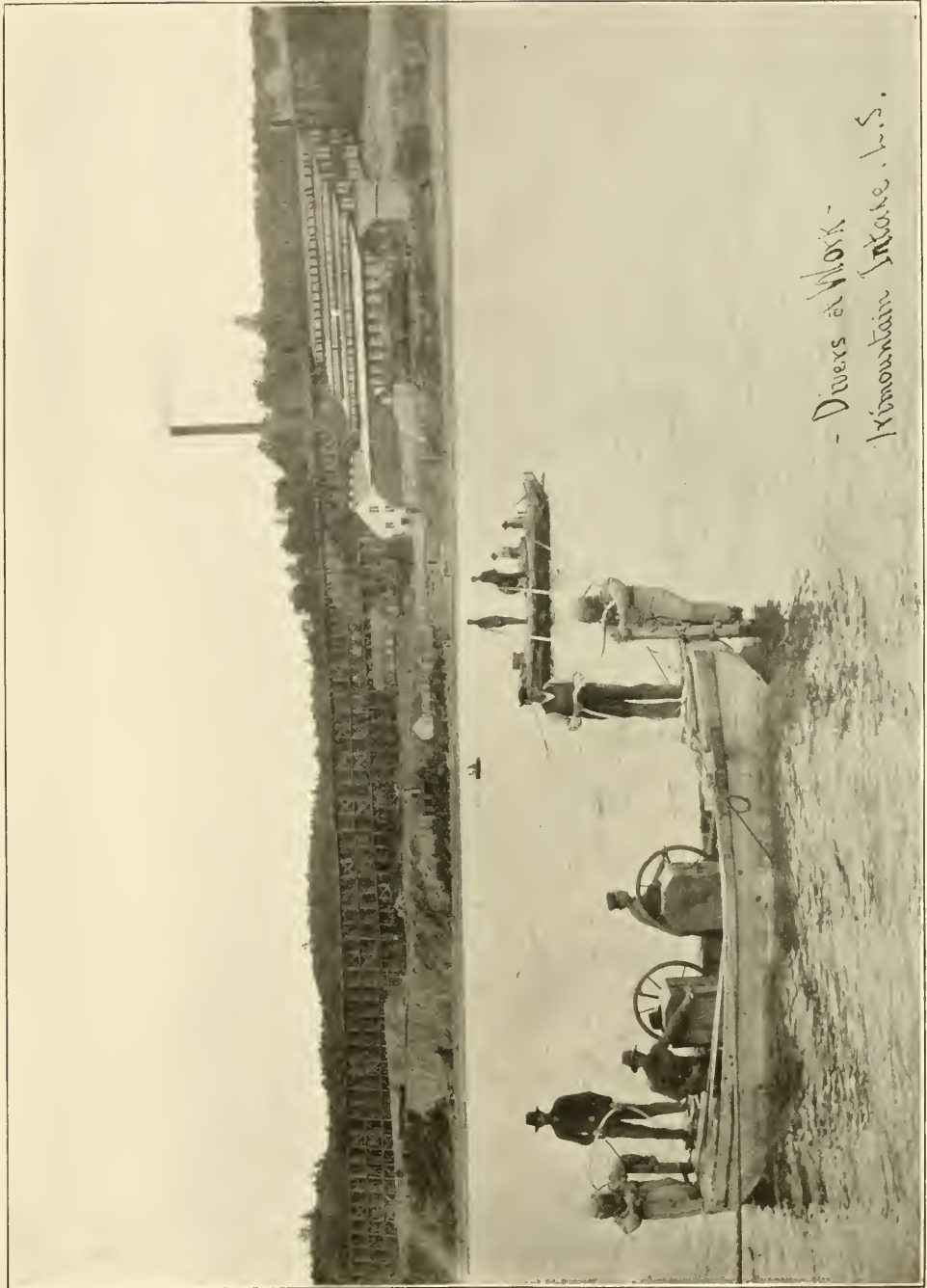
WINTER



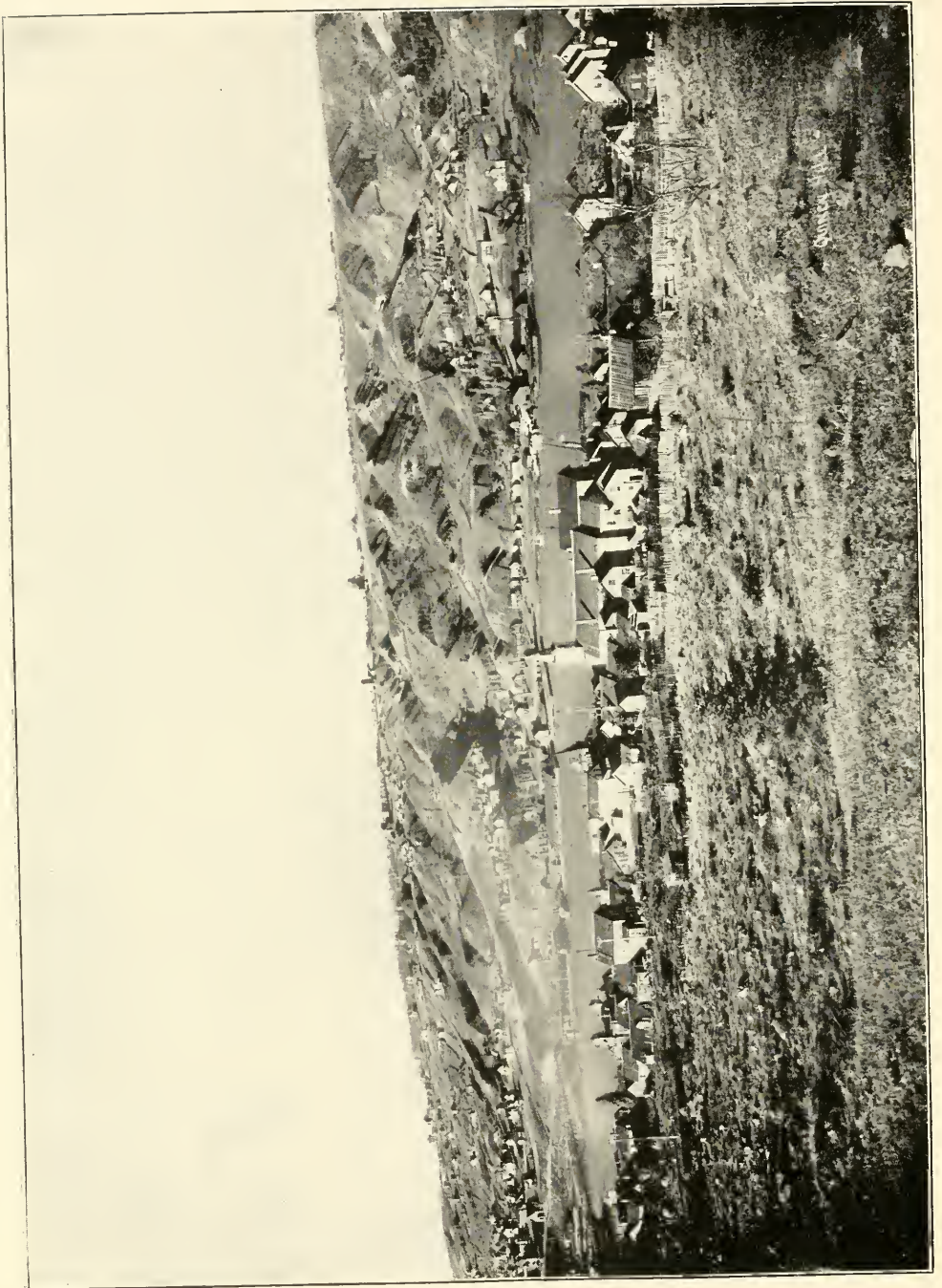
Company of 1st Marine Brigade
Washington.

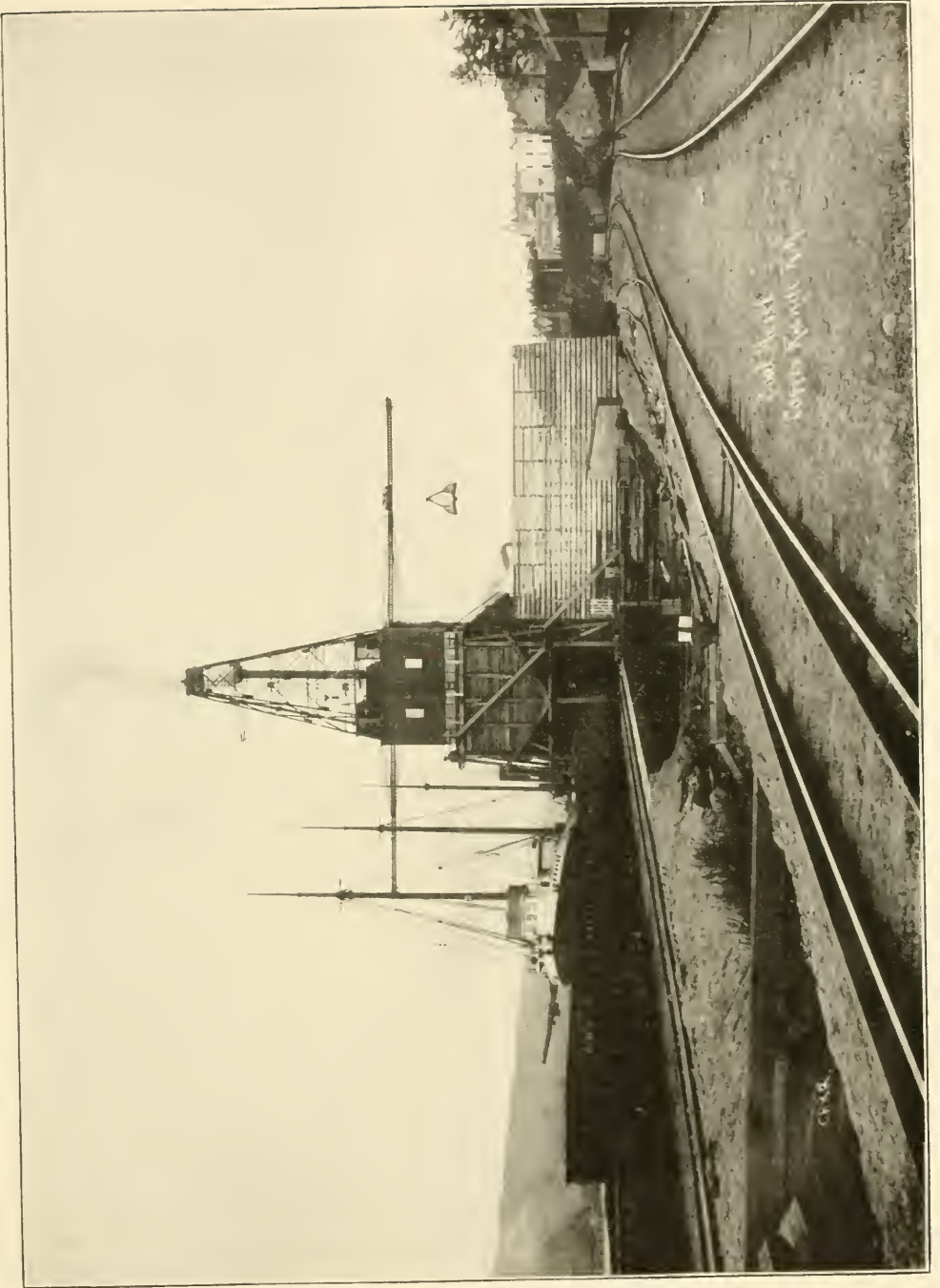


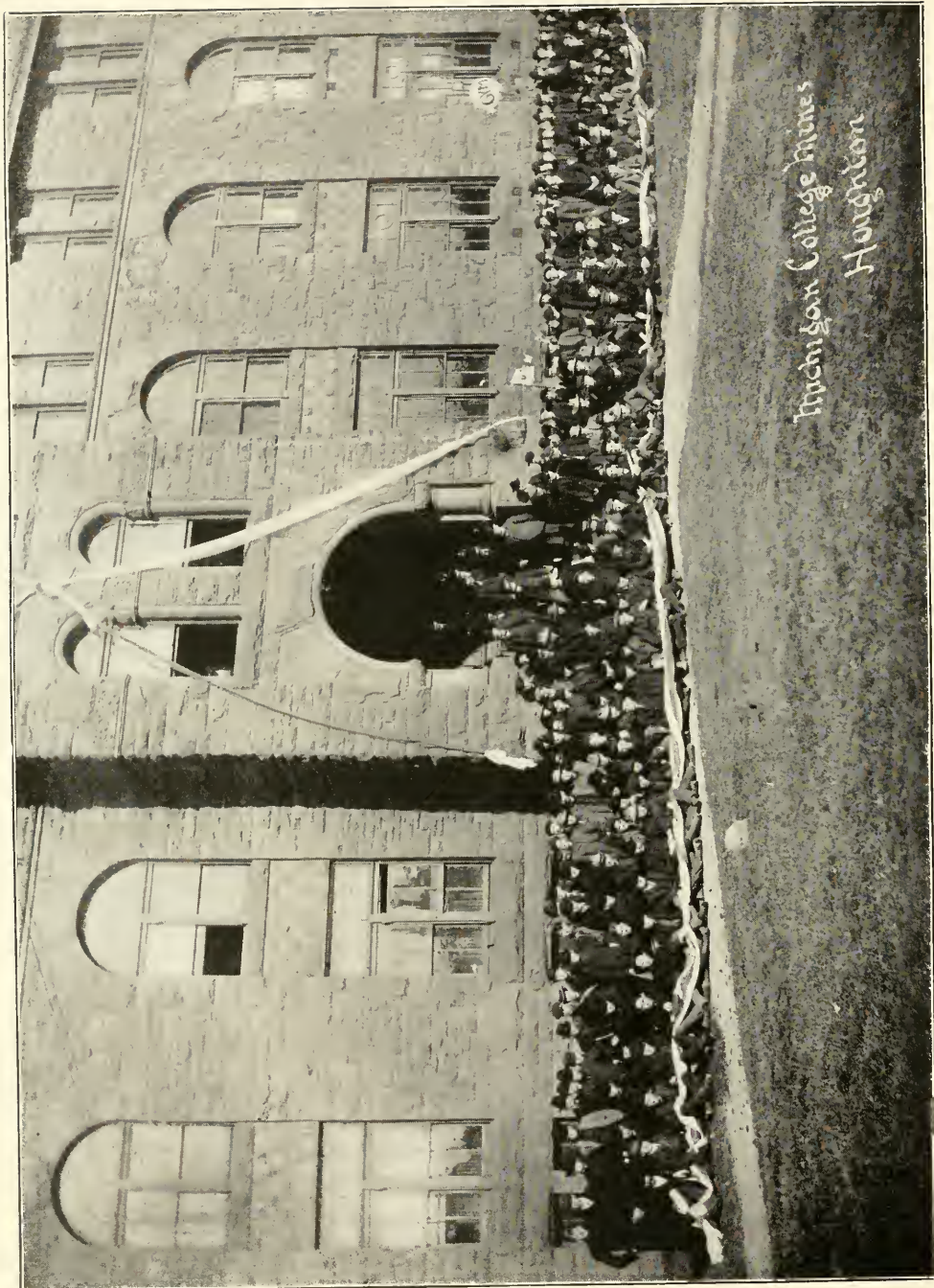
Rock house
Quarry office



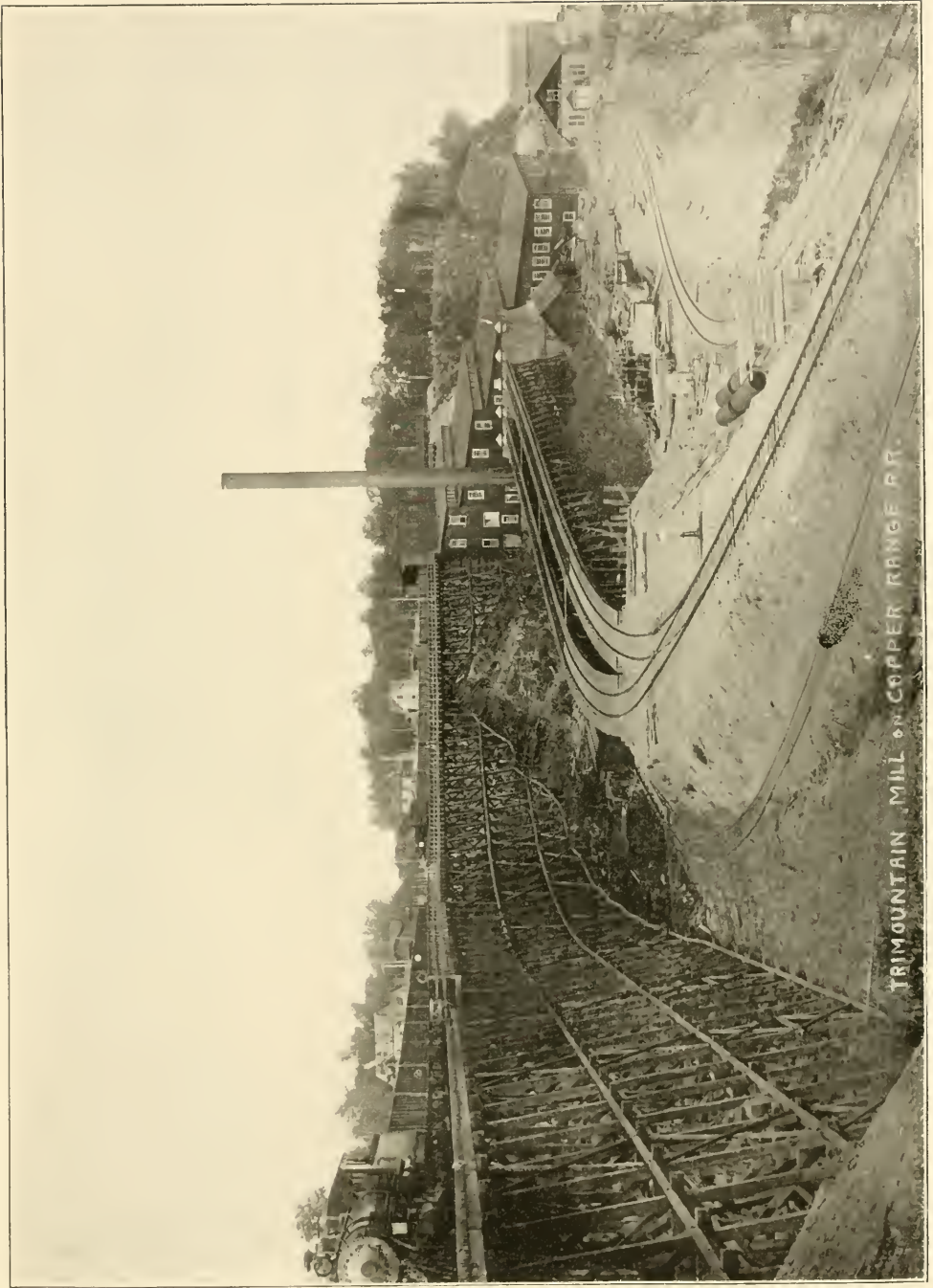
- Divers at Work -
Hiram Mountain Intake, N.S.



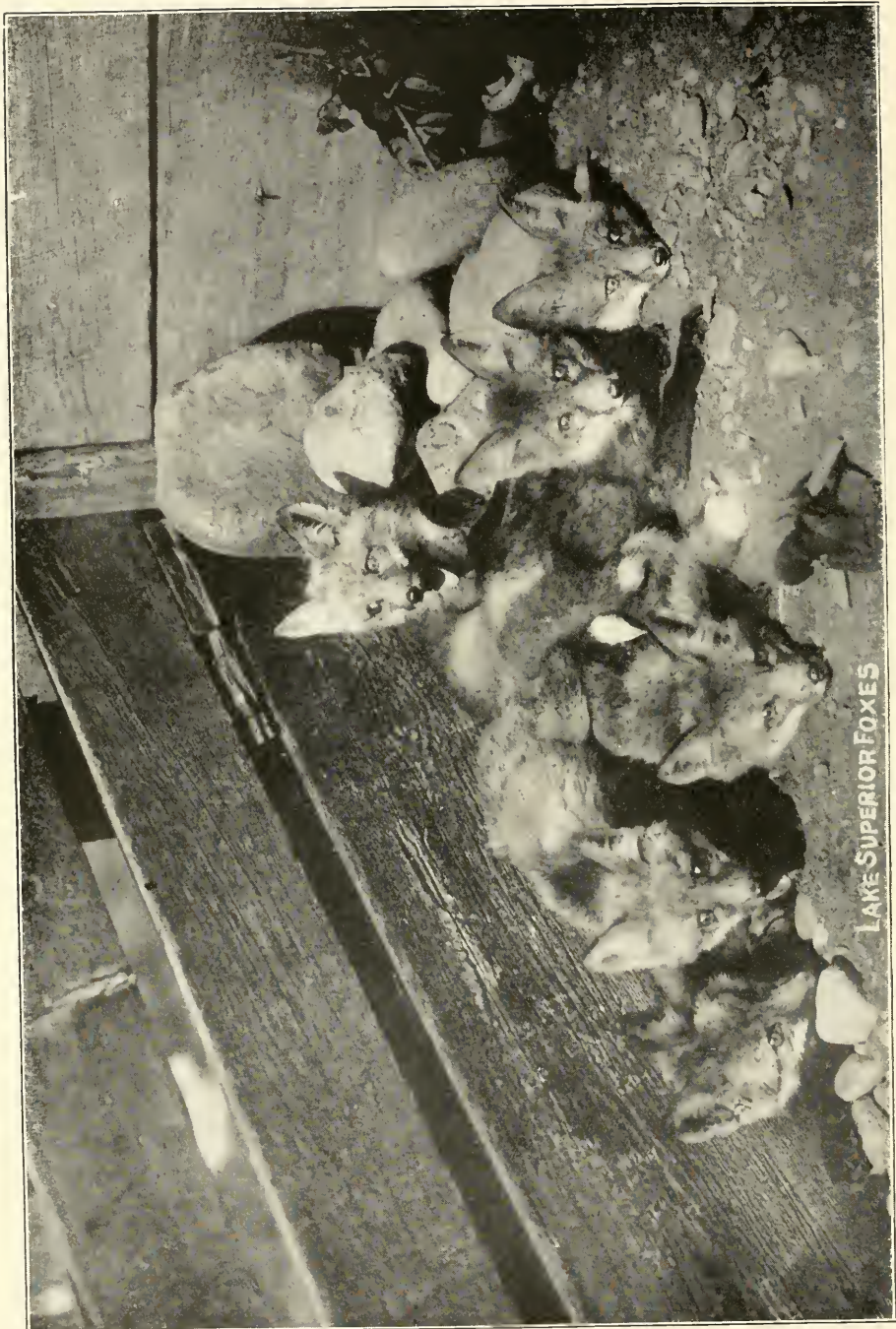




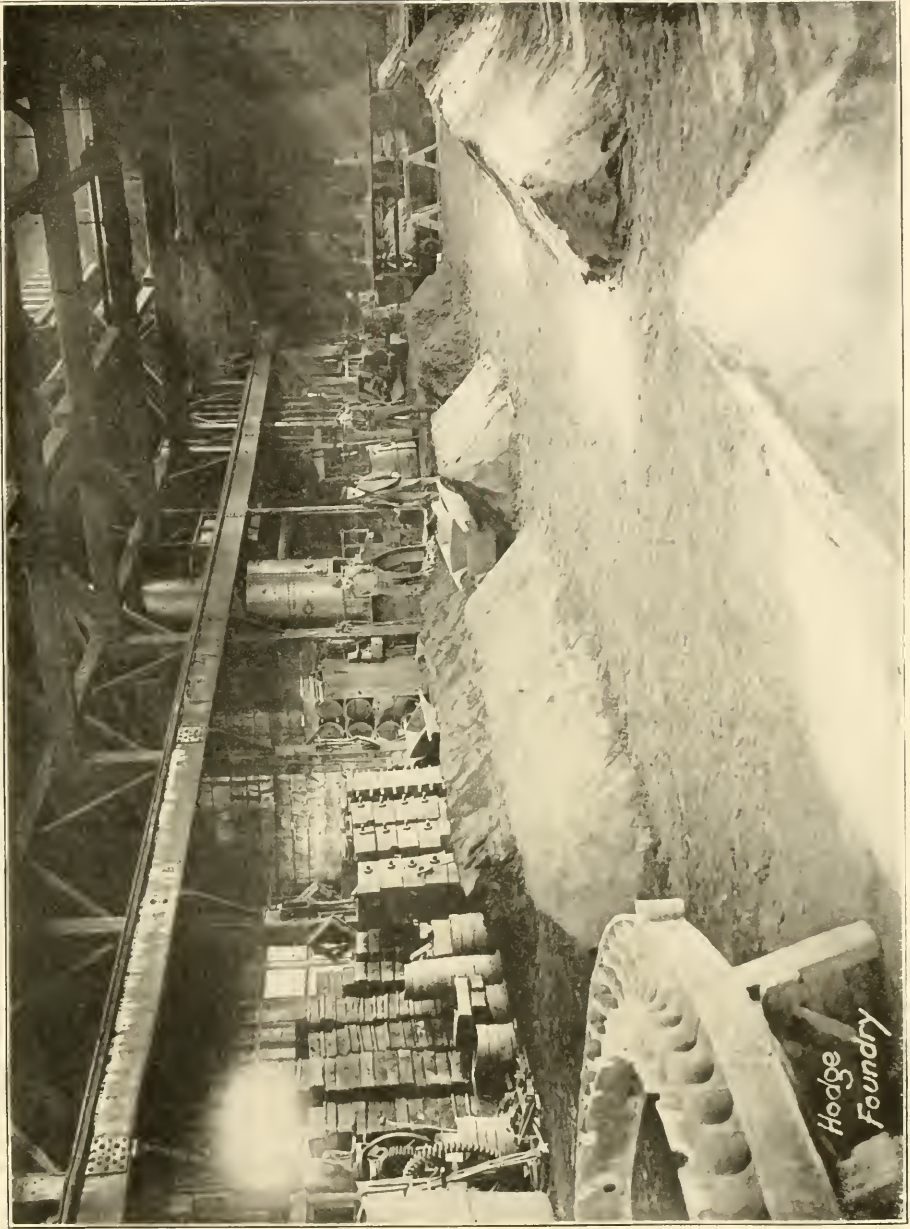
Michigan College Mines
Houghton



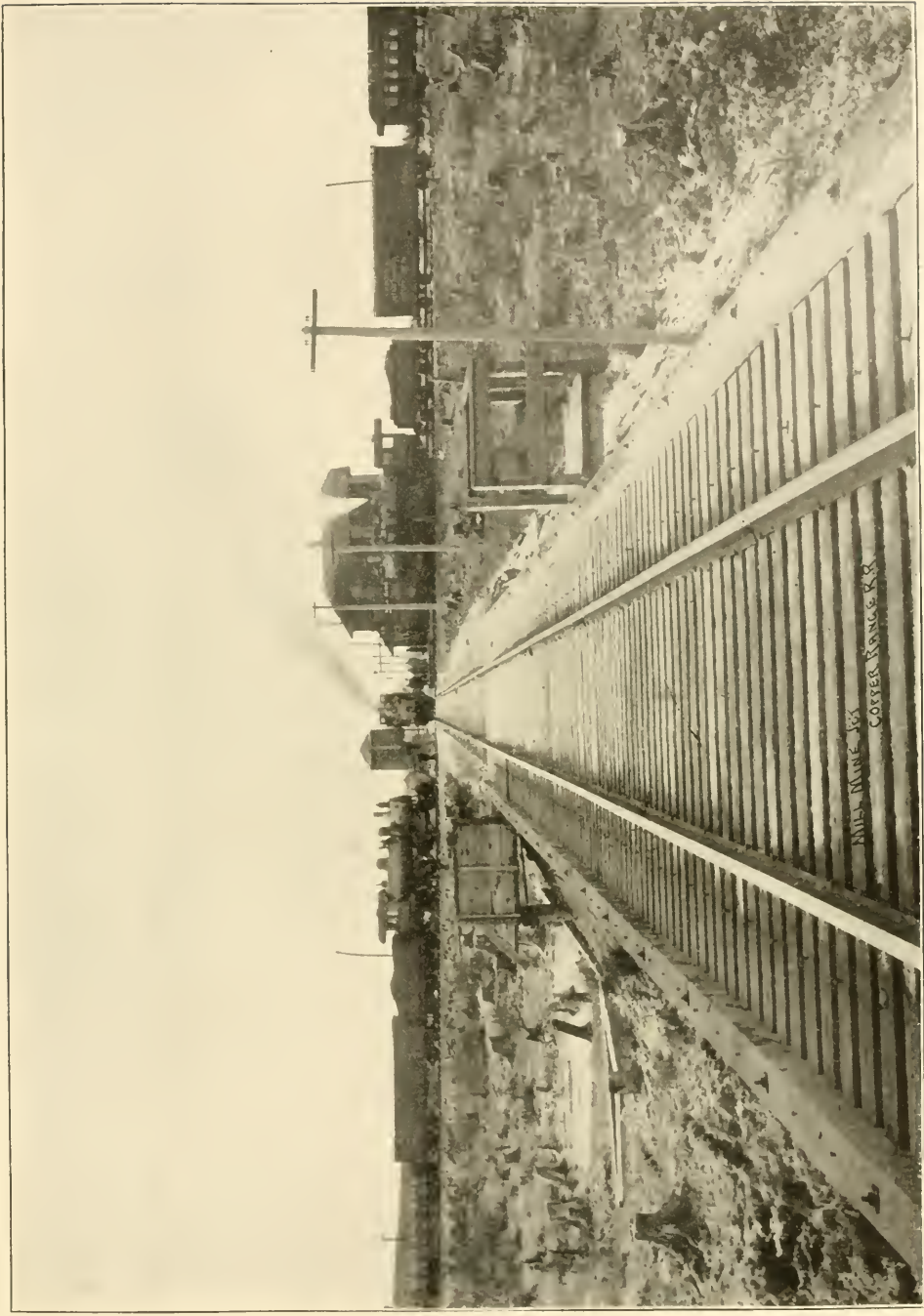
TRIMOUNTAIN MILL IN COPPER RANGE, PA.



LAKE SUPERIOR FOXES



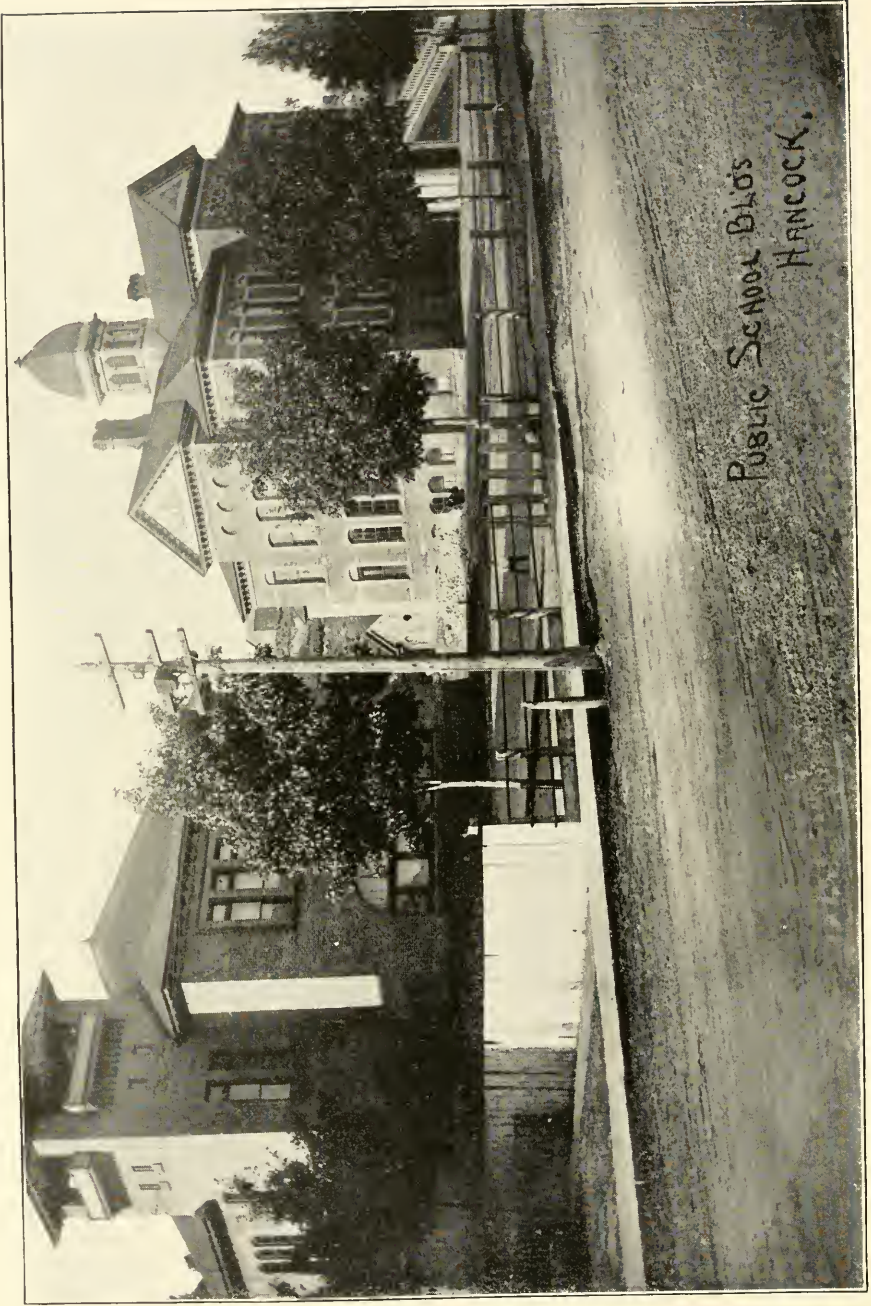








Mining Students
Underground



PUBLIC SCHOOL BUILDING
HANCOCK, MICH.





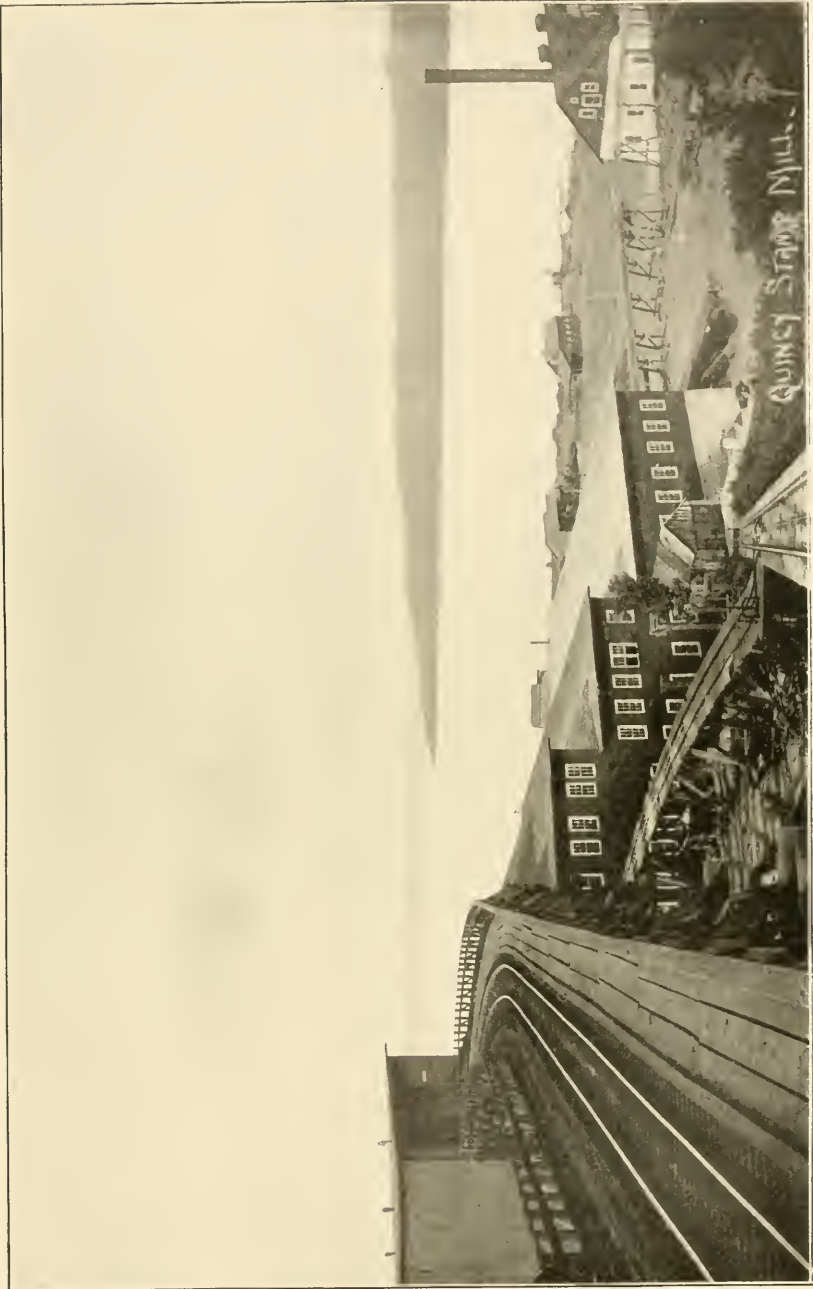
BALTIC
ON
COPPER RANGE R.R.



BAL TIC MINE
COPPER RANGE R.R.

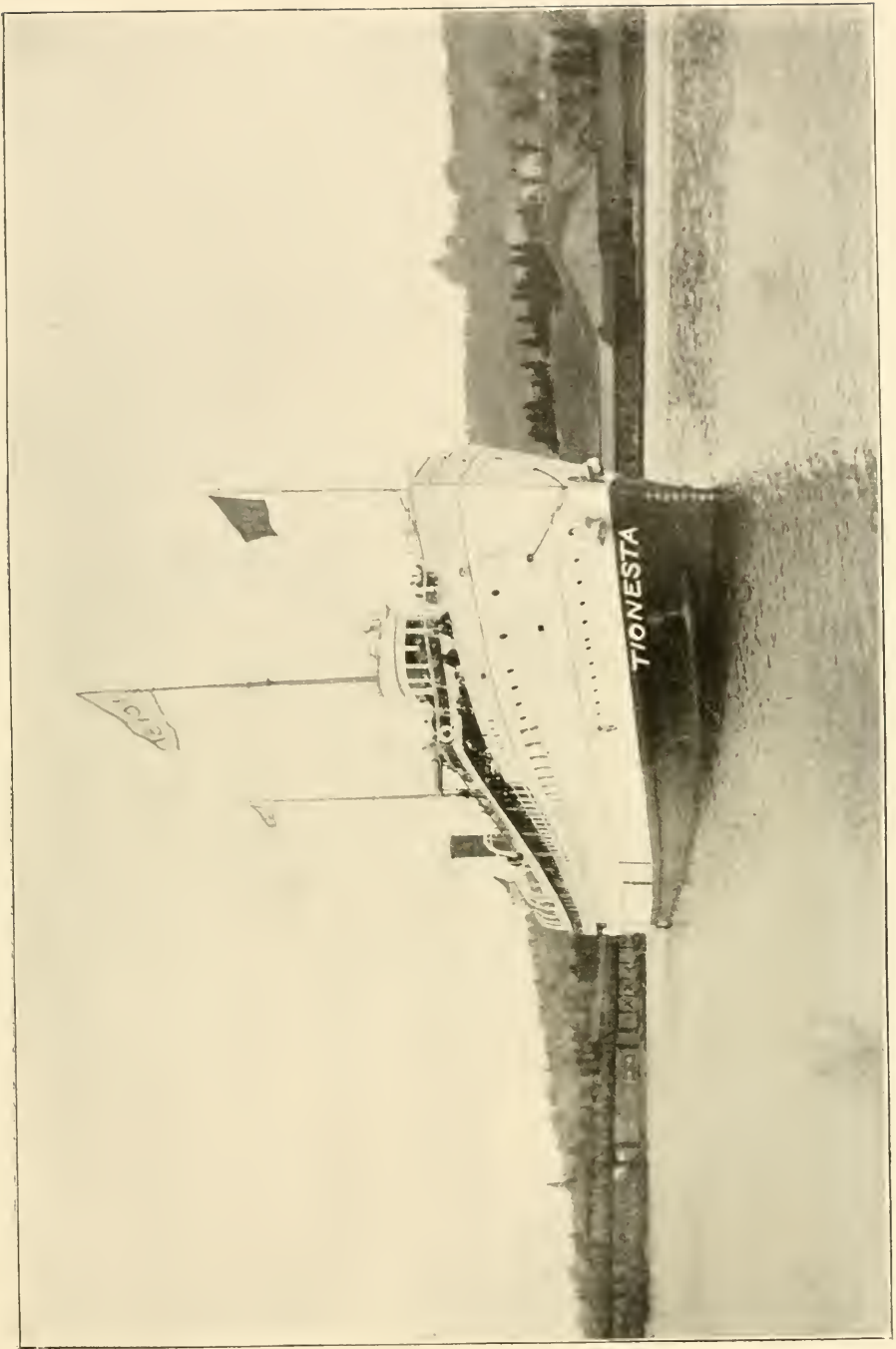


EXCURSION
Copper Range R.R.





Timbermen, Champion Mine





Kramers
Katie's home





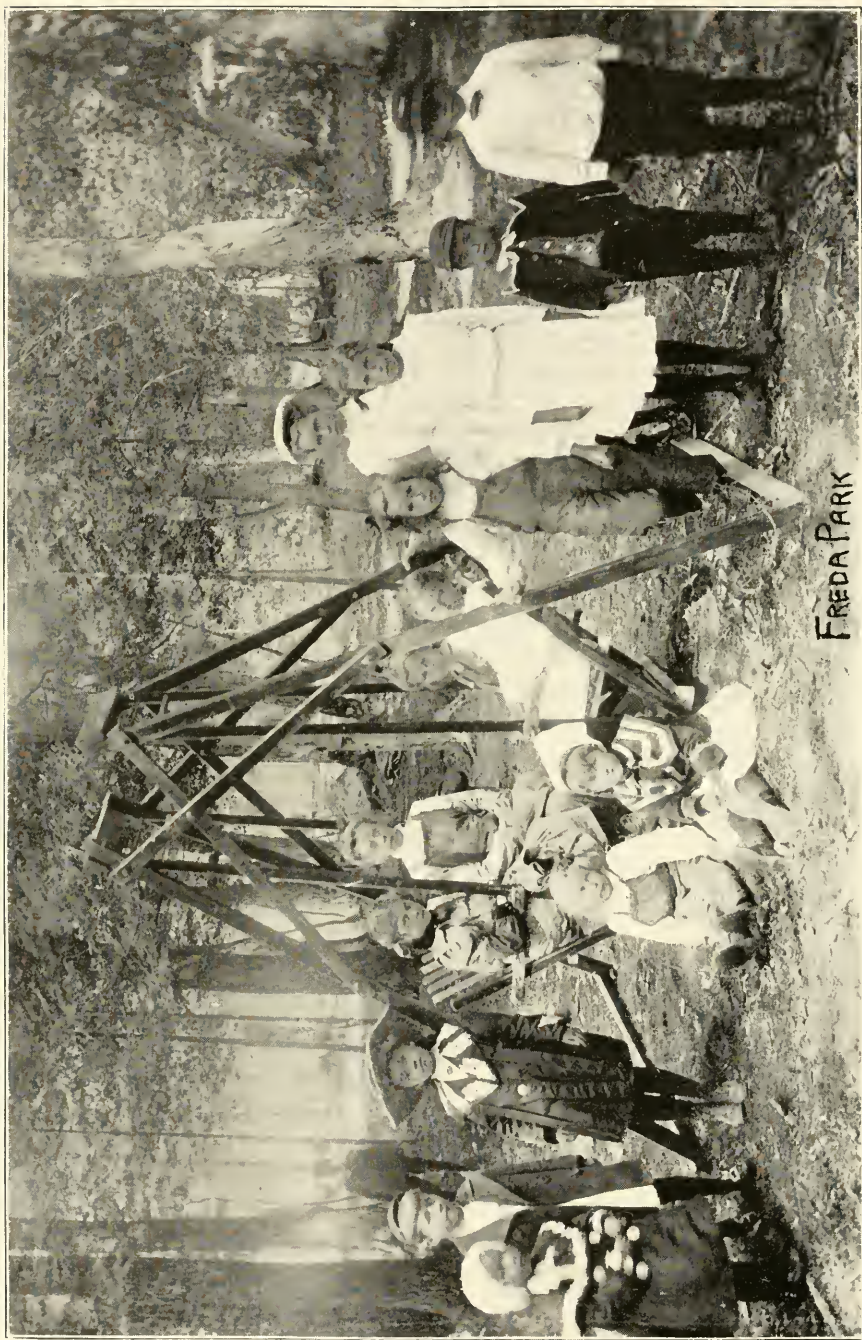
STANLEY G. WIGHT, President.

C. M. GARRISON, Sec. & Treas.

A mass of pure Copper, weighing about 6,000 lbs., was found upon the property of the Minong Mining Company situated at McCargo Cove, on Isle Royal, L. S. It was taken from an ancient mine Pit 163 feet deep, and is just as discovered, showing ancient stone hammer marks.



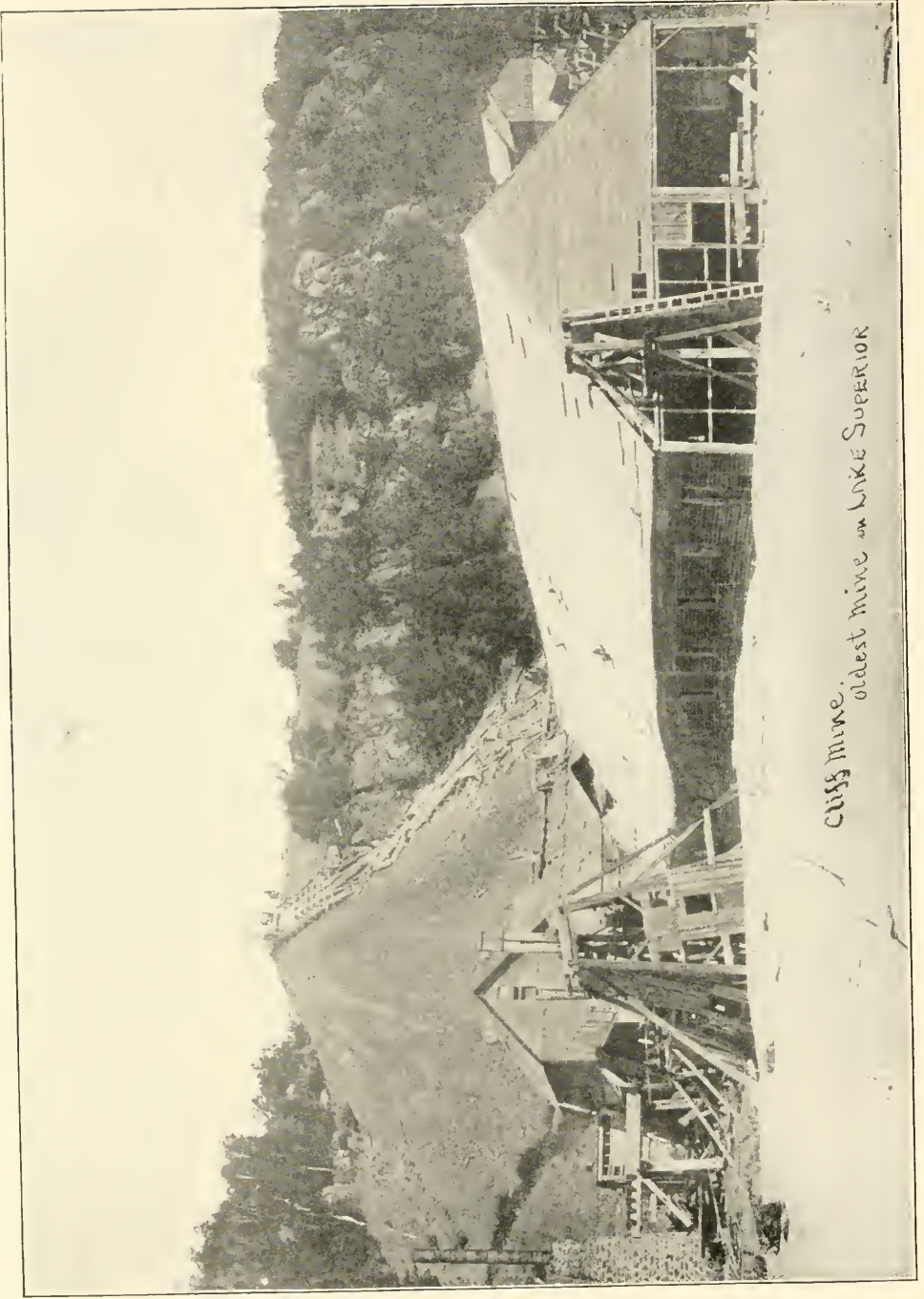
Oseebos Steam Mill



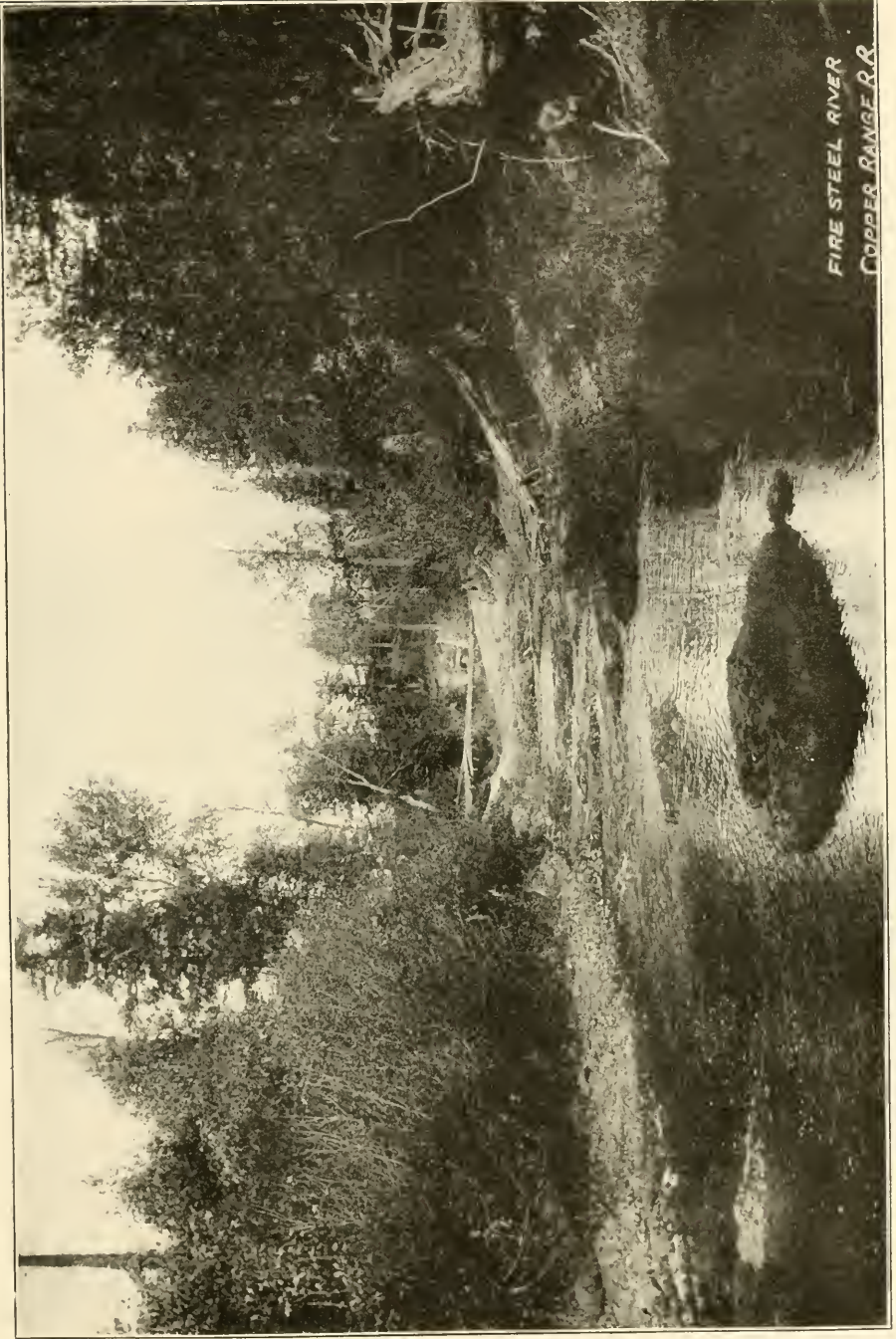
FREDA PARK



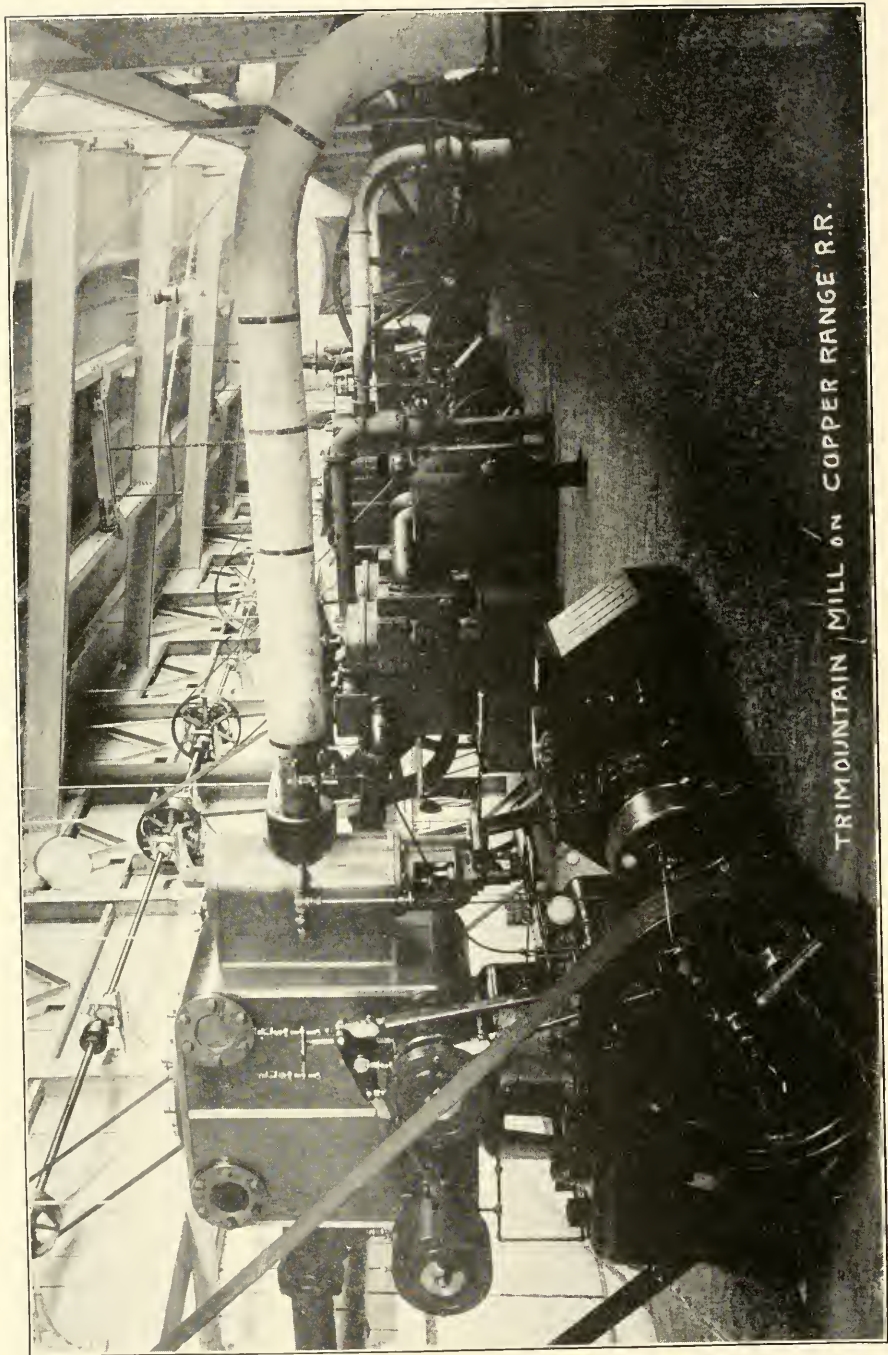
ATLANTIC MINE
ATLANTIC



Cliff Mine.
oldest mine on Lake Superior

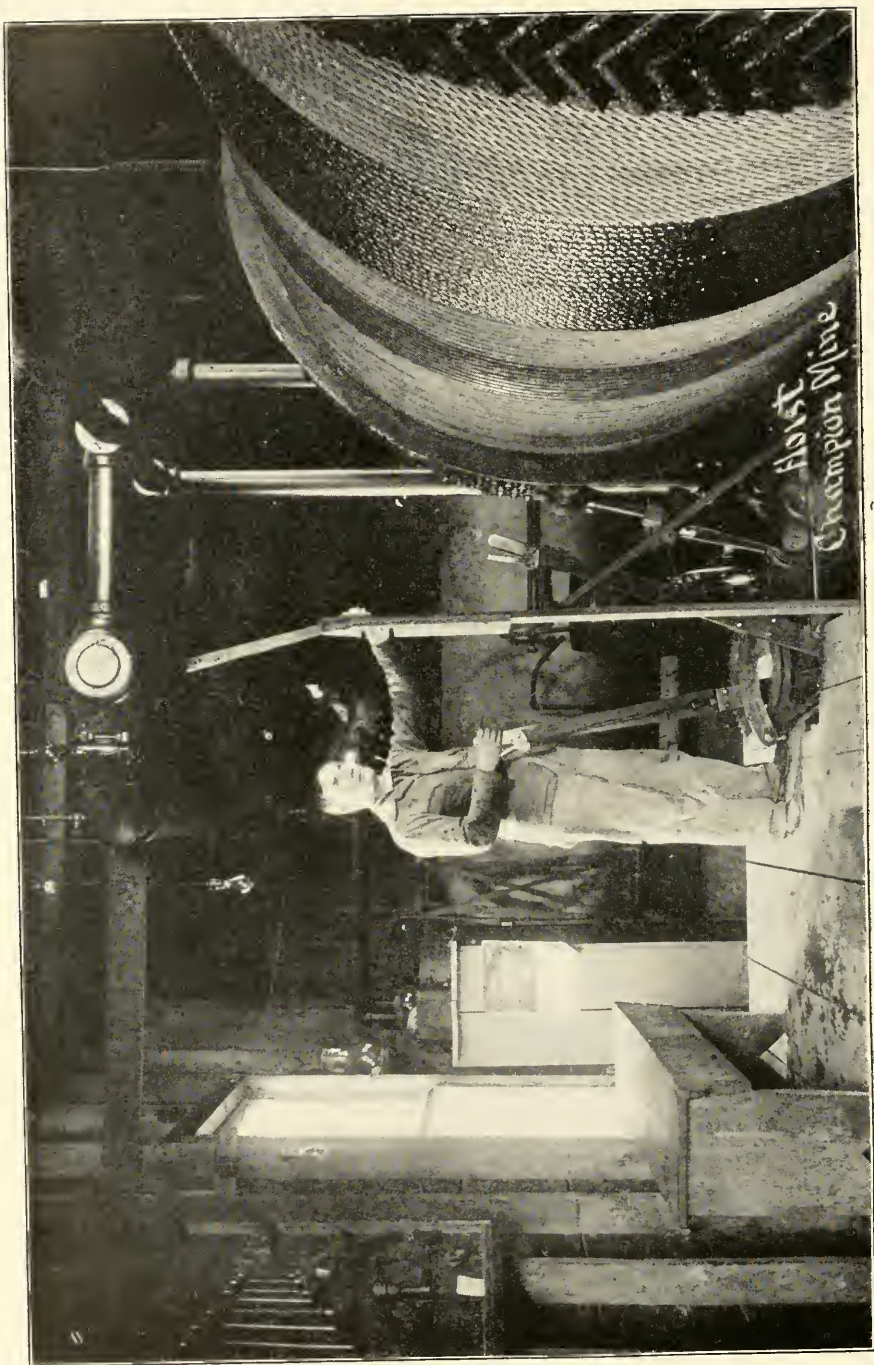


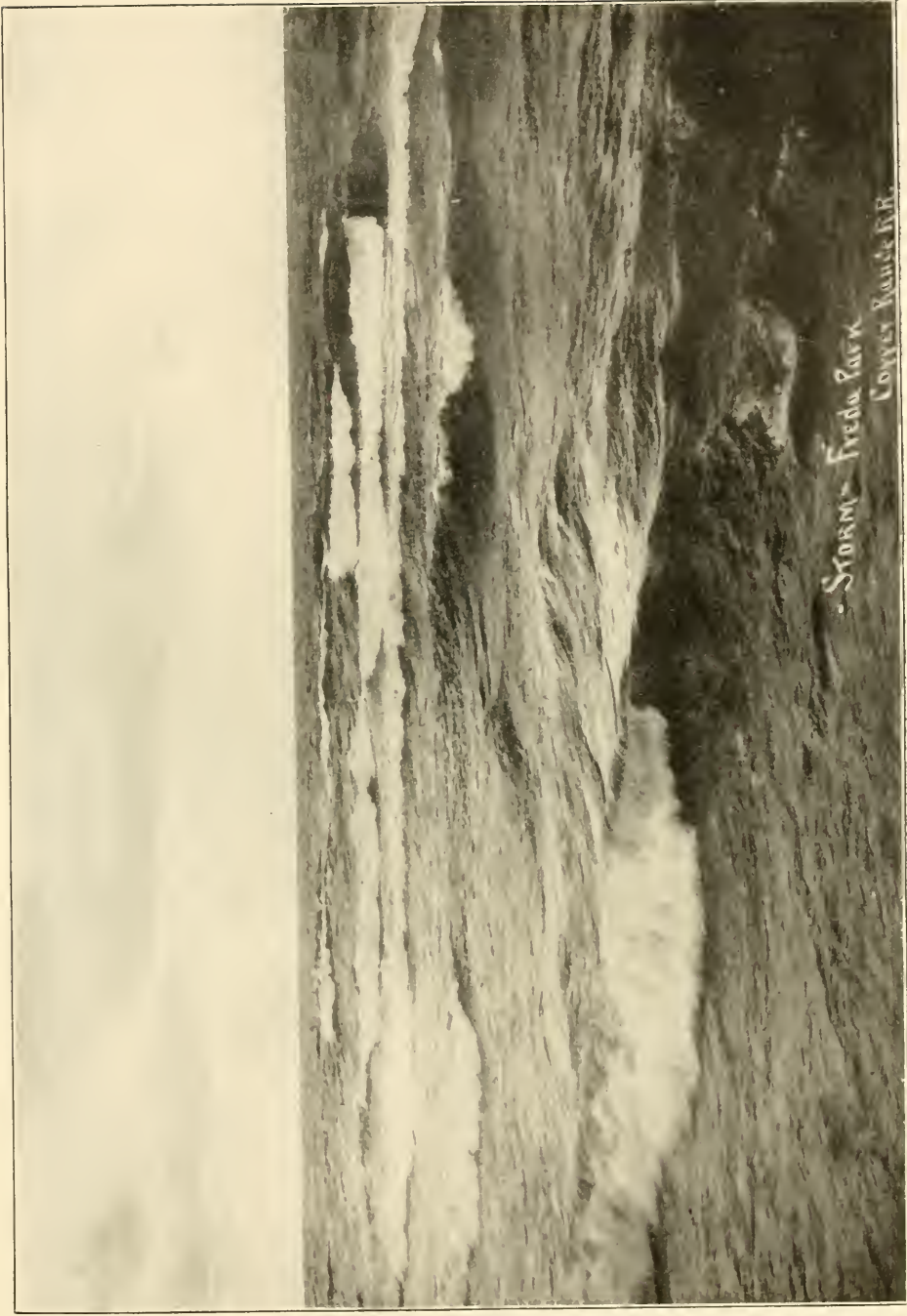
FIRE STEEL RIVER
COPPER RANGE R.R.



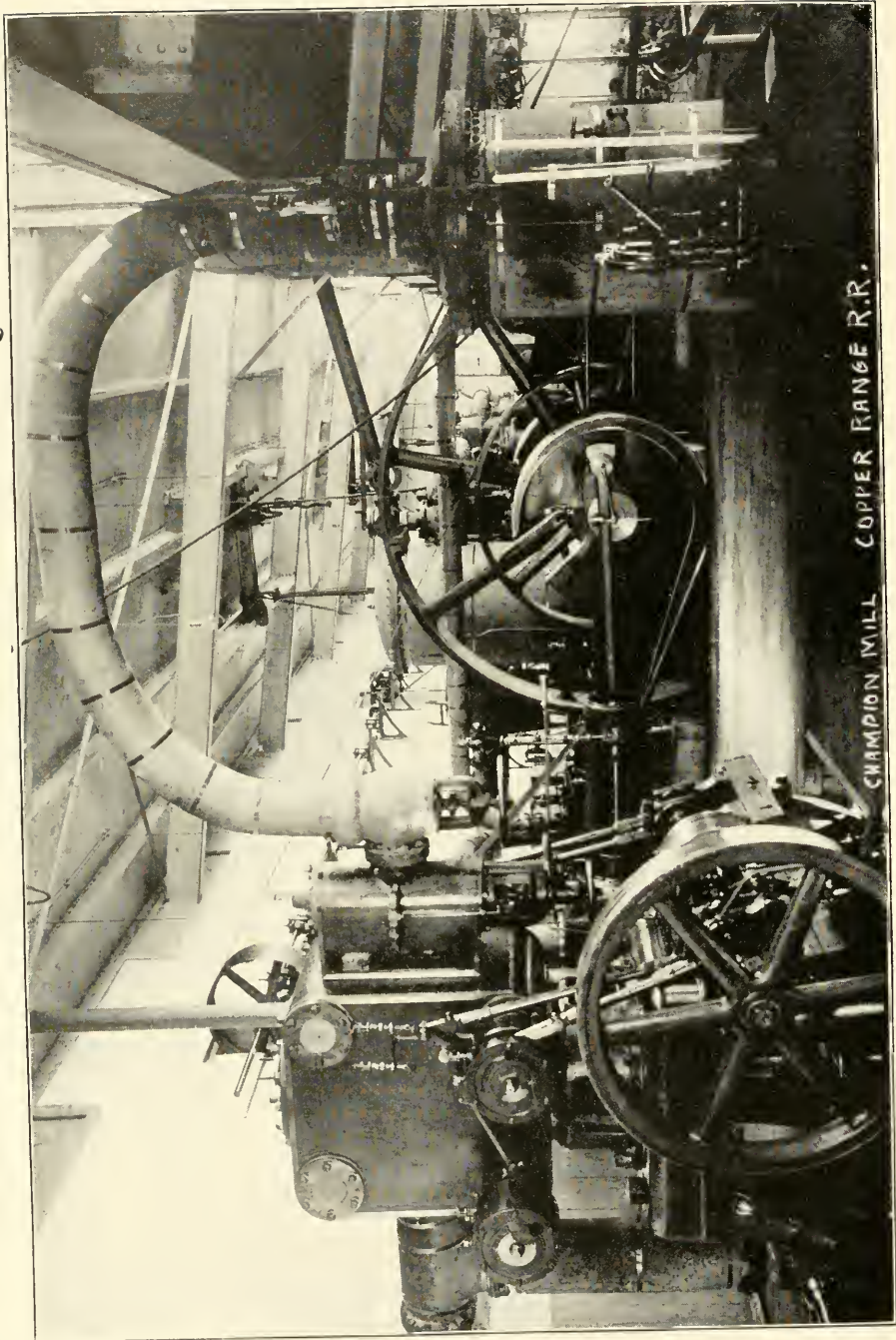
TRIMOUNTAIN MILL ON COPPER RANGE R.R.



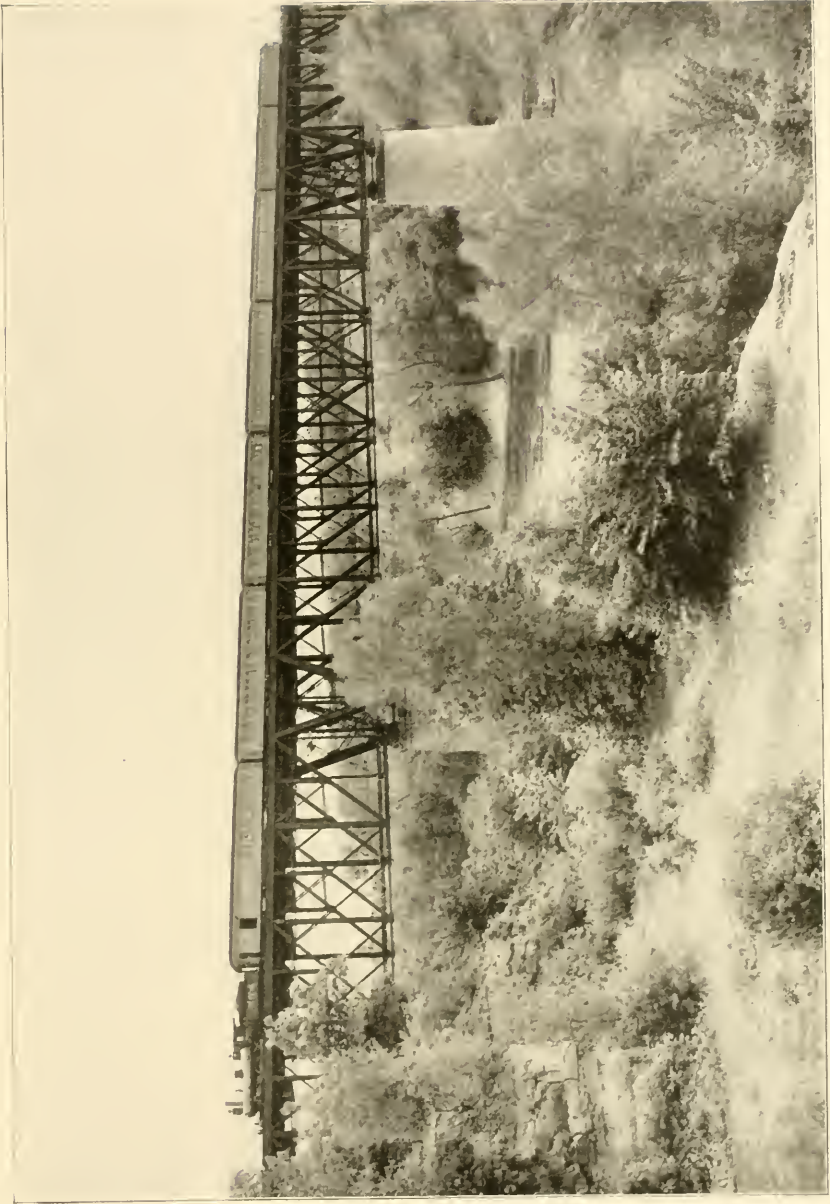




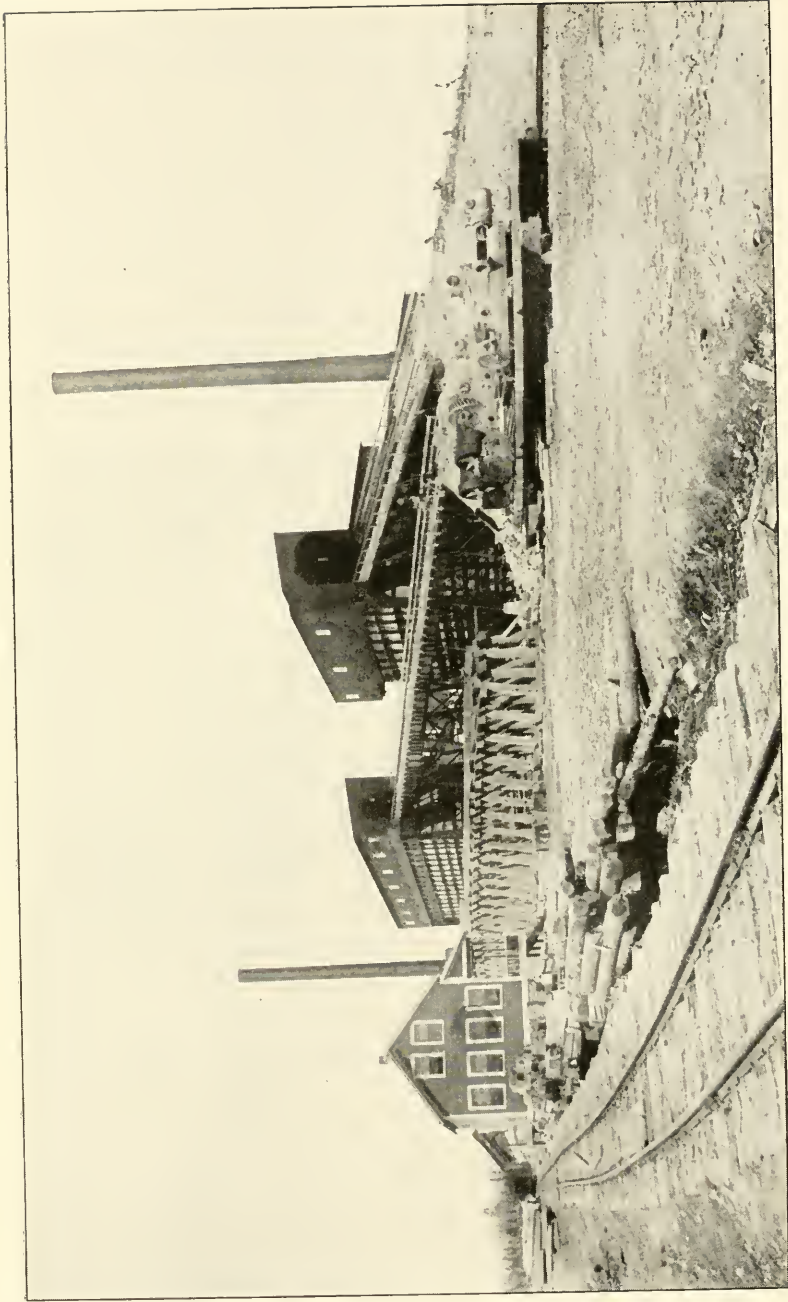
Storm - Freda Park
Copper Route R.R.



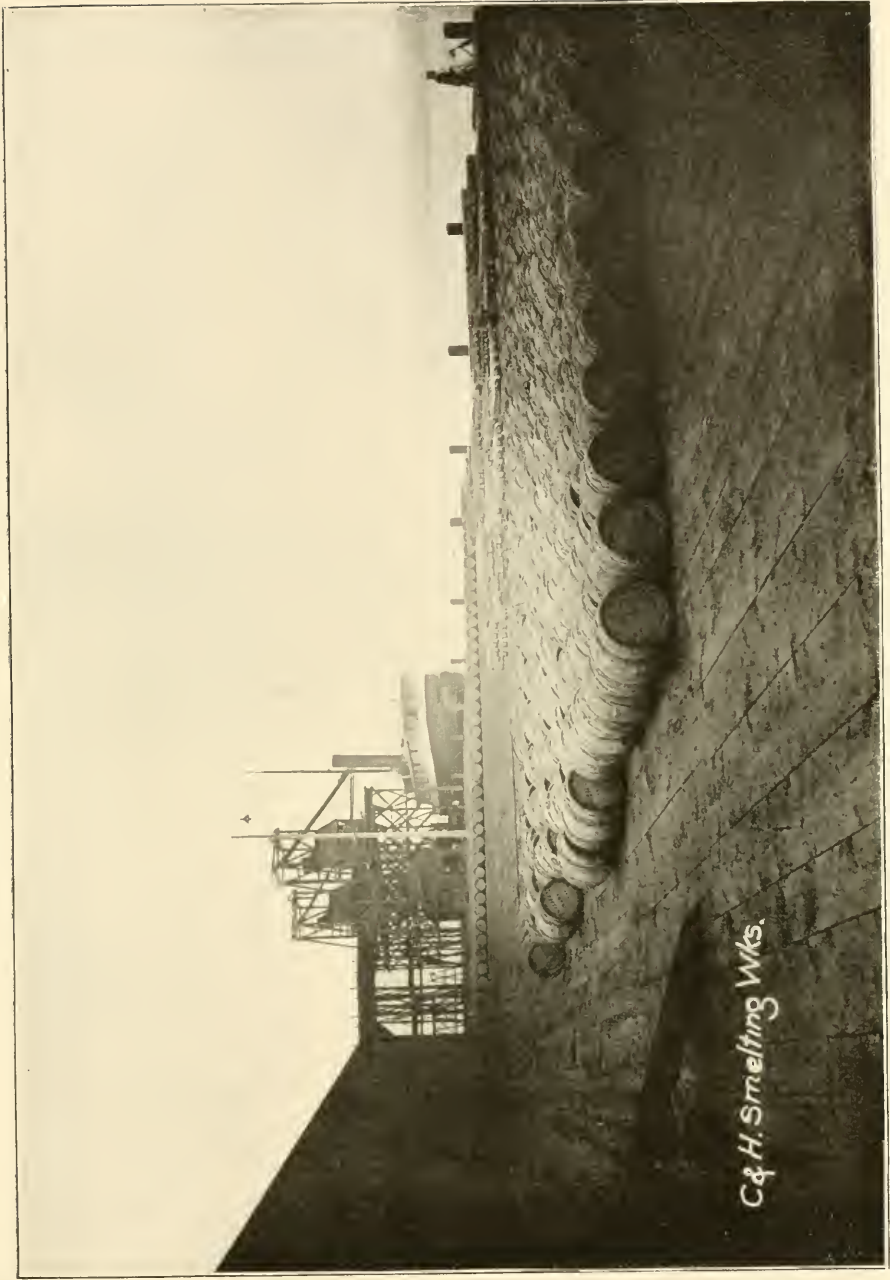
CHAMPION MILL COPPER RANGE R.R.



CHICAGO, MILWAUKEE & ST. PAUL RAILWAY, RUNNING IN CONNECTION WITH COPPER RANGE RAILROAD.



MOHAWK AND WOLVERINE STAMP MILLS.



C & H. Smelting Wks.



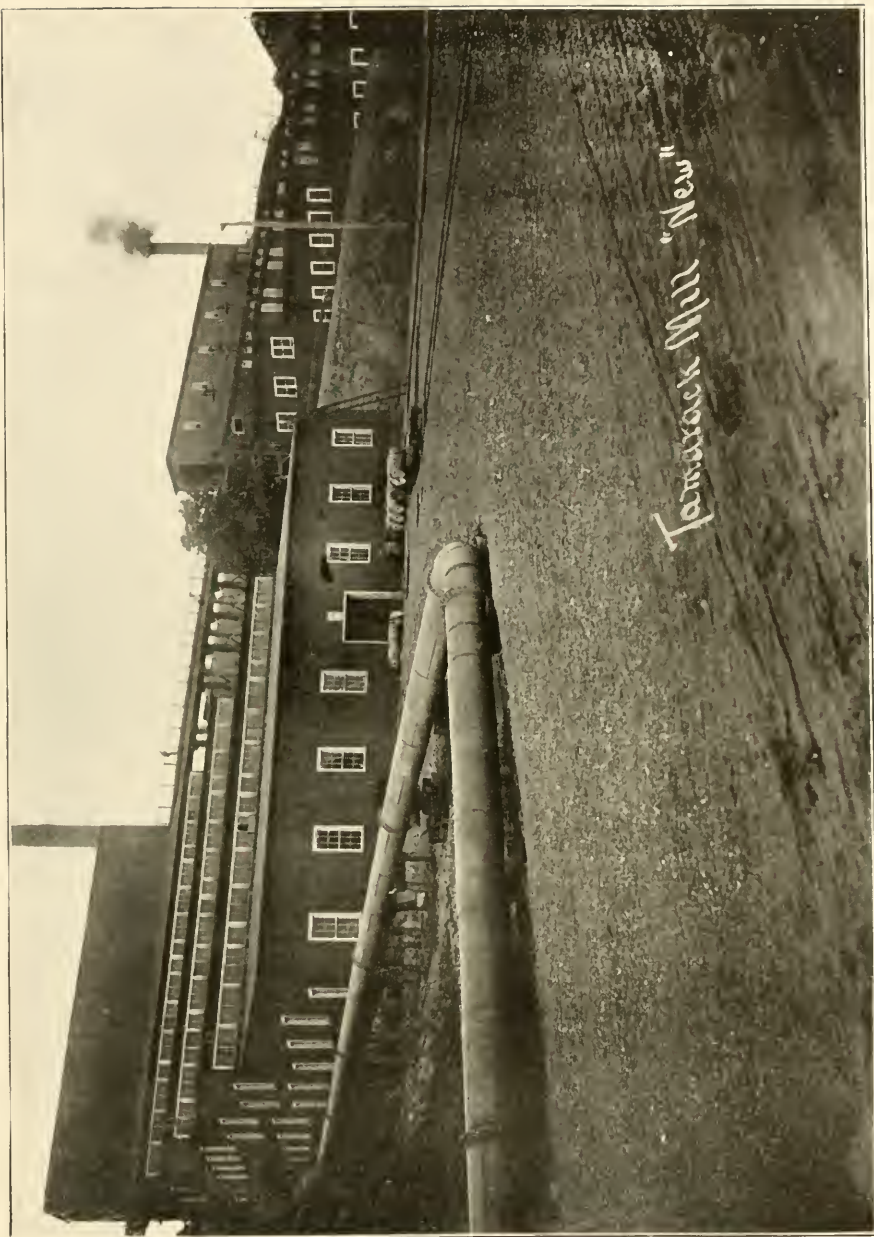
U.S. SHIP CANAL.
LAKE SUPERIOR.

PROFILE ROCK
C.R.R.

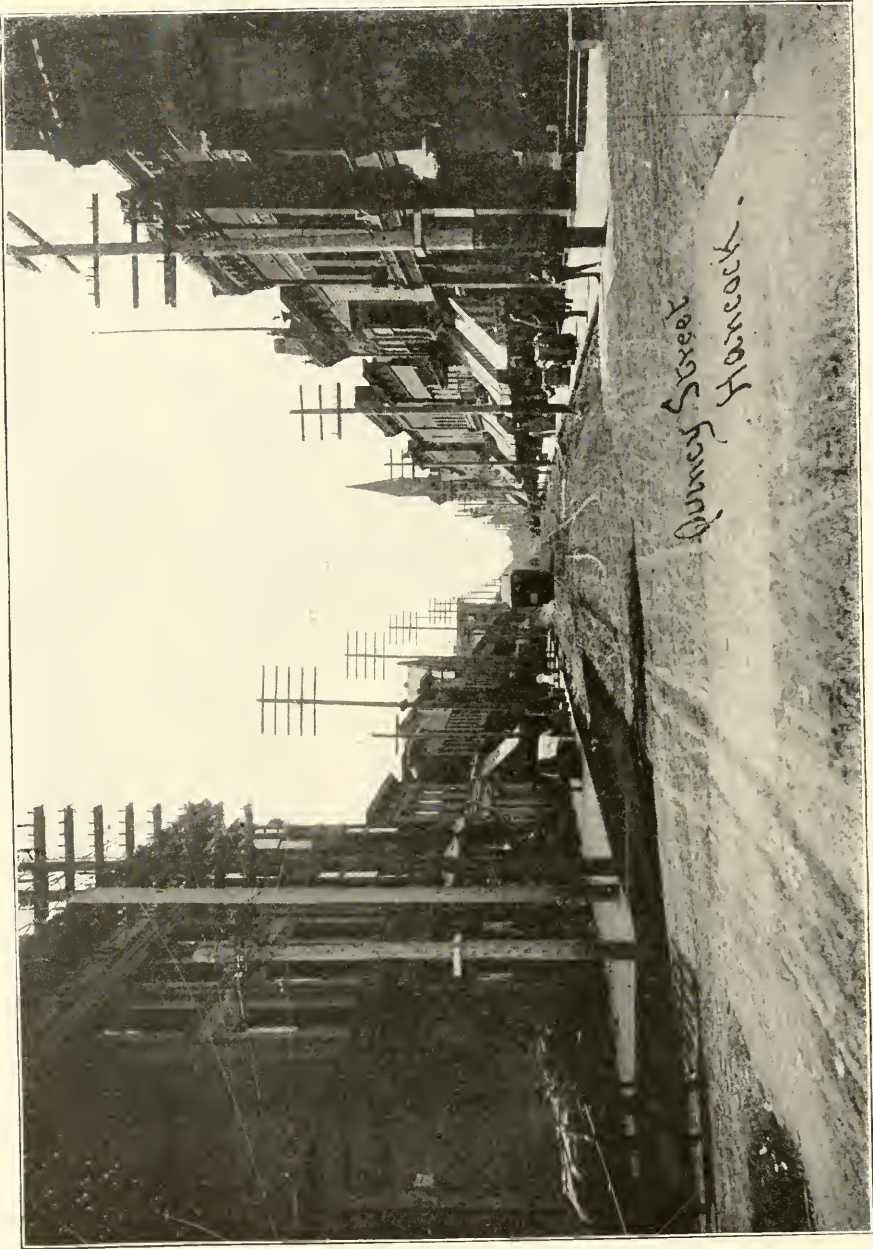




DAN COOK - FIRE DEPT.

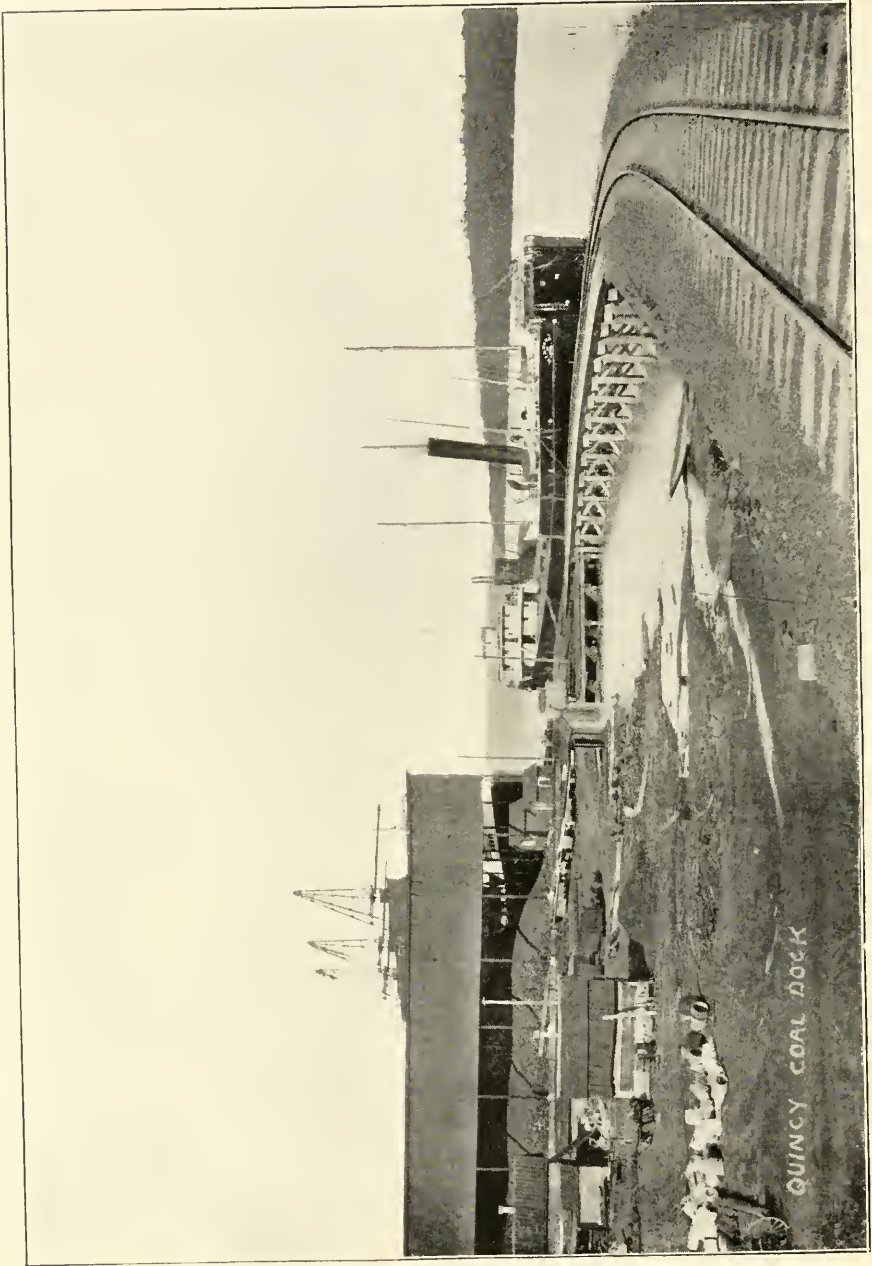


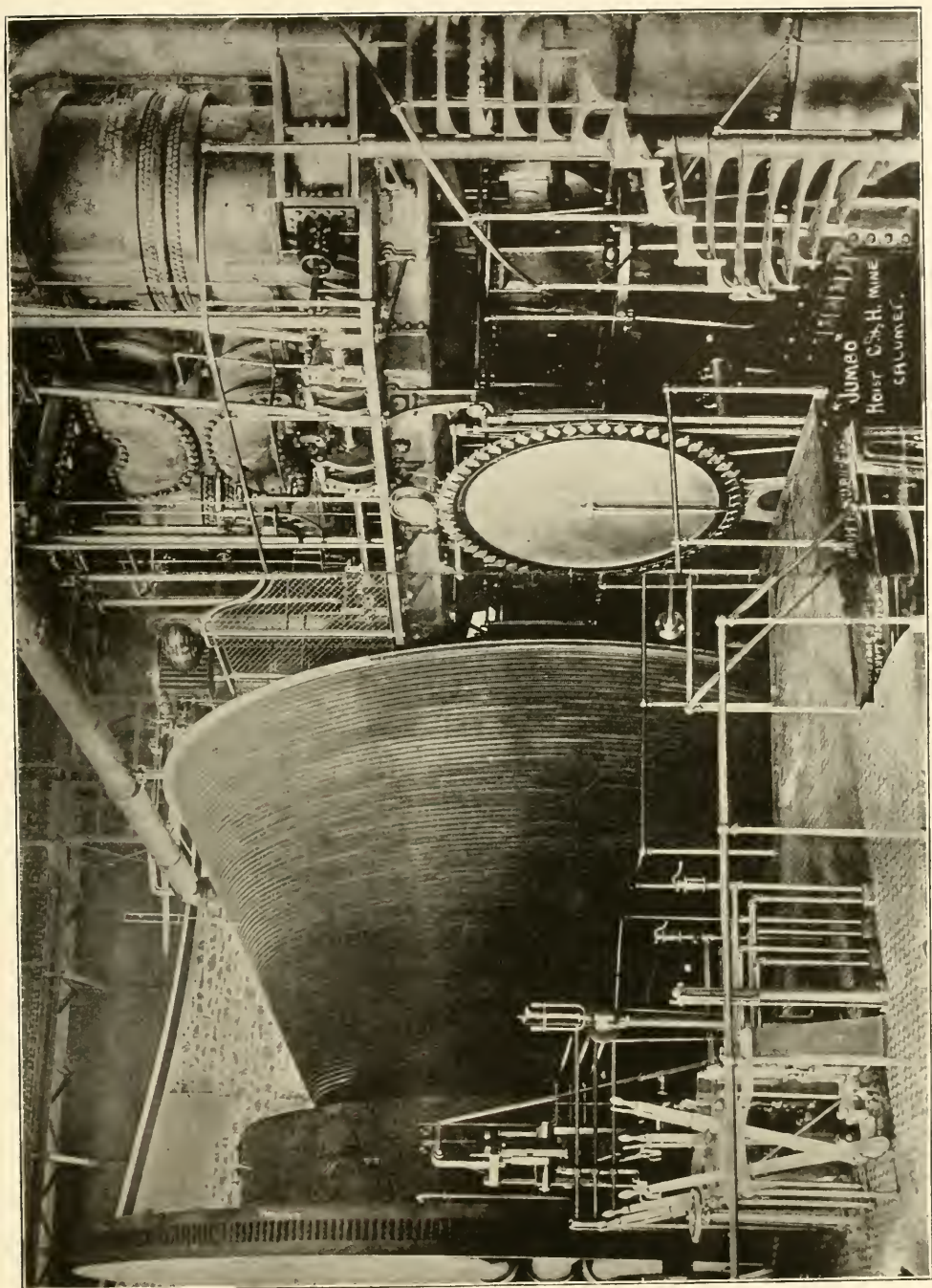
Fortrock Mill "New"

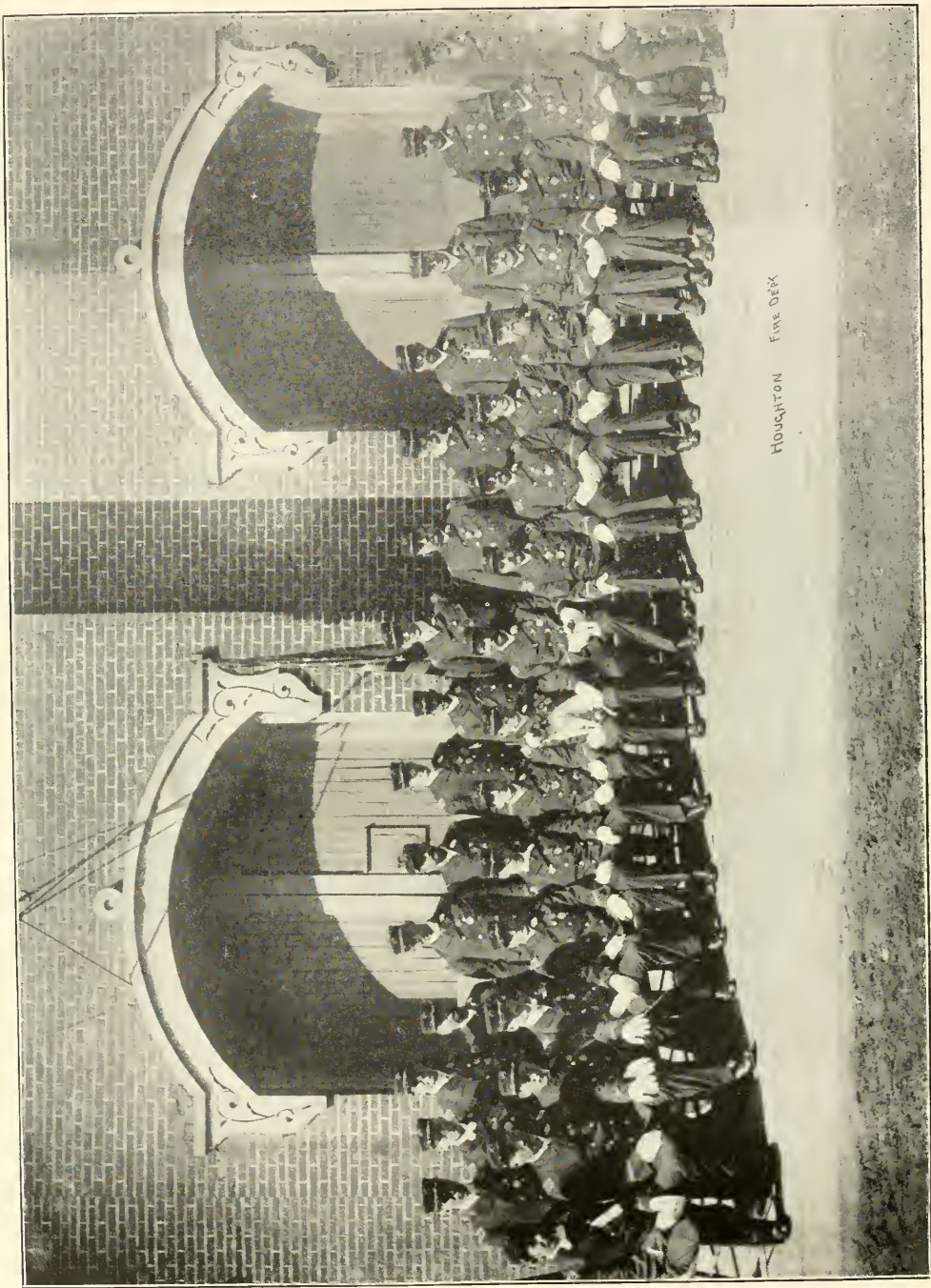




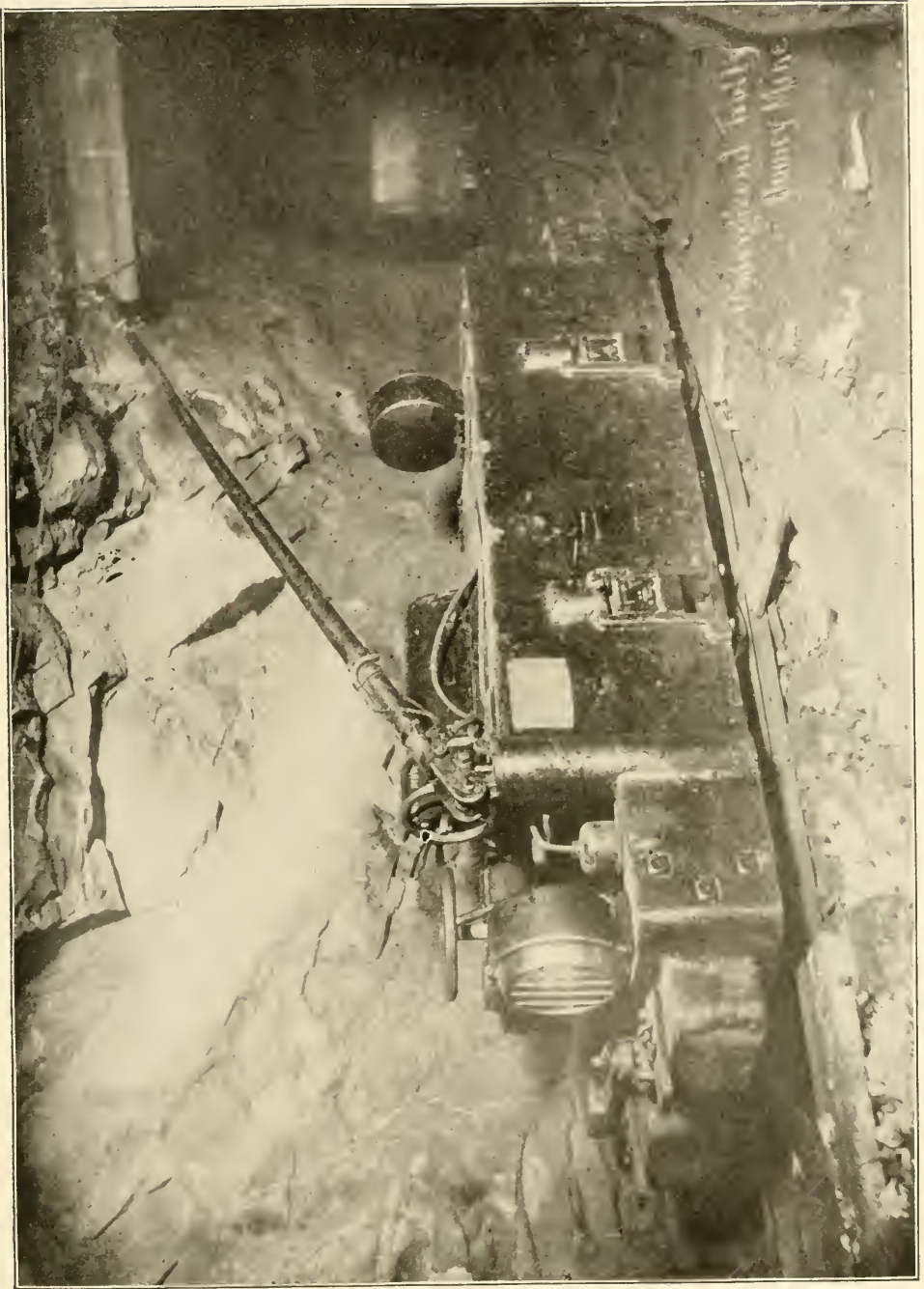
DOLLAR PLY DOCK





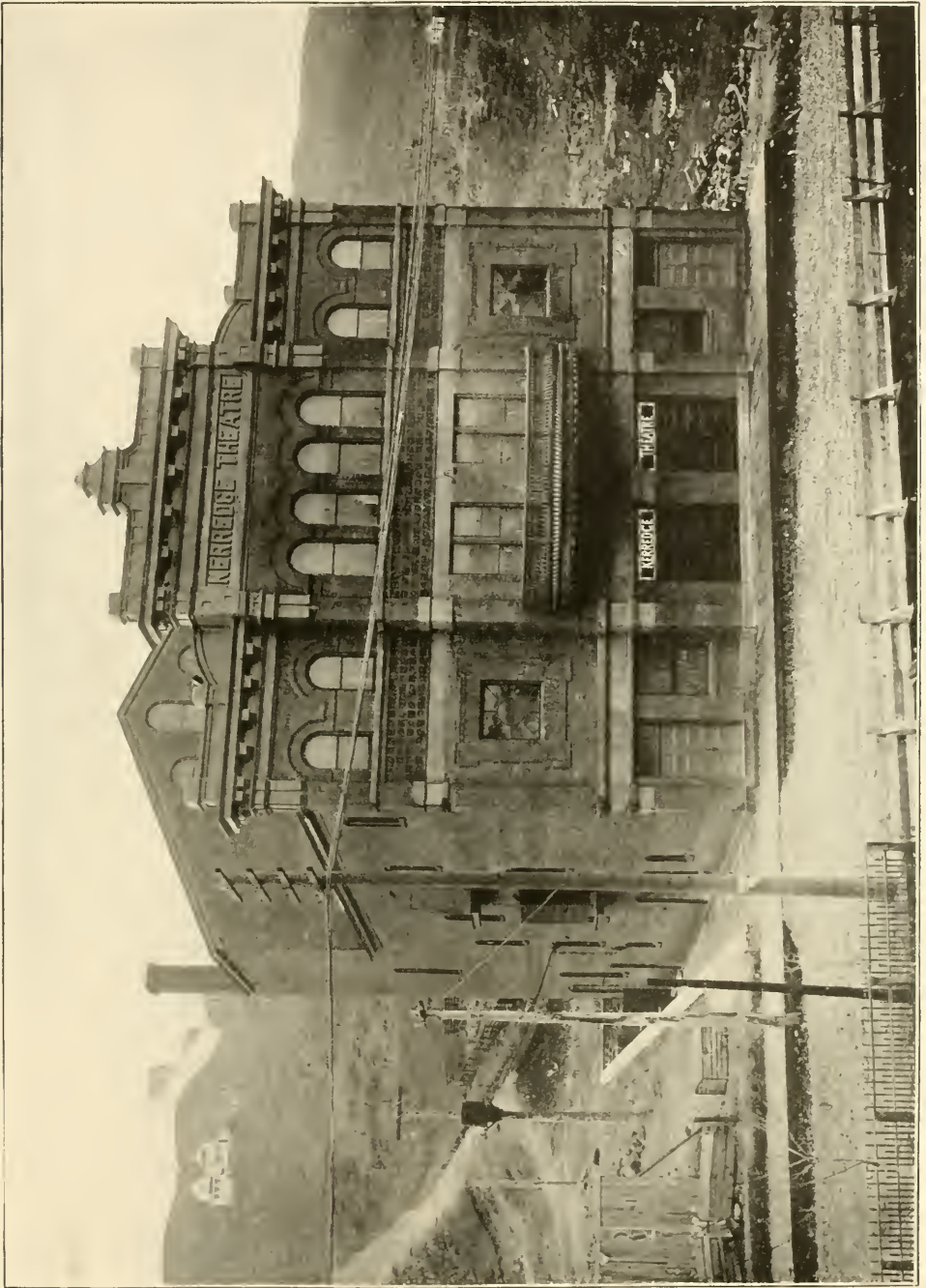


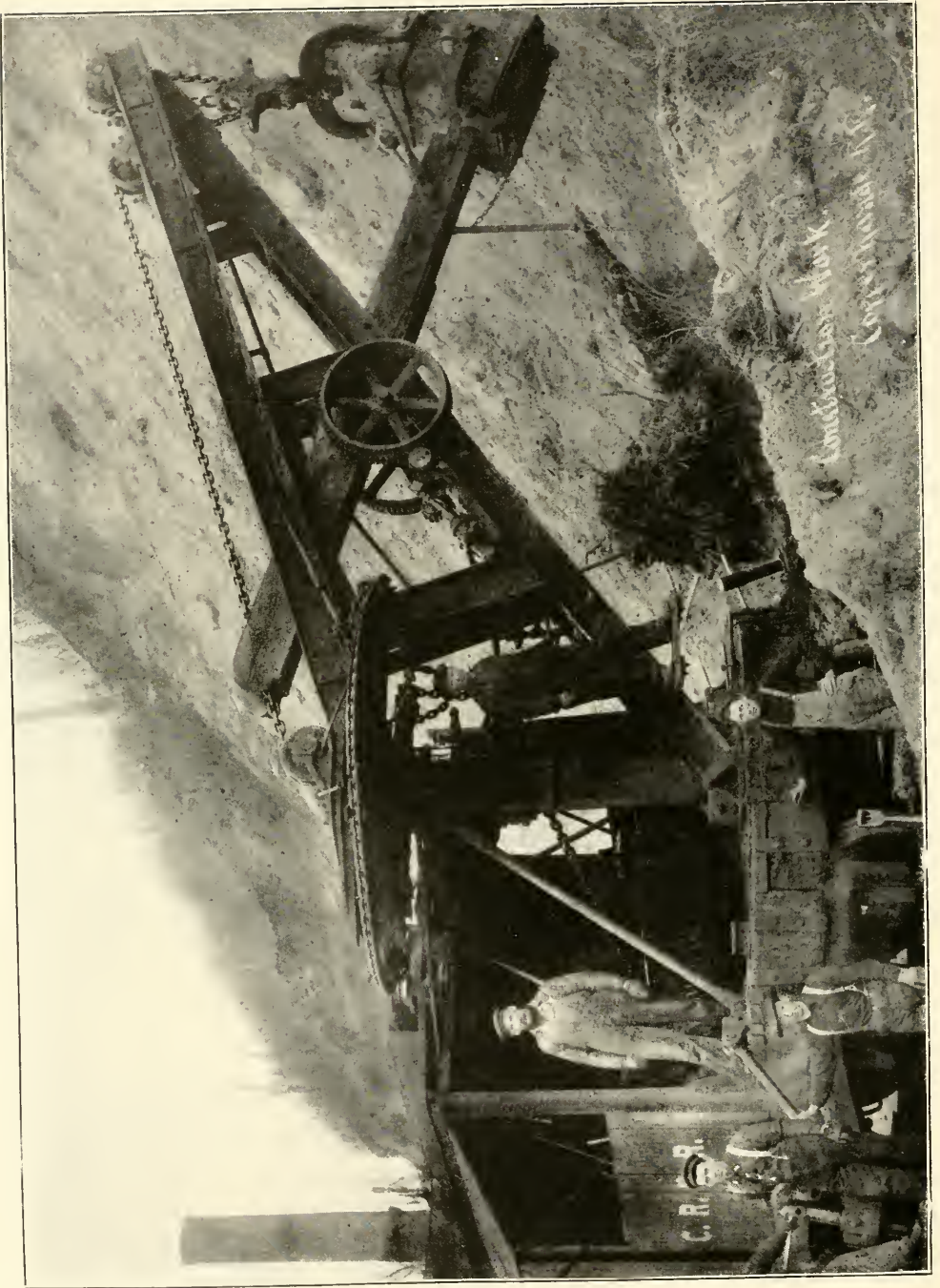
HOUGHTON FINE DECK





"THE SWING"
— FRED PARK —

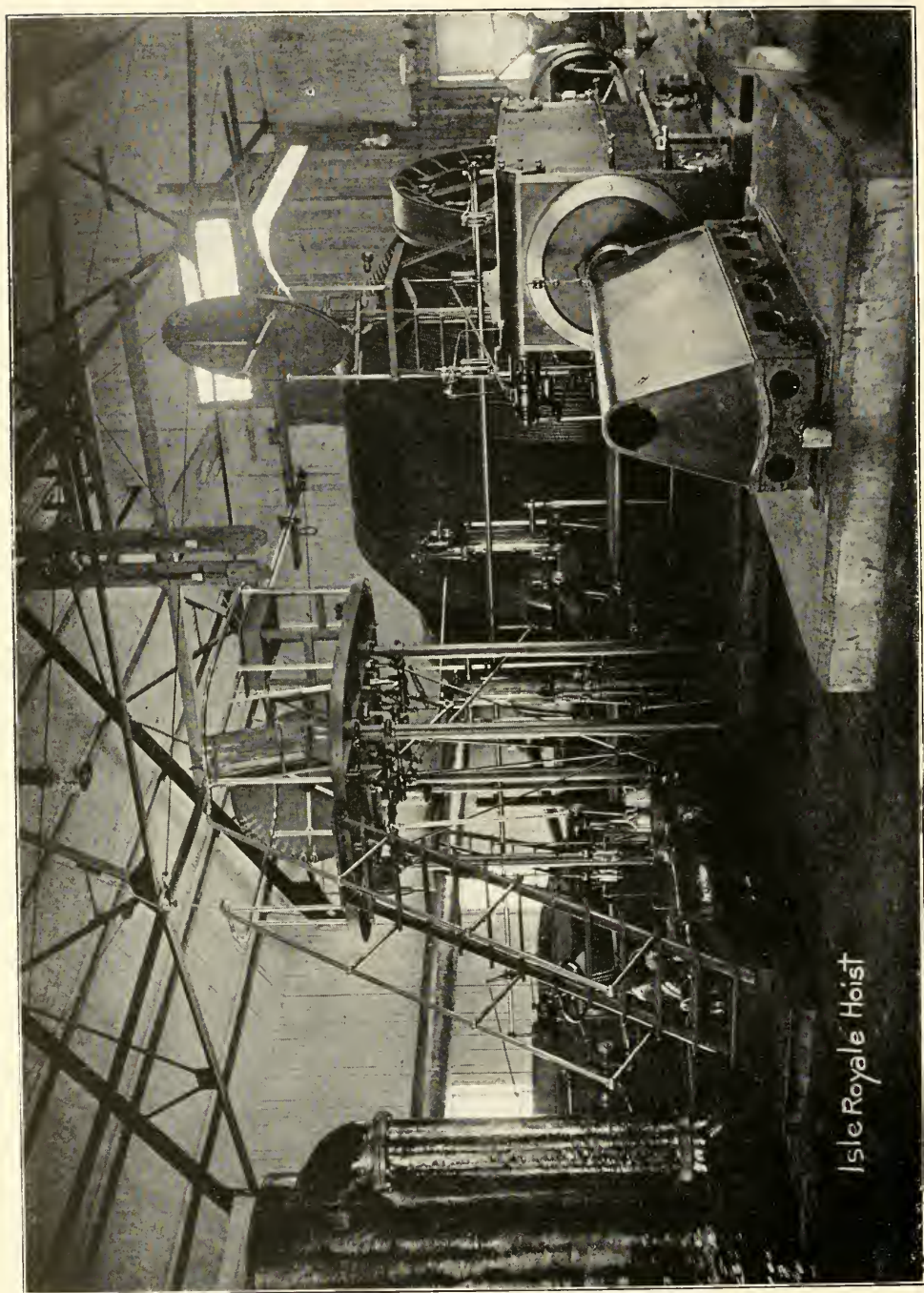




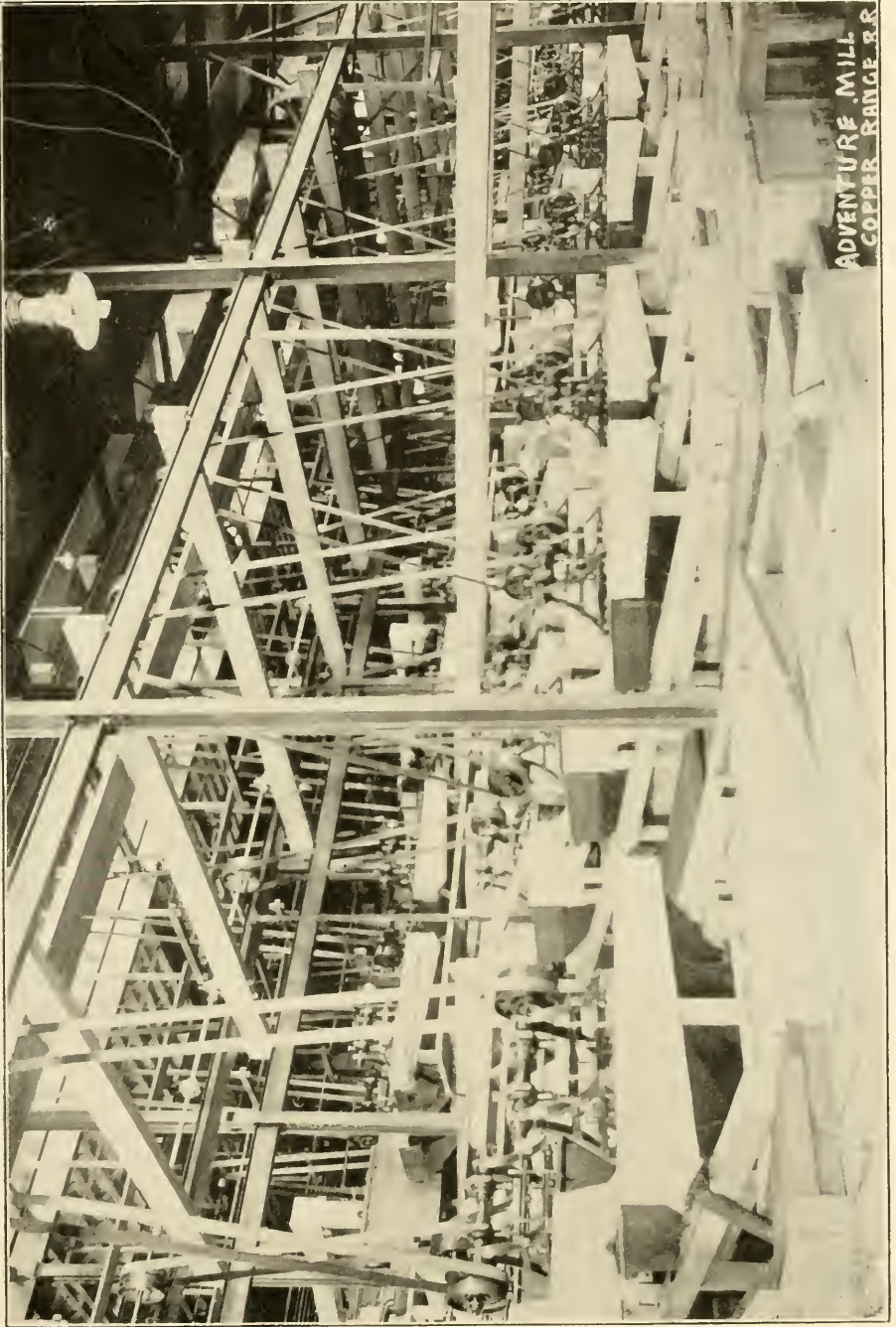
Construction Work
Cincinnati, Ohio



*Catholic Hospital
Hancock*

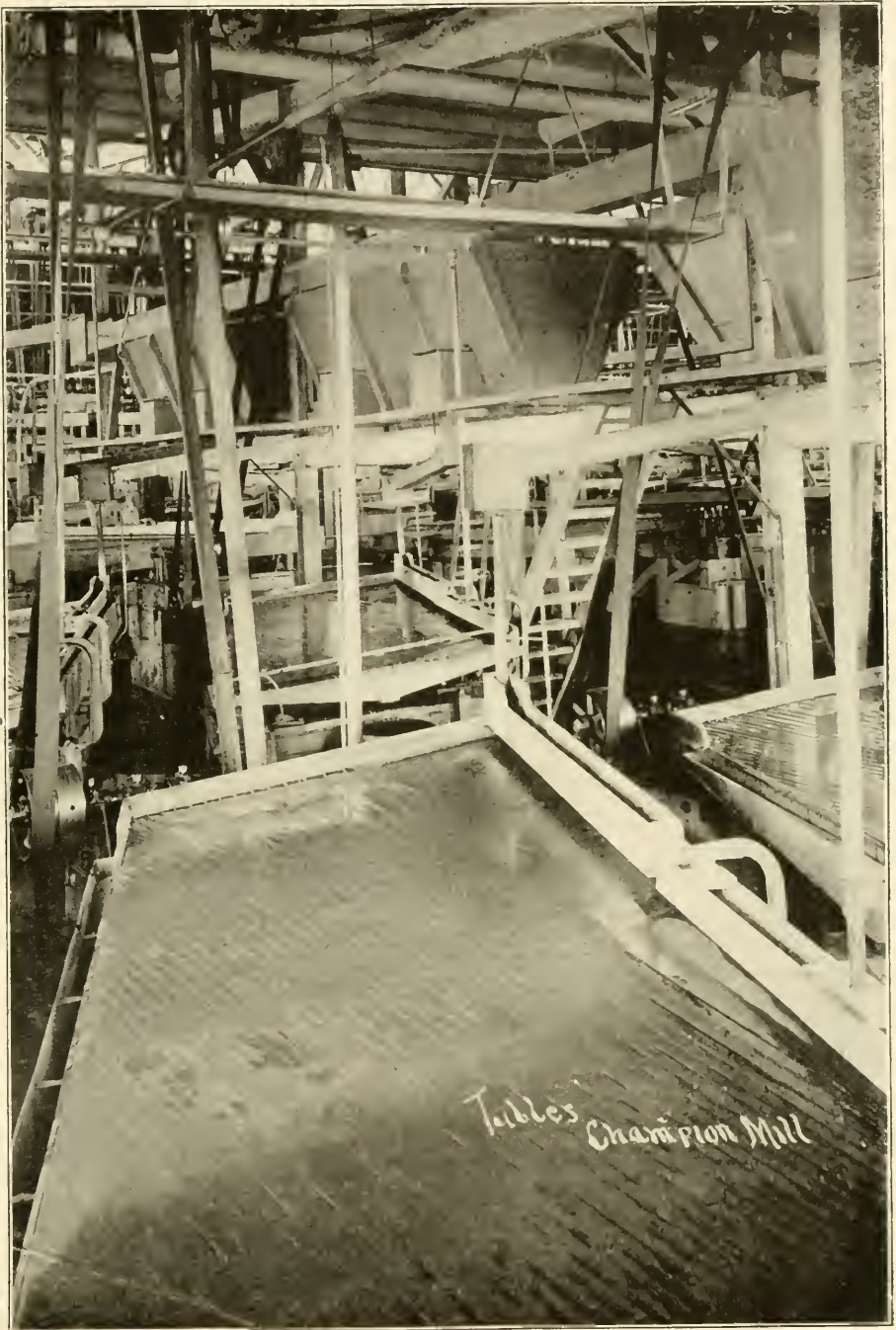


Isle Royale Hoist





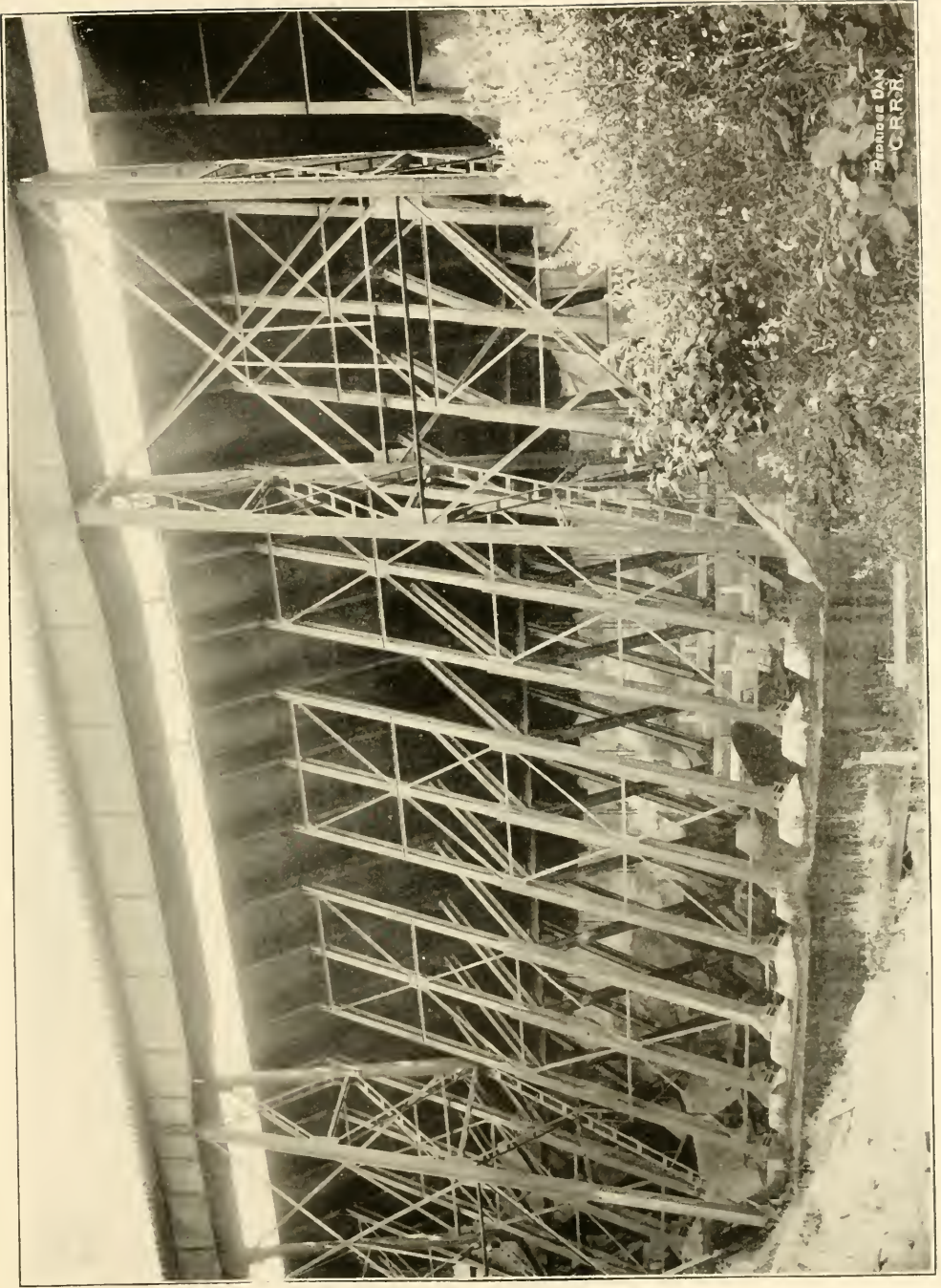
GRAYLING OTTER RIVER - COPPER RANGE B. F. TAYLOR



Tables Champion Mill

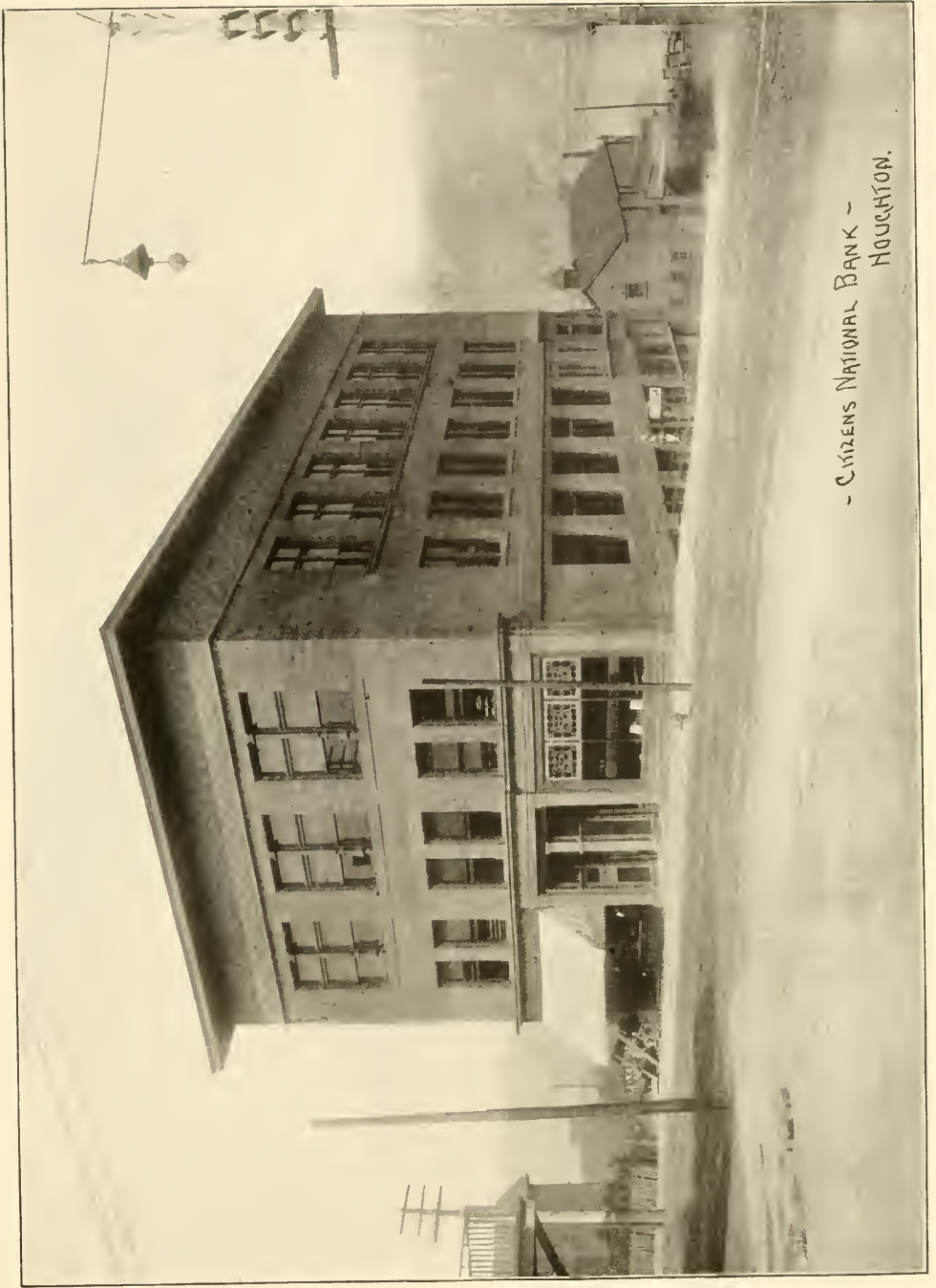


UPPER SECTION HUNGARIAN FALLS
Plate 5

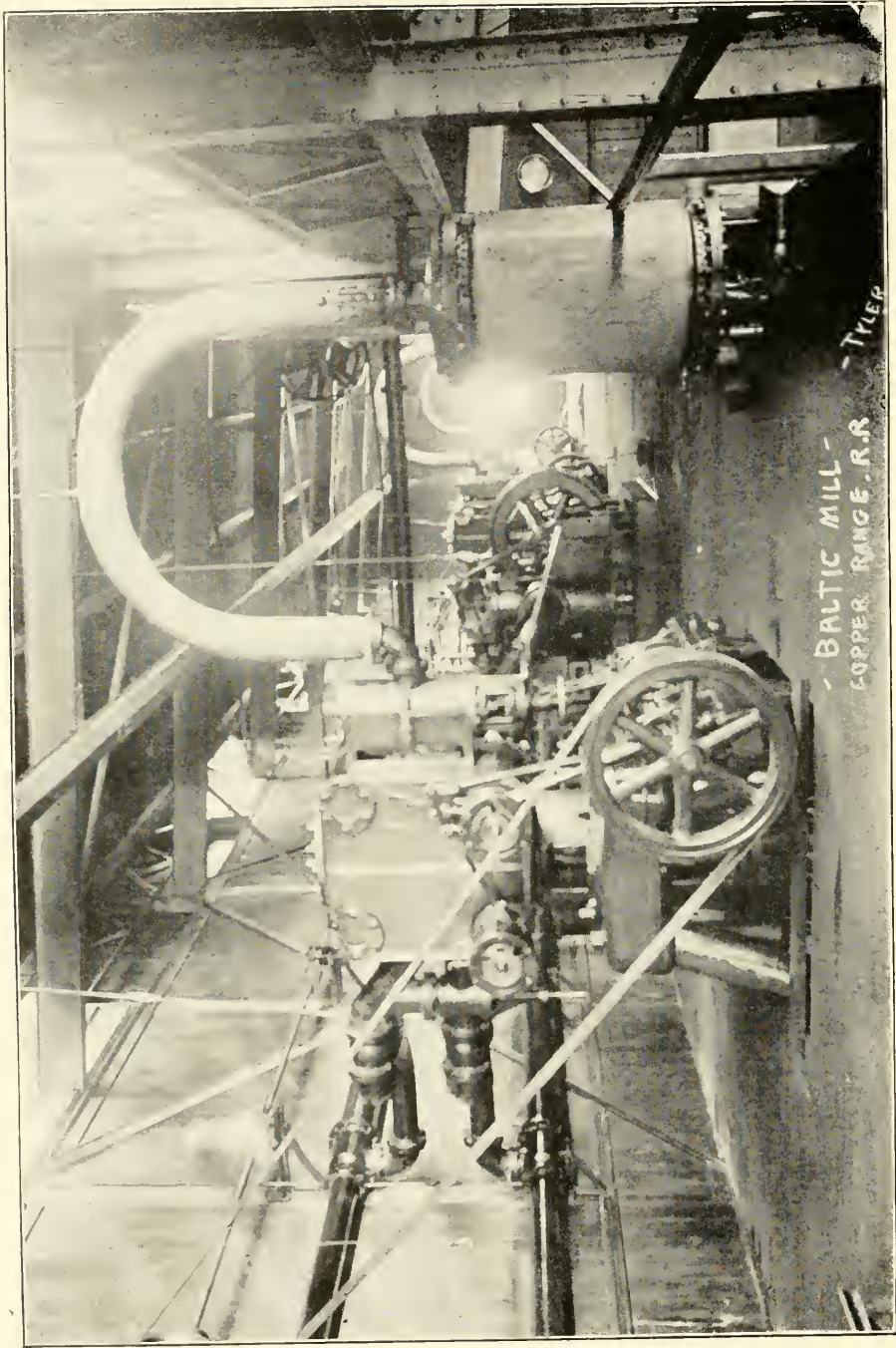


BRIDGE ON
C.R.R.





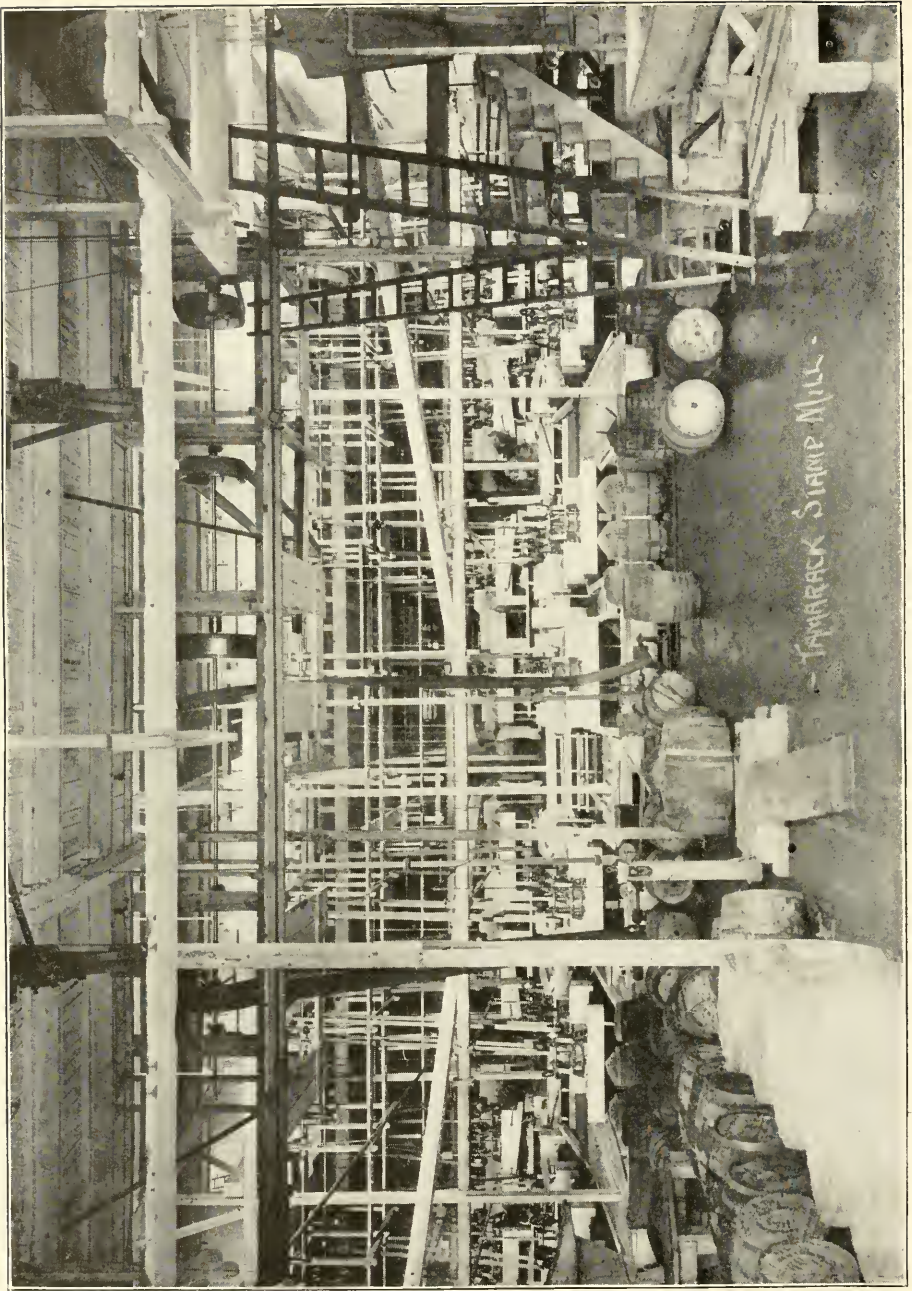
- CITIZENS NATIONAL BANK -
HOUGHTON.



BAL TIC MILL -
COPPER RANGE, R.R. TYLER



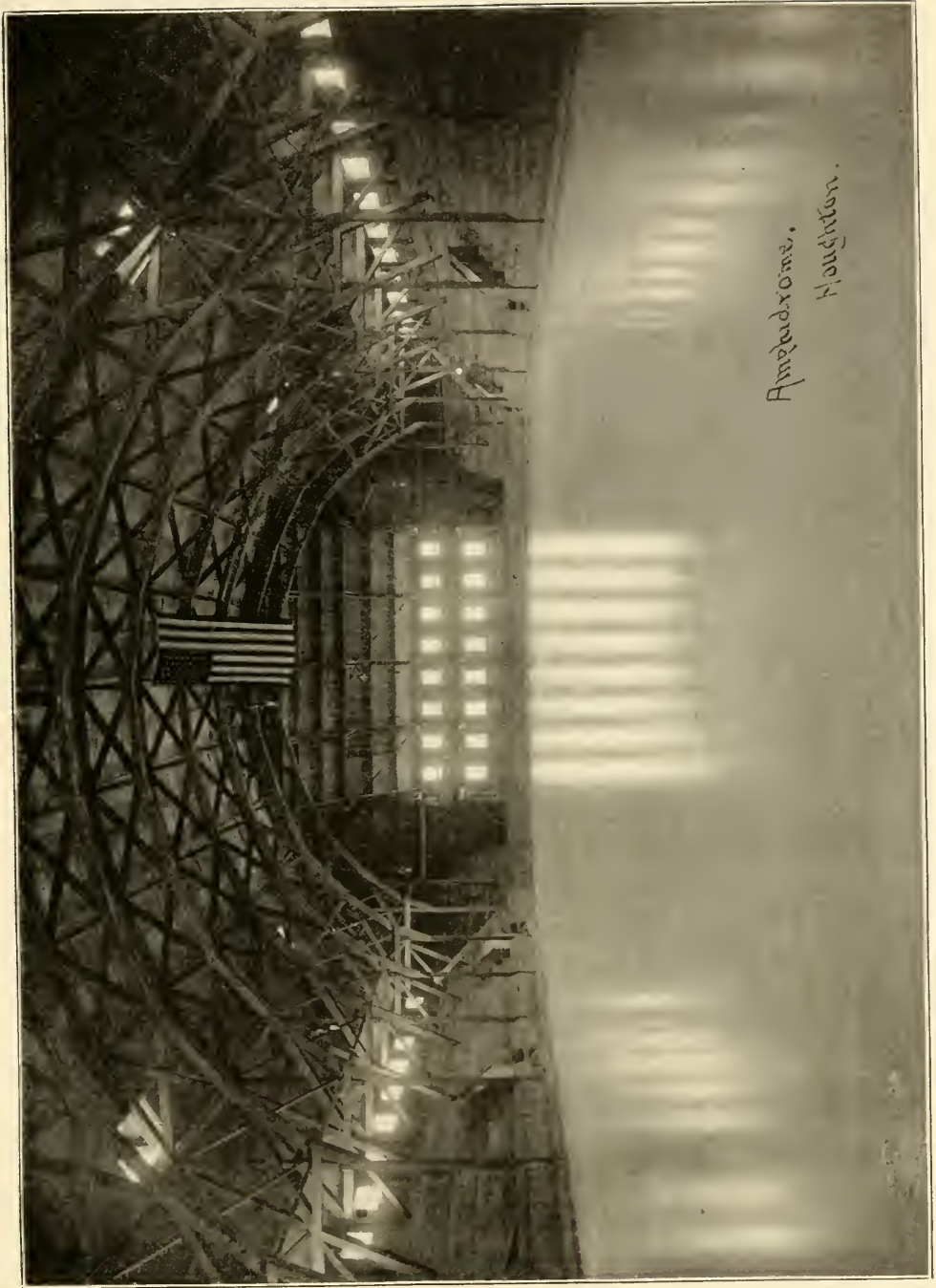
LAKE ROWLAND
C.R.R.F.



- TOBACCO SHAMP MILL -



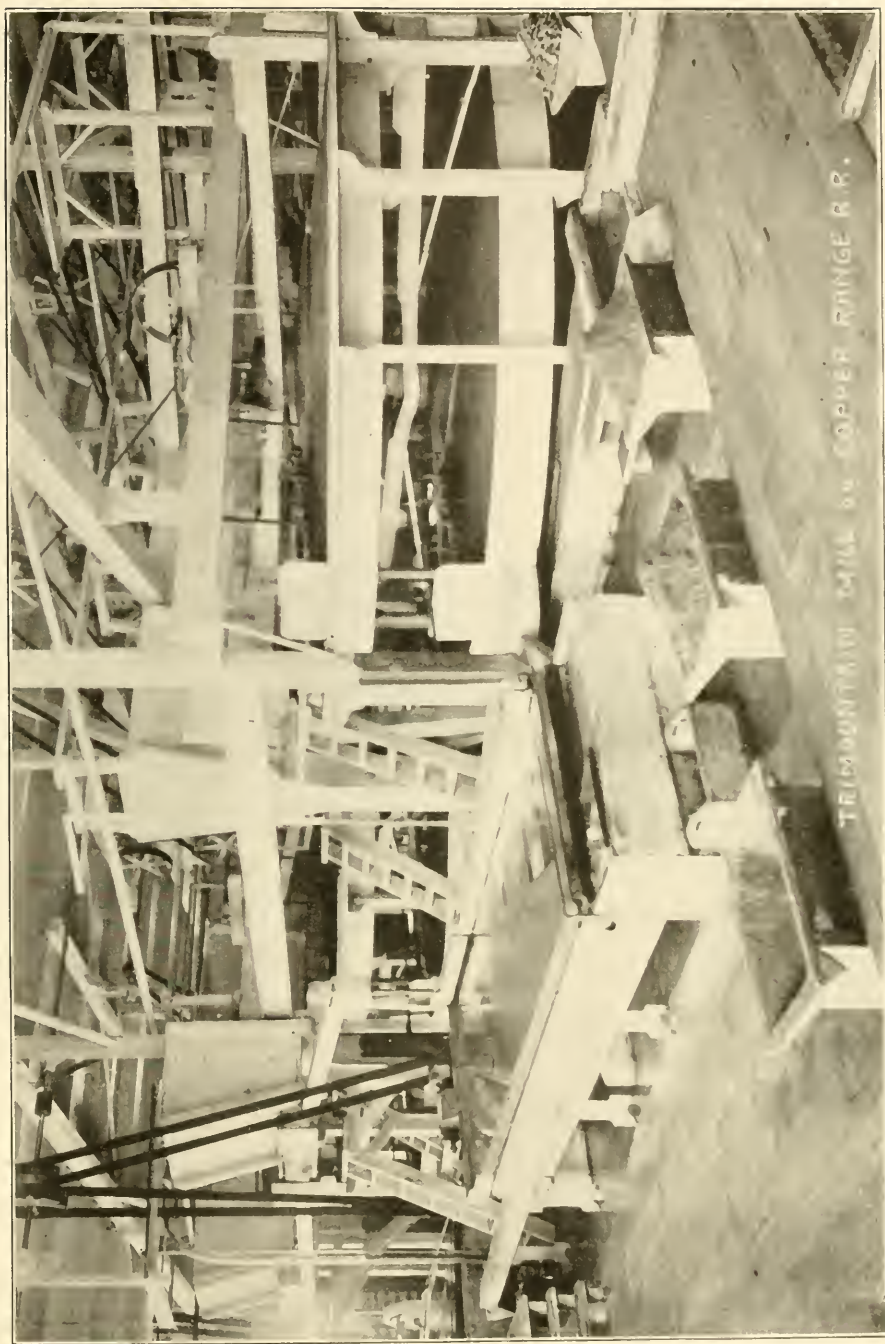


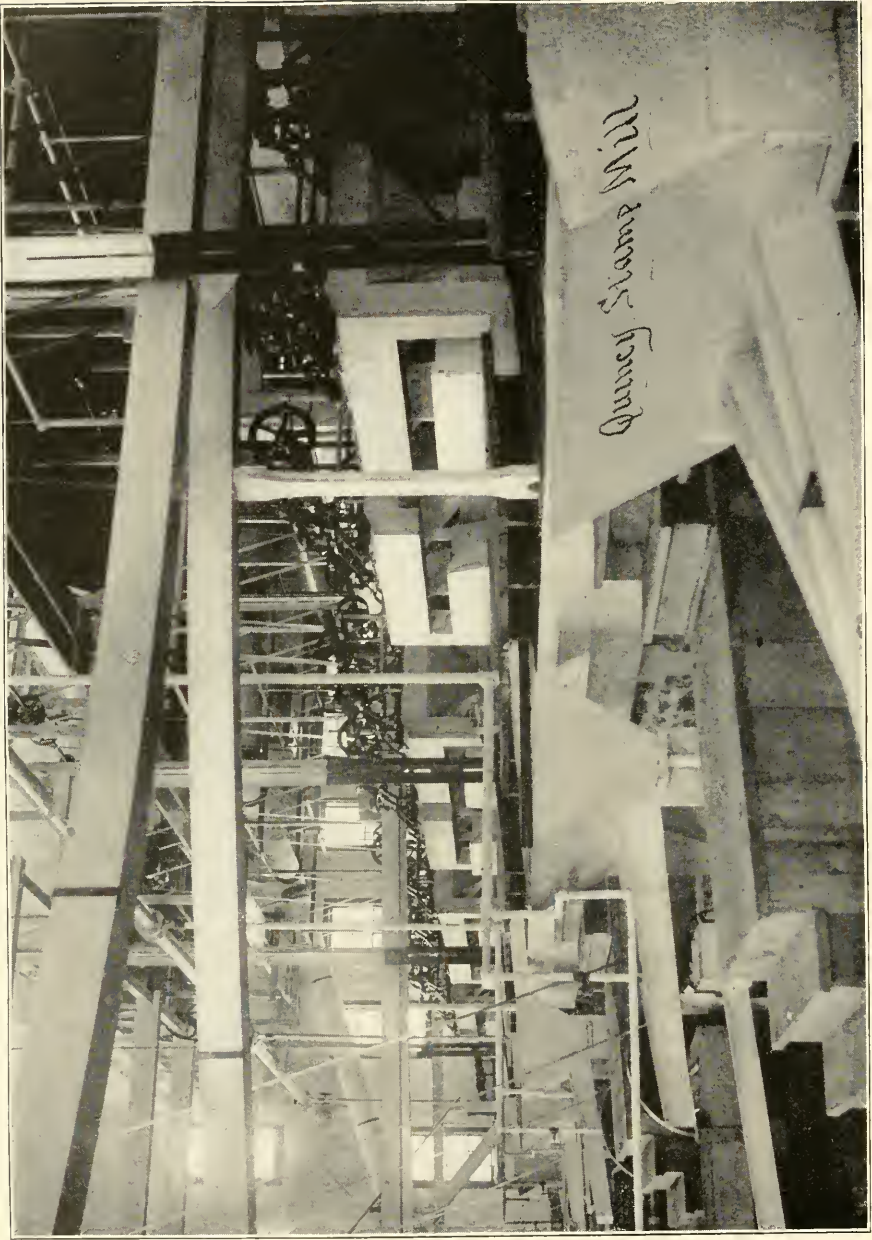


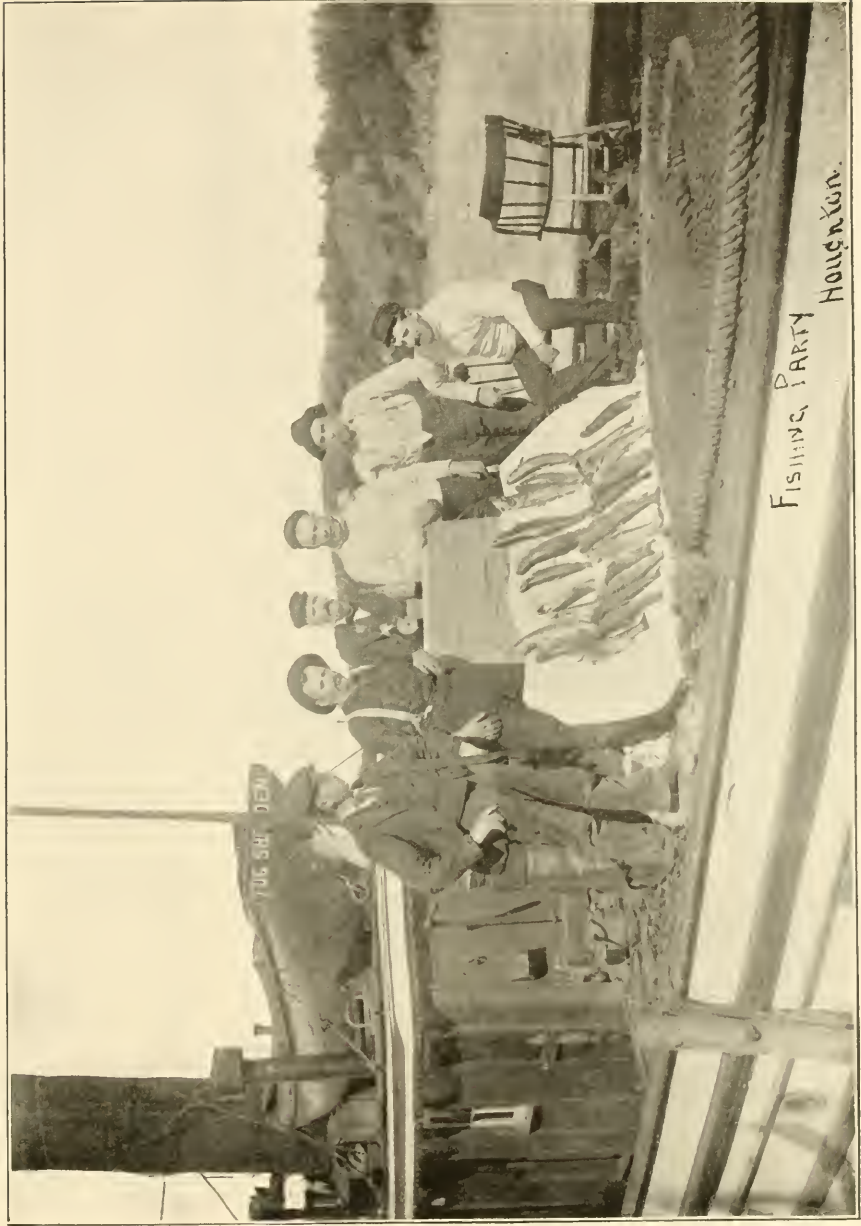
Ampedrome,
Houghton.



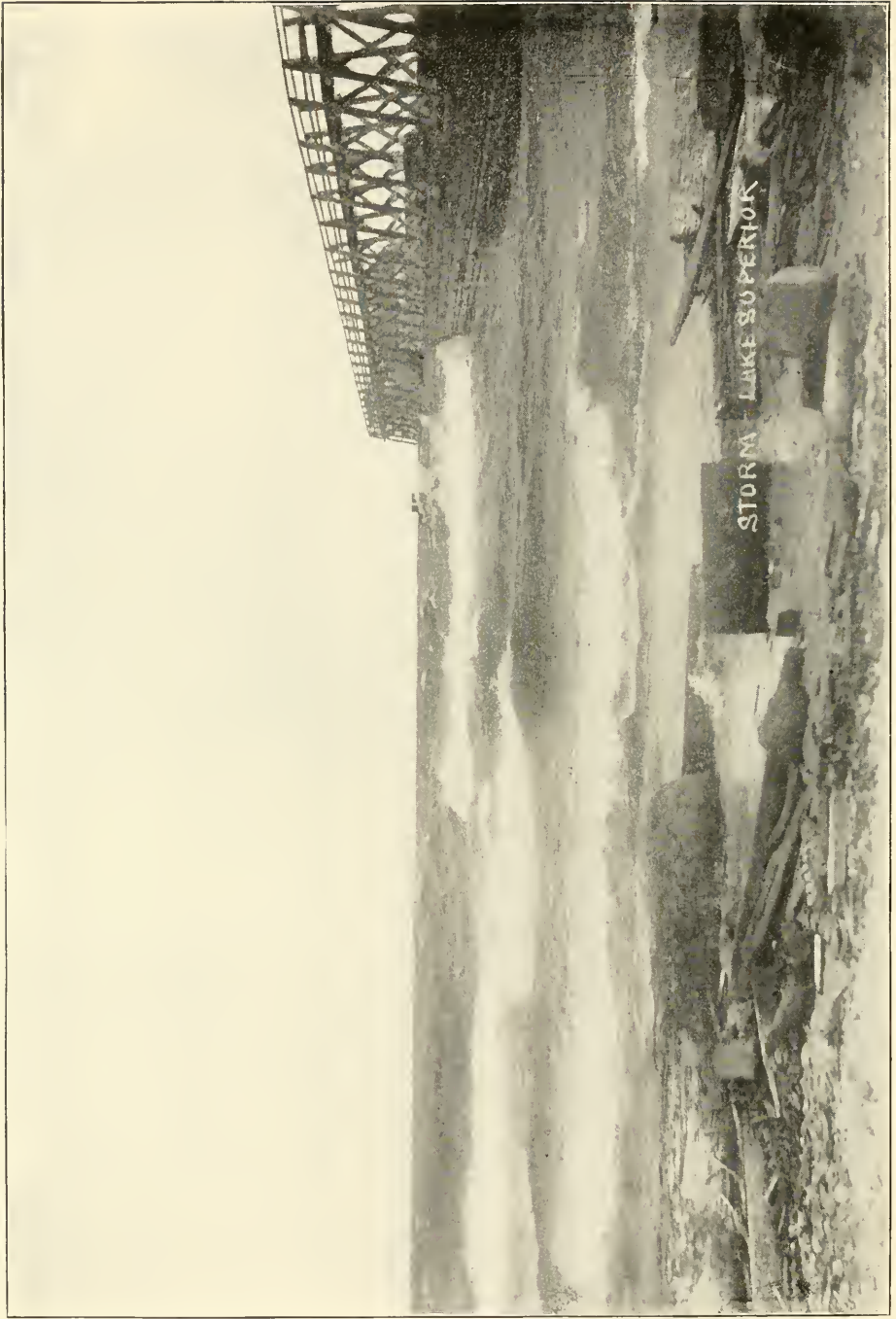
Song Partridge



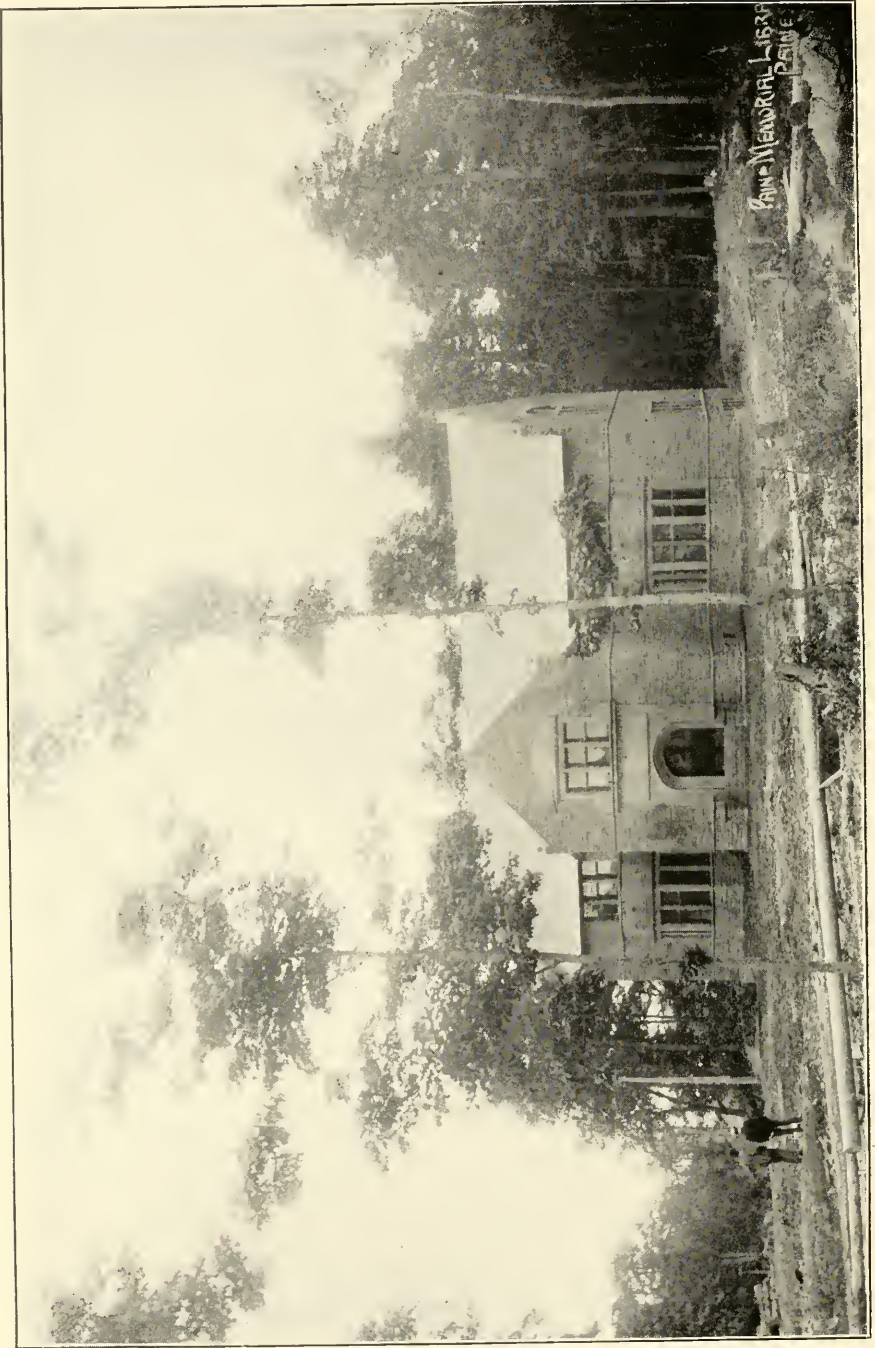




FISHING PARTY
Houghton.









Humboldt Falls
Superior, N.D.



LIBRARY OF CONGRESS



0 016 099 160 4

