

Historic, Archive Document

Do not assume content reflects current scientific knowledge, policies, or practices.

62,13

LIBRARY
RECEIVED
★ MAY 2 1928 ★
U. S. Department of Agriculture

1928

THE WORLD'S MOST

SELECT

DAHLIAS



NEW DAHLIA, MAYOR TOWER

GROWN
BY

C. LOUIS ALLING

DAHLIA
SPECIALIST

251 Court Street

West Haven,

:

Connecticut

TO MY MANY FRIENDS AND FELLOW DAHLIA LOVERS

It is always a great pleasure to write this Annual Letter, and extend to you my greetings.

The past season was a very trying one for many growers, due to the heavy rains. Those who planted their Dahlias in heavy soil were particularly unfortunate. However, the late summer and autumn months brought more favorable weather, and many of our friends reported a remarkable improvement in their plants during the latter part of the season. If your plants did not make their usual luxurious growth, you may feel certain that the difficulty was with the unusual weather rather than your cultural methods.

Hoping that the coming season may be a most successful one with your Dahlias, and thanking you for past favors, I am,

Cordially yours,

January 1st, 1928

C. LOUIS ALLING

MY BUSINESS METHODS

This list cancels all previous ones.

I send out divided field grown roots, everyone guaranteed true to name, and to arrive in good growing condition. I cannot guarantee them to grow if they are not unpacked immediately upon receipt.

All retail orders are sent Parcel Post unless instructions are received to send them otherwise. Orders taken at the Fall Shows, and all others not fully paid for will be sent C. O. D. at purchaser's expense, unless previous arrangements have been made. As the demand for some sorts often exceeds the supply, it will be well to order early and so avoid disappointment. It will also be well to name a few as second choice or state if I may substitute for any that are sold out. Full cultural directions sent with every order.

Remittance may be sent by Post Office or Express money order, registered letter, or check.

Stamps are very convenient for sums of less than \$2. One or two-cent denomination preferred.

LIBERAL EXTRAS

For Cash With Order Only

On orders amounting to \$10.00 or more, add stock of your selection to the amount of 10%

On \$20.00 or over, 15%

On \$30.00 or over, 20%

This does not apply to special collections of any kind, seed or labels.

NEW INTRODUCTIONS

The following are some of the best of our late introductions, as well as those of other well known growers. All have been thoroughly tested, and we can recommend them with full confidence.

- George E. C. Beck** (Beck). A very unusual and effective color combination is found in this new decorative. The base color is creamy yellow splashed and edged with rose and tyrian pink. The blooms are of good size, fine stems, and free flowering 4.00
- Henderson Ives** (Ives). The colors of this fine, large decorative instantly catch the eye, being somewhat different than the ordinary. The base color is waxy white, very heavily edged and marked rich carmine. Stiff stems, and all other good habits 5.00
- Mayor Tower** (Alling). This is our best contribution for 1928, and is named in honor, and with express permission of, Hon. John B. Tower, Mayor of the City of New Haven, who, when consent was asked, remarked that it was so beautiful that he could not refuse. The first feature to attract one is the very uncommon color; in fact, this is our chief reason for the color cut. According to Ridgway's chart, it is coral pink to old rose, with a yellow disc in the center. This is subject to some variation with the changes of the weather. Mr. Batcheller, in his account of the New York show, describes it as a rich plum color, and we think most people will agree with him. It is of large size. Flowering habit is profuse, and it has a long, wiry stem with no inclination to droop. We used it very extensively as a commercial cut flower and found it a remarkable keeper when cut. We have a splendid stock of it, and are placing it on the market at a very low price for a new variety. \$5.00 per tuber. 3 for \$13.50
- Mrs. C. R. Sherman** (Meachen & Sherman). This large decorative resembles "Mordella" in color, but is much larger and has a fine, heavy, rigid stem, and is of much larger size. The color is apricot pink, shading to peach pink. The plants make a very heavy, dark growth, which seems to be resistant to insects. \$10.00 Net. May 15th delivery
- Miss Evelyn Kassabian** (Kassabian). This big rosaline pink attracted much attention in our exhibit at the New York show. It may be compared to "Glory of New Haven" in form and color, but will keep much longer when cut, due to its waxy finish. A large size decorative, good stems and a profuse bloomer. \$10.00 Net
- Mrs. Leonora Kassabian** (Kassabian). We used this charming decorative for the center of our display in New York, and it seemed to instantly attract the attention of all visitors. Its

Kindly write your Special Instructions on a Separate Sheet.

ORDER SHEET

Issued by

C. LOUIS ALLING, DAHLIA SPECIALIST
WEST HAVEN, CONNECTICUT

FILL ALL THESE BLANKS

Date..... Amount enclosed.....

Your Name.....
(Write it plainly. Ladies will please use the prefix Miss or Mrs.)

City..... Street.....

State..... County.....

Shall I substitute for any that are sold out?.....

About what date do you want them shipped?.....

NO SHIPMENTS MADE UNTIL AFTER APRIL 1st

**HOW
MANY
BULBS**

NAME OF DAHLIA

PRICE

HOW MANY BULBS	NAME OF DAHLIA	PRICE
		\$ c

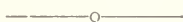


DECORATIVE DAHLIA "MAYOR TOWER"
ALLING 1928.

Tubers \$5.00 each; 3 for \$13.50

Plants \$2.50 each; 3 for \$ 7.00

- delicate colorings make it something new and distinct in Dahlias, being a lovely combination of phlox pink and white. Profuse bloomer and heavy, erect stems. We believe if you try this variety you will not regret it. Certificate of Merit A. D. S. \$10.00 Net
- Pride of Meriden** (Kassabian). This flame scarlet hybrid cactus was another which attracted much attention in New York. The colors are so brilliant as to almost dazzle the eye. The size is large, and the plants produce an abundance of blooms, but unfortunately the stem is inclined to curl. \$5.00 Net
- Purtitan** (Kassabian). Red decoratives are very plentiful, but this is such a rich color as to be different. The color for the most is deep ox-blood red, with just a suggestion of carmine at the edge of the petals. The stem also makes it very worth while, being long and stiff, and it is an excellent bloomer. \$5.00 Net



DECORATIVE DAHLIAS

NOVELTIES AND OLD FAVORITES

Prices Given are for Strong Field Grown Tubers. Sturdy
Green Plants of the New Varieties at One-half Price

- A. W. Davidson.** The colors of this large new decorative are almost beyond our powers of description, but we are doing our best. The base is creamy yellow deepening to a blush pink tipped and streaked rose. Large size and an early consistent bloomer 1.50
- Alex Waldie.** The colors of this variety are very soft and pleasing, a creamy ground overlaid delicate peach pink. Stems erect50
- Altamont.** The feature of this new variety is the wonderful length of rigid stem, to which may be compared those of Jersey's Beauty. The blooms, which may be grown to a very large size, are a pleasing American Beauty rose color and have a peculiar waxy formation 5.00
- Amun Ra.** This bronze California beauty scarcely needs any descriptions. It is a gorgeous combination of orange and bronze with a slight reddish tinge in center. Has wonderful stout stems, and blooms last exceptionally well when cut75
- Biltmore.** The ground is a bright rich carmine and the petals are more or less tipped white. May best be described as a Peony-Decorative as late in the season it comes Peony type50

- Black Jack.** The best dark variety we grow, being deep crimson maroon, which might almost be described as black.
Large blooms on erect stems and a free bloomer 2.00
- Bonnie Brae.** This is a Dahlia of extremely pleasing color, the ground color being cream and overlaid a delicate blush pink.
It may be grown to enormous size50
- Brian Breau.** This is one of the first plants in the garden to bloom, and continues bearing the enormous blooms, freely on long, strong stems until the end of the season. The color is deep royal purple50
- Casper G. Ware.** To those looking for a real novelty we can heartily recommend this variety, as it has exceptional exhibition and commercial qualities. Flowers are large, usually 8 to 10 inches across, regularly formed and produced profusely on strong stems. Color bright clear violet rose 3.00
- Charles E. Wheeler.** A large, rich lavender variety having heavy bronzy green foliage, and held erect on long, heavy stems.
One of the best 1927 introductions 10.00
- Champagne.** The absolutely upright stems and the beautiful autumn shadings of this Dahlia tend to make this a real worth-while variety. The color varies from burnished copper to a dull golden champagne and chamois 2.00
- Charles Stratton.** This grand exhibition variety has created quite a sensation in the Dahlia world of New Jersey where it originated. It is a large fluffy flower of pale gold shaded and tipped old rose 2.00
- Charm.** Here is a real autumn colored dahlia, being a charming combination of burnt orange and golden yellow75
- C. P. R.** A popular new variety of golden buff, having slight shadings of magenta suffused through it. Size is very large, has good stems and a free bloomer 2.50
- Dakota.** This is one of the Marcan group. It is a large impressive flower of brilliant flame color and is borne on the extreme top of a very stout stem50
- Delice.** Beautiful soft pink. A grand flower25
- Dorothy Pratt.** This fine crimson variety has never been widely advertised, as the originator was not a commercial grower. Nevertheless, we believe it one of the best of its color, and reds are fairly plentiful. Has a fine stem, does not burn in the sun, in fact is an all-around clean grower. Color brilliant crimson 1.00
- Dr. Tevis.** A magnificent blossom of a blend of copper, old rose, and old gold. Immense flowers with the best possible stem75
- Eagle Rock Beauty.** A more beautiful combination of pink and cream than is displayed in this glorious creation would be difficult to imagine. Vigorous in growth, with good habits,

and a stem which holds the flower erect. Immense blooms are full to the center and produced in abundance	10.00
Eastern Star. A new variety which we believe has come to stay as it combines all the good qualities of size, stem, and freedom of bloom, also lasting exceedingly well when cut. Color soft saffron yellow with old gold shadings	3.00
Earl Williams. An immense deep scarlet with white tip. One of the most popular bi-colored varieties	1.50
El Dorado. Here is a variety which just seems to enjoy throwing big blooms and many of them. The color, too, is also different, being a vivid gold that deepens toward the base	3.00
Eliza Clarke Bull. This splendid Bessie Boston variety is recognized as the most popular white grown today. The flowers are of the most perfect form, being very full and deep and, of course, it has a good, erect stem. Color is clear, waxy white	5.00
Elite Glory. This is regarded as a distinct "break" in the Dahlia World on account of its immense size and marvelous width of petals. Its effect is spectacular either in the garden or on the exhibition table, where the size makes it of particular value. The color is bright radiant red	5.00
Fleming. An excellent variety for cutting, by reason of its fine stems and clear, bright shell pink color. Very prolific ..	.35
Fort Washington. The phrase, largest dahlia grown, seems to be very much overworked at present, but we really know of no other description for this monster. We have seen many blooms of it 10 to 12 inches in diameter, and what is more unusual with these big fellows it has a fine, erect stem. The outer petals are a deep crimson deepening in the center to a fine, rich maroon	7.50
General McRae. A very popular autumn shaded variety, being apricot suffused gold. The blooms are large, well formed, and are held on rigid dark stems	3.50
George S. Harvey. For use on the exhibition table this huge bloom is hard to beat. The color is purplish magenta with streaks of white	2.00
Glory of New Haven. This huge pinkish mauve bloom is one that you should not be without. Blooms freely on stout stems ..	.75
Grandola. This variety is somewhat different from the ordinary. The principal color is golden orange, but some red suffusions may be found. Good size and stem	5.00
Ida Tarbell. Large cerise purple supported on top of a very rigid stem75
Islam Patrol. A very dark velvet scarlet tipped and flushed with gold. Fine long stems, a good keeper and a prize winner everywhere	2.00

- Iola A. Blodgett.** A beautiful stripped variety of amaranthe pink with stripes and splashes of deep rose. Medium size, profuse bloom, and very long, wiry stems 1.00
- Jersey's Beacon.** One of the most popular of Mr. Waite's late introductions, and has been awarded the blue ribbon wherever it has been shown in the red classes. The color is Chinese scarlet, with a paler reverse giving a two-toned effect. The flowers are very large and globular in form. It is a prolific bloomer on stems which hold the bloom perfectly erect 2.50
- Jersey's Beauty.** Those who have seen this variety exhibited at New York and other Eastern exhibitions well know what a beauty Mr. Waite has given us. It is without doubt the finest clear pink we have, and if slightly thinned can easily be grown on four feet stems. If you do not already grow this fine variety you surely want it 1.50
- Jersey's Sovereign.** A shade of color that few can describe. According to Ridgway's chart it is salmon-orange. A very vigorous grower with dark foliage which is resistant to the leaf hopper. A splendid cut flower 2.00
- Jersey's Ideal.** The color of this variety is best described as a lavender pink, although sometimes it is nearer lavender. The flowers are usually borne face up on the stem and the petals drooping gracefully down make a very deep and massive bloom. It is a vigorous grower, a very free bloomer and has an ideal stem 5.00
- Judge Marean.** This, as the name implies, is one of the finest of the Marean varieties. It is a combination of salmon pink, red, yellow, and gold. A very large flower, profuse bloomer, very early, and stands erect on fine stems 1.00
- Junior.** This monster deep lavender hardly needs any description for its immense size makes a welcome addition to all exhibitions 1.00
- Lavendula.** This is one of the best real, clear lavenders. A strong grower, large, and the best of habits 5.00
- Le Grand Manitou.** Ground color white, striped and splashed violet rose, but sometimes runs to the solid color when it is a beautiful clear violet rose. Large and striking flower35
- Marmion.** This flower is of such enormous size and great depth, and looks so massive among the surrounding dahlias as to dwarf them all. The long can-like stem holds the huge bloom well erect. Color is pure golden yellow with bronze suffusions on reverse of petals 7.50
- Margaret Woodrow Wilson.** An exhibition decorative of immense size and wondrous beauty. The fact of the petals is creamy white with a reverse of phlox-pink, giving an opalescent effect. One of the best late introductions 4.00

- Margaret Masson.** Wonderful exhibition variety of a beautiful silvery pink. Great depth and size. Flowers are produced abundantly on very rigid stems. A fine keeper when cut 2.50
- Mrs. Carl Salbach.** An immense mauve pink Decorative held on extra long, strong stems 75
- Mrs. I. de Ver Warner.** This is a variety which is entirely distinct from all existing sorts. The color is soft orchid pink throughout. It is a monster in size and is borne on long, stiff stems. As an exhibition flower either on long or short stems, it is unexcelled. We have the true stock 1.00
- Mordella.** A truly artistic dahlia of beautiful apricot buff, being particularly effective for house decorations. Flowers average 9 inches across and are held well above the foliage on extra long stems 2.50
- Myra Valentine.** A large bronzy bloom, having every good habit that the most discriminating grower may desire. Color is rich golden bronze with apricot suffusions 1.00
- Nobilis.** A fine fancy variety of brilliant scarlet with white edges 1.50
- Old Black Joe.** A dahlia to bear this name must, of course, be very dark. It is deep purplish crimson with a faint dusting of silver which is more pronounced on the reverse of the petals. Free blooming, on wiry stems 2.00
- Paul Michael (California Gold).** A pure old gold flower which can be grown to a wonderful size. Has been awarded many prizes for the largest bloom 75
- Paul Revere.** We think this big, deep crimson is the best of its color to date. The blooms are large and of a wonderful depth 3.50
- Patrick O'Mara.** A fine, large, stiff stem variety of an unusually soft and pleasing shade of orange buff slightly tinged Neyron rose. A rare Autumn shade which will be in demand particularly as a cut flower variety 75
- Peacock.** Another bi-color which attracted much attention in our garden last season. The purplish crimson blooms being striped and spotted white, making what we think is the best of these two-color arrangements of which there are new several very similar on the market 2.00
- Purple Manitou.** A fine, large, clear, violet purple, being a sport of Le Grand Manitou 35
- Primula Rex.** Another welcome addition to the giant type. The name "King of Primroses" very nicely describes the color, which is primrose or light cream throughout. The flowers are massive and freely produced 5.00
- Princess Pat.** This is a charming flower of old rose. Early in the season the petals will be splashed red. Blooms are large

and carried on excellent stems75
Pond Lily. There are several varieties on the market by this name. This is the one which our good friend N. Harold Cottam has shown so beautifully the past two years. The color is a very soft and pleasing one, being creamy white with delicate shadings of soft peach pink. A dwarf grower and free bloomer	2.00
Pride of Connecticut (66). We feel that in offering this new variety we have one which will soon prove its value both as a commercial cut flower variety as well as for exhibition. The color is for the most part deep glowing pink with the reverse of each petal changing to a light amaranth pink. The plants are dwarf to medium in height and are completely loaded with blooms from early until late. The stiff, wiry stem holding the flowers well out from the foliage. We use this extensively for cut flower work not only because of its pleasing color, but it is a fine keeper when cut, and the stem is quite adapted to this purpose without the use of wire. Certificate of Merit A. D. S.	1.00
Pride of Stratford. A large two-tone orange variety with a very deep reverse. Long, sturdy stems and a free bloomer	5.00
Purity. Very reliable, free blooming white50
Queen of the Garden Beautiful. An immense flower of soft primrose yellow. One of the outstanding new California varieties	5.00
Radio. One of the largest bi-colored varieties, having a base color of blood red with yellow tips and streaks of yellow running through the petals. The mammoth flower stands perfectly erect on a fine stem	2.00
Ralph H. Blodgett. Do you wish something new and entirely distinct from other varieties? If so, try this. The ground color is deep orange with a slight red suffusion and each petal is tipped white. Large size and free bloomer75
Robert Treat. The beautiful American Beauty Rose color instantly attracts ones attention to this variety. This, with many other good qualities make it one of the most outstanding new varieties. Plants are of profuse blooming habit, size is large, and stems are long and strong	1.50
Robert Scott. A very beautiful apricot yellow with rose shadings. Large, well-formed flowers, long stems, and a free bloomer	3.50
R. T. Edwards. A huge bloom of a peculiar opalescent pink with a silvery overcast. Heavy, sturdy stems, and no doubt one of the best Harding productions	5.00
Rosa Nell. A flower of an unusual shade of clear rose pink, size is large, and the stem is of the best75

Rose Fallon. A giant old gold bloom of great depth and size, borne on fine, heavy stems	5.00
Sagamore. This autumn shaded giant has become a great favorite since its introduction in 1925, and is always in demand in the cut flower market. Its bright gold color with just a faint tint of salmon make it indeed an outstanding variety. Needless to say, it is large and has a very good stem	2.00
Sequoia Gigantea. Very large deep butter yellow75
Shelikoff. A fine, rich garnet of great substance and long, strong stems, free blooming and very valuable as a cut flower50
Snowdrift. It is of the clearest white, stem is long and stiff, and is also a very good bloomer50
Susan Lee. A mammoth exhibition bloom of flame red with golden tips	1.00
The Bashful Giant. This fellow is never bashful on the exhibition table, but always stands right out in the very front row, as it is one of the very largest varieties we grow. The color is apricot, with golden and salmon pink shadings	1.00
The General. A deep garnet flower which shows a slight sliv-ery reverse, the combination forming a blossom of remarkable beauty and charm	3.00
The Millionaire. A giant lavender pink. One of the largest, very prolific and is fine for exhibition50
The Red Planet. A large, broad petal bloom of clear cerise with just a slight touch of yellow on the edge of each petal	1.00
The Seal of Connecticut. We regret that we must withdraw this from the market for the present. We unfortunately planted our stock of it on a low piece of land, and the heavy storms kept the roots covered with water nearly the entire summer.	
The U. S. A. This is a mammoth deep orange variety partaking somewhat of the Hybrid Cactus class. It is a very prolific strong growing variety, and if disbudded its size and beauty know no bounds	1.00
The World's Best White. Here is a variety that combines all the good habits that are so seldom found in pure whites. Plants are strong, thrifty growers and bear big blooms freely from early to late	3.00
Trentonian. A giant decorative of a shade that instantly appeals. The color is a blending of old gold, amber and coppery bronze. Broad heavy petals making a flower of fine keeping quality	2.00
Wanda Miller. This variety very much resembles "Our Country" in color but is much improved by having a good, erect stem. The color is deep violet with a stripe of white running through each petal	5.00
Wesley Hayes. A variety somewhat similar to Jersey's Beacon	

but a deeper red. For the most part it is a rich blood red tipped and edged golden yellow. Large and an excellent keeper and bloomer 3.00

W. J. Erwin. No doubt this is one of the best lavender purple varieties on the market. Rigid stems and large size 5.00

White Glory. This white seedling of Glory of New Haven was introduced by us in 1923, and still holds its place among the good whites. Rugged grower, an early bloomer, and large size 2.00

Winfield Slocombe. Very few varieties can compare with this for freedom of bloom. The plants are dwarf in growth and the large blooms seem to almost hide the ferny foliage of the plants. The color, too, is very attractive, being a brilliant golden orange, which is very alluring at all times but more especially under artificial light 2.00

Wm. Slocombe. The color is creamy yellow or light primrose, and may be grown to a giant size, also a very free bloomer50

Wonderland. This is one of the most distinct Dahlias both as regards form and color. Blooms are very large and composed of many long curled and twisted petals the face of which are violet carmine with a silvery reverse giving a handsome two-tone effect 3.00

Yale. We placed this on the market at the insistent demand of many of our friends who saw it growing in the garden. It is a combination of deep violet purple and white, with many variations in the white markings, no two blooms being alike. Medium size, free flowering, but the stems are inclined to curl 1.00

GIANT HYBRID CACTUS DAHLIAS

Adda Patterson. We believe this long-looked for real clear white dahlia of satisfactory habits. The blooms resemble a huge, shaggy chrysanthemum rather than a dahlia. The stems are long and rigid. The color is the clearest snow white, and it is a fine, free bloomer 5.00

Alexander Pope. A giant hybrid of remarkable depth, often six inches. It has a long, rigid stem and unlike many reds does not burn in the sun. Color is a deep crimson with a magenta reverse and an almost black center 5.00

Bridal Veil. Large, profuse blooming waxy white75

California Enchantress. Delightful shade of light pink with creamy white suffusions. The plants are free blooming on the best of stems50

Cigarette. A Dahlia which attracts much attention because of its oddity of color. The ground color is creamy white, heavily edged brilliant orange or flame. Blooms are large, stem is long and rigid and is a very fine bloomer 1.50

- Colleen Bawn (Kernan 102).** We have many giant varieties in the Hybrid Cactus class, but this overtops them all. The immense size not alone commends it, for the color too is extraordinary, being a deep clear pink throughout without shadings of any kind. If you intend to make any competitive exhibits this year you surely want this one 2.00
- Daddy Butler.** The ground color is of the American Beauty rose shades or rosy carmine, being lighter on the reverse. Has a very strong, wiry stem and lasts well when cut 1.00
- Edith Slocombe.** A true Hybrid Cactus, finely formed flowers carried on long, wiry stems of a wonderful shade of rich purplish-garnet or shaded velvet-maroon. The twisted and curled petals showing this beautiful combination of colors make this an unusually attractive variety 2.00
- Elsie Daniels.** This fine new variety excites admiration wherever shown. The long, shaggy outer petals are an attractive light orchid shade, shading toward the center to a clear, creamy white. The blooms are borne on top of a fine rigid stem 3.50
- Emma Marie.** A favorite Hybrid because of its pleasing shade of clear pink with a creamy white center, and its combination of exhibition and commercial qualities not found in many Dahlias. Robust grower and bears its blooms on a splendid stem 2.00
- Francis Lobdell.** A very stiff stemmed, low-growing variety. Color is mallow pink shading to white in center 1.00
- Gee Whiz.** This is an extraordinary large variety and for exhibition will prove indispensable. The color is a soft buff shaded salmon. The large flowers, which never show a center, are held well aloft on fine, strong stems75
- Geo. Walters.** An enormous Hybrid Cactus. The color is pinkish salmon shading to yellow at base. Plants are strong growers and have every good habit. Highly recommended75
- Gladys Sherwood.** As compared with other whites this is a giant among pygmies. Flowers will grow 9 inches in diameter without disbudding. It has fine stems75
- Harry, Sheldon, Jr.** Large, spreading blooms of delicate lavender pink shading to white in the center. The wonderful size and beautiful shadings of this variety make it a welcome addition to any exhibit 2.00
- Jean Chazot.** Another fine flower of the popular Autumn shades. The color for the most part being golden bronze, with slight red suffusions. Blooms abundantly on heavy, wiry stems75
- Jersey's Radiant.** Bittersweet orange, large flowers produced on long stems. An attractive and much admired variety 2.50

- Judge Duncan.** A new variety which we can recommend as being an all around good Dahlia. It is one of those sorts which have a dark stiff stem and keep so very well when cut. The color too is very desirable, being deep crimson shading to rich velvety maroon in the center50
- Kalif.** Pure scarlet, gigantic flowers produced on stout stems. An old variety, but one that can compare very favorably with the latest introductions50
- MacGregor.** The fine, clean growing, free-blooming habits combined with its brilliant, clear, spectrum red color make this one of our best varieties, both in the garden and on the exhibition table 1.00
- Mariposa.** The color is lovely clear pink, deepening in the center, veined and suffused faint violet. It is a giant in size, being composed of many long, curly, incurved petals 1.50
- Marian Broomall.** Mammoth pink and white hybrid. Erect stem and a good bloomer. One of the most admired varieties in our garden. Plants only 2.50
- Mephestophles.** A dahlia that differs from the ordinary run by the fact that it has but very few lateral shoots. The stems are extremely long and very erect. The flowers are very large and are placed right on top of the stem. Color is ruby red with a golden tip on each petal 1.00
- Mrs. Ethel F. T. Smith.** This is the largest Dahlia I have ever grown, having blooms over 10 inches in diameter. The color is creamy white, shading to lemon yellow in the center. A profuse bloomer on long, strong stems75
- Mt. Shasta.** Very light shell pink with slightly deeper shadings through the center of the petals, also showing a slight tinge of yellow on edge of petals. A fine, large, deep flower50
- Nibelungenhort.** Immense flowers, 7 to 8 inches across. Color rich golden apricot suffused old rose. Very free75
- Pappillon.** Old rose with golden shadings. The size is large, and it is a wonderful bloomer on good stems 2.00
- Paradise.** This is a very much improved Geo. Walters, which, to our mind, is sufficient recommendation for any Dahlia. The color is a bit deeper, being old rose suffused with gold. Has a very fine, erect stem 2.00
- Peppermint Candy.** Dahlia fanciers are always looking for something extraordinary and unusual. The name of this new hybrid cactus gives quite a unique description of this odd variety which is creamy white with many crimson stripes and splashes. It is large size and a very free bloomer, but we regret to say that the stem is not heavy enough to carry the large blooms 1.50

Rollo Boy. We consider this one of the best new varieties which we had in our trial gardens last year, and the vase of it which we had at the New York show excited much admiration. The color is deep golden yellow, shading to old gold. It can be grown to a wonderful size, and has fine, long, erect stems	2.00
Talisman. Here is a bloom of rather a new combination of colors, being a brownish red with a reverse of tan. The petals incurve slightly, showing the tan reverse which gives the effect of tipped and edged gold. A fine, thrifty grower that bears large blooms freely	1.00
Violetta. The rich pentunia violet color, and the strong, erect growth of this variety make it a favorite with all who grow it. The formation is that which some of our Western friends term American Cactus, the petals being somewhat more tightly rolled than the usual Hybrid	2.00
Washington City. A very large Hybrid of pure white which produces a long succession of fine blooms on excellent stems75
Wizard of Oz. One of the largest Dahlias grown. The color is glowing amber pink	2.50
Wodan. Salmon rose shading to old gold. Bold, large but not coarse flowers50
Zante. One of Bessie Boston's best, and, of course, a big one. Has a heavy, rugged stem which holds the large deep flowers so that it looks you right squarely in the face. The color is gold, suffused with apricot pink	2.00

SELECT PRIZE WINNING CACTUS DAHLIAS.

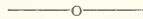
Ambassador. Undoubtedly the best variety we have of this class. Has many fine, large blooms on long, erect stems. The color is soft yellow with shadings of salmon pink	1.00
Ballet Girl. A new Cactus of the "Fellows" type, being large sized and remarkable free blooming on good stems. The ground color is orange, often tipped and marked with white75
Etendard de Lyon. Rich carmine rose, or royal purple, with suffusions. An all around good variety50
Farncot. This little purple and white tipped variety will produce more blooms per plant, and last longer, than any other variety we know. We regret that owing to heavy garden sales we can offer plants only	1.00
F. W. Fellows. Bright orange scarlet. Flowers freely produced and are of exceptional size. Very wiry50
Gladys Bates. This is a flower which is classed in California as an American Cactus: the petals being of a slightly coarser formation than the true Cactus type. Immense, heavy blooms of incurved petals of tan with reverse of rose. Perfect form,	

closed center, long, straight stems, and a profusion of blooms	1.00
John Riding. Deep crimson. Very much incurved. A fine exhibition variety75
Guardian. Prolific, strong stem, free blooming crimson. Nothing better in a red cactus50
Melody. Pure yellow for half the length of the petals and the remainder pure white. A strong grower and a free bloomer	.50
Meridian. It is not often the American grower is able to offer a cactus of the true slim petal type. This variety has the added advantage over the British productions, it having a very erect stem. The colors are extremely delicate being creamy pink, deepening at the tips to a soft blush	2.00
Mrs. Edna Spencer. This is a Dahlia which can be particularly recommended for cutting as the flowers have wonderful keeping qualities, and stand erect on the best of stems. The color is also very pleasing, being a delicate lavender shading to white75
Miss Frances White. Pure white, free blooming and incurved	.50
Mrs. Alfred Harvey. A fine, free blooming variety of wiry stem and growth. The color is bright salmon pink with darker shadings at base	2.00
Pierrot. Deep amber, boldly tipped white. An exceptionally large and striking variety50
Pink Abundance. A flower composed of many fine florets. Color mallow pink with white shadings. Certificate of Merit, A. D. S. 192075
Old Bill. A sturdy growing, stiff-stemmed crimson. The flowers stand erect, and last well when cut. Size is large	2.00
Prima Donna. A fine, large flower of the incurved type, color is creamy white at base with tips of lavender pink35
Regent. A lovely clear pink incurved variety which we can highly recommend. Prolific flowering, good size and stem ..	1.00
Silverhill Park. A large, pure white of the highest type of incurved Cactus. One that is highly recommended by the introducers	1.00
Valiant. A grand exhibition Cactus of brilliant crimson. Good stem. Form, perfectly incurved. Very large	1.00

SELECT PRIZE WINNING PEONY DAHLIAS.

Albert Ward. An exceptionally large bloom, well formed and free flowering. Good stems. Color deep purple	1.00
Black Beauty. Very large, rich maroon, shaded black. Good for garden or exhibition	1.00
Chanson. A very full and deep Peony of rather an unusual shade of deep lilac with a blueish sheen. Fine producer50

City of Portland. There is a great demand for large flowers and this is large enough to satisfy most anyone. The color is a fine, clear yellow, and the stems are long and stiff	1.00
Cleopatra. Large blooms of deep amber with a reverse of a peculiar orange shade, making an unusual color effect50
Elizabeth Boston. This huge yellow and red peony is too well known to need description. No doubt one of the most satisfactory of this type	2.00
Ethel Hardy. This is one of the finest rose buff peony dahlias grown. It is extra large, has good stems, and is very useful for exhibition	1.50
Holman Hunt. A fine free blooming rich crimson which can always be relied on for cut flowers50
Miss Martin. This is one of the largest peony flowers grown to date. It is of perfect form and has very long stems. Color is garnet	1.50
Miss Leota Cota. A more beautiful blending of creamy buff and pink would be hard to imagine. The flowers are enormous, coming 10 inches or more in diameter50
Mrs. John Bray. A most distinctive fancy Peony. The ground color being purplish maroon with many white stripes and splashes. Flowering habits are all good; blooms early and constant	1.00
Pearl Ruggles. One of the largest and most exceptional colored Peonies. The color is carmine rose suffused with cerise pink, and white at the base of petals. A free bloomer on long stems	1.00
Uncle Sam. Here is a giant bloom which you surely want. It is a long stiff stemmed variety of brilliant copper color, and full deep formation. We believe it to be the largest Peony grown	1.50



SHOW AND HYBRID SHOW DAHLIAS

Anna Rehorst. A large, fine hybrid of the deepest purple50
Cuban Giant. Bright maroon. Large25
David Warfield. Cherry red. A decided acquisition75
Dreer's White. Clear snow white. Large25
Estelle Christy. The best yellow Show Dahlia I have ever grown. Flowers are extra large, and are borne on stiff rugged stems. The color is a bright lemon yellow	1.00
General Miles. An enormous Fancy Show Dahlia. The ground color is light violet striped and spotted with purplish magents. A Show Dahlia of exceptional merit	1.00

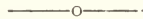
Golden Opportunity. A large flower of rich golden bronze. Plants are strong, thrifty growers75
King of Shows. Deep butter yellow of a solid color throughout. Every petal is most perfectly quilled and uniquely formed. A mammoth flower on long stems	1.00
Maud Adams. A perfect snowball with faint lavender blush on tip of petals. Very desirable for cut flowers35
Miss Helen Hollis. A gigantic deep scarlet flower. The best of the red Show Dahlias35
Mrs. C. D. Anderson. This might be called an improved Cuban Giant. It is a rich purplish crimson, and bears large flowers freely on the best of stems50
Mrs. Hyde. A hybrid show form of Mrs. Warner, the colors being the same beautiful orchid, but the blooms are of a different form	1.00
Mrs. Mary Bowman. An exquisite shade of deep golden yellow with the reverse of petals slightly tinged magenta. A strong thrifty grower in every respect50
Norma. Orange buff. Very attractive25
Purple General Miles. A solid color sport of General Miles. Clear violet purple throughout	1.00
Silva Quarta. This huge lavender ball attracted much attention in our garden. The size not only is large, but is composed of innumerable tightly quilled petals, one inside of the other	2.00
Supt. Amrhyn. This new pink invariably wins the prize when exhibited in the show classes. It is of good size, will last extremely well when cut and has a fine, stiff stem	1.00
Vivian. A very beautiful and a favorite Show Dahlia. The base of the petals is white distinctly edged carmine25
Yale Bowl. A waxy golden bronze bloom, perfectly quilled, and holds its center until the end of the season	1.00

SELECT POMPON DAHLIAS

Amber Queen. Fine, deep amber with apricot suffusions25
Belle of Springfield. Very diminutive brick red35
Bronze Beauty. Rich golden bronze25
Dee Dee. Decidedly good. Small, well-formed lilac50

THE WORLD'S MOST SELECT DAHLIAS, 1928 17

Jessica. A diminutive variety of amber and salmon with just a tint of red25
Lassie. Yellow base with rose band and tip on each petal50
Lilac. Golden yellow background, pinkish lilac face. Prolific bloomer50
Little Mabel. Amber shaded apricot. Very free25
Little Prince. Crimson, each petal being tipped white35
La Petite Barbara. Well known pure white35
Little Jennie. Primrose yellow25
Phyliss. Yellow shaded and edged red35
Raider. A new English Pompon of the most refined exhibition type. Color is light creamy yellow, size medium to small75
Rosalia. Yellow, with edging of crimson25
Snowclad. The most reliable pure white25
Yellow Gem. Fine canary yellow with good stems50



SPECIAL OFFERS.

To those who are not conversant with the various varieties, I recommend the following collections:

If you wish something different than is mentioned below, advise me of your wishes and the amount you desire to spend, and I will be glad to make the selection for you. If the selection is left entirely to me I will guarantee at least 25 per cent. additional value at catalogue rates.

For \$1.25 I will send 12 tubers, unnamed; 30 for \$2.25. These are all first class varieties that have become mixed in handling.

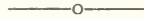
For \$1.25 I will send 12 good garden and exhibition varieties, my selection, no two alike.

For \$2.75 I will send 12 Pompons, my selection, no two alike.

For \$10.00 I will send 18 of the best exhibition varieties, my selection, no two alike.

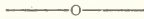
For **\$10.00** I will send 12 Decoratives, my selection. The varieties which we supply in this collection, if bought separately, would sell for \$15.00 or more.

We have changed our arrangements of former years and are now sending these collections postpaid in the U. S. A.



TIME OF SHIPMENT AND PLANTING

I do not recommend planting in this climate until the latter part of May, and to insure a long succession of bloom, planting should be extended until the latter part of June. I start shipping around April 1st, and orders are filled in rotation as received, but if customers will kindly state at what time after that date they would like to receive them I will try to ship them as near the date requested as possible.



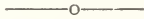
DAHLIA LABELS

Many of our friends find it difficult to secure proper labels for use in their gardens. We can supply copper wired tree labels the same as we use in our own gardens as follows. The prices, however, do not include postage unless shipped with a tuber order.

25c per 50

40c per 100

\$2.75 per 1000



DAHLIA SEED

The growing of Dahlias from seed is very fascinating for you never know what a seed will produce and each plant is a new variety. The seed should be planted in the house or a cold frame during late March or early April and transplanted to the garden when the weather is suitable, usually about the middle of May. We have a limited amount of our own seed which we can supply at \$1.00 per package.

We have also made arrangements with a well known California grower for a limited amount of Western grown seed which we can also supply at \$1.00 per package.

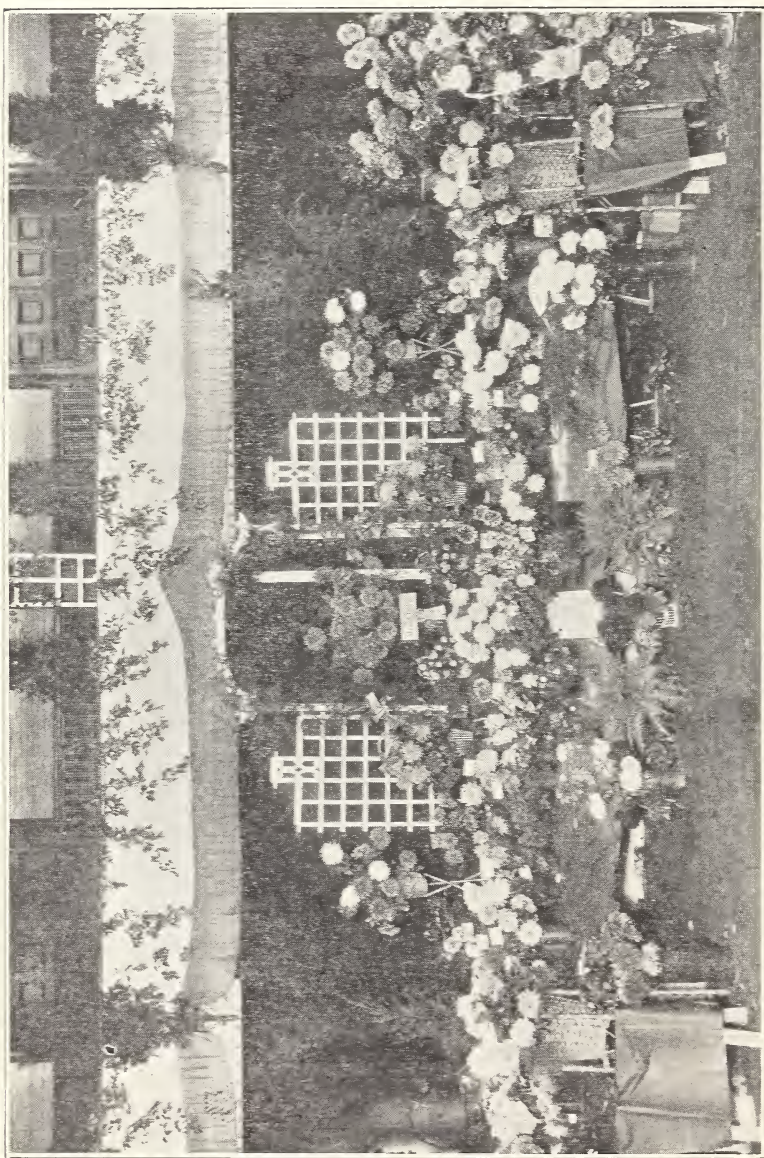
JOIN THE AMERICAN DAHLIA SOCIETY

A real, live Society organized in the interest of the Dahlia. Membership fee \$2.00 per year, which includes subscription to a very interesting quarterly Bulletin, also season ticket to the big annual show. For further particulars apply to Wm. J. Rathgeber, Sec'y, 198 Norton St., New Haven, Conn.

GLADIOLUS

Gladiolus are a very satisfactory summer flower, being of easy culture and will succeed in most any soil. We do not offer a large selection, but the following are some of the best medium-priced varieties:

- Albania.** The best pure white. 15c each. \$1.50 per doz.
 - Evelyn Kirtland.** Rose pink with a scarlet blotch. A good, reliable standard. 07c each. 75c per doz.
 - E. J. Shaylor.** Deep rose pink. Large blooms. 10c each. \$1.00 per doz.
 - Golden Measure.** Golden yellow. Fine, tall spikes. 15c each. \$1.50 per doz.
 - Halley.** Salmon pink. Early, and a standard cut flower variety. 05c each. 50c per doz.
 - Mrs. Dr. Norton.** Silvery white tinged pink. One of the most admired. 10c each. \$1.00 per doz.
 - Myra.** Yellow and salmon. One of the best of the Primulinus type. 05c each. 50c per doz.
 - Princess of Orange.** Vermillion with white stripes. A fine variety which should be better known. 08c each. 75c per doz.
 - Scarlet Princes.** A fine massive scarlet. 10c each. \$1.00 per doz.
 - The Pearl.** Light pink and cream. A fine, graceful and early variety. 10c each. \$1.00 per doz.
 - Violet Beauty.** Cerise-violet with red blotch. Large spikes, and one of the best of this color. 20c each. \$2.00 per doz.
- General Mixture of all varieties including Primulinus Hybrids,**
 .50 per doz.
- Choice Mixture of the best large flowered varieties \$1.00 per doz.**



Our Gold Medal Exhibit at the Annual Exhibition of the American Dahlia Society, September, 1927, in New York City



