

## **Historic, Archive Document**

Do not assume content reflects current scientific knowledge, policies, or practices.



# COMMERCIAL 'MUMS

LIBRARY  
RECEIVED  
MAR 1 1930 ★  
U. S. Department of Agriculture.



1  
9  
3  
0

1  
9  
3  
0

DOROTHY TURNER. See page 9.

## ROMAN J. IRWIN

INCORPORATED

*Plants • Cuttings • Bulbs • Seeds*

43 W. 27th St., New York, N.Y.

Phones: BOGardus 2444-2445-2446

# Important Information



**I**N order to help our customers, we have tried our best to make up this catalog as complete as possible—giving height, when to take bud, and flowering date wherever possible. We gladly send you any advice on best varieties to plant, etc.

We advise well-rooted cuttings in place of 2 or 2¼ inch pot plants. They are more practical and cost less; besides they are much easier to ship. It is a great advantage to order early before the hot season, when the cuttings are likely to heat in transit in a few hours. If 2¼ inch pot plants are wanted, add \$2.00 per 100, or \$15.00 per 1000 to the price of rooted cuttings.

We recommend all shipments to go by express, except very small shipments which can be readily mailed. Claims cannot be collected when cuttings are shipped through the mail, hence we recommend express, because a claim can be entered for damages through delay, etc. We mail small quantities only up to May 1—it is unsatisfactory to mail cuttings when the warm weather sets in.

**Postage.** 100 cuttings, add 15c. extra for postage. For each additional 100, add 5c. more. For *Special Handling Service* (which we highly recommend), add 25c. for each shipment—it's worth while.

**Claims for Damages.** You must enter a claim against the express company immediately. According to law, the transportation companies are the agents of the buyer and when goods are delivered to and accepted by such agencies, the shipper's responsibility ceases. We will, however, gladly assist you in making your claim if you advise us.

**Prices** on Rooted Cuttings listed in this catalog are subject to change without notice—also subject to crop failure.

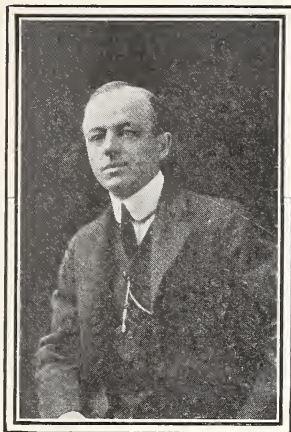
*We sell 250 of a variety at the 1000 rate; less than 100 of a variety, add 10% to 100 rate. No orders for less than 25 of a variety.*

**Terms.** 60 days net, less 2% cash in 10 days, or less 3% cash with order. *Postage and express charges must be paid by the customer.*

**Non-warranty.** We endeavor to send out only the very best quality of cuttings, plants, bulbs, seed, etc., and do our utmost to assure you of stock true to name, although we do not guarantee this. Neither do we in any way guarantee the success of the grower purchasing the stock offered in this catalog. In the event of stock not being true to name, our liability is limited to the invoice value at the time of shipment. If our goods are not accepted on these conditions, no sale is made thereof and you must return goods at once.

**ROMAN J. IRWIN, INC.**

## Practical Experience to Our Customers



The writer has had 39 years of practical experience, 5 years in greenhouses, 14 years in the Seed and Bulb Trade, and now 19 years in business for himself.

For the past 25 years, I have regularly attended the Flower Shows and Conventions, meeting most of the growers, swapping ideas as to what to grow in the best varieties, etc.

What I have gathered from these contacts is always at the disposal of our customers.

Your inquiries appertaining to your problems as to the best commercial varieties to grow are welcome and will have my careful and personal attention.

ROMAN J. IRWIN, Inc.

### "Mum" Hints

**Don't** plant early varieties late and expect early flowers.

**Don't** plant early varieties in solid beds and think you will be first on the market.

**Don't** think you can plant in solid beds and secure as high percentage of perfect blooms as you can on raised benches.

**Don't** select early buds on late varieties, the best flowers come from the late ones.

**Don't** take late buds of Unaka, Chrysolora, Marigold if you desire early flowers and avoid the open centers.

**Don't** plant late, and be sure the soil is not too rich. This will prevent blind growth on such varieties as Bonnaffon, Christmas Gold, Yuletide, etc.

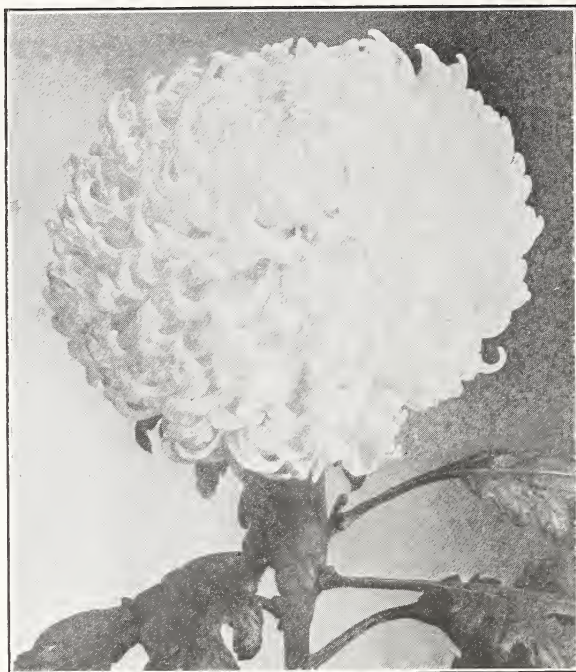
**Don't** permit insects to infest your stock; remember an ounce of prevention is better than a pound of cure.

### Selection of Buds in Mums

Usually the second crown and terminal bud produce the best flowers.

The crown buds are earlier and appear among leaf shoots (not buds). These generally give a bigger flower with more petals, but not so intense in color as those from a terminal bud.

The terminal bud comes later and is surrounded by other buds. The terminal bud is the last bud the plant will produce. It is best because it produces a flower with more intense color and better foliage. The flowers are smaller and at times not as double as from the crown bud.



CHATTANOOGA, BEST LATE WHITE

## CHRYSANTHEMUMS

### *Rooted Cuttings*

## Large Flowering White Varieties

### THE CHADWICKS

We can assure entire satisfaction with our strain of Chadwick mums. There are no better. We offer white, pink, yellow, and bronze.

**\$5.00 per 100, \$45.00 per 1000**

Name and Description	H'ght	Select Bud	Matures	Price	
				100	1000
<b>Betsy Ross.</b> White, incurved, midseason..	4'	Aug. 25 (from June planting)	Nov. 5	\$4.00	\$35.00
<b>Chadwick Improved.</b> Pure white.....				6.00	55.00
<b>Chas. Rager.</b> White, incurved, midseason.	4'	Aug. 20	Nov. 1	4.00	35.00
<b>Chattanooga.</b> Pure white, superior to Towitz. Best commercial late white...	4'	Sept. 20	Thanksgiving	5.00	45.00
<b>Crystal Dome.</b> Large commercial incurved white.....	4'	Late crown	Nov. 5-15	5.00	45.00
<b>Crystal Queen.</b> Early white, improvement on Smith's Advance. Plant May 15...	4'	July 15-20	Sept. 23	7.00	65.00
<b>December Beauty.</b> White with light pink shadings, massive incurved, late flowering, avoid early buds.....	3½'	Sept. 30 to Oct. 10	Dec. 10 and later	5.00	45.00



SILVER SHEEN, BEST EARLY WHITE

## Large Flowering White Varieties—Continued

Name and Description	H'ght	Select Bud	Matures	Price	
				100	1000
<b>December Gem.</b> Large incurved, late flowering white, slight pink tinge.....	3½'	Sept. 25	Dec. 1 and later	\$5.00	\$45.00
<b>December Glory.</b> Large incurved, late flowering, fine pure white.....	5'	Sept. 30 (from June planting)	Dec. 1-30 and later	5.00	45.00
<b>Early Frost.</b> Early white.....			Oct. 15	4.00	35.00
<b>Early Monarch.</b> Largest pure glistening white to mature Oct. 10.....	4'	Aug. 15-20	Oct. 10	15.00	140.00
<b>Early Snow</b> .....			Oct. 20	4.00	35.00
<b>Edgar Stillman Kelly.</b> Larger and stronger than Betsy Ross, pure glistening white.....		Sept. 5	Nov. 15	4.00	35.00
<b>Favorite.</b> Improved white incurved.....		Sept. 5	Nov. 10	4.00	35.00
<b>Josephine Foley.</b> Fine pure white, mid-season.....	4'	Aug. 25	Oct. 25	4.00	35.00
<b>Lynwood Hall.</b> Large white.....		Sept. 10	Nov. 15	4.00	35.00
<b>Margaret Graham.</b> New, very fine, incurved, snow white.....	4'		Nov. 15	12.00	100.00
<b>Mefo.</b> Incurved, creamy white, slight traces of pink.....	4'	Sept. 15	Nov. 20	6.00	50.00
<b>Miss Chicago.</b> White, incurved.....	5'	(Terminal) (from early June planting)	Nov. 10-15	7.00	65.00
<b>Mistletoe.</b> Blush white, one of the latest.	4'	Sept. 30	Dec.	4.00	35.00
<b>Monument.</b> Incurved white.....			Nov. 5-15	5.00	45.00
<b>Mrs. Henry Robinson.</b> Incurved white.....				4.00	35.00
<b>Oonto.</b> Incurved, midseason white.....		Aug. 25	Oct. 10-15	4.00	35.00
<b>Quaker Maid.</b> Large white.....		Aug. 25-30	Oct. 15	4.00	35.00
<b>Silver Sheen.</b> Pure white, incurved.....		Aug. 30	Oct. 20	4.00	35.00
<b>Smith's Advance.</b> Earliest white.....	3½'	Aug. 5	Early Sept.	4.00	35.00

## Large Flowering White Varieties—Continued

Name and Description	H'ght	Select Bud	Matures	Price	
				100	1000
<b>Smith's Challenger.</b> Superb incurved white. Similar to December Glory but larger.....	4½'	Sept. 20	Last of Nov.	\$7.00	\$65.00
<b>Smith's Imperial.</b> White, best incurved.....	4'	Aug. 25	Oct. 20	5.00	45.00
<b>Smith's Late White.</b> Perfect globular form, very late.....	.....	Sept. 30	Dec. 15 and later	5.00	45.00
<b>Snowbound.</b> Incurved white.....	.....	.....	Oct. 25	4.00	35.00
<b>Snow White.</b> Incurved, best commercial white.....	.....	.....	Nov. 1	4.00	35.00
<b>Tom Browne.</b> A wonderful pure white. Blooms 8½ in. are not unusual. Heavy stem.....	4'	Oct. 5	Nov. 20 to 30	15.00	140.00
<b>Towantic.</b> Large, incurved, pure white late; plant no earlier than third week of June.....	3½'	Sept. 15	Nov. 25 and later	4.00	35.00
<b>Victory.</b> Pure white, incurved, late.....	3'	Sept. 10	Nov. 10	5.00	45.00
<b>W. H. Chadwick.</b> White.....	3½'	.....	Nov. 15 and later	5.00	45.00
<b>White Chief.</b> Good commercial incurved white. Follows Quaker Maid.....	4'	Take terminal bud	Oct. 18	25.00	200.00
<b>\$5.00 per doz.</b>					
<b>White Chieftain.</b> White, incurved, standard; sort of Chieftain; fine for pot culture.....	4'	Aug. 30	Oct. 25-Nov. 5	4.00	35.00
<b>White Helen Frick.</b> Late white.....	3'	Sept. 10	Nov. 15	4.00	35.00
<b>White Ivory.</b> White, commercial variety.....	.....	.....	.....	4.00	35.00
<b>White Patty.</b> Late flowering.....	.....	.....	Nov. 1	5.00	45.00
<b>White Perfection.</b> Sport of Rose Perfection, showing faint pink.....	3'	Sept. 10	Early Nov.	5.00	45.00
<b>White Prince.</b> Midseason, close incurved, compact, white wax-like color.....	4'	.....	Nov. 1	4.00	35.00
<b>White Seidewitz.</b> Late incurved, sport from E. A. Seidewitz.....	5'	Sept. 5	Nov. 20	4.00	35.00
<b>White Surprise.</b> Late flowering.....	4-4½'	Sept. 20	Nov. 15	5.00	45.00
<b>William Turner.</b> Large white.....	.....	Aug. 30	Nov. 1	6.50	55.00

## CHRYSANTHEMUMS (Rooted Cuttings)

## Large Flowering Yellow Varieties

Name and Description	H'ght	Select Bud	Matures	Price	
				100	1000
<b>Adrians Pride.</b> Bright yellow, late flowering.....	4'	Sept. 30	Nov. 20-25	\$4.00	\$35.00
<b>Celebration.</b> Yellow sport from Timothy Eaton; late flowering.....	.....	Sept. 10	Thanksgiving	4.00	35.00
<b>Celestra.</b> Yellow incurved, globular form; very fine.....	5'	Late crown or terminal bud	Oct. 12	12.00	100.00
<b>Chrysolora.</b> Incurved, fine light yellow.....	4'	Aug. 15	Oct. 5	4.00	35.00
<b>Citronelle.</b> Incurved, fine light yellow.....	.....	.....	Oct. 25	4.00	35.00
<b>Clara B. Ford.</b> Incurved like Bonnaffon.....	3½'	Sept. 20	Nov. 20	5.00	45.00
<b>Comoleta.</b> Incurved yellow.....	.....	.....	Oct. 5-15	4.00	35.00
<b>Coronna.</b> Incurved yellow.....	.....	.....	Nov. 1	6.00	50.00
<b>December Queen.</b> Standard yellow Mum.....	.....	.....	Dec. 1-10	5.00	45.00
<b>Friendly Rival.</b> Stock very scarce. A wonderful incurved golden yellow.....	.....	Sept. 10	Nov. 15-25	8.00	75.00
<b>Gladys Pearson.</b> Bronzy yellow, incurved. We have a very large stock.....	5'	Sept. 30	Nov. 25	4.00	35.00
<b>Gold Lode.</b> Clear yellow; plant early in June.....	.....	Aug. 25	Oct. 10	4.00	35.00



Large Flowering Yellow Varieties—*Continued*

Name and Description	H'ght	Select Bud	Matures	Price	
				100	1000
<b>Golden Celebration.</b> Large yellow for Thanksgiving.....			Nov. 25	\$7.00	\$85.00
<b>Golden Chadwick.</b> Yellow.....	4½'		Nov. 25	5.00	45.00
<b>Golden Glory.</b> Incurved, early, mid-season.....	4'	Aug. 25 and later	Nov. 1	4.00	35.00
<b>Golden Glow.</b> Fine, early, bright yellow.....	3½'	July 10	Aug. 15 and later	4.00	35.00
<b>Golden Glow, Improved</b> .....	3½'	July 10	Aug. 25	5.00	45.00
<b>Golden King.</b> A fine yellow, incurved....	4½'		Nov. 15-25	5.00	45.00
<b>Golden Measure.</b> Bright golden yellow, incurved.....	4'	Late crown or terminal	Oct. 20-25	5.00	45.00
<b>Golden Mistletoe.</b> Light yellow sport of Mistletoe, late flowering.....	4'	Sept. 30	Dec. 1 and later	4.00	35.00
<b>Golden October.</b> Large incurved yellow....			Oct. 10	4.00	35.00
<b>Golden Queen.</b> Bright yellow, early incurved.....	3½'	Aug. 10	Early Oct.	4.00	35.00
<b>Golden Wave.</b> Brighter than Richmond. Incurved.....	3½'	Sept. 5	Oct. 20	15.00	140.00
<b>Halliday (Robert).</b> Yellow.....				4.00	35.00
<b>Honeydew.</b> Lemon yellow.....			Nov. 5-15	6.00	50.00
<b>Improved Golden Glow</b> .....	3½'	July 10	Aug. 25	5.00	45.00
<b>Lemon Queen.</b> Lemon yellow with broad petals; incurved.....	4'	Sept. 20	Nov. 30	15.00	140.00
<b>Loyalty.</b> Late flowering, bright yellow....	4'	Sept. 15	Nov. 25	4.00	35.00
<b>Major Bonnafon.</b> Fine yellow, late flowering.....	3½'	Sept. 10	Nov. 25	4.00	35.00
<b>Marigold.</b> Dark yellow.....			Oct. 1	4.00	35.00
<b>Merida.</b> Late yellow, shading to orange....	4'	Sept. 25-30	Nov. 20 and later	5.00	45.00
<b>Midnight Sun.</b> Bright yellow, incurved, midseason, dwarf tendency; plant early June.....	2½'	Sept. 20	Nov. 1	4.00	35.00
<b>Mrs. R. M. Calkin.</b> Color similar to Marigold.....	4½'	Sept. 20-30	Nov. 25-30	5.00	45.00
<b>Mrs. C. C. Pollworth.</b> Improved Chrysolora yellow, more incurved, deeper color.....				4.00	35.00
<b>Mrs. Nellie T. Ross.</b> Light yellow, shade lighter than Bonnafon.....	4½'	Early Oct. (not before)	Nov. 30 and later	4.00	35.00
<b>My Michigan.</b> Large, bright yellow.....	Reflex Tall	Sept. 10	Oct. 25- Nov. 1	5.00	45.00
<b>Richmond.</b> Best commercial single golden yellow; midseason.....	4'	Aug. 25	Oct. 25	4.00	35.00
<b>Roman Gold.</b> Intense; midseason.....	4'	Aug. 25	Nov. 1-10	4.00	35.00
<b>Sunbeam.</b> Bright yellow, seedling of Odessa.....	4½'	Sept. 20-30	Nov. 25 and later	4.00	35.00
<b>Sunglow.</b> Bright yellow of Major Bonnafon type.....	3½'	Aug. 15	Oct. 25	4.00	35.00
<b>Sungold.</b> Seedling from Sunbeam. Bright late yellow.....	4½'	Sept. 30	Nov. 25 and later	4.00	35.00
<b>Tiger.</b> Bright yellow, midseason.....	3½'	Sept. 5		6.00	50.00
<b>Whittier.</b> Yellow, incurved like Bonnafon.....			Nov. 15 and later	4.00	35.00
<b>Yellow Frost.</b> Early.....	3½'		Sept. 15	4.00	35.00
<b>Yellow Rager (Lena Baum)</b> .....	4'	Aug. 20	Nov. 1	4.00	35.00
<b>Yellow Turner</b> Large yellow.....		Aug. 30	Nov. 1	6.50	55.00
<b>Yukon.</b> Incurved.....			Oct. 25-30	4.00	35.00

## CHRYSANTHEMUMS (Rooted Cuttings)

## Large Flowering Pink Varieties

Name and Description	Hgh't	Select Bud	Matures	Price	
				100	1000
<b>Alice Burke.</b> Pale pink; midseason.....				\$4.00	\$35.00
<b>Andrew Schmidt.</b> Sport of Seidewitz pink .....			Nov. 25	4.00	35.00
<b>Chadwick Supreme.</b> Pink sport of W. H. Chadwick.....			Nov. 25	5.00	45.00
<b>Chieftain.</b> Pink incurved; midseason....	3'	Aug. 30	Nov. 1	4.00	35.00
<b>Cincinnatus.</b> Pink; fine commercial or exhibit.....			Nov. 18-25	6.00	55.00
<b>Corneto.</b> Large, incurved, fine shipper; late flowering pink.....		Sept. 15-20	Nov. 15 and later	6.00	50.00
<b>Distinction.</b> Large, incurved, fine shipper .....			Nov. 15-20	6.00	50.00
<b>Dr. Enguehard.</b> Bright rose pink.....	4'	Sept. 5	Nov. 10	4.00	35.00
<b>Early Rose.</b> Pink.....	3'	Aug. 20	Oct. 15	4.00	35.00
<b>Seidewitz.</b> Plant July 15; late, incurved bright pink.....	5'	Sept. 5	Nov. 25 and later	4.00	35.00
<b>Glorius.</b> Pink.....			Nov. 1	4.00	35.00
<b>Glory of Pacific.</b> Early pink, fine for pot culture.....			Oct. 10-15	4.00	35.00
<b>Helen Frick.</b> Fine late, dark pink.....	3'	Sept. 10		4.00	50.00
<b>J. W. Prince.</b> Dark incurved pink sport of Pink Chieftain; midseason.....	3'	Aug. 30	Oct. 30 and later	4.00	35.00
<b>Justrite.</b> Incurved pink like Chieftain....	4'		Oct. 12 and later	12.00	100.00
<b>Lavender Gem.</b> Light lavender pink. Tall growing, so do not plant earlier than June.....		Early Sept.	Oct. 25	7.00	65.00
<b>Lustre.</b> New, lavender pink.....	4'	Aug. 25	Oct. 8	7.50	65.00
<b>McNeice.</b> Reflex pink.....			Oct. 25	4.00	35.00
<b>Miss Nettie L. Parker.</b> Pink.....			Nov. 1	5.00	45.00
<b>Mrs. J. Leslie Davis (Pink Turner).</b> Large, incurved.....		Aug. 25	Nov. 1	6.50	55.00
<b>October Rose.</b> Large incurved.....	5'	Terminal bud	Oct. 12	5.00	45.00
<b>Pacific Supreme.</b> Pink old timer.....			Oct. 10	4.00	35.00
<b>Patty.</b> Enchantress pink, also fine for pots, dwarf habit; late.....	2½'	Aug. 25	Nov. 15 and later	4.00	35.00
<b>Pink Frick.</b> Sport of Helen Frick.....				4.00	35.00
<b>Pink Ivory.</b> Commercial variety.....				4.00	35.00
<b>Pink Mistletoe.</b> Late flowering.....	4'	Sept. 30 to Oct. 15	Dec. 1 and later	4.00	35.00
<b>Pink Reliance.</b> Pinkish salmon, full, globular form.....	3'	Aug. 20	Oct. 7	15.00	140.00
<b>Pink Treasure.</b> Improved Pink Chieftain, late; incurved.....	3'	Sept. 20	Nov. 10-15	4.00	35.00
<b>Rosa Raisa.</b> Rose pink, incurved.....	4½'	Sept. 20	Nov. 15	5.00	45.00
<b>Rose Chochoard.</b> Hard to beat for earliest pink.....	3'	Aug. 20	Oct. 15	4.00	35.00
<b>Rose Delight.</b> Soft, rose pink, incurved....		Sept. 5	Oct. 20	7.00	65.00
<b>Rose Glory.</b> Bright lavender pink.....	5'	Take terminal bud	Oct. 15-20	25.00	200.00
<b>Rose Glow.</b> Brighter than Chieftain Pink..	3'	Sept. 10	Early Nov.	4.00	35.00
<b>Rose Marie.</b> Similar to Smith's Enchantress in color and form.....	5'	Aug. 5-15	End of Sept.	7.00	65.00
<b>Rose Perfection.</b> An early Chieftain; midseason.....	3'	Sept. 10	Nov. 5-10	4.00	35.00
<b>Smith's Enchantress.</b> Bright rose pink..	4'	Early Sept.	Oct. 7	4.00	35.00
<b>Thanksgiving Pink.</b> Late, dark pink.....			Nov. 25	4.00	35.00
<b>Turner, Pink</b> (Also known as <b>Mrs. J. Leslie Davis</b> ), large, incurved.....		Aug. 25	Nov. 1	6.50	55.00
<b>Unaka.</b> Large, early flowering pink.....	4'	Aug. 5	Oct. 5-10	4.00	35.00
<b>Venus.</b> Light pink, incurved.....			Oct. 15-20	4.00	35.00
<b>Wells' Late Pink.</b> Reflex.....			Nov. 10	8.00	75.00
<b>Woolf's Pink.</b> Best early pink, incurved like Dr. Enguehard in form; must be planted not later than May 1.....	3½'	Aug. 20	Oct. 10	7.00	65.00



HILDA BERGEN

## CHRYSANTHEMUMS (Rooted Cuttings)

## Large Flowering Bronze and Red Varieties

Name and Description	H'ght	Select Bud	Matures	Price	
				100	1000
<b>Antique.</b> Late flowering, sport of Enguehard; bronze, incurved. ....		Sept. 5	Nov. 21 and later	\$5.00	\$45.00
<b>Bronze Chadwick (Indian Summer)</b> .....			Nov. 25	5.00	45.00
<b>Bronze McNeice</b> .....			Oct. 25	6.00	55.00
<b>Bronze Mistletoe.</b> Sport of Pink Mistletoe; very serviceable late bronze. ....		Sept. 30 and later	Dec.	4.00	35.00
<b>Bronze Turner.</b> Light bronze, semi-dwarf ....		Aug. 25	Nov. 1	9.00	85.00
<b>Bronze Unaka.</b> Early.....	4'	Aug. 5	Oct. 10	4.00	35.00
<b>Cullingford II.</b> Red.....	Med.		Nov. 15 and later	4.00	35.00
<b>Detroit News.</b> Bronze, incurved.....		Aug. 30	Oct. 25	5.00	45.00
<b>Garnet King.</b> Finest red yet produced. Reflex.....		Sept. 20	Nov. 20-30	8.00	75.00
<b>Gladys Pearson.</b> Selected deep bronze... 5'	5'	Sept. 30	Nov. 25	4.00	35.00
<b>Glenview.</b> Standard bronze.....			Nov. 24	6.00	55.00
<b>Governor Green.</b> Large crimson with old gold on reverse of petals.....		Aug. 15	Oct. 15	8.00	75.00
<b>Harvard.</b> Best dark crimson, late..... 5'	5'	Sept. 30	Nov. 15 and later	4.00	35.00
<b>Hilda Bergen.</b> Fine early mahogany bronze, incurved.....			Oct. 8	15.00	140.00
<b>Indianola.</b> New, old gold and bronze, best early bronze..... 4'	4'	Aug. 25	Oct. 8-10	7.50	65.00
<b>Mohawk Chief.</b> Latest crimson to date. Reflexed..... 3'	3'	Oct. 1 and later	End of Nov. into Dec.	15.00	140.00

## Large Flowering Bronze and Red Varieties—Continued

Name and Description	H'ght	Select Bud	Matures	Price	
				100	1000
<b>Mrs. David F. Roy.</b> Large crimson with golden reverse. Considered best commercial red. Semi-dwarf.....	.....	Aug. 25	Thanksgiving	\$5.00	\$45.00
<b>Orange Queen.</b> Bronze.....	3½'	Sept. 10	Nov. 25	5.00	45.00
<b>Smith's Brilliant.</b> Best early red.....	3-3½'	Sept. 1	Oct. 25	5.00	45.00
<b>Yvonne Tints.</b> Cardinal and tan.....	4'	Sept. 30	Nov. 25	5.00	45.00
<b>Tekonsha.</b> Large, late bronze.....	3½'	Sept. 10	Nov. 30	5.00	45.00
<b>Tints of Gold.</b> Earliest to flower bronze; hardy, makes wonderful bush if not disbudded.....	.....	.....	Oct. 10	4.00	35.00
<b>W. H. Waite.</b> .....	.....	Aug. 15	Nov. 10	8.00	75.00

## CHRYSANTHEMUMS (Rooted Cuttings)

## Large Flowering Exhibition Varieties

PRICE, ROOTED CUTTINGS, ALL THE FOLLOWING, \$10.00 per 100:

Name and Description	Select Bud	Matures
<b>J. R. Booth.</b> Bright yellow, sport from Nagiroc; semi-dwarf.....	Aug. 20	.....
<b>Calumet.</b> Large bronze; one of the best exhibition varieties.....	Aug. 25	.....
<b>Cherokee.</b> Light bronze, strong grower; tall. Assumes rosy tint under artificial light.....	Aug. 20	Oct. 30
<b>Cheyenne.</b> Distinct chamois or buckskin, large size, vigorous growth; when planted late gives double flowers for Thanksgiving.....	Aug. 25	Nov. 1 and later
<b>Earl Kitchener.</b> Bronze.....	Aug. 20	Nov. 1
<b>General Pershing.</b> Deep American Beauty Red.....	Aug. 20	Nov. 5
<b>Mary L. Clark.</b> A light shade of lavender pink, 8" in diameter. May be grown for commercial purposes and is a rose pink from Sept. bud. 5' from March propagation.....	Aug. 25	.....
<b>Mrs. J. Leslie Davis.</b> A sport from Pink Turner and is identical in every way except color, which is a very pleasing shade of pink. Semi-dwarf. Selected stock.....	Aug. 25	Nov. 1
<b>Elberon.</b> Bright pink, incurved; semi-dwarf.....	Aug. 25	Nov. 15
<b>Mrs. H. S. Firestone.</b> Chamois buff, dwarf, very large blooms with rigid stem and good foliage.....	Aug. 25	.....
<b>Majestic.</b> Buff, similar to Cheyenne, large, suitable for exhibition or commercial purposes. Wide petals with pointed ends forming a reflexed spherical bloom. Medium dwarf growth.....	Aug. 20	Oct. 25
<b>Mrs. G. G. Mason.</b> Bronze and red. 5' high.....	Aug. 20	.....
<b>Nagiroc.</b> An exceedingly large, reflexed golden bronze, admirably adapted to exhibition purposes; semi-dwarf.....	Aug. 15	.....
<b>Nerissa.</b> Rosy mauve, very large, dwarf.....	Sept. 15	Nov. 1
<b>Louisa Pockett.</b> Purest white from early buds and delicate pink from late ones; semi-dwarf.....	Aug. 10	Nov. 15
<b>Pink Delight.</b> .....	Aug. 20	Nov. 5
<b>Pockett's Crimson.</b> Crimson with gold tips of petals which stand out showing its color to advantage; dwarf.....	Aug. 10	.....
<b>Purple King.</b> Nearest to purple; very large.....	Sept. 5	.....
<b>Rosena.</b> A seedling from Nerissa, but not so closely incurved, and of a lighter or softer color. The surface of the petals is a bright rose approaching cerise while the reverse side which predominates is a soft pink; semi-dwarf.....	Aug. 30	Nov. 7
<b>Turner (Bronze).</b> Light bronze, sport from William Turner; semi-dwarf.....	Aug. 25	Nov. 1
<b>William Turner (White).</b> Incurved, purest white; semi-dwarf.....	Aug. 30	Nov. 1
<b>Turner (Pink).</b> Large incurved; also known as Mrs. J. Leslie Davis.....	Aug. 25	Nov. 1
<b>Turner (Yellow).</b> Bright yellow, semi-dwarf, sport of William Turner... ..	Aug. 30	Nov. 1
<b>Vermont.</b> Very large, incurved pink. One of the best.....	Aug. 10	Dec. 1
<b>William H. Waite.</b> Bright bronze, dwarf.....	Aug. 15	Nov. 5
<b>Yellow Pockett.</b> Light yellow, sport from Louisa Pockett; semi-dwarf.. ..	Aug. 10	Nov. 15

## CHRYSANTHEMUMS (Rooted Cuttings)

## Pompons--Large Flowering Types

Name and Description	H'ght	Matures	Price	
			100	1000
<b>Dorothy Turner</b> (New). Without doubt the most attractive and perfect Pompon yet introduced. Attains perfection for Thanksgiving. Color is bronze and old gold. Fine, clean grower. 2¼" pots. Ready Mar. 1, and later	2½'	Thanksgiving Thanksgiving	\$15.00 20.00	\$125.00 175.00
<b>Acto</b> . Deep pink, midseason.....		Oct. 25	4.00	35.00
<b>Alecia</b> . Resembles Frank Wilcox, but nearer to true Pompon type.....	3'	End of Oct.	8.00	75.00
<b>Aletta</b> . Very light early pink dwarf.....		Oct. 10	5.00	45.00
<b>Alice</b> . Pink. Very fine grower. A favorite in Boston.....		Nov. 1	4.00	35.00
<b>Anna L. Moran</b> . Brilliant flame scarlet.....		Oct. 15	4.00	35.00
<b>Autumn Glints</b> . Golden bronze.....		Nov. 5	4.00	35.00
<b>Betty Watkins</b> . Golden bronze, flowers 1½" in diam.....		Nov. 15	4.00	35.00
<b>Bokhara</b> . Autumn color, red, rose and bronze.....		Oct. 25	4.00	35.00
<b>Bronze Doty</b> . Terra cotta bronze; fine for pot culture.....		Oct. 20-25	6.00	55.00
<b>Bucena</b> . Light bronze, free flowering.....	2½'	Thanksgiving	4.00	35.00
<b>Chicago Pearl</b> . White, choice variety.....		Nov. 15-25	5.00	45.00
<b>Cora Peck Buhl</b> . Bright yellow larger, brighter than Sun-glow.....	3½'	Oct. 25	4.00	35.00
<b>Connie Dick</b> (Yellow Doty).....		Nov. 1 and later	6.00	55.00
<b>Clarice</b> . Light pink, semi-dwarf flowers 2" in diameter.....		Oct. 12	4.00	35.00
<b>Capt. Cook</b> . Early rose pink.....		Oct. 20	4.00	35.00
<b>Clorinda</b> . Bronze, semi-dwarf.....		Nov. 25	4.00	35.00
<b>Crimson Lustre</b> . Bright crimson.....	3'	Nov. 15-20	8.00	75.00
<b>Denice</b> . Soft pink, white center.....	3½'	Nov. 10-15	8.00	75.00
<b>Diana</b> . White, large double, hardy.....		Nov. 20 and later	4.00	35.00
<b>Dream</b> . Color of Mrs. E. D. Godfrey. No disbudding.....		Thanksgiving	4.00	35.00
<b>Edina</b> . Beautiful rose pink.....		Oct. 15	4.00	35.00
<b>Ermalinda</b> . Old rose.....	3½'	Oct. 25	4.00	35.00
<b>El Reno</b> . Golden bronze, suitable for pot culture.....	2¼'	Nov. 25	4.00	35.00
<b>Elora</b> . White with blush shading.....		Nov. 1-10	5.00	45.00
<b>Fire Bird</b> . Fine early red, suitable for pot plants, also hardy.....		Oct. 25	4.00	35.00
<b>Fairy Queen</b> . Deep Enchantress pink.....		Oct. 25	4.00	35.00
<b>Firelight</b> . Brilliant carmine.....		Oct. 10	4.00	35.00
<b>Flora</b> . Deep red.....		Nov. 1	4.00	35.00
<b>Frank Wilcox (Souv. d'Or) (Mrs. Beu)</b> . Golden bronze.....		Nov. 25	4.00	35.00
<b>Felice</b> . Orange, similar to Orange Queen; pompon bronze..	2'	Nov. 12-20	4.00	35.00
<b>Gold-Drop</b> . Golden bronze with crimson eye.....		Nov. 6-10	5.00	45.00
<b>Gold Coin</b> . Bright yellow.....		Nov. 25	5.00	45.00
<b>Gold Tips</b> . Bright bronze, bright yellow tip. \$5.00 per doz.....		Thanksgiving	25.00	200.00
<b>Golden Nymph</b> . Latest bright yellow.....	2½'	Dec. 10 and later	4.00	35.00
<b>Golden Sceptre</b> . Bright yellow.....		Nov. 25	4.00	35.00
<b>Greta</b> . Pure white, follows Irene and Minong.....		Oct. 20	8.00	75.00
<b>Harvest Moon</b> . Golden yellow (A. N. Pierson, introducer).....			4.00	35.00
<b>Ida</b> . Yellow, early.....		Oct. 15	4.00	35.00
<b>Illona</b> . Large sprays, rosy lavender, same color as Leilah, but later (free flowering).....	Med.	Nov. 10	4.00	35.00
<b>Iridescent</b> . Yellow and pink shades. \$5.00 per doz.....	Med.	Oct. 15	25.00	200.00
<b>Iva</b> . Reddish bronze, midseason.....		Oct. 25	4.00	35.00
<b>Jola</b> . Bright red.....	3'	Nov. 20-30	5.00	45.00

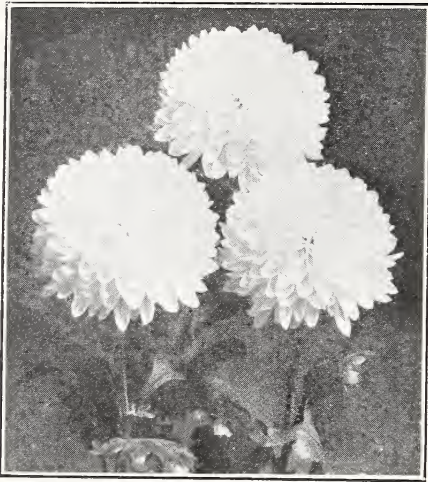
## Large Flowering Exhibition Varieties—Continued

Name and Description	H'ght	Matures	Price	
			100	1000
<b>Leilah.</b> Rose pink, one of the best early.....		Oct. 15	\$4.00	\$35.00
<b>Leroy.</b> Blush pink, light.....	Med.	Nov. 10	4.00	35.00
<b>Lilac.</b> Improvement in color over Leilah. <b>\$5.00 per doz.</b> ....		Oct. 15	25.00	200.00
<b>Lincoln, W. H.</b> Large flowering yellow; one of the best yellows.....		Oct. 25 and later	8.00	75.00
<b>Lindy.</b> Very attractive salmon copper color. It is distinctive and a good keeper.....		Nov. 15-30	6.00	55.00
<b>Lorraine Meech.</b> Dull crimson with bronze reverse.....		Nov. 20-30	4.00	35.00
<b>Lucia.</b> Light lavender pink.....		Oct. 25	4.00	35.00
<b>Lucinda.</b> Bright deep pink.....		Nov. 12-20	5.00	45.00
<b>Mariana.</b> White.....		Nov. 1	4.00	35.00
<b>Minong.</b> Pure white.....		Oct. 20-25	4.00	35.00
<b>Morning Glow.</b> Pompon, shell pink.....		Nov. 1	4.00	35.00
<b>Mrs. Nellie Kleris.</b> Lavender pink.....		Oct. 25	4.00	35.00
<b>My Pride.</b> Early bright carmine pink; good grower and fine keeper.....		Oct. 15-25	4.00	35.00
<b>Neola.</b> Light pink, strong grower, requires very little tying.....		Nov. 15-25	4.00	35.00
<b>Niza.</b> Delicate pink, early; largest of its color.....		Oct. 15	4.00	35.00
<b>Nordi.</b> Pure white, dwarf, 7 to 8 medium sized flowers to a spray.....		Nov. 10-25	5.00	45.00
<b>Nubian.</b> Bronzy red, large (fine sprays).....		Oct. 15-20	7.00	65.00
<b>Orange Prince.</b> Striking Orange.....	3'	Oct. 25	8.00	75.00
<b>Pagosa.</b> Dark pink, same type as Usonia.....		Nov. 25	8.00	75.00
<b>Pink Dot.</b> White with crimson eye.....		Oct. 25	4.00	35.00
<b>Quinola.</b> Clear orange yellow, late.....		Nov. 20-25	4.00	35.00
<b>Rowena.</b> Large, late, medium bronze.....	2½-3'	Nov. 25 and later	4.00	35.00
<b>Red Wilcox (Red Beau).</b> Reddish bronze.....		Nov. 25 and later	4.00	35.00
<b>Snow Crest.</b> Pure white, fine sprays.....		Nov. 10	4.00	35.00
<b>Stormy Petrel.</b> Early white.....		Oct. 20	4.00	35.00
<b>Source d'Or, or Golden Feather.</b> Bronze, wonderful pot plant.....		Nov. 15	5.00	45.00
<b>Sarah Townsend.</b> Bronze.....		Nov. 15	5.00	45.00
<b>Sarah Fisher.</b> Yellow makes large spray.....		Oct. 10-20	7.50	65.00
<b>Silver Tips.</b> Bright pink with silver tips. <b>\$5.00 per doz.</b> ....		Nov. 10	25.00	200.00
<b>Sunburst.</b> Bronze with bright yellow center.....		Nov. 10-15	12.00	100.00
<b>Tricker.</b> Yellow.....		Oct. 17	4.00	35.00
<b>Usonia.</b> Bright pink (Smith's 1927 introduction).....	2½'	Nov. 20-25	5.00	45.00
<b>Uvalda.</b> Early white, large, sometimes shows shade of pink when first opening bud becomes pure white.....		Oct. 10	4.00	35.00
<b>Wanda.</b> Large white.....	3½'	Oct. 23	5.00	45.00
<b>Western Beauty.</b> Late, old rose.....		Nov. 15-25	4.00	35.00
<b>White Caps.</b> White.....		Nov. 1	4.00	35.00
<b>White Wings.</b> Best early white.....		Oct. 10	4.00	35.00
<b>Yellow Doty.</b> Yellow, stems 4' long.....		Oct. 25 to Nov. 1	5.00	45.00
<b>Yellow Fellow.</b> Very fine, yellow.....		Nov. 15	5.00	45.00
<b>Yellow Yuletide.</b> Light yellow.....		Nov. 25 to Dec. 1	5.00	45.00
<b>Yuletide.</b> Best late white.....		Nov. 25 and later	4.00	35.00
<b>Yuvawn.</b> Similar in color and habit to Gold Coin, but earlier.....	3'	Nov. 15-20	9.00	85.00
<b>Zenobia.</b> Early yellow.....		Oct. 10	4.00	35.00
<b>Zora.</b> Early, bright yellow, suitable for pot plant.....		Oct. 15-20	4.00	35.00

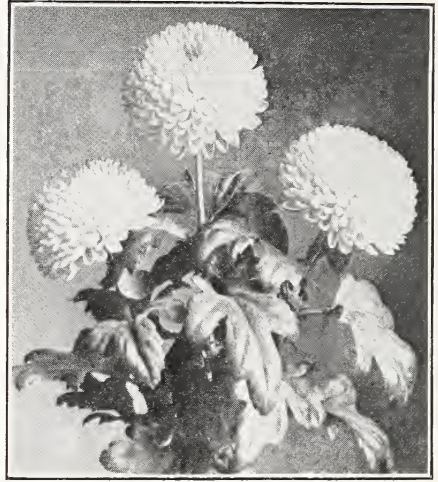
## CHRYSANTHEMUMS (Rooted Cuttings)

## Pompons, Baby, and Button Types

Name and Description	H'ght	Matures	Price	
			100	1000
<b>Adironda.</b> Small flower, best early bronze, suitable for pot plants.		Oct. 15	\$4.00	\$35.00
<b>Baby, or Golden Button.</b> Yellow, smallest grown good commercial.		Nov. 15	4.00	35.00
<b>Baby Margaret.</b> White baby.		Nov. 15	5.00	45.00
<b>Becky McLane.</b> Bronze, button, late flowers.		Nov. 25	4.00	35.00
<b>Big Baby.</b> Yellow.		Nov. 15-25	5.00	45.00
<b>Billie Burke.</b> Golden bronze button.		Nov. 25	5.00	45.00
<b>Bright Eyes.</b> Outer petals are orange apricot bluish white, suitable for pot culture.		Oct. 25	5.00	45.00
<b>Bronzito.</b> Pompon, button type, red gold bronze; suitable for pot culture.	3'	Nov. 18	4.00	35.00
<b>Brown Beauty.</b> Latest dark brown in button type; suitable for pot culture.	2'	Dec. 1	5.00	45.00
<b>Beuna.</b> Golden bronze, small flower, button type. Height is 2½' from June 20 planting.		Oct. 25	5.00	45.00
<b>Christmas Gold.</b> Button type, yellow latest grown; flowers 1" diameter.		Dec. 10 and later	4.00	35.00
<b>Clare.</b> Pure white, baby type, very free white.		Nov. 15	4.00	35.00
<b>Claret.</b> Button type, claret color.		Oct. 25 to Nov. 10	4.00	35.00
<b>Crista.</b> A yellow, sulphur yellow, baby type, suitable for pot culture. 1" blooms (very free flowering).	2½'	Nov. 15	4.00	35.00
<b>Dainty Maid.</b> Pearly white, baby type (most perfect baby Pompon).	2½'	Nov. 1	4.00	35.00
<b>Dotson.</b> Old Rose, reflex petals, best early pink; suitable for pot plant.		Oct. 12-15	4.00	35.00
<b>Ethel.</b> Bright red baby Pompon (free flowering).	2½'	Oct. 25	5.00	45.00
<b>Frank Wilcox, Jr.</b> Baby button, orange bronze, same as Mrs. Beau; very fine keeping qualities.		Nov. 25	5.00	45.00
<b>Golden Climax.</b> Pompon, fine yellow, button type.		Nov. 10-20	4.00	35.00
<b>Golden Crest.</b> Bright yellow, small flower, button type. Plant June 20.	2½'	Nov. 1-10	4.00	35.00
<b>Gold Mine.</b> Clear yellow.		Nov. 1	8.00	75.00
<b>Hilda Canning.</b> Bronze, small flowering button type.		Nov. 15	4.00	35.00
<b>Irene.</b> Early pure white, suitable for pot plant, 1 to 1¼" blooms.	3'	Oct. 18-20	4.00	35.00
<b>Little Tot.</b> Pale rose pink.		Nov. 1-10	5.00	45.00
<b>Little Truant.</b> Bronze. Latest of all baby.		Dec.	8.00	75.00
<b>Louise Davenport.</b> Bronze button type.		Nov. 20 and later	5.00	45.00
<b>Margot.</b> White baby type, earliest.		Oct. 8	5.00	45.00
<b>Marguerite Clark.</b> Rose pink, 1" diameter, baby type, very free flowering.	3½'	Nov. 5	5.00	45.00
<b>Mary Pickford.</b> Pure white, 1" blooms with stiff stem.	Med.	Nov. 1	5.00	45.00
<b>Nemo.</b> Latest white button or baby Pompon; suitable for pot plant.		Nov. 25 and later	4.00	35.00
<b>New York.</b> Bronze seedling from Hilda Canning.		Nov. 25	4.00	35.00
<b>Norine.</b> Button, seedling from Christmas Gold; yellow, height is 2½'; from June planting.		Nov. 25	4.00	35.00
<b>Nuggets.</b> Yellow, button type.		Nov. 1	4.00	35.00
<b>Ouray.</b> Button type, dark mahogany brown; suitable for pot plant.		Oct. 20	5.00	45.00
<b>Padoka.</b> Light salmon, dwarf, suitable for pot culture.		Oct. 20	5.00	45.00
<b>Pauline Wilcox.</b> Bronze, button type.		Nov. 5	4.00	35.00
<b>Rodell.</b> Button type, early yellow.		Oct. 20	4.00	35.00
<b>Romain Warren.</b> Orange yellow with bronze; very distinct.		Nov. 15-25	4.00	35.00
<b>Skibo.</b> Early yellow button.		Oct. 20	4.00	35.00
<b>Varsity.</b> Button type, yellow.		Nov. 1	4.00	35.00
<b>Wee-Dot.</b> Bright bronze, dwarf and free; fine for pots.		Oct. 25	8.00	75.00
<b>White Midget.</b> Pure white, larger than Baby.		Nov. 5	5.00	45.00



SILVER BALL



BALL OF GOLD

CHRYSANTHEMUMS (Rooted Cuttings)  
**Disbudding Varieties**

BEST LARGE FLOWERING POMPONS AND ANEMONE TYPES

Name and Description	H'ght	Matures	Price	
			100	1000
<b>Adelphia.</b> Large white Pompon, good disbud.	3'	Oct. 15	\$5.00	\$45.00
<b>Angelo.</b> Light pink; plant end of May to get stems.	2½-3'	Oct. 25	5.00	45.00
<b>Ball of Gold.</b> Bright yellow. Perfect form.	2½'	Nov. 5-10	8.00	75.00
<b>Cometo.</b> Dark rose, shaded to magenta. Seedling of Lilian Doty.		Nov. 1	4.00	35.00
<b>Gold Ball.</b> Flowers 2½-3"	2½'	Nov. 5-10	8.00	75.00
<b>Gold Coin.</b> Pompon, bright yellow.		Thanksgiving and later	5.00	45.00
<b>Golden Ideal.</b> Clear yellow.		Thanksgiving and later	6.00	50.00
<b>Juliana.</b> Pompon, yellow.	3½'	Oct. 22	5.00	45.00
<b>Laelia.</b> Rose pink Anemone.		Nov. 5	4.00	35.00
<b>Lilian Doty.</b> Pompon; shell pink; large flowers.		Oct. 25	4.00	35.00
<b>Mimico.</b> Pompon. Seedling from Lilian Doty.	3½'	Oct. 22	5.00	45.00
<b>Miramar.</b> Pompon; fine bronze.	3½'	Oct. 25	5.00	45.00
<b>Muskoka.</b> Golden bronze; Pompon; flowers 3½-4" in diameter.	3½'	Nov. 10	5.00	45.00
<b>Narada.</b> Pompon, light yellow. Flowers 3½" in diameter.	2½-3'	Nov. 10	5.00	45.00
<b>November Gold.</b> Pompon; large, very fine yellow. Makes 3 to 5 sprays per plant.		Nov. 5-10	5.00	45.00
<b>Pomona.</b> Anemone; fine, pure white shaded with straw; fine for pot culture; most serviceable when disbudded.		Nov. 10	5.00	45.00
<b>Red Doty.</b> Pompon; large wine red with silver.		Oct. 25	5.00	45.00
<b>Rose Charm.</b> Bright rose pink.		Oct. 25	5.00	45.00
<b>Silver Ball.</b> Very early, pure white.		Oct. 12	8.00	75.00
<b>Sunshine.</b> Anemone.		Nov. 15 and later	5.00	45.00
<b>Unalga.</b> Pompon; intense yellow, as large as Bonaffon when disbudded. Brighter than Christmas Gold.	2½'	Nov. 25	5.00	45.00
<b>Wanda.</b> Large, white; Pompon.	3½'	Oct. 20	5.00	45.00
<b>White Doty.</b> Pompon; white sport from Lilian Doty; very vigorous.		Oct. 25	4.00	35.00
<b>Yuvawn.</b> Similar in color and habit to Gold Coin, but earlier.	3'	Nov. 15-20	9.00	85.00





ANEMONE TYPE CHRYSANTHEMUM

## CHRYSANTHEMUMS (Rooted Cuttings)

## Anemone Type

Name and Description	H'ght	Matures	Price	
			100	1000
<b>Adenlair.</b> Anemone; shell pink with creamy cast; high, rounded cushion.....	3'	Nov. 20	\$5.00	\$45.00
<b>Blanche.</b> Anemone (Improved Garza); white, large.....		Nov. 1	5.00	45.00
<b>Chestnut.</b> Even shade of tan bronze Garza, 3¼" blooms.	2½'	Nov. 10	5.00	45.00
<b>Coed.</b> Soft pink with tinge of yellow in center of cushion. Flowers 3½" in diameter.....	3'	Nov. 10	5.00	45.00
<b>Eugene Langauet.</b> Small flowering type, golden yellow.....		Nov. 25	4.00	35.00
<b>Florera.</b> Light yellow with very large cushion. Best when disbudded.....	3'	Nov. 10	5.00	45.00
<b>Garza Supreme.</b> Improved White Garza.....		Nov. 20 to Dec. 1	8.00	75.00
<b>Golden Lida Thomas.</b> Golden sport of Lida Thomas.....		Nov. 25	5.00	45.00
<b>Golden Pheasant.</b> Bright yellow; grow natural or disbud.....		Nov. 25	5.00	45.00
<b>Graceland.</b> Large flowering, pure white with yellow center. Fine for pots.....		Oct. 25-Nov. 1	8.00	75.00
<b>Graf Von Oriole.</b> Pure rose pink fine when disbudded.....			6.00	55.00
<b>Izola.</b> Deep pink, good producer.....	3'	Nov. 1	4.00	35.00
<b>Laelia.</b> Rose pink.....		Nov. 5	4.00	35.00
<b>Lida Thomas.</b> White petals and yellow center; late.....		Nov. 25	5.00	45.00
<b>Maple Leaf.</b> Red and yellow, suitable for disbudding; fine for pot culture. Flowers 3½" in diameter.....	2'	Nov. 10	5.00	45.00
<b>Nokomis.</b> Same as Purple King; low white cushion; dwarf, best when disbudded; excellent when grown as a pot plant.....		Nov. 15	5.00	45.00
<b>Peter Pearson.</b> Light pink, high light yellow cushion.....		Nov. 25 and later	6.00	55.00
<b>Princess Ileana.</b> Commercial Anemone; bright pink, violet cast, tendency to incurve, cushion light yellow.....	3½'	Nov. 10	4.00	35.00
<b>Primrose.</b> Light yellow; dwarf, most serviceable as a pot plant.....		Oct. 25	5.00	45.00

## Anemone Type—Continued

	Name and Description	H'ght	Matures	Price	
				100	1000
<b>Puritan.</b>	Pure white Anemone; fine for pots.		Nov. 1	\$5.00	\$45.00
<b>Rio Rita.</b>	Pure yellow, strong grower, makes a fine heavy spray and a good keeper.		Nov. 15-30	5.00	45.00
<b>Rose Royal.</b>	Violet rose, distinct in color; fine disbudded.		Nov. 15	6.00	50.00
<b>Sunshine.</b>	Best yellow; semi-dwarf, intense yellow; large. Fine disbudded.		Nov. 15 and later	5.00	45.00
<b>The Belle.</b>	Pure white, 3" diameter.		Nov. 10	5.00	45.00
<b>The Chief.</b>	Light yellow; flowers 3" in diameter.	3'	Nov. 10	4.00	35.00
<b>Tronesta.</b>	Bright pink, can be disbudded, best early; blooms 3" in diameter.		Oct. 12	5.00	45.00
<b>Vivian Martin.</b>	White with yellow cushion. Baby Anemone		Thanksgiving	5.00	45.00
<b>Volunteer.</b>	Yellow		Nov. 25	4.00	35.00
<b>White Garza.</b>	White		Nov. 20	5.00	45.00
<b>Yellow Garza.</b>	Yellow sport of Garza.		Nov. 20	5.00	45.00

## CHRYSANTHEMUMS (Rooted Cuttings)

## Pot Plant Varieties

CAPRICE VARIETIES:	Price			Price	
	100	1000		100	1000
<b>Bronze Caprice</b>	\$6.00	\$55.00	<b>Light Pink Caprice</b>	\$6.00	\$55.00
<b>Butler's Caprice.</b>			<b>Lilac Caprice</b>	6.00	55.00
Dark pink	6.00	55.00	<b>Purple Caprice</b>	6.00	55.00
<b>Kathleen Thompson.</b>			<b>White Caprice</b>	6.00	55.00
Crimson	6.00	55.00	<b>Yellow Caprice</b>	6.00	55.00
	Name and Description	H'ght	Matures	100	1000
<b>Angelo.</b>	Dwarf Pompon; large flowering pink; fine.	2½-3'	Oct. 25	\$5.00	\$45.00
<b>Aniwa.</b>	Dwarf Anemone; shell pink, cream cushion, disbud		Oct. 10	8.00	.....
<b>August Dasse.</b>	Dwarf; intense yellow, solid globe form.		.....	8.00	.....
<b>Benoit.</b>	Beautiful bright cerise pink.	15"	Oct. 20-25	8.00	.....
<b>Brutus.</b>	Large flowering bronze.		Nov. 10	8.00	.....
<b>Canova.</b>	Pompon; very bright yellow.	12"	Nov. 20	8.00	.....
<b>Eileen Masson.</b>	2" pots; beautiful dark rose, daisy type; 2 rows of petals; early flowering, June 15 to Oct. Single.	12"	.....	8.00	75.00
<b>Floradora.</b>	Large dwarf Anemone; orange cushion with light bronze florets.		.....	8.00	.....
<b>Garza, White.</b>	Anemone; a well known white.		Nov. 20	5.00	.....
<b>Garza, Yellow.</b>	Anemone; yellow, sport of Garza.		.....	5.00	.....
<b>Glorv of Seven Oaks.</b>	Golden yellow; very early and free flowering; also hardy.		.....	6.00	.....
<b>Godfrey's Perfection.</b>	Anemone; pure white dwarf; flowering 2½ to 3" in diameter.		Thanksgiving	6.00	.....
<b>Graceland.</b>	Dwarf white Anemone; full cream disc, disbud		.....	8.00	.....
<b>Greystone.</b>	Large flowering, golden orange.		.....	8.00	.....
<b>Laelia.</b>	Anemone; rose pink, dwarf, one of the best for pot plants.		Nov. 1	4.00	35.00
<b>Lincoln, W. H.</b>	Best late yellow; large flowering.		.....	8.00	75.00
<b>Mitzi.</b>	Pompon; dwarf, yellow with red center; 18" high from final potting July 1		.....	8.00	.....
<b>Nadia.</b>	Dwarf Pompon Anemone; bright yellow.		Nov. 20 and later	8.00	.....
<b>Natic.</b>	Dwarf golden Anemone.		Nov. 25	8.00	.....
<b>Patty.</b>	Late; Enchantress pink; dwarf, large flowering.		.....	5.00	.....
<b>Pigmy.</b>	Superior to Caprice as a pot plant, dwarf, light pink, high round flowers, 3" diameter.	12"	Nov. 10	8.00	.....
<b>Puritan.</b>	Anemone; pure white, strong stem; excellent.		Nov. 1	6.00	.....
<b>Savina.</b>	Large flowering Pompon. Dwarf variety. Laven-der pink.		Oct 15	8.00	.....
<b>Wanda.</b>	Large flowering white.		Oct. 20	6.00	.....
<b>Wee Dot.</b>	Bright bronze. Dwarf and free.		Oct. 25	8.00	75.00

**CHRYSANTHEMUMS (Rooted Cuttings)**  
**Single or Daisy Type**

Name and Description	H'ght	Matures	Price	
			100	1000
<b>Alberta.</b> A new sport of Anna Nanzig; beautiful old rose color.		Nov. 1	\$8.00	\$75.00
<b>Aloma.</b> New, Japanese, terra cotta bronze; very attractive, fine grower.		Oct. 15 and later	8.00	75.00
<b>Alice Howell.</b> Orange yellow; early and free flowering; also good outside.			6.00	55.00
<b>Anna Nanzig.</b> Purplish pink.		Nov. 1	5.00	45.00
<b>Bronze Buckingham.</b> Same as Pink Buckingham, only bronze.		Nov. 1 and later	4.00	35.00
<b>Bronze Godfrey.</b>		Nov. 25	5.00	45.00
<b>Charter Oak.</b> Yellow, Bronze Buckingham; large, strong stemmed spray.		Nov. 25	4.00	35.00
<b>Dusky Maid.</b> Golden bronze.		Nov. 15-25	4.00	35.00
<b>Elizabeth Firestone.</b> Pink; commercial.		Nov. 15	4.00	35.00
<b>Elizabeth McDowell.</b> Finest orange bronze.		Nov. 15	4.00	35.00
<b>Golden Ideal.</b> Large, clear yellow. Best when disbudded.		Thanksgiving later	6.00	55.00
<b>Golden Oriole.</b> Earliest single yellow.		Oct. 10	5.00	45.00
<b>Gretchen Piper.</b> Deep glowing yellow.		Oct. 25	5.00	45.00
<b>Helen Hubbard.</b> Rich velvety crimson.		Nov. 20	5.00	45.00
<b>Ida K. Skiff.</b> Brilliant bronze amber.			8.00	75.00
<b>Margaret Waite.</b> Sport of E. D. Godfrey, pink.		Nov. 25	4.00	35.00
<b>Melba.</b> Similar to Aloma in color, but later.		Nov. 5	8.00	75.00
<b>Mensa, Golden.</b>		Nov. 15	5.00	45.00
<b>Mensa, White.</b> Like Shasta; one of the largest single Daisy whites.		Nov. 15	5.00	45.00
<b>Miss Isabelle.</b> Bronze Mum, or Bronze Godfrey.		Nov. 25	4.00	35.00
<b>Miss Mary Pope.</b> Early, pale pink; large flower.		Oct. 20	5.00	45.00
<b>Mrs. E. D. Godfrey.</b> Best light pink, strong grower.		Thanksgiving	4.00	35.00
<b>Mrs. Herbert Hoover.</b> Orange bronze.		Thanksgiving	5.00	45.00
<b>Mrs. W. E. Buckingham.</b> Rosy pink, early, rather large; good keeper.		Nov. 1 and later	4.00	35.00
<b>Murray Hill Beauty.</b> Beautiful old rose color; a big hit in New York market.		Thanksgiving	8.00	75.00
<b>Old Gold.</b> Pure, clear old gold. Holly leaf.		Nov. 15	5.00	45.00
<b>Peggy Buckley.</b> Beautiful mauve pink.		Nov. 10-15	5.00	45.00
<b>Ruth E. Adams.</b> Beautiful bronzy old gold.		Nov. 5	5.00	45.00
<b>Student Prince.</b> Deeper bronze than Bronze Buckingham, a stronger and better grower; fine keeper.		Nov. 15-30	5.00	45.00
<b>Taxpayer.</b> Shell Pink with 4 rows of petals. Flowers 4 inches across. Strong grower. Wonderful keeper. Favorite in Boston market.			12.50	100.00
<b>Thanksgiving Bronze.</b> Bronzy apricot.	3'	Thanksgiving	6.00	50.00

## Hardy Field Grown Mums

**READY APRIL 15th AND LATER—FOR OUTSIDE PLANTING**  
**1 DOZEN FOR \$2.00, 25 FOR \$3.50, 50 FOR \$6.50, AND 100 FOR \$12.00**

Name and Description	Name and Description
<b>Autumn Glow.</b> Rose crimson.	<b>Indian.</b> Copperish red.
<b>Elkton.</b> Blush white, slightly tinged lavender, profuse, very compact, multi-petaled flowers of dollar size.	<b>Little Bob.</b> Bronze, button.
<b>Excelsior.</b> Yellow, very free flowering, large.	<b>Marie Antoinette.</b> Deep pink.
<b>Field of Snow.</b> Pure white, button.	<b>Old Homestead.</b> Buff pink, one of the best hardies.
<b>Golden Queen.</b> Large, yellow.	<b>Skibo.</b> Showy yellow button.
<b>Hilda Wells.</b> Tuscan red, shaded yellow at the base of the petals.	<b>Victory.</b> Large white.

Also note Rooted Cuttings of Early Hardy Varieties above

## CHRYSANTHEMUMS (Rooted Cuttings)

# Hardy Early Flowering for Outside Planting

ALL THE FOLLOWING AT \$8.00 PER 100, \$4.50 PER 50, \$2.50 PER 25

Name and Description

- A. Berham.** Orange bronze.  
**Alice Howell.** Single, orange yellow.  
**Boston.** Clear, bronze dwarf, free flowering.  
**Bronze Queen.** Even shade of golden bronze. Free. Dwarf. Matures Oct. 10.  
**Carrie.** Deep yellow, a beauty (like Glory of Seven Oaks).  
**Chaldon.** Reddish crimson with gold tips; large flower.  
**Champion.** Bright ruby red; tinted yellow.  
**Cranfordia.** Deep bronze yellow.  
**Cranford White.** Pure white.  
**Harvest Home.** Deep bronzy yellow.  
**Ida K. Skiff.** Pompon, like Godfrey; brilliant bronze amber.  
**Isotta.** Early bronze; dwarf and free. Matures Oct. 10.  
**L'Argentuillais.** Pompon; deep chestnut red overlaid with yellow.  
**Lepactole.** Large bronze yellow.  
**Mayellen.** Cerise pink with yellow Anemone center. Matures Sept. 15-Nov.  
**Murillo.** Best pink among early hardies. Matures Oct. 12.  
**Normandie.** One of the best early hardy varieties, creamy white shading to a light shell pink. Matures Aug. 25 and later.  
**Normandie Yellow.** Earliest yellow to come into flower; bronzy yellow sport from Normandie.  
**Petite Louis.** Silvery mauve, very robust.  
**Winnetka.** Pure white, free flowering.  
**Wolverine.** Seedling from Normandie; bright yellow, excellent for pot plants; very early. Matures about Aug. 20  
**Ruth Cummings.** Reddish bronze; dwarf, compact growth; valuable for indoor growing.

---



---

## INDEX

	<i>Page</i>
Mum Hints.....	1
Selection of Buds.....	1
Large Flowering White.....	2 to 4
Large Flowering Yellow.....	4, 5
Large Flowering Pink.....	6
Large Flowering Bronze and Red.....	7, 8
Exhibition Varieties.....	8
Pompons, Large Flowering.....	9, 10
Pompons, Baby and Button types.....	11
Disbudding Varieties.....	12
Anemone Type.....	13, 14
Pot Plant Varieties.....	14
Single or Daisy Type.....	15
Hardy Field Plants.....	15
Hardy Early Varieties.....	16
Insecticides and Fertilizers.....	Inside back cover

# Fertilizers and Insecticides

---

## FERTILIZERS

- PURE SHEEP MANURE.** This is the best pure Sheep Manure we ever handled. The combings from the sheep's wool. Not to be compared with the average Sheep Manure that is offered. **\$3.00 per 100 lbs., 500 lbs. for \$13.75, 1000 lbs. for \$25.00, 1 ton \$45.00.**
- RAW HORN DUST.** 95 per cent available. 18 to 19 units of ammonia. No better fertilizer for quick results. **50 lbs. for \$4.75, 100 lbs. for \$8.50, 1 bag of 175 to 185 lbs. at \$7.50 per 100 lbs.**

## INSECTICIDES

- AGRI PAX.** A very good insecticide made from Pyrethrum flowers and a neutral soap. We recommend it. **1 gal. \$4.00, 5 gals. \$15.00.**
- RED ARROW.** The best all-around non-poisonous and cheapest insecticide we know of. Made from Pyrethrum flowers; it will not stain a White Orchid. **1 qt. \$6.00, 1 gal. \$22.00.**
- EVER-GREEN.** **Qt. \$3.85, gal. \$13.00, 5 gals. \$10.00 per gal.**
- FUMETOBAC.** Special fumigating tobacco powder. **50 lbs. \$8.00, 100 lbs. \$15.00.**
- NICO-FUME (Liquid).** 40 per cent nicotine. **½ gal. \$6.25, 1 gal. \$11.50, 1 drum, about 16 gals., \$156.25.**
- NICO-FUME (Paper).** For fumigating. **144 sheets, \$5.00, 288 sheets \$8.75.**
- NICO-FUME (Powder).** For fumigating. **5 lbs. \$3.75, 10 lbs. \$6.85.**

ALL OTHER INSECTICIDES ON HAND AT  
MARKET PRICES

### WATCH OUR ADS

in Display and Classified Departments of  
THE FLORISTS EXCHANGE  
THE FLORISTS REVIEW

COMMERCIAL  
'MUMS

*Wholesale Catalog*  
1930

ROMAN J. IRWIN  
◆ INCORPORATED ◆

*Plants • Cuttings • Bulbs • Seeds*

◆  
43 WEST 27TH STREET  
NEW YORK, N. Y.



*Write for our complete catalog  
of other*  
PLANTS, CUTTINGS, BULBS  
and SEEDS

Phones: BOGardus 2444-2445-2446