

## **Historic, Archive Document**

Do not assume content reflects current scientific knowledge, policies, or practices.



Babylon Dahlia  
Gardens

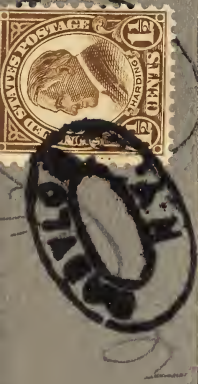
*"On The Sunrise Trail"*

OFFICE AND SHOW GARDENS OF  
15 ACRES ON THE MERRICK ROAD

BABYLON, L. I., N. Y.

1929

M-



LIBRARY  
RECEIVED  
★ MAY 9 1929 ★  
U. S. Department of Agriculture

U. S. DEPARTMENT OF AGRICULTURE

WASHINGTON, D. C.

BUREAU OF PLANT INDUSTRY  
Horticulture

M. R. N.

GOVERNMENT PRINTING OFFICE 132437

---

---

# DAHLIAS

## 1929 Wholesale Price List

### TO THE TRADE ONLY

We have discontinued our retail department so we can take better care of our rapidly increasing wholesale trade in bulbs and green plants and to better co-operate with our customers.

TERMS: F. O. B. Babylon, L. I., N. Y. 25% Cash with order, balance before shipping, except to Regular Customers, or those having established credit.

---

### PROMPT SHIPMENTS—GOOD CLEAN STOCK

Quotations are per 100 divisions of Field Grown Stock except where noted.  
Ten at 100 rate.

#### \*\* BEST FOR CUT FLOWERS

Our Stock is true to name, Dependable and Well Known  
Prices are Within Reason and Good Business Policy.

---

### FOR THE FLORIST

#### DAHLIAS FOR CUT FLOWERS

The Dahlia as a cut flower is becoming more popular every year, being in bloom and at its best when other flowers are on the wane.

We list only the best.

---

### EXHIBITION DAHLIAS

We advise a few of these fine Dahlias planted in a conspicuous part of your garden. They will attract a lot of attention and promote more sales of cut flowers.

---

---

## DECORATIVE TYPE

	ea.	
<b>AMUN RA</b> —Giant flower of coppery orange and gold tints. Distinct form. Very popular .....	.40	30.00
<b>**AMITYVILLE</b> —Very large flower of silvery-pink; very robust grower; long stems; free flowering .....	.25	20.00
<b>BASHFUL GIANT</b> — Apricot and amber. Enormous flower .....	.40	30.00
<b>BARBARA REDFERN</b> —An immense flower of great depth; fine stems. Color beautiful blending of old rose and old gold .....	2.50	
<b>BEATRICE SLOCOMBE</b> —A pleasing shade of red tipped yellow. Good stems; prolific bloomer .....	.25	20.00
<b>**BERTHA JOST</b> —Free flowering large dahlia on long stiff stems; base, deep sulphur shading to peach pink on outer petals with a suffusion of burnt orange toward the center .....	.30	25.00
<b>**BLUE LADY</b> —An unusual shade of bluish lavender; large flowers, fine stems .....	.50	
<b>BLACK JACK</b> —A very striking deep maroon almost black; long stems; large flower, fine .....	1.00	75.00
<b>BUENO</b> —Blending of burnt orange and gold with a suffusion of pink. A fine Autumn dahlia; flowers large .....	1.00	
<b>**BUTTERFLY</b> —Outer edges pinkish salmon shading to a delicate cream toward the center. Very attractive medium size flower; good stems .....	.40	30.00
<b>CALIFORNIA SUPERBA</b> —Very large pink flower, petals narrow and of a delicate pink shading to a white center. Profuse .....	.40	35.00
<b>**CALVIN COOLIDGE, JR.</b> —Rich rose-pink suffused salmon; fine stems; vigorous grower and profuse bloomer .....	1.00	85.00
<b>CAMBRIA</b> —Rich pink toning to lighter. Upright and vigorous grower, long stems. One of the very best .....	.30	25.00
<b>CARMENCITA</b> —Very striking in appearance; yellow very slightly tipped red. Good stems .....	.25	20.00
<b>CARMELLO (Callahan)</b> —Delicate amaranth pink. Deep, full flower. Very fine, long stems. Splendid .....	1.25	100.00
<b>CARUSO (Stillman)</b> —Amber shaded bronze, fine, large flower of splendid stems. Very free .....	.60	50.00
<b>**CASPER WARE (Bowen)</b> — Bright silvery violet rose; large size and very free flowering; fine cutter .....	.60	50.00
<b>*CATHERINE WILCOX</b> —White tipped cerise; very free, fine stems .....	.25	20.00

<b>CHAMPAGNE</b> —Clear champagne color. Vigorous and free bloomer on long stems. Very large .....	ea.	100
	.75	60.00
<b>CHARM</b> —Russet orange. Fine stems .....	.25	20.00
<b>CHAS. STRATTON (Stratton)</b> —One of the largest. Old gold shaded with old rose. A fine dahlia. Splendid stems .....	.50	40.00
<b>CHEMAR'S PURITY</b> —An immense perfect white decorative dahlia. Fine long stems. When flower first opens there is a suggestion of ivory in the center but gradually disappears as it matures. Petals long and straight .....	3.00	
<b>CHOU (Boston)</b> —Tyrian rose marked white. Giant flower .....	.50	40.00
<b>CITY OF LAWRENCE</b> — An immense flower, good stem, free bloomer; color, canary yellow .....	1.00	
<b>CLEMENTINA WING</b> — Bright red; free bloomer on fine stems .....	.20	15.00
<b>COPPER KING (Harding)</b> —Copper and red, Deep, full flower .....	1.25	100.00
<b>**COURONNE D'OR</b> —A beautiful decorative of shades of old gold; large and full flowers on fine stems. Of great substance and good keeping qualities .....	.85	75.00
<b>DAKOTA</b> —Fine shade of flame. Very fine. Popular .....	.25	20.00
<b>D'ARCY RYAN</b> —Violet purple tipped white; good stems, very striking .....	.25	20.00
<b>**DOROTHY ROBBINS</b> —Carrot buff; first class garden and cut flower .....	.25	20.00
<b>DOAZON</b> —Very large orange scarlet .....	.15	10.00
<b>DON WILLIAMS</b> —Soft lilac, tipped white. Very large .....	1.00	75.00
<b>DREAM</b> — Salmon and pink, amber glow; splendid form and good keeper .....	.15	10.00
<b>DR. E. R. BARTLEY (Schwarz)</b> —Seedling of Mrs. I. der ver Warner, only much larger and lighter shade. Stems sometimes slightly pendant. It is a whopper .....	3.50	
<b>DR. TEVIS</b> —Very large. Salmon rose and old gold .....	.25	20.00
<b>DUSKY PRINCESS</b> —Dark red, reverse of petals lighter; good stems .....	.25	20.00
<b>EAGLE ROCK BEAUTY (Broomhall)</b> —Pink and cream; in a class by itself. Giant flowers; very free flowering .....	2.50	200.00
<b>EARLE WILLIAMS</b> —Very large; red and white distributed. Popular cut flower ...	.75	60.00
<b>EASTERN STAR</b> —Saffron, shaded old gold flower; very fine .....	1.25	100.00
<b>**ELDORADO (Boston)</b> —Pure gold, very fine	.60	50.00
<b>ELEANOR MARTIN</b> — Mulberry. Giant pink, mauve and gold. Stiff stems .....	.75	60.00

	ea.	100
<b>EILEEN ROXBOROUGH</b> (Seal 1927)—The large blooms are held erect on fine, long stems. Color, intense rosy-pink with a suffusion of mauve and gold .....	.60	50.00
** <b>ELLINOR VANDERVEER</b> —Lavender pink, Immense flower; very fine .....	.50	40.00
** <b>ELITE GLORY</b> —Monster flower. Brilliant American Beauty red. Splendid .....	1.25	100.00
<b>ELIZA CLARK BULL</b> (Boston)—Deep, full flower, very large and free; one of the best whites. Very popular .....	1.25	100.00
** <b>EMPEROR</b> —Deep rose maroon, American Beauty shade; very large, long stems. Strong grower .....	.35	30.00
<b>E. T. BEDFORD</b> —Enormous flowers of silvery purple; free bloomer. Good stems ..	.60	50.00
<b>EVA COLE</b> —Large exhibition flower; good bloomer and stems. Color, red and gold	1.25	
<b>FAITH GARIBALDI</b> (Boston)—Satiny rosy pink; very large .....	1.00	
** <b>FLAMING METEOR</b> —Flaming orange-scarlet deepening to burnt orange at the center. Fine, long stems. Vigorous grower .....	1.00	90.00
<b>FLORENCE MICHELL</b> —Pretty combination of creamy-white and shell-pink. Flowers large, long stems; good keeper .....	.50	40.00
** <b>FLORENCE FINGER</b> —Deep phlox pink; fine cutter .....	.25	20.00
<b>FORDHOOK GOLDCREST</b> —Beautiful shade of salmon-pink, reverse deeper salmon, shading to a yellow in the center .....	1.25	
<b>FORDHOOK PEARL</b> —Finely formed, blooms freely; long stems; color, deep creamy-white, base of petals shading to pale yellow	1.25	
<b>FORT WASHINGTON</b> (Rindfleisch)—Tall, strong grower. Immense perfect flowers of deep maroon. Very fine .....	2.00	150.00
** <b>FRANCIS LAROCCO</b> — One of the finest yellow decorative dahlias; very fine, long stems; large, deep flower; vigorous grower; prolific bloomer .....	1.25	100.00
<b>FRAU SCHIFF</b> —Old favorite. Blending of apricot orange yellow and coral red; very fine .....	.25	20.00
<b>GIANT RUBY</b> —Vivid red; very large, full flowers; vigorous, upright grower. One of the best reds .....	.30	25.00
** <b>GLORY OF NEW HAVEN</b> —A delicate shade of orchid-pink of huge size; long, stiff stems	.20	15.00
** <b>GLORY OF SUNRISE TRAIL</b> (Babylon)—Maise yellow edged violet; giant flower. Fine stems. A seedling of the famous Sun-kiss. Will be one of the best sellers ...	2.50	150.00
<b>GOLDEN FLEECE</b> —Lovely golden yellow with a silver sheen over all, making it very attractive .....	1.00	85.00

	ea.	100
<b>GOLDEN JUBILEE</b> —In color, large bronzy orange; fine stems; vigorous grower but inclined to be dwarf .....	1.00	85.00
<b>GRACE SHERMAN (Brock)</b> — Soft pink. Fine, deep built flower. Very long stems. One of the best .....	.75	50.00
<b>**GRACE SPERLING</b> —Two tone, golden buff reverse amaranth purple. Splendid cut flower; perfect stems .....	.75	50.00
<b>GYPSYANNA (Babylon)</b> — Burnt orange, erect, long stems; very free. Giant .....	.75	50.00
<b>HALVELLA</b> — Old rose. Very large flowers on perfect stems .....	.50	40.00
<b>**HARVARD</b> —Bright, clear, deep crimson; good stems, fine form .....	.25	20.00
<b>HATHOR</b> —Vivid oriental colorings; predominating color is flame not red, but verging on deep orange; formation perfect; fine stems .....	1.00	85.00
<b>HERALD TRIBUNE ELITE (Kennedy)</b> — Splendid pure white of large size on perfect stems .....	.85	75.00
<b>HERCULES</b> —Coppery rose, fine, large flower .....	.40	30.00
<b>HIS MAJESTY</b> — Bright scarlet; very free; fine large flower .....	.60	50.00
<b>HORTULANUS FIET</b> —Salmon pink; large .....	.50	40.00
<b>INSULINDE</b> —Bronze orange, very fine ....	.40	35.00
<b>**JACQUELINE DARNELL</b> —Very large flowers on long stems; color at base, deep buttercup yellow with petals shaded and tipped rose. Good keeper when cut .....	.60	50.00
<b>**JERSEY'S BEACON</b> —Chinese scarlet; one of the very best. Enormous flower .....	.75	60.00
<b>**JERSEY'S BEAUTY</b> —Most everyone knows the sensational record made by this wonderful peer of the pinks. It stands in a class by itself. Very vigorous and clean grower on perfect stems. Cut flowers last a week. Will be universally grown. Better get started on this .....	.30	25.00
<b>JERSEY'S IDEAL</b> —Lovely shade of lavender-pink, although it varies to phlox-pink; flowers are large and prolific bloomer; vigorous grower, good stems .....	2.00	
<b>**JERSEY'S KING</b> —Carmine, good substance and stems. Splendid cut flower .....	.25	20.00
<b>JERSEY'S MAMMOTH</b> —Burnt orange, very massive flower (12 inches) .....	1.25	
<b>**JERSEY'S MONARCH</b> — Very large, deep flower on extra long stems. Deep salmon orange, yellow base .....	.75	60.00
<b>JERSEY'S PRIDE</b> —Buff-yellow and pink-hibition and cut flower .....	.30	25.00
<b>JERSEY'S SOVEREIGN</b> —Vigorous grower on very long stems. Salmon orange, full and deep. Good .....	.85	75.00
<b>**JESSIE DAY</b> —Deep golden-buff; fine for cutting; large .....	.30	25.00



	ea.	100
<b>JOHN MERRITT</b> —The best creamy white we have seen; very free bloomer on good stems .....	.30	25.00
<b>JUDGE ALTON B. PARKER</b> —Deep buff; large, fine for exhibition .....	.25	20.00
<b>JUDGE MAREAN</b> —Orange, yellow, red and gold. Very fine .....	.35	30.00
<b>JUNIOR (Seal)</b> —Enormous flower, soft, true lavender .....	.60	50.00
<b>KING TUT (Seal)</b> —Rich, dark, velvety crimson; very large, fine flower on splendid stems .....	.75	60.00
<b>KITTY DUNLAP</b> —Fine shade of American Beauty. Good form, long stems. Good keeper .....	.60	50.00
<b>LADY BABBIE</b> —Royal purple; exceptionally free .....	.50	40.00
<b>LADY BETTY</b> —Large, graceful, full flower; white suffused rose-pink .....	.30	25.00
<b>LAURA WEBER (Weber)</b> —The largest and snowiest white we ever saw. Fine stem and free flowering .....	1.25	100.00
** <b>LA GROSSE BETE (Marean)</b> —Full, perfect flower. Purple red. Fine .....	.40	30.00
** <b>LA MASCOTTE</b> —Two-tone effect of a silvery white with a deep violet reverse. Fine stems .....	.30	25.00
** <b>LE TOREADOR</b> —Brilliant red large flower. Fine for cutting .....	.30	25.00
<b>LILLIAN BALDWIN</b> —Color, deep rose-pink; good stems .....	.50	40.00
<b>LINDA VISTA</b> — Capucine-buff edged and shaded begonia rose; fine and dainty shaped flowers are borne on good stems; very prolific .....	1.25	100.00
<b>MAID OF THE MIST</b> —Deep cream shading to pink. Immense deep flower. Free bloomer. Great prize winner .....	.75	60.00
<b>MARGARET MASSON</b> —Silvery rosy pink; massive deep flower .....	.75	60.00
<b>MARGARET WOODROW WILSON (F&amp;M)</b> —Creamy white, suffused lavender pink; very deep, full flowers. Very free. Good .....	1.25	100.00
<b>MARIE HAUTMANN (Holland)</b> —Color like the old King of the Autumn. Medium sized flower, freely produced on perfect stems .....	.25	20.00
<b>MARJORIE HENNESSEY (Seal 1927)</b> —Very large perfect flowers on splendid stems. Amber heavily suffused rose; very fine .....	1.50	125.00
<b>MARMION (Tyler)</b> —Pure gold, bronze suffusion. Free bloomer on splendid stems. One of the largest .....	2.00	150.00
** <b>MARKET QUEEN (Babylon Dahlia Gardens)</b> A strikingly brilliant scarlet-red decorative tipped white of medium size, 4 to 5 inches. This dahlia has been in great demand by all New York florists for vase and basket work and has been a good money maker for us. We have decided to release it this year		

	ea.	100
and we believe it will be grown by every florist in the country as a standard bi-color dahlia; free bloomer on perfect stems. We have many letters of recommendations and we will gladly send you color photo upon request .....	.50	40.00
<b>MEPHISTOPHELES</b> — Deep red; sometimes tipped gold; fine for exhibition .....	.60	50.00
<b>MERRICK</b> —Score 92 A.D.S. Trial Grounds. Mahogany edged lighter. Large and free bloomer. Splendid seller. Good stems. Very much admired .....	.75	60.00
<b>MILLIONAIRE</b> —Immense flower. Lavender-pink. Perfect form .....	.30	25.00
<b>**MINA BURGLE</b> —Deep red; fine cut flower	.15	10.00
<b>MISS BRIDGETON</b> —Large flowers of a lovely shade of pink; good stem, vigorous grower .....	.60	50.00
<b>MORDELLA</b> —Apricot buff with a pink suffusion; fine stems; profuse bloomer .....	.75	60.00
<b>MOTHER</b> —Mauve pink, fine form .....	.30	25.00
<b>MR. EDWARDS (Harding)</b> —Very large deep full flowers. Amaranth-pink shaded deeper. Very fine .....	1.00	85.00
<b>**MRS. CARL SALBACH</b> —Lavender pink; very large, extra long stems. Flowers bring top price .....	.25	20.00
<b>MRS. DINGEE (Brock)</b> — Enormous flower. Coppery old rose, base yellow .....	.75	60.00
<b>**MRS. I. DE VER WARNER</b> —Orchid lavender, deep shade. Very vigorous grower on splendid stems. Free; superior cut flower	.25	20.00
<b>MRS. JOHN T. SCHEEPERS</b> —Chamois edged pink. Very large and free. Very popular	.30	25.00
<b>MRS. WM. WINCOTT</b> —Best yellow cut flower we know of; perfect form and stems ..	.30	25.00
<b>**MYRA VALENTINE (Mills)</b> —Immense flowers, 4-ft. stems. Orange buff .....		
<b>NATURE'S MASTERPIECE</b> —A blending of old rose, cinnamon, bronze suffused mulberry. Large flowers, good stems and splendid form .....	3.00	
<b>**NOBILIS (Doolittle)</b> —Red and white, very large, fine flower .....	.40	35.00
<b>OYSTER BAY BEAUTY (Devine) (Chemar)</b> Rich dark mahogany red, almost black; very large and one of the freest flowering varieties; very fine .....	1.00	75.00
<b>**OYSTER BAY RUBY</b> —A rich ruby red, perfectly formed decorative; fine, long stems. Never burns .....	2.00	175.00
<b>**PATRICK O'MARA</b> —Bronzy orange; fine cut flower .....	.25	20.00
<b>PATTY JANE</b> —Rose pink with delicate pink towards the center. Good stems and cut flower .....	.75	
<b>PAUL MICHAEL</b> —Enormous flower. Pure gold. One of the very best dahlias ever originated. Perfect for the garden .....	.40	35.00

	ea.	100
**PENATAQUIT—Golden bronze; perfect in growth, color and form; large flowers, prolific bloomer. Splendid for cutting . . . . .	.40	30.00
**PERELLA (Boston, 1927)—Bright rose pink shading lavender . . . . .	1.75	
**PINK LADY—Fine real pink cut flower . . .	.40	30.00
POLAR SNOW—Immense deep flower. Pure white . . . . .	.75	60.00
POP STEWART—Very large flower. Lilac pink;; delicate shade. Very good . . . . .	.75	60.00
**PRIDE OF CALIFORNIA—Deep, rich, red full flower, very fine, and best of this shade for cutting . . . . .	.15	12.00
PRIDE OF SAN FRANCISCO—Glowing salmon pink, very upright . . . . .	.60	50.00
**PRIDE OF STRATFORD—Giant decorative of a beautiful two-toned autumn shade; petals are deep cadmium orange shading to lighter orange yellow at base of petals; reverse, reddish bronze; petals slightly quilled; very fine, long stems . . . . .	1.50	125.00
PRIMULA REX—Very light cream or primrose yellow. Flowers immense, with every good quality; profuse bloomer; one of the finest in its class . . . . .	1.25	100.00
*PRINCESS PAT—Old rose. Very fine . . .	.30	25.00
QUEEN MARIE—A fine, large, beautiful dahlia of shrimp pink with yellow, suffusion, reverse of silver. Vigorous grower, fine stems . . . . .	2.00	
RADIO—Red and gold. Giant flower. Very good . . . . .	1.00	90.00
RED PLANET (Harding)—Very large, full flower. Deep red suffused gold . . . . .	.50	40.00
**ROBERT TREAT—American beauty rose color. Very large on fine stems . . . . .	.75	60.00
*ROBERT SCOTT (Brock)—Golden buff. Fine deep giant flower. One of the very best . . . . .	1.25	100.00
RODMAN WANAMAKER (Peacock) — lemon yellow marked and suffused gold and salmon-pink . . . . .	1.25	100.00
ROMAN EAGLE—Brilliant copper. Very large and free. Semi-dwarf . . . . .	.75	60.00
ROOKWOOD—Light rosy lavender. Large and very free. One of the best . . . . .	.75	60.00
ROSA NEL—Perfect in form and of a bright cerise color, held upright on long stems . .	.25	20.00
**ROSE FALLON—The sensational (Harding) dahlia of deep old gold. Giant flower on cane stem . . . . .	1.25	100.00
**SAGAMORE (Badetty)—Apricot buff; fine cut flower . . . . .	.60	50.00
**SAMSON—Variegated red and yellow. One of the very best . . . . .	.40	35.00
SANICHAN'S MONARCH (F&M)—Tyrian.. rose edged lighter. Fine stems . . . . .	.75	60.00

	ea.	100
<b>SANICHAN'S MAGNATE (F&amp;M)</b> — Pale amaranth tinged deeper reverse claret. Very large .....	1.00	
<b>**SANICHAN'S ROSE</b> —Clear rose pink; very large; good cutter .....	.40	35.00
<b>* * SANICHAN'S BLUEBIRD</b> —Beautiful violet-blue. Good stems, very odd in color, but pretty .....	.75	
<b>SANICHAN'S GEM</b> —Shade of old rose suffused amber, fading to lighter rose. Flowers twist at the points of petals, giving a stag-horn effect. Good stems .....	.50	40.00
<b>SAN MATEO</b> —A deep yellow heavily splashed scarlet; fine form and stem .....	.35	30.00
<b>SEQUOIX GIGANTEA</b> — Very large, full flower of buttercup yellow; tall and very robust flower; fine stems .....	.35	30.00
<b>**SHACKAMAXON</b> — Orange cinnamon in color; long, narrow petals resembling a chrysanthemum; splendid substance and good keeper .....	.50	40.00
<b>* * SHIRLEY OLIVER</b> —An immense flower of lovely light rose-pink with yellow at base of petals; fine stems and vigorous grower. Very dainty flower .....	.50	40.00
<b>SILVER QUEEN (Kennedy 88 A.D.S.)</b> —Silvery white, violet reverse. Very large and free .....	.75	60.00
<b>SNOWDRIFT</b> —Huge flower of perfect form. Pure white, very popular. Dwarf grower. Vigorous .....	.35	30.00
<b>STACEY TRENT (F&amp;M)</b> —Clear rosy pink; large and free .....	.50	40.00
<b>**SUNNY JERSEY</b> —Lemon yellow suffused gold; very free on fine stems; good cut flower .....	.60	50.00
<b>SUSAN G. TEVIS (Boston)</b> —Very large, perfect form, lilac with bluish sheen; vigorous grower, long, stiff stems .....	.50	40.00
<b>**SUNRISE TRAIL</b> —Brilliant scarlet and gold; large, free flowering and upright on good stems. Good keeper .....	1.00	
<b>**SYLVIA DICKEY</b> —Light phlox pink. Very free on fine stems. Splendid for cutting .....	.25	20.00
<b>TANFORAN</b> —Deep scarlet; very large; fine stems .....	.50	40.00
<b>THE TELEGRAM</b> —Orange yellow tipped white; very striking; flowers large, fine stems and a vigorous grower .....	3.00	
<b>**TRENTONIAN</b> —Brown coppery bronze. Immense flower on fine stems. Very fine ...	.60	50.00
<b>**VENUS</b> —White suffused lavender. Good cut flower. Very popular .....	.25	20.00
<b>* * VERDUN</b> —Yellow and scarlet. Very bright. Fine cut flower .....	.40	30.00
<b>VINELAND</b> —Russet orange suffuse apricot; fine stems; flowers large; good grower ...	.40	30.00

---

---

# DAHLIAS

## 1929 Wholesale Price List

### TO THE TRADE ONLY

We have discontinued our retail department so we can take better care of our rapidly increasing wholesale trade in bulbs and green plants and to better co-operate with our customers.

TERMS: F. O. B. Babylon, L. I., N. Y. 25% Cash with order, balance before shipping, except to Regular Customers, or those having established credit.

---

### PROMPT SHIPMENTS—GOOD CLEAN STOCK

Quotations are per 100 divisions of Field Grown Stock except where noted.  
Ten at 100 rate.

#### \*\* BEST FOR CUT FLOWERS

Our Stock is true to name, Dependable and Well Known  
Prices are Within Reason and Good Business Policy

---

### FOR THE FLORIST

#### DAHLIAS FOR CUT FLOWERS

The Dahlia as a cut flower is becoming more popular every year, being in bloom and at its best when other flowers are on the wane.

We list only the best.

---

### EXHIBITION DAHLIAS

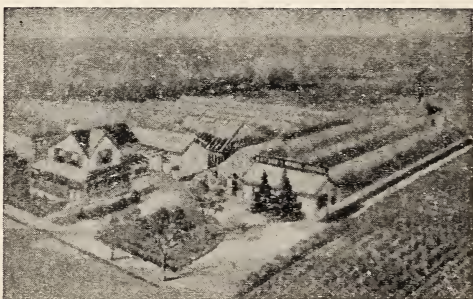
We advise a few of these fine Dahlias planted in a conspicuous part of your garden. They will attract a lot of attention and promote more sales of cut flowers.

---

---







VIEWS OF OUR PLANT, SHOWING  
PROPAGATING AND BULB HOUSES.  
ALL MODERN CONSTRUCTION.





## *New Dahlia, Market Queen*

No doubt the finest bicolor commercial Dahlia in existence. In great demand by all the prominent florists in New York City. A very useful Dahlia for either display, vase, or basket-work. Its keeping and shipping qualities are unsurpassed. This Dahlia should be grown by every florist in the country.

We have many letters of recommendation, and we will gladly send you copies upon request.

**Spring delivery.**

**Price: Field-grown divisions, 50 cts. each,  
\$40 per 100. We sell 10 at 100 rate.**

*Originated and Sold by*

**BABYLON DAHLIA GARDENS**

**Babylon, New York**



<b>WANDAMILLER (Rindfleisch)</b> — Purple tippe white (color like "Our Country" but unlike that variety it has fine, straight stems and blooms very freely.) Large flowers ..	1.25	100.00
<b>**WATCHUNG SUNRISE</b> — An extremely large, fine, full flower of a rich golden yellow suffused amaranth pink; long, strong stems .....	5.00	
<b>W. E. COOPER (Boston)</b> — Real live pink. Stiff stem; free .....	.40	35.00
<b>WILLIAM SELTSAM</b> —Fine large, full and deep flowers of a beautiful shade of crimson-red. Good stems .....	2.00	
<b>**WINFIELD SLOCOMBE</b> —Deep, full flower of golden-buff shading darker. Fine Autumn shades; long stems; good bloomer and keeper .....	.75	50.00
<b>WONDERLAND</b> —Flowers are very large and deep; petals twisted and curled, producing a striking two-toned effect. Color, violet maroon, reverse of petal silvery-rose ....	.75	60.00
<b>YELLOW PRINCESS</b> —A very fine, large yellow decorative; vigorous grower; fine stems	5.00	
<b>WORLD'S BEST WHITE</b> — Creamy white; large, deep flower of fine form and stems	1.00	75.00
<b>ZEUS</b> —Bright red tipped yellow. Stunning effect .....	1.50	

#### CACTUS AND HYBRID TYPES

	ea.	100
<b>ALEXANDER POPE (H.C.)</b> —A large bloom of a beautiful crimson shade, towards the center almost black. Good bloomer and fine stems .....	1.25	100.00
<b>AMBASSADOR</b> — Enormous flower; fine stems; in a class by itself. Straw edged pinkish. Won prizes all over the country. We have a fine stock of this variety ....	.75	60.00
<b>**ATTRACTION (H. C.)</b> — Large flower of orchid-pink. Sturdy and upright growth, long stems .....	.25	20.00
<b>**BABYLONIAN</b> —Wine crimson. The best in its color of this type. Very large, free and fine form; splendid stems .....	.75	60.00
<b>BALLET GIRL</b> —Buff orange tipped white, red striped white and solid buff on same bush; splendid type and large. Popular ..	.40	35.00
<b>**BIANCA</b> —Rosy lavender. Very fine .....	.20	15.00
<b>BILLIE BURKE</b> —Straw yellow, edged rosy lavender; very large .....	.30	25.00
<b>BOB PLEUSE</b> —Ox blood-red tipped white. Very striking; free flowering .....	.75	60.00
<b>**BRIDE'S BOUQUET (C.)</b> —Pure glistening white flowers of medium size, borne freely on long stems. Splendid for cutting ..	.15	10.00

	ea.	100
<b>**CALIFORNIA BEAUTY</b> —Splendid cut flower of medium size and free flowering. Deep buff .....	.30	25.00
<b>CALIFORNIA ENCHANTRESS (C.)</b> — A lovely shade of pink. Stems fine, free flowering .....	.30	25.00
<b>CHEMAR'S MASTERPIECE (C.)</b> —Flowers extra large, full and fine form; color orchid-pink. Seedling of Mrs. I. der ver Warner .....	2.50	200.00
<b>**CIGARETTE</b> —Red and white; 6-inch flower on very long, stiff stems. Very good for cutting .....	.40	35.00
<b>CINDERELLA (Boston)</b> —Very large buff and orange-pink flush. Upright .....	.40	35.00.
<b>**COUNTESS OF LONSDALE</b> —Salmon and rose. Fine garden and cut flower dahlias .....	.15	12.00
<b>COUNTESS OF CLAVERLEY, H.C. (Babylon Dahlia Gardens)</b> —We consider this the only real pink Hybrid cactus. A very strong vigorous grower and splendid stems. Flowers very large and of perfect type. You will like this one. Letters we have received from real growers bear out our claim of this superb dahlia .....	6.50	500.00
<b>DADDY BUTLER</b> — Carmine rose shaded lighter; large and attractive .....	.50	40.00
<b>DOROTHY DURNBAUGH</b> —Very large upright flower. Salmon pink .....	.40	30.00
<b>EAGLE ROCK SUNSHINE (Broomhall)</b> —In a class by itself; extra large and full; fine shade of yellow. Splendid stems .....	3.50	300.00
<b>ELSIE DANIELS</b> — Bluish lavender, center white; beautiful .....	1.00	85.00
<b>EL GRANADA</b> —Vivid orange, creamy reverse; very large .....	.75	60.00
<b>ELKRIDGE (H.C.)</b> —An immense white flower of fine formation and texture; profuse bloomer; fine stems .....	1.50	125.00
<b>ELSIE OLIVER (Boston)</b> — Exceptionally large salmon and pink; fine form upright .....	.75	60.00
<b>**EMMA MARIE</b> —Pink shading to white centre. Fine cut flower .....	.75	60.00
<b>ESTHER HUNT (H.C.)</b> — Vivid oriental orange, petals long with serrated tips. Large flowers and good stems .....	.40	35.00
<b>ETHEL T. SMITH (Broomhall)</b> —Very large flowers of white shading lemon yellow at centre. Popular .....	.30	25.00
<b>**FARNCOTT</b> —Aster purple, tipped white; very free on perfect stems. Splendid for cutting. Very distinct .....	1.00	85.00
<b>F. W. FELLOWS</b> —Orange terracotta. Popular .....	.40	35.00
<b>GEORGE WALTERS</b> —Very popular; salmon, gold and pink; free flowering .....	.25	20.00
<b>GLADYS BATES (C.)</b> —Large blooms of incurved petals of tan, reverse of rose; very attractive; good stems .....	.30	25.00

<b>GLADYS SHERWOOD (H.C.)</b> — An old favorite; immense blooms of cream-white; very long stems and a prolific bloomer ...	.25	20.00
<b>GLEN COVE BEAUTY (H.C.)</b> —A cross between Ambassador and Mrs. John T. Scheepers, retaining the good points of each. Same color as Mrs. J. T. Scheepers, chamois edged pink; fine, large flowers; cane stems; vigorous grower and free bloomer .....	2.50	200.00
<b>GOLDEN GATE</b> —Golden amber and bronze shadings .....	.20	15.00
<b>GUARDIAN (C.)</b> —Crimson scarlet; striking flower; good stems .....	.30	25.00
<b>ISLAM PATROL</b> —Very showy, Deep velvety scarlet tipped and flushed gold .....	1.00	85.00
<b>JEAN CHATOZ (H.C.)</b> —Beautiful Autumn color of golden bronze suffused nasturium red. Prolific bloomer and fine stems ....	.25	20.00
<b>J. H. ALEXANDER (C.)</b> — Golden yellow shading to salmon-pink; very pretty .....	.30	25.00
<b>JERSEY'S RADIANT</b> —Bitter sweet orange, 6-inch flower on fine stems .....	.60	50.00
<b>KALIF</b> —Scarlet, large; can't be beat as yet	.30	25.00
<b>KING SOLOMON (Andrews)</b> — Large full flower. Orange buff; very fine .....	.75	60.00
<b>LORNA DOONE (C.)</b> —A fine incurved cactus; yellow at the base of petals changing to pink tinted rose; good stems .....	.30	25.00
<b>**MARIPOSA</b> —A great favorite; lavender pink; large. One of the best .....	.50	40.00
<b>**MRS. RICHARD LOHRMANN</b> —Butter yellow, fine form and free on good stems ...	.40	30.00
<b>**MRS. EDNA SPENCER</b> — Delicate pinkish lavender; upright .....	.25	20.00
<b>MRS. ETHEL T. SMITH (H.C.)</b> —Creamy white shading to lemon tint in center; a giant flower without disbudding; very profuse bloomer on long stems held well above the foliage .....	.25	20.00
<b>MRS. F. W. STREET</b> —Crimson tipped white. Very showy .....	.60	50.00
<b>MRS. HAPPIE BEDFORD</b> —Exhibition flower of immense size; perfect form. The best of this type and color .....	1.00	85.00
<b>MRS. WARNAAR</b> —White flushed pink, very large; great favorite .....	.40	30.00
<b>MT. SHASTA (H.C.)</b> —A beautiful blending of shell-pink and yellow; long stems; a very graceful flower .....	.25	20.00
<b>NAGEL'S ROEM</b> —Naples yellow tinted chamois and salmon; finely formed flower on very long stems. Created quite a stir at the show of 1926 .....	1.50	125.00
<b>NICHU</b> —Clear light yellow; large, full flower	.60	50.00
<b>PIERROT</b> —Amber tipped white; large flower; pointed petals. A favorite .....	.25	20.00

	ea.	100
<b>RAPTURE (H.C.)</b> —Golden-buff in color; long, rather narrow petals; good form and fine for cutting .....	.25	20.00
<b>**RED CROSS</b> —Scarlet and gold. Very large and fine .....	.25	20.00
<b>RHENISHER FROSHINN (C.)</b> —Very fine flower, white at base, quickly changing to carmine-rose; upright stems; very popular .....	.20	15.00
<b>ROLLO BOY (Burns)</b> —Very large; strong stems. Amber shading to gold. Splendid .....	.85	75.00
<b>ROSALIE JONES (H.C.)</b> —Fine hybrid of pure yellow; upright stems; very free bloomer .....	.25	20.00
<b>ROYCROFT (Tyler 1927)</b> —Cinnamon buff deepening to russet. Very early and free. Splendid .....	1.25	100.00
<b>**SAMARITAN (H.C.)</b> —One of the finest medium white cactus flowers, as free a bloomer as Countess of Lonsdale; long stems. Fine for basket work .....	.20	15.00
<b>SEA HORSE (H.C.)</b> —Golden yellow with white tips. Good stem .....	.25	20.00
<b>**SHIRLEY OLIVER (Seal 1926)</b> —Light rose pink, yellow base. Very large .....	1.00	85.00
<b>SILVERADO (Seal 1927)</b> —White, delicate silver lavender centre. Shaggy and long petalled. Very attractive .....	2.50	225.00
<b>SISKIYOU (Broomhall)</b> — Extremely large flower; pink tinted mauve. Very fine ..	1.00	85.00
<b>SOLE MIO</b> —Pure yellow of very large size and fine form. Splendid .....	.75	
<b>SPORT (C.)</b> —Deep buttercup yellow, with buff shadings at center; fine stem; profuse, and fine for cutting .....	.50	40.00
<b>**STABILITY</b> —Upright grower; medium size; pink shaded lighter. Very good .....	.25	20.00
<b>SUNMAID (H.C.)</b> —Very large flowers of a beautiful shade of orange and gold. Deep flower and good stem .....	1.50	125.00
<b>**SUNSET GLOW (Peacock)</b> —Red and gold; very fine; medium sized flower. Fine for cutting .....	.25	20.00
<b>**SWEETBRIAR</b> — An old favorite, Delice pink; finely formed flowers, 6 inches ....	.30	25.00
<b>VIOLETTA</b> —Petunia violet. Splendid acquisition .....	1.00	
<b>VIOLA PHILLIPS</b> —One of the best ever introduced of this type and color. Salmon and mauve. Fine keeper .....	.60	50.00
<b>WIZARD OF OZ</b> —Enormous flowers. Amber pink and salmon. Splendid exhibition type .....	.85	75.00
<b>WOLF GANG VON GOETHE (H.C.)</b> —Salmon-pink; large and free flowering ...	.25	20.00
<b>**YELLOW KING</b> — Very large, full flower; sulphur yellow, tipped lighter .....	.20	15.00

## COLLARETTES AND SINGLE TYPE

	ea.	100
NEWPORT WONDER — Lovely shade of pink. Fine keeper. Artistic .....	.75	60.00
ROYALE (Col)—Deep crimson purple, white collar; very decorative .....	.10	8.00

## POMPONS

All of this type are fine for cutting.

	ea.	100
ALEWINE—Pink tinted lilac .....	\$ .15	\$8.00
AMBER QUEEN—Amber and orange .....	.15	8.00
ANNIE DONCASTER—Yellow suffused pink .....	.15	8.00
ARIEL—Buff tinted orange .....	.15	8.00
BRUNETTE—Crimson and white .....	.15	8.00
CATHERINE—Clear yellow .....	.15	8.00
CLARA HARSH—Yellow tipped crimson .....	.15	8.00
DAISY—Amber salmon .....	.15	8.00
DARK EYE—White tipped lavender .....	.15	8.00
DEE DEE—Lilac .....	.15	8.00
DOUGLAS TUCKER—Golden yellow crimson center .....	.15	8.00
ELIZABETH—Yellow and red .....	.15	8.00
FASCINATION—Fawn-pink .....	.15	8.00
GANYMEDE—Fawn .....	.15	8.00
GEORGE IRELAND—Mauve .....	.15	8.00
GIRLEE—Lilac-mauve .....	.15	8.00
GLAUSSE—Orange .....	.15	8.00
GLORIA—Maroon wine .....	.15	8.00
GLOW—Old rose to coral .....	.15	8.00
GOLDEN BEAUTY—Yellow .....	.15	8.00
GRAUS AUS WEIN—Crushed strawberry ..	.15	8.00
GRETCHEN HEINE—Blush white rose tips..	.15	8.00
GUIDING STAR—White .....	.15	8.00
HARRY SNOOK—White and pale pink .....	.15	8.00
HEDWIG POLLWIG—Red tipped white .....	.15	8.00
HESPERIA—Deep yellow to lighter shade ..	.15	8.00
JANET—Orange .....	.15	8.00
JESSICA—Yellow tipped red .....	.15	8.00
JOE FETTE—White .....	.15	8.00
KLEIN DOMITEA—Orange-buff .....	.15	8.00
LADDIE—Light crimson edged rose .....	.15	8.00
LASSIE—Yellow, edged and tipped rose .....	.15	8.00
LEADER—Lemon-yellow tipped rose-pink ..	.15	8.00
LITTLE BEAUTY—Shrimp pink .....	.15	8.00
LITTLE DEAR—Old rose to salmon .....	.15	8.00
LITTLE DOROTHY—Yellow and white .....	.15	8.00
LITTLE HERMAN—Red and white .....	.15	8.00
LITTLE SWEETHEART—Red tipped white..	.15	8.00
MADELINE—Primrose edged purple .....	.15	8.00
MIDGET—Salmon shaded peach .....	.15	8.00
NEATNESS—Fawn to lavender .....	.15	8.00
NEGERPRINS—Blackish maroon .....	.15	8.00
NEMESIS—Maroon and white .....	.15	8.00
NERRISA—Pink .....	.15	8.00
PRINCE CHARMING—Pink .....	.15	8.00
ROTHOUT—Dark crimson .....	.15	8.00
SANTOY—White tipped carmine .....	.15	8.00
SNOWBIRD—White .....	.15	8.00
SNOWCLAD—White .....	.15	8.00
STAR OF THE EAST—Pure White .....	.15	8.00
SUBEAM—Bright crimson scarlet .....	.15	8.00
SUNSHINE—Vermillion scarlet .....	.15	8.00

## PEONY TYPE

		ea.	100
AURORE (Peo)—Large flower of orange buff. Good stems and keeper; very fine ..	.20		15.00
CAMILLE FRACHON (Peo)—Glistening garnet. Very attractive .....	.40		30.00
DREAMLIGHT (Peo)—Rose pink, base golden yellow; large and free .....	.60		50.00
GORGEOUS (Peo) (Boston) — Very large, Scarlet and gold .....	.75		50.00
LOUISE SCHWARTZ (Peo) — Buff flushed mallow pink. Very free, fine for decorations .....	.80		25.00
PEARL RUGGLES (Peo)—Carmine suffused pink, white base; very artistic .....	.30		25.00
SULPHERA (Peo dec)—Light yellow, shaped like a Chrysanthemum; fine .....	.30		25.00
UNCLE SAM (Peo)—Immense golden apricot	.75		60.00
U. S. A.—Very large; orange buff; very popular .....	.60		50.00

## BALL OR SHOW TYPE

		ea.	100
ACQUISITION (S)—Deep lavender; fine ...	.15		10.00
** ARABELLA (S)—Pink and buff; an old favorite .....	.15		10.00
AUGUST MEGAR (S)—Pansy purple. Perfect form .....	.20		15.00
CUBAN GIANT (S)—Deep crimson; large ..	.15		10.00
** ELSIE BURGESS (S)—White tipped and suffused lavender. Fine for design work. Very long straight stems .....	.15		8.00
** GOLD MEDAL (S) — Scarlet suffused gold. Perfect type .....	.30		25.00
JOHN BENNETT (S)—Perfect form; deep buff and red .....	.20		15.00
** MAUD ADAMS (S)—Mauve pink and white; very fine .....	.15		10.00
VIVIAN (S)—Dark magenta, flashed cerise. Large, popular .....	.15		8.00
** WHITE SWAN (S)—Most reliable white for cutting in this type .....	.10		7.00
W. H. WILLIAMS (S)—Maroon red; good form, fine for cutting .....	.15		10.00
W. W. RAWSON—White shading amethyst. Splendid form and large size .....	.15		10.00

## DAHLIA PLANTS FOR 1929

All plants will be shipped in Growell Peat Pots. Do not bind the roots. Roots grow into and thru the walls of the pot—free, unhampered, vigorous. Advances the flowering period 10 days to 2 weeks. Regulates temperature—nightly radiation of heat slow and uniform, doing away with chilling. No check in growing when transplanted, both pot and plant, planted in fields or beds without disturbing the roots.

Maintain correct moisture content by capillary attraction which keeps even balance of moisture in soil. No danger of over-watering or losing necessary water; absorbs as much as nine times their own weight in moisture.

Before planting you can dip these pots containing the plant in liquid manure. This is all the feed they need for thirty days to sixty days.



## OUR GREEN PLANTS ARE

Not just ordinary rooted cuttings, but good strong plants, grown cool, well rooted, ready to grow right on, produce exhibition flowers and tubers free from disease. We have many repeat orders and our orders for them are increasing each year. Try them and be convinced.

Packed right to ship long distance and guaranteed to arrive in good condition.

All orders for less than \$5.00 add 50%.

	Per Ea.	Doz.
ALEXANDER POPE .....	.75	7.50
ARISTOCRAT (Boston) .....	1.00	10.00
AZTEC GLORY (Broomhall) .....	1.00	10.00
BARBARA REDFERN (Redfern) .....	.75	7.50
BARBARA WEAR (Seal) .....	1.00	10.00
BETTY IVINS (F. & M.) .....	1.00	10.00
CHAVACANO (Advance D. G.) .....	2.00	20.00
CHARLOTTE LaFRENZ (Seal) .....	1.00	10.00
CHEMAR'S MASTERPIECE (Chemar) ....	1.00	10.00
CHEMAR'S PURITY (Chemar) .....	1.00	10.00
CITY OF TRENTON (Prentice-F. & M.) ...	1.00	10.00
COLOR SERGEANT (Hall) .....	1.00	10.00
COUNTESS OF CLAVERLY (Smith-BDG). 3.00	30.00	
CROWN PRINCESS LOUISE (Pelicano) ...	1.00	10.00
DON JUAN (Harding) .....	2.00	20.00
DOROTHY DIX (Seal) .....	1.00	10.00
DORIS DUDLEY (F. & M.) .....	1.00	10.00
EAGLE ROCK BEAUTY (Broomhall) .....	1.00	10.00
EAGLE ROCK GEM (Broomhall) .....	3.50	35.00
EAGLE ROCK JEWEL (Broomhall) .....	2.00	20.00
EAGLE ROCK SUNSHINE (Broomhall) ...	1.00	10.00
EASTERN STAR (Maytrott) .....	.75	7.50
EDNA FERBER (F. & M.) .....	1.00	10.00
ELITE GLORY (Kennedy) .....	.75	7.50
E. E. HANBURY (Harding) .....	1.00	10.00
ELLINOR MARTIN (Pelicano) .....	.50	5.00
ELKRIDGE (Griffith) .....	1.00	10.00
ELIZA CLARK BULL (Boston) .....	.75	7.50
ESTHER NELSON (F. & M.) .....	1.00	10.00
EVA COLE (Murphy) .....	.75	7.50
FAITH GARIBALDI (Boston) .....	.75	7.50
FARNCOTT (Davis)—Aster purple cactus tipped white. Very distinct .....	.60	6.00
FLAMELICH (Murphy) .....	1.00	10.00
FORDHOOK CHEVALIER (Burpee) .....	.75	7.50
FORDHOOK GOLDCREST (Burpee) .....	.75	7.50
FORDHOOK PEARL (Burpee) .....	.75	7.50
FORDHOOK SUNSHINE (Burpee) .....	.75	7.50
FORT WASHINGTON (Rhindfleisch)—Very large blackish maroon. Perfect form. Fine stems .....	1.00	10.00
FRANCIS LAROCCO (Rhindfleisch) — Fine yellow decorative. Very extra .....	.75	7.50
F. T. D. (F. & M.) .....	1.00	10.00
GLEN COVE BEAUTY (Stango-BDG) ....	1.00	10.00
GLORY OF SUNRISE TRAIL (Babylon D. G.) dec.—Maise yellow edged violet; giant flower. A splendid stem. A seedling of the famous Sunkiss. Will be one of the best sellers .....	1.00	10.00
GRANDOLA (Broomhall) .....	1.00	10.00

	Per .Ea.	Doz.
GOLDEN FLEECE (Seal) .....	.75	7.50
HARRY MAYER (Reed) .....	1.00	10.00
HATHOR (Seal 1927) .....	.75	7.50
IDA PERKINS (Perkins) .....	1.00	10.00
ITALIAN SUNSET (Beatrice) .....	1.00	10.00
JANE COWL (Downs) .....	2.50	25.00
JEAN HARE (F. & M.) .....	1.50	15.00
JERSEY'S BEACON (Waite) .....	.50	5.00
JERSEY'S BEAUTY (Waite) .....	.25	2.00
JERSEY'S IDEAL (Waite) .....	1.00	10.00
JERSEY'S MAMMOTH (Waite) .....	.60	6.00
JERSEY'S MASTERPIECE (Waite) .....	1.50	15.00
JERSEY'S SOVEREIGN (Waite) .....	.60	60.00
JOY (Boston) .....	2.00	
KEMP'S FORT MONMOUTH (Kemp) ....	2.50	25.00
KEMP'S VIOLET WONDER (Kemp) ....	2.50	25.00
LINDA VISTA (Broomhall) .....	1.00	10.00
MARION BROOMHALL (Broomhall) .....	1.00	10.00
MARGARET MASSON (F. & M.) .....	.50	5.00
MARGARET WOODROW WILSON (F. & M.) .....	.75	7.50
MARJORIE HENNESSEY (Seal 1927) ....	1.00	10.00
MARMION (Tyler) .....	1.00	10.00
MAY TROWER (Seal) .....	1.50	15.00
MORDELLA (King) .....	.50	5.00
MR. EDWARDS (Harding) .....	.75	7.50
MRS. E. E. LEEHAM (Boston) .....	2.50	25.00
MY MARYLAND (Downs) .....	2.50	25.00
NAGEL'S ROEM (Holland) .....	.75	7.50
NANCY HARE (F. & M.) .....	1.00	10.00
NANCY SUE LANG (Broomhall) .....	.75	7.50
NATURE'S MASTERPIECE (White)—A sen- sational new dahlia .....	1.00	10.00
OYSTER BAY BEAUTY (Chemar) — Rich dark glowing red. Very free; fine stems. Does not burn. As large as Elite Glory ..	.75	7.50
OYSTER BAY RUBY (Chemar) .....	1.00	10.00
ORANGE WONDER (Schling) .....	1.00	10.00
PERELLA (Boston) .....	.75	7.50
POP STEWART (F. & M.) .....	.50	5.00
PRIMULA REX (Broomhall) .....	.75	7.50
PRIDE OF STRATFORD (Meacham & Sher- man) .....	.75	7.50
QUEEN OF THE GARDEN BEAUTIFUL .	1.00	10.00
QUEEN MARIE (Formerly The Autocrat) (Harding) .....	1.00	10.00
RADIO (Campson) .....	.50	5.00
RED SOX (F. & M.) .....	1.50	15.00
REGAL (Boston) .....	2.50	25.00
RODMAN WANAMAKER (Peacock) .....	.75	7.50
ROLLO BOY (Pelicano) — Old gold shaded amber. Fine .....	.60	6.00
ROMAN EAGLE (F. & M.) .....	.50	5.00
ROSE FALLON (Harding) .....	.75	7.50
SALBACH'S WHITE (Salbach) .....	.75	7.50
SANTA ANNA (Pelicano) .....	1.00	10.00
SAGAMORE (Badetty) .....	.25	2.50
SAN CLEMENTE (Advance D. G.) .....	1.50	15.00
SHIRLEY EILEEN SHATTUCK (Murphy). .	1.00	10.00
SILVERADE (Seal) .....	.75	7.50
SISKIYOU (Broomhall) .....	.60	6.00

	Per Ea.	Doz.
SUNMAID (Hyb. cac.) (Spacher)—Orange and gold. Very large. Profuse .....	.60	6.00
THE TELEGRAM (Marshall) .....	.85	8.50
WALDHEIM SUNSHINE (Peacock) .....	2.50	25.00
WANDAMILLER (Rhindfleisch) .....	.75	7.50
WATCHUNG SUNRISE (Smith) .....	2.00	20.00
WONDERLAND (Bissell) .....	.75	7.50
YANKEE KING (Wood) .....	1.50	15.00
YELLOW PRINCESS (Frazer) .....	2.00	20.00

**DAHLIAS FOR COUNTER TRADE**

	100	1000
MIXED .....	\$6.00	\$55.00
MIXED FANCY .....	7.50	70.00
MIXED, FANCY, EXTRA .....	12.00	100.00
TO COLOR—Red, pink, yellow, white; equal quantities .....	6.50	60.00

