

Magazine Street originally laid out 20 feet wide, in 1706 M. John Vanderhorst added 25 feet to it which makes this <sup>part of the</sup> Street now, 45 feet wide -

Lot N<sup>o</sup> 32, in Mazyck's partition plan

Now belonging to Dr. Samuel Wilson

200 feet square reserved by the Legislature, in the Law for incorporating the City of Charleston, passed the 13<sup>th</sup> August 1703 - for a Goal

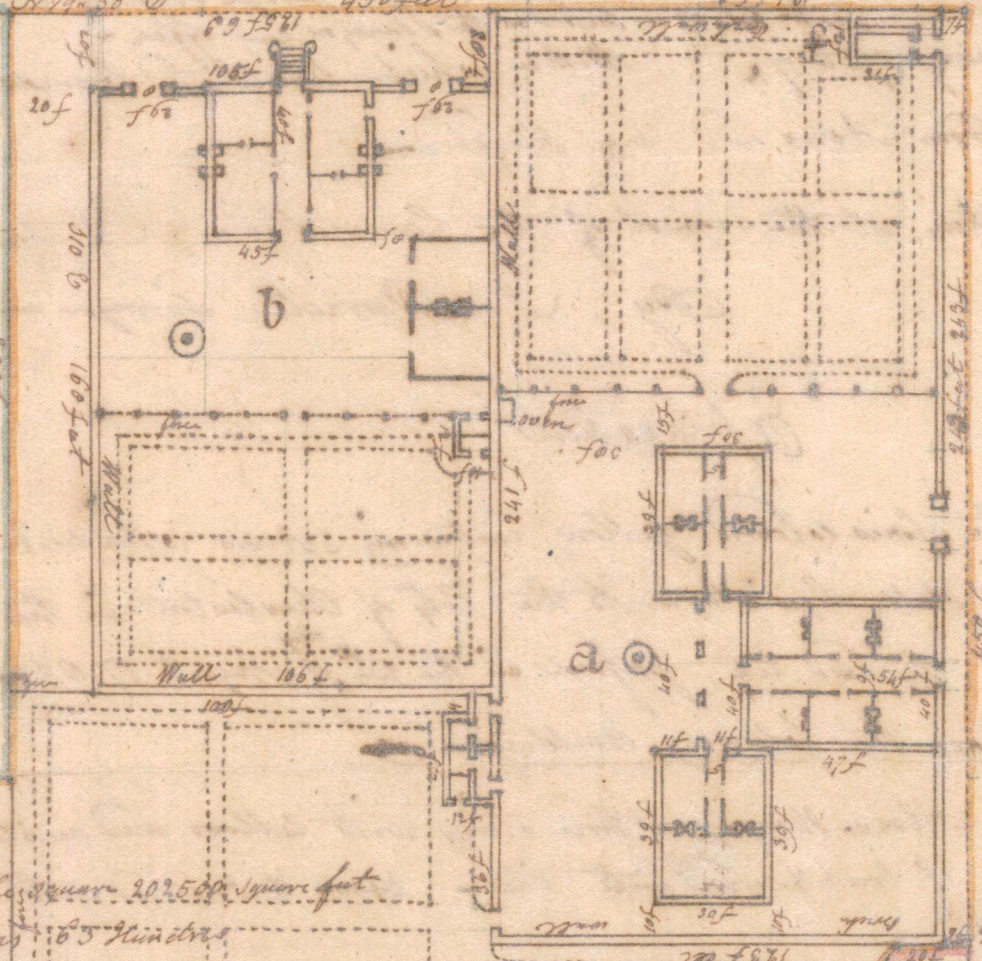
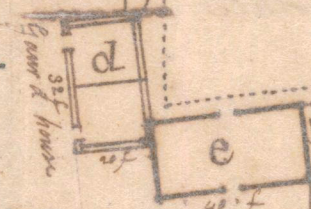
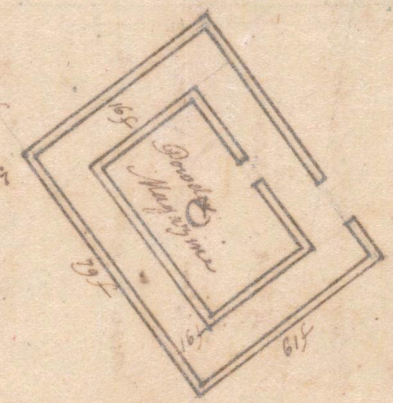
B containing Oct. 91<sup>th</sup>.

Lot N<sup>o</sup> 31

6 Lots City of Charleston

Contents of the whole square 202500 square feet equal to 4 Acres 18<sup>5</sup> Minutes that part belonging to the Public as reserved by the Legislature 1740 63 square feet equal to 4 Acres 1<sup>1</sup> Minutes

A containing Oct. 10<sup>th</sup>.



Low grounds formerly Mazyck's Marsh belonging to the Public

10 feet Content 27637 square feet = 62<sup>1</sup>/<sub>2</sub> Acres

Queen Street

Magyck Street 20 feet wide

173-01 scale 50 feet per Inch

280  
125  
124

30  
25  
17

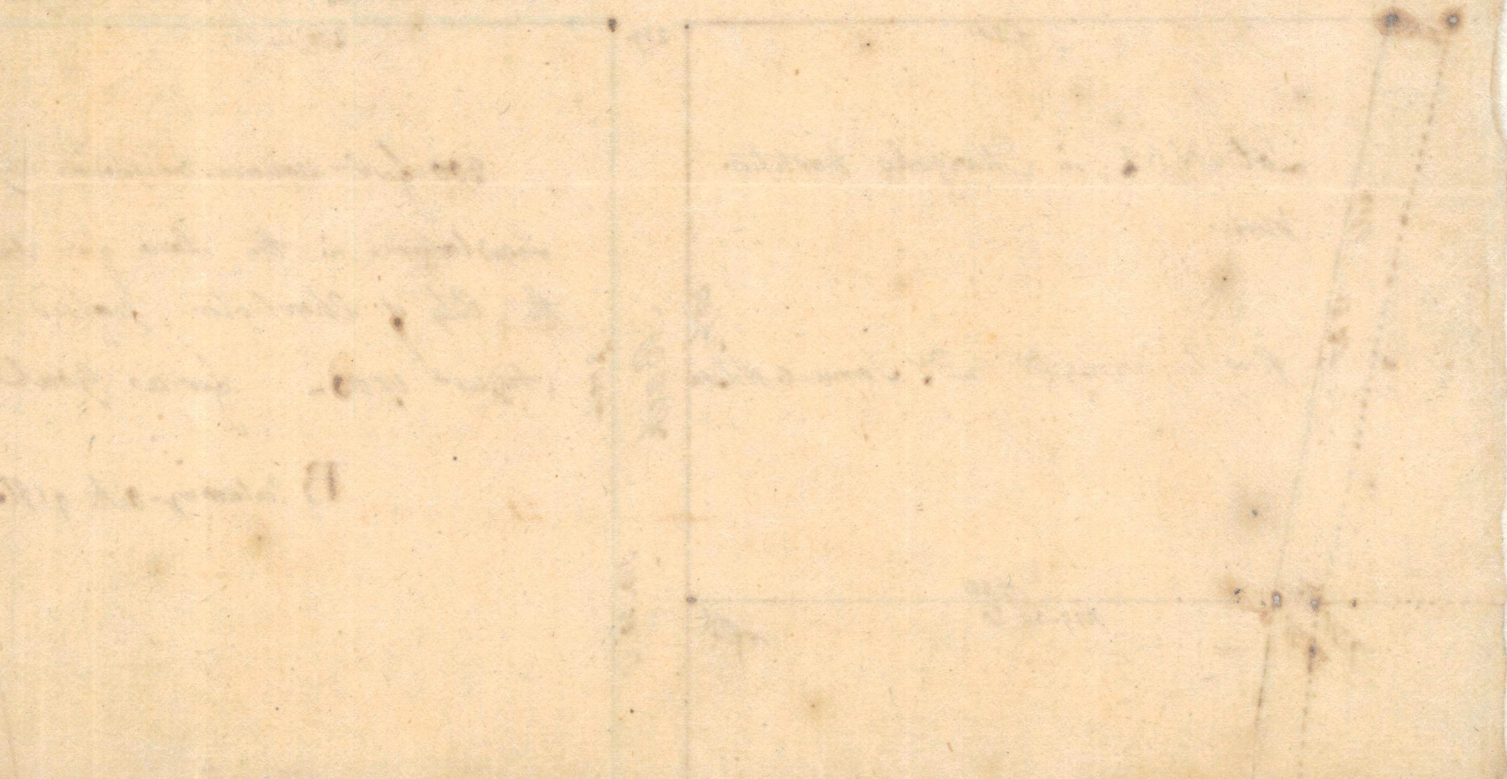
A Plan of that part of the City Lands lying and situated in the square, in the City of Charleston, formed by Magazine, Queen and Beach Streets - in Ward No. 4 - Being part of Four Acres of Lands appropriated by the Government, in 1600 for a common Small place, in October 1609, within the limits and bounds ascertained by George Hunter Surveyor General in February 1736/7 - Within which limits and bounds, is found to contain Four Acres and one Hundred -

From a Survey taken, at the request of the Committee on City Lands - in June 1799 - By J. Powell Surveyor -

Explanation

- A As bounded by the lines coloured yellow, containing 3 Acres 18 Hundreds was given by the State Legislature to the City of Charleston in the act for Incorporating the said City, passed on the 13<sup>th</sup> of August 1703 - on which land are the following Buildings -
  - a A Door or Alms House of three stories, with Cellars and subterraneous Cells - of brick covered with tiles - seen & enclosed with a brick wall -
  - b A brick building of three stories with Garrets and Cellars - covered with slate - ~~and~~ <sup>& enclosed with a brick wall</sup> erected by the City Council for a Work-house, now rented by the state and used for the District Goal or prison -
  - c A Powder Magazine - of brick - see
  - d The Guards house to the said Magazine one story of brick, now used by the Commissioners of the Poor as an out Hospital for the reception of persons suspected of infectious and malignant or contagious Diseases
  - e An addition to the above ~~and~~ <sup>of</sup> one story - of woods -
  - f A Cistern to keep the oil for the City lamps - of brick & covered with tiles
- B As bounded by the lines coloured blue, is a parcel of land 200 feet square reserved, by the Legislature (in the <sup>and</sup> Law to incorporate the City) for a Goal - containing 91 Hundreds of an Acre.

C A parcel of land chiefly low & flat, originally Marsh land, belonging to the heirs of Paul Muzgels do<sup>r</sup> and is part of 32 Acres 2 Acres and 20 perches of land originally granted to James Moore on the 1<sup>st</sup> October 1690 - containing 62 Hundreds four Acre



A Plan of that part of the City Lands, lying in the square formed by Magazine, Queen and Beach Streets - whereon the Door house is situated -

Ward No. 4

Richardson from James Moore

June 50

1736

Ward 4 No. 35

1735