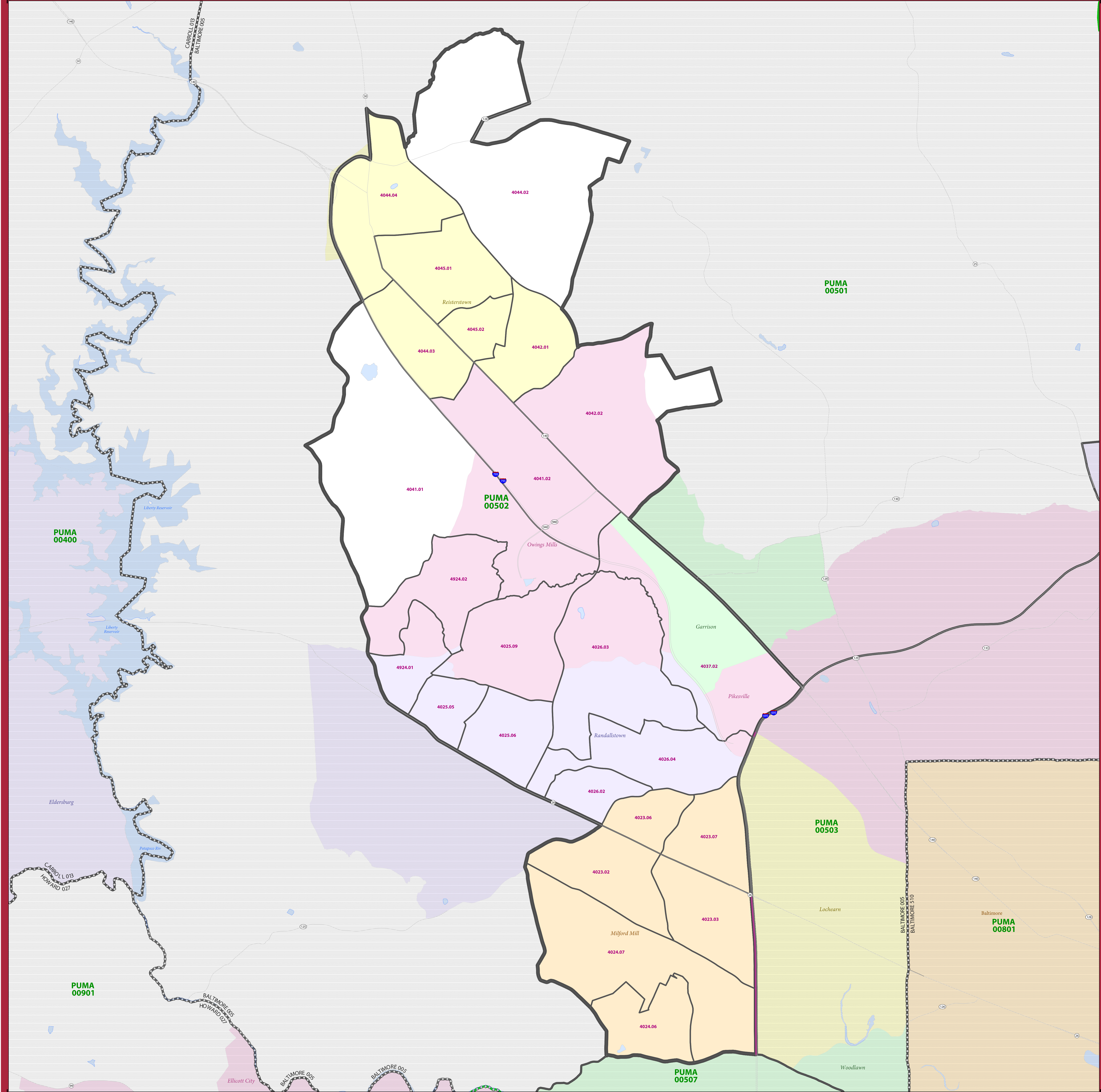


**2010 CENSUS - PUMA REFERENCE MAP: Baltimore County--Randallstown (East), Owings Mills, Milford Mill & Reisterstown**



**LEGEND**

| SYMBOL DESCRIPTION                          | SYMBOL          | LABEL STYLE       |
|---|-----------------|-------------------|
| International                               | ☆☆☆☆☆           | CANADA            |
| Federal American Indian Reservation         | ■ ■ ■ ■ ■ ■ ■ ■ | L'ANSE RES        |
| Off-Reservation Trust Land                  | ■ ■ ■ ■ ■ ■ ■ ■ | T1880             |
| Alaska Native Regional Corporation          | ▲▲▲▲▲▲▲▲        | NANA ANRC         |
| Public Use Microdata Area (PUMA)            | ■ ■ ■ ■ ■ ■ ■ ■ | <b>PUMA 00300</b> |
| Census Tract                                | ———             | 183.01            |
| State (or statistically equivalent entity)  | ▨ ▨ ▨ ▨ ▨ ▨     | NEW YORK 36       |
| County (or statistically equivalent entity) | ▩ ▩ ▩ ▩ ▩ ▩     | ERIE 029          |
| Minor Civil Division (MCD)                  | - - - - -       | Bristol town      |
| Consolidated City                           | ○ ○ ○ ○ ○ ○ ○ ○ | MILFORD           |
| Incorporated Place <sup>2</sup>             | ■ ■ ■ ■ ■ ■ ■ ■ | Davis             |
| Census Designated Place (CDP) <sup>2</sup>  | ■ ■ ■ ■ ■ ■ ■ ■ | Incline Village   |

| DESCRIPTION   | SYMBOL  | DESCRIPTION          | SYMBOL          |
|---|---------|----------------------|-----------------|
| Interstate  | — [I] — | Water Body           | ■ ■ ■ ■ ■ ■ ■ ■ |
| U.S. Highway  | — [2] — | Pleasant Lake        | ■ ■ ■ ■ ■ ■ ■ ■ |
| State Highway   | — [3] — | Outside Subject Area | ■ ■ ■ ■ ■ ■ ■ ■ |
| Nonvisible Boundary or Feature Not Elsewhere Classified | ⋯ ⋯ ⋯   |                      |                 |

Where international, state, and/or county boundaries coincide, the map shows the boundary symbol for only the highest-ranking of these boundaries.

Geographic areas outside the subject PUMA are labeled only as space allows.

<sup>1</sup> MCD boundaries are shown in the following states in which some or all MCDs function as general-purpose governmental units: Connecticut, Illinois, Indiana, Kansas, Maine, Massachusetts, Michigan, Minnesota, Missouri, Nebraska, New Hampshire, New Jersey, New York, North Dakota, Ohio, Pennsylvania, Rhode Island, South Dakota, Vermont, and Wisconsin. Only governmental MCDs in the subject PUMA are labeled.

<sup>2</sup> Place label color corresponds to the place fill color.

Label colors: Davis Davis Davis Davis Davis Davis

**SUBJECT AREA COUNTIES ON MAP SHEET**  
24005 Baltimore

Public Use Microdata Areas (PUMAs) are delineated based on the results of the 2010 Decennial Census; all other legal boundaries and names are as of January 1, 2010. The boundaries shown on this map are for Census Bureau statistical data collection and tabulation purposes only; their depiction and designation for statistical purposes does not constitute a determination of jurisdictional authority or rights of ownership or entitlement.

Geographic Vintage: 2010 Census (reference date: January 1, 2010)  
Data Source: U.S. Census Bureau's MAI/TIGER database (ACS13)  
Map Created by Geography Division: December 12, 2013

Projection: Albers Equal Area Conic  
Datum: NAD 83  
Spheroid: GRS 80  
1st Standard Parallel: 39 11 33  
2nd Standard Parallel: 39 24 60  
Central Meridian: -77 14 14  
Latitude of Projection's Origin: 37 53 11  
False Easting: 0  
False Northing: 0

Scale: 1:250,000  
The plotted map scale is 1:250,000