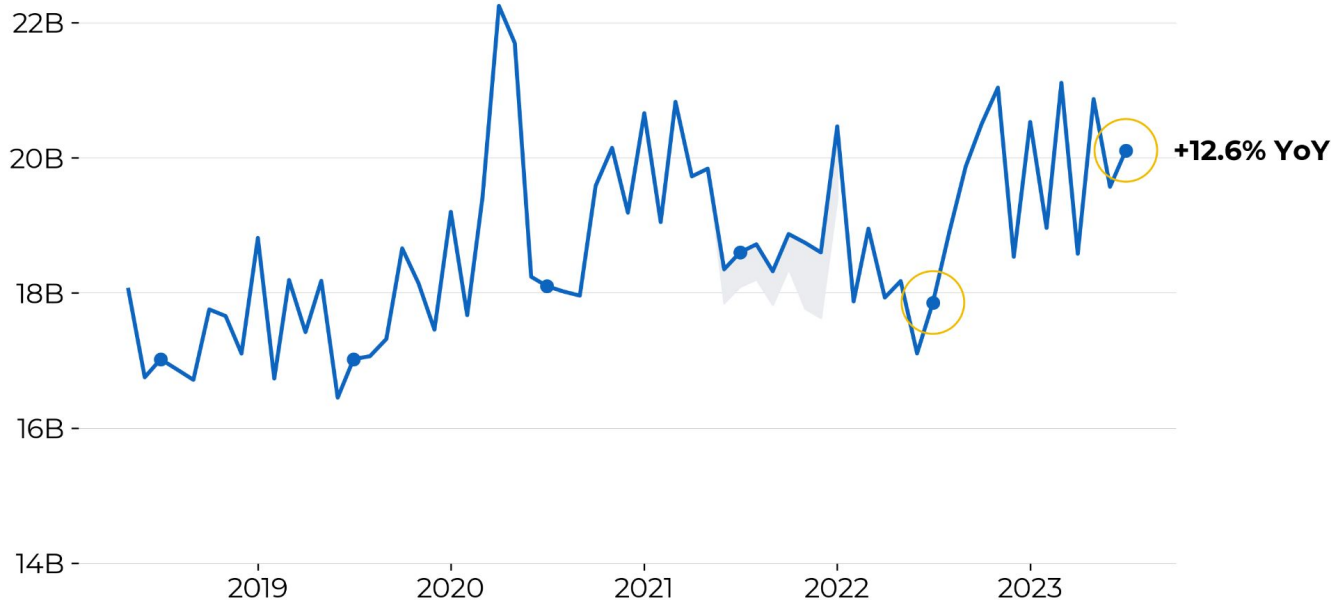


# **July 2023 Wikimedia movement metrics**

**Content interactions (July):** Across Wikimedia, there were 20.1B content interactions in July, a 12% YoY increase



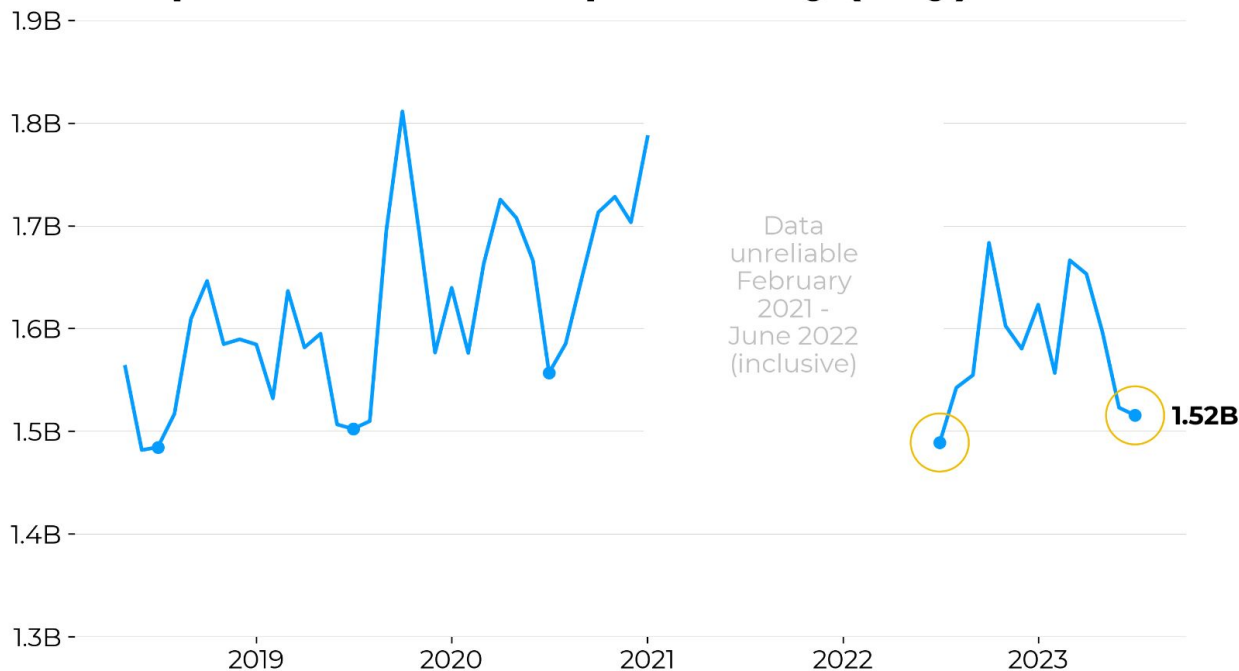
Graph Notes: Created by Maya Kampurath 2023-08-23 using data from <https://github.com/wikimedia-research/Reader-movement-metrics>

Explore [Content Metrics](#), [Readers Metrics](#) and [Editors Metrics](#) in Superset. Monthly aggregates are also available in Sheets: [Editors & Content](#) and [Readers](#). For metric definitions, see the [Product data glossary](#). For questions: [#insights-and-data](#)

# Unique devices increased by 1.7% YoY

This is our first month of reliable year-over-year data after the unique devices [overcount issue](#). Compared to pre-Covid (July 2019), unique devices increased 0.8%

## Unique Devices - Wikipedia Only (July)



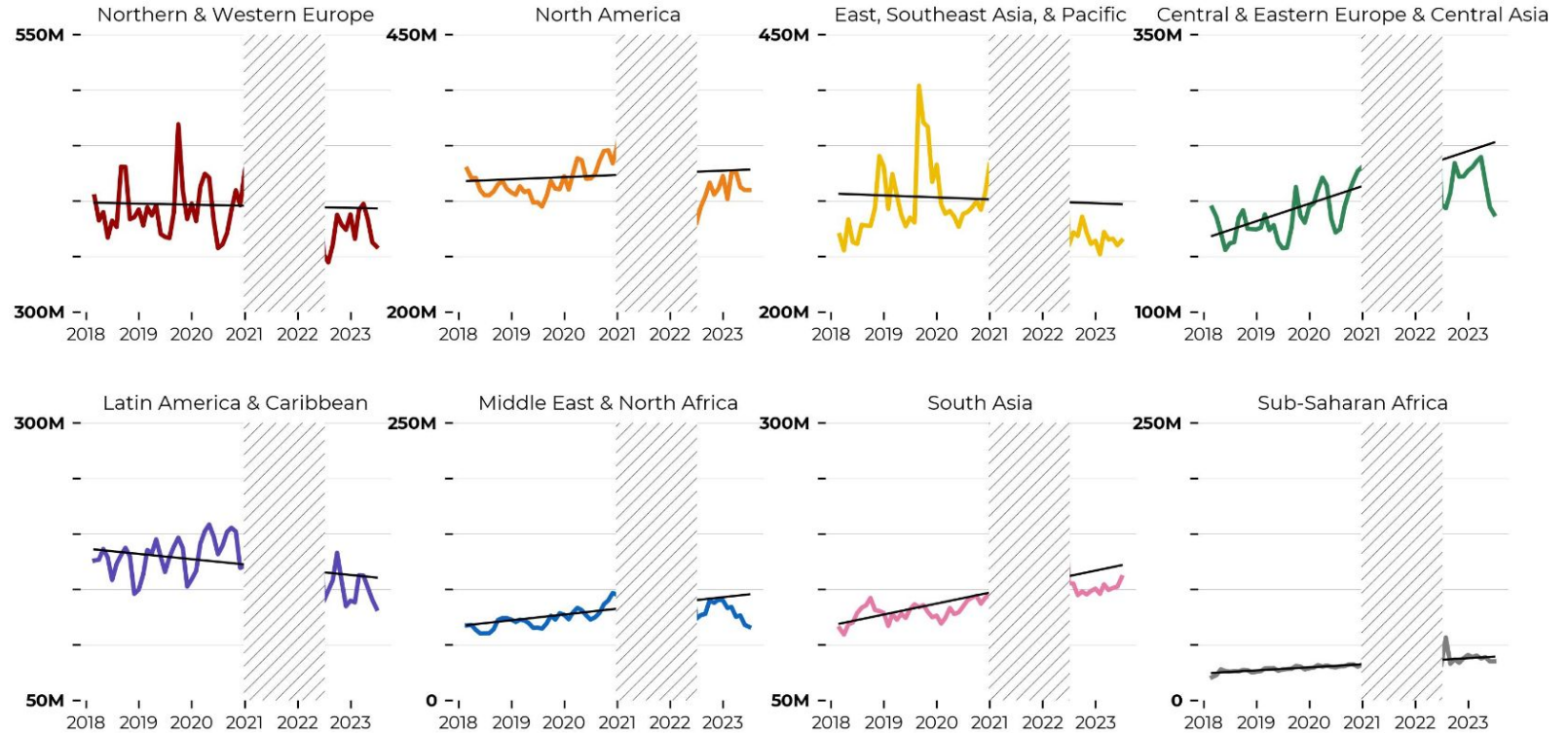
Graph Notes: Created by Maya Kampurath 2023-08-31 using data from <https://github.com/wikimedia-research/Readers-movement-metrics>

Explore [Content Metrics](#), [Readers Metrics](#) and [Editors Metrics](#) in Superset. Monthly aggregates are also available in Sheets: [Editors & Content](#) and [Readers](#).

For metric definitions, see the [Product data glossary](#). For questions: [#insights-and-data](#)

# Regional Unique Devices (July)

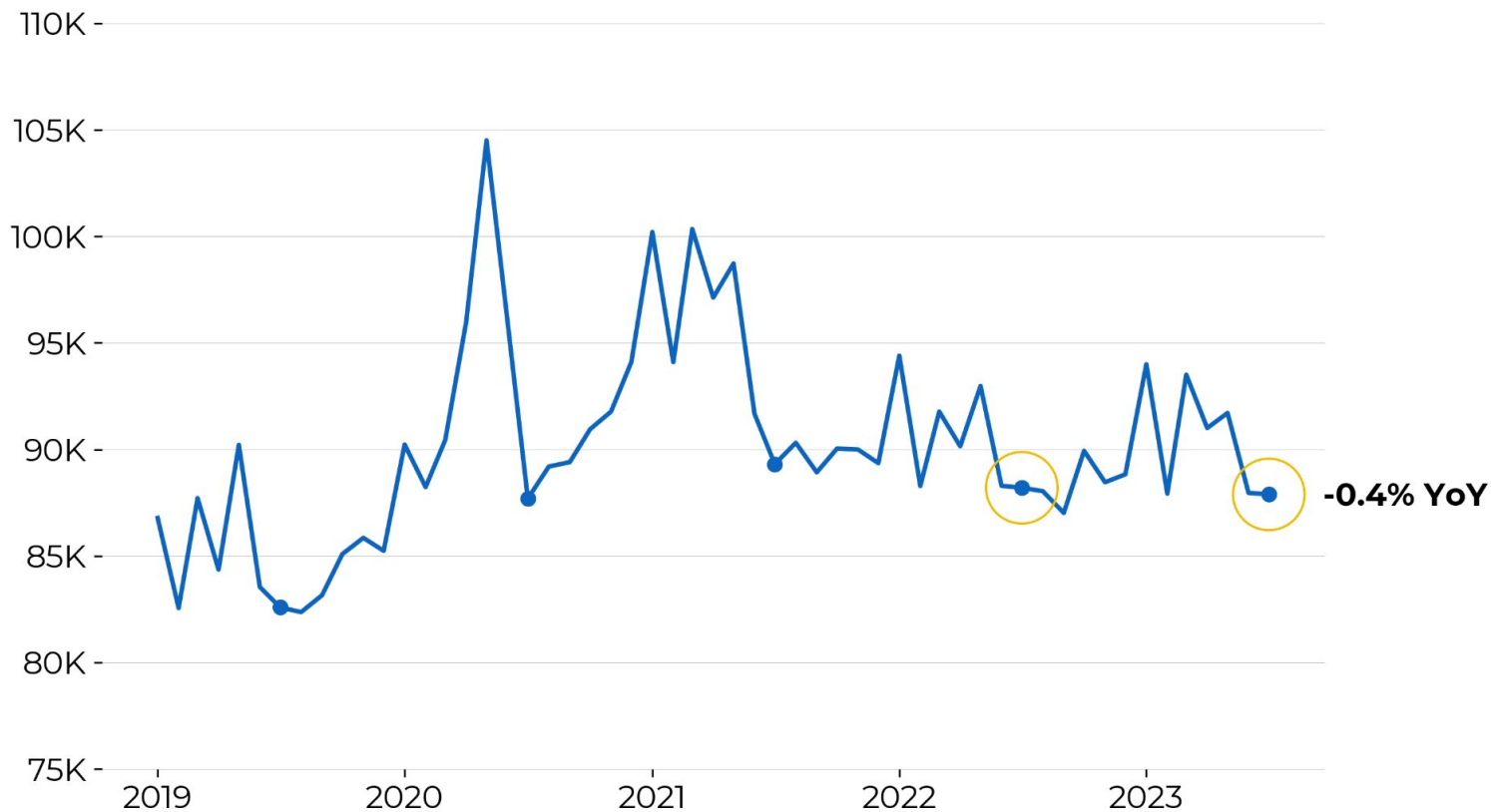
▨ Data unreliable [February 2021 - June 2022] (period not shown)



Graph Notes: Created by Maya Kampurath 2023-08-23 using data from [https://docs.google.com/spreadsheets/d/13XrrnCaz9qsKs5Gu\\_IUs2jtsK9VrSiGllCleDgR6KM](https://docs.google.com/spreadsheets/d/13XrrnCaz9qsKs5Gu_IUs2jtsK9VrSiGllCleDgR6KM)

Explore [Content Metrics](#), [Readers Metrics](#) and [Editors Metrics](#) in Superset. Monthly aggregates are also available in Sheets: [Editors & Content](#) and [Readers](#). For metric definitions, see the [Product data glossary](#). For questions: [#insights-and-data](#)

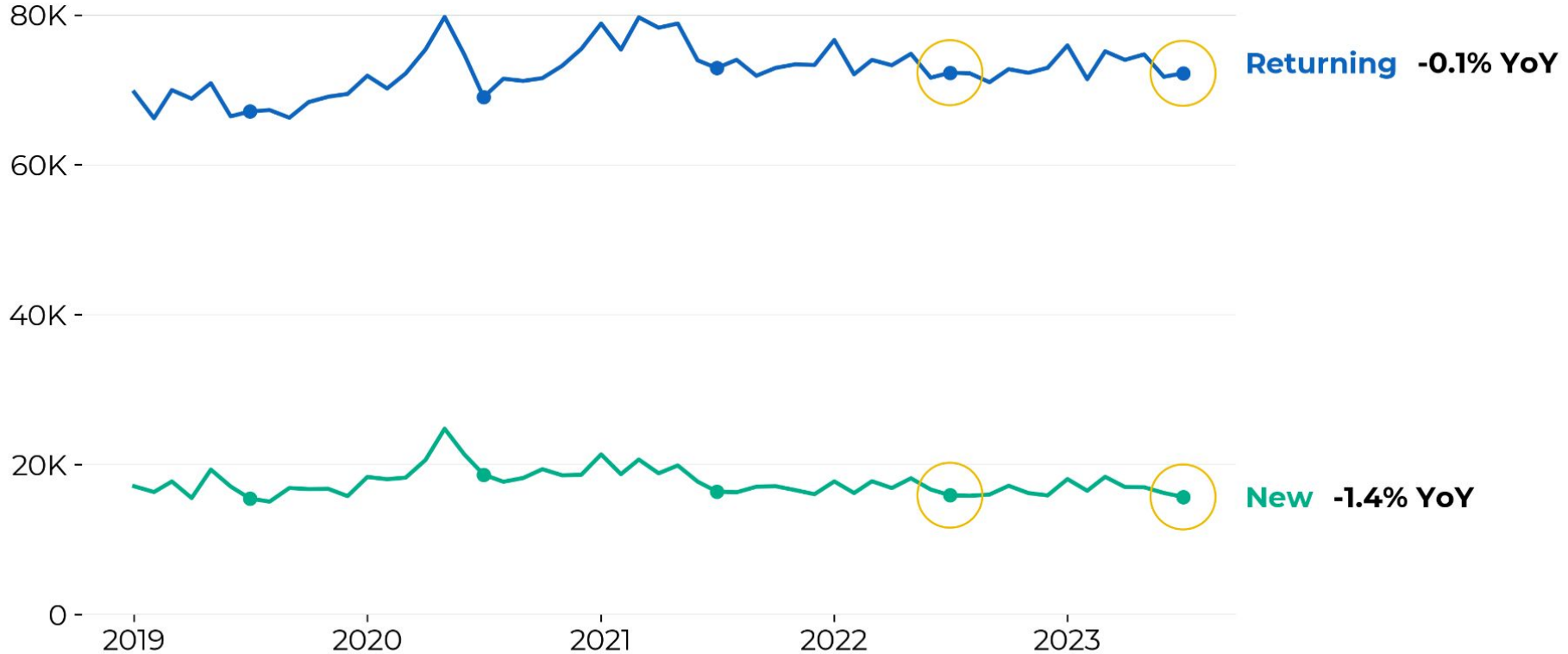
# Active editors continued to drop slightly, to below 88k



Graph Notes: Created by Hua Xi 2023-08-23 using data from <https://github.com/wikimedia-research/Editing-movement-metrics>

Explore [Content Metrics](#), [Readers Metrics](#) and [Editors Metrics](#) in Superset. Monthly aggregates are also available in Sheets: [Editors & Content](#) and [Readers](#). For metric definitions, see the [Product data glossary](#). For questions: [#insights-and-data](#)

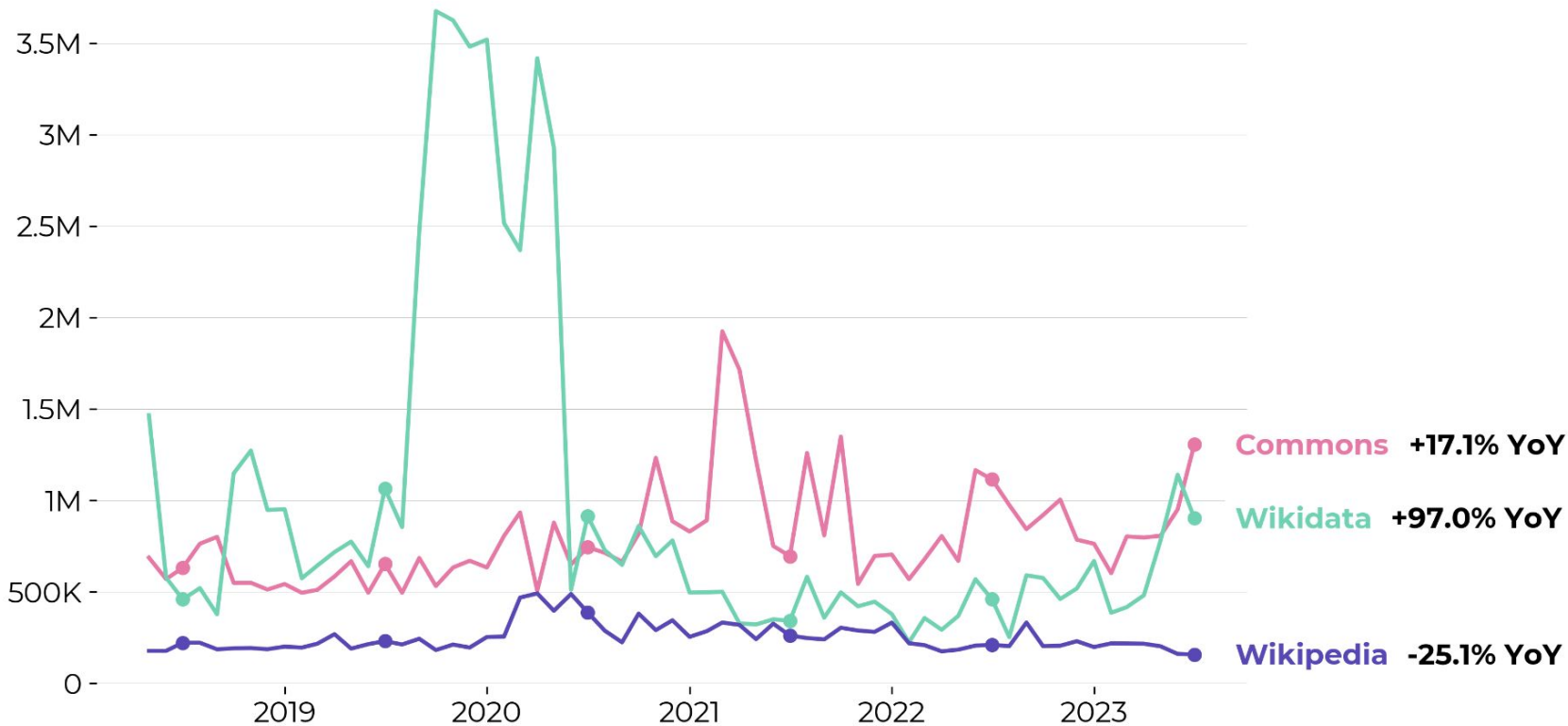
# Fewer new editors accounted for most of the drop



Graph Notes: Created by Hua Xi 2023-08-23 using data from <https://github.com/wikimedia-research/Editing-movement-metrics>

Explore [Content Metrics](#), [Readers Metrics](#) and [Editors Metrics](#) in Superset. Monthly aggregates are also available in Sheets: [Editors & Content](#) and [Readers](#). For metric definitions, see the [Product data glossary](#). For questions: [#insights-and-data](#)

# Net new content continued to drop on Wikipedia and grow on Wikidata and Commons



Graph Notes: Created by Hua Xi 2023-08-23 using data from <https://github.com/wikimedia-research/Editing-movement-metrics>

Explore [Content Metrics](#), [Readers Metrics](#) and [Editors Metrics](#) in Superset. Monthly aggregates are also available in Sheets: [Editors & Content](#) and [Readers](#). For metric definitions, see the [Product data glossary](#). For questions: [#insights-and-data](#)